



URBAN LIFE

BUSINESS BAY



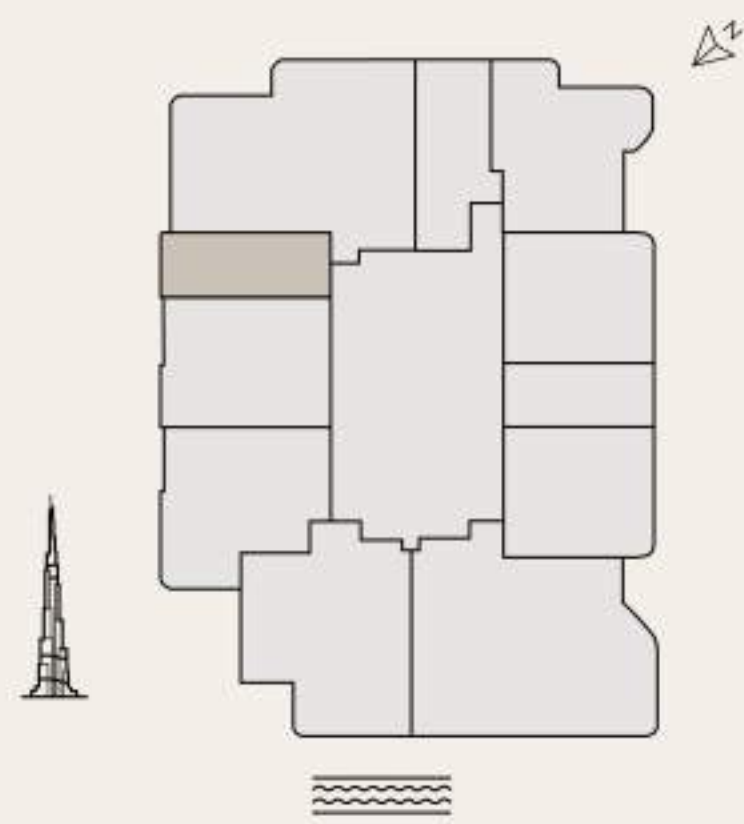
**URBAN PROPERTIES
DEVELOPMENT**

STUDIO TYPE A

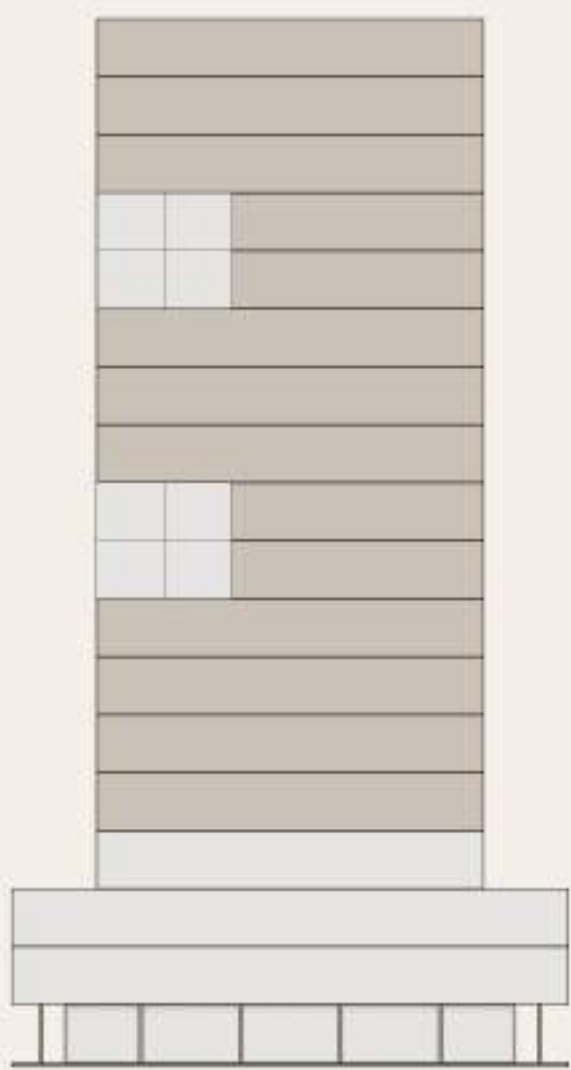
Total area: 436.37 SQ FT



Key Plan Level



Key Section



Floors: 2-15

Units: 202, 302, 402, 502, 602, 702, 802, 902, 1002, 1102, 1202, 1302, 1402, 1502



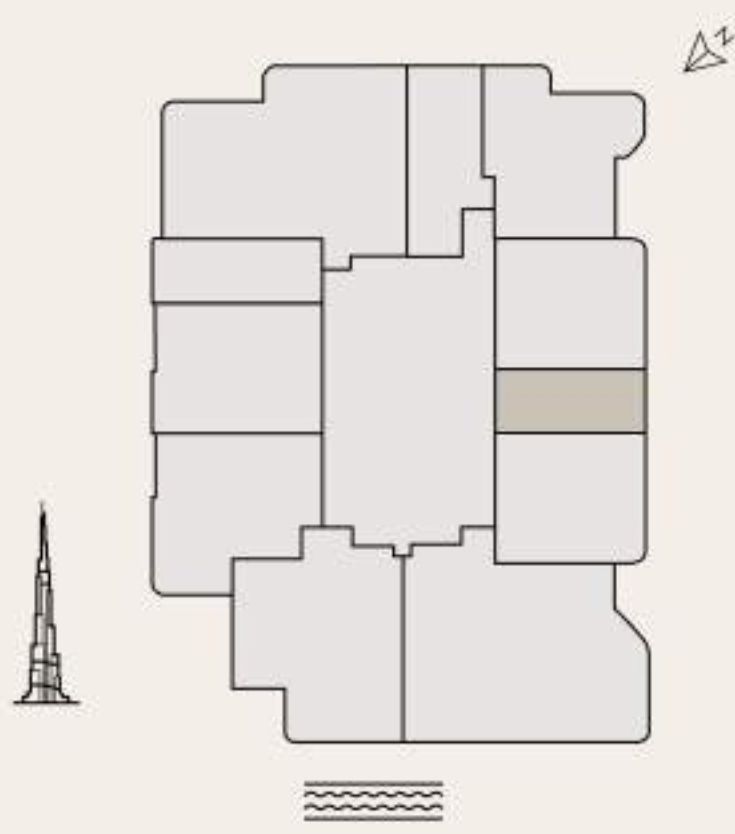
All drawings and sizes are approximate. Drawings are not to scale and can be changed without notice. The developer reserves the right to make changes. The blocks are taken from a typical building floor, and the dimensions of the columns may vary depending on the floor level. The furniture shown are for informational purposes only.

STUDIO TYPE B

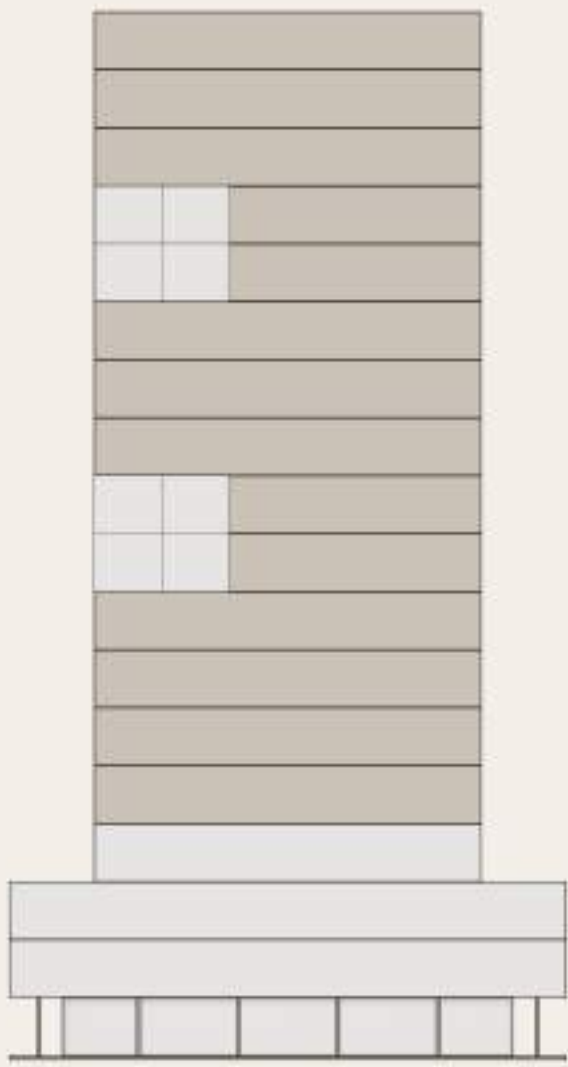
Total area: 417.64 SQ FT



Key Plan Level



Key Section



Floors: 2-15

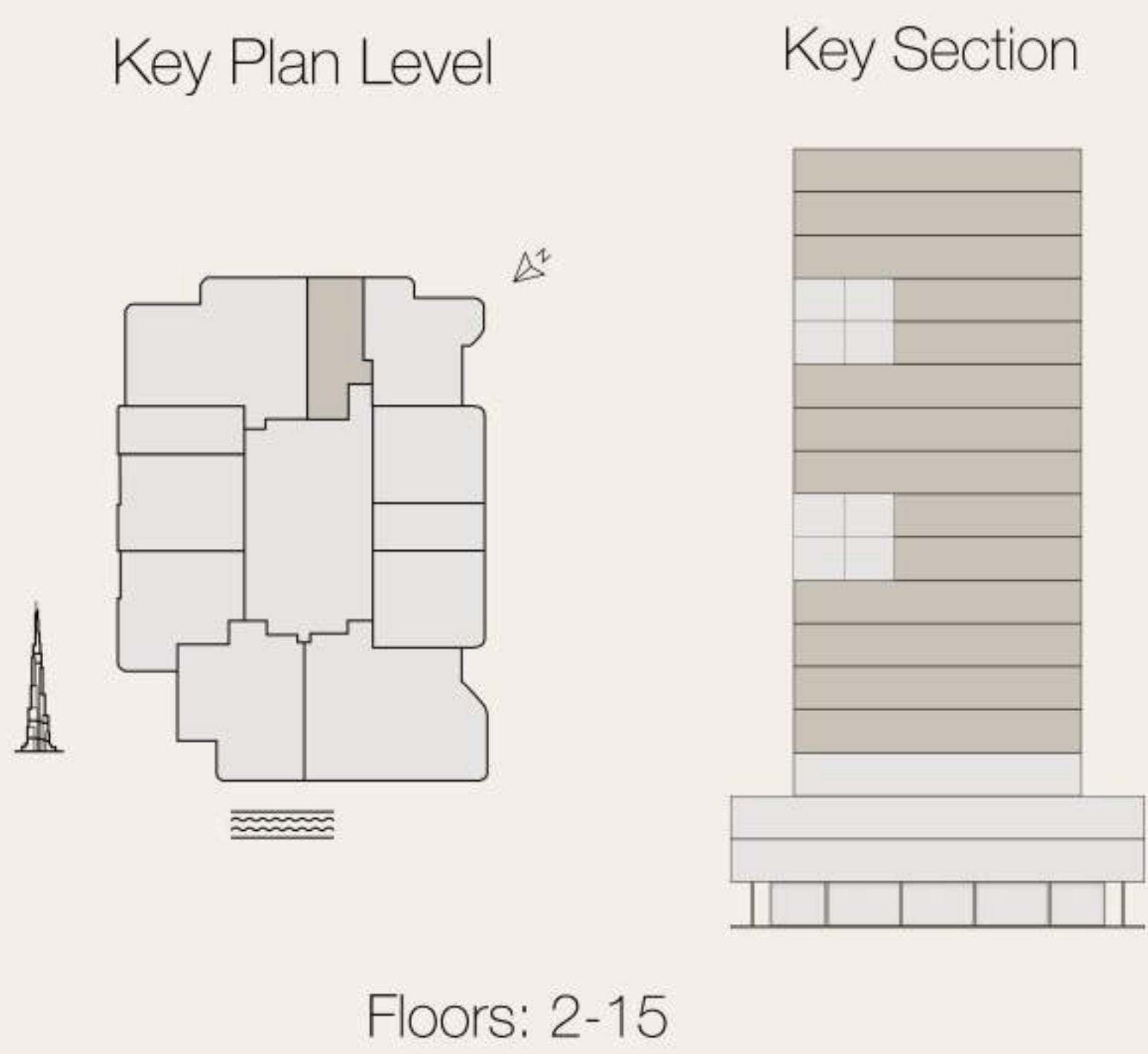
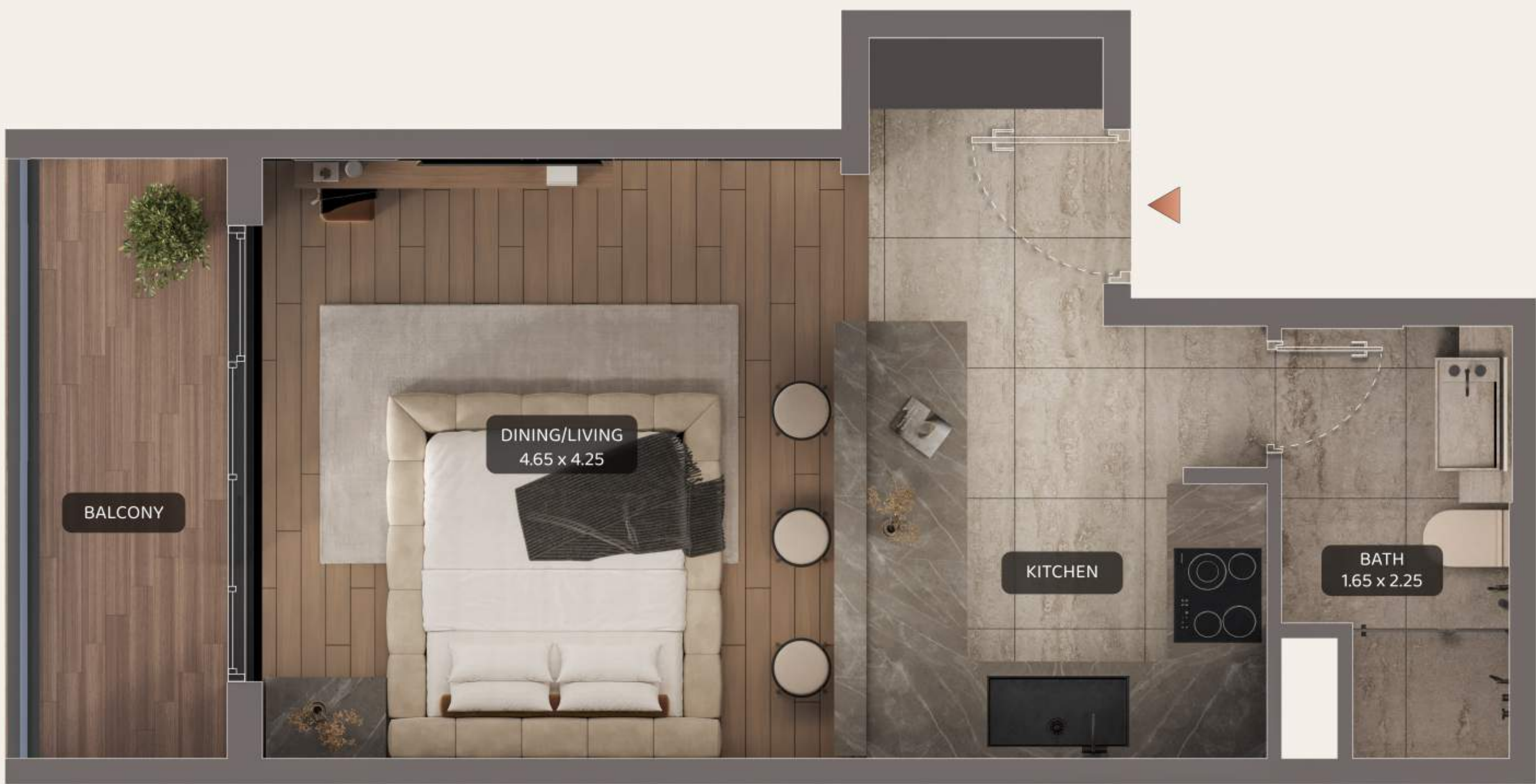
Units: 208, 308, 408, 508, 606, 706, 808, 908, 1008, 1106, 1206, 1308, 1408, 1508



All drawings and sizes are approximate. Drawings are not to scale and can be changed without notice. The developer reserves the right to make changes. The blocks are taken from a typical building floor, and the dimensions of the columns may vary depending on the floor level. The furniture shown are for informational purposes only.

STUDIO TYPE C

Total area: 507.63 SQ FT

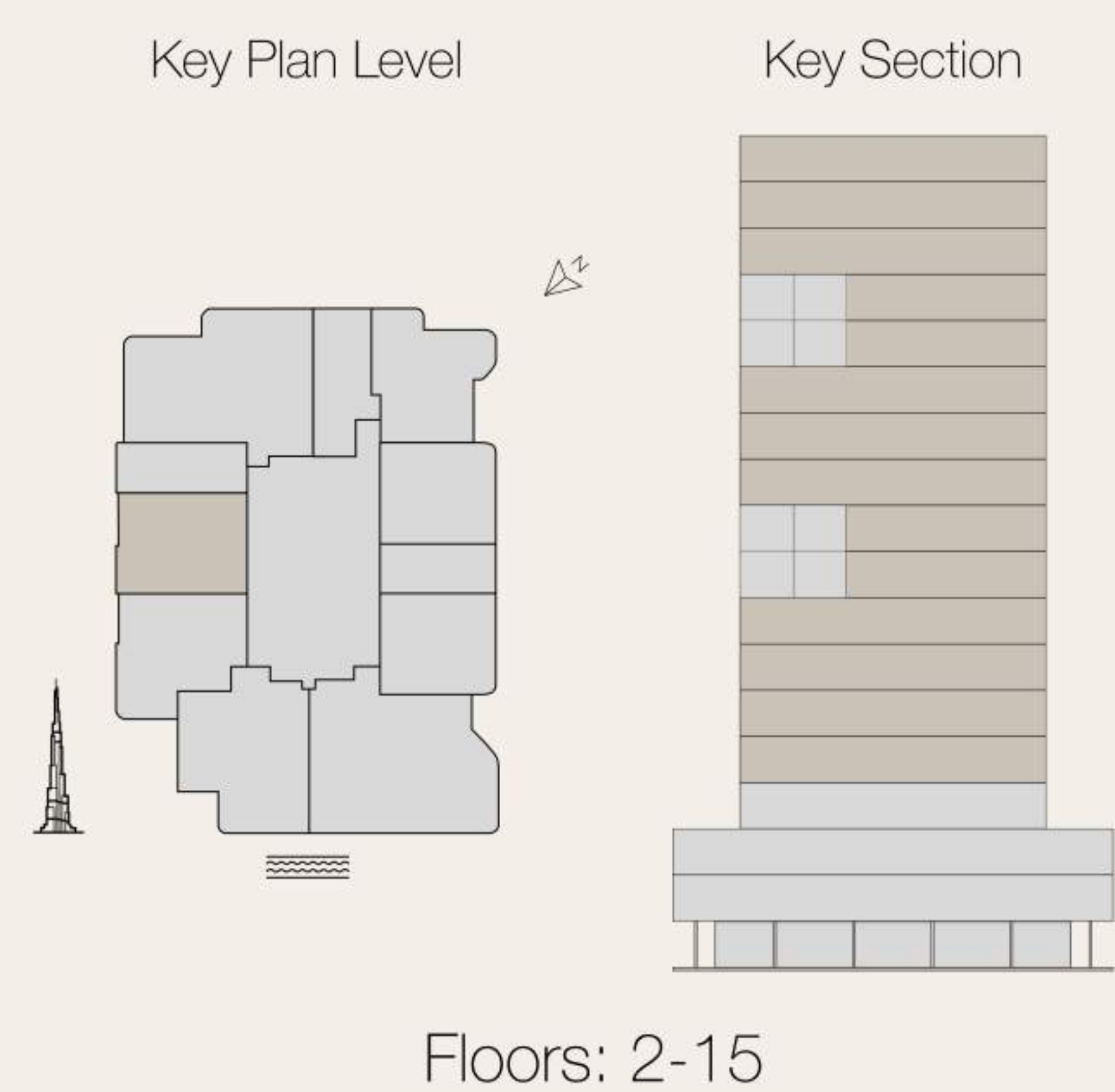


Units: 211, 311, 411, 511, 609, 709, 811, 911, 1011, 1109, 1209, 1311, 1411, 1511



All drawings and sizes are approximate. Drawings are not to scale and can be changed without notice. The developer reserves the right to make changes. The blocks are taken from a typical building floor, and the dimensions of the columns may vary depending on the floor level. The furniture shown are for informational purposes only.

1 - BEDROOM TYPE A - A



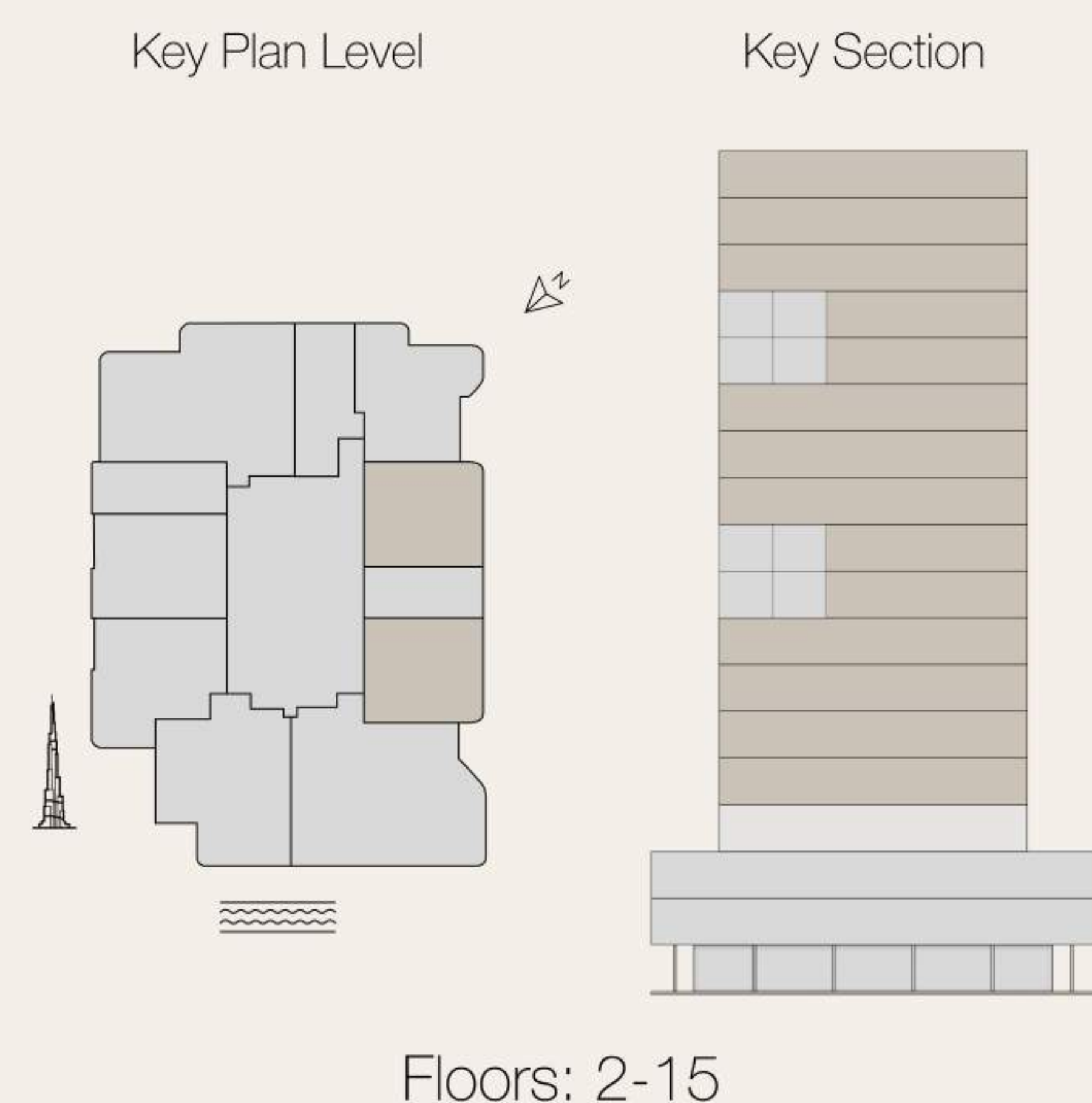
Total area: 875,01 SQ FT
Units: 203, 303, 403, 503, 803, 903, 1003, 1303, 1403, 1503

Total area: 993,41 SQ FT
Units: 603, 703, 1103, 1203



All drawings and sizes are approximate. Drawings are not to scale and can be changed without notice. The developer reserves the right to make changes. The blocks are taken from a typical building floor, and the dimensions of the columns may vary depending on the floor level. The furniture shown are for informational purposes only.

1 – BEDROOM TYPE A – B



Total area: 880,17 SQ FT
Units: 607,707,1107,1207

Total area: 877,48 SQ FT
Units: 605,705,1105,1205

Total area: 794,06 SQ FT
Units: 209,309,409,509,809,909,1009,
1309,1409,1509

Total area: 791,37 SQ FT
Units: 207,307,407,507,807,907,
1007,1307,1407,1507



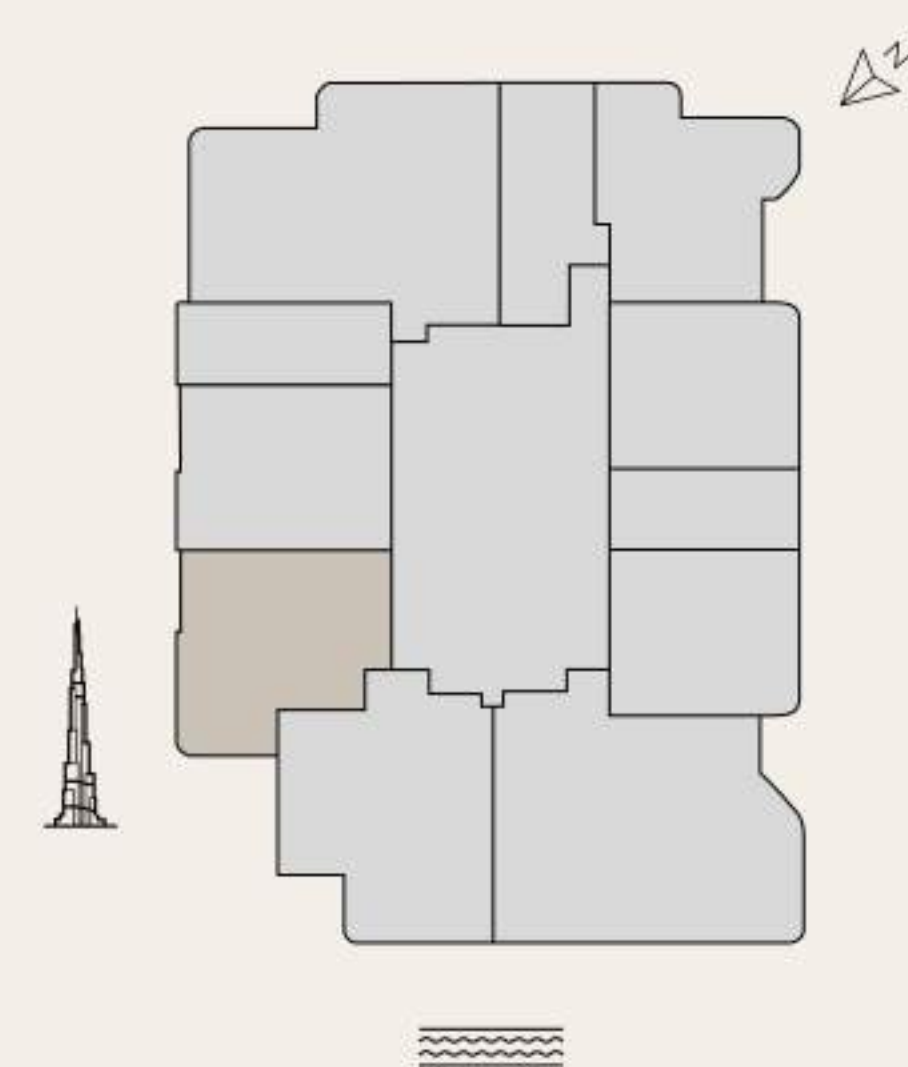
All drawings and sizes are approximate. Drawings are not to scale and can be changed without notice. The developer reserves the right to make changes. The blocks are taken from a typical building floor, and the dimensions of the columns may vary depending on the floor level. The furniture shown are for informational purposes only.

1 - BEDROOM TYPE B

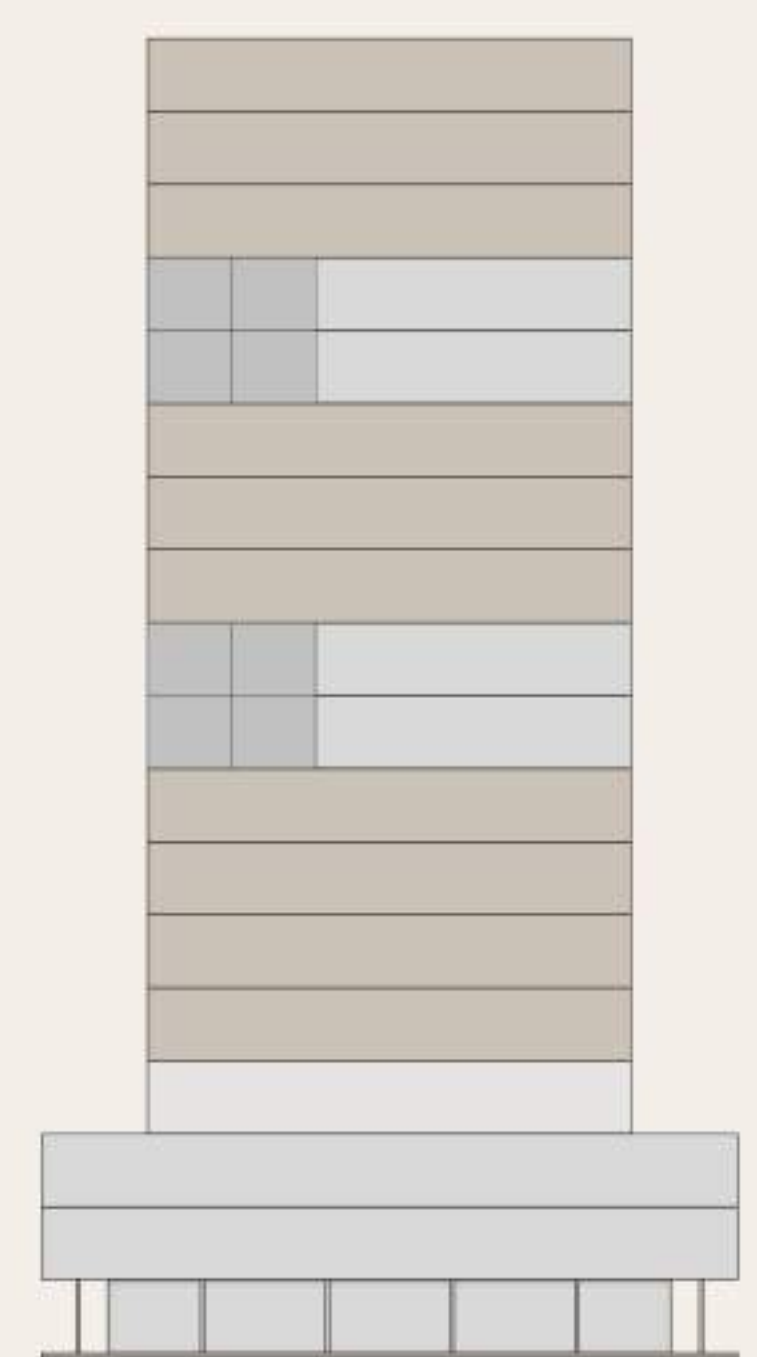
Total area: 919.25 SQ FT



Key Plan Level



Key Section



Floors: 2-5, 8-10, 13-15

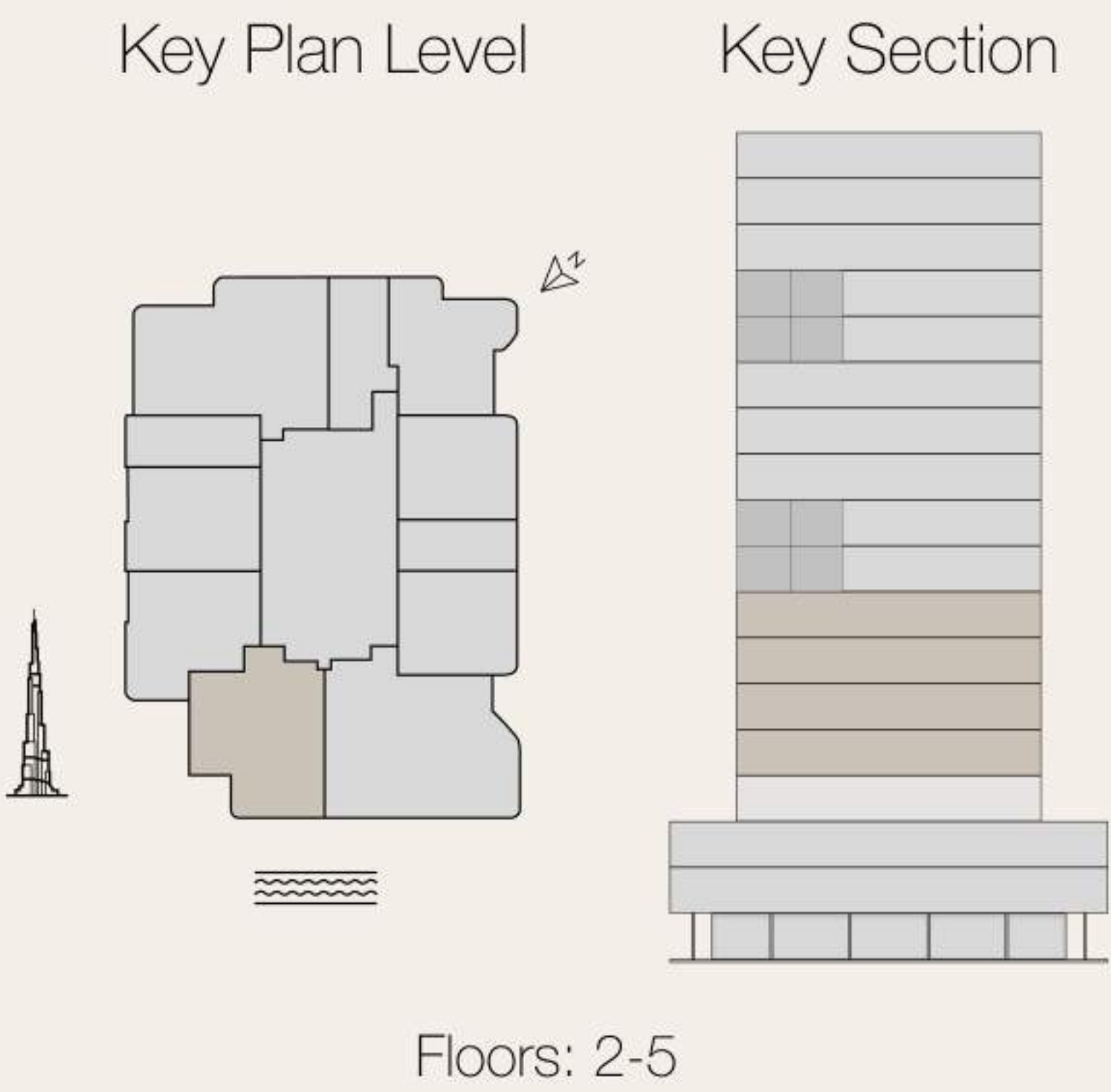
Units: 204, 304, 404, 504, 804, 904, 1004, 1304, 1404, 1504

AX
CAPITAL

All drawings and sizes are approximate. Drawings are not to scale and can be changed without notice. The developer reserves the right to make changes. The blocks are taken from a typical building floor, and the dimensions of the columns may vary depending on the floor level. The furniture shown are for informational purposes only.

1 – BEDROOM TYPE C – A

Total area: 1205.57SQ FT



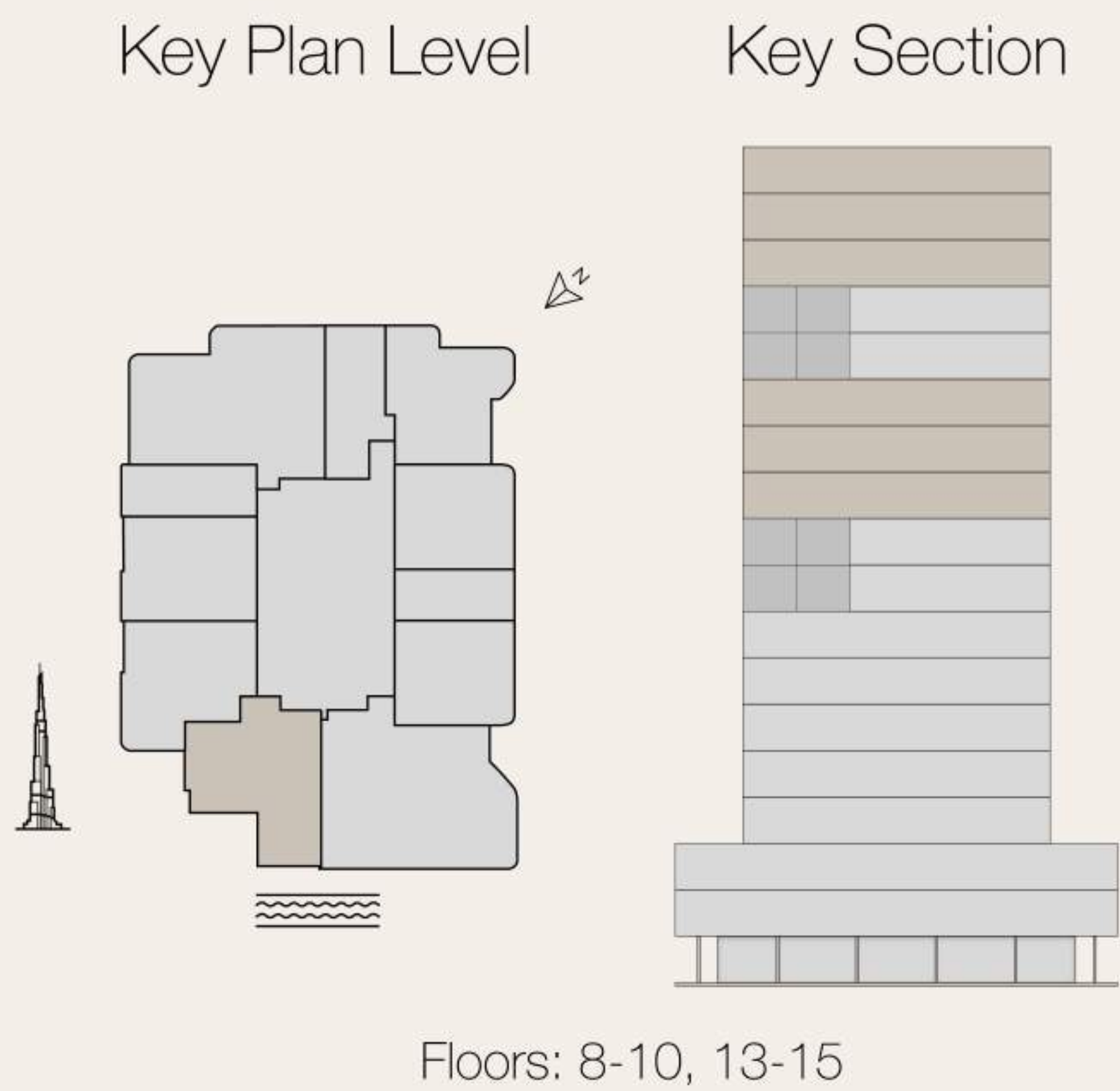
Units: 205, 305, 405, 505



All drawings and sizes are approximate. Drawings are not to scale and can be changed without notice. The developer reserves the right to make changes. The blocks are taken from a typical building floor, and the dimensions of the columns may vary depending on the floor level. The furniture shown are for informational purposes only.

1 – BEDROOM TYPE C – B

Total area: 1205.57 SQ FT



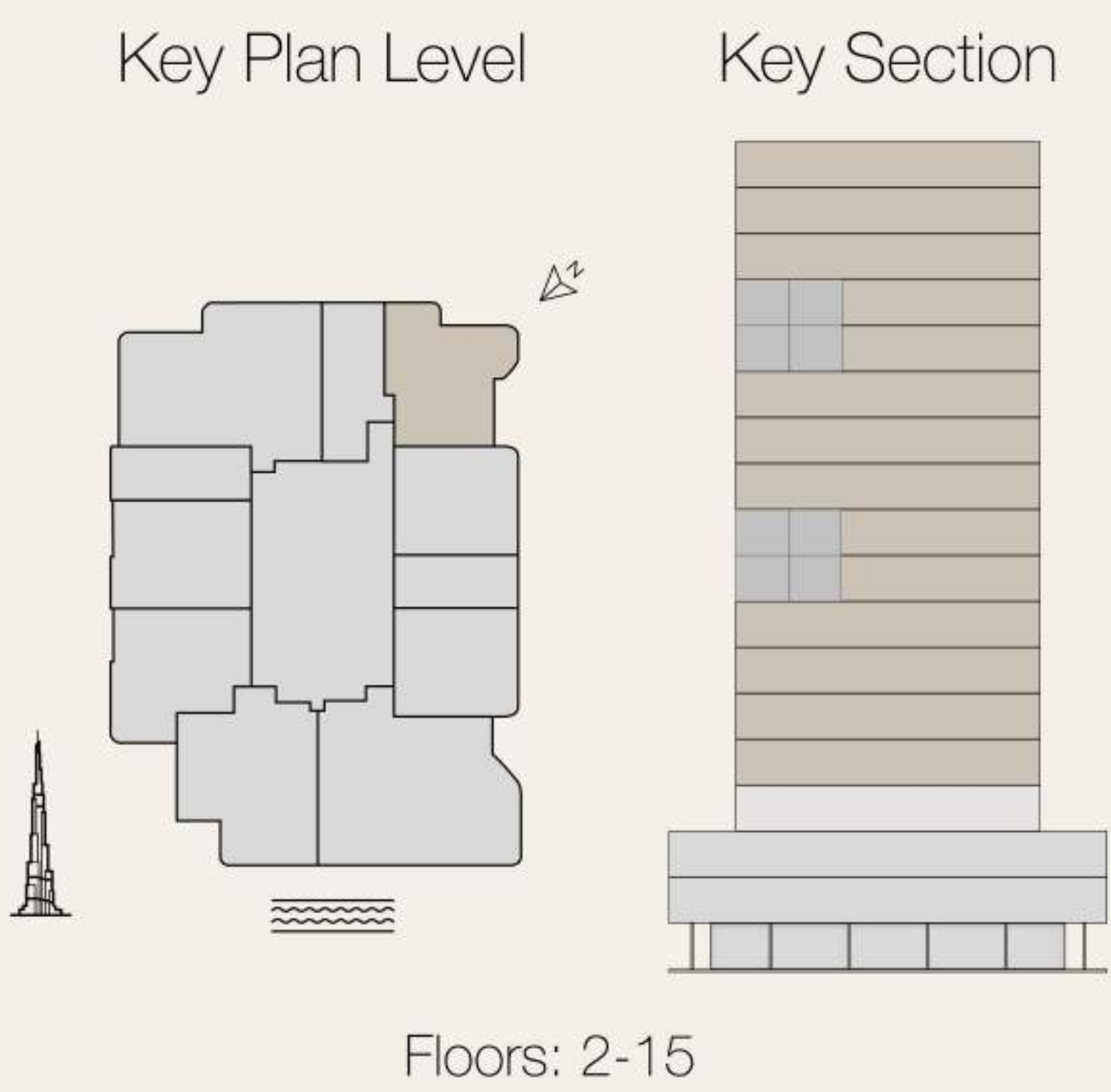
Units: 805, 905, 1005, 1305, 1405, 1505



All drawings and sizes are approximate. Drawings are not to scale and can be changed without notice. The developer reserves the right to make changes. The blocks are taken from a typical building floor, and the dimensions of the columns may vary depending on the floor level. The furniture shown are for informational purposes only.

1 – BEDROOM TYPE D

Total area: 936.68 SQ FT



Units: 210, 310, 410, 510, 608, 708, 810, 910, 1010, 1108, 1208, 1310, 1410, 1510



All drawings and sizes are approximate. Drawings are not to scale and can be changed without notice. The developer reserves the right to make changes. The blocks are taken from a typical building floor, and the dimensions of the columns may vary depending on the floor level. The furniture shown are for informational purposes only.

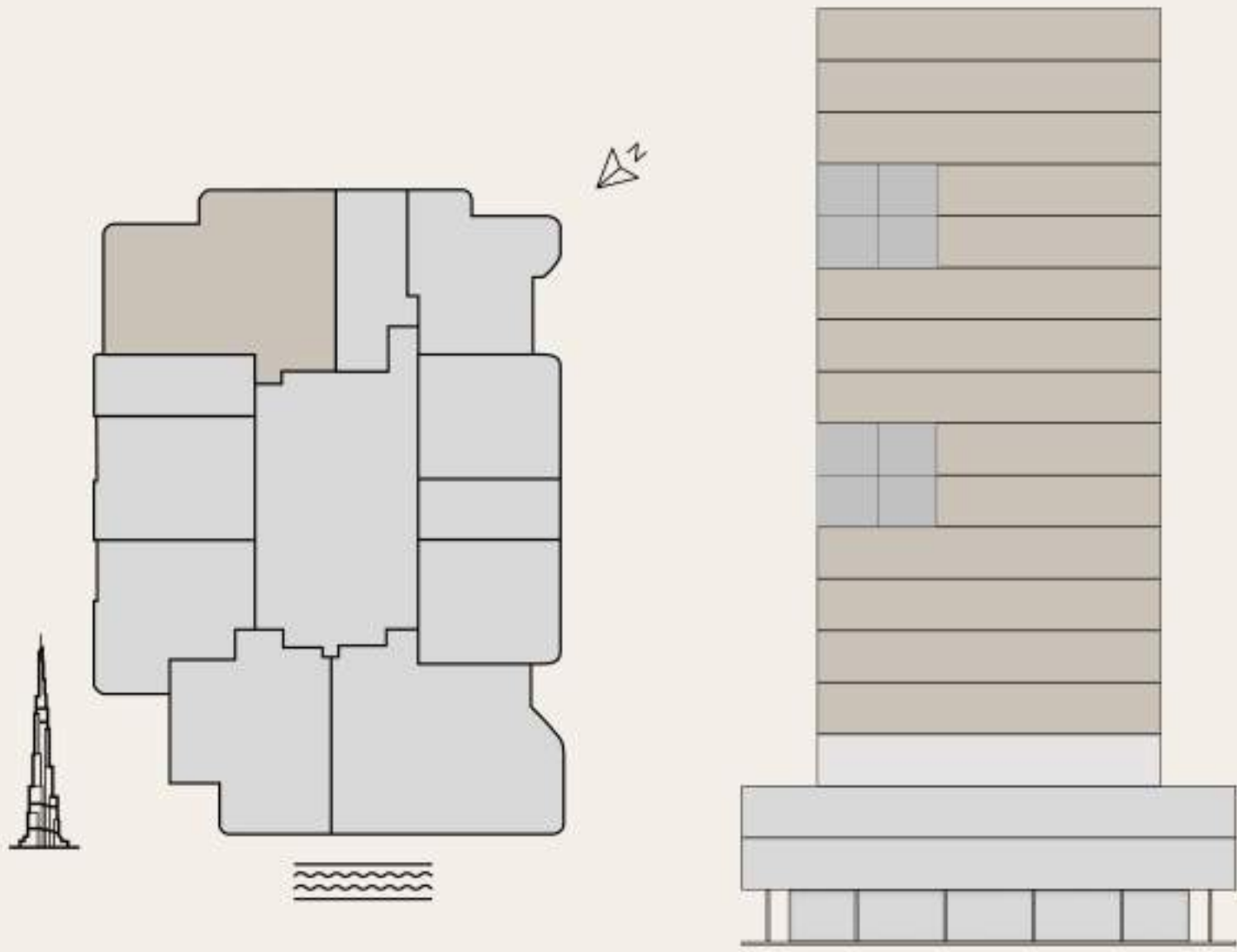
2-BEDROOM TYPE A

Total area: 1572.62 SQ FT



Key Plan Level

Key Section



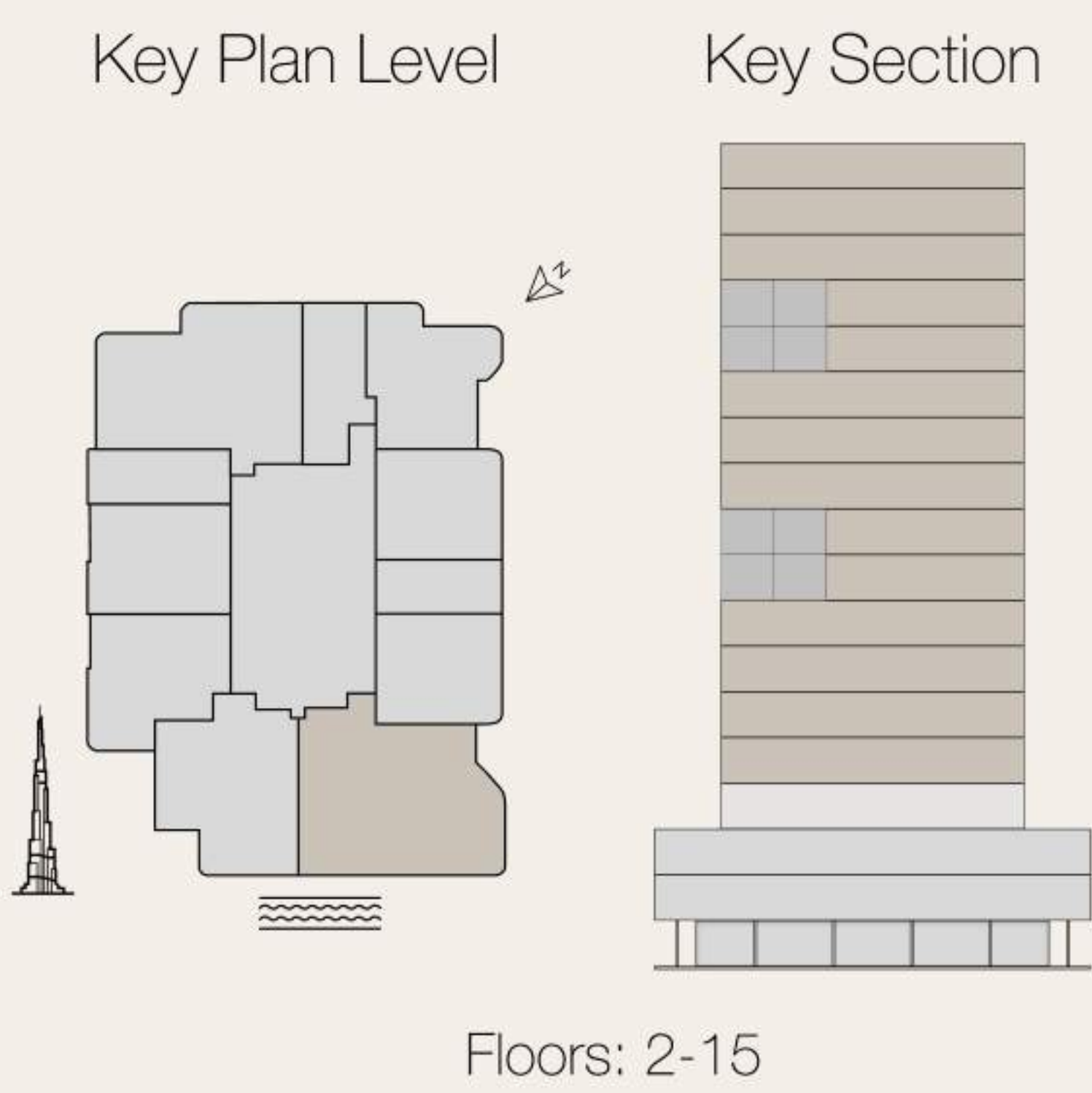
Units: 201, 301, 401, 501, 601, 701, 801, 901, 1001, 1101, 1201, 1301, 1401, 1501



All drawings and sizes are approximate. Drawings are not to scale and can be changed without notice. The developer reserves the right to make changes. The blocks are taken from a typical building floor, and the dimensions of the columns may vary depending on the floor level. The furniture shown are for informational purposes only.

2-BEDROOM TYPE B

Total area: 1761.31 SQ FT



Units: 206, 306, 406, 506, 604, 704, 806, 906, 1006, 1104, 1204, 1306, 1406, 1506



All drawings and sizes are approximate. Drawings are not to scale and can be changed without notice. The developer reserves the right to make changes. The blocks are taken from a typical building floor, and the dimensions of the columns may vary depending on the floor level. The furniture shown are for informational purposes only.