



D A L A N D S

L A R E S *i* D E N Z A

Floor Plans
1 & 2 Bedrooms

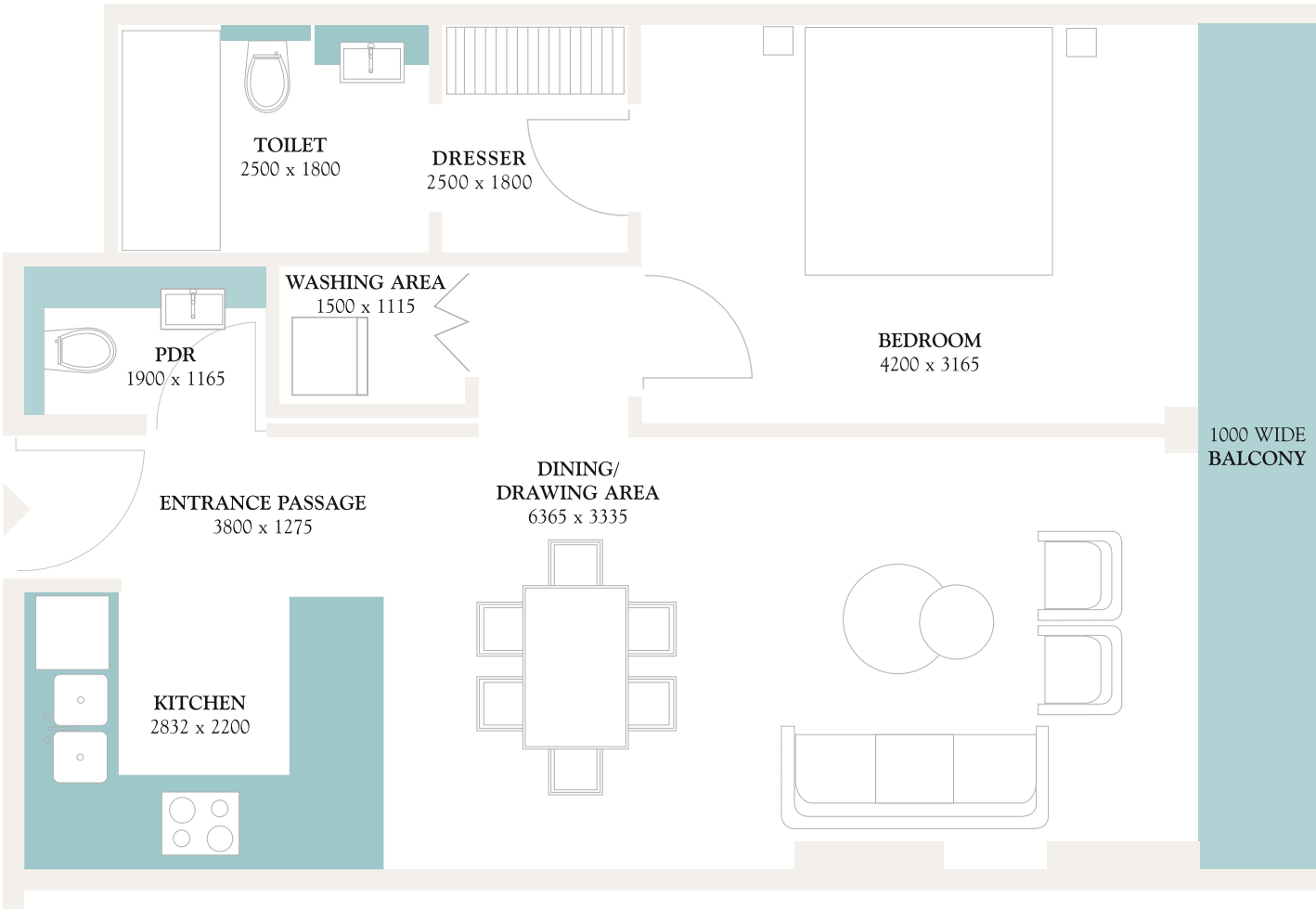
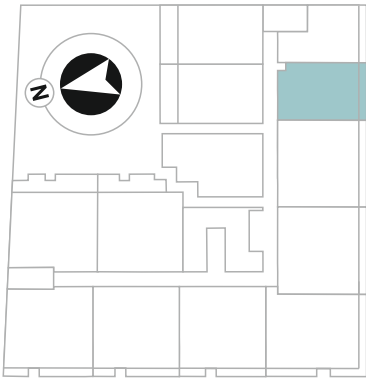
TYPICAL PLAN

1 BEDROOM | TYPE - A

FLOOR LEVEL



KEY PLAN



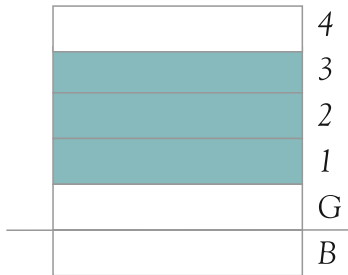
Apartment	109, 209, 309
Internal Living Area	685.02 sq. ft
Outdoor Living Area	73.19 sq. ft
Total Living Area	758.21 sq. ft.

All pictures, plans, layouts, information, data and details included in this brochure are indicative only and may change at any time up to the final 'as built' status in accordance with final designs of the project, regulatory approvals and planning permissions. All accessories and interior finishes such as wallpaper, chandeliers, furniture, electronics, white goods, curtains, hard and soft landscaping, pavements, features, gym, swimming pool(s) and other elements displayed in the brochure, or within the show apartment or between the plot boundary and the unit, are not part of the unit and are shown for illustrative purposes only.

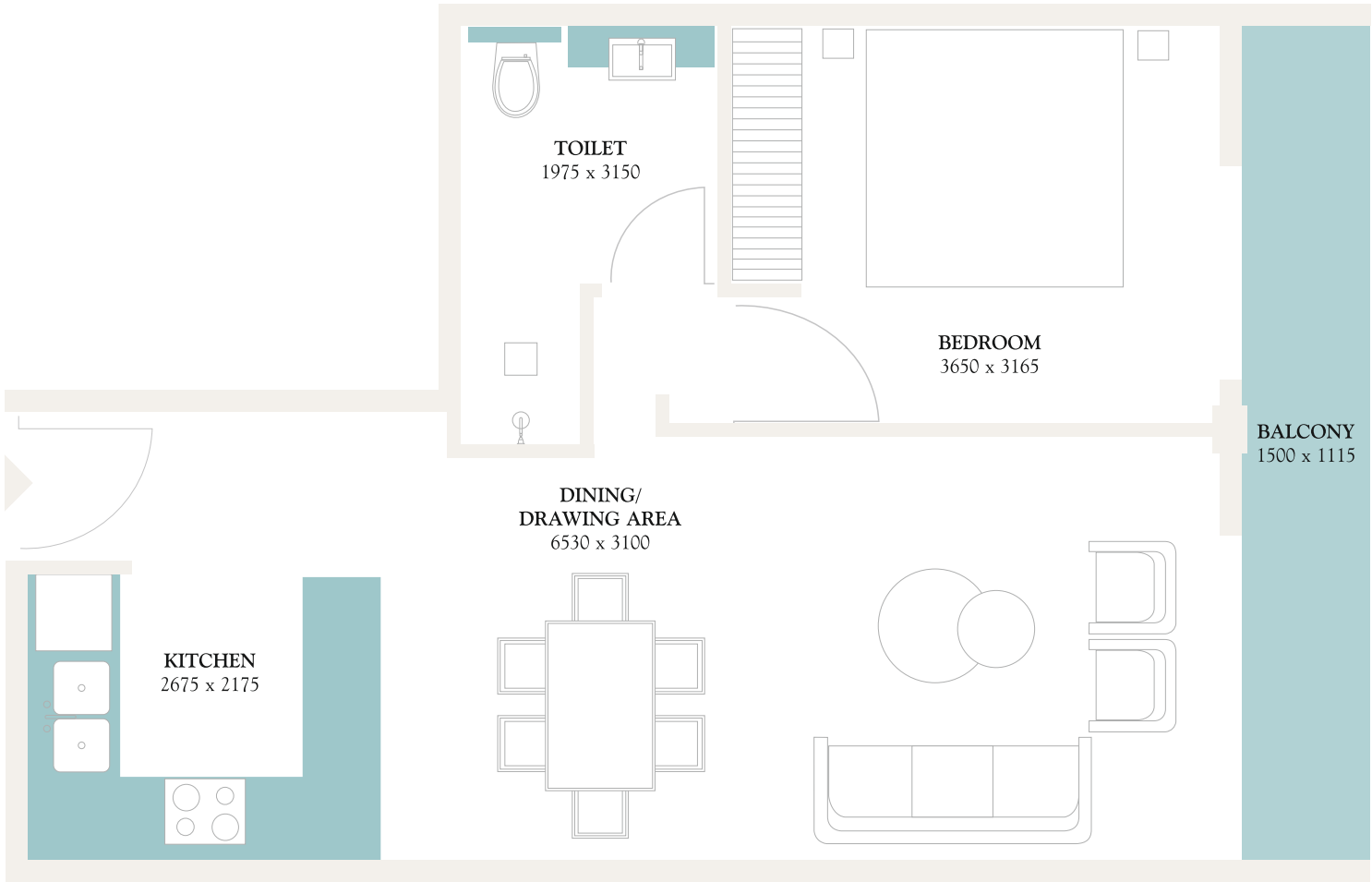
TYPICAL PLAN

1 BEDROOM | TYPE - B

FLOOR LEVEL



KEY PLAN



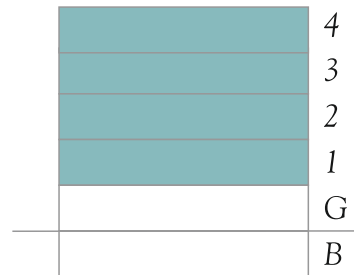
<i>Apartment</i>	110, 210, 310
<i>Internal Living Area</i>	574.98 sq. ft.
<i>Outdoor Living Area</i>	60.28 sq. ft.
<i>Total Living Area</i>	635.26 sq. ft.

All pictures, plans, layouts, information, data and details included in this brochure are indicative only and may change at any time up to the final ‘as built’ status in accordance with final designs of the project, regulatory approvals and planning permissions. All accessories and interior finishes such as wallpaper, chandeliers, furniture, electronics, white goods, curtains, hard and soft landscaping, pavements, features, gym, swimming pool(s) and other elements displayed in the brochure, or within the show apartment or between the plot boundary and the unit, are not part of the unit and are shown for illustrative purposes only.

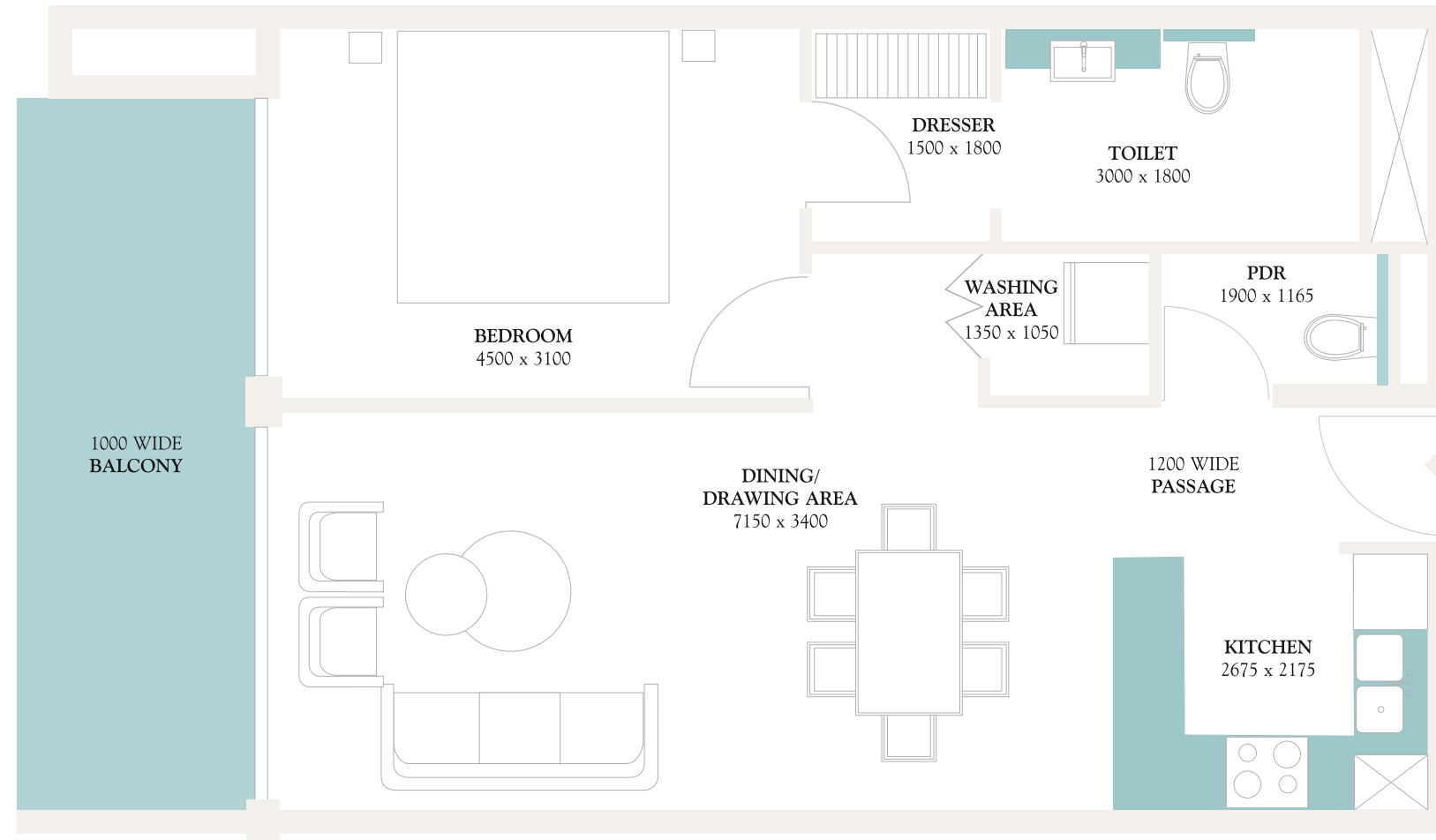
TYPICAL PLAN

1 BEDROOM | TYPE - C

FLOOR LEVEL



KEY PLAN



Apartment	111, 211, 311, 408
Internal Living Area	726.99 To 734.11 sq. ft.
Outdoor Living Area	131.32 To 111.62 sq. ft.
Total Living Area	814.91 To 865.43 sq. ft.

All pictures, plans, layouts, information, data and details included in this brochure are indicative only and may change at any time up to the final 'as built' status in accordance with final designs of the project, regulatory approvals and planning permissions. All accessories and interior finishes such as wallpaper, chandeliers, furniture, electronics, white goods, curtains, hard and soft landscaping, pavements, features, gym, swimming pool(s) and other elements displayed in the brochure, or within the show apartment or between the plot boundary and the unit, are not part of the unit and are shown for illustrative purposes only.

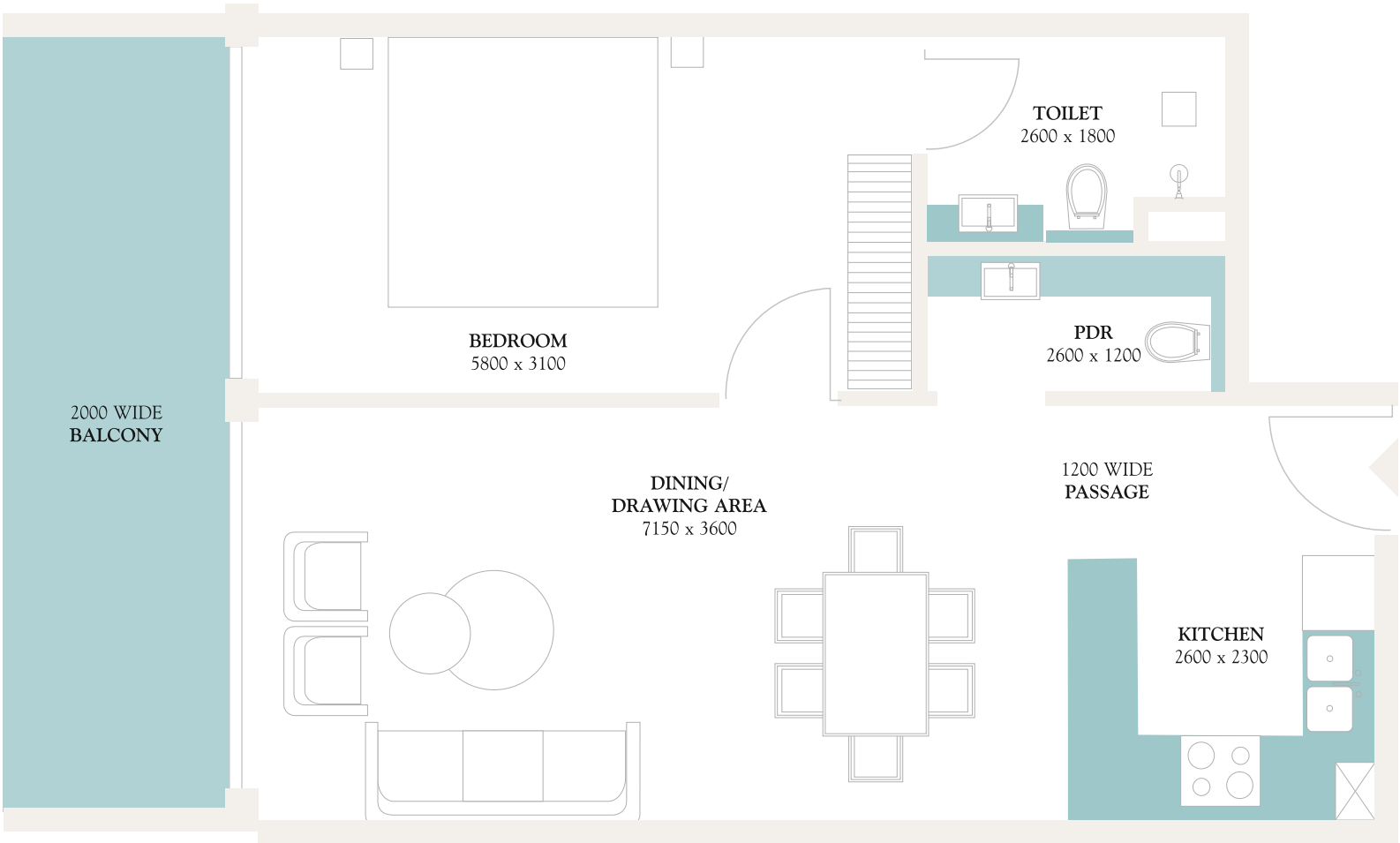
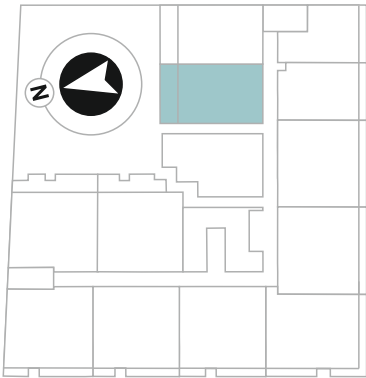
TYPICAL PLAN

1 BEDROOM | TYPE - D

FLOOR LEVEL



KEY PLAN



Apartment	112, 212, 312, 409
Internal Living Area	705.66 sq. ft.
Outdoor Living Area	148.54 To 106.13 sq. ft.
Total Living Area	811.79 To 854.20 sq. ft.

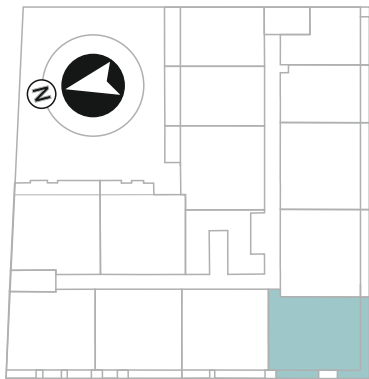
All pictures, plans, layouts, information, data and details included in this brochure are indicative only and may change at any time up to the final ‘as built’ status in accordance with final designs of the project, regulatory approvals and planning permissions. All accessories and interior finishes such as wallpaper, chandeliers, furniture, electronics, white goods, curtains, hard and soft landscaping, pavements, features, gym, swimming pool(s) and other elements displayed in the brochure, or within the show apartment or between the plot boundary and the unit, are not part of the unit and are shown for illustrative purposes only.

TYPICAL PLAN

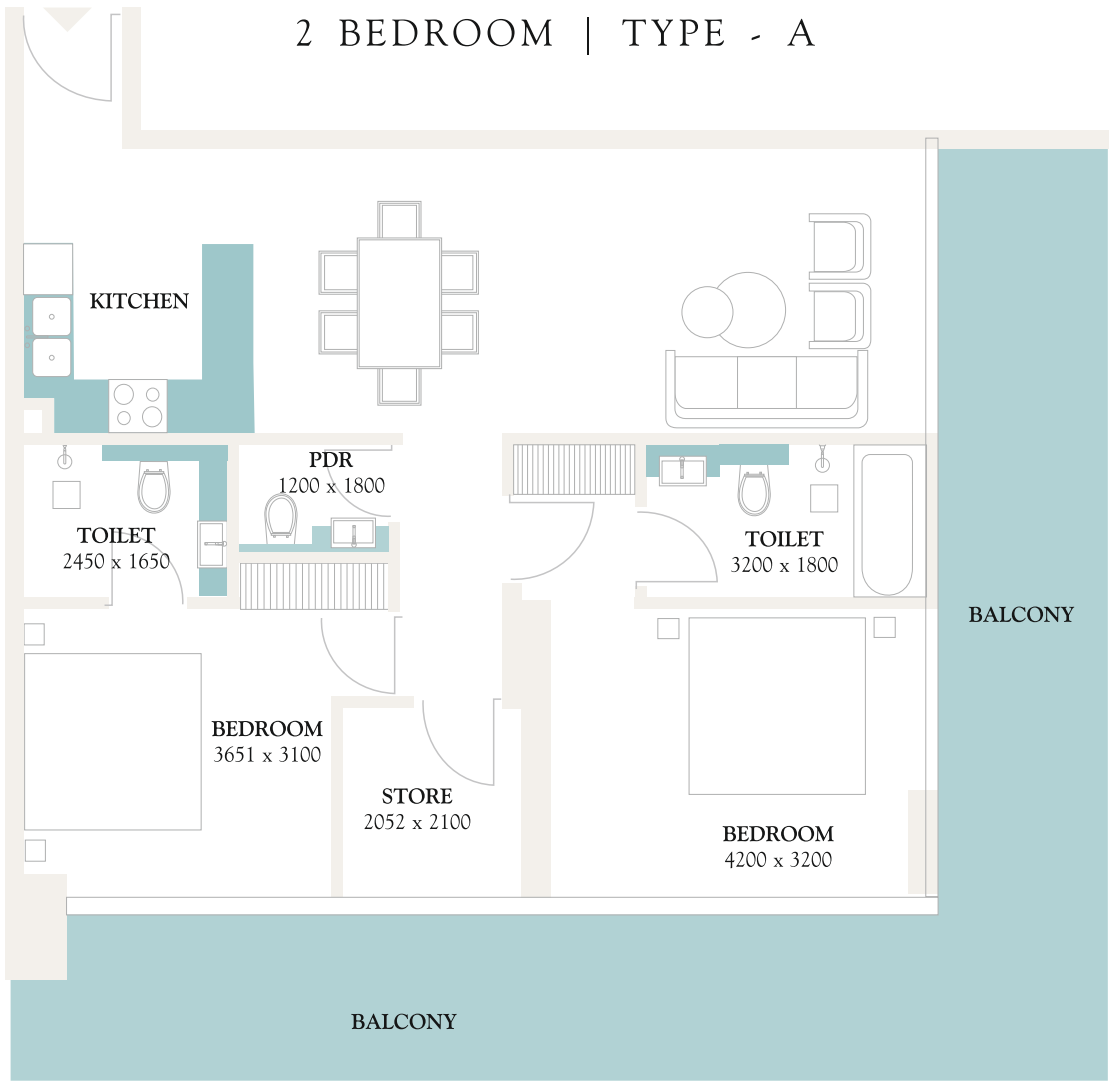
FLOOR LEVEL



KEY PLAN



2 BEDROOM | TYPE - A



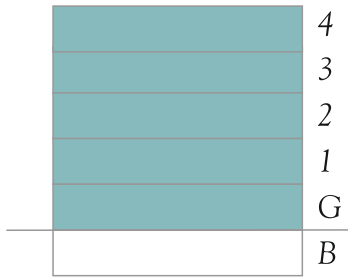
Apartment	01, 106, 206, 306
Internal Living Area	1041.93 To 1054.86 sq. ft.
Outdoor Living Area	192.67 To 468.77 sq. ft.
Total Living Area	1234.60 To 1523.65 sq. ft.

All pictures, plans, layouts, information, data and details included in this brochure are indicative only and may change at any time up to the final ‘as built’ status in accordance with final designs of the project, regulatory approvals and planning permissions. All accessories and interior finishes such as wallpaper, chandeliers, furniture, electronics, white goods, curtains, hard and soft landscaping, pavements, features, gym, swimming pool(s) and other elements displayed in the brochure, or within the show apartment or between the plot boundary and the unit, are not part of the unit and are shown for illustrative purposes only.

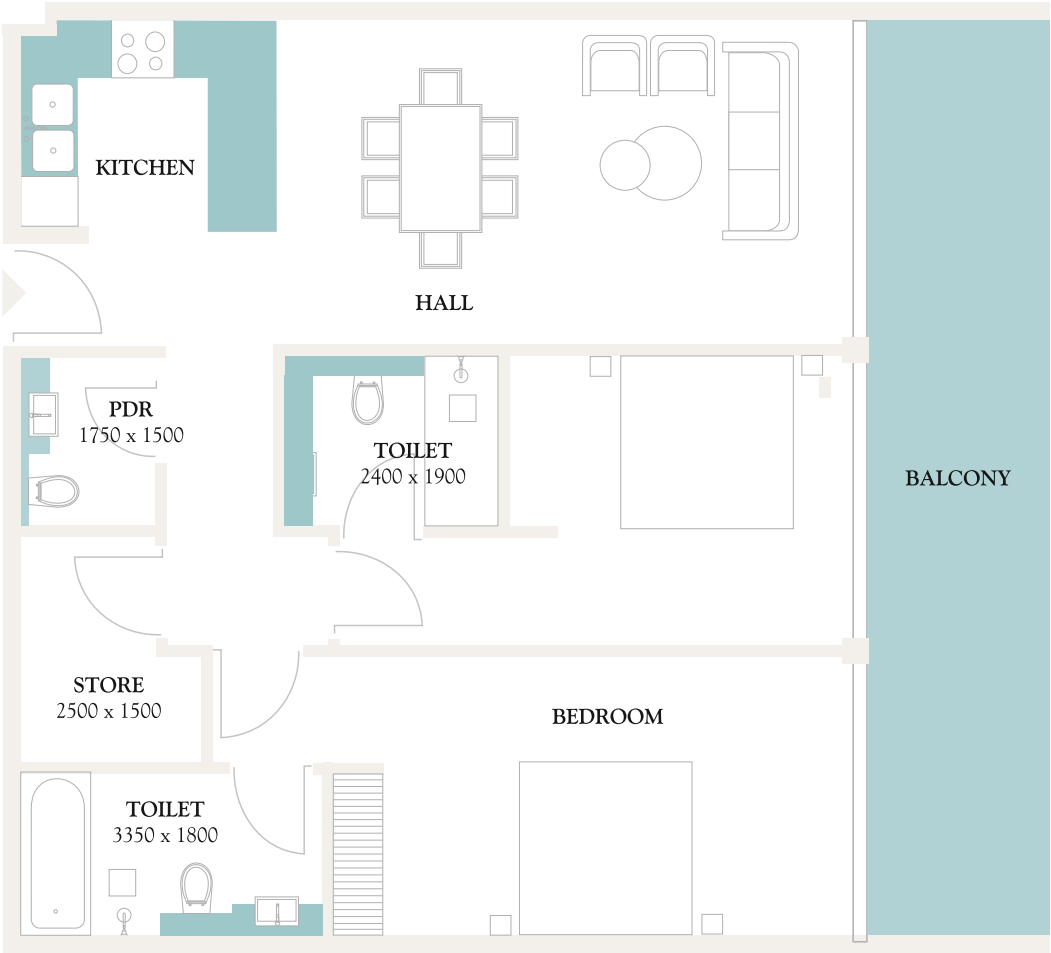
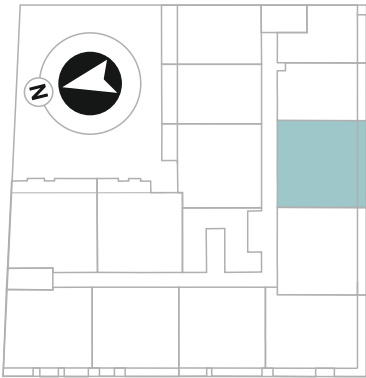
TYPICAL PLAN

2 BEDROOM | TYPE - B

FLOOR LEVEL



KEY PLAN



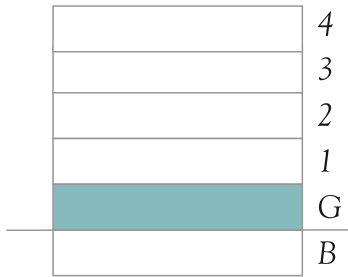
Apartment	02, 03, 101, 104, 105, 107, 108, 201 204, 205, 207, 208, 213, 301, 304, 305, 307, 308, 313, 401, 410
Internal Living Area	986.05 To 1072.44 sq. ft.
Outdoor Living Area	72.33 To 222.83 sq. ft.
Total Living Area	1104.8 To 1263.03 sq. ft.

All pictures, plans, layouts, information, data and details included in this brochure are indicative only and may change at any time up to the final ‘as built’ status in accordance with final designs of the project, regulatory approvals and planning permissions. All accessories and interior finishes such as wallpaper, chandeliers, furniture, electronics, white goods, curtains, hard and soft landscaping, pavements, features, gym, swimming pool(s) and other elements displayed in the brochure, or within the show apartment or between the plot boundary and the unit, are not part of the unit and are shown for illustrative purposes only.

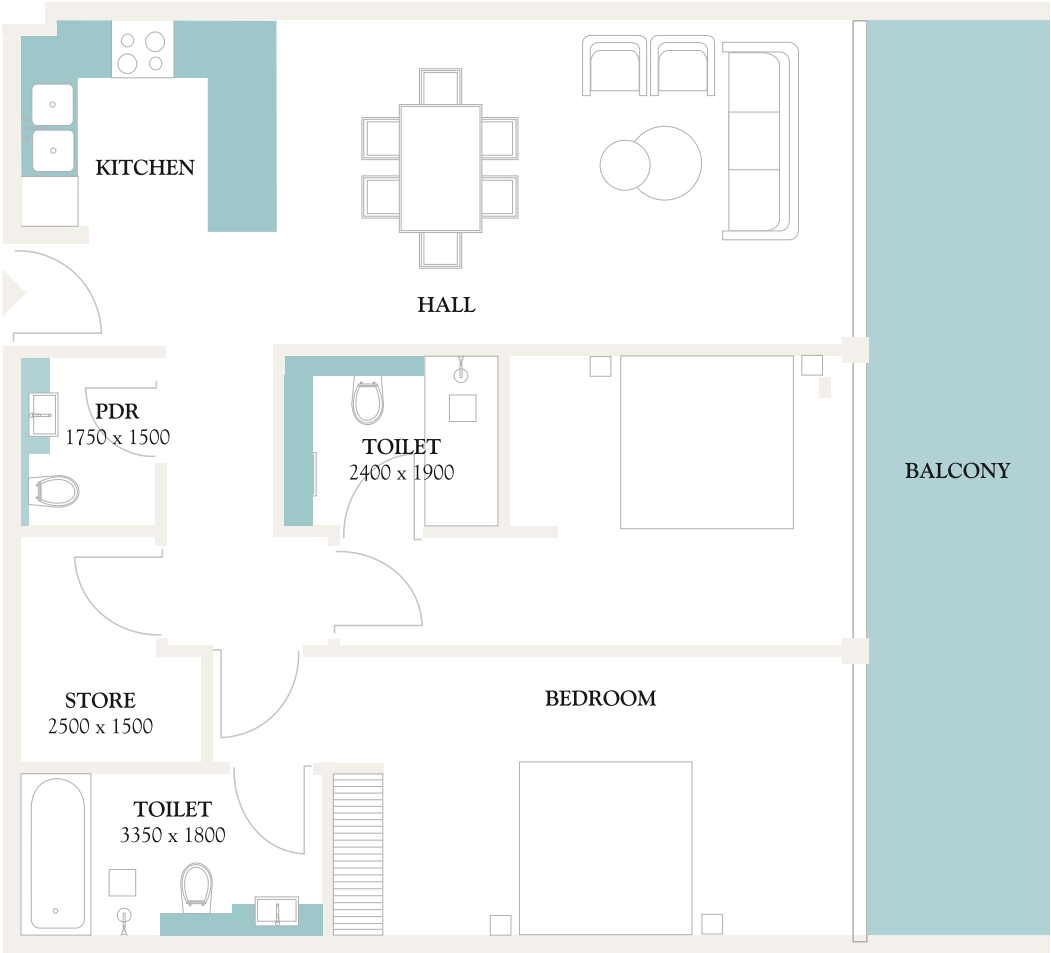
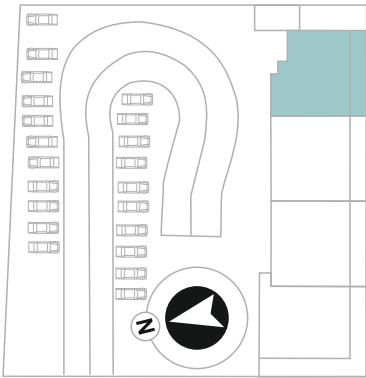
TYPICAL PLAN

2 BEDROOM | TYPE - C

FLOOR LEVEL



KEY PLAN

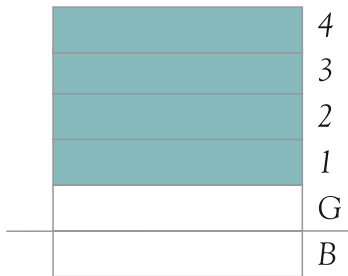


Apartment	04
Internal Living Area	986.89 sq. ft.
Outdoor Living Area	226.63 sq. ft.
Total Living Area	1195.52 sq. ft.

All pictures, plans, layouts, information, data and details included in this brochure are indicative only and may change at any time up to the final ‘as built’ status in accordance with final designs of the project, regulatory approvals and planning permissions. All accessories and interior finishes such as wallpaper, chandeliers, furniture, electronics, white goods, curtains, hard and soft landscaping, pavements, features, gym, swimming pool(s) and other elements displayed in the brochure, or within the show apartment or between the plot boundary and the unit, are not part of the unit and are shown for illustrative purposes only.

TYPICAL PLAN

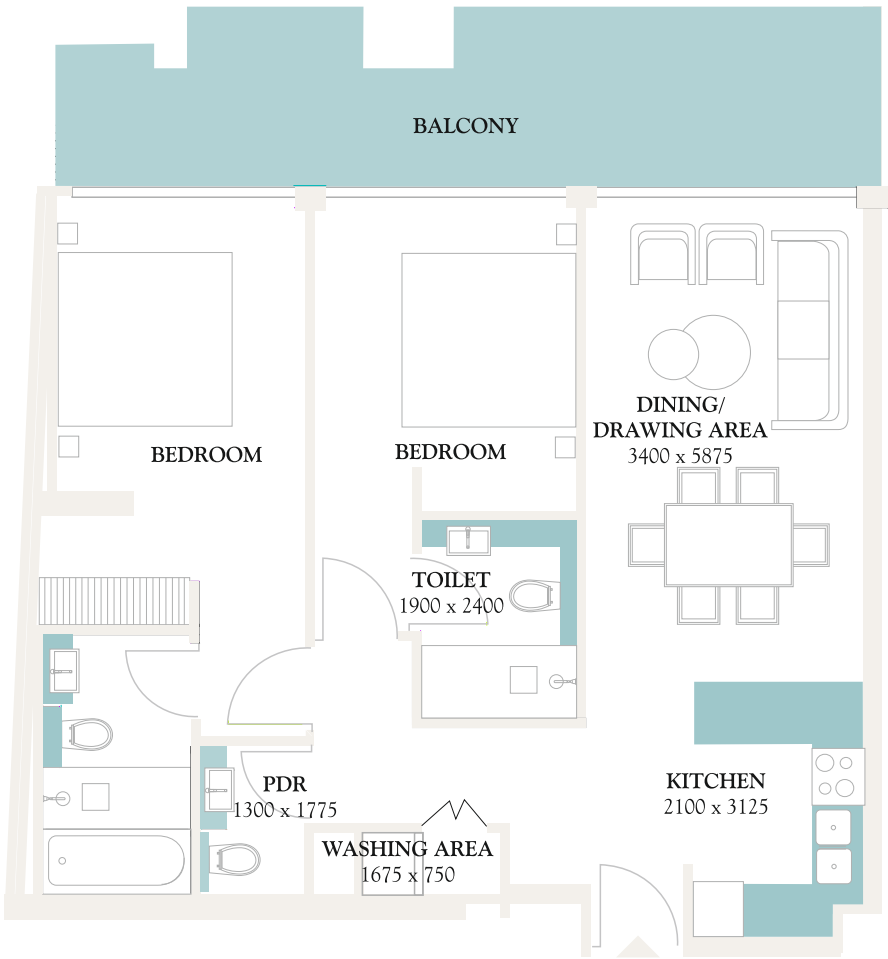
FLOOR LEVEL



KEY PLAN



2 BEDROOM | TYPE - D



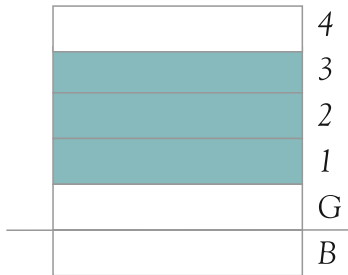
<i>Apartment</i>	102, 202, 302, 402
<i>Internal Living Area</i>	978.92 To 1035.75 sq. ft.
<i>Outdoor Living Area</i>	102.10 To 226.63 sq. ft.
<i>Total Living Area</i>	1137.86 To 1203.63 sq. ft.

All pictures, plans, layouts, information, data and details included in this brochure are indicative only and may change at any time up to the final ‘as built’ status in accordance with final designs of the project, regulatory approvals and planning permissions. All accessories and interior finishes such as wallpaper, chandeliers, furniture, electronics, white goods, curtains, hard and soft landscaping, pavements, features, gym, swimming pool(s) and other elements displayed in the brochure, or within the show apartment or between the plot boundary and the unit, are not part of the unit and are shown for illustrative purposes only.

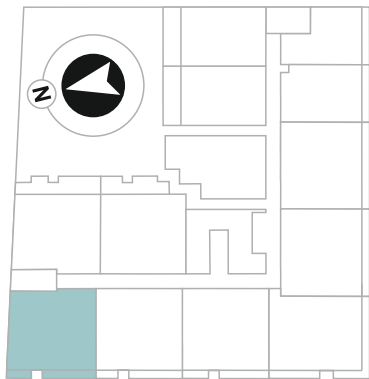
TYPICAL PLAN

2 BEDROOM | TYPE - E

FLOOR LEVEL



KEY PLAN



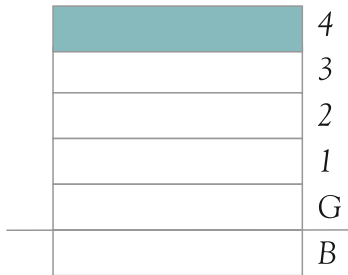
Apartment	103, 203, 303
Internal Living Area	1035.75 To 1043.96 sq. ft.
Outdoor Living Area	102.10 sq. ft.
Total Living Area	1137.86 To 1146.06 sq. ft.

All pictures, plans, layouts, information, data and details included in this brochure are indicative only and may change at any time up to the final 'as built' status in accordance with final designs of the project, regulatory approvals and planning permissions. All accessories and interior finishes such as wallpaper, chandeliers, furniture, electronics, white goods, curtains, hard and soft landscaping, pavements, features, gym, swimming pool(s) and other elements displayed in the brochure, or within the show apartment or between the plot boundary and the unit, are not part of the unit and are shown for illustrative purposes only.

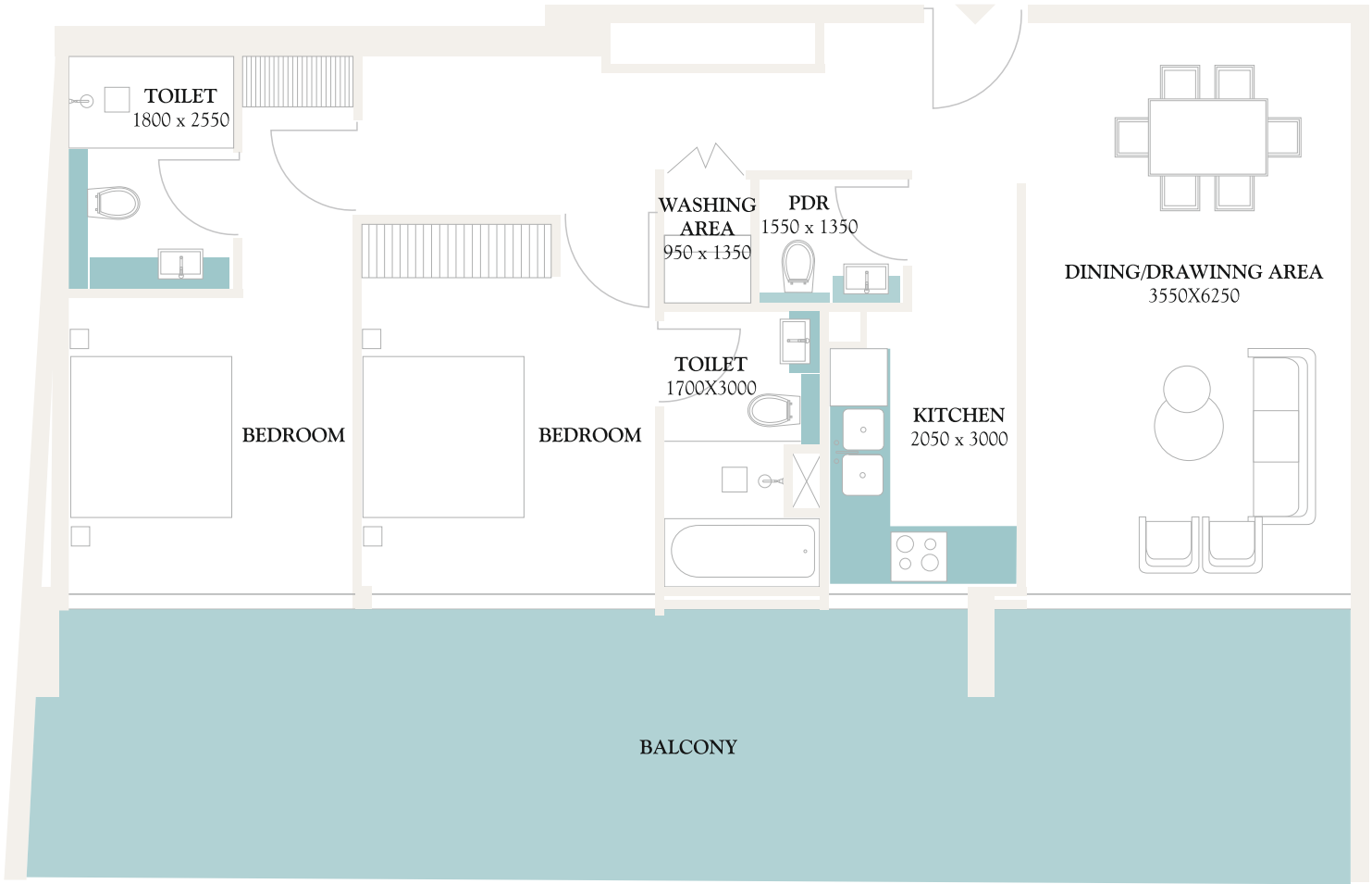
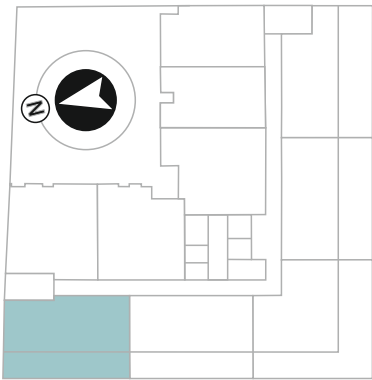
TYPICAL PLAN

2 BEDROOM | TYPE - F

FLOOR LEVEL



KEY PLAN



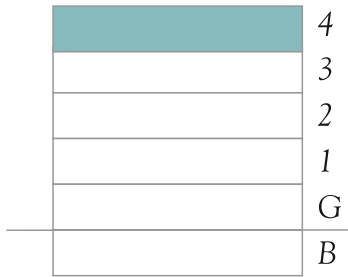
Apartment	403
Internal Living Area	977.94 sq. ft.
Outdoor Living Area	476.00 sq. ft.
Total Living Area	1453.94 sq. ft.

All pictures, plans, layouts, information, data and details included in this brochure are indicative only and may change at any time up to the final ‘as built’ status in accordance with final designs of the project, regulatory approvals and planning permissions. All accessories and interior finishes such as wallpaper, chandeliers, furniture, electronics, white goods, curtains, hard and soft landscaping, pavements, features, gym, swimming pool(s) and other elements displayed in the brochure, or within the show apartment or between the plot boundary and the unit, are not part of the unit and are shown for illustrative purposes only.

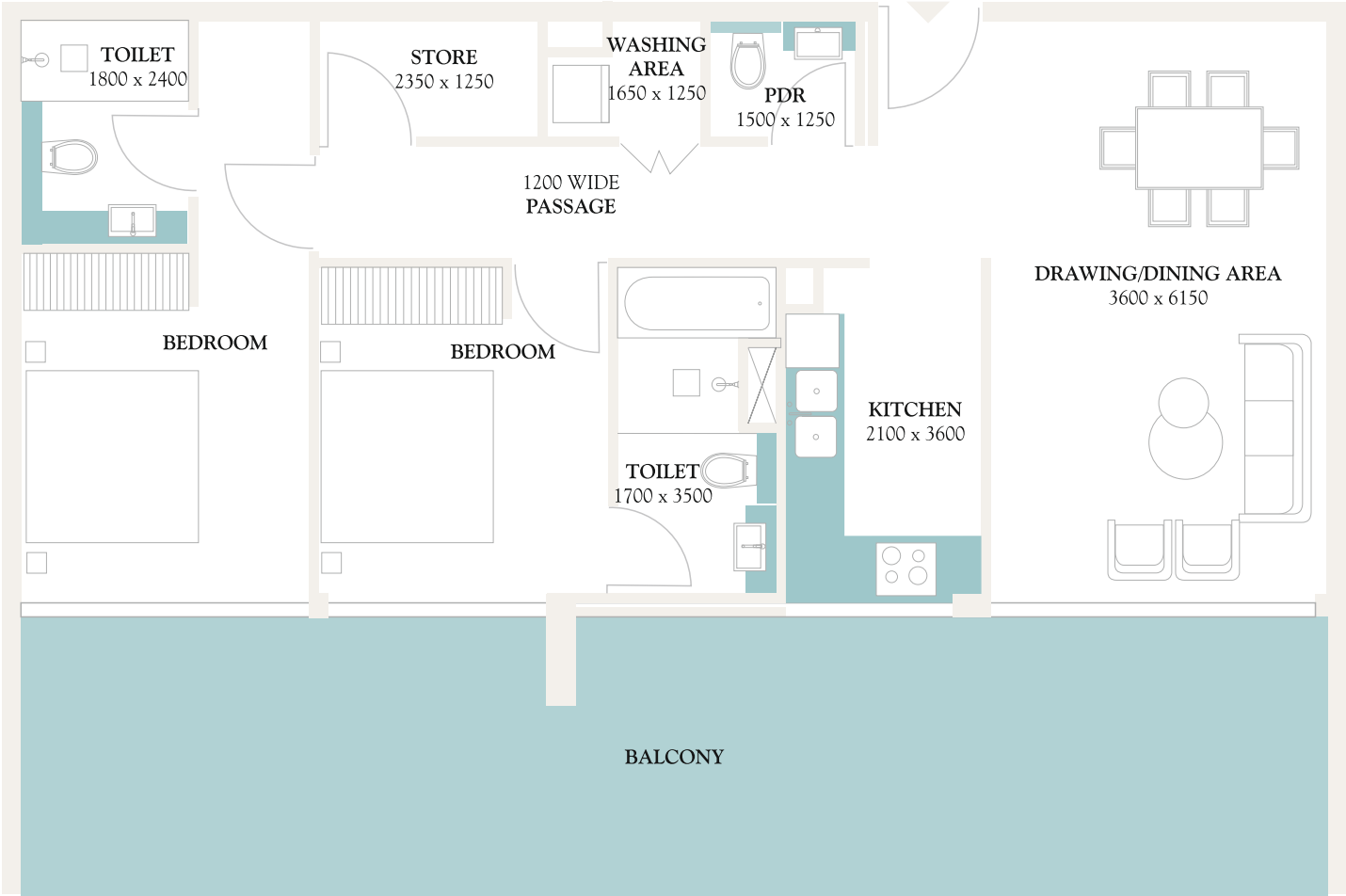
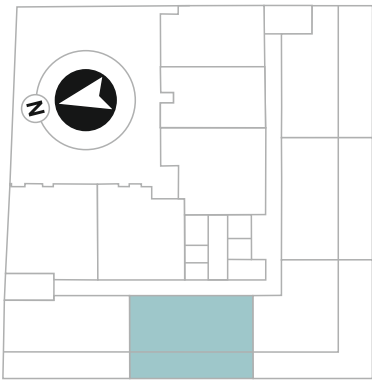
TYPICAL PLAN

2 BEDROOM | TYPE - G

FLOOR LEVEL



KEY PLAN



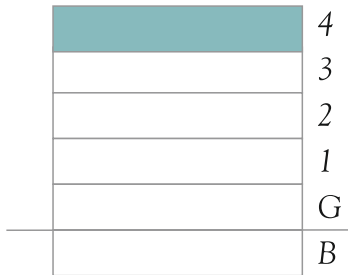
Apartment	404
Internal Living Area	984.09 sq. ft.
Outdoor Living Area	460.15 sq. ft.
Total Living Area	1444.24 sq. ft.

All pictures, plans, layouts, information, data and details included in this brochure are indicative only and may change at any time up to the final ‘as built’ status in accordance with final designs of the project, regulatory approvals and planning permissions. All accessories and interior finishes such as wallpaper, chandeliers, furniture, electronics, white goods, curtains, hard and soft landscaping, pavements, features, gym, swimming pool(s) and other elements displayed in the brochure, or within the show apartment or between the plot boundary and the unit, are not part of the unit and are shown for illustrative purposes only.

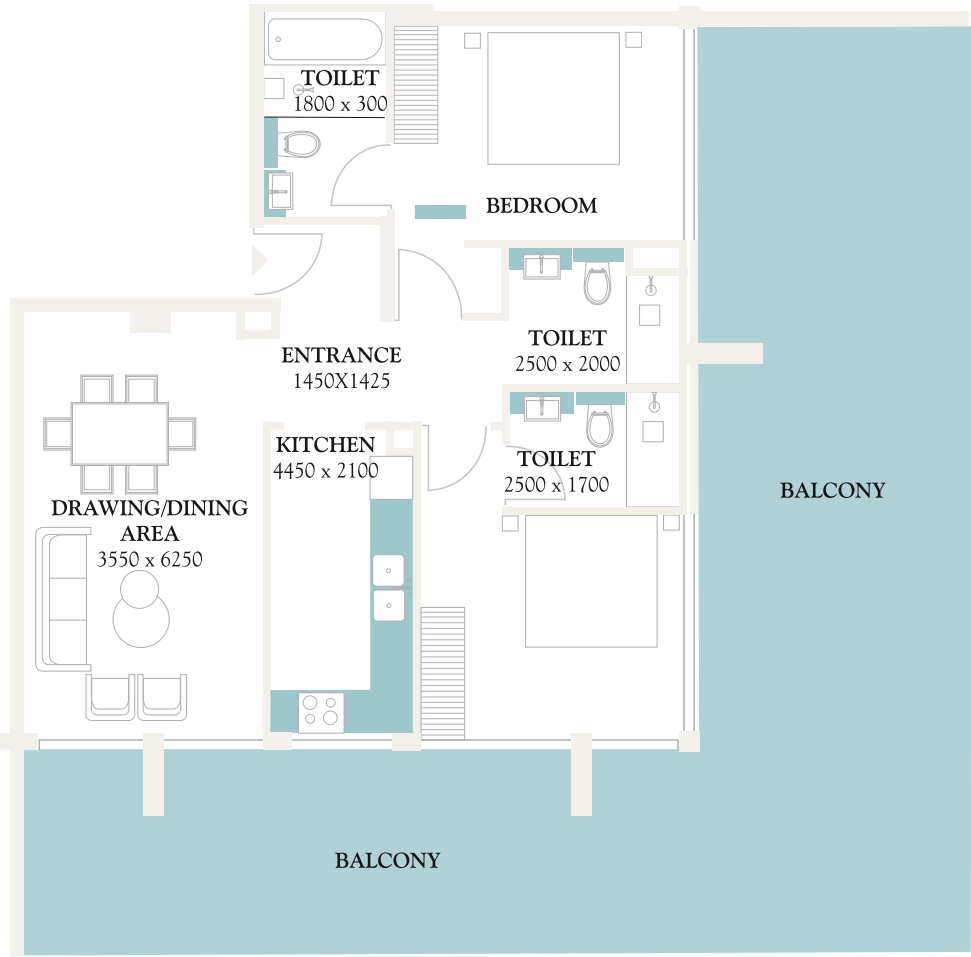
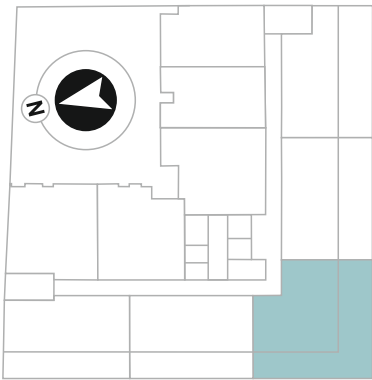
TYPICAL PLAN

2 BEDROOM | TYPE - H

FLOOR LEVEL



KEY PLAN

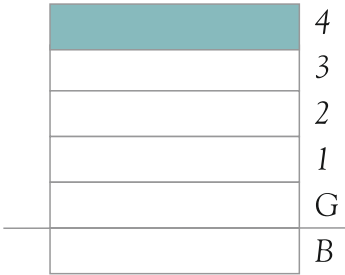


Apartment	405
Internal Living Area	982.69 sq. ft.
Outdoor Living Area	909.56 sq. ft.
Total Living Area	1892.25 sq. ft.

All pictures, plans, layouts, information, data and details included in this brochure are indicative only and may change at any time up to the final ‘as built’ status in accordance with final designs of the project, regulatory approvals and planning permissions. All accessories and interior finishes such as wallpaper, chandeliers, furniture, electronics, white goods, curtains, hard and soft landscaping, pavements, features, gym, swimming pool(s) and other elements displayed in the brochure, or within the show apartment or between the plot boundary and the unit, are not part of the unit and are shown for illustrative purposes only.

TYPICAL PLAN

FLOOR LEVEL



KEY PLAN



2 BEDROOM | TYPE - I

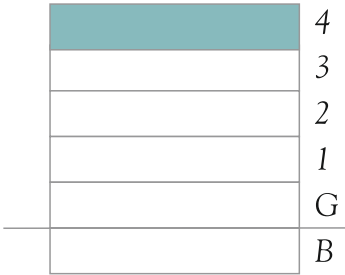


Apartment	406
Internal Living Area	977.92 sq. ft.
Outdoor Living Area	611.38 sq. ft.
Total Living Area	1589.35 sq. ft.

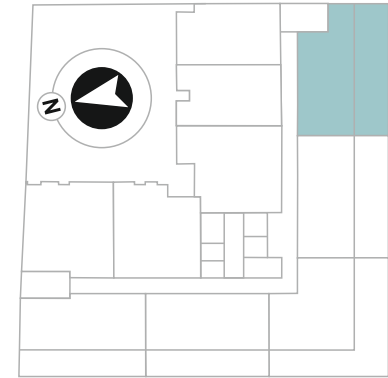
All pictures, plans, layouts, information, data and details included in this brochure are indicative only and may change at any time up to the final ‘as built’ status in accordance with final designs of the project, regulatory approvals and planning permissions. All accessories and interior finishes such as wallpaper, chandeliers, furniture, electronics, white goods, curtains, hard and soft landscaping, pavements, features, gym, swimming pool(s) and other elements displayed in the brochure, or within the show apartment or between the plot boundary and the unit, are not part of the unit and are shown for illustrative purposes only.

TYPICAL PLAN

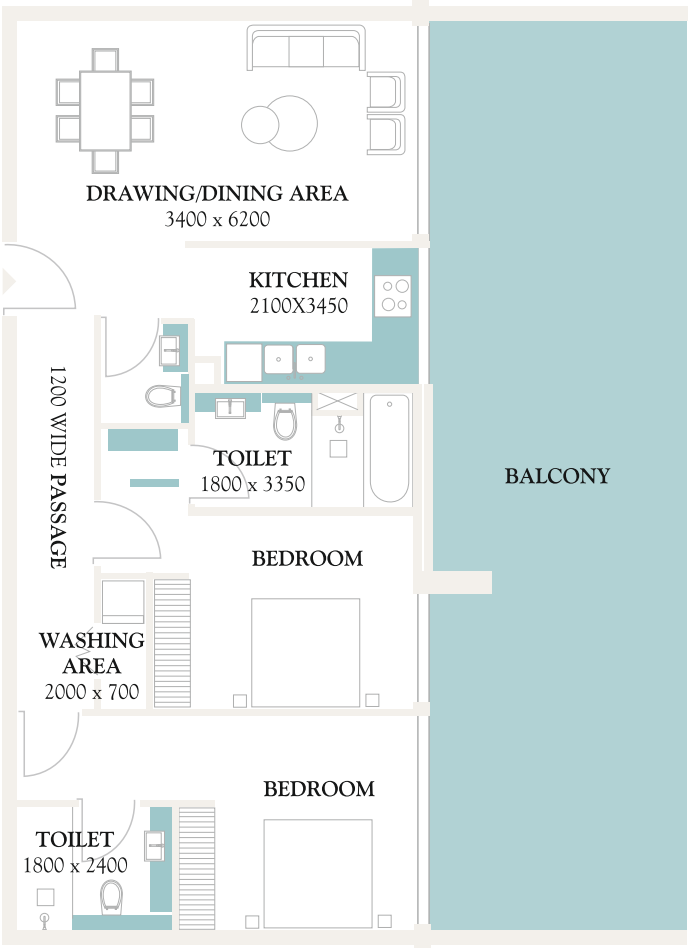
FLOOR LEVEL



KEY PLAN



2 BEDROOM | TYPE - J



Apartment	407
Internal Living Area	926.47 sq. ft.
Outdoor Living Area	645.83 sq. ft.
Total Living Area	1572.31 sq. ft.

All pictures, plans, layouts, information, data and details included in this brochure are indicative only and may change at any time up to the final ‘as built’ status in accordance with final designs of the project, regulatory approvals and planning permissions. All accessories and interior finishes such as wallpaper, chandeliers, furniture, electronics, white goods, curtains, hard and soft landscaping, pavements, features, gym, swimming pool(s) and other elements displayed in the brochure, or within the show apartment or between the plot boundary and the unit, are not part of the unit and are shown for illustrative purposes only.