

1 BHK - UNIT LAYOUT

Our 1 BHK apartments are designed to feature an exceptional living experience combined with tasteful elements to ensure you find all you need in a compact space. The key details in this plan are an ample living area and a massive master bedroom both complemented with a balcony, 2 bathrooms and a state-of-the-art kitchen.



UNIT TYPE	AREA APPROX (Min - Max)
1 BHK	726 Sq.ft - 1014 Sq.ft

Disclaimer: all pictures, plans, layouts, information, data and details included in this brochure are indicative only and may change at any time up to the final 'as built' status in accordance with the final designs of the project, regulatory approvals and planning permissions.

2 BHK - UNIT LAYOUTS

Comfort meets luxury in our spacious two-bedroom apartments that are integrated with upscale features engineered to enhance the overall opulence of the space. The space has a bold and contemporary design with spacious dining and living areas, 2 colossal bedrooms with 3 full bathrooms and a balcony through the length of it for a spectacular view of the Dubai land.

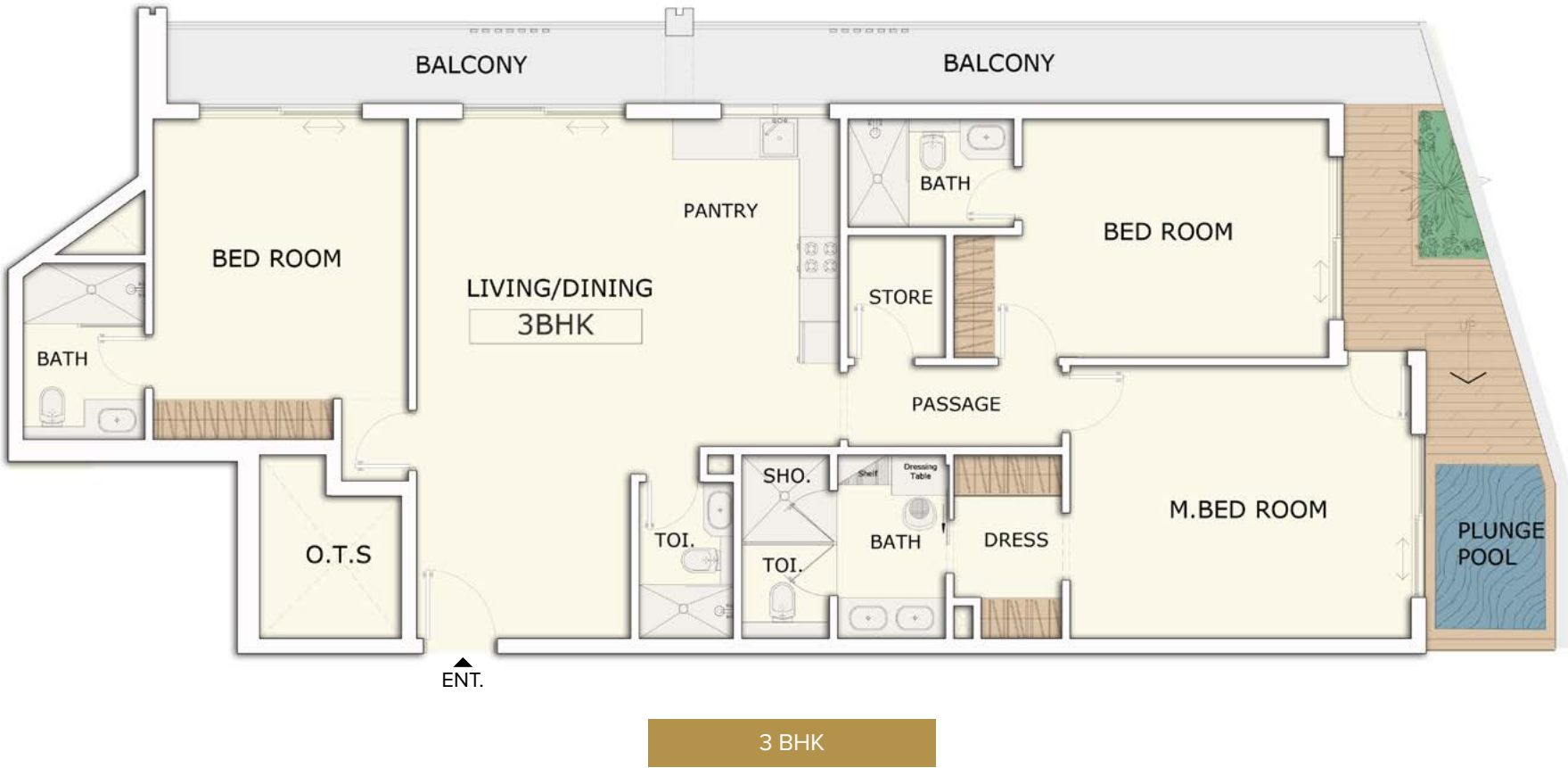


UNIT TYPE	AREA APPROX
2 BHK TYPE 1	FROM 1363 Sq.ft
2 BHK TYPE 2	FROM 1196 Sq.ft
2 BHK TYPE 3	FROM 1291 Sq.ft

Disclaimer: all pictures, plans, layouts, information, data and details included in this brochure are indicative only and may change at any time up to the final 'as built' status in accordance with the final designs of the project, regulatory approvals and planning permissions.

3 BHK - UNIT LAYOUT

A fine blend of superior comfort and luxurious spaciousness enriches the living experience. Dining and living areas which are crafted sumptuously perfectly complements the 3 opulent bedrooms which are flawlessly designed.



UNIT TYPE	AREA APPROX
3 BHK	FROM 1996 Sq.ft

Disclaimer: all pictures, plans, layouts, information, data and details included in this brochure are indicative only and may change at any time up to the final 'as built' status in accordance with the final designs of the project, regulatory approvals and planning permissions.



FIRST FLOOR			
UNIT TYPE	AREA APPROX	No. OF UNITS	UNIT COLOR
1 BHK	FROM 726 Sq.ft	6	
2 BHK	FROM 1363 Sq.ft	4	
3 BHK	FROM 1996 Sq.ft	1	

Disclaimer: all pictures, plans, layouts, information, data and details included in this brochure are indicative only and may change at any time up to the final 'as built' status in accordance with the final designs of the project, regulatory approvals and planning permissions.

SIGNATURE FLOOR (3rd FLOOR)



SECOND FLOOR			
UNIT TYPE	AREA APPROX	No. OF UNITS	UNIT COLOR
1 BHK	FROM 726 Sq.ft	12	
2 BHK	FROM 1363 Sq.ft	3	
3 BHK	FROM 1996 Sq.ft	2	

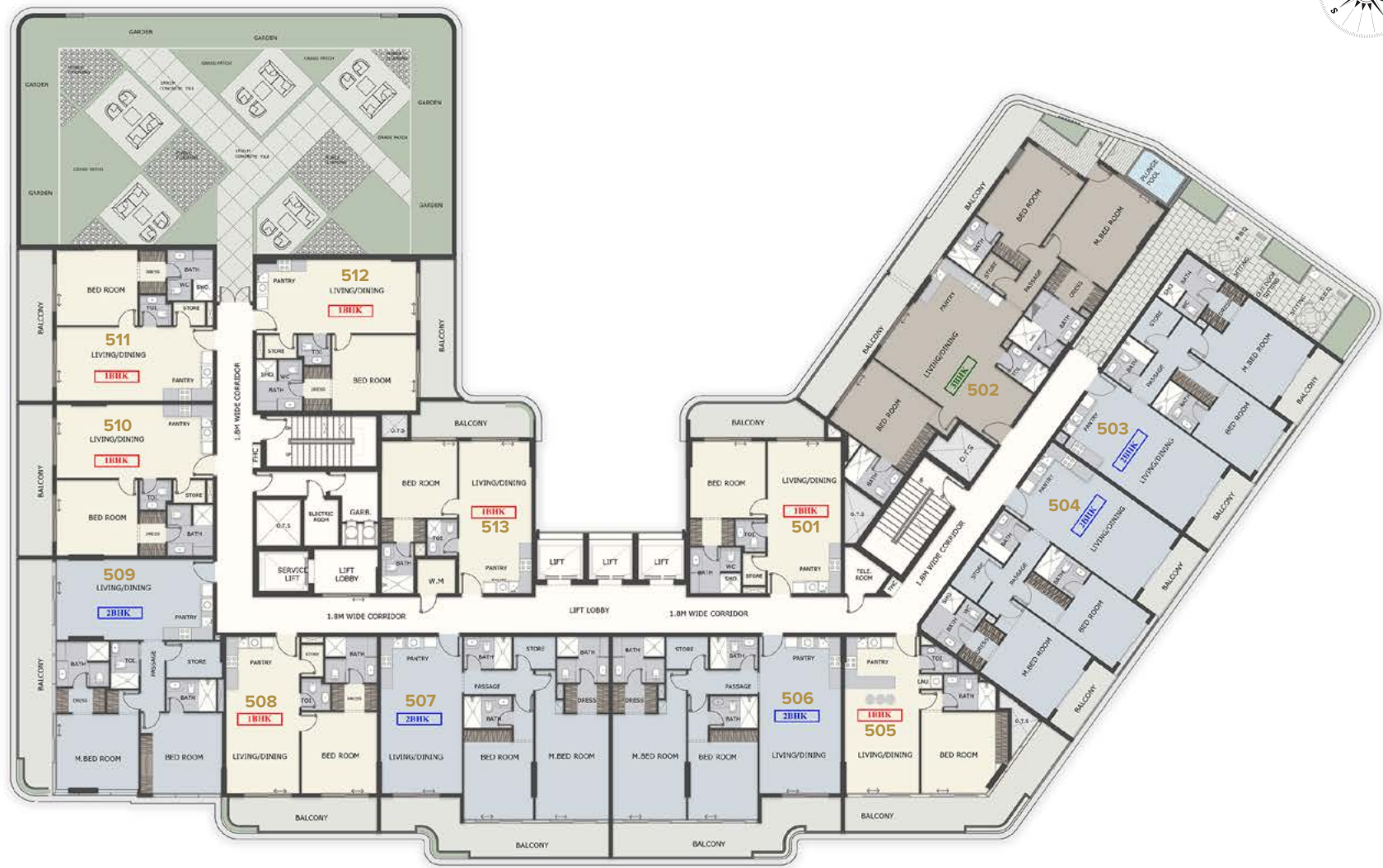
Disclaimer: all pictures, plans, layouts, information, data and details included in this brochure are indicative only and may change at any time up to the final 'as built' status in accordance with the final designs of the project, regulatory approvals and planning permissions.



THIRD & FOURTH FLOOR			
UNIT TYPE	AREA APPROX	No. OF UNITS	UNIT COLOR
1 BHK	FROM 726 Sq.ft	12	
2 BHK	FROM 1363 Sq.ft	3	
3 BHK	FROM 1996 Sq.ft	1	

Disclaimer: all pictures, plans, layouts, information, data and details included in this brochure are indicative only and may change at any time up to the final 'as built' status in accordance with the final designs of the project, regulatory approvals and planning permissions.

SIGNATURE FLOOR (5th FLOOR)



FIFTH & SIXTH FLOOR			
UNIT TYPE	AREA APPROX	No. OF UNITS	UNIT COLOR
1 BHK	FROM 726 Sq.ft	7	
2 BHK	FROM 1363 Sq.ft	5	
3 BHK	FROM 1996 Sq.ft	1	

Disclaimer: all pictures, plans, layouts, information, data and details included in this brochure are indicative only and may change at any time up to the final 'as built' status in accordance with the final designs of the project, regulatory approvals and planning permissions.

SIGNATURE Advantage

Above Expectations & Beyond Limitations



Safety Advantage

Safety is the foremost priority be it the roof gardens with heightened super-strong railings, the smart electrical system or the infinity pools replete with lifeguards.



Team Advantage

A Highly efficient, transparent and friendly team across all departments ensuring timely delivery of excellent services.



Environment Advantage

Energy-efficient equipment, centralized gas distribution system, light fixtures and sanitary ware with reduced carbon footprint providing green and Eco-Friendly solutions.



Health Advantage

Exquisite gymnasium facility with motivational environment driving occupants to stay and live healthily.



Security Advantage

Fully trained 24x7 security staff in addition to the access control system for all entries, exits and common areas.



Status Advantage

Most prestigious name in creating landmark projects which are naturally status symbols.



Planning Advantage

Designed, engineered and crafted with abundant common amenity spaces, so you effectively get 80% more space than what you pay for.



Aesthetic Advantage

Superiorly ornated elements, decorative ceilings, lively interactive spaces, customized elevators and beyond which are the most essential elements of Brand Marquis.



Quality Advantage

Dedicated quality control team supervising and ensuring the delivery of quality product from conception up until handover.



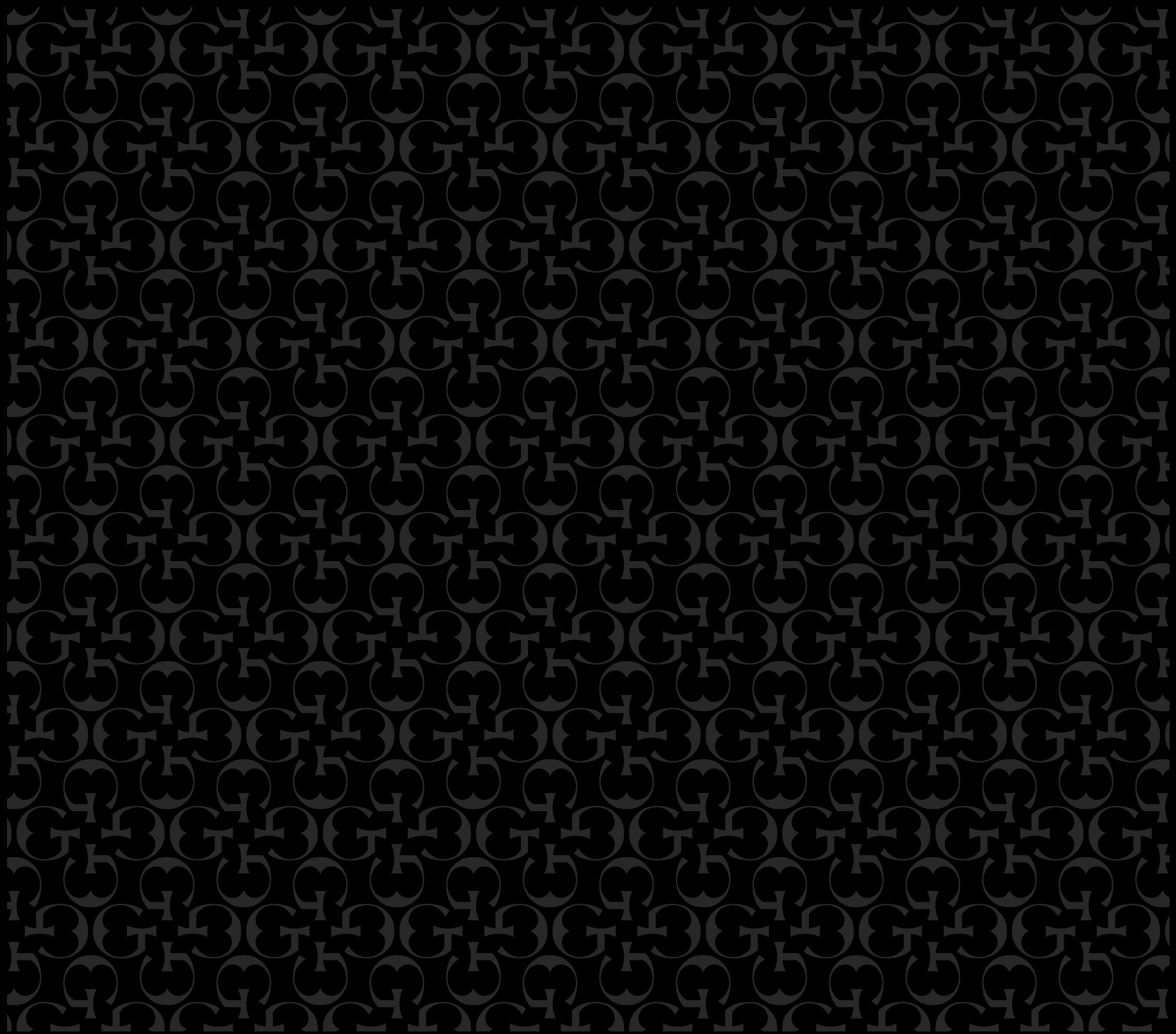
Asset Management Advantage

Super-efficient and well-trained in house asset management team ensuring revenue generation via rental income assuring great value for return on investment.



Building Management Advantage

Marquis Signature guidelines impose strict regulations for the property management and facility management team for upkeeping building maintenance as per our standards.



 **MARQUIS**
SIGNATURE

Developer Company
MARQUIS POINT REAL ESTATE LLC
United Arab Emirates
www.2020holdingsdubai.com

Disclaimer: The renderings and visualizations contained in this brochure are provided for illustrative and marketing purposes. While the information provided is believed to be accurate and reliable at the time of printing, only the information contained in the final sale and purchase agreement will have any legal effect.