

DAMAC

_____ cavalli _____

COUTURE

LUXURY, UNTAMED.



CAVALLI COUTURE

LUXURY UNTAMED

AT THE TOP OF EVERY ECOSYSTEM LIVE THOSE WHO FREE
THEMSELVES OF LIMITATIONS. THEY INHABIT A WORLD
WHERE OPULENCE IS UNLEASHED, AND THE TRAPPINGS OF
SOPHISTICATION FIND THEIR WILDEST FORMS OF EXPRESSION.
THAT WORLD HAS A NAME. ONE WHICH BLAZES NEW TRAILS
THROUGH UNCHARTED TERRITORIES OF REFINEMENT,
FLAMBOYANCE AND STYLE. IT IS CALLED CAVALLI COUTURE.





UNTOUCHED RAINFORESTS

CAVALLI COUTURE IS MORE THAN A PLACE TO LIVE.
IT IS A WAY OF LIFE, INSPIRED BY ONE OF OUR MOST
MAJESTIC NATURAL ENVIRONMENTS: AMAZONIA.
RICH IN GREENERY AND WATER FEATURES,
THIS LANDMARK GIVES THOSE AT THE APEX OF
SOCIETY THE OPPORTUNITY TO EXPERIENCE THE
WONDERS OF THE RAINFOREST, RIGHT HERE IN DUBAI.



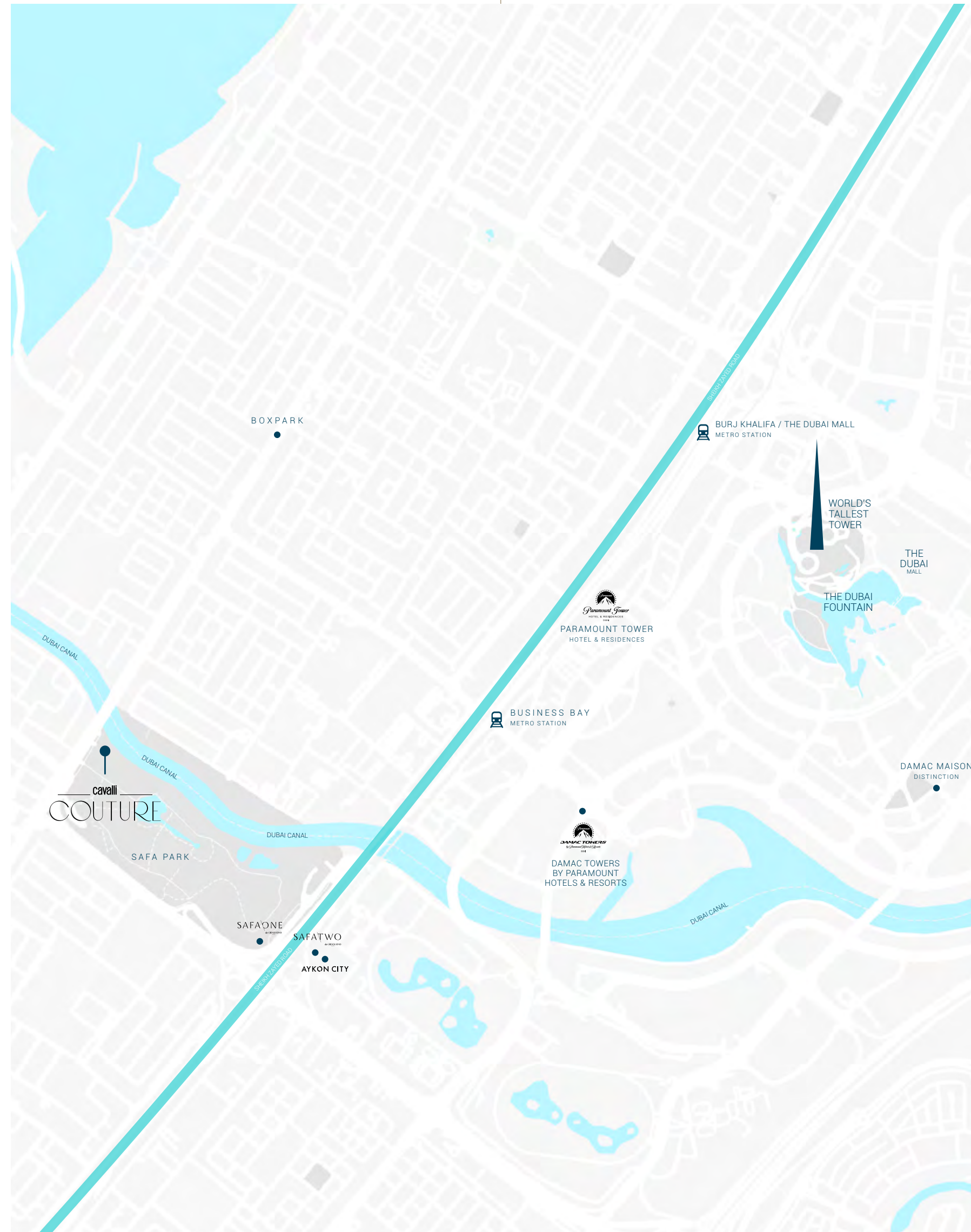


UNEQUALLED LOCATION

CAVALLI COUTURE STANDS IN THE HEART OF DUBAI, WHERE DOWNTOWN, SAFA PARK AND THE ICONIC CANAL MEET. A FEW MINUTES FROM BURJ KHALIFA, DUBAI MALL AND DUBAI INTERNATIONAL FINANCIAL CENTRE, AND A MERE 15 MINUTES DRIVE FROM DUBAI INTERNATIONAL AIRPORT, THE BUILDING IS STRATEGICALLY LOCATED TO GIVE YOU ACCESS TO GREEN FIELDS, WATERWAYS, AND THE HUSTLE AND BUSTLE OF THE CITY'S MAIN BUSINESS, LEISURE AND ENTERTAINMENT DISTRICTS.



CAVALLI COUTURE





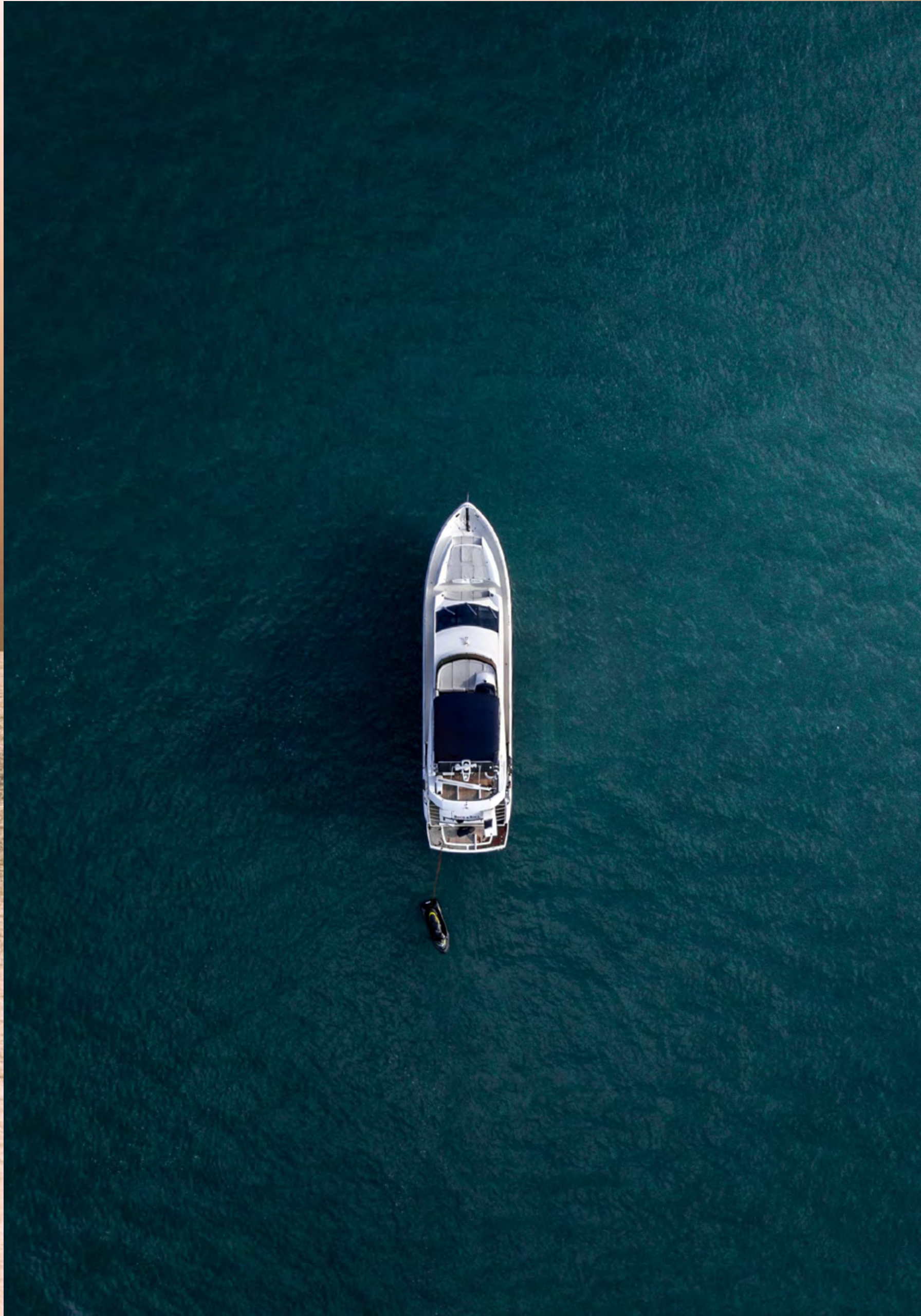










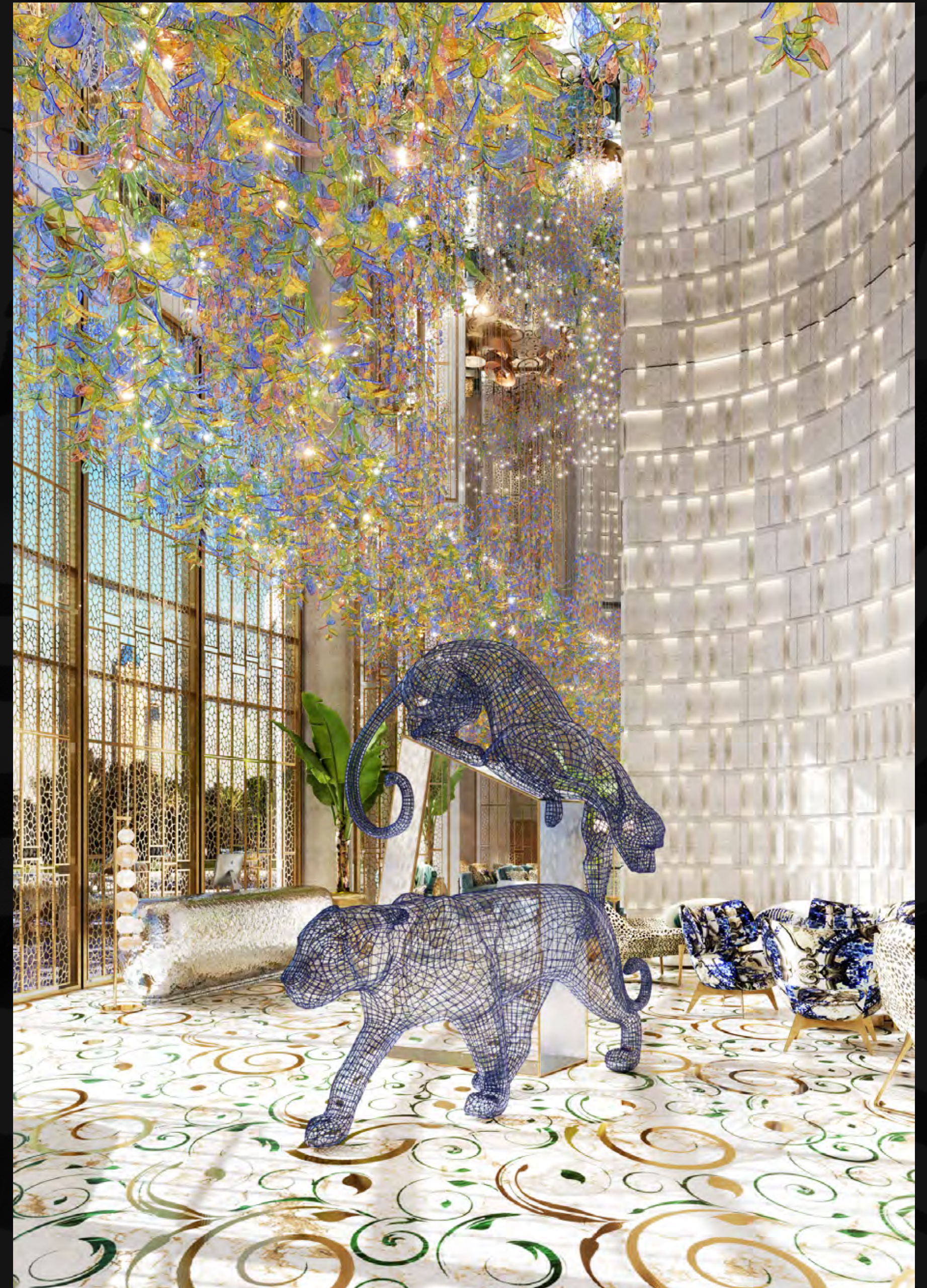


UNSEEN VIEWS

WHEN IT COMES TO DESCRIBING THE VIEWS
FROM CAVALLI COUTURE, BREATHTAKING MIGHT
BE AN UNDERSTATEMENT. IN A DUBAI FIRST,
THE BUILDING OFFERS PREVIOUSLY UNSEEN PANORAMAS
OF SAFA PARK'S TREES, PLANTS AND FLOWER-LINED
PATHWAYS FROM ONE SIDE, WHILE THE OTHER PRESENTS
YOU WITH A SWEEPING VISTA OF THE DUBAI CANAL,
BUSINESS BAY CROSSING AND THE PLACID
WATERS OF THE GULF.

UNENDING WELCOMES

WHEN YOU ENTER CAVALLI COUTURE, YOU ENTER
A TRIPLE-HEIGHT LOBBY WHICH NEVER STOPS
GREETING YOU. WHETHER IT IS THE VIBRANT
CAVALLI-DESIGNED INTERIOR THAT TRANSFORMS
THE FOYER INTO A BOLD CELEBRATION OF ANIMAL
PATTERNS AND COLOR OR THE UNOBSTRUCTED
VIEW OF THE CANAL BEYOND, THE BUILDING
MEETS YOU WITH INEXHAUSTIBLE FLAIR,
TIME AND TIME AGAIN.







UNIMAGINABLE SPACE

FROM THE RECEPTION AND PODIUM TO THE
TERRACES AND ROOFTOP, CAVALLI COUTURE HAS
BEEN DESIGNED TO OPTIMIZE SPACE IN WAYS WHICH
REMINDE YOU OF OPENINGS IN A FOREST,
WHERE DENSE FOLIAGE GIVES WAY TO SUNLIT GROVES,
AND THE CANOPY ABOVE YOUR HEAD PARTS
TO REVEAL A CLOUDLESS SKY.

UNBELIEVABLE LAGOONS

IF YOU THOUGHT LAGOONS WERE ONLY FOUND
IN THE GREAT OUTDOORS, THINK AGAIN.
IN AN UNPRECEDENTED ARCHITECTURAL
TOUR DE FORCE, CAVALLI COUTURE HOUSES ITS
VERY OWN INDOOR LAGOON. STRETCHING ACROSS
THE PODIUM, AND ENCIRCLED BY A LAZY RIVER,
THIS UNIQUE BODY OF WATER INVITES YOU TO
EXPLORE ITS NETWORK OF WALKWAYS,
LINKING DIFFERENT LEISURE, WELLNESS
AND DINING ZONES.





CAVALLI COUTURE

UNDAUNTED STYLE

ATTITUDE IS FLAUNTED AT CAVALLI COUTURE. WHILE THE TERRACES, POOLS AND FOLIAGE OF THE BUILDING'S EXTERIOR BRING THE JUNGLE TO DUBAI, THE INSIDE OF THE LANDMARK IS EQUALLY FLAMBOYANT, WITH WORLD-RENOWNED FASHION BRAND CAVALLI DESIGNING EVERY ASPECT OF THE INTERIOR. HERE, THE WALLS AND UPHOLSTERY ARE ADORNED WITH SIGNATURE ANIMAL PRINTS AND NATURAL MOTIFS THAT SWAGGER WITH CONFIDENCE.









ESPRESSO	2.00	2.10
KAKAO	1.80	2.50
KAKAO LATTE	2.20	
CHAI LATTE	1.40	
EXTRA SHOT	1.50	
EXTRA SODA	3.50	
HOT CHOCOLATE	3.0	
ESPRESSO	2.00	2.40
AMERICANO	2.80	3.80
CAPPUCCINO	2.00	2.50
ESPRESSO	2.40	
LATTE	3.20	
FLAT WHITE	3.80	
MILCHKAFFEE	3.90	
ESPRESSO	3.90	





CAVALLI





UNDISCOVERED ISLANDS

THE LAGOONS, WHICH GRACE THE PODIUM LEVEL,
ARE HOME TO AN ARCHIPELAGO OF ISLANDS,
EACH OFFERING A DISTINCT EXPERIENCE.

VISIT THE FIRST TO WORK OUT AT THE
FULLY-EQUIPPED GYM, THE SECOND TO PAMPER
YOURSELF AT THE LUXURY SPA, WHERE YOU CAN
ALSO ENJOY AN EXFOLIATING FISH PEDICURE,
AND THE THIRD TO SAMPLE A MOUTHWATERING
RANGE OF FINE DINING OPTIONS.









CAVALLI COUTURE



CAVALLI COUTURE

UNLIMITED HOMES

ALL UNITS AT CAVALLI COUTURE ARE SUPER LUXURY, AND DISTINGUISHED BY THE HIGHEST STANDARDS OF QUALITY AND CRAFTSMANSHIP. THE BUILDING BOASTS 3-BEDROOM TO 5-BEDROOM RESIDENCES AS WELL AS 6-BEDROOM ULTRA-LUXURY PENTHOUSES.

EACH OF ITS HOMES LAYS CLAIM TO A TERRACE WITH PERSONAL POOL AND UNBROKEN VIEWS OF THE DUBAI CANAL, PLUS ACCESS TO THE ROOFTOP INFINITY POOL AND RECREATION ZONE, WHERE THE FINER THINGS IN LIFE CAN BE APPRECIATED, FROM SUNRISE TO SUNSET.



UNMATCHED SOPHISTICATION

THE PINNACLE OF CAVALLI COUTURE? THE ULTRA LUXURY PENTHOUSES, WHERE THE ULTIMATE LIFESTYLE CAN BE LIVED. EACH 6-BEDROOM UNIT IS IMMACULATELY DESIGNED AND EXECUTED. THESE HOMES HAVE ACCESS TO THEIR OWN PRIVATE ROOFTOP SWIMMING POOLS TO COMPLEMENT THOSE ON THE TERRACES, AND ENJOY UNPRECEDENTED VIEWS OF BOTH THE DUBAI CANAL ON ONE SIDE, AND THE BOTANICAL DELIGHTS OF SAFA PARK ON THE OTHER.



CAVALLI COUTURE

FLOOR PLANS





DAMAC