

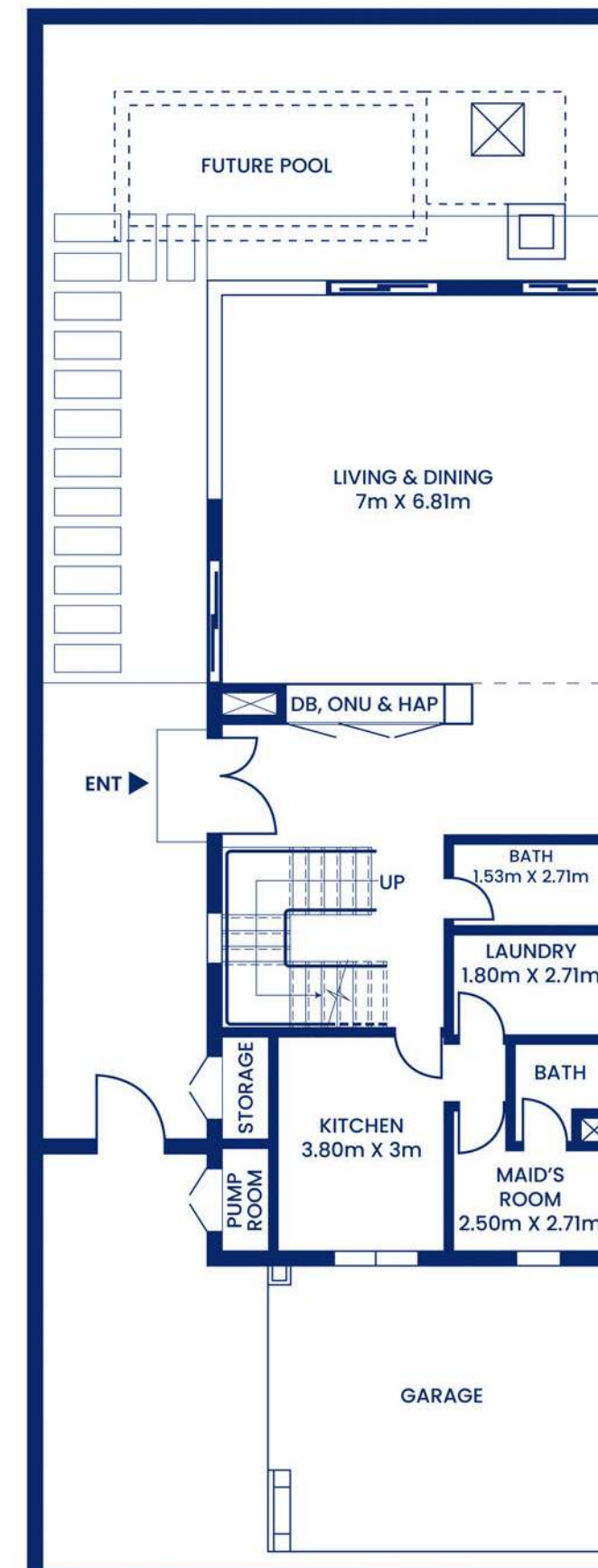
# CALIFORNIA VILLAGE

## TOWNHOUSE CORNER

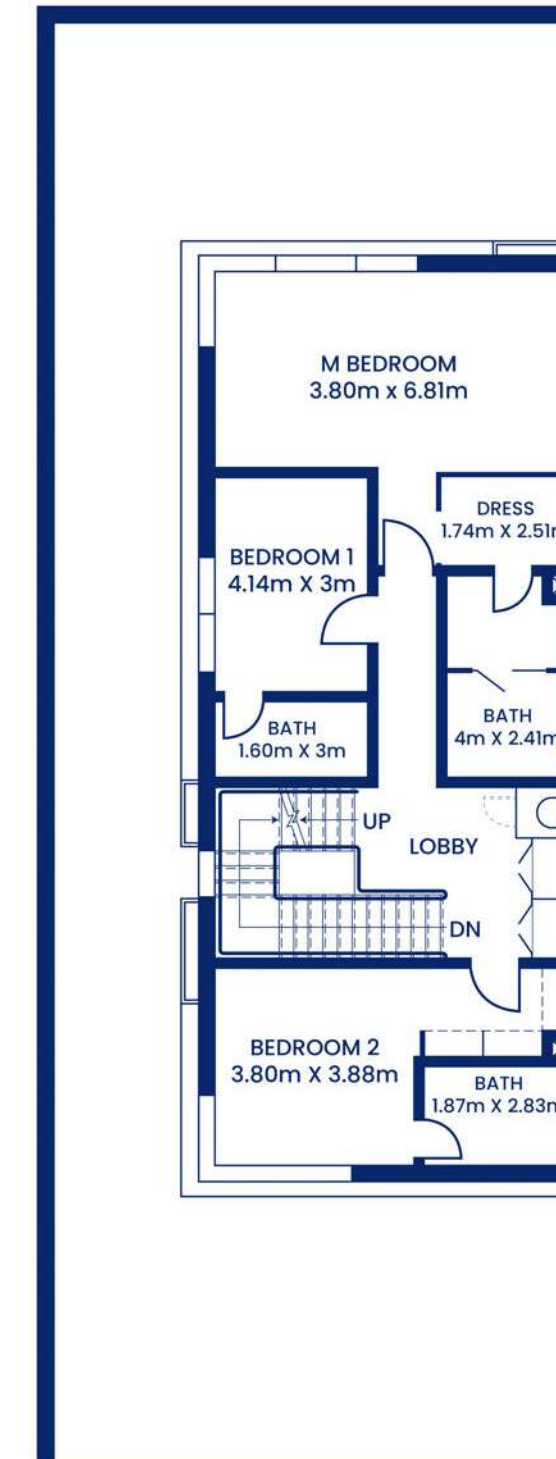
Built up Area: 3056 Sq.ft

Plot Area: 3,035 Sq.ft

### CALIFORNIA VILLAGE TOWNHOUSE (TYPE A & D)



GROUND FLOOR



FIRST FLOOR

# CALIFORNIA

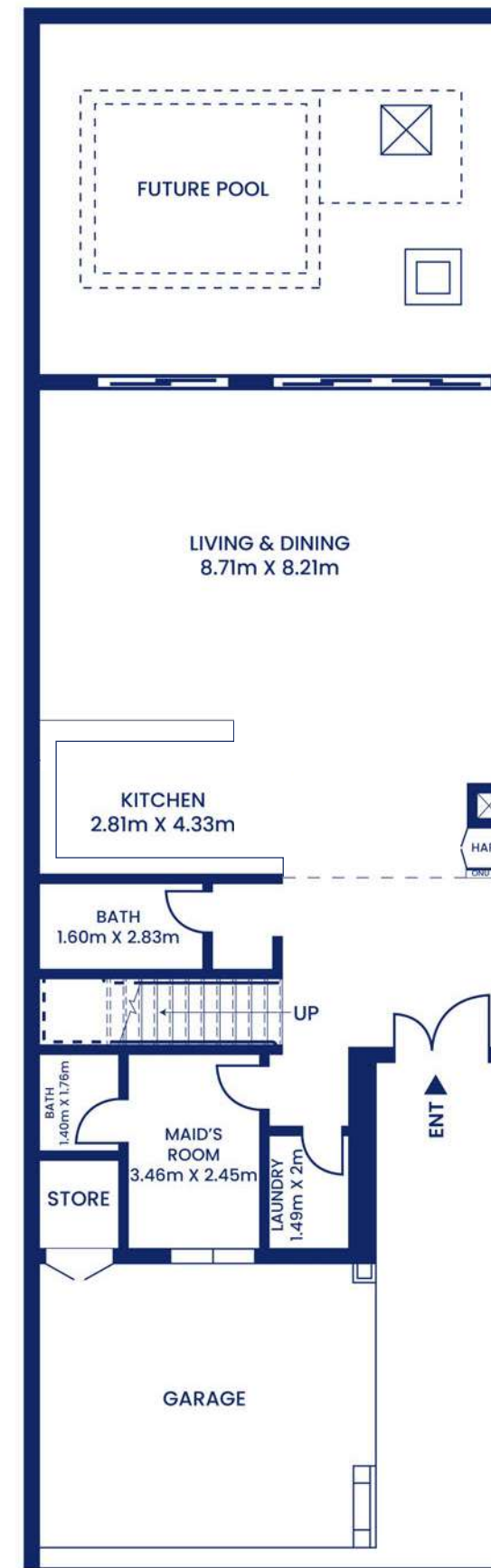
VILLAGE

## TOWNHOUSE

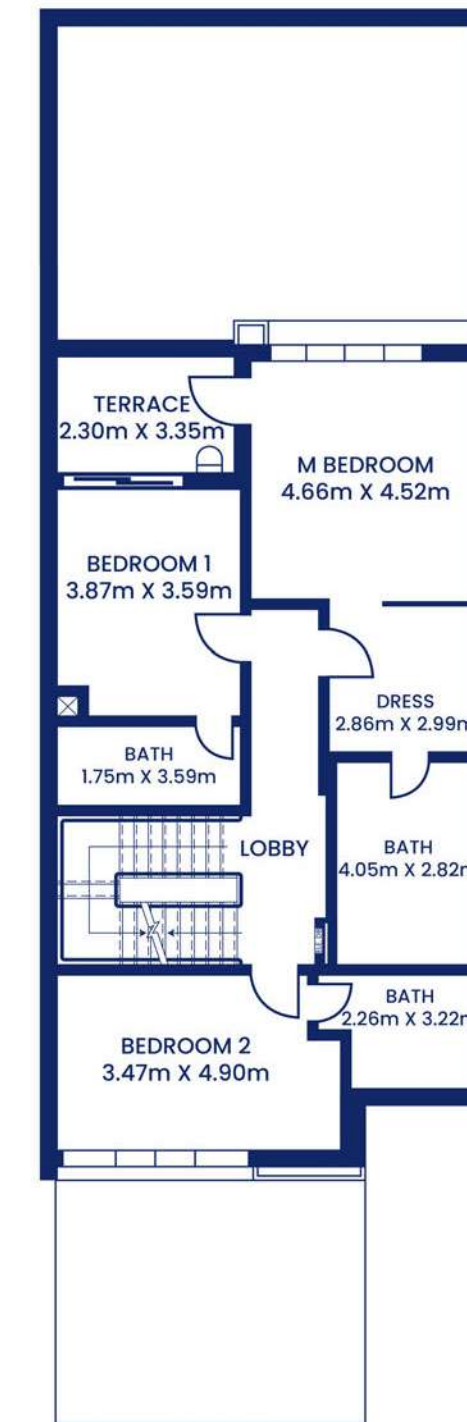
MIDDLE

Built up: 3128 Sq.ft  
Plot Area: 2,500 Sq.ft

### CALIFORNIA VILLAGE TOWNHOUSE (TYPE B & C)



GROUND FLOOR



FIRST FLOOR

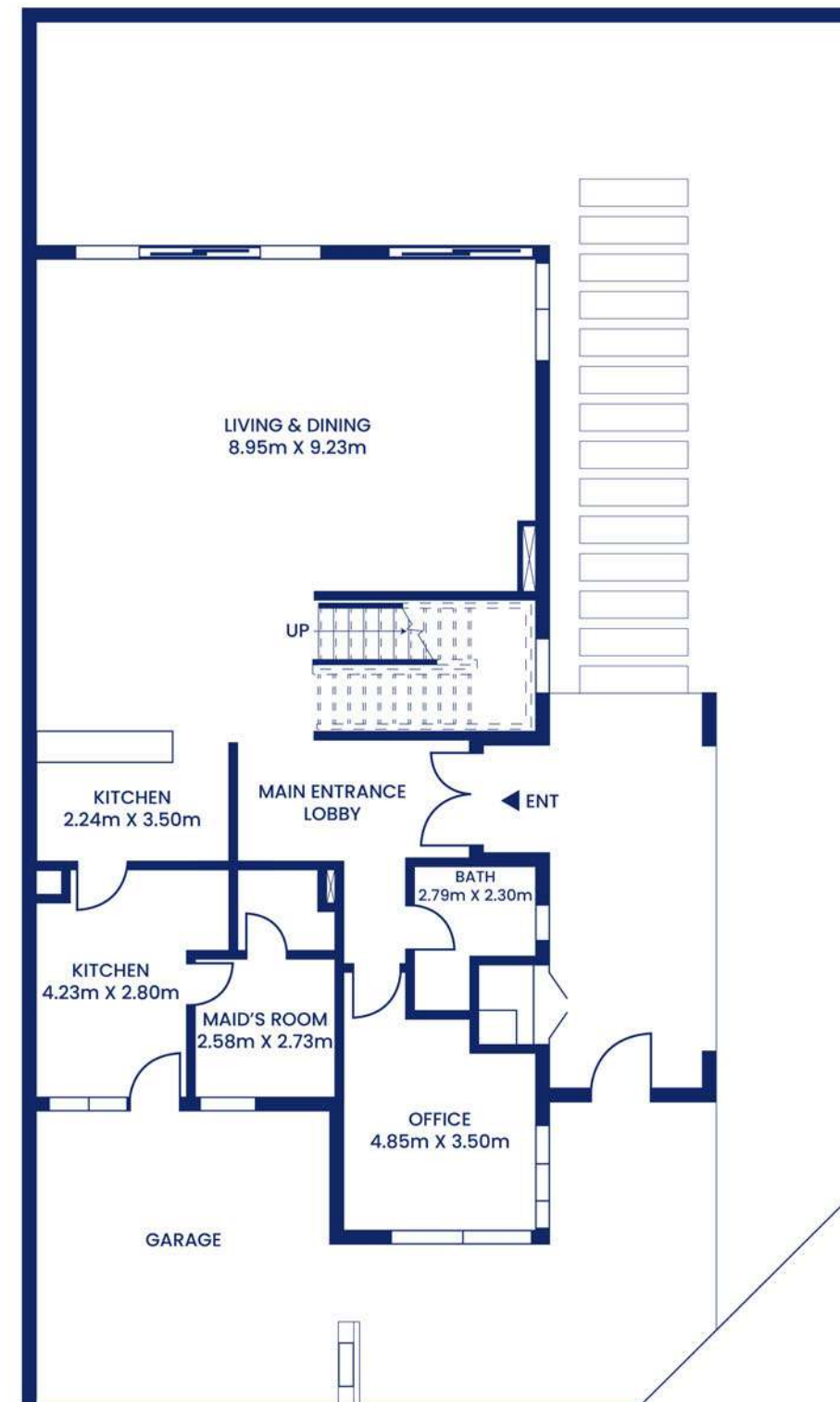
# CALIFORNIA VILLAGE

## TWIN VILLAS

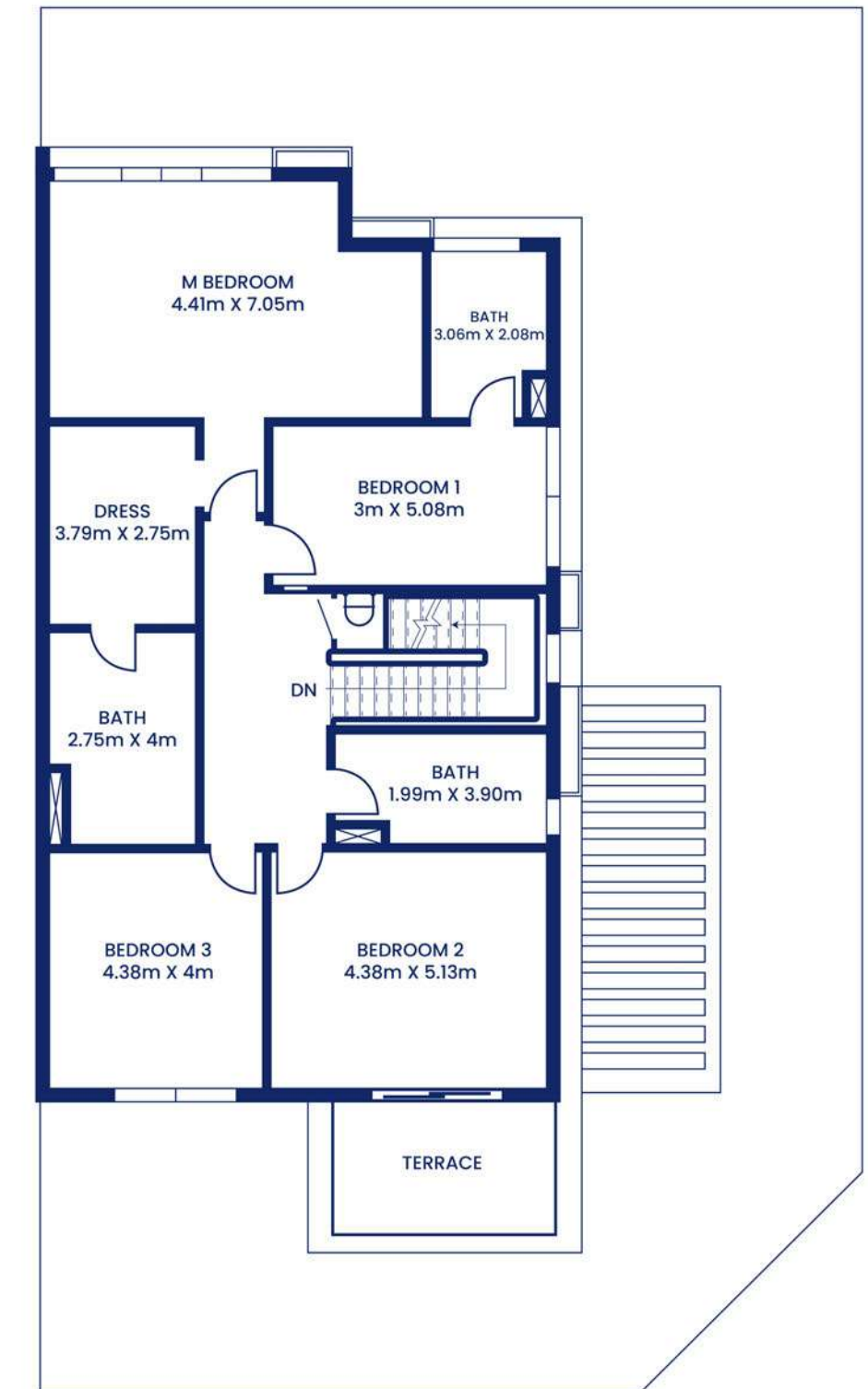
Built up: 4000 - 4141 Sq.ft  
Plot Area: 3,500 - 3,900 Sq.ft

### CALIFORNIA VILLAGE

#### TWIN VILLA



GROUND FLOOR



FIRST FLOOR