

DIFC Living

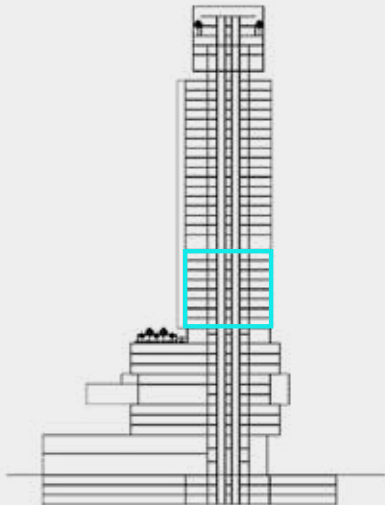
FLOOR PLAN

1 BEDROOM A

LEVEL 10-17

UNIT AREA

| | | |
|---------------|-------------|---------------|
| INTERNAL AREA | 54.93 SQ.M. | 591.26 SQ.FT. |
| EXTERNAL AREA | 5.59 SQ.M. | 60.17 SQ.FT. |
| TOTAL AREA | 60.52 SQ.M. | 651.43 SQ.FT. |



DISCLAIMER:

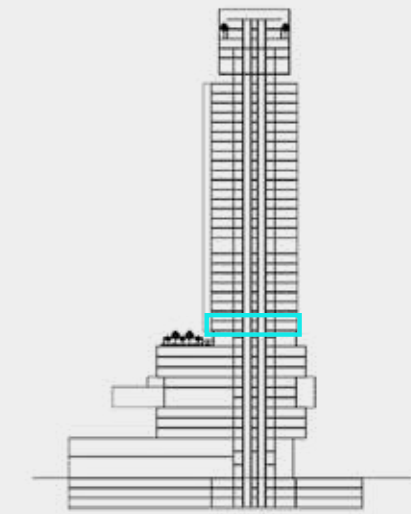
All measurements are indicative and are for marketing purposes only. All efforts have been made to ensure their accuracy, however these layouts are subject to change at the discretion of the developer and should not be relied upon as final. The actual area may vary from the stated area and the developer reserves the right to make the revisions/alterations, at its absolute discretion, without any liability whatsoever.

1 BEDROOM A1

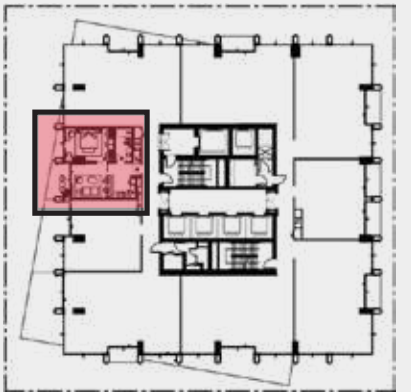
LEVEL 10

UNIT AREA

| | | |
|---------------|-------------|---------------|
| INTERNAL AREA | 54.93 SQ.M. | 591.26 SQ.FT. |
| EXTERNAL AREA | 11.67 SQ.M. | 125.61 SQ.FT. |
| TOTAL AREA | 66.59 SQ.M. | 716.87 SQ.FT. |



GATE AVENUE



DISCLAIMER:

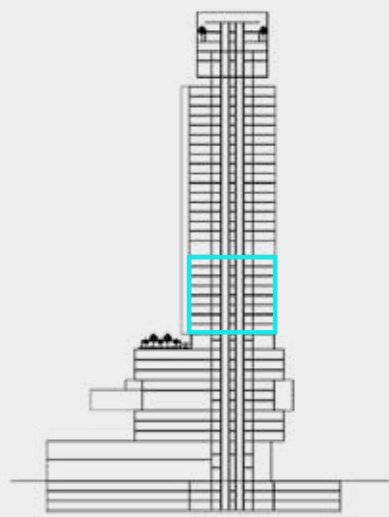
All measurements are indicative and are for marketing purposes only. All efforts have been made to ensure their accuracy, however these layouts are subject to change at the discretion of the developer and should not be relied upon as final. The actual area may vary from the stated area and the developer reserves the right to make the revisions/alterations, at its absolute discretion, without any liability whatsoever.

1 BEDROOM B

LEVEL 10-17

UNIT AREA

| | | |
|---------------|-------------|---------------|
| INTERNAL AREA | 58.36 SQ.M. | 628.18 SQ.FT. |
| EXTERNAL AREA | 11.69 SQ.M. | 125.82 SQ.FT. |
| TOTAL AREA | 70.05 SQ.M. | 754.00 SQ.FT. |

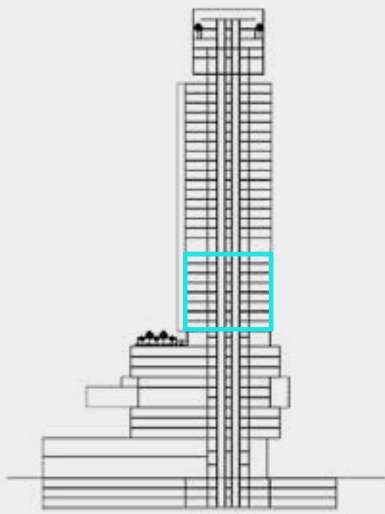


1 BEDROOM C

LEVEL 10-17

UNIT AREA

| | | | |
|---------------|-------------|--------|--------|
| INTERNAL AREA | 54.28 SQ.M. | 584.26 | SQ.FT. |
| EXTERNAL AREA | 5.59 SQ.M. | 60.17 | SQ.FT. |
| TOTAL AREA | 59.87 SQ.M. | 644.43 | SQ.FT. |



GATE AVENUE

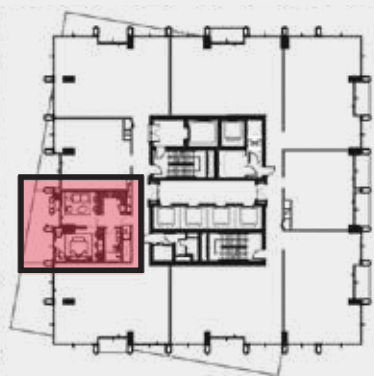
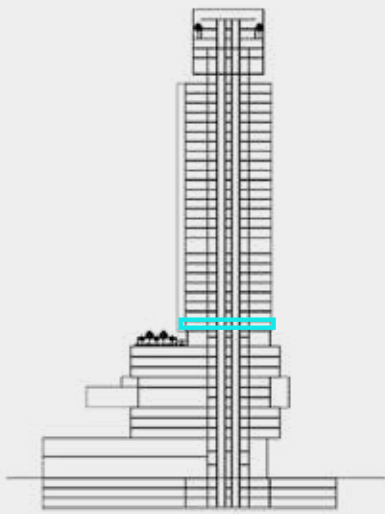


1 BEDROOM C1

LEVEL 10

UNIT AREA

| | | | | |
|---------------|-------|-------|--------|--------|
| INTERNAL AREA | 54.29 | SQ.M. | 584.37 | SQ.FT. |
| EXTERNAL AREA | 21.52 | SQ.M. | 231.63 | SQ.FT. |
| TOTAL AREA | 75.81 | SQ.M. | 816.00 | SQ.FT. |



DISCLAIMER:

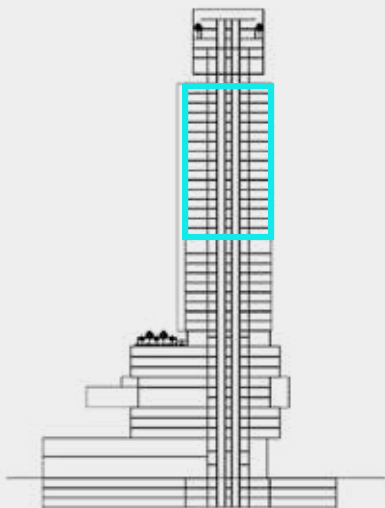
All measurements are indicative and are for marketing purposes only. All efforts have been made to ensure their accuracy, however these layouts are subject to change at the discretion of the developer and should not be relied upon as final. The actual area may vary from the stated area and the developer reserves the right to make the revisions/alterations, at its absolute discretion, without any liability whatsoever.

2 BEDROOM A

LEVEL 19-34

UNIT AREA

| | | | | |
|---------------|--------|-------|----------|--------|
| INTERNAL AREA | 121.04 | SQ.M. | 1,302.86 | SQ.FT. |
| EXTERNAL AREA | 11.45 | SQ.M. | 123.24 | SQ.FT. |
| TOTAL AREA | 132.49 | SQ.M. | 1,426.10 | SQ.FT. |



DISCLAIMER:

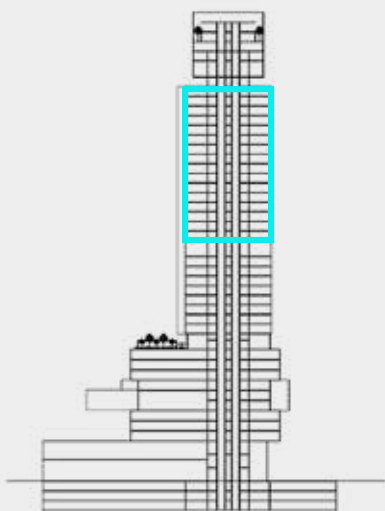
All measurements are indicative and are for marketing purposes only. All efforts have been made to ensure their accuracy, however these layouts are subject to change at the discretion of the developer and should not be relied upon as final. The actual area may vary from the stated area and the developer reserves the right to make the revisions/alterations, at its absolute discretion, without any liability whatsoever.

2 BEDROOM B

LEVEL 19-34

UNIT AREA

| | | | | |
|---------------|--------|-------|----------|--------|
| INTERNAL AREA | 107.56 | SQ.M. | 1,157.76 | SQ.FT. |
| EXTERNAL AREA | 11.08 | SQ.M. | 119.26 | SQ.FT. |
| TOTAL AREA | 118.64 | SQ.M. | 1,277.02 | SQ.FT. |



DISCLAIMER:

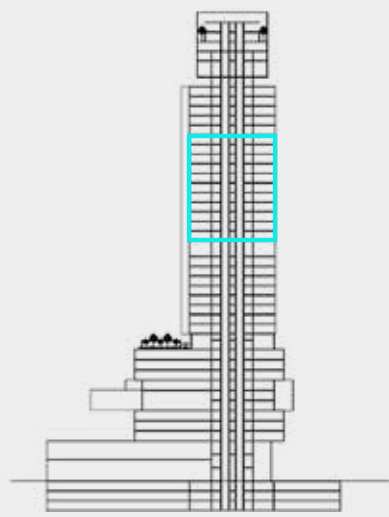
All measurements are indicative and are for marketing purposes only. All efforts have been made to ensure their accuracy, however these layouts are subject to change at the discretion of the developer and should not be relied upon as final. The actual area may vary from the stated area and the developer reserves the right to make the revisions/alterations, at its absolute discretion, without any liability whatsoever.

2 BEDROOM C

LEVEL 19-29

UNIT AREA

| | | | |
|---------------|--------------|----------|--------|
| INTERNAL AREA | 117.08 SQ.M. | 1,260.23 | SQ.FT. |
| EXTERNAL AREA | 11.41 SQ.M. | 122.81 | SQ.FT. |
| TOTAL AREA | 128.49 SQ.M. | 1,383.04 | SQ.FT. |

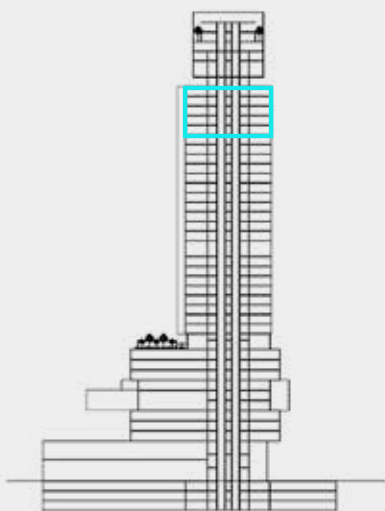


3 BEDROOM A

LEVEL 31-34

UNIT AREA

| | | | | |
|---------------|--------|-------|----------|--------|
| INTERNAL AREA | 189.24 | SQ.M. | 2,036.96 | SQ.FT. |
| EXTERNAL AREA | 16.22 | SQ.M. | 174.59 | SQ.FT. |
| TOTAL AREA | 205.46 | SQ.M. | 2,211.55 | SQ.FT. |



GATE AVENUE



DISCLAIMER:

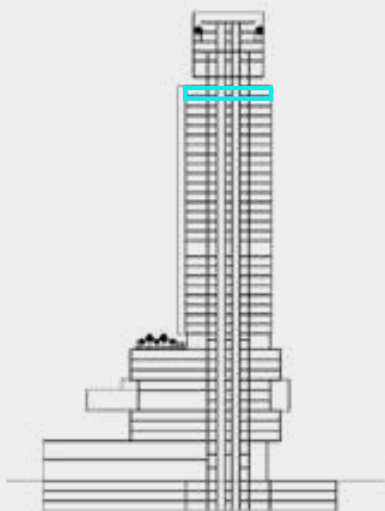
All measurements are indicative and are for marketing purposes only. All efforts have been made to ensure their accuracy, however these layouts are subject to change at the discretion of the developer and should not be relied upon as final. The actual area may vary from the stated area and the developer reserves the right to make the revisions/alterations, at its absolute discretion, without any liability whatsoever.

3 BEDROOM B

LEVEL 34

UNIT AREA

| | | | |
|---------------|--------------|----------|--------|
| INTERNAL AREA | 178.78 SQ.M. | 1,924.37 | SQ.FT. |
| EXTERNAL AREA | 22.07 SQ.M. | 237.55 | SQ.FT. |
| TOTAL AREA | 200.85 SQ.M. | 2,161.92 | SQ.FT. |



GATE AVENUE



DISCLAIMER:

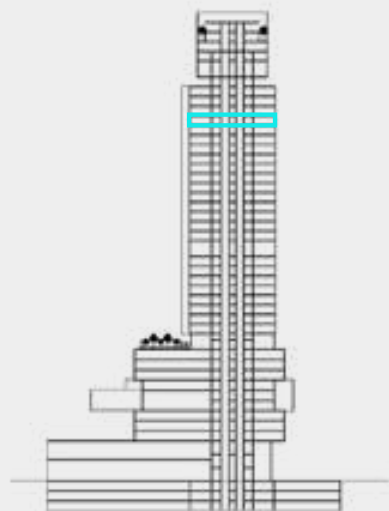
All measurements are indicative and are for marketing purposes only. All efforts have been made to ensure their accuracy, however these layouts are subject to change at the discretion of the developer and should not be relied upon as final. The actual area may vary from the stated area and the developer reserves the right to make the revisions/alterations, at its absolute discretion, without any liability whatsoever.

3 BEDROOM LOFT

LOWER LEVEL
LEVEL 31

UNIT AREA

| | | | |
|---------------|--------------|----------|--------|
| INTERNAL AREA | 189.42 SQ.M. | 2,038.89 | SQ.FT. |
| EXTERNAL AREA | 32.52 SQ.M. | 350.04 | SQ.FT. |
| TOTAL AREA | 221.94 SQ.M. | 2,388.93 | SQ.FT. |



3 BEDROOM LOFT

UPPER LEVEL
LEVEL 32

UNIT AREA

| | | | | |
|---------------|--------|-------|----------|--------|
| INTERNAL AREA | 189.42 | SQ.M. | 2,038.89 | SQ.FT. |
| EXTERNAL AREA | 32.52 | SQ.M. | 350.04 | SQ.FT. |
| TOTAL AREA | 221.94 | SQ.M. | 2,388.93 | SQ.FT. |



DISCLAIMER:

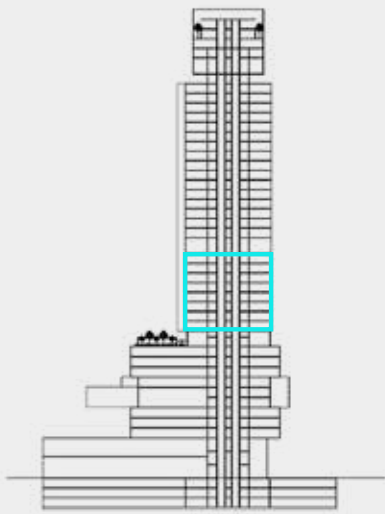
All measurements are indicative and are for marketing purposes only. All efforts have been made to ensure their accuracy, however these layouts are subject to change at the discretion of the developer and should not be relied upon as final. The actual area may vary from the stated area and the developer reserves the right to make the revisions/alterations, at its absolute discretion, without any liability whatsoever.

EXECUTIVE
1 BEDROOM A

LEVEL 10-17

UNIT AREA

| | | |
|---------------|-------------|-----------------|
| INTERNAL AREA | 90.38 SQ.M. | 972.84 SQ.FT. |
| EXTERNAL AREA | 5.72 SQ.M. | 61.56 SQ.FT. |
| TOTAL AREA | 96.10 SQ.M. | 1,034.40 SQ.FT. |



DISCLAIMER:

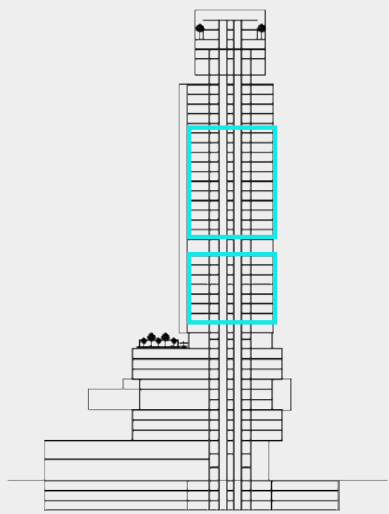
All measurements are indicative and are for marketing purposes only. All efforts have been made to ensure their accuracy, however these layouts are subject to change at the discretion of the developer and should not be relied upon as final. The actual area may vary from the stated area and the developer reserves the right to make the revisions/alterations, at its absolute discretion, without any liability whatsoever.

EXECUTIVE
1 BEDROOM B

LEVEL 11-17
LEVEL 19-30

UNIT AREA

| | | | |
|---------------|-------------|----------|--------|
| INTERNAL AREA | 93.60 SQ.M. | 1,007.50 | SQ.FT. |
| EXTERNAL AREA | 5.70 SQ.M. | 61.35 | SQ.FT. |
| TOTAL AREA | 99.30 SQ.M. | 1,068.85 | SQ.FT. |



DISCLAIMER:

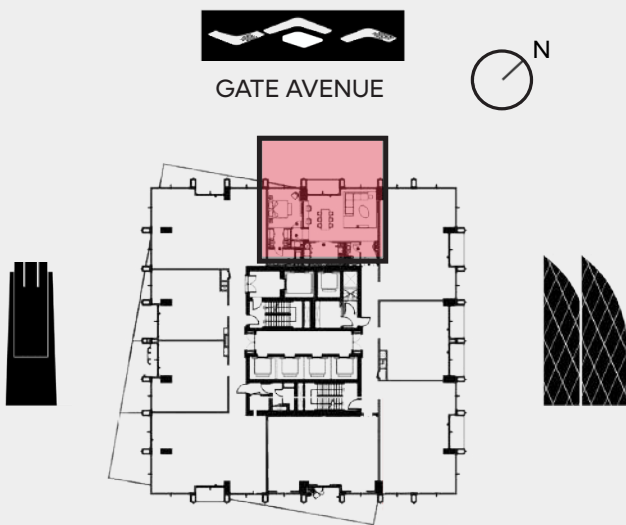
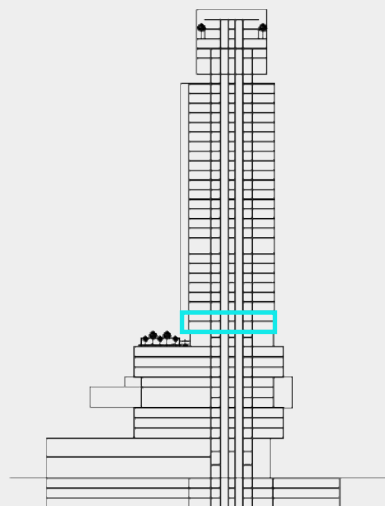
All measurements are indicative and are for marketing purposes only. All efforts have been made to ensure their accuracy, however these layouts are subject to change at the discretion of the developer and should not be relied upon as final. The actual area may vary from the stated area and the developer reserves the right to make the revisions/alterations, at its absolute discretion, without any liability whatsoever.

EXECUTIVE
1 BEDROOM B1

LEVEL 10

UNIT AREA

| | | |
|---------------|--------------|-----------------|
| INTERNAL AREA | 93.60 SQ.M. | 1,007.50 SQ.FT. |
| EXTERNAL AREA | 6.66 SQ.M. | 71.68 SQ.FT. |
| TOTAL AREA | 100.26 SQ.M. | 1,079.18 SQ.FT. |



DISCLAIMER:

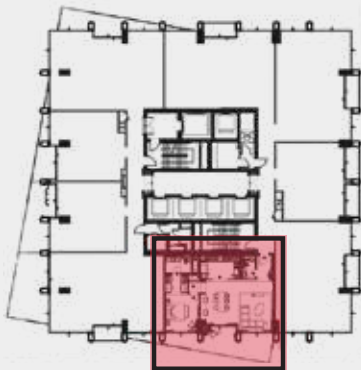
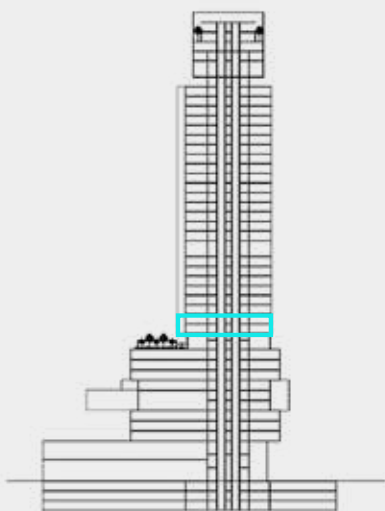
All measurements are indicative and are for marketing purposes only. All efforts have been made to ensure their accuracy, however these layouts are subject to change at the discretion of the developer and should not be relied upon as final. The actual area may vary from the stated area and the developer reserves the right to make the revisions/alterations, at its absolute discretion, without any liability whatsoever.

EXECUTIVE
1 BEDROOM B2

LEVEL 10

UNIT AREA

| | | | |
|---------------|--------------|----------|--------|
| INTERNAL AREA | 93.52 SQ.M. | 1,006.63 | SQ.FT. |
| EXTERNAL AREA | 28.41 SQ.M. | 305.80 | SQ.FT. |
| TOTAL AREA | 121.93 SQ.M. | 1,312.43 | SQ.FT. |



DISCLAIMER:

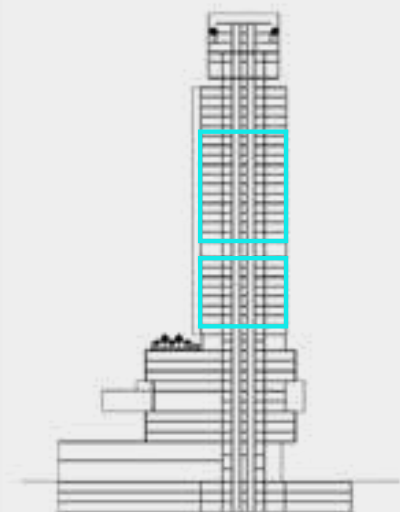
All measurements are indicative and are for marketing purposes only. All efforts have been made to ensure their accuracy, however these layouts are subject to change at the discretion of the developer and should not be relied upon as final. The actual area may vary from the stated area and the developer reserves the right to make the revisions/alterations, at its absolute discretion, without any liability whatsoever.

EXECUTIVE
1 BEDROOM C

LEVEL 11-17
LEVEL 19-30

UNIT AREA

| | | | |
|---------------|--------------|----------|--------|
| INTERNAL AREA | 97.22 SQ.M. | 1,046.46 | SQ.FT. |
| EXTERNAL AREA | 4.96 SQ.M. | 53.38 | SQ.FT. |
| TOTAL AREA | 102.18 SQ.M. | 1,099.84 | SQ.FT. |



GATE AVENUE

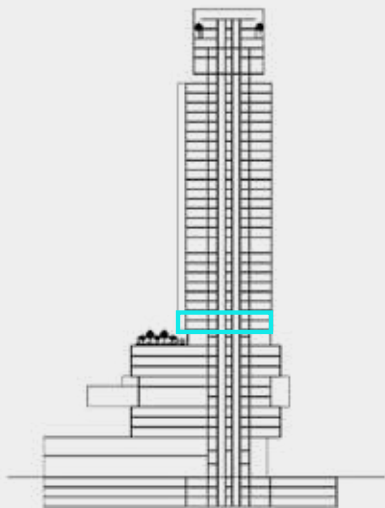


EXECUTIVE 1 BEDROOM C1

LEVEL 10

UNIT AREA

| | | |
|---------------|--------------|-----------------|
| INTERNAL AREA | 97.32 SQ.M. | 1,047.54 SQ.FT. |
| EXTERNAL AREA | 35.50 SQ.M. | 382.11 SQ.FT. |
| TOTAL AREA | 132.82 SQ.M. | 1,429.65 SQ.FT. |



GATE AVENUE



DISCLAIMER:

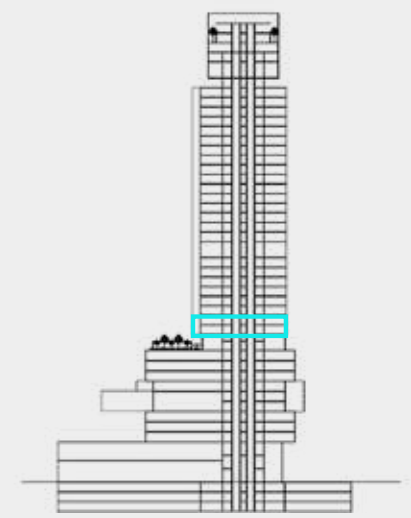
All measurements are indicative and are for marketing purposes only. All efforts have been made to ensure their accuracy, however these layouts are subject to change at the discretion of the developer and should not be relied upon as final. The actual area may vary from the stated area and the developer reserves the right to make the revisions/alterations, at its absolute discretion, without any liability whatsoever.

EXECUTIVE
1 BEDROOM C2

LEVEL 10

UNIT AREA

| | | | |
|---------------|--------------|----------|--------|
| INTERNAL AREA | 97.25 SQ.M. | 1,046.78 | SQ.FT. |
| EXTERNAL AREA | 20.19 SQ.M. | 217.32 | SQ.FT. |
| TOTAL AREA | 117.44 SQ.M. | 1,264.10 | SQ.FT. |



DISCLAIMER:

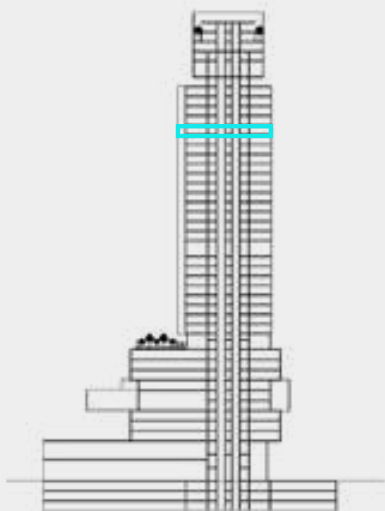
All measurements are indicative and are for marketing purposes only. All efforts have been made to ensure their accuracy, however these layouts are subject to change at the discretion of the developer and should not be relied upon as final. The actual area may vary from the stated area and the developer reserves the right to make the revisions/alterations, at its absolute discretion, without any liability whatsoever.

EXECUTIVE
1 BEDROOM D

LEVEL 30

UNIT AREA

| | | | |
|---------------|--------------|----------|--------|
| INTERNAL AREA | 100.29 SQ.M. | 1,079.51 | SQ.FT. |
| EXTERNAL AREA | 30.09 SQ.M. | 323.88 | SQ.FT. |
| TOTAL AREA | 130.38 SQ.M. | 1,403.39 | SQ.FT. |



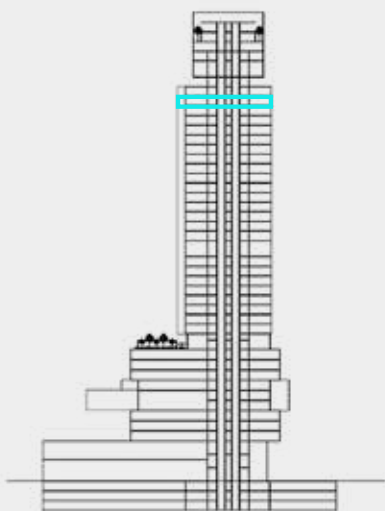
DISCLAIMER:

All measurements are indicative and are for marketing purposes only. All efforts have been made to ensure their accuracy, however these layouts are subject to change at the discretion of the developer and should not be relied upon as final. The actual area may vary from the stated area and the developer reserves the right to make the revisions/alterations, at its absolute discretion, without any liability whatsoever.

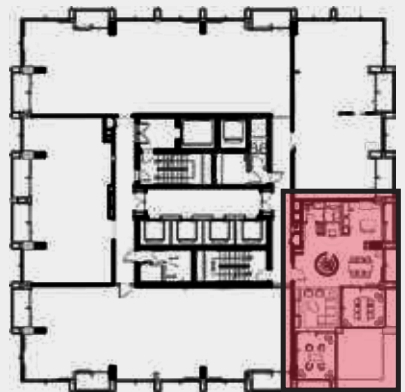
EXECUTIVE
1 BEDROOM LOFT
LOWER LEVEL
LEVEL 33

UNIT AREA

| | | | | |
|---------------|--------|-------|----------|--------|
| INTERNAL AREA | 118.53 | SQ.M. | 1,275.84 | SQ.FT. |
| EXTERNAL AREA | 42.38 | SQ.M. | 456.17 | SQ.FT. |
| TOTAL AREA | 160.91 | SQ.M. | 1,732.01 | SQ.FT. |



GATE AVENUE



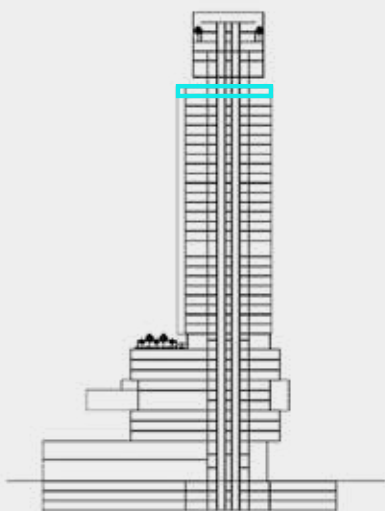
DISCLAIMER:

All measurements are indicative and are for marketing purposes only. All efforts have been made to ensure their accuracy, however these layouts are subject to change at the discretion of the developer and should not be relied upon as final. The actual area may vary from the stated area and the developer reserves the right to make the revisions/alterations, at its absolute discretion, without any liability whatsoever.

EXECUTIVE
1 BEDROOM LOFT
UPPER LEVEL
LEVEL 34

UNIT AREA

| | | |
|---------------|--------------|-----------------|
| INTERNAL AREA | 118.53 SQ.M. | 1,275.84 SQ.FT. |
| EXTERNAL AREA | 42.38 SQ.M. | 456.17 SQ.FT. |
| TOTAL AREA | 160.91 SQ.M. | 1,732.01 SQ.FT. |



GATE AVENUE



DISCLAIMER:

All measurements are indicative and are for marketing purposes only. All efforts have been made to ensure their accuracy, however these layouts are subject to change at the discretion of the developer and should not be relied upon as final. The actual area may vary from the stated area and the developer reserves the right to make the revisions/alterations, at its absolute discretion, without any liability whatsoever.

DIFC Living

FLOOR PLATES

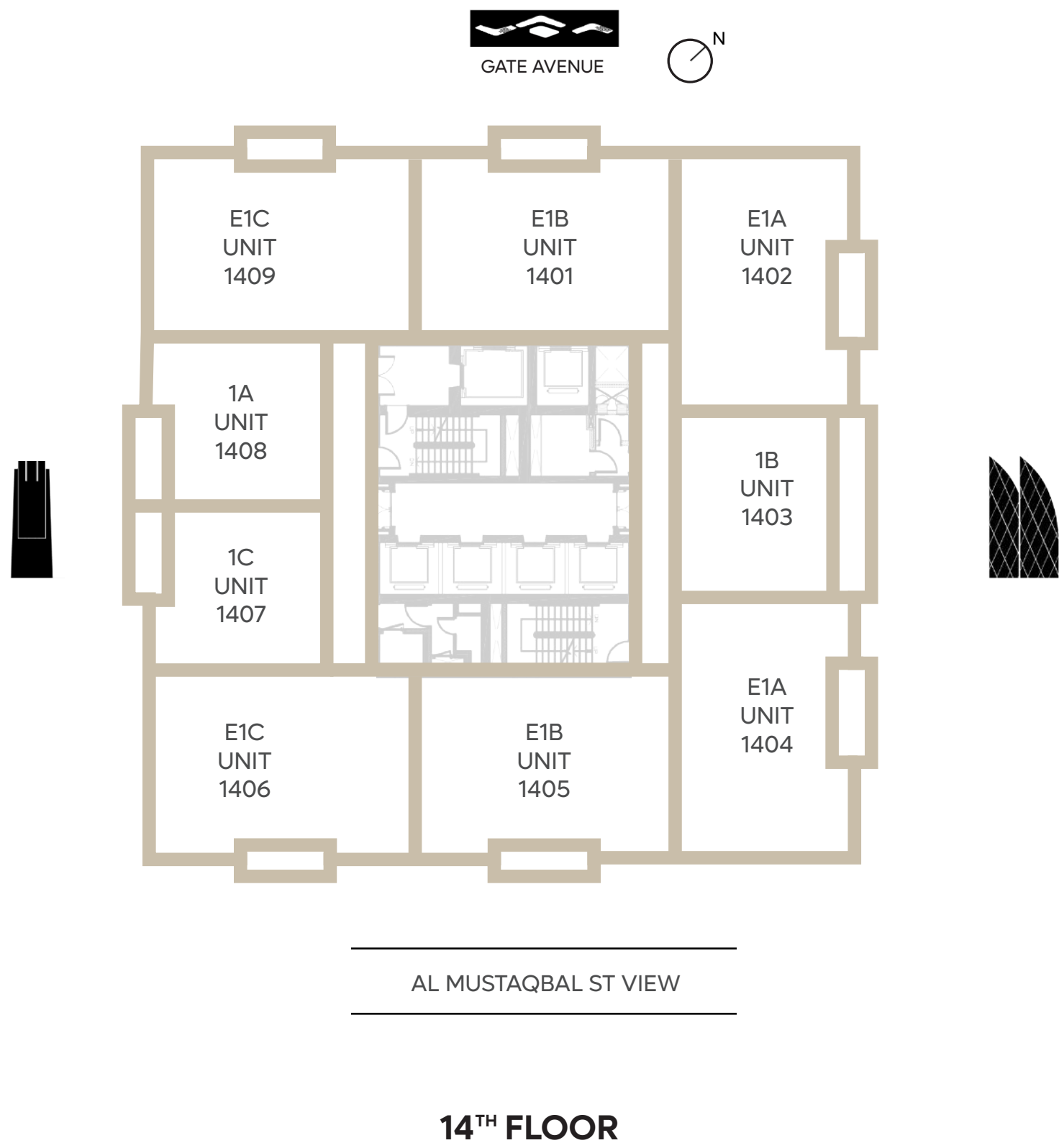
FLOOR 10 & 11



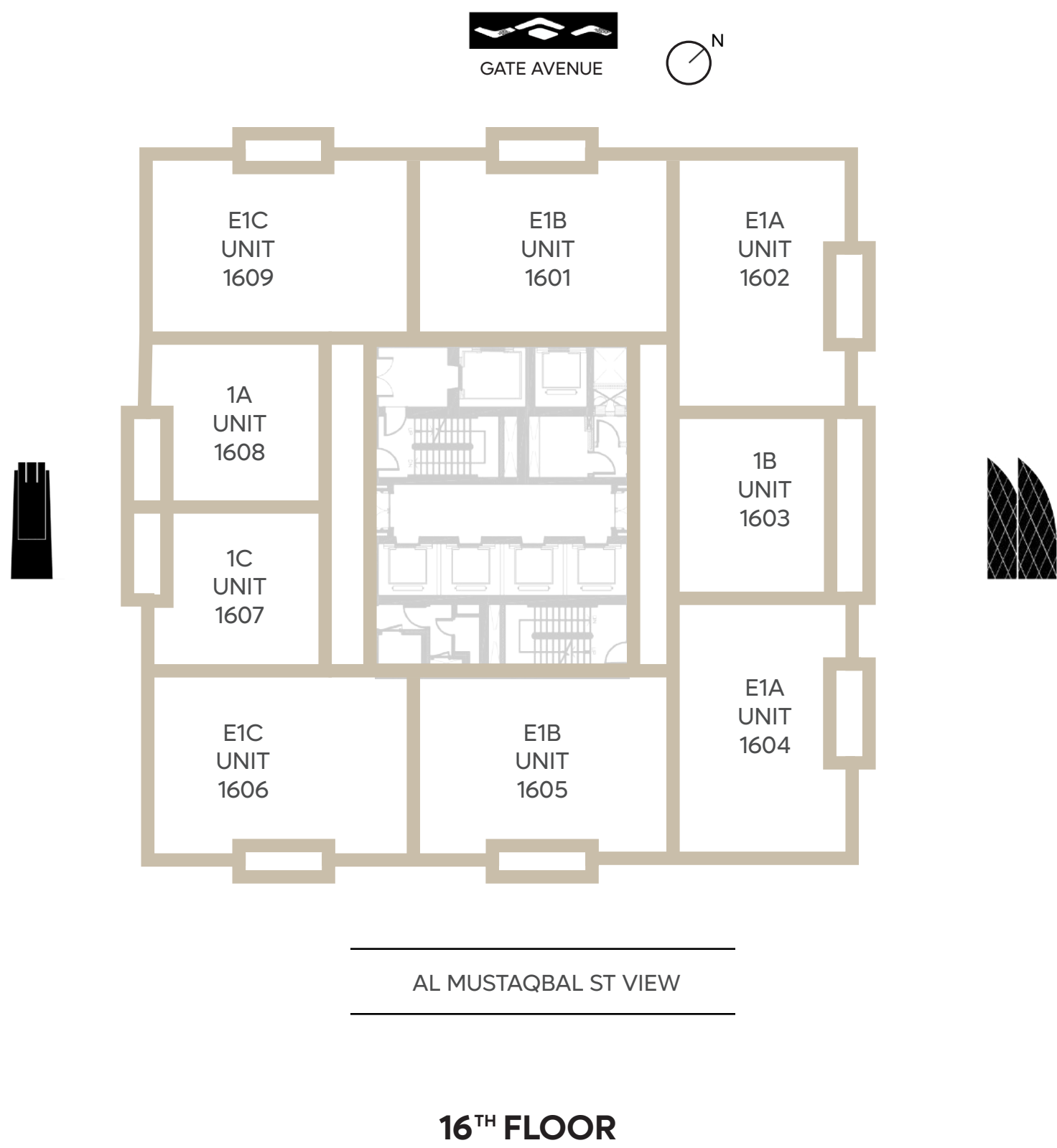
FLOOR 12 & 13



FLOOR 14 & 15



FLOOR 16 & 17



FLOOR 19 & 20



19TH FLOOR

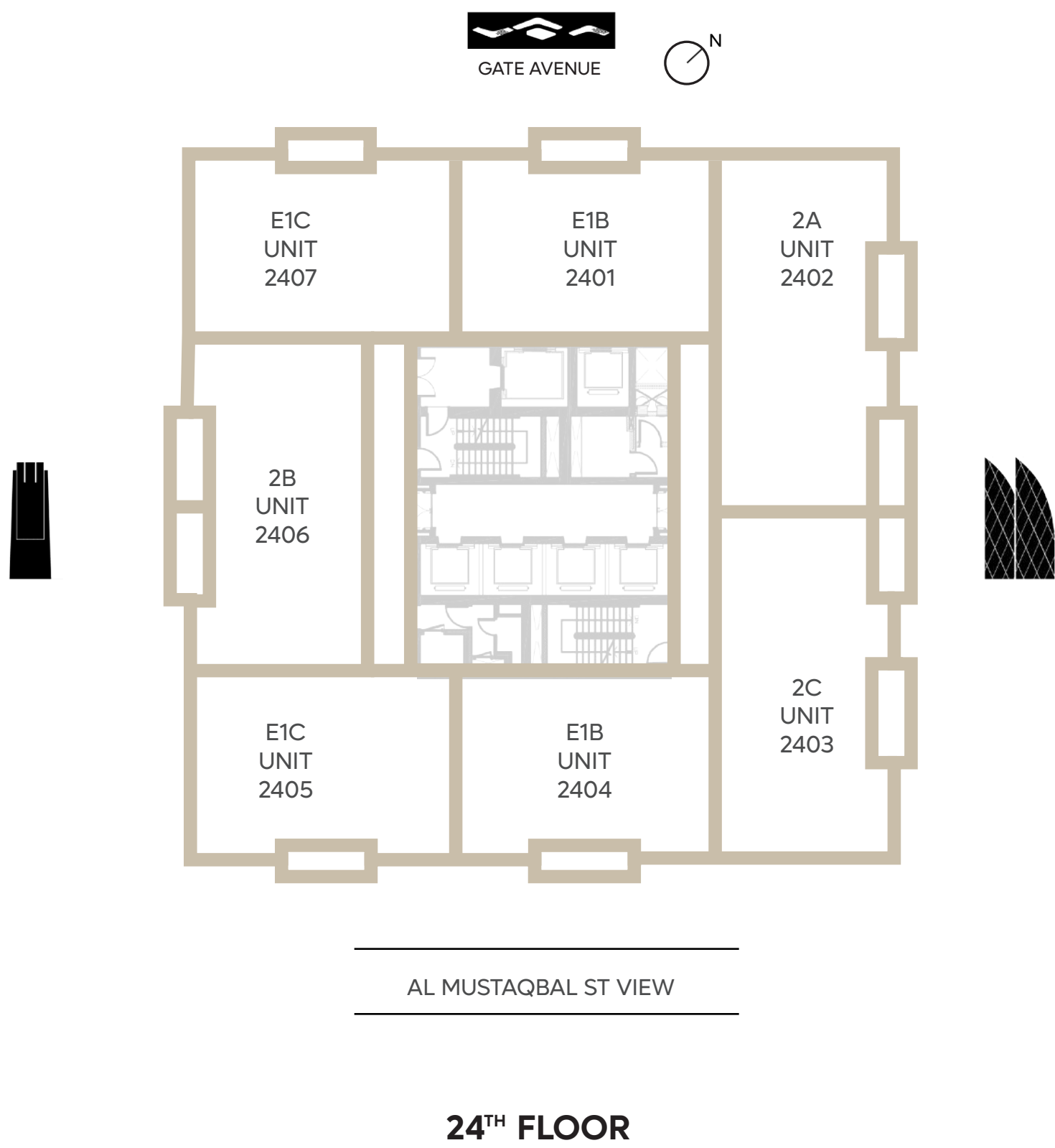
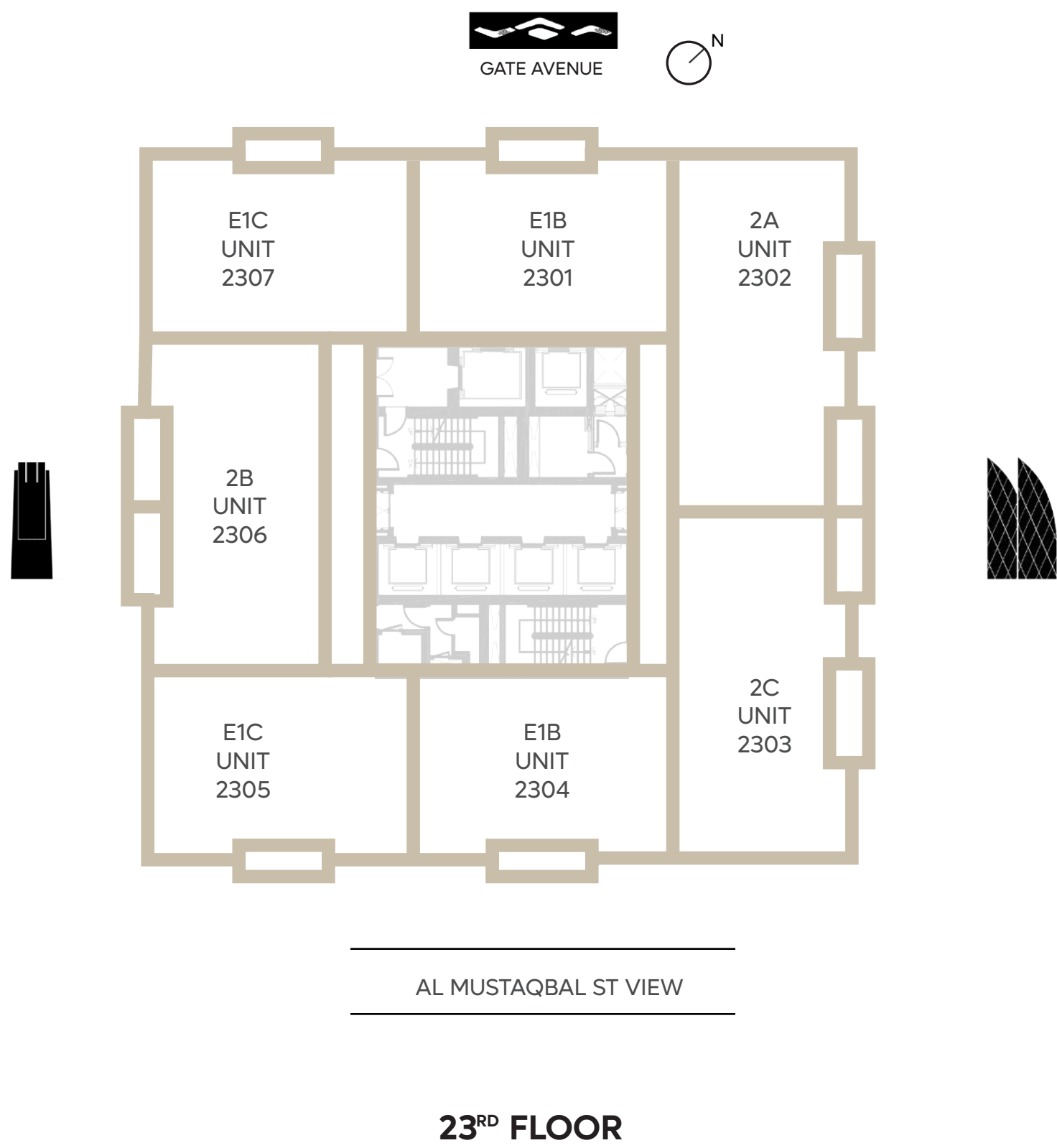


20TH FLOOR

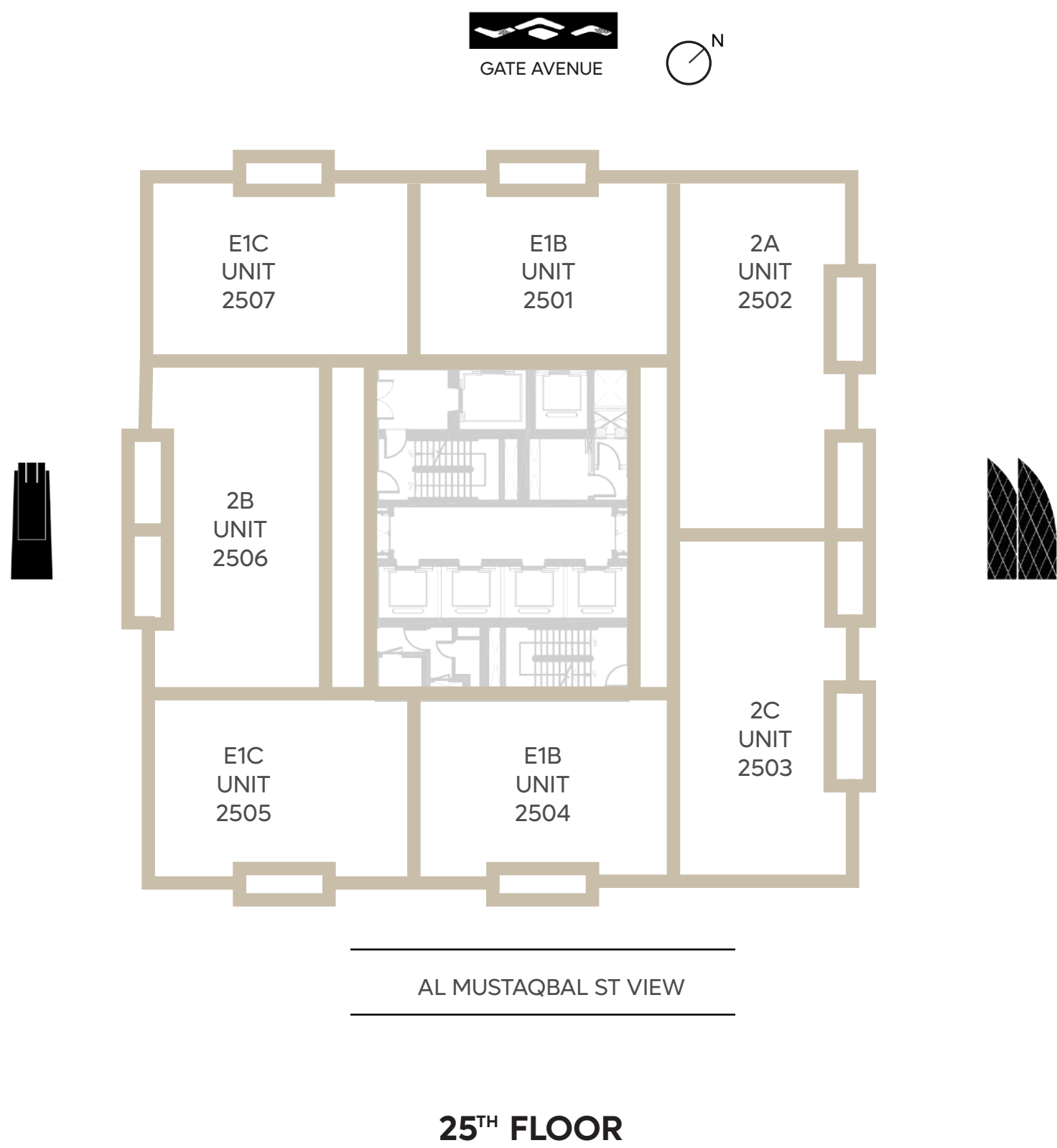
FLOOR 21 & 22



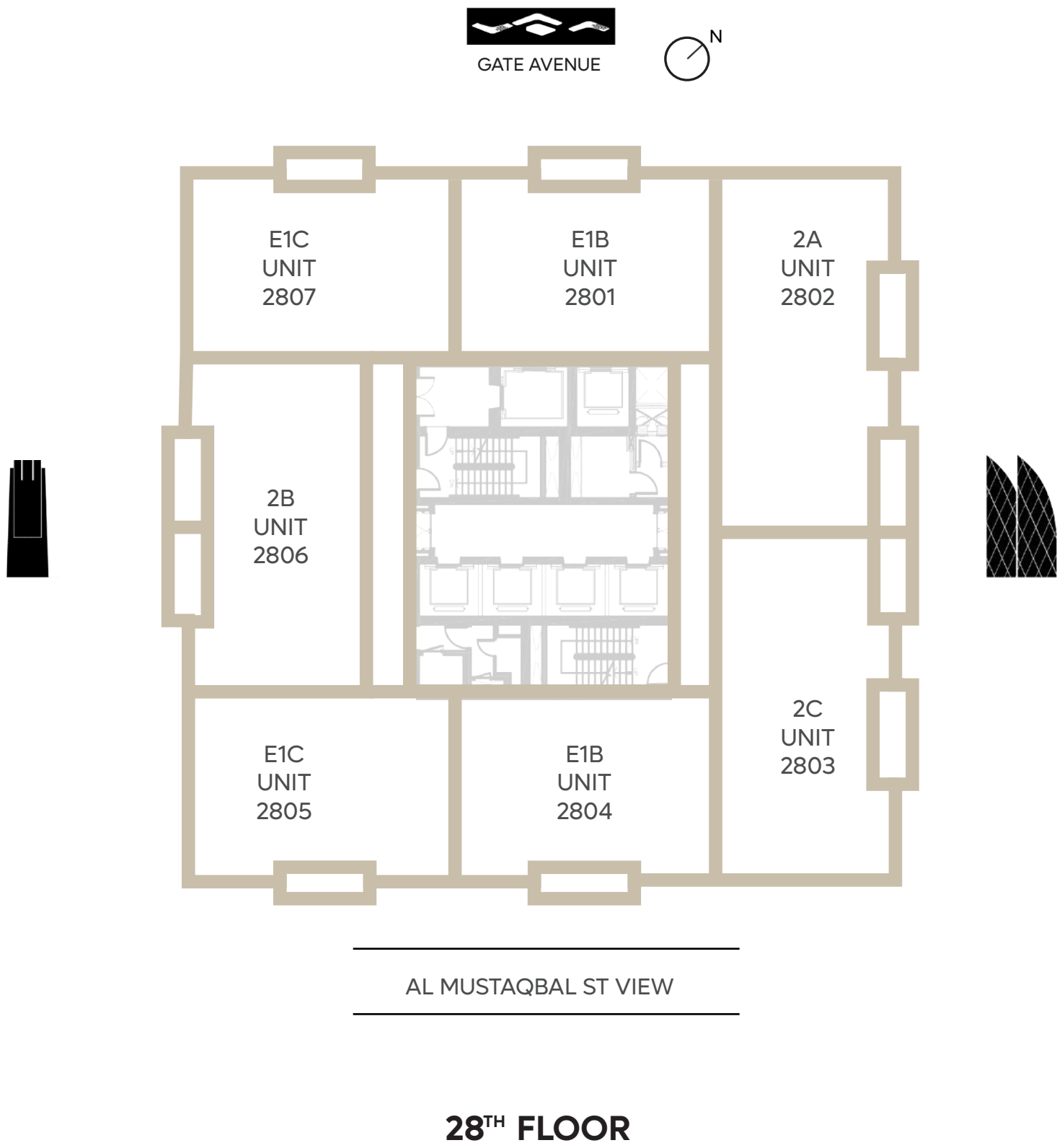
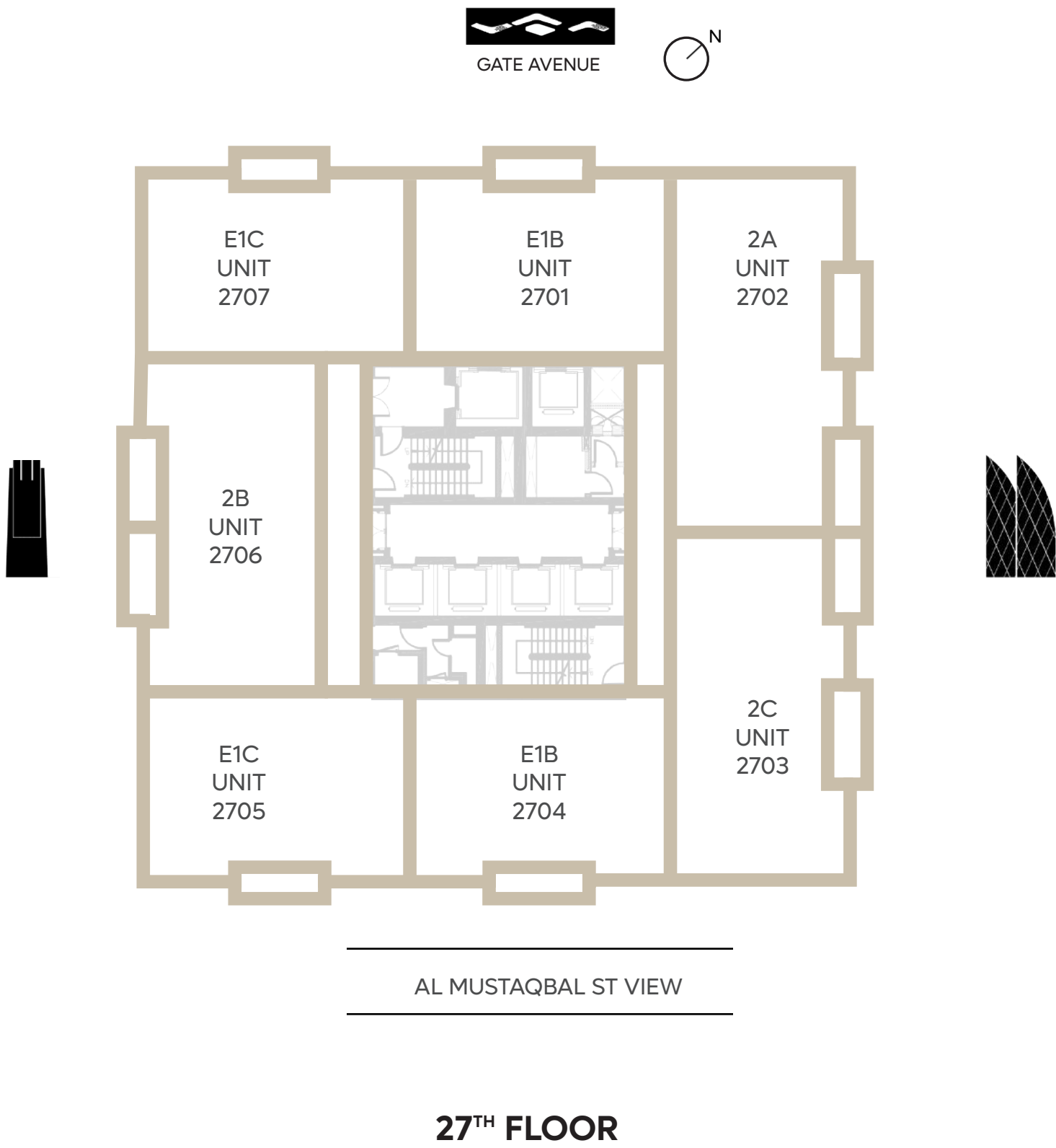
FLOOR 23 & 24



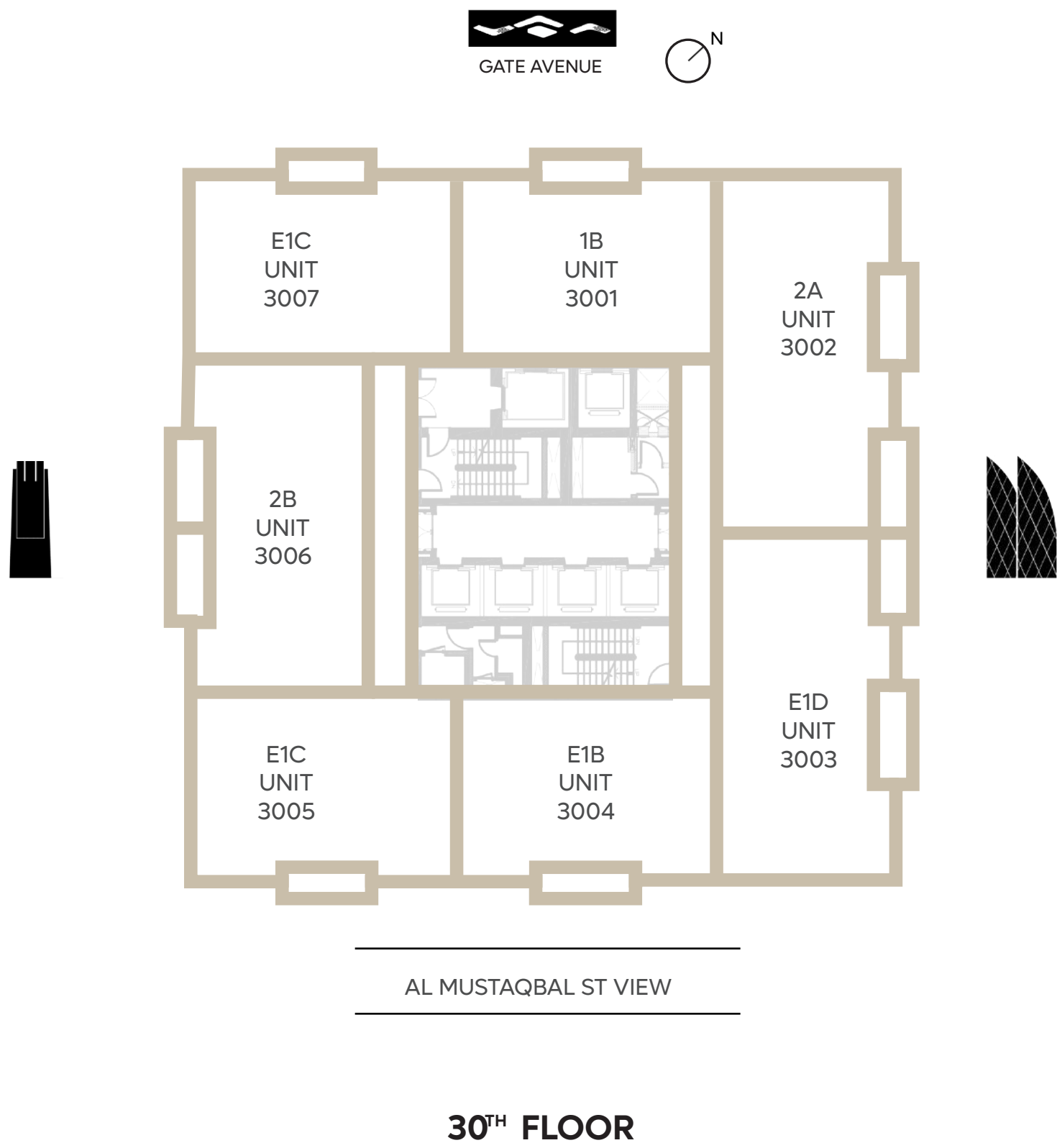
FLOOR 25 & 26



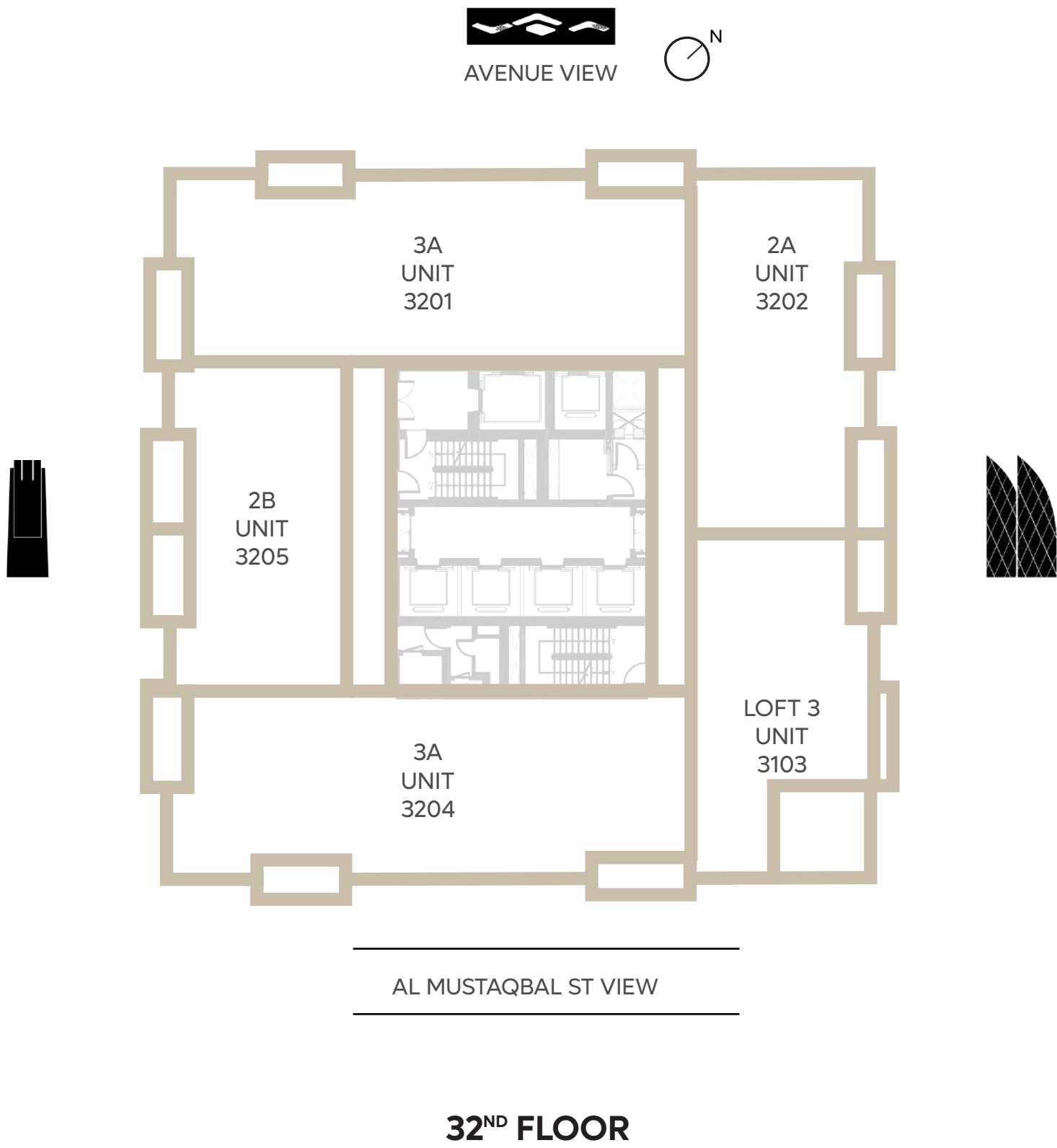
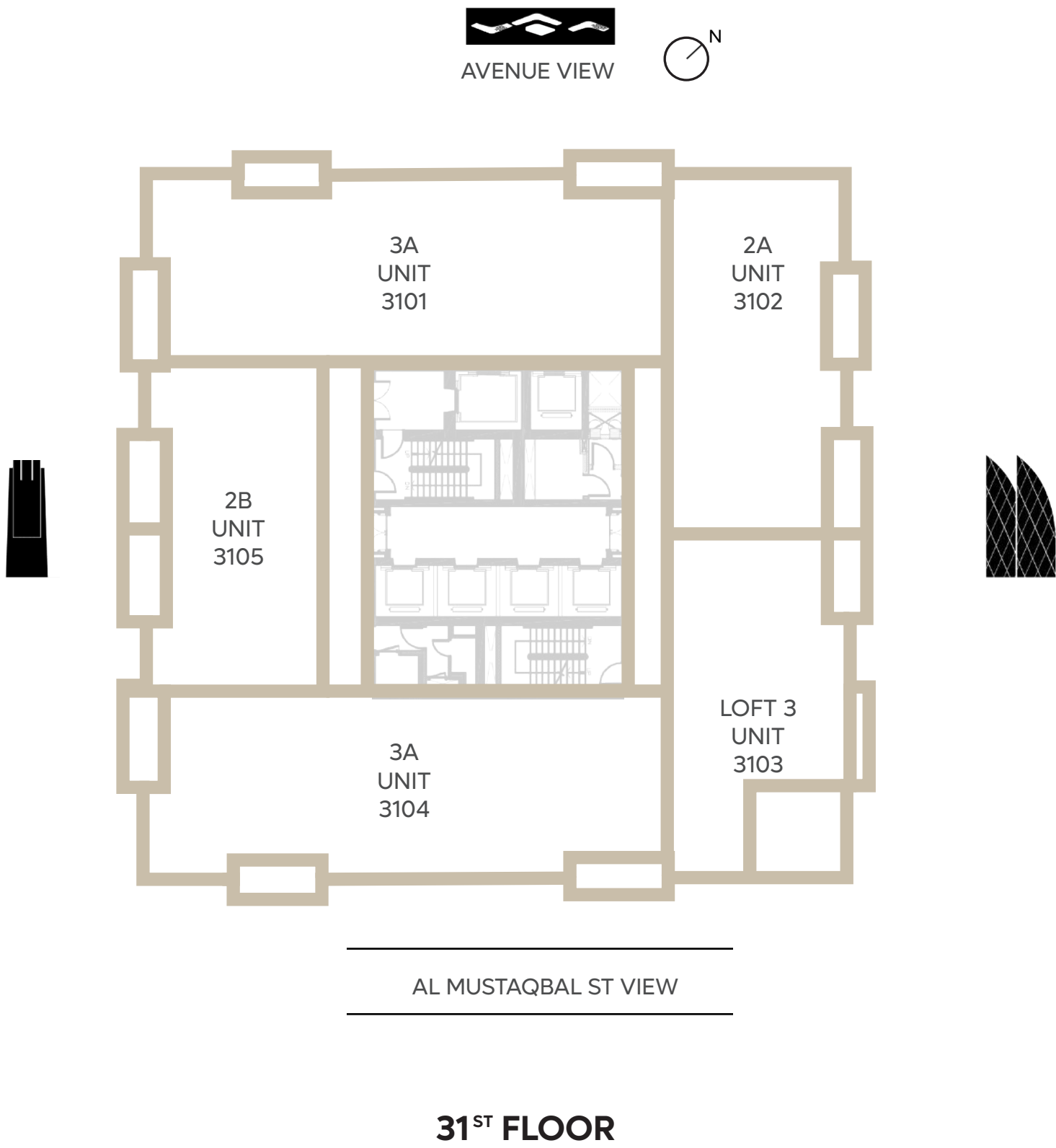
FLOOR 27 & 28



FLOOR 29 & 30



FLOOR 31 & 32



FLOOR 33 & 34

