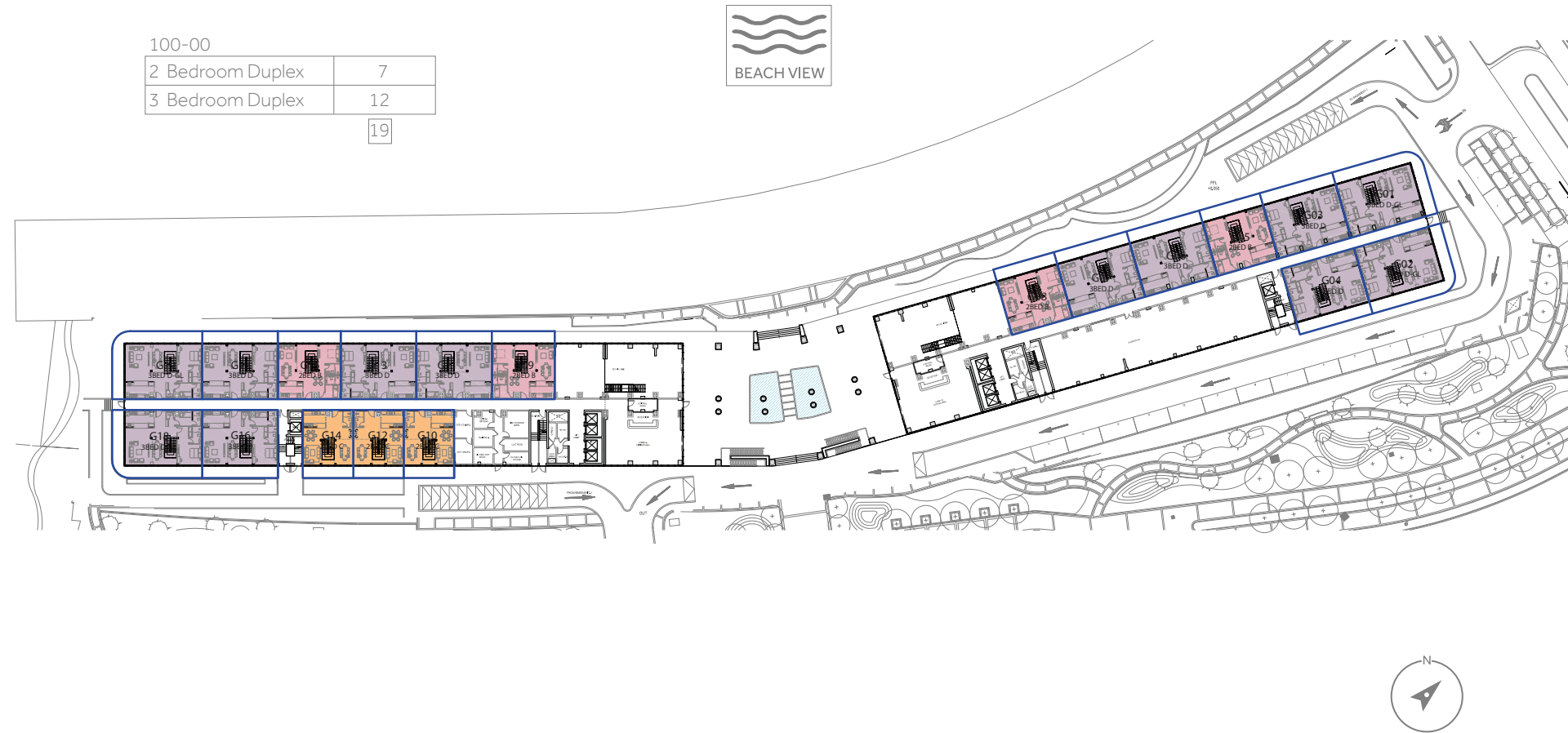
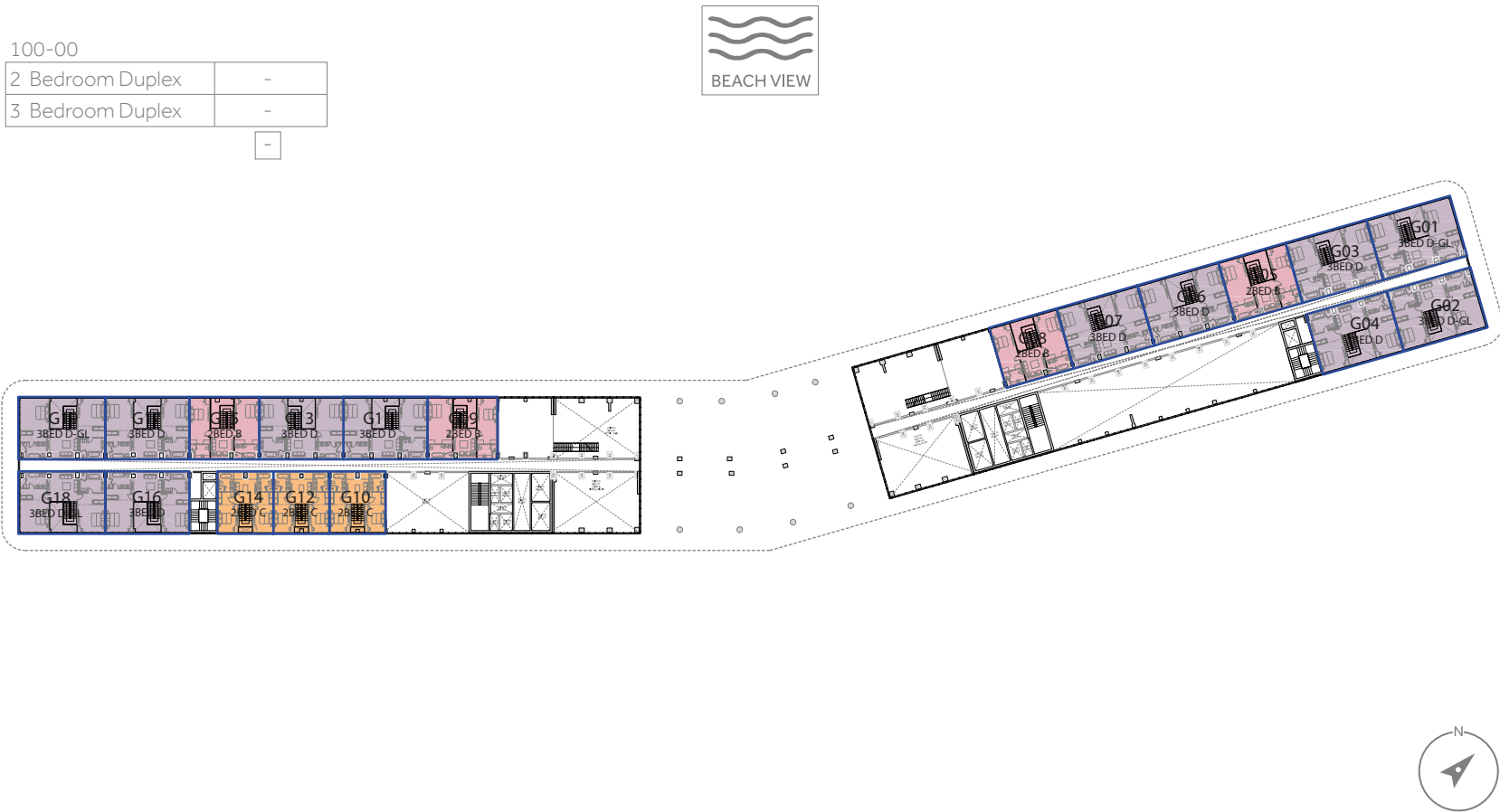


KEY PLANS

GROUND FLOOR



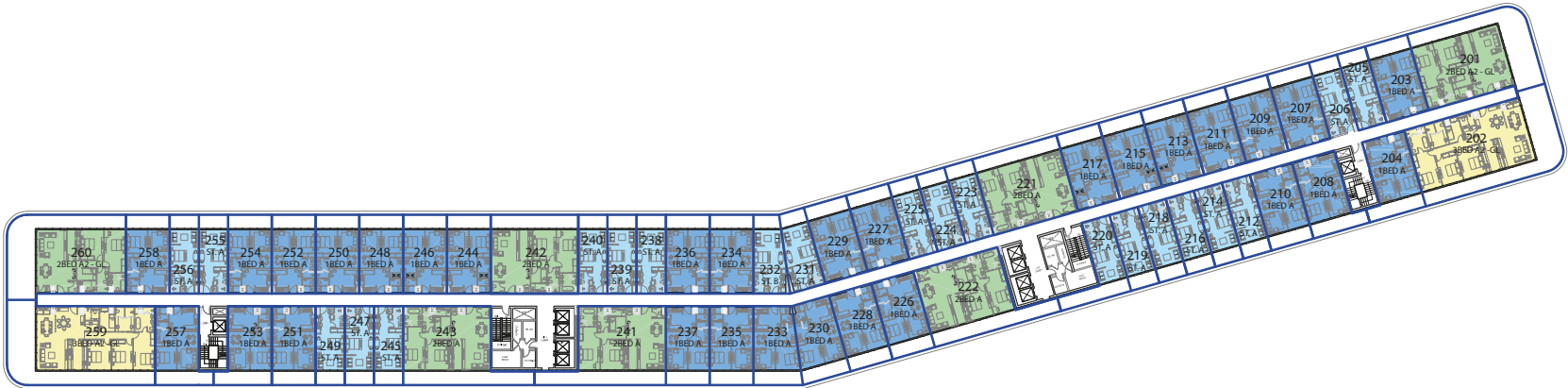
FIRST FLOOR



SECOND FLOOR

102-00	
1 Bedroom	30
2 Bedroom	7
Studio	21
3 Bedroom	2

60

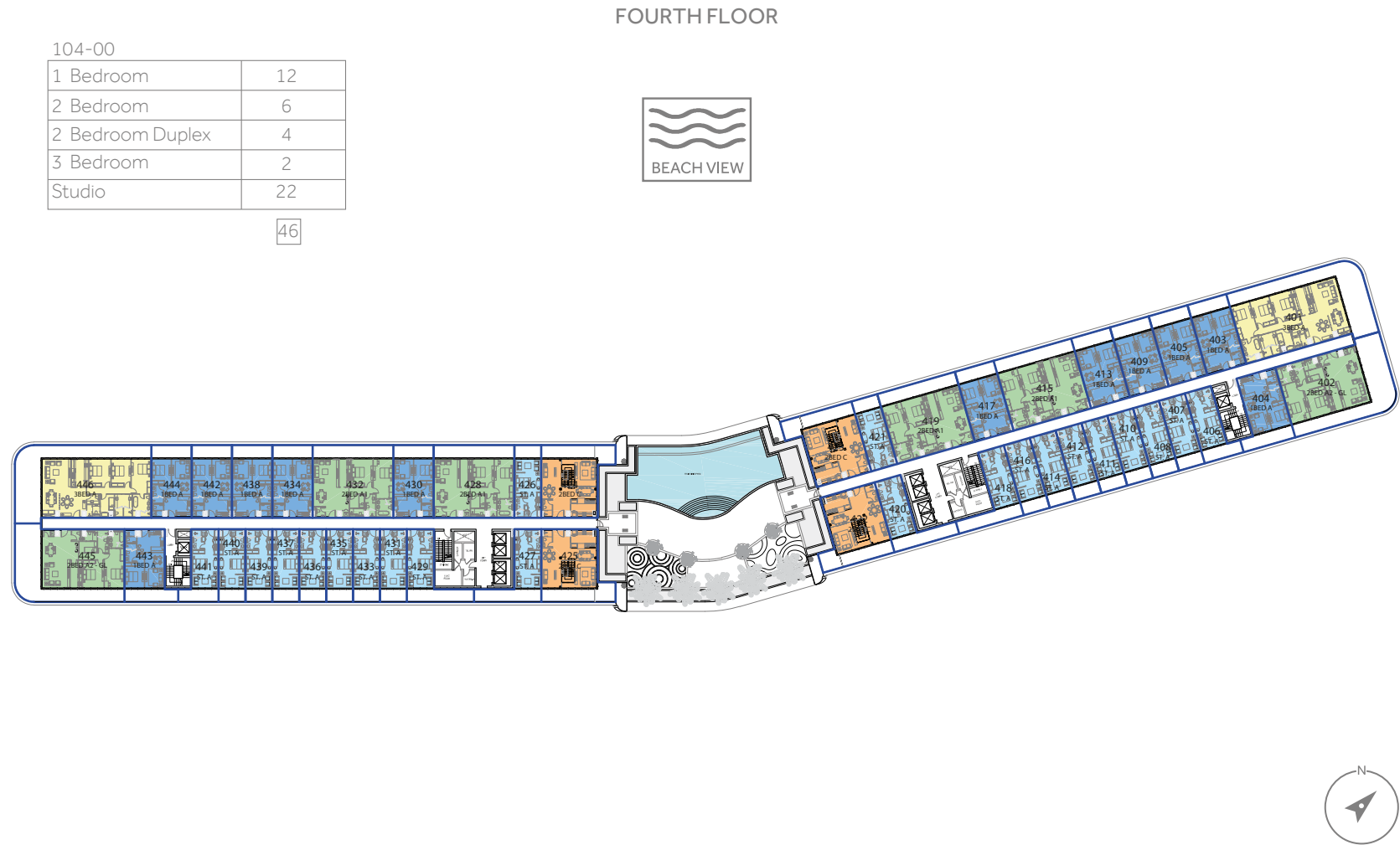


THIRD FLOOR

103-00	
1 Bedroom	16
2 Bedroom	12
Studio	16

44






106-00

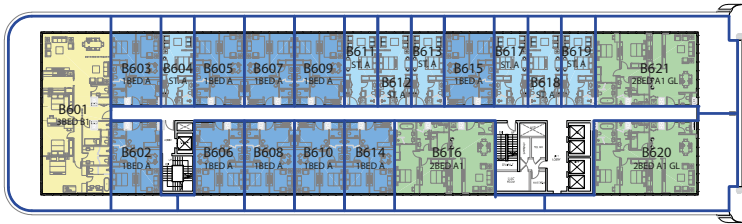
1 Bedroom	20
2 Bedroom	6
3 Bedroom	2
Studio	14

42

SIXTH FLOOR



BEACH VIEW






107-00

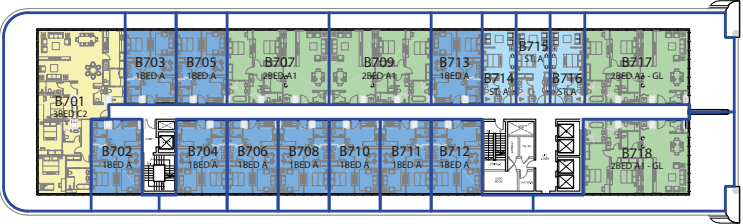
1 Bedroom	20
2 Bedroom	7
3 Bedroom	2
Studio	9

38

SEVENTH FLOOR



BEACH VIEW

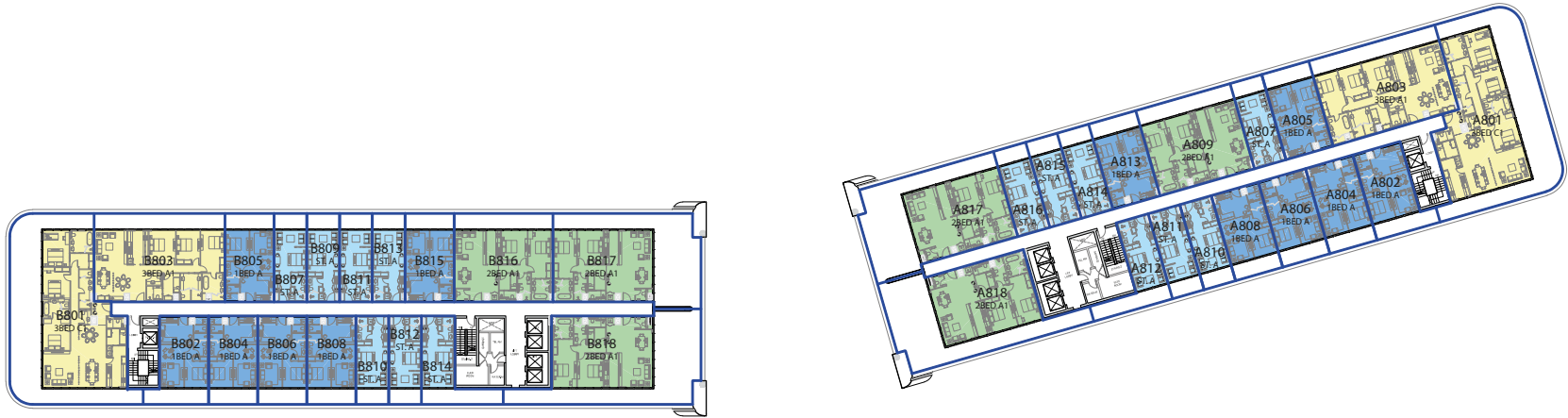




108-00	
1 Bedroom	12
2 Bedroom	6
3 Bedroom	4
Studio	14

36

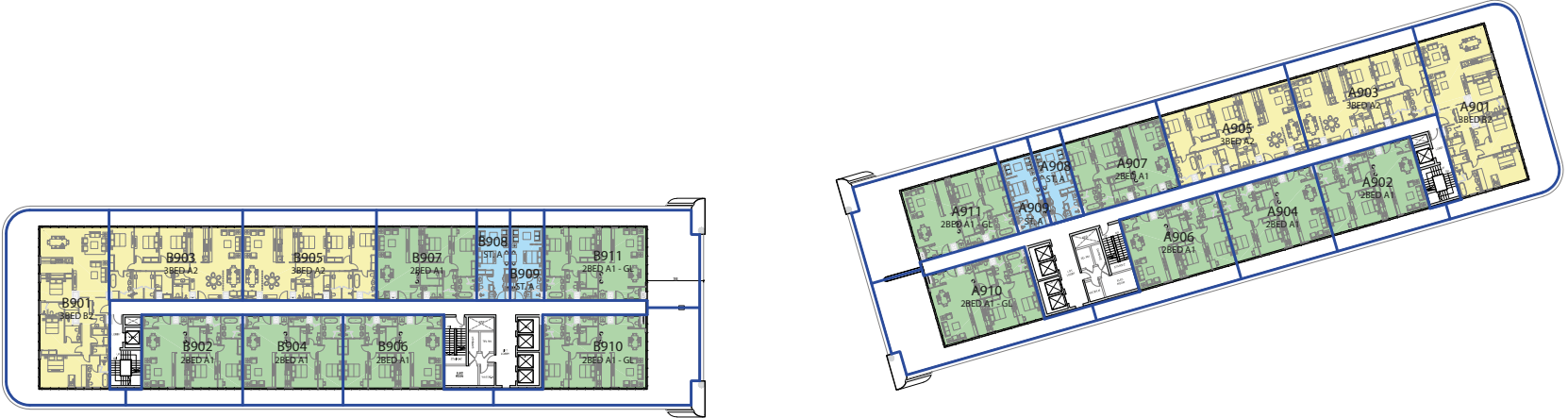
EIGHTH FLOOR



109-00	
2 Bedroom	12
3 Bedroom	6
Studio	4

22

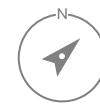
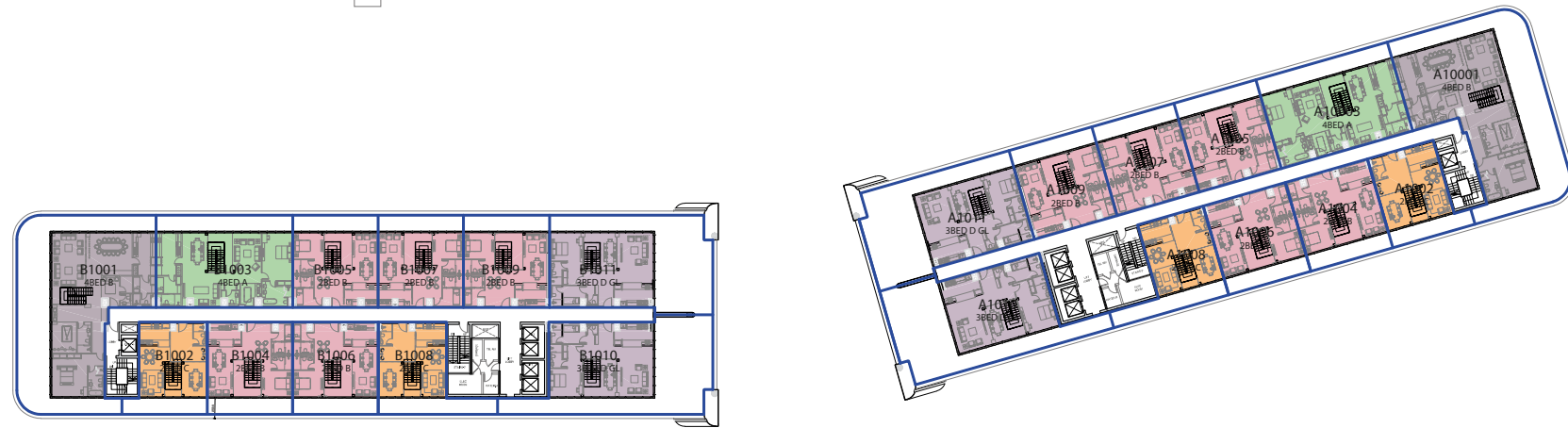
NINTH FLOOR



TENTH FLOOR

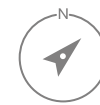
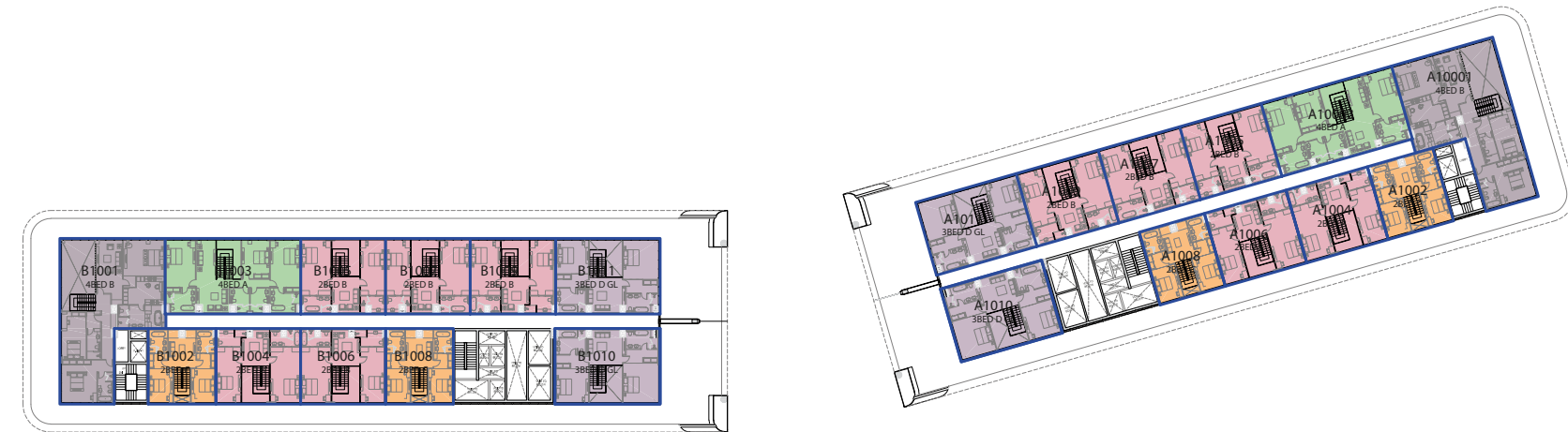
110-00	
2 Bedroom Duplex	10
2 Bedroom Duplex type 2	4
3 Bedroom Duplex	4
4 Bedroom Duplex	4

22



ELEVENTH FLOOR

2 Bedroom Duplex	-
2 Bedroom Duplex type 2	-
3 Bedroom Duplex	-
4 Bedroom Duplex	-



APARTMENT TYPE

STUDIO A

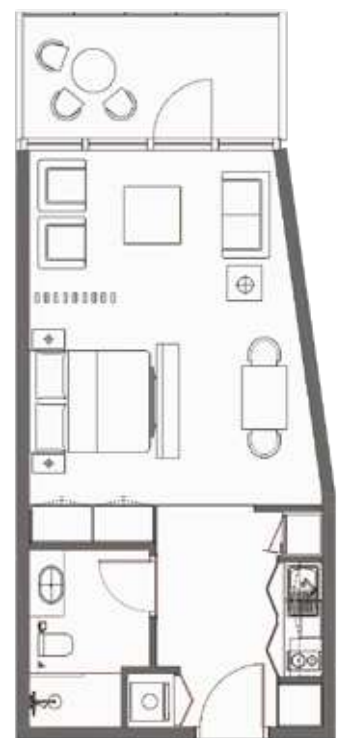


Gross Floor Area:

Suite Area		36 sqm		388 sqft
Balcony Area		8 sqm		86 sqft
Total Area		44 sqm		474 sqft

APARTMENT TYPE

STUDIO B



Gross Floor Area:

Suite Area		40 sqm		431 sqft
Balcony Area		9 sqm		97 sqft
Total Area		49 sqm		527 sqft

APARTMENT TYPE

ONE BEDROOM A



Gross Floor Area:

Suite Area		57 sqm		614 sqft
Balcony Area		12 sqm		129 sqft
Total Area		69 sqm		743 sqft

APARTMENT TYPE

ONE BEDROOM B



Gross Floor Area:

Suite Area		56 sqm		603 sqft
Balcony Area		14 sqm		151 sqft
Total Area		70 sqm		753 sqft

APARTMENT TYPE

TWO BEDROOM A1



Gross Floor Area:

Suite Area		113 sqm		1,216 sqft
Balcony Area		25 sqm		269 sqft
Total Area		138 sqm		1,485 sqft

APARTMENT TYPE

TWO BEDROOM A1-GL



Gross Floor Area:

Suite Area		123 sqm		1,324 sqft
Balcony Area		72 sqm		775 sqft
Total Area		195 sqm		2,099 sqft

APARTMENT TYPE

THREE BEDROOM A

Gross Floor Area:

Suite Area		153 sqm		1,647 sqft
Balcony Area		34 sqm		366 sqft
Total Area		187 sqm		2,013 sqft



APARTMENT TYPE

THREE BEDROOM A-GL

Gross Floor Area:

Suite Area		162 sqm		1,744 sqft
Balcony Area		79 sqm		850 sqft
Total Area		241 sqm		2,594 sqft



APARTMENT TYPE

THREE BEDROOM

Gross Floor Area:

Suite Area		187 sqm		2,013 sqft
Balcony Area		21 sqm		226 sqft
Total Area		208 sqm		2,239 sqft



APARTMENT TYPE

THREE BEDROOM C



Gross Floor Area:

Suite Area		187 sqm		2,013 sqft
Balcony Area		134 sqm		1,442 sqft
Total Area		321 sqm		3,455 sqft

APARTMENT TYPE

TWO BEDROOM B DUPLEX



Gross Floor Area:

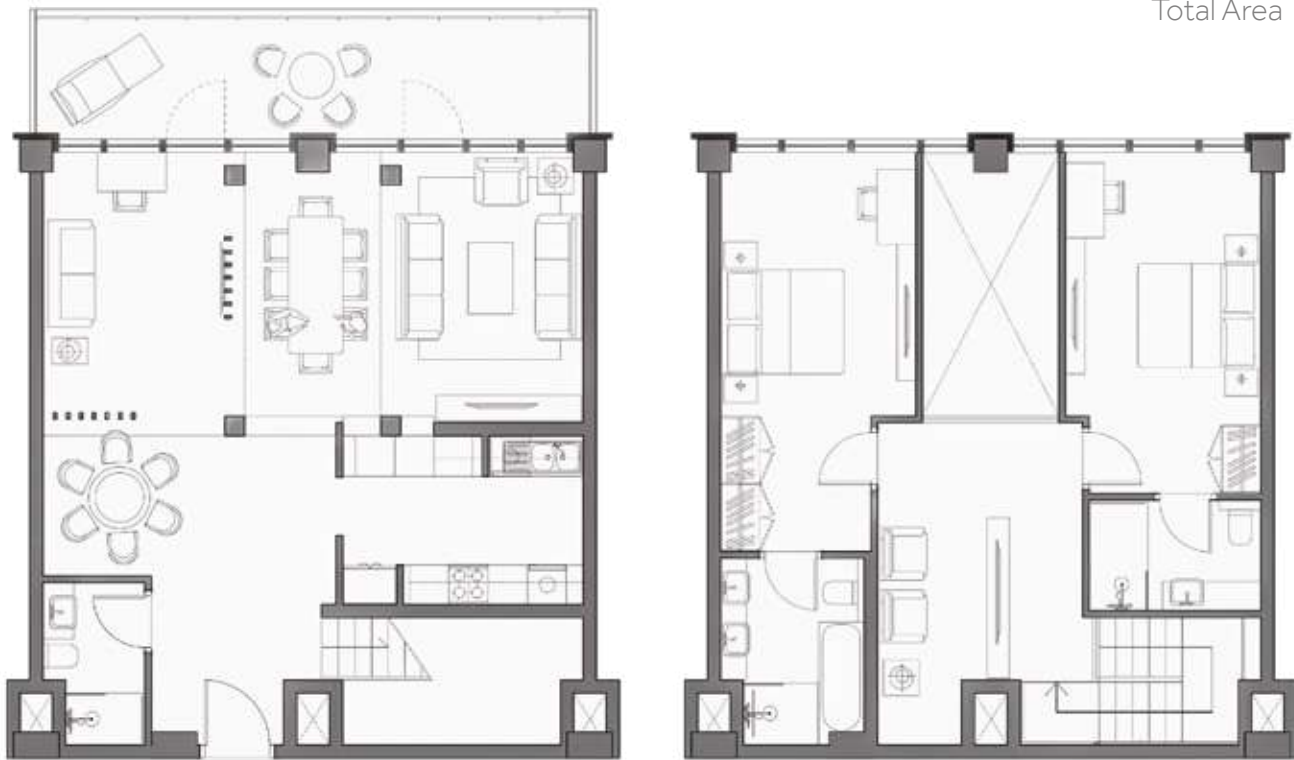
Suite Area		187 sqm		2,013 sqft
Balcony Area		21 sqm		226 sqft
Total Area		208 sqm		2,239 sqft

APARTMENT TYPE

TWO BEDROOM C DUPLEX

Gross Floor Area:

Suite Area		151 sqm		1,625 sqft
Balcony Area		17 sqm		183 sqft
Total Area		168 sqm		1,808sqft

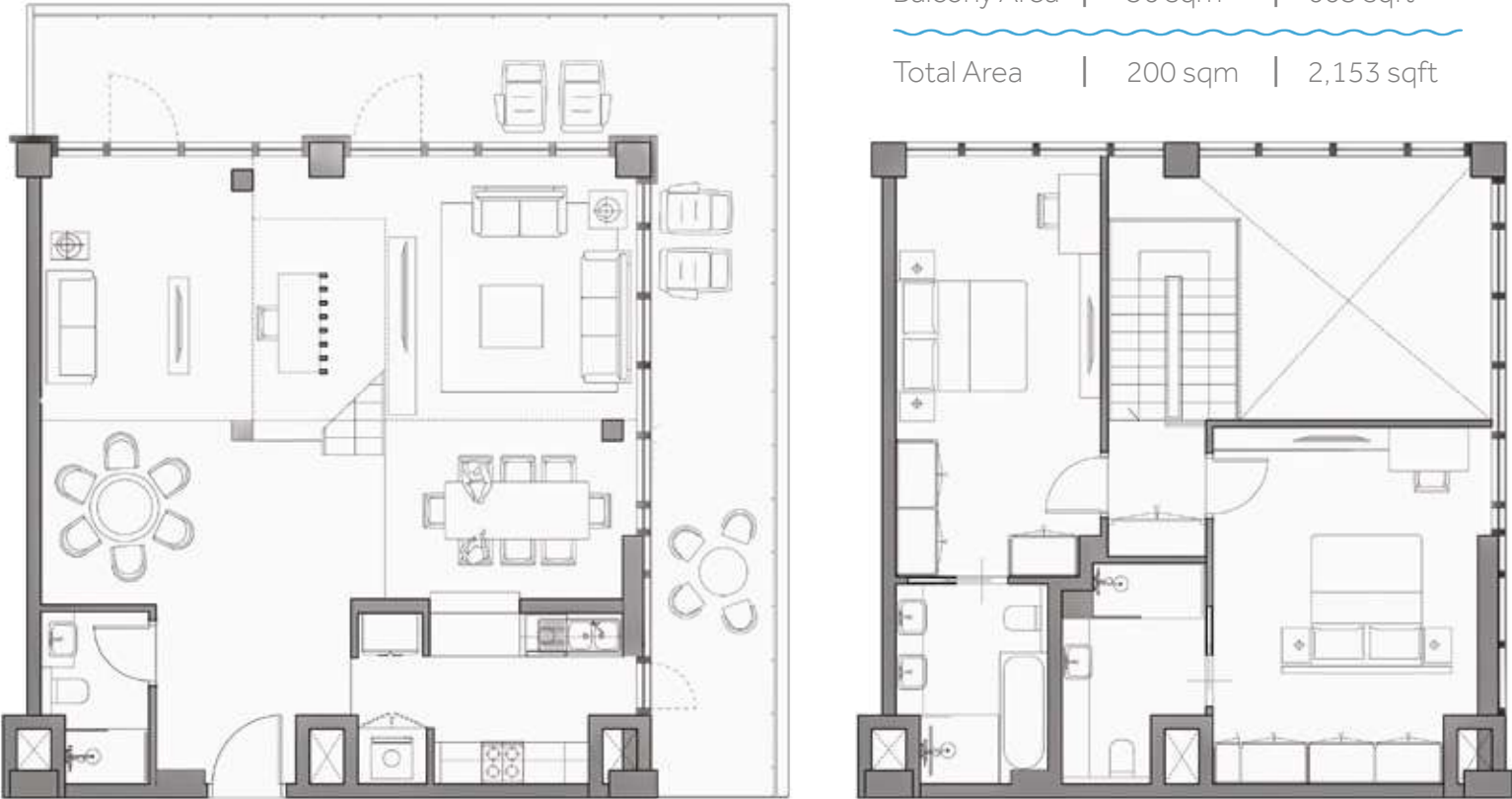


APARTMENT TYPE

TWO BEDROOM C-GL DUPLEX

Gross Floor Area:

Suite Area		144 sqm		1,550 sqft
Balcony Area		56 sqm		603 sqft
Total Area		200 sqm		2,153 sqft



APARTMENT TYPE

THREE BEDROOM D DUPLEX

Gross Floor Area:

Suite Area		228 sqm		2,454 sqft
Balcony Area		25 sqm		269 sqft
Total Area		253 sqm		2,723 sqft



APARTMENT TYPE

THREE BEDROOM D-GL DUPLEX

Gross Floor Area:

Suite Area		234 sqm		2,519 sqft
Balcony Area		49 sqm		527 sqft
Total Area		283 sqm		3,046 sqft



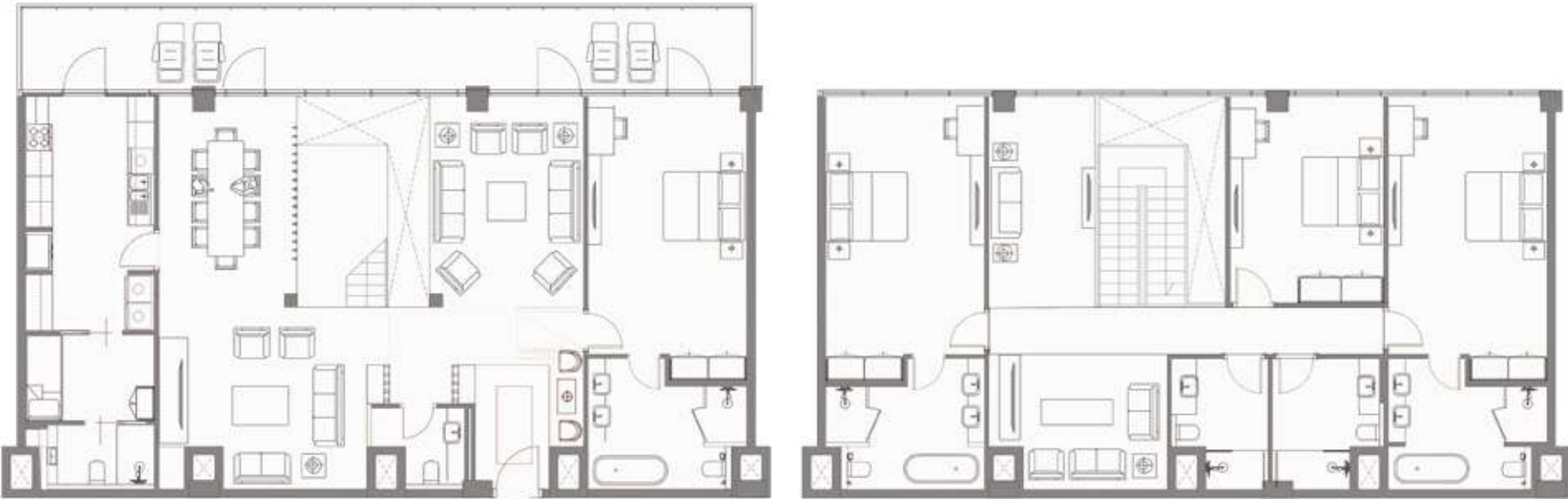
APARTMENT TYPE

FOUR BEDROOM A DUPLEX

LEVEL 01 & LEVEL 02

Gross Floor Area:

Suite Area		305 sqm		3,283 sqft
Balcony Area		34 sqm		366 sqft
Total Area		339 sqm		3,649 sqft



APARTMENT TYPE

FOUR BEDROOM B DUPLEX

LEVEL 01 & LEVEL 02

Gross Floor Area:

Suite Area		371 sqm		3,993 sqft
Balcony Area		180 sqm		1,938 sqft
Total Area		551 sqm		5,931 sqft

