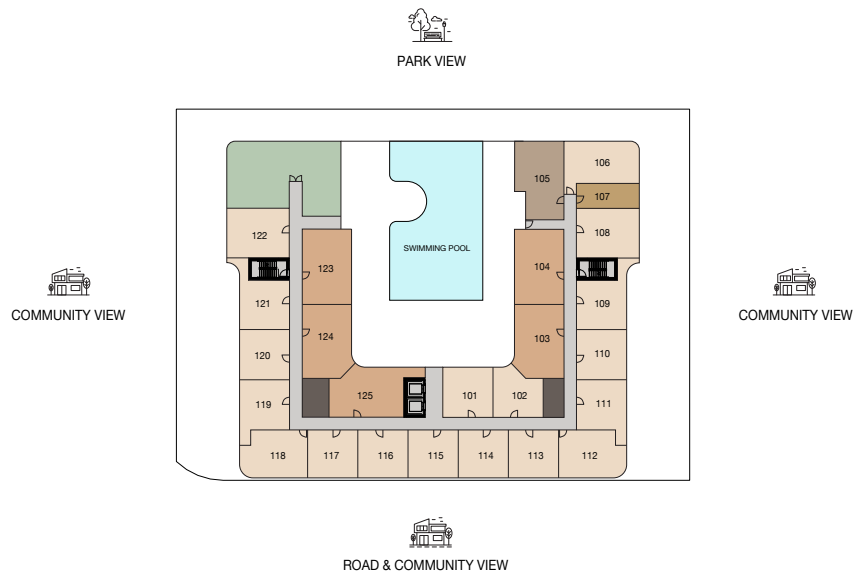
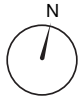
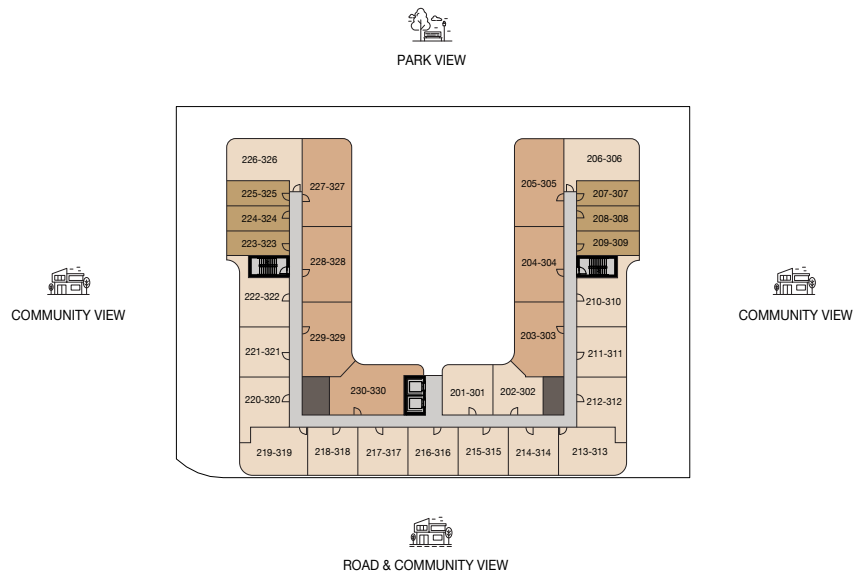


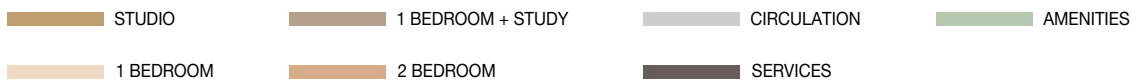
FLOOR PLANS



LEVEL 01



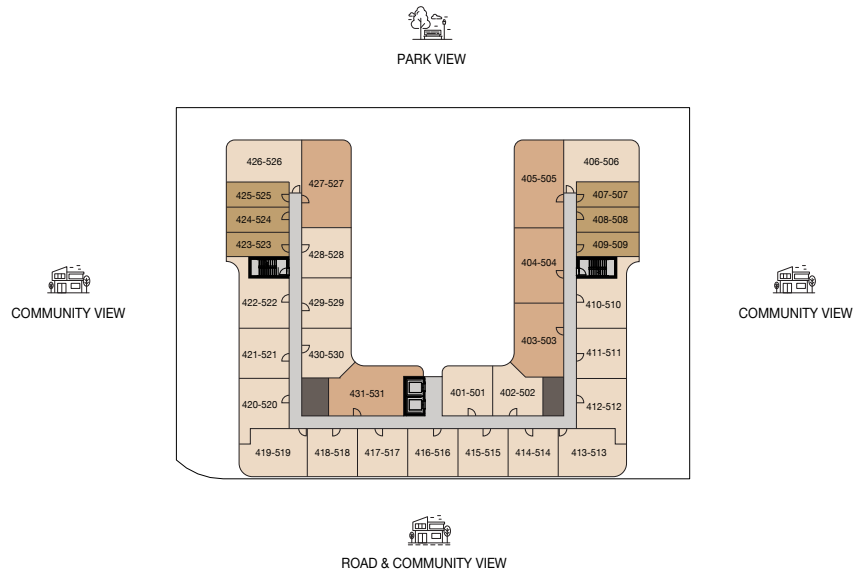
TYPICAL LEVEL 02 & 03



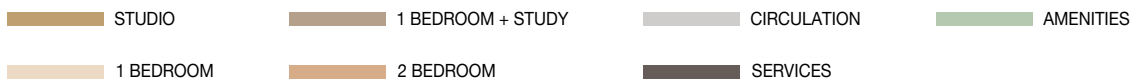
SAMANA
HILLS
SOUTH 3

Disclaimer: 1. All Areas have been provided by our consultant architects. 2. Actual suite area may vary from the stated area. Drawings not to scale. The developer reserves the right to make revisions. 3. Calculation of suite area is measured as the area bounded by the centre line of demising or partition walls separating one unit from another unit, the exterior face of all exterior walls, and the exterior face of the corridor wall enclosing the adjoining unit. 4. Calculation of balcony area is measured as the area bounded by the centre line of demising or partition walls separating one unit from another unit, the outmost face of the enclosing guard and the external face of the adjoining balcony. 5. The units are measured at typical floor in the building. Columns may vary in size depending on the floor level. 6. For each unit type, unit sizes and details might be slightly different. Please refer to the sales and purchase agreement for the actual size of each specific unit. 7. North direction as per key plan.

FLOOR PLANS



TYPICAL LEVEL 04 & 05

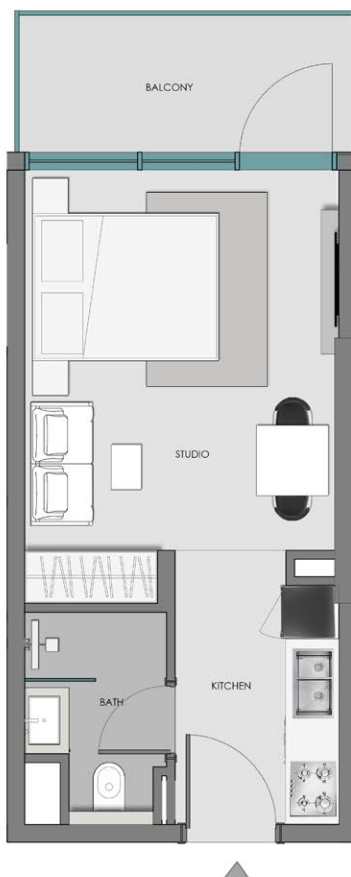


SAMANA
HILLS
SOUTH 3

Disclaimer: 1. All Areas have been provided by our consultant architects. 2. Actual suite area may vary from the stated area. Drawings not to scale. The developer reserves the right to make revisions. 3. Calculation of suite area is measured as the area bounded by the centre line of demising or partition walls separating one unit from another unit, the exterior face of all exterior walls, and the exterior face of the corridor wall enclosing the adjoining unit. 4. Calculation of balcony area is measured as the area bounded by the centre line of demising or partition walls separating one unit from another unit, the outmost face of the enclosing guard and the external face of the adjoining balcony. 5. The units are measured at typical floor in the building. Columns may vary in size depending on the floor level. 6. For each unit type, unit sizes and details might be slightly different. Please refer to the sales and purchase agreement for the actual size of each specific unit. 7. North direction as per key plan.

STUDIO

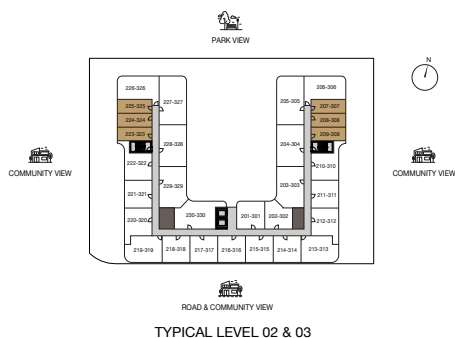
AVERAGE AREA - 367.26 SQ.FT. - 374.15 SQ.FT.



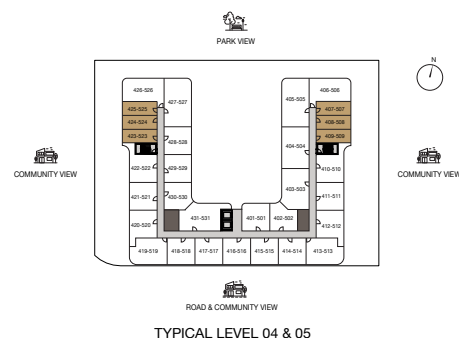
UNIT



UNITS - 107



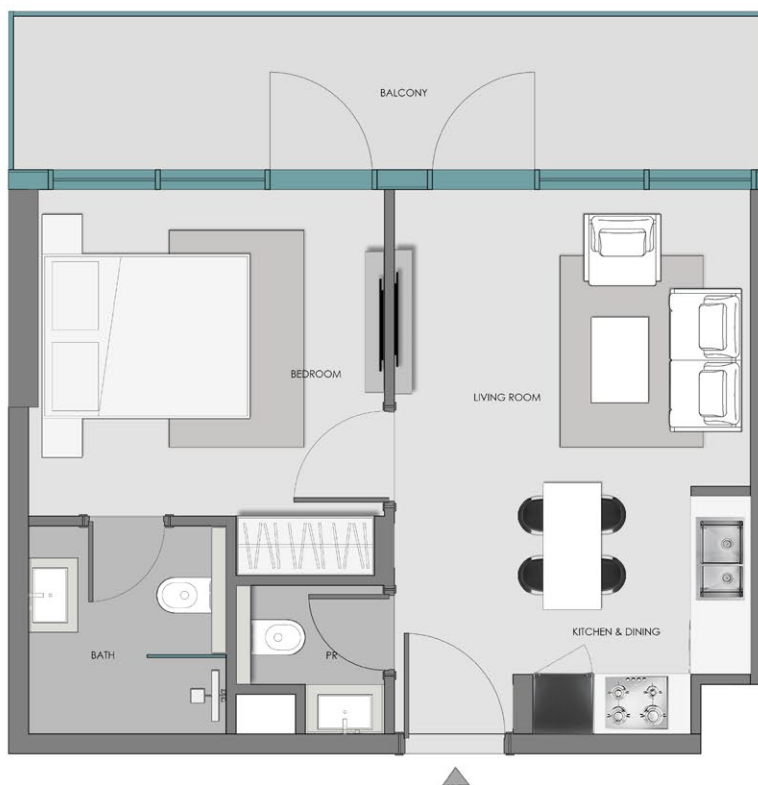
UNITS - 207-307, 208-308, 209-309,
223-323, 224-324, 225-325



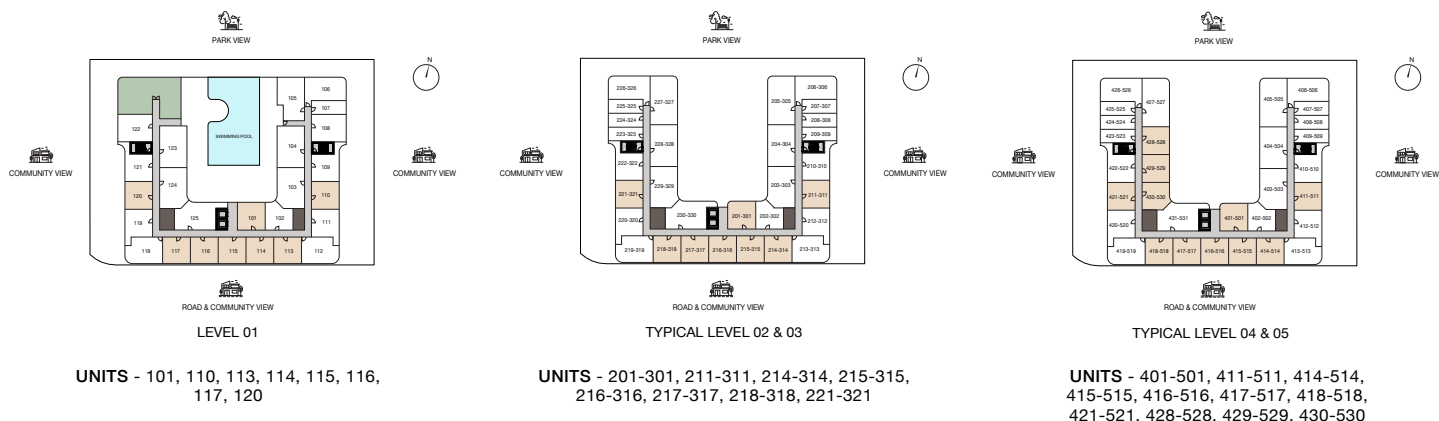
UNITS - 407-507, 408-508, 409-509,
423-523, 424-524, 425-525

1 BEDROOM - TYPE 1

AVERAGE AREA - 570.49 SQ.FT- 589.65 SQ.FT



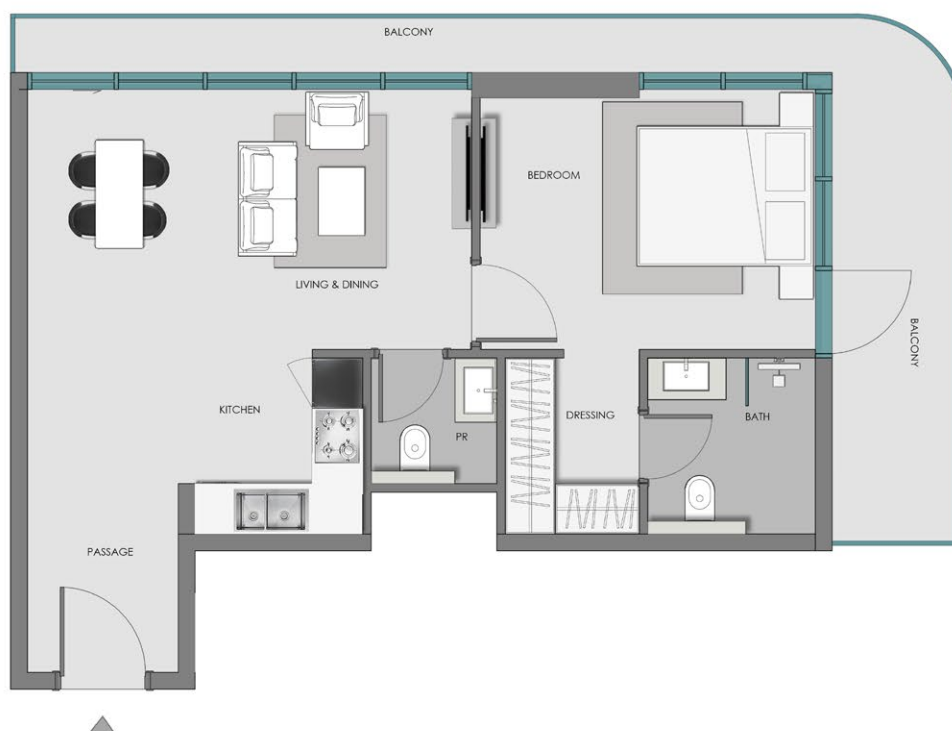
UNIT



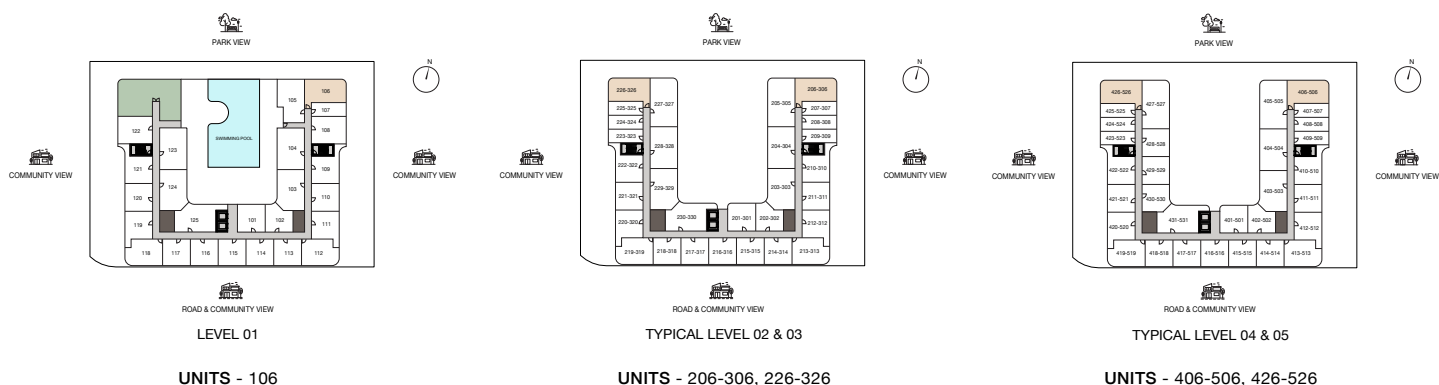
Disclaimer: 1. All Areas have been provided by our consultant architects. 2. Actual suite area may vary from the stated area. Drawings not to scale. The developer reserves the right to make revisions. 3. Calculation of suite area is measured as the area bounded by the centre line of demising or partition walls separating one unit from another unit, the exterior face of all exterior walls, and the exterior face of the corridor wall enclosing the adjoining unit. 4. Calculation of balcony area is measured as the area bounded by the centre line of demising or partition walls separating one unit from another unit, the outmost face of the enclosing guard and the external face of the adjoining balcony. 5. The units are measured at typical floor in the building. Columns may vary in size depending on the floor level. 6. For each unit type, unit sizes and details might be slightly different. Please refer to the sales and purchase agreement for the actual size of each specific unit. 7. North direction as per key plan.

1 BEDROOM - TYPE 2

AVERAGE AREA - 785.66 SQ.FT -786.63 SQ.FT

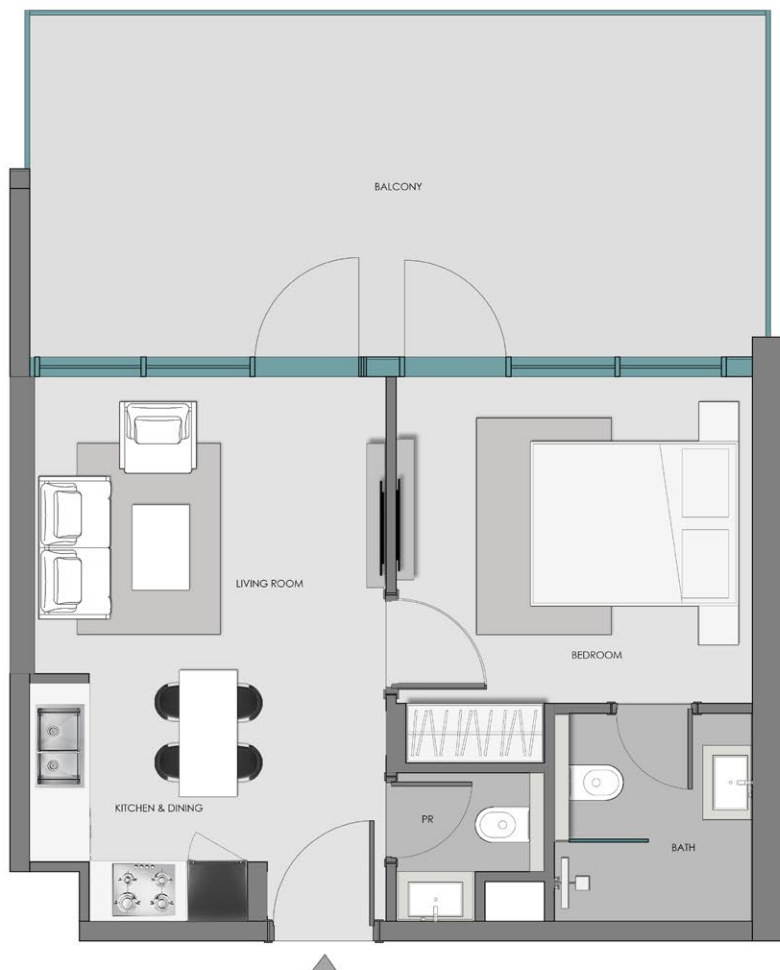


UNIT



1 BEDROOM - TYPE 3

AVERAGE AREA - 747.12 SQ.FT



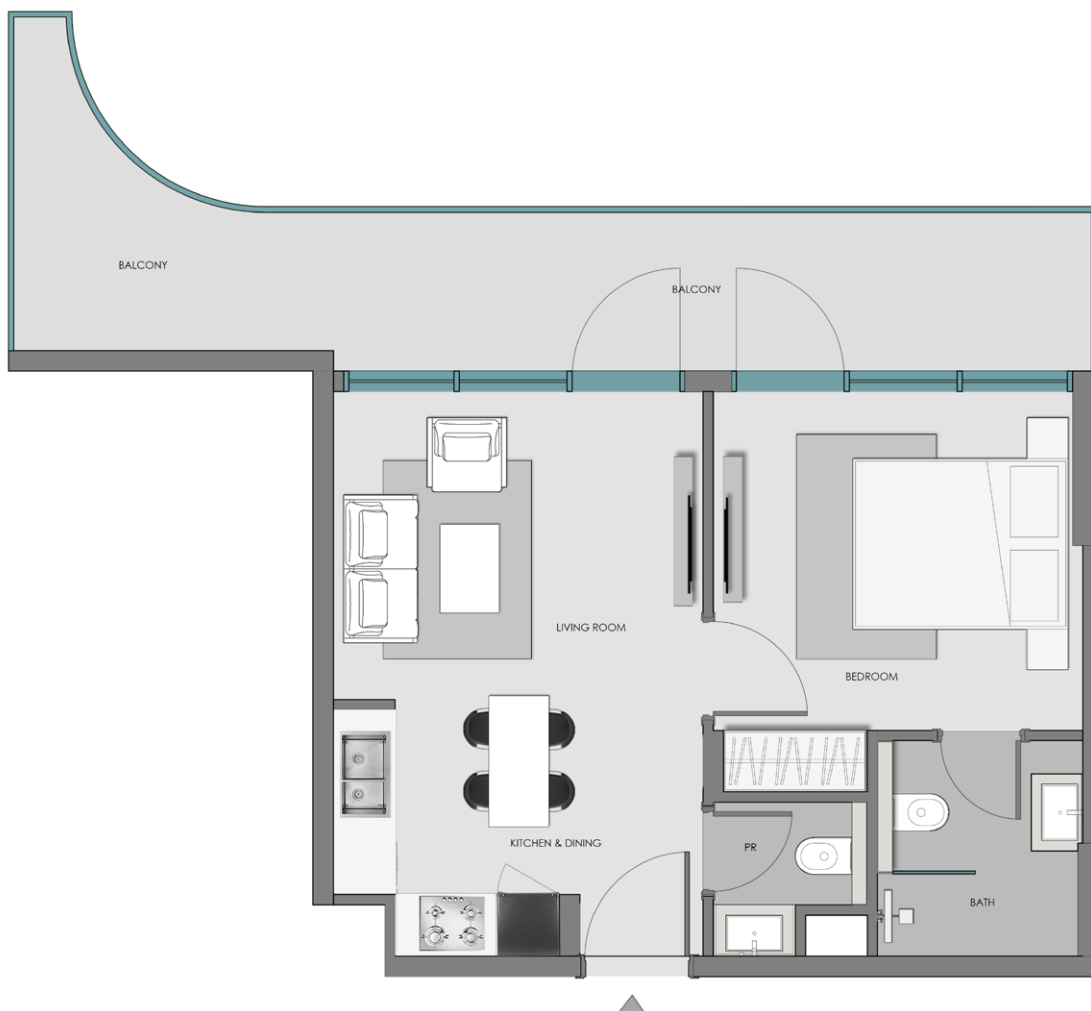
UNIT



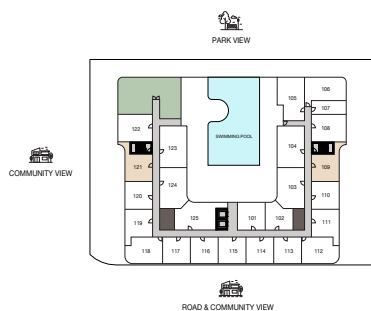
UNITS - 108, 122

1 BEDROOM - TYPE 4

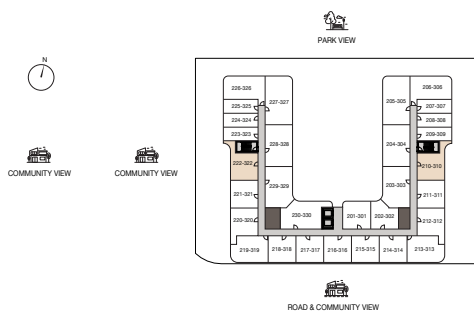
AVERAGE AREA - 663.49 SQ.FT - 664.67 SQ.FT



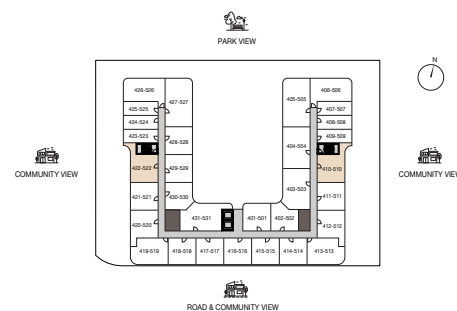
UNIT



LEVEL 01
UNITS - 109, 121



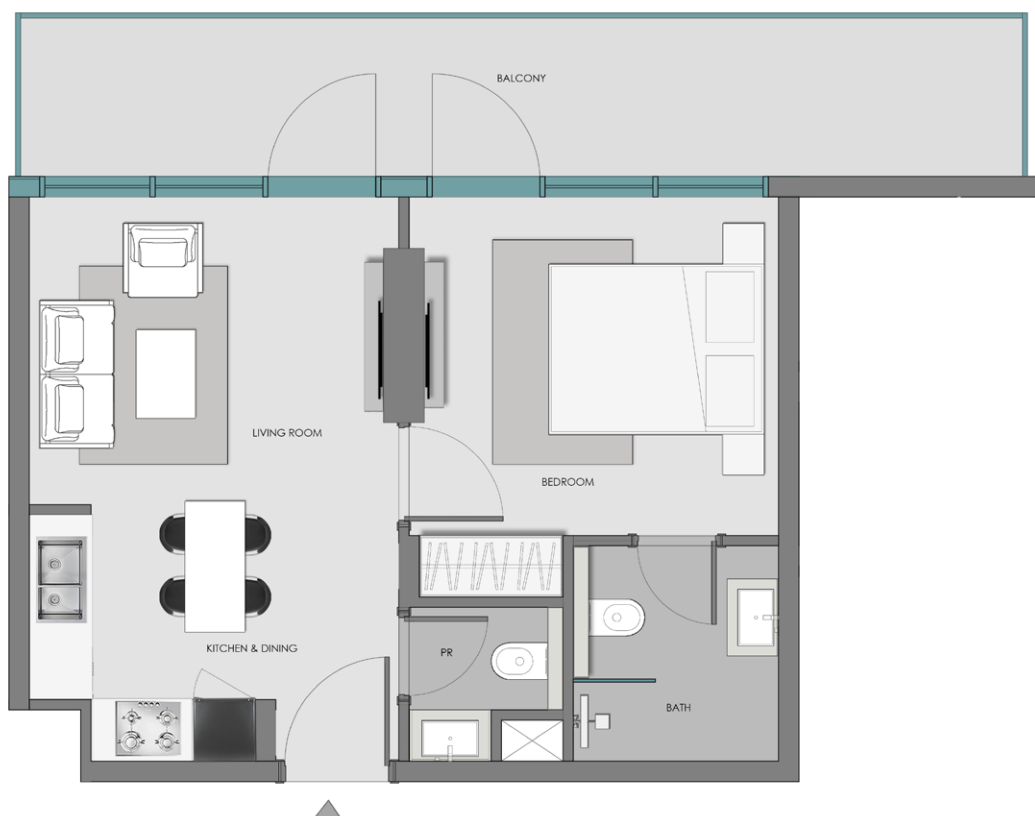
TYPICAL LEVEL 02 & 03
UNITS - 210-310, 222-322



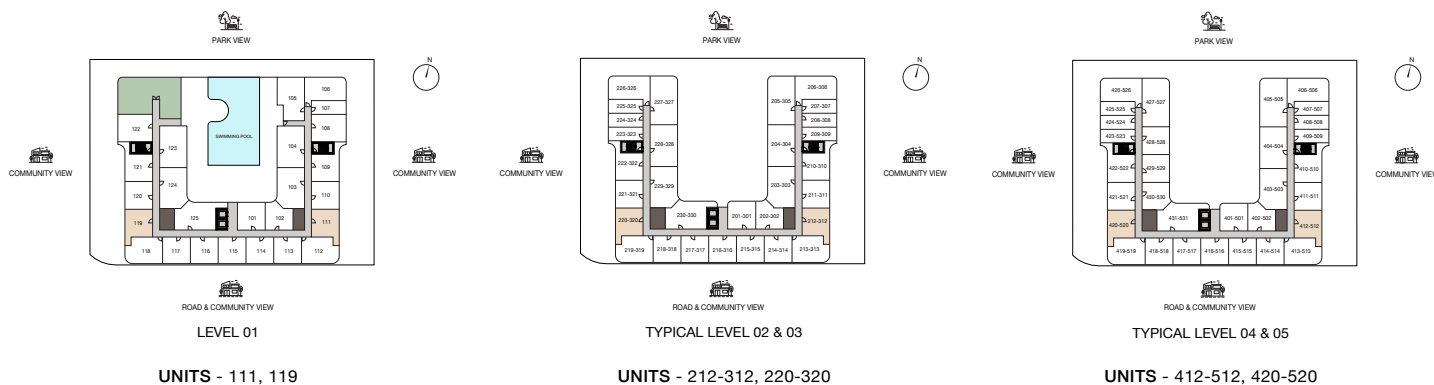
TYPICAL LEVEL 04 & 05
UNITS - 410-510, 422-522

1 BEDROOM - TYPE 5

AVERAGE AREA - 627.75 SQ.FT.

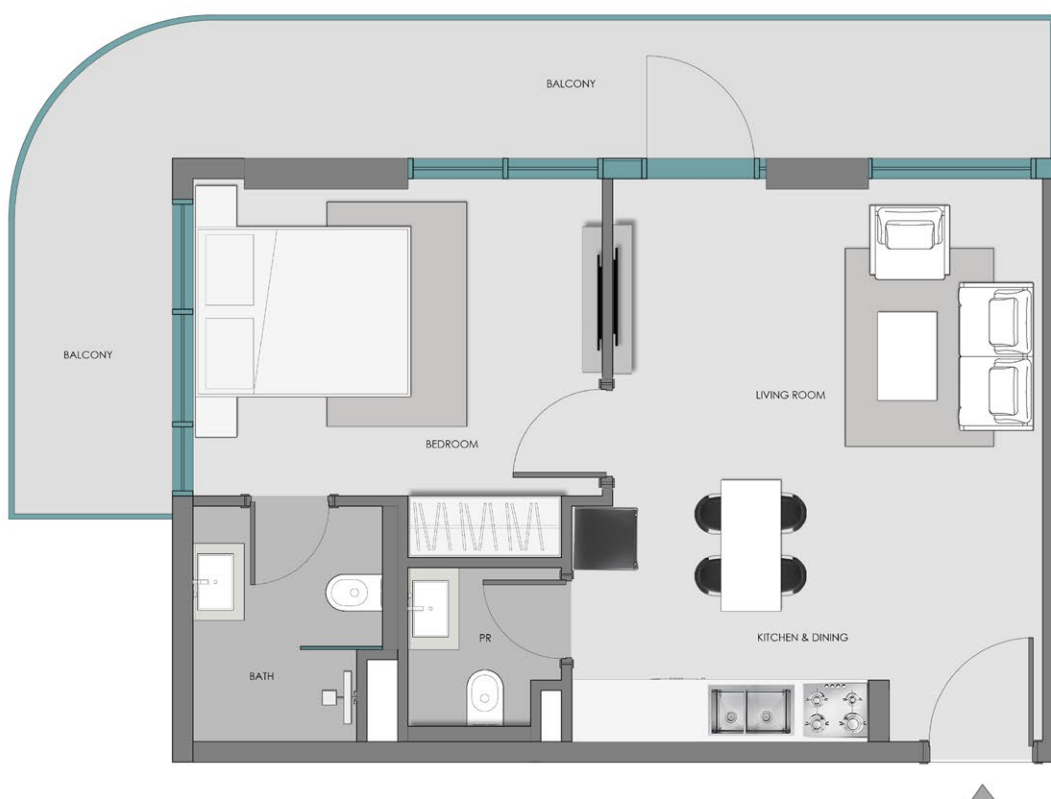


UNIT

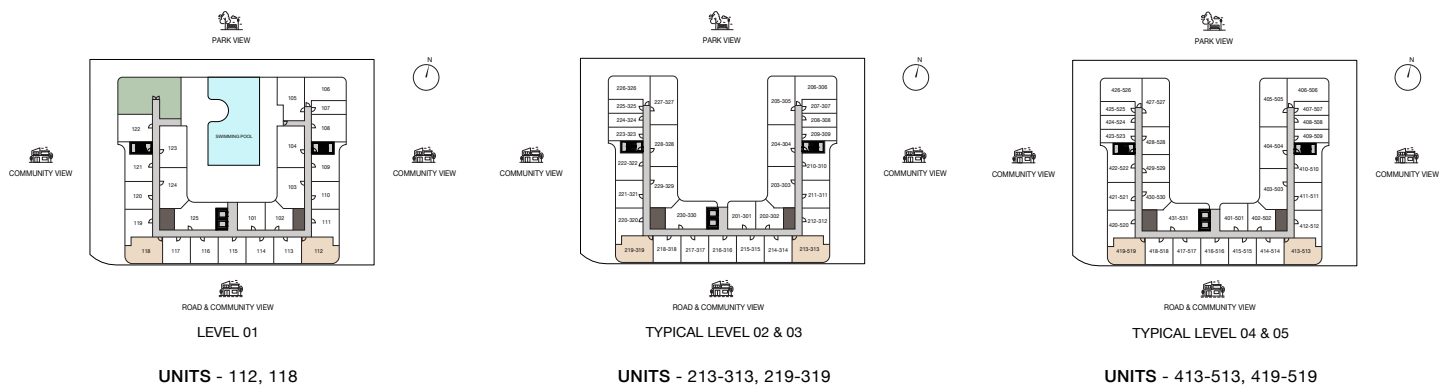


1 BEDROOM - TYPE 6

AVERAGE AREA - 728.72 SQ.FT - 729.04 SQ.FT



UNIT

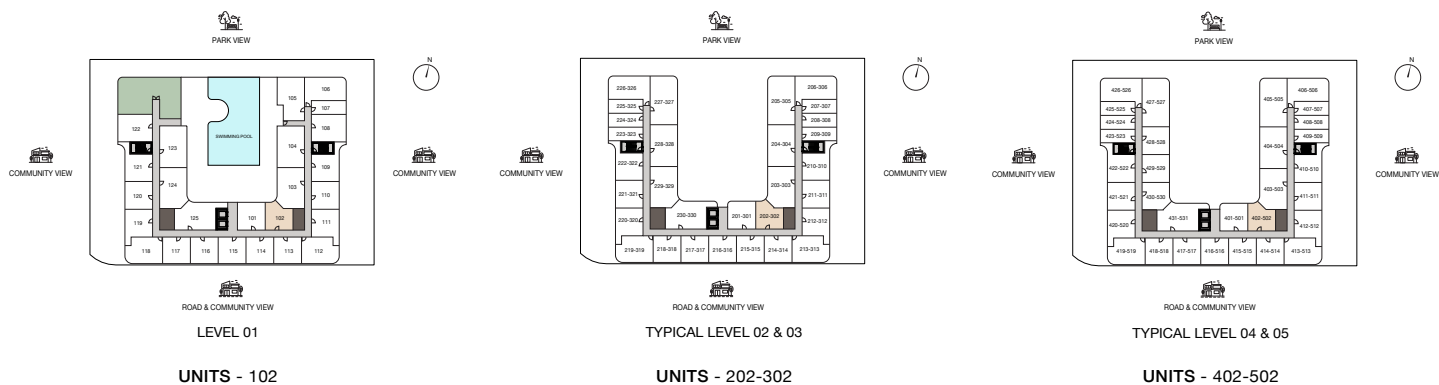


1 BEDROOM - TYPE 7

AVERAGE AREA - 521.62 SQ.FT -523.66 SQ.FT

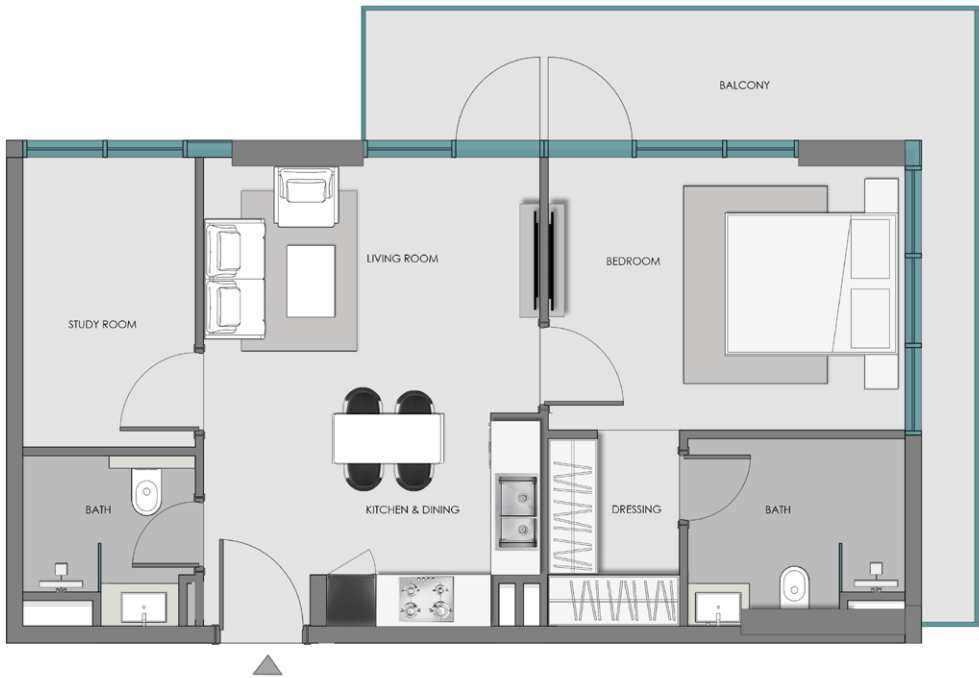


UNIT



1 BEDROOM + STUDY

AVERAGE AREA - 835.17 SQ.FT.

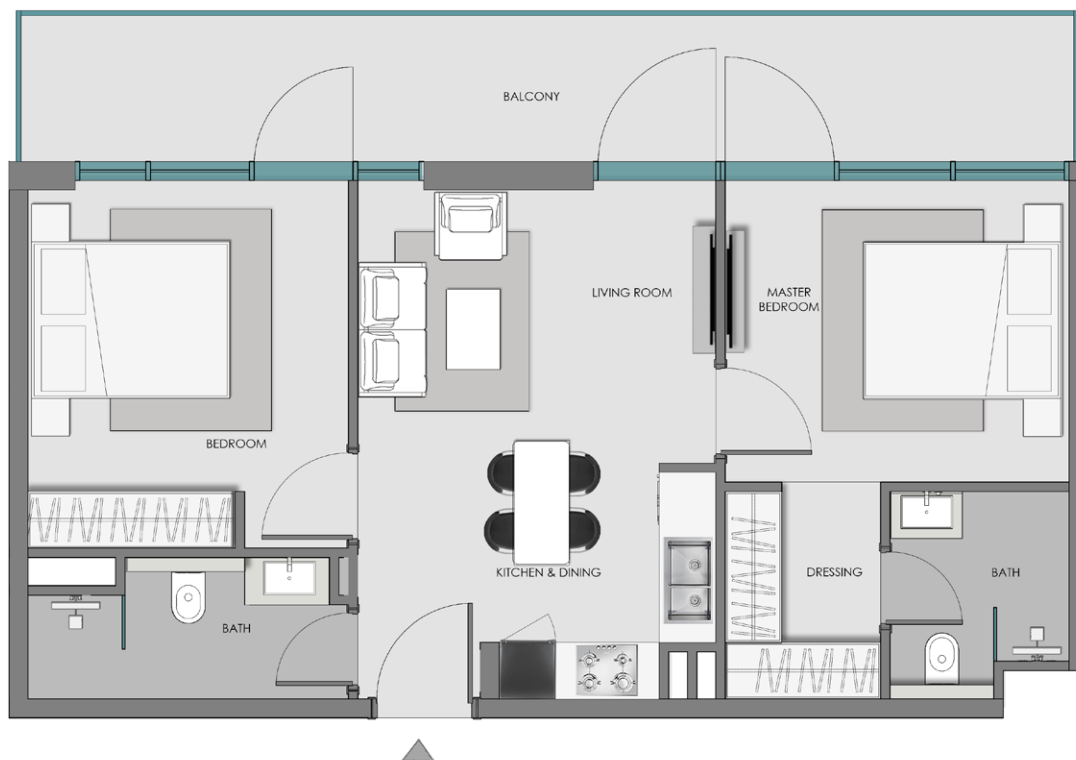


UNIT

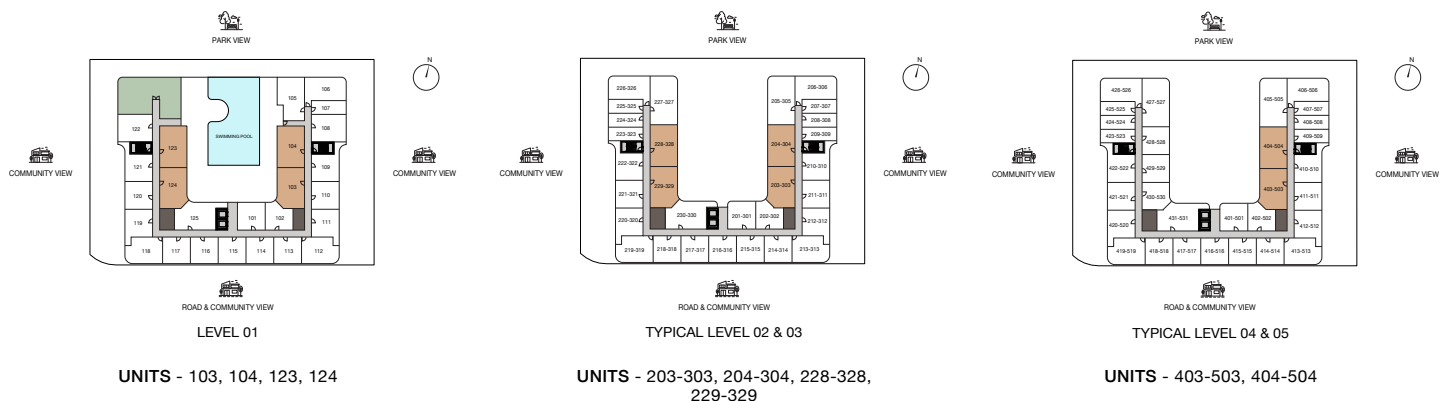


2 BEDROOM - TYPE 1

AVERAGE AREA - 859.51 SQ.FT. - 880.06 SQ.FT.

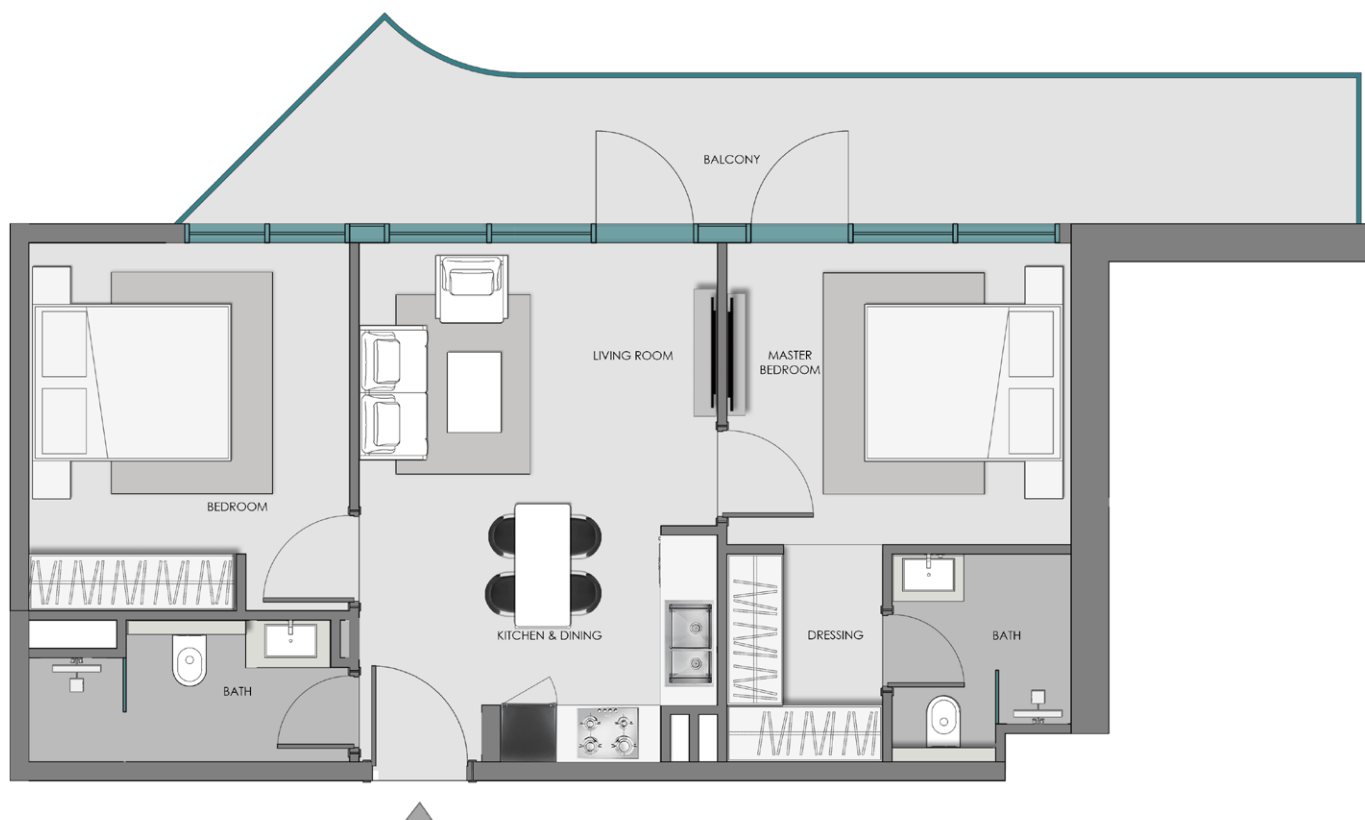


UNIT

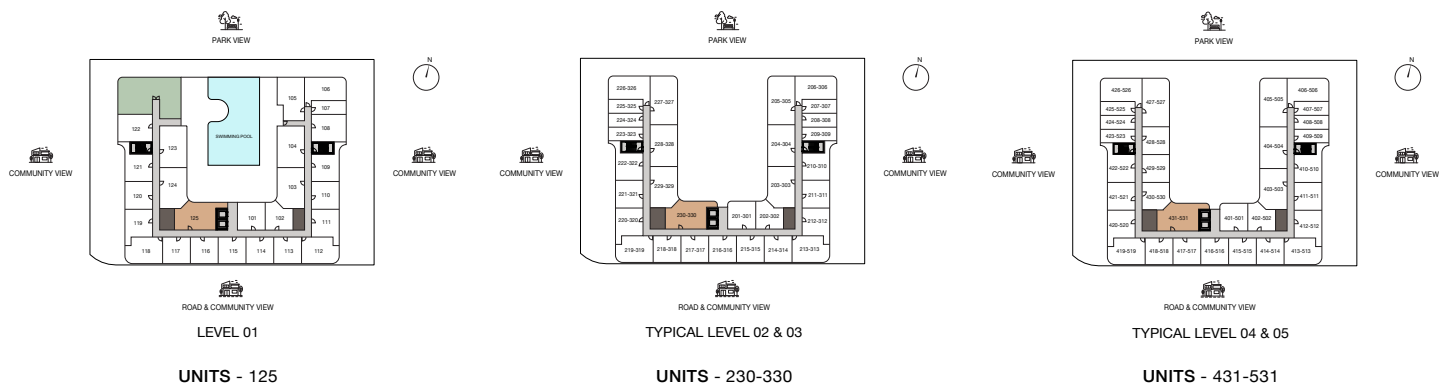


2 BEDROOM - TYPE 2

AVERAGE AREA - 896.42 SQ.FT. -904.38 SQ.FT.

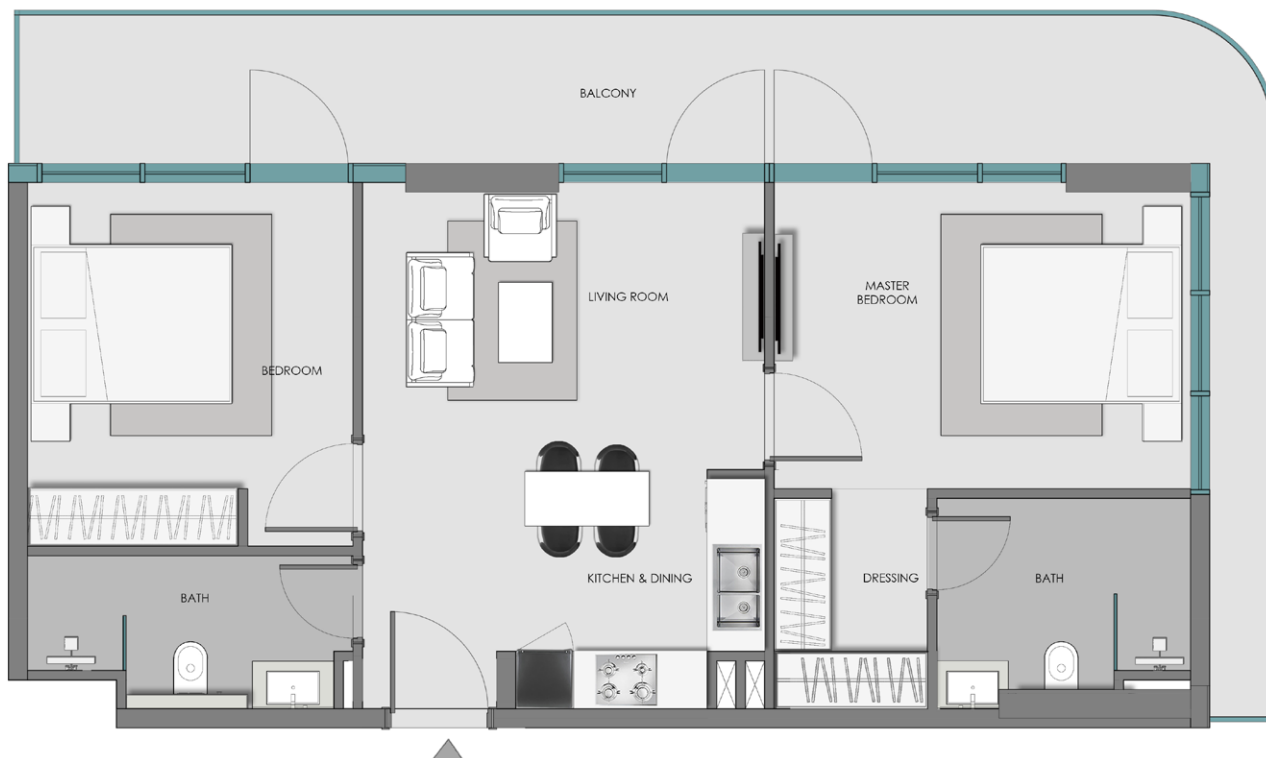


UNIT



2 BEDROOM - TYPE 3

AVERAGE AREA - 1,022.89 SQ.FT.



UNIT

