

The background of the image is a piece of marbled paper with a complex, organic pattern of light beige, cream, and pale grey tones. The pattern resembles natural stone or liquid swirls, with irregular veins and patches of color. The texture appears slightly grainy and aged.

FLOOR PLANS

Floor Plan
First Floor



Floor Plan Second Floor



Floor Plan

3rd to 8th Floor

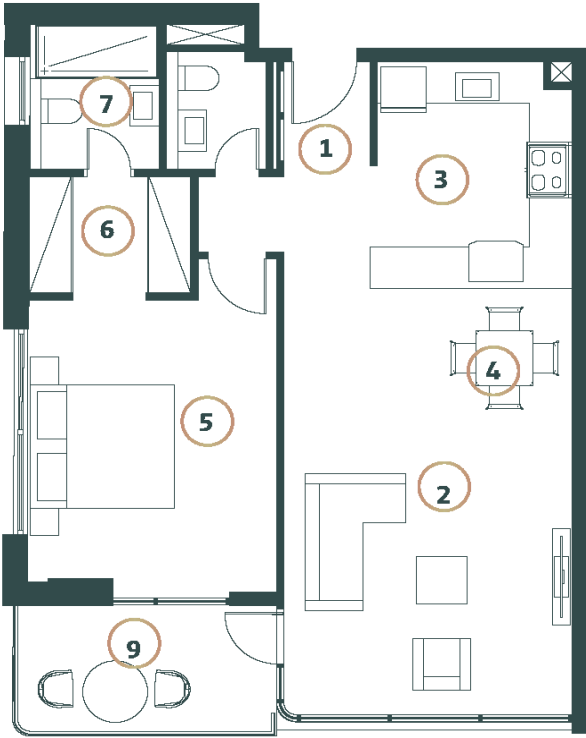


Floor Plan

Roof



One Bedroom Apartment (A) — 831.94 Sq.ft. (77.29 Sq.m.) approx.



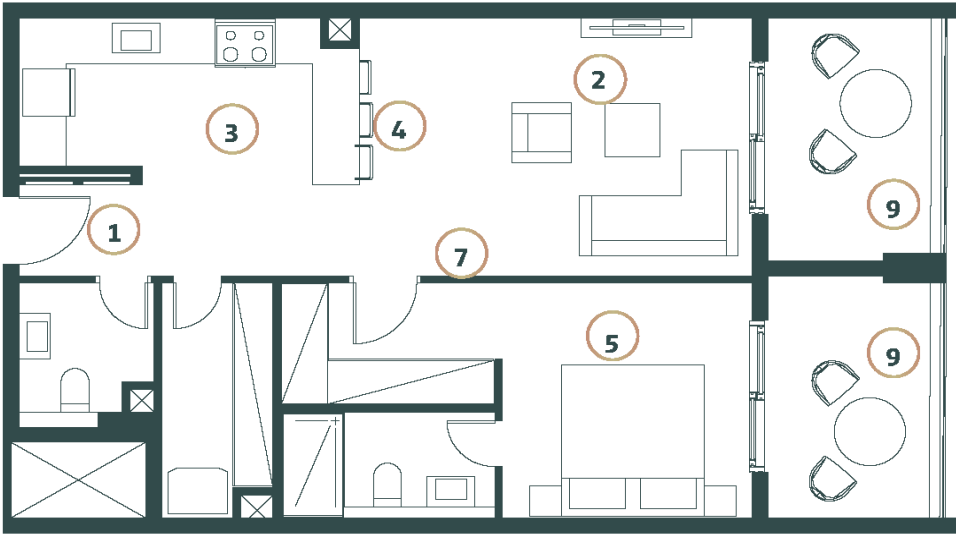
- SPACES**
- 1 Entrance Hall
 - 2 Living Room
 - 3 Kitchen
 - 4 Dining
 - 5 Master Bedroom
 - 6 Bedroom
 - 7 Bathroom
 - 8 Guest Bathroom
 - 9 Balcony



TWO BEDROOM APARTMENT (TYPE A)
TOTAL FLOOR AREA : 831.94 Sq.ft. (77.29 Sq.m.) approx.

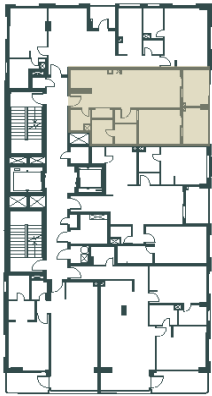
This One-bedroom apartment (Type A) offers a spacious and functional layout. Both bedrooms feature their own en-suite bathrooms, providing privacy and convenience. The modern open living area connects to a stylish kitchen with a dining table, perfect for meals and gatherings.

One Bedroom Apartment (B) — 830.76 Sq.ft (77.18 Sq.m) approx.



SPACES

- 1 Entrance Hall
- 2 Living Room
- 3 Kitchen
- 4 Dining
- 5 Master Bedroom
- 6 Bedroom
- 7 Bathroom
- 8 Guest Bathroom
- 9 Balcony



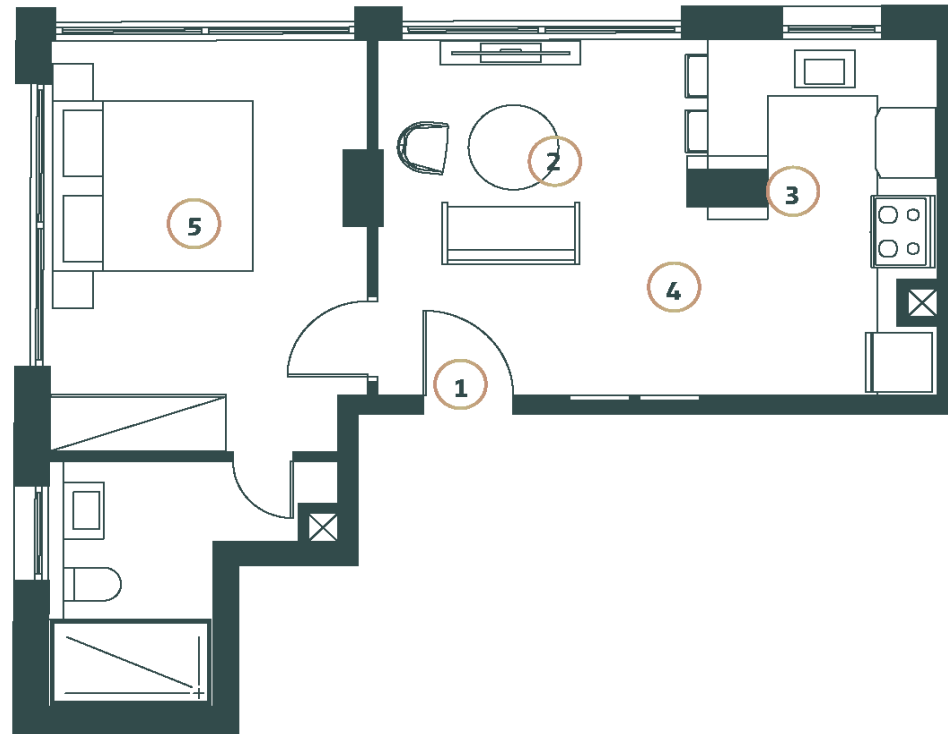
ONE BEDROOM APARTMENT (TYPE B)

TOTAL FLOOR AREA : 830.76 Sq.ft (77.18 Sq.m) approx.

This One-bedroom apartment (Type B) features a spacious living, kitchen, and dining area with floor-to-ceiling windows, inviting abundant natural light and offering stunning city views. Both bedrooms are generously sized, each with its own luxurious en-suite bathroom, ensuring privacy and comfort. A guest bathroom adds convenience for visitors.

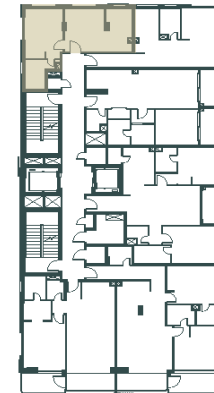
One Bedroom Apartment (C)

— 478.46 sq.fr. (44.45 sq.m.) approx.



SPACES

- ① Entrance Hall
- ② Living Room
- ③ Kitchen
- ④ Dining
- ⑤ Master Bedroom
- ⑥ Bedroom
- ⑦ Bathroom
- ⑧ Guest Bathroom
- ⑨ Balcony



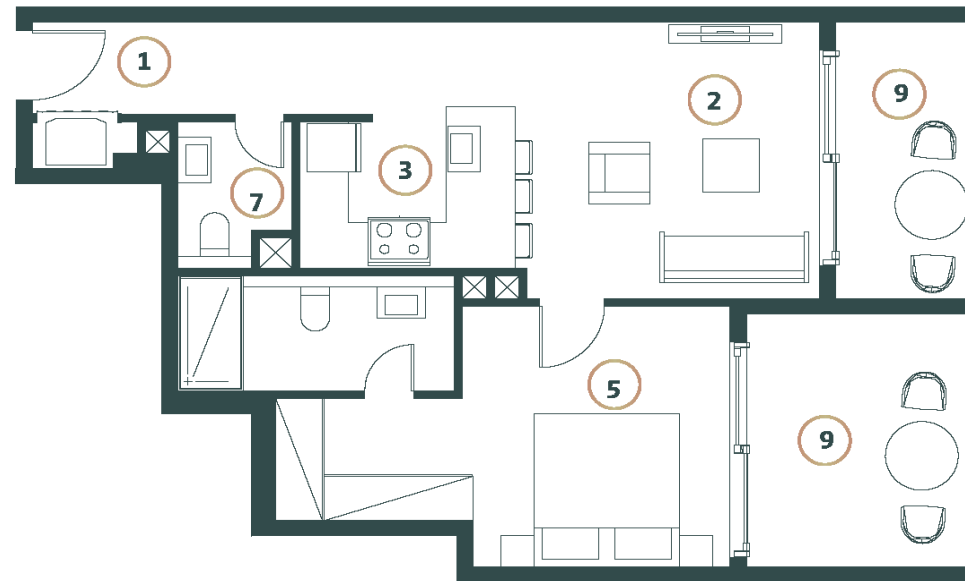
ONE BEDROOM APARTMENT (TYPE C)

TOTAL FLOOR AREA : 478.46 Sq.ft (44.45 Sq.m) approx.

This one bedroom apartment offers a spacious open-plan living, kitchen, and dining area with floor-to-ceiling windows that fill the space with natural light and reveal sweeping city views. The bedroom includes a private en-suite bathroom for comfort and privacy, while a guest bathroom provides added convenience.

One Bedroom Apartment (D)

786 Sq.ft (73.05 Sq.m) approx.



SPACES

- 1 Entrance Hall
- 2 Living Room
- 3 Kitchen
- 4 Dining
- 5 Master Bedroom
- 6 Bedroom
- 7 Bathroom
- 8 Guest Bathroom
- 9 Balcony

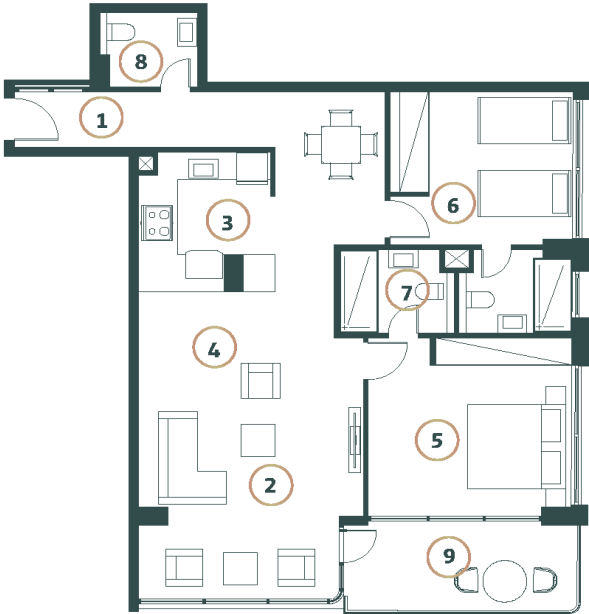


One Bedroom Apartment (D)

TOTAL FLOOR AREA : 786 Sq.ft (73.05 Sq.m) approx.

The Rooftop Apartment living area flows into a modern kitchen and dining space, ideal for daily living and small gatherings. Large windows bring in natural light, with access to a private rooftop terrace for added outdoor space.

Two Bedroom Apartment (A) — 1170.25 Sq.ft. (108.72 Sq.m.) approx.



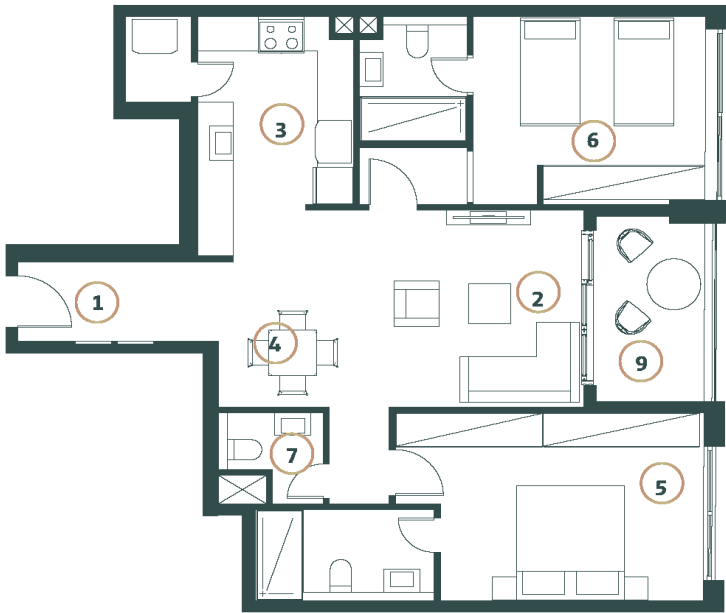
- SPACES**
- 1 Entrance Hall
 - 2 Living Room
 - 3 Kitchen
 - 4 Dining
 - 5 Master Bedroom
 - 6 Bedroom
 - 7 Bathroom
 - 8 Guest Bathroom
 - 9 Balcony



TWO BEDROOM APARTMENT (TYPE A)
TOTAL FLOOR AREA : 1170.25 sq.ft. (108.72 sq.m.) approx.

This two-bedroom apartment (Type A) features a spacious living, kitchen, and dining area with floor-to-ceiling windows, inviting abundant natural light and offering stunning city views. Both bedrooms are generously sized, each with its own luxurious en-suite bathroom, ensuring privacy and comfort. A guest bathroom adds convenience for visitors.

Two Bedroom Apartment (B) — 1022.03 Sq.ft. (94.95 Sq.m.) approx.



- SPACES**
- 1 Entrance Hall
 - 2 Living Room
 - 3 Kitchen
 - 4 Dining
 - 5 Master Bedroom
 - 6 Bedroom
 - 7 Bathroom
 - 8 Guest Bathroom
 - 9 Balcony



TWO BEDROOM APARTMENT (TYPE B)
TOTAL FLOOR AREA : 1022.03 sq.ft. (94.95 sq.m.) approx.

This two-bedroom apartment (Type B) offers a spacious and functional layout. Both bedrooms feature their own en-suite bathrooms, providing privacy and convenience. The modern open living area connects to a stylish kitchen with a dining table, perfect for meals and gatherings. A 70 sqm balcony offers stunning views of Dubai’s skyline, blending modern functionality with elegant living in Jumeirah Garden City.

**Two Bedroom
Apartment (C)** — 1023.54 Sq.ft. (95.09 Sq.m.) approx.



- SPACES**
- 1 Entrance Hall
 - 2 Living Room
 - 3 Kitchen
 - 4 Dining
 - 5 Master Bedroom
 - 6 Bedroom
 - 7 Bathroom
 - 8 Guest Bathroom
 - 9 Balcony

TWO BEDROOM APARTMENT (TYPE C)
TOTAL FLOOR AREA : 1023.54 Sq.ft. (95.09 Sq.m.) approx.

The Type C two-bedroom residence at White Stone is a sophisticated urban retreat designed for modern living in the heart of Jumeirah Garden City. Offering a seamless blend of elegance and practicality, this layout features a thoughtfully designed open-plan living, dining, and kitchen area—ideal for both quiet evenings and stylish entertaining. Floor-to-ceiling windows frame the space, drawing in natural light and offering panoramic views of the vibrant cityscape beyond.

Studio
Type (A)

509.13 Sq.ft (47.30 Sq.m) approx.



- SPACES**
- 1 Entrance Hall
 - 2 Living Room
 - 3 Kitchen
 - 4 Dining
 - 5 Master Bedroom
 - 6 Bedroom
 - 7 Bathroom
 - 8 Guest Bathroom
 - 9 Balcony



STUDIO (TYPE A)

TOTAL FLOOR AREA : 509.13 Sq.ft (47.30 Sq.m) approx.

This Studio (Type B) offers a spacious and functional layout. bedroom feature their own en-suite bathrooms, providing privacy and convenience. The modern open living area connects to a stylish kitchen with a dining table, perfect for meals and gatherings.