



WYNWOOD
HORIZON

IMTIAZ

IMTIAZ

IMTIAZ DEVELOPMENTS IS AN AWARD-WINNING DUBAI DEVELOPER WITH OVER THIRTY YEARS OF EXPERTISE IN CRAFTING LANDMARK PROJECTS. WITH A PORTFOLIO EXCEEDING AED 10 BILLION IN SALES AND MORE THAN 40 PROJECTS UNDERWAY, IMTIAZ HAS EARNED ITS REPUTATION AS A TRUSTED NAME IN REAL ESTATE. GUIDED BY A DESIGN-DRIVEN PHILOSOPHY AND A FOCUS ON LIFESTYLE-ORIENTED COMMUNITIES, THE COMPANY CONTINUES TO SHAPE DISTINCTIVE DEVELOPMENTS THAT EMBODY QUALITY, INNOVATION, AND ENDURING VALUE.

A Journey to Perfection

40+

PROJECTS

AED 10Bn

DEVELOPMENTS

AWARDS



THE PRESTIGIOUS MOHAMMED
BIN RASHID MEDAL FOR
PHILANTHROPY, 2025

Middle East
Economy

A LEADING WATERFRONT
DEVELOPER BY ECONOMY
MIDDLE EAST, 2024

Construction
Week **AWARDS**
MIDDLE EAST 2024

RISING DEVELOPER
OF THE YEAR, 2024



LEADING PROPERTY
DEVELOPERS UAE, 2024

Design
Middle East

MEGA LUXURY PROJECT
COVE BY IMTIAZ, 2024

@bayut
AWARDS
2023

THE RISING STAR DEVELOPER
OF THE YEAR, 2023

An aerial photograph of a lagoon with intricate, winding sandbars and channels. The water is a deep, dark blue, while the sandbars are a lighter, golden-brown color. A large, semi-circular graphic, composed of two concentric arcs, is centered over the lagoon. The text is placed within the negative space of this graphic.

A Private World *by the Lagoon*

Wynwood Horizon by Intiaz is a distinguished address within the visionary Meydan landscape. This landmark provides seamless access to the city's key business, cultural, and leisure destinations.

An Urban Rarity
Led By Nature



A Sanctuary of Stillness

There are places made for everyone, and then there is Wynwood Horizon by Imtiaz. Composed with care, intended for those who move through the world differently, with sophistication and distinction.



The City's Green Heart

Wynwood Horizon offers a rare connection to nature. With 4-km urban promenades, lush parks, community plazas, and thoughtfully designed public amenities, residents enjoy uninterrupted skyline views and well-being.





*A View
Beyond
Boundaries*

A woman with her hair in a bun, wearing a long black backless dress, stands on a balcony with a glass railing, looking out over a large body of water. The water reflects the sky and the surrounding buildings and palm trees. The scene is framed by a large, semi-circular archway. The background shows a city skyline across the water, with palm trees and modern buildings. The lighting is soft, suggesting dawn or dusk.

A Canvas of Light and Water

From sunrise reflections to twilight glows, every residence at Wynwood Horizon opens to enchanting views of the Dubai Lagoon, Downtown skyline, and a wildlife sanctuary, framing life in its most breathtaking form.

A Mirror of Architectural *Beauty*

Wynwood Horizons offers residents an address that is as visually stunning as it is thoughtfully crafted, with its striking architecture that reflects the glow of dusk.





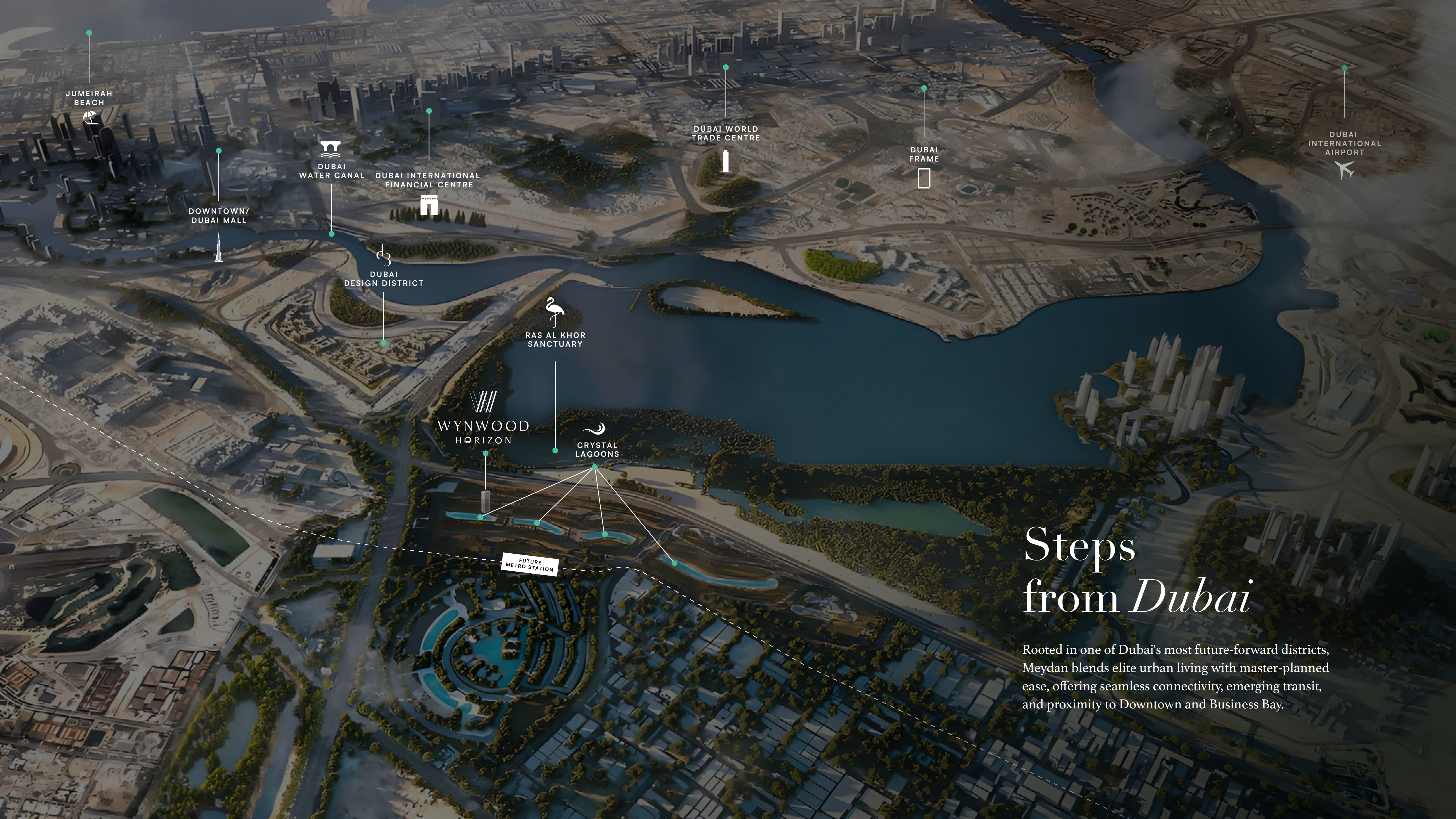
Artful Podium

The multi-level podium is a masterpiece of design, seamlessly blending pools, children's play areas, and inviting seating zones into a lively, community-focused sanctuary.

An aerial photograph of a calm canal in Dubai, flanked by dense tropical vegetation including palm trees and weeping willows. A small wooden dock with some equipment is visible on the left bank. The water is a deep teal color, and the scene is captured in soft, natural light.

Meydan, *Dubai*

Rising within Meydan's evolving master plan, Wynwood Horizon enjoys a rare vantage point framed by the city's most dynamic districts and future-ready infrastructure.



Steps from *Dubai*

Rooted in one of Dubai's most future-forward districts, Meydan blends elite urban living with master-planned ease, offering seamless connectivity, emerging transit, and proximity to Downtown and Business Bay.



Set on the Lagoon's Edge

Wynwood Horizon by Imtiaz is situated along the shores of crystal lagoons, designed as serene, swimmable beaches edged with soft sand. Surrounded by lush greenery, shaded walkways, and vibrant community plazas, it offers an unmatched family-friendly lifestyle.


WYNWOOD
HORIZON



A Sanctuary by the Lagoon

Bordering Wynwood Horizon, a Wildlife
Sanctuary hosting nearly 450 species of flora and
fauna, including 47 hectares of mangroves.



Four Crystal Lagoons

Wynwood Horizon by Imtiaz is surrounded by four crystal lagoons, spanning 2 km lounge decks, cabanas, and invigorating leisure for residents.



Golden Shores Framed by *Urban Life*

A serene address offering swimmable
crystal lagoons, sandy shores, and
green Dubai's vibrant urban lifestyle.

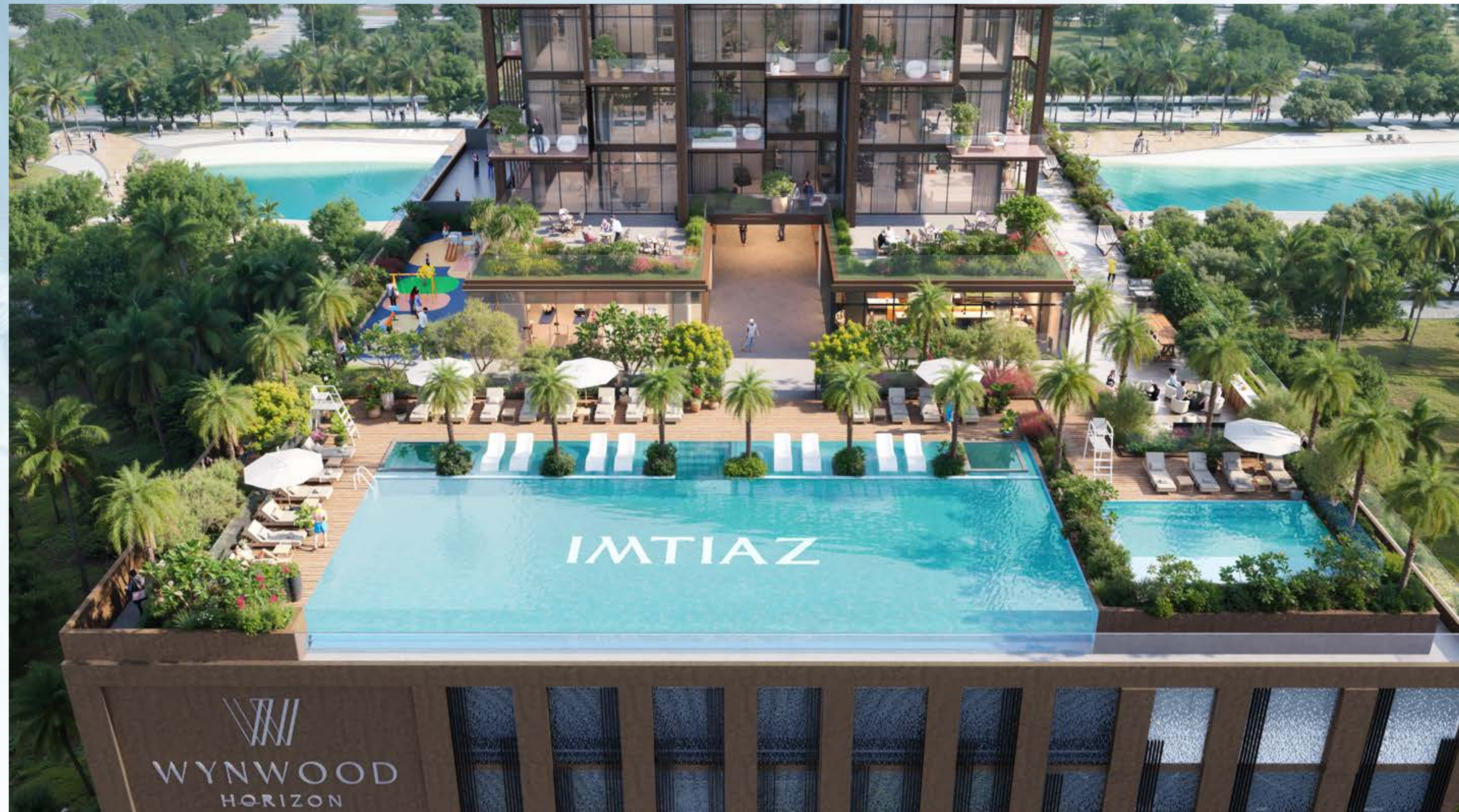


Resort-Style Living

Within the building, Wynwood Horizon offers an infinity pool with elegant sunken decks, creating serene spaces for relaxation and social gatherings.

Everlasting Serenity

Flow in sweeping views from the infinity pool, complete with sunken seating that invites you to relax, unwind, and enjoy tranquil moments above the city's vibrant energy.





Unfolding
Where the
Water Leads



Serenity *in Structure*

Wynwood Horizon echoes the grace of its setting with its architecture that flows in harmony and lagoon-side location.





A Majestic *Welcome*

Step into a stone-clad lobby bathed in layered light, a serene space open to the sky. Curated artefacts, textures, and greenery set a gentle rhythm for the life beyond.



Lobby



Crafted for *Leisure*

Bathed in natural light and framed in warm textures, the clubhouse offers quiet corners for focus, open lounges for connection, and soft transitions between play, pause, and presence.









A Canvas for Lasting *Moments*

A living experience attuned to the day's gentle rhythm, where every arrival dissolves the weight of the day, and ease takes its rightful place.







 Dining Area






Luxury, Layered *by Design*

Every corner, whether a home, retail space, or built-in office, is crafted to elevate daily living with comfort, clarity, and uninterrupted views across the horizon.



Master Bedroom



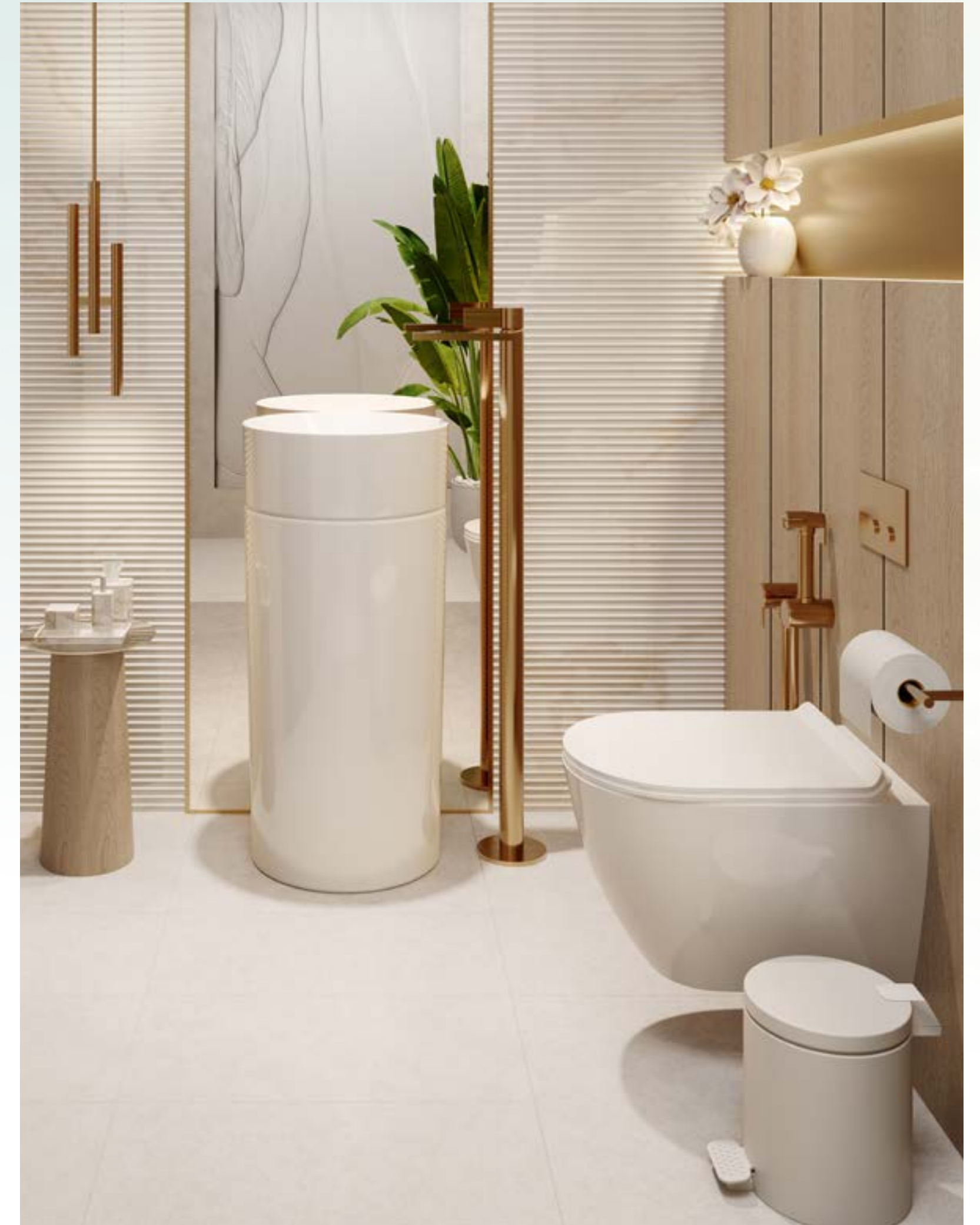
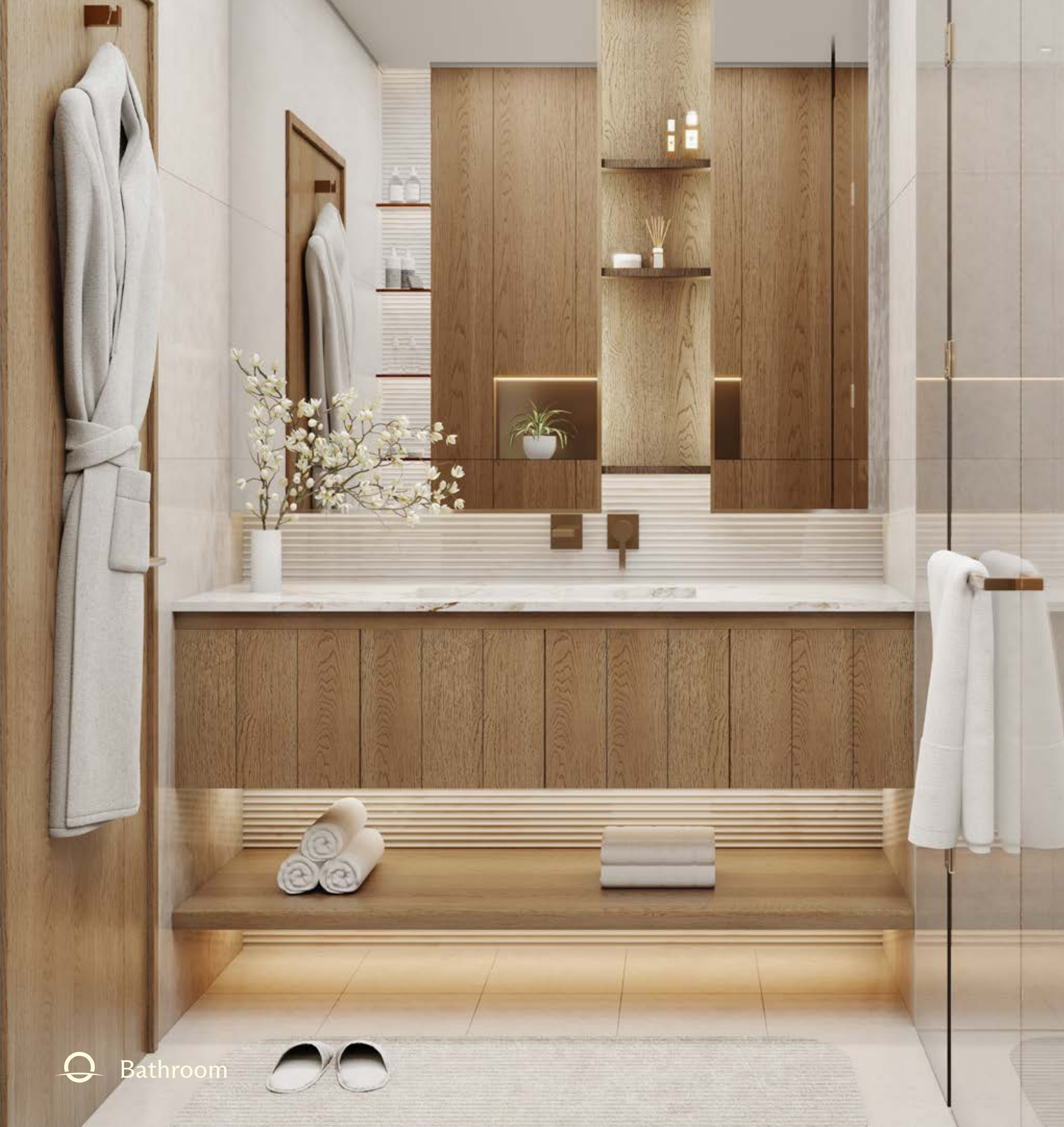
 Master Bedroom





Where the World Takes *a Pause*

A space that absorbs the noise, softens the edges, and invites stillness. Resting here feels natural, unforced — like the world has gently exhaled, and so have you.



Amenities



Clubhouse



Gym



Adult Pool



Kids' Zone



Courtyard



EV Charging



BBQ Area



Kids' Pool



Sunken Seating



Outdoor Cinema



A Blend of *Vision and Vitality*

Each home arrives move-in ready, meticulously finished with state-of-the-art appliances, custom kitchens, intuitive smart controls, and designer fittings throughout. From modern ceilings and ambient lighting to premium finishes and bespoke details; sophistication isn't added, it's embedded in every detail.

