

# FLOOR PLANS





\*Balcony sizes vary

## 1 bedroom - Unit type A

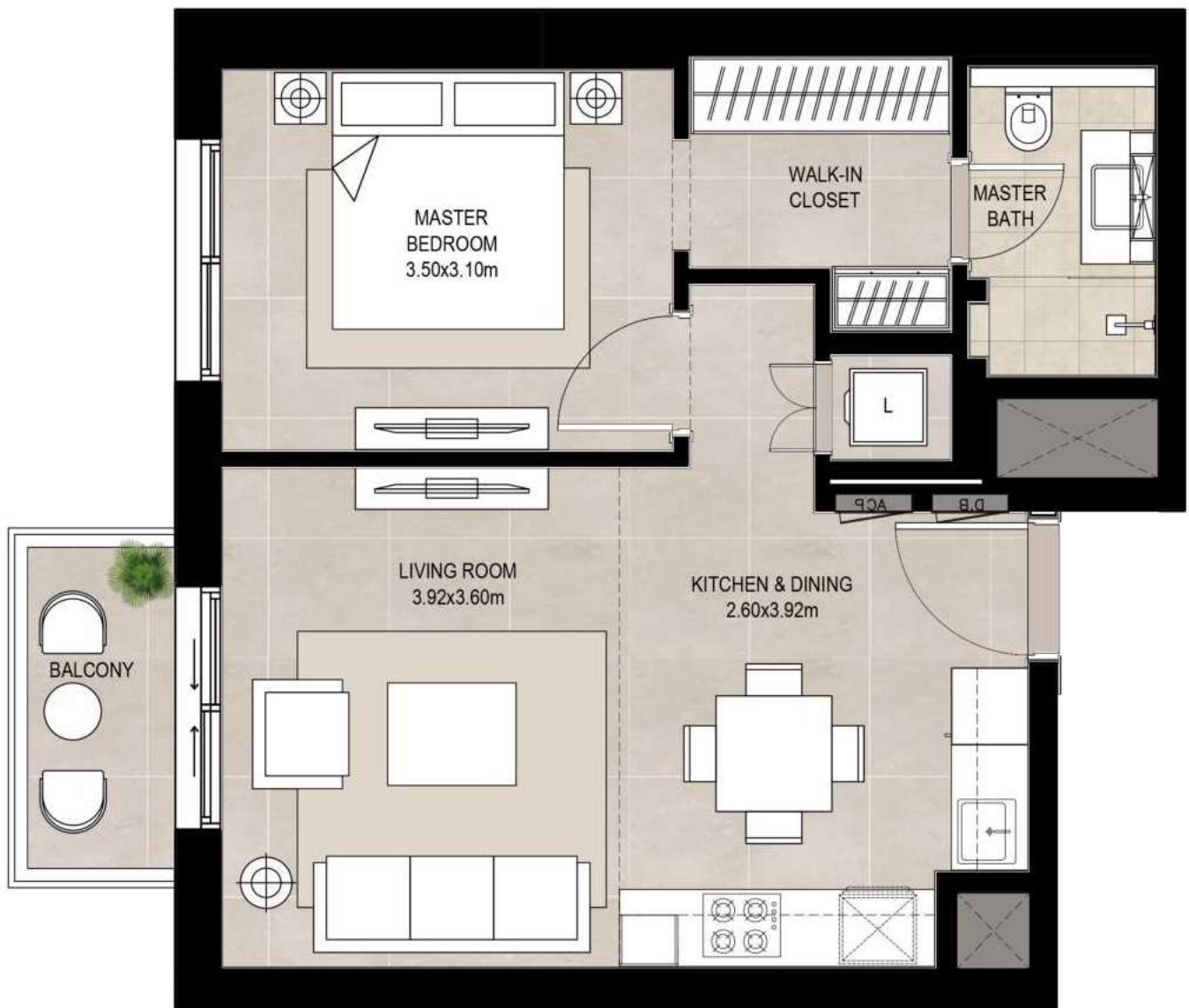
Area	Min	Max
Suite	54.90 Sq.m / 590.94 Sq.ft	55.15 Sq.m / 593.63 Sq.ft
Balcony	4.19 Sq.m / 45.10 Sq.ft	4.19 Sq.m / 45.10 Sq.ft
Total built-up	59.09 Sq.m / 636.04 Sq.ft	59.34 Sq.m / 638.73 Sq.ft

### Disclaimer

1. All room dimensions are in metric and measured to structural elements and exclude wall finishes and construction tolerances. 2. All dimensions have been provided by our consultant architects. 3. All materials, dimensions, drawings features and amenities are approximate at the time of printing. 4. Actual area may vary from stated area. Drawings not to scale E&OE. The developer reserves the right to make revisions to the floor plans and any features, materials, dimensions, drawings and amenities mentioned in this brochure without notice.

# OLBIA





\*Balcony sizes vary

## 1 bedroom - Unit type B

Area	Min	Max
Suite	50.35 Sq.m / 541.96 Sq.ft	50.36 Sq.m / 542.07 Sq.ft
Balcony	4.19 Sq.m / 45.10 Sq.ft	4.19 Sq.m / 45.10 Sq.ft
Total built-up	54.54 Sq.m / 587.06 Sq.ft	54.55 Sq.m / 587.17 Sq.ft

OLBIA

### Disclaimer

1. All room dimensions are in metric and measured to structural elements and exclude wall finishes and construction tolerances. 2. All dimensions have been provided by our consultant architects. 3. All materials, dimensions, drawings features and amenities are approximate at the time of printing. 4. Actual area may vary from stated area. Drawings not to scale E&OE. The developer reserves the right to make revisions to the floor plans and any features, materials, dimensions, drawings and amenities mentioned in this brochure without notice.



\*Balcony sizes vary

## 2 bedroom - Unit type A

Suite	81.10 Sq.m / 872.95 Sq.ft
Balcony	6.80 Sq.m / 73.19 Sq.ft
Total built-up	87.90 Sq.m / 946.15 Sq.ft

### Disclaimer

1. All room dimensions are in metric and measured to structural elements and exclude wall finishes and construction tolerances. 2. All dimensions have been provided by our consultant architects. 3. All materials, dimensions, drawings features and amenities are approximate at the time of printing. 4. Actual area may vary from stated area. Drawings not to scale E&OE. The developer reserves the right to make revisions to the floor plans and any features, materials, dimensions, drawings and amenities mentioned in this brochure without notice.

# OLBIA



\*Balcony sizes vary

## 2 bedroom - Unit type B

Suite	73.95 Sq.m / 795.99 Sq.ft
Balcony	11.14 Sq.m / 119.91 Sq.ft
Total built-up	85.09 Sq.m / 915.90 Sq.ft

### Disclaimer

1. All room dimensions are in metric and measured to structural elements and exclude wall finishes and construction tolerances. 2. All dimensions have been provided by our consultant architects. 3. All materials, dimensions, drawings features and amenities are approximate at the time of printing. 4. Actual area may vary from stated area. Drawings not to scale E&OE. The developer reserves the right to make revisions to the floor plans and any features, materials, dimensions, drawings and amenities mentioned in this brochure without notice.

# OLBIA



\*Balcony sizes vary

## 2 bedroom - Unit type C

Suite	88.74 Sq.m / 955.19 Sq.ft
Balcony	6.14 Sq.m / 66.09 Sq.ft
Total built-up	94.88 Sq.m / 1021.28 Sq.ft

### Disclaimer

1. All room dimensions are in metric and measured to structural elements and exclude wall finishes and construction tolerances. 2. All dimensions have been provided by our consultant architects. 3. All materials, dimensions, drawings features and amenities are approximate at the time of printing. 4. Actual area may vary from stated area. Drawings not to scale E&OE. The developer reserves the right to make revisions to the floor plans and any features, materials, dimensions, drawings and amenities mentioned in this brochure without notice.

# OLBIA





\*Balcony sizes vary

## 3 bedroom - Unit type A

Suite	119.73 Sq.m / 1288.76 Sq.ft
Balcony	10.41 Sq.m / 112.05 Sq.ft
Total built-up	130.14 Sq.m / 1400.82 Sq.ft

### Disclaimer

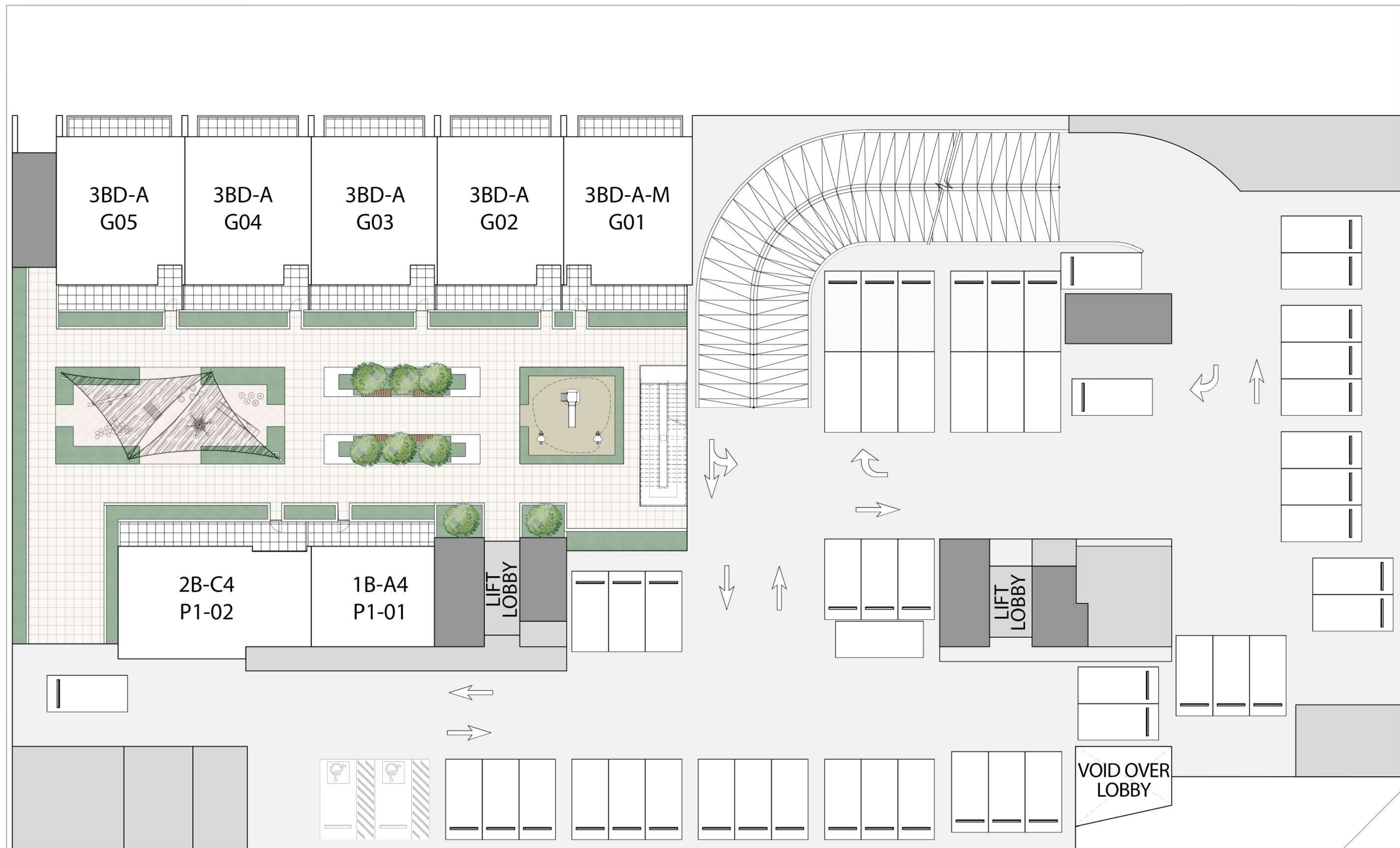
1. All room dimensions are in metric and measured to structural elements and exclude wall finishes and construction tolerances. 2. All dimensions have been provided by our consultant architects. 3. All materials, dimensions, drawings features and amenities are approximate at the time of printing. 4. Actual area may vary from stated area. Drawings not to scale E&OE. The developer reserves the right to make revisions to the floor plans and any features, materials, dimensions, drawings and amenities mentioned in this brochure without notice.

# OLBIA

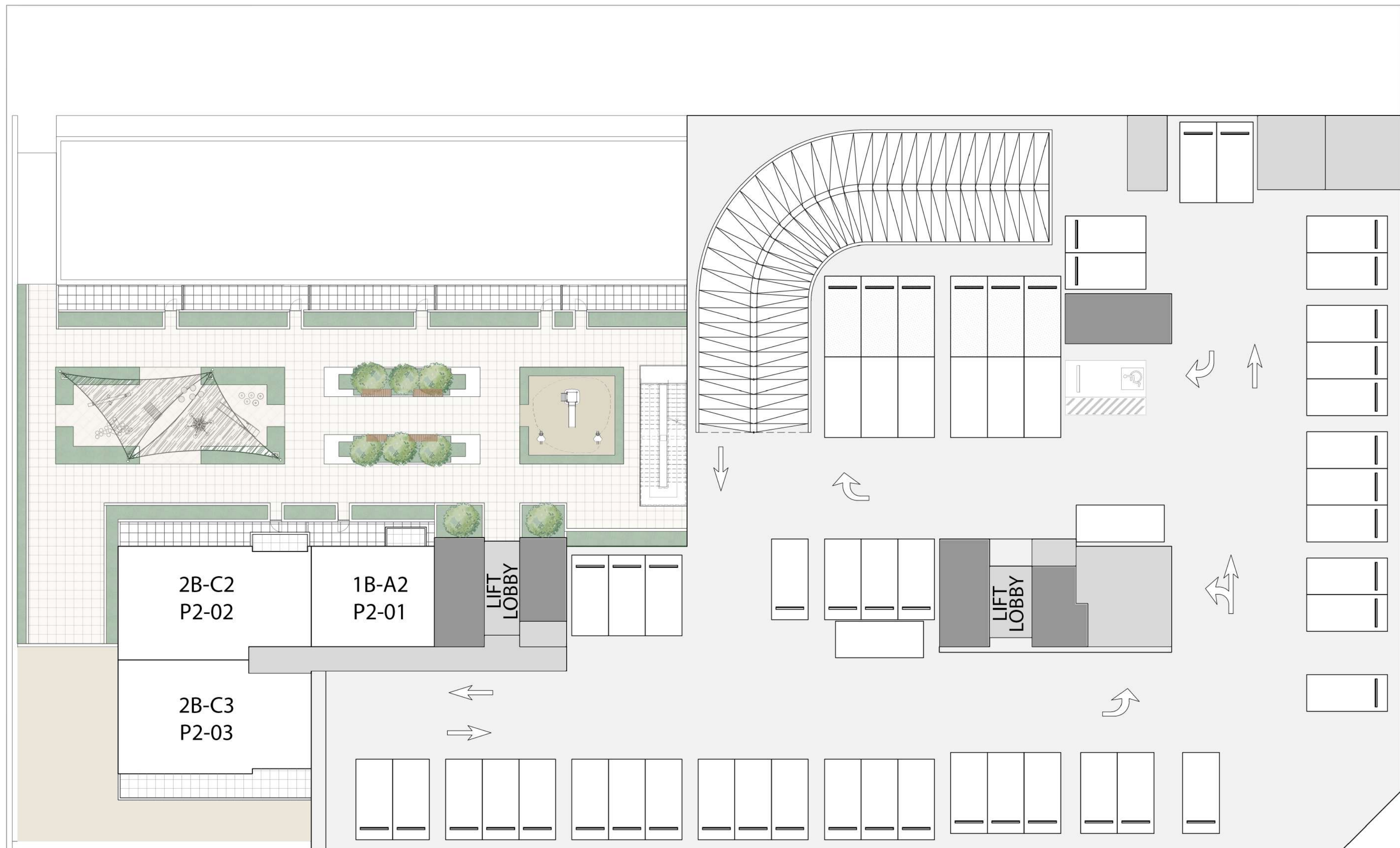


GROUND FLOOR



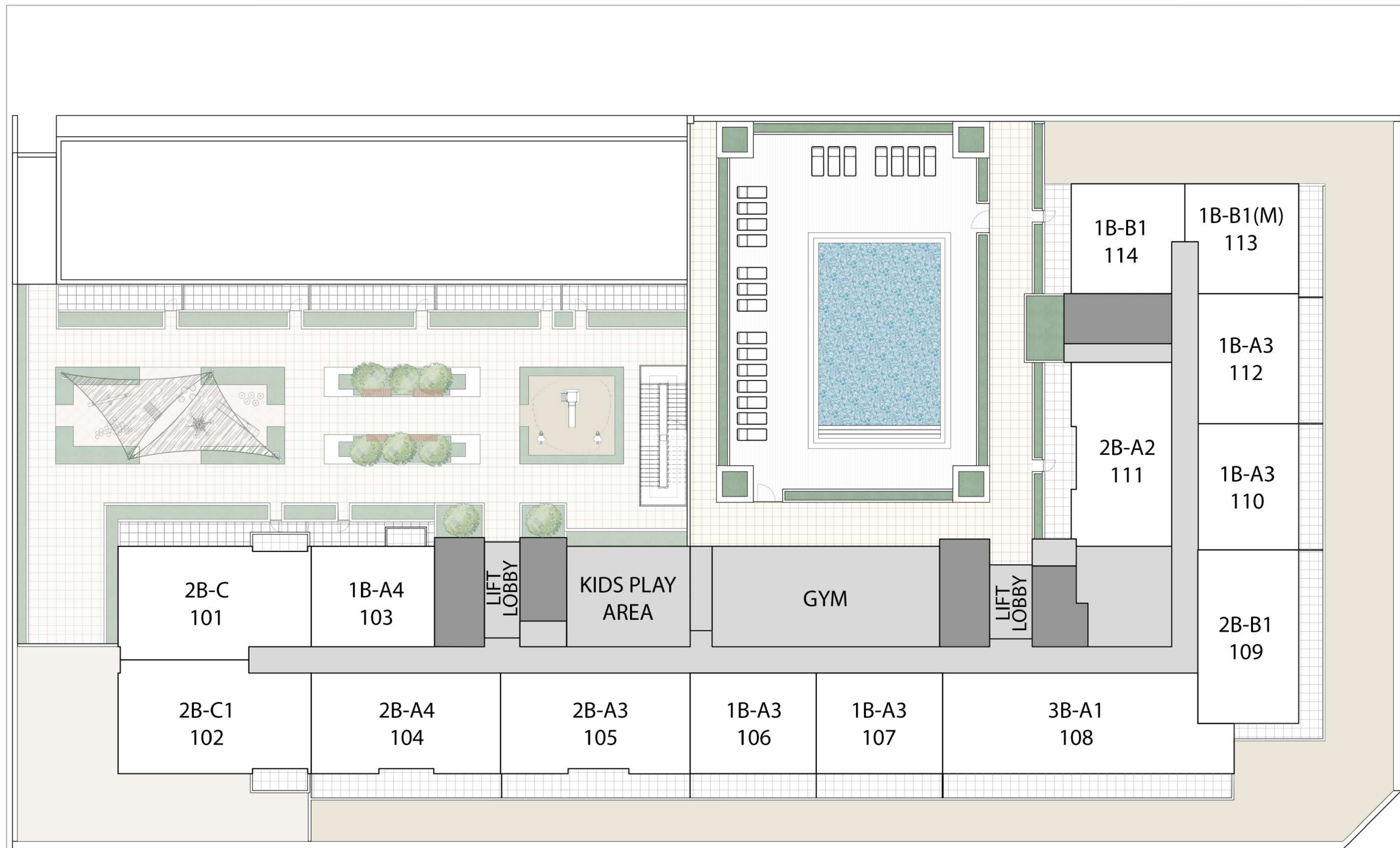


PODIUM 1

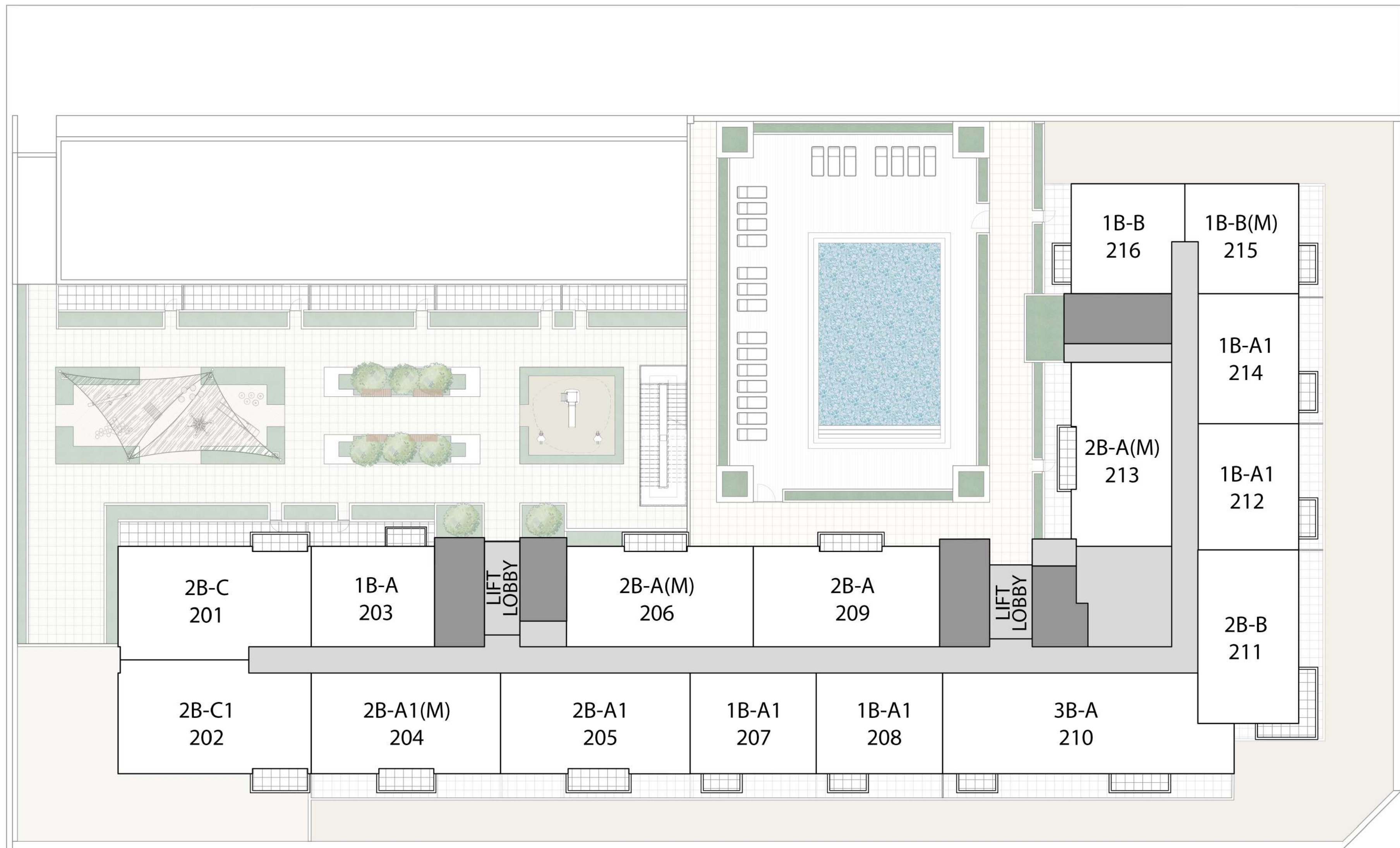


PODIUM 2



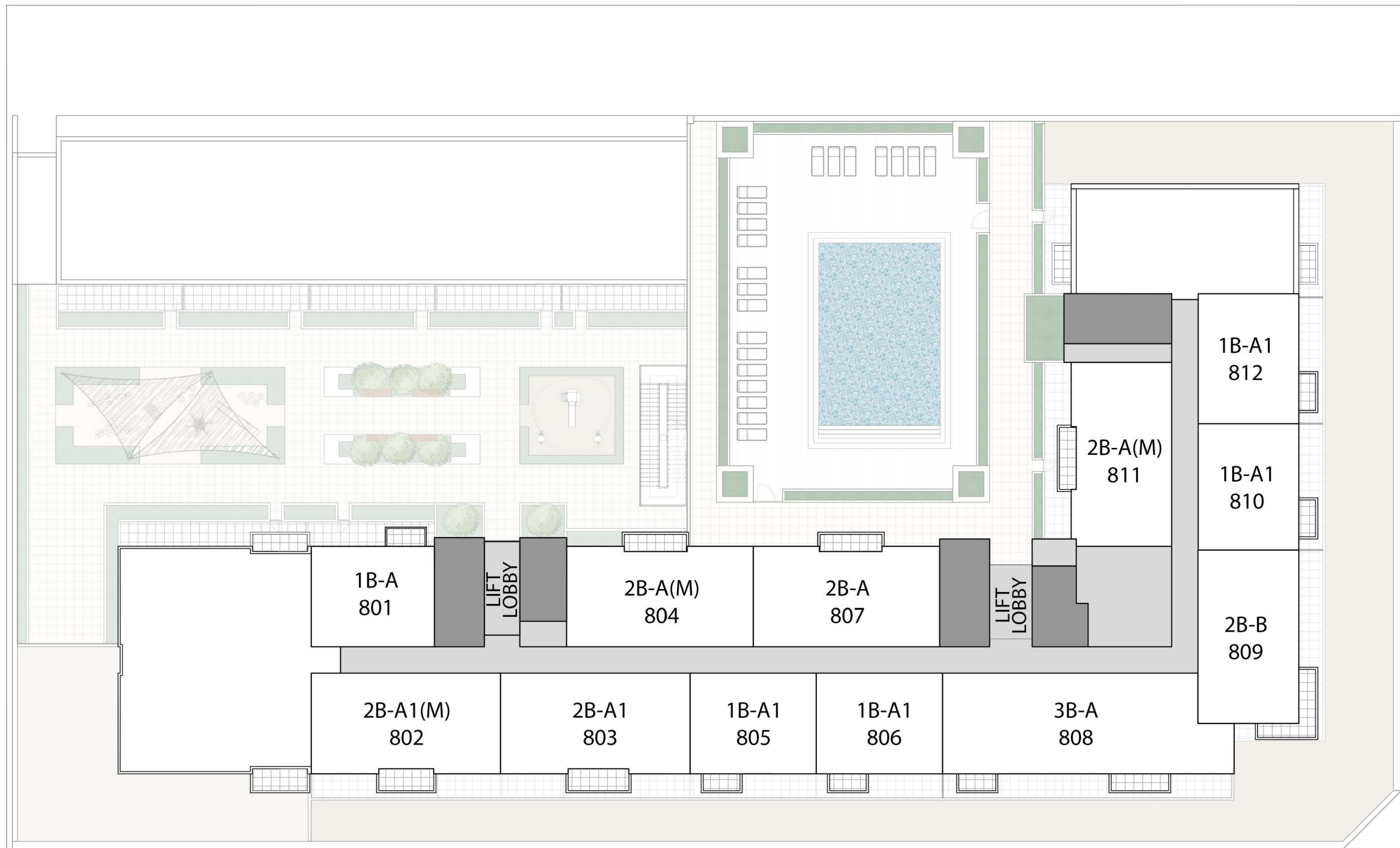


1<sup>ST</sup> FLOOR

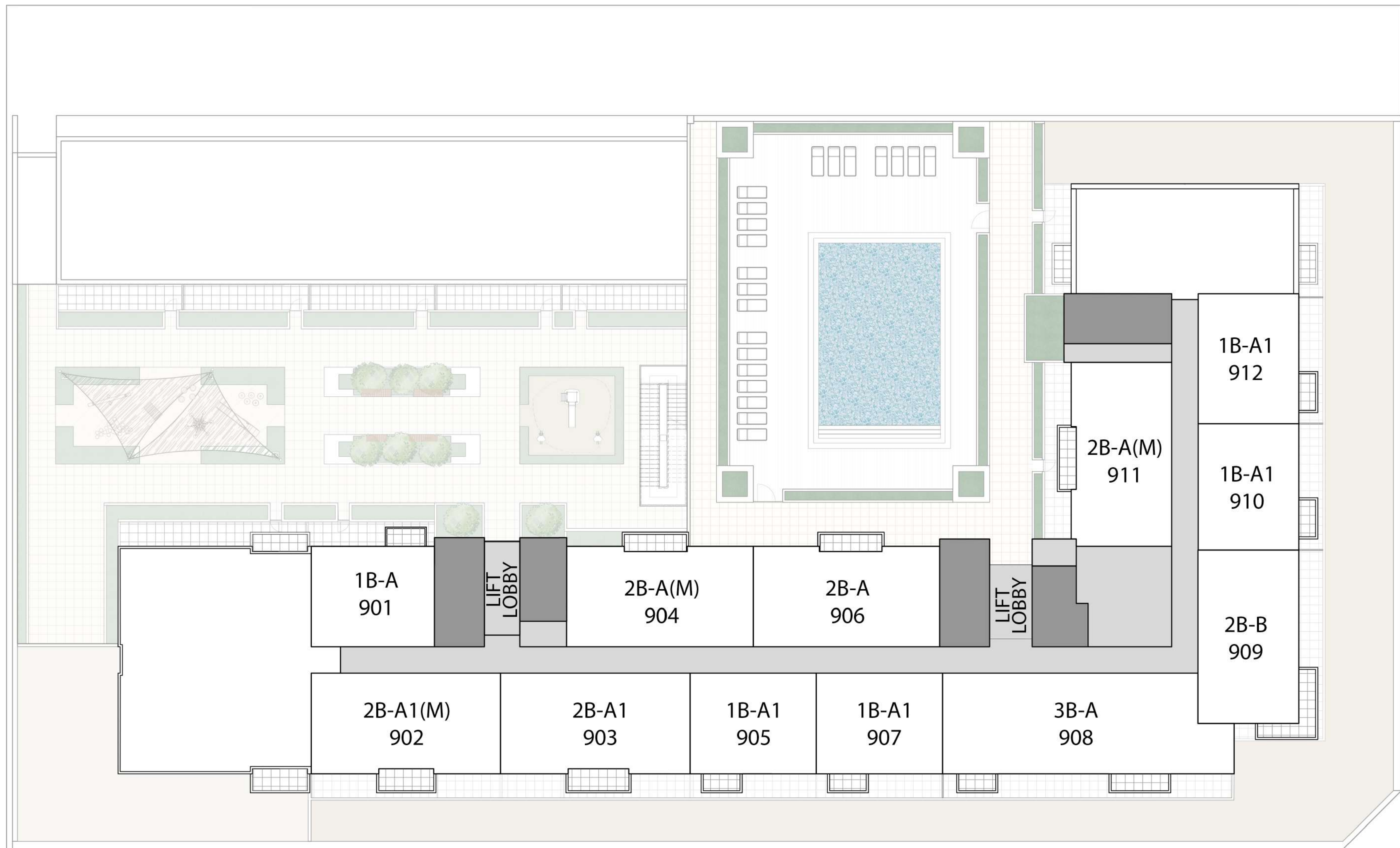


2<sup>ND</sup> TO 7<sup>TH</sup> FLOOR



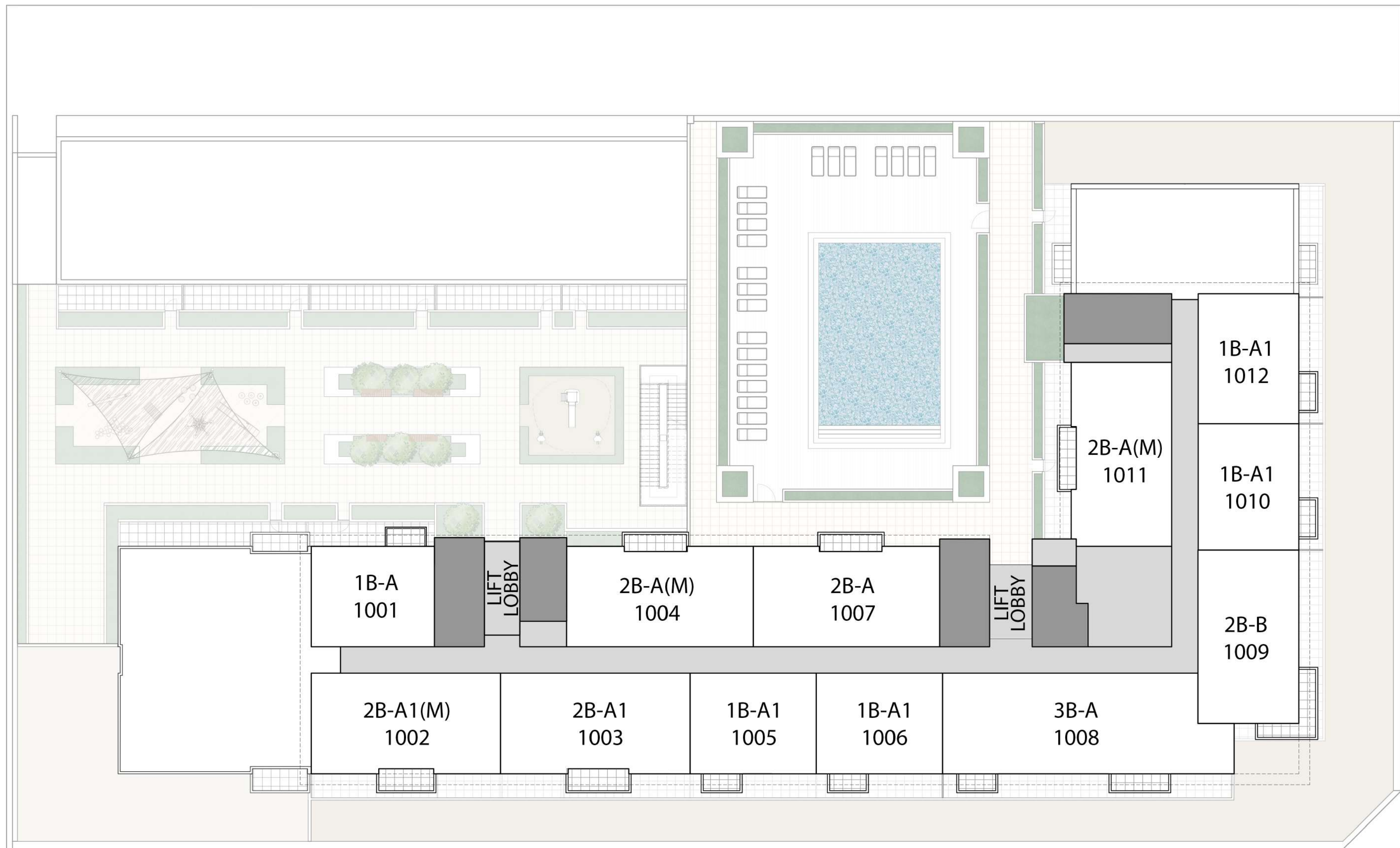


8<sup>TH</sup> FLOOR



9<sup>TH</sup> FLOOR





10<sup>TH</sup> FLOOR