



COVENTRY PLACE

A PROJECT BY



Live Elevated in Dubai Production City (IMPZ)
An exclusive collection of residences blending sleek
design, premium finishes, and unbeatable connectivity
in one of Dubai's most dynamic communities



Welcome to Coventry Place, where modern living meets timeless elegance. Our vision is to create a home that reflects your lifestyle, offering comfort, convenience, and exclusivity in every detail. This is more than an address; it's your new beginning in Dubai's thriving Production City.



About

Coventry Place is a boutique residential development of just 116 apartments, each thoughtfully designed to maximize space, natural light, and comfort. Every residence is a statement of style, with clean architectural lines, high-quality finishes, and a community atmosphere that redefines city living.

DEVELOPER *Profile*

Brought to you by a trusted name in UAE real estate, our team has delivered landmark projects across Dubai, known for innovation, quality, and timely handovers. Coventry Place is the latest expression of our commitment to creating spaces where people love to live.





COVENTRY
PLACE

https://maps.app.goo.gl/2kpASV3w4vqEJAqcA?g_st=awb



PRIME *Location*

Located in the heart of Dubai Production City, Coventry Place offers unmatched access to the city's most popular destinations. Whether it's work, leisure, or travel, you'll always be close to where you need to be.



TRAVEL TIMES

Chart

Dubai Marina / JBR – 15 mins
Downtown Dubai – 20 mins
DXB Airport – 20 mins
DWC Airport – 25 mins
City Centre Me'aisem – 2 mins
Dubai Hills Mall – 15 mins

NEIGHBORHOOD

Highlights

From shopping and dining to education and healthcare, everything you need is just minutes away. Explore nearby malls, enjoy fine dining at vibrant restaurants, and benefit from easy access to schools, hospitals, and entertainment venues.





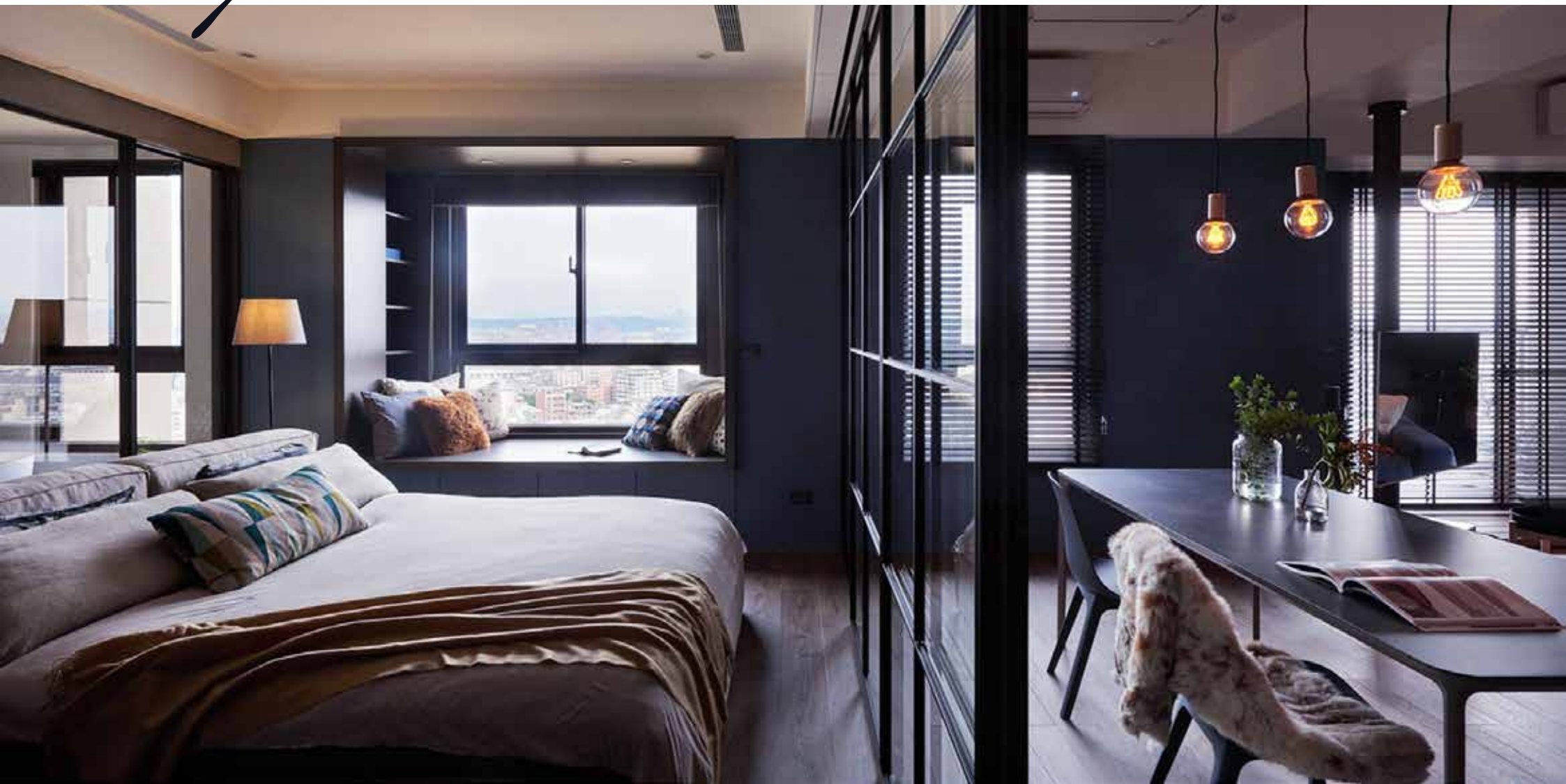
STYLISH RESIDENCES

Introduction

Coventry Place offers a range of thoughtfully designed residences, each tailored to different lifestyles. From compact and efficient studios to spacious two-bedroom layouts, every home combines style, functionality, and comfort.

Studios

Studios starting from 397 sq.ft at AED 666,960. Perfect for singles or young professionals seeking modern living in a prime location. Open layouts, premium finishes, and access to all building amenities.



1-BEDROOM

One-bedroom apartments from 717 sq.ft at AED 1,144,332. Ideal for couples or small families, with well-defined living spaces, elegant kitchens, and private balconies.

Apartments



2-BEDROOM

Two-bedroom apartments from 1,168 sq.ft at AED 1,716,960. Spacious layouts designed for family living, featuring generous bedrooms, large living areas, and premium fixtures.

Apartments



LIFE AT COVENTRY PLACE

Wake up to breathtaking rooftop views, spend your afternoons relaxing by the pool, and evenings entertaining friends in beautifully designed community spaces. Life here is about balance, comfort, and style.



PREMIUM AMENITIES *Overview*

From fitness to relaxation, Coventry Place provides world-class facilities for every lifestyle.




ROOFTOP SWIMMING

Pool

An infinity-edge rooftop pool offering panoramic views of Dubai's skyline. A perfect retreat for relaxation and leisure.



A woman with long blonde hair and a man are performing sit-ups on a black mat in a gym. The woman is in the foreground, wearing a black t-shirt and black leggings with white diagonal stripes. She has her hands behind her head and is looking to the side. The man is behind her, also in a black t-shirt, with his hands behind his head. In the background, there are several large black exercise balls on a rack, a blue and yellow resistance band, and some orange weights. The lighting is dim, creating a focused atmosphere.

FITNESS & WELLNESS

Spaces

A fully equipped gym with the latest machines, spacious workout areas, and a healthy living environment. Covered parking and 24/7 security add to your peace of mind.



CFS

COVENTRY
PLACE
by CFS



COVENTRY PLACE

A PROJECT BY

