

F L O O R P L A N



THE EIGHTY THREE

— DUBAI SOUTH —



THE EIGHTY THREE

DUBAI SOUTH



FIRST FLOOR

FLOOR PLAN 1. All dimensions are in imperial and metric, and measured from finish to finish excluding construction tolerances. 2. All materials, dimensions, and drawings are approximately only. 3. Information is subject to change without notice, at developer's absolute discretion. 4. Actual area may vary from the stated area. 5. Drawings not to scale. 6. All images used are for illustrative purposes only and do not represent the actual size, features, specifications, fittings, and furnishings. 7. The developer reserves the right to make revisions / alterations, at it's absolute discretion, without any liability whatsoever.



OKSA DEVELOPER



THE EIGHTY THREE

DUBAI SOUTH



SECOND FLOOR

FLOOR PLAN 1. All dimensions are in imperial and metric, and measured from finish to finish excluding construction tolerances. 2. All materials, dimensions, and drawings are approximately only. 3. Information is subject to change without notice, at developer's absolute discretion. 4. Actual area may vary from the stated area. 5. Drawings not to scale. 6. All images used are for illustrative purposes only and do not represent the actual size, features, specifications, fittings, and furnishings. 7. The developer reserves the right to make revisions / alterations, at it's absolute discretion, without any liability whatsoever.



OKSA DEVELOPER



THE EIGHTY THREE

DUBAI SOUTH



THIRD FLOOR

FLOOR PLAN 1. All dimensions are in imperial and metric, and measured from finish to finish excluding construction tolerances. 2. All materials, dimensions, and drawings are approximately only. 3. Information is subject to change without notice, at developer's absolute discretion. 4. Actual area may vary from the stated area. 5. Drawings not to scale. 6. All images used are for illustrative purposes only and do not represent the actual size, features, specifications, fittings, and furnishings. 7. The developer reserves the right to make revisions / alterations, at its absolute discretion, without any liability whatsoever.



OKSA DEVELOPER



THE EIGHTY THREE

DUBAI SOUTH



FOURTH FLOOR

FLOOR PLAN 1. All dimensions are in imperial and metric, and measured from finish to finish excluding construction tolerances. 2. All materials, dimensions, and drawings are approximately only. 3. Information is subject to change without notice, at developer's absolute discretion. 4. Actual area may vary from the stated area. 5. Drawings not to scale. 6. All images used are for illustrative purposes only and do not represent the actual size, features, specifications, fittings, and furnishings. 7. The developer reserves the right to make revisions / alterations, at it's absolute discretion, without any liability whatsoever.



OKSA DEVELOPER



THE EIGHTY THREE

DUBAI SOUTH



FIRST FLOOR

FLOOR PLAN 1. All dimensions are in imperial and metric, and measured from finish to finish excluding construction tolerances. 2. All materials, dimensions, and drawings are approximately only. 3. Information is subject to change without notice, at developer's absolute discretion. 4. Actual area may vary from the stated area. 5. Drawings not to scale. 6. All images used are for illustrative purposes only and do not represent the actual size, features, specifications, fittings, and furnishings. 7. The developer reserves the right to make revisions / alterations, at it's absolute discretion, without any liability whatsoever.



OKSA DEVELOPER



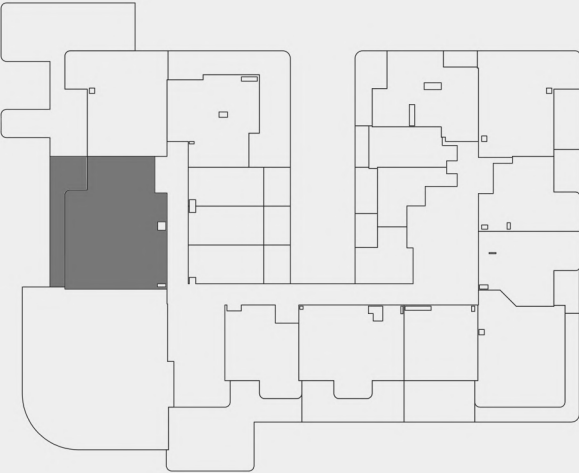
THE EIGHTY THREE

DUBAI SOUTH

2 B H K - FLAT NO 101

LEVEL -1

SUITE AREA	106.11 SQ.M	1142.16 SQ.FT
BALCONY AREA	24.69 SQ.M	265.76 SQ.FT
TOTAL AREA	130.80 SQ.M	1407.92 SQ.FT



KEY PLAN



OKSA DEVELOPER

UNIT PLAN : 1. All dimensions are in imperial and metric, and measured from finish to finish excluding construction tolerances. 2. All materials, dimesions, and drawings are approximately only. 3. Information is subject to change without notice, at developer's absolute discretion. 4. Actual area may vary from the stated area. 5. Drawings not to scale. 6. All images used are for illustrative purposes only and do not represent the actual size, features, specifications, fittings, and furnishings. 7. The developer reserves the right to make revisions / alterations, at it's absolute discretion, without any liability whatsoever.



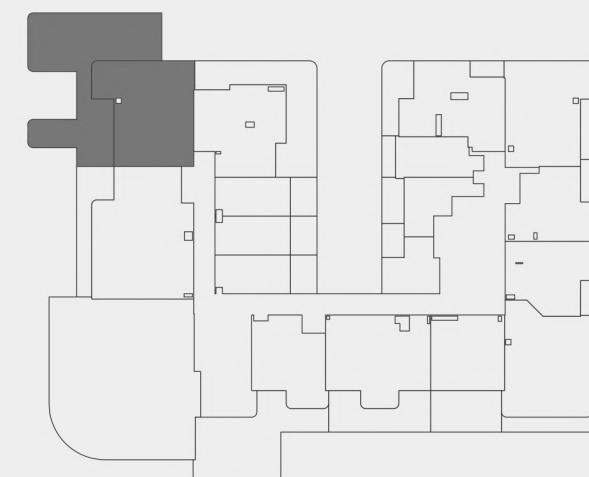
THE EIGHTY THREE

DUBAI SOUTH

2 BHK - FLAT NO 102

LEVEL -1

SUITE AREA	79.36 SQ.M	854.22 SQ.FT
BALCONY AREA	88.39 SQ.M	951.42 SQ.FT
TOTAL AREA	167.75 SQ.M	1805.65 SQ.FT



KEY PLAN



OKSA DEVELOPER

UNIT PLAN : 1. All dimensions are in imperial and metric, and measured from finish to finish excluding construction tolerances. 2. All materials, dimesions, and drawings are approximately only. 3. Information is subject to change without notice, at developer's absolute discretion. 4. Actual area may vary from the stated area. 5. Drawings not to scale. 6. All images used are for illustrative purposes only and do not represent the actual size, features, specifications, fittings, and furnishings. 7. The developer reserves the right to make revisions / alterations, at it's absolute discretion, without any liability whatsoever.



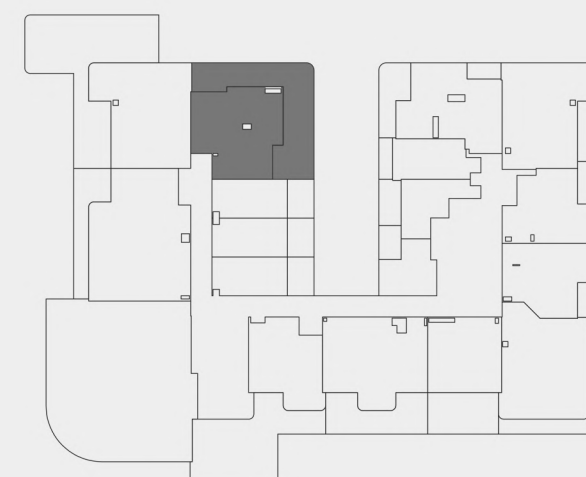
THE EIGHTY THREE

DUBAI SOUTH

2 BHK - FLAT NO 103

LEVEL -1

SUITE AREA	62.92 SQ.M	677.27 SQ.FT
BALCONY AREA	56.35 SQ.M	606.55 SQ.FT
TOTAL AREA	119.27 SQ.M	1283.81 SQ.FT



KEY PLAN



OKSA DEVELOPER

UNIT PLAN : 1. All dimensions are in imperial and metric, and measured from finish to finish excluding construction tolerances. 2. All materials, dimesions, and drawings are approximately only. 3. Information is subject to change without notice, at developer's absolute discretion. 4. Actual area may vary from the stated area. 5. Drawings not to scale. 6. All images used are for illustrative purposes only and do not represent the actual size, features, specifications, fittings, and furnishings. 7. The developer reserves the right to make revisions / alterations, at it's absolute discretion, without any liability whatsoever.

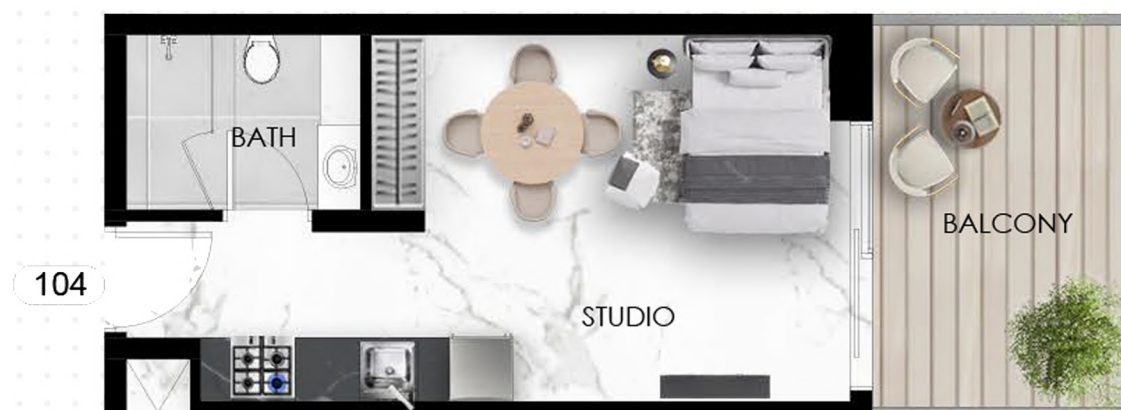


THE EIGHTY THREE

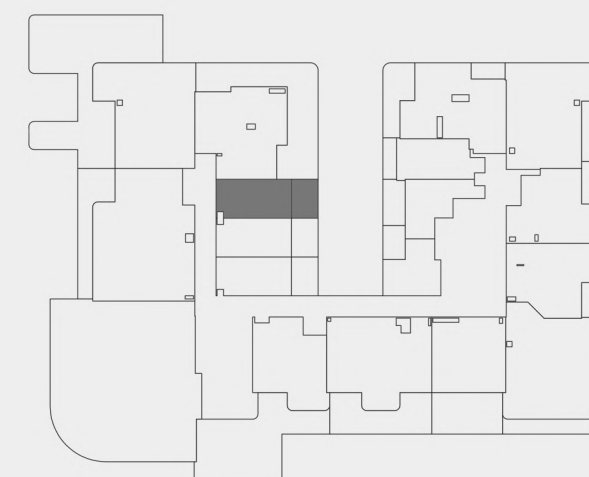
DUBAI SOUTH

STUDIO - FLAT NO 104

LEVEL -1



SUITE AREA	25.06 SQ.M	269.74 SQ.FT
BALCONY AREA	9.48 SQ.M	102.04 SQ.FT
TOTAL AREA	34.54 SQ.M	371.79 SQ.FT



KEY PLAN



OKSA DEVELOPER

UNIT PLAN : 1. All dimensions are in imperial and metric, and measured from finish to finish excluding construction tolerances. 2. All materials, dimesions, and drawings are approximately only. 3. Information is subject to change without notice, at developer's absolute discretion. 4. Actual area may vary from the stated area. 5. Drawings not to scale. 6. All images used are for illustrative purposes only and do not represent the actual size, features, specifications, fittings, and furnishings. 7. The developer reserves the right to make revisions / alterations, at it's absolute discretion, without any liability whatsoever.



THE EIGHTY THREE

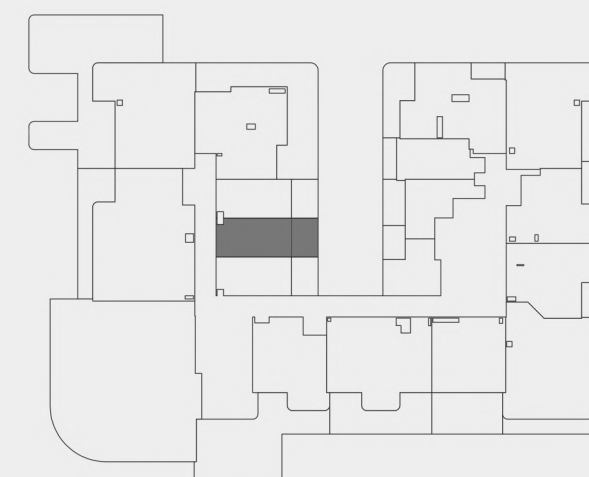
DUBAI SOUTH

STUDIO - FLAT NO 105

LEVEL -1



SUITE AREA	25.09 SQ.M	270.07 SQ.FT
BALCONY AREA	9.32 SQ.M	100.32 SQ.FT
TOTAL AREA	34.41 SQ.M	370.39 SQ.FT



KEY PLAN



OKSA DEVELOPER

UNIT PLAN : 1. All dimensions are in imperial and metric, and measured from finish to finish excluding construction tolerances. 2. All materials, dimesions, and drawings are approximately only. 3. Information is subject to change without notice, at developer's absolute discretion. 4. Actual area may vary from the stated area. 5. Drawings not to scale. 6. All images used are for illustrative purposes only and do not represent the actual size, features, specifications, fittings, and furnishings. 7. The developer reserves the right to make revisions / alterations, at it's absolute discretion, without any liability whatsoever.



THE EIGHTY THREE

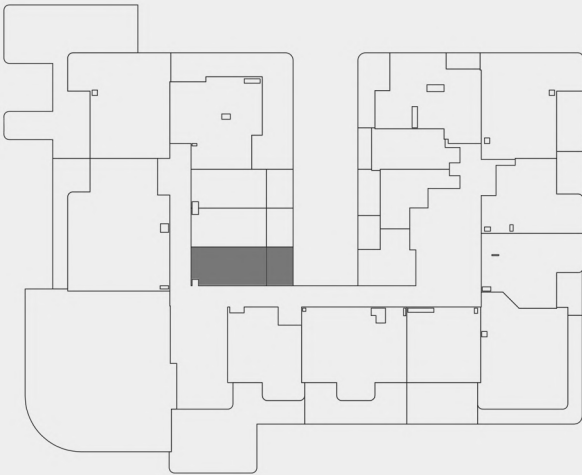
DUBAI SOUTH

STUDIO - FLAT NO 106

LEVEL -1



SUITE AREA	25.11 SQ.M	270.28 SQ.FT
BALCONY AREA	9.30 SQ.M	100.10 SQ.FT
TOTAL AREA	34.41 SQ.M	370.39 SQ.FT



KEY PLAN



OKSA DEVELOPER

UNIT PLAN : 1. All dimensions are in imperial and metric, and measured from finish to finish excluding construction tolerances. 2. All materials, dimesions, and drawings are approximately only. 3. Information is subject to change without notice, at developer's absolute discretion. 4. Actual area may vary from the stated area. 5. Drawings not to scale. 6. All images used are for illustrative purposes only and do not represent the actual size, features, specifications, fittings, and furnishings. 7. The developer reserves the right to make revisions / alterations, at it's absolute discretion, without any liability whatsoever.



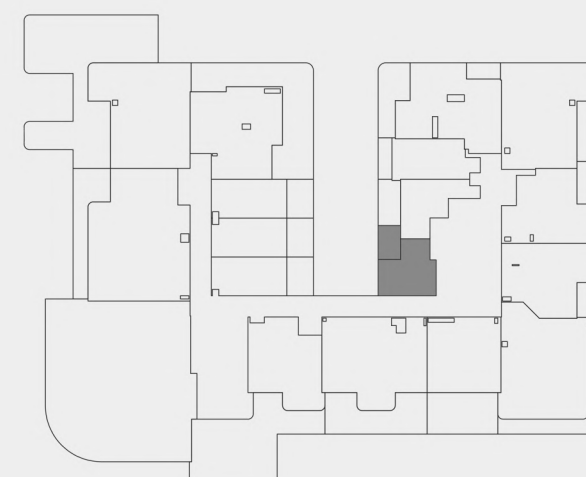
THE EIGHTY THREE

DUBAI SOUTH

STUDIO - FLAT NO 107

LEVEL -1

SUITE AREA	23.64 SQ.M	254.46 SQ.FT
BALCONY AREA	6.73 SQ.M	72.44 SQ.FT
TOTAL AREA	30.37 SQ.M	326.90 SQ.FT



KEY PLAN



OKSA DEVELOPER

UNIT PLAN : 1. All dimensions are in imperial and metric, and measured from finish to finish excluding construction tolerances. 2. All materials, dimesions, and drawings are approximately only. 3. Information is subject to change without notice, at developer's absolute discretion. 4. Actual area may vary from the stated area. 5. Drawings not to scale. 6. All images used are for illustrative purposes only and do not represent the actual size, features, specifications, fittings, and furnishings. 7. The developer reserves the right to make revisions / alterations, at it's absolute discretion, without any liability whatsoever.



THE EIGHTY THREE

DUBAI SOUTH

STUDIO - FLAT NO 108

LEVEL -1



SUITE AREA	26.17 SQ.M	281.69 SQ.FT
BALCONY AREA	8.90 SQ.M	95.80 SQ.FT
TOTAL AREA	35.07 SQ.M	377.49 SQ.FT



KEY PLAN



OKSA DEVELOPER

UNIT PLAN : 1. All dimensions are in imperial and metric, and measured from finish to finish excluding construction tolerances. 2. All materials, dimesions, and drawings are approximately only. 3. Information is subject to change without notice, at developer's absolute discretion. 4. Actual area may vary from the stated area. 5. Drawings not to scale. 6. All images used are for illustrative purposes only and do not represent the actual size, features, specifications, fittings, and furnishings. 7. The developer reserves the right to make revisions / alterations, at it's absolute discretion, without any liability whatsoever.



THE EIGHTY THREE

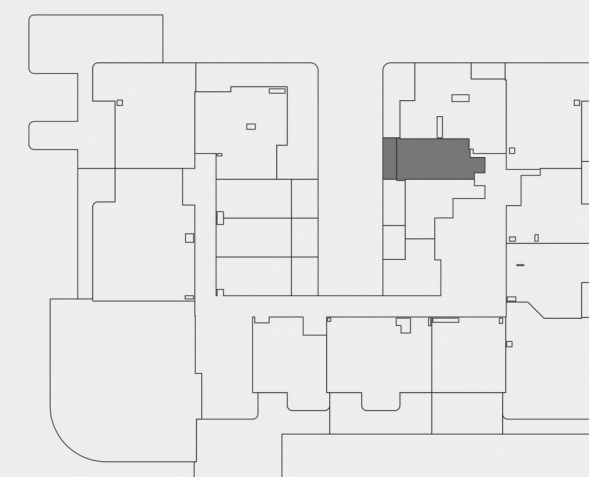
DUBAI SOUTH

STUDIO - FLAT NO 109

LEVEL -1



SUITE AREA	27.85 SQ.M	299.77 SQ.FT
BALCONY AREA	5.22 SQ.M	56.19 SQ.FT
TOTAL AREA	33.07 SQ.M	355.96 SQ.FT



KEY PLAN



OKSA DEVELOPER

UNIT PLAN : 1. All dimensions are in imperial and metric, and measured from finish to finish excluding construction tolerances. 2. All materials, dimesions, and drawings are approximately only. 3. Information is subject to change without notice, at developer's absolute discretion. 4. Actual area may vary from the stated area. 5. Drawings not to scale. 6. All images used are for illustrative purposes only and do not represent the actual size, features, specifications, fittings, and furnishings. 7. The developer reserves the right to make revisions / alterations, at it's absolute discretion, without any liability whatsoever.



THE EIGHTY THREE

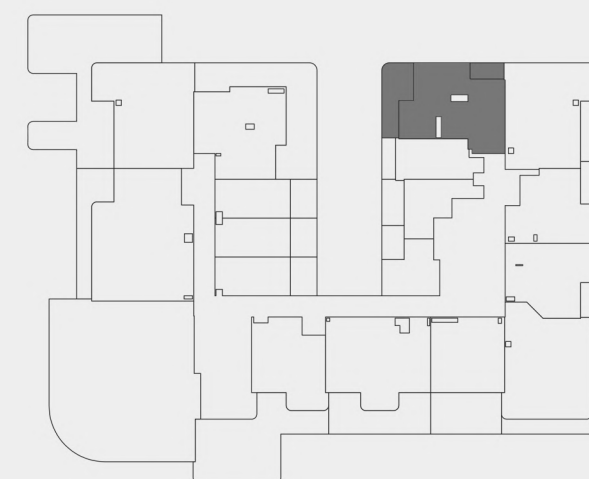
DUBAI SOUTH

2 BHK - FLAT NO 110

LEVEL -1



SUITE AREA	64.06 SQ.M	689.54 SQ.FT
BALCONY AREA	19.76 SQ.M	212.69 SQ.FT
TOTAL AREA	83.82 SQ.M	902.23 SQ.FT



KEY PLAN



OKSA DEVELOPER

UNIT PLAN : 1. All dimensions are in imperial and metric, and measured from finish to finish excluding construction tolerances. 2. All materials, dimesions, and drawings are approximately only. 3. Information is subject to change without notice, at developer's absolute discretion. 4. Actual area may vary from the stated area. 5. Drawings not to scale. 6. All images used are for illustrative purposes only and do not represent the actual size, features, specifications, fittings, and furnishings. 7. The developer reserves the right to make revisions / alterations, at it's absolute discretion, without any liability whatsoever.



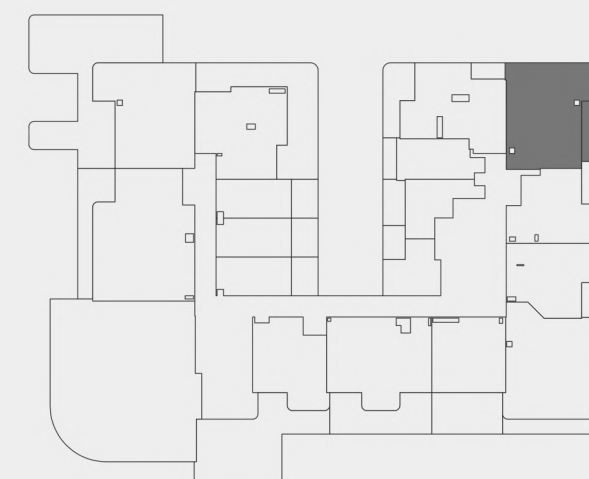
THE EIGHTY THREE

DUBAI SOUTH

2 BHK - FLAT NO 111

LEVEL -1

SUITE AREA	76.37 SQ.M	822.04 SQ.FT
BALCONY AREA	14.22 SQ.M	153.06 SQ.FT
TOTAL AREA	90.59 SQ.M	975.10 SQ.FT



KEY PLAN



OKSA DEVELOPER

UNIT PLAN : 1. All dimensions are in imperial and metric, and measured from finish to finish excluding construction tolerances. 2. All materials, dimesions, and drawings are approximately only. 3. Information is subject to change without notice, at developer's absolute discretion. 4. Actual area may vary from the stated area. 5. Drawings not to scale. 6. All images used are for illustrative purposes only and do not represent the actual size, features, specifications, fittings, and furnishings. 7. The developer reserves the right to make revisions / alterations, at it's absolute discretion, without any liability whatsoever.



THE EIGHTY THREE

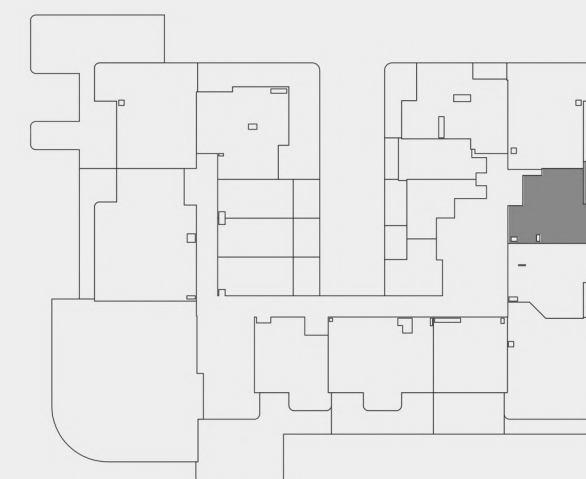
DUBAI SOUTH

1 BHK - FLAT NO 112

LEVEL -1



SUITE AREA	51.39 SQ.M	553.16 SQ.FT
BALCONY AREA	10.73 SQ.M	115.50 SQ.FT
TOTAL AREA	62.12 SQ.M	668.65 SQ.FT



KEY PLAN

UNIT PLAN : 1. All dimensions are in imperial and metric, and measured from finish to finish excluding construction tolerances. 2. All materials, dimesions, and drawings are approximately only. 3. Information is subject to change without notice, at developer's absolute discretion. 4. Actual area may vary from the stated area. 5. Drawings not to scale. 6. All images used are for illustrative purposes only and do not represent the actual size, features, specifications, fittings, and furnishings. 7. The developer reserves the right to make revisions / alterations, at it's absolute discretion, without any liability whatsoever.



OKSA DEVELOPER



THE EIGHTY THREE

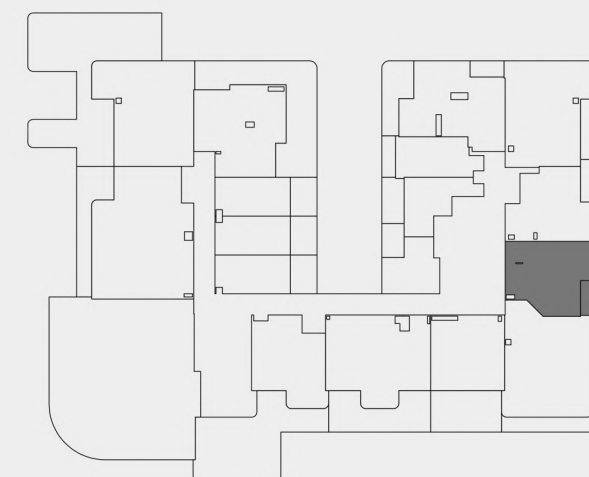
DUBAI SOUTH

1 BHK - FLAT NO 113

LEVEL -1



SUITE AREA	53.77 SQ.M	578.78 SQ.FT
BALCONY AREA	9.43 SQ.M	101.50 SQ.FT
TOTAL AREA	63.20 SQ.M	680.28 SQ.FT



KEY PLAN



OKSA DEVELOPER

UNIT PLAN : 1. All dimensions are in imperial and metric, and measured from finish to finish excluding construction tolerances. 2. All materials, dimesions, and drawings are approximately only. 3. Information is subject to change without notice, at developer's absolute discretion. 4. Actual area may vary from the stated area. 5. Drawings not to scale. 6. All images used are for illustrative purposes only and do not represent the actual size, features, specifications, fittings, and furnishings. 7. The developer reserves the right to make revisions / alterations, at it's absolute discretion, without any liability whatsoever.



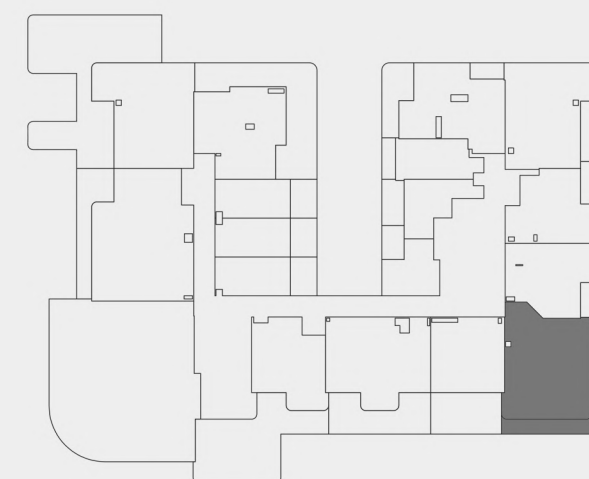
THE EIGHTY THREE

DUBAI SOUTH

2 BHK - FLAT NO 114

LEVEL -1

SUITE AREA	80.26 SQ.M	863.91 SQ.FT
BALCONY AREA	25.89 SQ.M	278.68 SQ.FT
TOTAL AREA	106.15 SQ.M	1142.59 SQ.FT



KEY PLAN



OKSA DEVELOPER

UNIT PLAN : 1. All dimensions are in imperial and metric, and measured from finish to finish excluding construction tolerances. 2. All materials, dimesions, and drawings are approximately only. 3. Information is subject to change without notice, at developer's absolute discretion. 4. Actual area may vary from the stated area. 5. Drawings not to scale. 6. All images used are for illustrative purposes only and do not represent the actual size, features, specifications, fittings, and furnishings. 7. The developer reserves the right to make revisions / alterations, at it's absolute discretion, without any liability whatsoever.



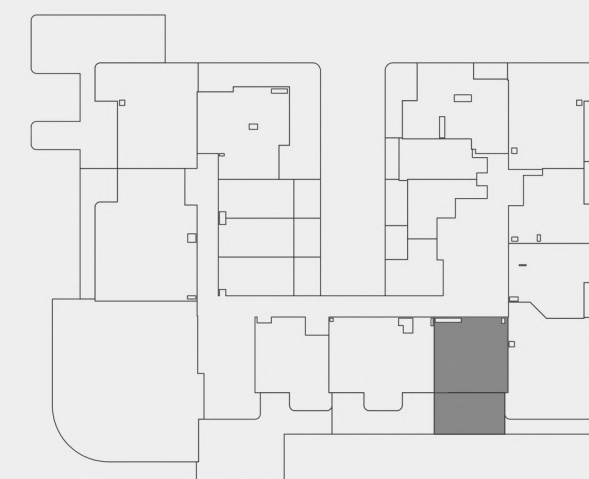
THE EIGHTY THREE

DUBAI SOUTH

1 BHK - FLAT NO 115

LEVEL -1

SUITE AREA	46.83 SQ.M	504.07 SQ.FT
BALCONY AREA	27.00 SQ.M	290.63 SQ.FT
TOTAL AREA	73.83 SQ.M	794.70 SQ.FT



KEY PLAN



OKSA DEVELOPER

UNIT PLAN : 1. All dimensions are in imperial and metric, and measured from finish to finish excluding construction tolerances. 2. All materials, dimesions, and drawings are approximately only. 3. Information is subject to change without notice, at developer's absolute discretion. 4. Actual area may vary from the stated area. 5. Drawings not to scale. 6. All images used are for illustrative purposes only and do not represent the actual size, features, specifications, fittings, and furnishings. 7. The developer reserves the right to make revisions / alterations, at it's absolute discretion, without any liability whatsoever.



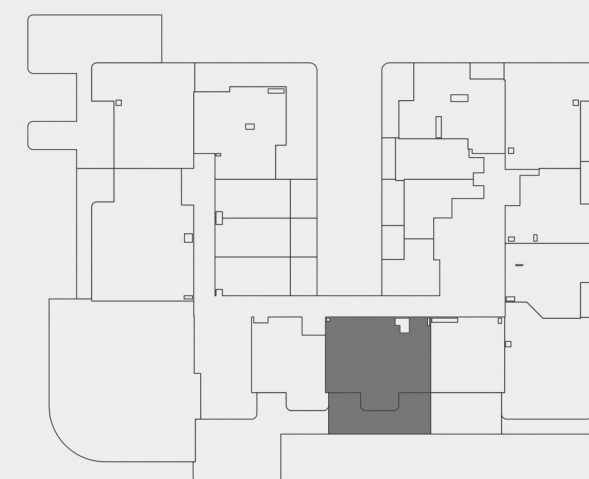
THE EIGHTY THREE

DUBAI SOUTH

2 B H K - FLAT NO 116

LEVEL -1

SUITE AREA	72.24 SQ.M	777.58 SQ.FT
BALCONY AREA	33.07 SQ.M	355.96 SQ.FT
TOTAL AREA	105.31 SQ.M	1133.55 SQ.FT



KEY PLAN



OKSA DEVELOPER

UNIT PLAN : 1. All dimensions are in imperial and metric, and measured from finish to finish excluding construction tolerances. 2. All materials, dimesions, and drawings are approximately only. 3. Information is subject to change without notice, at developer's absolute discretion. 4. Actual area may vary from the stated area. 5. Drawings not to scale. 6. All images used are for illustrative purposes only and do not represent the actual size, features, specifications, fittings, and furnishings. 7. The developer reserves the right to make revisions / alterations, at it's absolute discretion, without any liability whatsoever.



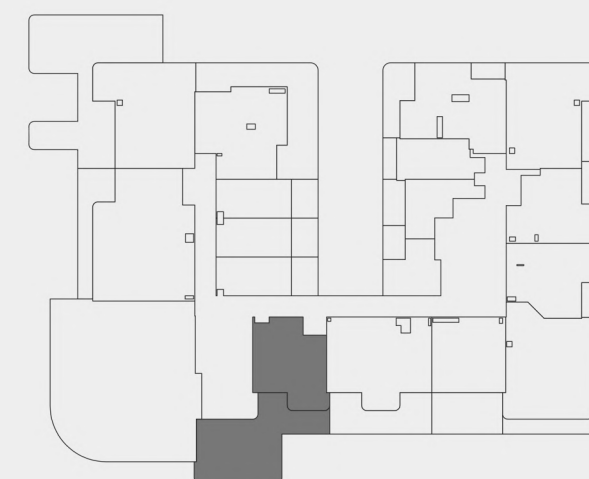
THE EIGHTY THREE

DUBAI SOUTH

1 BHK - FLAT NO 117

LEVEL -1

SUITE AREA	49.42 SQ.M	531.95 SQ.FT
BALCONY AREA	66.48 SQ.M	715.58 SQ.FT
TOTAL AREA	115.90 SQ.M	1247.54 SQ.FT



KEY PLAN



OKSA DEVELOPER

UNIT PLAN : 1. All dimensions are in imperial and metric, and measured from finish to finish excluding construction tolerances. 2. All materials, dimesions, and drawings are approximately only. 3. Information is subject to change without notice, at developer's absolute discretion. 4. Actual area may vary from the stated area. 5. Drawings not to scale. 6. All images used are for illustrative purposes only and do not represent the actual size, features, specifications, fittings, and furnishings. 7. The developer reserves the right to make revisions / alterations, at it's absolute discretion, without any liability whatsoever.



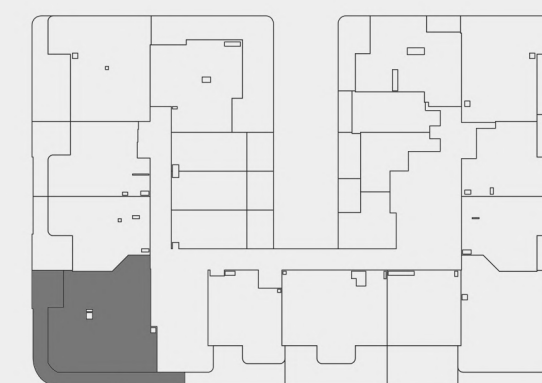
THE EIGHTY THREE

DUBAI SOUTH

2 BHK - FLAT NO 201

LEVEL -2

SUITE AREA	89.99 SQ.M	968.64 SQ.FT
BALCONY AREA	38.99 SQ.M	419.68 SQ.FT
TOTAL AREA	128.98 SQ.M	1388.33 SQ.FT



KEY PLAN



OKSA DEVELOPER

UNIT PLAN : 1. All dimensions are in imperial and metric, and measured from finish to finish excluding construction tolerances. 2. All materials, dimesions, and drawings are approximately only. 3. Information is subject to change without notice, at developer's absolute discretion. 4. Actual area may vary from the stated area. 5. Drawings not to scale. 6. All images used are for illustrative purposes only and do not represent the actual size, features, specifications, fittings, and furnishings. 7. The developer reserves the right to make revisions / alterations, at it's absolute discretion, without any liability whatsoever.



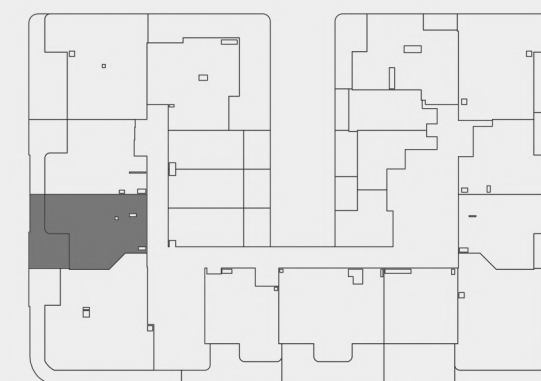
THE EIGHTY THREE

DUBAI SOUTH

1 BHK - FLAT NO 202

LEVEL -2

SUITE AREA	53.89 SQ.M	580.07 SQ.FT
BALCONY AREA	17.96 SQ.M	193.32 SQ.FT
TOTAL AREA	71.85 SQ.M	773.39 SQ.FT



KEY PLAN



OKSA DEVELOPER

UNIT PLAN : 1. All dimensions are in imperial and metric, and measured from finish to finish excluding construction tolerances. 2. All materials, dimesions, and drawings are approximately only. 3. Information is subject to change without notice, at developer's absolute discretion. 4. Actual area may vary from the stated area. 5. Drawings not to scale. 6. All images used are for illustrative purposes only and do not represent the actual size, features, specifications, fittings, and furnishings. 7. The developer reserves the right to make revisions / alterations, at it's absolute discretion, without any liability whatsoever.



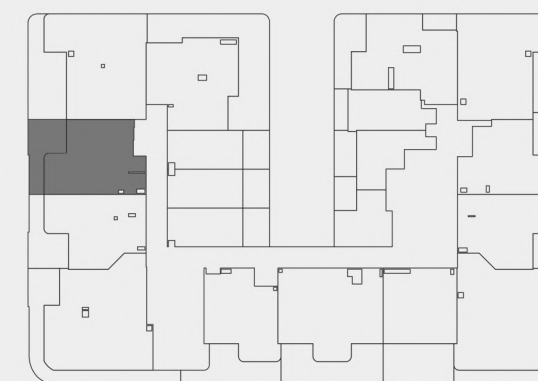
THE EIGHTY THREE

DUBAI SOUTH

1 BHK - FLAT NO 203

LEVEL -2

SUITE AREA	55.32 SQ.M	595.46 SQ.FT
BALCONY AREA	17.28 SQ.M	186.00 SQ.FT
TOTAL AREA	72.60 SQ.M	781.46 SQ.FT



KEY PLAN



OKSA DEVELOPER

UNIT PLAN : 1. All dimensions are in imperial and metric, and measured from finish to finish excluding construction tolerances. 2. All materials, dimesions, and drawings are approximately only. 3. Information is subject to change without notice, at developer's absolute discretion. 4. Actual area may vary from the stated area. 5. Drawings not to scale. 6. All images used are for illustrative purposes only and do not represent the actual size, features, specifications, fittings, and furnishings. 7. The developer reserves the right to make revisions / alterations, at it's absolute discretion, without any liability whatsoever.



THE EIGHTY THREE

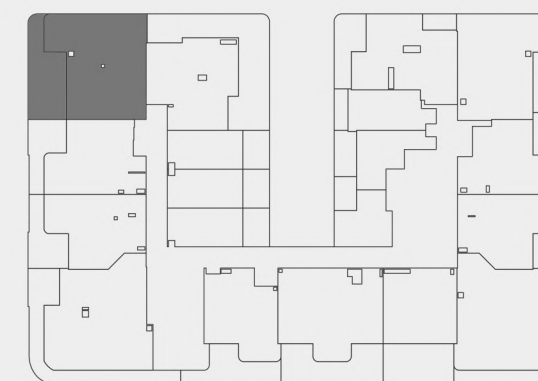
DUBAI SOUTH

2 BHK - FLAT NO 204

LEVEL -2



SUITE AREA	79.36 SQ.M	854.22 SQ.FT
BALCONY AREA	28.58 SQ.M	307.63 SQ.FT
TOTAL AREA	107.94 SQ.M	1161.86 SQ.FT



KEY PLAN



OKSA DEVELOPER

UNIT PLAN : 1. All dimensions are in imperial and metric, and measured from finish to finish excluding construction tolerances. 2. All materials, dimesions, and drawings are approximately only. 3. Information is subject to change without notice, at developer's absolute discretion. 4. Actual area may vary from the stated area. 5. Drawings not to scale. 6. All images used are for illustrative purposes only and do not represent the actual size, features, specifications, fittings, and furnishings. 7. The developer reserves the right to make revisions / alterations, at it's absolute discretion, without any liability whatsoever.



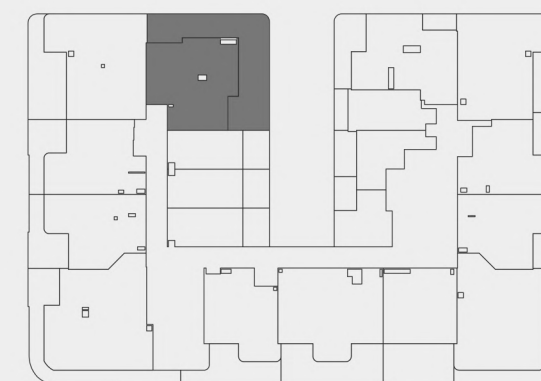
THE EIGHTY THREE

DUBAI SOUTH

2 BHK - FLAT NO 205

LEVEL -2

SUITE AREA	62.92 SQ.M	677.27 SQ.FT
BALCONY AREA	56.13 SQ.M	604.18 SQ.FT
TOTAL AREA	119.05 SQ.M	1281.44 SQ.FT



KEY PLAN



OKSA DEVELOPER

UNIT PLAN : 1. All dimensions are in imperial and metric, and measured from finish to finish excluding construction tolerances. 2. All materials, dimesions, and drawings are approximately only. 3. Information is subject to change without notice, at developer's absolute discretion. 4. Actual area may vary from the stated area. 5. Drawings not to scale. 6. All images used are for illustrative purposes only and do not represent the actual size, features, specifications, fittings, and furnishings. 7. The developer reserves the right to make revisions / alterations, at it's absolute discretion, without any liability whatsoever.

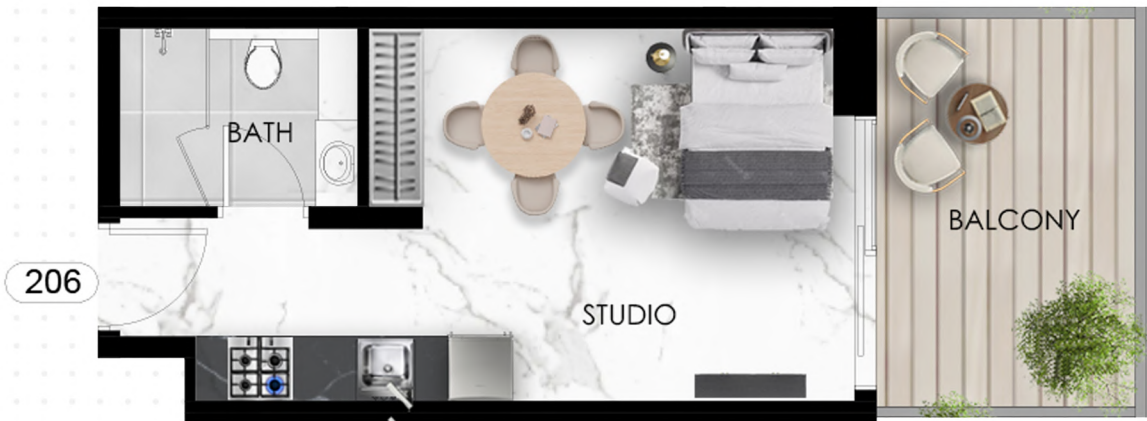


THE EIGHTY THREE

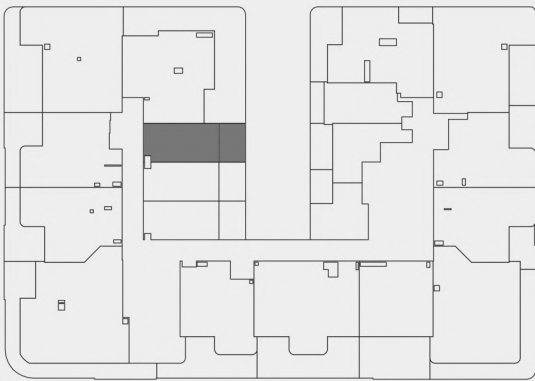
DUBAI SOUTH

STUDIO - FLAT NO 206

LEVEL -2



SUITE AREA	25.06 SQ.M	269.74 SQ.FT
BALCONY AREA	9.48 SQ.M	102.04 SQ.FT
TOTAL AREA	34.54 SQ.M	371.79 SQ.FT



KEY PLAN



OKSA DEVELOPER

UNIT PLAN : 1. All dimensions are in imperial and metric, and measured from finish to finish excluding construction tolerances. 2. All materials, dimesions, and drawings are approximately only. 3. Information is subject to change without notice, at developer's absolute discretion. 4. Actual area may vary from the stated area. 5. Drawings not to scale. 6. All images used are for illustrative purposes only and do not represent the actual size, features, specifications, fittings, and furnishings. 7. The developer reserves the right to make revisions / alterations, at it's absolute discretion, without any liability whatsoever.



THE EIGHTY THREE

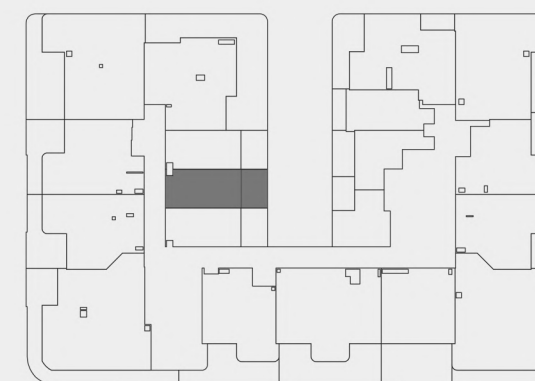
DUBAI SOUTH

STUDIO - FLAT NO 207

LEVEL -2



SUITE AREA	25.09 SQ.M	270.07 SQ.FT
BALCONY AREA	9.32 SQ.M	100.32 SQ.FT
TOTAL AREA	34.41 SQ.M	370.39 SQ.FT



KEY PLAN



OKSA DEVELOPER

UNIT PLAN : 1. All dimensions are in imperial and metric, and measured from finish to finish excluding construction tolerances. 2. All materials, dimesions, and drawings are approximately only. 3. Information is subject to change without notice, at developer's absolute discretion. 4. Actual area may vary from the stated area. 5. Drawings not to scale. 6. All images used are for illustrative purposes only and do not represent the actual size, features, specifications, fittings, and furnishings. 7. The developer reserves the right to make revisions / alterations, at it's absolute discretion, without any liability whatsoever.



THE EIGHTY THREE

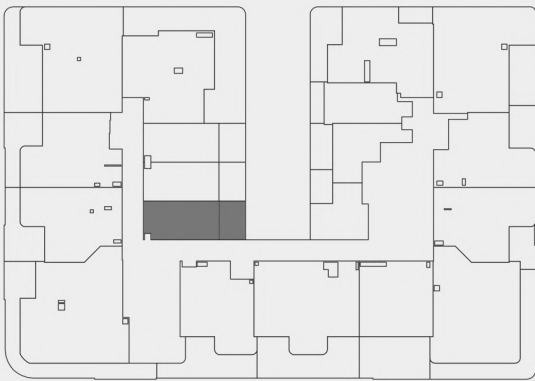
DUBAI SOUTH

STUDIO - FLAT NO 208

LEVEL -2



SUITE AREA	25.11 SQ.M	270.28 SQ.FT
BALCONY AREA	9.30 SQ.M	100.10 SQ.FT
TOTAL AREA	34.41 SQ.M	370.39 SQ.FT



KEY PLAN



OKSA DEVELOPER

UNIT PLAN : 1. All dimensions are in imperial and metric, and measured from finish to finish excluding construction tolerances. 2. All materials, dimesions, and drawings are approximately only. 3. Information is subject to change without notice, at developer's absolute discretion. 4. Actual area may vary from the stated area. 5. Drawings not to scale. 6. All images used are for illustrative purposes only and do not represent the actual size, features, specifications, fittings, and furnishings. 7. The developer reserves the right to make revisions / alterations, at it's absolute discretion, without any liability whatsoever.



THE EIGHTY THREE

DUBAI SOUTH

STUDIO - FLAT NO 209

LEVEL -2

SUITE AREA	23.64 SQ.M	254.46 SQ.FT
BALCONY AREA	6.73 SQ.M	72.44 SQ.FT
TOTAL AREA	30.37 SQ.M	326.90 SQ.FT



KEY PLAN



OKSA DEVELOPER

UNIT PLAN : 1. All dimensions are in imperial and metric, and measured from finish to finish excluding construction tolerances. 2. All materials, dimesions, and drawings are approximately only. 3. Information is subject to change without notice, at developer's absolute discretion. 4. Actual area may vary from the stated area. 5. Drawings not to scale. 6. All images used are for illustrative purposes only and do not represent the actual size, features, specifications, fittings, and furnishings. 7. The developer reserves the right to make revisions / alterations, at it's absolute discretion, without any liability whatsoever.

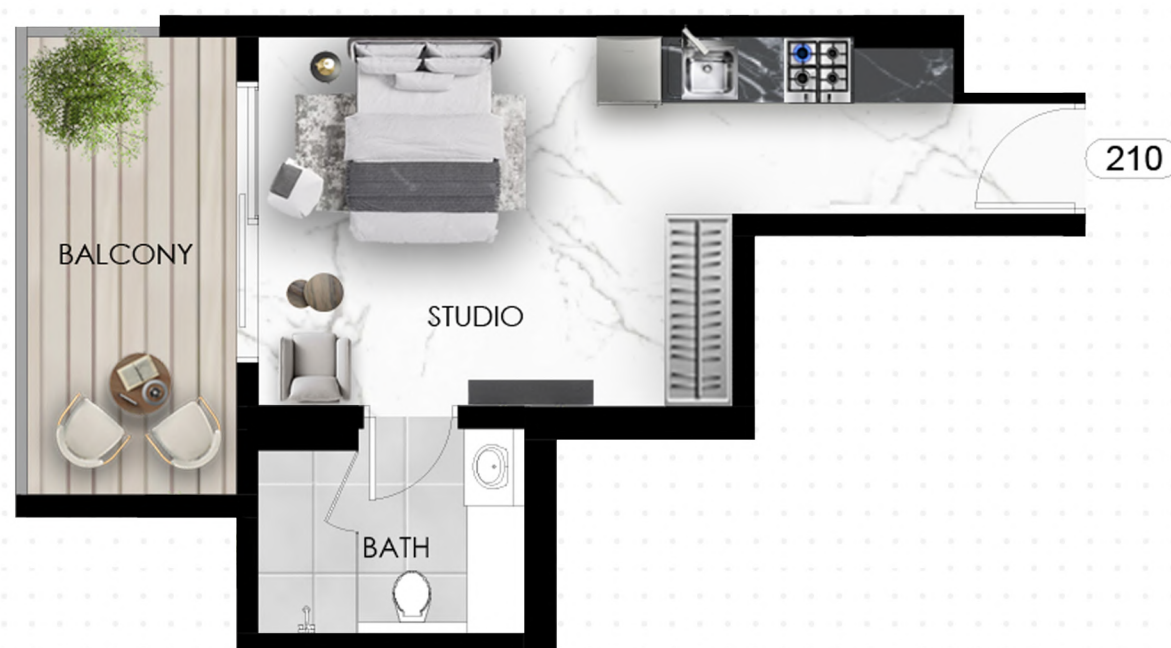


THE EIGHTY THREE

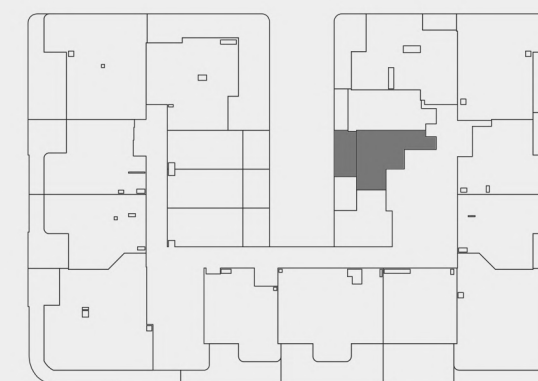
DUBAI SOUTH

STUDIO - FLAT NO 210

LEVEL -2



SUITE AREA	26.17 SQ.M	281.69 SQ.FT
BALCONY AREA	8.90 SQ.M	95.80 SQ.FT
TOTAL AREA	35.07 SQ.M	377.49 SQ.FT



KEY PLAN



OKSA DEVELOPER

UNIT PLAN : 1. All dimensions are in imperial and metric, and measured from finish to finish excluding construction tolerances. 2. All materials, dimesions, and drawings are approximately only. 3. Information is subject to change without notice, at developer's absolute discretion. 4. Actual area may vary from the stated area. 5. Drawings not to scale. 6. All images used are for illustrative purposes only and do not represent the actual size, features, specifications, fittings, and furnishings. 7. The developer reserves the right to make revisions / alterations, at it's absolute discretion, without any liability whatsoever.



THE EIGHTY THREE

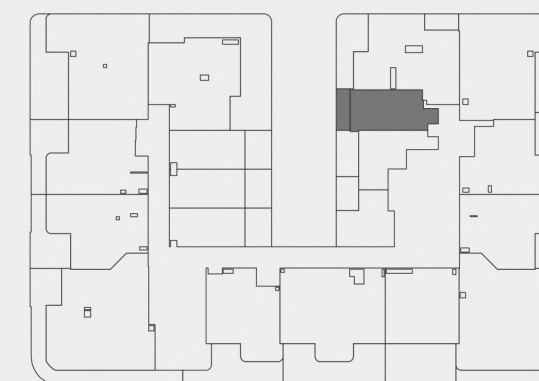
DUBAI SOUTH

STUDIO - FLAT NO 211

LEVEL -2



SUITE AREA	27.85 SQ.M	299.77 SQ.FT
BALCONY AREA	5.22 SQ.M	56.19 SQ.FT
TOTAL AREA	33.07 SQ.M	355.96 SQ.FT



KEY PLAN



OKSA DEVELOPER

UNIT PLAN : 1. All dimensions are in imperial and metric, and measured from finish to finish excluding construction tolerances. 2. All materials, dimesions, and drawings are approximately only. 3. Information is subject to change without notice, at developer's absolute discretion. 4. Actual area may vary from the stated area. 5. Drawings not to scale. 6. All images used are for illustrative purposes only and do not represent the actual size, features, specifications, fittings, and furnishings. 7. The developer reserves the right to make revisions / alterations, at it's absolute discretion, without any liability whatsoever.



THE EIGHTY THREE

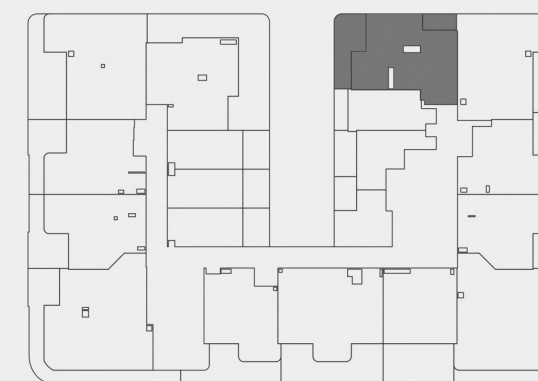
DUBAI SOUTH

2 BHK - FLAT NO 212

LEVEL -2



SUITE AREA	64.04 SQ.M	689.54 SQ.FT
BALCONY AREA	19.76 SQ.M	212.69 SQ.FT
TOTAL AREA	83.82 SQ.M	902.23 SQ.FT



KEY PLAN



OKSA DEVELOPER

UNIT PLAN : 1. All dimensions are in imperial and metric, and measured from finish to finish excluding construction tolerances. 2. All materials, dimesions, and drawings are approximately only. 3. Information is subject to change without notice, at developer's absolute discretion. 4. Actual area may vary from the stated area. 5. Drawings not to scale. 6. All images used are for illustrative purposes only and do not represent the actual size, features, specifications, fittings, and furnishings. 7. The developer reserves the right to make revisions / alterations, at it's absolute discretion, without any liability whatsoever.



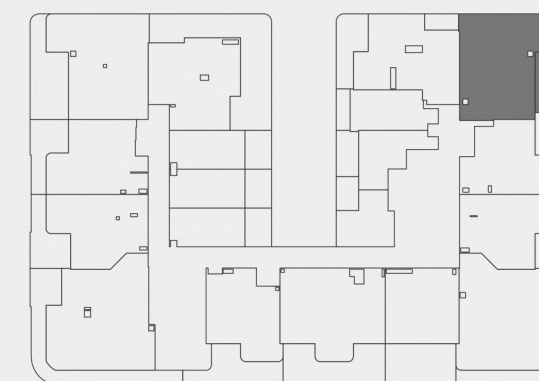
THE EIGHTY THREE

DUBAI SOUTH

2 BHK - FLAT NO 213

LEVEL -2

SUITE AREA	76.37 SQ.M	822.04 SQ.FT
BALCONY AREA	14.22 SQ.M	153.06 SQ.FT
TOTAL AREA	90.59 SQ.M	975.10 SQ.FT



KEY PLAN



OKSA DEVELOPER

UNIT PLAN : 1. All dimensions are in imperial and metric, and measured from finish to finish excluding construction tolerances. 2. All materials, dimesions, and drawings are approximately only. 3. Information is subject to change without notice, at developer's absolute discretion. 4. Actual area may vary from the stated area. 5. Drawings not to scale. 6. All images used are for illustrative purposes only and do not represent the actual size, features, specifications, fittings, and furnishings. 7. The developer reserves the right to make revisions / alterations, at it's absolute discretion, without any liability whatsoever.



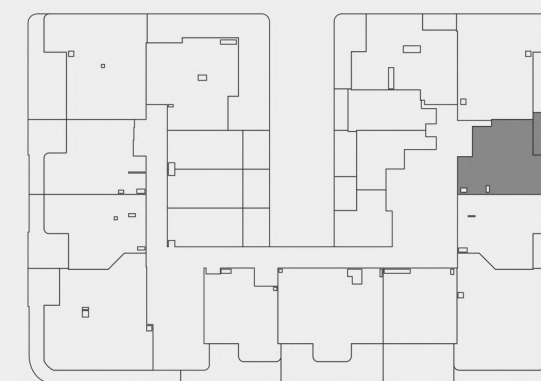
THE EIGHTY THREE

DUBAI SOUTH

1 BHK - FLAT NO 214

LEVEL -2

SUITE AREA	51.39 SQ.M	553.16 SQ.FT
BALCONY AREA	10.73 SQ.M	115.50 SQ.FT
TOTAL AREA	62.12 SQ.M	668.65 SQ.FT



KEY PLAN



OKSA DEVELOPER

UNIT PLAN : 1. All dimensions are in imperial and metric, and measured from finish to finish excluding construction tolerances. 2. All materials, dimesions, and drawings are approximately only. 3. Information is subject to change without notice, at developer's absolute discretion. 4. Actual area may vary from the stated area. 5. Drawings not to scale. 6. All images used are for illustrative purposes only and do not represent the actual size, features, specifications, fittings, and furnishings. 7. The developer reserves the right to make revisions / alterations, at it's absolute discretion, without any liability whatsoever.



THE EIGHTY THREE

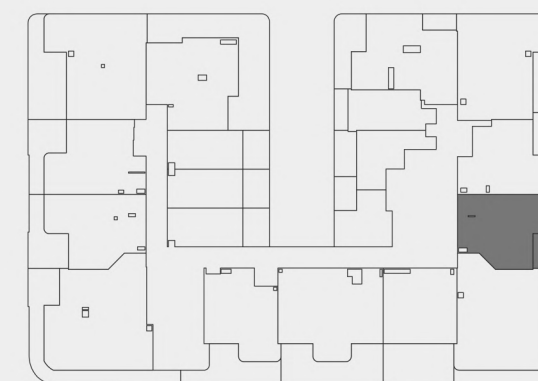
DUBAI SOUTH

1 BHK - FLAT NO 215

LEVEL -2



SUITE AREA	53.77 SQ.M	578.78 SQ.FT
BALCONY AREA	10.30 SQ.M	110.87 SQ.FT
TOTAL AREA	64.07 SQ.M	689.64 SQ.FT



KEY PLAN



OKSA DEVELOPER

UNIT PLAN : 1. All dimensions are in imperial and metric, and measured from finish to finish excluding construction tolerances. 2. All materials, dimesions, and drawings are approximately only. 3. Information is subject to change without notice, at developer's absolute discretion. 4. Actual area may vary from the stated area. 5. Drawings not to scale. 6. All images used are for illustrative purposes only and do not represent the actual size, features, specifications, fittings, and furnishings. 7. The developer reserves the right to make revisions / alterations, at it's absolute discretion, without any liability whatsoever.



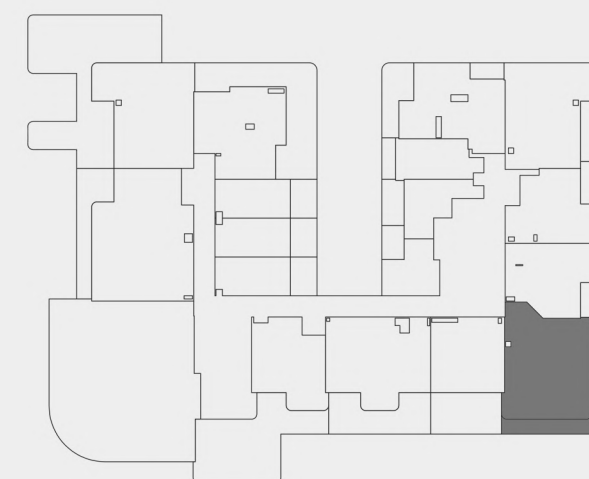
THE EIGHTY THREE

DUBAI SOUTH

2 BHK - FLAT NO 216

LEVEL -2

SUITE AREA	80.26 SQ.M	863.91 SQ.FT
BALCONY AREA	27.85 SQ.M	299.77 SQ.FT
TOTAL AREA	108.11 SQ.M	1163.69 SQ.FT



KEY PLAN



OKSA DEVELOPER

UNIT PLAN : 1. All dimensions are in imperial and metric, and measured from finish to finish excluding construction tolerances. 2. All materials, dimesions, and drawings are approximately only. 3. Information is subject to change without notice, at developer's absolute discretion. 4. Actual area may vary from the stated area. 5. Drawings not to scale. 6. All images used are for illustrative purposes only and do not represent the actual size, features, specifications, fittings, and furnishings. 7. The developer reserves the right to make revisions / alterations, at it's absolute discretion, without any liability whatsoever.



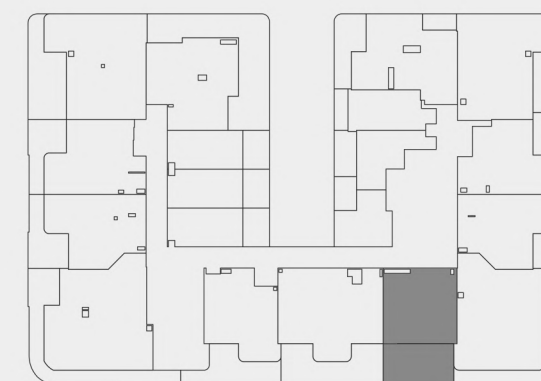
THE EIGHTY THREE

DUBAI SOUTH

1 BHK - FLAT NO 217

LEVEL -2

SUITE AREA	46.83 SQ.M	504.07 SQ.FT
BALCONY AREA	27.31 SQ.M	293.96 SQ.FT
TOTAL AREA	74.14 SQ.M	798.04 SQ.FT



KEY PLAN



OKSA DEVELOPER

UNIT PLAN : 1. All dimensions are in imperial and metric, and measured from finish to finish excluding construction tolerances. 2. All materials, dimesions, and drawings are approximately only. 3. Information is subject to change without notice, at developer's absolute discretion. 4. Actual area may vary from the stated area. 5. Drawings not to scale. 6. All images used are for illustrative purposes only and do not represent the actual size, features, specifications, fittings, and furnishings. 7. The developer reserves the right to make revisions / alterations, at it's absolute discretion, without any liability whatsoever.



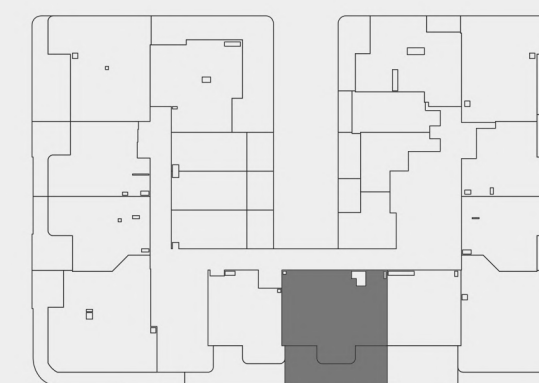
THE EIGHTY THREE

DUBAI SOUTH

2 BHK - FLAT NO 218

LEVEL -2

SUITE AREA	72.24 SQ.M	777.58 SQ.FT
BALCONY AREA	33.07 SQ.M	355.96 SQ.FT
TOTAL AREA	105.31 SQ.M	1133.55 SQ.FT



KEY PLAN



OKSA DEVELOPER

UNIT PLAN : 1. All dimensions are in imperial and metric, and measured from finish to finish excluding construction tolerances. 2. All materials, dimesions, and drawings are approximately only. 3. Information is subject to change without notice, at developer's absolute discretion. 4. Actual area may vary from the stated area. 5. Drawings not to scale. 6. All images used are for illustrative purposes only and do not represent the actual size, features, specifications, fittings, and furnishings. 7. The developer reserves the right to make revisions / alterations, at it's absolute discretion, without any liability whatsoever.



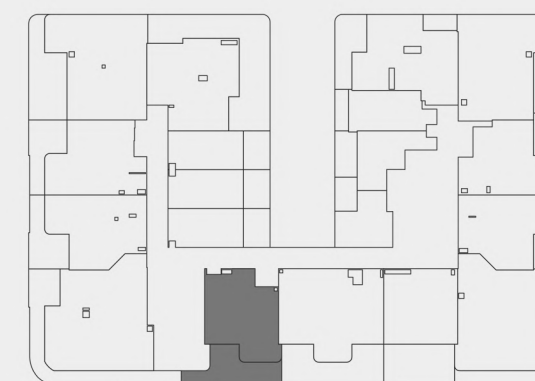
THE EIGHTY THREE

DUBAI SOUTH

1 B H K - FLAT NO 219

LEVEL -2

SUITE AREA	49.42 SQ.M	531.95 SQ.FT
BALCONY AREA	24.12 SQ.M	259.63 SQ.FT
TOTAL AREA	73.54 SQ.M	791.58 SQ.FT

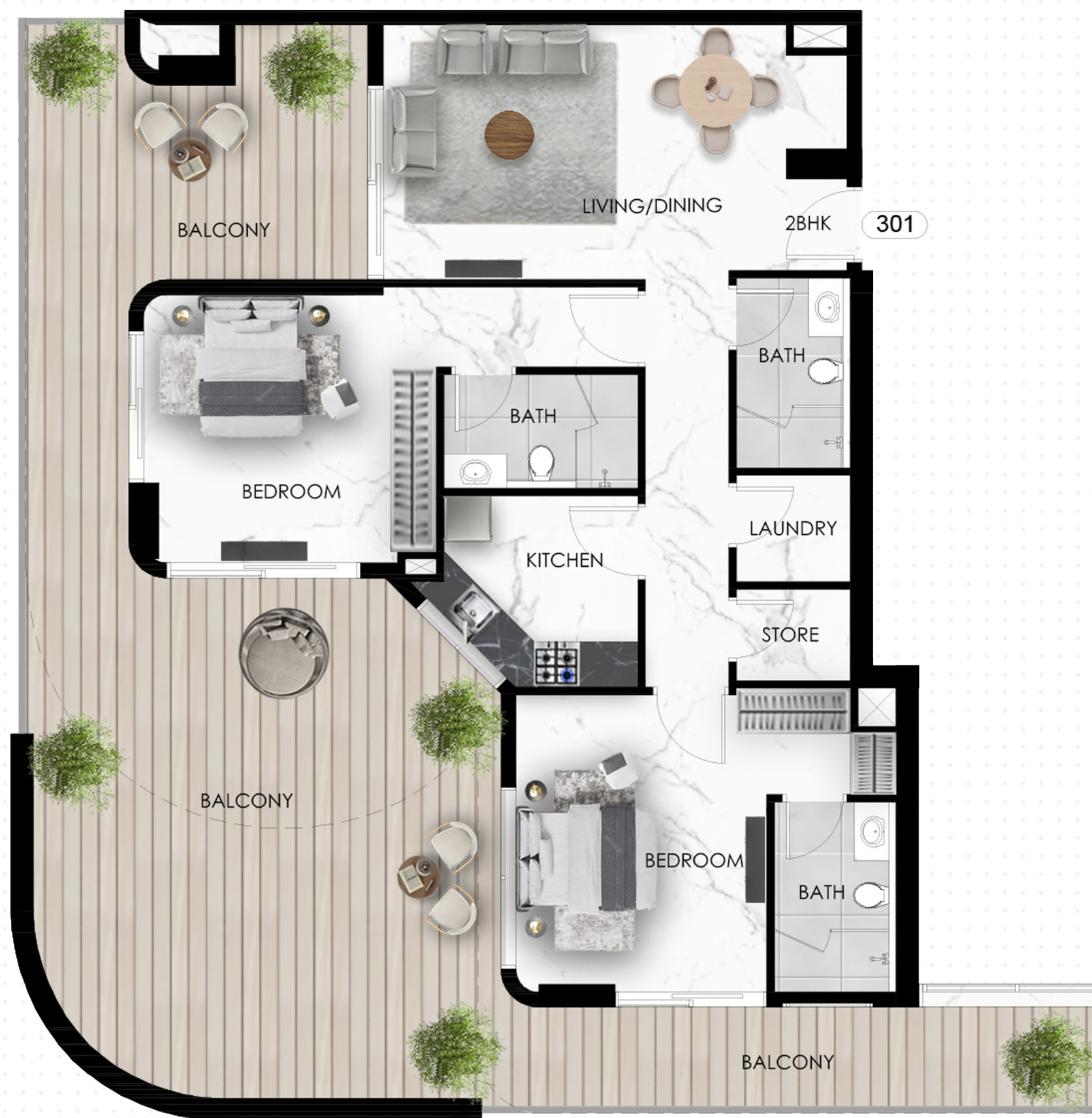


KEY PLAN



OKSA DEVELOPER

UNIT PLAN : 1. All dimensions are in imperial and metric, and measured from finish to finish excluding construction tolerances. 2. All materials, dimesions, and drawings are approximately only. 3. Information is subject to change without notice, at developer's absolute discretion. 4. Actual area may vary from the stated area. 5. Drawings not to scale. 6. All images used are for illustrative purposes only and do not represent the actual size, features, specifications, fittings, and furnishings. 7. The developer reserves the right to make revisions / alterations, at it's absolute discretion, without any liability whatsoever.



THE EIGHTY THREE

DUBAI SOUTH

2 BHK - FLAT NO 301

LEVEL -3

SUITE AREA	87.09 SQ.M	937.43 SQ.FT
BALCONY AREA	76.32 SQ.M	821.50 SQ.FT
TOTAL AREA	163.41 SQ.M	1758.93 SQ.FT



KEY PLAN



OKSA DEVELOPER

UNIT PLAN : 1. All dimensions are in imperial and metric, and measured from finish to finish excluding construction tolerances. 2. All materials, dimesions, and drawings are approximately only. 3. Information is subject to change without notice, at developer's absolute discretion. 4. Actual area may vary from the stated area. 5. Drawings not to scale. 6. All images used are for illustrative purposes only and do not represent the actual size, features, specifications, fittings, and furnishings. 7. The developer reserves the right to make revisions / alterations, at it's absolute discretion, without any liability whatsoever.



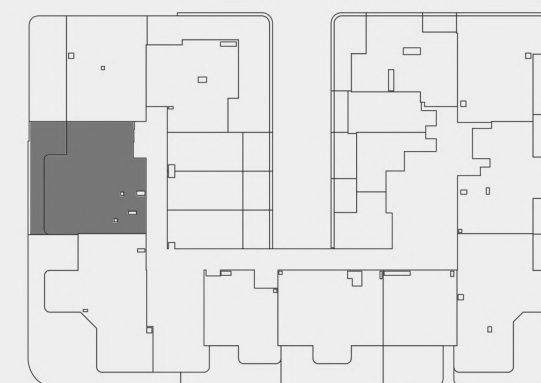
THE EIGHTY THREE

DUBAI SOUTH

2 BHK - FLAT NO 302

LEVEL -3

SUITE AREA	88.21 SQ.M	949.48 SQ.FT
BALCONY AREA	22.13 SQ.M	238.21 SQ.FT
TOTAL AREA	110.34 SQ.M	1187.69 SQ.FT



KEY PLAN



OKSA DEVELOPER

UNIT PLAN : 1. All dimensions are in imperial and metric, and measured from finish to finish excluding construction tolerances. 2. All materials, dimesions, and drawings are approximately only. 3. Information is subject to change without notice, at developer's absolute discretion. 4. Actual area may vary from the stated area. 5. Drawings not to scale. 6. All images used are for illustrative purposes only and do not represent the actual size, features, specifications, fittings, and furnishings. 7. The developer reserves the right to make revisions / alterations, at it's absolute discretion, without any liability whatsoever.



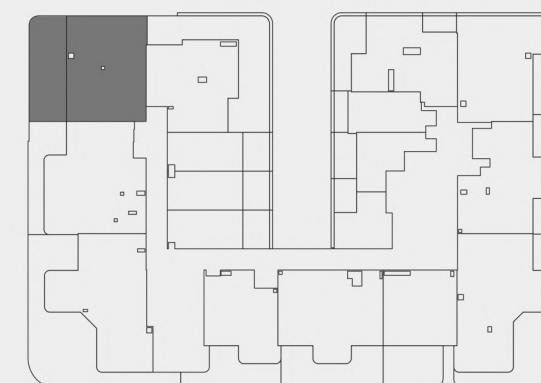
THE EIGHTY THREE

DUBAI SOUTH

2 BHK - FLAT NO 303

LEVEL -3

SUITE AREA	72.29 SQ.M	778.12 SQ.FT
BALCONY AREA	34.82 SQ.M	374.80 SQ.FT
TOTAL AREA	107.11 SQ.M	1152.92 SQ.FT



KEY PLAN



OKSA DEVELOPER

UNIT PLAN : 1. All dimensions are in imperial and metric, and measured from finish to finish excluding construction tolerances. 2. All materials, dimesions, and drawings are approximately only. 3. Information is subject to change without notice, at developer's absolute discretion. 4. Actual area may vary from the stated area. 5. Drawings not to scale. 6. All images used are for illustrative purposes only and do not represent the actual size, features, specifications, fittings, and furnishings. 7. The developer reserves the right to make revisions / alterations, at it's absolute discretion, without any liability whatsoever.



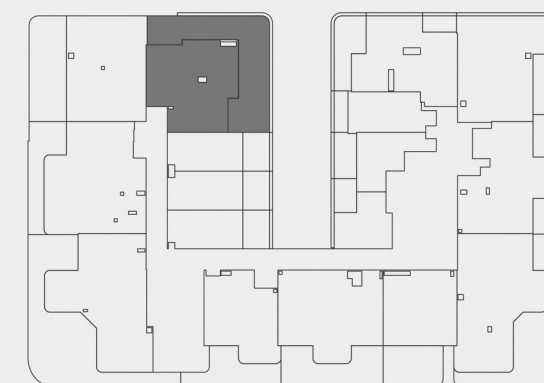
THE EIGHTY THREE

DUBAI SOUTH

2 BHK - FLAT NO 304

LEVEL -3

SUITE AREA	62.92 SQ.M	677.27 SQ.FT
BALCONY AREA	59.29 SQ.M	638.19 SQ.FT
TOTAL AREA	122.21 SQ.M	1315.46 SQ.FT



KEY PLAN



OKSA DEVELOPER

UNIT PLAN : 1. All dimensions are in imperial and metric, and measured from finish to finish excluding construction tolerances. 2. All materials, dimesions, and drawings are approximately only. 3. Information is subject to change without notice, at developer's absolute discretion. 4. Actual area may vary from the stated area. 5. Drawings not to scale. 6. All images used are for illustrative purposes only and do not represent the actual size, features, specifications, fittings, and furnishings. 7. The developer reserves the right to make revisions / alterations, at it's absolute discretion, without any liability whatsoever.



THE EIGHTY THREE

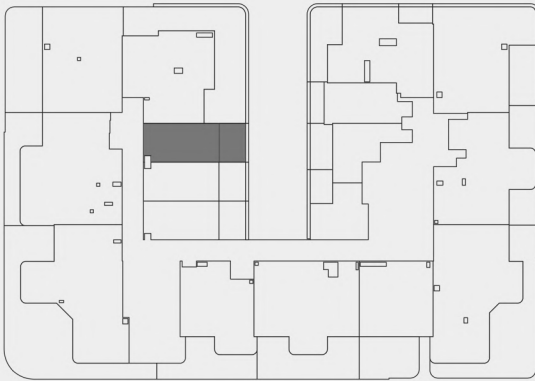
DUBAI SOUTH

STUDIO - FLAT NO 305

LEVEL -3



SUITE AREA	25.06 SQ.M	269.74 SQ.FT
BALCONY AREA	10.59 SQ.M	113.99 SQ.FT
TOTAL AREA	35.65 SQ.M	383.73 SQ.FT



KEY PLAN



OKSA DEVELOPER

UNIT PLAN : 1. All dimensions are in imperial and metric, and measured from finish to finish excluding construction tolerances. 2. All materials, dimesions, and drawings are approximately only. 3. Information is subject to change without notice, at developer's absolute discretion. 4. Actual area may vary from the stated area. 5. Drawings not to scale. 6. All images used are for illustrative purposes only and do not represent the actual size, features, specifications, fittings, and furnishings. 7. The developer reserves the right to make revisions / alterations, at it's absolute discretion, without any liability whatsoever.

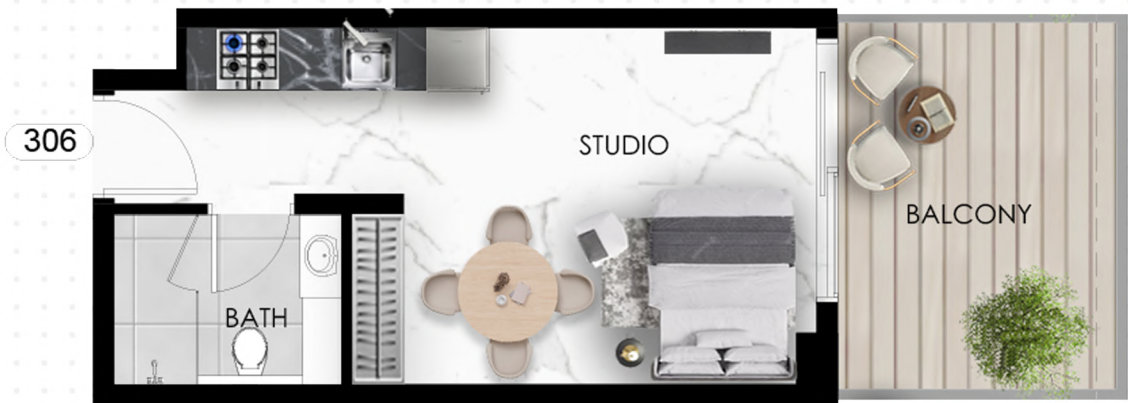


THE EIGHTY THREE

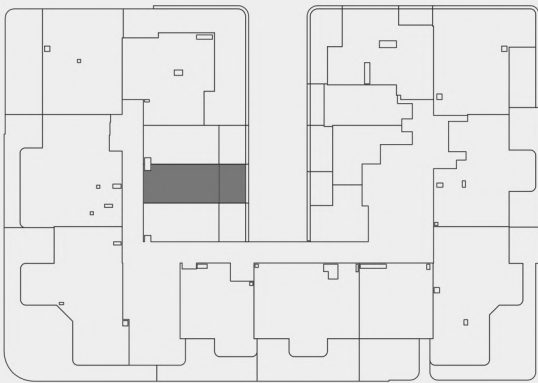
DUBAI SOUTH

STUDIO - FLAT NO 306

LEVEL -3



SUITE AREA	25.09 SQ.M	270.07 SQ.FT
BALCONY AREA	10.41 SQ.M	112.05 SQ.FT
TOTAL AREA	35.50 SQ.M	382.12 SQ.FT



KEY PLAN



OKSA DEVELOPER

UNIT PLAN : 1. All dimensions are in imperial and metric, and measured from finish to finish excluding construction tolerances. 2. All materials, dimesions, and drawings are approximately only. 3. Information is subject to change without notice, at developer's absolute discretion. 4. Actual area may vary from the stated area. 5. Drawings not to scale. 6. All images used are for illustrative purposes only and do not represent the actual size, features, specifications, fittings, and furnishings. 7. The developer reserves the right to make revisions / alterations, at it's absolute discretion, without any liability whatsoever.



THE EIGHTY THREE

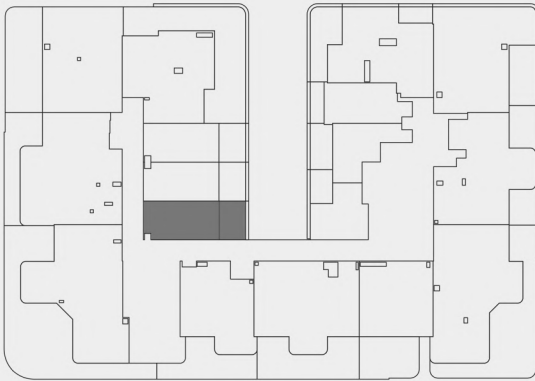
DUBAI SOUTH

STUDIO - FLAT NO 307

LEVEL -3



SUITE AREA	25.11 SQ.M	270.28 SQ.FT
BALCONY AREA	10.39 SQ.M	111.84 SQ.FT
TOTAL AREA	35.50 SQ.M	382.12 SQ.FT



KEY PLAN



OKSA DEVELOPER

UNIT PLAN : 1. All dimensions are in imperial and metric, and measured from finish to finish excluding construction tolerances. 2. All materials, dimesions, and drawings are approximately only. 3. Information is subject to change without notice, at developer's absolute discretion. 4. Actual area may vary from the stated area. 5. Drawings not to scale. 6. All images used are for illustrative purposes only and do not represent the actual size, features, specifications, fittings, and furnishings. 7. The developer reserves the right to make revisions / alterations, at it's absolute discretion, without any liability whatsoever.



THE EIGHTY THREE

DUBAI SOUTH

STUDIO - FLAT NO 308

LEVEL -3

SUITE AREA	23.64 SQ.M	254.46 SQ.FT
BALCONY AREA	7.71 SQ.M	82.99 SQ.FT
TOTAL AREA	31.35 SQ.M	337.45 SQ.FT



KEY PLAN



OKSA DEVELOPER

UNIT PLAN : 1. All dimensions are in imperial and metric, and measured from finish to finish excluding construction tolerances. 2. All materials, dimesions, and drawings are approximately only. 3. Information is subject to change without notice, at developer's absolute discretion. 4. Actual area may vary from the stated area. 5. Drawings not to scale. 6. All images used are for illustrative purposes only and do not represent the actual size, features, specifications, fittings, and furnishings. 7. The developer reserves the right to make revisions / alterations, at it's absolute discretion, without any liability whatsoever.



THE EIGHTY THREE

DUBAI SOUTH

STUDIO - FLAT NO 309

LEVEL -3



SUITE AREA	26.17 SQ.M	281.69 SQ.FT
BALCONY AREA	10.19 SQ.M	109.68 SQ.FT
TOTAL AREA	36.36 SQ.M	391.38 SQ.FT



KEY PLAN



OKSA DEVELOPER

UNIT PLAN : 1. All dimensions are in imperial and metric, and measured from finish to finish excluding construction tolerances. 2. All materials, dimesions, and drawings are approximately only. 3. Information is subject to change without notice, at developer's absolute discretion. 4. Actual area may vary from the stated area. 5. Drawings not to scale. 6. All images used are for illustrative purposes only and do not represent the actual size, features, specifications, fittings, and furnishings. 7. The developer reserves the right to make revisions / alterations, at it's absolute discretion, without any liability whatsoever.



THE EIGHTY THREE

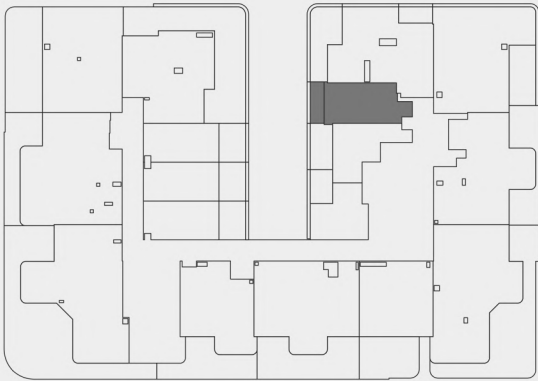
DUBAI SOUTH

STUDIO - FLAT NO 310

LEVEL -3



SUITE AREA	27.85 SQ.M	299.77 SQ.FT
BALCONY AREA	6.39 SQ.M	68.78 SQ.FT
TOTAL AREA	34.24 SQ.M	368.56 SQ.FT



KEY PLAN



OKSA DEVELOPER

UNIT PLAN : 1. All dimensions are in imperial and metric, and measured from finish to finish excluding construction tolerances. 2. All materials, dimesions, and drawings are approximately only. 3. Information is subject to change without notice, at developer's absolute discretion. 4. Actual area may vary from the stated area. 5. Drawings not to scale. 6. All images used are for illustrative purposes only and do not represent the actual size, features, specifications, fittings, and furnishings. 7. The developer reserves the right to make revisions / alterations, at it's absolute discretion, without any liability whatsoever.



THE EIGHTY THREE

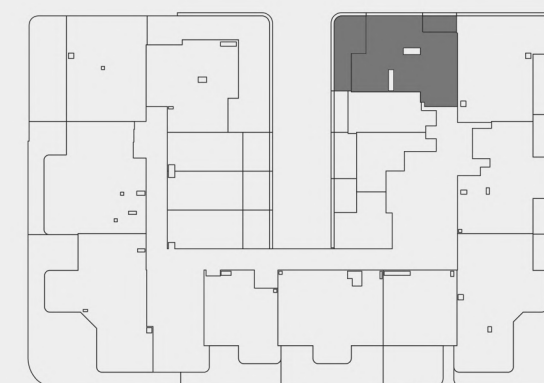
DUBAI SOUTH

2 BHK - FLAT NO 311

LEVEL -3



SUITE AREA	64.06 SQ.M	689.54 SQ.FT
BALCONY AREA	21.77 SQ.M	234.33 SQ.FT
TOTAL AREA	85.83 SQ.M	923.87 SQ.FT



KEY PLAN



OKSA DEVELOPER

UNIT PLAN : 1. All dimensions are in imperial and metric, and measured from finish to finish excluding construction tolerances. 2. All materials, dimesions, and drawings are approximately only. 3. Information is subject to change without notice, at developer's absolute discretion. 4. Actual area may vary from the stated area. 5. Drawings not to scale. 6. All images used are for illustrative purposes only and do not represent the actual size, features, specifications, fittings, and furnishings. 7. The developer reserves the right to make revisions / alterations, at it's absolute discretion, without any liability whatsoever.



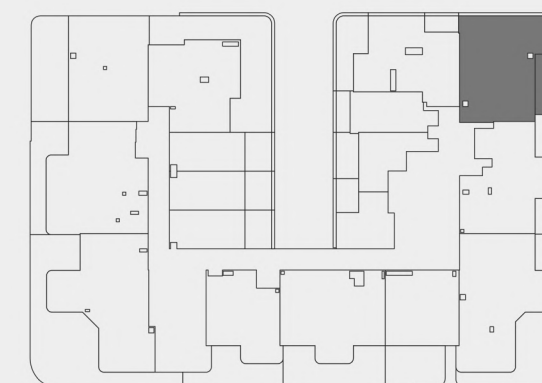
THE EIGHTY THREE

DUBAI SOUTH

2 BHK - FLAT NO 312

LEVEL -3

SUITE AREA	76.37 SQ.M	822.04 SQ.FT
BALCONY AREA	14.23 SQ.M	153.17 SQ.FT
TOTAL AREA	90.60 SQ.M	975.21 SQ.FT



KEY PLAN



OKSA DEVELOPER

UNIT PLAN : 1. All dimensions are in imperial and metric, and measured from finish to finish excluding construction tolerances. 2. All materials, dimesions, and drawings are approximately only. 3. Information is subject to change without notice, at developer's absolute discretion. 4. Actual area may vary from the stated area. 5. Drawings not to scale. 6. All images used are for illustrative purposes only and do not represent the actual size, features, specifications, fittings, and furnishings. 7. The developer reserves the right to make revisions / alterations, at it's absolute discretion, without any liability whatsoever.



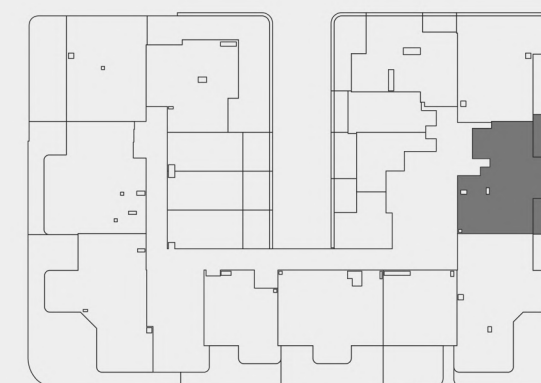
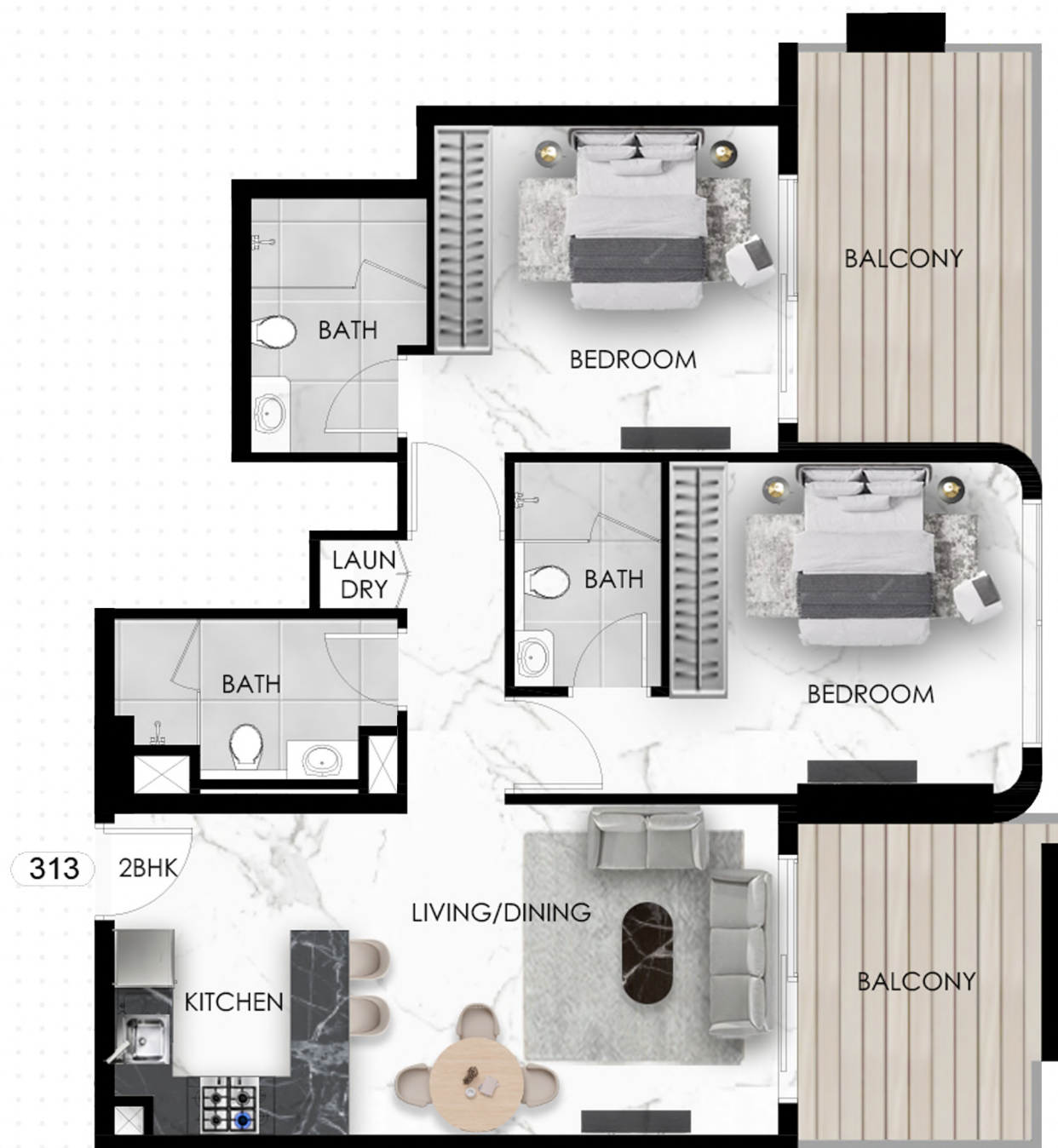
THE EIGHTY THREE

DUBAI SOUTH

2 BHK - FLAT NO 313

LEVEL -3

SUITE AREA	71.51 SQ.M	769.73 SQ.FT
BALCONY AREA	20.08 SQ.M	216.141 SQ.FT
TOTAL AREA	91.59 SQ.M	985.87 SQ.FT

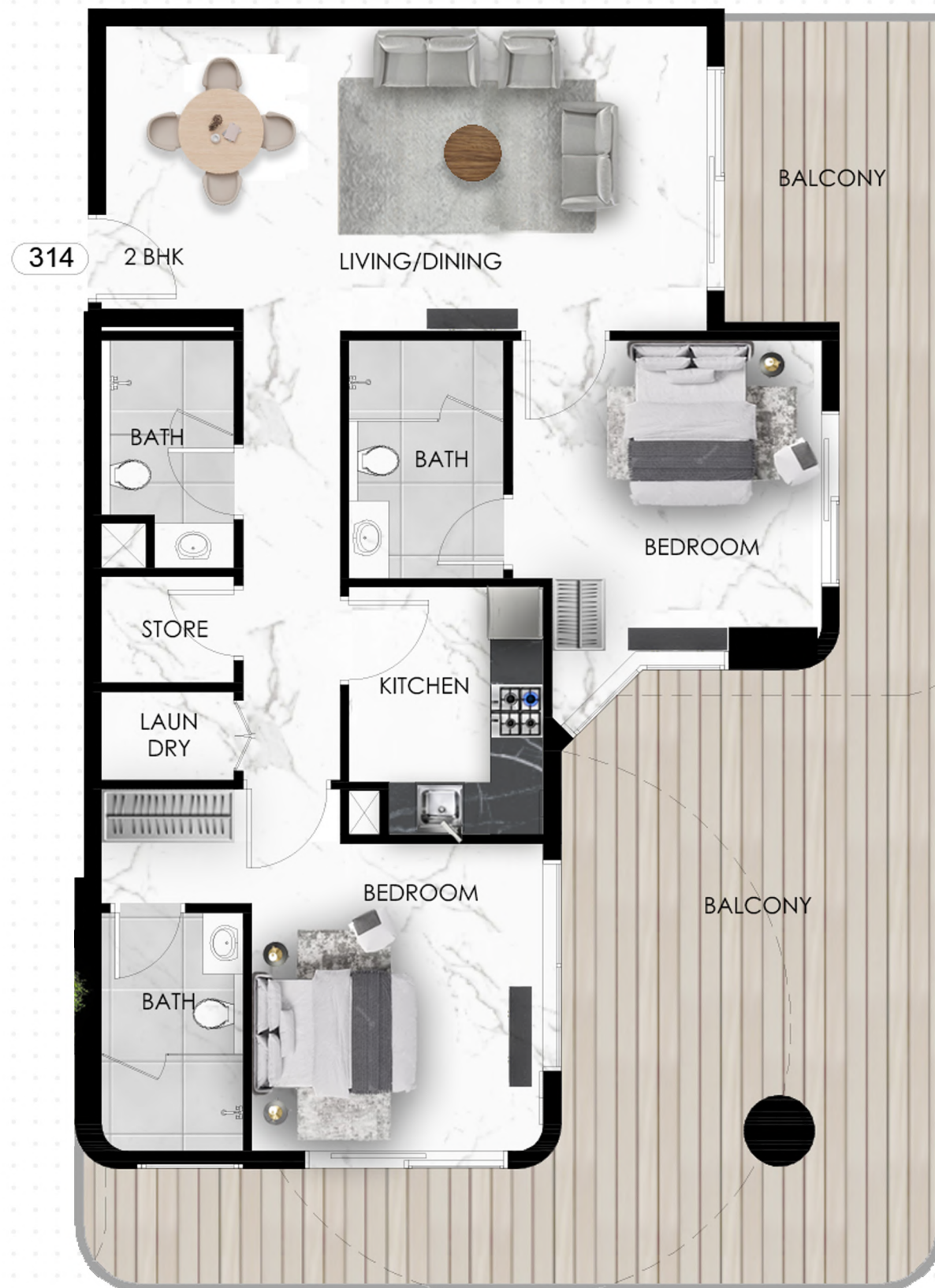


KEY PLAN



OKSA DEVELOPER

UNIT PLAN : 1. All dimensions are in imperial and metric, and measured from finish to finish excluding construction tolerances. 2. All materials, dimesions, and drawings are approximately only. 3. Information is subject to change without notice, at developer's absolute discretion. 4. Actual area may vary from the stated area. 5. Drawings not to scale. 6. All images used are for illustrative purposes only and do not represent the actual size, features, specifications, fittings, and furnishings. 7. The developer reserves the right to make revisions / alterations, at it's absolute discretion, without any liability whatsoever.



THE EIGHTY THREE

DUBAI SOUTH

2 BHK - FLAT NO 314

LEVEL -3

SUITE AREA	85.63 SQ.M	921.71 SQ.FT
BALCONY AREA	51.88 SQ.M	558.43 SQ.FT
TOTAL AREA	137.51 SQ.M	1480.15 SQ.FT



KEY PLAN



OKSA DEVELOPER

UNIT PLAN : 1. All dimensions are in imperial and metric, and measured from finish to finish excluding construction tolerances. 2. All materials, dimesions, and drawings are approximately only. 3. Information is subject to change without notice, at developer's absolute discretion. 4. Actual area may vary from the stated area. 5. Drawings not to scale. 6. All images used are for illustrative purposes only and do not represent the actual size, features, specifications, fittings, and furnishings. 7. The developer reserves the right to make revisions / alterations, at it's absolute discretion, without any liability whatsoever.



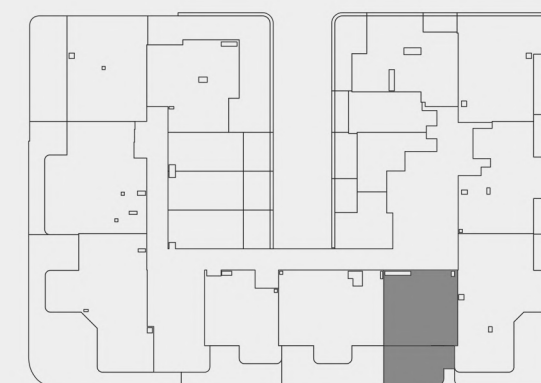
THE EIGHTY THREE

DUBAI SOUTH

1 BHK - FLAT NO 315

LEVEL -3

SUITE AREA	46.83 SQ.M	504.07 SQ.FT
BALCONY AREA	23.52 SQ.M	253.17 SQ.FT
TOTAL AREA	70.35 SQ.M	757.24 SQ.FT



KEY PLAN



OKSA DEVELOPER

UNIT PLAN : 1. All dimensions are in imperial and metric, and measured from finish to finish excluding construction tolerances. 2. All materials, dimesions, and drawings are approximately only. 3. Information is subject to change without notice, at developer's absolute discretion. 4. Actual area may vary from the stated area. 5. Drawings not to scale. 6. All images used are for illustrative purposes only and do not represent the actual size, features, specifications, fittings, and furnishings. 7. The developer reserves the right to make revisions / alterations, at it's absolute discretion, without any liability whatsoever.



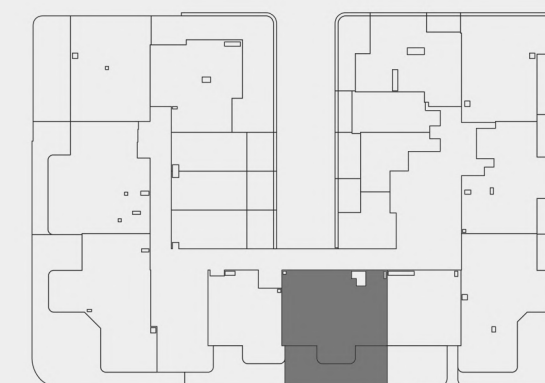
THE EIGHTY THREE

DUBAI SOUTH

2 BHK - FLAT NO 316

LEVEL -3

SUITE AREA	72.24 SQ.M	777.58 SQ.FT
BALCONY AREA	33.07 SQ.M	355.96 SQ.FT
TOTAL AREA	105.31 SQ.M	1133.55 SQ.FT



KEY PLAN



OKSA DEVELOPER

UNIT PLAN : 1. All dimensions are in imperial and metric, and measured from finish to finish excluding construction tolerances. 2. All materials, dimesions, and drawings are approximately only. 3. Information is subject to change without notice, at developer's absolute discretion. 4. Actual area may vary from the stated area. 5. Drawings not to scale. 6. All images used are for illustrative purposes only and do not represent the actual size, features, specifications, fittings, and furnishings. 7. The developer reserves the right to make revisions / alterations, at it's absolute discretion, without any liability whatsoever.



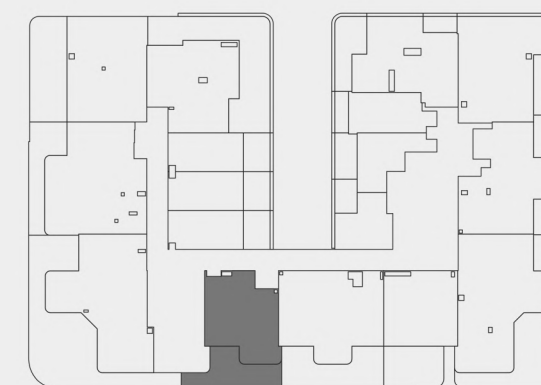
THE EIGHTY THREE

DUBAI SOUTH

1 BHK - FLAT NO 317

LEVEL -3

SUITE AREA	49.42 SQ.M	531.95 SQ.FT
BALCONY AREA	24.12 SQ.M	259.63 SQ.FT
TOTAL AREA	73.54 SQ.M	791.58 SQ.FT

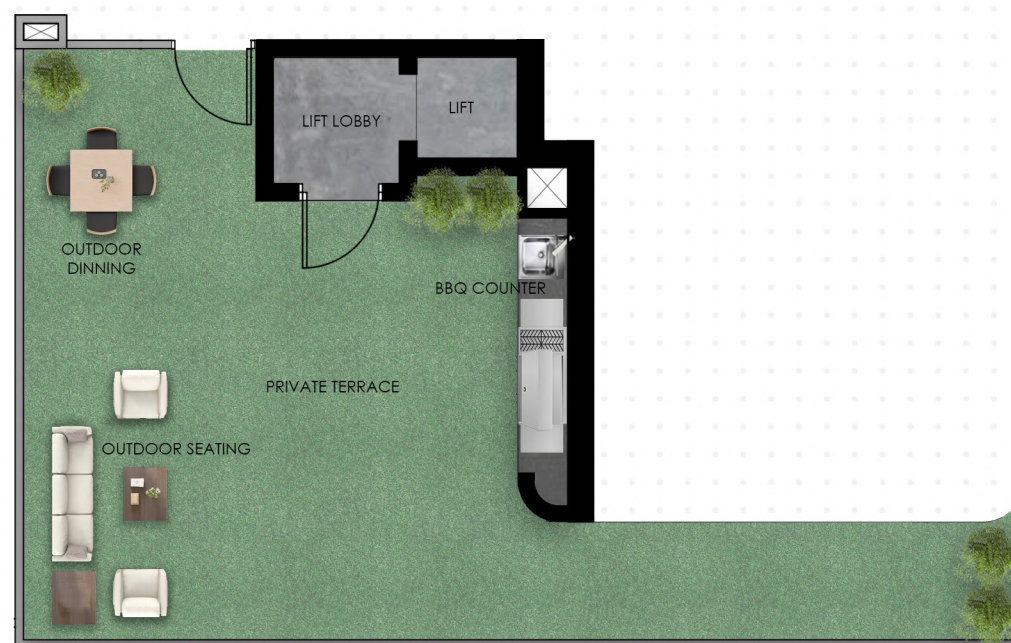
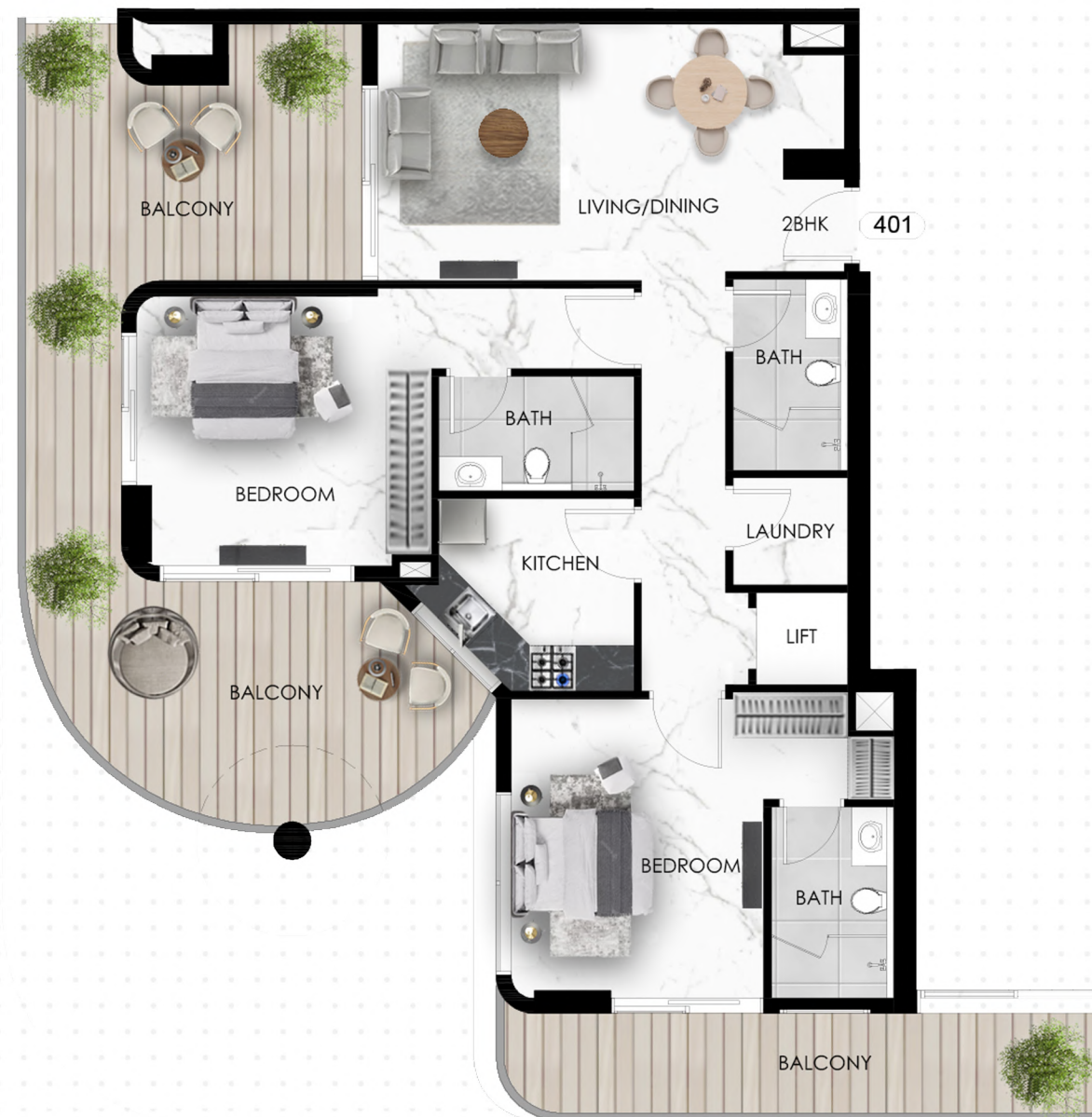


KEY PLAN



OKSA DEVELOPER

UNIT PLAN : 1. All dimensions are in imperial and metric, and measured from finish to finish excluding construction tolerances. 2. All materials, dimesions, and drawings are approximately only. 3. Information is subject to change without notice, at developer's absolute discretion. 4. Actual area may vary from the stated area. 5. Drawings not to scale. 6. All images used are for illustrative purposes only and do not represent the actual size, features, specifications, fittings, and furnishings. 7. The developer reserves the right to make revisions / alterations, at it's absolute discretion, without any liability whatsoever.



THE EIGHTY THREE

DUBAI SOUTH

2 BHK - FLAT NO 401

LEVEL -4

SUITE AREA	92.08 SQ.M	991.14 SQ.FT
BALCONY AREA	98.18 SQ.M	1056.80 SQ.FT
TOTAL AREA	190.26 SQ.M	2047.94 SQ.FT



KEY PLAN



OKSA DEVELOPER

UNIT PLAN : 1. All dimensions are in imperial and metric, and measured from finish to finish excluding construction tolerances. 2. All materials, dimesions, and drawings are approximately only. 3. Information is subject to change without notice, at developer's absolute discretion. 4. Actual area may vary from the stated area. 5. Drawings not to scale. 6. All images used are for illustrative purposes only and do not represent the actual size, features, specifications, fittings, and furnishings. 7. The developer reserves the right to make revisions / alterations, at it's absolute discretion, without any liability whatsoever.



THE EIGHTY THREE

DUBAI SOUTH

2 BHK - FLAT NO 402

LEVEL -4

SUITE AREA	88.21 SQ.M	949.48 SQ.FT
BALCONY AREA	21.08 SQ.M	226.90 SQ.FT
TOTAL AREA	109.29 SQ.M	1176.39 SQ.FT



KEY PLAN



OKSA DEVELOPER

UNIT PLAN : 1. All dimensions are in imperial and metric, and measured from finish to finish excluding construction tolerances. 2. All materials, dimesions, and drawings are approximately only. 3. Information is subject to change without notice, at developer's absolute discretion. 4. Actual area may vary from the stated area. 5. Drawings not to scale. 6. All images used are for illustrative purposes only and do not represent the actual size, features, specifications, fittings, and furnishings. 7. The developer reserves the right to make revisions / alterations, at it's absolute discretion, without any liability whatsoever.



THE EIGHTY THREE

DUBAI SOUTH

2 BHK - FLAT NO 403

LEVEL -4

SUITE AREA	77.14 SQ.M	830.33 SQ.FT
BALCONY AREA	69.80 SQ.M	751.32 SQ.FT
TOTAL AREA	146.94 SQ.M	1581.65 SQ.FT



KEY PLAN



OKSA DEVELOPER

UNIT PLAN : 1. All dimensions are in imperial and metric, and measured from finish to finish excluding construction tolerances. 2. All materials, dimesions, and drawings are approximately only. 3. Information is subject to change without notice, at developer's absolute discretion. 4. Actual area may vary from the stated area. 5. Drawings not to scale. 6. All images used are for illustrative purposes only and do not represent the actual size, features, specifications, fittings, and furnishings. 7. The developer reserves the right to make revisions / alterations, at it's absolute discretion, without any liability whatsoever.



THE EIGHTY THREE

DUBAI SOUTH

2 BHK - FLAT NO 404

LEVEL -4

SUITE AREA	62.92 SQ.M	677.27 SQ.FT
BALCONY AREA	56.35 SQ.M	606.55 SQ.FT
TOTAL AREA	119.27 SQ.M	1283.81 SQ.FT



KEY PLAN



OKSA DEVELOPER

UNIT PLAN : 1. All dimensions are in imperial and metric, and measured from finish to finish excluding construction tolerances. 2. All materials, dimesions, and drawings are approximately only. 3. Information is subject to change without notice, at developer's absolute discretion. 4. Actual area may vary from the stated area. 5. Drawings not to scale. 6. All images used are for illustrative purposes only and do not represent the actual size, features, specifications, fittings, and furnishings. 7. The developer reserves the right to make revisions / alterations, at it's absolute discretion, without any liability whatsoever.



THE EIGHTY THREE

DUBAI SOUTH

STUDIO - FLAT NO 405

LEVEL -4



SUITE AREA	25.06 SQ.M	269.74 SQ.FT
BALCONY AREA	9.48 SQ.M	102.04 SQ.FT
TOTAL AREA	34.54 SQ.M	371.79 SQ.FT



KEY PLAN



OKSA DEVELOPER

UNIT PLAN : 1. All dimensions are in imperial and metric, and measured from finish to finish excluding construction tolerances. 2. All materials, dimesions, and drawings are approximately only. 3. Information is subject to change without notice, at developer's absolute discretion. 4. Actual area may vary from the stated area. 5. Drawings not to scale. 6. All images used are for illustrative purposes only and do not represent the actual size, features, specifications, fittings, and furnishings. 7. The developer reserves the right to make revisions / alterations, at it's absolute discretion, without any liability whatsoever.



THE EIGHTY THREE

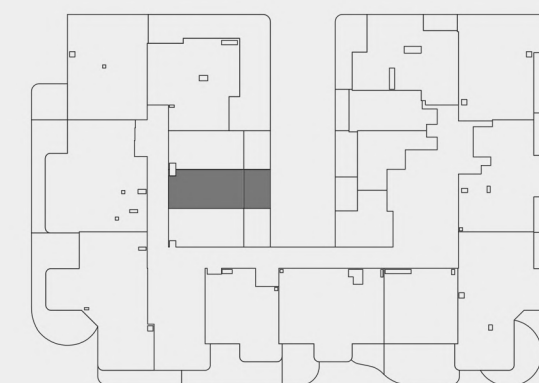
DUBAI SOUTH

STUDIO - FLAT NO 406

LEVEL -4



SUITE AREA	25.09 SQ.M	270.07 SQ.FT
BALCONY AREA	9.32 SQ.M	100.32 SQ.FT
TOTAL AREA	34.41 SQ.M	370.39 SQ.FT



KEY PLAN



OKSA DEVELOPER

UNIT PLAN : 1. All dimensions are in imperial and metric, and measured from finish to finish excluding construction tolerances. 2. All materials, dimesions, and drawings are approximately only. 3. Information is subject to change without notice, at developer's absolute discretion. 4. Actual area may vary from the stated area. 5. Drawings not to scale. 6. All images used are for illustrative purposes only and do not represent the actual size, features, specifications, fittings, and furnishings. 7. The developer reserves the right to make revisions / alterations, at it's absolute discretion, without any liability whatsoever.



THE EIGHTY THREE

DUBAI SOUTH

STUDIO - FLAT NO 407

LEVEL -4



SUITE AREA	25.11 SQ.M	270.28 SQ.FT
BALCONY AREA	9.30 SQ.M	100.10 SQ.FT
TOTAL AREA	34.41 SQ.M	370.39 SQ.FT



KEY PLAN



OKSA DEVELOPER

UNIT PLAN : 1. All dimensions are in imperial and metric, and measured from finish to finish excluding construction tolerances. 2. All materials, dimesions, and drawings are approximately only. 3. Information is subject to change without notice, at developer's absolute discretion. 4. Actual area may vary from the stated area. 5. Drawings not to scale. 6. All images used are for illustrative purposes only and do not represent the actual size, features, specifications, fittings, and furnishings. 7. The developer reserves the right to make revisions / alterations, at it's absolute discretion, without any liability whatsoever.



THE EIGHTY THREE

DUBAI SOUTH

STUDIO - FLAT NO 408

LEVEL -4

SUITE AREA	23.64 SQ.M	254.46 SQ.FT
BALCONY AREA	6.73 SQ.M	72.44 SQ.FT
TOTAL AREA	30.37 SQ.M	326.90 SQ.FT



KEY PLAN



OKSA DEVELOPER

UNIT PLAN : 1. All dimensions are in imperial and metric, and measured from finish to finish excluding construction tolerances. 2. All materials, dimesions, and drawings are approximately only. 3. Information is subject to change without notice, at developer's absolute discretion. 4. Actual area may vary from the stated area. 5. Drawings not to scale. 6. All images used are for illustrative purposes only and do not represent the actual size, features, specifications, fittings, and furnishings. 7. The developer reserves the right to make revisions / alterations, at it's absolute discretion, without any liability whatsoever.

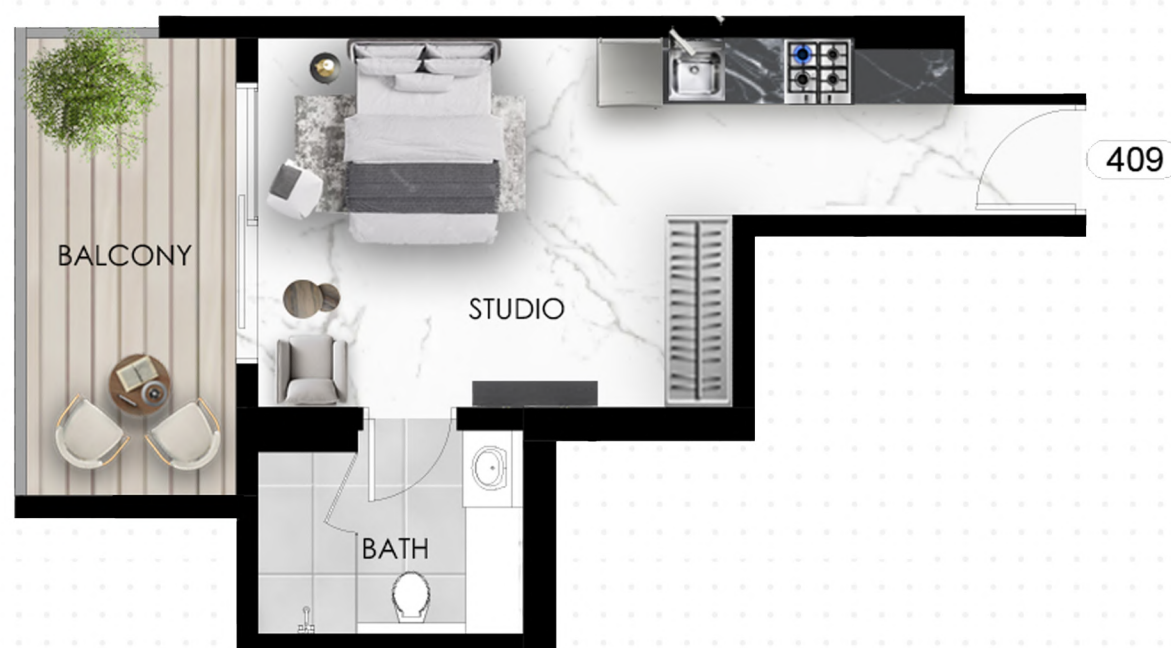


THE EIGHTY THREE

DUBAI SOUTH

STUDIO - FLAT NO 409

LEVEL -4



SUITE AREA	26.17 SQ.M	281.69 SQ.FT
BALCONY AREA	8.90 SQ.M	95.80 SQ.FT
TOTAL AREA	35.07 SQ.M	377.49 SQ.FT



KEY PLAN



OKSA DEVELOPER

UNIT PLAN : 1. All dimensions are in imperial and metric, and measured from finish to finish excluding construction tolerances. 2. All materials, dimesions, and drawings are approximately only. 3. Information is subject to change without notice, at developer's absolute discretion. 4. Actual area may vary from the stated area. 5. Drawings not to scale. 6. All images used are for illustrative purposes only and do not represent the actual size, features, specifications, fittings, and furnishings. 7. The developer reserves the right to make revisions / alterations, at it's absolute discretion, without any liability whatsoever.



THE EIGHTY THREE

DUBAI SOUTH

STUDIO - FLAT NO 410

LEVEL -4



SUITE AREA	27.85 SQ.M	299.77 SQ.FT
BALCONY AREA	5.22 SQ.M	56.19 SQ.FT
TOTAL AREA	33.07 SQ.M	355.96 SQ.FT



KEY PLAN



OKSA DEVELOPER

UNIT PLAN : 1. All dimensions are in imperial and metric, and measured from finish to finish excluding construction tolerances. 2. All materials, dimesions, and drawings are approximately only. 3. Information is subject to change without notice, at developer's absolute discretion. 4. Actual area may vary from the stated area. 5. Drawings not to scale. 6. All images used are for illustrative purposes only and do not represent the actual size, features, specifications, fittings, and furnishings. 7. The developer reserves the right to make revisions / alterations, at it's absolute discretion, without any liability whatsoever.



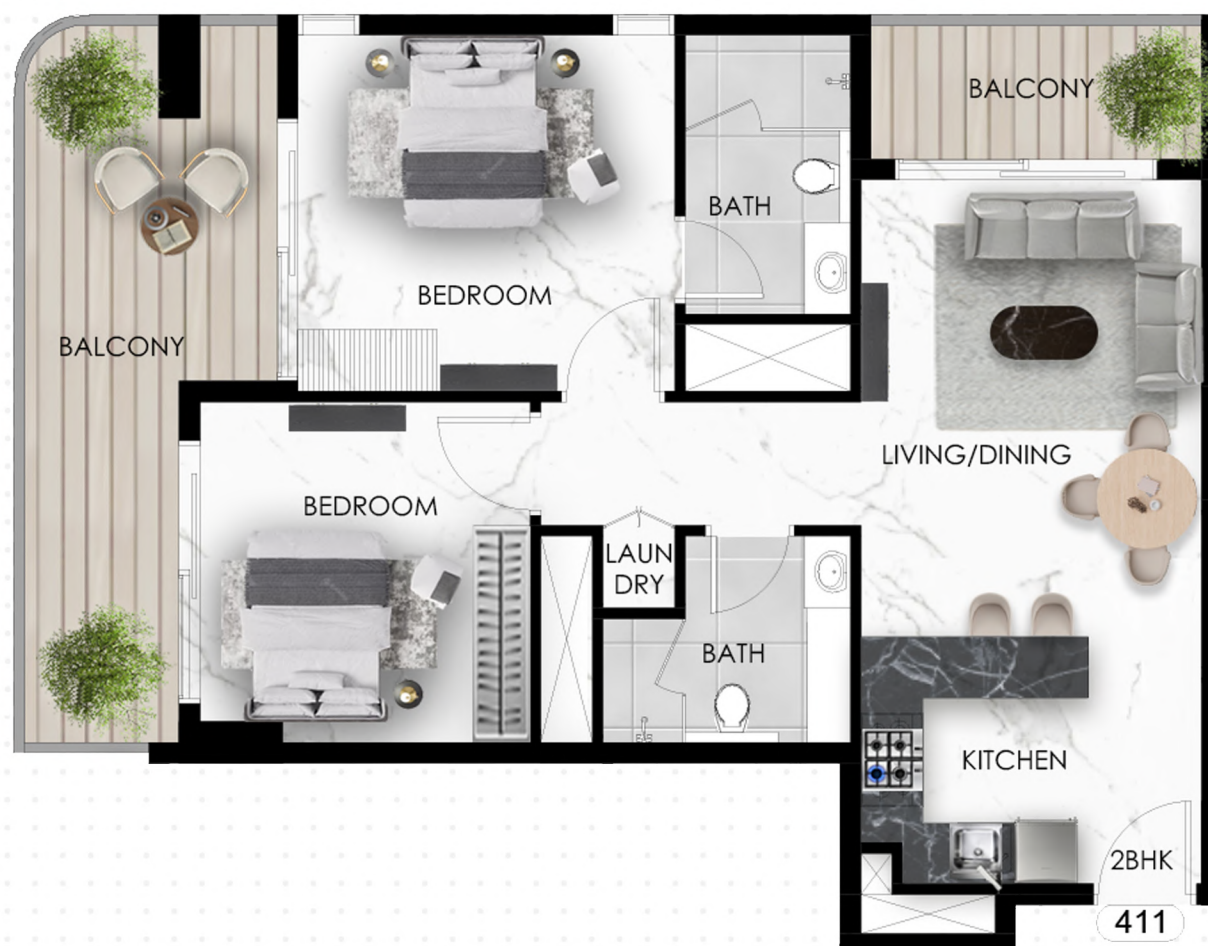
THE EIGHTY THREE

DUBAI SOUTH

2 BHK - FLAT NO 411

LEVEL -4

SUITE AREA	64.06 SQ.M	689.54 SQ.FT
BALCONY AREA	19.76 SQ.M	212.69 SQ.FT
TOTAL AREA	83.82 SQ.M	902.23 SQ.FT



KEY PLAN



OKSA DEVELOPER

UNIT PLAN : 1. All dimensions are in imperial and metric, and measured from finish to finish excluding construction tolerances. 2. All materials, dimesions, and drawings are approximately only. 3. Information is subject to change without notice, at developer's absolute discretion. 4. Actual area may vary from the stated area. 5. Drawings not to scale. 6. All images used are for illustrative purposes only and do not represent the actual size, features, specifications, fittings, and furnishings. 7. The developer reserves the right to make revisions / alterations, at it's absolute discretion, without any liability whatsoever.



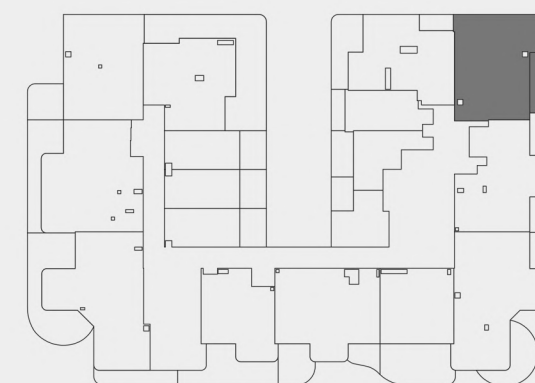
THE EIGHTY THREE

DUBAI SOUTH

2 BHK - FLAT NO 412

LEVEL -4

SUITE AREA	76.56 SQ.M	824.08 SQ.FT
BALCONY AREA	14.22 SQ.M	153.06 SQ.FT
TOTAL AREA	90.78 SQ.M	977.15 SQ.FT



KEY PLAN



OKSA DEVELOPER

UNIT PLAN : 1. All dimensions are in imperial and metric, and measured from finish to finish excluding construction tolerances. 2. All materials, dimesions, and drawings are approximately only. 3. Information is subject to change without notice, at developer's absolute discretion. 4. Actual area may vary from the stated area. 5. Drawings not to scale. 6. All images used are for illustrative purposes only and do not represent the actual size, features, specifications, fittings, and furnishings. 7. The developer reserves the right to make revisions / alterations, at it's absolute discretion, without any liability whatsoever.



THE EIGHTY THREE

DUBAI SOUTH

2 BHK - FLAT NO 413

LEVEL -4

SUITE AREA	71.51 SQ.M	769.73 SQ.FT
BALCONY AREA	19.62 SQ.M	211.19 SQ.FT
TOTAL AREA	91.13 SQ.M	980.92 SQ.FT



KEY PLAN



OKSA DEVELOPER

UNIT PLAN : 1. All dimensions are in imperial and metric, and measured from finish to finish excluding construction tolerances. 2. All materials, dimesions, and drawings are approximately only. 3. Information is subject to change without notice, at developer's absolute discretion. 4. Actual area may vary from the stated area. 5. Drawings not to scale. 6. All images used are for illustrative purposes only and do not represent the actual size, features, specifications, fittings, and furnishings. 7. The developer reserves the right to make revisions / alterations, at it's absolute discretion, without any liability whatsoever.



THE EIGHTY THREE

DUBAI SOUTH

2 BHK - FLAT NO 414

LEVEL -4

SUITE AREA	90.48 SQ.M	973.92 SQ.FT
BALCONY AREA	101.96 SQ.M	1097.49 SQ.FT
TOTAL AREA	192.44 SQ.M	2071.41 SQ.FT



KEY PLAN



OKSA DEVELOPER

UNIT PLAN : 1. All dimensions are in imperial and metric, and measured from finish to finish excluding construction tolerances. 2. All materials, dimesions, and drawings are approximately only. 3. Information is subject to change without notice, at developer's absolute discretion. 4. Actual area may vary from the stated area. 5. Drawings not to scale. 6. All images used are for illustrative purposes only and do not represent the actual size, features, specifications, fittings, and furnishings. 7. The developer reserves the right to make revisions / alterations, at it's absolute discretion, without any liability whatsoever.



THE EIGHTY THREE

DUBAI SOUTH

1 BHK - FLAT NO 415

LEVEL -4

SUITE AREA	46.83 SQ.M	504.07 SQ.FT
BALCONY AREA	26.47 SQ.M	284.92 SQ.FT
TOTAL AREA	73.30 SQ.M	788.99 SQ.FT



KEY PLAN



OKSA DEVELOPER

UNIT PLAN : 1. All dimensions are in imperial and metric, and measured from finish to finish excluding construction tolerances. 2. All materials, dimesions, and drawings are approximately only. 3. Information is subject to change without notice, at developer's absolute discretion. 4. Actual area may vary from the stated area. 5. Drawings not to scale. 6. All images used are for illustrative purposes only and do not represent the actual size, features, specifications, fittings, and furnishings. 7. The developer reserves the right to make revisions / alterations, at it's absolute discretion, without any liability whatsoever.



THE EIGHTY THREE

DUBAI SOUTH

2 BHK - FLAT NO 416

LEVEL -4

SUITE AREA	72.24 SQ.M	777.58 SQ.FT
BALCONY AREA	19.97 SQ.M	214.96 SQ.FT
TOTAL AREA	92.21 SQ.M	992.54 SQ.FT



KEY PLAN



OKSA DEVELOPER

UNIT PLAN : 1. All dimensions are in imperial and metric, and measured from finish to finish excluding construction tolerances. 2. All materials, dimesions, and drawings are approximately only. 3. Information is subject to change without notice, at developer's absolute discretion. 4. Actual area may vary from the stated area. 5. Drawings not to scale. 6. All images used are for illustrative purposes only and do not represent the actual size, features, specifications, fittings, and furnishings. 7. The developer reserves the right to make revisions / alterations, at it's absolute discretion, without any liability whatsoever.



THE EIGHTY THREE

DUBAI SOUTH

1 BHK - FLAT NO 417

LEVEL -4

SUITE AREA	49.42 SQ.M	531.95 SQ.FT
BALCONY AREA	24.12 SQ.M	259.63 SQ.FT
TOTAL AREA	73.54 SQ.M	791.58 SQ.FT



KEY PLAN



OKSA DEVELOPER

UNIT PLAN : 1. All dimensions are in imperial and metric, and measured from finish to finish excluding construction tolerances. 2. All materials, dimesions, and drawings are approximately only. 3. Information is subject to change without notice, at developer's absolute discretion. 4. Actual area may vary from the stated area. 5. Drawings not to scale. 6. All images used are for illustrative purposes only and do not represent the actual size, features, specifications, fittings, and furnishings. 7. The developer reserves the right to make revisions / alterations, at it's absolute discretion, without any liability whatsoever.