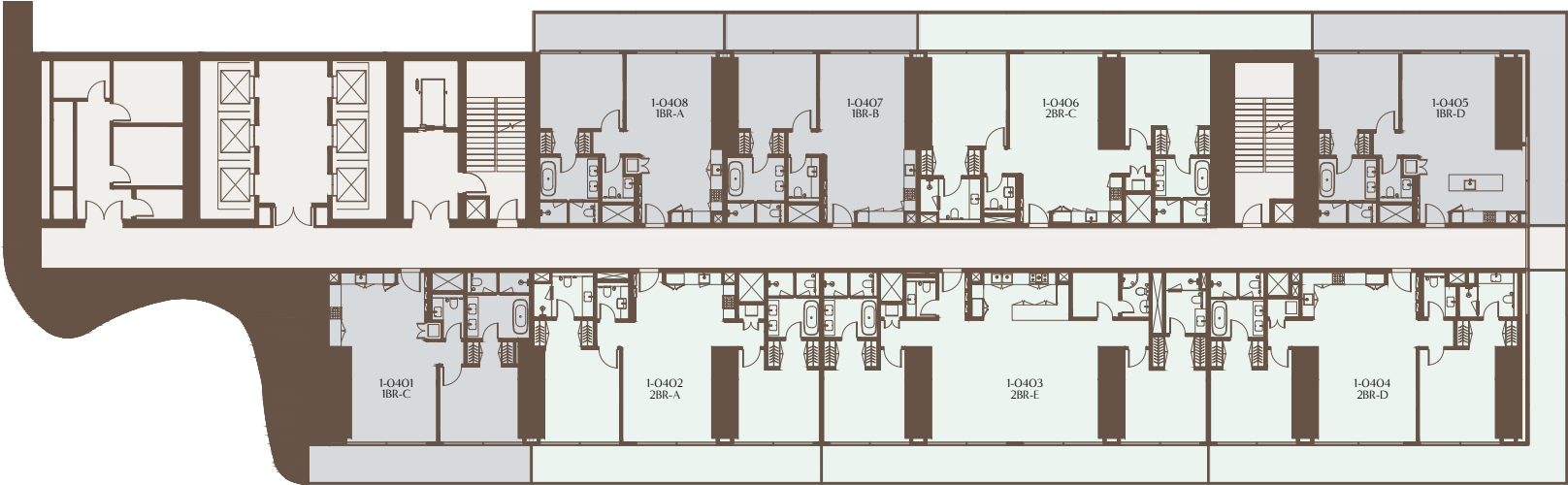


4<sup>TH</sup> TO 17<sup>TH</sup> FLOOR PLAN

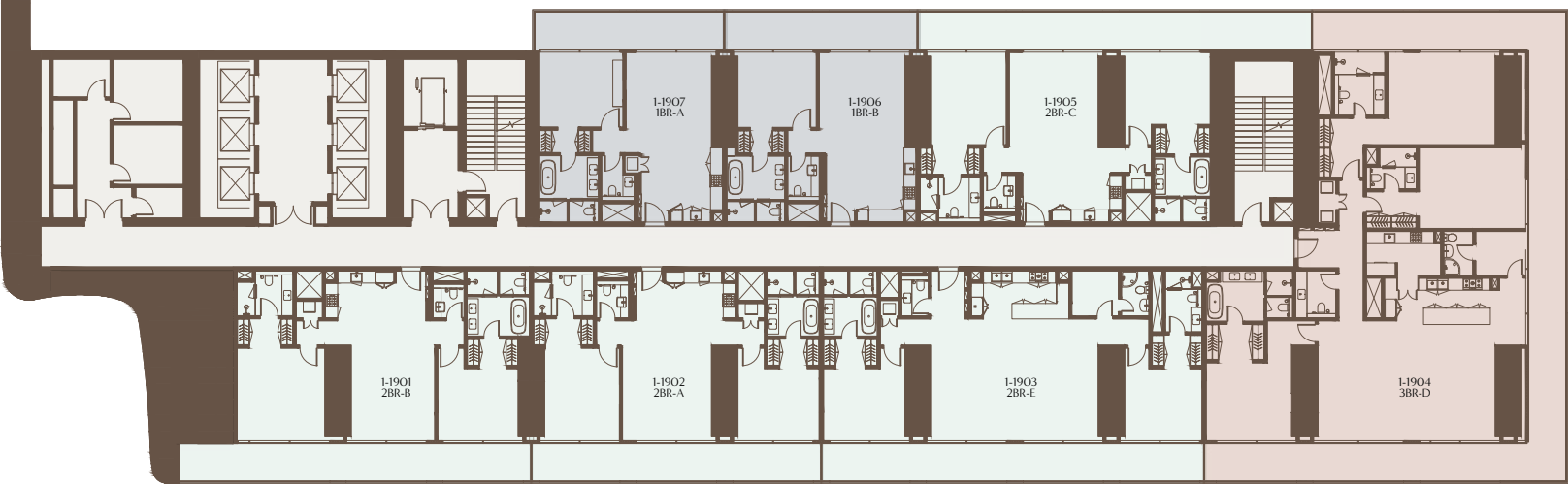
1 BEDROOM 2 BEDROOMS 3 BEDROOMS 4 BEDROOMS 5 BEDROOMS 6 BEDROOMS



1-Measurements are indicative 'finish to finish' in Metric & Imperial excluding construction tolerance. 2-Plot/unit dimensions may vary from brochure, and unit types/plans may exist as mirrored versions; 3-All images used are for illustrative purposes only. 4-Unless stated otherwise, all fittings and interior decorative items shown are for illustrative purposes only. 5-The developer reserves the right to make alterations, at its absolute discretion, without any liability whatsoever up to the final 'as built' status.

19<sup>TH</sup> TO 29<sup>TH</sup> FLOOR PLAN

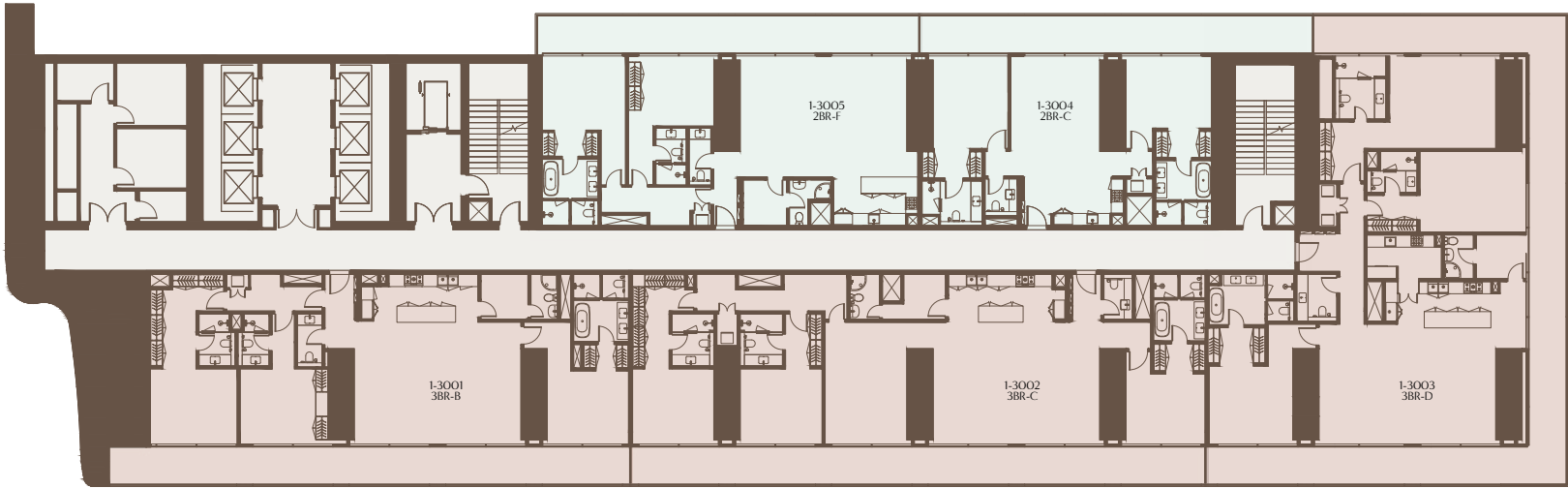
1 BEDROOM 2 BEDROOMS 3 BEDROOMS 4 BEDROOMS 5 BEDROOMS 6 BEDROOMS



1-Measurements are indicative 'finish to finish' in Metric & Imperial excluding construction tolerance. 2-Plot/unit dimensions may vary from brochure, and unit types/plans may exist as mirrored versions; 3-All images used are for illustrative purposes only. 4-Unless stated otherwise, all fittings and interior decorative items shown are for illustrative purposes only. 5-The developer reserves the right to make alterations, at its absolute discretion, without any liability whatsoever up to the final 'as built' status.

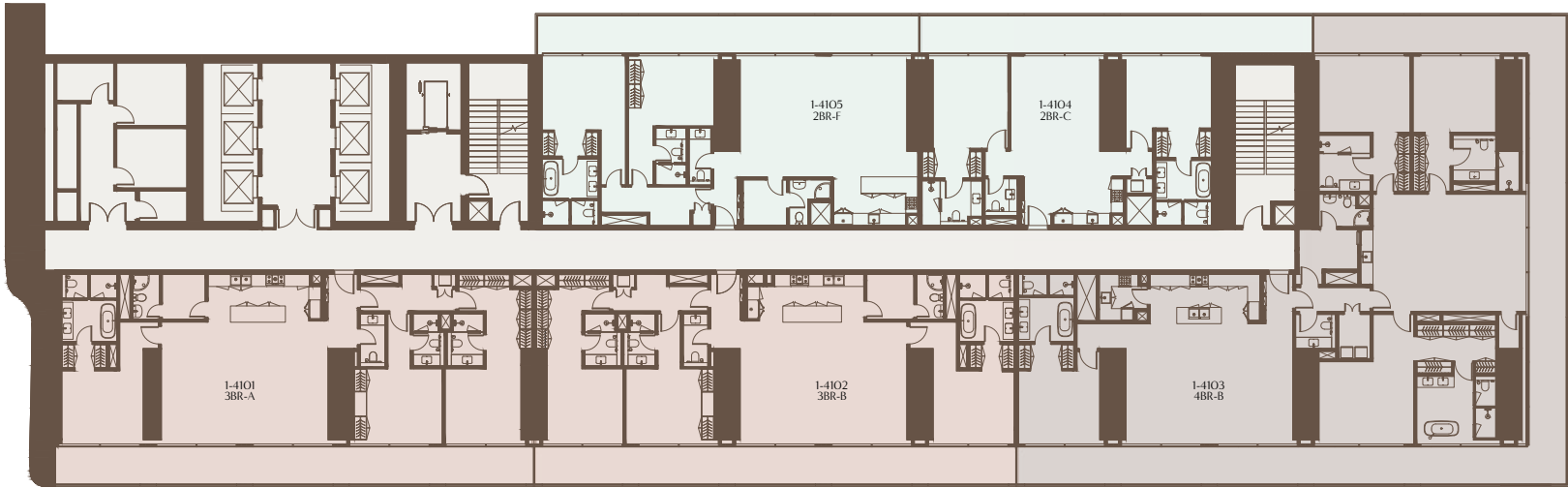
30<sup>TH</sup> TO 39<sup>TH</sup> FLOOR PLAN

1 BEDROOM 2 BEDROOMS 3 BEDROOMS 4 BEDROOMS 5 BEDROOMS 6 BEDROOMS



41<sup>ST</sup> TO 47<sup>TH</sup> FLOOR PLAN

1 BEDROOM 2 BEDROOMS 3 BEDROOMS 4 BEDROOMS 5 BEDROOMS 6 BEDROOMS

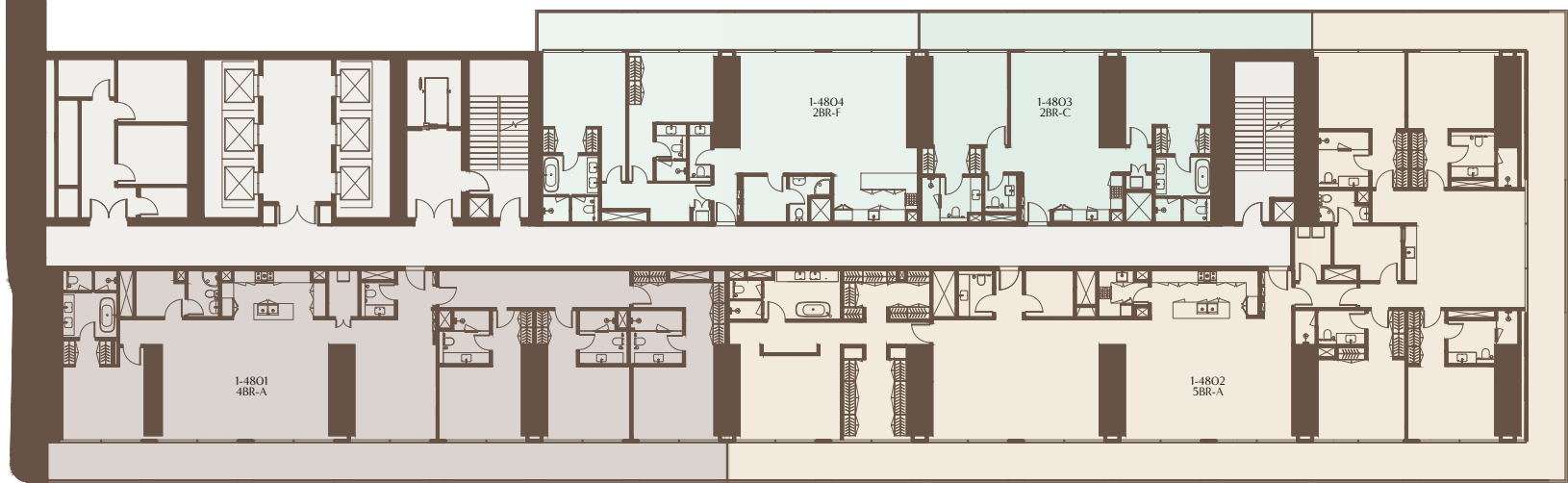


1-Measurements are indicative 'finish to finish' in Metric & Imperial excluding construction tolerance. 2-Plot/unit dimensions may vary from brochure, and unit types/plans may exist as mirrored versions; 3-All images used are for illustrative purposes only. 4-Unless stated otherwise, all fittings and interior decorative items shown are for illustrative purposes only. 5-The developer reserves the right to make alterations, at its absolute discretion, without any liability whatsoever up to the final 'as built' status.

1-Measurements are indicative 'finish to finish' in Metric & Imperial excluding construction tolerance. 2-Plot/unit dimensions may vary from brochure, and unit types/plans may exist as mirrored versions; 3-All images used are for illustrative purposes only. 4-Unless stated otherwise, all fittings and interior decorative items shown are for illustrative purposes only. 5-The developer reserves the right to make alterations, at its absolute discretion, without any liability whatsoever up to the final 'as built' status.

48<sup>TH</sup> TO 49<sup>TH</sup> FLOOR PLAN

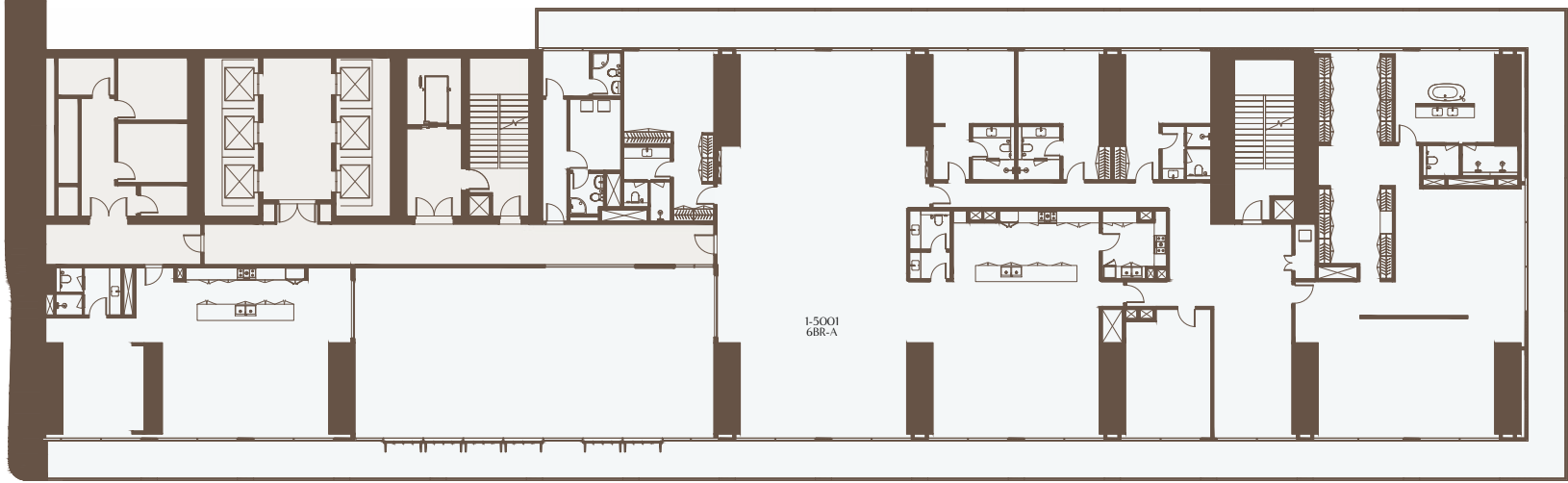
- 1 BEDROOM
- 2 BEDROOMS
- 3 BEDROOMS
- 4 BEDROOMS
- 5 BEDROOMS
- 6 BEDROOMS



1-Measurements are indicative 'finish to finish' in Metric & Imperial excluding construction tolerance. 2-Plot/unit dimensions may vary from brochure, and unit types/plans may exist as mirrored versions; 3-All images used are for illustrative purposes only. 4-Unless stated otherwise, all fittings and interior decorative items shown are for illustrative purposes only. 5-The developer reserves the right to make alterations, at its absolute discretion, without any liability whatsoever up to the final 'as built' status.

50<sup>TH</sup> FLOOR PLAN

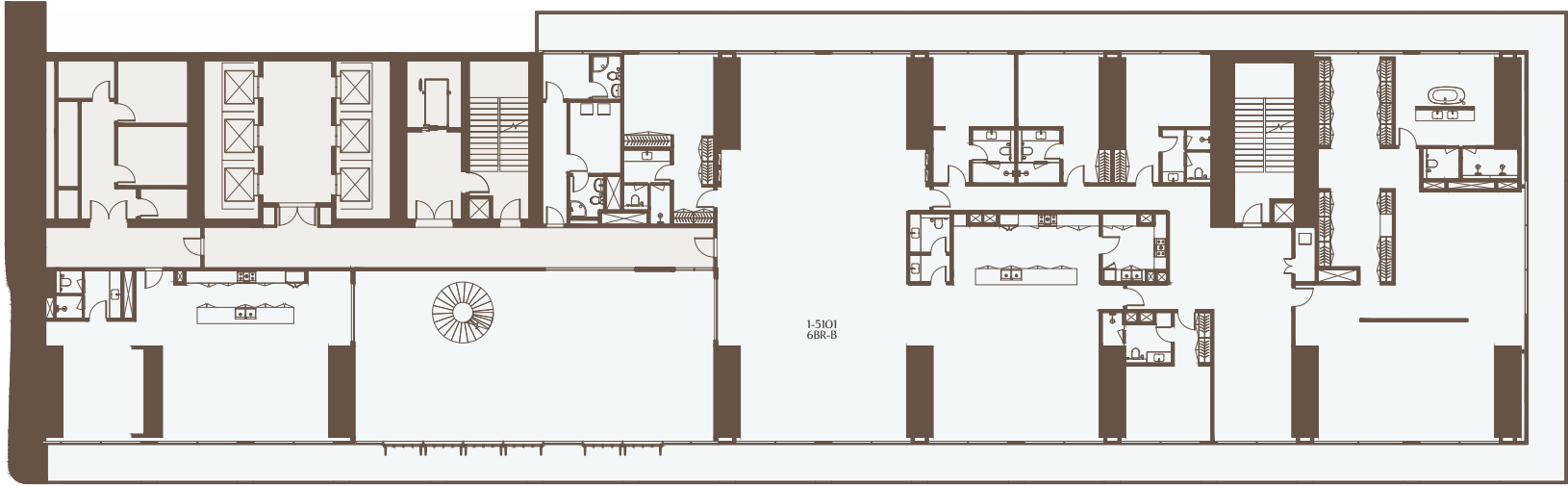
- 1 BEDROOM
- 2 BEDROOMS
- 3 BEDROOMS
- 4 BEDROOMS
- 5 BEDROOMS
- 6 BEDROOMS



1-Measurements are indicative 'finish to finish' in Metric & Imperial excluding construction tolerance. 2-Plot/unit dimensions may vary from brochure, and unit types/plans may exist as mirrored versions; 3-All images used are for illustrative purposes only. 4-Unless stated otherwise, all fittings and interior decorative items shown are for illustrative purposes only. 5-The developer reserves the right to make alterations, at its absolute discretion, without any liability whatsoever up to the final 'as built' status.

51<sup>ST</sup> FLOOR PLAN

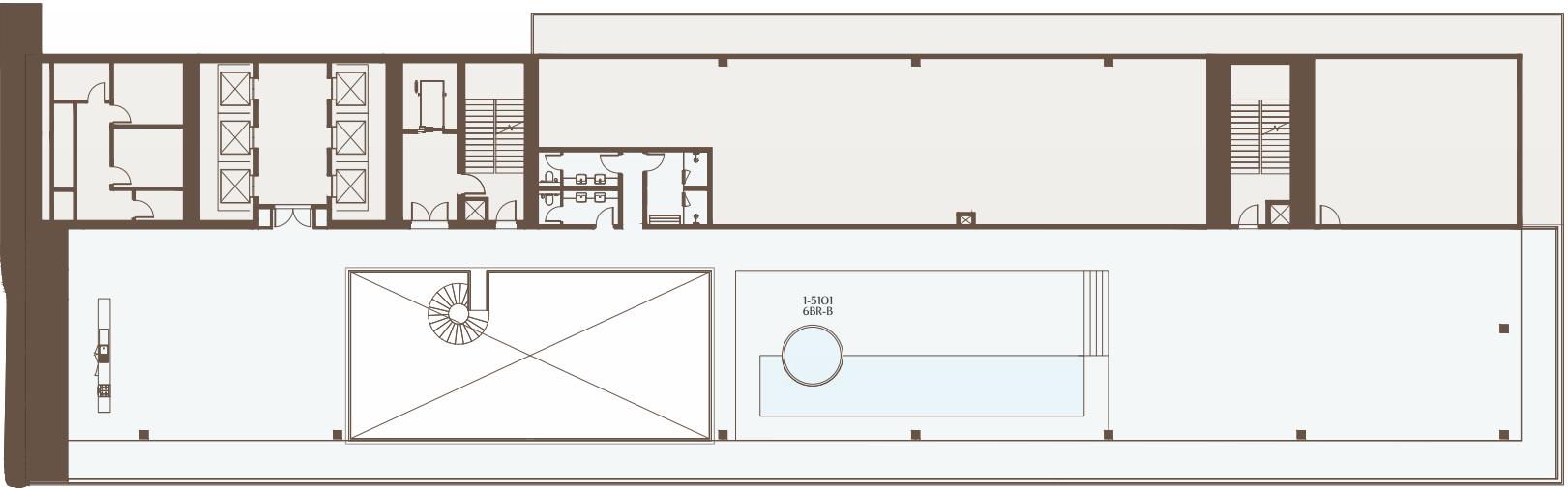
1 BEDROOM 2 BEDROOMS 3 BEDROOMS 4 BEDROOMS 5 BEDROOMS 6 BEDROOMS



1-Measurements are indicative 'finish to finish' in Metric & Imperial excluding construction tolerance. 2-Plot/unit dimensions may vary from brochure, and unit types/plans may exist as mirrored versions; 3-All images used are for illustrative purposes only. 4-Unless stated otherwise, all fittings and interior decorative items shown are for illustrative purposes only. 5-The developer reserves the right to make alterations, at its absolute discretion, without any liability whatsoever up to the final 'as built' status.

ROOF FLOOR PLAN

1 BEDROOM 2 BEDROOMS 3 BEDROOMS 4 BEDROOMS 5 BEDROOMS 6 BEDROOMS

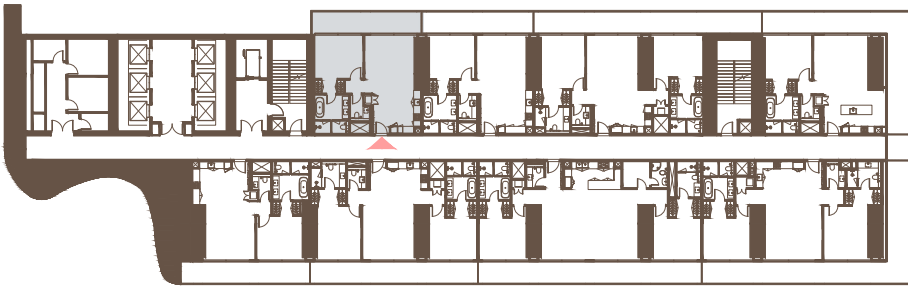
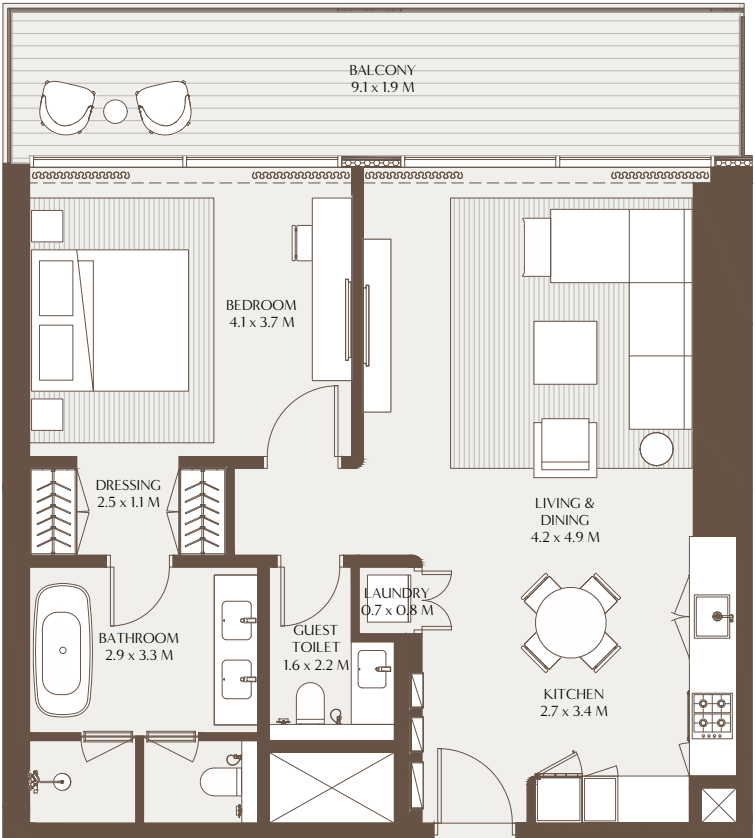


1-Measurements are indicative 'finish to finish' in Metric & Imperial excluding construction tolerance. 2-Plot/unit dimensions may vary from brochure, and unit types/plans may exist as mirrored versions; 3-All images used are for illustrative purposes only. 4-Unless stated otherwise, all fittings and interior decorative items shown are for illustrative purposes only. 5-The developer reserves the right to make alterations, at its absolute discretion, without any liability whatsoever up to the final 'as built' status.



The Elements - 1 Bedroom Residence A

Unit Area: 78.47 Sqm (844.65 Sqft) | Balcony Area: 17.78 Sqm (191.36 Sqft) | Total Area: 96.25 Sqm (1,036.01 Sqft)

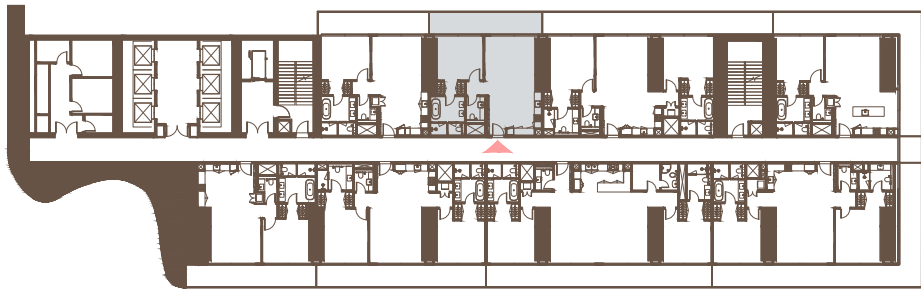
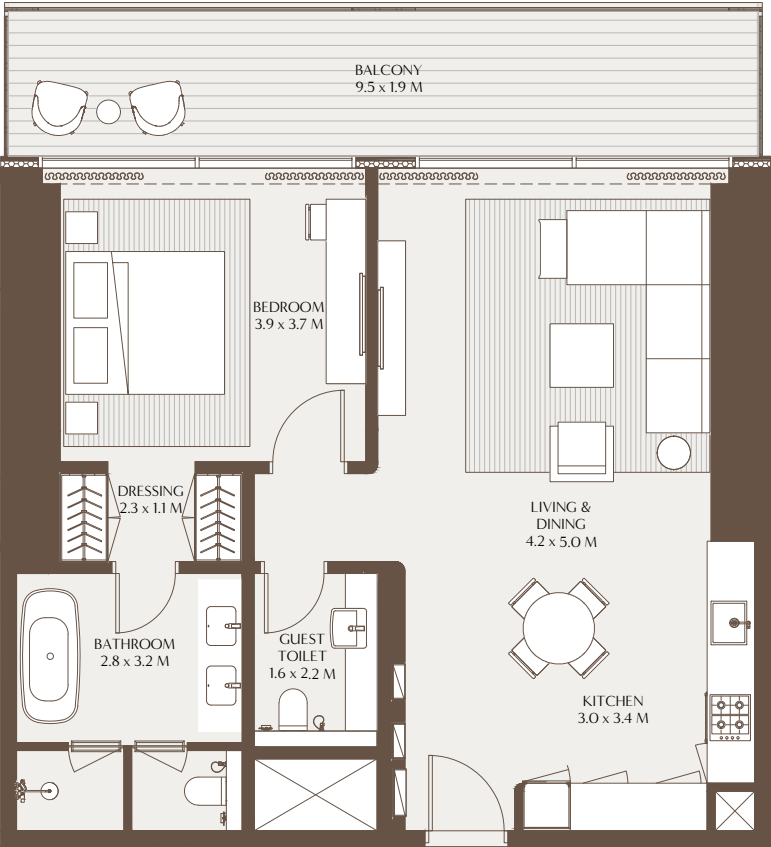


4TH TO 17TH, 19TH TO 29TH FLOOR



The Elements - 1 Bedroom Residence B

Unit Area: 79.08 Sqm (851.21 Sqft) | Balcony Area: 17.92 Sqm (192.89 Sqft) | Total Area: 97.00 Sqm (1,044.10 Sqft)



4TH TO 17TH, 19TH TO 29TH FLOOR

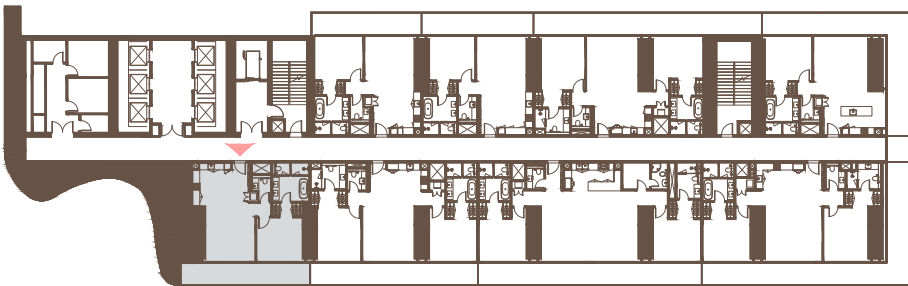
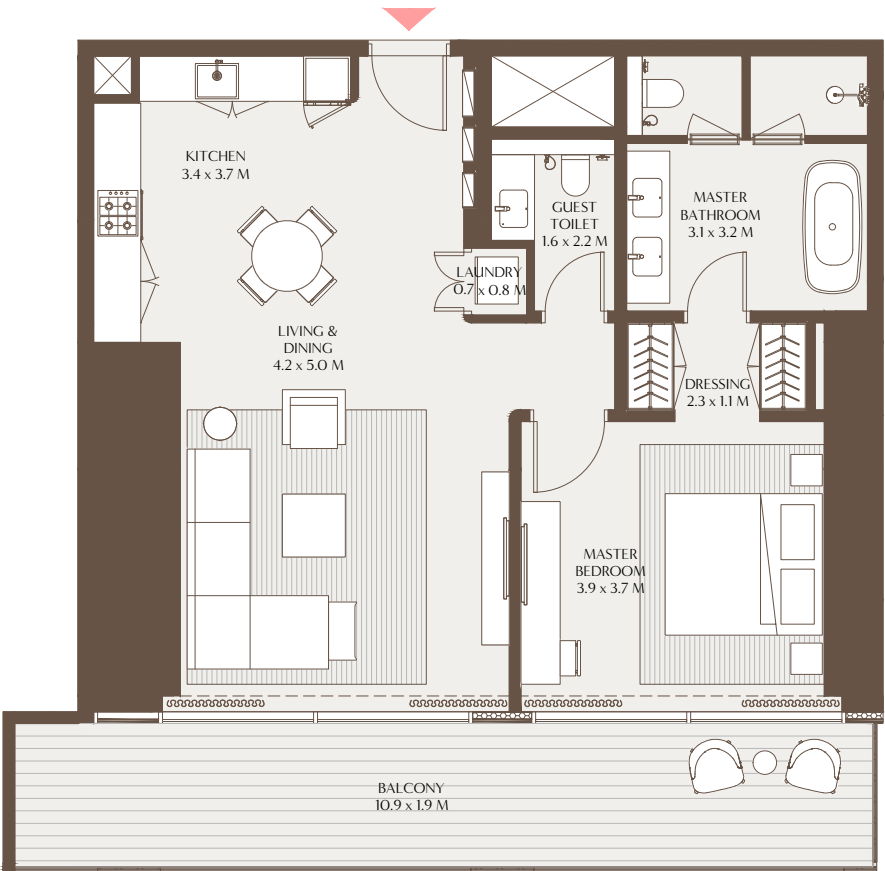


1-Measurements are indicative 'finish to finish' in Metric & Imperial excluding construction tolerance. 2-Plot/unit dimensions may vary from brochure, and unit types/plans may exist as mirrored versions; 3-All images used are for illustrative purposes only. 4-Unless stated otherwise, all fittings and interior decorative items shown are for illustrative purposes only. 5-The developer reserves the right to make alterations, at its absolute discretion, without any liability whatsoever up to the final 'as built' status.

1-Measurements are indicative 'finish to finish' in Metric & Imperial excluding construction tolerance. 2-Plot/unit dimensions may vary from brochure, and unit types/plans may exist as mirrored versions; 3-All images used are for illustrative purposes only. 4-Unless stated otherwise, all fittings and interior decorative items shown are for illustrative purposes only. 5-The developer reserves the right to make alterations, at its absolute discretion, without any liability whatsoever up to the final 'as built' status.

The Elements - 1 Bedroom Residence C

Unit Area: 80.82 Sqm (869.94 Sqft) | Balcony Area: 31.01 Sqm (333.79 Sqft) | Total Area: 111.83 Sqm (1,203.73 Sqft)

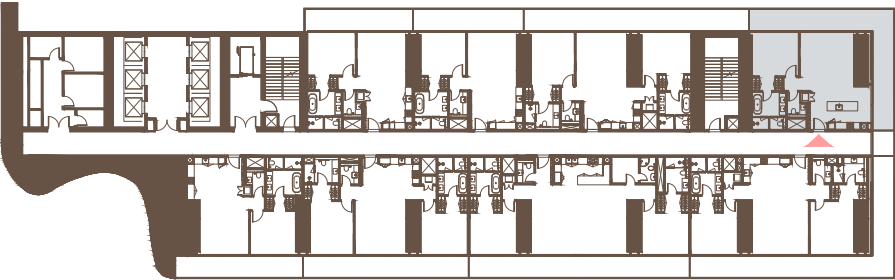
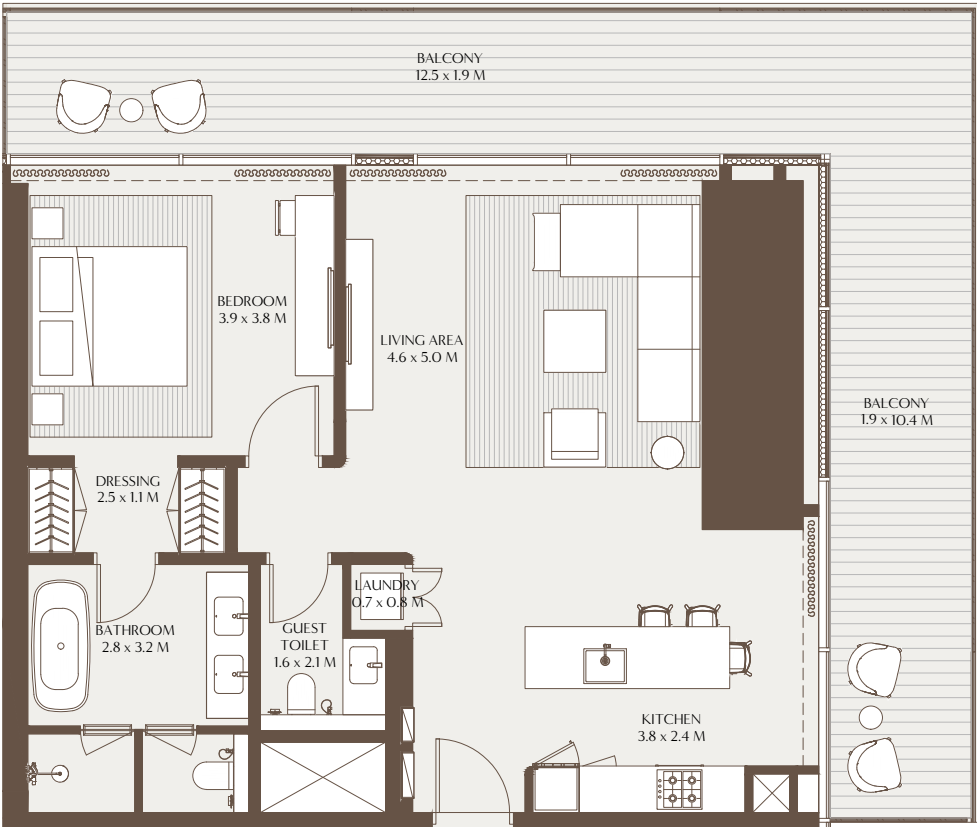


4TH TO 17TH FLOOR



The Elements - 1 Bedroom Residence D

Unit Area: 91.01 Sqm (979.62 Sqft) | Balcony Area: 39.68 Sqm (427.11 Sqft) | Total Area: 130.69 Sqm (1,406.73 Sqft)



4TH TO 17TH FLOOR

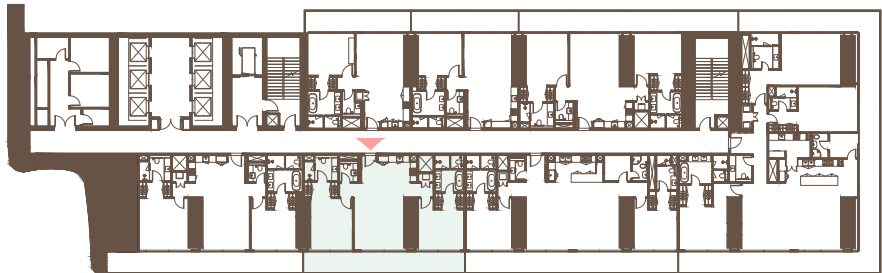
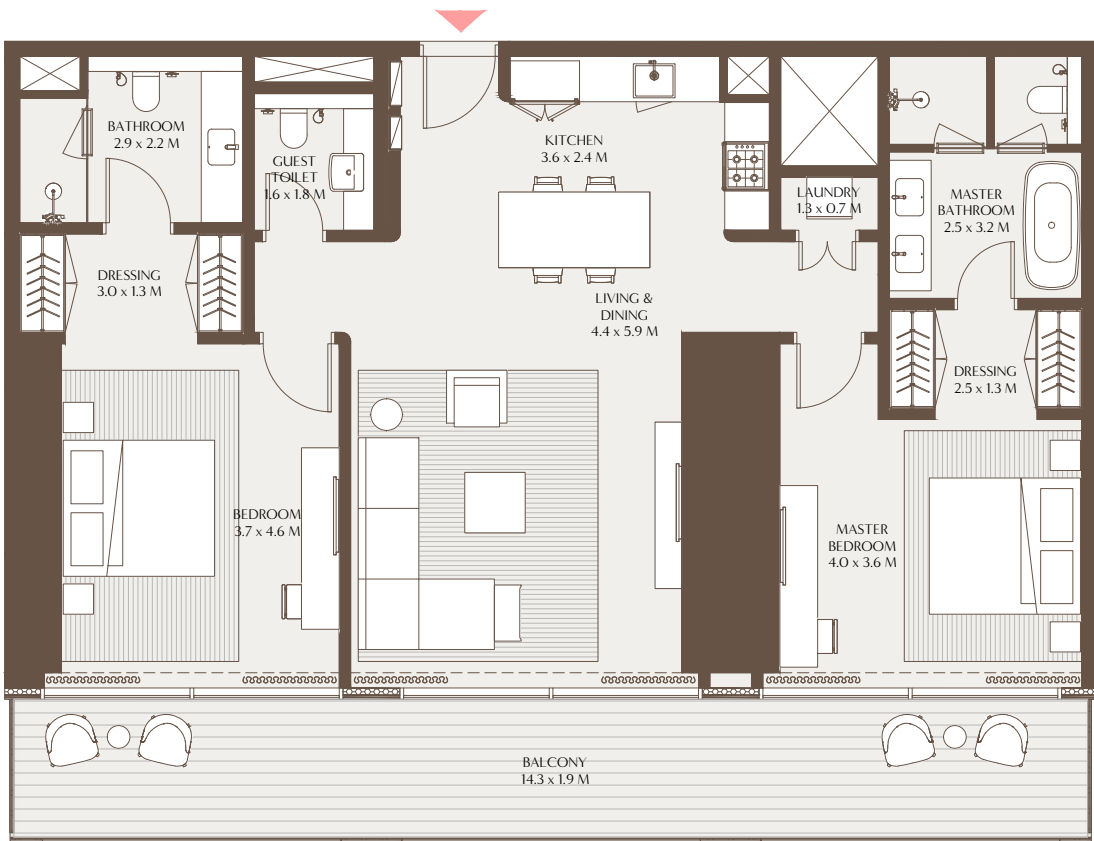


1-Measurements are indicative 'finish to finish' in Metric & Imperial excluding construction tolerance. 2-Plot/unit dimensions may vary from brochure, and unit types/plans may exist as mirrored versions; 3-All images used are for illustrative purposes only. 4-Unless stated otherwise, all fittings and interior decorative items shown are for illustrative purposes only. 5-The developer reserves the right to make alterations, at its absolute discretion, without any liability whatsoever up to the final 'as built' status.

1-Measurements are indicative 'finish to finish' in Metric & Imperial excluding construction tolerance. 2-Plot/unit dimensions may vary from brochure, and unit types/plans may exist as mirrored versions; 3-All images used are for illustrative purposes only. 4-Unless stated otherwise, all fittings and interior decorative items shown are for illustrative purposes only. 5-The developer reserves the right to make alterations, at its absolute discretion, without any liability whatsoever up to the final 'as built' status.

The Elements - 2 Bedroom Residence A

Unit Area: 117.75 Sqm (1,267.48 Sqft) | Balcony Area: 26.88 Sqm (289.29 Sqft) | Total Area: 144.63 Sqm (1,556.77 Sqft)



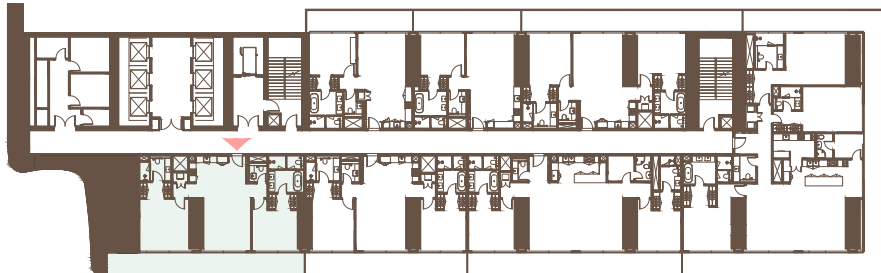
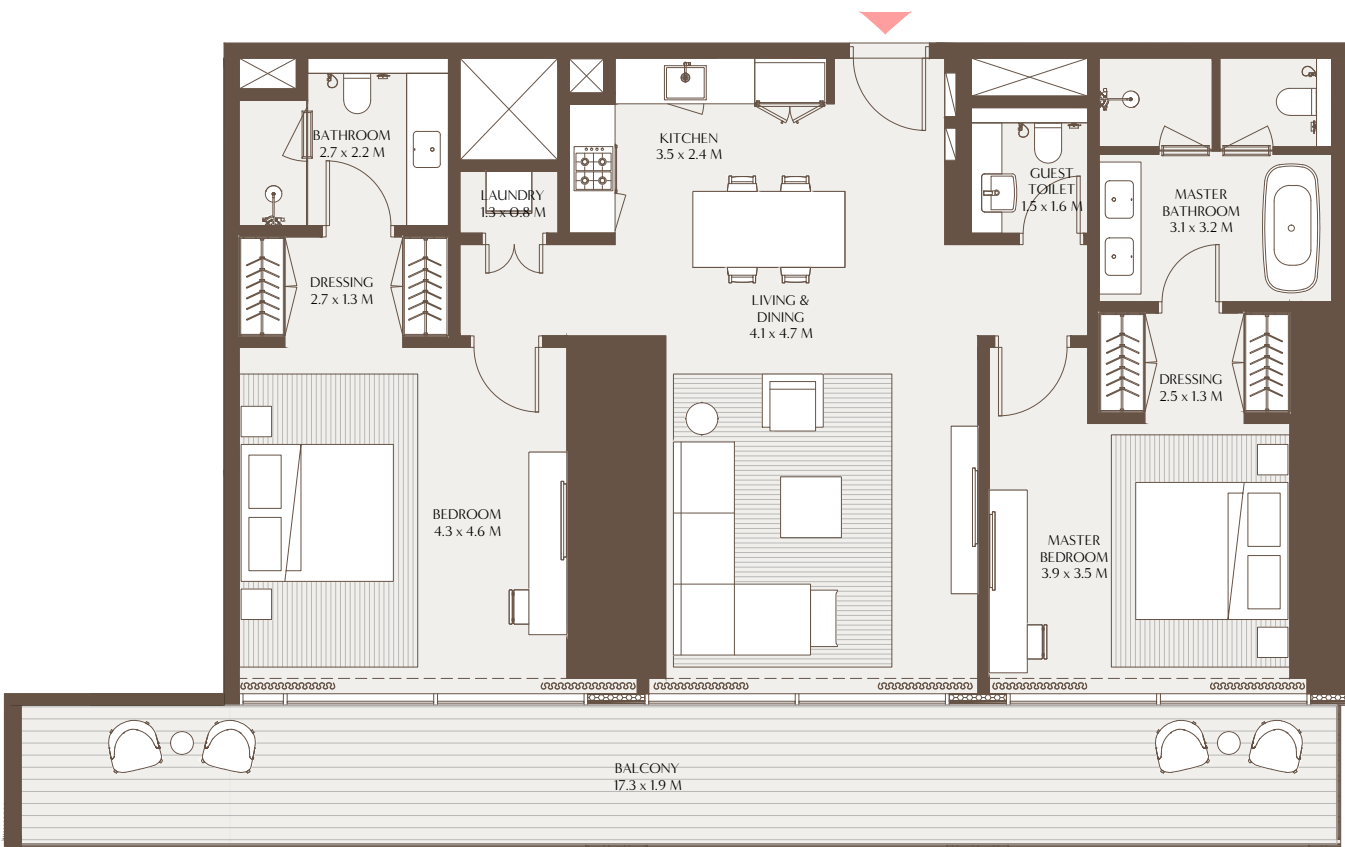
4TH TO 17TH & 19TH TO 29TH FLOOR



1-Measurements are indicative 'finish to finish' in Metric & Imperial excluding construction tolerance. 2-Plot/unit dimensions may vary from brochure, and unit types/plans may exist as mirrored versions; 3-All images used are for illustrative purposes only. 4-Unless stated otherwise, all fittings and interior decorative items shown are for illustrative purposes only. 5-The developer reserves the right to make alterations, at its absolute discretion, without any liability whatsoever up to the final 'as built' status.

The Elements - 2 Bedroom Residence B

Unit Area: 120.39 Sqm (1,295.88 Sqft) | Balcony Area: 32.90 Sqm (354.08 Sqft) | Total Area: 153.29 Sqm (1,649.96 Sqft)



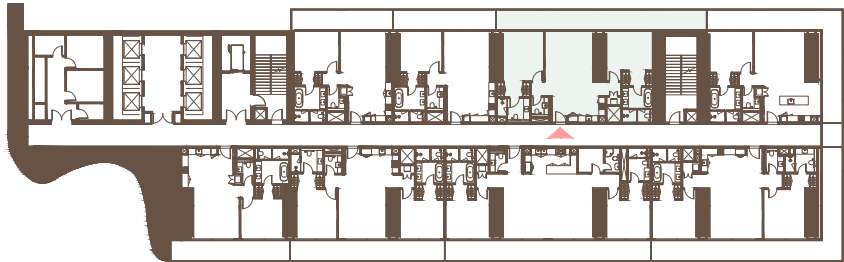
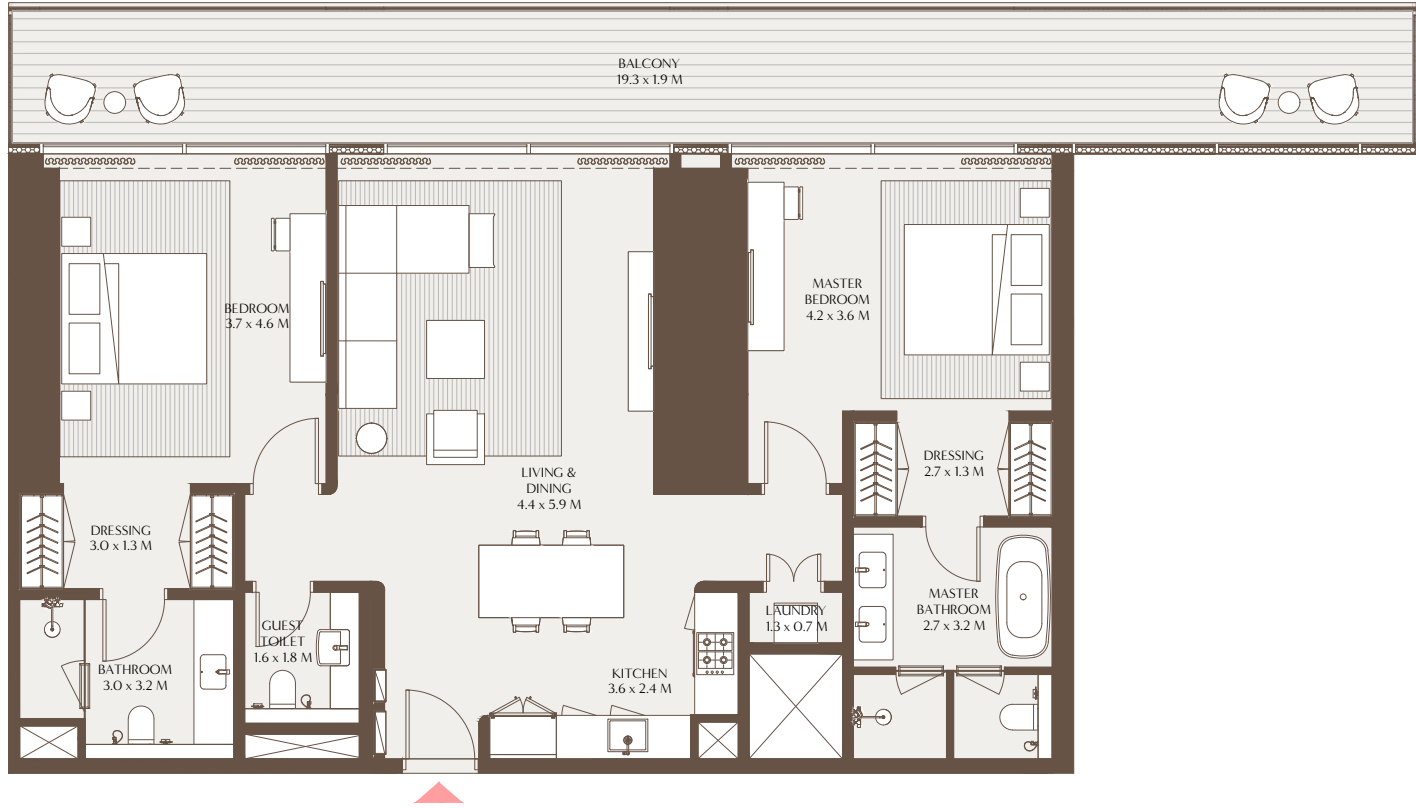
19TH TO 29TH FLOOR



1-Measurements are indicative 'finish to finish' in Metric & Imperial excluding construction tolerance. 2-Plot/unit dimensions may vary from brochure, and unit types/plans may exist as mirrored versions; 3-All images used are for illustrative purposes only. 4-Unless stated otherwise, all fittings and interior decorative items shown are for illustrative purposes only. 5-The developer reserves the right to make alterations, at its absolute discretion, without any liability whatsoever up to the final 'as built' status.

The Elements - 2 Bedroom Residence C

Unit Area: 123.69 Sqm (1,331.41 Sqft) | Balcony Area: 36.55 Sqm (393.39 Sqft) | Total Area: 160.24 Sqm (1,724.80 Sqft)

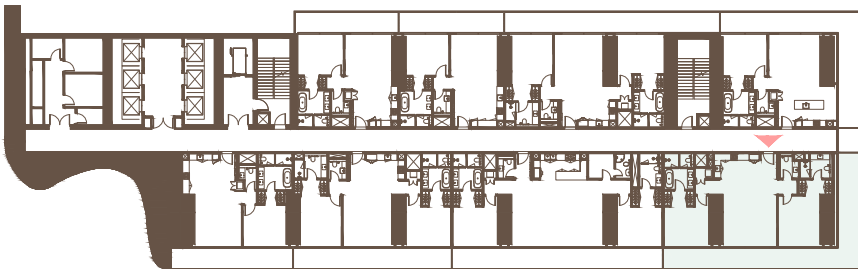
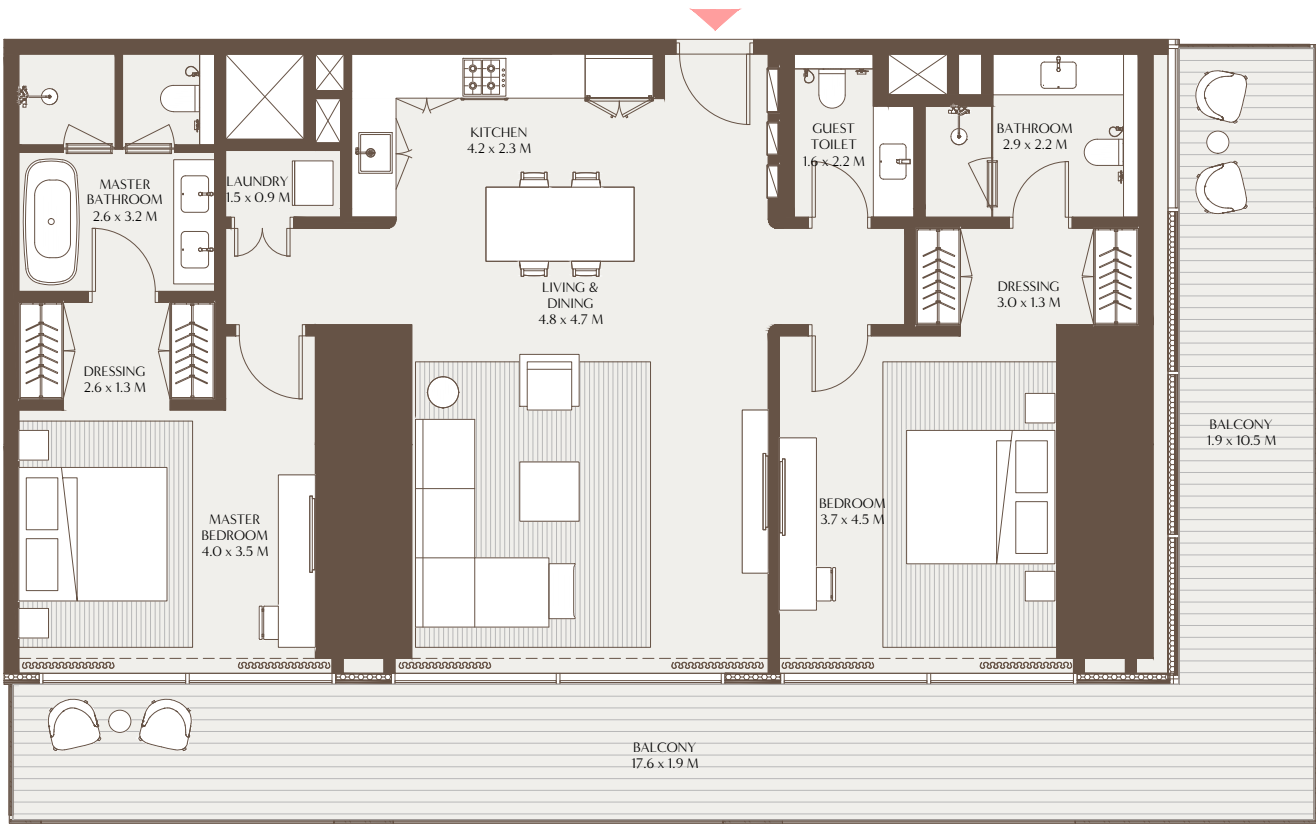


4TH TO 17TH, 19TH TO 29TH, 30TH TO 39TH,  
41ST TO 47TH, 48TH TO 49TH FLOOR



The Elements - 2 Bedroom Residence D

Unit Area: 131.90 Sqm (1,419.73 Sqft) | Balcony Area: 49.33 Sqm (531.03 Sqft) | Total Area: 181.23 Sqm (1,950.76 Sqft)



4TH TO 17TH FLOOR

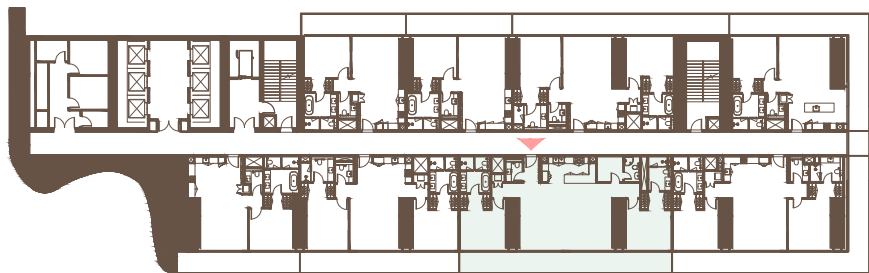
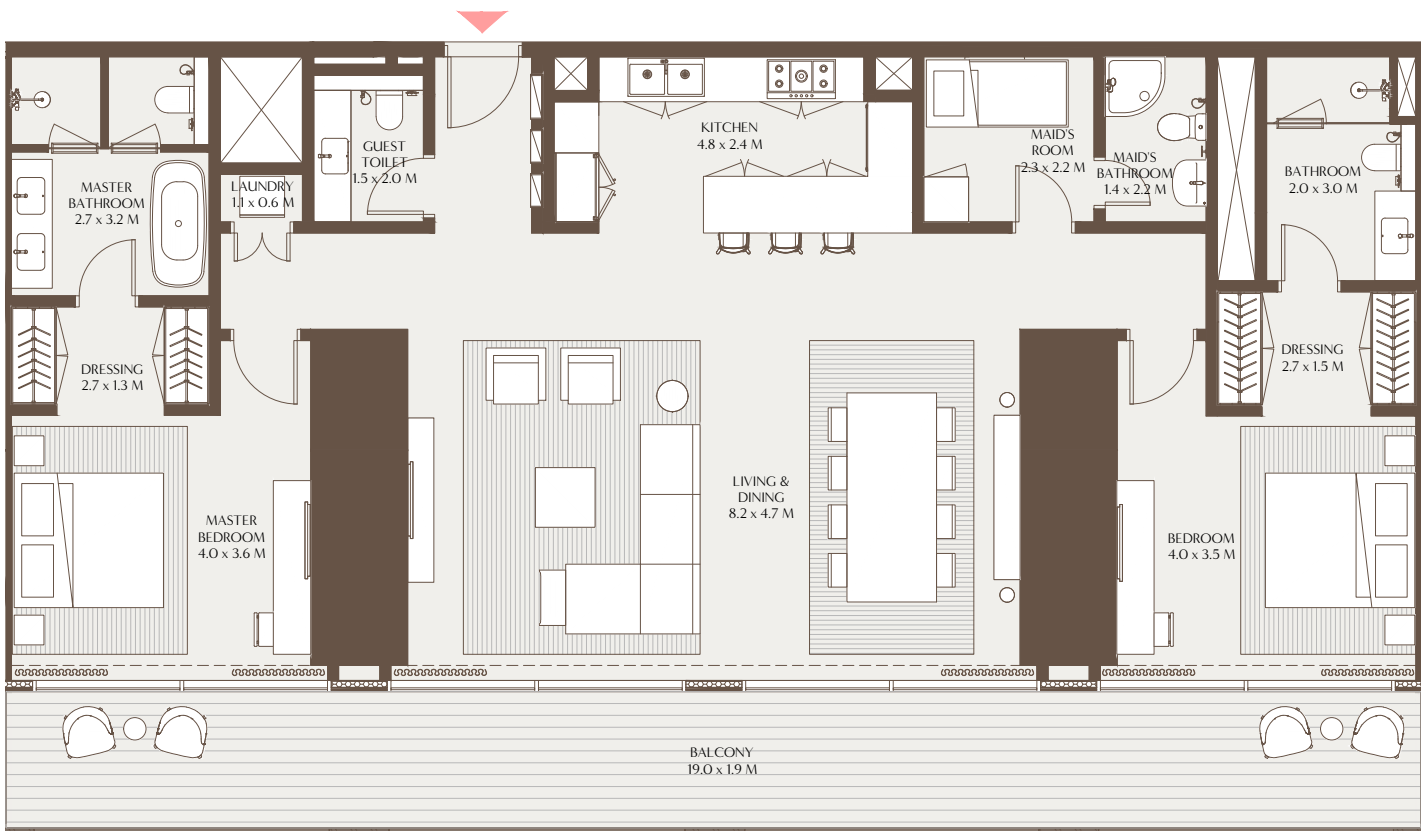


1-Measurements are indicative 'finish to finish' in Metric & Imperial excluding construction tolerance. 2-Plot/unit dimensions may vary from brochure, and unit types/plans may exist as mirrored versions; 3-All images used are for illustrative purposes only. 4-Unless stated otherwise, all fittings and interior decorative items shown are for illustrative purposes only. 5-The developer reserves the right to make alterations, at its absolute discretion, without any liability whatsoever up to the final 'as built' status.

1-Measurements are indicative 'finish to finish' in Metric & Imperial excluding construction tolerance. 2-Plot/unit dimensions may vary from brochure, and unit types/plans may exist as mirrored versions; 3-All images used are for illustrative purposes only. 4-Unless stated otherwise, all fittings and interior decorative items shown are for illustrative purposes only. 5-The developer reserves the right to make alterations, at its absolute discretion, without any liability whatsoever up to the final 'as built' status.

The Elements - 2 Bedroom Residence E

Unit Area: 157.08 Sqm (1,690.80 Sqft) | Balcony Area: 35.83 Sqm (385.67 Sqft) | Total Area: 192.91 Sqm (2,076.47 Sqft)

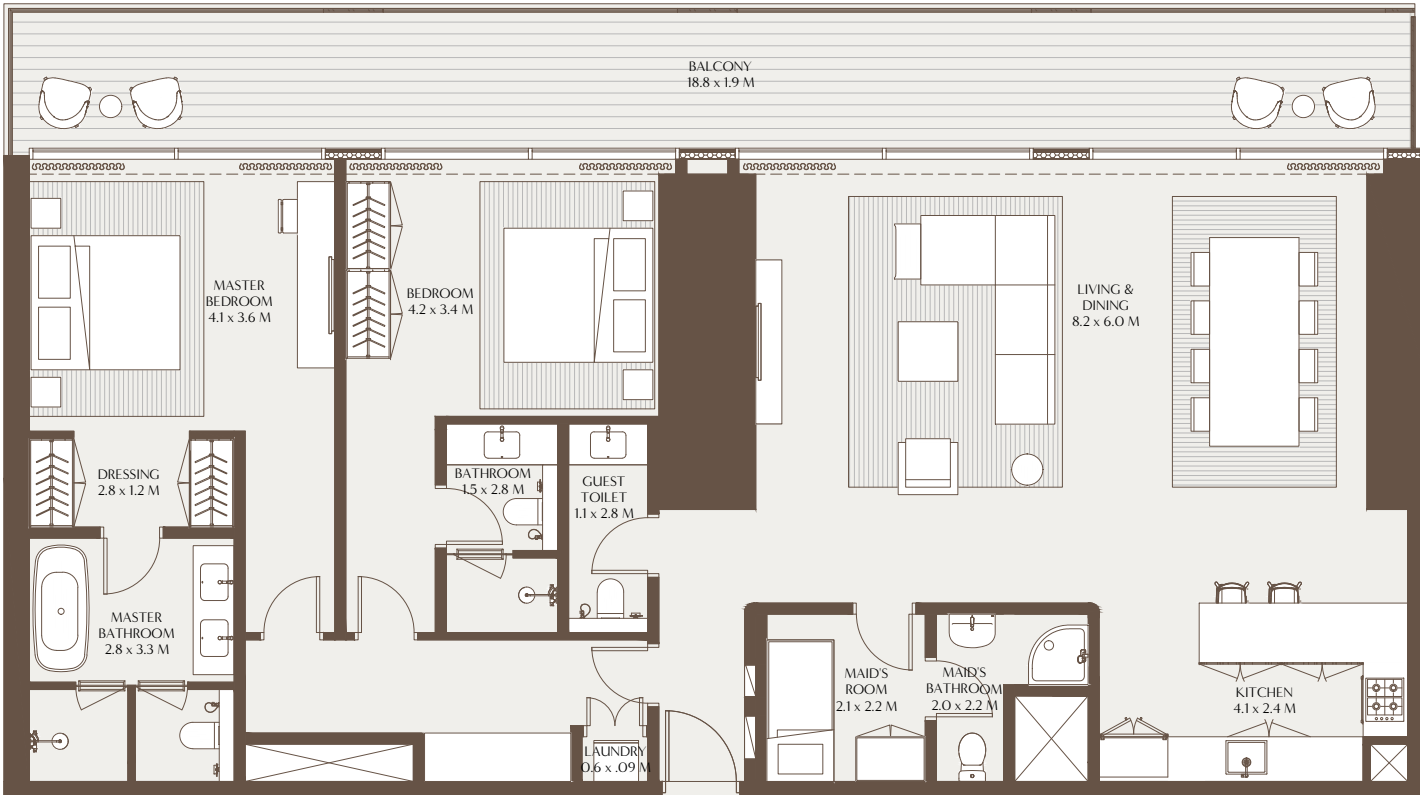


4TH TO 17TH, 19TH TO 29TH FLOOR



The Elements - 2 Bedroom Residence F

Unit Area: 158.52 Sqm (1,706.31 Sqft) | Balcony Area: 35.74 Sqm (384.73 Sqft) | Total Area: 194.26 Sqm (2,091.04 Sqft)



30TH TO 39TH, 41ST TO 47TH, 48TH TO 49TH FLOOR



1-Measurements are indicative 'finish to finish' in Metric & Imperial excluding construction tolerance. 2-Plot/unit dimensions may vary from brochure, and unit types/plans may exist as mirrored versions; 3-All images used are for illustrative purposes only. 4-Unless stated otherwise, all fittings and interior decorative items shown are for illustrative purposes only. 5-The developer reserves the right to make alterations, at its absolute discretion, without any liability whatsoever up to the final 'as built' status.

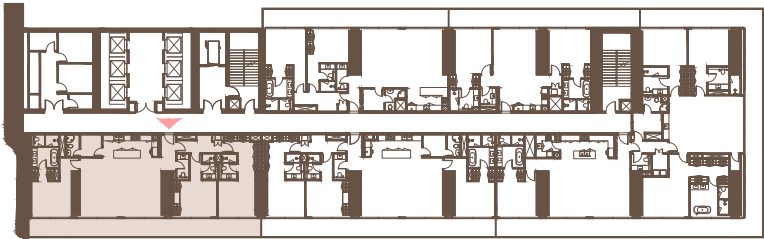
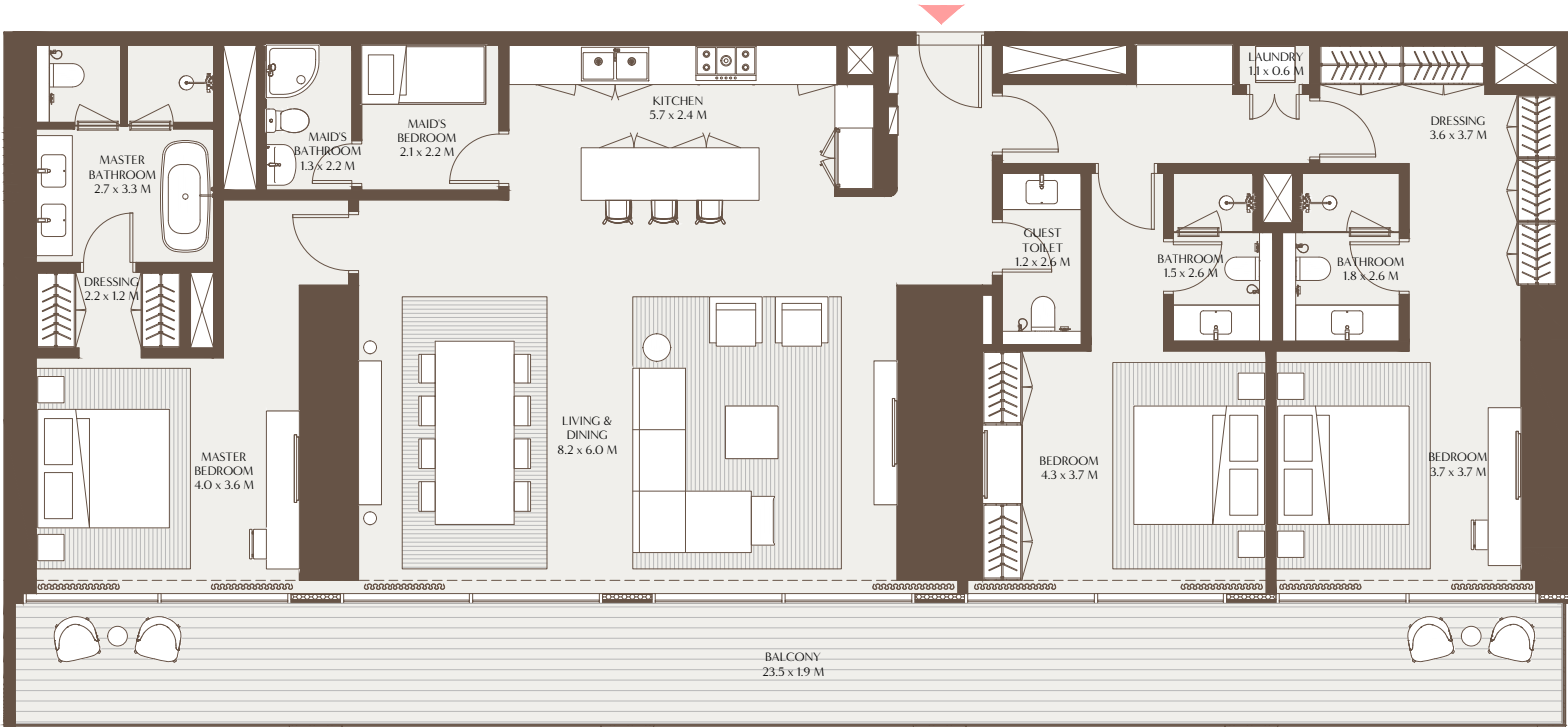
1-Measurements are indicative 'finish to finish' in Metric & Imperial excluding construction tolerance. 2-Plot/unit dimensions may vary from brochure, and unit types/plans may exist as mirrored versions; 3-All images used are for illustrative purposes only. 4-Unless stated otherwise, all fittings and interior decorative items shown are for illustrative purposes only. 5-The developer reserves the right to make alterations, at its absolute discretion, without any liability whatsoever up to the final 'as built' status.

The Elements - 3 Bedroom Residence A

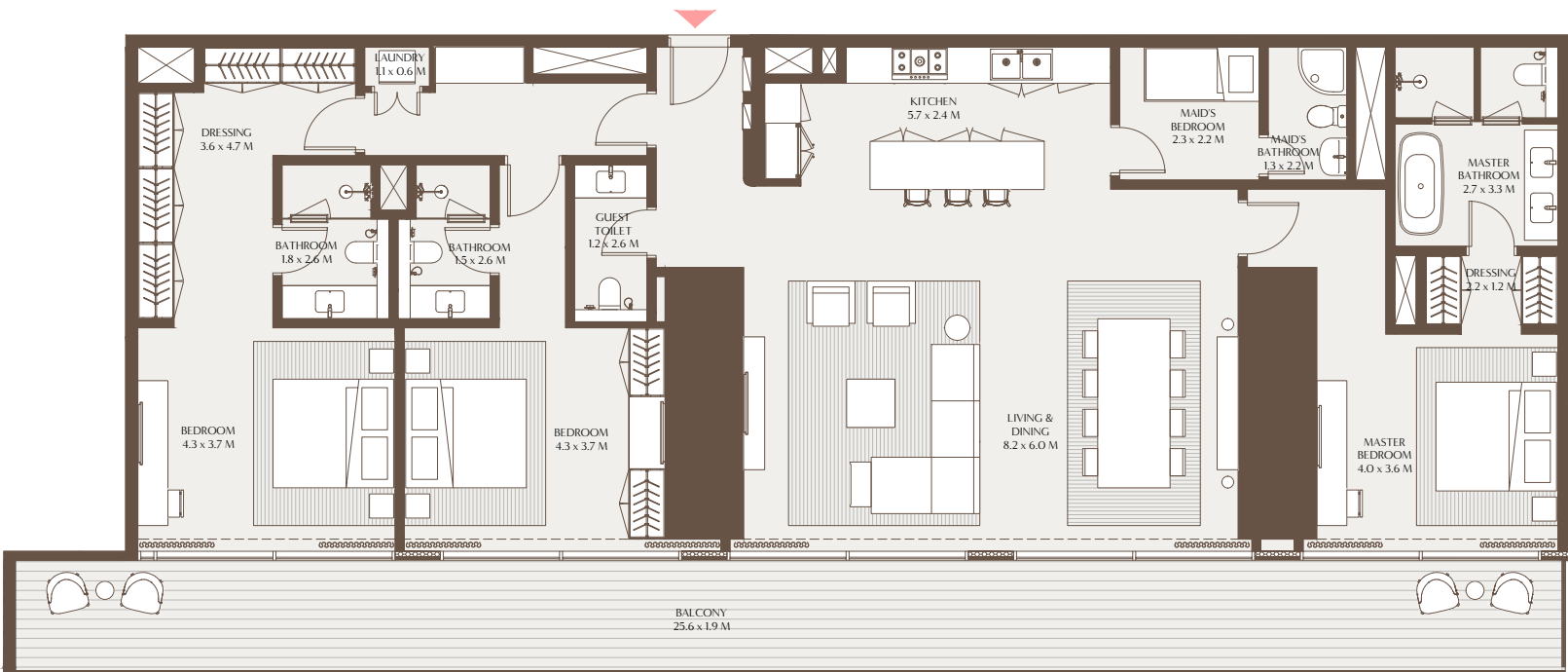
Unit Area: 195.48 Sqm (2,104.09 Sqft) | Balcony Area: 44.84 Sqm (482.62 Sqft) | Total Area: 240.31 Sqm (2,586.71 Sqft)

The Elements - 3 Bedroom Residence B

Unit Area: 197.28 Sqm (2,123.55 Sqft) | Balcony Area: 48.63 Sqm (523.45 Sqft) | Total Area: 245.91 Sqm (2,647.00 Sqft)



41ST TO 47TH FLOOR



30TH TO 39TH, 41ST TO 47TH FLOOR



1-Measurements are indicative 'finish to finish' in Metric & Imperial excluding construction tolerance. 2-Plot/unit dimensions may vary from brochure, and unit types/plans may exist as mirrored versions; 3-All images used are for illustrative purposes only. 4-Unless stated otherwise, all fittings and interior decorative items shown are for illustrative purposes only. 5-The developer reserves the right to make alterations, at its absolute discretion, without any liability whatsoever up to the final 'as built' status.

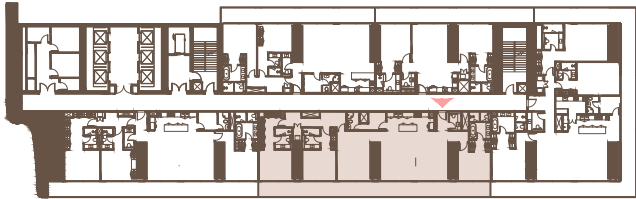
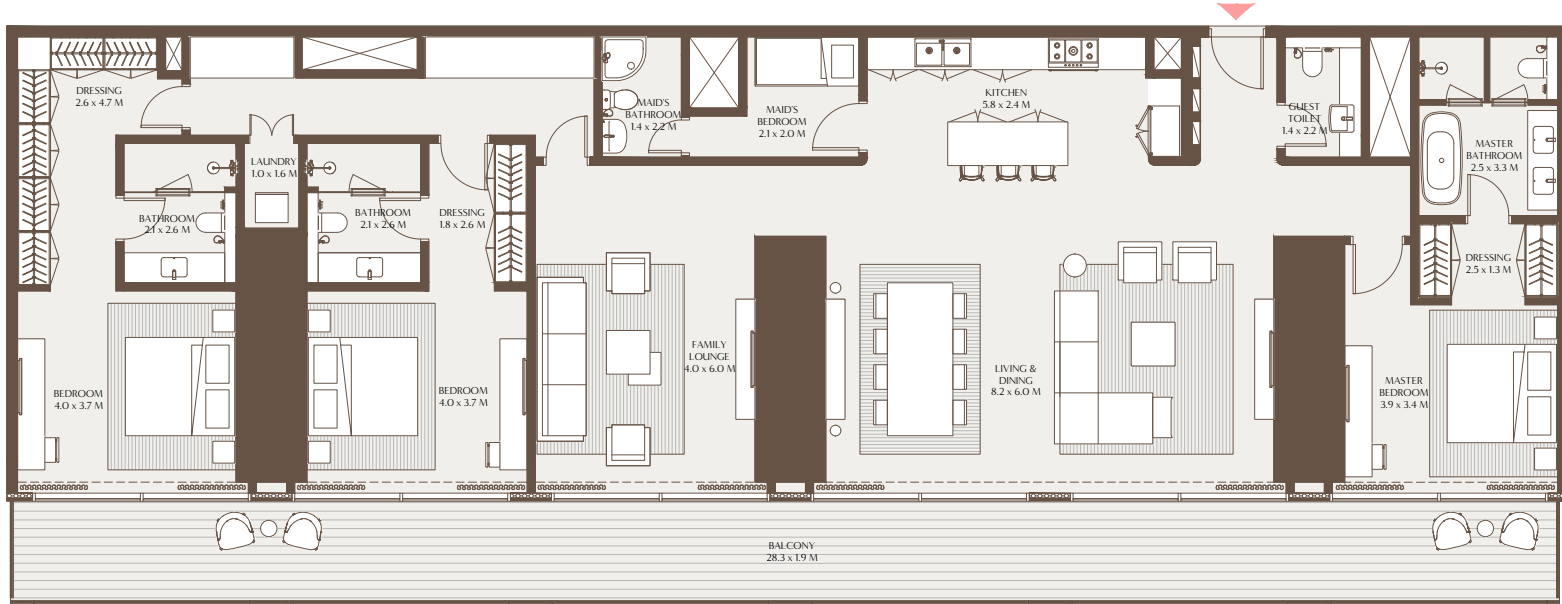


1-Measurements are indicative 'finish to finish' in Metric & Imperial excluding construction tolerance. 2-Plot/unit dimensions may vary from brochure, and unit types/plans may exist as mirrored versions; 3-All images used are for illustrative purposes only. 4-Unless stated otherwise, all fittings and interior decorative items shown are for illustrative purposes only. 5-The developer reserves the right to make alterations, at its absolute discretion, without any liability whatsoever up to the final 'as built' status.



The Elements - 3 Bedroom Residence C

Unit Area: 236.85 Sqm (2,549.44 Sqft) | Balcony Area: 53.58 Sqm (576.70 Sqft) | Total Area: 290.43 Sqm (3,126.14 Sqft)

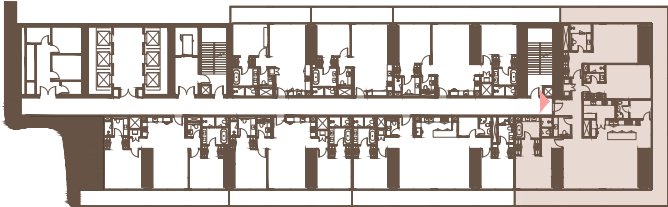
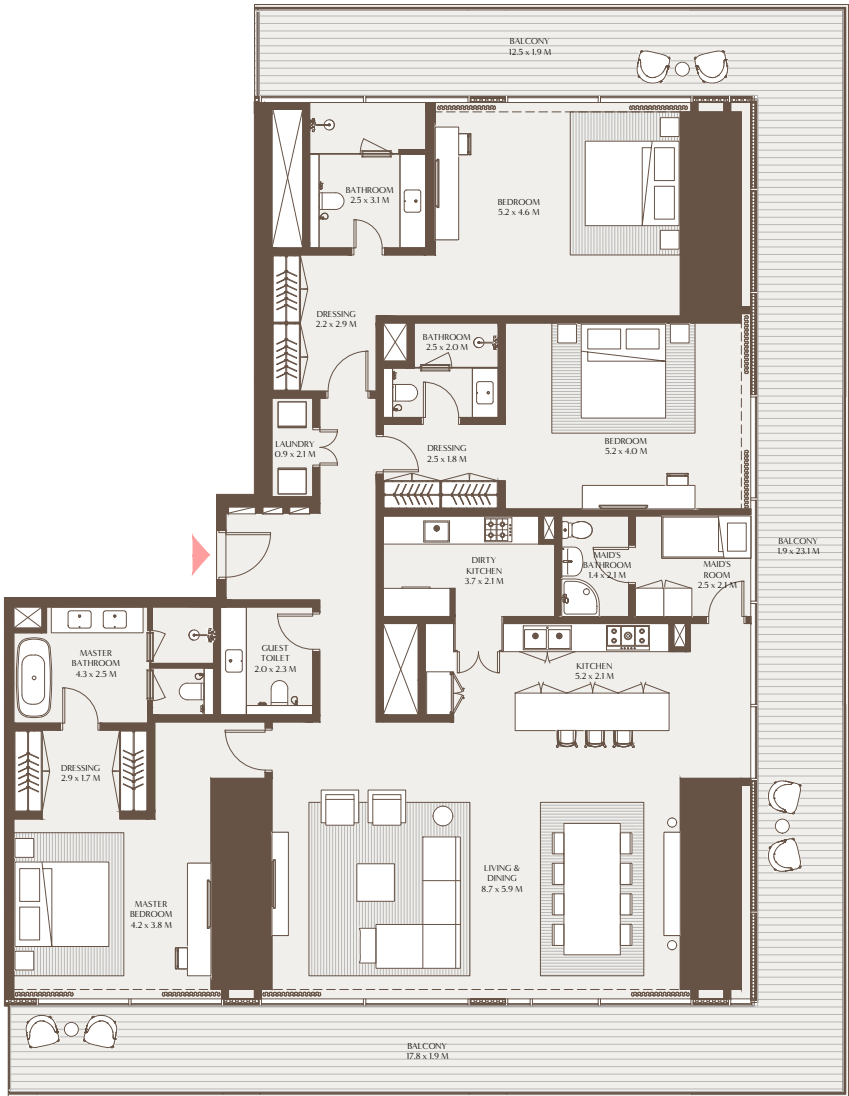


30TH TO 39TH FLOOR



The Elements - 3 Bedroom Residence D

Unit Area: 246.99 Sqm (2,658.59 Sqft) | Balcony Area: 93.49 Sqm (1,006.33 Sqft) | Total Area: 340.48 Sqm (3,664.92 Sqft)



19TH TO 29TH, 30TH TO 39TH FLOOR

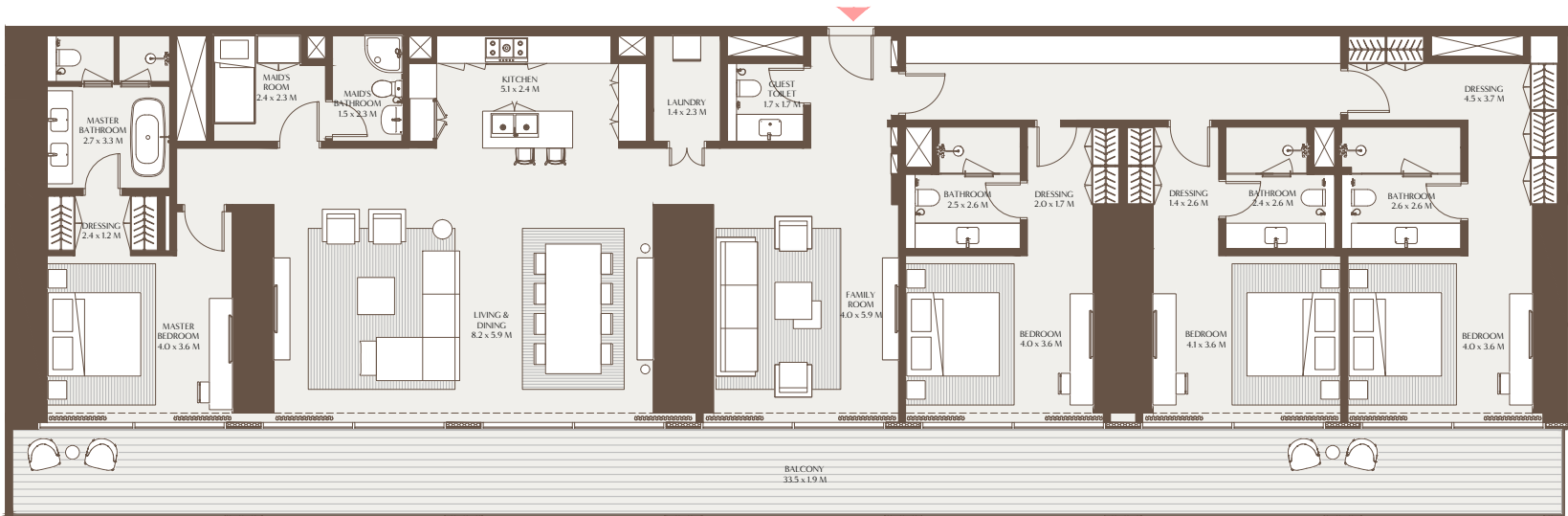


1-Measurements are indicative 'finish to finish' in Metric & Imperial excluding construction tolerance. 2-Plot/unit dimensions may vary from brochure, and unit types/plans may exist as mirrored versions; 3-All images used are for illustrative purposes only. 4-Unless stated otherwise, all fittings and interior decorative items shown are for illustrative purposes only. 5-The developer reserves the right to make alterations, at its absolute discretion, without any liability whatsoever up to the final 'as built' status.

1-Measurements are indicative 'finish to finish' in Metric & Imperial excluding construction tolerance. 2-Plot/unit dimensions may vary from brochure, and unit types/plans may exist as mirrored versions; 3-All images used are for illustrative purposes only. 4-Unless stated otherwise, all fittings and interior decorative items shown are for illustrative purposes only. 5-The developer reserves the right to make alterations, at its absolute discretion, without any liability whatsoever up to the final 'as built' status.

The Collections - 4 Bedroom Residence A

Unit Area: 275.43 Sqm (2,964.66 Sqft) | Balcony Area: 63.48 Sqm (683.28 Sqft) | Total Area: 338.91 Sqm (3,647.94 Sqft)



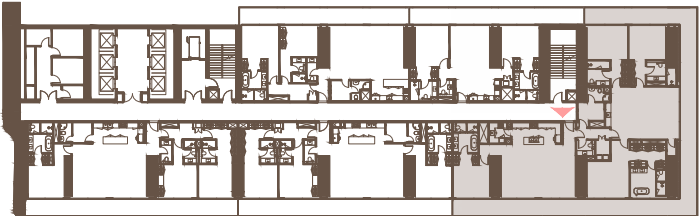
48TH TO 49TH FLOOR



1-Measurements are indicative 'finish to finish' in Metric & Imperial excluding construction tolerance. 2-Plot/unit dimensions may vary from brochure, and unit types/plans may exist as mirrored versions; 3-All images used are for illustrative purposes only. 4-Unless stated otherwise, all fittings and interior decorative items shown are for illustrative purposes only. 5-The developer reserves the right to make alterations, at its absolute discretion, without any liability whatsoever up to the final 'as built' status.

The Collections - 4 Bedroom Residence B

Unit Area: 325.38 Sqm (3,502.35 Sqft) | Balcony Area: 111.06 Sqm (1,195.45 Sqft) | Total Area: 436.44 Sqm (4,697.80 Sqft)



41ST TO 47TH FLOOR

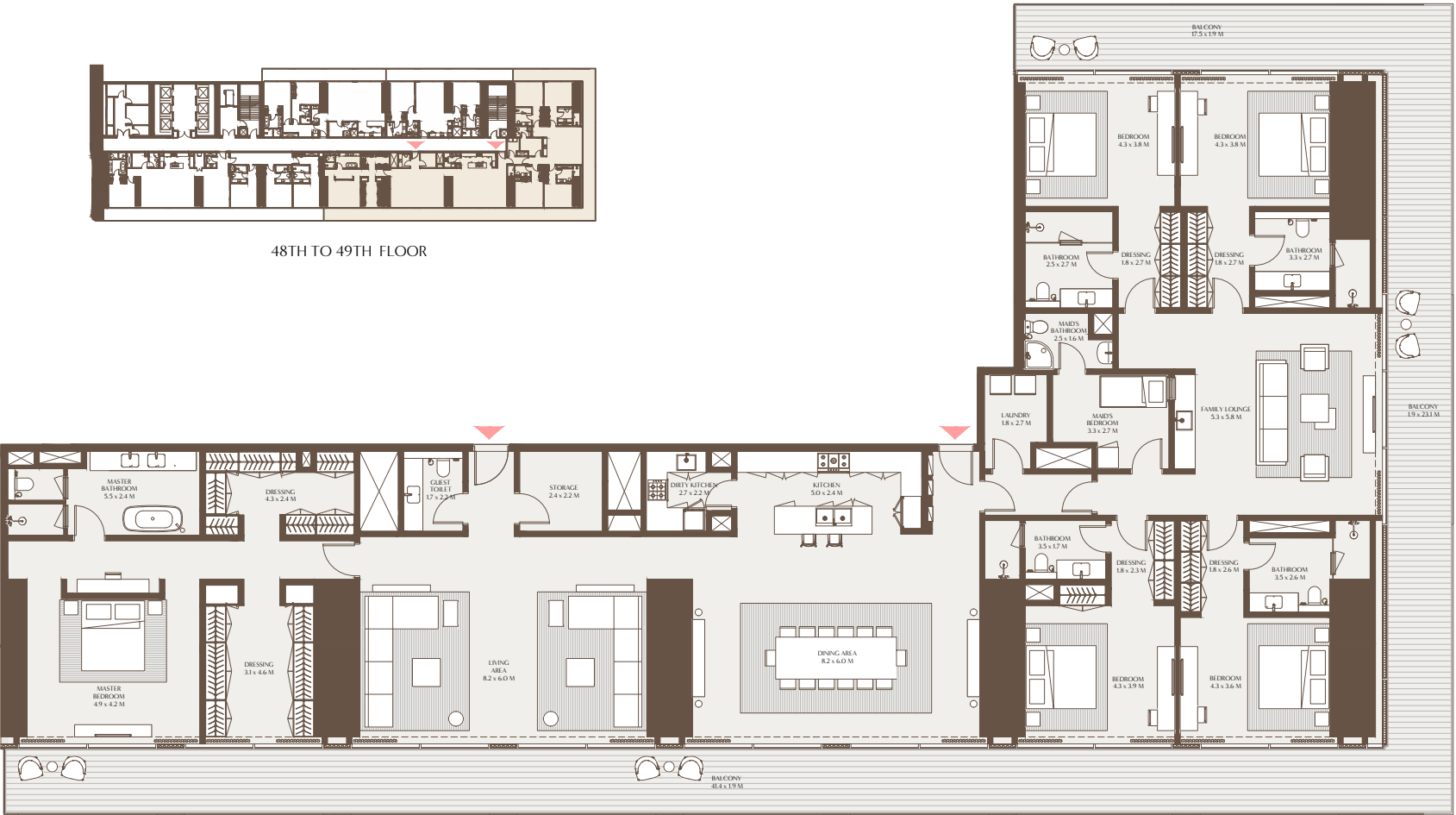


1-Measurements are indicative 'finish to finish' in Metric & Imperial excluding construction tolerance. 2-Plot/unit dimensions may vary from brochure, and unit types/plans may exist as mirrored versions; 3-All images used are for illustrative purposes only. 4-Unless stated otherwise, all fittings and interior decorative items shown are for illustrative purposes only. 5-The developer reserves the right to make alterations, at its absolute discretion, without any liability whatsoever up to the final 'as built' status.



# The Gravity House - 5 Bedroom Residence A

Unit Area: 443.33 Sqm (4,771.95 Sqft) | Balcony Area: 137.93 Sqm (1,484.64 Sqft) | Total Area: 581.26 Sqm (6,256.59 Sqft)

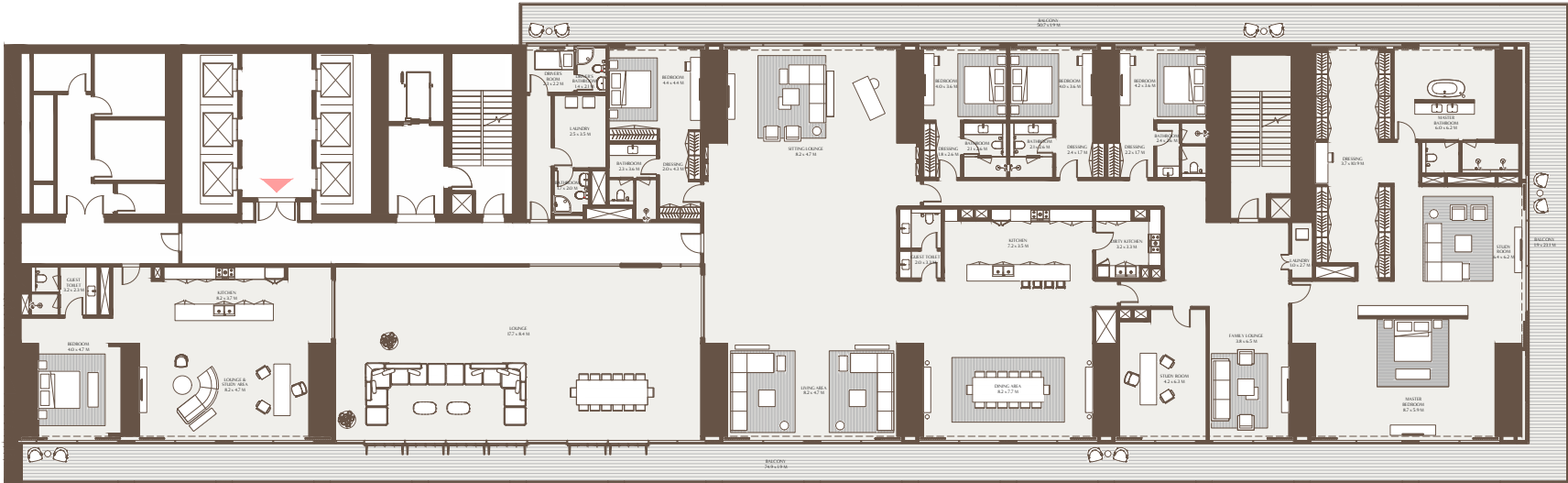


1-Measurements are indicative 'finish to finish' in Metric & Imperial excluding construction tolerance. 2-Plot/unit dimensions may vary from brochure, and unit types/plans may exist as mirrored versions; 3-All images used are for illustrative purposes only. 4-Unless stated otherwise, all fittings and interior decorative items shown are for illustrative purposes only. 5-The developer reserves the right to make alterations, at its absolute discretion, without any liability whatsoever up to the final 'as built' status.



# The Sky Terrace - 6 Bedroom Penthouse A

Unit Area: 1,084.97 Sqm (11,678.52 Sqft) | Balcony Area: 274.05 Sqm (2,949.88 Sqft) | Total Area: 1,359.02 Sqm (14,628.40 Sqft)



50TH FLOOR

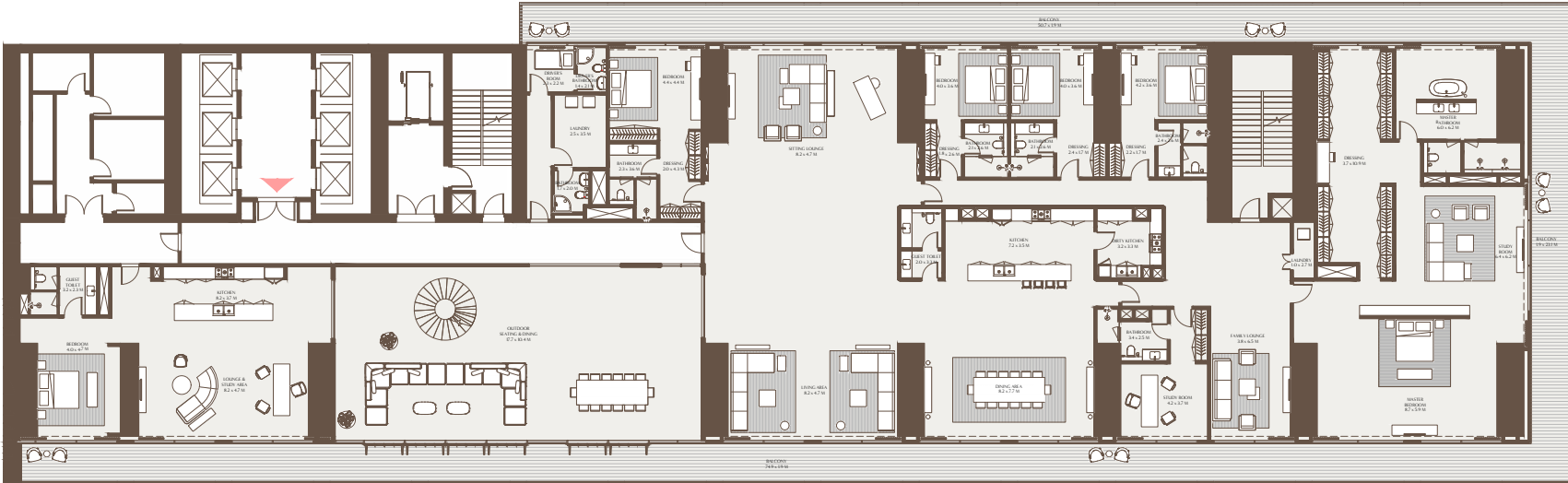


1-Measurements are indicative 'finish to finish' in Metric & Imperial excluding construction tolerance. 2-Plot/unit dimensions may vary from brochure, and unit types/plans may exist as mirrored versions; 3-All images used are for illustrative purposes only. 4-Unless stated otherwise, all fittings and interior decorative items shown are for illustrative purposes only. 5-The developer reserves the right to make alterations, at its absolute discretion, without any liability whatsoever up to the final 'as built' status.



The Observatory - 6 Bedroom Presidential Suite

Unit Area: 928.20 Sqm (9,991.10 Sqft) | Balcony + Roof Terrace: 1,271.06 Sqm (13,681.62 Sqft) | Total Area: 2,199.27 Sqm (23,672.72 Sqft)

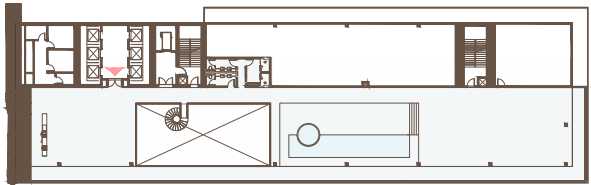
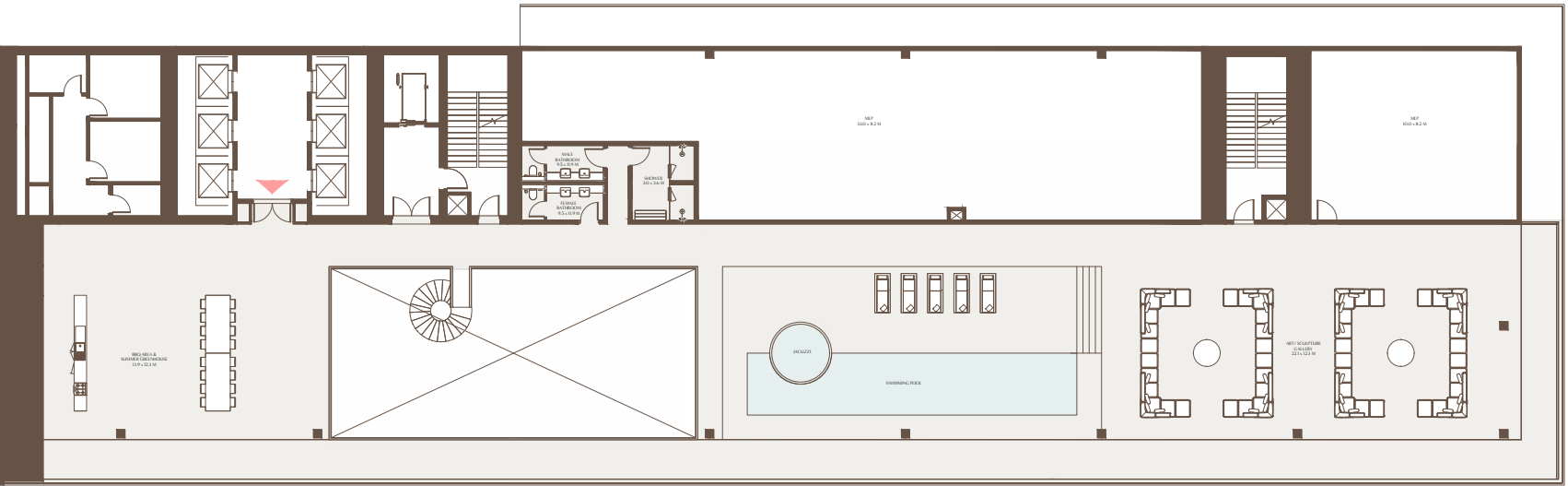


51ST FLOOR



1-Measurements are indicative 'finish to finish' in Metric & Imperial excluding construction tolerance. 2-Plot/unit dimensions may vary from brochure, and unit types/plans may exist as mirrored versions; 3-All images used are for illustrative purposes only. 4-Unless stated otherwise, all fittings and interior decorative items shown are for illustrative purposes only. 5-The developer reserves the right to make alterations, at its absolute discretion, without any liability whatsoever up to the final 'as built' status.

The Observatory - 6 Bedroom Presidential Suite Roof Terrace



ROOF FLOOR



1-Measurements are indicative 'finish to finish' in Metric & Imperial excluding construction tolerance. 2-Plot/unit dimensions may vary from brochure, and unit types/plans may exist as mirrored versions; 3-All images used are for illustrative purposes only. 4-Unless stated otherwise, all fittings and interior decorative items shown are for illustrative purposes only. 5-The developer reserves the right to make alterations, at its absolute discretion, without any liability whatsoever up to the final 'as built' status.