

**BINGHATTI**  
TWILIGHT



### Binghatti: A Legacy of Architectural Artistry

In the heart of Dubai's vibrant real estate landscape, **Binghatti** stands as a testament to architectural ingenuity and unwavering commitment to excellence.

As a distinguished Emirati property brand, **Binghatti** has carved a niche for itself by creating iconic landmarks that redefine the skyline.

The brand's diverse portfolio caters to a wide spectrum of discerning clientele, offering projects that range from accessible elegance to ultra-high-end luxury.

**Binghatti's** signature design DNA, meticulously woven into each development, sets it apart on the global stage.

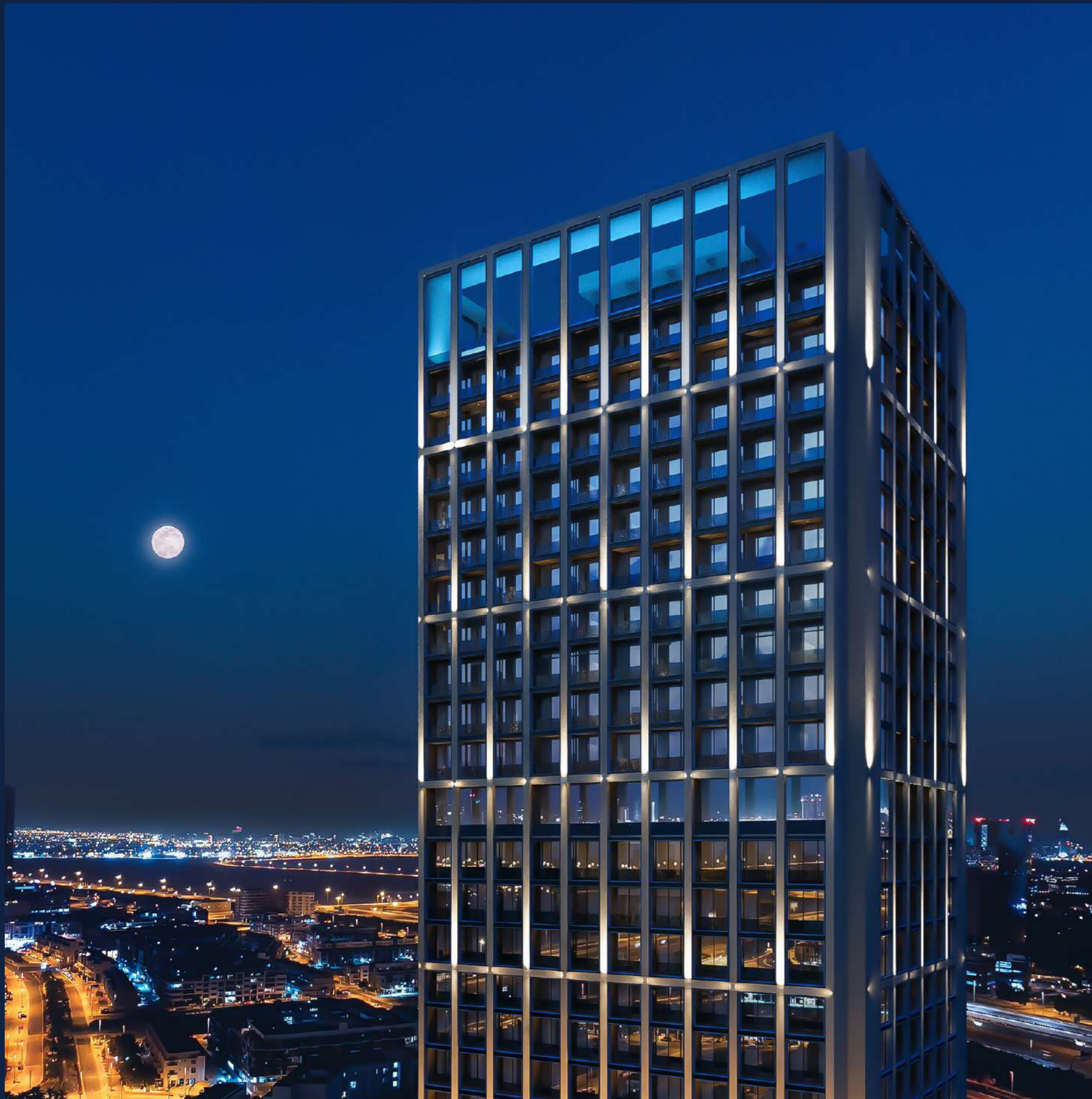
With over 79 projects valued at more than AED 50 billion, **Binghatti** is a leading privately held developer in the UAE. The company's impressive track record, including the successful delivery of 20,000 units prior to 2024, underscores its dedication to crafting exceptional living spaces.

Through groundbreaking collaborations with prestigious luxury brands such as **BUGATTI, Mercedes-Benz, and Jacob & Co., Binghatti** continues to push boundaries and set new benchmarks in the world of branded real estate.

✦ Consider the  
precise moment.  
Not stark day, nor  
complete night. A  
delicate, magical  
interlude ✦

## Where Form Holds Feeling

The beauty of existence's cycles. Twilight. A structure designed not merely to exist, but to feel. Form holding emotion. The intangible, iconic. A beacon of profound reflection, standing tall in Al Jaddaf, where the hum of the city softens into a quiet, contemplative cadence.



# A Signature in Light

Twilight's architectural presence is a testament to the enduring power of form. Its singular silhouette, rising with sculpted precision, is a modern aesthetic composed of a meticulously articulated grid.

This is more than structure; it is a canvas for light, designed to capture, refract and evolve with every passing hour.

01

## About Twilight

Step inside and feel the refined energy. Twilight is an exclusive collection of 228 residential units, comprising 104 one-bedroom, 118 two-bedroom, and 6 three-bedroom residences. Alongside, 47 meticulously designed office spaces and two ground-floor retail shops complete this distinctive offering. This is a structure where every element is carefully considered to create a realm of quiet elegance and inspiration, reflecting Binghatti's dedication to crafting spaces that transcend the ordinary.

02

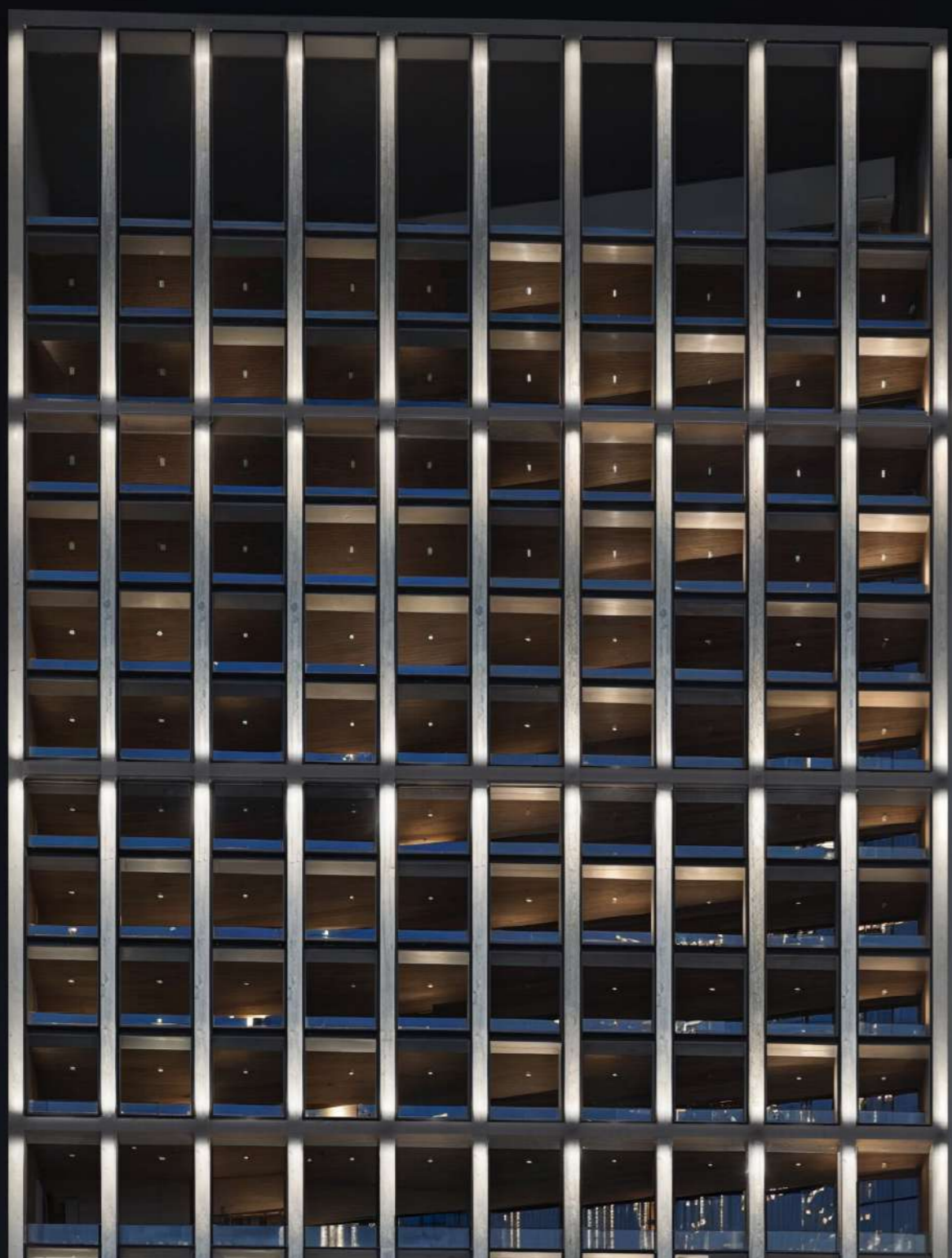
## Design Details

Rising with sophisticated precision, Twilight's modern design is articulated through crystalline glass façades. These are not mere surfaces, but dynamic canvases for light, constantly capturing, refracting and evolving with the sun's journey. Each element, from the deliberate choice of sustainable, high-end materials to the seamless blend of indoor and outdoor living, whispers of mastery and an unwavering pursuit of perfection.

03

## Floor Plans

Discover residences where life unfolds with exquisite clarity. Expansive layouts and floor-to-ceiling windows invite breathtaking panoramic views of the Dubai skyline, including Burj Khalifa, Dubai Creek Harbour, and Business Bay crossing, into consummate interiors. Here, amidst unmatched materiality and meticulous detail, you'll find a home where light and shadow play, creating a sense of boundless space that truly elevates everyday.



Where light and materiality speak. Each surface, each finish, a deliberate choice. A discerning eye for design.





# A Testament to Quiet Wonder

Twilight stands as a beacon of profound reflection, high above the city's pace. Step into a world where every detail is crafted to ease the mind and soul. Feel the weight of the world dissolve as you lose yourself in every perfectly held detail, a sanctuary designed to nurture quiet wonder.

# Rooted in place, Boundless in Potential

Twilight is set in the spirited heart of Al Jaddaf, a unique junction of heritage and innovation. This strategic location offers unparalleled connectivity, poised between the historic pulse of Dubai Creek and the visionary gleam of the modern skyline. Enjoy effortless access, placing the entire city within seamless reach. From cultural attractions, to the vibrant districts and sanctuaries, Al Jaddaf provides a lifestyle second to none.





# For Those Who Discern the Exceptional

Twilight is an invitation to a life less ordinary. It's a place where discerning individuals can find a home that reflects their aspirations, a space that inspires and elevates. Crafted for those who seek to embrace the magic of the hour, allowing it to guide introspection and inspire renewal.



# 01

## About Twilight

Delve deeper into the design philosophy behind Twilight, where every element is carefully considered to create a poised way of life. Discover residences crafted with exquisite materials, each a testament to Binghatti's pursuit of perfection. This building, standing singular, captures the very essence of its namesake, a moment of transition where light and shadow blend.

# Connected to the City, Grounded in Composure

Twilight enjoys a unique sense of connectivity within Al Jaddaf, placing the city's unyielding promise within effortless reach. Strategically located, it offers 5-10 minute access to schools, hospitals, and malls, just 8 minutes to Business Bay and DXB Airport, and 10 minutes to iconic landmarks like Burj Khalifa, Dubai Mall and the Museum of the Future.

Future developments, including a potential Etihad Rail stop in Al Jaddaf and a future Metro connection nearby to Dubai Creek Harbour, promise even greater accessibility, solidifying Twilight's position as a hub of convenience.





PROJECT FACTS

# A Curated Collection of Residences

Property type

Residential + Retail + Commercial

Plot area

2239.35 Sq.M / 24104.00 Sqft

Building description

4B + G + 3P + 3 offices + 1 office & res. + 18 Residential floors + Mech. +  
Roof ( 4B + G + 3P + 22 floors + Mech.+ Roof)

Number of units

1 Bed:	104
2 Bedroom:	118
3 Bedroom:	6
Total residential units:	228
Total offices:	47
Retail shops (ground floor):	02

Amenities :

- common GYM male and female
- Swimming pool (infinity pool)
- Seating area







# A World of Renewal at Your Doorstep

Twilight holds within it a curated selection of amenities designed to enhance everyday life and promote a sense of renewal. On the first floor, dedicated office spaces provide seating areas amidst softscapes. The rooftop level offers a active, dedicated gym, an inviting infinity sparkling pool with stunning views and ample seating areas.

This is your world to escape to, a place to unravel, revive and rediscover solace, all within a pet-friendly environment with access to parks and recreational areas.



Common Gym



Swimming Pool



Seating Area



Retail Shops



Offices



Parking Space



Pet Friendly



Smart Home



# Twilight location in al Jaddaf

Twilight is located in Al Jaddaf Waterfront, offering a breathtaking view of the Creek Harbour skyline from the balcony. It is conveniently situated near Dubai's top tourist destinations, including Dubai Mall and Burj Khalifa, and is just minutes away from Dubai International Airport.



Burj Khalifa & Downtown Dubai  
3-5 MINUTES



Dubai Opera  
3-5 MINUTES



THE DUBAI MALL  
3-5 MINUTES



Dubai Design District  
5-8 MINUTES



Meydan Racecourse  
5-10 MINUTES



Ras Al Khor Wildlife Sanctuary  
5-10 MINUTES



Museum of the Future  
4-6 MINUTES



Dubai Frame  
4-6 MINUTES

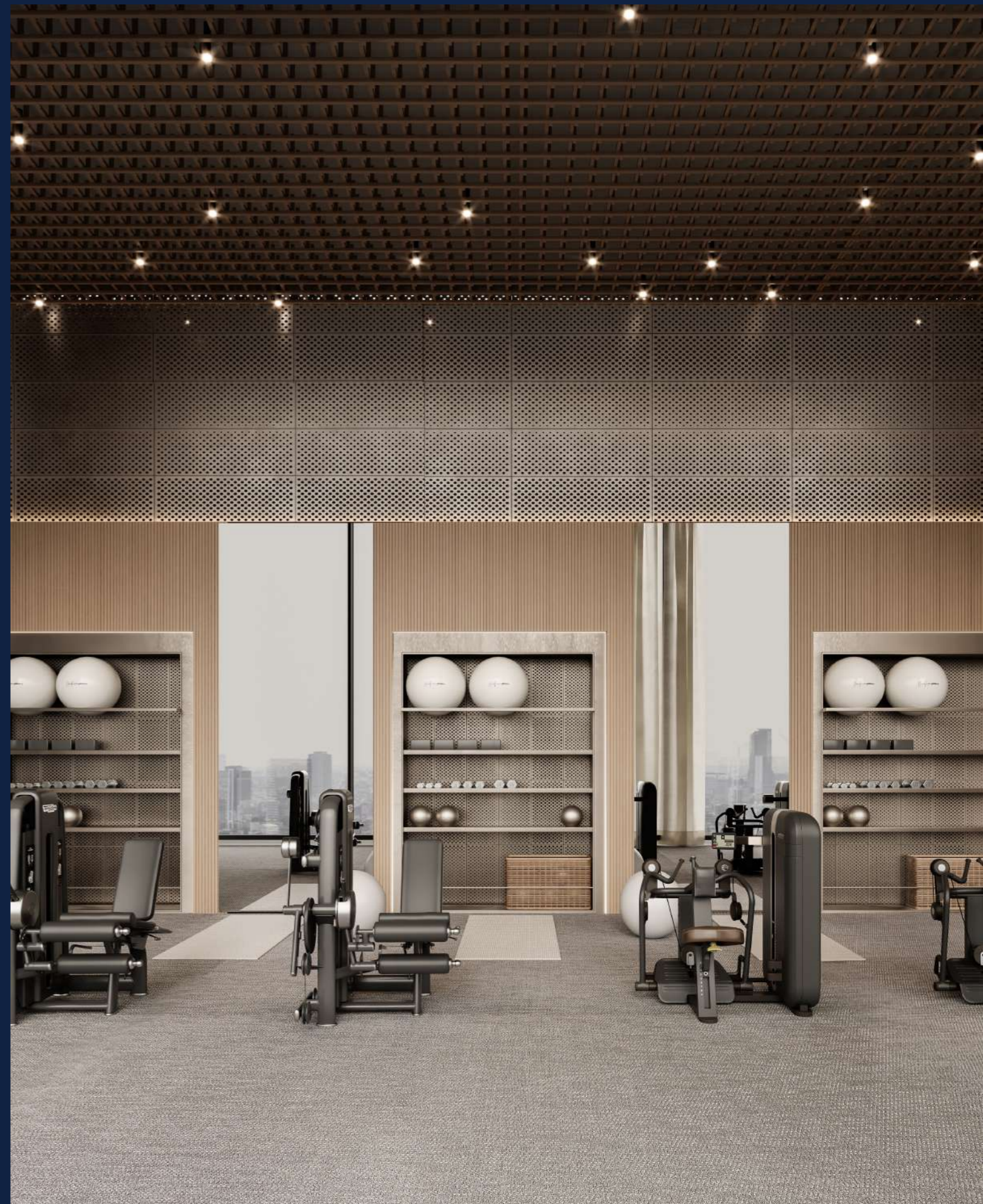


Al Jaddaf Walk  
2-3 MINUTES



Scan Here To  
Check The Location







# Unmatched Materiality, Unparalleled Comfort

Step into residences that redefine higher living. Expansive windows frame astonishing views of the Dubai skyline, while masterfully curated interiors, featuring the finest materials and finishes, culminate in a realm for the senses.

Every detail is designed to elevate and awaken wonder, ensuring a quiet elegance permeates each space. Smart home features and AI-driven technologies provide seamless comfort, while 24/7 security and state-of-the-art surveillance systems ensure peace of mind in one of the safest cities in the world.

# Crafted with Precision, Designed to Inspire

Twilight is a testament to Binghatti's unwavering commitment to quality and craftsmanship. Each residence is meticulously crafted, a promise made real to lightness and elegance. Energy-efficient building practices and sustainable, high-end materials are embraced throughout, reflecting a commitment to natural harmony and enduring value.





# 02

## Design Details

Explore the design nuances that set Twilight apart. From the sleek lines of its crystalline façade, shimmering against the Dubai skyline, to the carefully curated interiors. The strategic placement of brass accents throughout adds a touch of warmth and a sense of discovery, inviting exploration within the sanctity of home.

# A Palette of Poise

Twilight's interiors are a reflection of untamed spirit, yet they whisper rather than shout. Subtle hues and rich textures orchestrate an extraordinary living space, while the interplay of light and shadow adds a touch of drama, mirroring the beauty of the twilight hour.

This is a space where personal taste finds its towering expression, designed for clarity and purity.





# Elevated Living, Elevated Existence

Twilight is an ode to a unique mode of living. Embrace a life of unparalleled comfort and convenience, where every need is anticipated and every desire is within reach through exclusive concierge services. Find calm in the quiet moments, the contemplative spaces designed to make you stop – and restore. Binghatti bespoke services further elevate the living experience, ensuring every detail is perfectly tailored.





# Tangible Beauty

Linger. Trace the sweeping curves, the shimmer and reflection, the precisely placed details that whisper of mastery. In this quiet in-between, beauty is tangible.

Twilight. Endless vistas melt into consummate interiors. Unmatched materiality invites touch. A vertical field of dreams, perfectly held in detail.









# An Investment in Brilliance

Twilight represents a compelling investment opportunity, rooted in freehold ownership with strong historical appreciation in property values within Al Jaddaf. Its strategic location, world-class amenities and position as a cultural and technological hub contribute to its long-term value growth. With high rental yield potential and attractive resale value, Twilight is also a prime holiday home haven, offering 10-year Golden Visa eligibility and the distinct advantage of no property tax.



UAE Golden Visa  
Up to 10 years Citizenship

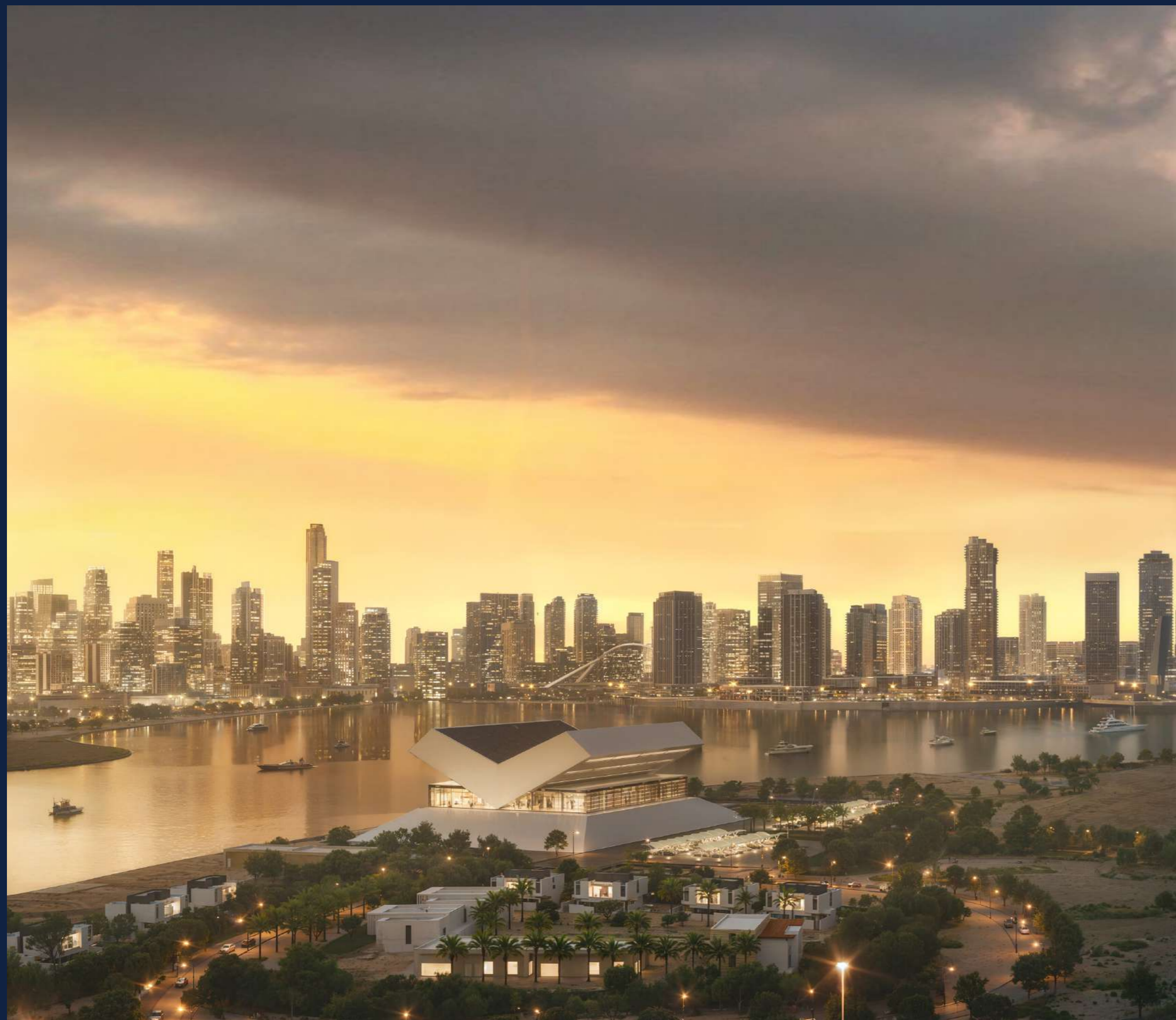


Prime Location



Appreciation in  
property values

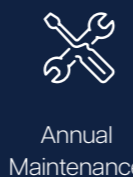




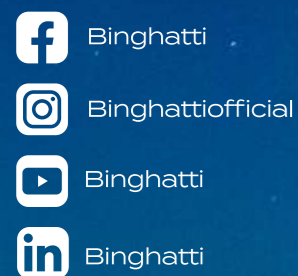


# Bespoke Living Binghatti Style

EXPERT PROPERTY SERVICES  
ALL UNDER ONE ROOF



ONE SCAN  
ALL SOLUTION



بن غاڻي ٽوايلايت  
**BINGHATTI** TWILIGHT