



TOMORROW 166

Dubai Islands



**TOMORROW
WORLD**
REAL ESTATE DEVELOPMENT LLC

INVESTING IN DUBAI

Dubai stands as a beacon of opportunity in global real estate, combining strategic geographic positioning, progressive governance, and a thriving economy to create an investor-friendly ecosystem. Renowned for its political stability, tax-free environment, and business-forward policies, the emirate attracts capital from around the world, underpinned by its status as a gateway bridging Europe, Asia, and Africa.





INVESTING IN DUBAI ISLANDS

Nestled at the mouth of Dubai Creek, Dubai Islands is a groundbreaking development by Nakheel - the masterminds behind Palm Jumeirah. Spanning 17 sq.km across five interconnected islands, it stands as Dubai's largest waterfront project, blending natural beauty with urban innovation. Offering 21 km of beaches, 9 marinas, and direct Persian Gulf access, it redefines coastal living while aligning with Dubai's 2040 Urban Master Plan vision to become a global leisure, tourism and lifestyle hub.

FAMILY GATHERING & MOMENTS

A welcoming sanctuary where families bond over shared experiences: interactive playgrounds, seaside storytelling, and open-air picnic pavilions. Curated for laughter, storytelling, and relaxation.





WORLD-CLASS SHOPPING & DINING

Indulge in luxury boutiques, gourmet eateries, and vibrant markets. From haute couture to local crafts, savor global cuisines or intimate café moments - curated to delight discerning tastes.

PRISTINE BEACHES & SEASIDE BLISS

Sunlit shores meet crystal-clear waters, framed by golden sands and gentle waves. Ideal for swimming, sunbathing, or tranquil strolls—nature's untouched beauty invites rejuvenation.





LEISURE & TOURISM EXCELLENCE

Unwind in luxury hotels, tee off at championship golf courses, or explore vibrant nightlife. Adventure meets relaxation with spas, water sports, and cultural escapades.

LOCATION MAP



4minutes to
Gold Souk



4minutes to
Waterfront Market



12minutes to Dubai
International Airport



15minutes to
Burj Khalifa

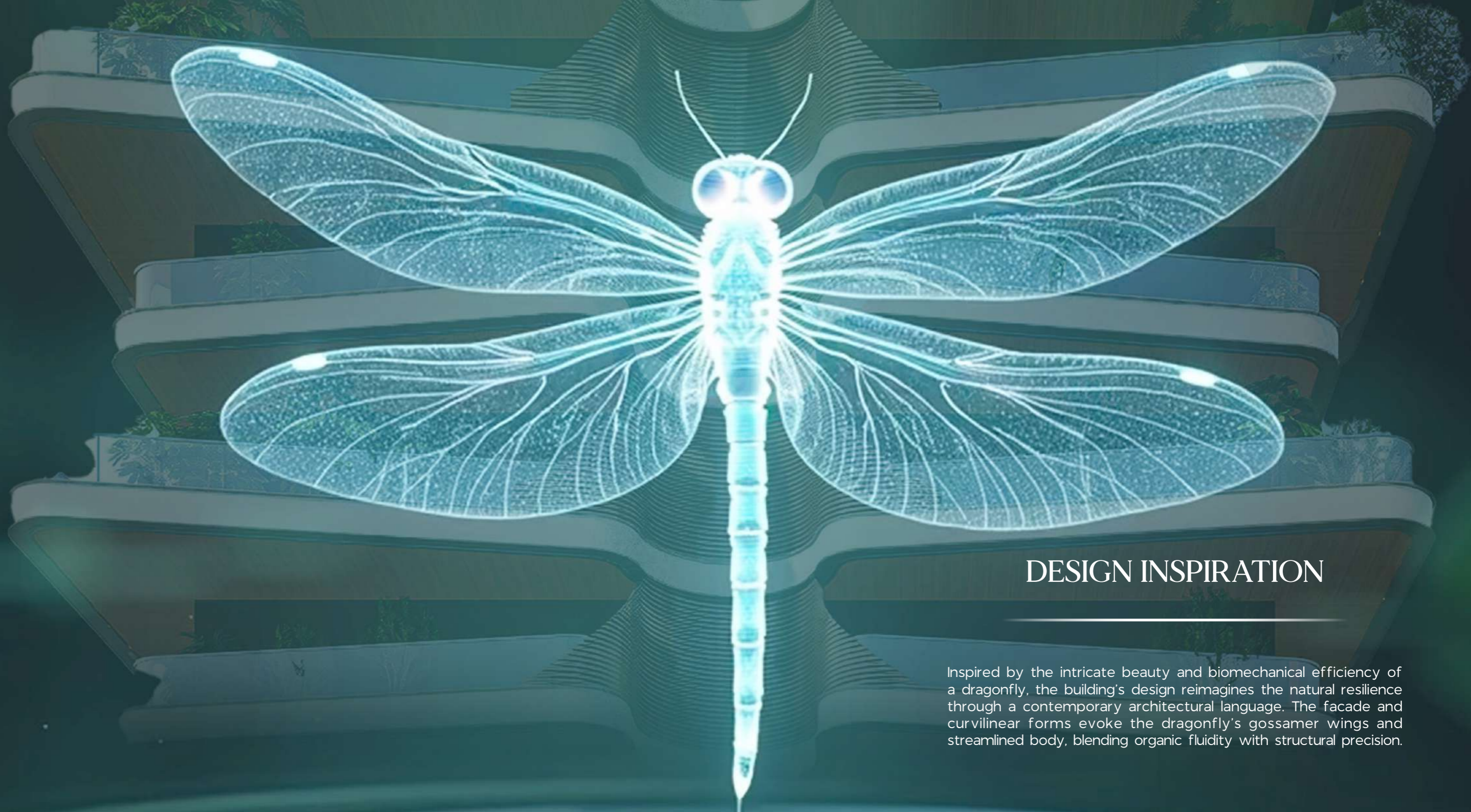


16minutes to
Dubai Creek Harbour



25minutes to
Burj Al Arab





DESIGN INSPIRATION

Inspired by the intricate beauty and biomechanical efficiency of a dragonfly, the building's design reimagines the natural resilience through a contemporary architectural language. The facade and curvilinear forms evoke the dragonfly's gossamer wings and streamlined body, blending organic fluidity with structural precision.



ARCHITECTURAL HARMONY WITH NATURE

Nestled within the serene expanse of Dubai Islands (Island A), this low-rise, low-density G+P+7 mixed use building of 50 residential apartments and 4 retails redefines modern living by blending seamlessly with its natural surroundings. Designed to prioritize space and tranquility, the structure's modest height and limited unit count ensure unobstructed views of lush parks and the vibrant community.

ECO-FRIENDLY LIVING & ELEVATED BALCONIES

At the heart of this development lies a commitment to sustainability and outdoor living. Superior balconies, extending from every unit, are designed as private sanctuaries that encourage residents to embrace the outdoors. Expansive windows and open layouts invite abundant natural light, while the earth-toned facade complements the island's coastal palette.





THRESHOLD OF CALM - LOBBY

The lobby embodies a contemporary sanctuary, blending minimalist aesthetics with soothing elements to create a seamless transition from the bustling urban environment into a tranquil retreat.

FAMILY HARMONY- POOLS & TERRACE ESCAPE

A sunlit main pool, playful kids' zone, and shaded terrace merge seamlessly with lush park vistas. Natural materials, island breezes, and dappled sunlight create a serene, family-focused retreat. Designed for laughter and relaxation, it balances vibrant energy with tranquil nooks - a daily escape where nature and community thrive.





MULTI-FUNCTIONAL LOUNGE WITH NATURE VIEWS

A serene, light-filled space for reading, socializing, or quiet reflection. Floor-to-ceiling windows frame terrace and park greenery, while versatile seating, a curated library nook, and a beverage bar foster connection.

PLAYFUL WONDERLAND – INDOOR KIDS' ZONE

A vibrant, safe space where imagination thrives. Curved climbing structures, interactive sensory panels, and soft-padded zones spark joy. Whimsical colors, nature-inspired textures, and a mini slide blend fun with developmental play. Parents relax nearby as sunlight floods through windows, creating a cheerful haven for laughter, exploration, and endless adventures.





PARKVIEW GYM – WHERE FITNESS MEETS SERENITY

Floor-to-ceiling windows immerse the gym in serene park and terrace vistas, blending natural tranquility with state-of-the-art equipment. Advanced cardio machines, resistance zones, and functional training areas cater to every fitness level, creating a space where invigorating workouts harmonize with inspiring outdoor views.

LIVING/DINING



KITCHEN



MASTER BEDROOM



BATHROOM





MASTER BEDROOM



SECOND BEDROOM



KITCHEN



BATHROOM





YACHT & MARINA EXPERIENCES

A luxury marina offering private yacht slips, bespoke charters, and sunset voyages. Discover exclusive Tomorrow World Club experiences - elevated yachting, sportfishing, or family sailing - where azure seas meet elite amenities, blending maritime thrills with serene coastal retreats. Indulge in refined nautical experiences amid pristine waters and five-star service, seamlessly crafted for both adventure and relaxation.

TOMORROW 166



ADVANTAGES OF SELLING POINTS



HIGH ROI ADAPTABLE LAYOUT



24/7 ON-SITE BUTLER SERVICE



EXCLUSIVE YACHTING ACCESS



ELITE OWNER PRIVILEGES





TOMORROW
WORLD



TOMORROW 166



TOMORROW
WORLD
REAL ESTATE DEVELOPMENT LLC