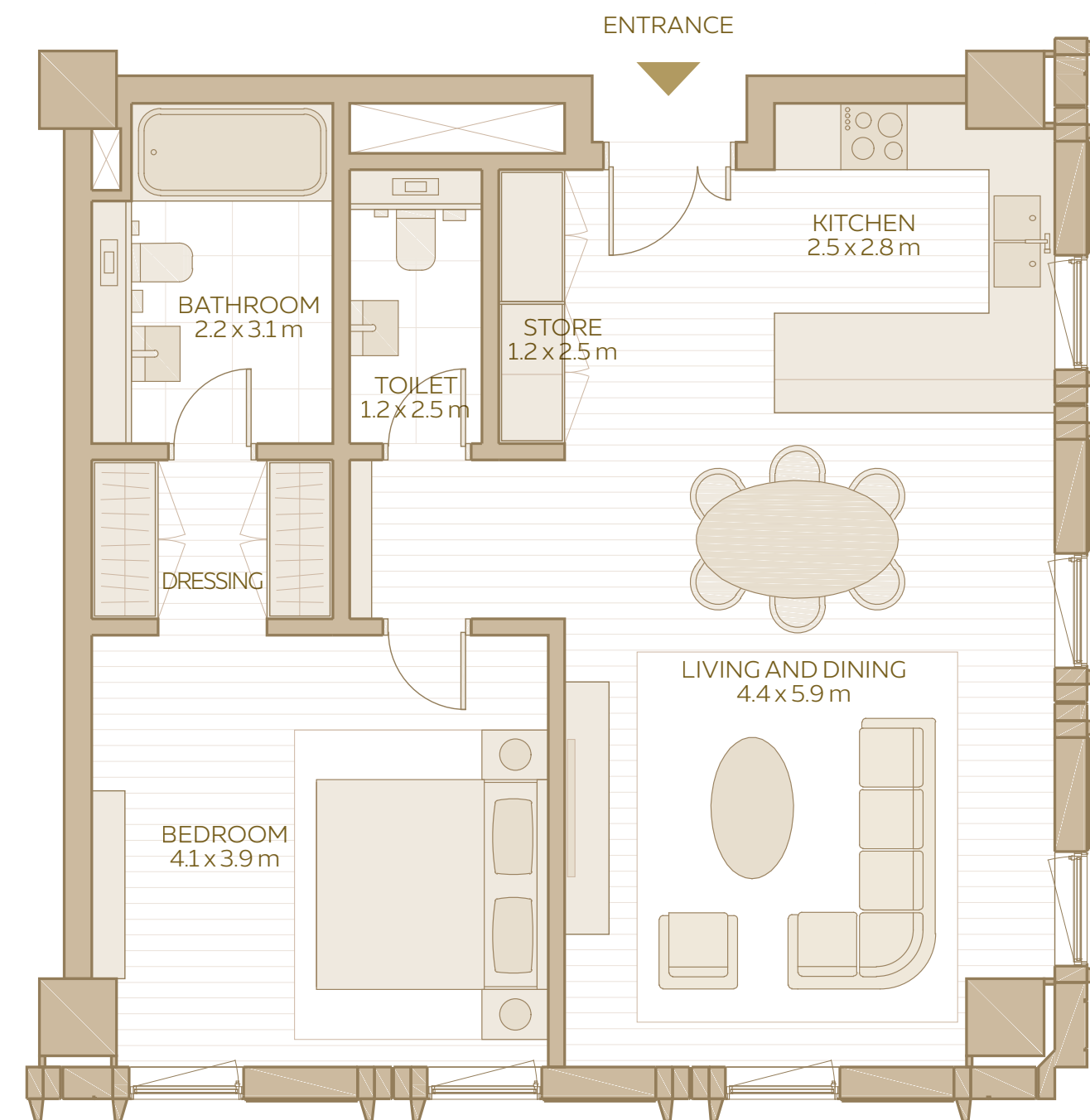


1-BEDROOM APARTMENT (TYPE 1)

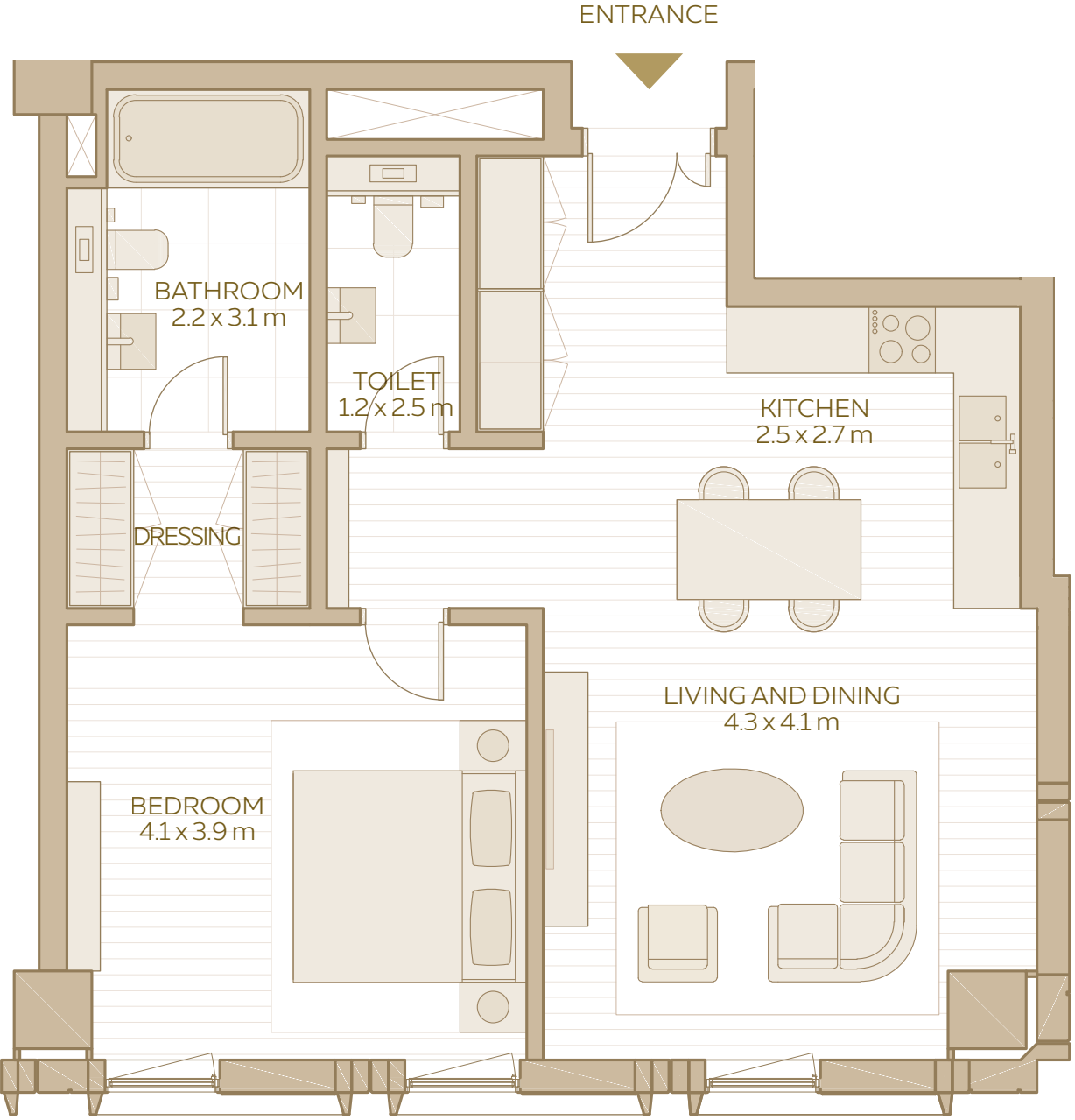


1-BEDROOM APARTMENT TYPE 1

TOTAL AREA:
80.40 SQM / 865.42 SQFT

AREA RANGE:
72.40 SQM - 80.40 SQM
779.31 SQFT - 865.42 SQFT

1-BEDROOM APARTMENT
(TYPE 3)

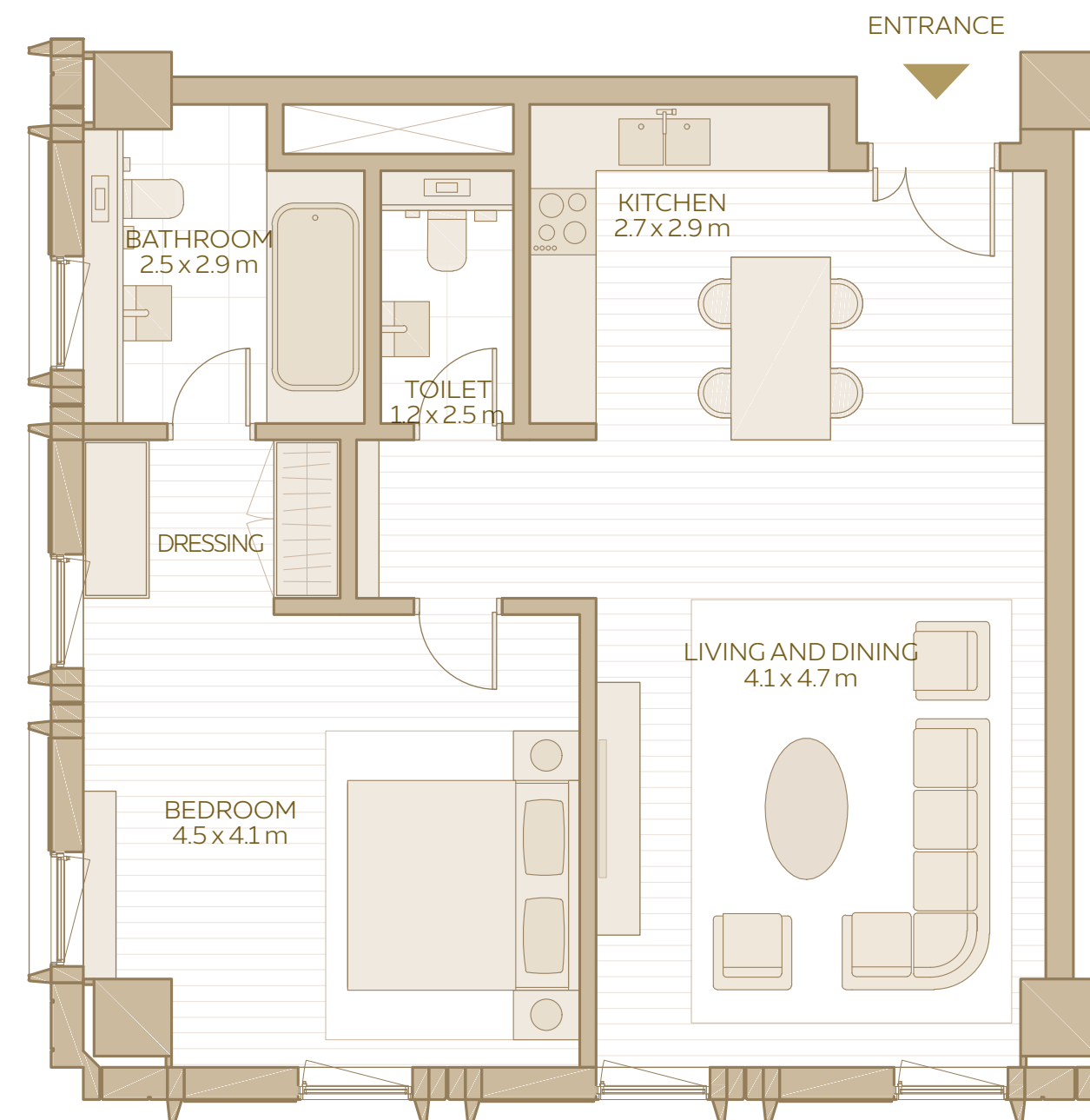


1-BEDROOM
APARTMENT
TYPE 3

TOTAL AREA:
68.71 SQM / 739.59 SQFT

AREA RANGE:
68.71 SQM - 72.41 SQM
739.59 SQFT - 779.41 SQFT

1-BEDROOM APARTMENT (TYPE 4)



1-BEDROOM APARTMENT TYPE 4

TOTAL AREA:
78.60 SQM / 846.04 SQFT

AREA RANGE:
78.60 SQM - 87.53 SQM
846.04 SQFT - 942.17 SQFT

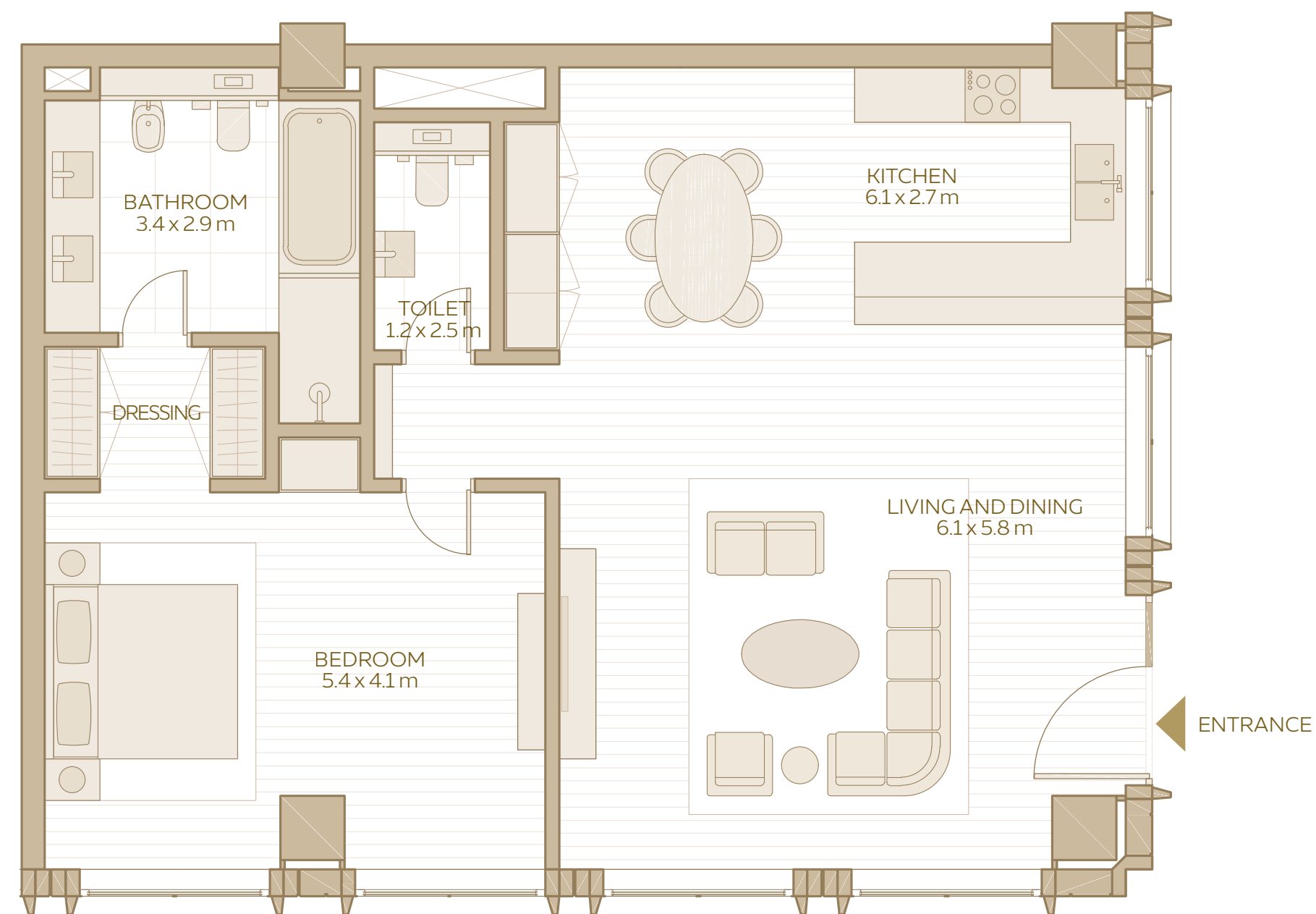


DISCLAIMER: 1. All room dimensions are in metres to the nearest decimal place, measured to structural elements, and exclude wall finishes and construction tolerances. 2. All dimensions have been provided by our consultant architects. 3. Areas are exclusive of partition walls, risers and terraces. 4. All materials, dimensions, drawings, features and amenities are approximate at the time of printing. 5. Actual area may vary from stated area. 6. Drawings not to scale E&OE. 7. Unit plans may exist in mirrored versions. 8. The developer reserves the right to make revisions to the floor plans and any features, materials, dimensions, drawings and amenities mentioned on this plan and in the brochure without notice.

AL WAHA

11 - UNIT PLANS

1-BEDROOM APARTMENT (TYPE 5)

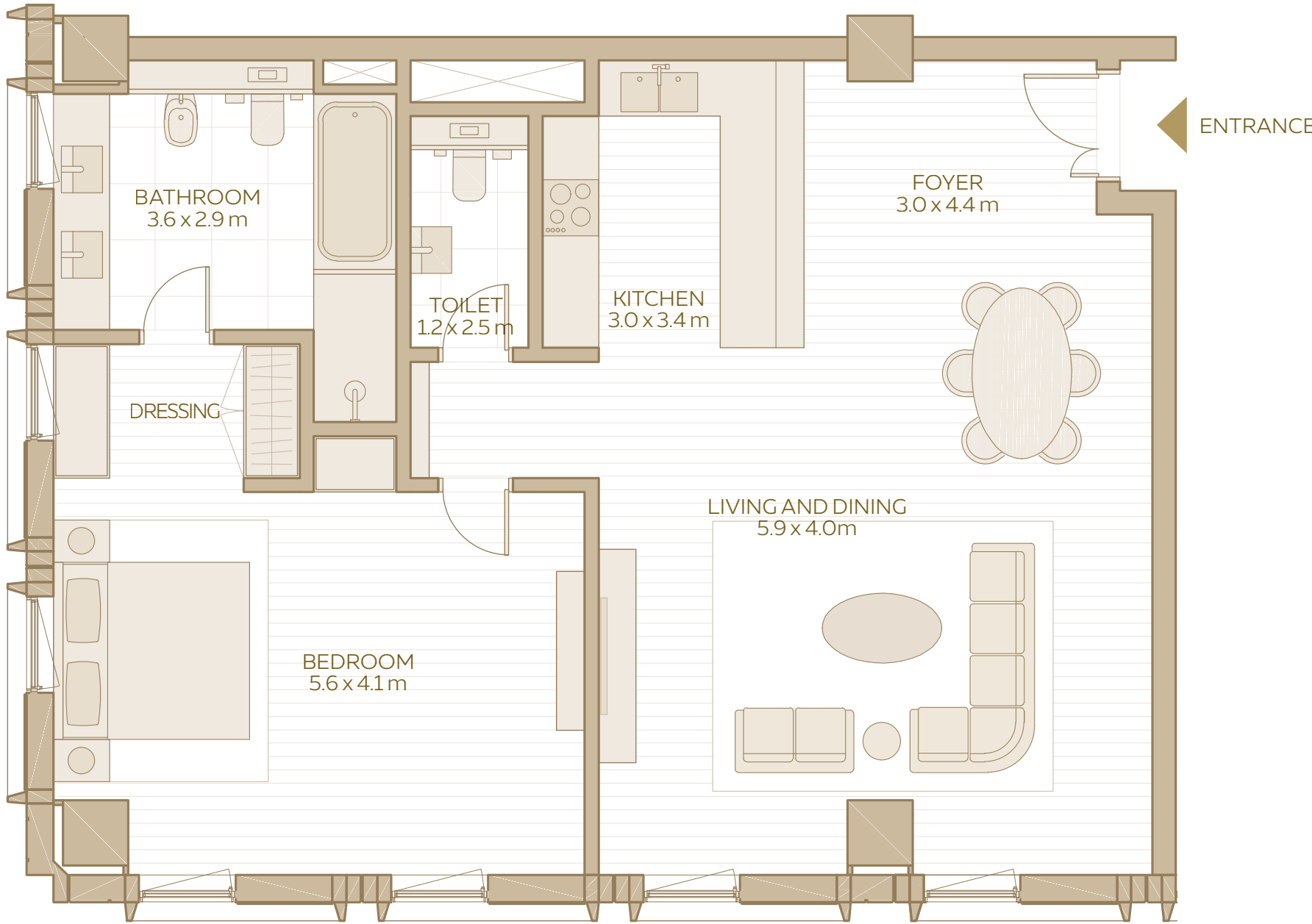


1-BEDROOM APARTMENT TYPE 5

TOTAL AREA:
107.85 SQM / 1,160.89 SQFT

AREA RANGE:
103.22 SQM - 107.85 SQM
1,111.05 SQFT - 1,160.89 SQFT

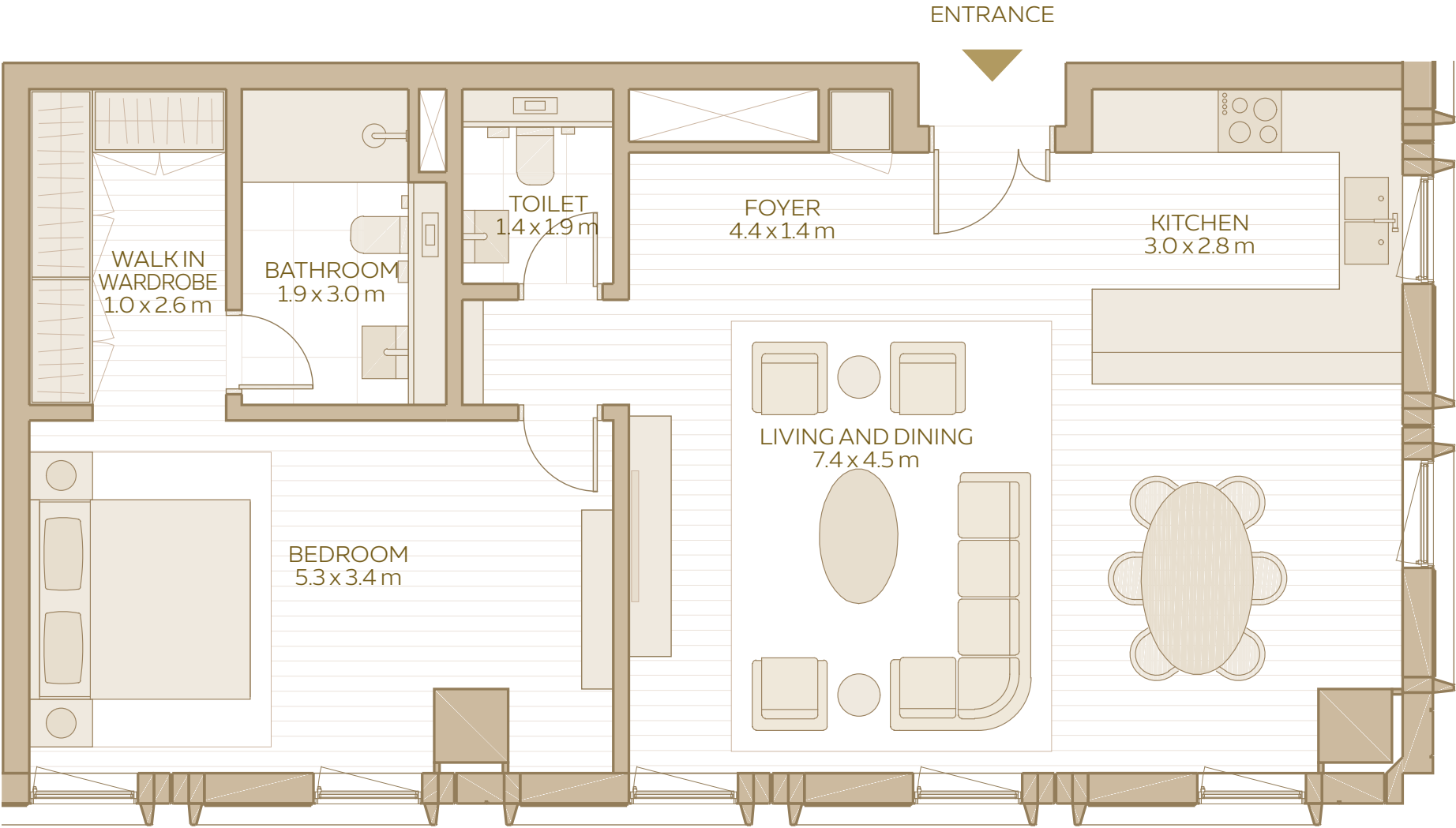
1-BEDROOM APARTMENT
(TYPE 6)



1-BEDROOM
APARTMENT
TYPE 6

AREA RANGE:
103.19 SQM / 1,110.73 SQFT

1-BEDROOM APARTMENT
(TYPE 7)

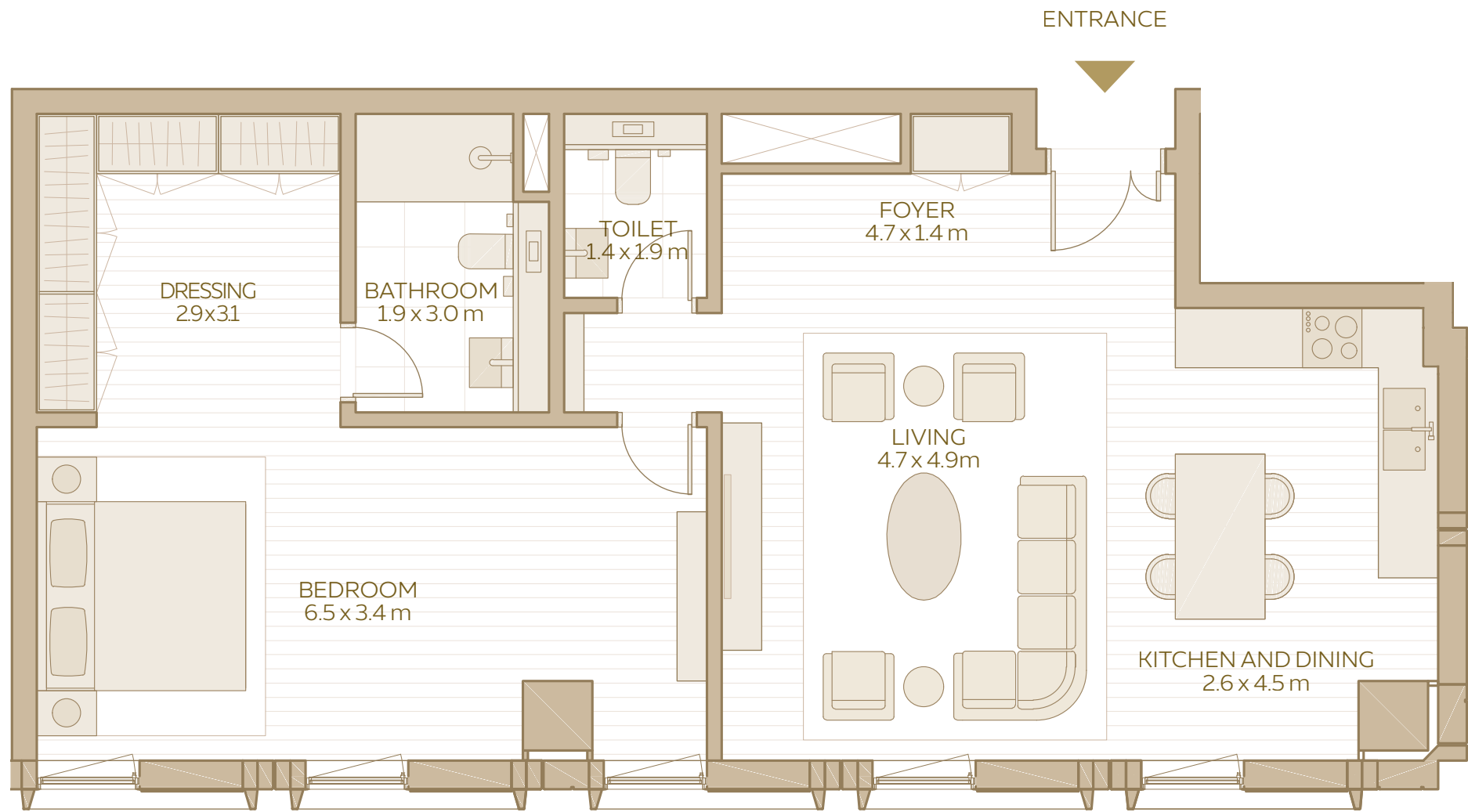


1-BEDROOM
APARTMENT
TYPE 7

TOTAL AREA:
86.57 SQM / 931.83 SQFT

AREA RANGE:
86.21 SQM - 86.59 SQM
927.96 SQFT - 932.05 SQFT

1-BEDROOM APARTMENT
(TYPE 8)

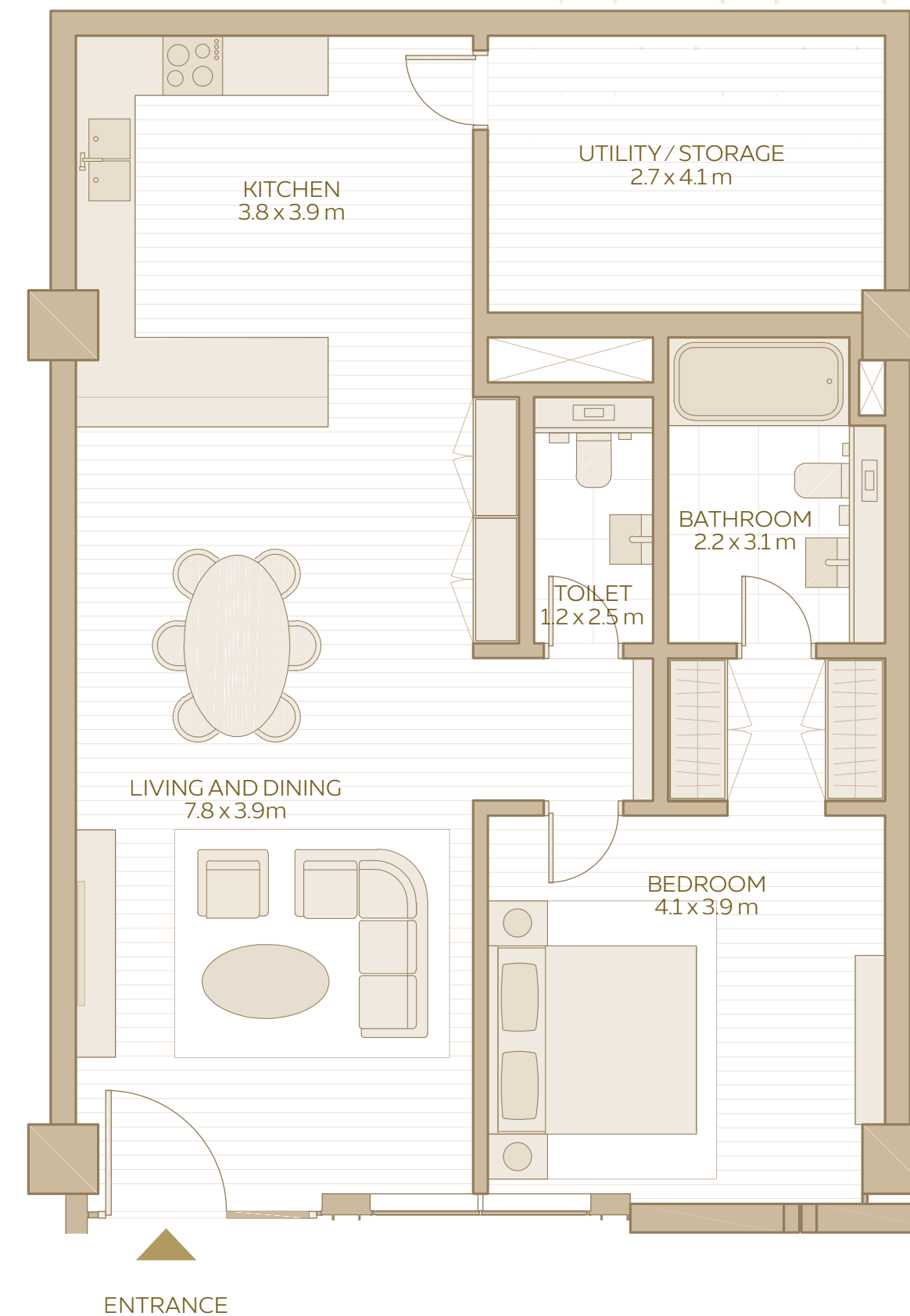


1-BEDROOM
APARTMENT
TYPE 8

TOTAL AREA:
88.24 SQM / 949.81 SQFT

AREA RANGE:
88.24 SQM - 91.65 SQM
949.81 SQFT - 986.51 SQFT

1-BEDROOM APARTMENT (TYPE 10)

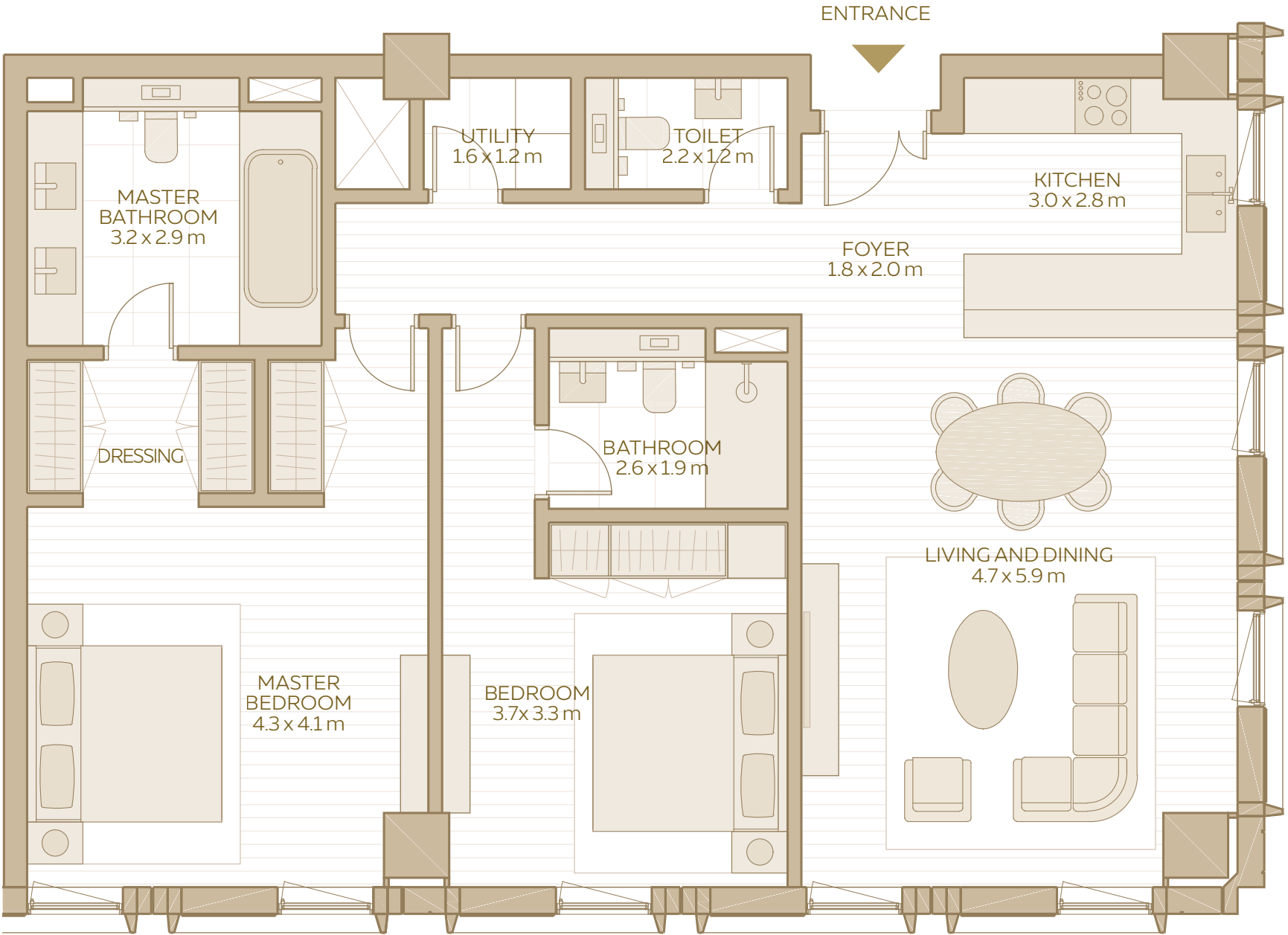


1-BEDROOM APARTMENT TYPE 10

TOTAL AREA:
99.06 SQM / 1,066.27 SQFT

AREA RANGE:
99.06 SQM - 103.38 SQM
1,066.27 SQFT - 1,112.77 SQFT

2-BEDROOM APARTMENT
(TYPE 1)

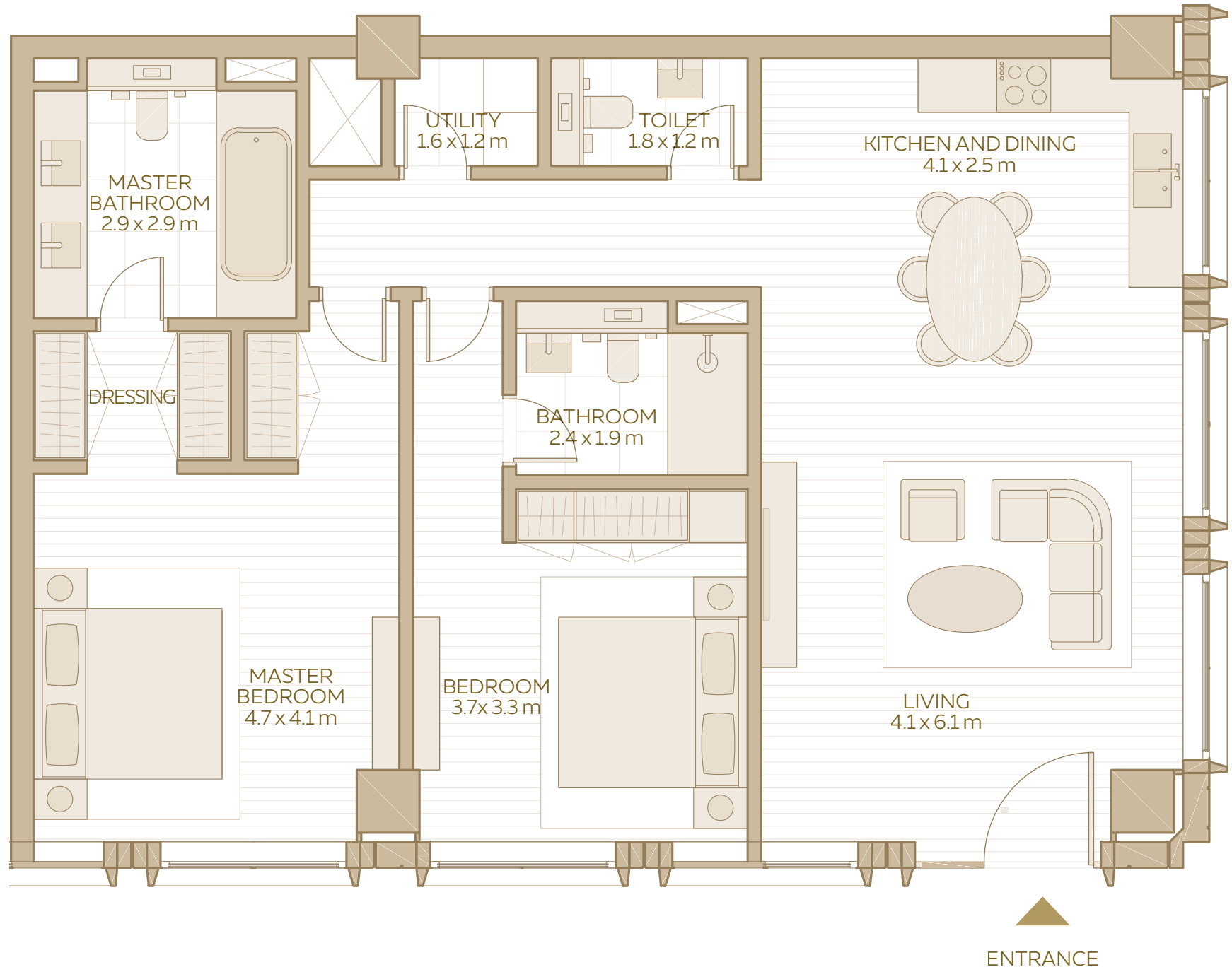


2-BEDROOM
APARTMENT
TYPE 1

TOTAL AREA:
116.99 SQM / 1,259.27 SQFT

AREA RANGE:
109.09 SQM - 116.99 SQM
1,174.23 SQFT - 1,259.27 SQFT

2-BEDROOM APARTMENT
(TYPE 2)

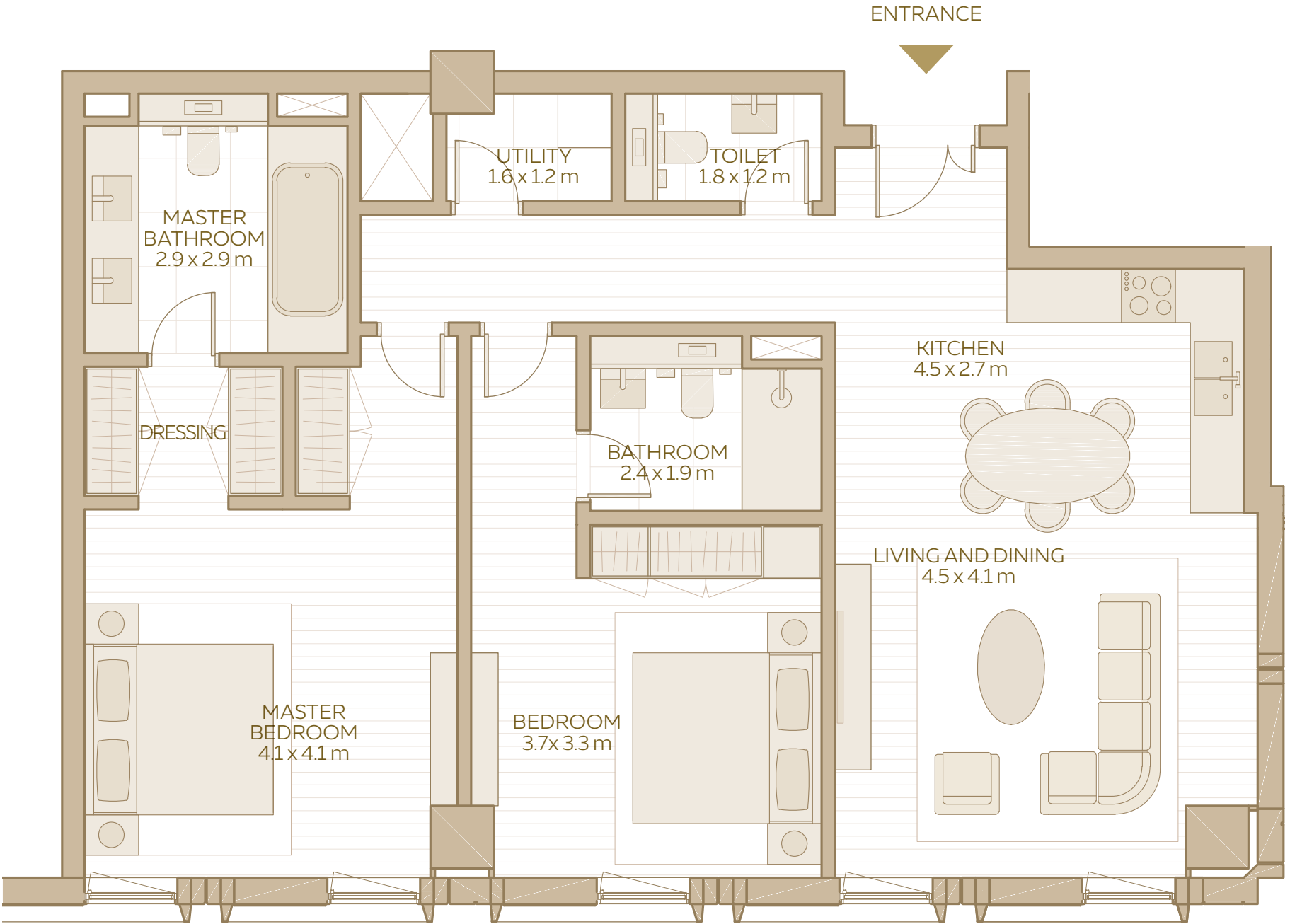


2-BEDROOM
APARTMENT
TYPE 2

TOTAL AREA:
118.03 SQM / 1,270.46 SQFT

AREA RANGE:
111.27 SQM - 118.03 SQM
1,197.70 SQFT - 1,270.46 SQFT

2-BEDROOM APARTMENT
(TYPE 3)



2-BEDROOM
APARTMENT
TYPE 3

TOTAL AREA:
108.33 SQM / 1,166.05 SQFT

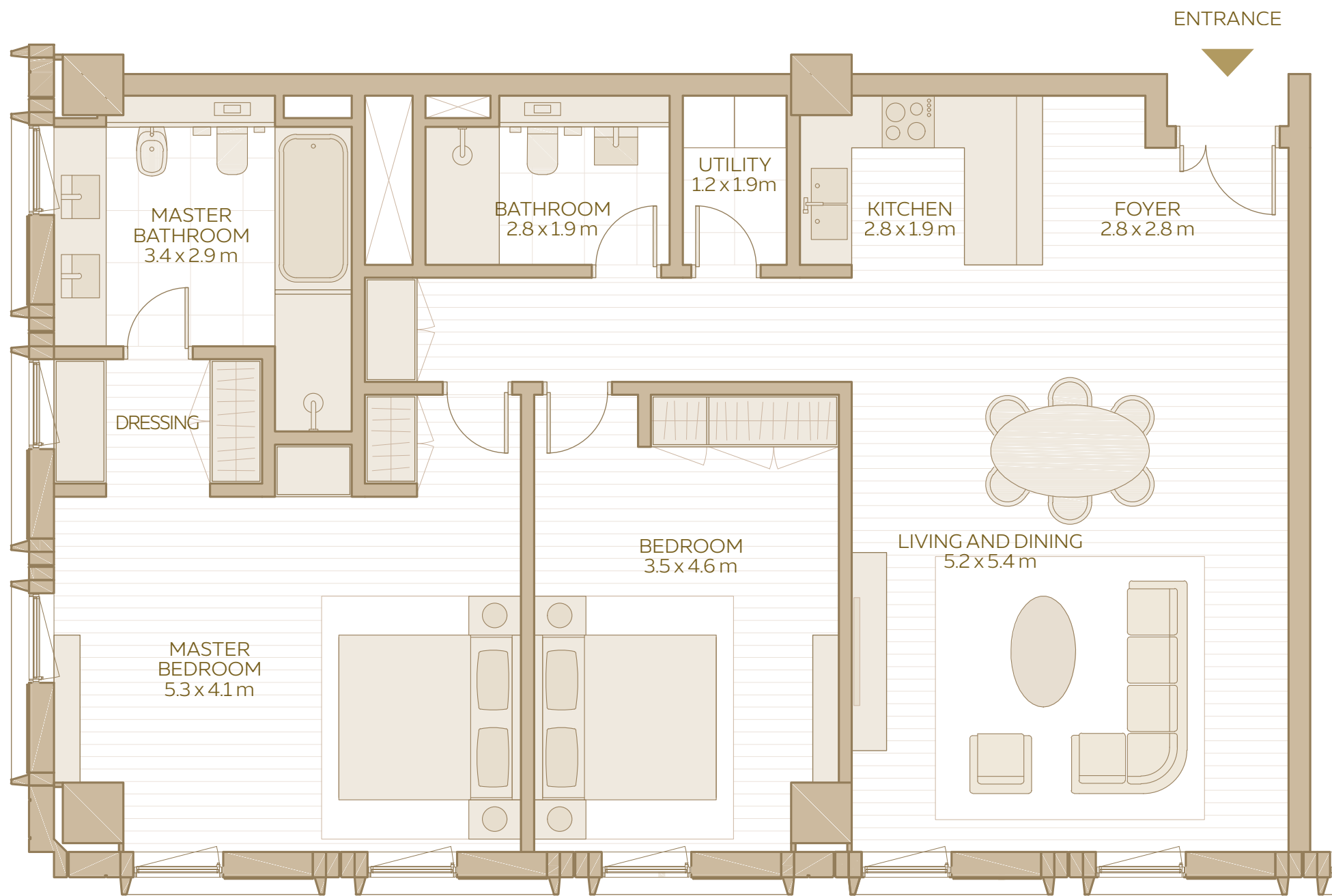


DISCLAIMER: 1. All room dimensions are in metres to the nearest decimal place, measured to structural elements, and exclude wall finishes and construction tolerances. 2. All dimensions have been provided by our consultant architects. 3. Areas are exclusive of partition walls, risers and terraces. 4. All materials, dimensions, drawings, features and amenities are approximate at the time of printing. 5. Actual area may vary from stated area. 6. Drawings not to scale E&OE. 7. Unit plans may exist in mirrored versions. 8. The developer reserves the right to make revisions to the floor plans and any features, materials, dimensions, drawings and amenities mentioned on this plan and in the brochure without notice.

AL WAHA

19 – UNIT PLANS

2-BEDROOM APARTMENT
(TYPE 4)

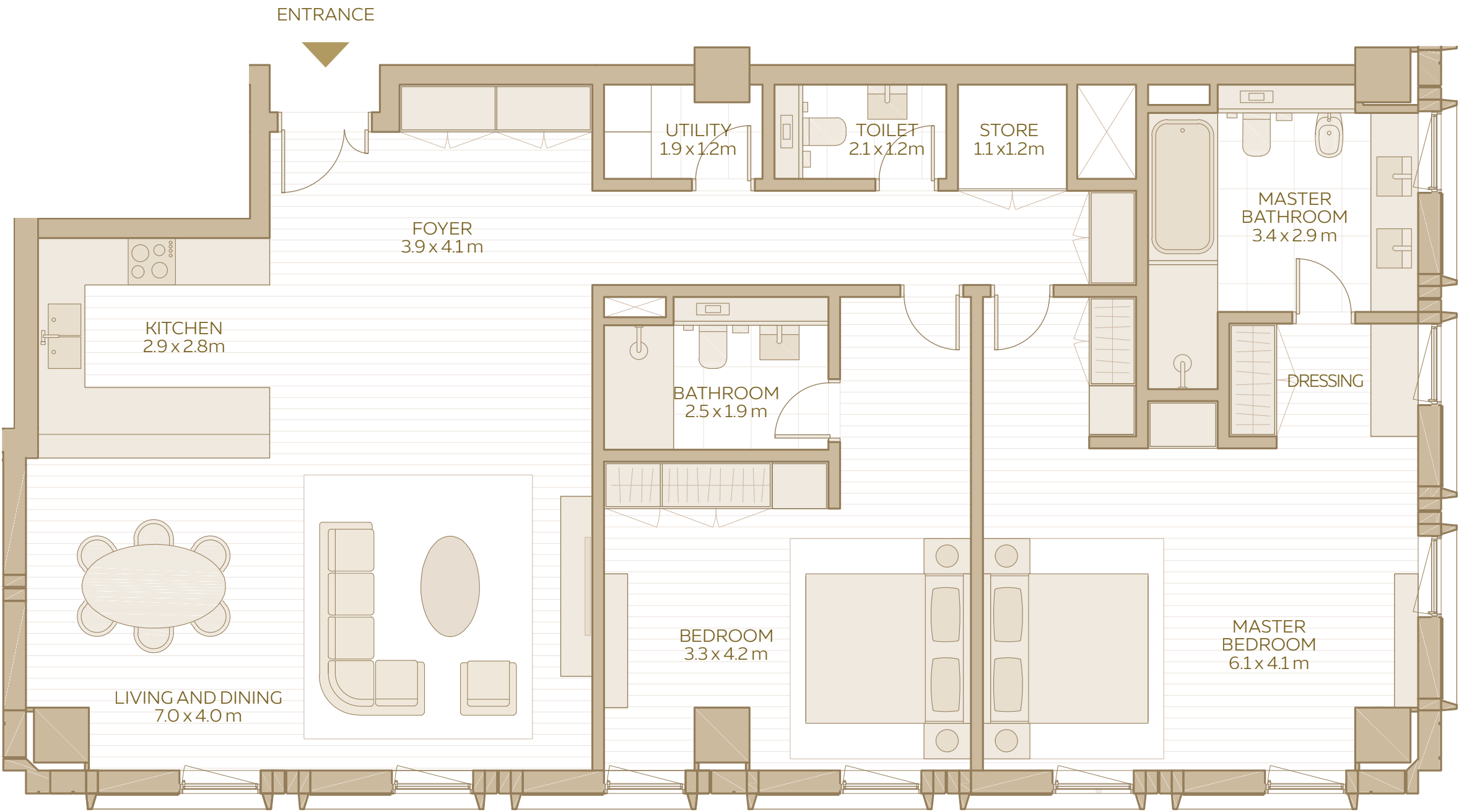


2-BEDROOM
APARTMENT
TYPE 4

TOTAL AREA:
127.70 SQM / 1,374.55 SQFT

AREA RANGE:
127.70 SQM - 127.72 SQM
1,374.55 SQFT - 1,374.77 SQFT

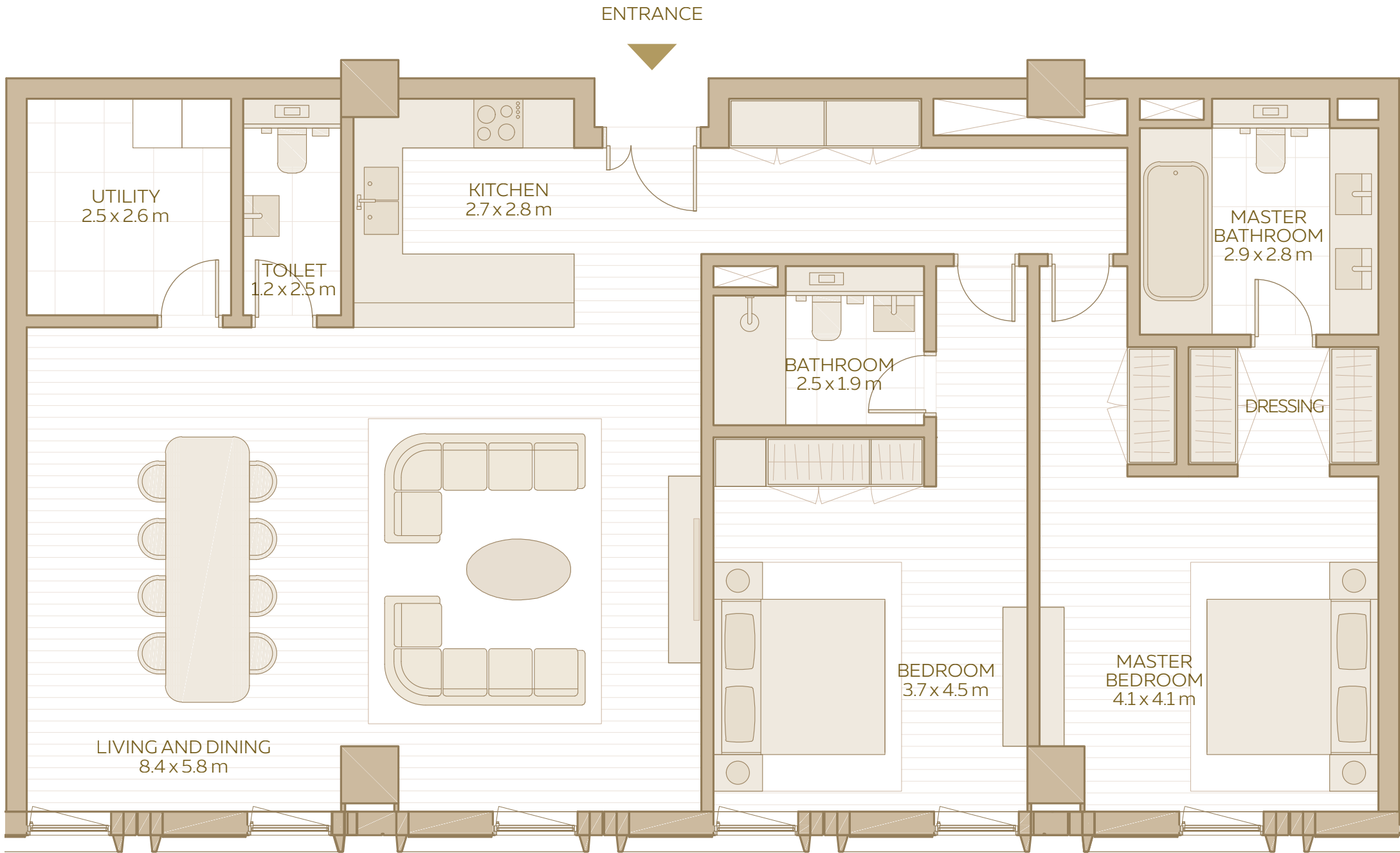
2-BEDROOM APARTMENT
(TYPE 5)



2-BEDROOM
APARTMENT
TYPE 5

TOTAL AREA:
153.30 SQM / 1,650.11 SQFT

2-BEDROOM APARTMENT
(TYPE 7)

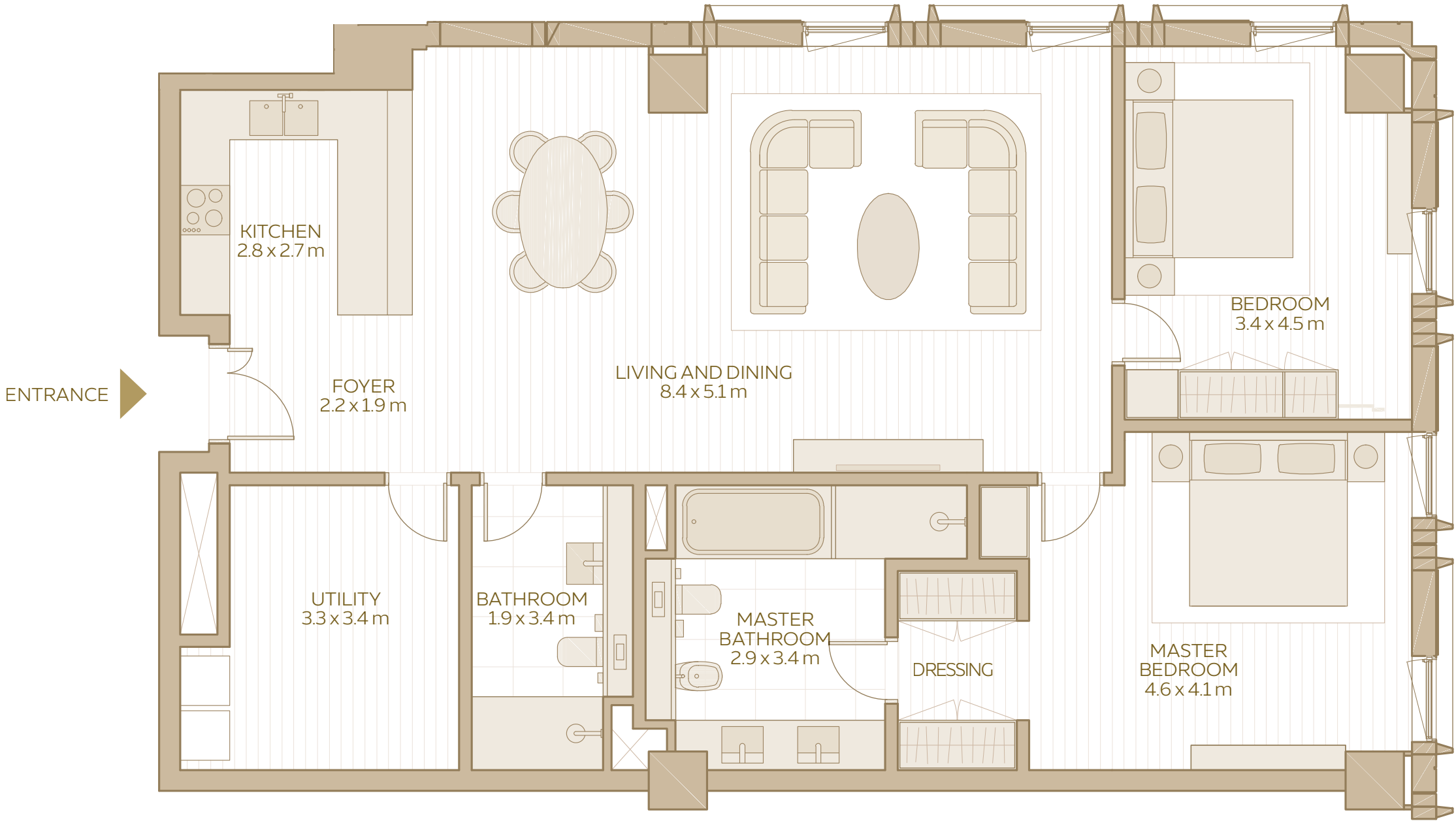


2-BEDROOM
APARTMENT
TYPE 7

TOTAL AREA:
146.19 SQM / 1,573.58 SQFT

AREA RANGE:
146.19 SQM - 147.90 SQM
1,573.58 SQFT - 1,591.98 SQFT

2-BEDROOM APARTMENT
(TYPE 8)

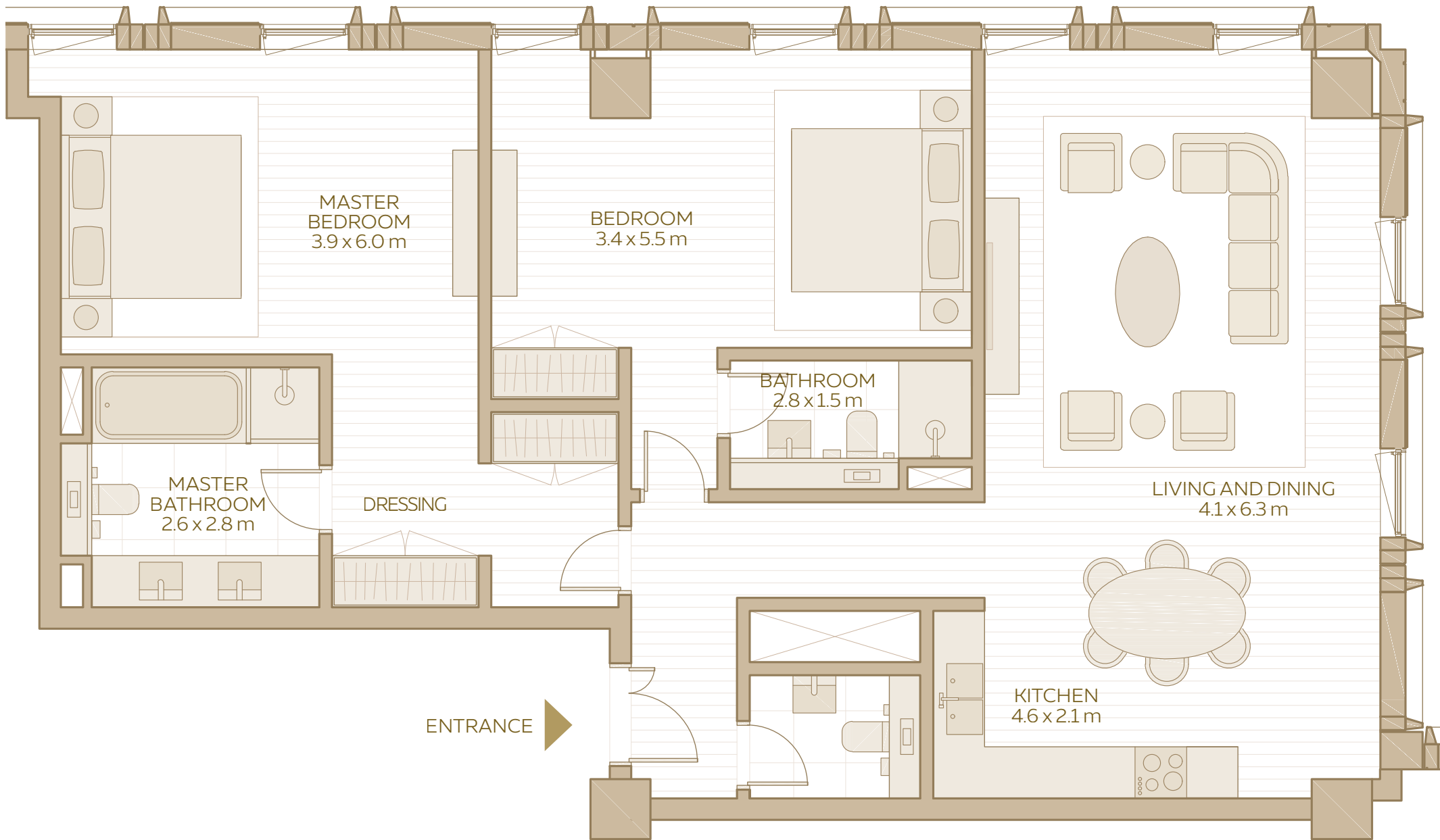


2-BEDROOM
APARTMENT
TYPE 8

TOTAL AREA:
131.90 SQM / 1,419.76 SQFT

AREA RANGE:
126.40 SQM - 131.90 SQM
1,360.56 SQFT - 1,419.76 SQFT

2-BEDROOM APARTMENT
(TYPE 9)



2-BEDROOM
APARTMENT
TYPE 9

TOTAL AREA:
124.23 SQM / 1,337.20 SQFT

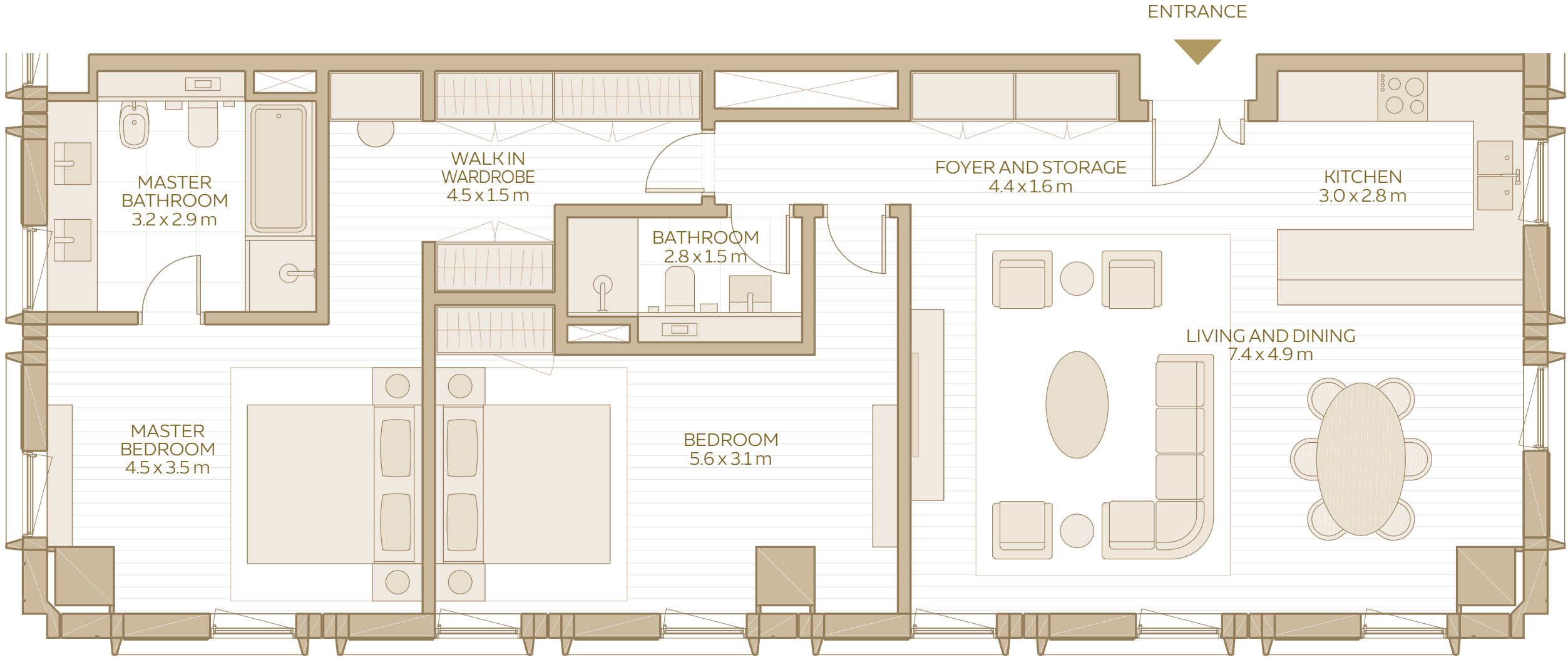
AREA RANGE:
122.44 SQM - 125.17 SQM
1,317.93 SQFT - 1,347.32 SQFT

2-BEDROOM APARTMENT
(TYPE 10)

2-BEDROOM
APARTMENT
TYPE 10

TOTAL AREA:
118.91 SQM / 1,279.94 SQFT

AREA RANGE:
118.91 SQM - 128.67 SQM
1,279.94 SQFT - 1384.99 SQFT



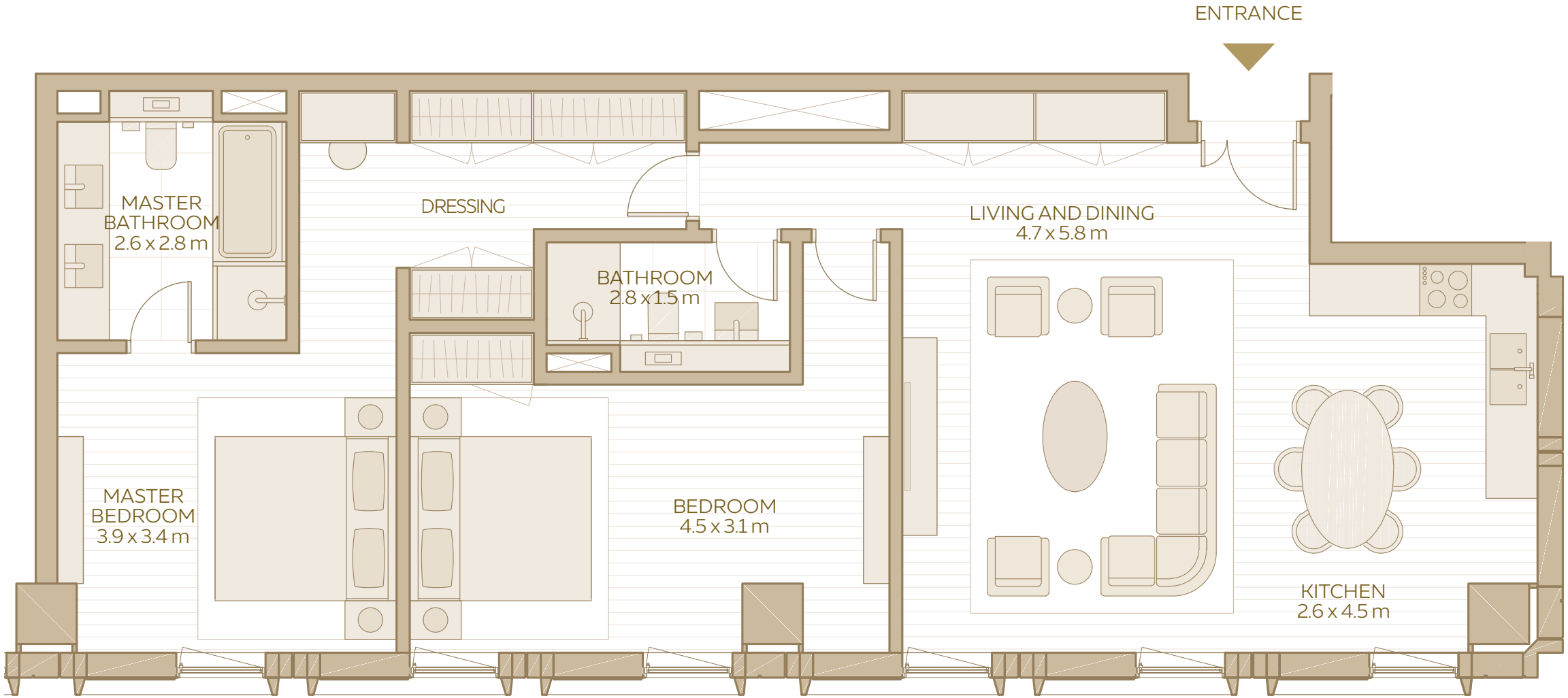
DISCLAIMER: 1. All room dimensions are in metres to the nearest decimal place, measured to structural elements, and exclude wall finishes and construction tolerances. 2. All dimensions have been provided by our consultant architects. 3. Areas are exclusive of partition walls, risers and terraces. 4. All materials, dimensions, drawings, features and amenities are approximate at the time of printing. 5. Actual area may vary from stated area. 6. Drawings not to scale E&OE. 7. Unit plans may exist in mirrored versions. 8. The developer reserves the right to make revisions to the floor plans and any features, materials, dimensions, drawings and amenities mentioned on this plan and in the brochure without notice.

2-BEDROOM APARTMENT
(TYPE 11)

2-BEDROOM
APARTMENT
TYPE 11

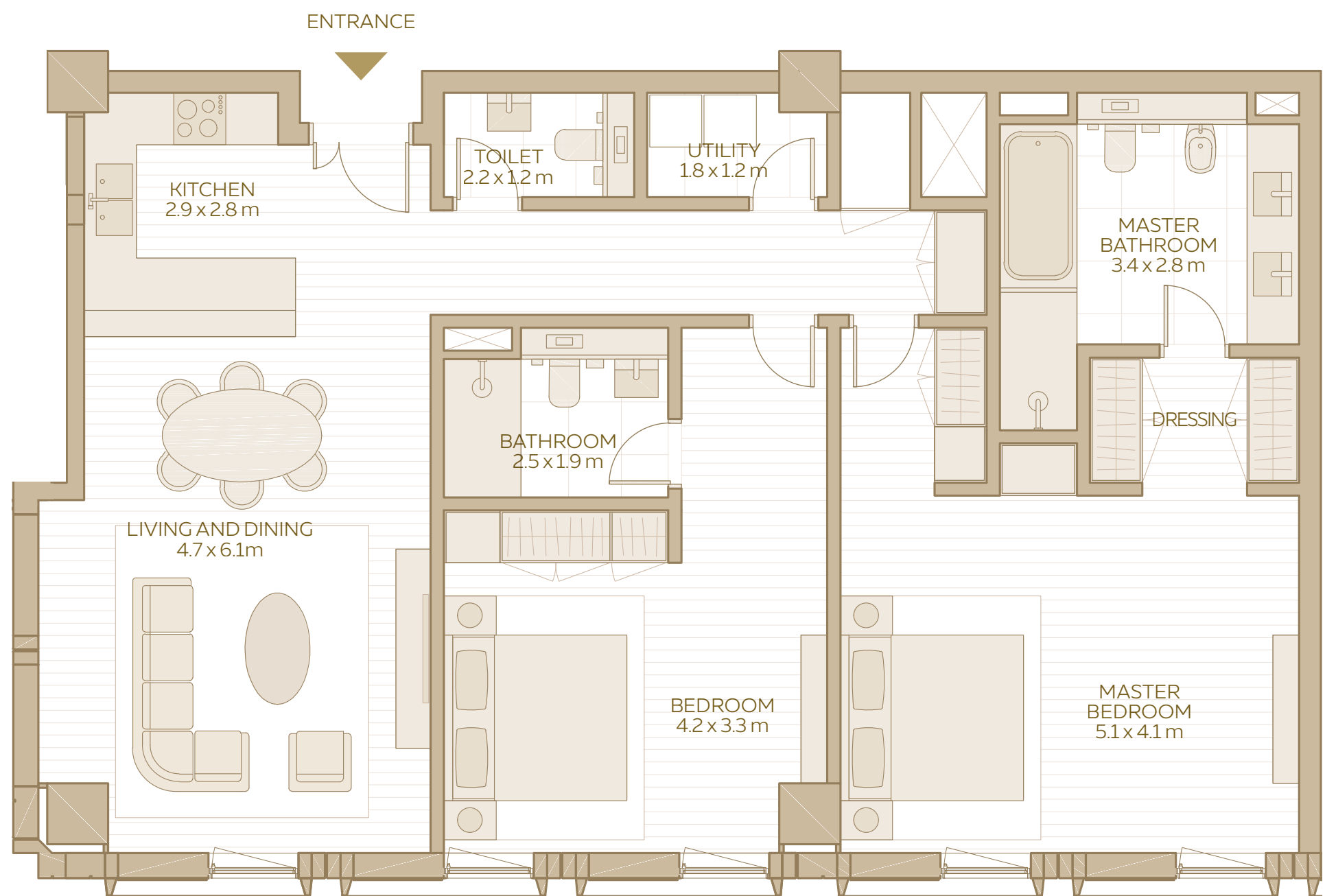
TOTAL AREA:
109.01 SQM / 1,173.37 SQFT

AREA RANGE:
109.01 SQM - 114.52 SQM
1,173.37 SQFT - 1,232.68 SQFT



DISCLAIMER: 1. All room dimensions are in metres to the nearest decimal place, measured to structural elements, and exclude wall finishes and construction tolerances. 2. All dimensions have been provided by our consultant architects. 3. Areas are exclusive of partition walls, risers and terraces. 4. All materials, dimensions, drawings, features and amenities are approximate at the time of printing. 5. Actual area may vary from stated area. 6. Drawings not to scale E&OE. 7. Unit plans may exist in mirrored versions. 8. The developer reserves the right to make revisions to the floor plans and any features, materials, dimensions, drawings and amenities mentioned on this plan and in the brochure without notice.

2-BEDROOM APARTMENT
(TYPE 12)

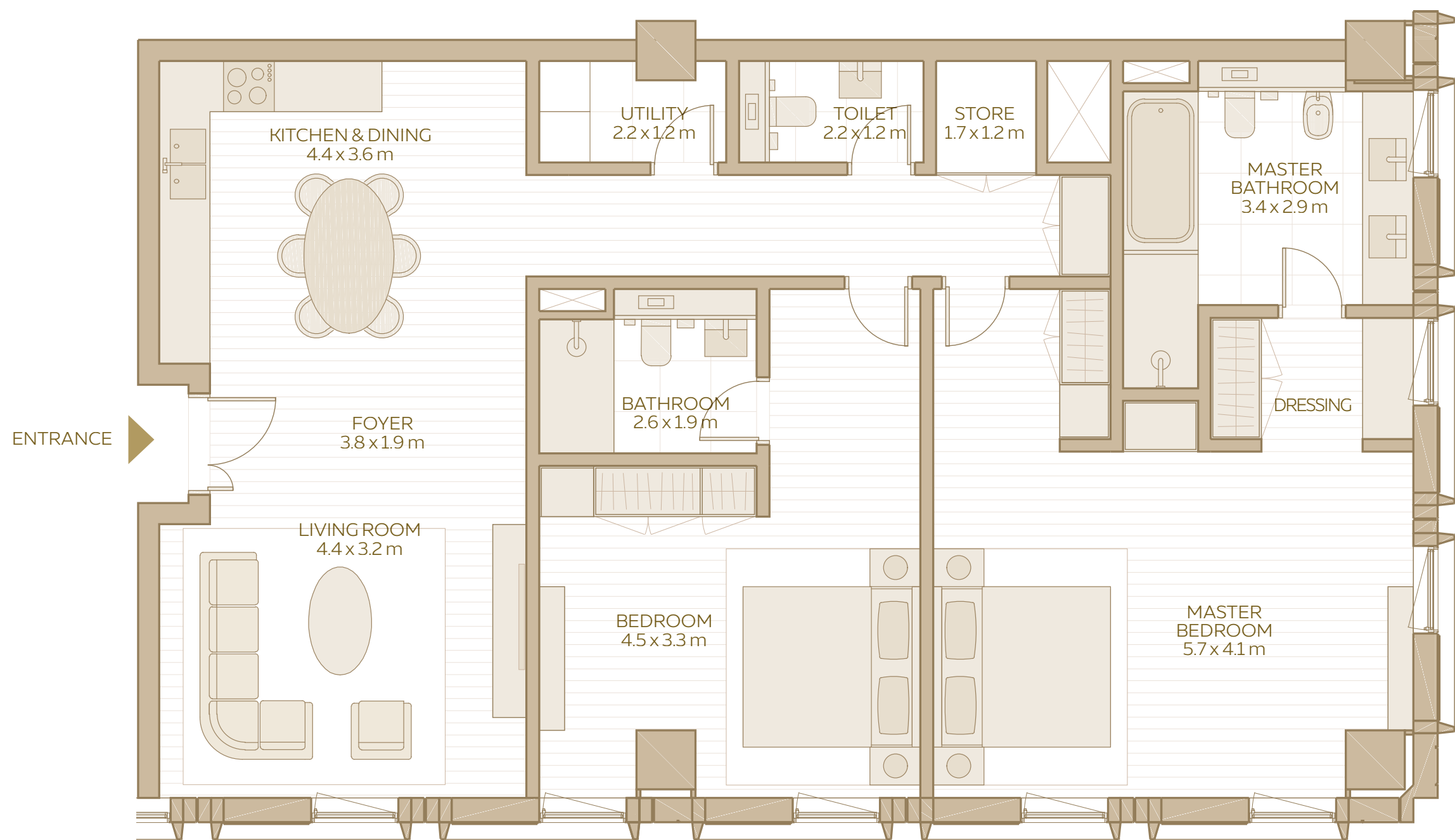


2-BEDROOM
APARTMENT
TYPE 12

TOTAL AREA:
128.17 SQM / 1,379.61 SQFT

AREA RANGE:
128.17 SQM - 128.64 SQM
1,379.61 SQFT - 1,384.67 SQFT

2-BEDROOM APARTMENT
(TYPE 13)

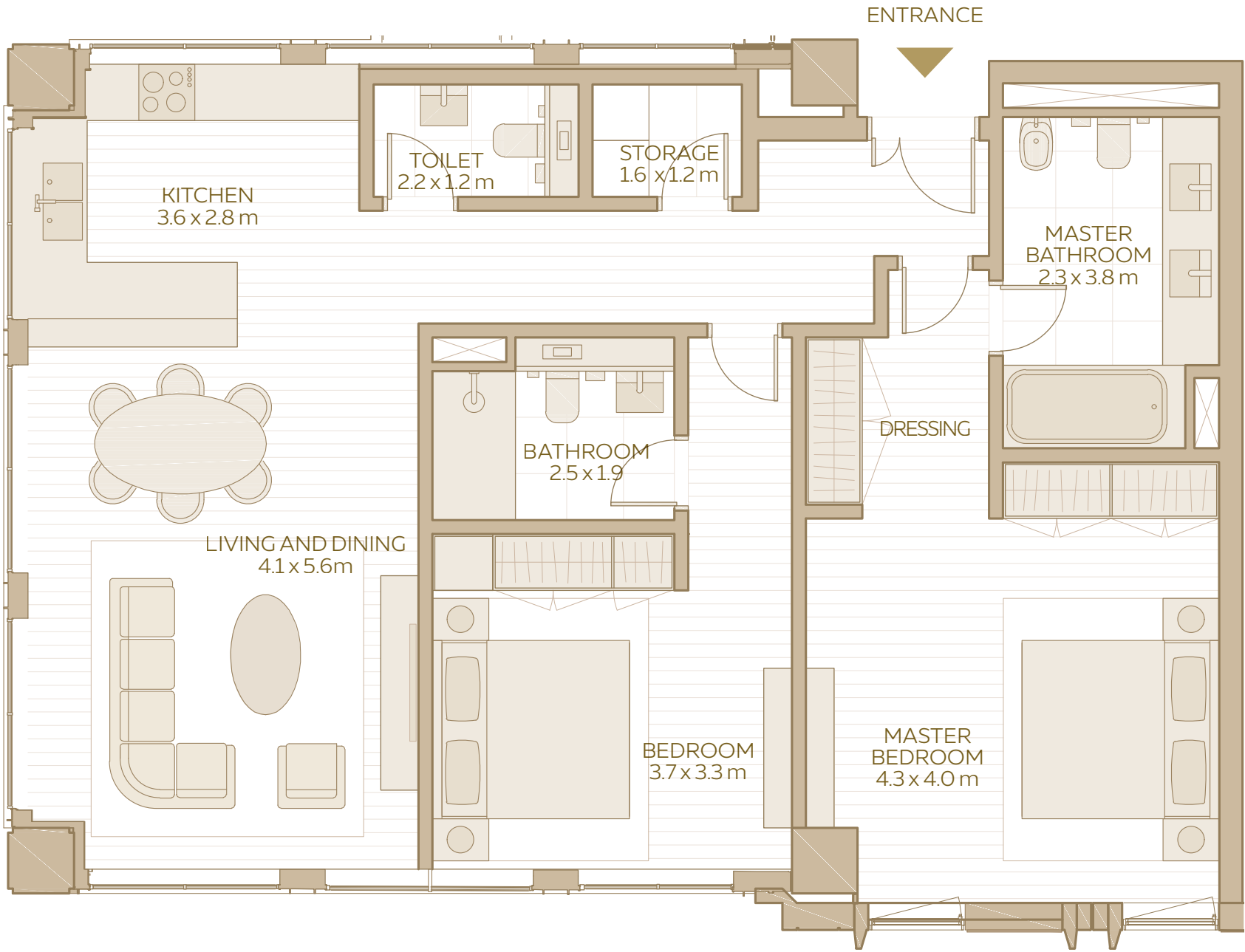


2-BEDROOM
APARTMENT
TYPE 13

TOTAL AREA:
133.86 SQM / 1,440.86 SQFT

AREA RANGE:
133.03 SQM - 133.86 SQM
1,431.92 SQFT - 1,440.86 SQFT

2-BEDROOM APARTMENT
(TYPE 14)



2-BEDROOM
APARTMENT
TYPE 14

TOTAL AREA:
113.22 SQM / 1,218.69 SQFT

AREA RANGE:
113.22 SQM - 113.43 SQM
1,218.69 SQFT - 1,220.95 SQFT



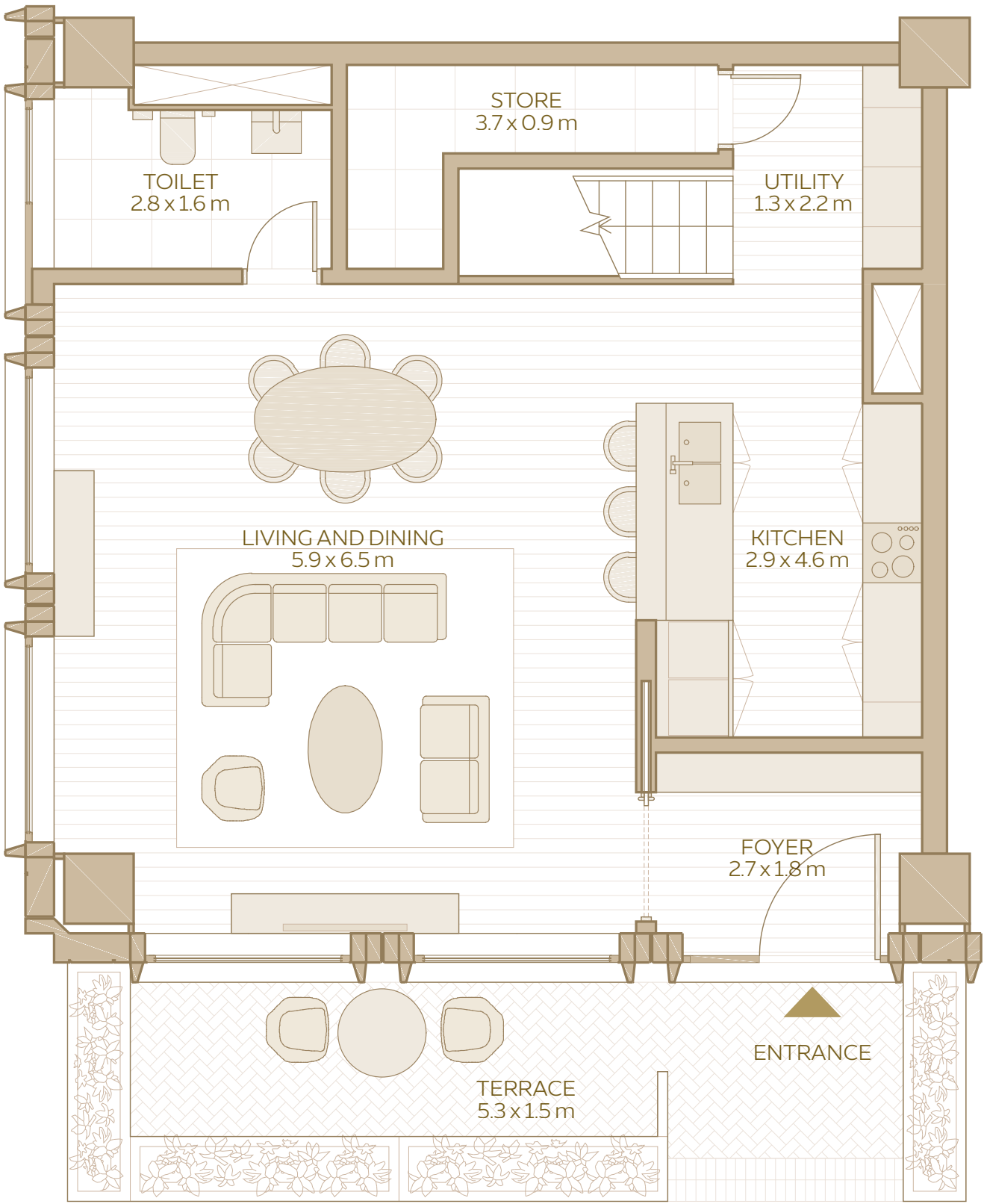
DISCLAIMER: 1. All room dimensions are in metres to the nearest decimal place, measured to structural elements, and exclude wall finishes and construction tolerances. 2. All dimensions have been provided by our consultant architects. 3. Areas are exclusive of partition walls, risers and terraces. 4. All materials, dimensions, drawings, features and amenities are approximate at the time of printing. 5. Actual area may vary from stated area. 6. Drawings not to scale E&OE. 7. Unit plans may exist in mirrored versions. 8. The developer reserves the right to make revisions to the floor plans and any features, materials, dimensions, drawings and amenities mentioned on this plan and in the brochure without notice.

AL WAHA

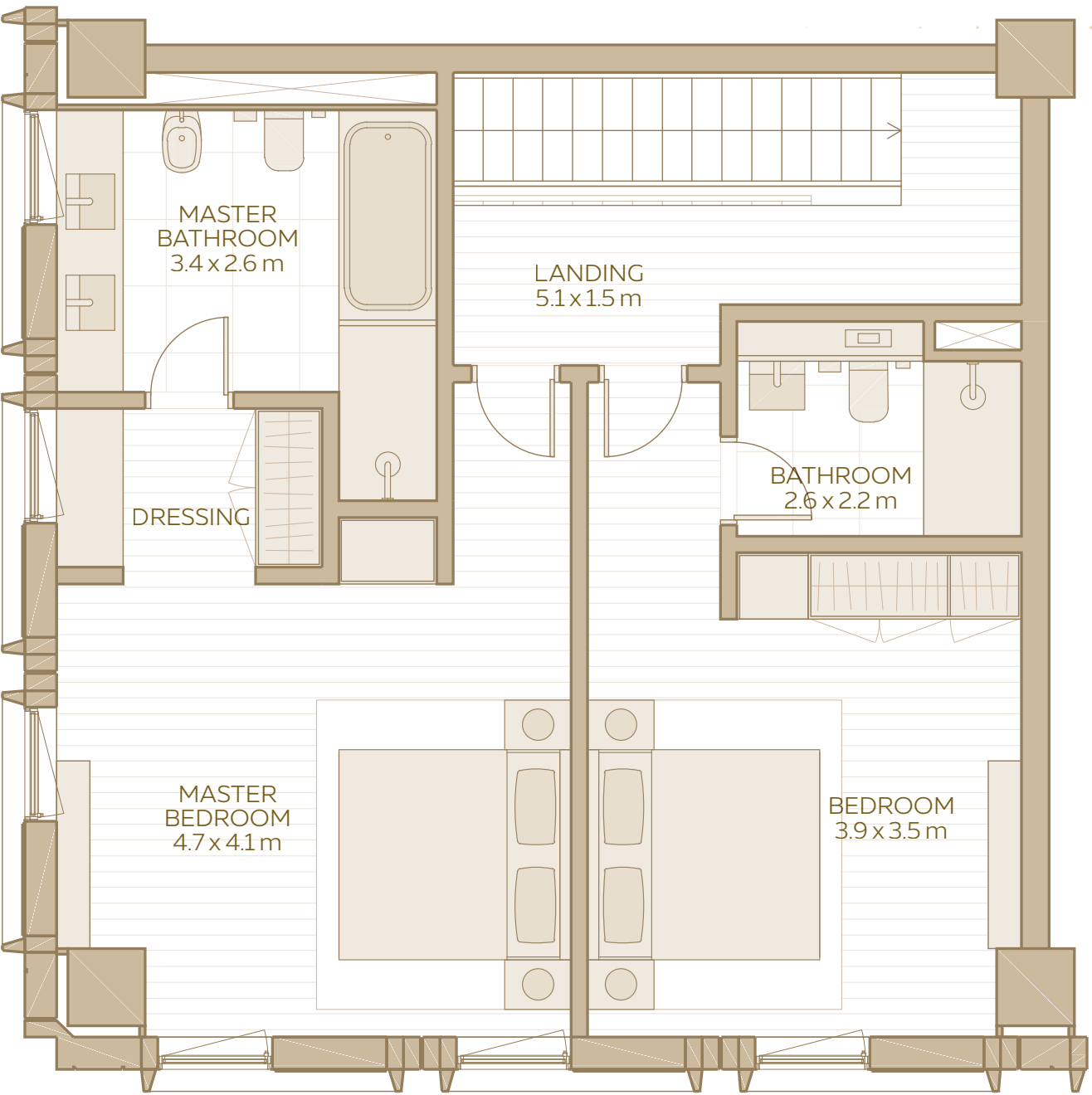
29 – UNIT PLANS

2-BEDROOM LOFT
(TYPE 1)

GROUND FLOOR



FIRST FLOOR



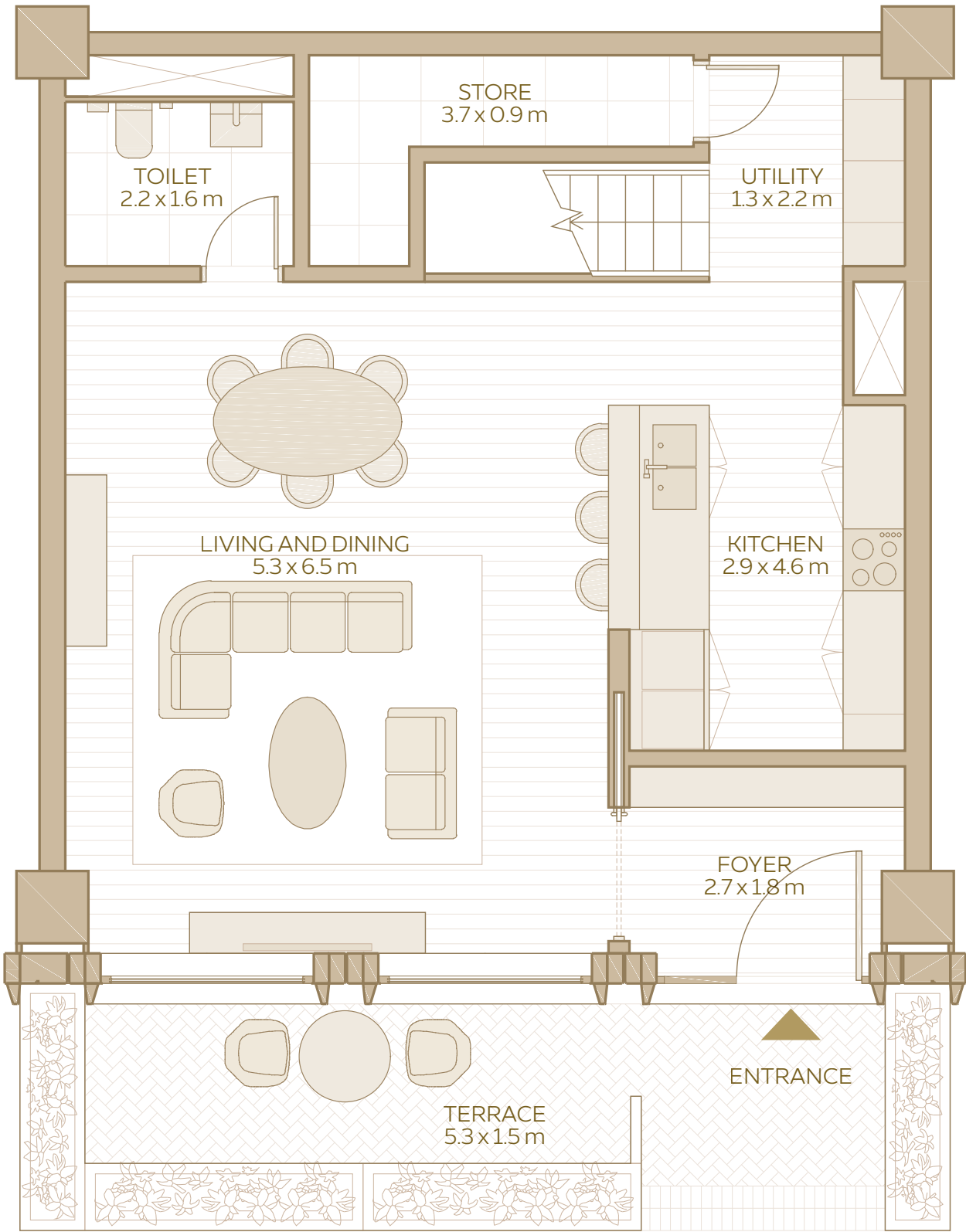
2-BEDROOM
LOFT
TYPE 1

TOTAL AREA:
158.10 SQM / 1,701.77 SQFT

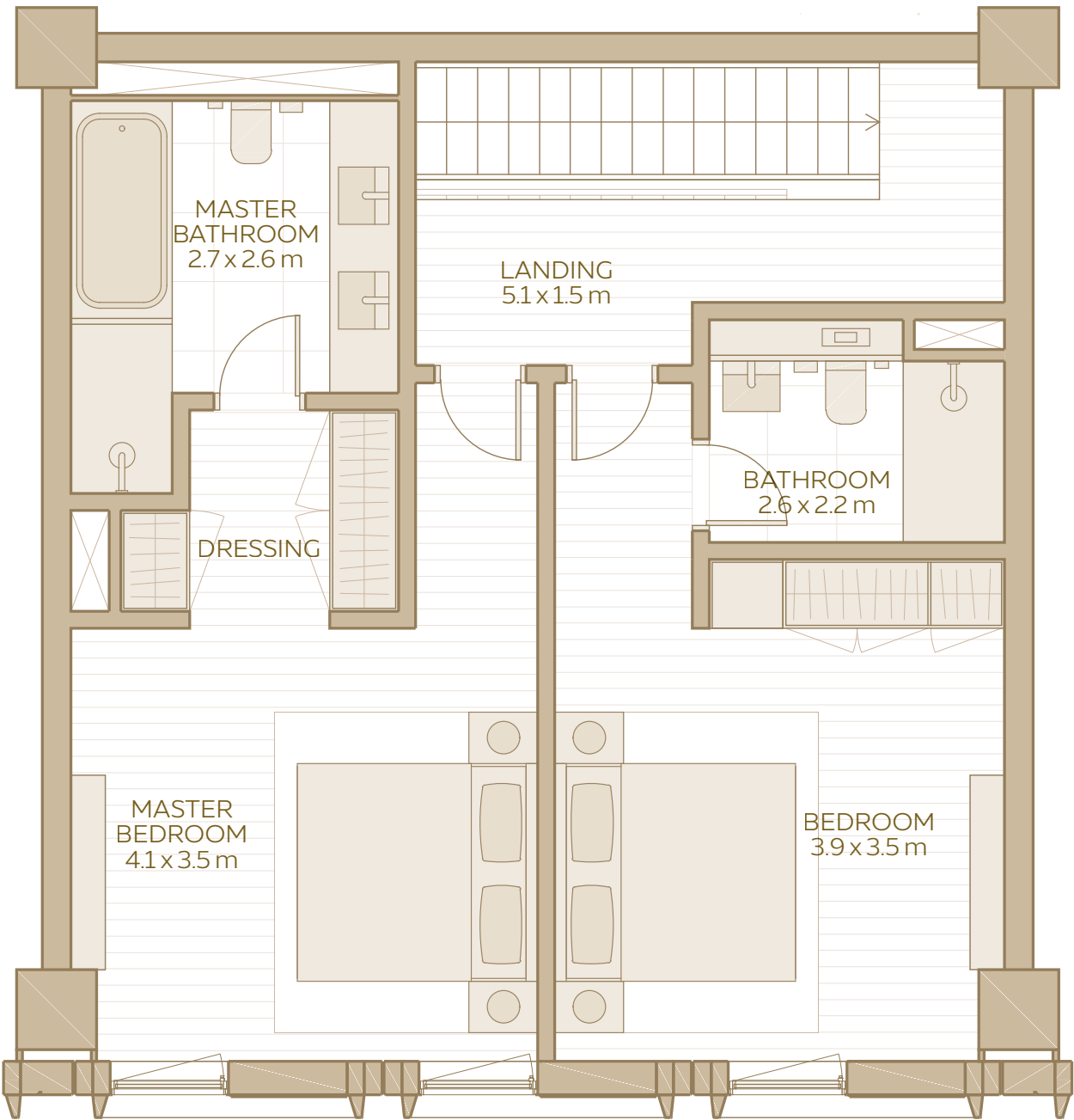
AREA RANGE:
158.10 SQM - 158.79 SQM
1,701.77 SQFT - 1,709.20 SQFT

2-BEDROOM LOFT
(TYPE 2)

GROUND FLOOR



FIRST FLOOR



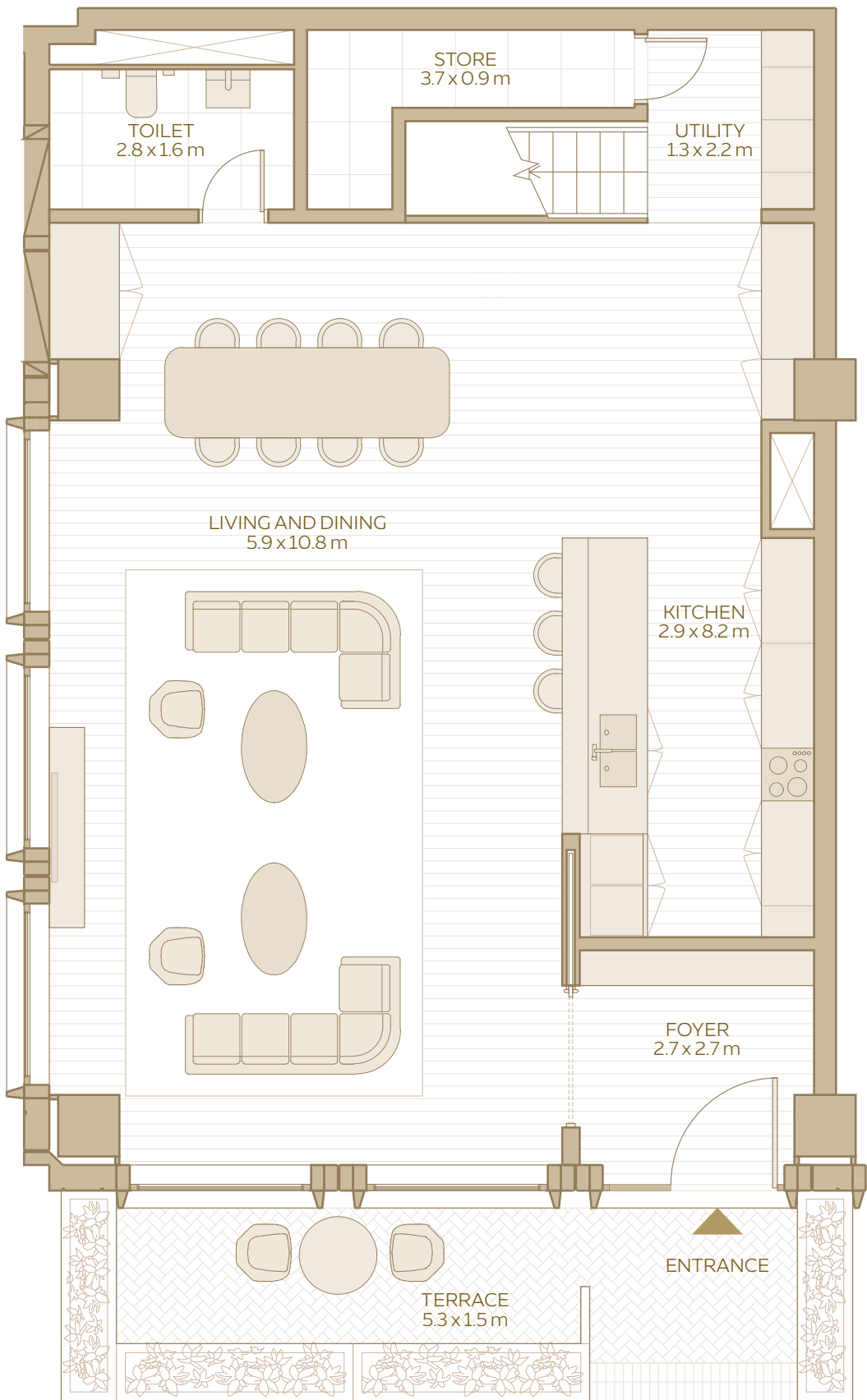
2-BEDROOM
LOFT
TYPE 2

TOTAL AREA:
147.55 SQM / 1,588.21 SQFT

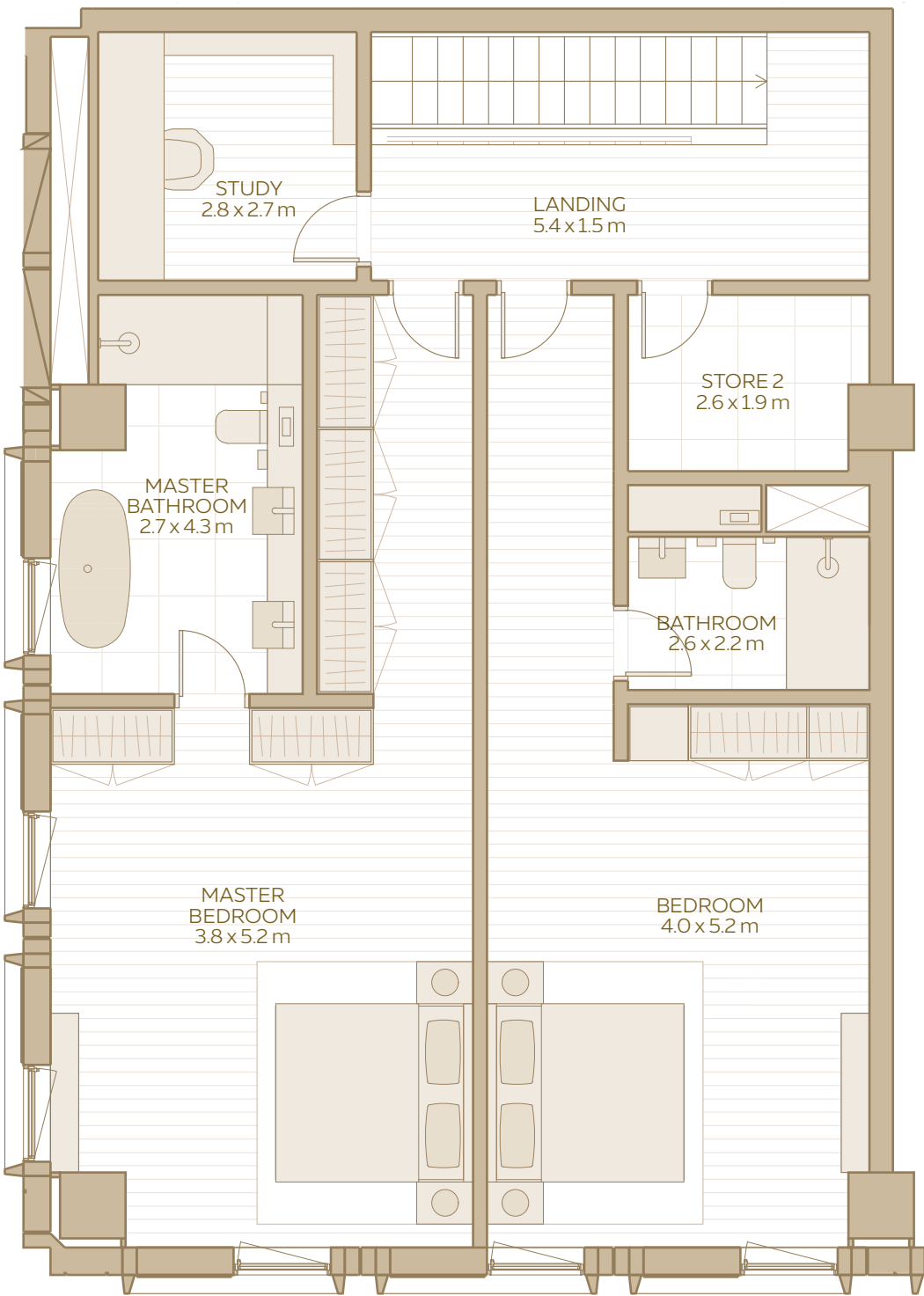
AREA RANGE:
147.55 SQM - 153.80 SQM
1,588.21 SQFT - 1,655.49 SQFT

2-BEDROOM LOFT
(TYPE 3)

GROUND FLOOR



FIRST FLOOR



2-BEDROOM
LOFT
TYPE 3

TOTAL AREA:
231.07 SQM / 2,487.22 SQFT

AREA RANGE:
223.70 SQM - 231.07 SQM
2,407.89 SQFT - 2,487.22 SQFT