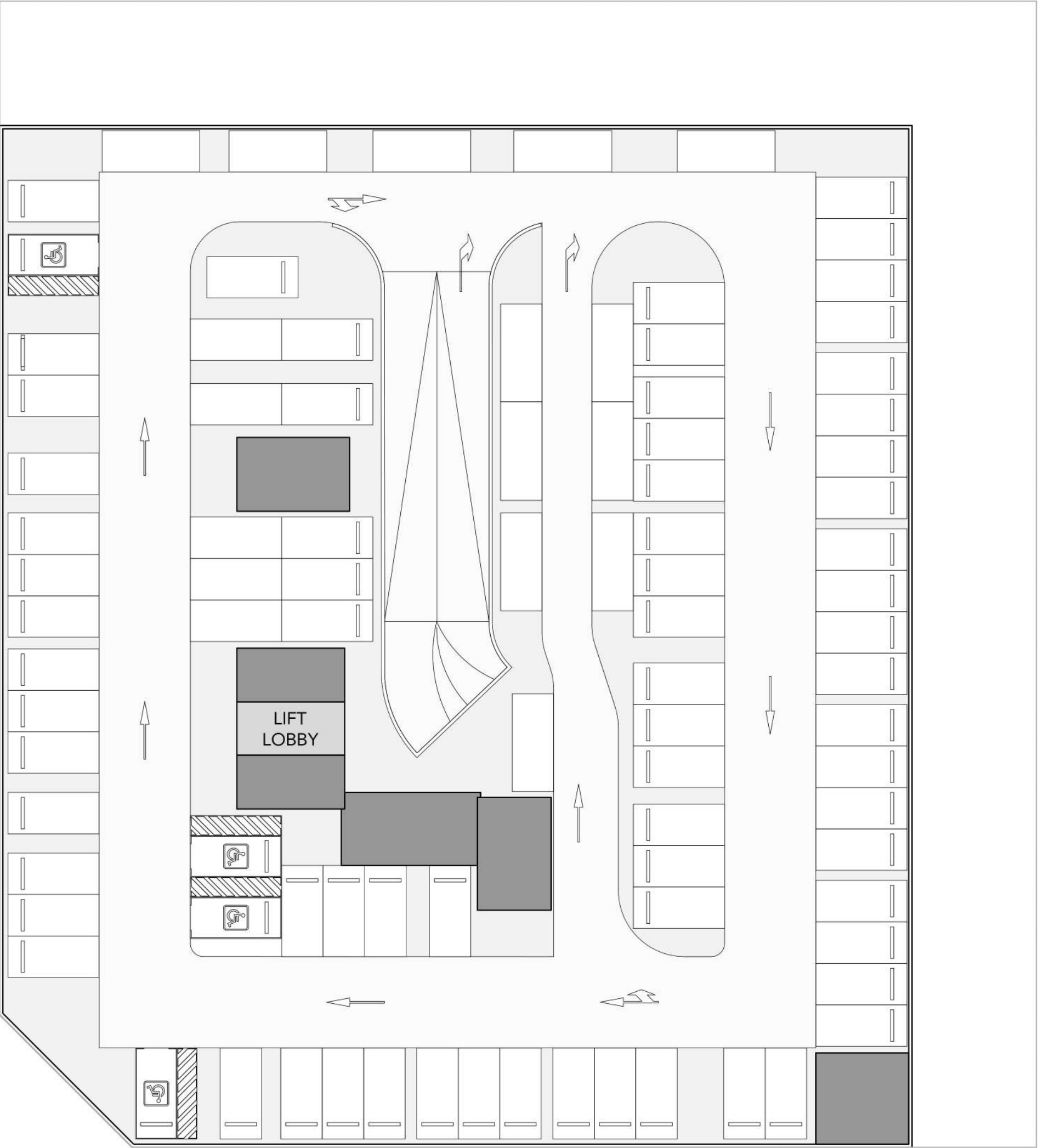




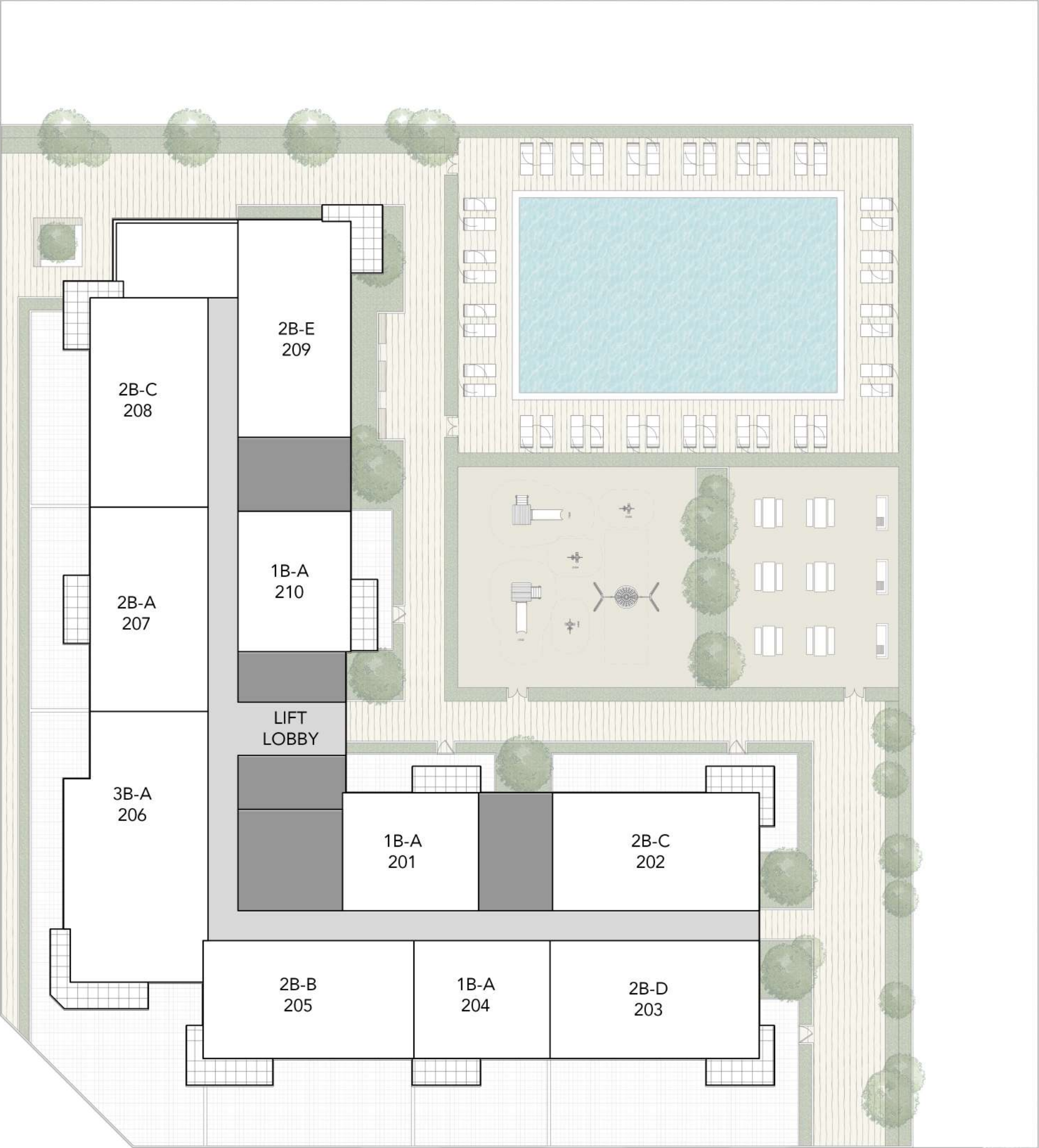
GROUND FLOOR



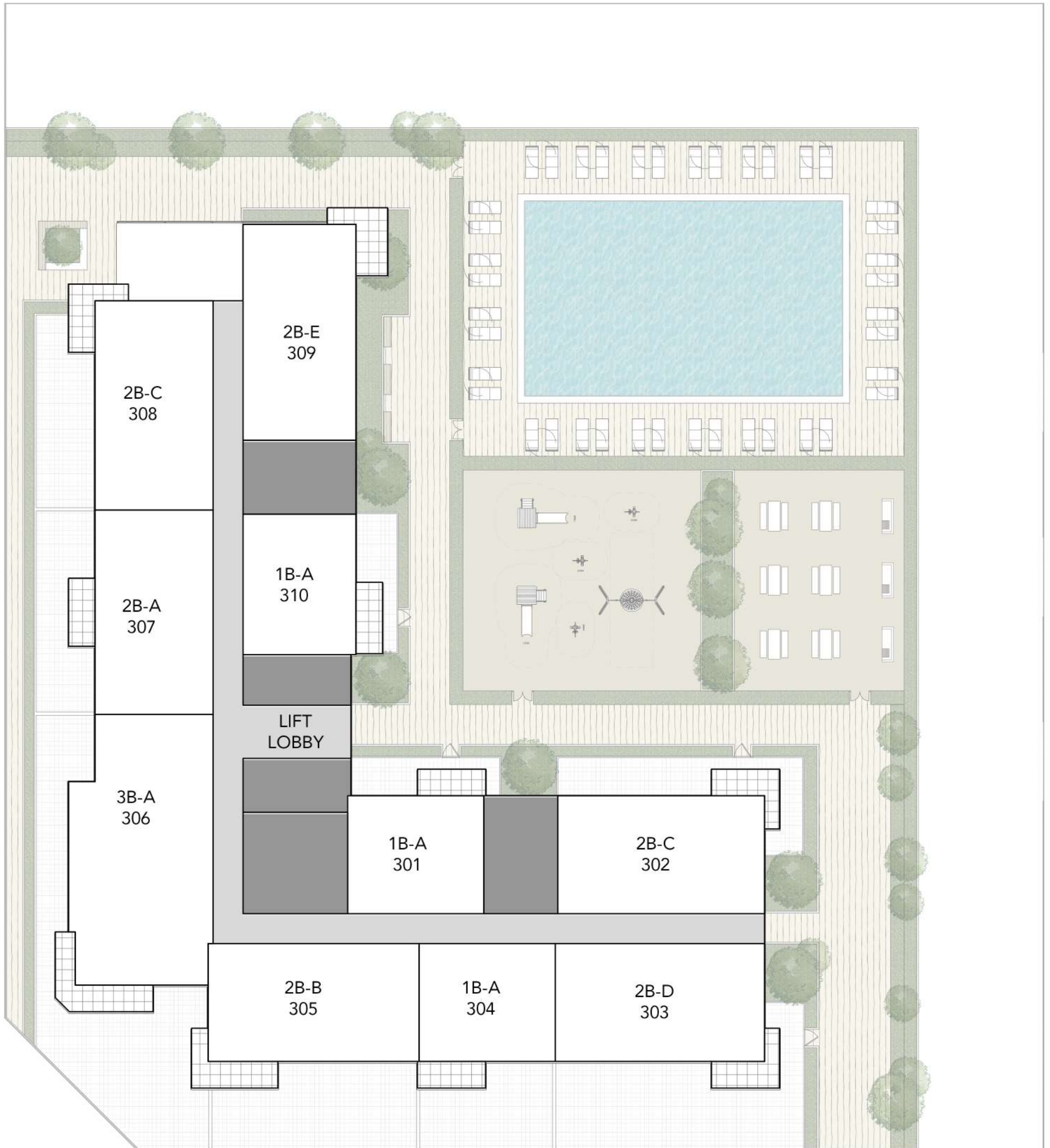
PODIUM FLOOR



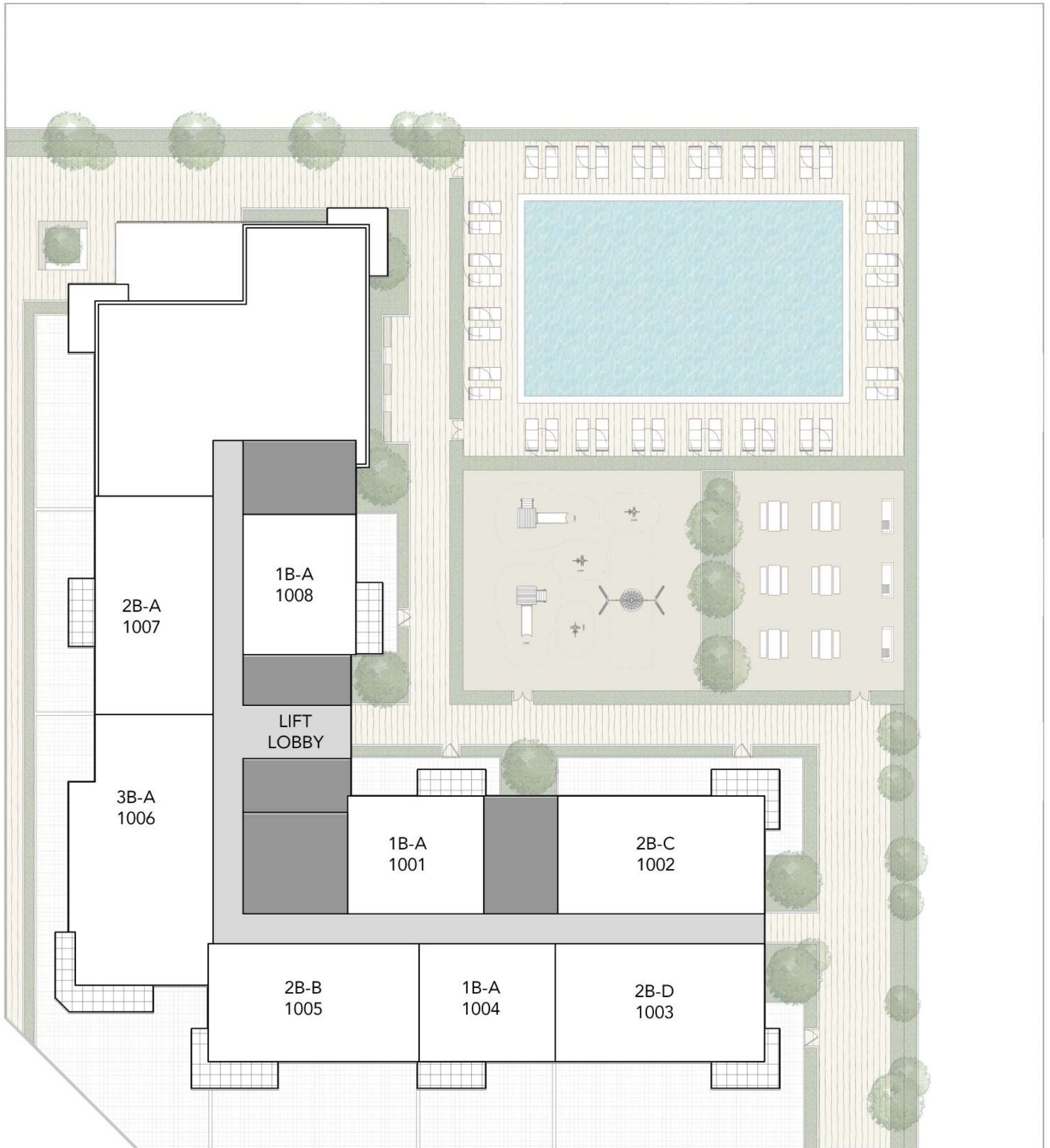
FIRST FLOOR



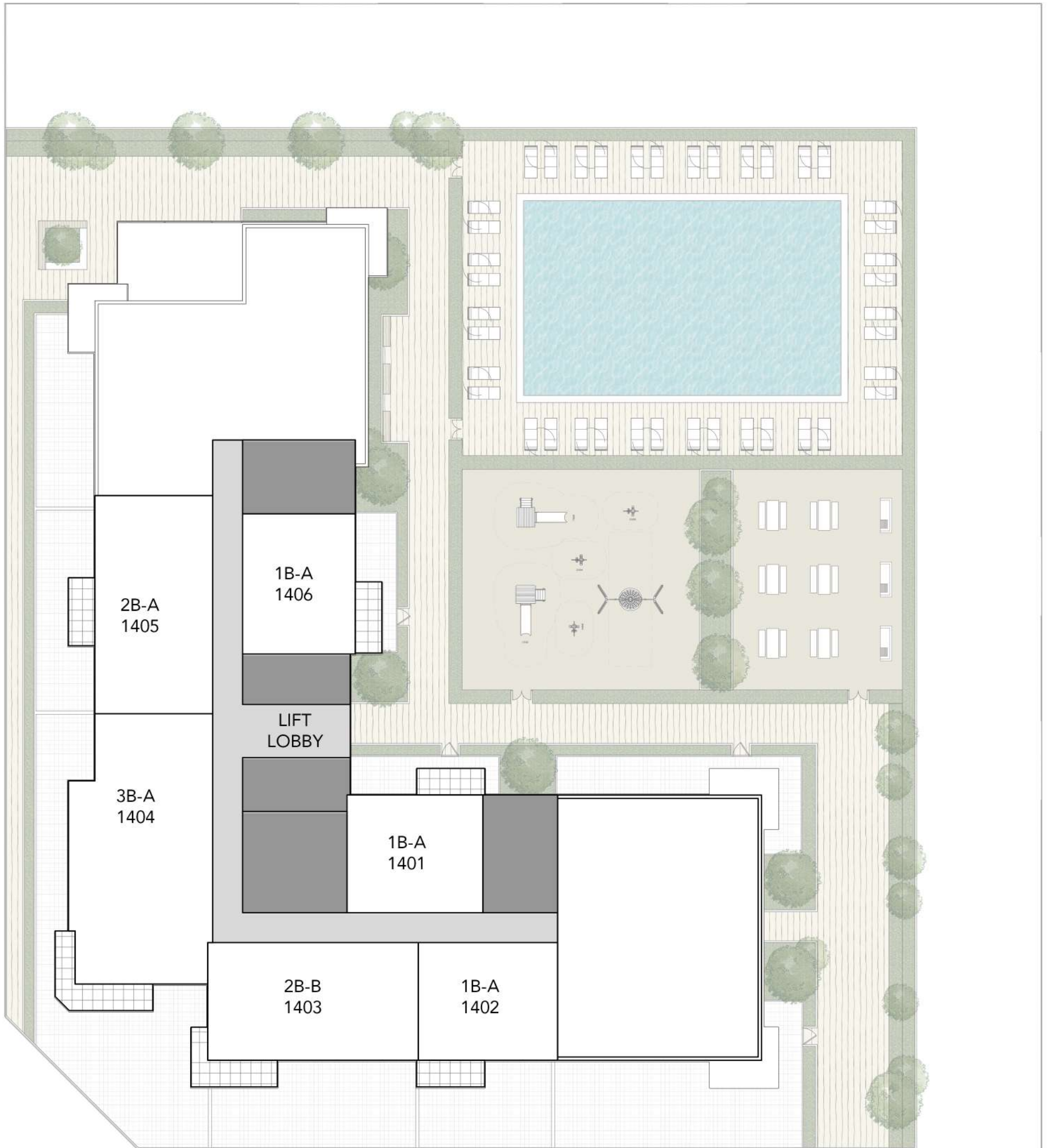
SECOND FLOOR



TYPICAL FLOOR 01
3RD-9TH FLOOR



TYPICAL FLOOR 02
10TH-13TH FLOOR



TYPICAL FLOOR 03
14TH-17TH FLOOR



*Balcony sizes vary

1 bedroom - Unit type A

Area	Min	Max
Suite	56.19 Sq.m / 604.82 Sq.ft	57.46 Sq.m / 618.49 Sq.ft
Balcony	6.53 Sq.m / 70.29 Sq.ft	6.57 Sq.m / 70.72 Sq.ft
Total built-up	62.72 Sq.m / 675.11 Sq.ft	64.03 Sq.m / 689.21 Sq.ft

ALTON

Disclaimer

1. All room dimensions are in metric and measured to structural elements and exclude wall finishes and construction tolerances. 2. All dimensions have been provided by our consultant architects. 3. All materials, dimensions, drawings features and amenities are approximate at the time of printing. 4. Actual area may vary from stated area. Drawings not to scale E&OE. The developer reserves the right to make revisions to the floor plans and any features, materials, dimensions, drawings and amenities mentioned in this brochure without notice.



*Balcony sizes vary

2 bedroom - Unit type A

Area	Min	Max
Suite	84.28 Sq.m / 907.18 Sq.ft	84.44 Sq.m / 908.90 Sq.ft
Balcony	6.36 Sq.m / 68.46 Sq.ft	6.53 Sq.m / 70.29 Sq.ft
Total built-up	90.81 Sq.m / 977.47 Sq.ft	90.80 Sq.m / 977.36 Sq.ft

ALTON

Disclaimer

1. All room dimensions are in metric and measured to structural elements and exclude wall finishes and construction tolerances. 2. All dimensions have been provided by our consultant architects. 3. All materials, dimensions, drawings features and amenities are approximate at the time of printing. 4. Actual area may vary from stated area. Drawings not to scale E&OE. The developer reserves the right to make revisions to the floor plans and any features, materials, dimensions, drawings and amenities mentioned in this brochure without notice.



*Balcony sizes vary

2 bedroom - Unit type B

Suite	85.95 Sq.m / 925.16 Sq.ft
Balcony	10.11 Sq.m / 108.82 Sq.ft
Total built-up	96.06 Sq.m / 1033.98 Sq.ft

ALTON

Disclaimer

1. All room dimensions are in metric and measured to structural elements and exclude wall finishes and construction tolerances. 2. All dimensions have been provided by our consultant architects. 3. All materials, dimensions, drawings features and amenities are approximate at the time of printing. 4. Actual area may vary from stated area. Drawings not to scale E&OE. The developer reserves the right to make revisions to the floor plans and any features, materials, dimensions, drawings and amenities mentioned in this brochure without notice.



*Balcony sizes vary

2 bedroom - Unit type C

Area	Min	Max
Suite	84.93 Sq.m / 914.18 Sq.ft	86.56 Sq.m / 931.72 Sq.ft
Balcony	7.59 Sq.m / 81.70 Sq.ft	8.51 Sq.m / 91.60 Sq.ft
Total built-up	92.52 Sq.m / 995.88 Sq.ft	95.07 Sq.m / 1023.32 Sq.ft

Disclaimer

1. All room dimensions are in metric and measured to structural elements and exclude wall finishes and construction tolerances. 2. All dimensions have been provided by our consultant architects. 3. All materials, dimensions, drawings features and amenities are approximate at the time of printing. 4. Actual area may vary from stated area. Drawings not to scale E&OE. The developer reserves the right to make revisions to the floor plans and any features, materials, dimensions, drawings and amenities mentioned in this brochure without notice.

ALTON



*Balcony sizes vary

2 bedroom - Unit type D

Suite	85.78 Sq.m / 923.33 Sq.ft
Balcony	8.49 Sq.m / 91.39 Sq.ft
Total built-up	94.27 Sq.m / 1014.71 Sq.ft

ALTON

Disclaimer

1. All room dimensions are in metric and measured to structural elements and exclude wall finishes and construction tolerances. 2. All dimensions have been provided by our consultant architects. 3. All materials, dimensions, drawings features and amenities are approximate at the time of printing. 4. Actual area may vary from stated area. Drawings not to scale E&OE. The developer reserves the right to make revisions to the floor plans and any features, materials, dimensions, drawings and amenities mentioned in this brochure without notice.



*Balcony sizes vary

2 bedroom - Unit type E

Suite	91.31 Sq.m / 982.85 Sq.ft
Balcony	8.39 Sq.m / 90.31 Sq.ft
Total built-up	99.70 Sq.m / 1073.16 Sq.ft

Disclaimer

1. All room dimensions are in metric and measured to structural elements and exclude wall finishes and construction tolerances. 2. All dimensions have been provided by our consultant architects. 3. All materials, dimensions, drawings features and amenities are approximate at the time of printing. 4. Actual area may vary from stated area. Drawings not to scale E&OE. The developer reserves the right to make revisions to the floor plans and any features, materials, dimensions, drawings and amenities mentioned in this brochure without notice.

ALTON



*Balcony sizes vary

3 bedroom - Unit type A

Suite	129.07 Sq.m / 1389.30 Sq.ft
Balcony	12.84 Sq.m / 138.21 Sq.ft
Total built-up	141.91 Sq.m / 1527.51 Sq.ft

Disclaimer

1. All room dimensions are in metric and measured to structural elements and exclude wall finishes and construction tolerances. 2. All dimensions have been provided by our consultant architects. 3. All materials, dimensions, drawings features and amenities are approximate at the time of printing. 4. Actual area may vary from stated area. Drawings not to scale E&OE. The developer reserves the right to make revisions to the floor plans and any features, materials, dimensions, drawings and amenities mentioned in this brochure without notice.

ALTON