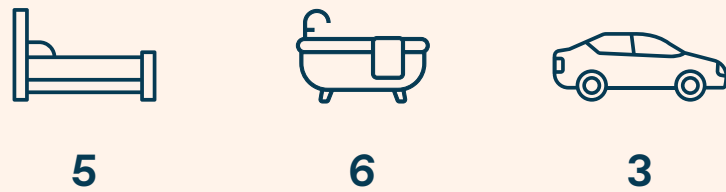
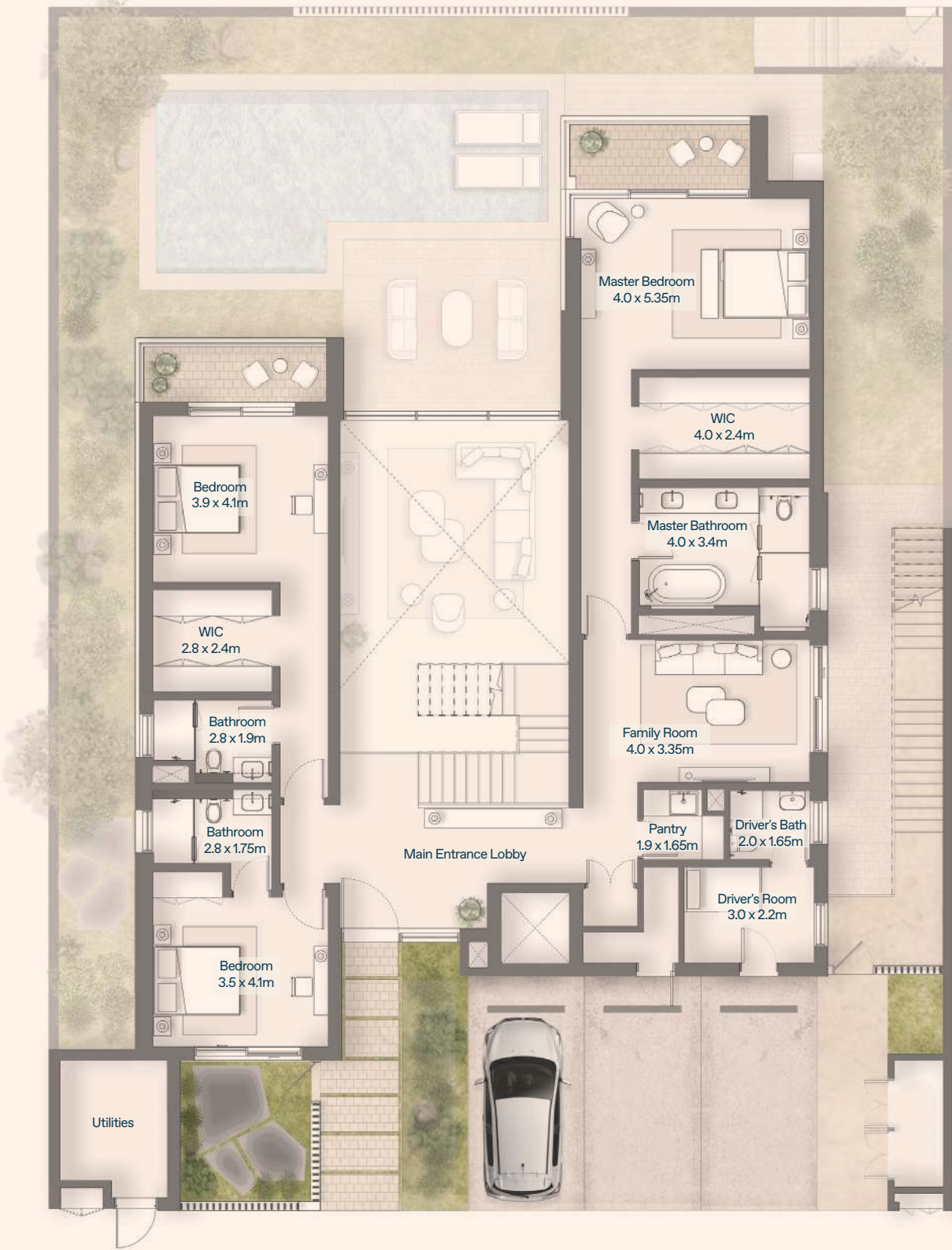


GEMINI VILLA

5 Bedrooms



| PLOT AREA                                | 588 - 677 SQM | 6,329 - 7,287 SQ.FT |
|--|---------------|---------------------|
| Ground Floor                             | 199 SQM       |                     |
| Lower Ground Floor                       | 256 SQM       |                     |
| Balconies                                | 13 SQM        |                     |
| Total SA                                 | 468 SQM       | 5,041 SQ.FT         |
| TOTAL BUA                                | 547 SQM       | 5,889 SQ.FT         |
| Including Service Rooms & Covered Garage |               |                     |



Ground Floor



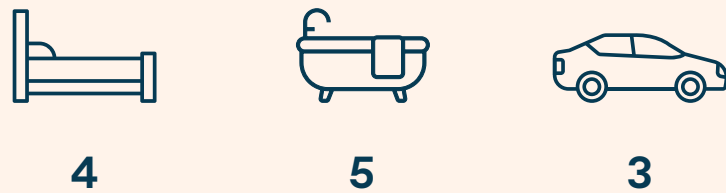
Lower Ground Floor

(1) All room dimensions are measured to structural elements and exclude wall finishes. Variation due to construction tolerances may apply. (2) All dimensions and drawings are provided by our consultant architects and are subject to change. (3) The actual of the unit may vary from the stated area. (4) The developer reserves the right to revise or alter any part of the development without prior notice, at its absolute discretion, and without any liability. (5) Floor plans may be mirrored depending on the unit's location within the master plan. (6) All landscaping, swimming pools and furniture shown are not included in the property and for illustrative purposes only. (7) The final orientation of each unit will be shown in the parcel layout and may differ from that shown in the floor plans.



# GEMINI VILLA

4 Bedrooms



|  |                |                    |
|--|----------------|--------------------|
| <b>PLOT AREA</b>                         | <b>546 SQM</b> | <b>5,877 SQ.FT</b> |
| Ground Floor                             | 167 SQM        |                    |
| Lower Ground Floor                       | 197 SQM        |                    |
| Balconies                                | 13 SQM         |                    |
| <b>Total SA</b>                          | <b>377 SQM</b> | <b>4,050 SQ.FT</b> |
| <b>TOTAL BUA</b>                         | <b>450 SQM</b> | <b>4,839 SQ.FT</b> |
| Including Service Rooms & Covered Garage |                |                    |

(1) All room dimensions are measured to structural elements and exclude wall finishes. Variation due to construction tolerances may apply. (2) All dimensions and drawings are provided by our consultant architects and are subject to change. (3) The actual of the unit may vary from the stated area. (4) The developer reserves the right to revise or alter any part of the development without prior notice, at its absolute discretion, and without any liability. (5) Floor plans may be mirrored depending on the unit's location within the master plan. (6) All landscaping, swimming pools and furniture shown are not included in the property and for illustrative purposes only. (7) The final orientation of each unit will be shown in the parcel layout and may differ from that shown in the floor plans.



Ground Floor

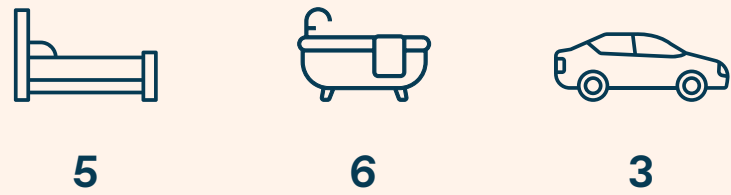


Lower Ground Floor



DOUBLE HEIGHT VILLA

5 Bedrooms



| PLOT AREA                                | 588.00 - 667.50 SQM | 6,329 - 7,185 SQ.FT |
|--|---------------------|---------------------|
| Ground Floor                             | 232 SQM             |                     |
| First Floor                              | 196 SQM             |                     |
| Balconies                                | 14 SQM              |                     |
| Total SA                                 | 442 SQM             | 4,758 SQ.FT         |
| TOTAL BUA                                | 514 SQM             | 5,528 SQ.FT         |
| Including Service Rooms & Covered Garage |                     |                     |



Ground Floor



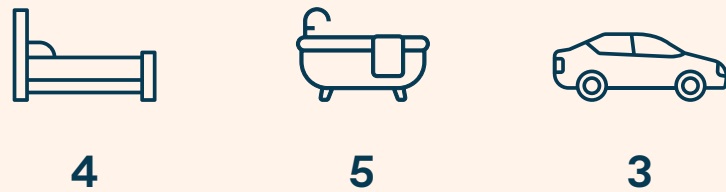
First Floor

(1) All room dimensions are measured to structural elements and exclude wall finishes. Variation due to construction tolerances may apply. (2) All dimensions and drawings are provided by our consultant architects and are subject to change. (3) The actual of the unit may vary from the stated area. (4) The developer reserves the right to revise or alter any part of the development without prior notice, at its absolute discretion, and without any liability. (5) Floor plans may be mirrored depending on the unit's location within the master plan. (6) All landscaping, swimming pools and furniture shown are not included in the property and for illustrative purposes only. (7) The final orientation of each unit will be shown in the parcel layout and may differ from that shown in the floor plans.



DOUBLE HEIGHT VILLA

4 Bedrooms



| PLOT AREA    | 487.50 - 739.28 SQM | 5,247 - 7,958 SQ.FT |
|--------------|---------------------|---------------------|
| Ground Floor | 192 SQM             |                     |
| First Floor  | 162 SQM             |                     |
| Balconies    | 19 SQM              |                     |
| Total SA     | 374 SQM             | 4,026 SQ.FT         |
| TOTAL BUA    | 448 SQM             | 4,826 SQ.FT         |

Including Service Rooms & Covered Garage

(1) All room dimensions are measured to structural elements and exclude wall finishes. Variation due to construction tolerances may apply. (2) All dimensions and drawings are provided by our consultant architects and are subject to change. (3) The actual of the unit may vary from the stated area. (4) The developer reserves the right to revise or alter any part of the development without prior notice, at its absolute discretion, and without any liability. (5) Floor plans may be mirrored depending on the unit's location within the master plan. (6) All landscaping, swimming pools and furniture shown are not included in the property and for illustrative purposes only. (7) The final orientation of each unit will be shown in the parcel layout and may differ from that shown in the floor plans.



Ground Floor



First Floor



CORE VILLA

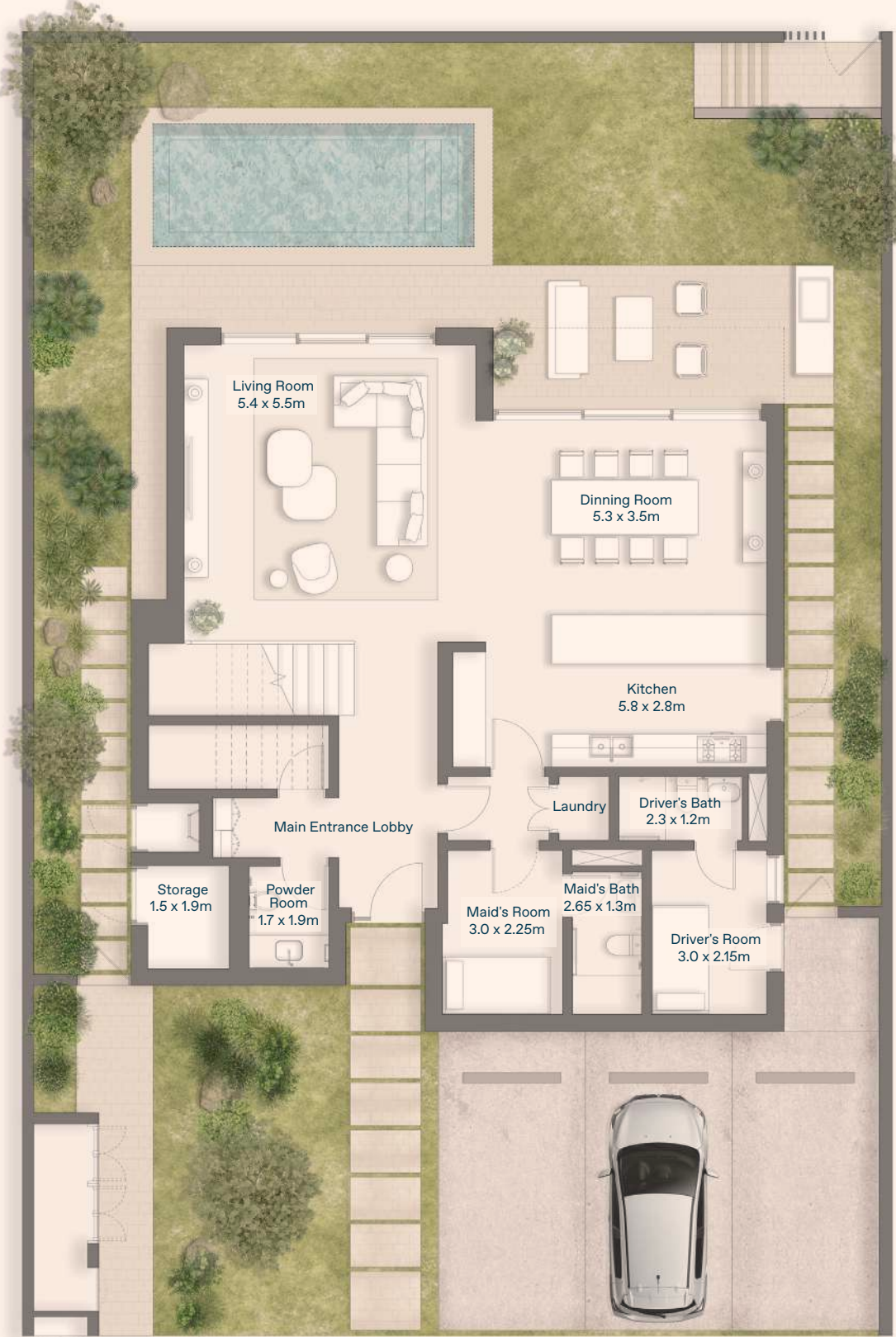
4 Bedrooms



| PLOT AREA    | 390.50 - 541.68 SQM | 4,203 - 5,830 SQ.FT |
|--------------|---------------------|---------------------|
| Ground Floor | 137 SQM             |                     |
| First Floor  | 136 SQM             |                     |
| Balconies    | 16 SQM              |                     |
| Total SA     | 289 SQM             | 3,116 SQ.FT         |
| TOTAL BUA    | 305 SQM             | 3,282 SQ.FT         |

Including Service Rooms

(1) All room dimensions are measured to structural elements and exclude wall finishes. Variation due to construction tolerances may apply. (2) All dimensions and drawings are provided by our consultant architects and are subject to change. (3) The actual of the unit may vary from the stated area. (4) The developer reserves the right to revise or alter any part of the development without prior notice, at its absolute discretion, and without any liability. (5) Floor plans may be mirrored depending on the unit's location within the master plan. (6) All landscaping, swimming pools and furniture shown are not included in the property and for illustrative purposes only. (7) The final orientation of each unit will be shown in the parcel layout and may differ from that shown in the floor plans.



Ground Floor



First Floor



CORE VILLA

3 Bedrooms



| PLOT AREA               | 385.22 - 639.42 SQM | 4,146 - 6,883 SQ.FT |
|-------------------------|---------------------|---------------------|
| Ground Floor            | 113 SQM             |                     |
| First Floor             | 102 SQM             |                     |
| Balconies               | 12 SQM              |                     |
| Total SA                | 227 SQM             | 2,441 SQ.FT         |
| TOTAL BUA               | 243 SQM             | 2,612 SQ.FT         |
| Including Service Rooms |                     |                     |



Ground Floor



First Floor

(1) All room dimensions are measured to structural elements and exclude wall finishes. Variation due to construction tolerances may apply. (2) All dimensions and drawings are provided by our consultant architects and are subject to change. (3) The actual of the unit may vary from the stated area. (4) The developer reserves the right to revise or alter any part of the development without prior notice, at its absolute discretion, and without any liability. (5) Floor plans may be mirrored depending on the unit's location within the master plan. (6) All landscaping, swimming pools and furniture shown are not included in the property and for illustrative purposes only. (7) The final orientation of each unit will be shown in the parcel layout and may differ from that shown in the floor plans.



TOWNHOMES 1C - L

4 Bedrooms

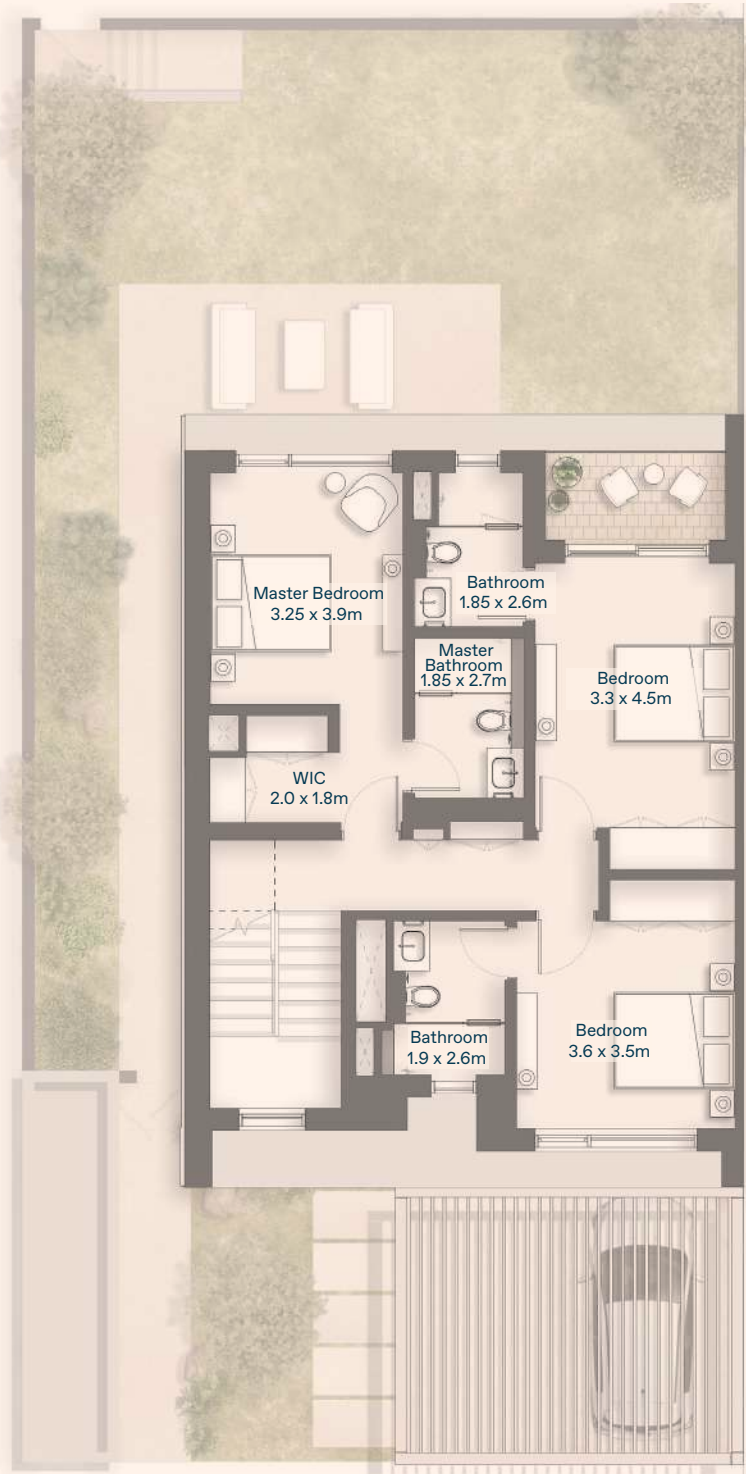


| PLOT AREA    | 288.00 - 369.90 SQM | 3,100 - 3,982 SQ.FT |
|--------------|---------------------|---------------------|
| Ground Floor | 104 SQM             |                     |
| First Floor  | 92 SQM              |                     |
| Second Floor | 38 SQM              |                     |
| Balconies    | 36 SQM              |                     |
| Total SA     | 270 SQM             | 2,905 SQ.FT         |
| TOTAL BUA    | 267 SQM             | 2,876 SQ.FT         |

Including Service Rooms



Ground Floor



First Floor



Second Floor

(1) All room dimensions are measured to structural elements and exclude wall finishes. Variation due to construction tolerances may apply. (2) All dimensions and drawings are provided by our consultant architects and are subject to change. (3) The actual of the unit may vary from the stated area. (4) The developer reserves the right to revise or alter any part of the development without prior notice, at its absolute discretion, and without any liability. (5) Floor plans may be mirrored depending on the unit's location within the master plan. (6) All landscaping, swimming pools and furniture shown are not included in the property and for illustrative purposes only. (7) The final orientation of each unit will be shown in the parcel layout and may differ from that shown in the floor plans.



TOWNHOMES 1C - R

4 Bedrooms

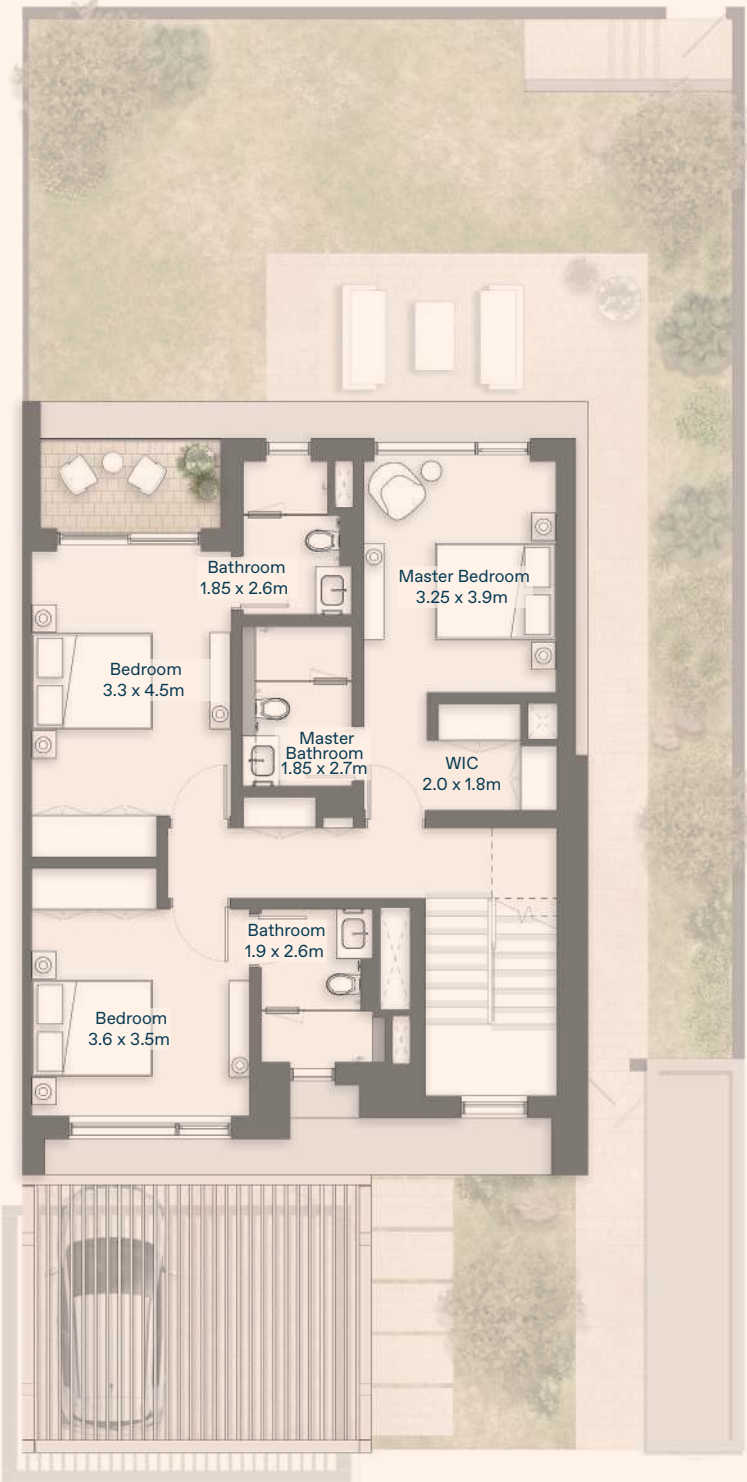


| PLOT AREA               | 288.00 - 377.84 SQM | 3,100 - 4,067 SQ.FT |
|-------------------------|---------------------|---------------------|
| Ground Floor            | 104 SQM             |                     |
| First Floor             | 92 SQM              |                     |
| Second Floor            | 38 SQM              |                     |
| Balconies               | 36 SQM              |                     |
| Total SA                | 269 SQM             | 2,899 SQ.FT         |
| TOTAL BUA               | 267 SQM             | 2,876 SQ.FT         |
| Including Service Rooms |                     |                     |

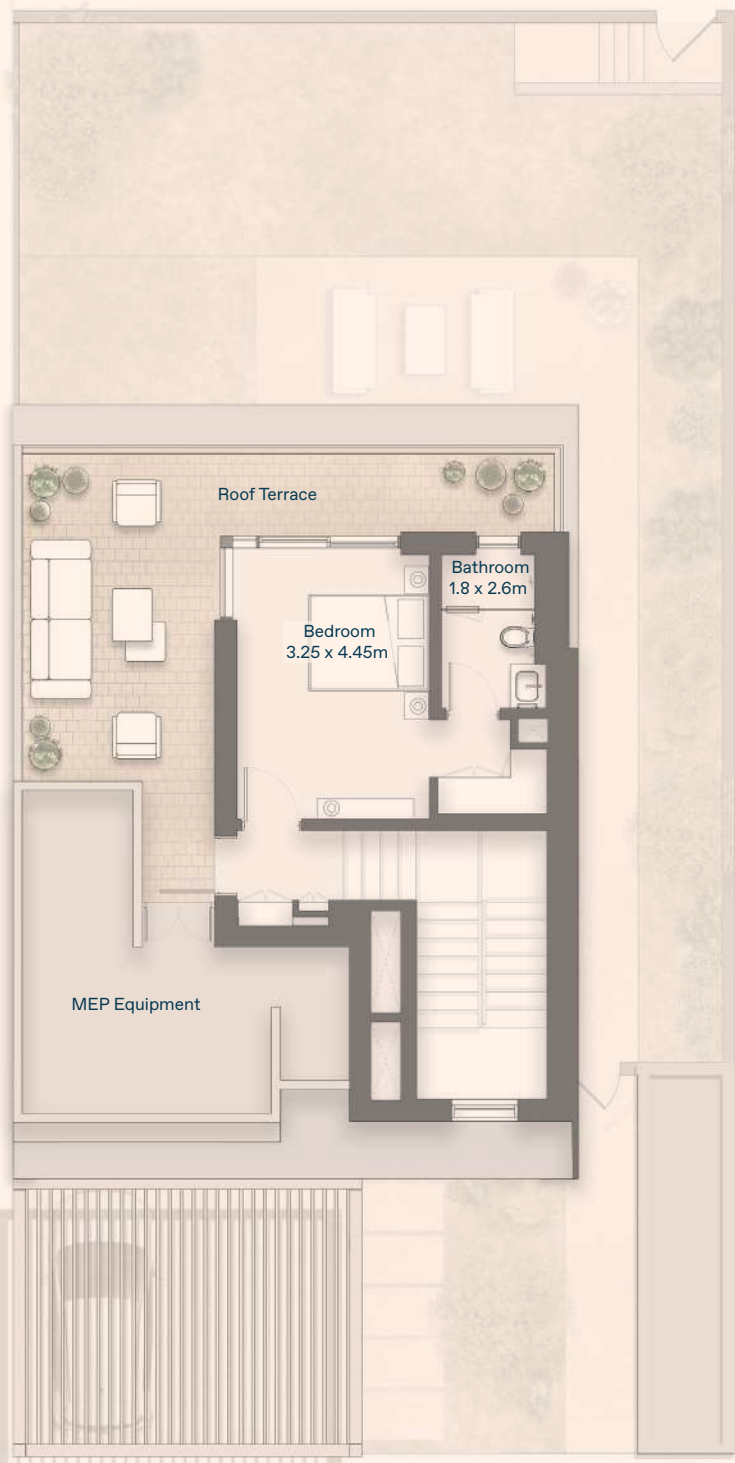
(1) All room dimensions are measured to structural elements and exclude wall finishes. Variation due to construction tolerances may apply. (2) All dimensions and drawings are provided by our consultant architects and are subject to change. (3) The actual of the unit may vary from the stated area. (4) The developer reserves the right to revise or alter any part of the development without prior notice, at its absolute discretion, and without any liability. (5) Floor plans may be mirrored depending on the unit's location within the master plan. (6) All landscaping, swimming pools and furniture shown are not included in the property and for illustrative purposes only. (7) The final orientation of each unit will be shown in the parcel layout and may differ from that shown in the floor plans.



Ground Floor



First Floor



Second Floor



TOWNHOMES 1M - R

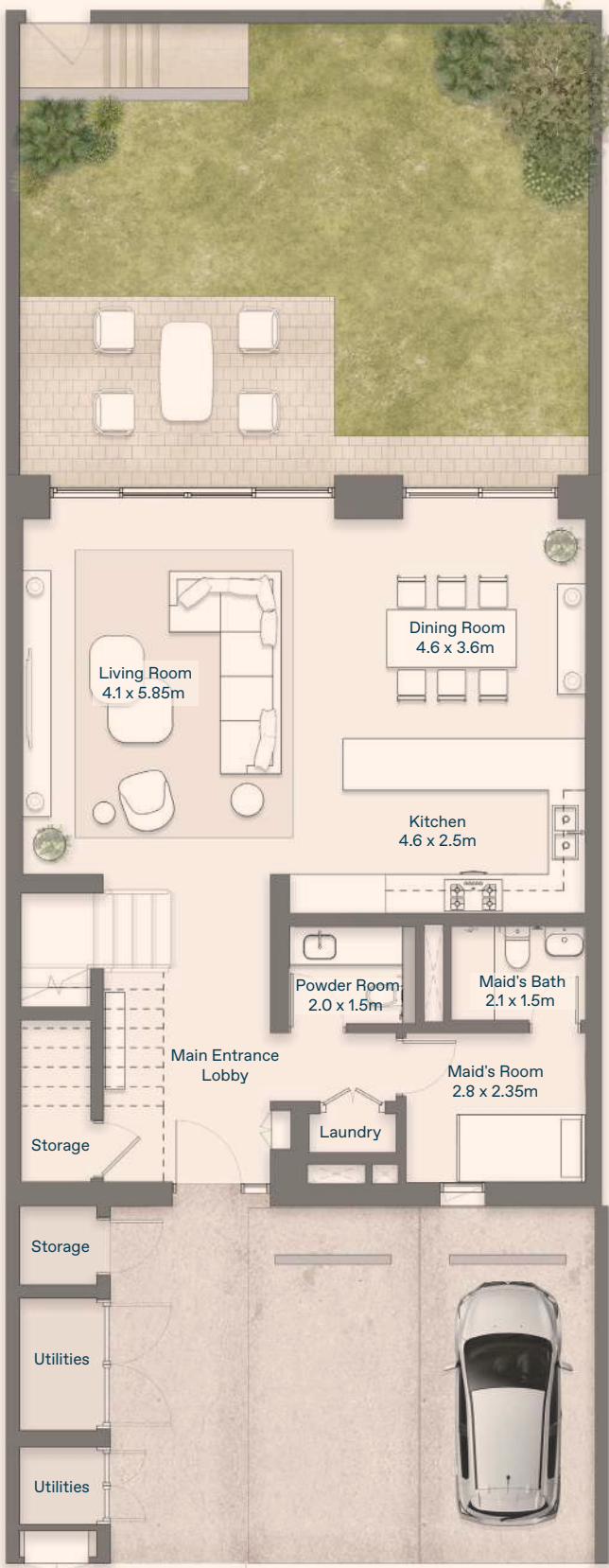
3 Bedrooms



| PLOT AREA    | 216.00 -227.57 SQM | 2,325 - 2,450 SQ.ST |
|--------------|--------------------|---------------------|
| Ground Floor | 102 SQM            |                     |
| First Floor  | 89 SQM             |                     |
| Second Floor | 0 SQM              |                     |
| Balconies    | 5 SQM              |                     |
| Total SA     | 195 SQM            | 2,104 SQ.FT         |
| TOTAL BUA    | 211 SQM            | 2,271 SQ.FT         |

Including Service Rooms

(1) All room dimensions are measured to structural elements and exclude wall finishes. Variation due to construction tolerances may apply. (2) All dimensions and drawings are provided by our consultant architects and are subject to change. (3) The actual of the unit may vary from the stated area. (4) The developer reserves the right to revise or alter any part of the development without prior notice, at its absolute discretion, and without any liability. (5) Floor plans may be mirrored depending on the unit's location within the master plan. (6) All landscaping, swimming pools and furniture shown are not included in the property and for illustrative purposes only. (7) The final orientation of each unit will be shown in the parcel layout and may differ from that shown in the floor plans.



Ground Floor



First Floor



TOWNHOMES 1M - L

3 Bedrooms



| PLOT AREA               | 216.00 -226.38 SQM | 2,325 - 3,437 SQ.FT |
|-------------------------|--------------------|---------------------|
| Ground Floor            | 102 SQM            |                     |
| First Floor             | 89 SQM             |                     |
| Second Floor            | 0 SQM              |                     |
| Balconies               | 5 SQM              |                     |
| Total SA                | 195 SQM            | 2,104 SQ.FT         |
| TOTAL BUA               | 211 SQM            | 2,271 SQ.FT         |
| Including Service Rooms |                    |                     |

(1) All room dimensions are measured to structural elements and exclude wall finishes. Variation due to construction tolerances may apply. (2) All dimensions and drawings are provided by our consultant architects and are subject to change. (3) The actual of the unit may vary from the stated area. (4) The developer reserves the right to revise or alter any part of the development without prior notice, at its absolute discretion, and without any liability. (5) Floor plans may be mirrored depending on the unit's location within the master plan. (6) All landscaping, swimming pools and furniture shown are not included in the property and for illustrative purposes only. (7) The final orientation of each unit will be shown in the parcel layout and may differ from that shown in the floor plans.



Ground Floor

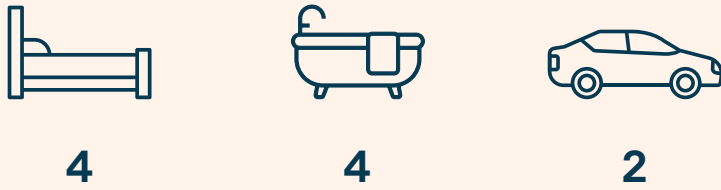


First Floor



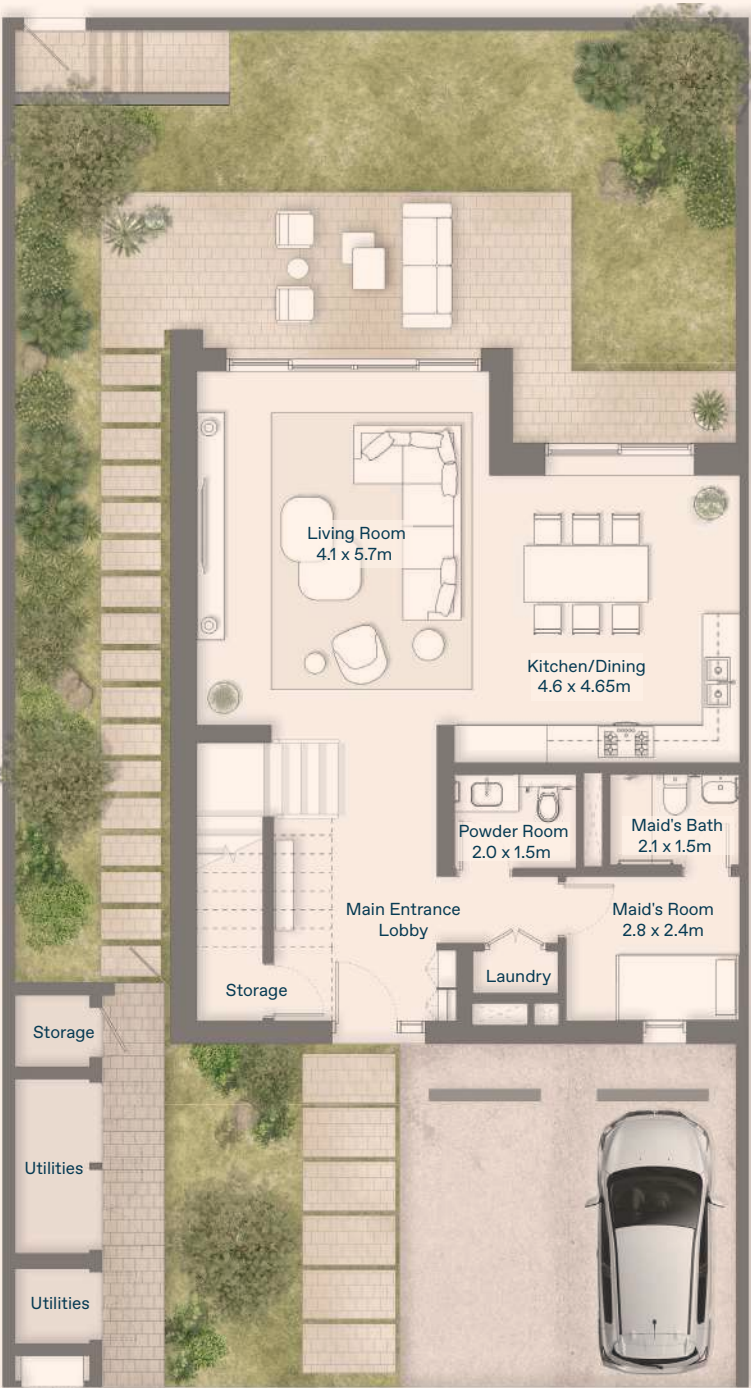
TOWNHOMES 2C - L

4 Bedrooms

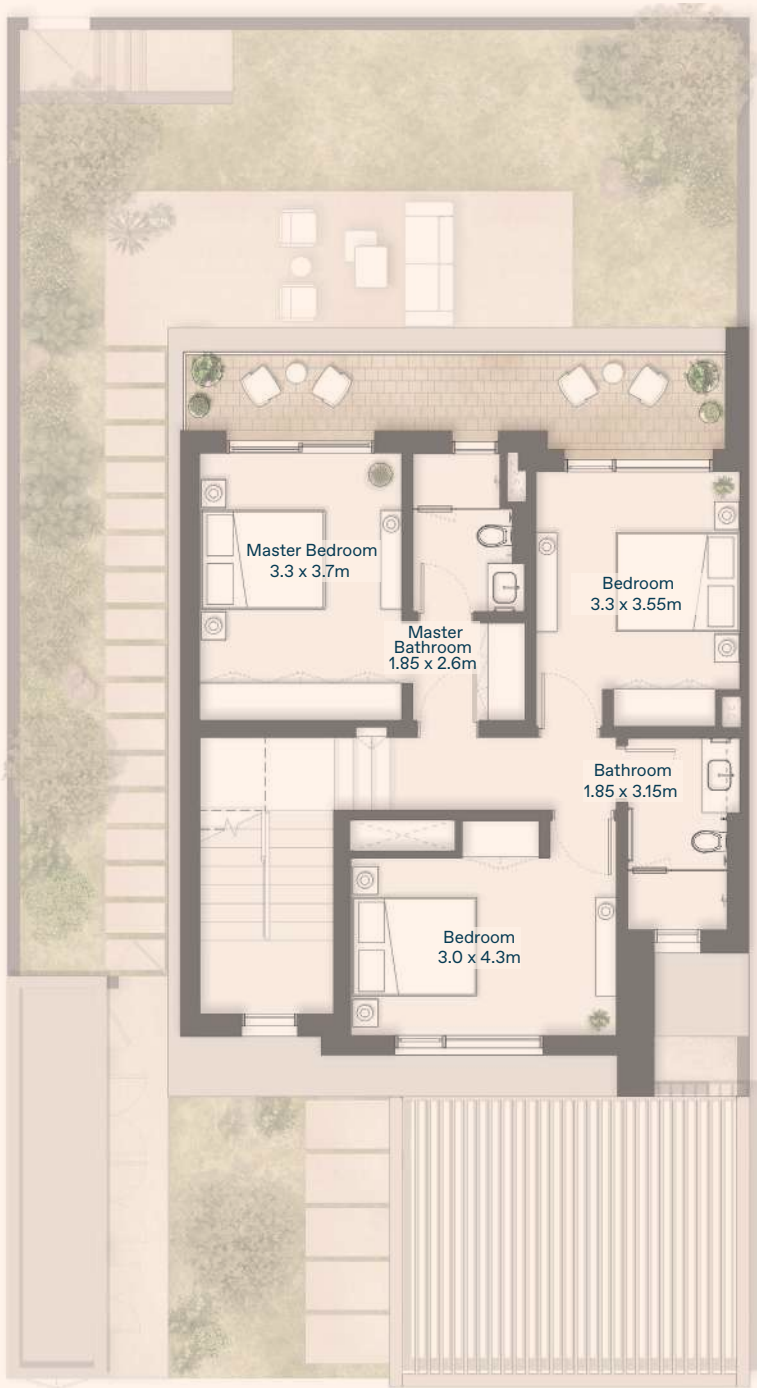


| PLOT AREA    | 288.00 - 352.39 SQM | 3,100 - 3,793 SQ.FT |
|--------------|---------------------|---------------------|
| Ground Floor | 98 SQM              |                     |
| First Floor  | 80 SQM              |                     |
| Second Floor | 38 SQM              |                     |
| Balconies    | 30 SQM              |                     |
| Total SA     | 247 SQM             | 2,654 SQ.FT         |
| TOTAL BUA    | 258 SQM             | 2,780 SQ.FT         |

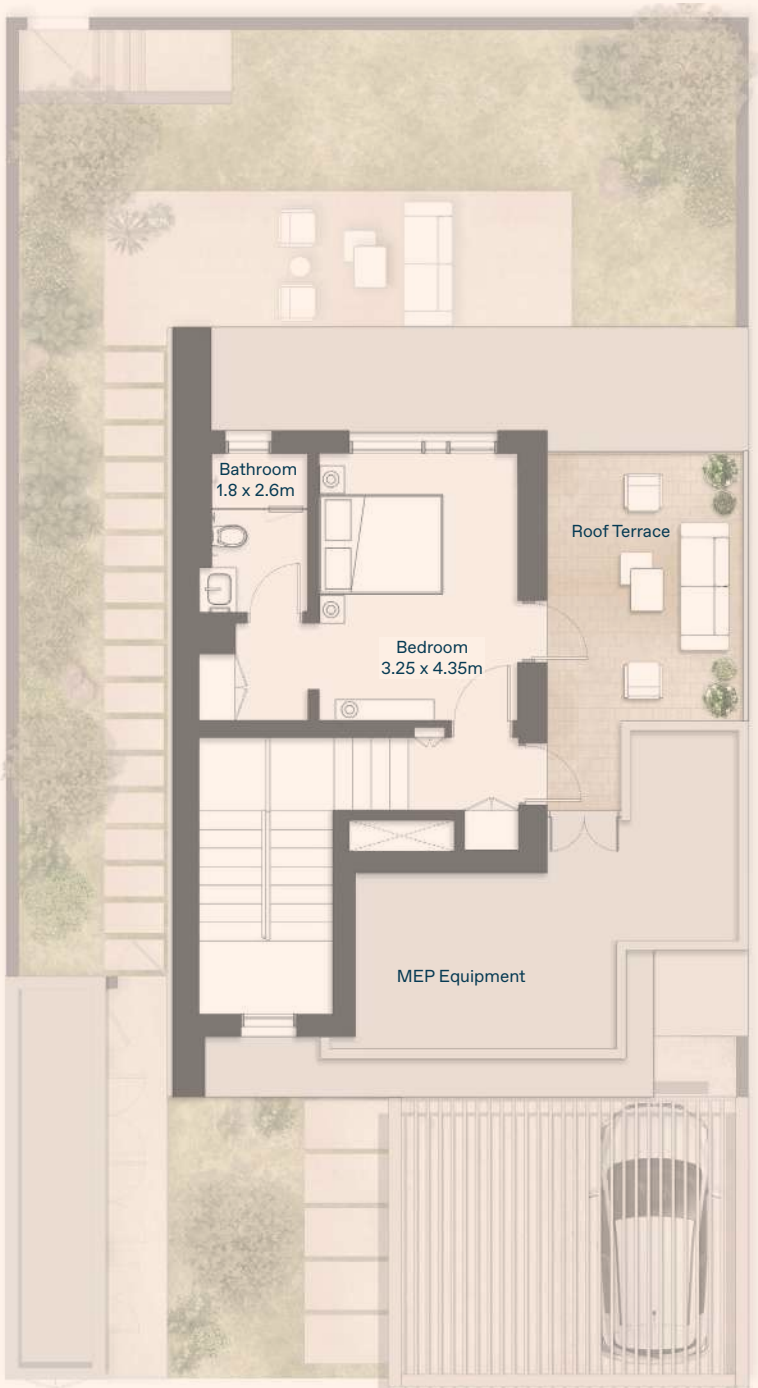
Including Service Rooms



Ground Floor



First Floor



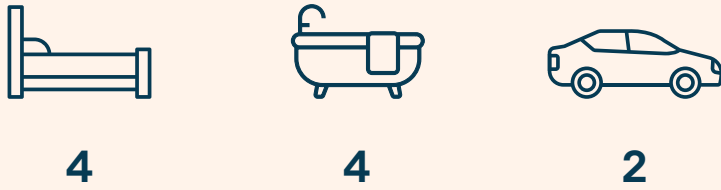
Second Floor

(1) All room dimensions are measured to structural elements and exclude wall finishes. Variation due to construction tolerances may apply. (2) All dimensions and drawings are provided by our consultant architects and are subject to change. (3) The actual of the unit may vary from the stated area. (4) The developer reserves the right to revise or alter any part of the development without prior notice, at its absolute discretion, and without any liability. (5) Floor plans may be mirrored depending on the unit's location within the master plan. (6) All landscaping, swimming pools and furniture shown are not included in the property and for illustrative purposes only. (7) The final orientation of each unit will be shown in the parcel layout and may differ from that shown in the floor plans.



TOWNHOMES 2C - R

4 Bedrooms



| PLOT AREA    | 288.00 - 388.03 SQM | 3,100 - 4,177 SQ.FT |
|--------------|---------------------|---------------------|
| Ground Floor | 97 SQM              |                     |
| First Floor  | 81 SQM              |                     |
| Second Floor | 37 SQM              |                     |
| Balconies    | 30 SQM              |                     |
| Total SA     | 245 SQM             | 2,636 SQ.FT         |
| TOTAL BUA    | 257 SQM             | 2,769 SQ.FT         |

Including Service Rooms



Ground Floor

First Floor

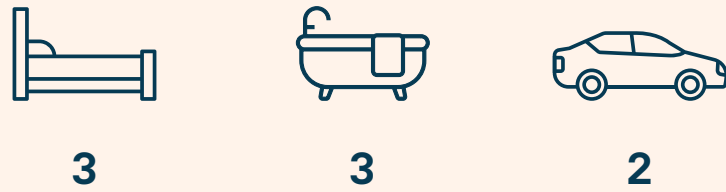
Second Floor

(1) All room dimensions are measured to structural elements and exclude wall finishes. Variation due to construction tolerances may apply. (2) All dimensions and drawings are provided by our consultant architects and are subject to change. (3) The actual of the unit may vary from the stated area. (4) The developer reserves the right to revise or alter any part of the development without prior notice, at its absolute discretion, and without any liability. (5) Floor plans may be mirrored depending on the unit's location within the master plan. (6) All landscaping, swimming pools and furniture shown are not included in the property and for illustrative purposes only. (7) The final orientation of each unit will be shown in the parcel layout and may differ from that shown in the floor plans.



TOWNHOMES 2M - R

3 Bedrooms



| PLOT AREA    | 198.00 - 216.82 SQM | 2,131 - 2,334 SQ.FT |
|--------------|---------------------|---------------------|
| Ground Floor | 87 SQM              |                     |
| First Floor  | 77 SQM              |                     |
| Second Floor | 0 SQM               |                     |
| Balconies    | 0 SQM               |                     |
| Total SA     | 164 SQM             | 1,766 SQ.FT         |
| TOTAL BUA    | 181 SQM             | 1,945 SQ.FT         |

Including Service Rooms

(1) All room dimensions are measured to structural elements and exclude wall finishes. Variation due to construction tolerances may apply. (2) All dimensions and drawings are provided by our consultant architects and are subject to change. (3) The actual of the unit may vary from the stated area. (4) The developer reserves the right to revise or alter any part of the development without prior notice, at its absolute discretion, and without any liability. (5) Floor plans may be mirrored depending on the unit's location within the master plan. (6) All landscaping, swimming pools and furniture shown are not included in the property and for illustrative purposes only. (7) The final orientation of each unit will be shown in the parcel layout and may differ from that shown in the floor plans.



Ground Floor

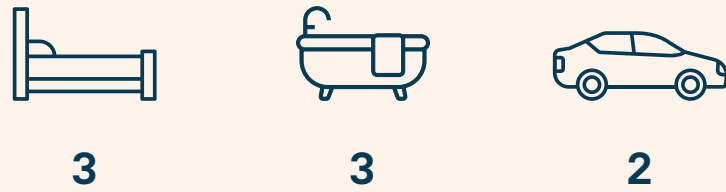


First Floor



TOWNHOMES 2M - L

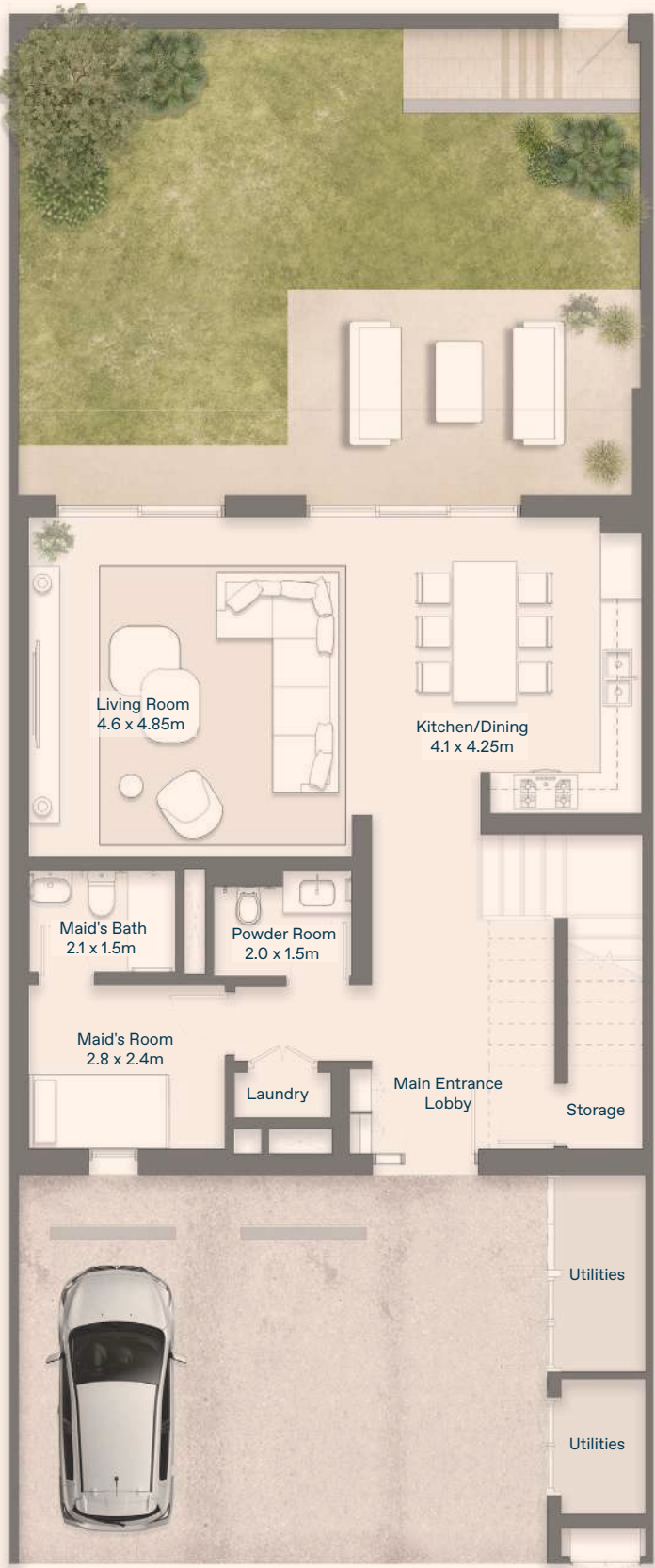
3 Bedrooms



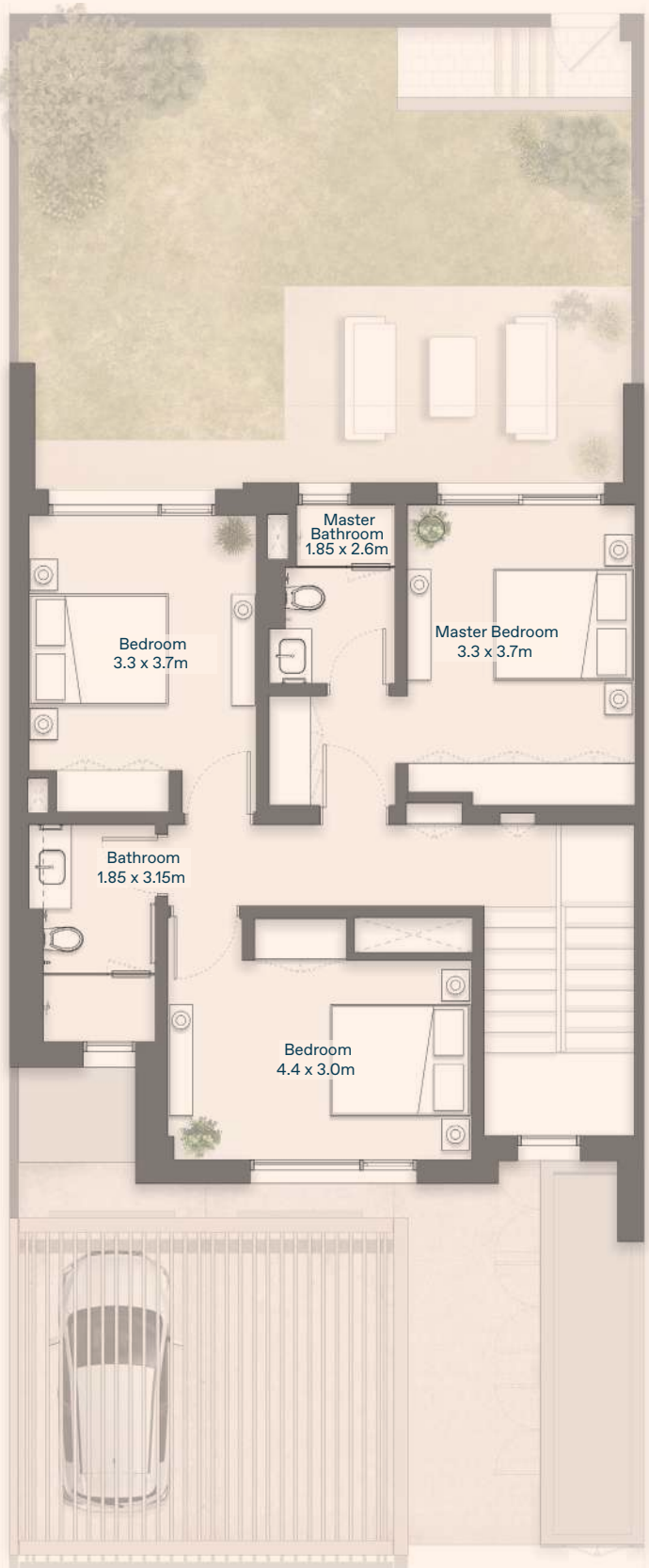
| PLOT AREA    | 198.00 - 213.09 SQM | 2,131 - 2,294 SQ.FT |
|--------------|---------------------|---------------------|
| Ground Floor | 87 SQM              |                     |
| First Floor  | 77 SQM              |                     |
| Second Floor | 0 SQM               |                     |
| Balconies    | 0 SQM               |                     |
| Total SA     | 164 SQM             | 1,766 SQ.FT         |
| TOTAL BUA    | 180 SQM             | 1,943 SQ.FT         |

Including Service Rooms

(1) All room dimensions are measured to structural elements and exclude wall finishes. Variation due to construction tolerances may apply. (2) All dimensions and drawings are provided by our consultant architects and are subject to change. (3) The actual of the unit may vary from the stated area. (4) The developer reserves the right to revise or alter any part of the development without prior notice, at its absolute discretion, and without any liability. (5) Floor plans may be mirrored depending on the unit's location within the master plan. (6) All landscaping, swimming pools and furniture shown are not included in the property and for illustrative purposes only. (7) The final orientation of each unit will be shown in the parcel layout and may differ from that shown in the floor plans.



Ground Floor



First Floor