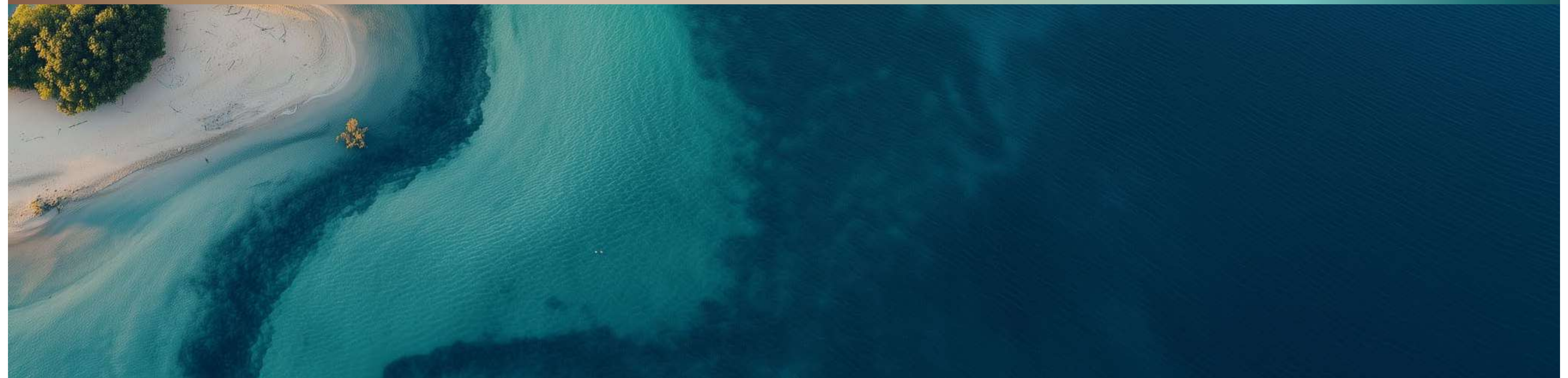




TRIO ISLE | INTERIORS BY
MISSONI





Durar is one of the leading property development groups, offering a wide range of world-class solutions. Flexibility in planning and development ensures each client receives a strategic and highly personalized solution.

Among its celebrated projects is Elie Saab Edition Jasmine Lane at Jumeirah Golf Estate, which is a statement of luxury living and the J-One project in Business Bay.



ELIE SAAB

Edition

Jasmine Lane

An exclusive residential masterpiece at Jumeirah Golf Estates, Jasmine Lane by Durar Group redefines luxury living with elegant design and world-class amenities.





OCTA Developments came from a legacy of excellence, integrity, and innovation built by OCTA Properties. A foundation of delivering high-quality and functional living spaces has evolved into a commitment to creating purpose-driven, premium developments.

OCTA Developments works under the motto Life². More than just a concept, it's the philosophy of redefining modern living by enhancing every detail, amplifying quality, and transforming the ordinary into the extraordinary.

Every space designed is crafted with intent, where functionality is heightened, efficiency is escalated, and excellence is magnified. Through practical planning and uncompromising quality.

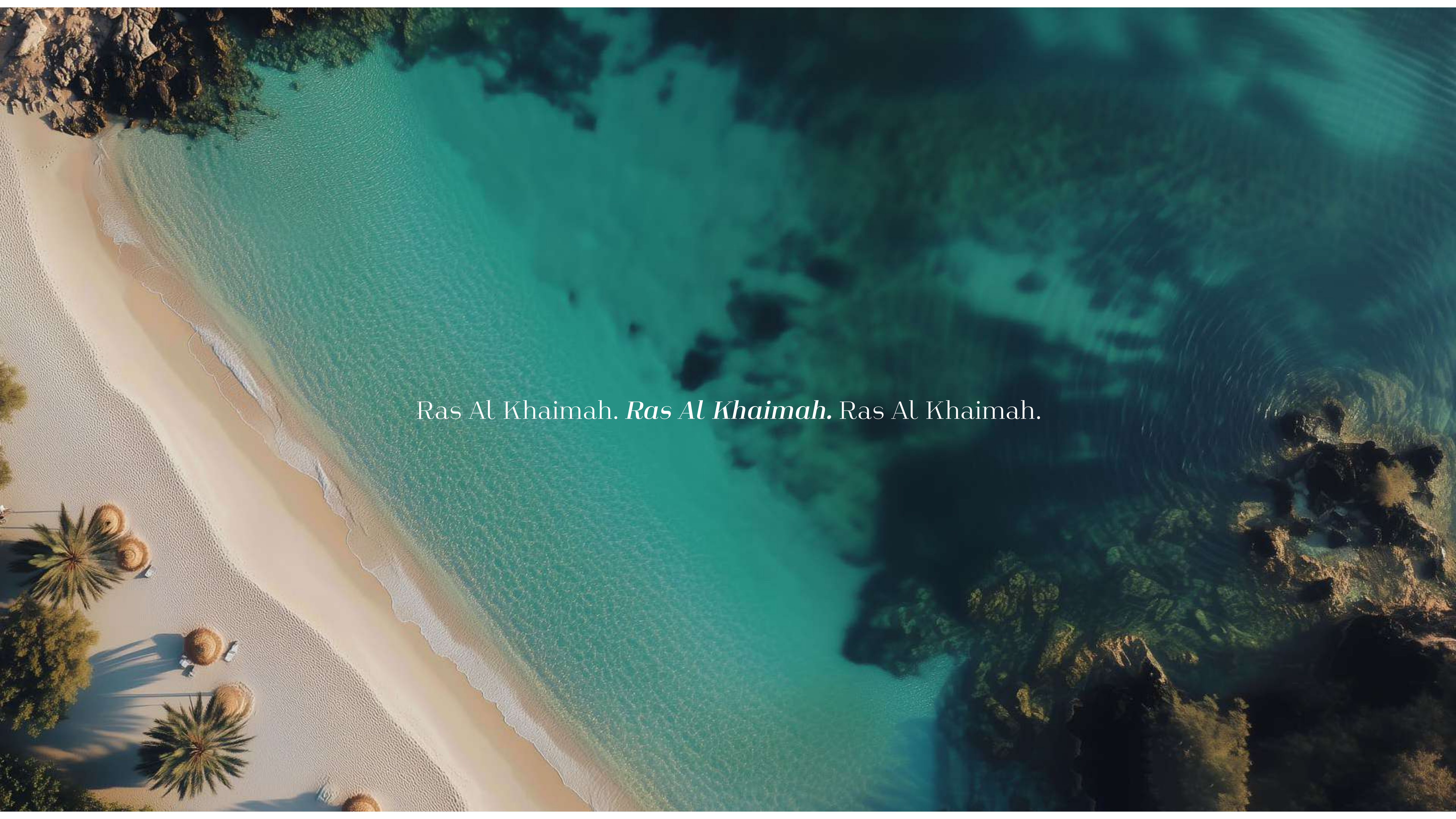
OCTA Developments does not develop properties; it creates spaces where life truly flourishes.



Where *three* worlds of luxury come together.

A woman stands on a sandy beach, her back to the camera, looking out at the ocean. The water is a deep teal color with intricate, swirling patterns of white and gold, resembling marbled paper or a topographical map. The woman's shadow is cast long and dark on the sand. The text "Location. *Location.* Location." is centered over the image.

Location. *Location.* Location.

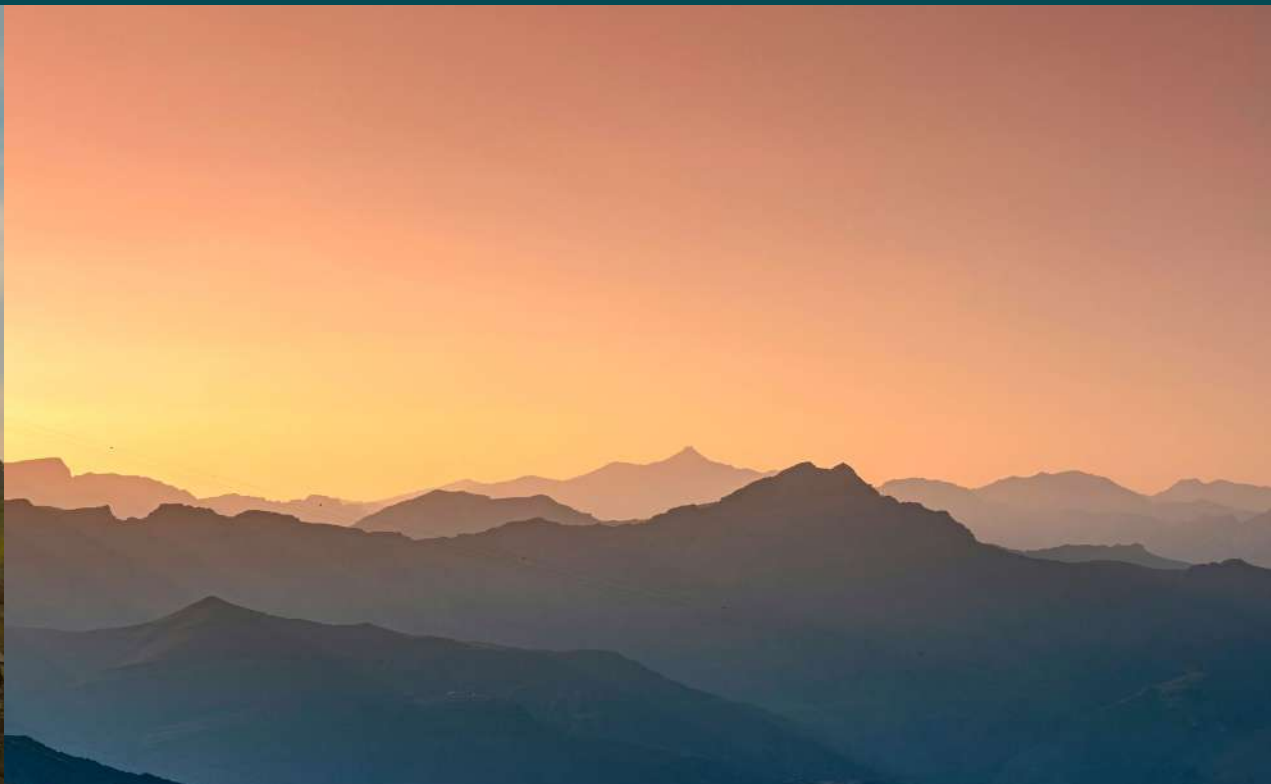


Ras Al Khaimah. *Ras Al Khaimah.* Ras Al Khaimah.



CULTURE

- Archeological findings dating back to 5,000 BC
- Area continuously inhabited for 7,000 years, 18 historic forts, castles, and towers.
- Offers unique perspective of UAE and RAK heritage



MOUNTAINS

- Jebel Jais, the UAE's tallest mountain at 1,900 meters
- Offers views of the coastline and valleys
- Up to 20-degree temperature differential to the coastline
- Offers hiking, rock-climbing, off-road trails and longest zipline in the world



DESERTS

- One of the UAE's most accessible pristine deserts
- Easily accessible from both the beach and the mountains
- Unique fauna and flora and dedicated nature reserves
- Offers off-roading, camping and safari experience



COASTLINE

- 43 kilometers of pristine coastline
- Golden-sand beaches and crystal-clear waters
- Natural mangroves
- Offers water sport activities

Nestled between the Hajar Mountains and the Arabian Gulf, it boasts a diverse landscape that includes stunning mountains, pristine beaches, and desert expanses.

Ras Al Khaimah is known for its rich cultural heritage and modern amenities, including luxury resorts, making it a popular destination for both tourists and expatriates seeking a unique blend of tradition and progress in the heart of the United Arab Emirates.

29.7%

YoY increase in total revenues earned by hospitality establishments in 2022 (316 million USD) amounting to 127 USD per available room.

3.53m

Number of guest nights spent in RAK in 2022. This represents a 27% YoY growth from 2021 figures.

56%

Market share held by domestic visitors in RAK in 2022, a slight drop from 2021 figures of 58%, pointing towards increased appeal to inbound visitors.

Location Map



60 Minutes To Airport Via Sheikh Mohammed Bin Zayed Road

TRIO ISLE

INTERIORS BY
MISSONI

Wynn Al Marjan

Al Marjan Island

Located at the tip of the UAE, Ras Al Khaimah enjoys a strategic location only 60 minutes from Dubai International Airport.

4

Islands

6

Fully Operational
World-Class Hotels

7.8

Km of Prestine
Beaches

2.7

Million Sqm of
Reclaimed Land

Island Map
Projects

- 1. Trio Isle Interiors By Missoni
- 2. Moonstone Interiors By Missoni
- 3. La Mer By Elie Saab
- 4. Wynn Al Marjan

TRIO ISLE | INTERIORS BY
MISSONI





5 min away
Wynn Al Marjan

The background is a full-page image of marbled paper. It features a complex, organic pattern of swirling, wavy lines in various shades of teal, turquoise, and deep blue, interspersed with veins and patches of gold, tan, and brown. The overall effect is reminiscent of natural stone or liquid pigments mixed together.

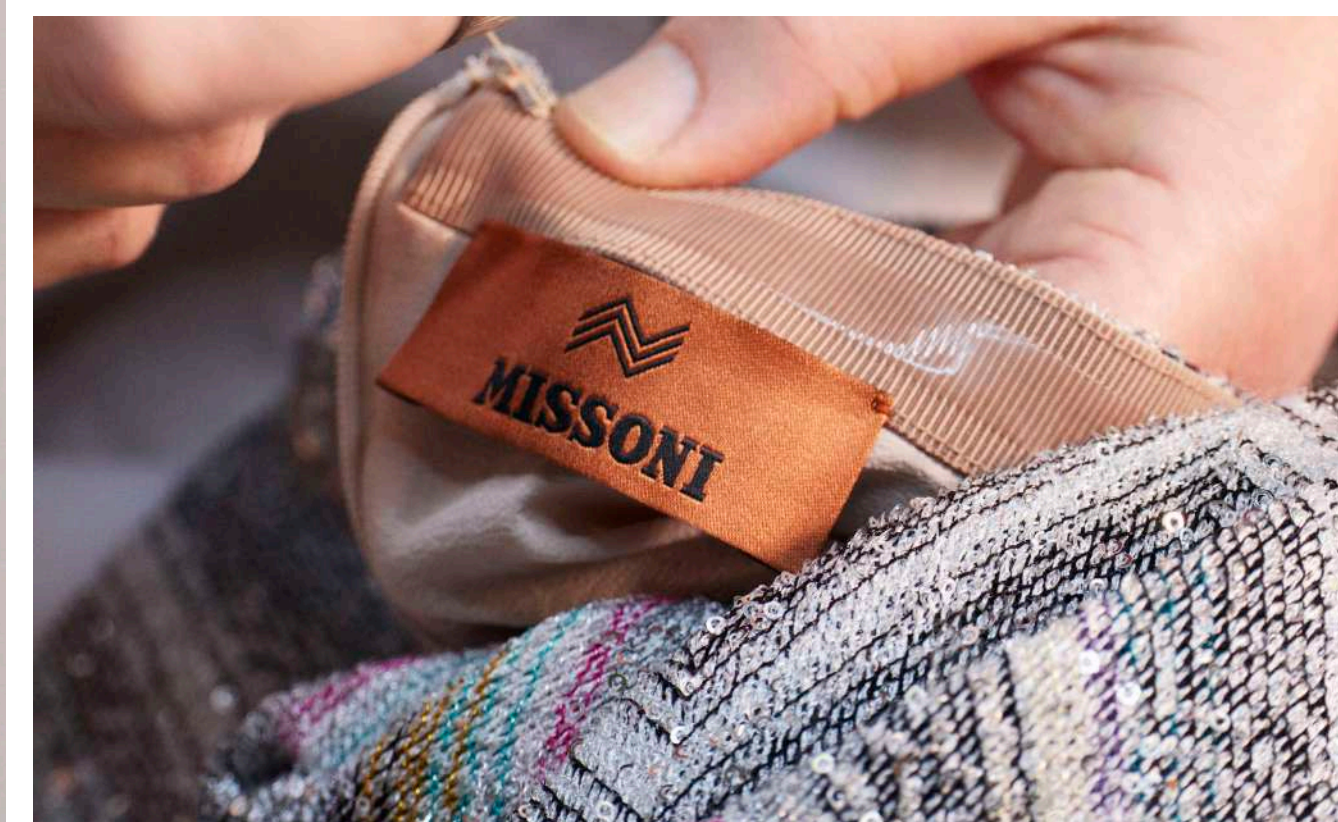
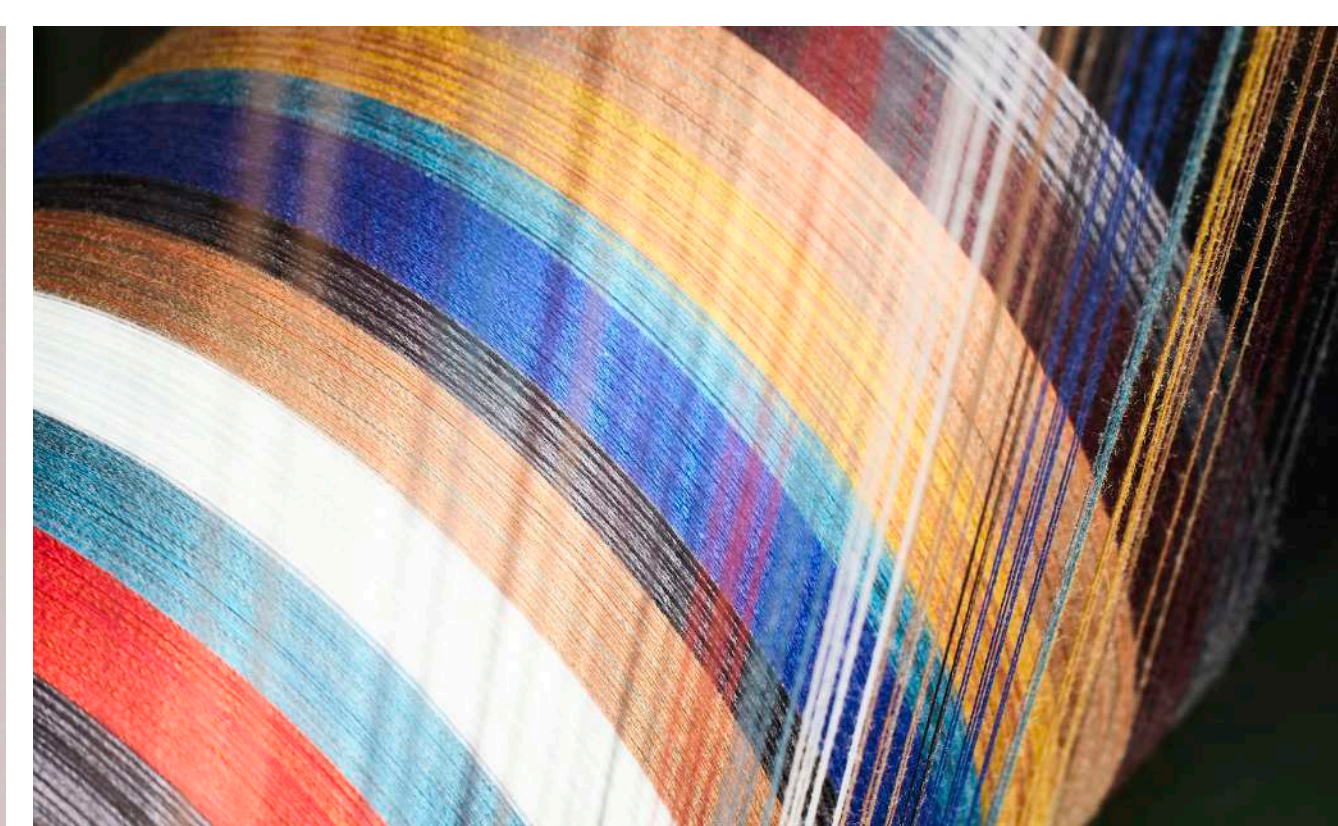
Brand. *Brand.* Brand.

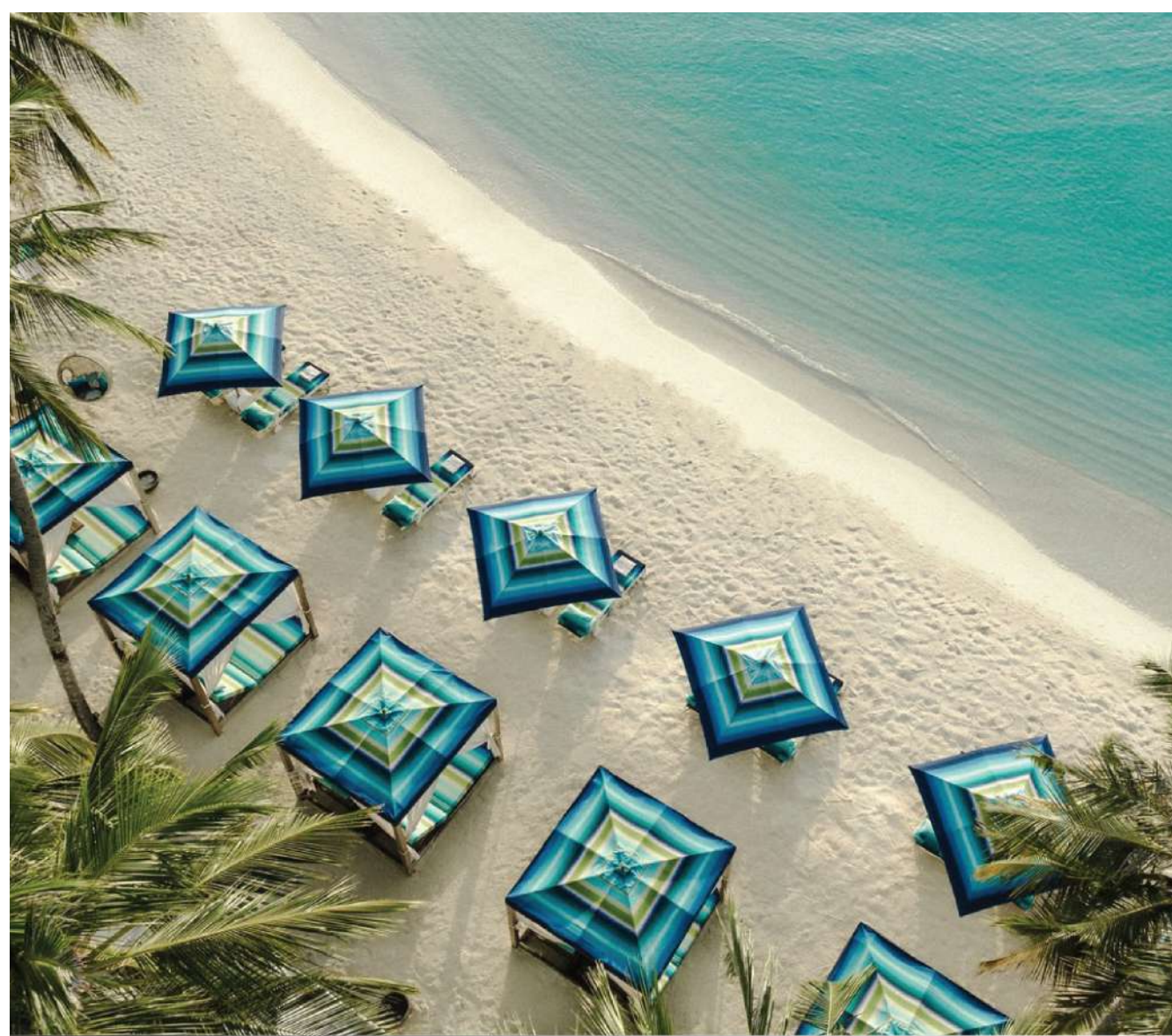
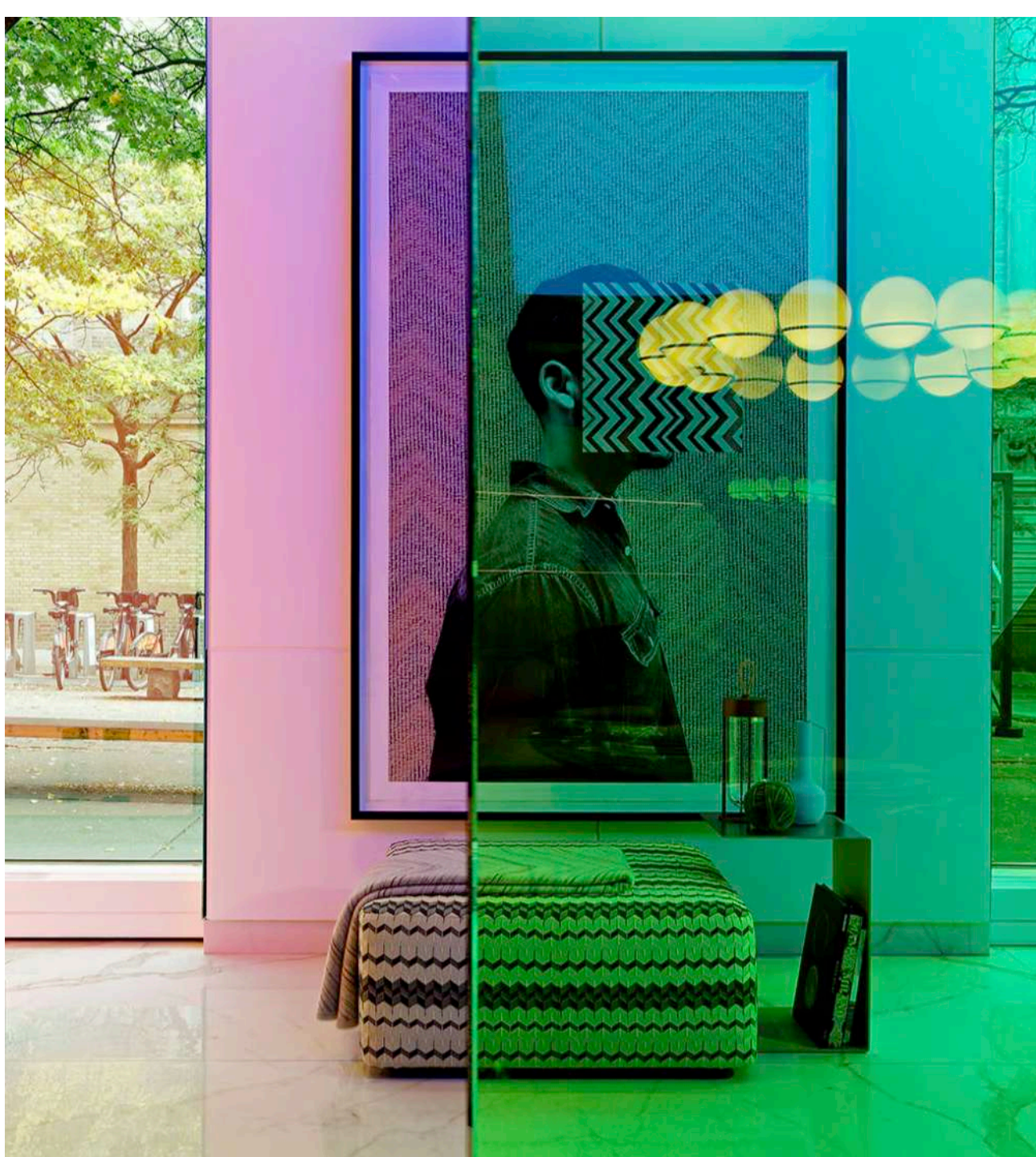




Missoni is an iconic Italian luxury fashion house, renowned for its vibrant knitwear and bold geometric patterns. By the 1970s, it had redefined knitwear with a signature aesthetic blending art, fashion, and a distinctly Italian sensibility.

Beyond clothing, Missoni expanded into accessories, home furnishings, and fragrances, embracing a holistic vision of style. With a legacy of heritage and creativity, it represents an unmistakably Italian way of living and dressing that continues to captivate fashion lovers across generations.





MISSONI

REAL ESTATE PROJECTS



MIAMI



DUBAI



MARBELLA



SAO PAULO



BORDRUM



TORONTO



AL MARJAN ISLAND, RAK



AL MARJAN ISLAND, RAK

TRIO ISLE | INTERIORS BY
MISSONI

Discover the power of *three*.



The Story

Trio Isle features three stunning buildings, each offering world-class design and impeccable finishes. With three levels of exceptional amenities, ***Trio Isle*** creates a harmonious blend of luxury and comfort.

Residents will enjoy a unique blend of experiences, from the serene beach to the refreshing pool and lush garden, all designed to elevate your lifestyle to new heights.

Trio Isle is where elegance meets innovation, making it the perfect destination for those seeking the ultimate in coastal living.



All images used are for illustrative purposes only and do not represent the actual size, features, specifications, fittings and furnishings. The developer reserves the right to make revisions / alterations, at its absolute discretion, without any liability whatsoever.

Plot Location Map

TRIO ISLE | INTERIORS BY **MISSONI**

800ft (240M)
Waterfront



All images used are for illustrative purposes only and do not represent the actual size, features, specifications, fittings and furnishings. The developer reserves the right to make revisions / alterations, at its absolute discretion, without any liability whatsoever.



A full-page background image showing three women walking away from the camera on a sandy beach. They are wearing light-colored, short-sleeved dresses. The sun is low on the horizon to the left, casting long, dark shadows of the women onto the sand. The ocean is to the right, with white foam from a wave washing onto the shore. The water has a vibrant turquoise color. The overall mood is serene and luxurious.

Triple the luxury, *triple* the experience.

The background is a full-page image of a marbled pattern. It features swirling, organic shapes in various shades of teal, emerald green, and deep blue, interspersed with veins and patches of a warm, golden-brown or tan color. The overall effect is reminiscent of natural stone or liquid paint mixing.

World-class designed *three* exteriors.

Isle C

Isle B

Isle A



Project
Details

Project Name	Trio Isle				
Developer	DURAR OCTA FZ LLC				
Branded	MISSONI				
Architect	QHC Architects and Engineers				
Location	Al Marjan Island, Ras Al Khaimah				
Aniticipated Completion Date	Q4 2027				
Aniticipated Service Charges	AED 18 per Sqft				
Furnished	No				
Brand of White Goods	Bosch or Equivalent				
Height	B + G +2P +12				
Ceiling Height	4.2 m				
Elevators	Isle A & C (3 Residential, 1 Service)				
	Isle B (4 Residential, 1 Service)				
Parking Per Unit	1 Parking: STD, 1BR, 2BR 2 Parkings: 3BR				
Unit Mix	1BR	2BR	3BR	RETAIL	TOTAL
Isle A	72	79	13	2	166

A perfect *trio* of restaurants, amenities, and experiences await.

An aerial photograph of a tropical resort. The scene features a curved, light-colored sandy beach on the left, bordered by clear, turquoise water. To the right of the beach is a dense area of lush greenery, including numerous palm trees and other tropical plants. Several small, thatched-roof buildings are nestled within this greenery. A winding path or road is visible through the trees. The overall atmosphere is serene and idyllic, typical of a high-end vacation destination.

Amenities. *Amenities.* Amenities.

25+ *Amenities*

Lobby



All images used are for illustrative purposes only and do not represent the actual size, features, specifications, fittings and furnishings.
The developer reserves the right to make revisions / alterations, at its absolute discretion, without any liability whatsoever.

Where every entrance is a *Missoni* moment.

Amenities Walkthrough - Ground Level



Swimming Pool

Seating Pods

Pool Bar & Dining

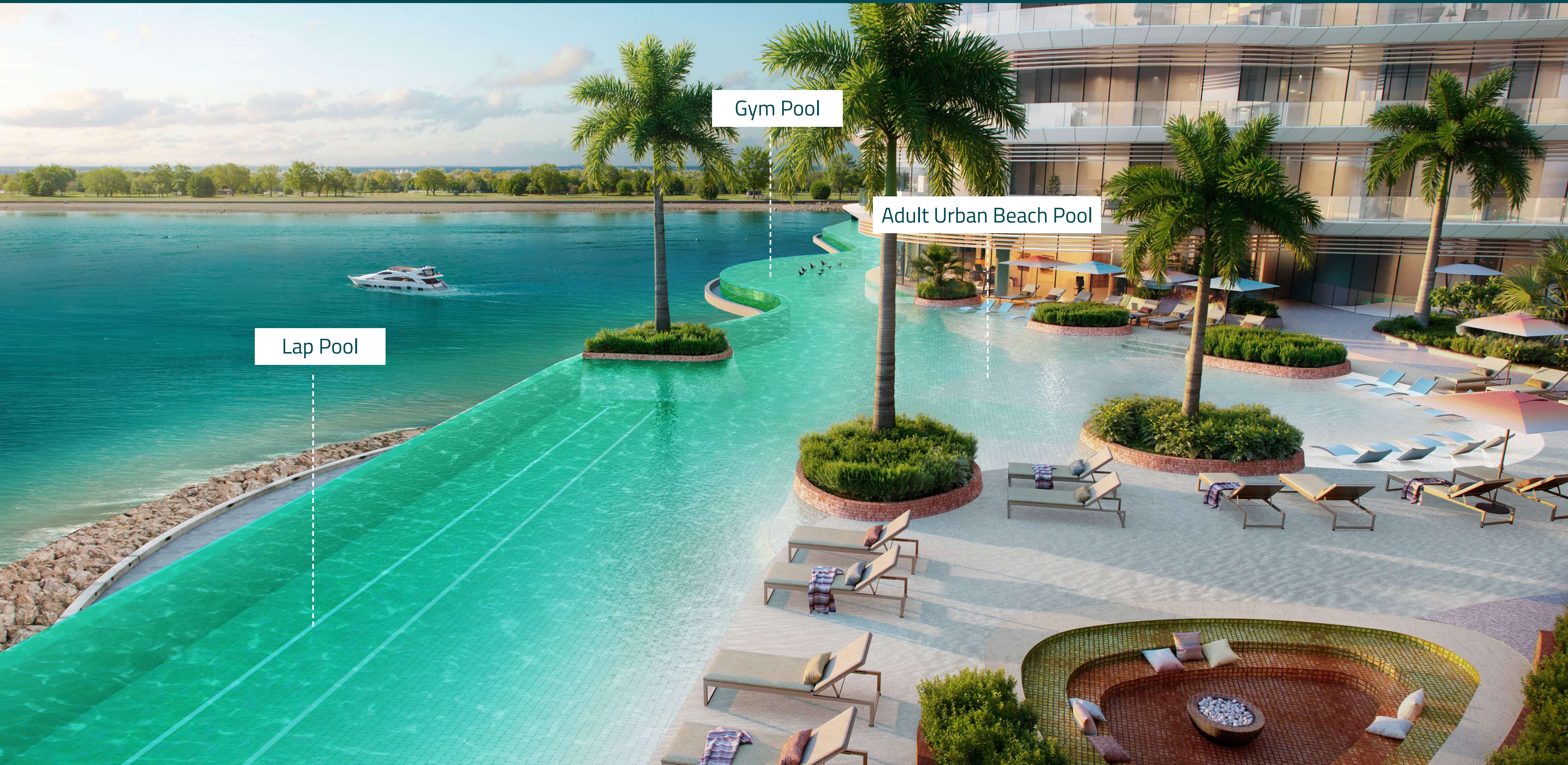
View Point

Public Promenade

Fire Pit



Amenities Walkthrough - First Level



Lap Pool

Gym Pool

Adult Urban Beach Pool

Amenities Walkthrough - First Level



Amenities Walkthrough - First Level



BBQ & Social Area

Salt Water Pool

Kids Pool

Chill Area

Kids Play Area



Floor Plans. *Floor Plans.* Floor Plans.

Building Configuration





Unit Layouts. *Unit Layouts.* Unit Layouts.



Interiors. *Interiors.* Interiors.

Living Room



All images used are for illustrative purposes only and do not represent the actual size, features, specifications, fittings and furnishings. The developer reserves the right to make revisions / alterations, at its absolute discretion, without any liability whatsoever.

Kitchen



Dining



All images used are for illustrative purposes only and do not represent the actual size, features, specifications, fittings and furnishings. The developer reserves the right to make revisions / alterations, at its absolute discretion, without any liability whatsoever.

Master Bedroom



Master Bathroom



Reasons to
Invest



Prime Location
for Luxury Living



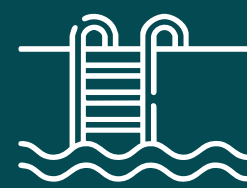
Architectural
Excellence



Unmatched
Holiday Living



Mesmerizing Sunrise
& Sunset Views



Integrated
Amenities



Ras Al Khaimah's
Waterfront Marvels

Starting Sizes
and Prices

Unit Type	Starting Size (Sq.ft.)	Starting Price (AED)
1BR	652	1,600,888
2BR	971	2,250,888
3BR	2,148	5,350,888

68% / 32%

3 Years Post Handover

Anticipated Completion Date

Q4 2027

Discount

Advanced Down Payment	Discount %
30% on Booking	2%
40% on Booking	3%
50% on Booking	4%
No PHPP	3%

Bulk Deal	Discount %
10 to 15 Million	3%
15 Million and above	5%