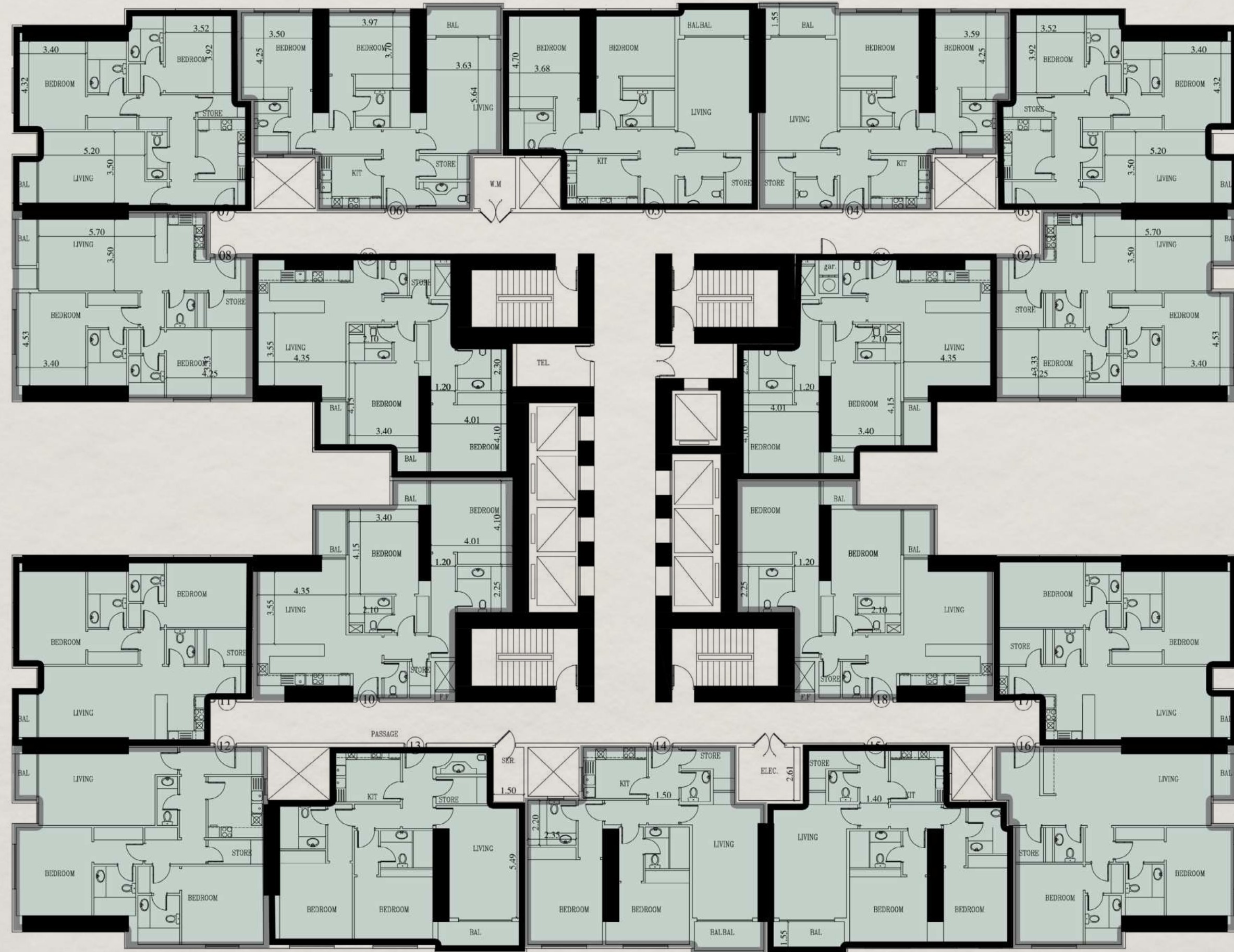


FLOOR PLAN



Mohd Bin Zayed Road

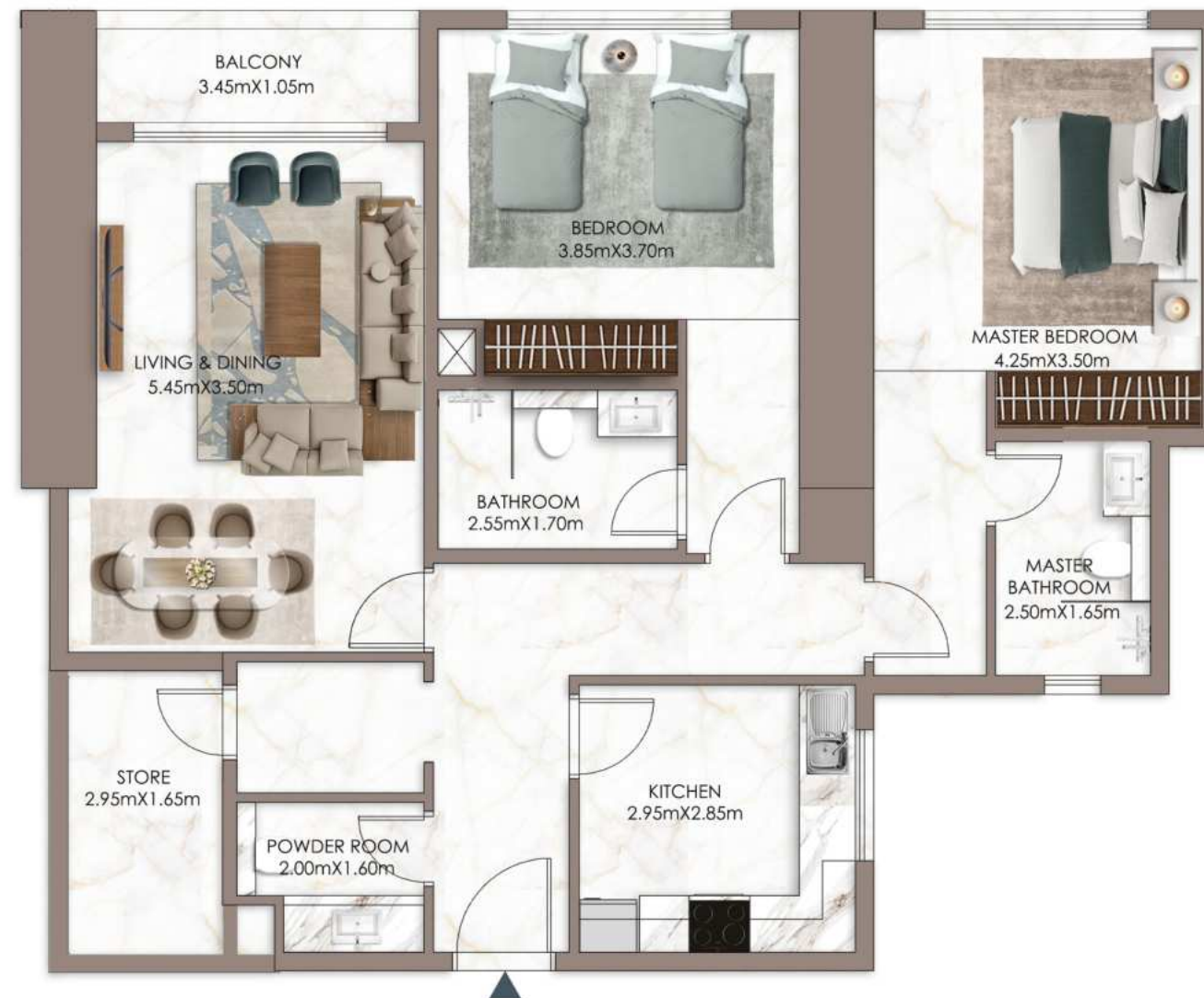


SKY GARDENS

TOWER



KEY PLAN



UNIT 204

2 BEDROOM

LEVEL 02

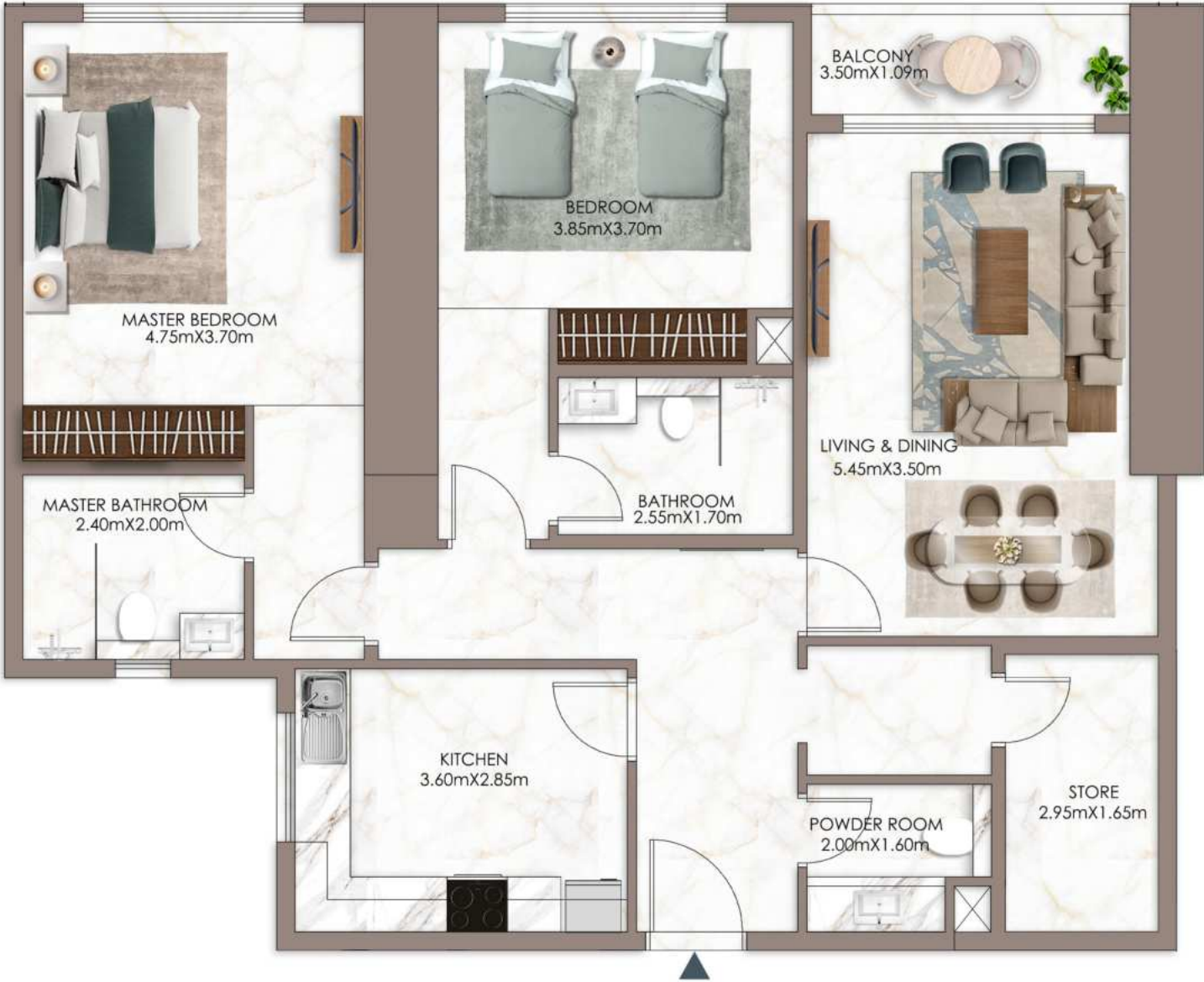
Internal Living Area	1135.70	sq.ft
Outdoor Living Area	49.73	sq.ft
Total Living Area	1185.43	sq.ft

DISCLAIMER:

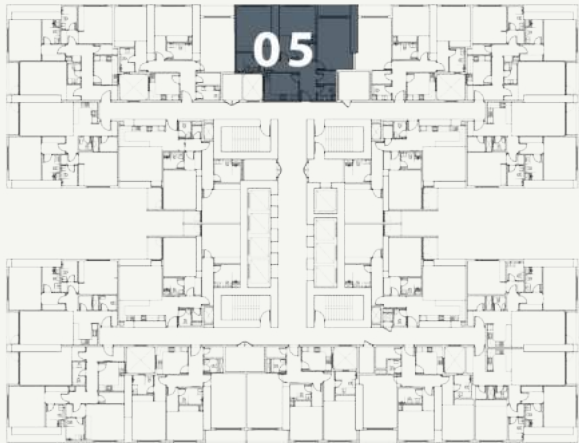
All measurements are indicative and are for marketing purposes only. All efforts have been made to ensure their accuracy, however these layouts are subject to change at the discretion of the developer and should not be relied upon as final. The actual area may vary from the stated area and the developer reserves the right to make the revisions/alterations, at its absolute discretion, without any liability whatsoever.

SKY GARDENS

TOWER



KEY PLAN



UNIT 205

2 BEDROOM

LEVEL 02

Internal Living Area	1196.19	sq.ft
Outdoor Living Area	49.73	sq.ft
Total Living Area	1245.92	sq.ft

DISCLAIMER:

All measurements are indicative and are for marketing purposes only. All efforts have been made to ensure their accuracy, however these layouts are subject to change at the discretion of the developer and should not be relied upon as final. The actual area may vary from the stated area and the developer reserves the right to make the revisions/alterations, at its absolute discretion, without any liability whatsoever

SKY GARDENS

TOWER



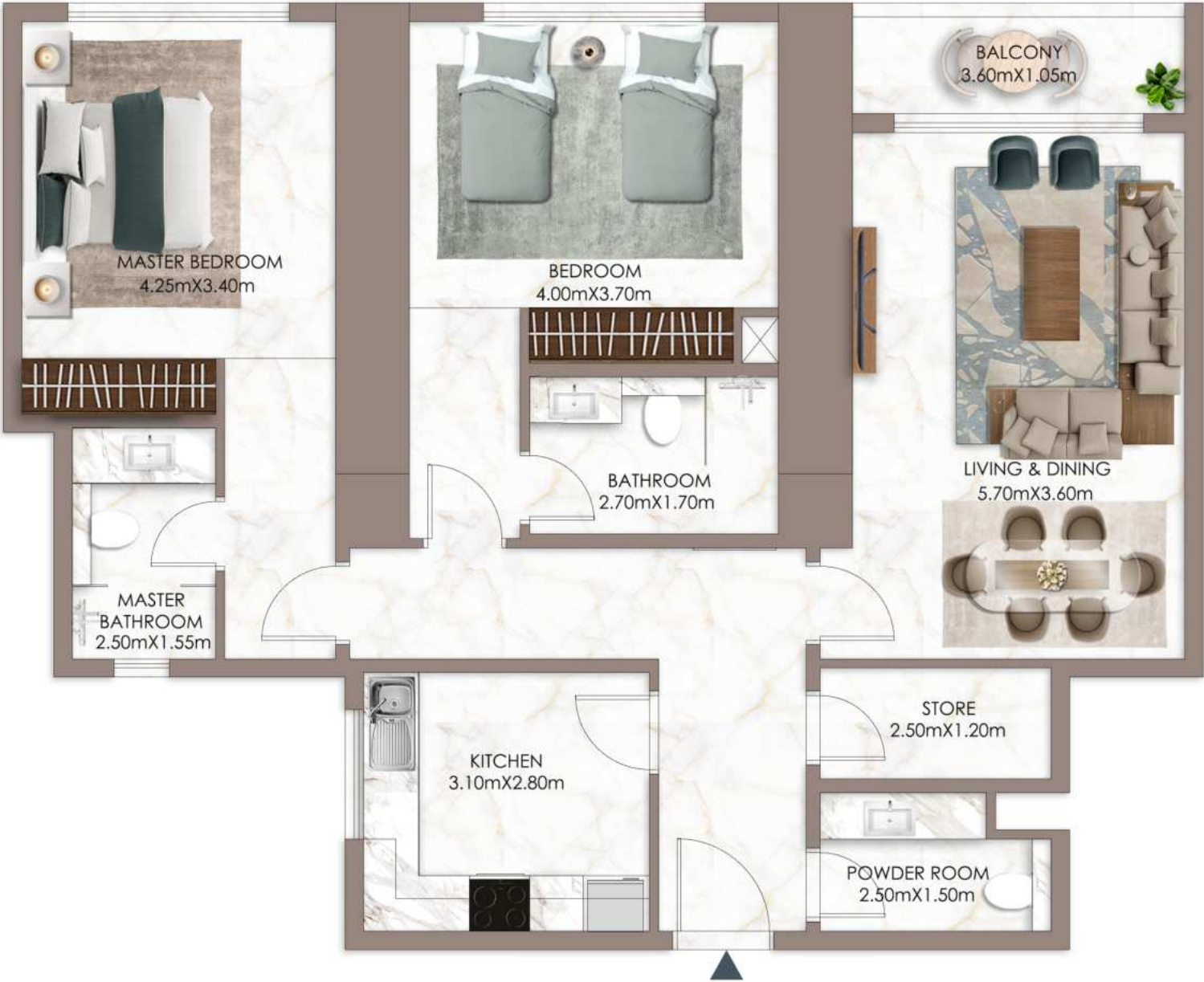
KEY PLAN



UNIT 206

2 BEDROOM

LEVEL 02



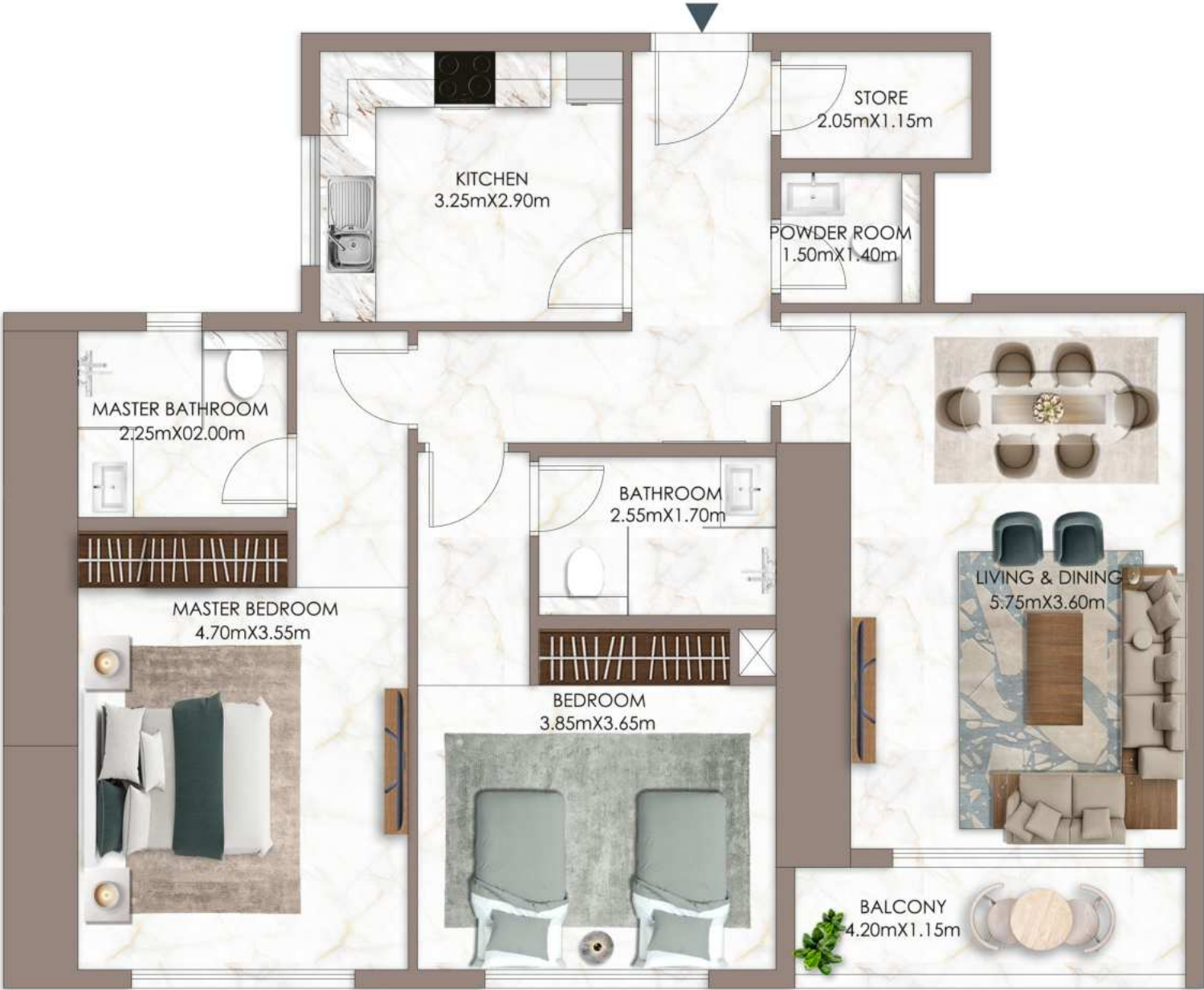
Internal Living Area	1143.02	sq.ft
Outdoor Living Area	47.79	sq.ft
Total Living Area	1190.81	sq.ft

DISCLAIMER:

All measurements are indicative and are for marketing purposes only. All efforts have been made to ensure their accuracy, however these layouts are subject to change at the discretion of the developer and should not be relied upon as final. The actual area may vary from the stated area and the developer reserves the right to make the revisions/alterations, at its absolute discretion, without any liability whatsoever

SKY GARDENS

TOWER



KEY PLAN



UNIT 213

2 BEDROOM

LEVEL 02

Internal Living Area	1113.31	sq.ft
Outdoor Living Area	60.17	sq.ft
Total Living Area	1173.48	sq.ft

DISCLAIMER:

All measurements are indicative and are for marketing purposes only. All efforts have been made to ensure their accuracy, however these layouts are subject to change at the discretion of the developer and should not be relied upon as final. The actual area may vary from the stated area and the developer reserves the right to make the revisions/alterations, at its absolute discretion, without any liability whatsoever

SKY GARDENS

TOWER



KEY PLAN



UNIT 214

2 BEDROOM

LEVEL 02

Internal Living Area	1058.20	sq.ft
Outdoor Living Area	61.57	sq.ft
Total Living Area	1119.77	sq.ft

DISCLAIMER:

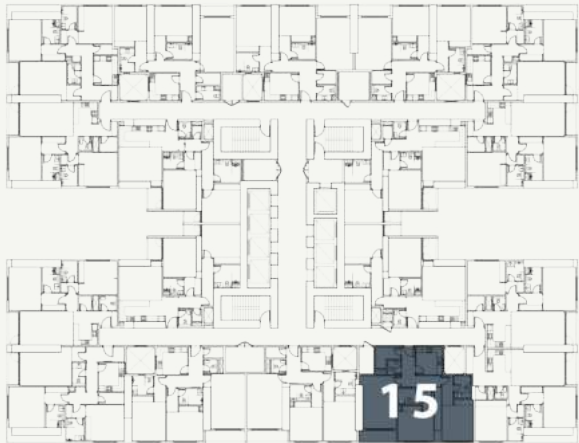
All measurements are indicative and are for marketing purposes only. All efforts have been made to ensure their accuracy, however these layouts are subject to change at the discretion of the developer and should not be relied upon as final. The actual area may vary from the stated area and the developer reserves the right to make the revisions/alterations, at its absolute discretion, without any liability whatsoever

SKY GARDENS

TOWER



KEY PLAN



UNIT 215

2 BEDROOM

LEVEL 02

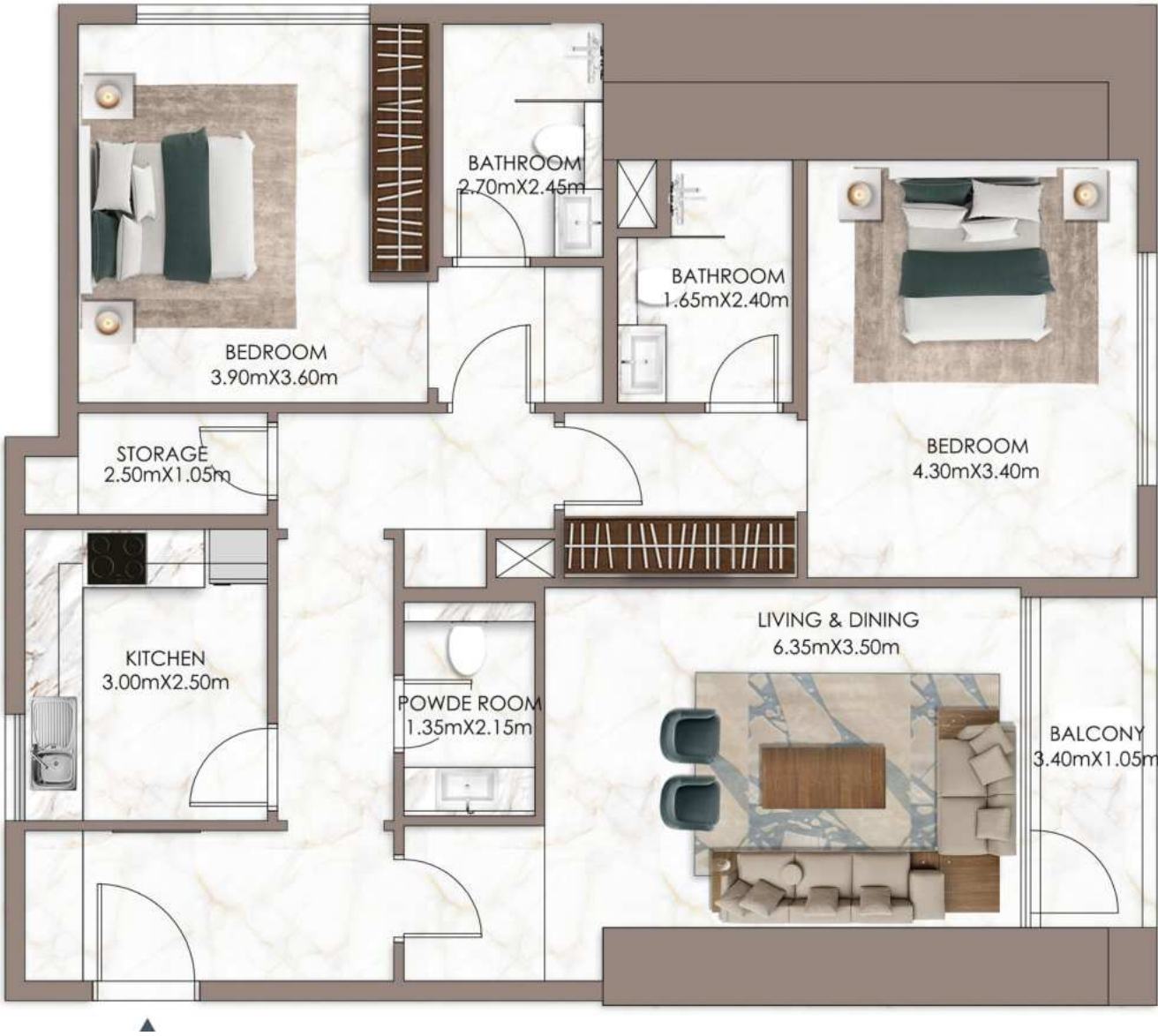
Internal Living Area	1076.61	sq.ft
Outdoor Living Area	56.73	sq.ft
Total Living Area	1133.33	sq.ft

DISCLAIMER:

All measurements are indicative and are for marketing purposes only. All efforts have been made to ensure their accuracy, however these layouts are subject to change at the discretion of the developer and should not be relied upon as final. The actual area may vary from the stated area and the developer reserves the right to make the revisions/alterations, at its absolute discretion, without any liability whatsoever

SKY GARDENS

TOWER



KEY PLAN



UNIT 203

2 BEDROOM

LEVEL 02

Internal Living Area	1174.67	sq.ft
Outdoor Living Area	49.08	sq.ft
Total Living Area	1223.75	sq.ft

DISCLAIMER:

All measurements are indicative and are for marketing purposes only. All efforts have been made to ensure their accuracy, however these layouts are subject to change at the discretion of the developer and should not be relied upon as final. The actual area may vary from the stated area and the developer reserves the right to make the revisions/alterations, at its absolute discretion, without any liability whatsoever

SKY GARDENS

TOWER



KEY PLAN



UNIT 207

2 BEDROOM

LEVEL 02

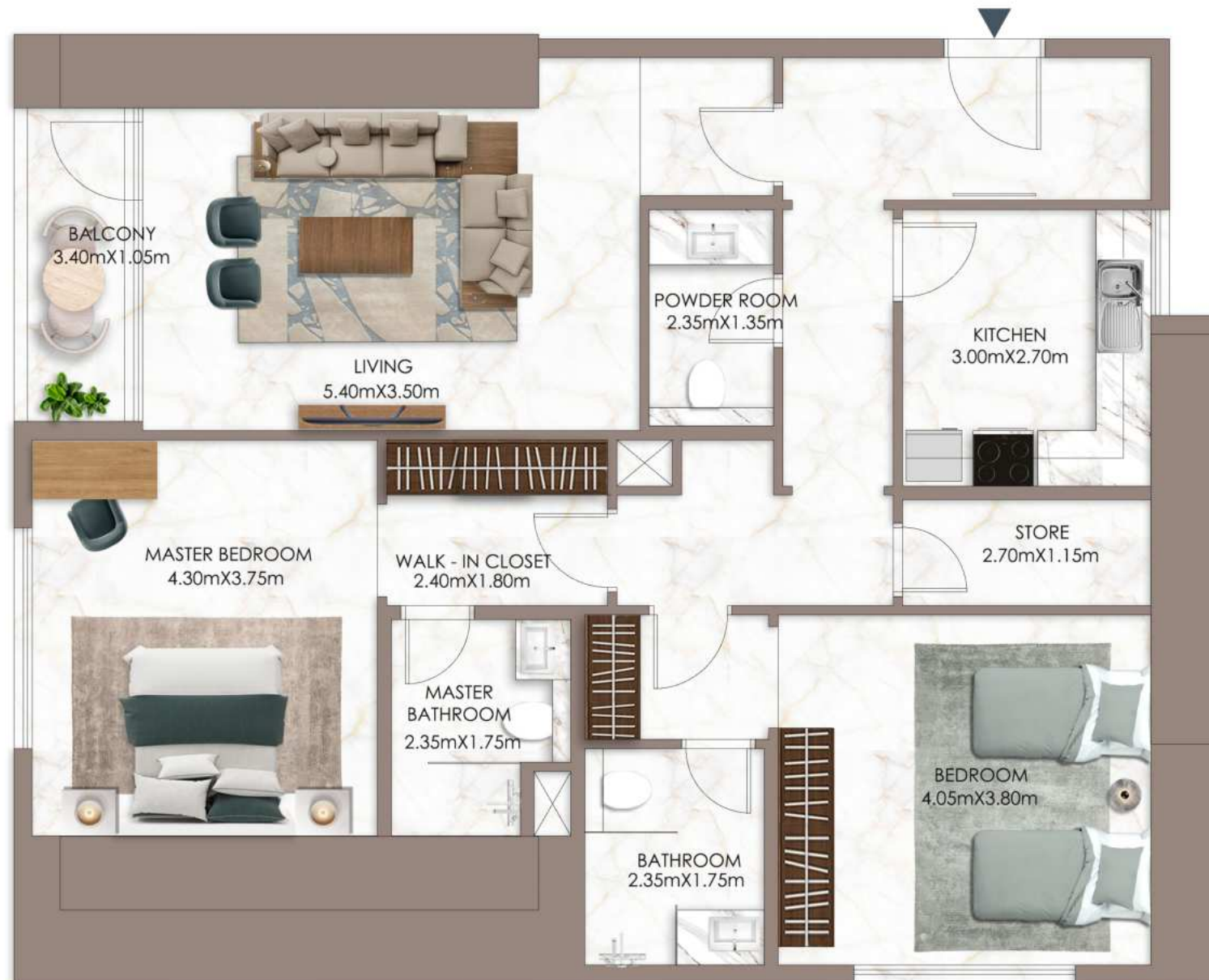
Internal Living Area	1174.67	sq.ft
Outdoor Living Area	49.08	sq.ft
Total Living Area	1223.75	sq.ft

DISCLAIMER:

All measurements are indicative and are for marketing purposes only. All efforts have been made to ensure their accuracy, however these layouts are subject to change at the discretion of the developer and should not be relied upon as final. The actual area may vary from the stated area and the developer reserves the right to make the revisions/alterations, at its absolute discretion, without any liability whatsoever

SKY GARDENS

TOWER



KEY PLAN



UNIT 212

2 BEDROOM

LEVEL 02

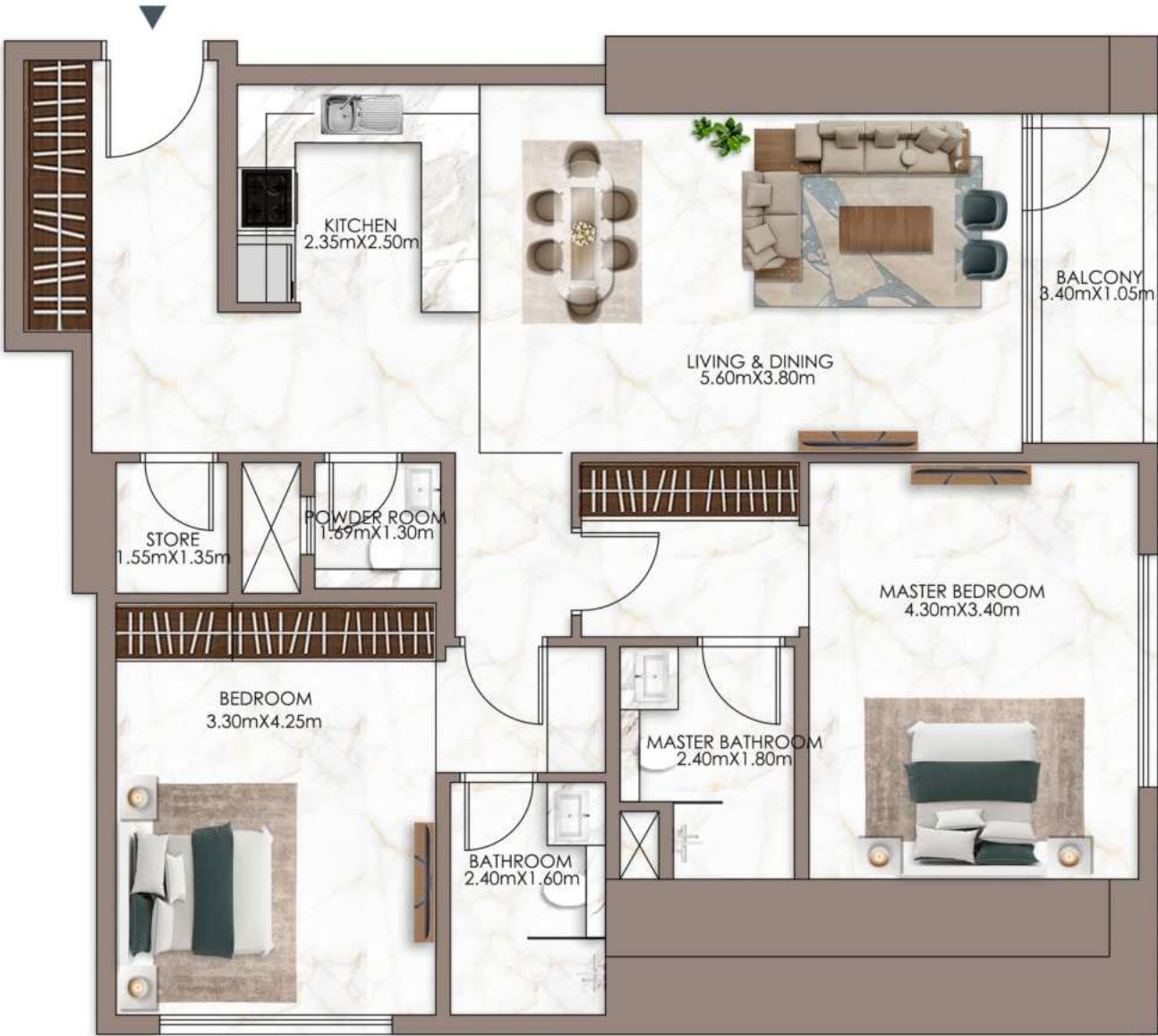
Internal Living Area	1299.96	sq.ft
Outdoor Living Area	49.08	sq.ft
Total Living Area	1349.04	sq.ft

DISCLAIMER:

All measurements are indicative and are for marketing purposes only. All efforts have been made to ensure their accuracy, however these layouts are subject to change at the discretion of the developer and should not be relied upon as final. The actual area may vary from the stated area and the developer reserves the right to make the revisions/alterations, at its absolute discretion, without any liability whatsoever.

SKY GARDENS

TOWER



KEY PLAN



UNIT 216

2 BEDROOM

LEVEL 02

Internal Living Area	1119.66	sq.ft
Outdoor Living Area	49.08	sq.ft
Total Living Area	1168.75	sq.ft

DISCLAIMER:

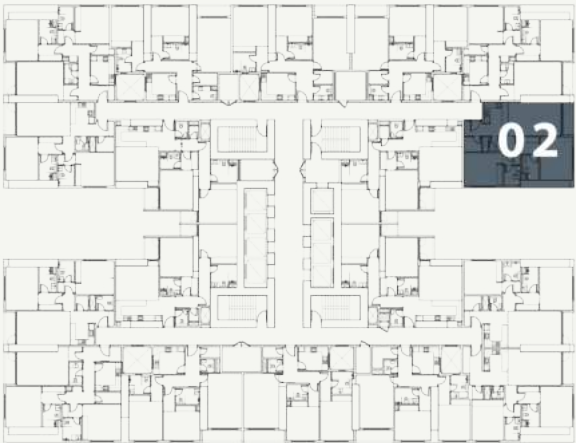
All measurements are indicative and are for marketing purposes only. All efforts have been made to ensure their accuracy, however these layouts are subject to change at the discretion of the developer and should not be relied upon as final. The actual area may vary from the stated area and the developer reserves the right to make the revisions/alterations, at its absolute discretion, without any liability whatsoever

SKY GARDENS

TOWER



KEY PLAN



UNIT 202

2 BEDROOM

LEVEL 02

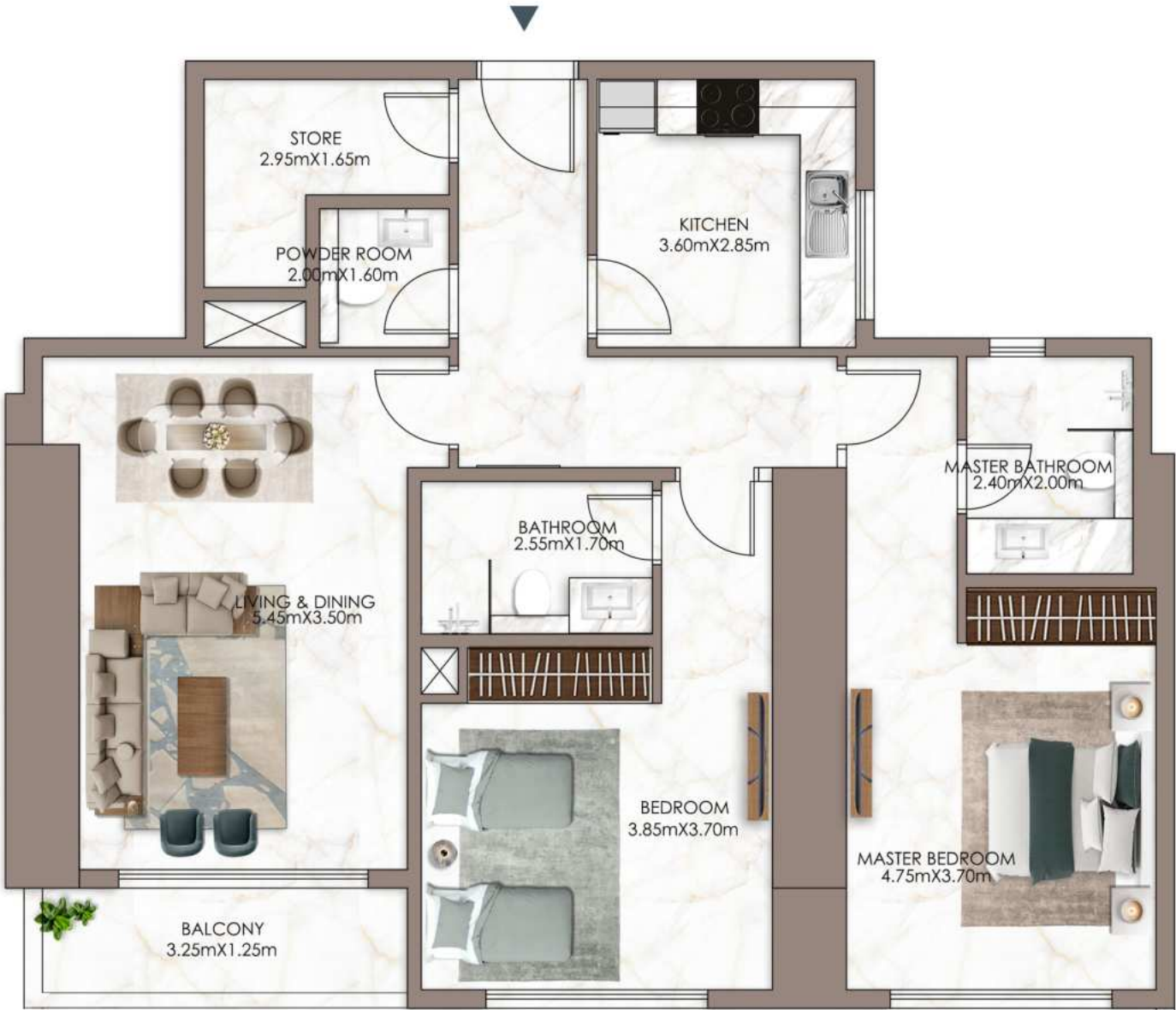
Internal Living Area	1040.01	sq.ft
Outdoor Living Area	49.08	sq.ft
Total Living Area	1089.09	sq.ft

DISCLAIMER:

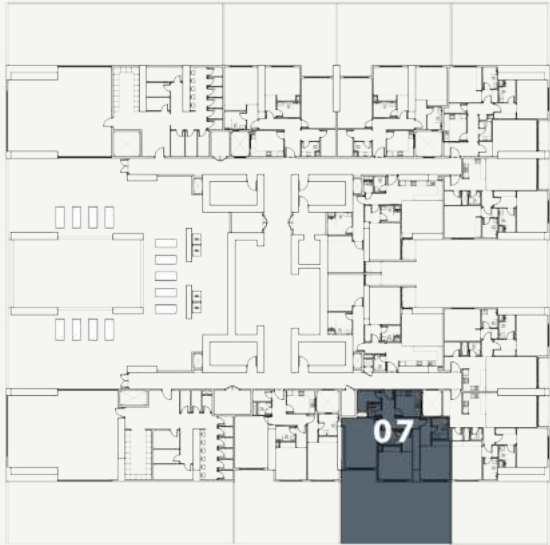
All measurements are indicative and are for marketing purposes only. All efforts have been made to ensure their accuracy, however these layouts are subject to change at the discretion of the developer and should not be relied upon as final. The actual area may vary from the stated area and the developer reserves the right to make the revisions/alterations, at its absolute discretion, without any liability whatsoever

SKY GARDENS

TOWER



KEY PLAN



UNIT 107

2 BEDROOM

LEVEL 01

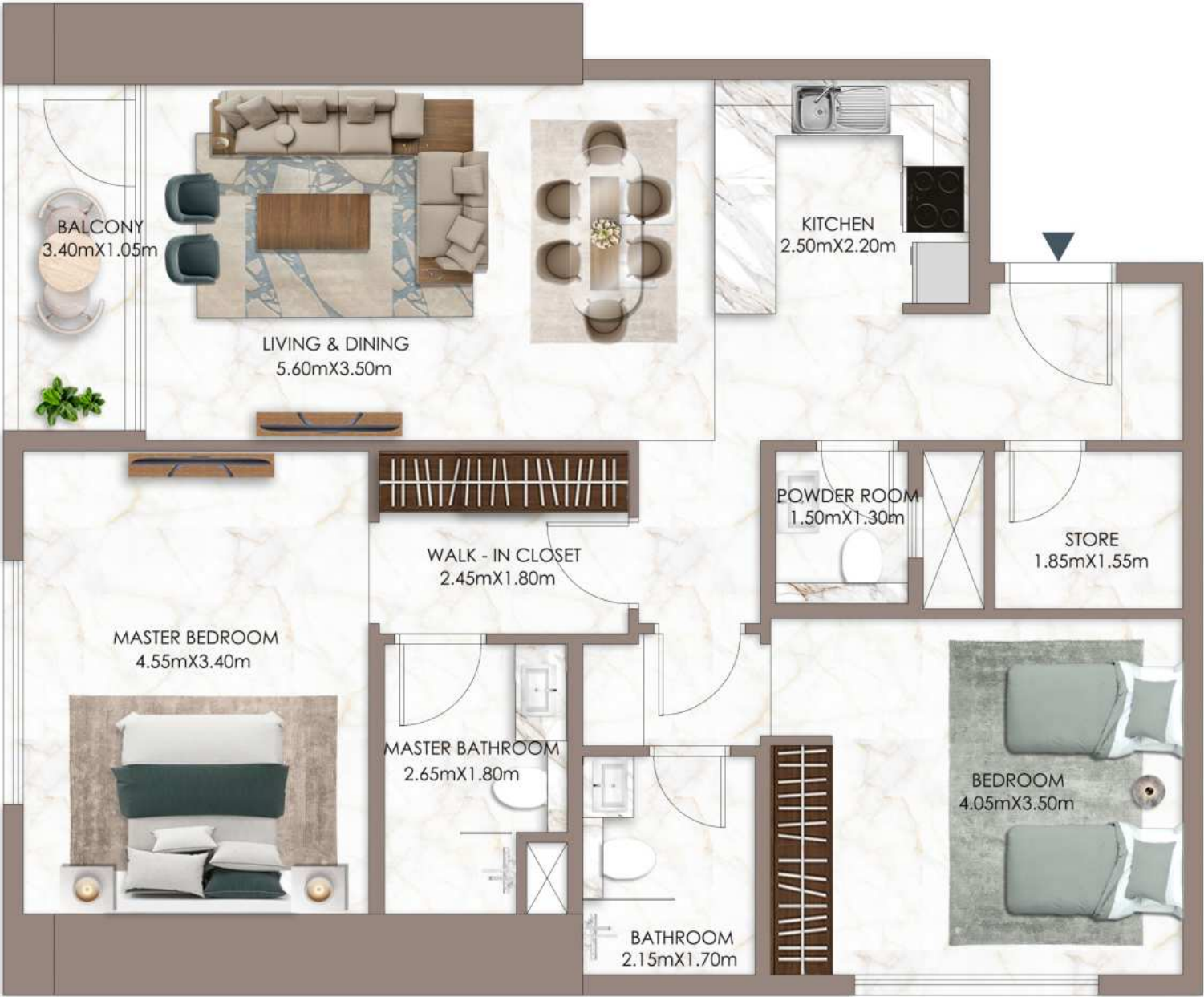
Internal Living Area	1076.61	sq.ft
Outdoor Living Area	979.62	sq.ft
Total Living Area	2056.23	sq.ft

DISCLAIMER:

All measurements are indicative and are for marketing purposes only. All efforts have been made to ensure their accuracy, however these layouts are subject to change at the discretion of the developer and should not be relied upon as final. The actual area may vary from the stated area and the developer reserves the right to make the revisions/alterations, at its absolute discretion, without any liability whatsoever

SKY GARDENS

TOWER



KEY PLAN



UNIT 208

2 BEDROOM

LEVEL 02

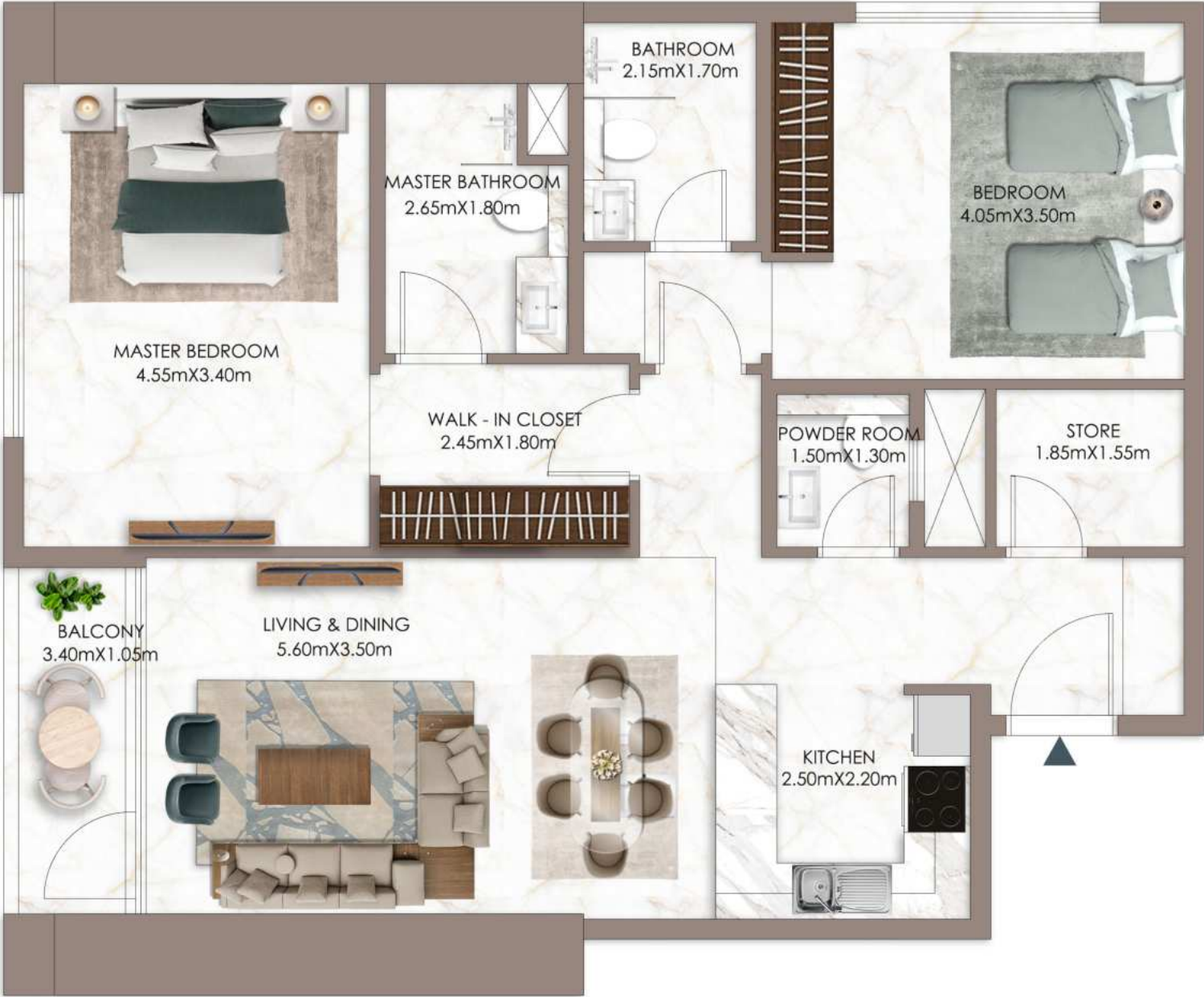
Internal Living Area	1040.44	sq.ft
Outdoor Living Area	49.08	sq.ft
Total Living Area	1089.52	sq.ft

DISCLAIMER:

All measurements are indicative and are for marketing purposes only. All efforts have been made to ensure their accuracy, however these layouts are subject to change at the discretion of the developer and should not be relied upon as final. The actual area may vary from the stated area and the developer reserves the right to make the revisions/alterations, at its absolute discretion, without any liability whatsoever

SKY GARDENS

TOWER



KEY PLAN



UNIT 211

2 BEDROOM

LEVEL 02

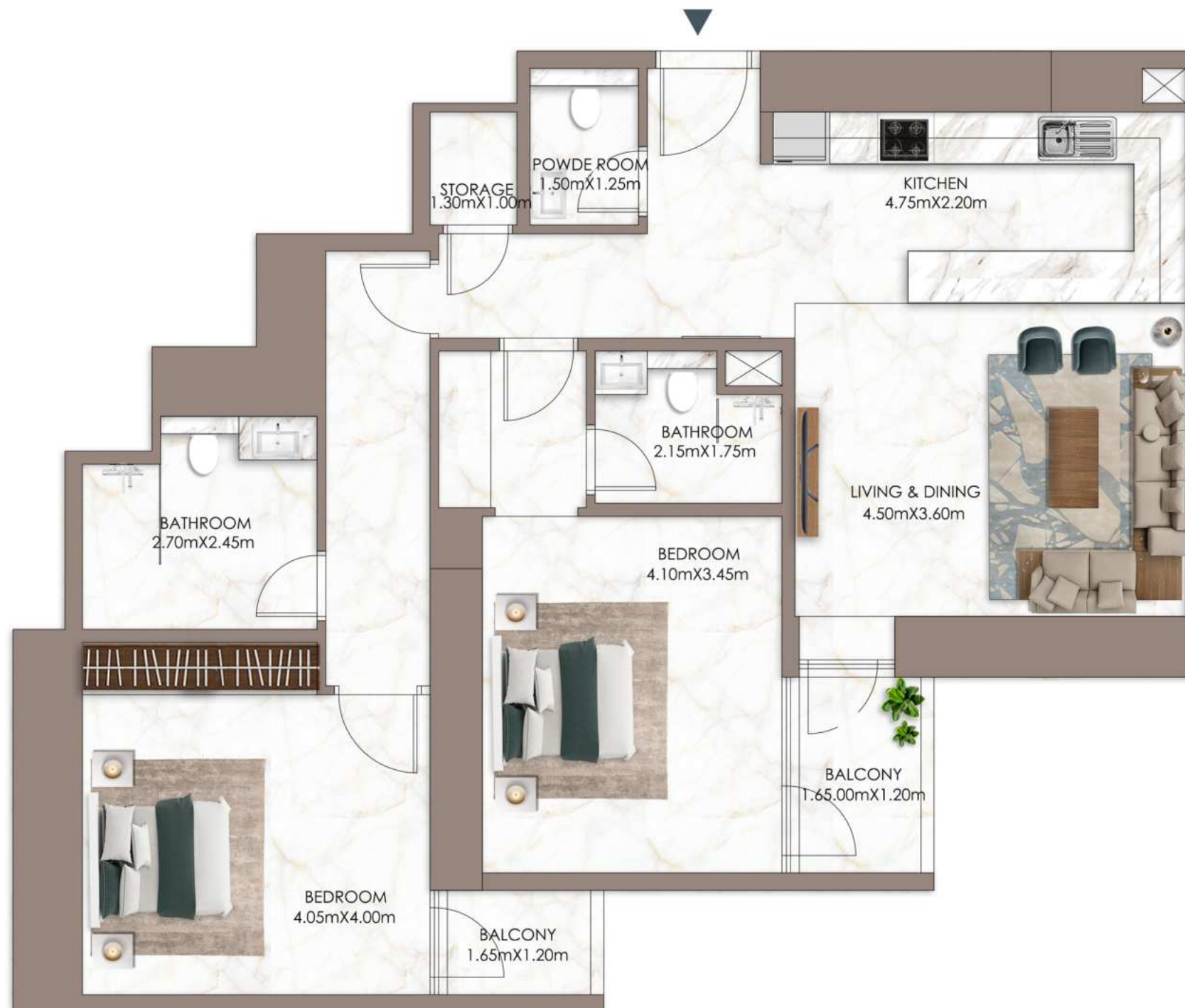
Internal Living Area	1040.01	sq.ft
Outdoor Living Area	49.08	sq.ft
Total Living Area	1089.09	sq.ft

DISCLAIMER:

All measurements are indicative and are for marketing purposes only. All efforts have been made to ensure their accuracy, however these layouts are subject to change at the discretion of the developer and should not be relied upon as final. The actual area may vary from the stated area and the developer reserves the right to make the revisions/alterations, at its absolute discretion, without any liability whatsoever

SKY GARDENS

TOWER



KEY PLAN



UNIT 201

2 BEDROOM

LEVEL 02

Internal Living Area	1048.40	sq.ft
Outdoor Living Area	66.09	sq.ft
Total Living Area	1114.50	sq.ft

DISCLAIMER:

All measurements are indicative and are for marketing purposes only. All efforts have been made to ensure their accuracy, however these layouts are subject to change at the discretion of the developer and should not be relied upon as final. The actual area may vary from the stated area and the developer reserves the right to make the revisions/alterations, at its absolute discretion, without any liability whatsoever.

SKY GARDENS

TOWER



KEY PLAN



UNIT 209

2 BEDROOM

LEVEL 02

Internal Living Area	1048.40	sq.ft
Outdoor Living Area	66.09	sq.ft
Total Living Area	1114.50	sq.ft

DISCLAIMER:

All measurements are indicative and are for marketing purposes only. All efforts have been made to ensure their accuracy, however these layouts are subject to change at the discretion of the developer and should not be relied upon as final. The actual area may vary from the stated area and the developer reserves the right to make the revisions/alterations, at its absolute discretion, without any liability whatsoever

SKY GARDENS

TOWER



KEY PLAN



UNIT 210

2 BEDROOM

LEVEL 02

Internal Living Area	1048.40	sq.ft
Outdoor Living Area	66.09	sq.ft
Total Living Area	1114.50	sq.ft

DISCLAIMER:

All measurements are indicative and are for marketing purposes only. All efforts have been made to ensure their accuracy, however these layouts are subject to change at the discretion of the developer and should not be relied upon as final. The actual area may vary from the stated area and the developer reserves the right to make the revisions/alterations, at its absolute discretion, without any liability whatsoever

SKY GARDENS

TOWER



KEY PLAN



UNIT 218

2 BEDROOM

LEVEL 02

Internal Living Area	1030.32	sq.ft
Outdoor Living Area	66.09	sq.ft
Total Living Area	1096.41	sq.ft

DISCLAIMER:

All measurements are indicative and are for marketing purposes only. All efforts have been made to ensure their accuracy, however these layouts are subject to change at the discretion of the developer and should not be relied upon as final. The actual area may vary from the stated area and the developer reserves the right to make the revisions/alterations, at its absolute discretion, without any liability whatsoever