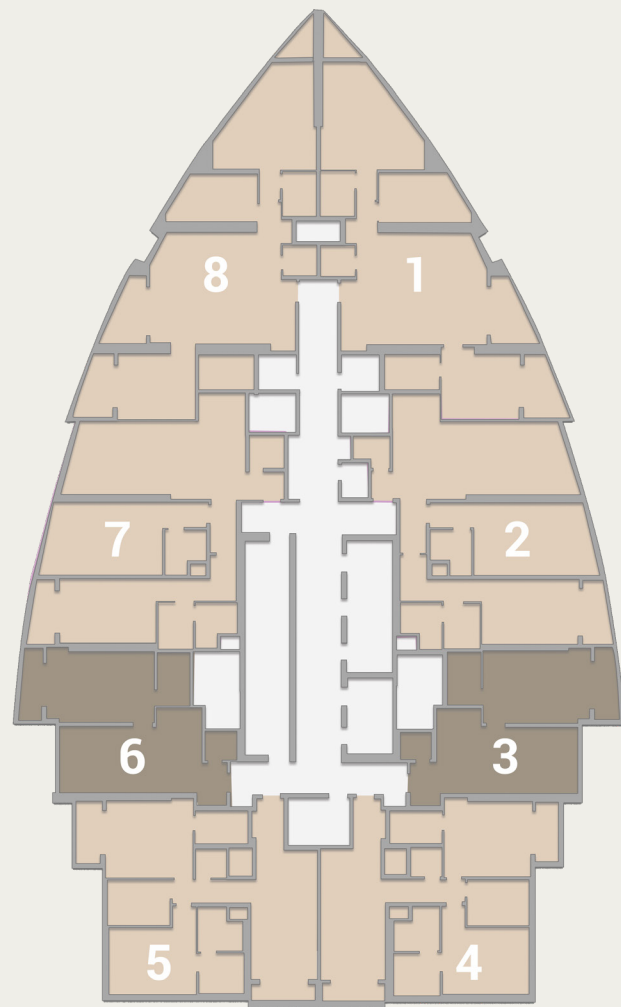
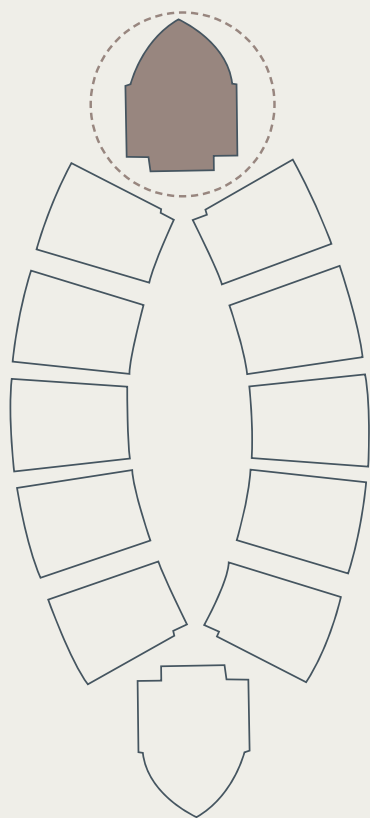


# AJMAN PEARL

TOWER



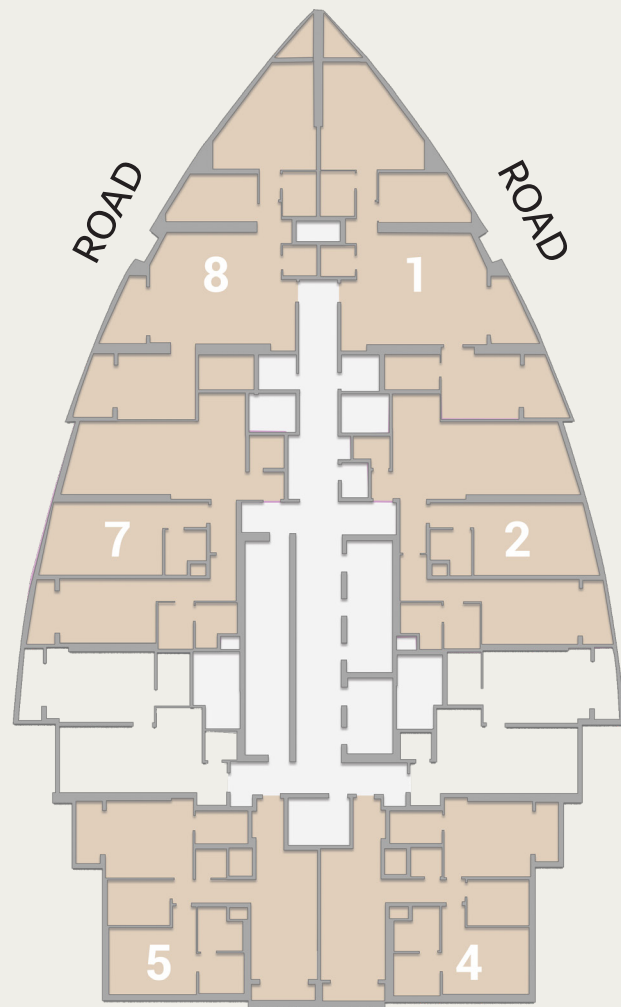
## A NEW RESIDENTIAL GEM


Ajman Pearl Tower, developed by GJ Properties, offers a unique blend of sophistication and modern comfort in 208 exclusive apartments. With its prime location, exclusive homes, and unmatched quality, it aims to be a coveted address in the city.



# AJMAN PEARL TOWER

## CLOSED KITCHEN



 2 BEDROOM

NEIGHBOUR

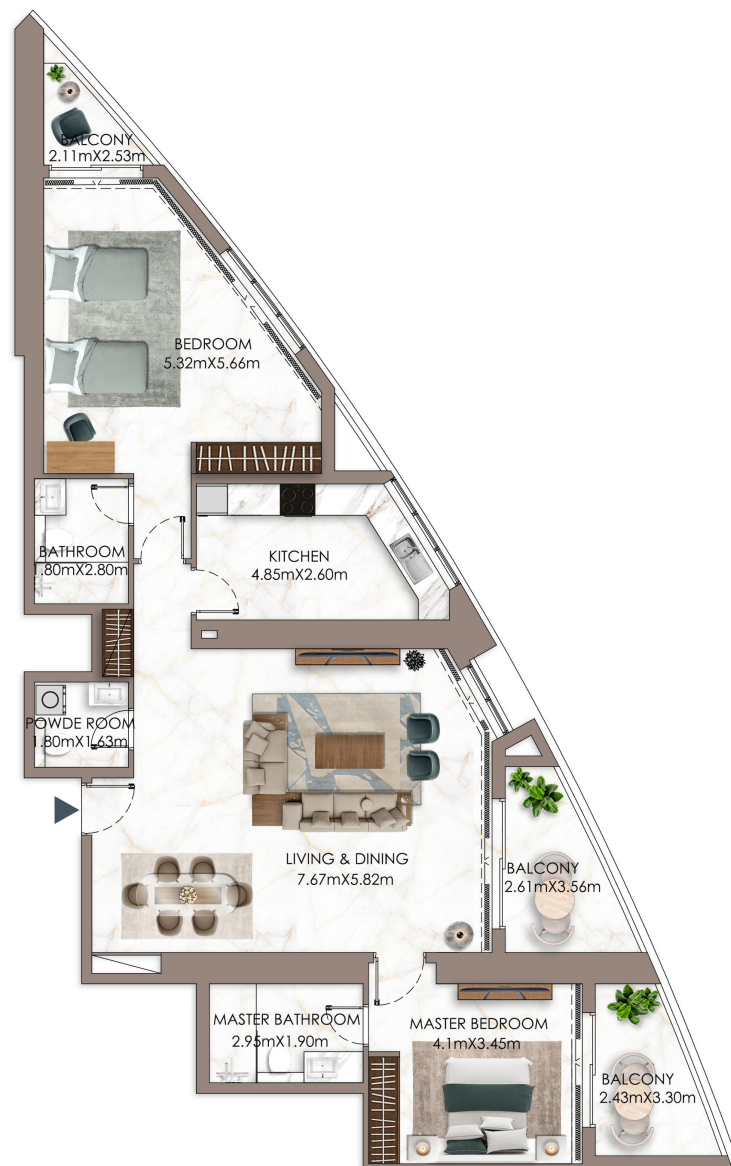
## MODERN LIVING SPACES

Ajman Pearl Tower features meticulously designed 1-bedroom (1083 sqft) and 2-bedroom (2096 sqft) apartments. Each residence offers spacious layouts, high-quality finishes, and contemporary design elements, creating a haven of tranquility.

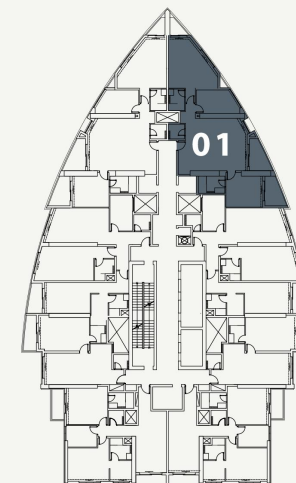


# AJMAN PEARL

TOWER



## KEY PLAN



## UNIT - 101

### 2 BEDROOM

#### LEVEL-01

Internal Living Area	1413.41	sq.ft.
Outdoor Living Area	167.27	sq.ft.
<b>Total Living Area</b>	<b>1580.68</b>	<b>sq.ft.</b>

#### DISCLAIMER:

All measurements are indicative and are for marketing purposes only. All efforts have been made to ensure their accuracy, however these layouts are subject to change at the discretion of the developer and should not be relied upon as final. The actual area may vary from the stated area and the developer reserves the right to make the revisions/alterations, at its absolute discretion, without any liability whatsoever.

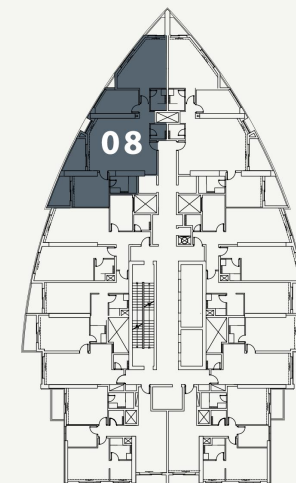


# AJMAN PEARL

TOWER



## KEY PLAN



## UNIT - 108

### 2 BEDROOM

#### LEVEL-01

Internal Living Area	1413.41	sq.ft.
Outdoor Living Area	138.21	sq.ft.
<b>Total Living Area</b>	<b>1551.62</b>	<b>sq.ft.</b>

#### DISCLAIMER:

All measurements are indicative and are for marketing purposes only. All efforts have been made to ensure their accuracy, however these layouts are subject to change at the discretion of the developer and should not be relied upon as final. The actual area may vary from the stated area and the developer reserves the right to make the revisions/alterations, at its absolute discretion, without any liability whatsoever.

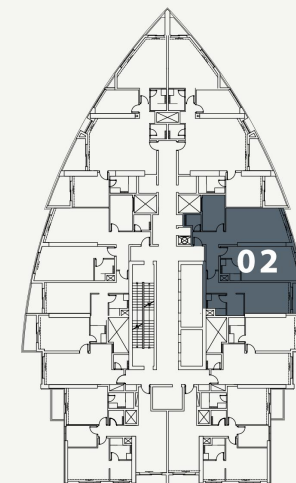


# AJMAN PEARL

TOWER



## KEY PLAN



## UNIT - 102

### 2 BEDROOM

#### LEVEL-01

Internal Living Area	1402.00	sq.ft.
Outdoor Living Area	113.02	sq.ft.
<b>Total Living Area</b>	<b>1515.02</b>	<b>sq.ft.</b>

#### DISCLAIMER:

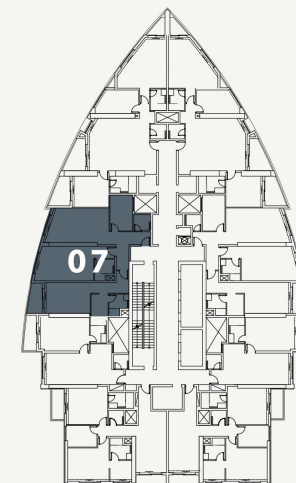
All measurements are indicative and are for marketing purposes only. All efforts have been made to ensure their accuracy, however these layouts are subject to change at the discretion of the developer and should not be relied upon as final. The actual area may vary from the stated area and the developer reserves the right to make the revisions/alterations, at its absolute discretion, without any liability whatsoever.

# AJMAN PEARL

TOWER



## KEY PLAN



## UNIT - 107

### 2 BEDROOM

#### LEVEL-01

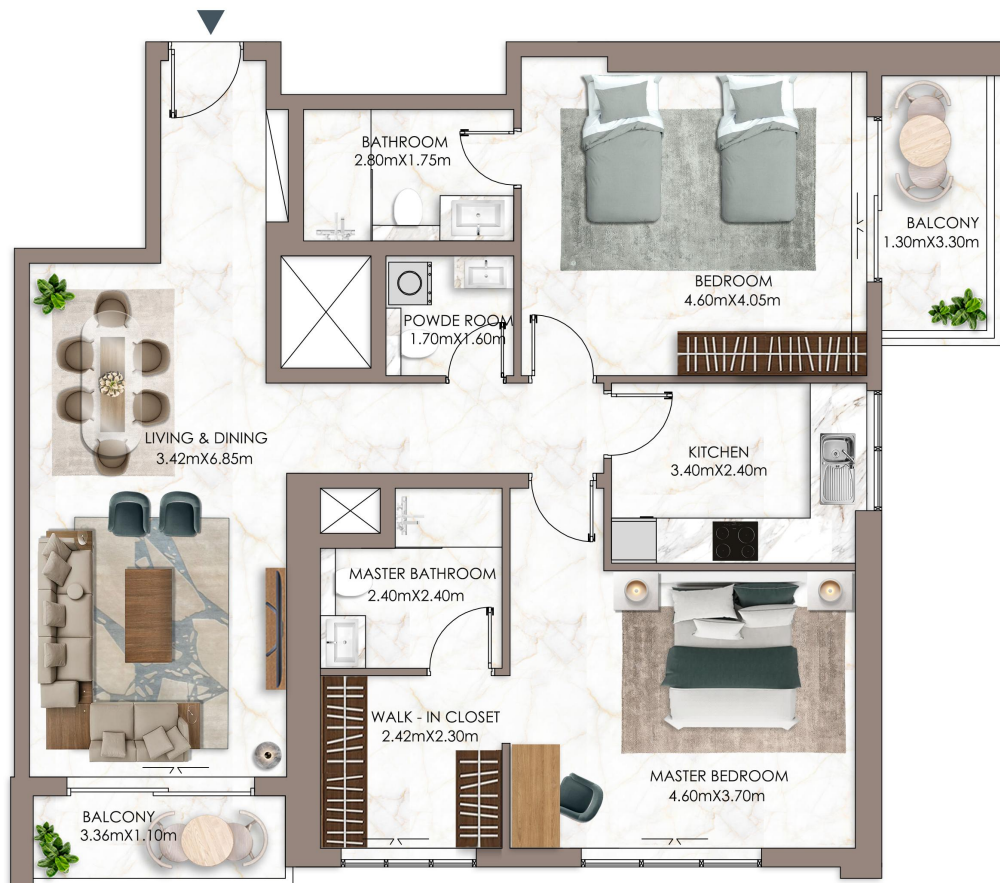
Internal Living Area	1402.00	sq.ft.
Outdoor Living Area	55.43	sq.ft.
<b>Total Living Area</b>	<b>1457.43</b>	<b>sq.ft.</b>

#### DISCLAIMER:

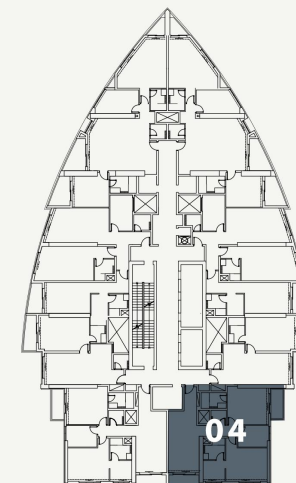
All measurements are indicative and are for marketing purposes only. All efforts have been made to ensure their accuracy, however these layouts are subject to change at the discretion of the developer and should not be relied upon as final. The actual area may vary from the stated area and the developer reserves the right to make the revisions/alterations, at its absolute discretion, without any liability whatsoever.

# AJMAN PEARL

TOWER



## KEY PLAN



## UNIT - 104

### 2 BEDROOM

LEVEL-01

Internal Living Area	1228.59	sq.ft.
Outdoor Living Area	111.30	sq.ft.
<b>Total Living Area</b>	<b>1339.89</b>	<b>sq.ft.</b>

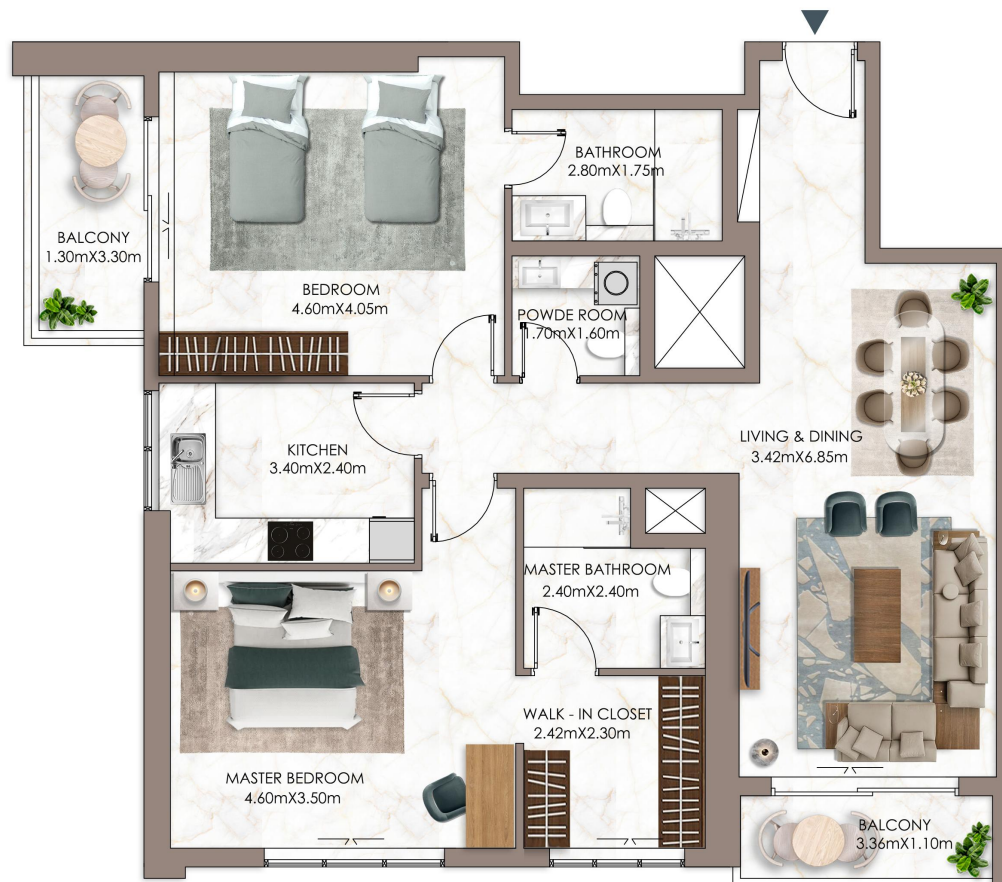
### DISCLAIMER:

All measurements are indicative and are for marketing purposes only. All efforts have been made to ensure their accuracy, however these layouts are subject to change at the discretion of the developer and should not be relied upon as final. The actual area may vary from the stated area and the developer reserves the right to make the revisions/alterations, at its absolute discretion, without any liability whatsoever.

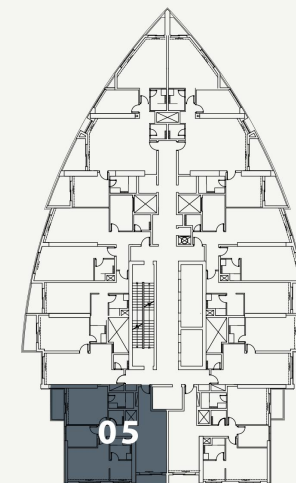


# AJMAN PEARL

TOWER



## KEY PLAN



## UNIT - 105

### 2 BEDROOM

#### LEVEL-01

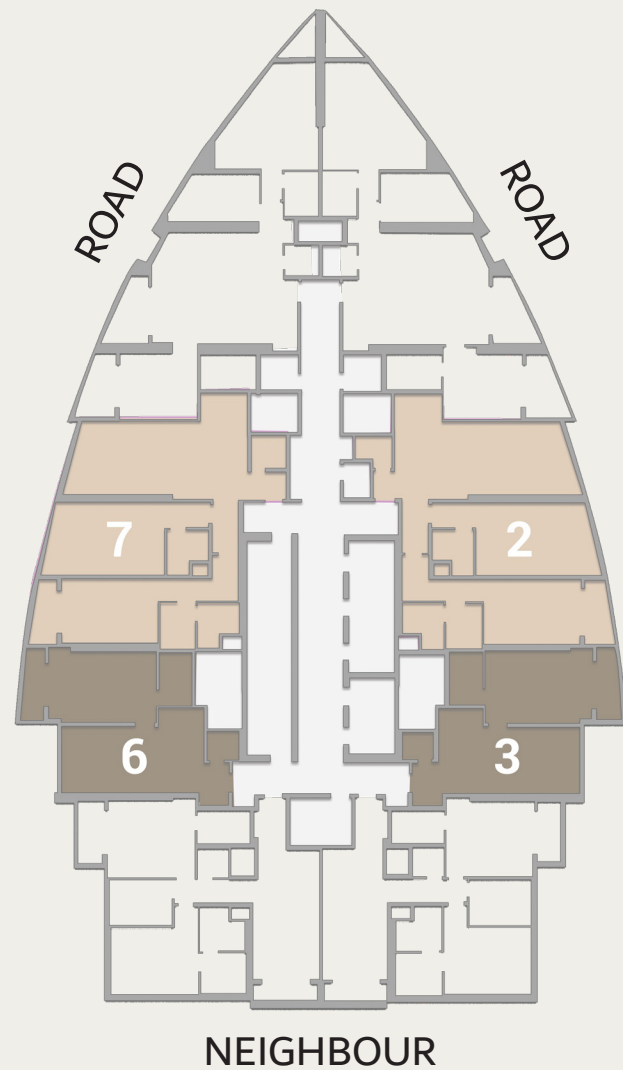
Internal Living Area	1228.49	sq.ft.
Outdoor Living Area	111.30	sq.ft.
<b>Total Living Area</b>	<b>1339.78</b>	<b>sq.ft.</b>

#### DISCLAIMER:

All measurements are indicative and are for marketing purposes only. All efforts have been made to ensure their accuracy, however these layouts are subject to change at the discretion of the developer and should not be relied upon as final. The actual area may vary from the stated area and the developer reserves the right to make the revisions/alterations, at its absolute discretion, without any liability whatsoever.

# AJMAN PEARL TOWER

OPENED KITCHEN



- 1 BEDROOM
- 2 BEDROOM

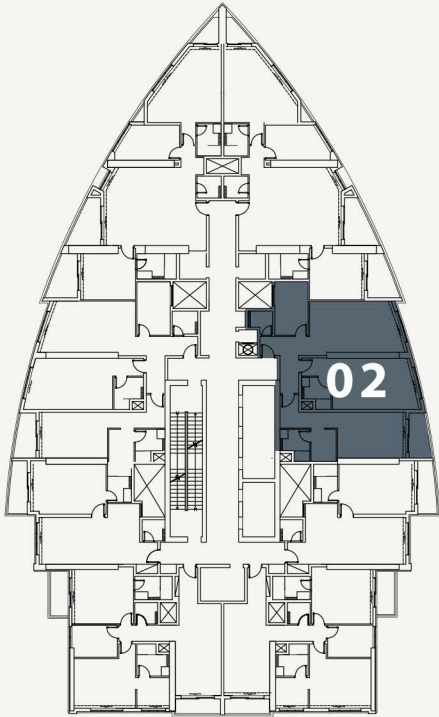
## AN ENRICHED LIFE

Ajman Pearl Tower offers amenities designed to enhance residents' lifestyles and provide opportunities for relaxation, recreation, and community engagement.





KEY PLAN



UNIT - 102  
2 BEDROOM  
LEVEL-01

Internal Living Area	1402.00	sq.ft.
Outdoor Living Area	113.02	sq.ft.
Total Living Area	1515.02	sq.ft.

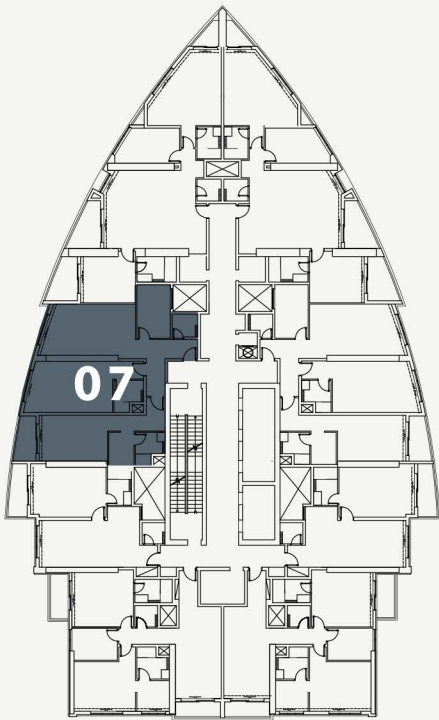
DISCLAIMER:

All measurements are indicative and are for marketing purposes only. All efforts have been made to ensure their accuracy, however these layouts are subject to change at the discretion of the developer and should not be relied upon as final. The actual area may vary from the stated area and the developer reserves the right to make the revisions/alterations, at its absolute discretion, without any liability whatsoever





KEY PLAN



UNIT - 107  
2 BEDROOM  
LEVEL-01

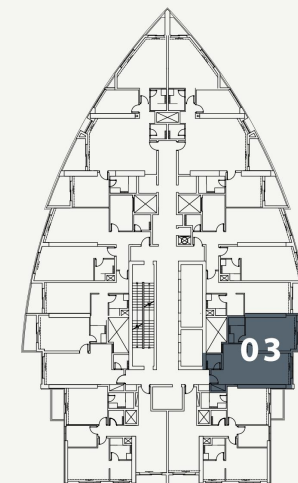
Internal Living Area	1402.00	sq.ft.
Outdoor Living Area	55.43	sq.ft.
Total Living Area	1457.43	sq.ft.

DISCLAIMER:

All measurements are indicative and are for marketing purposes only. All efforts have been made to ensure their accuracy, however these layouts are subject to change at the discretion of the developer and should not be relied upon as final. The actual area may vary from the stated area and the developer reserves the right to make the revisions/alterations, at its absolute discretion, without any liability whatsoever



## KEY PLAN



## UNIT - 103

1 BEDROOM

LEVEL-01

Internal Living Area	756.70	sq.ft.
Outdoor Living Area	60.06	sq.ft.
<b>Total Living Area</b>	<b>816.77</b>	<b>sq.ft.</b>

### DISCLAIMER:

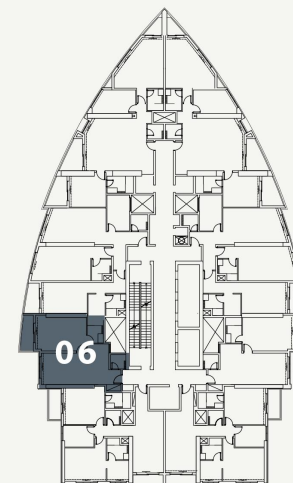
All measurements are indicative and are for marketing purposes only. All efforts have been made to ensure their accuracy, however these layouts are subject to change at the discretion of the developer and should not be relied upon as final. The actual area may vary from the stated area and the developer reserves the right to make the revisions/alterations, at its absolute discretion, without any liability whatsoever.

# AJMAN PEARL

TOWER



## KEY PLAN



## UNIT - 106

### 1 BEDROOM

#### LEVEL-01

Internal Living Area	756.70 sq.ft.
Outdoor Living Area	60.06 sq.ft.
<b>Total Living Area</b>	<b>816.77 sq.ft.</b>

#### DISCLAIMER:

All measurements are indicative and are for marketing purposes only. All efforts have been made to ensure their accuracy, however these layouts are subject to change at the discretion of the developer and should not be relied upon as final. The actual area may vary from the stated area and the developer reserves the right to make the revisions/alterations, at its absolute discretion, without any liability whatsoever.