

GROUND FLOOR



1-BEDROOM APARTMENT 2-BEDROOM APARTMENT LOFT RETAIL / FOOD & BEVERAGE

FIRST FLOOR



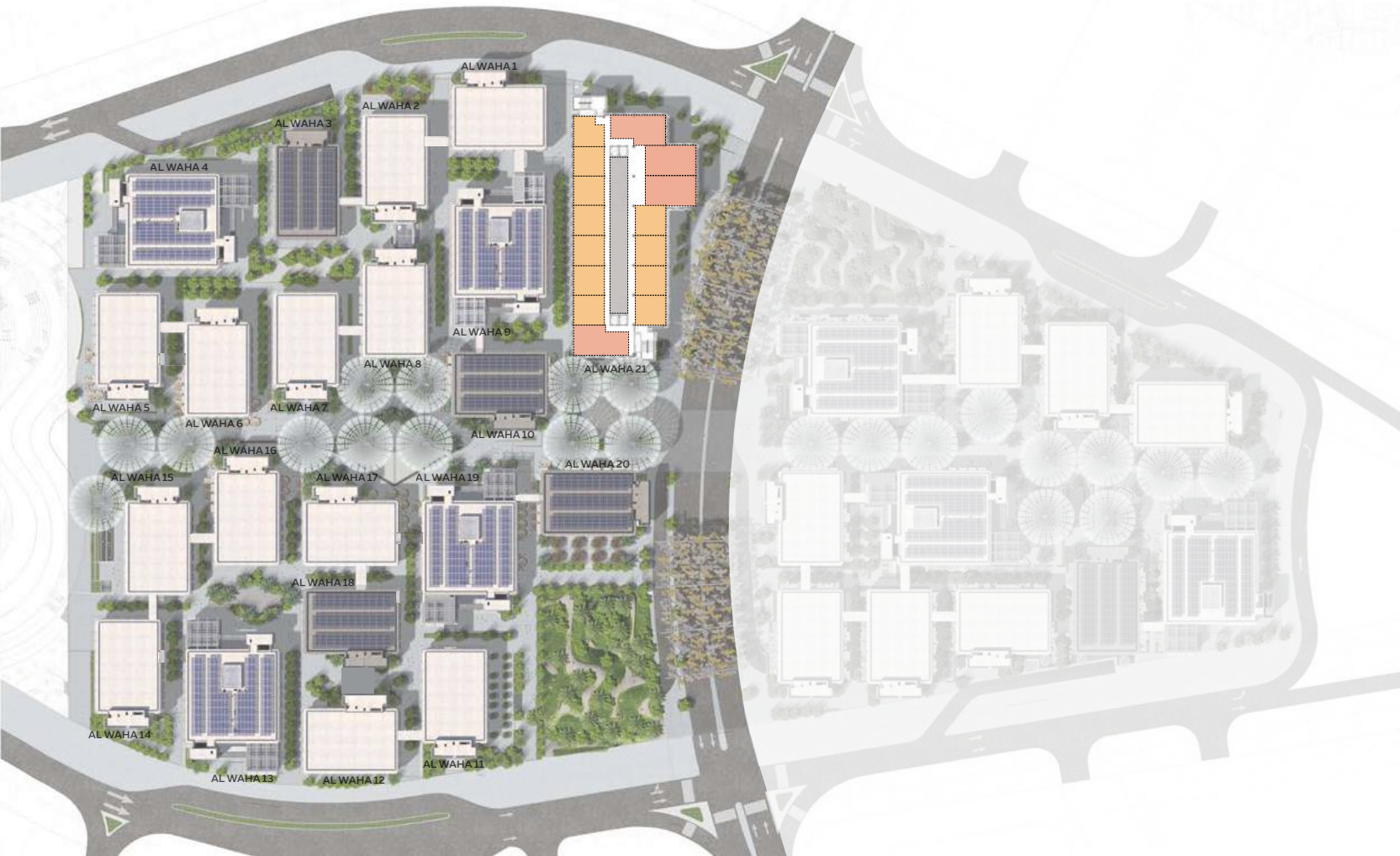
1-BEDROOM APARTMENT 2-BEDROOM APARTMENT LOFT

SECOND FLOOR



1-BEDROOM APARTMENT 2-BEDROOM APARTMENT

THIRD FLOOR



1-BEDROOM APARTMENT 2-BEDROOM APARTMENT

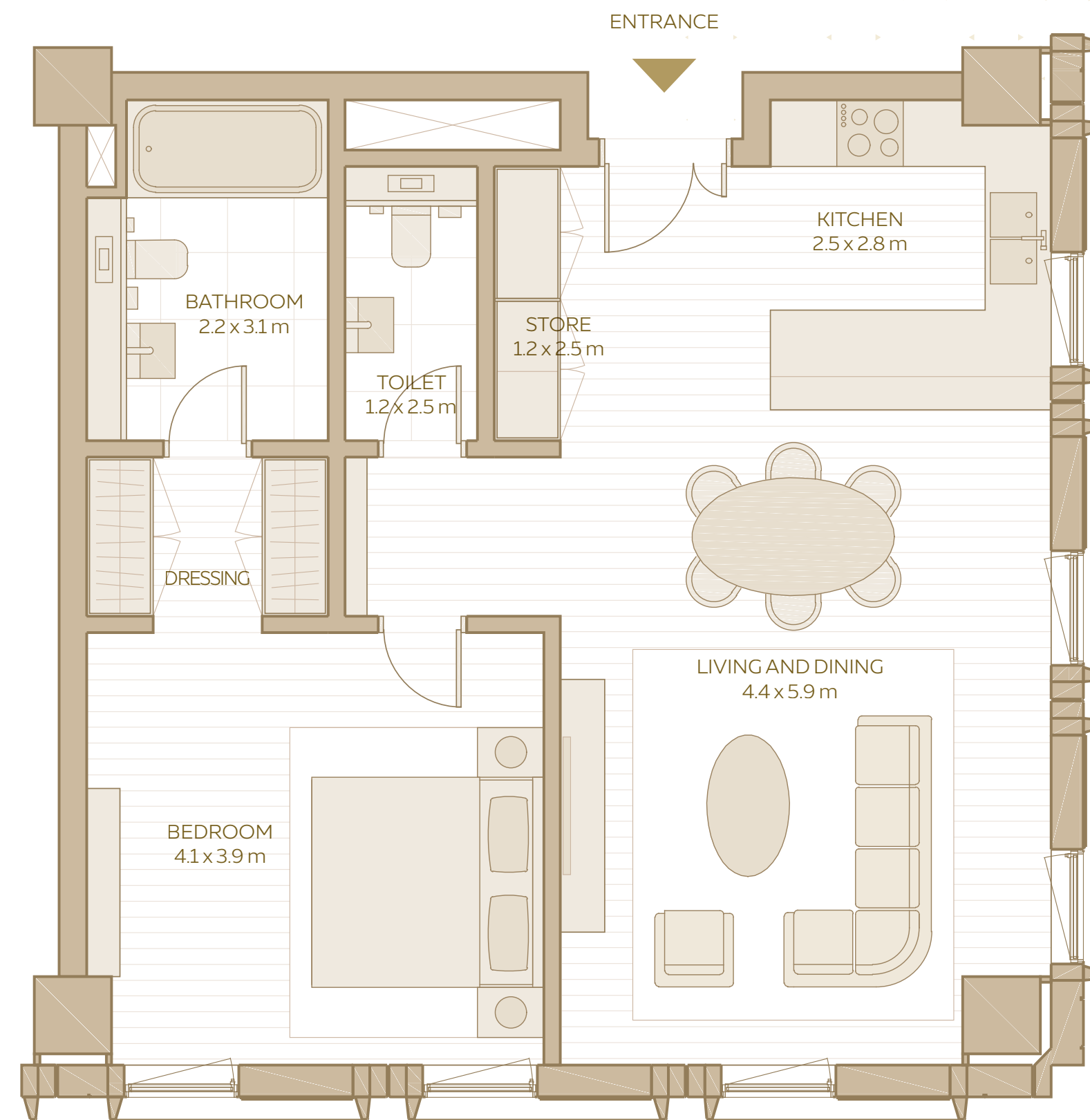
MOBILITY DISTRICT

There are 284 units on offer in the Mobility District across all floors.





## 1-BEDROOM APARTMENT (TYPE 1)



## 1-BEDROOM APARTMENT TYPE 1

AREA RANGE:  
72.35 SQM - 78.49 SQM  
778.77 SQFT - 844.86 SQFT

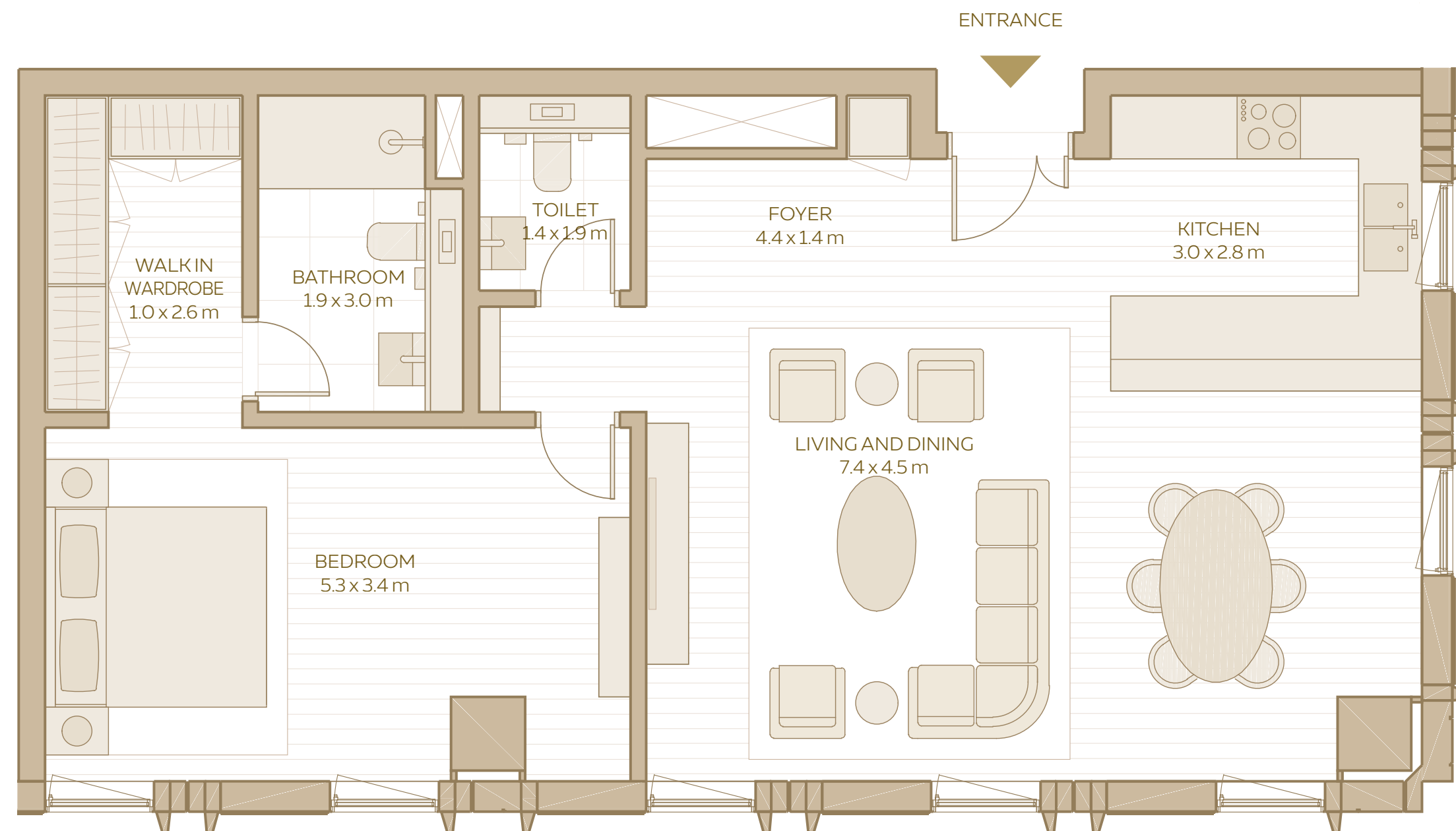


DISCLAIMER: 1. All room dimensions are in metres to the nearest decimal place, measured to structural elements, and exclude wall finishes and construction tolerances. 2. All dimensions have been provided by our consultant architects. 3. Areas are exclusive of partition walls, risers and terraces. 4. All materials, dimensions, drawings, features and amenities are approximate at the time of printing. 5. Actual area may vary from stated area. 6. Drawings not to scale E&OE. 7. Unit plans may exist in mirrored versions. 8. The developer reserves the right to make revisions to the floor plans and any features, materials, dimensions, drawings and amenities mentioned on this plan and in the brochure without notice.

AL WAHA

09 – UNIT PLANS

## 1-BEDROOM APARTMENT (TYPE 2)



## 1-BEDROOM APARTMENT TYPE 2

AREA RANGE:  
85.64 SQM - 95.09 SQM  
921.82 SQFT - 1023.54 SQFT



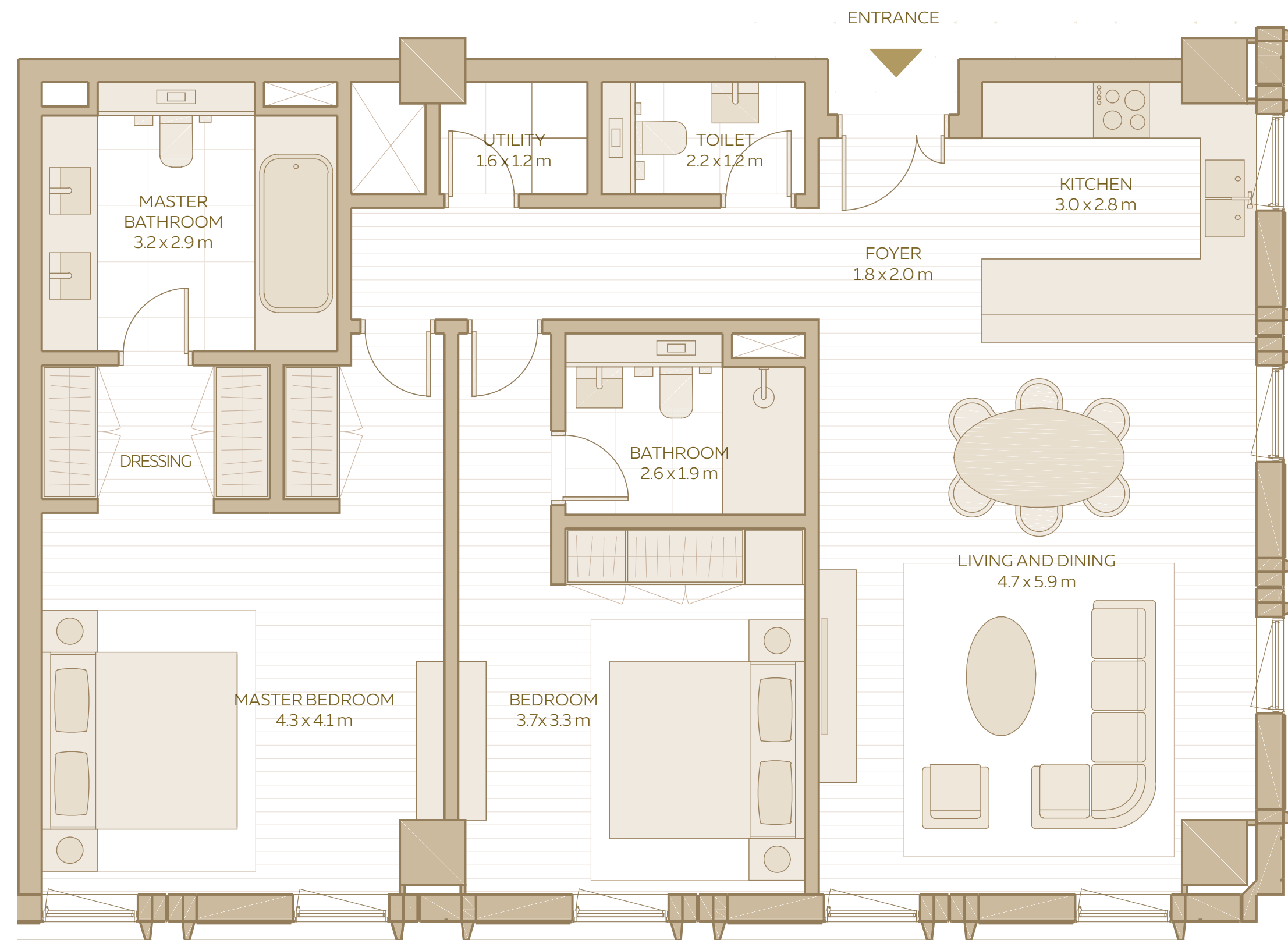
DISCLAIMER: 1. All room dimensions are in metres to the nearest decimal place, measured to structural elements, and exclude wall finishes and construction tolerances. 2. All dimensions have been provided by our consultant architects. 3. Areas are exclusive of partition walls, risers and terraces. 4. All materials, dimensions, drawings, features and amenities are approximate at the time of printing. 5. Actual area may vary from stated area. 6. Drawings not to scale E&OE. 7. Unit plans may exist in mirrored versions. 8. The developer reserves the right to make revisions to the floor plans and any features, materials, dimensions, drawings and amenities mentioned on this plan and in the brochure without notice.

AL WAHA

10 - UNIT PLANS



## 2-BEDROOM APARTMENT (TYPE 1)



## 2-BEDROOM APARTMENT TYPE 1

AREA RANGE:  
116.04 SQM - 128.86 SQM  
1249.04 SQFT - 1384.78 SQFT

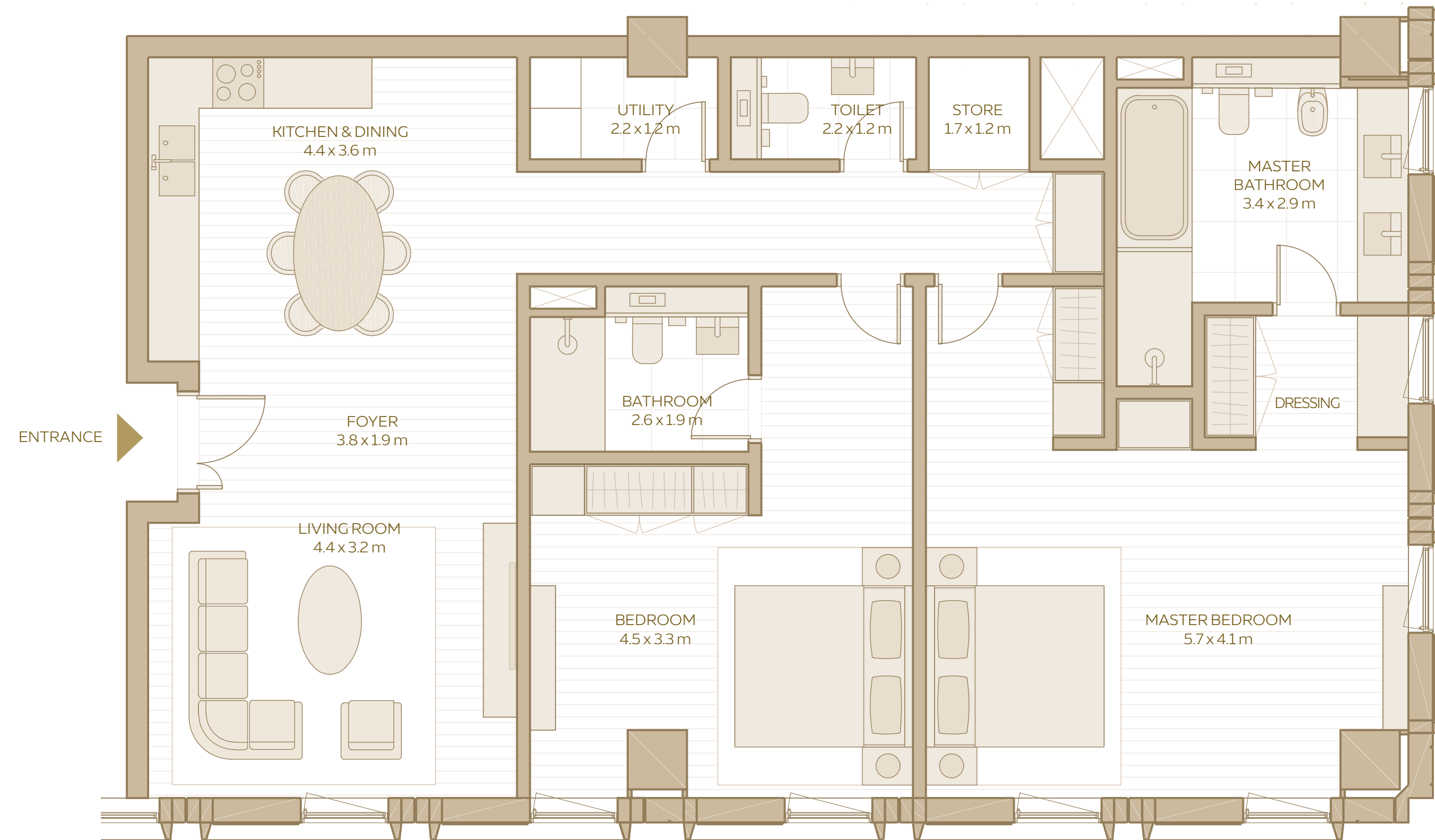


DISCLAIMER: 1. All room dimensions are in metres to the nearest decimal place, measured to structural elements, and exclude wall finishes and construction tolerances. 2. All dimensions have been provided by our consultant architects. 3. Areas are exclusive of partition walls, risers and terraces. 4. All materials, dimensions, drawings, features and amenities are approximate at the time of printing. 5. Actual area may vary from stated area. 6. Drawings not to scale E&OE. 7. Unit plans may exist in mirrored versions. 8. The developer reserves the right to make revisions to the floor plans and any features, materials, dimensions, drawings and amenities mentioned on this plan and in the brochure without notice.

AL WAHA

11 – UNIT PLANS

## 2-BEDROOM APARTMENT (TYPE 2)



## 2-BEDROOM APARTMENT TYPE 2

AREA RANGE:  
133.21 SQM - 134.04 SQM  
1433.86 SQFT - 1442.79 SQFT



DISCLAIMER: 1. All room dimensions are in metres to the nearest decimal place, measured to structural elements, and exclude wall finishes and construction tolerances. 2. All dimensions have been provided by our consultant architects. 3. Areas are exclusive of partition walls, risers and terraces. 4. All materials, dimensions, drawings, features and amenities are approximate at the time of printing. 5. Actual area may vary from stated area. 6. Drawings not to scale E&OE. 7. Unit plans may exist in mirrored versions. 8. The developer reserves the right to make revisions to the floor plans and any features, materials, dimensions, drawings and amenities mentioned on this plan and in the brochure without notice.

AL WAHA

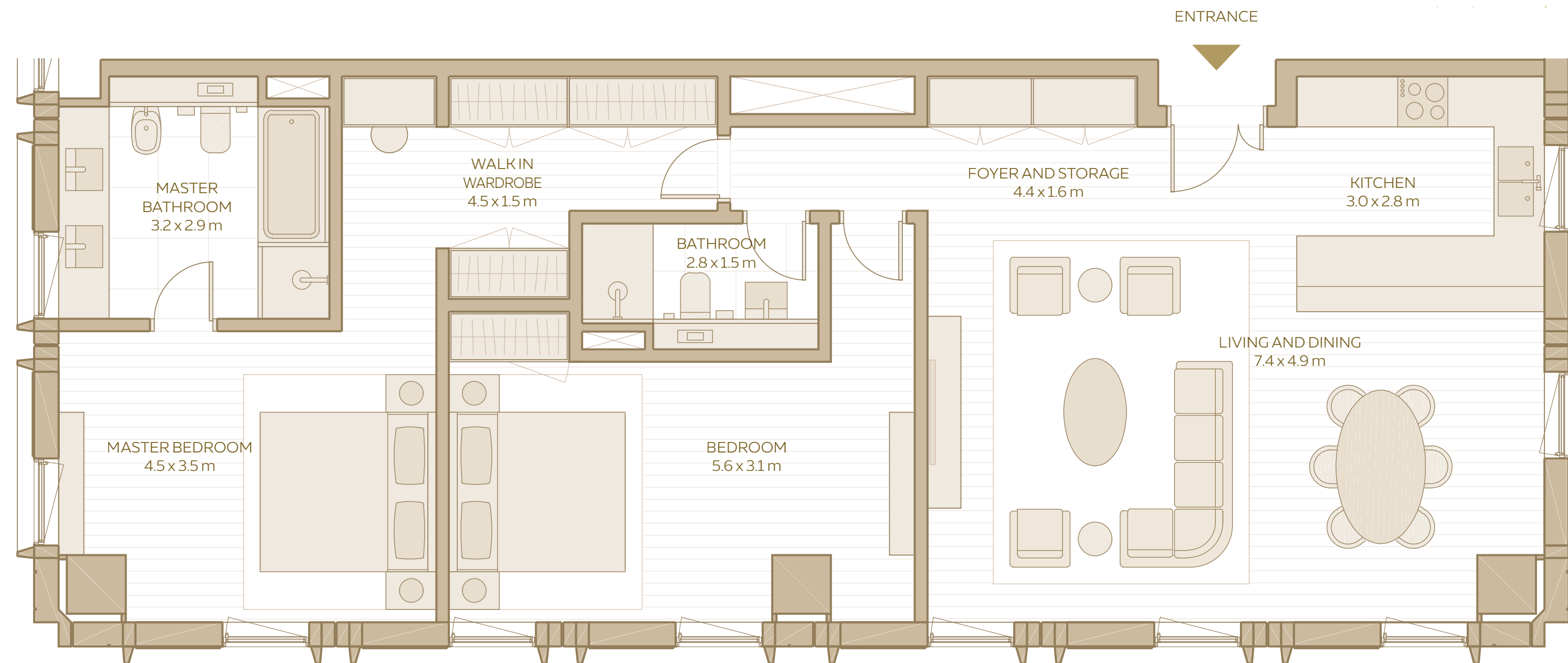
12 - UNIT PLANS



## 2-BEDROOM APARTMENT (TYPE 3)

## 2-BEDROOM APARTMENT TYPE 3

AREA RANGE:  
118.62 SQM - 120.86 SQM  
1276.82 SQFT - 1300.93 SQFT



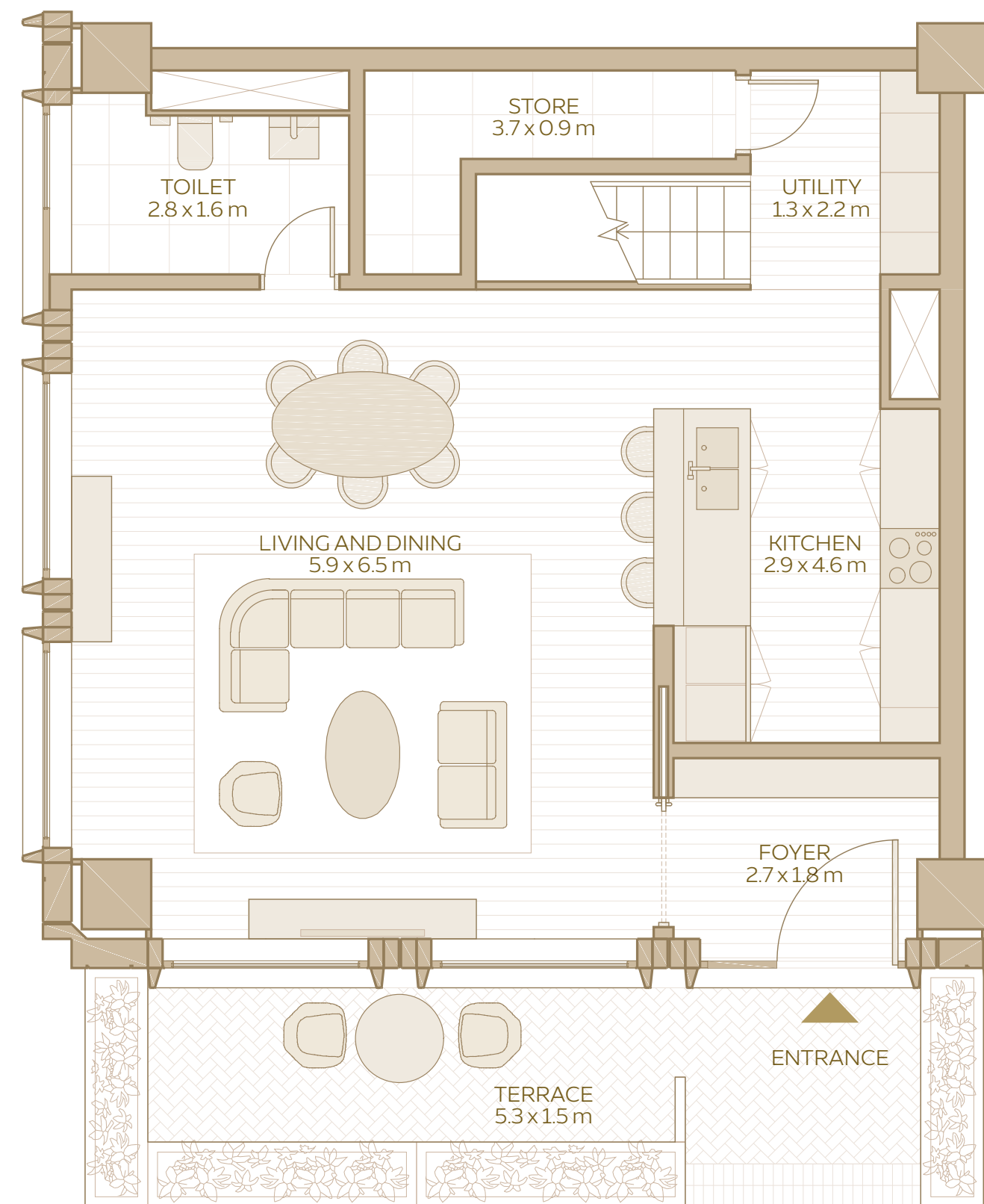
DISCLAIMER: 1. All room dimensions are in metres to the nearest decimal place, measured to structural elements, and exclude wall finishes and construction tolerances. 2. All dimensions have been provided by our consultant architects. 3. Areas are exclusive of partition walls, risers and terraces. 4. All materials, dimensions, drawings, features and amenities are approximate at the time of printing. 5. Actual area may vary from stated area. 6. Drawings not to scale E&OE. 7. Unit plans may exist in mirrored versions. 8. The developer reserves the right to make revisions to the floor plans and any features, materials, dimensions, drawings and amenities mentioned on this plan and in the brochure without notice.

AL WAHA

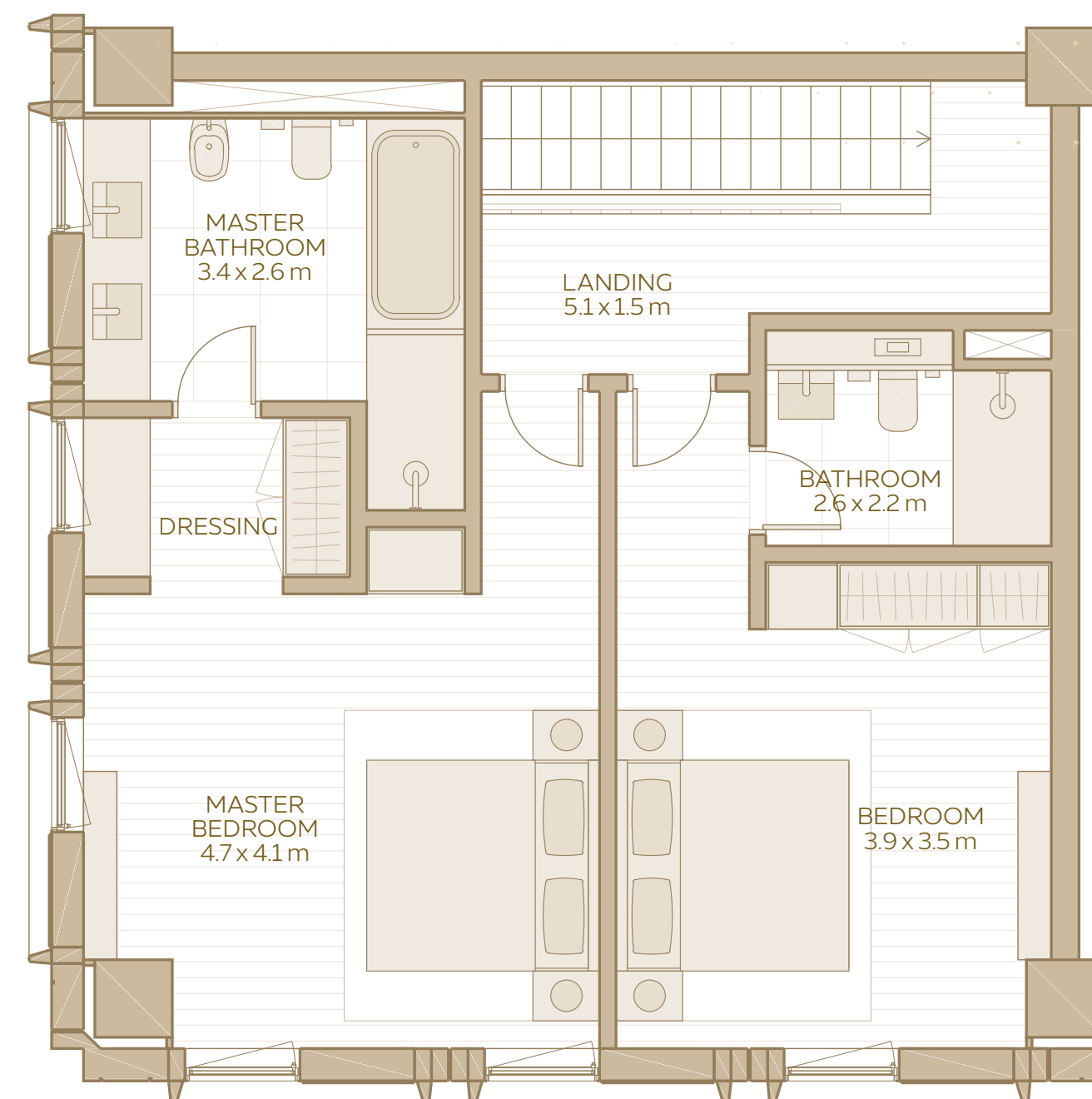
13 - UNIT PLANS



2-BEDROOM LOFT (CORNER)  
GROUND FLOOR



2-BEDROOM LOFT (CORNER)  
FIRST FLOOR



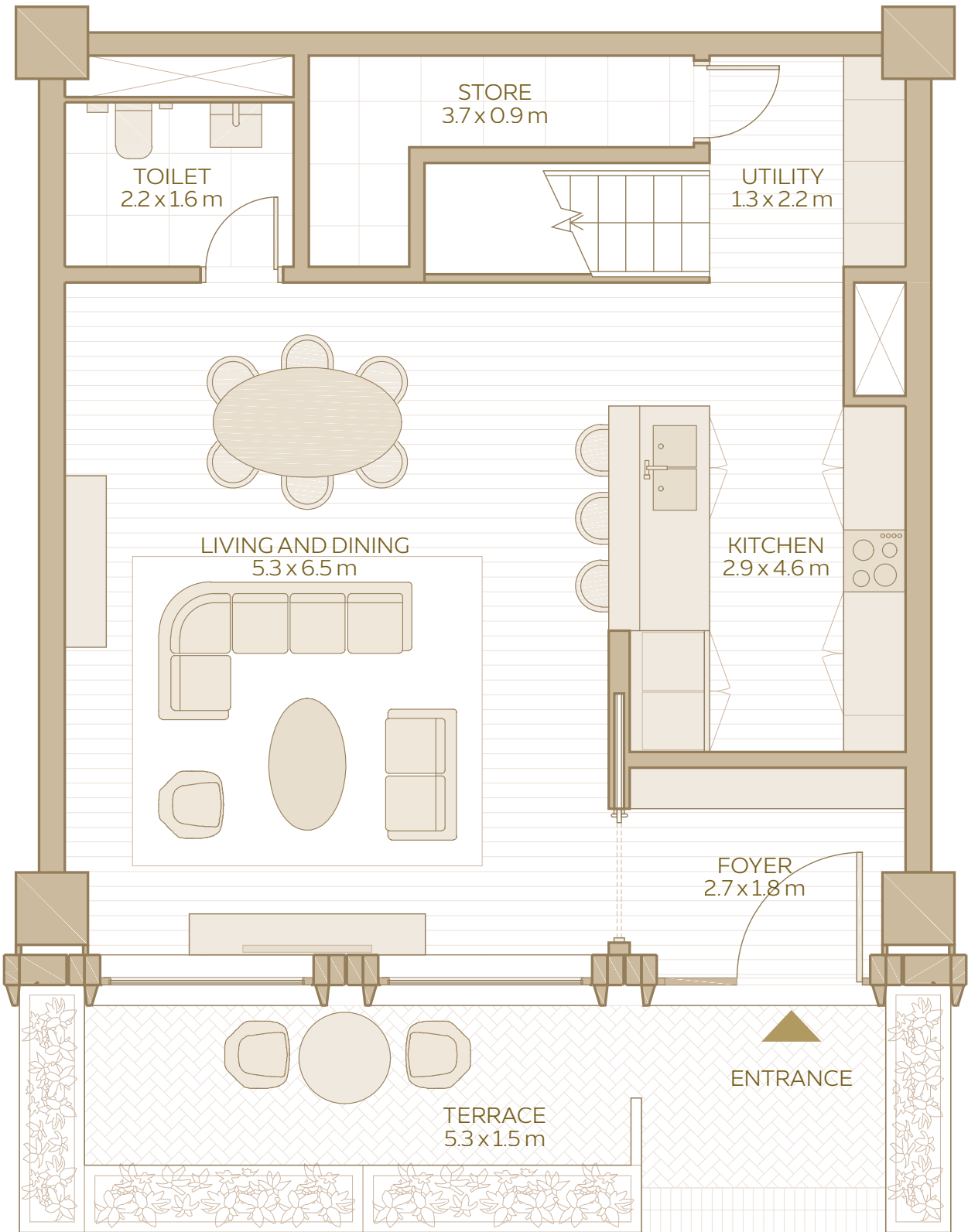
## 2-BEDROOM LOFT CORNER TYPE

AREA RANGE:  
155.07 SQM - 159.64 SQM  
1669.16 SQFT - 1718.35 SQFT

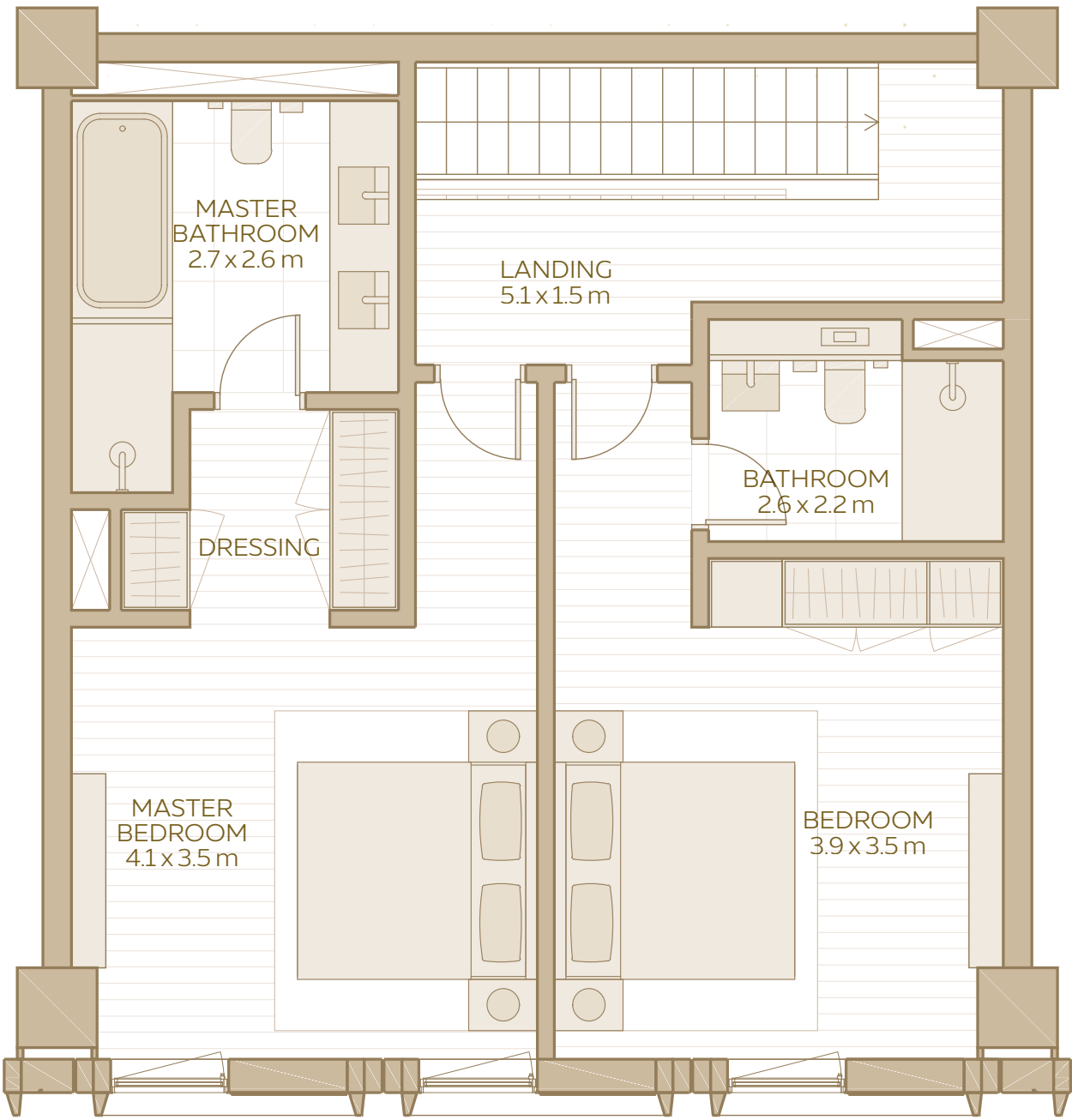
TERRACE:  
7.95 SQM / 85.6 SQFT



2-BEDROOM LOFT (MIDDLE)  
GROUND FLOOR



2-BEDROOM LOFT (MIDDLE)  
FIRST FLOOR



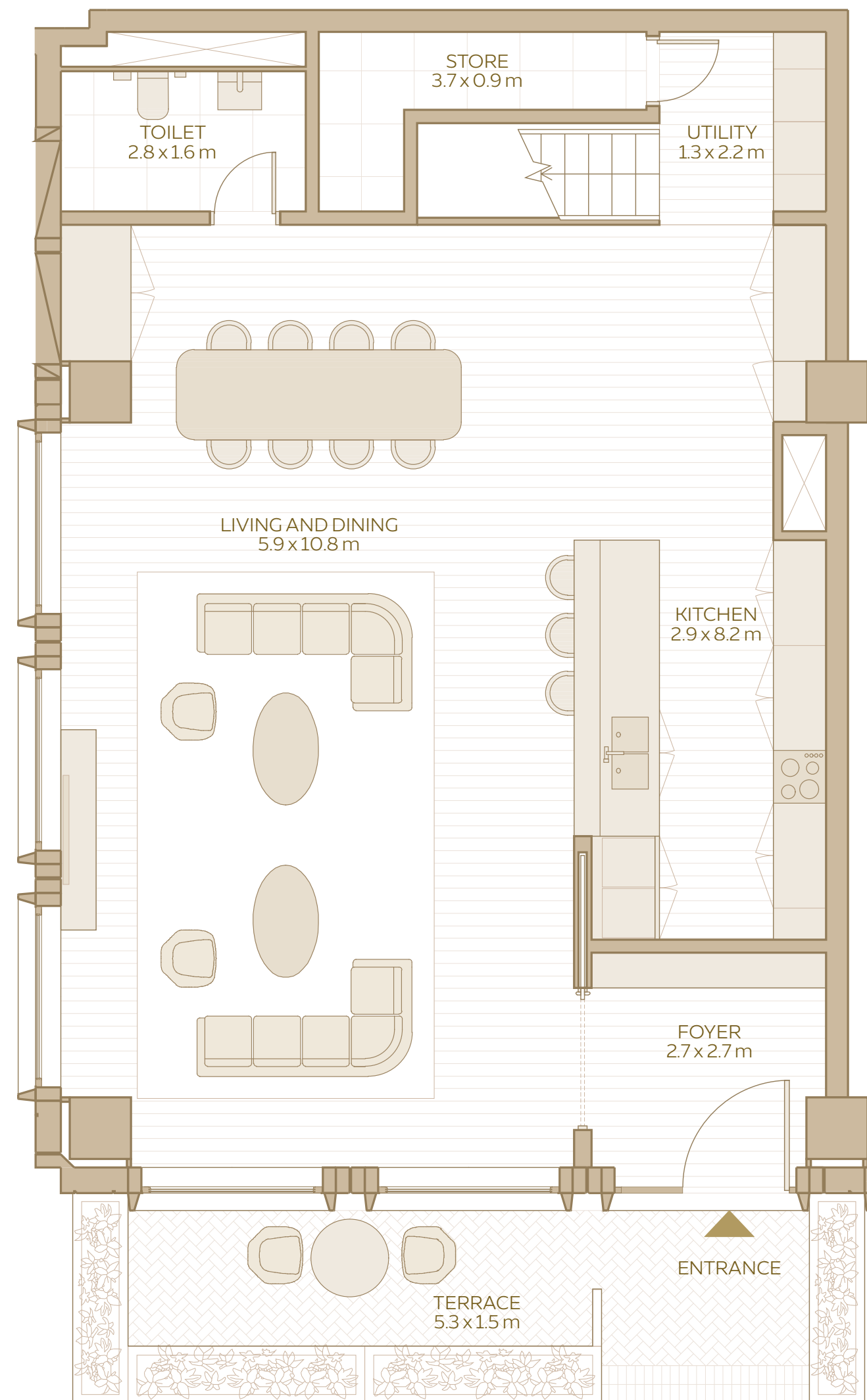
## 2-BEDROOM LOFT MIDDLE TYPE

AREA RANGE:  
147.76 SQM - 148.13 SQM  
1590.48 SQFT - 1594.46 SQFT

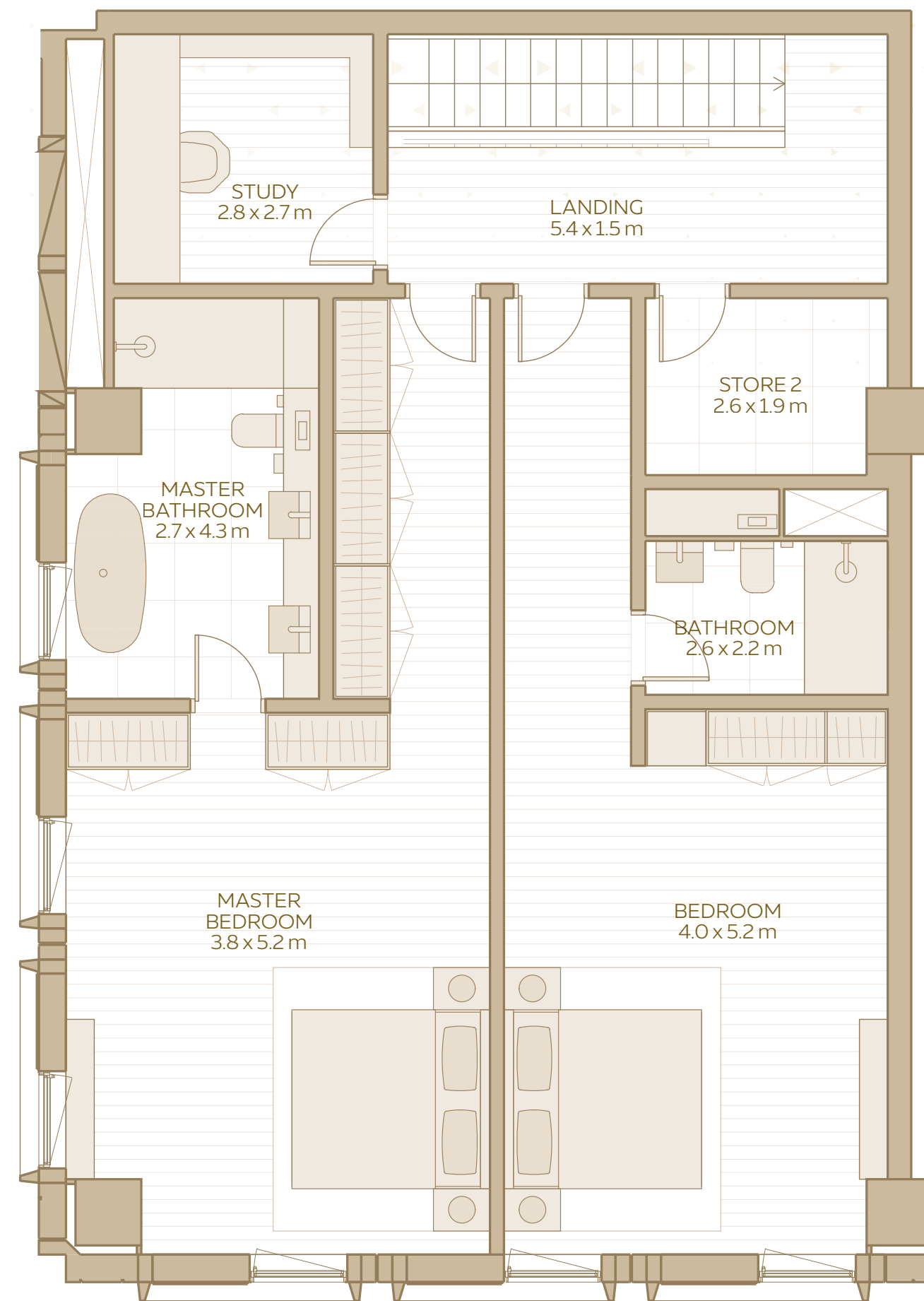
TERRACE:  
7.95 SQM / 85.6 SQFT



## 2-BEDROOM LOFT (ELONGATED) GROUND FLOOR



## 2-BEDROOM LOFT (ELONGATED) FIRST FLOOR



## 2-BEDROOM LOFT ELONGATED TYPE

**AREA RANGE:**  
223.58 SQM - 234.10 SQM  
2406.60 SQFT - 2519.83 SQFT

**TERRACE:**  
7.95 SQM / 85.6 SQFT



DISCLAIMER: 1. All room dimensions are in metres to the nearest decimal place, measured to structural elements, and exclude wall finishes and construction tolerances. 2. All dimensions have been provided by our consultant architects. 3. Areas are exclusive of partition walls, risers and terraces. 4. All materials, dimensions, drawings, features and amenities are approximate at the time of printing. 5. Actual area may vary from stated area. 6. Drawings not to scale E&OE. 7. Unit plans may exist in mirrored versions. 8. The developer reserves the right to make revisions to the floor plans and any features, materials, dimensions, drawings and amenities mentioned on this plan and in the brochure without notice.

AL WAHA

16 - UNIT PLANS