

# STUDIO / TYPE 01

Second Floor	201-210
Sixth Floor	601,606,607,612
Tenth Floor	1001,1006,1007,1012
Fourteenth Floor	1401,1406,1407,1412
Eighteenth Floor	1801,1806,1807,1812
Twenty-Second Floor	2201,2206,2207,2212

## INTERNAL LIVING AREA

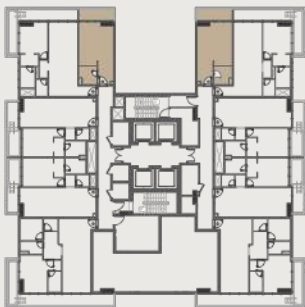
314.84ft<sup>2</sup>

## OUTDOOR LIVING AREA

75.56ft<sup>2</sup>

## TOTAL LIVING AREA

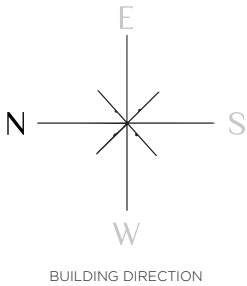
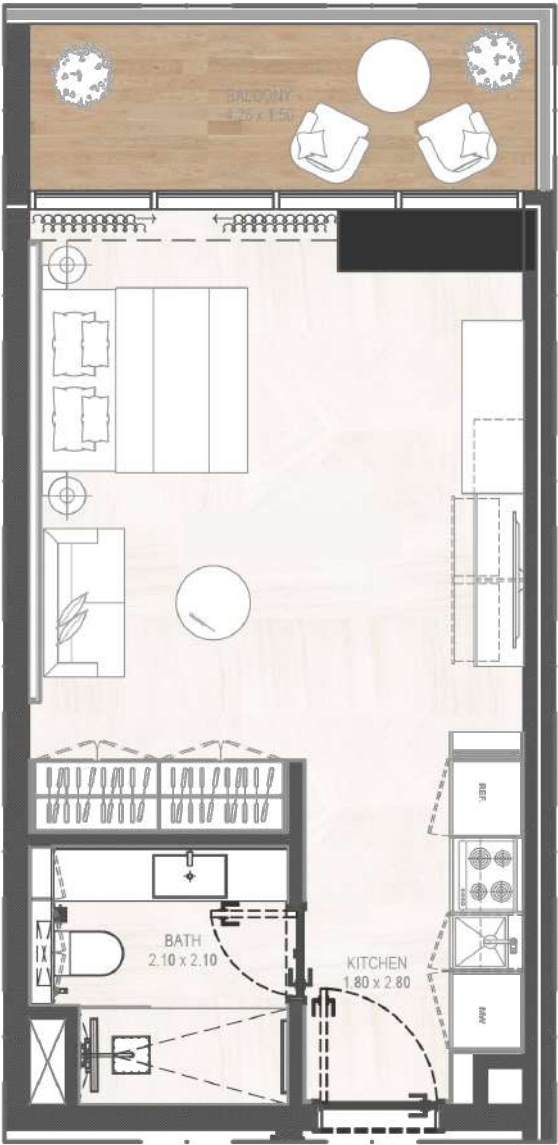
390.41ft<sup>2</sup>



Second Floor



Twenty-Second Floor



**Disclaimer:** 1. All room dimensions are measured to structural elements and exclude wall finishes and construction tolerances. 2. All dimensions have been provided by our consultant architects. 3. All materials, dimensions and drawings are approximate. Information is subject to change without notice. 4. Actual suite area may vary from the stated area. Drawings not to scale. The developer reserves the right to make revisions. 5. Calculation of suite area is measured as the area bounded by the centre line of demising or partition walls separating one unit from another unit, the exterior face of all exterior walls, and the exterior face of the corridor wall enclosing the adjoining unit. 6. Calculation of balcony area is measured as the area bounded by the centre line of demising or partition walls separating one unit from another unit, the outmost face of the enclosing guard and the external face of the adjoining balcony. 7. The units are measured at typical floor in the building. Columns may vary in size depending on the floor level. 8. For each unit type, unit sizes and details might be slightly different. Please refer to the sales and purchase agreement for the actual size of each specific unit.

# STUDIO / TYPE 02

Fourth Floor	403,404,409,410
Eighth Floor	803,804,809,810
Twelfth Floor	1203,1204,1209,1210
Sixteenth Floor	1603,1604,1609,1610
Twentieth Floor	2003,2004,2009,2010
Twenty-Fourth Floor	2403,2404,2409,2410

## INTERNAL LIVING AREA

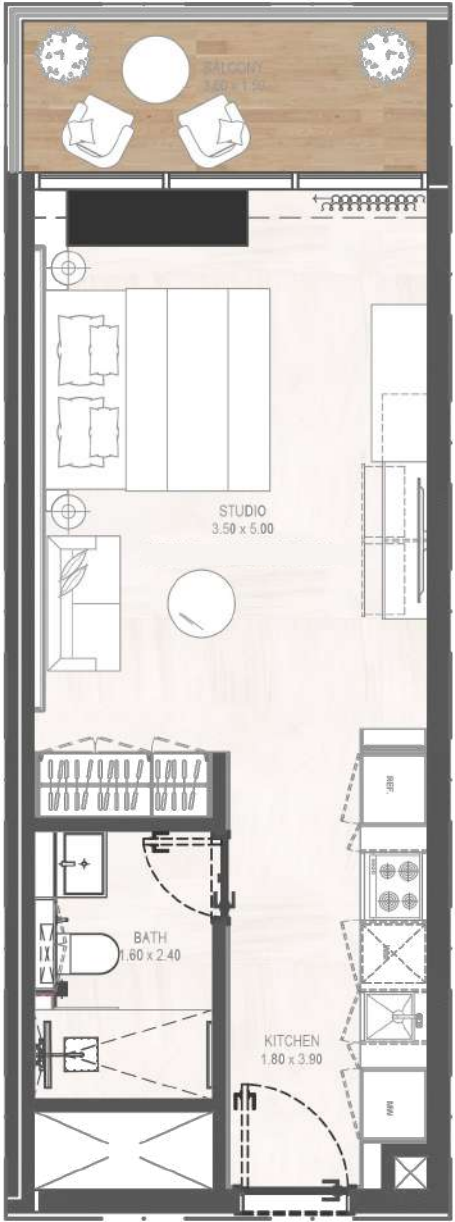
336.37ft<sup>2</sup>

## OUTDOOR LIVING AREA

72.01ft<sup>2</sup>

## TOTAL LIVING AREA

408.38ft<sup>2</sup>



**Disclaimer:** 1. All room dimensions are measured to structural elements and exclude wall finishes and construction tolerances. 2. All dimensions have been provided by our consultant architects. 3. All materials, dimensions and drawings are approximate. Information is subject to change without notice. 4. Actual suite area may vary from the stated area. Drawings not to scale. The developer reserves the right to make revisions. 5. Calculation of suite area is measured as the area bounded by the centre line of demising or partition walls separating one unit from another unit, the exterior face of all exterior walls, and the exterior face of the corridor wall enclosing the adjoining unit. 6. Calculation of balcony area is measured as the area bounded by the centre line of demising or partition walls separating one unit from another unit, the outmost face of the enclosing guard and the external face of the adjoining balcony. 7. The units are measured at typical floor in the building. Columns may vary in size depending on the floor level. 8. For each unit type, unit sizes and details might be slightly different. Please refer to the sales and purchase agreement for the actual size of each specific unit.

# 1BHK / TYPE 01

Second Floor	205,206
--------------	---------

## INTERNAL LIVING AREA

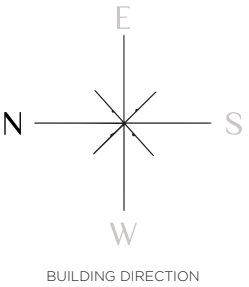
794.81ft<sup>2</sup>

## OUTDOOR LIVING AREA

295.15ft<sup>2</sup>

## TOTAL LIVING AREA

1089.95ft<sup>2</sup>



**Disclaimer:** 1. All room dimensions are measured to structural elements and exclude wall finishes and construction tolerances. 2. All dimensions have been provided by our consultant architects. 3. All materials, dimensions and drawings are approximate. Information is subject to change without notice. 4. Actual suite area may vary from the stated area. Drawings not to scale. The developer reserves the right to make revisions. 5. Calculation of suite area is measured as the area bounded by the centre line of demising or partition walls separating one unit from another unit, the exterior face of all exterior walls, and the exterior face of the corridor wall enclosing the adjoining unit. 6. Calculation of balcony area is measured as the area bounded by the centre line of demising or partition walls separating one unit from another unit, the outmost face of the enclosing guard and the external face of the adjoining balcony. 7. The units are measured at typical floor in the building. Columns may vary in size depending on the floor level. 8. For each unit type, unit sizes and details might be slightly different. Please refer to the sales and purchase agreement for the actual size of each specific unit.

# 1BHK / TYPE 02

Second Floor	203-204-207-208
Fifth Floor	502,503,506,507
Sixth Floor	603,604,609,610
Ninth Floor	902,903,906,907
Tenth Floor	1003,1004,1009,1010
Thirteenth Floor	1302,1303,1306,1307
Fourteenth Floor	1403,1404,1409,1410
Seventeenth Floor	1702,1703,1706,1707
Eighteenth Floor	1803,1804,1809,1810
Twenty-first Floor	2102,2103,2106,2107
Twenty-Second Floor	2203,2204,2209,2210

## INTERNAL LIVING AREA

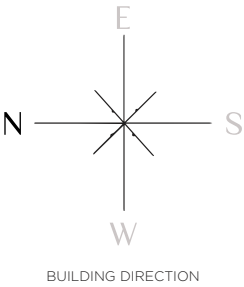
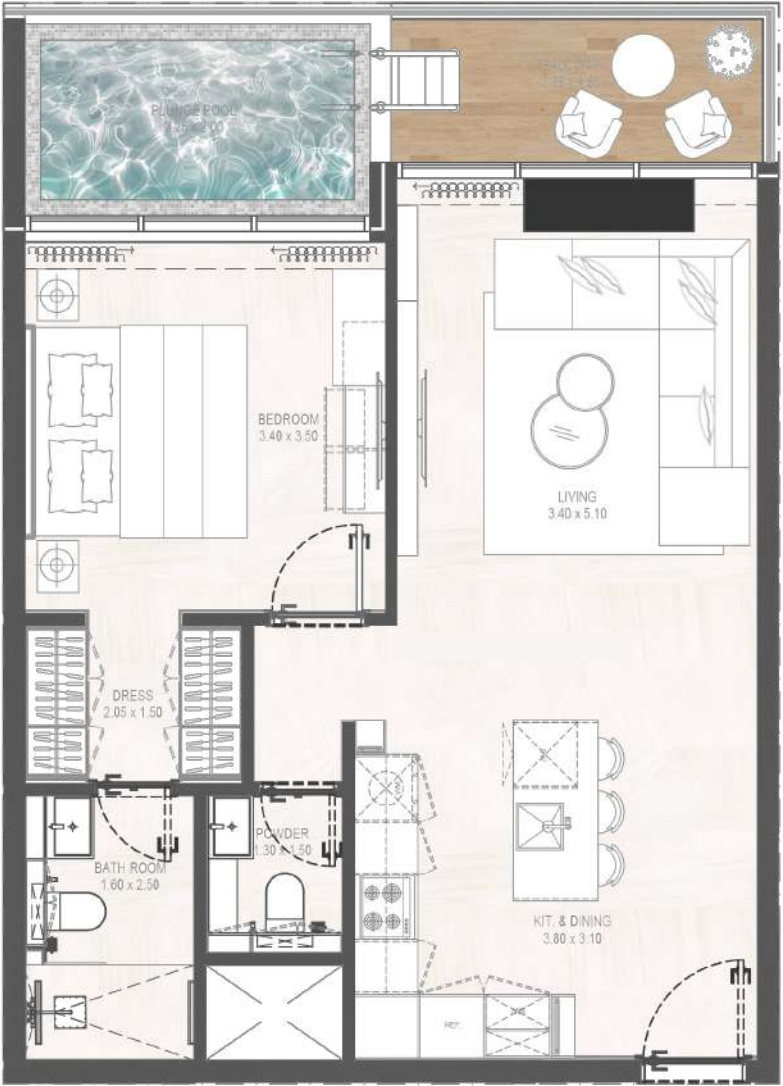
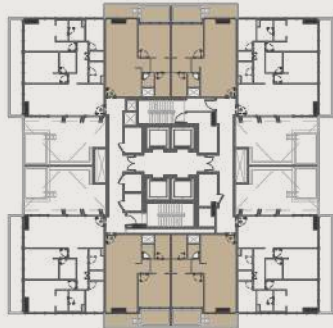
623.02ft<sup>2</sup>

## OUTDOOR LIVING AREA

122.17ft<sup>2</sup>

## TOTAL LIVING AREA

745.19ft<sup>2</sup>



**Disclaimer:** 1. All room dimensions are measured to structural elements and exclude wall finishes and construction tolerances. 2. All dimensions have been provided by our consultant architects. 3. All materials, dimensions and drawings are approximate. Information is subject to change without notice. 4. Actual suite area may vary from the stated area. Drawings not to scale. The developer reserves the right to make revisions. 5. Calculation of suite area is measured as the area bounded by the centre line of demising or partition walls separating one unit from another unit, the exterior face of all exterior walls, and the exterior face of the corridor wall enclosing the adjoining unit. 6. Calculation of balcony area is measured as the area bounded by the centre line of demising or partition walls separating one unit from another unit, the outmost face of the enclosing guard and the external face of the adjoining balcony. 7. The units are measured at typical floor in the building. Columns may vary in size depending on the floor level. 8. For each unit type, unit sizes and details might be slightly different. Please refer to the sales and purchase agreement for the actual size of each specific unit.

# 1BHK / TYPE 03

Second Floor	202-209
Sixth Floor	602,605,608,611
Tenth Floor	1002,1005,1008,1011
Fourteenth Floor	1402,1405,1408,1411
Eighteenth Floor	1802,1805,1808,1811
Twenty-Second Floor	2202,2205,2208,2211

## INTERNAL LIVING AREA

650.14ft<sup>2</sup>

## OUTDOOR LIVING AREA

210.87ft<sup>2</sup>

## TOTAL LIVING AREA

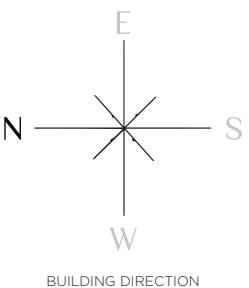
861.01ft<sup>2</sup>



Second Floor



Sixth Floor  
Tenth Floor  
Fourteenth Floor  
Eighteenth Floor  
Twenty-Second Floor



**Disclaimer:** 1. All room dimensions are measured to structural elements and exclude wall finishes and construction tolerances. 2. All dimensions have been provided by our consultant architects. 3. All materials, dimensions and drawings are approximate. Information is subject to change without notice. 4. Actual suite area may vary from the stated area. Drawings not to scale. The developer reserves the right to make revisions. 5. Calculation of suite area is measured as the area bounded by the centre line of demising or partition walls separating one unit from another unit, the exterior face of all exterior walls, and the exterior face of the corridor wall enclosing the adjoining unit. 6. Calculation of balcony area is measured as the area bounded by the centre line of demising or partition walls separating one unit from another unit, the outmost face of the enclosing guard and the external face of the adjoining balcony. 7. The units are measured at typical floor in the building. Columns may vary in size depending on the floor level. 8. For each unit type, unit sizes and details might be slightly different. Please refer to the sales and purchase agreement for the actual size of each specific unit.



# 1BHK / TYPE 04

Third Floor	301,304,305,308
Seventh Floor	701,704,705,708
Eleventh Floor	1101,1104,1105,1108
Fifteenth Floor	1501,1504,1505,1508
Nineteenth Floor	1901,1904,1905,1908
Twenty-Third Floor	2301,2304,2305,2308

## INTERNAL LIVING AREA

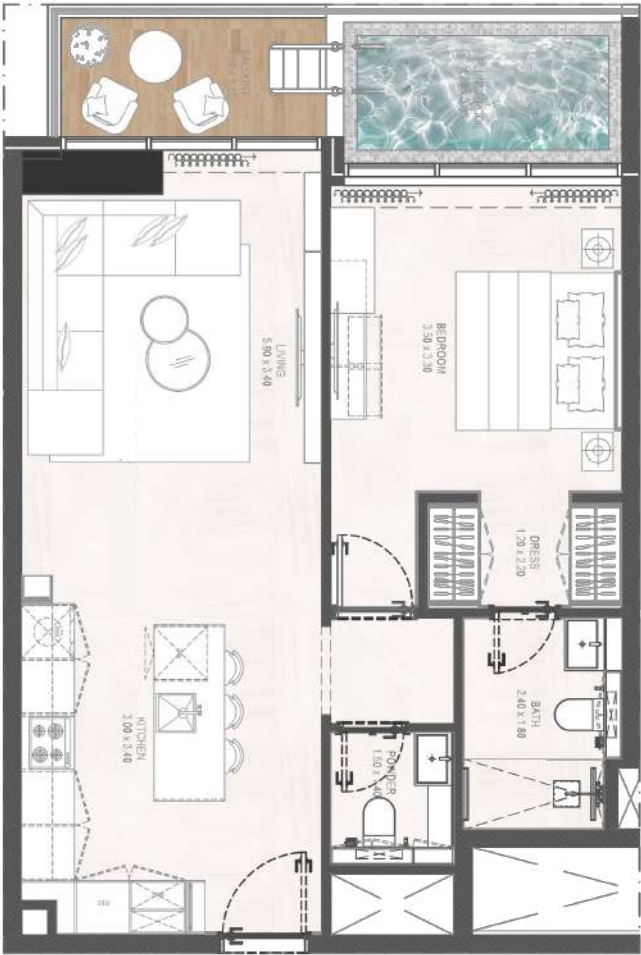
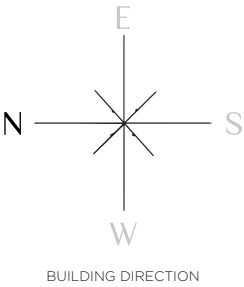
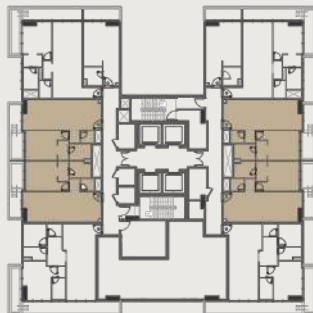
613.76ft<sup>2</sup>

## OUTDOOR LIVING AREA

134.23ft<sup>2</sup>

## TOTAL LIVING AREA

747.98ft<sup>2</sup>



**Disclaimer:** 1. All room dimensions are measured to structural elements and exclude wall finishes and construction tolerances. 2. All dimensions have been provided by our consultant architects. 3. All materials, dimensions and drawings are approximate. Information is subject to change without notice. 4. Actual suite area may vary from the stated area. Drawings not to scale. The developer reserves the right to make revisions. 5. Calculation of suite area is measured as the area bounded by the centre line of demising or partition walls separating one unit from another unit, the exterior face of all exterior walls, and the exterior face of the corridor wall enclosing the adjoining unit. 6. Calculation of balcony area is measured as the area bounded by the centre line of demising or partition walls separating one unit from another unit, the outmost face of the enclosing guard and the external face of the adjoining balcony. 7. The units are measured at typical floor in the building. Columns may vary in size depending on the floor level. 8. For each unit type, unit sizes and details might be slightly different. Please refer to the sales and purchase agreement for the actual size of each specific unit.

# 1BHK / TYPE 05

Fourth Floor	401,406,407,412
Eighth Floor	801,806,807,812
Twelfth Floor	1201,1206,1207,1212
Sixteenth Floor	1601,1606,1607,1612
Twentieth Floor	2001,2006,2007,2012
Twenty-Fourth Floor	2401,2406,2407,2412

## INTERNAL LIVING AREA

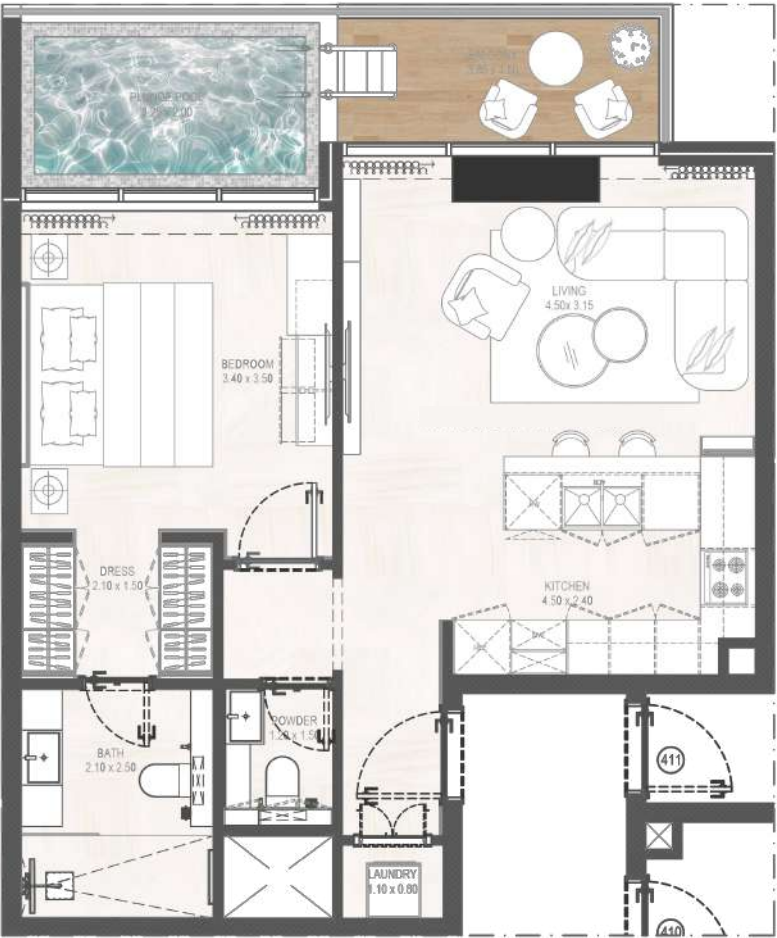
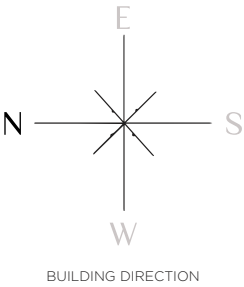
604.39ft<sup>2</sup>

## OUTDOOR LIVING AREA

134.01ft<sup>2</sup>

## TOTAL LIVING AREA

738.40ft<sup>2</sup>



**Disclaimer:** 1. All room dimensions are measured to structural elements and exclude wall finishes and construction tolerances. 2. All dimensions have been provided by our consultant architects. 3. All materials, dimensions and drawings are approximate. Information is subject to change without notice. 4. Actual suite area may vary from the stated area. Drawings not to scale. The developer reserves the right to make revisions. 5. Calculation of suite area is measured as the area bounded by the centre line of demising or partition walls separating one unit from another unit, the exterior face of all exterior walls, and the exterior face of the corridor wall enclosing the adjoining unit. 6. Calculation of balcony area is measured as the area bounded by the centre line of demising or partition walls separating one unit from another unit, the outmost face of the enclosing guard and the external face of the adjoining balcony. 7. The units are measured at typical floor in the building. Columns may vary in size depending on the floor level. 8. For each unit type, unit sizes and details might be slightly different. Please refer to the sales and purchase agreement for the actual size of each specific unit.

# 1BHK / TYPE 06

Fourth Floor	402,405,408,411
Eighth Floor	802,805,808,811
Twelfth Floor	1202,1205,1208,1211
Sixteenth Floor	1602,1605,1608,1611
Twentieth Floor	2002,2005,2008,2011
Twenty-Fourth Floor	2402,2405,2408,2411

## INTERNAL LIVING AREA

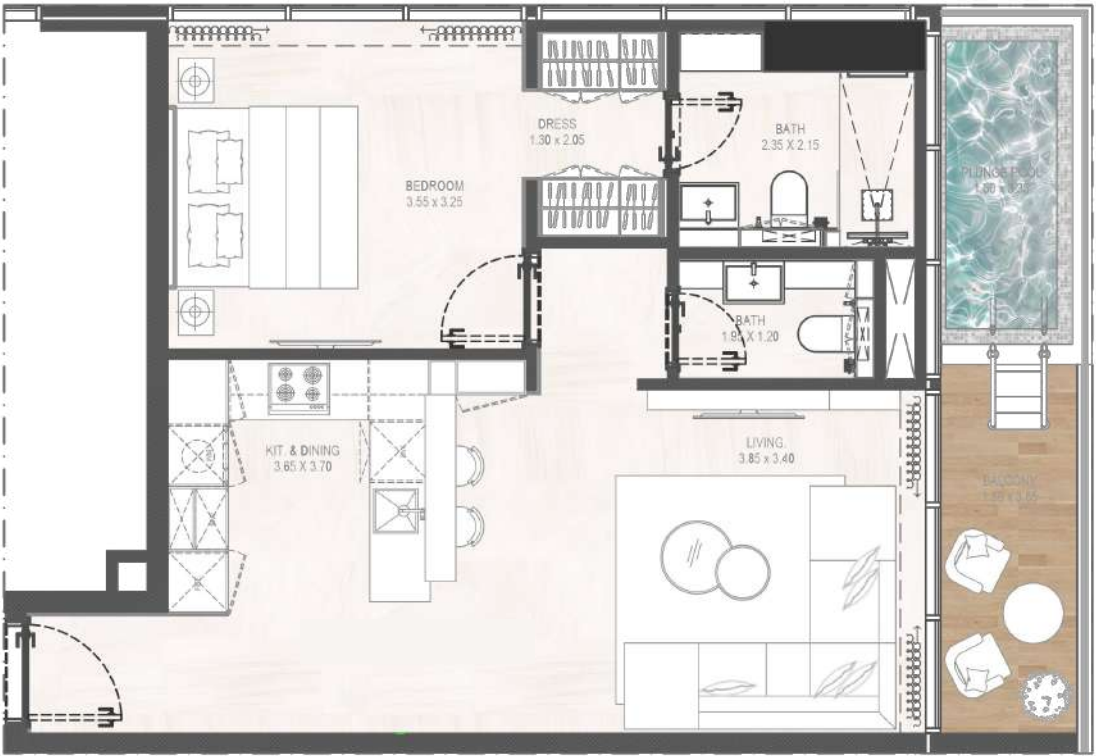
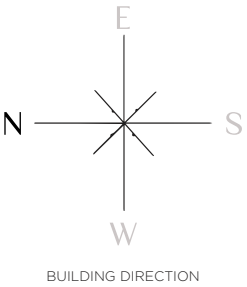
593.41ft<sup>2</sup>

## OUTDOOR LIVING AREA

123.46ft<sup>2</sup>

## TOTAL LIVING AREA

716.88ft<sup>2</sup>



**Disclaimer:** 1. All room dimensions are measured to structural elements and exclude wall finishes and construction tolerances. 2. All dimensions have been provided by our consultant architects. 3. All materials, dimensions and drawings are approximate. Information is subject to change without notice. 4. Actual suite area may vary from the stated area. Drawings not to scale. The developer reserves the right to make revisions. 5. Calculation of suite area is measured as the area bounded by the centre line of demising or partition walls separating one unit from another unit, the exterior face of all exterior walls, and the exterior face of the corridor wall enclosing the adjoining unit. 6. Calculation of balcony area is measured as the area bounded by the centre line of demising or partition walls separating one unit from another unit, the outmost face of the enclosing guard and the external face of the adjoining balcony. 7. The units are measured at typical floor in the building. Columns may vary in size depending on the floor level. 8. For each unit type, unit sizes and details might be slightly different. Please refer to the sales and purchase agreement for the actual size of each specific unit.



# 2BHK / TYPE 01

Fifth Floor	501,504,505,508
Nineth Floor	901,904,905,908
Thirteenth Floor	1301,1304,1305,1308
Seventeenth Floor	1701,1704,1705,1708
Twenty-first Floor	2101,2104,2105,2108

## INTERNAL LIVING AREA

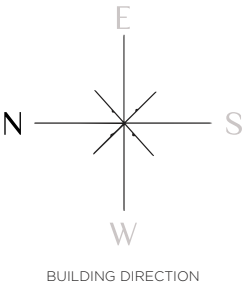
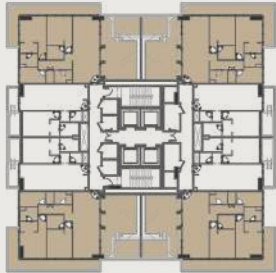
988.99ft<sup>2</sup>

## OUTDOOR LIVING AREA

748.74ft<sup>2</sup>

## TOTAL LIVING AREA

1737.73ft<sup>2</sup>



**Disclaimer:** 1. All room dimensions are measured to structural elements and exclude wall finishes and construction tolerances. 2. All dimensions have been provided by our consultant architects. 3. All materials, dimensions and drawings are approximate. Information is subject to change without notice. 4. Actual suite area may vary from the stated area. Drawings not to scale. The developer reserves the right to make revisions. 5. Calculation of suite area is measured as the area bounded by the centre line of demising or partition walls separating one unit from another unit, the exterior face of all exterior walls, and the exterior face of the corridor wall enclosing the adjoining unit. 6. Calculation of balcony area is measured as the area bounded by the centre line of demising or partition walls separating one unit from another unit, the outmost face of the enclosing guard and the external face of the adjoining balcony. 7. The units are measured at typical floor in the building. Columns may vary in size depending on the floor level. 8. For each unit type, unit sizes and details might be slightly different. Please refer to the sales and purchase agreement for the actual size of each specific unit.

# 2BHK / TYPE 02

Third Floor	302,303,306,307
Seventh Floor	702,703,706,707
Eleventh Floor	1102,1103,1106,1107
Fifteenth Floor	1502,1503,1506,1507
Nineteenth Floor	1902,1903,1906,1907
Twenty-Third Floor	2302,2303,2306,2307

## INTERNAL LIVING AREA

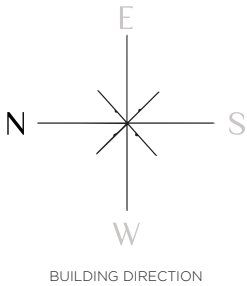
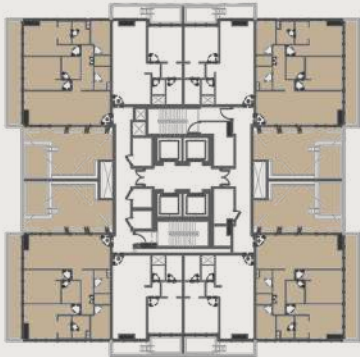
955.73ft<sup>2</sup>

## OUTDOOR LIVING AREA

666.82ft<sup>2</sup>

## TOTAL LIVING AREA

1622.55ft<sup>2</sup>



**Disclaimer:** 1. All room dimensions are measured to structural elements and exclude wall finishes and construction tolerances. 2. All dimensions have been provided by our consultant architects. 3. All materials, dimensions and drawings are approximate. Information is subject to change without notice. 4. Actual suite area may vary from the stated area. Drawings not to scale. The developer reserves the right to make revisions. 5. Calculation of suite area is measured as the area bounded by the centre line of demising or partition walls separating one unit from another unit, the exterior face of all exterior walls, and the exterior face of the corridor wall enclosing the adjoining unit. 6. Calculation of balcony area is measured as the area bounded by the centre line of demising or partition walls separating one unit from another unit, the outmost face of the enclosing guard and the external face of the adjoining balcony. 7. The units are measured at typical floor in the building. Columns may vary in size depending on the floor level. 8. For each unit type, unit sizes and details might be slightly different. Please refer to the sales and purchase agreement for the actual size of each specific unit.

# PENTHOUSE

Twenty-Fifth Floor	2501-2502-2503-2504
--------------------	---------------------

INTERNAL LIVING AREA

2263.54ft<sup>2</sup>

OUTDOOR LIVING AREA

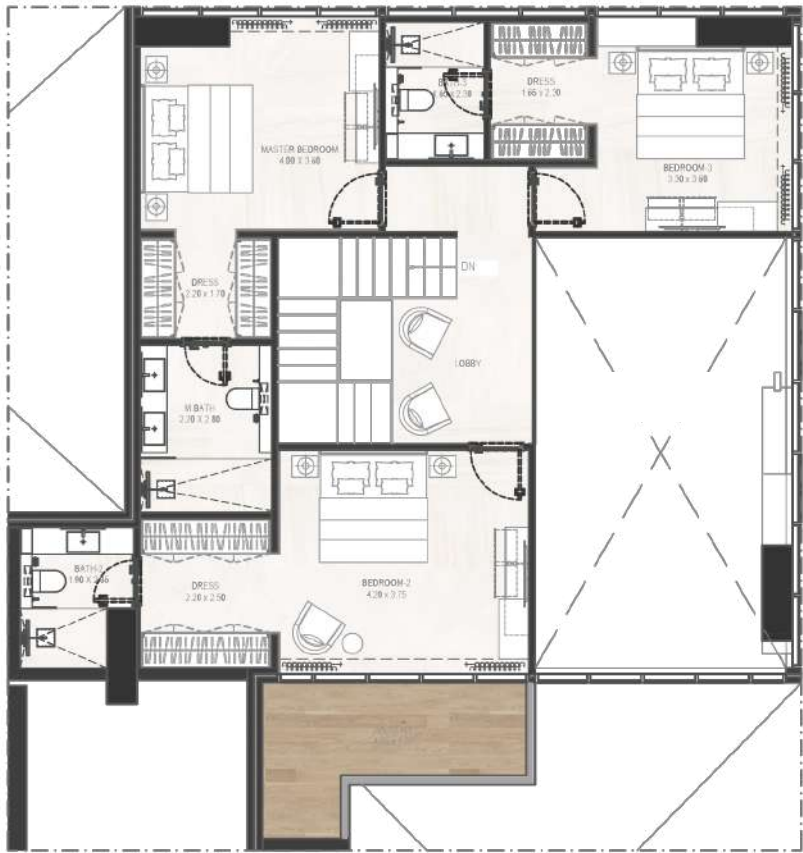
943.56ft<sup>2</sup>

TOTAL LIVING AREA

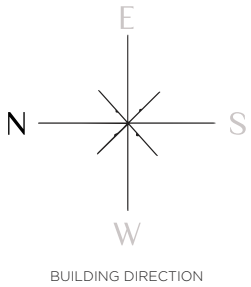
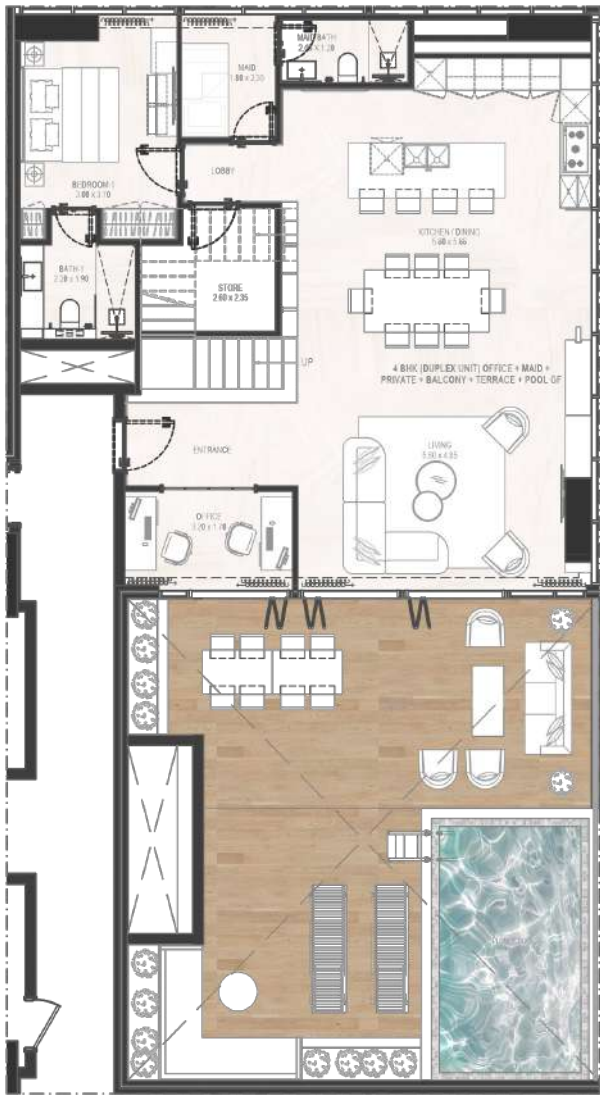
3207.11ft<sup>2</sup>



Roof Penthouse



Base Penthouse



**Disclaimer:** 1. All room dimensions are measured to structural elements and exclude wall finishes and construction tolerances. 2. All dimensions have been provided by our consultant architects. 3. All materials, dimensions and drawings are approximate. Information is subject to change without notice. 4. Actual suite area may vary from the stated area. Drawings not to scale. The developer reserves the right to make revisions. 5. Calculation of suite area is measured as the area bounded by the centre line of demising or partition walls separating one unit from another unit, the exterior face of all exterior walls, and the exterior face of the corridor wall enclosing the adjoining unit. 6. Calculation of balcony area is measured as the area bounded by the centre line of demising or partition walls separating one unit from another unit, the outmost face of the enclosing guard and the external face of the adjoining balcony. 7. The units are measured at typical floor in the building. Columns may vary in size depending on the floor level. 8. For each unit type, unit sizes and details might be slightly different. Please refer to the sales and purchase agreement for the actual size of each specific unit.