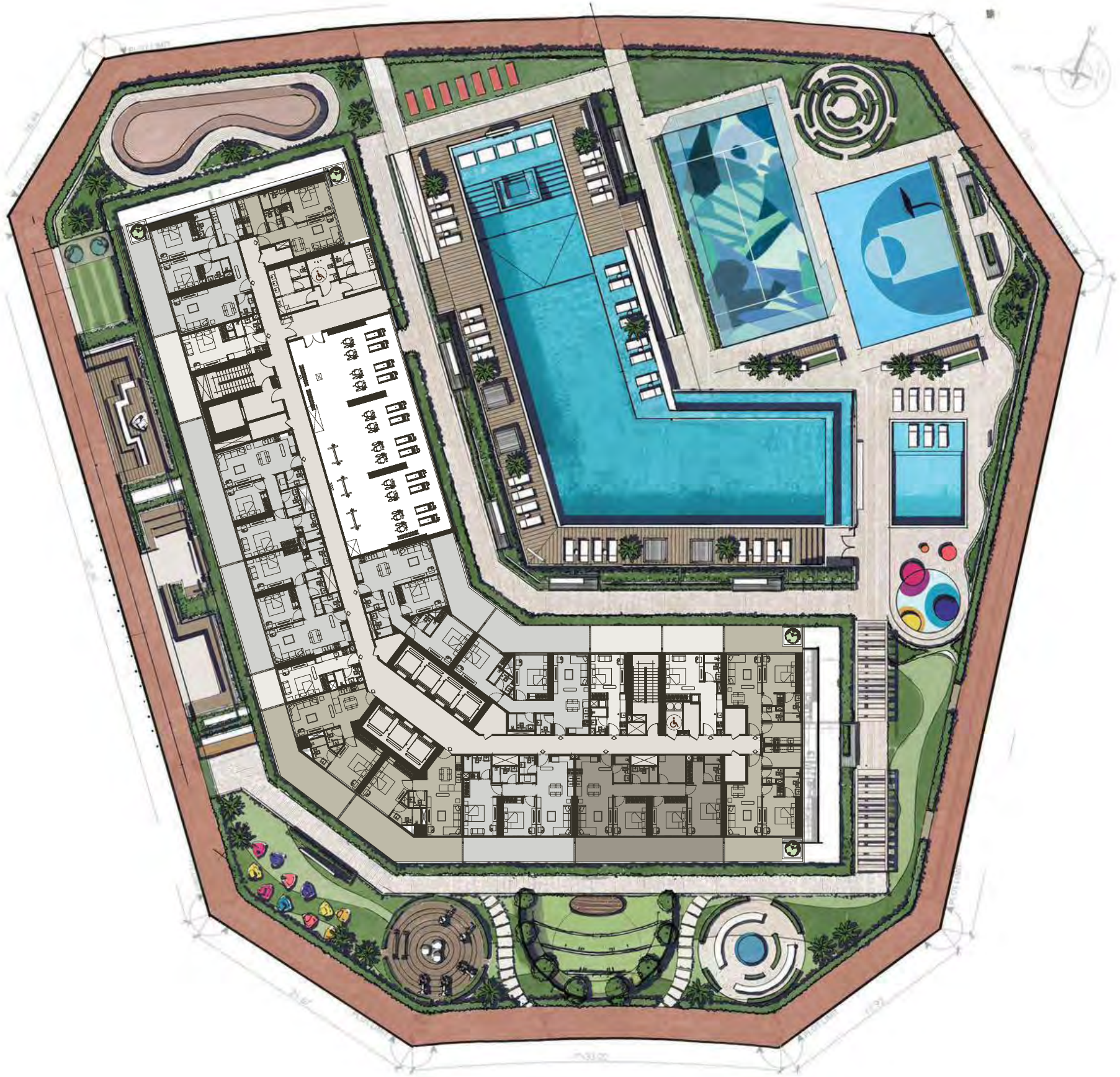


FLOOR PLAN

Discover a range of thoughtfully designed floor plans to suit your individual needs and lifestyle. From studios to expansive family residences, Haven offers a space for everyone.

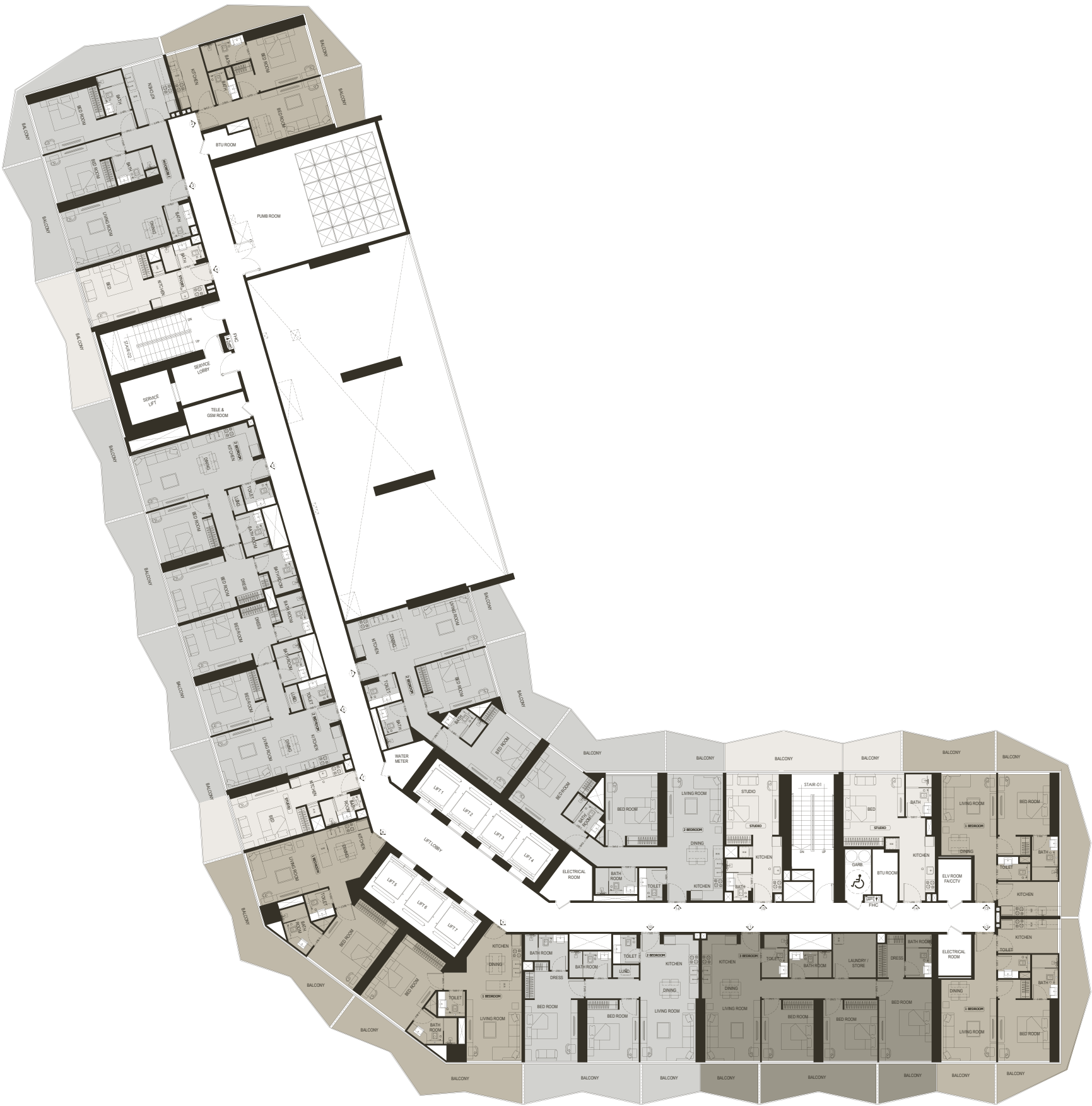
TYPICAL FLOOR PLAN
1ST FLOOR

STUDIO	
AVERAGE AREA WITHOUT BALCONY	300 - 380 ft²
AVERAGE AREA WITH BALCONY	385 - 551 ft²
1 BEDROOM	
AVERAGE AREA WITHOUT BALCONY	585 - 658 ft²
AVERAGE AREA WITH BALCONY	774 - 975 ft²
2 BEDROOM	
AVERAGE AREA WITHOUT BALCONY	903 - 988 ft²
AVERAGE AREA WITH BALCONY	1137 -1378 ft²
3 BEDROOM	
AVERAGE AREA WITHOUT BALCONY	1218 ft²
AVERAGE AREA WITH BALCONY	1557 - 1609 ft²



TYPICAL FLOOR PLAN
2ND FLOOR

STUDIO	
AVERAGE AREA WITHOUT BALCONY	300 - 380 ft²
AVERAGE AREA WITH BALCONY	385 - 551 ft²
1 BEDROOM	
AVERAGE AREA WITHOUT BALCONY	585 - 658 ft²
AVERAGE AREA WITH BALCONY	774 - 975 ft²
2 BEDROOM	
AVERAGE AREA WITHOUT BALCONY	903 - 988 ft²
AVERAGE AREA WITH BALCONY	1137 -1378 ft²
3 BEDROOM	
AVERAGE AREA WITHOUT BALCONY	1218 ft²
AVERAGE AREA WITH BALCONY	1557 - 1609 ft²

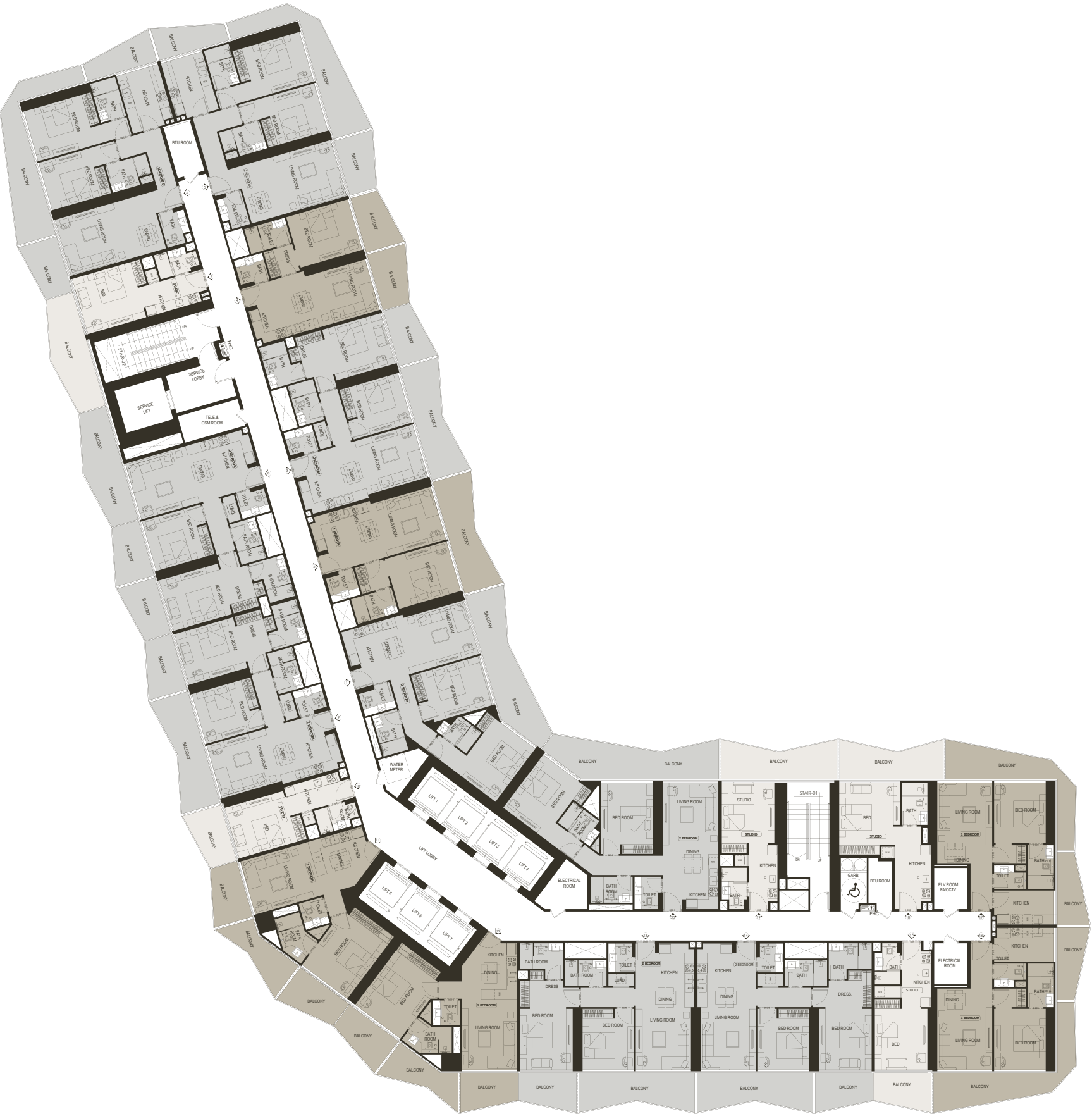


TYPICAL FLOOR PLAN

3RD - 15TH FLOOR

3 | 5 | 7 | 9 | 11 | 13 | 15

STUDIO	
AVERAGE AREA WITHOUT BALCONY	300 - 380 ft²
AVERAGE AREA WITH BALCONY	385 - 551 ft²
1 BEDROOM	
AVERAGE AREA WITHOUT BALCONY	585 - 658 ft²
AVERAGE AREA WITH BALCONY	774 - 975 ft²
2 BEDROOM	
AVERAGE AREA WITHOUT BALCONY	903 - 988 ft²
AVERAGE AREA WITH BALCONY	1137 -1378 ft²
3 BEDROOM	
AVERAGE AREA WITHOUT BALCONY	1218 ft²
AVERAGE AREA WITH BALCONY	1557 - 1609 ft²

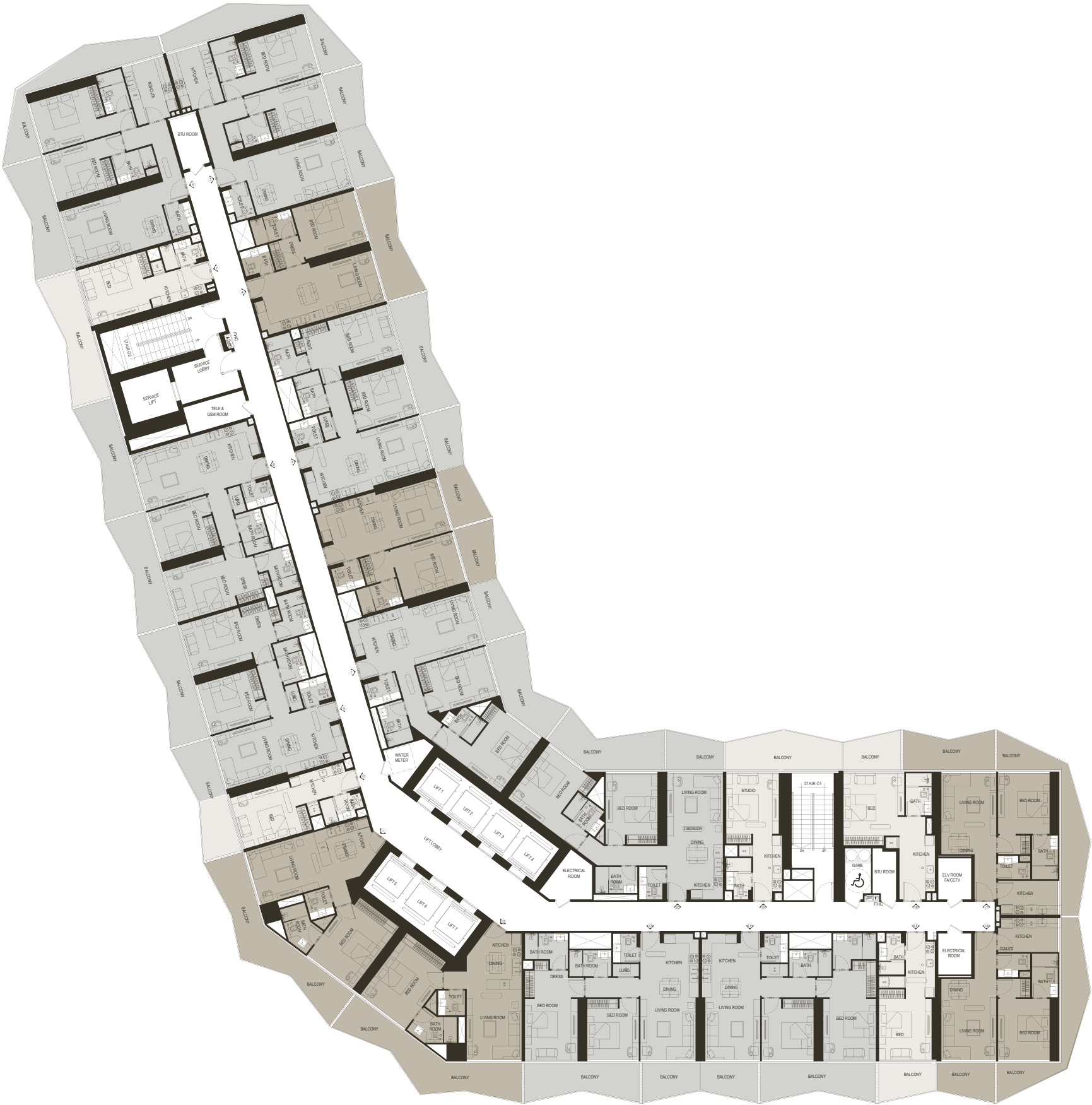


TYPICAL FLOOR PLAN

4TH - 14TH FLOOR

4 | 6 | 8 | 10 |12 | 14

STUDIO	
AVERAGE AREA WITHOUT BALCONY	300 - 380 ft²
AVERAGE AREA WITH BALCONY	385 - 551 ft²
1 BEDROOM	
AVERAGE AREA WITHOUT BALCONY	585 - 658 ft²
AVERAGE AREA WITH BALCONY	774 - 975 ft²
2 BEDROOM	
AVERAGE AREA WITHOUT BALCONY	903 - 988 ft²
AVERAGE AREA WITH BALCONY	1137 -1378 ft²
3 BEDROOM	
AVERAGE AREA WITHOUT BALCONY	1218 ft²
AVERAGE AREA WITH BALCONY	1557 - 1609 ft²



FLOOR PLAN

TYPICAL FLOOR PLAN 16TH - 26TH FLOOR

16 | 18 | 20 | 22 | 24 | 26

STUDIO

AVERAGE AREA WITHOUT BALCONY	300 - 380 ft ²
AVERAGE AREA WITH BALCONY	385 - 551 ft ²

1 BEDROOM

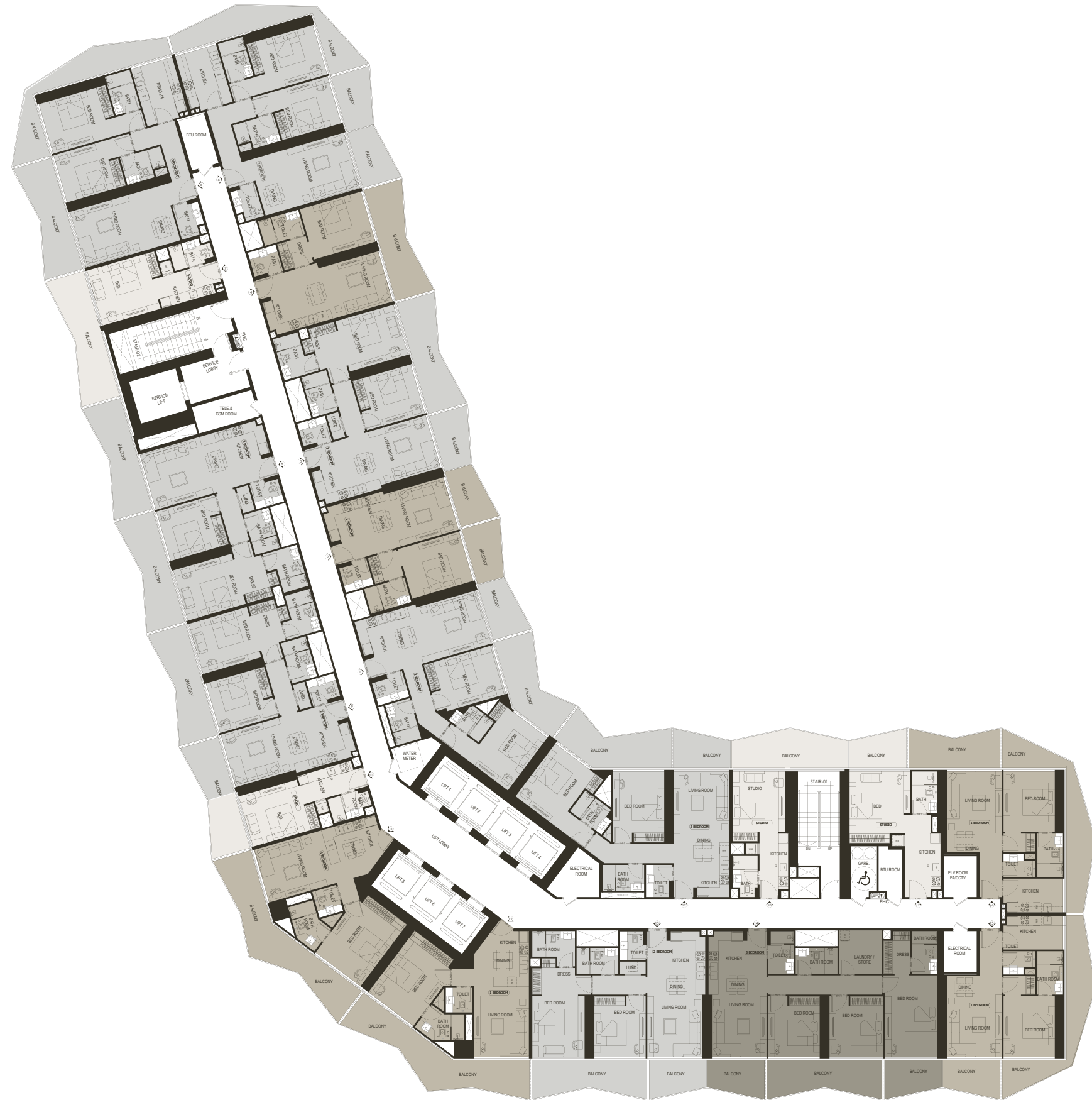
AVERAGE AREA WITHOUT BALCONY	585 - 658 ft ²
AVERAGE AREA WITH BALCONY	774 - 975 ft ²

2 BEDROOM

AVERAGE AREA WITHOUT BALCONY	903 - 988 ft²
AVERAGE AREA WITH BALCONY	1137 -1378 ft²

3 BEDROOM

AVERAGE AREA WITHOUT BALCONY	1218 ft²
AVERAGE AREA WITH BALCONY	1557 - 1609 ft²

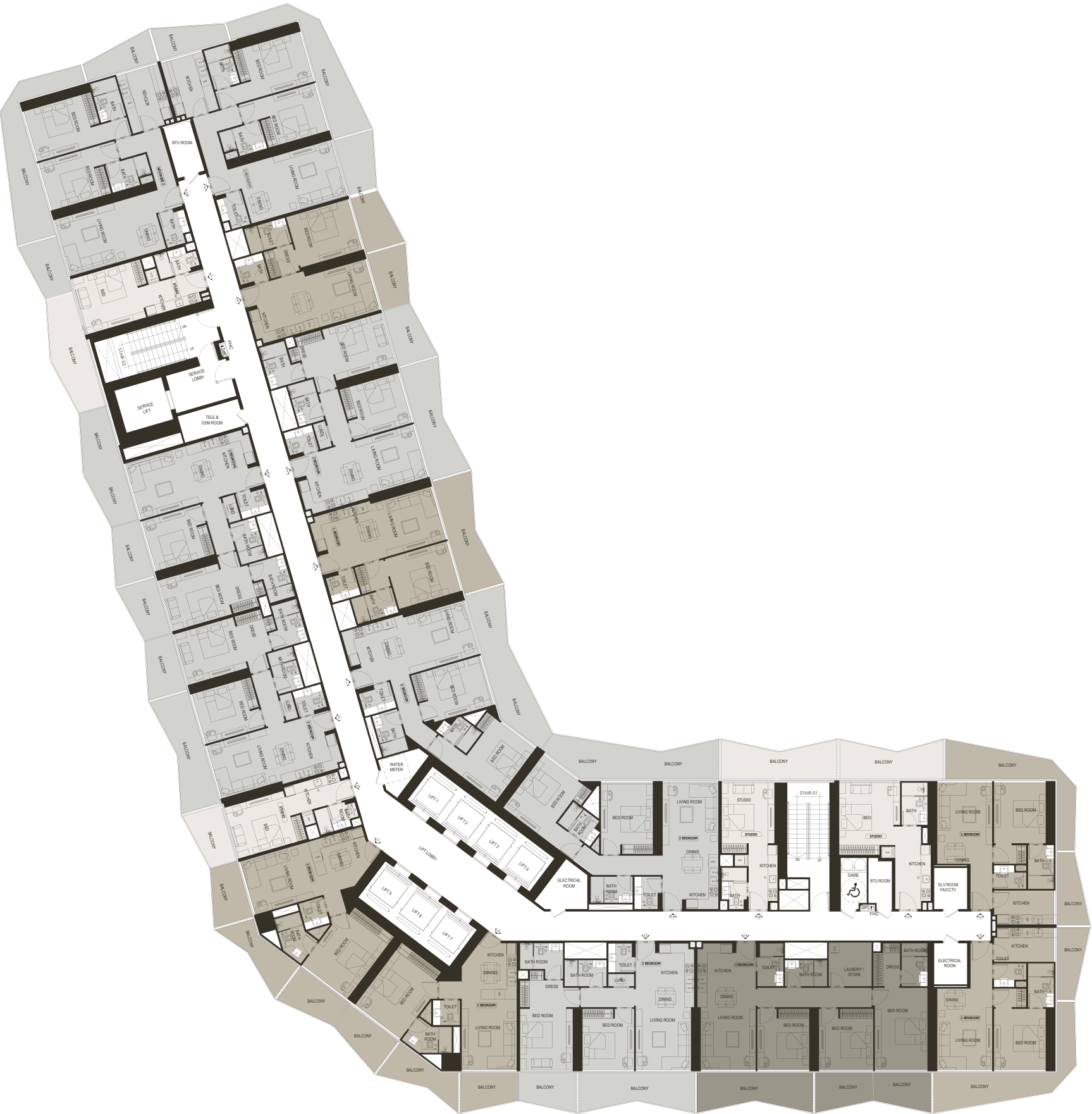


TYPICAL FLOOR PLAN

17TH - 25TH FLOOR

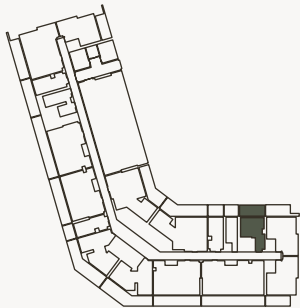
17 | 19 | 21 | 23 | 25

STUDIO	
AVERAGE AREA WITHOUT BALCONY	300 - 380 ft²
AVERAGE AREA WITH BALCONY	385 - 551 ft²
1 BEDROOM	
AVERAGE AREA WITHOUT BALCONY	585 - 658 ft²
AVERAGE AREA WITH BALCONY	774 - 975 ft²
2 BEDROOM	
AVERAGE AREA WITHOUT BALCONY	903 - 988 ft²
AVERAGE AREA WITH BALCONY	1137 -1378 ft²
3 BEDROOM	
AVERAGE AREA WITHOUT BALCONY	1218 ft²
AVERAGE AREA WITH BALCONY	1557 - 1609 ft²



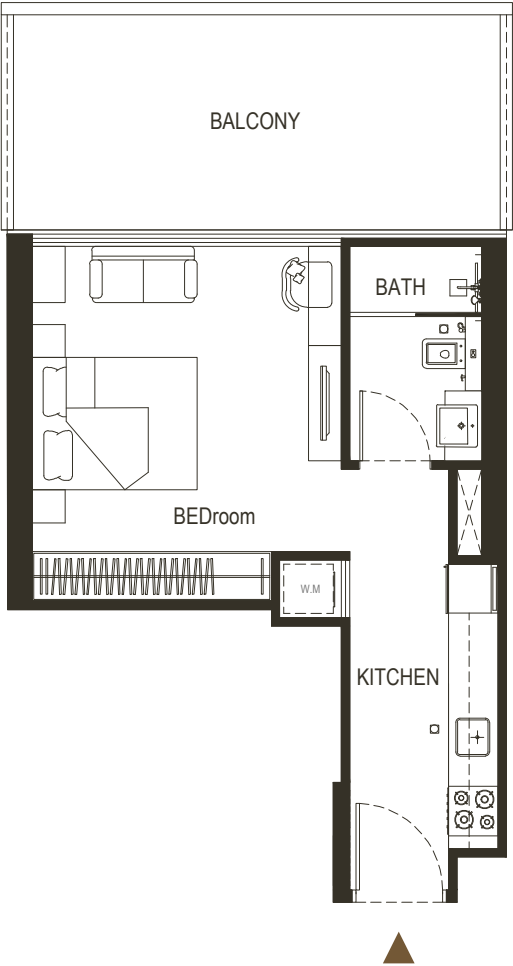
STUDIO

TYPE - 1



AREA	SQ.M	SQ.FT
SUITE AREA	35.35 m²	380 ft²
BALCONY AREA	26.21 m²	282.12 ft²
TOTAL UNIT AREA	61.56 m²	662.62 ft²

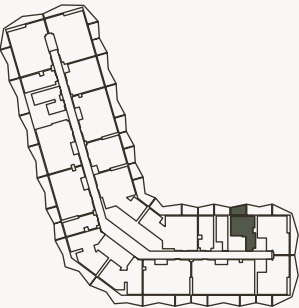
FLAT DESIGN COMPONENTS		
BATH	4 m²	
STUDIO	17 m²	
LAUNDRY	1 m²	
KITCHEN	7 m²	



Disclaimer: 1. All stated dimensions and services whether in relation to the building, common areas or individual units are subject to government and local authority approvals. Final dimensions and services will be stated in your sales and purchase agreement 2. All room dimensions are measured to structural elements and exclude wall finishes and construction tolerances. 3. All dimensions have been provided by our consultant architects. 4. All materials, dimensions and drawings are approximate. Information is subject to change without notice. 5. Actual suite area may vary from the stated area. Drawings are not to scale. The Developer reserves the right to make any revisions whatsoever including for aesthetic purposes.

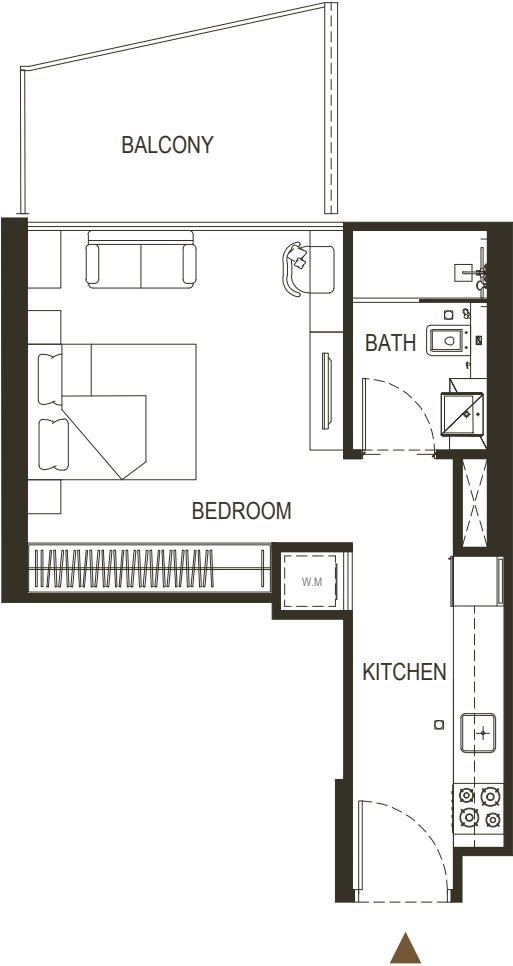
STUDIO

TYPE - 2



AREA	SQ.M	SQ.FT
SUITE AREA	35.18 m²	378.67 ft²
BALCONY AREA	16.03 m²	172.55 ft²
TOTAL UNIT AREA	51.21 m²	551.21 ft²

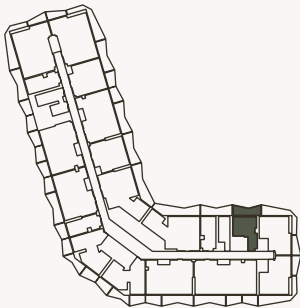
FLAT DESIGN COMPONENTS		
BATH	4 m²	
STUDIO	17 m²	
LAUNDRY	1 m²	
KITCHEN	7 m²	



6. Calculation of suite area is measured as the area bounded by the centre line of demising or partition walls separating one unit from another unit, the exterior face of all exterior walls, and the exterior face of the corridor wall enclosing the adjoining unit. 7. Calculation of balcony area is measured as the area bounded by the centre line of demising or partition walls separating one unit from another unit, the outmost face of the enclosing guard and the external face of the adjoining balcony. 8. The units are measured at typical floor in the building. Columns may vary in size depending on the floor level. 9. For each unit type, unit sizes and details might be different and your sales and purchase agreement will contain the actual size of each specific unit.

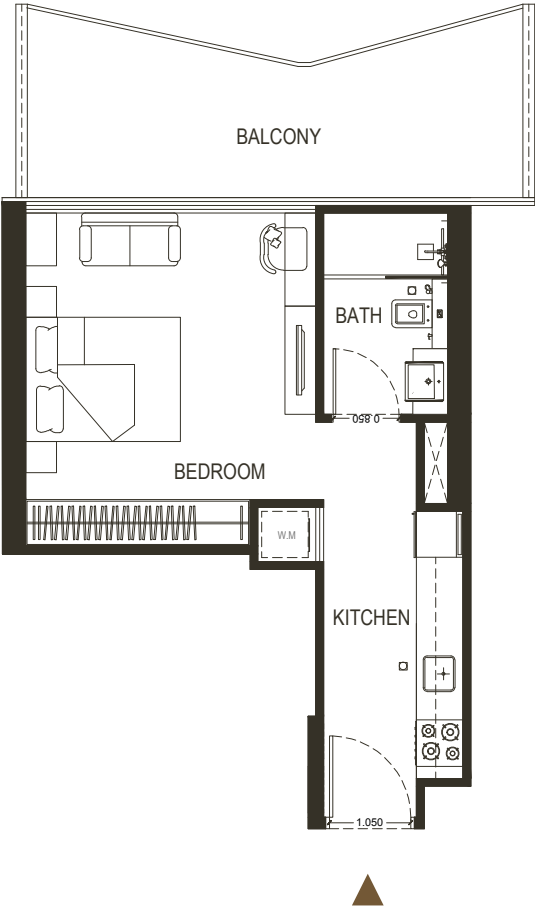
STUDIO

TYPE - 3



AREA	SQ.M	SQ.FT
SUITE AREA	35.24 m²	379.32 ft²
BALCONY AREA	14.47 m²	155.75 ft²
TOTAL UNIT AREA	49.71 m²	535.07 ft²

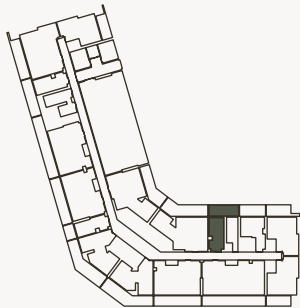
FLAT DESIGN COMPONENTS		
BATH	4 m²	
STUDIO	17 m²	
LAUNDRY	1 m²	
KITCHEN	7 m²	



Disclaimer: 1. All stated dimensions and services whether in relation to the building, common areas or individual units are subject to government and local authority approvals. Final dimensions and services will be stated in your sales and purchase agreement 2. All room dimensions are measured to structural elements and exclude wall finishes and construction tolerances. 3. All dimensions have been provided by our consultant architects. 4. All materials, dimensions and drawings are approximate. Information is subject to change without notice. 5. Actual suite area may vary from the stated area. Drawings are not to scale. The Developer reserves the right to make any revisions whatsoever including for aesthetic purposes.

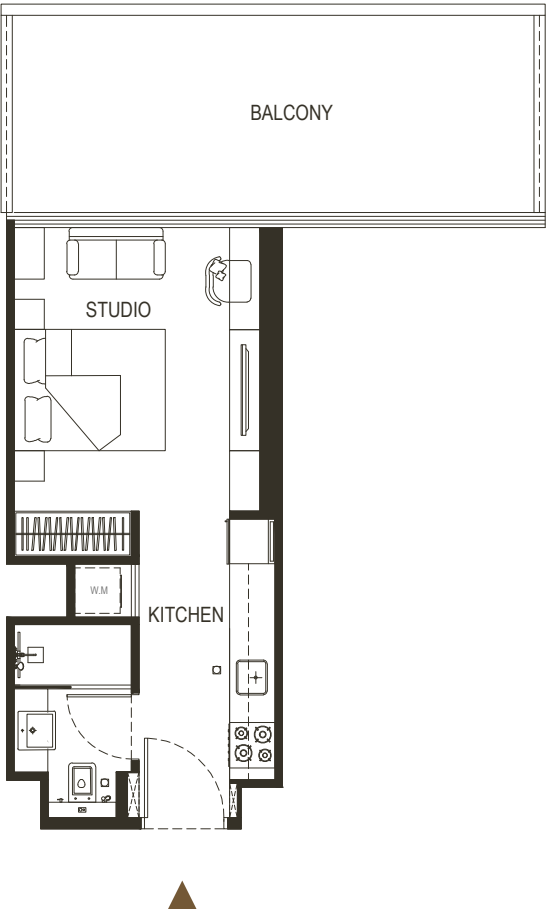
STUDIO

TYPE - 4



AREA	SQ.M	SQ.FT
SUITE AREA	29.05 m²	312.69 ft²
BALCONY AREA	10.07 m²	108.39 ft²
TOTAL UNIT AREA	39.12 m²	421.08 ft²

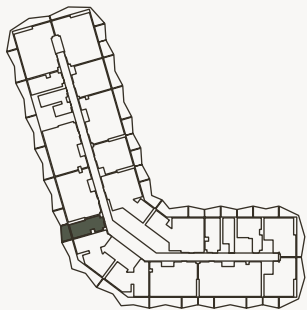
FLAT DESIGN COMPONENTS		
BATH	4 m²	
STUDIO	13 m²	
LAUNDRY	1 m²	
KITCHEN	7 m²	



6. Calculation of suite area is measured as the area bounded by the centre line of demising or partition walls separating one unit from another unit, the exterior face of all exterior walls, and the exterior face of the corridor wall enclosing the adjoining unit. 7. Calculation of balcony area is measured as the area bounded by the centre line of demising or partition walls separating one unit from another unit, the outmost face of the enclosing guard and the external face of the adjoining balcony. 8. The units are measured at typical floor in the building. Columns may vary in size depending on the floor level. 9. For each unit type, unit sizes and details might be different and your sales and purchase agreement will contain the actual size of each specific unit.

STUDIO

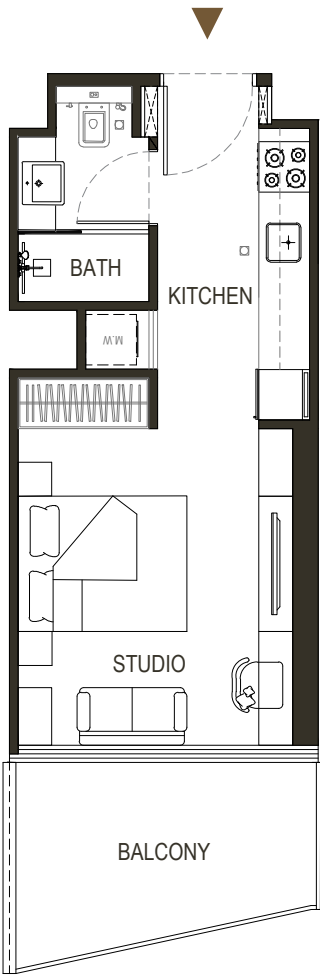
TYPE - 5



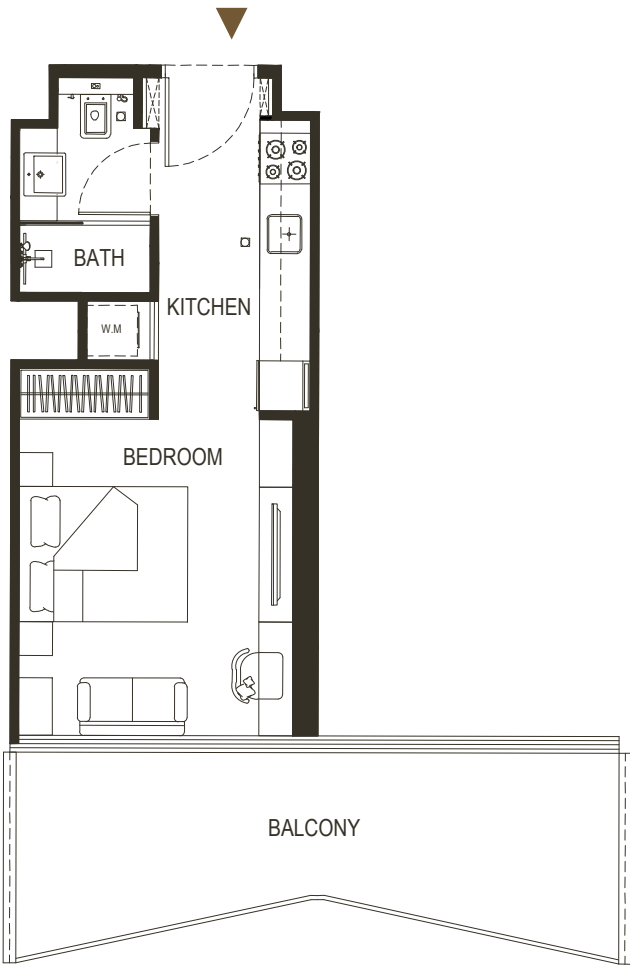
AREA	SQ.M	SQ.FT
SUITE AREA	27.91 m²	300.42 ft²
BALCONY AREA	7.93 m²	85.36 ft²
TOTAL UNIT AREA	35.84 m²	385.78 ft²

FLAT DESIGN COMPONENTS		
BATH	4 m²	
STUDIO	13 m²	
LAUNDRY	1 m²	
KITCHEN	7 m²	

Disclaimer: 1. All stated dimensions and services whether in relation to the building, common areas or individual units are subject to government and local authority approvals. Final dimensions and services will be stated in your sales and purchase agreement 2. All room dimensions are measured to structural elements and exclude wall finishes and construction tolerances. 3. All dimensions have been provided by our consultant architects. 4. All materials, dimensions and drawings are approximate. Information is subject to change without notice. 5. Actual suite area may vary from the stated area. Drawings are not to scale. The Developer reserves the right to make any revisions whatsoever including for aesthetic purposes.

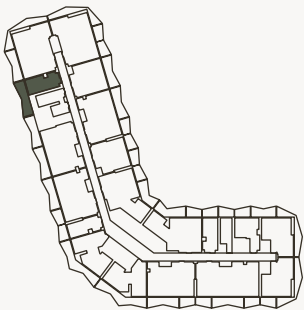


6. Calculation of suite area is measured as the area bounded by the centre line of demising or partition walls separating one unit from another unit, the exterior face of all exterior walls, and the exterior face of the corridor wall enclosing the adjoining unit. 7. Calculation of balcony area is measured as the area bounded by the centre line of demising or partition walls separating one unit from another unit, the outmost face of the enclosing guard and the external face of the adjoining balcony. 8. The units are measured at typical floor in the building. Columns may vary in size depending on the floor level. 9. For each unit type, unit sizes and details might be different and your sales and purchase agreement will contain the actual size of each specific unit.



STUDIO

TYPE - 6

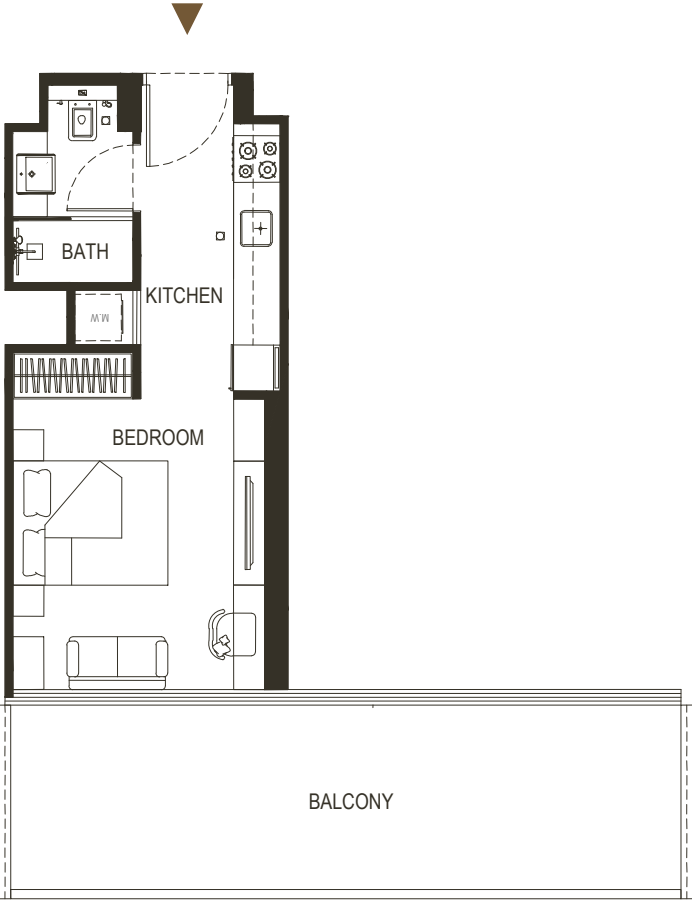
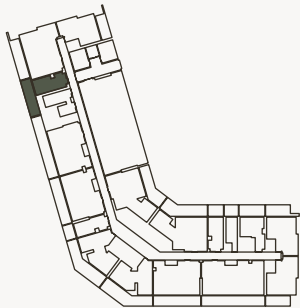


AREA	SQ.M	SQ.FT
SUITE AREA	30.21 m²	325.17 ft²
BALCONY AREA	19.01 m²	204.62 ft²
TOTAL UNIT AREA	49.22 m²	529.79 ft²

FLAT DESIGN COMPONENTS		
BATH	4 m²	
STUDIO	13 m²	
LAUNDRY	1 m²	
KITCHEN	7 m²	

STUDIO

TYPE - 7



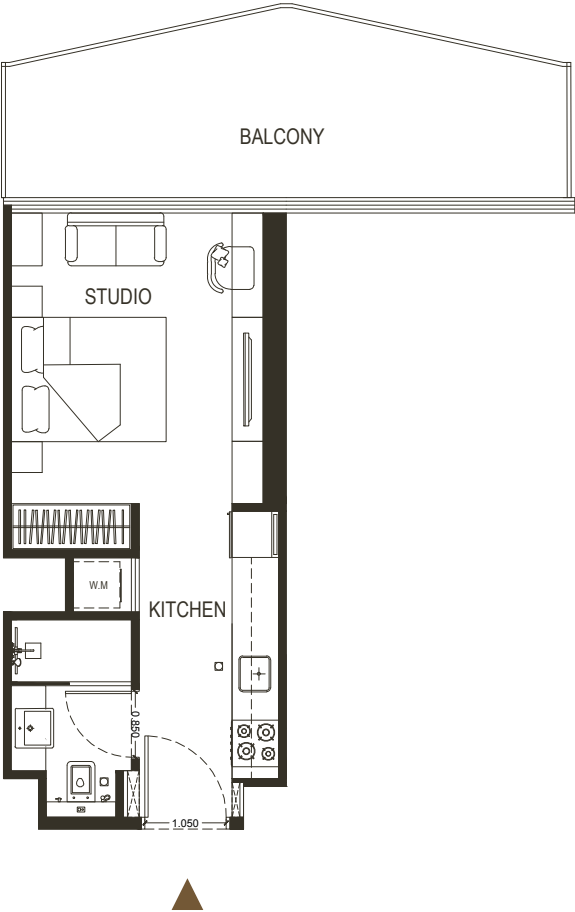
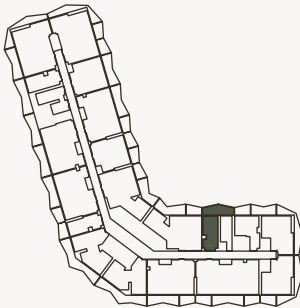
AREA	SQ.M	SQ.FT
SUITE AREA	30.21 m ²	325.17 ft ²
BALCONY AREA	18.12 m ²	195.04 ft ²
TOTAL UNIT AREA	48.33 m ²	520.21 ft ²

FLAT DESIGN COMPONENTS		
BATH	4 m ²	
STUDIO	13 m ²	
LAUNDRY	1 m ²	
KITCHEN	7 m ²	

Disclaimer: 1. All stated dimensions and services whether in relation to the building, common areas or individual units are subject to government and local authority approvals. Final dimensions and services will be stated in your sales and purchase agreement 2. All room dimensions are measured to structural elements and exclude wall finishes and construction tolerances. 3. All dimensions have been provided by our consultant architects. 4. All materials, dimensions and drawings are approximate. Information is subject to change without notice. 5. Actual suite area may vary from the stated area. Drawings are not to scale. The Developer reserves the right to make any revisions whatsoever including for aesthetic purposes.

STUDIO

TYPE - 8



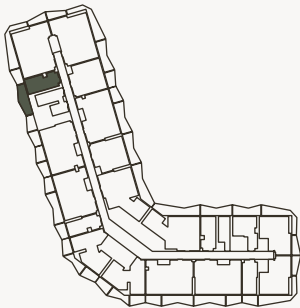
AREA	SQ.M	SQ.FT
SUITE AREA	28.92 m ²	311.29 ft ²
BALCONY AREA	8.02 m ²	86.32 ft ²
TOTAL UNIT AREA	36.94m ²	397.61 ft ²

FLAT DESIGN COMPONENTS		
BATH	4 m ²	
STUDIO	13 m ²	
LAUNDRY	1 m ²	
KITCHEN	7 m ²	

6. Calculation of suite area is measured as the area bounded by the centre line of demising or partition walls separating one unit from another unit, the exterior face of all exterior walls, and the exterior face of the corridor wall enclosing the adjoining unit. 7. Calculation of balcony area is measured as the area bounded by the centre line of demising or partition walls separating one unit from another unit, the outmost face of the enclosing guard and the external face of the adjoining balcony. 8. The units are measured at typical floor in the building. Columns may vary in size depending on the floor level. 9. For each unit type, unit sizes and details might be different and your sales and purchase agreement will contain the actual size of each specific unit.

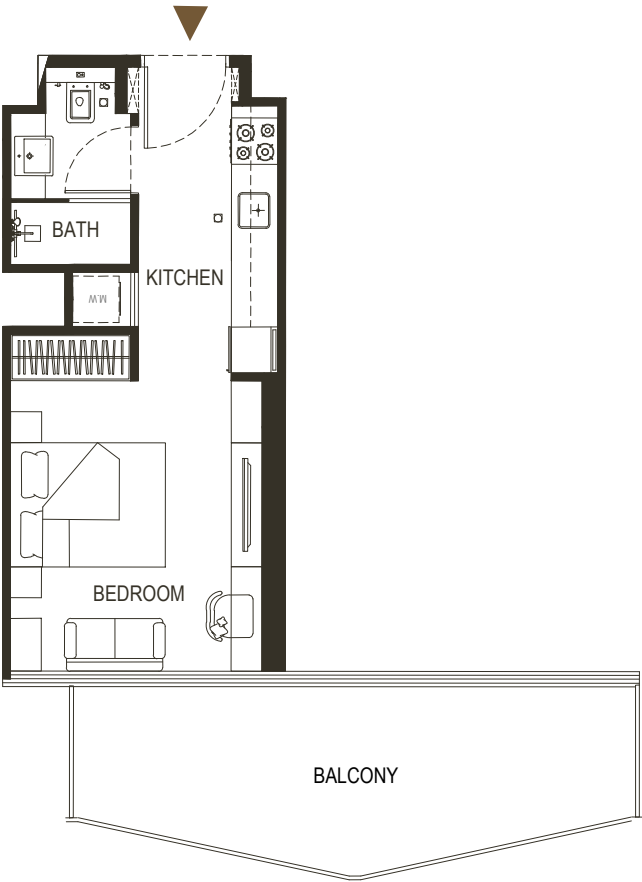
STUDIO

TYPE - 9



AREA	SQ.M	SQ.FT
SUITE AREA	30.21 m ²	325.17 ft ²
BALCONY AREA	18.64 m ²	200.63 ft ²
TOTAL UNIT AREA	48.85 m ²	525.81 ft ²

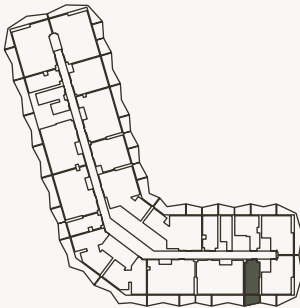
FLAT DESIGN COMPONENTS		
BATH	4 m ²	
STUDIO	13 m ²	
LAUNDRY	1 m ²	
KITCHEN	7 m ²	



Disclaimer: 1. All stated dimensions and services whether in relation to the building, common areas or individual units are subject to government and local authority approvals. Final dimensions and services will be stated in your sales and purchase agreement 2. All room dimensions are measured to structural elements and exclude wall finishes and construction tolerances. 3. All dimensions have been provided by our consultant architects. 4. All materials, dimensions and drawings are approximate. Information is subject to change without notice. 5. Actual suite area may vary from the stated area. Drawings are not to scale. The Developer reserves the right to make any revisions whatsoever including for aesthetic purposes.

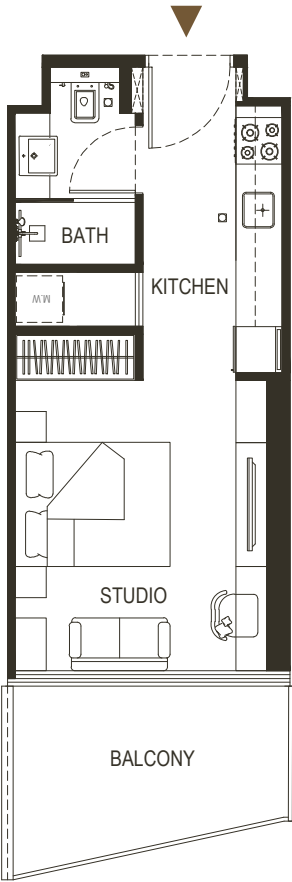
STUDIO

TYPE - 10



AREA	SQ.M	SQ.FT
SUITE AREA	28.82 m ²	310.21 ft ²
BALCONY AREA	7.93 m ²	85.35 ft ²
TOTAL UNIT AREA	36.75 m ²	395.57 ft ²

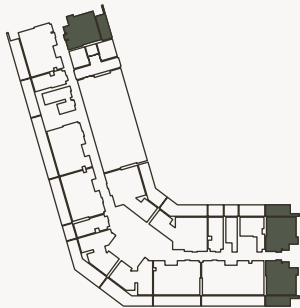
FLAT DESIGN COMPONENTS		
BATH	4 m ²	
STUDIO	13 m ²	
LAUNDRY	1 m ²	
KITCHEN	7 m ²	



6. Calculation of suite area is measured as the area bounded by the centre line of demising or partition walls separating one unit from another unit, the exterior face of all exterior walls, and the exterior face of the corridor wall enclosing the adjoining unit. 7. Calculation of balcony area is measured as the area bounded by the centre line of demising or partition walls separating one unit from another unit, the outmost face of the enclosing guard and the external face of the adjoining balcony. 8. The units are measured at typical floor in the building. Columns may vary in size depending on the floor level. 9. For each unit type, unit sizes and details might be different and your sales and purchase agreement will contain the actual size of each specific unit.

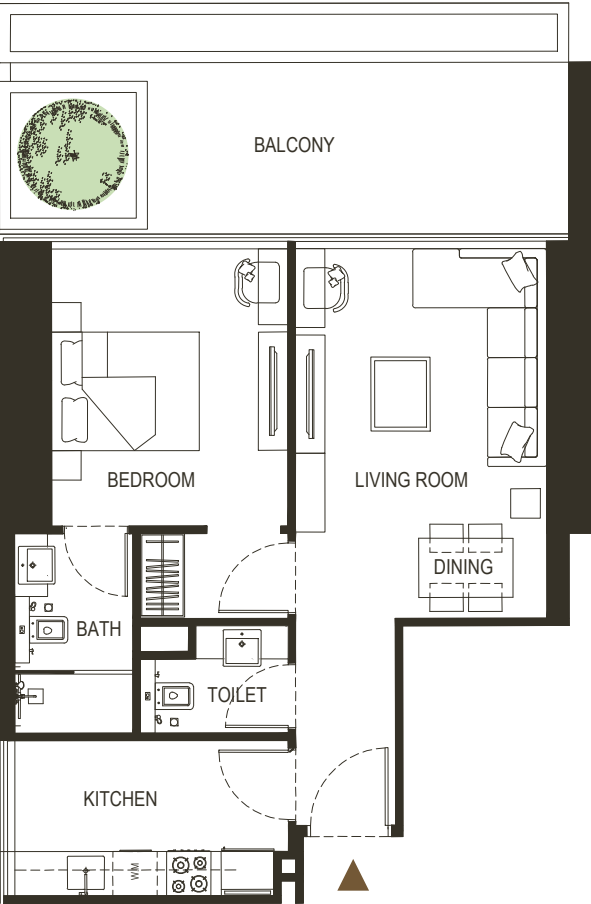
1 BEDROOM

TYPE - 1



AREA	SQ.M	SQ.FT
SUITE AREA	56.86 m ²	612.03 ft ²
BALCONY AREA	21.30 m ²	229.27 ft ²
TOTAL UNIT AREA	78.16 m ²	841.30 ft ²

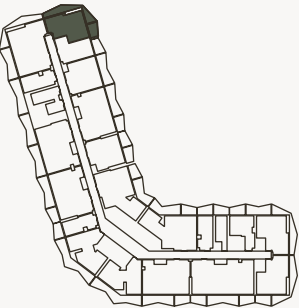
FLAT DESIGN COMPONENTS		
MASTER BATH	5 m ²	
MASTER BEDROOM	15 m ²	
LIVING	17 m ²	
KITCHEN & DINING	8 m ²	
W.C	3 m ²	
CORRIDOR	4 m ²	



Disclaimer: 1. All stated dimensions and services whether in relation to the building, common areas or individual units are subject to government and local authority approvals. Final dimensions and services will be stated in your sales and purchase agreement 2. All room dimensions are measured to structural elements and exclude wall finishes and construction tolerances. 3. All dimensions have been provided by our consultant architects. 4. All materials, dimensions and drawings are approximate. Information is subject to change without notice. 5. Actual suite area may vary from the stated area. Drawings are not to scale. The Developer reserves the right to make any revisions whatsoever including for aesthetic purposes.

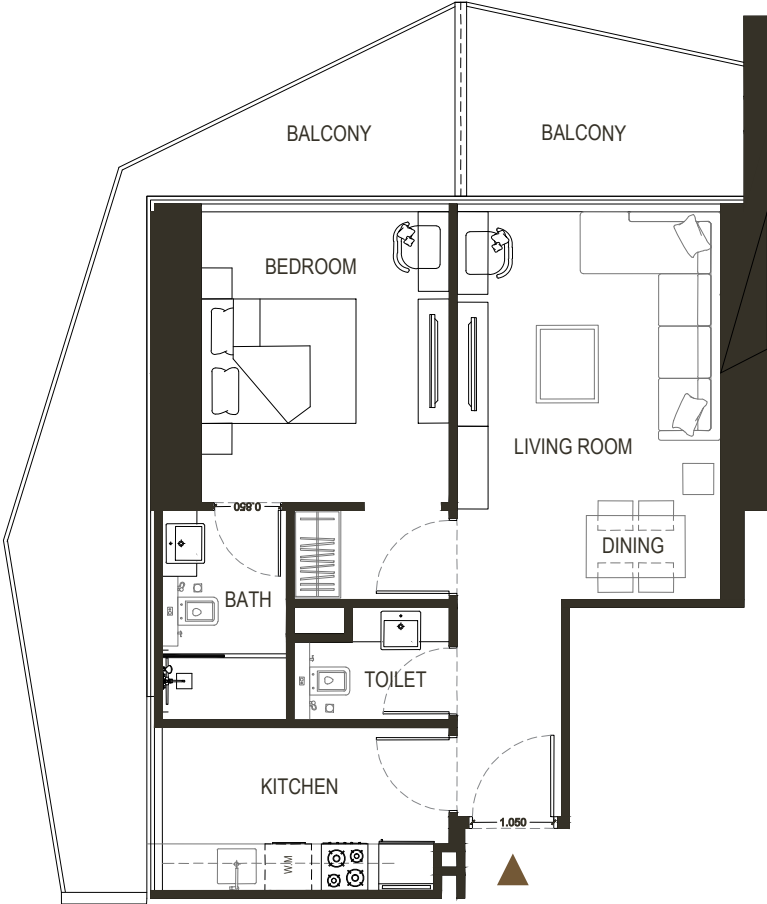
1 BEDROOM

TYPE - 2



AREA	SQ.M	SQ.FT
SUITE AREA	54.43 m ²	585.87 ft ²
BALCONY AREA	27.65 m ²	297.62 ft ²
TOTAL UNIT AREA	82.08 m ²	883.50 ft ²

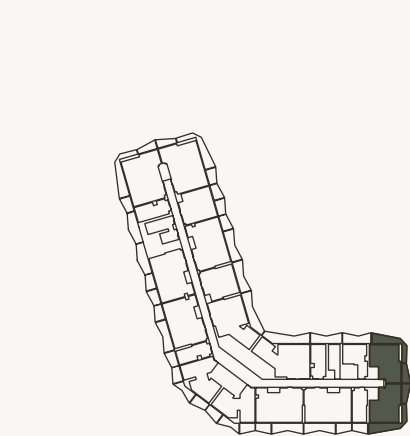
FLAT DESIGN COMPONENTS		
MASTER BATH	4 m ²	
MASTER BEDROOM	15 m ²	
LIVING	17 m ²	
KITCHEN & DINING	8 m ²	
W.C	3 m ²	
CORRIDOR	4 m ²	



6. Calculation of suite area is measured as the area bounded by the centre line of demising or partition walls separating one unit from another unit, the exterior face of all exterior walls, and the exterior face of the corridor wall enclosing the adjoining unit. 7. Calculation of balcony area is measured as the area bounded by the centre line of demising or partition walls separating one unit from another unit, the outmost face of the enclosing guard and the external face of the adjoining balcony. 8. The units are measured at typical floor in the building. Columns may vary in size depending on the floor level. 9. For each unit type, unit sizes and details might be different and your sales and purchase agreement will contain the actual size of each specific unit.

1 BEDROOM

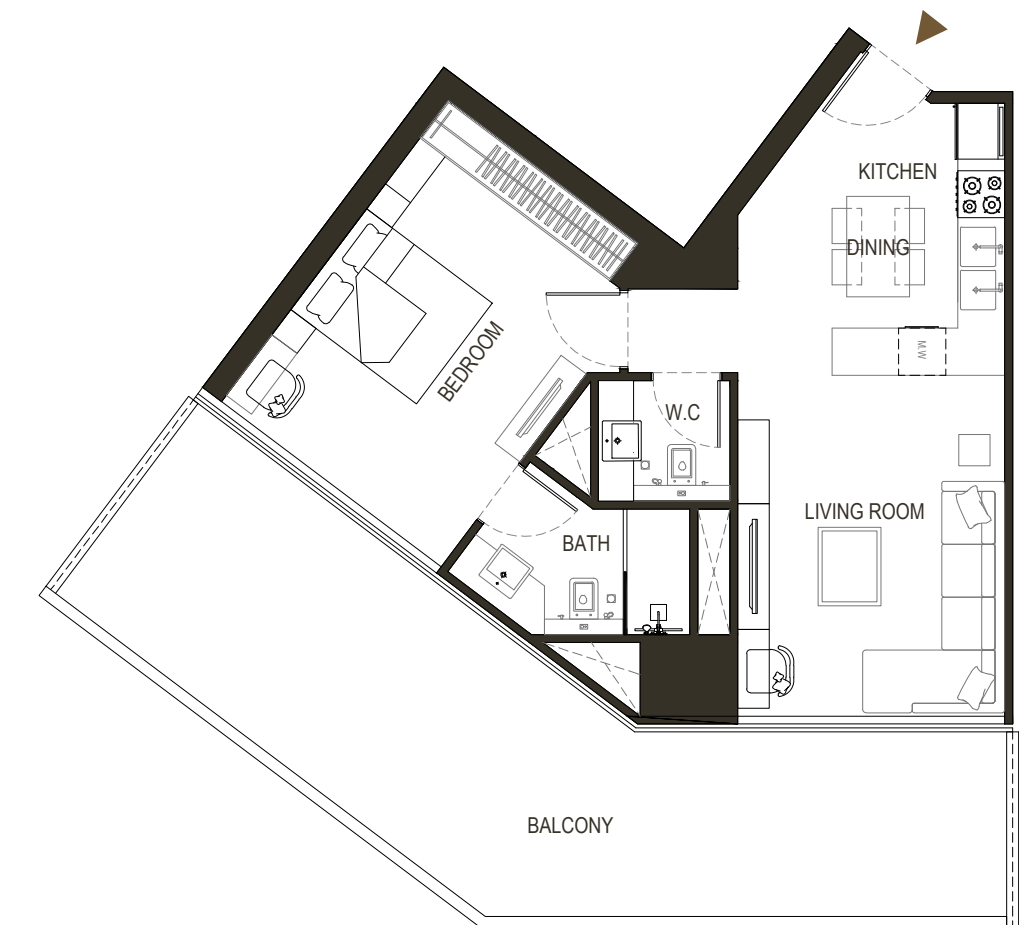
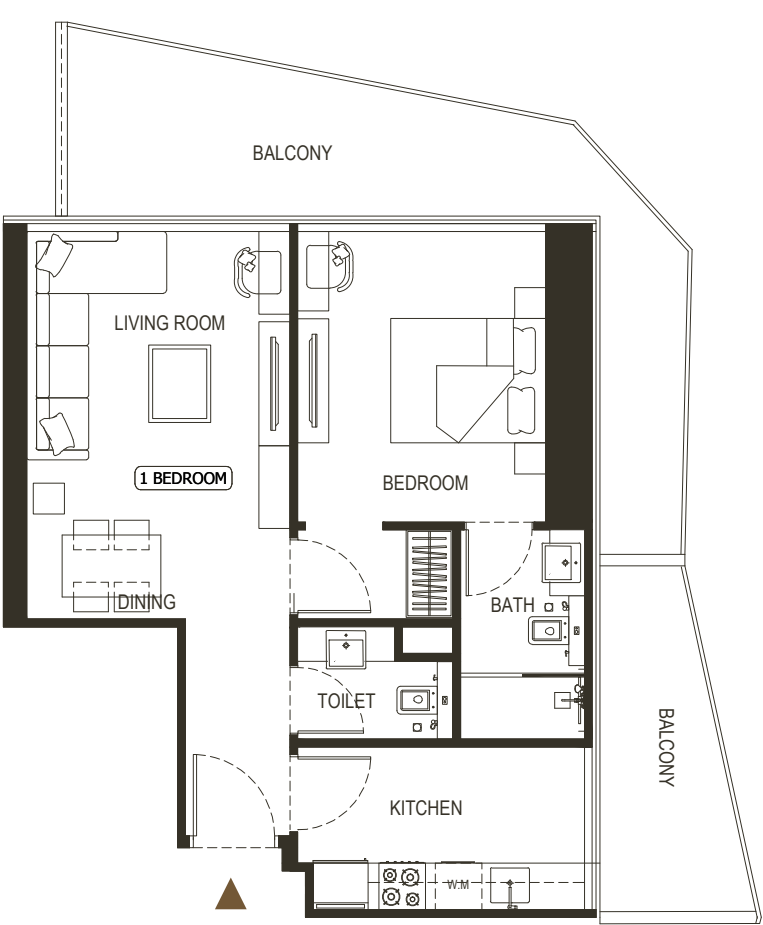
TYPE - 3



AREA	SQ.M	SQ.FT
SUITE AREA	56.87 m²	612.14 ft²
BALCONY AREA	28.85 m²	310.53 ft²
TOTAL UNIT AREA	85.72 m²	922.68 ft²

FLAT DESIGN COMPONENTS		
MASTER BATH	4 m²	
MASTER BEDROOM	15 m²	
LIVING	15 m²	
KITCHEN & DINING	8 m²	
W.C	3 m²	
CORRIDOR	4 m²	

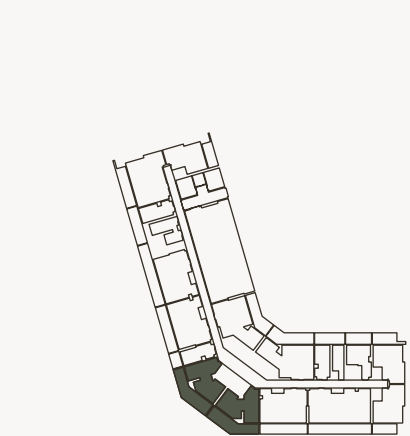
Disclaimer: 1. All stated dimensions and services whether in relation to the building, common areas or individual units are subject to government and local authority approvals. Final dimensions and services will be stated in your sales and purchase agreement 2. All room dimensions are measured to structural elements and exclude wall finishes and construction tolerances. 3. All dimensions have been provided by our consultant architects. 4. All materials, dimensions and drawings are approximate. Information is subject to change without notice. 5. Actual suite area may vary from the stated area. Drawings are not to scale. The Developer reserves the right to make any revisions whatsoever including for aesthetic purposes.



6. Calculation of suite area is measured as the area bounded by the centre line of demising or partition walls separating one unit from another unit, the exterior face of all exterior walls, and the exterior face of the corridor wall enclosing the adjoining unit. 7. Calculation of balcony area is measured as the area bounded by the centre line of demising or partition walls separating one unit from another unit, the outmost face of the enclosing guard and the external face of the adjoining balcony. 8. The units are measured at typical floor in the building. Columns may vary in size depending on the floor level. 9. For each unit type, unit sizes and details might be different and your sales and purchase agreement will contain the actual size of each specific unit.

1 BEDROOM

TYPE - 4

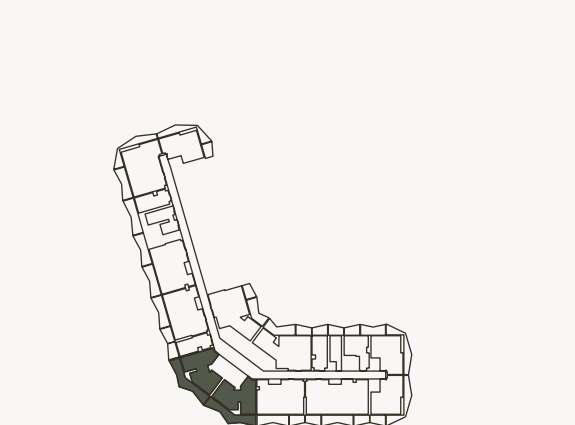


AREA	SQ.M	SQ.FT
SUITE AREA	61.22 m²	658.96 ft²
BALCONY AREA	36.70 m²	395.03 ft²
TOTAL UNIT AREA	97.92 m²	1054 ft²

FLAT DESIGN COMPONENTS	
MASTER BATH	5 m²
MASTER BEDROOM	17 m²
LIVING	15 m²
KITCHEN & DINING	11 m²
W.C	3 m²
CORRIDOR	2 m²

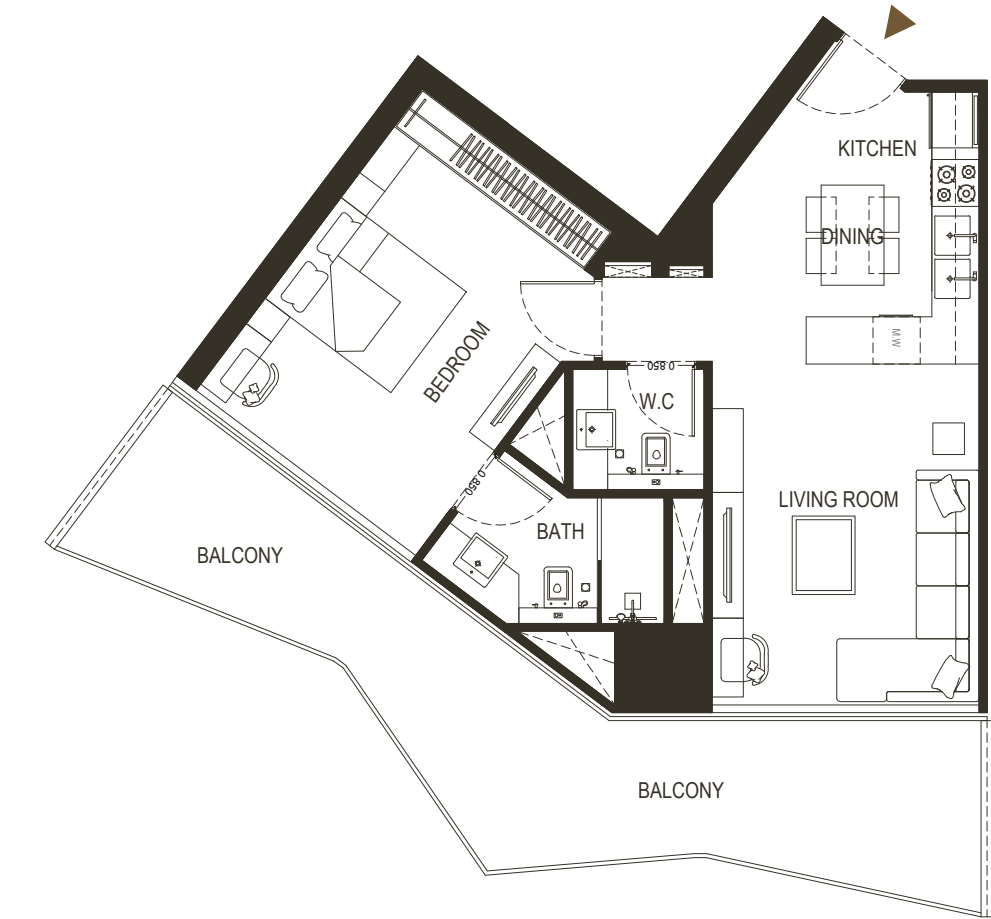
1 BEDROOM

TYPE - 5



AREA	SQ.M	SQ.FT
SUITE AREA	61.22 m²	658.96 ft²
BALCONY AREA	25.95 m²	279.32 ft²
TOTAL UNIT AREA	87.17 m²	938.29 ft²

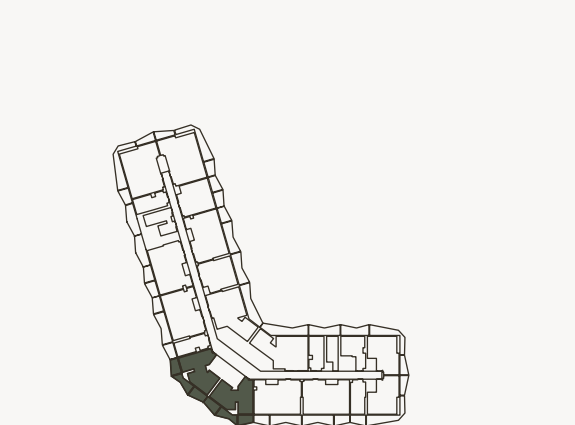
FLAT DESIGN COMPONENTS		
MASTER BATH	5 m²	
MASTER BEDROOM	17 m²	
LIVING	15 m²	
KITCHEN & DINING	11 m²	
W.C	3 m²	
CORRIDOR	2 m²	



Disclaimer: 1. All stated dimensions and services whether in relation to the building, common areas or individual units are subject to government and local authority approvals. Final dimensions and services will be stated in your sales and purchase agreement 2. All room dimensions are measured to structural elements and exclude wall finishes and construction tolerances. 3. All dimensions have been provided by our consultant architects. 4. All materials, dimensions and drawings are approximate. Information is subject to change without notice. 5. Actual suite area may vary from the stated area. Drawings are not to scale. The Developer reserves the right to make any revisions whatsoever including for aesthetic purposes.

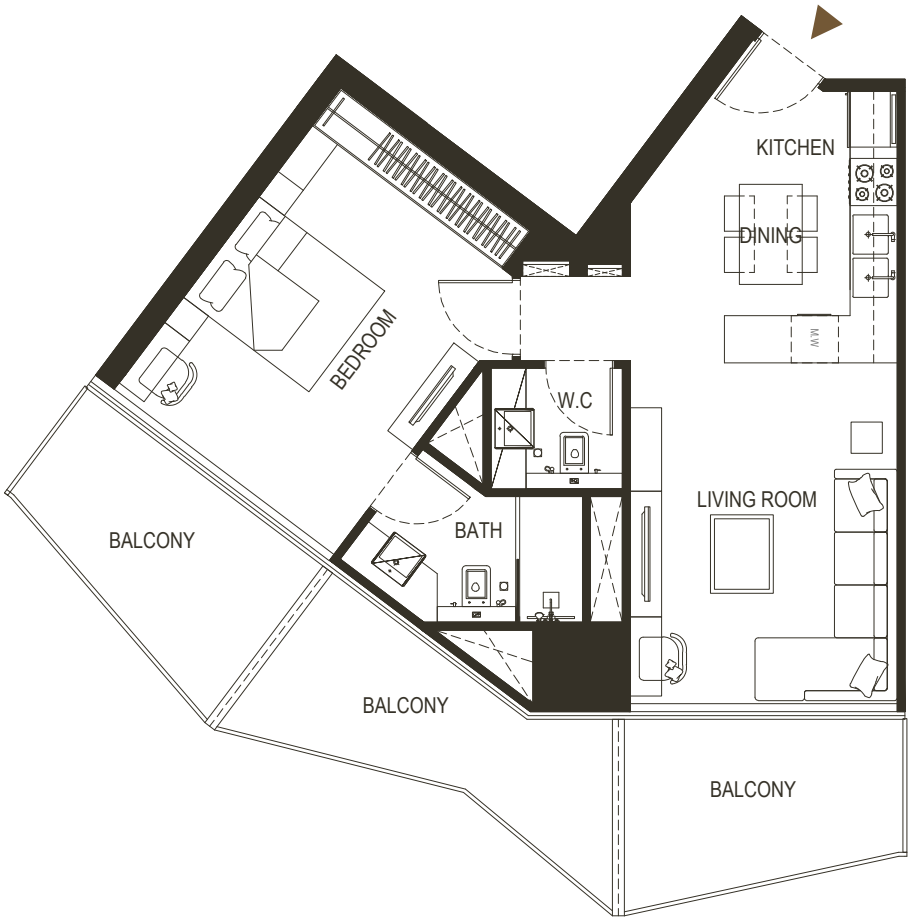
1 BEDROOM

TYPE - 6



AREA	SQ.M	SQ.FT
SUITE AREA	61.18 m²	658.53 ft²
BALCONY AREA	25.46 m²	274.04 ft²
TOTAL UNIT AREA	86.64 m²	932.58 ft²

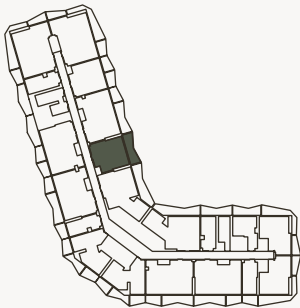
FLAT DESIGN COMPONENTS		
MASTER BATH	5 m²	
MASTER BEDROOM	17 m²	
LIVING	15 m²	
KITCHEN & DINING	11 m²	
W.C	3 m²	
CORRIDOR	2 m²	



6. Calculation of suite area is measured as the area bounded by the centre line of demising or partition walls separating one unit from another unit, the exterior face of all exterior walls, and the exterior face of the corridor wall enclosing the adjoining unit. 7. Calculation of balcony area is measured as the area bounded by the centre line of demising or partition walls separating one unit from another unit, the outmost face of the enclosing guard and the external face of the adjoining balcony. 8. The units are measured at typical floor in the building. Columns may vary in size depending on the floor level. 9. For each unit type, unit sizes and details might be different and your sales and purchase agreement will contain the actual size of each specific unit.

1 BEDROOM

TYPE - 7

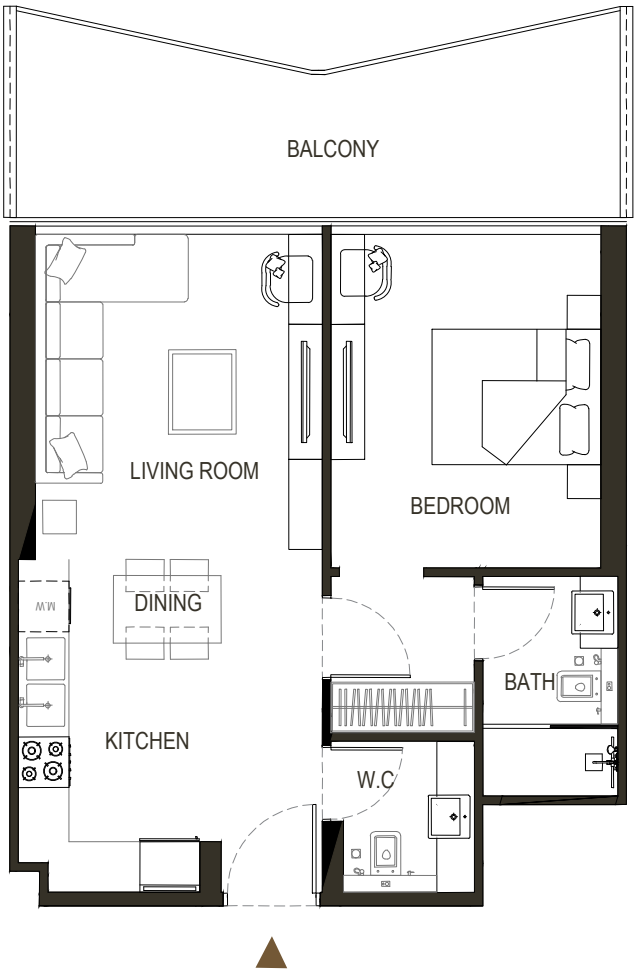


AREA	SQ.M	SQ.FT
SUITE AREA	56.33 m²	606.33 ft²
BALCONY AREA	15.67 m²	168.67 ft²
TOTAL UNIT AREA	72 m²	775 ft²

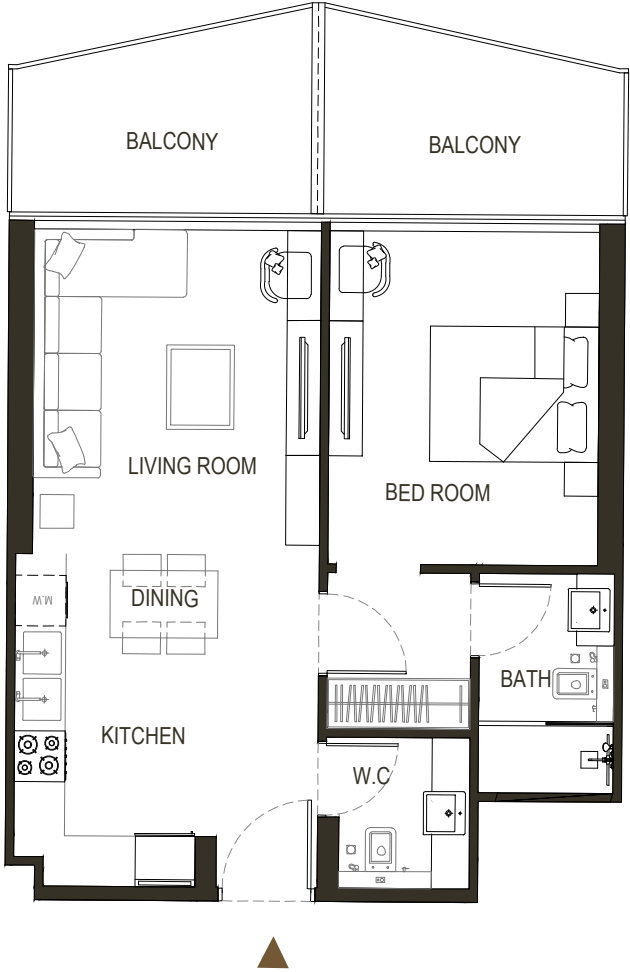
FLAT DESIGN COMPONENTS

MASTER BATH	4 m²
MASTER BEDROOM	16 m²
LIVING	13 m²
KITCHEN & DINING	9 m²
W.C	3 m²
CORRIDOR	5 m²

Disclaimer: 1. All stated dimensions and services whether in relation to the building, common areas or individual units are subject to government and local authority approvals. Final dimensions and services will be stated in your sales and purchase agreement 2. All room dimensions are measured to structural elements and exclude wall finishes and construction tolerances. 3. All dimensions have been provided by our consultant architects. 4. All materials, dimensions and drawings are approximate. Information is subject to change without notice. 5. Actual suite area may vary from the stated area. Drawings are not to scale. The Developer reserves the right to make any revisions whatsoever including for aesthetic purposes.

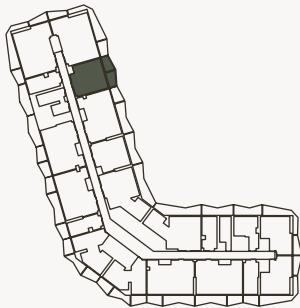


6. Calculation of suite area is measured as the area bounded by the centre line of demising or partition walls separating one unit from another unit, the exterior face of all exterior walls, and the exterior face of the corridor wall enclosing the adjoining unit. 7. Calculation of balcony area is measured as the area bounded by the centre line of demising or partition walls separating one unit from another unit, the outmost face of the enclosing guard and the external face of the adjoining balcony. 8. The units are measured at typical floor in the building. Columns may vary in size depending on the floor level. 9. For each unit type, unit sizes and details might be different and your sales and purchase agreement will contain the actual size of each specific unit.



1 BEDROOM

TYPE - 8



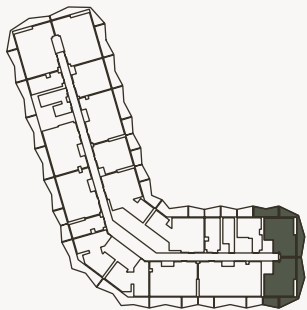
AREA	SQ.M	SQ.FT
SUITE AREA	56.33 m²	606.33 ft²
BALCONY AREA	15.67 m²	168.67 ft²
TOTAL UNIT AREA	72 m²	775 ft²

FLAT DESIGN COMPONENTS

MASTER BATH	4 m²
MASTER BEDROOM	16 m²
LIVING	13 m²
KITCHEN & DINING	9 m²
W.C	3 m²
CORRIDOR	5 m²

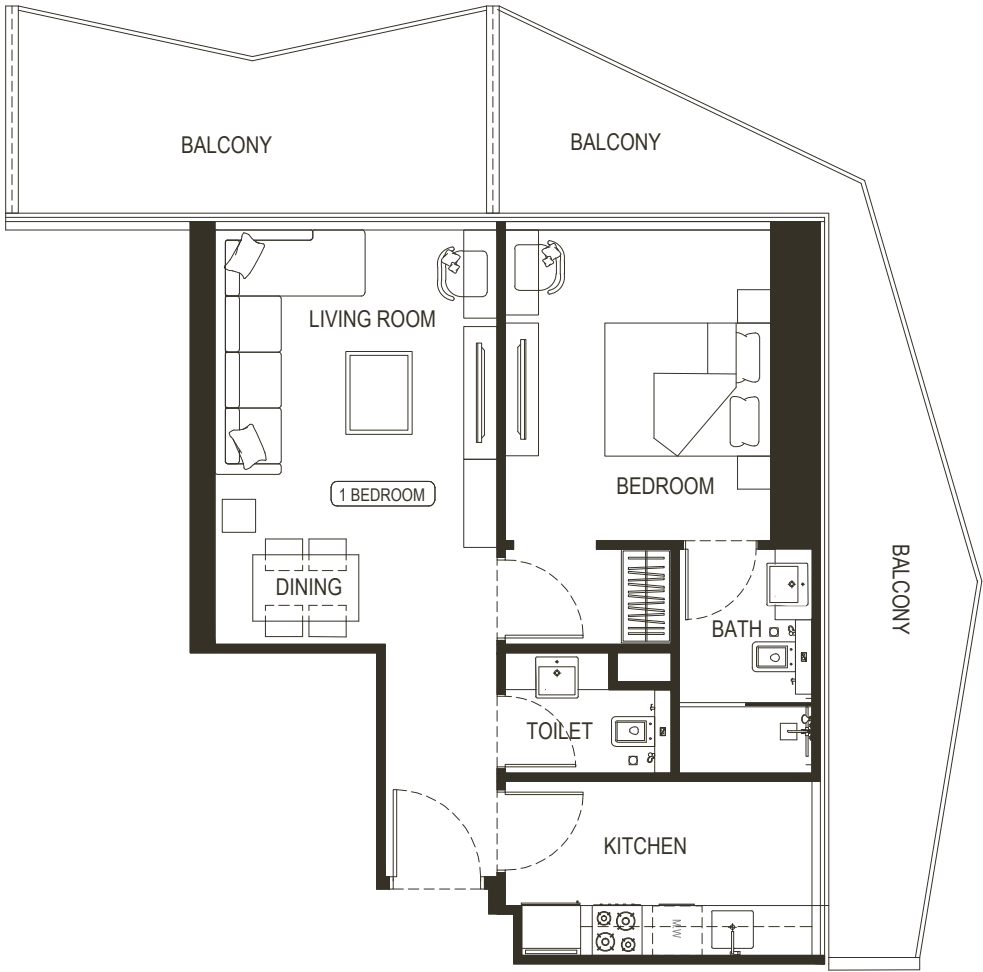
1 BEDROOM

TYPE - 9



AREA	SQ.M	SQ.FT
SUITE AREA	56.87 m²	612.14 ft²
BALCONY AREA	28.12 m²	302.68 ft²
TOTAL UNIT AREA	84.99 m²	914.82 ft²

FLAT DESIGN COMPONENTS		
MASTER BATH		5 m²
MASTER BEDROOM		15 m²
LIVING		17 m²
KITCHEN & DINING		8 m²
W.C		3 m²
CORRIDOR		4 m²

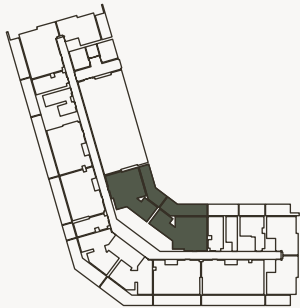


Disclaimer: 1. All stated dimensions and services whether in relation to the building, common areas or individual units are subject to government and local authority approvals. Final dimensions and services will be stated in your sales and purchase agreement 2. All room dimensions are measured to structural elements and exclude wall finishes and construction tolerances. 3. All dimensions have been provided by our consultant architects. 4. All materials, dimensions and drawings are approximate. Information is subject to change without notice. 5. Actual suite area may vary from the stated area. Drawings are not to scale. The Developer reserves the right to make any revisions whatsoever including for aesthetic purposes.



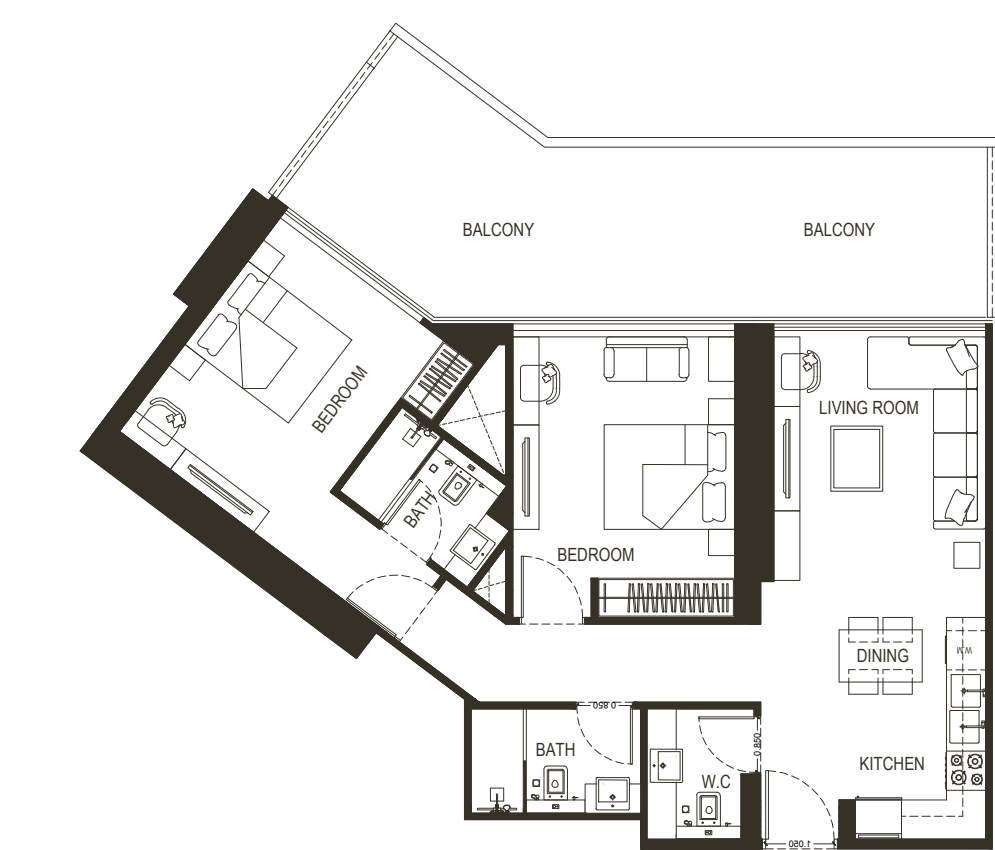
2 BEDROOM

TYPE - 1



AREA	SQ.M	SQ.FT
SUITE AREA	85.76 m²	923.11 ft²
BALCONY AREA	31.23 m²	336.16 ft²
TOTAL UNIT AREA	116.99 m²	1259.27 ft²

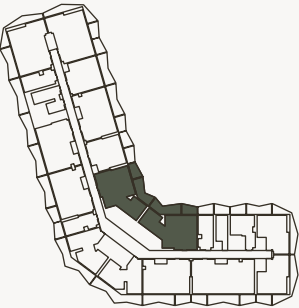
FLAT DESIGN COMPONENTS		
MASTER BATH	4 m²	
MASTER BEDROOM	16 m²	
LIVING	14 m²	
KITCHEN & DINING	12 m²	
BATH	4 m²	
BEDROOM	15 m²	
CORRIDOR	7 m²	
W.C	7 m²	



Disclaimer: 1. All stated dimensions and services whether in relation to the building, common areas or individual units are subject to government and local authority approvals. Final dimensions and services will be stated in your sales and purchase agreement 2. All room dimensions are measured to structural elements and exclude wall finishes and construction tolerances. 3. All dimensions have been provided by our consultant architects. 4. All materials, dimensions and drawings are approximate. Information is subject to change without notice. 5. Actual suite area may vary from the stated area. Drawings are not to scale. The Developer reserves the right to make any revisions whatsoever including for aesthetic purposes.

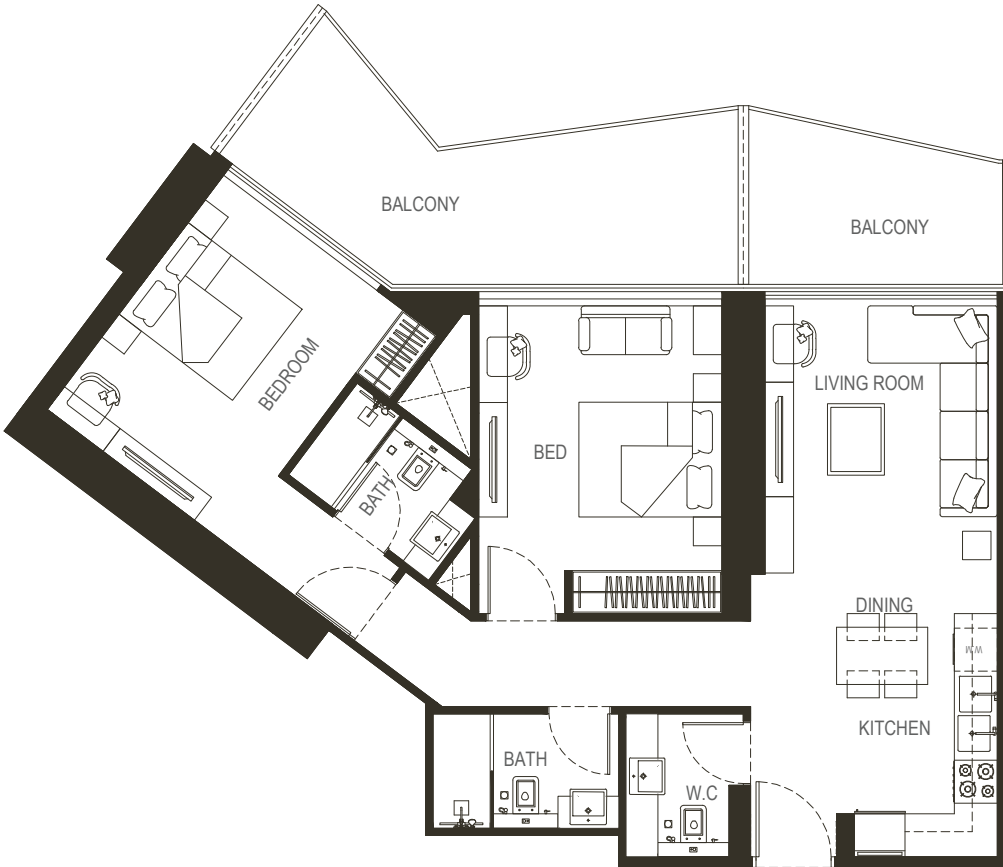
2 BEDROOM

TYPE - 2



AREA	SQ.M	SQ.FT
SUITE AREA	85.57 m²	921.07 ft²
BALCONY AREA	24.91 m²	268.13 ft²
TOTAL UNIT AREA	110.48 m²	1189.20 ft²

FLAT DESIGN COMPONENTS		
MASTER BATH	4 m²	
MASTER BEDROOM	16 m²	
LIVING	14 m²	
KITCHEN & DINING	12 m²	
BATH	4 m²	
BEDROOM	15 m²	
CORRIDOR	7 m²	
W.C	7 m²	

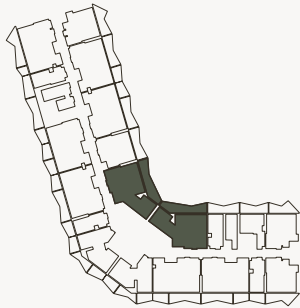


6. Calculation of suite area is measured as the area bounded by the centre line of demising or partition walls separating one unit from another unit, the exterior face of all exterior walls, and the exterior face of the corridor wall enclosing the adjoining unit. 7. Calculation of balcony area is measured as the area bounded by the centre line of demising or partition walls separating one unit from another unit, the outmost face of the enclosing guard and the external face of the adjoining balcony. 8. The units are measured at typical floor in the building. Columns may vary in size depending on the floor level. 9. For each unit type, unit sizes and details might be different and your sales and purchase agreement will contain the actual size of each specific unit.

FLOOR PLAN

2 BEDROOM

TYPE - 3

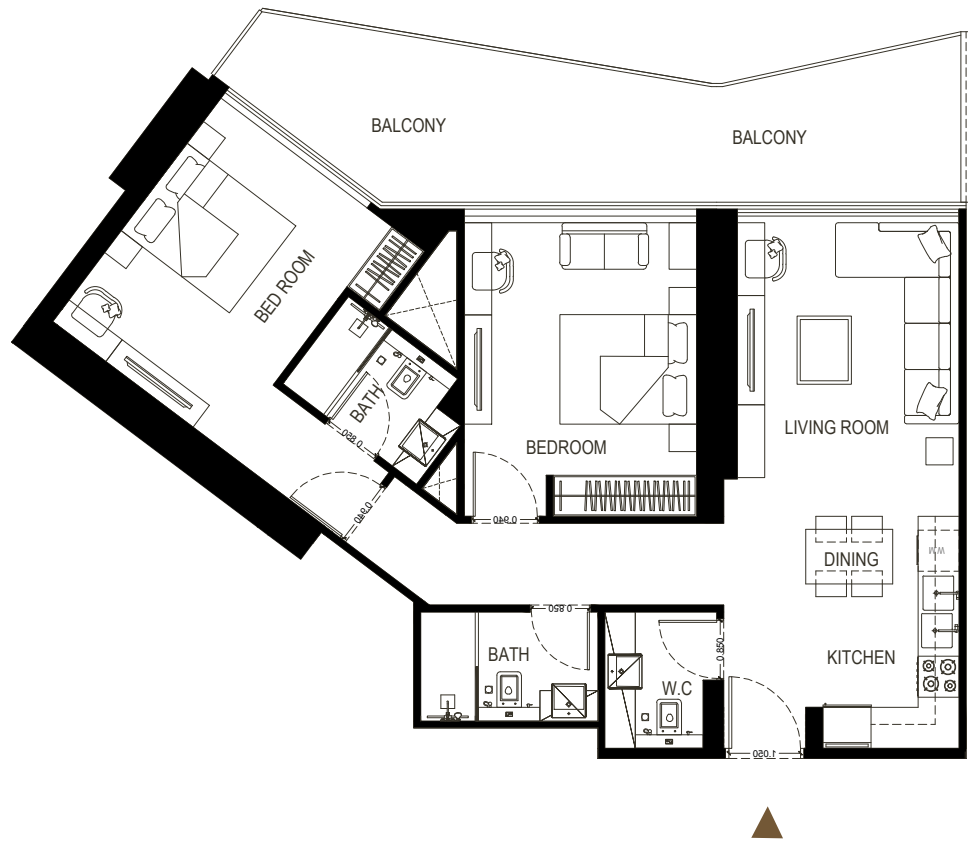


AREA	SQ.M	SQ.FT
SUITE AREA	85.57 m²	921.07 ft²
BALCONY AREA	23.39 m²	251.77 ft²
TOTAL UNIT AREA	108.96 m²	1172.84 ft²

FLAT DESIGN COMPONENTS

MASTER BATH	4 m ²
MASTER BEDROOM	16 m ²
LIVING	14 m ²
KITCHEN & DINING	12 m ²
BATH	4 m ²
BEDROOM	15 m ²
CORRIDOR	7 m ²
W.C	7 m ²

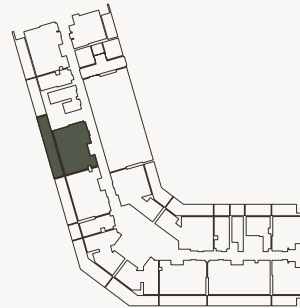
Disclaimer: 1. All stated dimensions and services whether in relation to the building, common areas or individual units are subject to government and local authority approvals. Final dimensions and services will be stated in your sales and purchase agreement 2. All room dimensions are measured to structural elements and exclude wall finishes and construction tolerances. 3. All dimensions have been provided by our consultant architects. 4. All materials, dimensions and drawings are approximate. Information is subject to change without notice. 5. Actual suite area may vary from the stated area. Drawings are not to scale. The Developer reserves the right to make any revisions whatsoever including for aesthetic purposes.



FLOOR PLAN

2 BEDROOM

TYPE - 4



AREA	SQ.M	SQ.FT
SUITE AREA	84.31 m ²	907.50 ft ²
BALCONY AREA	41.68 m ²	448.63 ft ²
TOTAL UNIT AREA	111.82 m ²	1203.62 ft ²

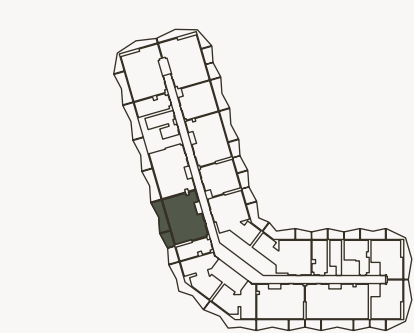
FLAT DESIGN COMPONENTS

MASTER BATH	5 m ²
MASTER BEDROOM	19 m ²
LIVING	13 m ²
KITCHEN & DINING	9 m ²
BATH	4 m ²
BEDROOM	12 m ²
CORRIDOR	9 m ²
LAUNDRY	1 m ²
W.C	3 m ²

6. Calculation of suite area is measured as the area bounded by the centre line of demising or partition walls separating one unit from another unit, the exterior face of all exterior walls, and the exterior face of the corridor wall enclosing the adjoining unit. 7. Calculation of balcony area is measured as the area bounded by the centre line of demising or partition walls separating one unit from another unit, the outmost face of the enclosing guard and the external face of the adjoining balcony. 8. The units are measured at typical floor in the building. Columns may vary in size depending on the floor level. 9. For each unit type, unit sizes and details might be different and your sales and purchase agreement will contain the actual size of each specific unit.

2 BEDROOM

TYPE - 5

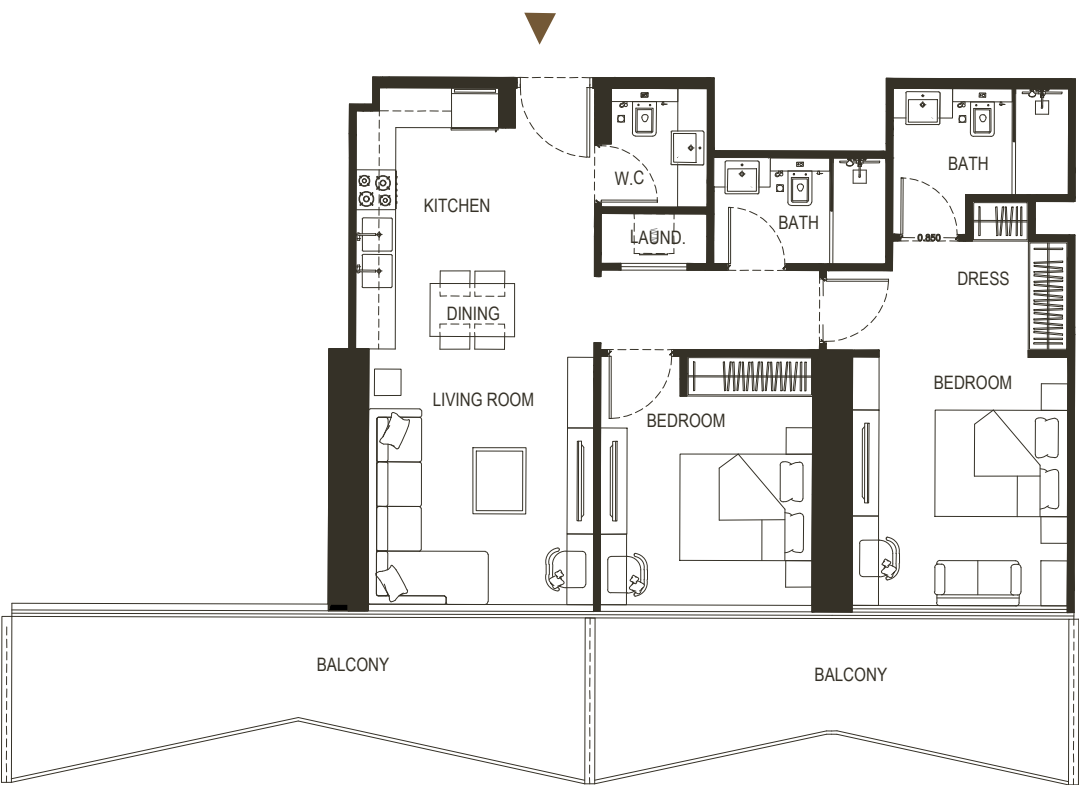
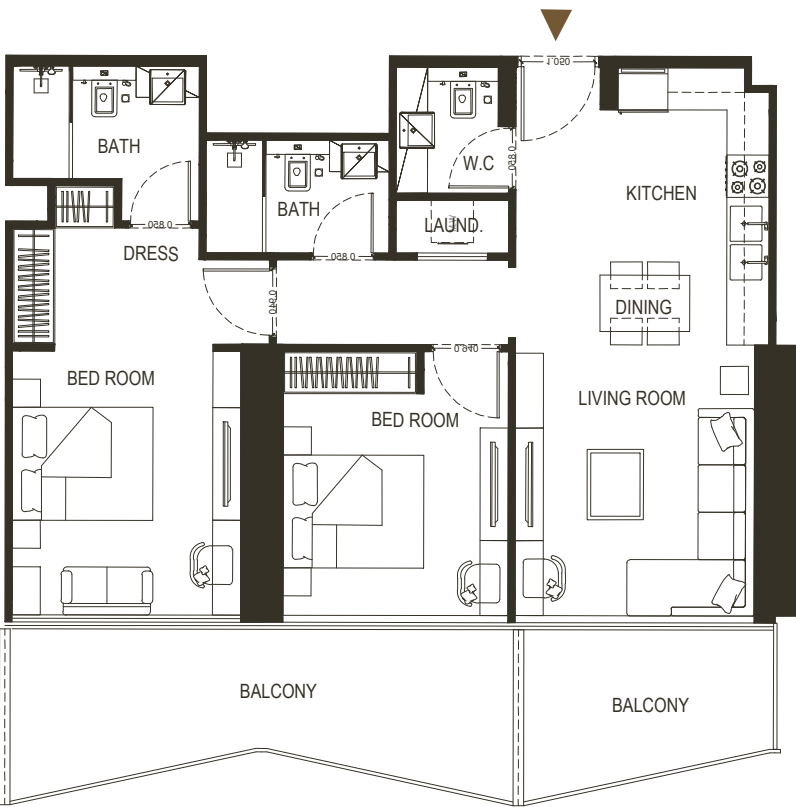


AREA	SQ.M	SQ.FT
SUITE AREA	84.30 m²	907.39 ft²
BALCONY AREA	23.59 m²	253.92 ft²
TOTAL UNIT AREA	107.89 m²	1161.31 ft²

FLAT DESIGN COMPONENTS

MASTER BATH	5 m²
MASTER BEDROOM	19 m²
LIVING	13 m²
KITCHEN & DINING	9 m²
BATH	4 m²
BEDROOM	12 m²
CORRIDOR	9 m²
LAUNDRY	1 m²
W.C	3 m²

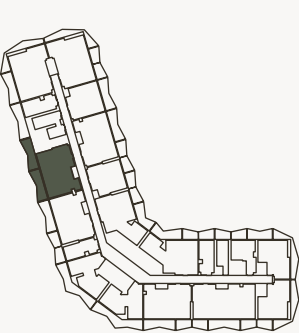
Disclaimer: 1. All stated dimensions and services whether in relation to the building, common areas or individual units are subject to government and local authority approvals. Final dimensions and services will be stated in your sales and purchase agreement 2. All room dimensions are measured to structural elements and exclude wall finishes and construction tolerances. 3. All dimensions have been provided by our consultant architects. 4. All materials, dimensions and drawings are approximate. Information is subject to change without notice. 5. Actual suite area may vary from the stated area. Drawings are not to scale. The Developer reserves the right to make any revisions whatsoever including for aesthetic purposes.



6. Calculation of suite area is measured as the area bounded by the centre line of demising or partition walls separating one unit from another unit, the exterior face of all exterior walls, and the exterior face of the corridor wall enclosing the adjoining unit. 7. Calculation of balcony area is measured as the area bounded by the centre line of demising or partition walls separating one unit from another unit, the outmost face of the enclosing guard and the external face of the adjoining balcony. 8. The units are measured at typical floor in the building. Columns may vary in size depending on the floor level. 9. For each unit type, unit sizes and details might be different and your sales and purchase agreement will contain the actual size of each specific unit.

2 BEDROOM

TYPE - 6



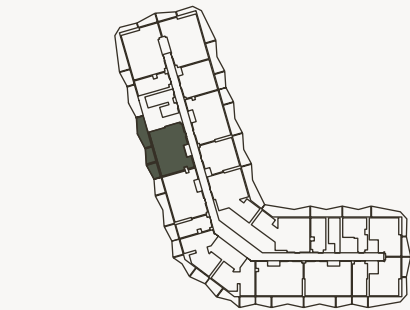
AREA	SQ.M	SQ.FT
SUITE AREA	84.31 m²	907.50 ft²
BALCONY AREA	32.66 m²	351.54 ft²
TOTAL UNIT AREA	116.97 m²	1259.05 ft²

FLAT DESIGN COMPONENTS

MASTER BATH	5 m²
MASTER BEDROOM	19 m²
LIVING	13 m²
KITCHEN & DINING	9 m²
BATH	4 m²
BEDROOM	12 m²
CORRIDOR	9 m²
LAUNDRY	1 m²
W.C	3 m²

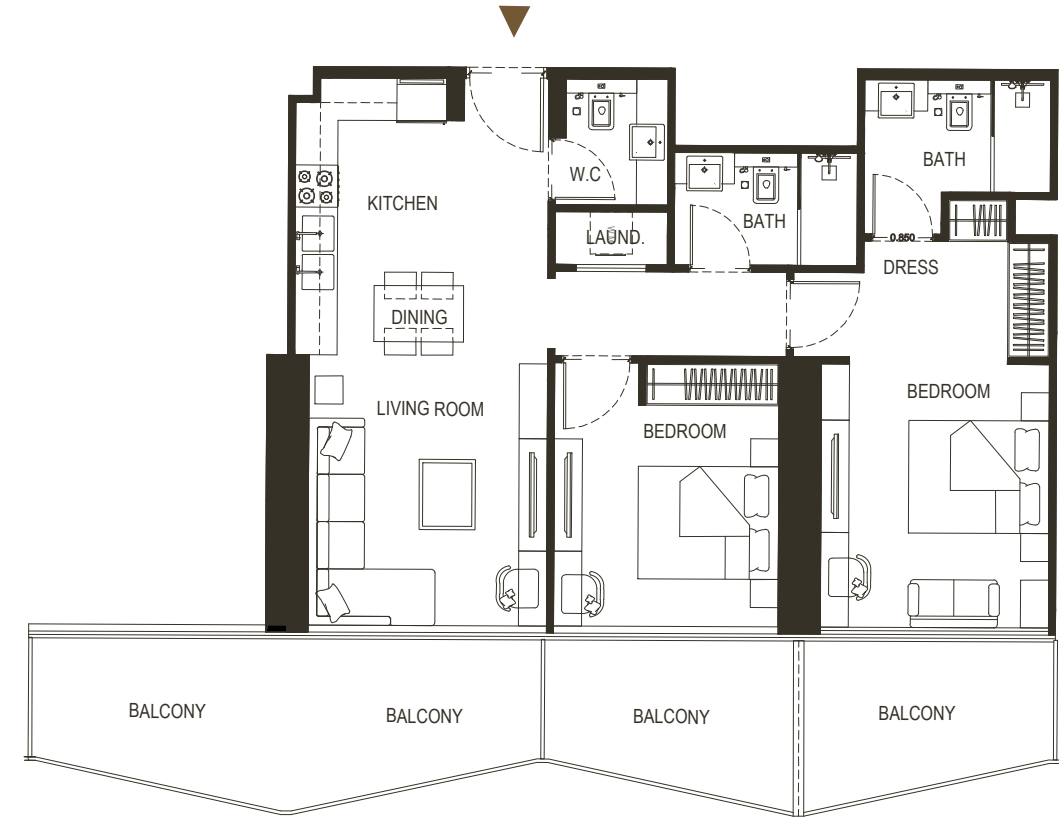
2 BEDROOM

TYPE - 7



AREA	SQ.M	SQ.FT
SUITE AREA	84.31 m²	907.50 ft²
BALCONY AREA	32.54m²	350.25 ft²
TOTAL UNIT AREA	116.85 m²	1257.76 ft²

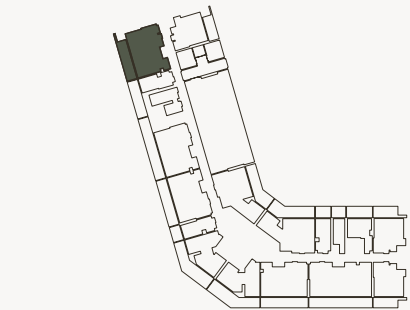
FLAT DESIGN COMPONENTS		
MASTER BATH	5 m²	
MASTER BEDROOM	19 m²	
LIVING	13 m²	
KITCHEN & DINING	9 m²	
BATH	4 m²	
BEDROOM	12 m²	
CORRIDOR	9 m²	
LAUNDRY	1 m²	
W.C	3 m²	



Disclaimer: 1. All stated dimensions and services whether in relation to the building, common areas or individual units are subject to government and local authority approvals. Final dimensions and services will be stated in your sales and purchase agreement 2. All room dimensions are measured to structural elements and exclude wall finishes and construction tolerances. 3. All dimensions have been provided by our consultant architects. 4. All materials, dimensions and drawings are approximate. Information is subject to change without notice. 5. Actual suite area may vary from the stated area. Drawings are not to scale. The Developer reserves the right to make any revisions whatsoever including for aesthetic purposes.

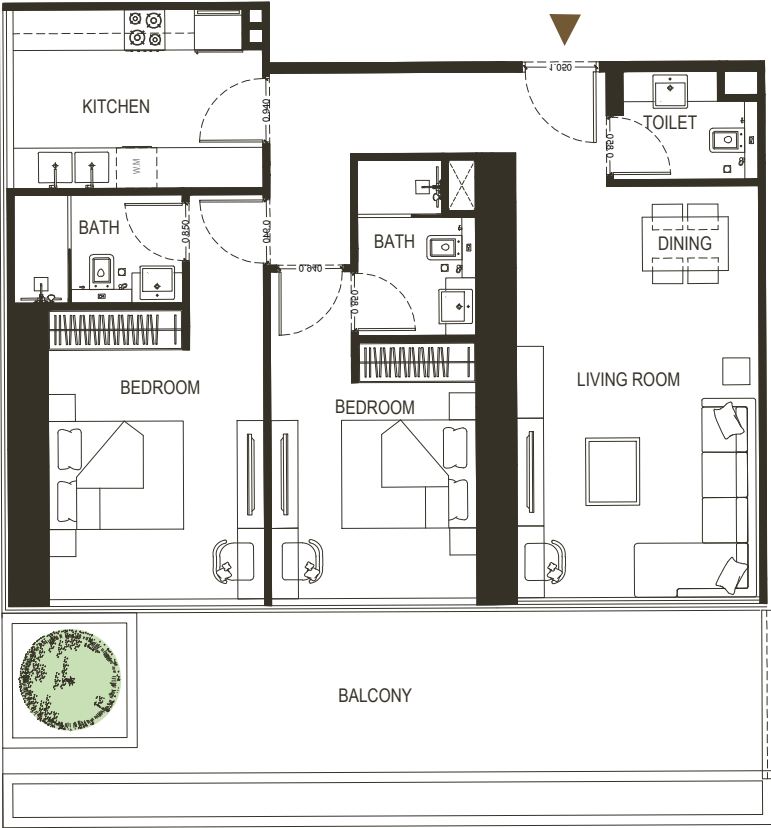
2 BEDROOM

TYPE - 8



AREA	SQ.M	SQ.FT
SUITE AREA	85.15 m²	916 ft²
BALCONY AREA	28.34 m²	305.05 ft²
TOTAL UNIT AREA	113.49 m²	1221.60 ft²

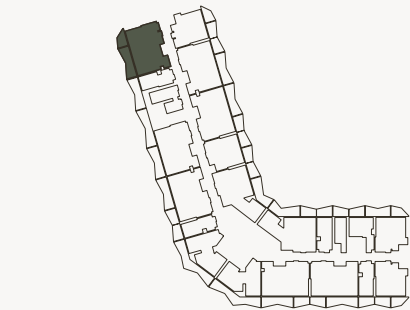
FLAT DESIGN COMPONENTS		
MASTER BATH	5 m²	
MASTER BEDROOM	19 m²	
LIVING	13 m²	
KITCHEN & DINING	9 m²	
BATH	4 m²	
BEDROOM	12 m²	
CORRIDOR	9 m²	
LAUNDRY	1 m²	
W.C	3 m²	



6. Calculation of suite area is measured as the area bounded by the centre line of demising or partition walls separating one unit from another unit, the exterior face of all exterior walls, and the exterior face of the corridor wall enclosing the adjoining unit. 7. Calculation of balcony area is measured as the area bounded by the centre line of demising or partition walls separating one unit from another unit, the outmost face of the enclosing guard and the external face of the adjoining balcony. 8. The units are measured at typical floor in the building. Columns may vary in size depending on the floor level. 9. For each unit type, unit sizes and details might be different and your sales and purchase agreement will contain the actual size of each specific unit.

2 BEDROOM

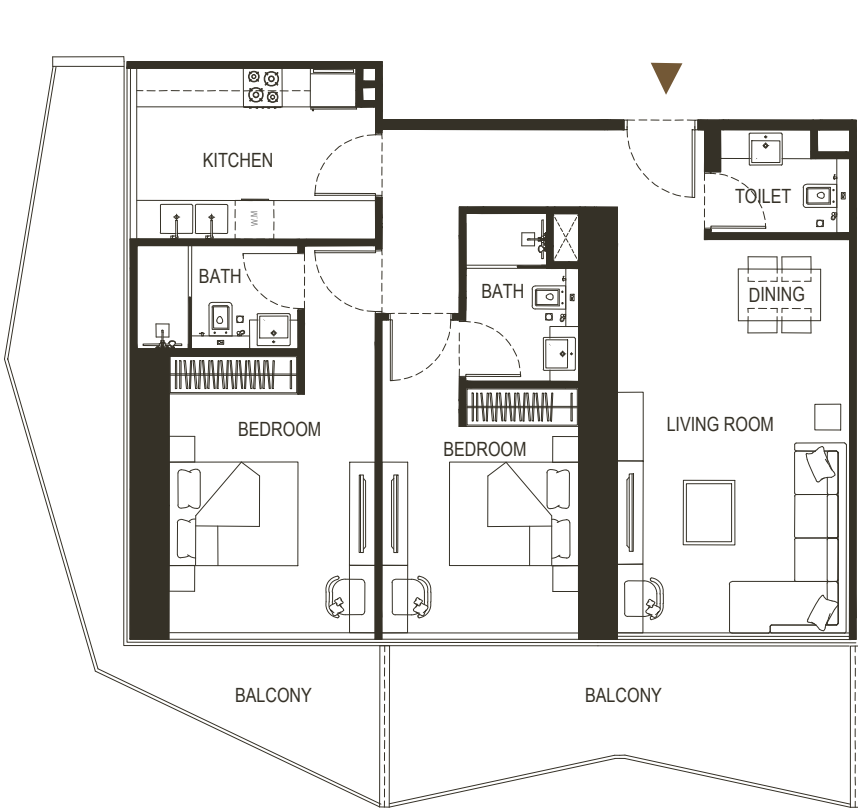
TYPE - 9



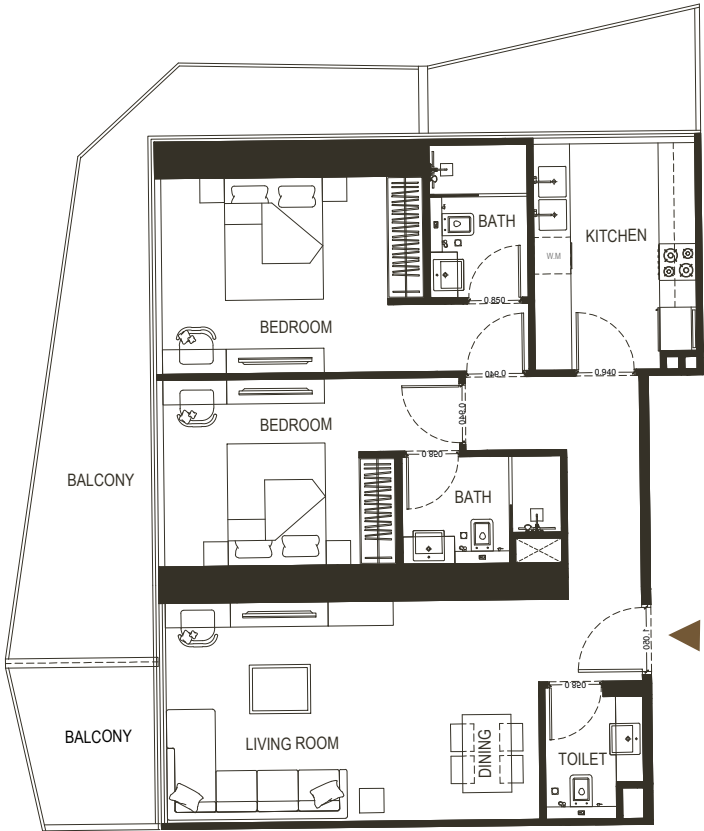
AREA	SQ.M	SQ.FT
SUITE AREA	91.53 m ²	985.22 ft ²
BALCONY AREA	36.51 m ²	392.22 ft ²
TOTAL UNIT AREA	128.04 m ²	1378.21 ft ²

FLAT DESIGN COMPONENTS		
MASTER BATH	4 m ²	
MASTER BEDROOM	16 m ²	
LIVING	23 m ²	
KITCHEN & DINING	10 m ²	
BATH	4 m ²	
BEDROOM	13 m ²	
CORRIDOR	8 m ²	
W.C	3 m ²	

Disclaimer: 1. All stated dimensions and services whether in relation to the building, common areas or individual units are subject to government and local authority approvals. Final dimensions and services will be stated in your sales and purchase agreement 2. All room dimensions are measured to structural elements and exclude wall finishes and construction tolerances. 3. All dimensions have been provided by our consultant architects. 4. All materials, dimensions and drawings are approximate. Information is subject to change without notice. 5. Actual suite area may vary from the stated area. Drawings are not to scale. The Developer reserves the right to make any revisions whatsoever including for aesthetic purposes.

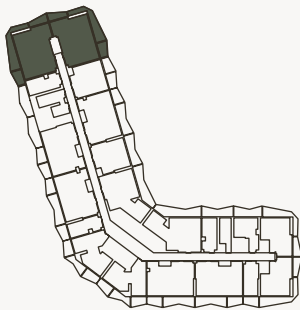


6. Calculation of suite area is measured as the area bounded by the centre line of demising or partition walls separating one unit from another unit, the exterior face of all exterior walls, and the exterior face of the corridor wall enclosing the adjoining unit. 7. Calculation of balcony area is measured as the area bounded by the centre line of demising or partition walls separating one unit from another unit, the outmost face of the enclosing guard and the external face of the adjoining balcony. 8. The units are measured at typical floor in the building. Columns may vary in size depending on the floor level. 9. For each unit type, unit sizes and details might be different and your sales and purchase agreement will contain the actual size of each specific unit.



2 BEDROOM

TYPE - 10

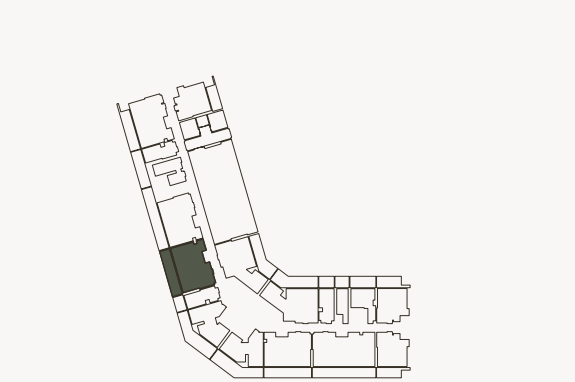


AREA	SQ.M	SQ.FT
SUITE AREA	91.80 m ²	988.12 ft ²
BALCONY AREA	36.68 m ²	394.82 ft ²
TOTAL UNIT AREA	128.48 m ²	1382.94 ft ²

FLAT DESIGN COMPONENTS		
MASTER BATH	4 m ²	
MASTER BEDROOM	16 m ²	
LIVING & DINING	23 m ²	
KITCHEN	10 m ²	
BATH	4 m ²	
BEDROOM	13 m ²	
CORRIDOR	8 m ²	
W.C	3 m ²	

2 BEDROOM

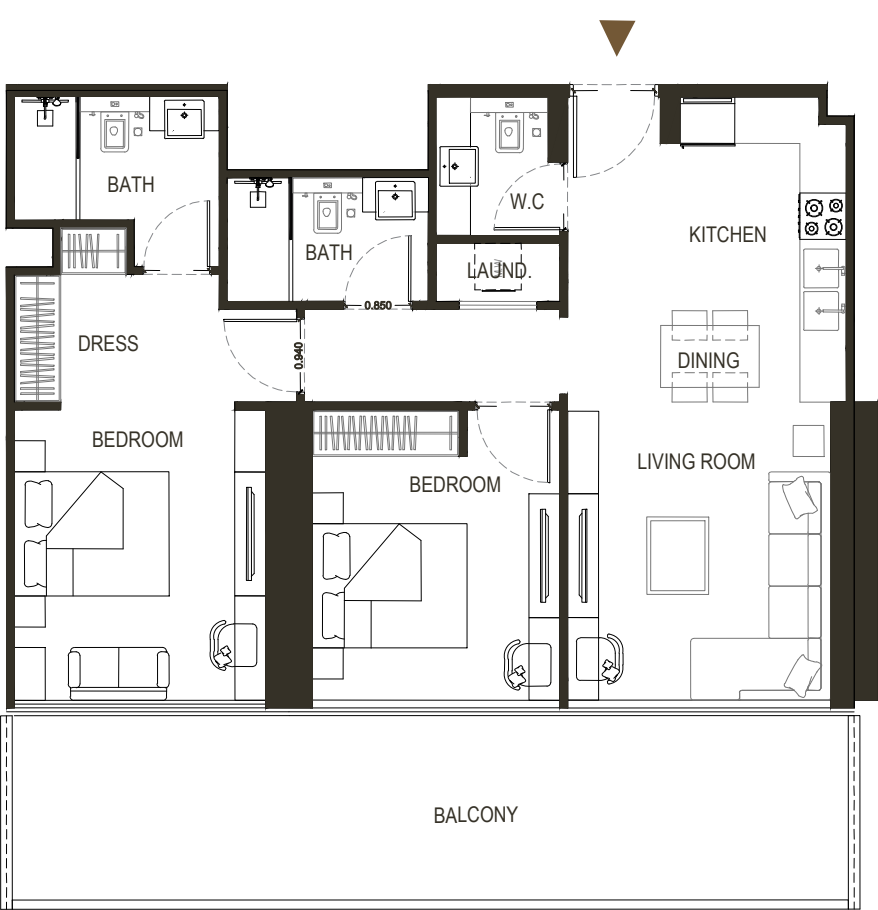
TYPE - 11



AREA	SQ.M	SQ.FT
SUITE AREA	84.30 m²	907.40 ft²
BALCONY AREA	27.52 m²	296.22 ft²
TOTAL UNIT AREA	111.82 m²	1203.62 ft²

FLAT DESIGN COMPONENTS

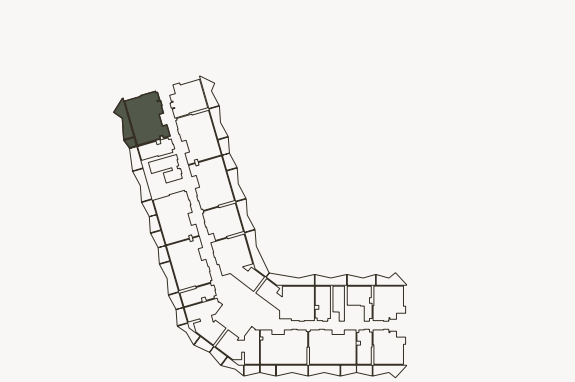
MASTER BATH	5 m²
MASTER BEDROOM	19 m²
LIVING	13 m²
KITCHEN & DINING	9 m²
BATH	4 m²
BEDROOM	12 m²
CORRIDOR	9 m²
LAUNDRY	1 m²
W.C	3 m²



Disclaimer: 1. All stated dimensions and services whether in relation to the building, common areas or individual units are subject to government and local authority approvals. Final dimensions and services will be stated in your sales and purchase agreement 2. All room dimensions are measured to structural elements and exclude wall finishes and construction tolerances. 3. All dimensions have been provided by our consultant architects. 4. All materials, dimensions and drawings are approximate. Information is subject to change without notice. 5. Actual suite area may vary from the stated area. Drawings are not to scale. The Developer reserves the right to make any revisions whatsoever including for aesthetic purposes.

2 BEDROOM

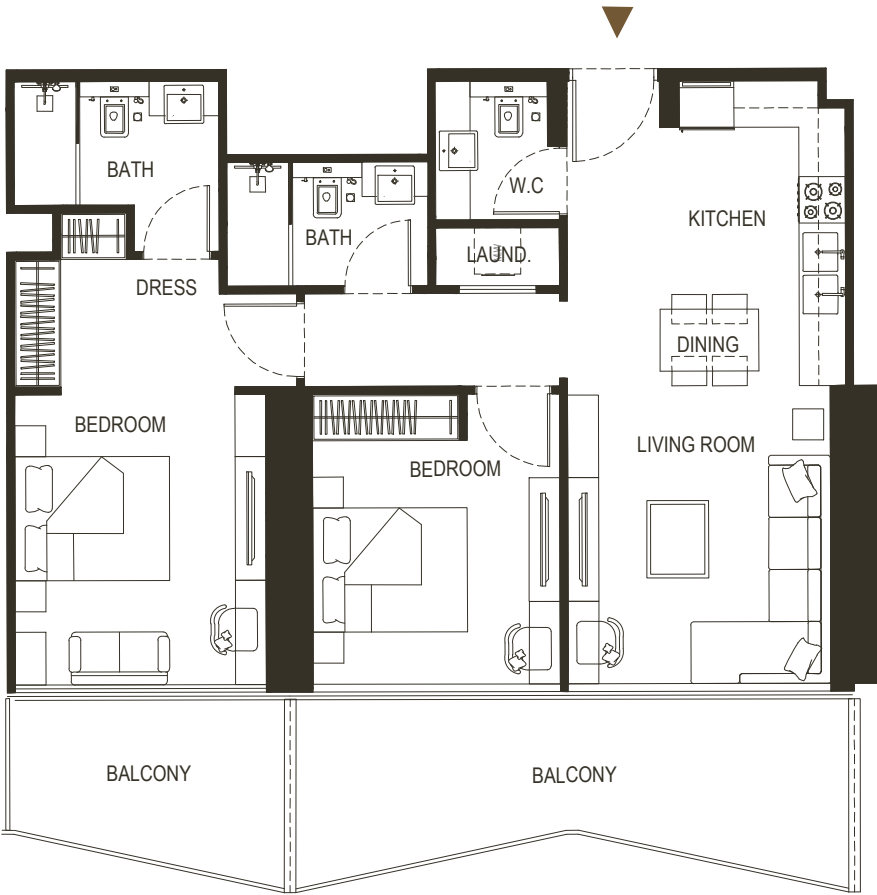
TYPE - 12



AREA	SQ.M	SQ.FT
SUITE AREA	84.30 m²	907.39 ft²
BALCONY AREA	23.53m²	253.27 ft²
TOTAL UNIT AREA	107.83 m²	1160.67 ft²

FLAT DESIGN COMPONENTS

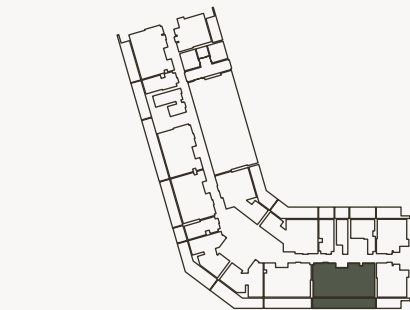
MASTER BATH	5 m²
MASTER BEDROOM	19 m²
LIVING	13 m²
KITCHEN & DINING	9 m²
BATH	4 m²
BEDROOM	12 m²
CORRIDOR	9 m²
LAUNDRY	1 m²
W.C	3 m²



6. Calculation of suite area is measured as the area bounded by the centre line of demising or partition walls separating one unit from another unit, the exterior face of all exterior walls, and the exterior face of the corridor wall enclosing the adjoining unit. 7. Calculation of balcony area is measured as the area bounded by the centre line of demising or partition walls separating one unit from another unit, the outmost face of the enclosing guard and the external face of the adjoining balcony. 8. The units are measured at typical floor in the building. Columns may vary in size depending on the floor level. 9. For each unit type, unit sizes and details might be different and your sales and purchase agreement will contain the actual size of each specific unit.

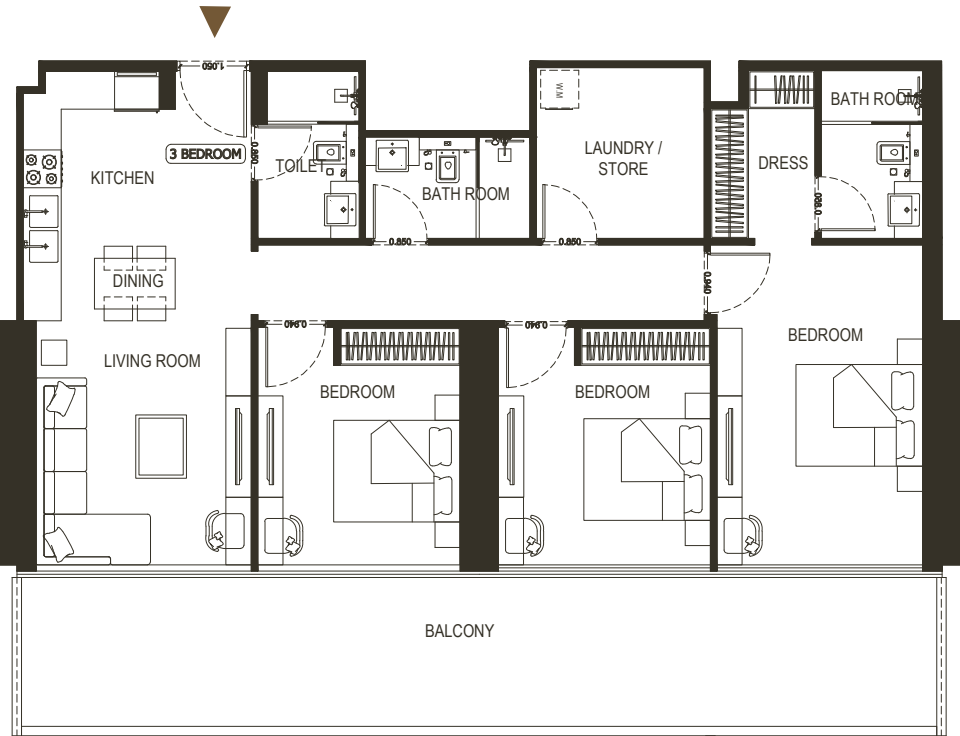
3 BEDROOM

TYPE - 1



AREA	SQ.M	SQ.FT
SUITE AREA	113.10 m ²	1217.40 ft ²
BALCONY AREA	36.31 m ²	390.84 ft ²
TOTAL UNIT AREA	149.41 m ²	1608.24 ft ²

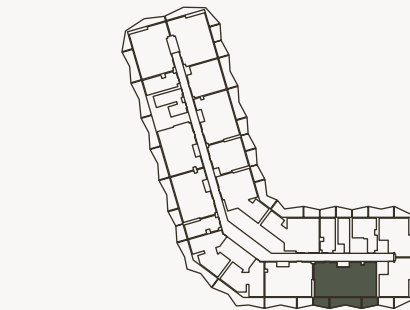
FLAT DESIGN COMPONENTS		
MASTER BATH	4 m ²	
MASTER BEDROOM	21 m ²	
LIVING	13 m ²	
KITCHEN & DINING	14 m ²	
BATH	4 m ²	
BEDROOM	12 m ²	
BEDROOM	13 m ²	
CORRIDOR	9 m ²	
TOILET	4 m ²	
LAUNDRY / STORE	7 m ²	



Disclaimer: 1. All stated dimensions and services whether in relation to the building, common areas or individual units are subject to government and local authority approvals. Final dimensions and services will be stated in your sales and purchase agreement 2. All room dimensions are measured to structural elements and exclude wall finishes and construction tolerances. 3. All dimensions have been provided by our consultant architects. 4. All materials, dimensions and drawings are approximate. Information is subject to change without notice. 5. Actual suite area may vary from the stated area. Drawings are not to scale. The Developer reserves the right to make any revisions whatsoever including for aesthetic purposes.

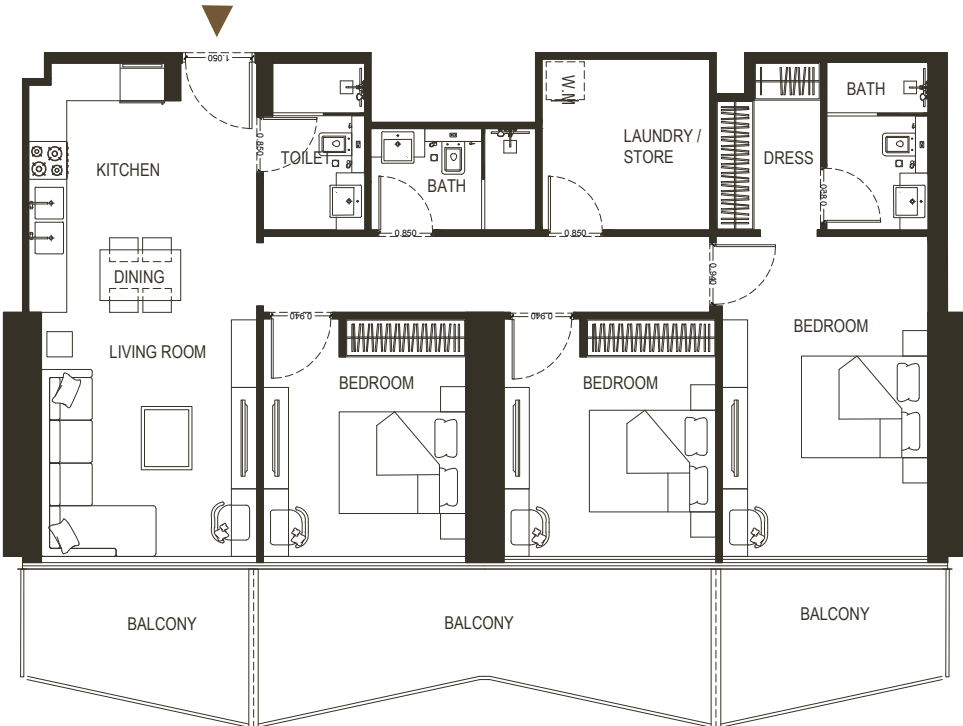
3 BEDROOM

TYPE - 2



AREA	SQ.M	SQ.FT
SUITE AREA	113.18 m ²	1218.25 ft ²
BALCONY AREA	31.53 m ²	339.38 ft ²
TOTAL UNIT AREA	144.71 m ²	1557.64 ft ²

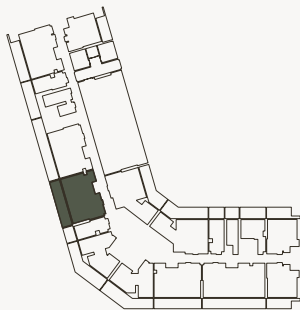
FLAT DESIGN COMPONENTS		
MASTER BATH	4 m ²	
MASTER BEDROOM	21 m ²	
LIVING	13 m ²	
KITCHEN & DINING	14 m ²	
BATH	4 m ²	
BEDROOM	12 m ²	
BEDROOM	13 m ²	
CORRIDOR	9 m ²	
TOILET	4 m ²	
LAUNDRY / STORE	7 m ²	



6. Calculation of suite area is measured as the area bounded by the centre line of demising or partition walls separating one unit from another unit, the exterior face of all exterior walls, and the exterior face of the corridor wall enclosing the adjoining unit. 7. Calculation of balcony area is measured as the area bounded by the centre line of demising or partition walls separating one unit from another unit, the outmost face of the enclosing guard and the external face of the adjoining balcony. 8. The units are measured at typical floor in the building. Columns may vary in size depending on the floor level. 9. For each unit type, unit sizes and details might be different and your sales and purchase agreement will contain the actual size of each specific unit.

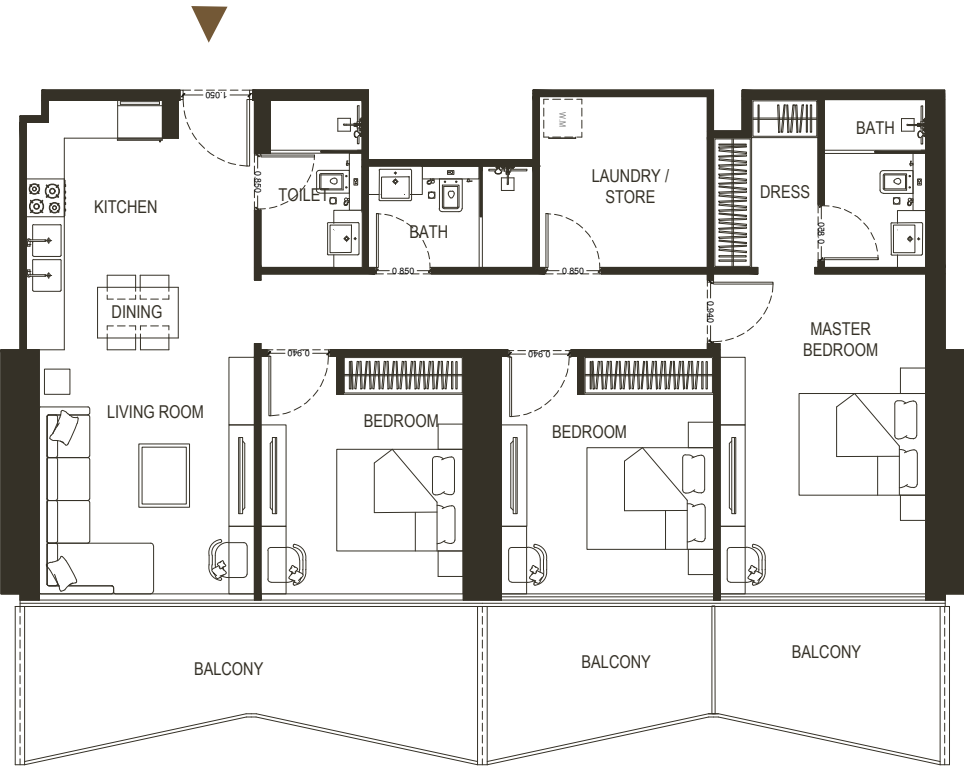
3 BEDROOM

TYPE - 3



AREA	SQ.M	SQ.FT
SUITE AREA	113.18 m ²	1218.25 ft ²
BALCONY AREA	31.52 m ²	339.28 ft ²
TOTAL UNIT AREA	144.70 m ²	1557.53 ft ²

FLAT DESIGN COMPONENTS		
MASTER BATH	4 m ²	
MASTER BEDROOM	21 m ²	
LIVING	13 m ²	
KITCHEN & DINING	14 m ²	
BATH	4 m ²	
BEDROOM	12 m ²	
BEDROOM	13 m ²	
CORRIDOR	9 m ²	
TOILET	4 m ²	
LAUNDRY / STORE	7 m ²	



Disclaimer: 1. All stated dimensions and services whether in relation to the building, common areas or individual units are subject to government and local authority approvals. Final dimensions and services will be stated in your sales and purchase agreement 2. All room dimensions are measured to structural elements and exclude wall finishes and construction tolerances. 3. All dimensions have been provided by our consultant architects. 4. All materials, dimensions and drawings are approximate. Information is subject to change without notice. 5. Actual suite area may vary from the stated area. Drawings are not to scale. The Developer reserves the right to make any revisions whatsoever including for aesthetic purposes.

