



TYPE

# 01 STUDIO

INTERIOR	TOTAL
351 SQ.FT.	433 SQ.FT.

EXTERIOR	FLOORS
82 SQ.FT.	1-11

LAKE VIEW

CITY  
VIEW

COMMUNITY  
PARK

LEVEL 1

CENTRAL PARK

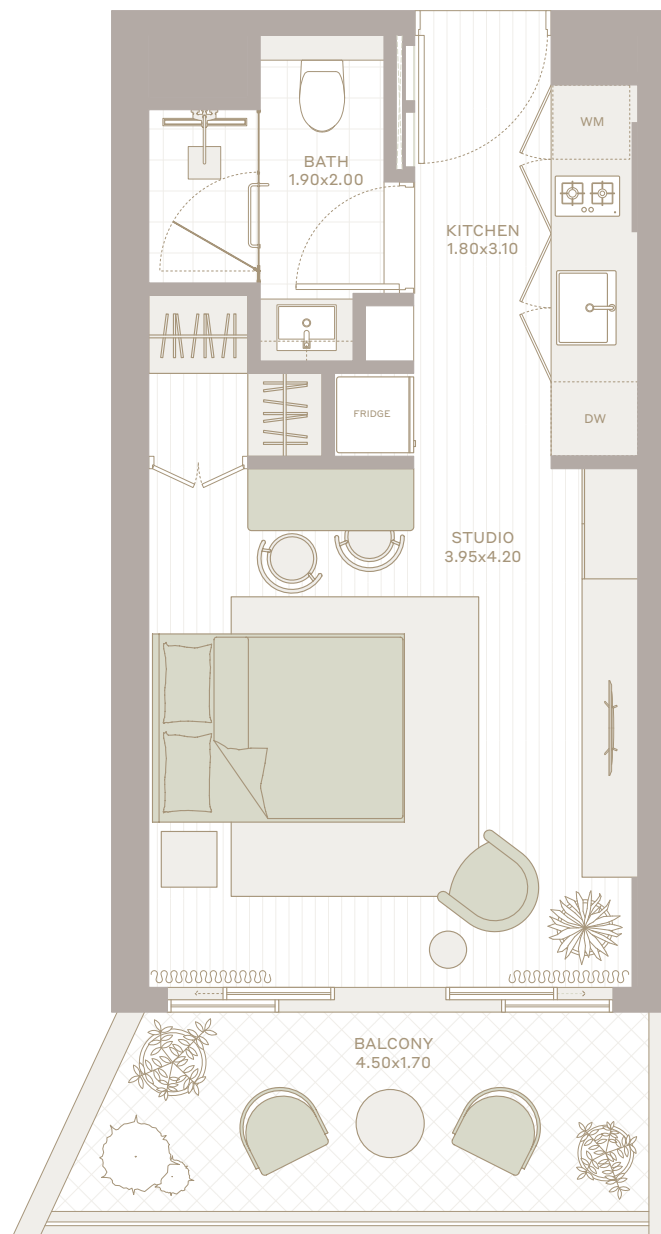
LEVEL 2-5

LEVEL 6-10

TOWER  
A

TOWER  
B

LEVEL 11



All the dimensions are in square feet. The Unit shown is typical, and actual Unit may vary in dimensions, areas, layout, material specification, orientation, and location. Some of the Units may have a mirrored layout of the above plan. Unit Windows, Façade, Balcony door location, Fixtures, Kitchen Cabinets, Sanitary ware, and Wardrobes, including each of their location as shown in the plan is indicative and subject to revision by the Seller. All fixtures, fittings, goods, accessories, and furniture reflected/displayed in this plan(s) are strictly illustrative and representational (not actual) in nature and are only for the purpose of illustrating /reflecting one of the possible layouts which the Purchaser could arrange after the Unit is handed over and do not form part of the Unit. No furniture, goods, accessories are included in the sale, unless such items are specifically included in Schedule A of the SPA.



TYPE

# 1A

1 BHK

INTERIOR  
599 SQ.FT.

TOTAL  
689 SQ.FT.

EXTERIOR  
90 SQ.FT.

FLOORS  
2-11

LAKE VIEW

CITY  
VIEW

COMMUNITY  
PARK

LEVEL 2-5

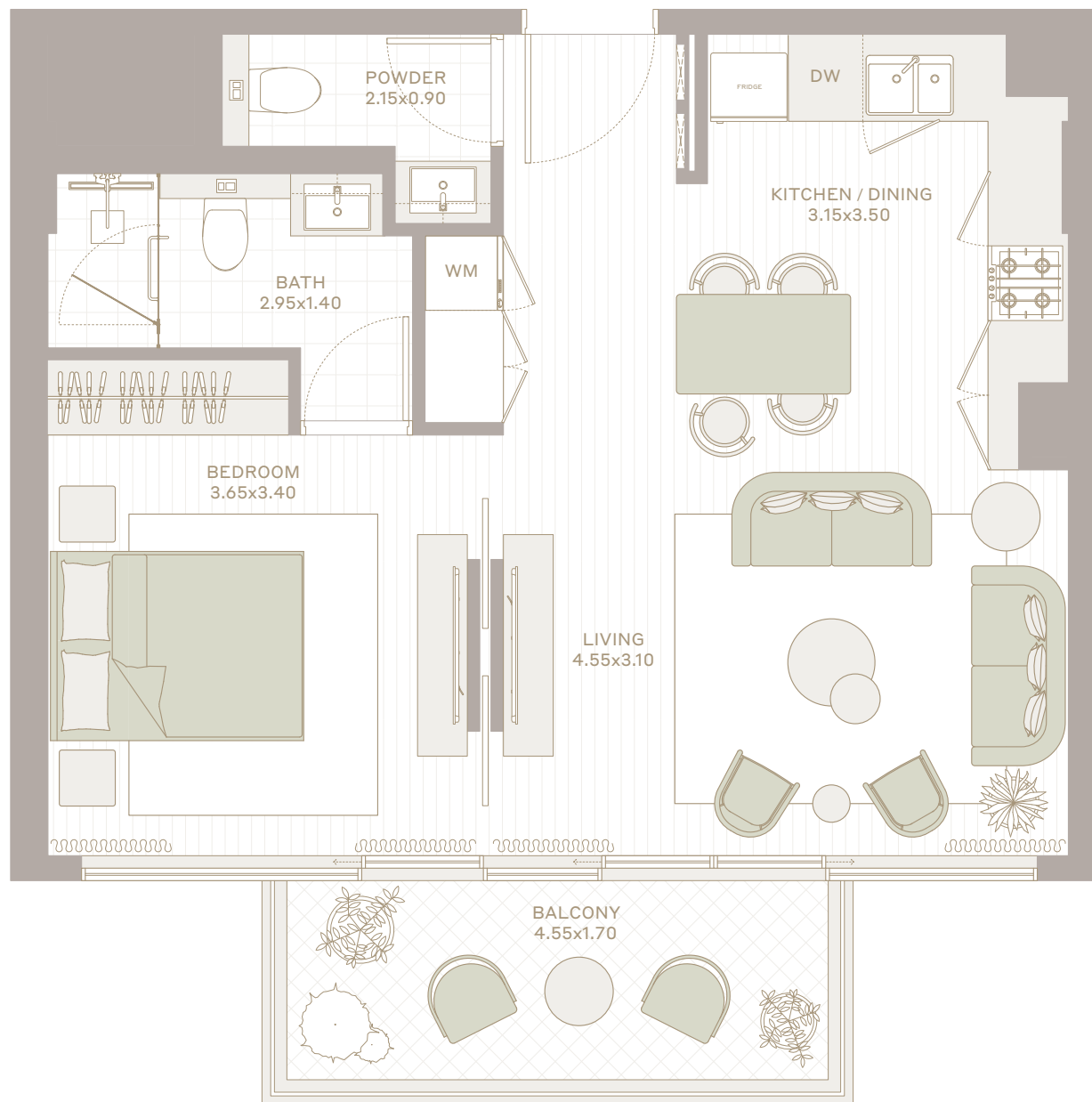
CENTRAL PARK

LEVEL 6-10

TOWER  
A

TOWER  
B

LEVEL 11



All the dimensions are in square feet. The Unit shown is typical, and actual Unit may vary in dimensions, areas, layout, material specification, orientation, and location. Some of the Units may have a mirrored layout of the above plan. Unit Windows, Façade, Balcony door location, Fixtures, Kitchen Cabinets, Sanitary ware, and Wardrobes, including each of their location as shown in the plan is indicative and subject to revision by the Seller. All fixtures, fittings, goods, accessories, and furniture reflected/displayed in this plan(s) are strictly illustrative and representational (not actual) in nature and are only for the purpose of illustrating /reflecting one of the possible layouts which the Purchaser could arrange after the Unit is handed over and do not form part of the Unit. No furniture, goods, accessories are included in the sale, unless such items are specifically included in Schedule A of the SPA.



TYPE

# 1B

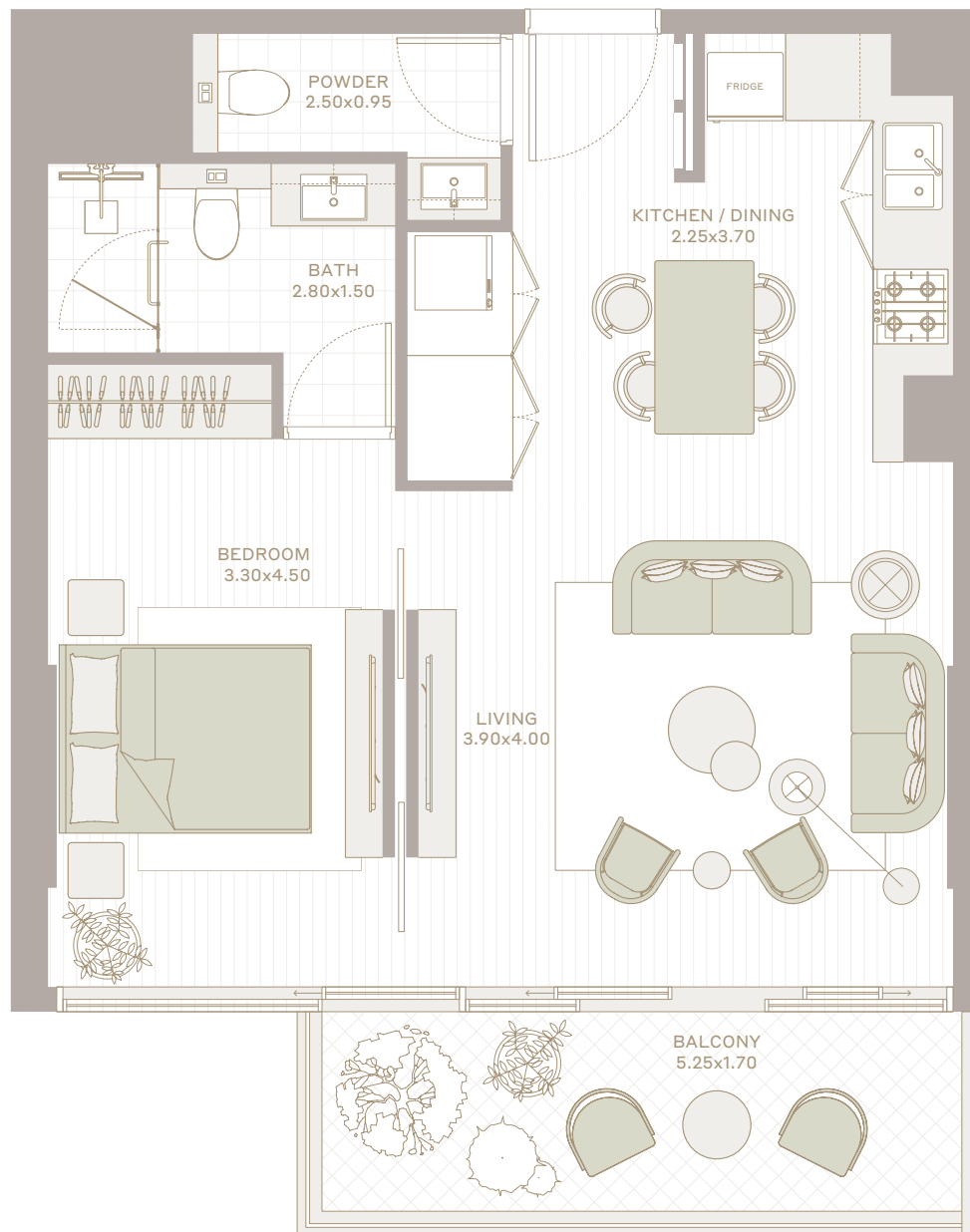
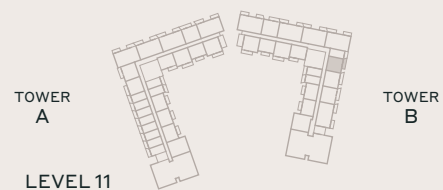
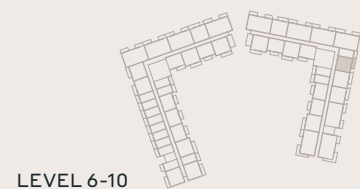
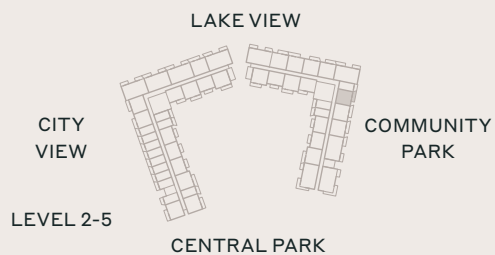
1 BHK

INTERIOR  
626 SQ.FT.

TOTAL  
735 SQ.FT.

EXTERIOR  
109 SQ.FT.

FLOORS  
2-11



All the dimensions are in square feet. The Unit shown is typical, and actual Unit may vary in dimensions, areas, layout, material specification, orientation, and location. Some of the Units may have a mirrored layout of the above plan. Unit Windows, Façade, Balcony door location, Fixtures, Kitchen Cabinets, Sanitary ware, and Wardrobes, including each of their location as shown in the plan is indicative and subject to revision by the Seller. All fixtures, fittings, goods, accessories, and furniture reflected/displayed in this plan(s) are strictly illustrative and representational (not actual) in nature and are only for the purpose of illustrating /reflecting one of the possible layouts which the Purchaser could arrange after the Unit is handed over and do not form part of the Unit. No furniture, goods, accessories are included in the sale, unless such items are specifically included in Schedule A of the SPA.



TYPE

# 2A

## 1 BHK

INTERIOR	TOTAL
699 SQ.FT.	817 SQ.FT.

EXTERIOR	FLOORS
118 SQ.FT.	2-11

LAKE VIEW

CITY  
VIEWCOMMUNITY  
PARK

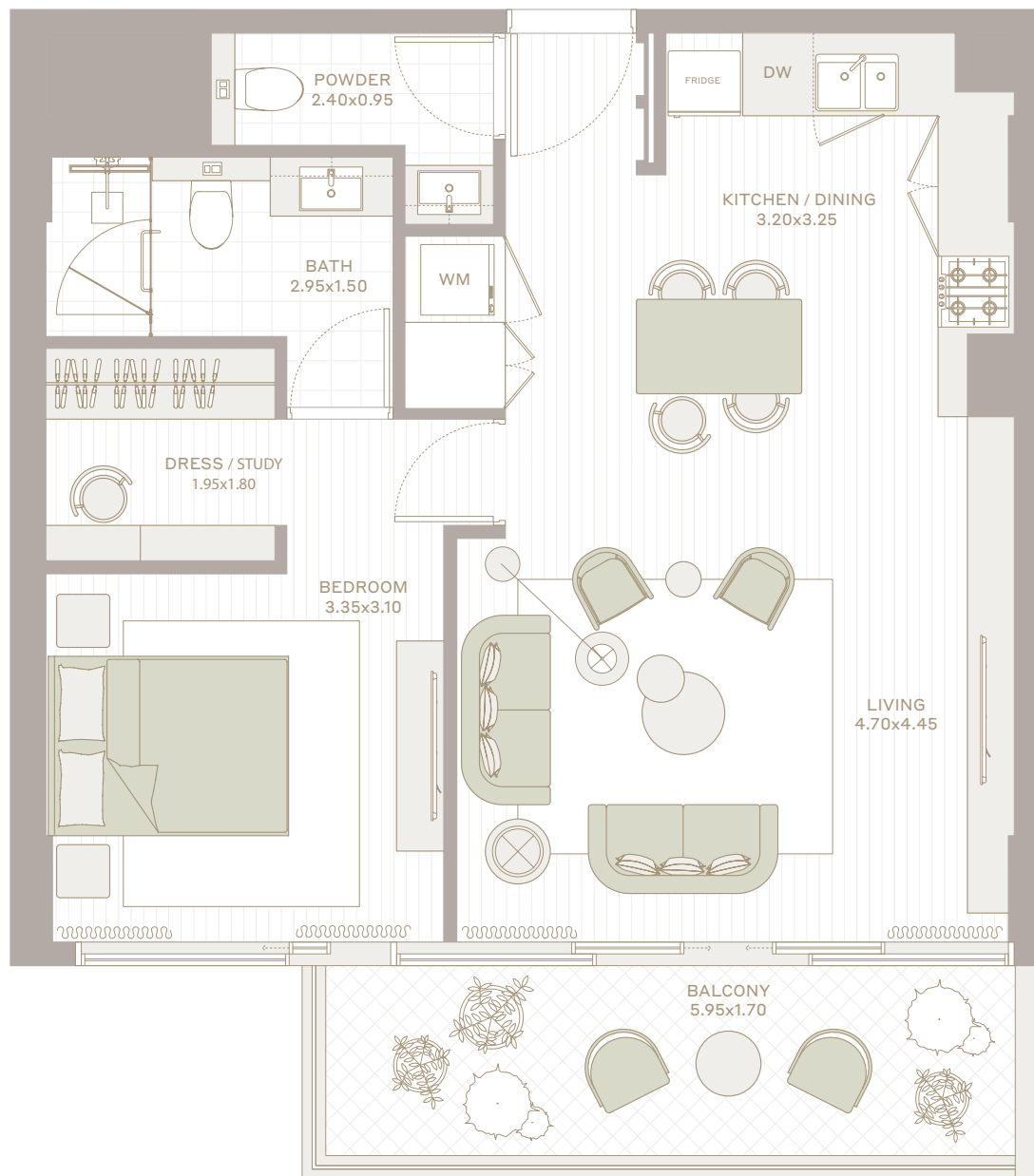
LEVEL 2-5

CENTRAL PARK

LEVEL 6-10

TOWER  
ATOWER  
B

LEVEL 11



All the dimensions are in square feet. The Unit shown is typical, and actual Unit may vary in dimensions, areas, layout, material specification, orientation, and location. Some of the Units may have a mirrored layout of the above plan. Unit Windows, Façade, Balcony door location, Fixtures, Kitchen Cabinets, Sanitary ware, and Wardrobes, including each of their location as shown in the plan is indicative and subject to revision by the Seller. All fixtures, fittings, goods, accessories, and furniture reflected/displayed in this plan(s) are strictly illustrative and representational (not actual) in nature and are only for the purpose of illustrating /reflecting one of the possible layouts which the Purchaser could arrange after the Unit is handed over and do not form part of the Unit. No furniture, goods, accessories are included in the sale, unless such items are specifically included in Schedule A of the SPA.





TYPE

# 2B

1 BHK

INTERIOR  
665 SQ.FT.

TOTAL  
778 SQ.FT.

EXTERIOR  
113 SQ.FT.

FLOORS  
1-11

LAKE VIEW

CITY  
VIEW

COMMUNITY  
PARK

LEVEL 1

CENTRAL PARK

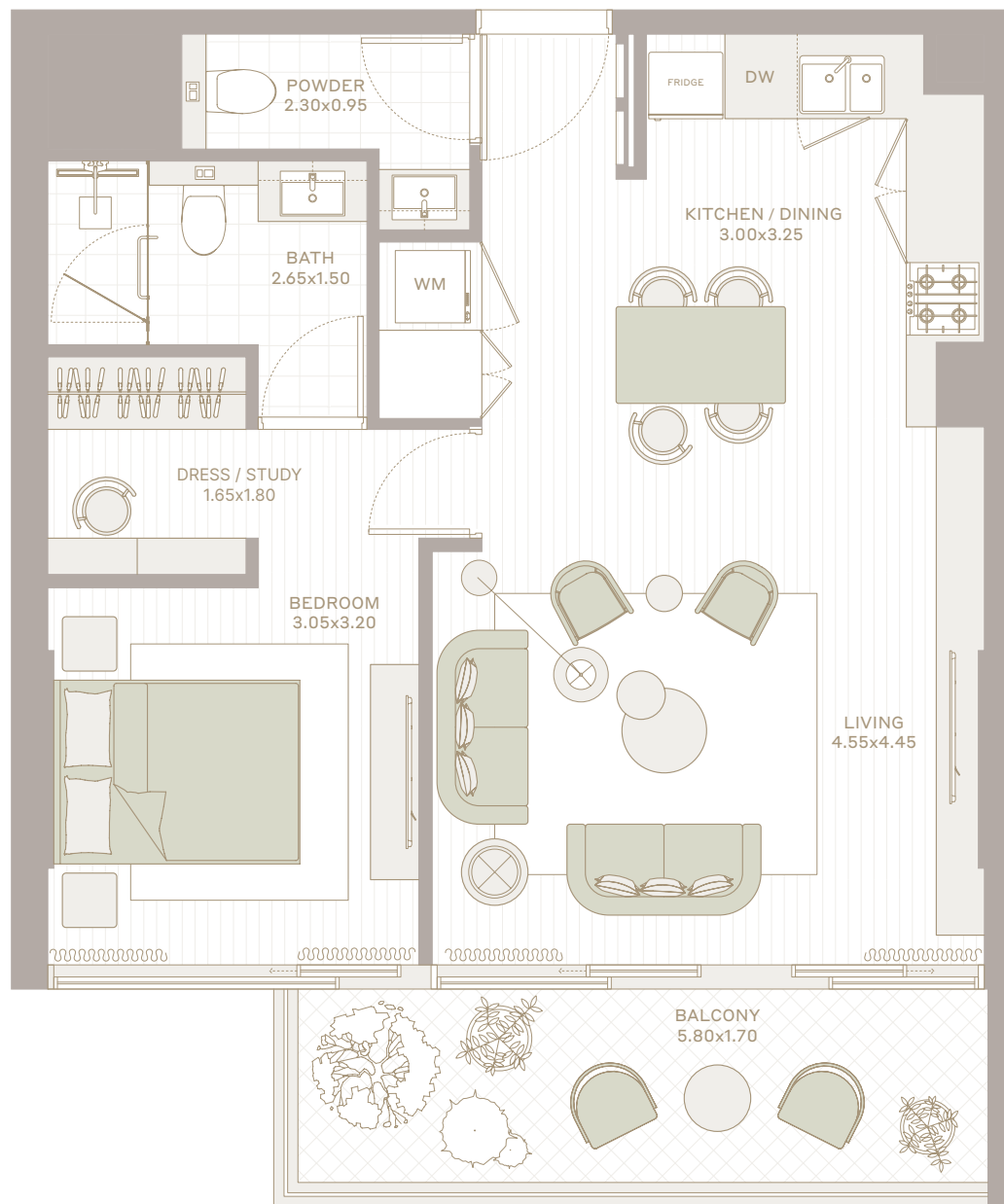
LEVEL 2-5

LEVEL 6-10

TOWER  
A

TOWER  
B

LEVEL 11



All the dimensions are in square feet. The Unit shown is typical, and actual Unit may vary in dimensions, areas, layout, material specification, orientation, and location. Some of the Units may have a mirrored layout of the above plan. Unit Windows, Façade, Balcony door location, Fixtures, Kitchen Cabinets, Sanitary ware, and Wardrobes, including each of their location as shown in the plan is indicative and subject to revision by the Seller. All fixtures, fittings, goods, accessories, and furniture reflected/displayed in this plan(s) are strictly illustrative and representational (not actual) in nature and are only for the purpose of illustrating /reflecting one of the possible layouts which the Purchaser could arrange after the Unit is handed over and do not form part of the Unit. No furniture, goods, accessories are included in the sale, unless such items are specifically included in Schedule A of the SPA.



TYPE

# 2C

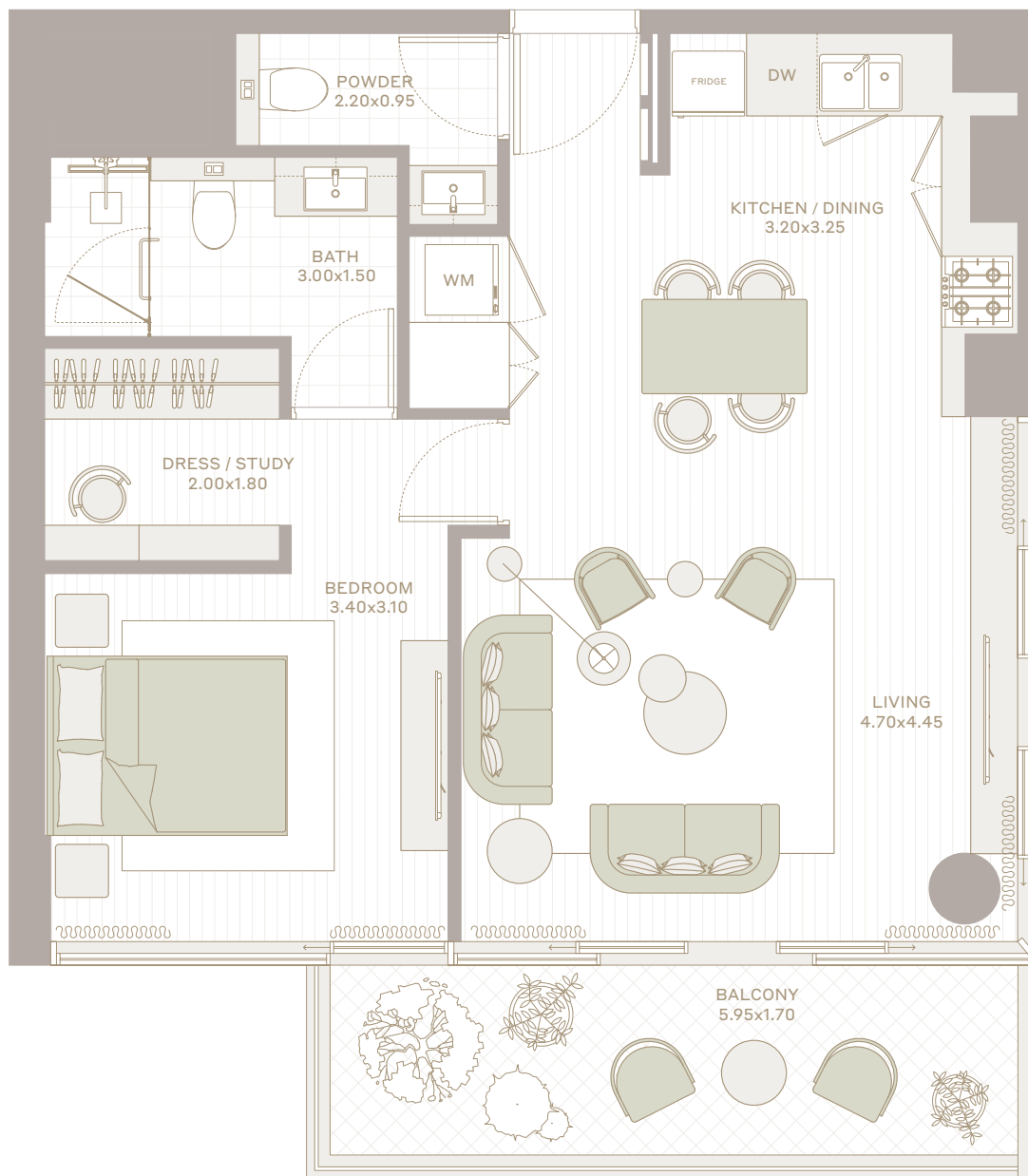
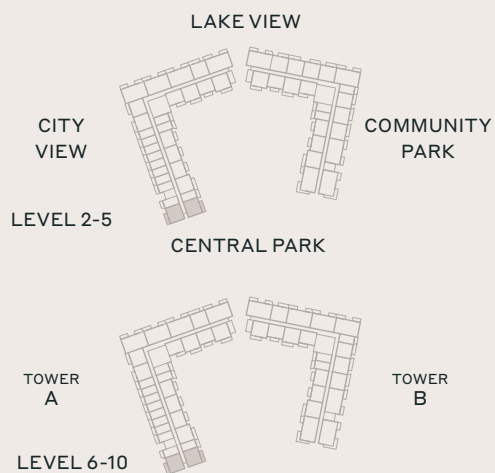
1 BHK

INTERIOR  
697 SQ.FT.

TOTAL  
812 SQ.FT.

EXTERIOR  
115 SQ.FT.

FLOORS  
2-10



All the dimensions are in square feet. The Unit shown is typical, and actual Unit may vary in dimensions, areas, layout, material specification, orientation, and location. Some of the Units may have a mirrored layout of the above plan. Unit Windows, Façade, Balcony door location, Fixtures, Kitchen Cabinets, Sanitary ware, and Wardrobes, including each of their location as shown in the plan is indicative and subject to revision by the Seller. All fixtures, fittings, goods, accessories, and furniture reflected/displayed in this plan(s) are strictly illustrative and representational (not actual) in nature and are only for the purpose of illustrating /reflecting one of the possible layouts which the Purchaser could arrange after the Unit is handed over and do not form part of the Unit. No furniture, goods, accessories are included in the sale, unless such items are specifically included in Schedule A of the SPA.



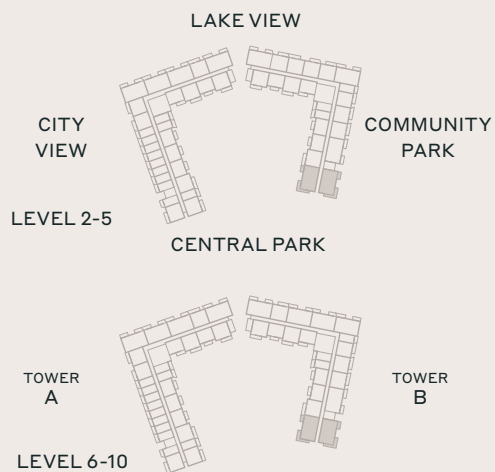
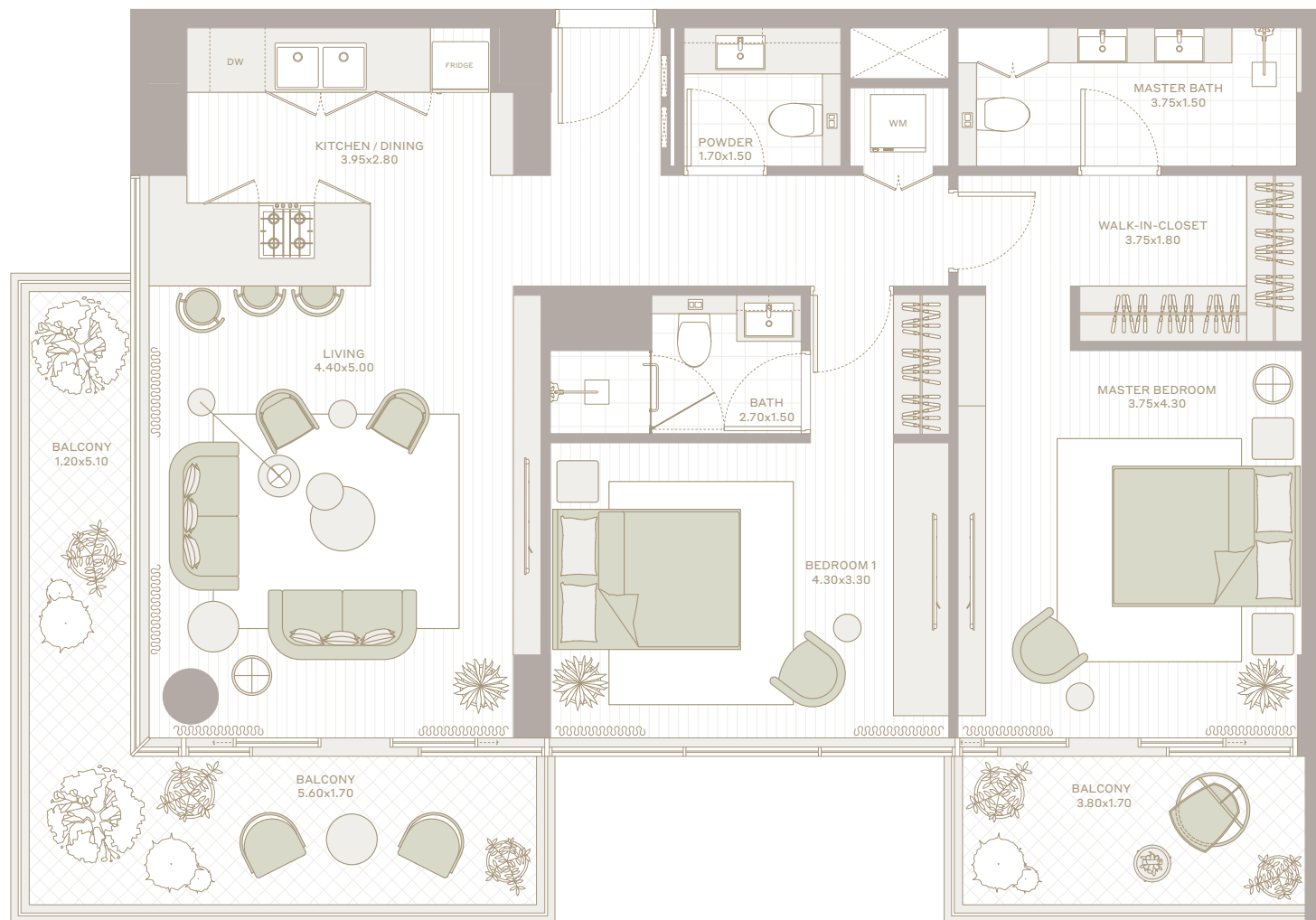
TYPE

1A

2 BHK

INTERIOR	TOTAL
1,061 SQ.FT.	1,311 SQ.FT.

EXTERIOR	FLOORS
250 SQ.FT.	2-10



All the dimensions are in square feet. The Unit shown is typical, and actual Unit may vary in dimensions, areas, layout, material specification, orientation, and location. Some of the Units may have a mirrored layout of the above plan. Unit Windows, Façade, Balcony door location, Fixtures, Kitchen Cabinets, Sanitary ware, and Wardrobes, including each of their location as shown in the plan is indicative and subject to revision by the Seller. All fixtures, fittings, goods, accessories, and furniture reflected/displayed in this plan(s) are strictly illustrative and representational (not actual) in nature and are only for the purpose of illustrating /reflecting one of the possible layouts which the Purchaser could arrange after the Unit is handed over and do not form part of the Unit. No furniture, goods, accessories are included in the sale, unless such items are specifically included in Schedule A of the SPA.



TYPE

# 2A

2 BHK

INTERIOR  
1,054 SQ.FT.

TOTAL  
1,227 SQ.FT.

EXTERIOR  
174 SQ.FT.

FLOORS  
2-11

LAKE VIEW

CITY  
VIEWCOMMUNITY  
PARK

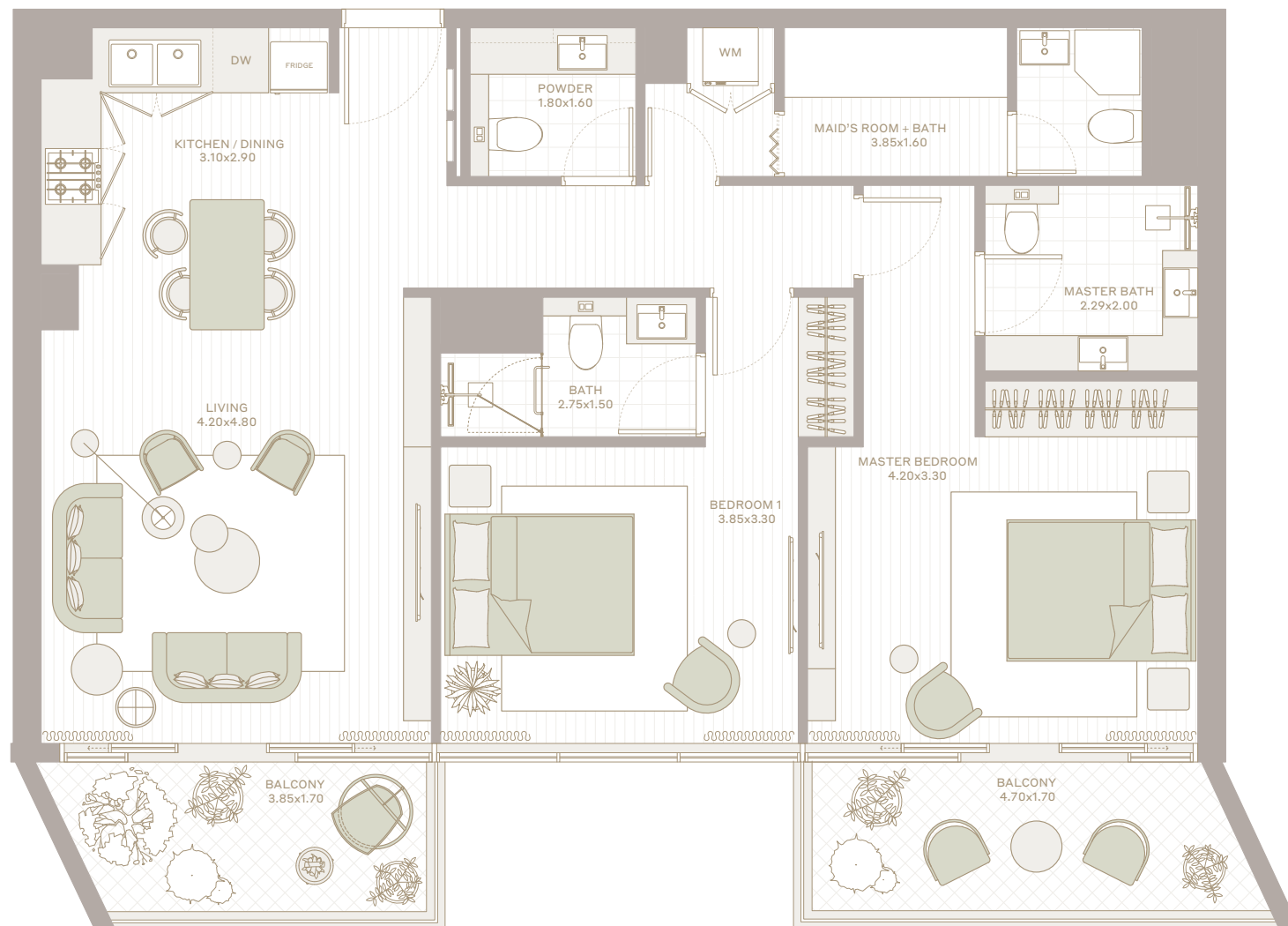
LEVEL 2-5

CENTRAL PARK

LEVEL 6-10

TOWER  
ATOWER  
B

LEVEL 11



All the dimensions are in square feet. The Unit shown is typical, and actual Unit may vary in dimensions, areas, layout, material specification, orientation, and location. Some of the Units may have a mirrored layout of the above plan. Unit Windows, Façade, Balcony door location, Fixtures, Kitchen Cabinets, Sanitary ware, and Wardrobes, including each of their location as shown in the plan is indicative and subject to revision by the Seller. All fixtures, fittings, goods, accessories, and furniture reflected/displayed in this plan(s) are strictly illustrative and representational (not actual) in nature and are only for the purpose of illustrating /reflecting one of the possible layouts which the Purchaser could arrange after the Unit is handed over and do not form part of the Unit. No furniture, goods, accessories are included in the sale, unless such items are specifically included in Schedule A of the SPA.



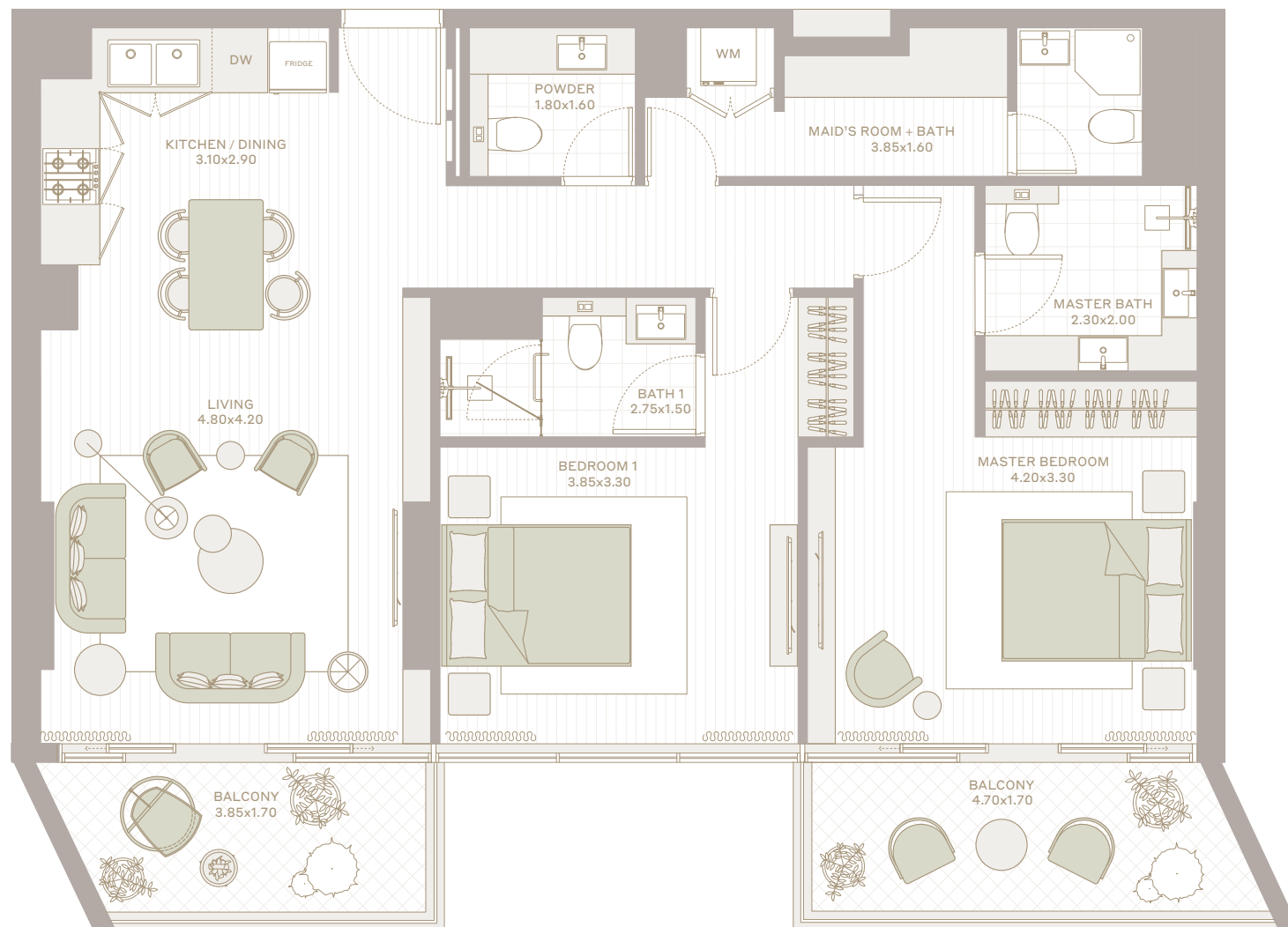
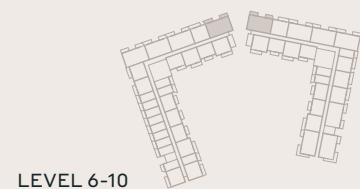
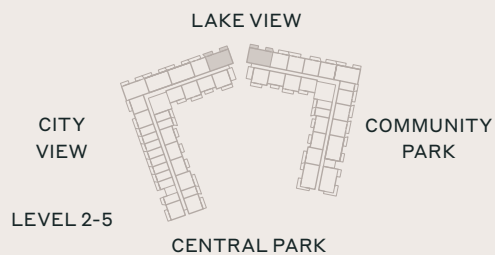
TYPE

# 2B

## 2 BHK

INTERIOR	TOTAL
1,048 SQ.FT.	1,219 SQ.FT.

EXTERIOR	FLOORS
170 SQ.FT.	2-11



All the dimensions are in square feet. The Unit shown is typical, and actual Unit may vary in dimensions, areas, layout, material specification, orientation, and location. Some of the Units may have a mirrored layout of the above plan. Unit Windows, Façade, Balcony door location, Fixtures, Kitchen Cabinets, Sanitary ware, and Wardrobes, including each of their location as shown in the plan is indicative and subject to revision by the Seller. All fixtures, fittings, goods, accessories, and furniture reflected/displayed in this plan(s) are strictly illustrative and representational (not actual) in nature and are only for the purpose of illustrating /reflecting one of the possible layouts which the Purchaser could arrange after the Unit is handed over and do not form part of the Unit. No furniture, goods, accessories are included in the sale, unless such items are specifically included in Schedule A of the SPA.



TYPE

03

2 BHK

INTERIOR	TOTAL
1,064 SQ.FT.	1,238 SQ.FT.

EXTERIOR	FLOORS
174 SQ.FT.	2-11

LAKE VIEW

CITY  
VIEWCOMMUNITY  
PARK

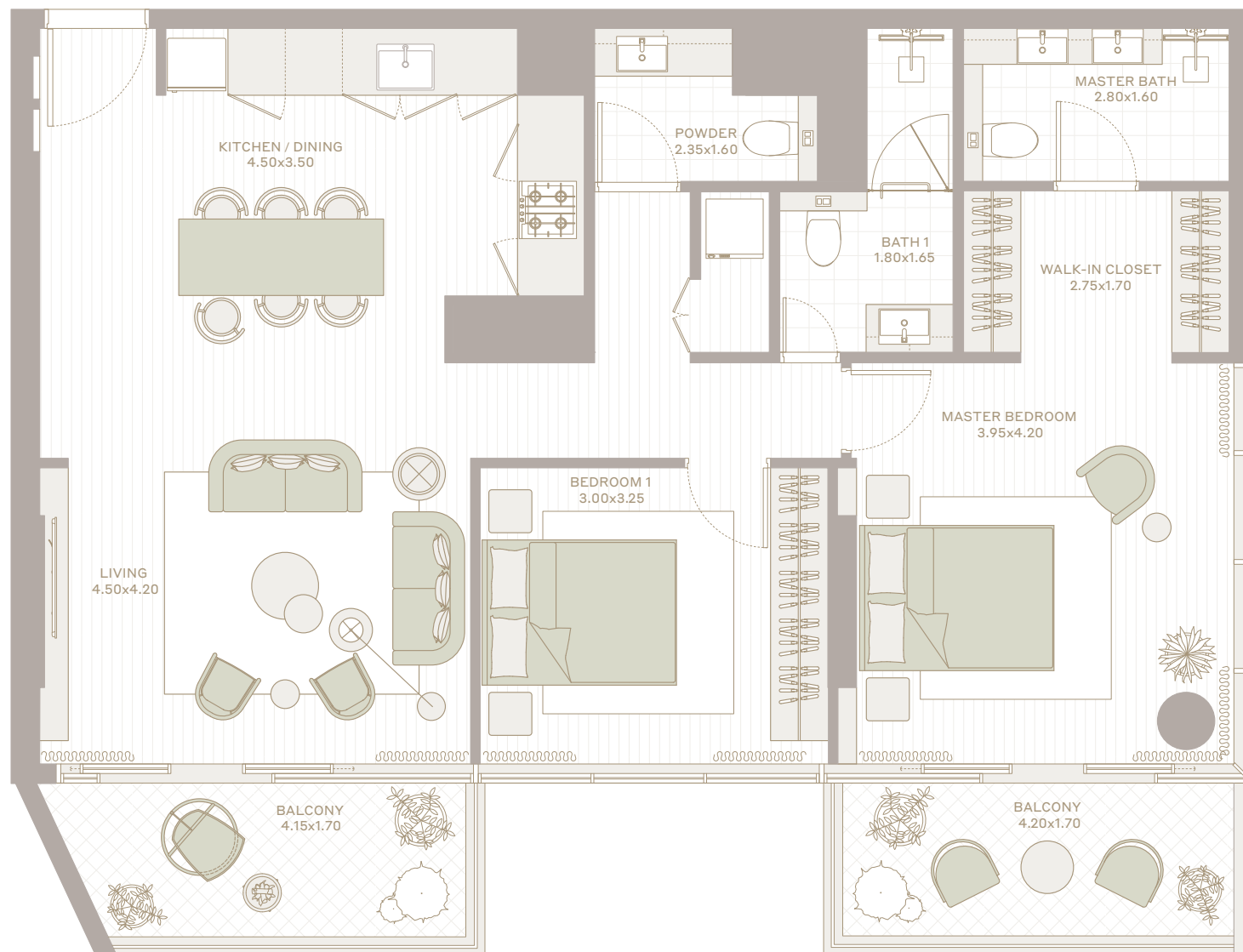
LEVEL 2-5

CENTRAL PARK

LEVEL 6-10

TOWER  
ATOWER  
B

LEVEL 11



All the dimensions are in square feet. The Unit shown is typical, and actual Unit may vary in dimensions, areas, layout, material specification, orientation, and location. Some of the Units may have a mirrored layout of the above plan. Unit Windows, Façade, Balcony door location, Fixtures, Kitchen Cabinets, Sanitary ware, and Wardrobes, including each of their location as shown in the plan is indicative and subject to revision by the Seller. All fixtures, fittings, goods, accessories, and furniture reflected/displayed in this plan(s) are strictly illustrative and representational (not actual) in nature and are only for the purpose of illustrating /reflecting one of the possible layouts which the Purchaser could arrange after the Unit is handed over and do not form part of the Unit. No furniture, goods, accessories are included in the sale, unless such items are specifically included in Schedule A of the SPA.



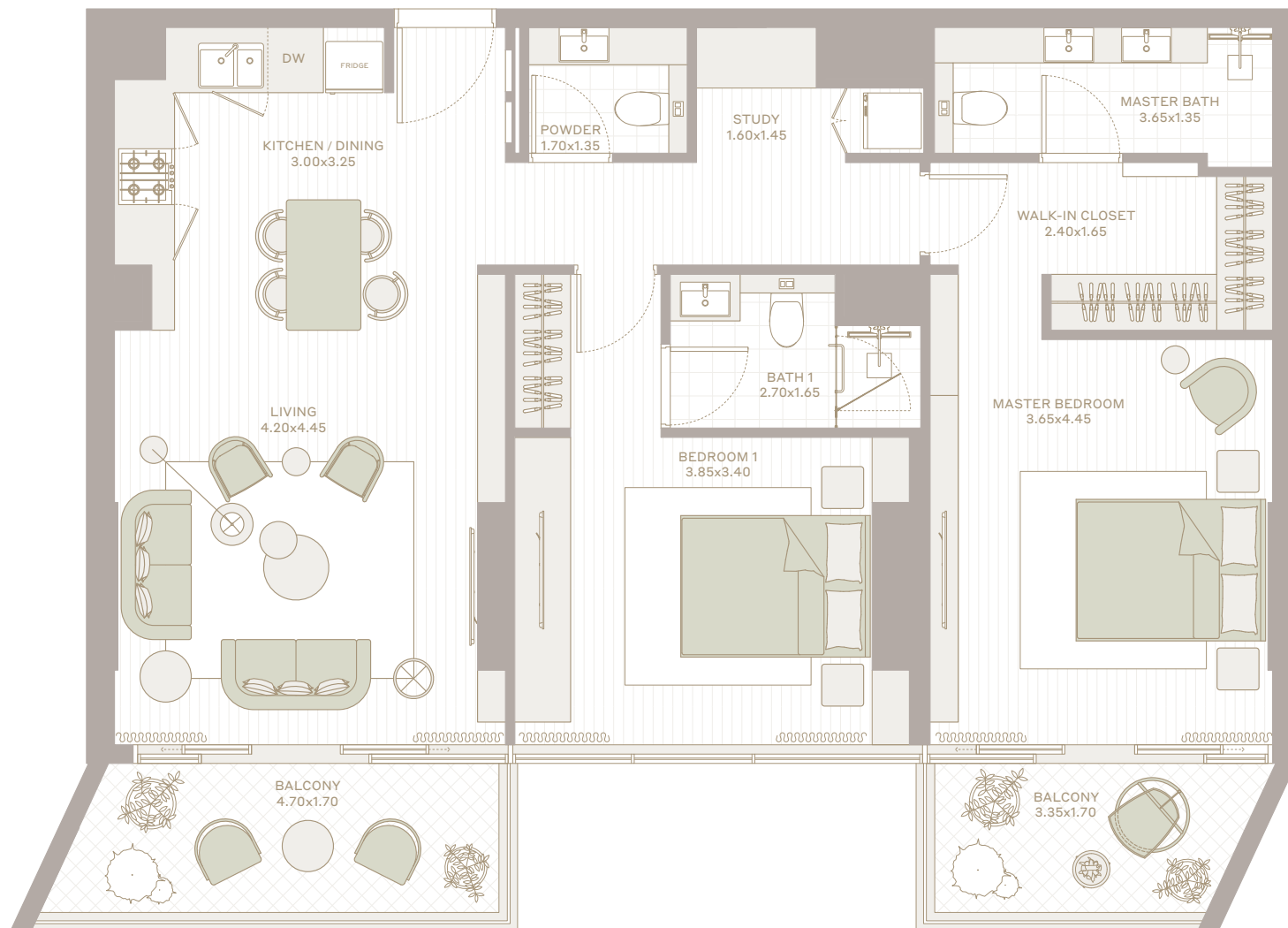
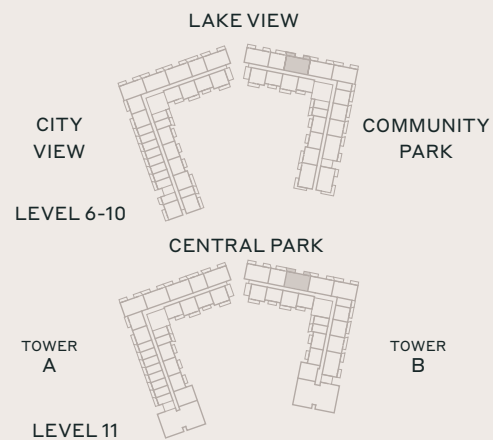
TYPE

# 4A

## 2 BHK

INTERIOR	TOTAL
1,062 SQ.FT.	1,223 SQ.FT.

EXTERIOR	FLOORS
160 SQ.FT.	6-11



All the dimensions are in square feet. The Unit shown is typical, and actual Unit may vary in dimensions, areas, layout, material specification, orientation, and location. Some of the Units may have a mirrored layout of the above plan. Unit Windows, Façade, Balcony door location, Fixtures, Kitchen Cabinets, Sanitary ware, and Wardrobes, including each of their location as shown in the plan is indicative and subject to revision by the Seller. All fixtures, fittings, goods, accessories, and furniture reflected/displayed in this plan(s) are strictly illustrative and representational (not actual) in nature and are only for the purpose of illustrating /reflecting one of the possible layouts which the Purchaser could arrange after the Unit is handed over and do not form part of the Unit. No furniture, goods, accessories are included in the sale, unless such items are specifically included in Schedule A of the SPA.





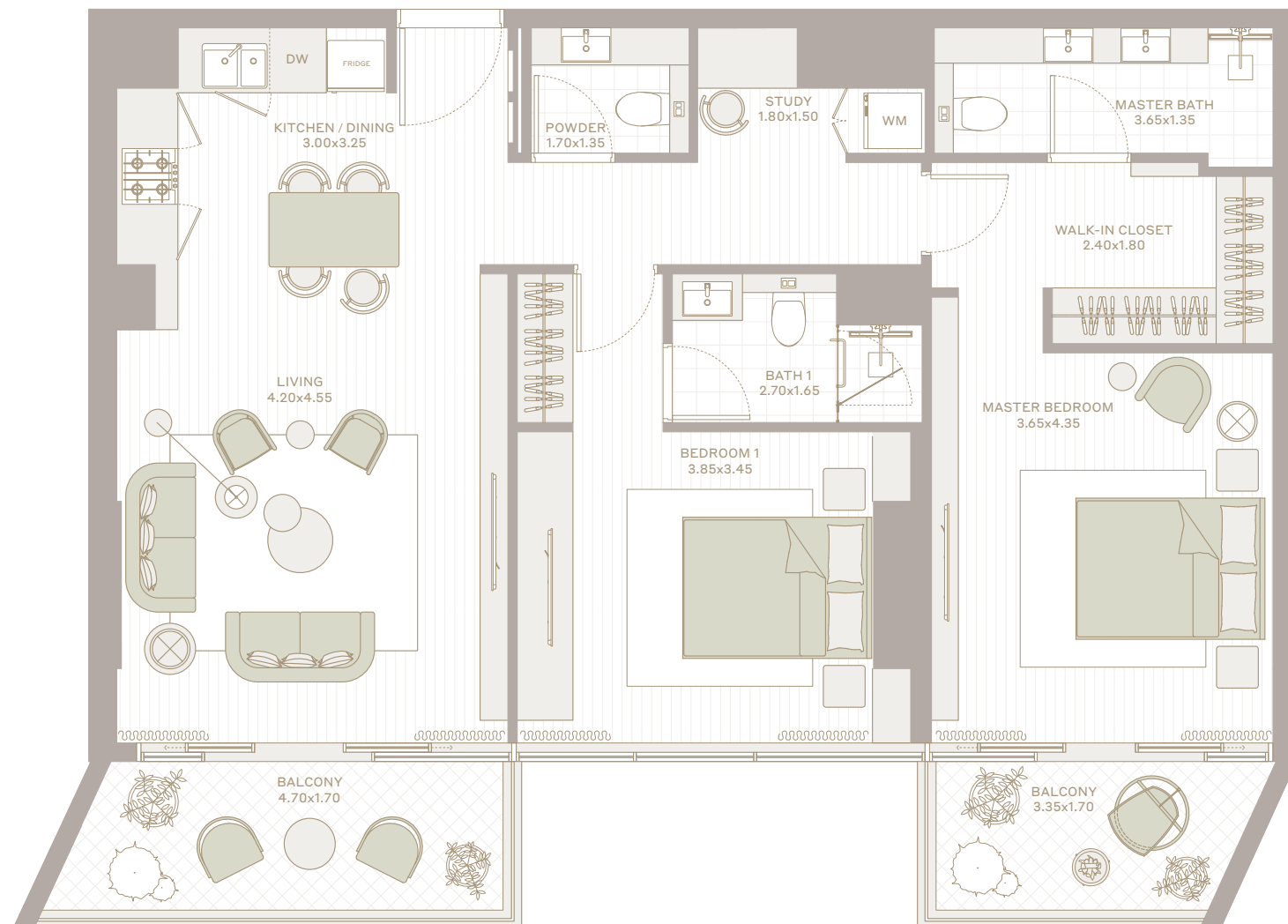
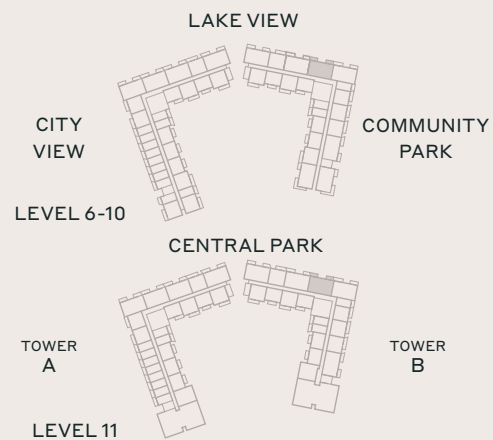
TYPE

4B

2 BHK

INTERIOR	TOTAL
1,059 SQ.FT.	1,220 SQ.FT.

EXTERIOR	FLOORS
161 SQ.FT.	6-11



All the dimensions are in square feet. The Unit shown is typical, and actual Unit may vary in dimensions, areas, layout, material specification, orientation, and location. Some of the Units may have a mirrored layout of the above plan. Unit Windows, Façade, Balcony door location, Fixtures, Kitchen Cabinets, Sanitary ware, and Wardrobes, including each of their location as shown in the plan is indicative and subject to revision by the Seller. All fixtures, fittings, goods, accessories, and furniture reflected/displayed in this plan(s) are strictly illustrative and representational (not actual) in nature and are only for the purpose of illustrating /reflecting one of the possible layouts which the Purchaser could arrange after the Unit is handed over and do not form part of the Unit. No furniture, goods, accessories are included in the sale, unless such items are specifically included in Schedule A of the SPA.



# EMBER

AT PARKFIVE

FLOOR PLANS





TYPE

# 01 STUDIO

INTERIOR  
350 SQ.FT.

TOTAL  
433 SQ.FT.

EXTERIOR  
82 SQ.FT.

FLOORS  
1-11

LAKE VIEW

COMMUNITY  
PARK

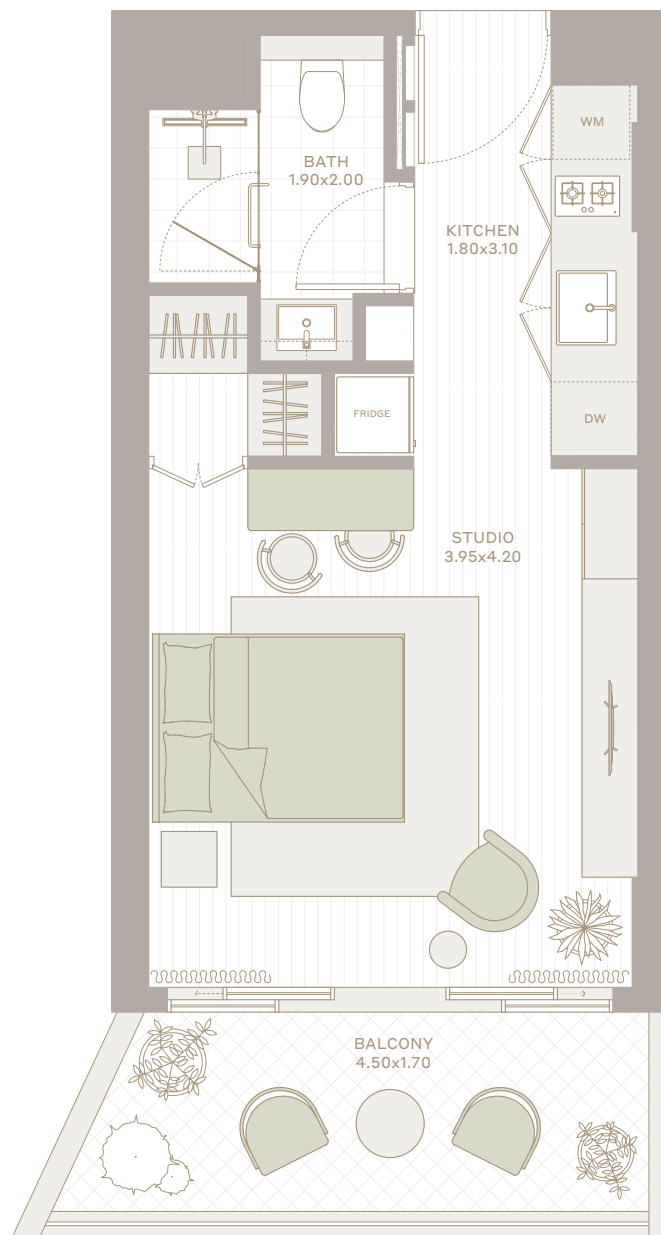
COMMUNITY  
PARK

LEVEL 1

CENTRAL PARK

LEVEL 2-10

LEVEL 11



All the dimensions are in square feet. The Unit shown is typical, and actual Unit may vary in dimensions, areas, layout, material specification, orientation, and location. Some of the Units may have a mirrored layout of the above plan. Unit Windows, Façade, Balcony door location, Fixtures, Kitchen Cabinets, Sanitary ware, and Wardrobes, including each of their location as shown in the plan is indicative and subject to revision by the Seller. All fixtures, fittings, goods, accessories, and furniture reflected/displayed in this plan(s) are strictly illustrative and representational (not actual) in nature and are only for the purpose of illustrating /reflecting one of the possible layouts which the Purchaser could arrange after the Unit is handed over and do not form part of the Unit. No furniture, goods, accessories are included in the sale, unless such items are specifically included in Schedule A of the SPA.



TYPE

1A  
1 BHK

INTERIOR  
599 SQ.FT.

TOTAL  
687 SQ.FT.

EXTERIOR  
88 SQ.FT.

FLOORS  
2-11

LAKE VIEW

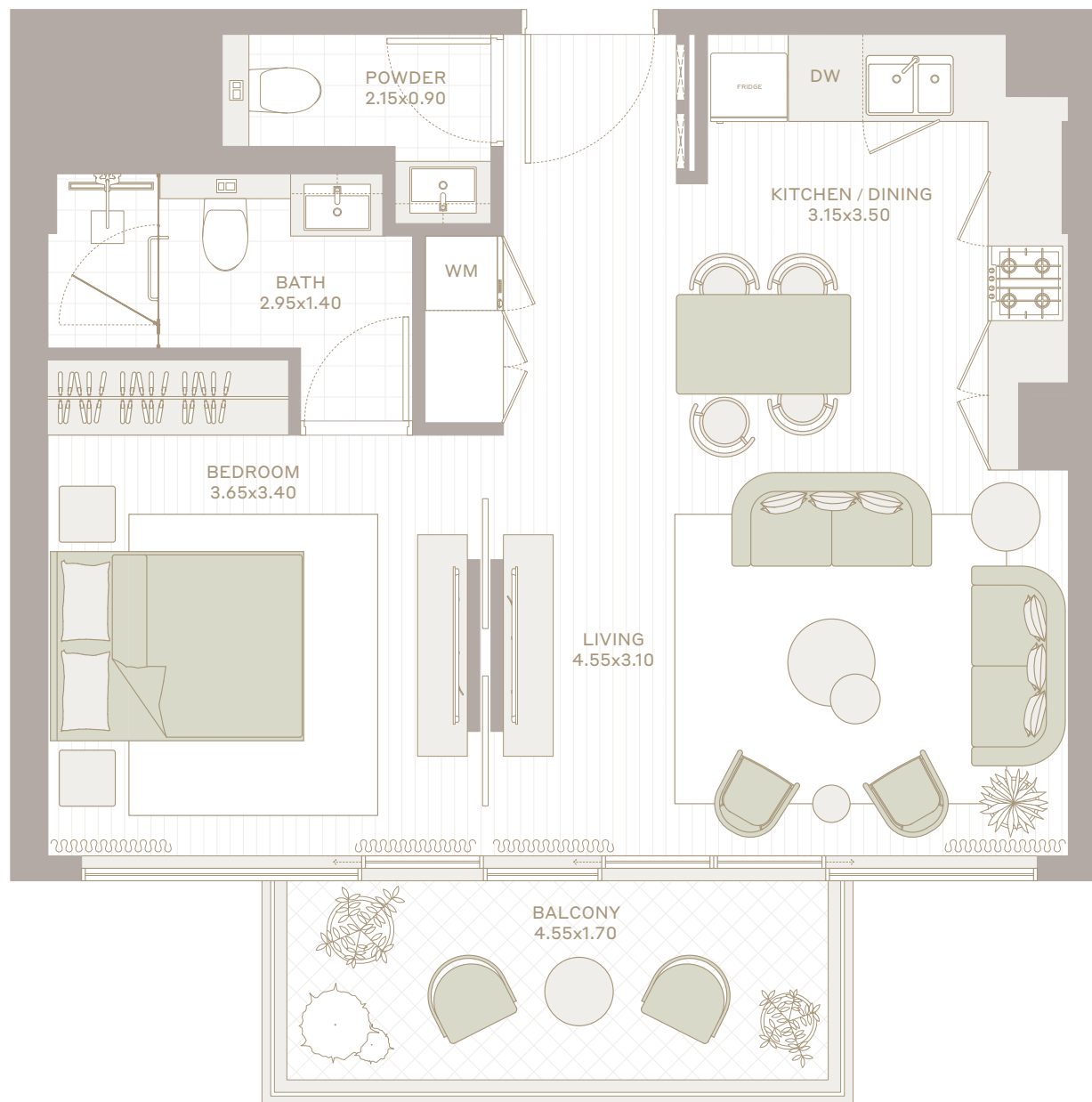
COMMUNITY  
PARK

LEVEL 2-10

CENTRAL PARK

COMMUNITY  
PARK

LEVEL 11



All the dimensions are in square feet. The Unit shown is typical, and actual Unit may vary in dimensions, areas, layout, material specification, orientation, and location. Some of the Units may have a mirrored layout of the above plan. Unit Windows, Façade, Balcony door location, Fixtures, Kitchen Cabinets, Sanitary ware, and Wardrobes, including each of their location as shown in the plan is indicative and subject to revision by the Seller. All fixtures, fittings, goods, accessories, and furniture reflected/displayed in this plan(s) are strictly illustrative and representational (not actual) in nature and are only for the purpose of illustrating /reflecting one of the possible layouts which the Purchaser could arrange after the Unit is handed over and do not form part of the Unit. No furniture, goods, accessories are included in the sale, unless such items are specifically included in Schedule A of the SPA.



TYPE

# 2A

1 BHK

INTERIOR  
700 SQ.FT.

TOTAL  
817 SQ.FT.

EXTERIOR  
118 SQ.FT.

FLOORS  
1-11

LAKE VIEW

COMMUNITY  
PARK

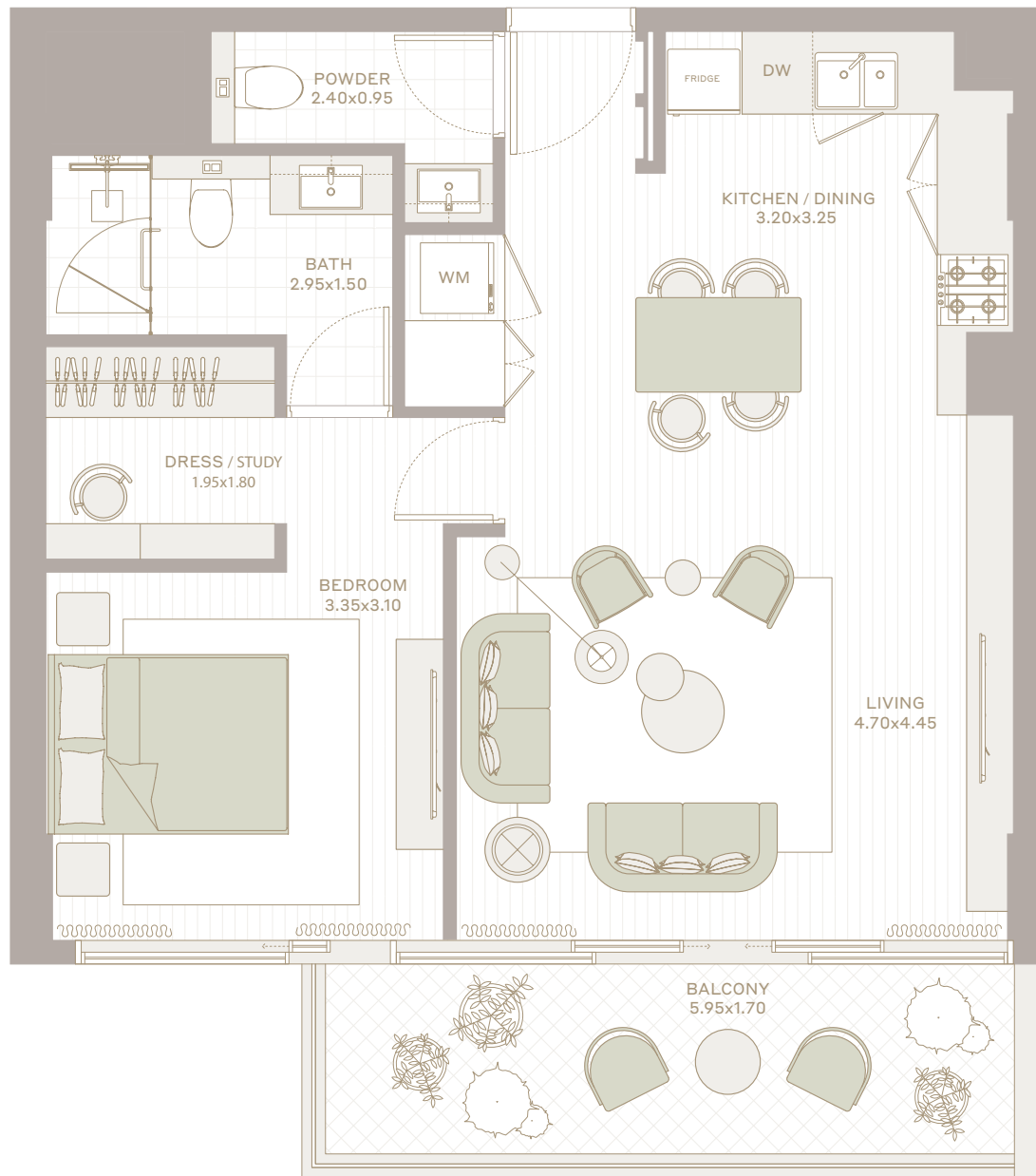
COMMUNITY  
PARK

LEVEL 1

CENTRAL PARK

LEVEL 2-10

LEVEL 11



All the dimensions are in square feet. The Unit shown is typical, and actual Unit may vary in dimensions, areas, layout, material specification, orientation, and location. Some of the Units may have a mirrored layout of the above plan. Unit Windows, Façade, Balcony door location, Fixtures, Kitchen Cabinets, Sanitary ware, and Wardrobes, including each of their location as shown in the plan is indicative and subject to revision by the Seller. All fixtures, fittings, goods, accessories, and furniture reflected/displayed in this plan(s) are strictly illustrative and representational (not actual) in nature and are only for the purpose of illustrating /reflecting one of the possible layouts which the Purchaser could arrange after the Unit is handed over and do not form part of the Unit. No furniture, goods, accessories are included in the sale, unless such items are specifically included in Schedule A of the SPA.



TYPE

# 1B

2 BHK

INTERIOR  
1,061 SQ.FT.

TOTAL  
1,214 SQ.FT.

EXTERIOR  
153 SQ.FT.

FLOORS  
2-11

LAKE VIEW

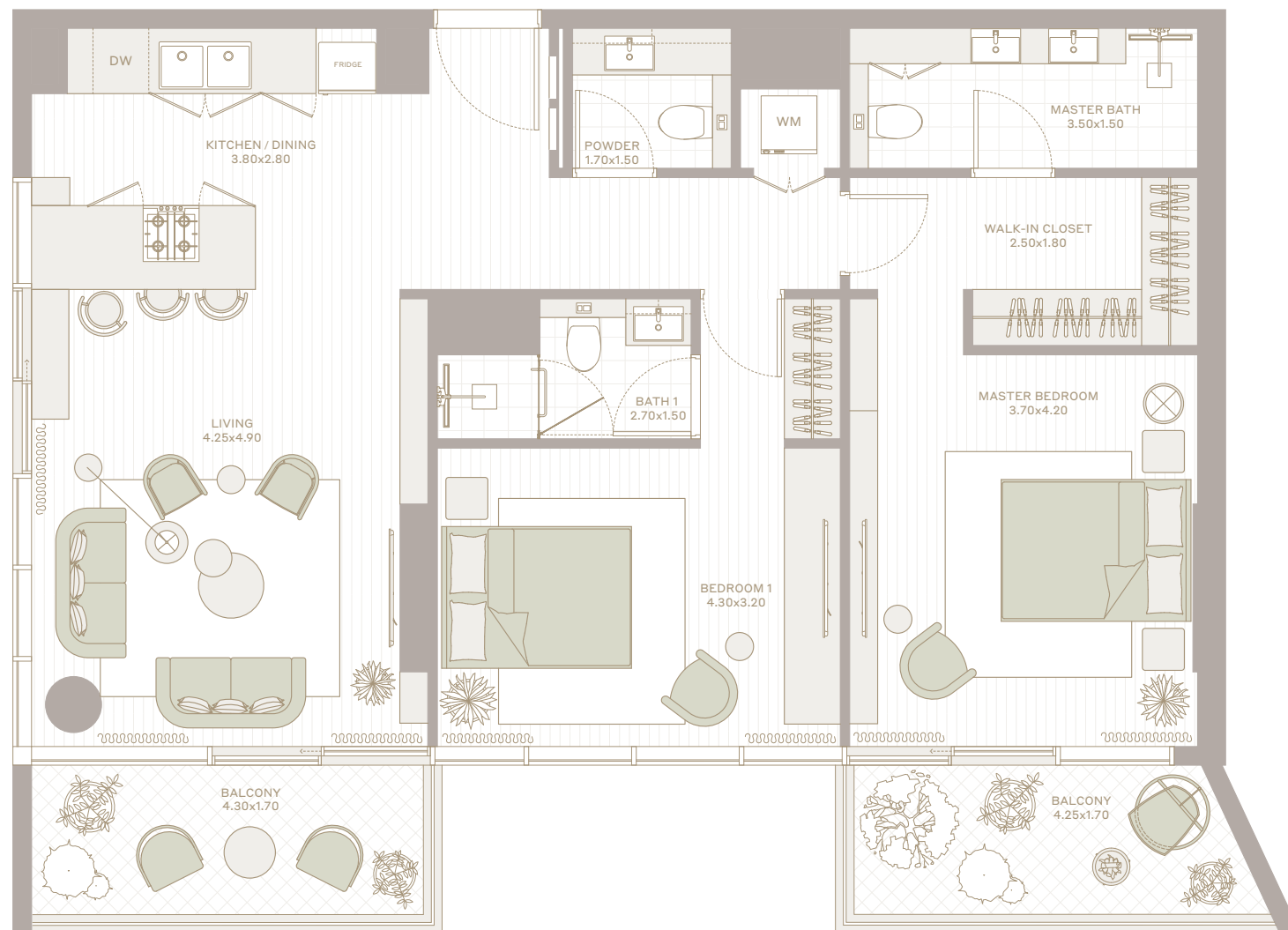
COMMUNITY  
PARK

LEVEL 2-10

COMMUNITY  
PARK

CENTRAL PARK

LEVEL 11



All the dimensions are in square feet. The Unit shown is typical, and actual Unit may vary in dimensions, areas, layout, material specification, orientation, and location. Some of the Units may have a mirrored layout of the above plan. Unit Windows, Façade, Balcony door location, Fixtures, Kitchen Cabinets, Sanitary ware, and Wardrobes, including each of their location as shown in the plan is indicative and subject to revision by the Seller. All fixtures, fittings, goods, accessories, and furniture reflected/displayed in this plan(s) are strictly illustrative and representational (not actual) in nature and are only for the purpose of illustrating /reflecting one of the possible layouts which the Purchaser could arrange after the Unit is handed over and do not form part of the Unit. No furniture, goods, accessories are included in the sale, unless such items are specifically included in Schedule A of the SPA.





TYPE

# 1C

## 2 BHK

INTERIOR	TOTAL
1,060 SQ.FT.	1,228 SQ.FT.

EXTERIOR	FLOORS
168 SQ.FT.	2-11

LAKE VIEW

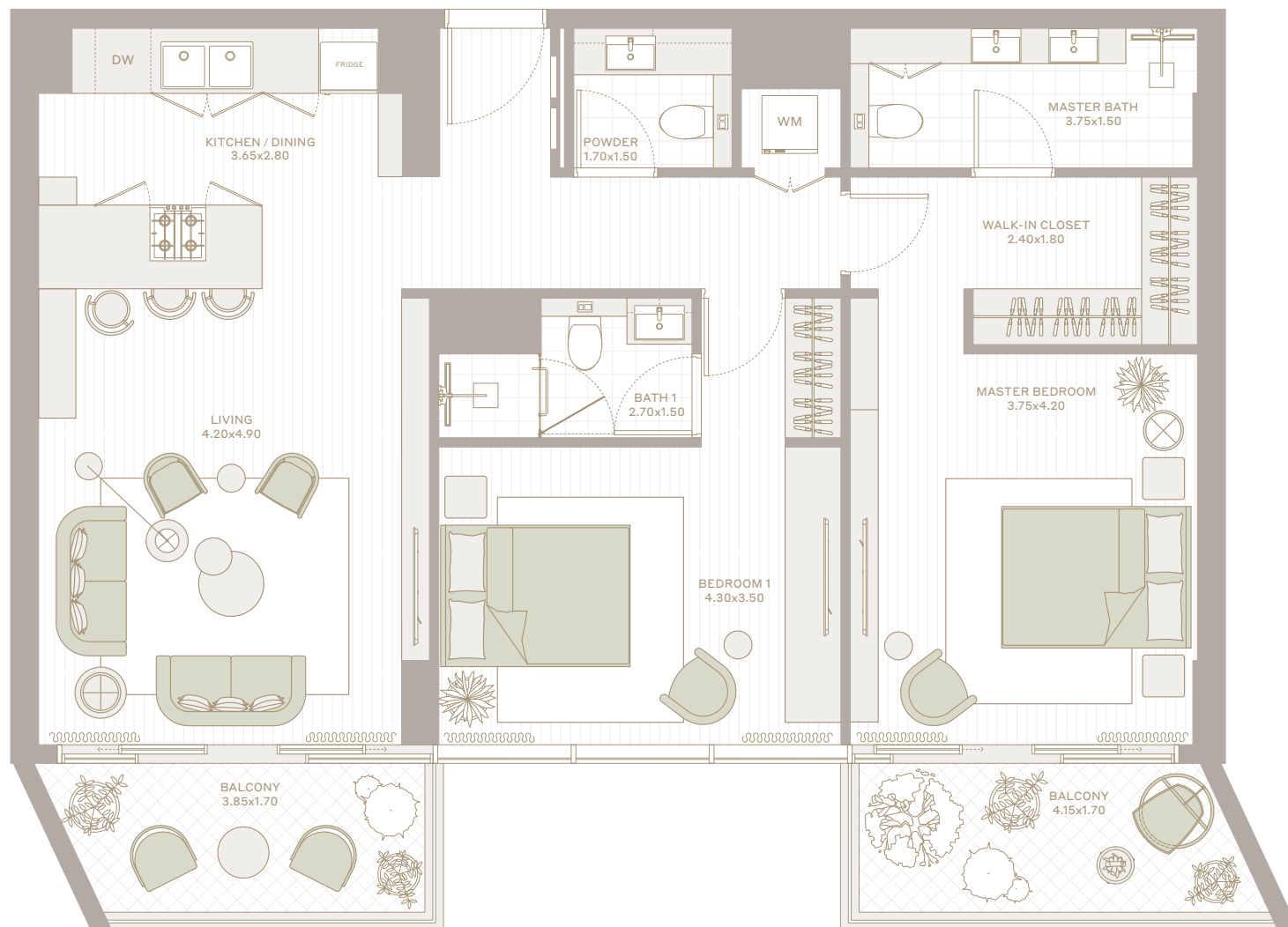
COMMUNITY  
PARK

LEVEL 2-10

CENTRAL PARK

COMMUNITY  
PARK

LEVEL 11



All the dimensions are in square feet. The Unit shown is typical, and actual Unit may vary in dimensions, areas, layout, material specification, orientation, and location. Some of the Units may have a mirrored layout of the above plan. Unit Windows, Façade, Balcony door location, Fixtures, Kitchen Cabinets, Sanitary ware, and Wardrobes, including each of their location as shown in the plan is indicative and subject to revision by the Seller. All fixtures, fittings, goods, accessories, and furniture reflected/displayed in this plan(s) are strictly illustrative and representational (not actual) in nature and are only for the purpose of illustrating /reflecting one of the possible layouts which the Purchaser could arrange after the Unit is handed over and do not form part of the Unit. No furniture, goods, accessories are included in the sale, unless such items are specifically included in Schedule A of the SPA.



TYPE

# 2A

## 2 BHK

INTERIOR  
1,050 SQ.FT.

TOTAL  
1,221 SQ.FT.

EXTERIOR  
171 SQ.FT.

FLOORS  
2-11

LAKE VIEW

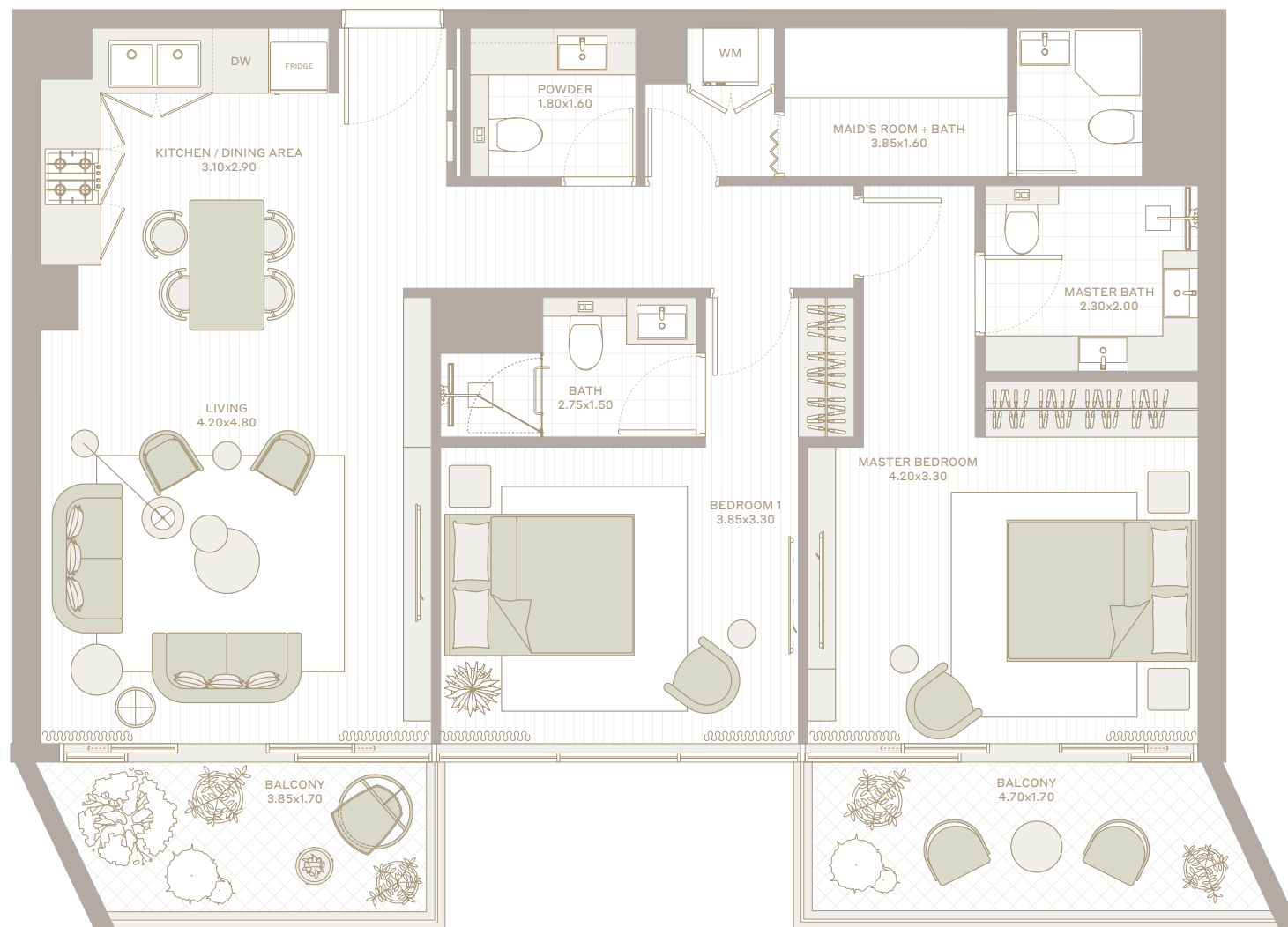
COMMUNITY  
PARK

LEVEL 2-10

CENTRAL PARK

COMMUNITY  
PARK

LEVEL 11



All the dimensions are in square feet. The Unit shown is typical, and actual Unit may vary in dimensions, areas, layout, material specification, orientation, and location. Some of the Units may have a mirrored layout of the above plan. Unit Windows, Façade, Balcony door location, Fixtures, Kitchen Cabinets, Sanitary ware, and Wardrobes, including each of their location as shown in the plan is indicative and subject to revision by the Seller. All fixtures, fittings, goods, accessories, and furniture reflected/displayed in this plan(s) are strictly illustrative and representational (not actual) in nature and are only for the purpose of illustrating /reflecting one of the possible layouts which the Purchaser could arrange after the Unit is handed over and do not form part of the Unit. No furniture, goods, accessories are included in the sale, unless such items are specifically included in Schedule A of the SPA.



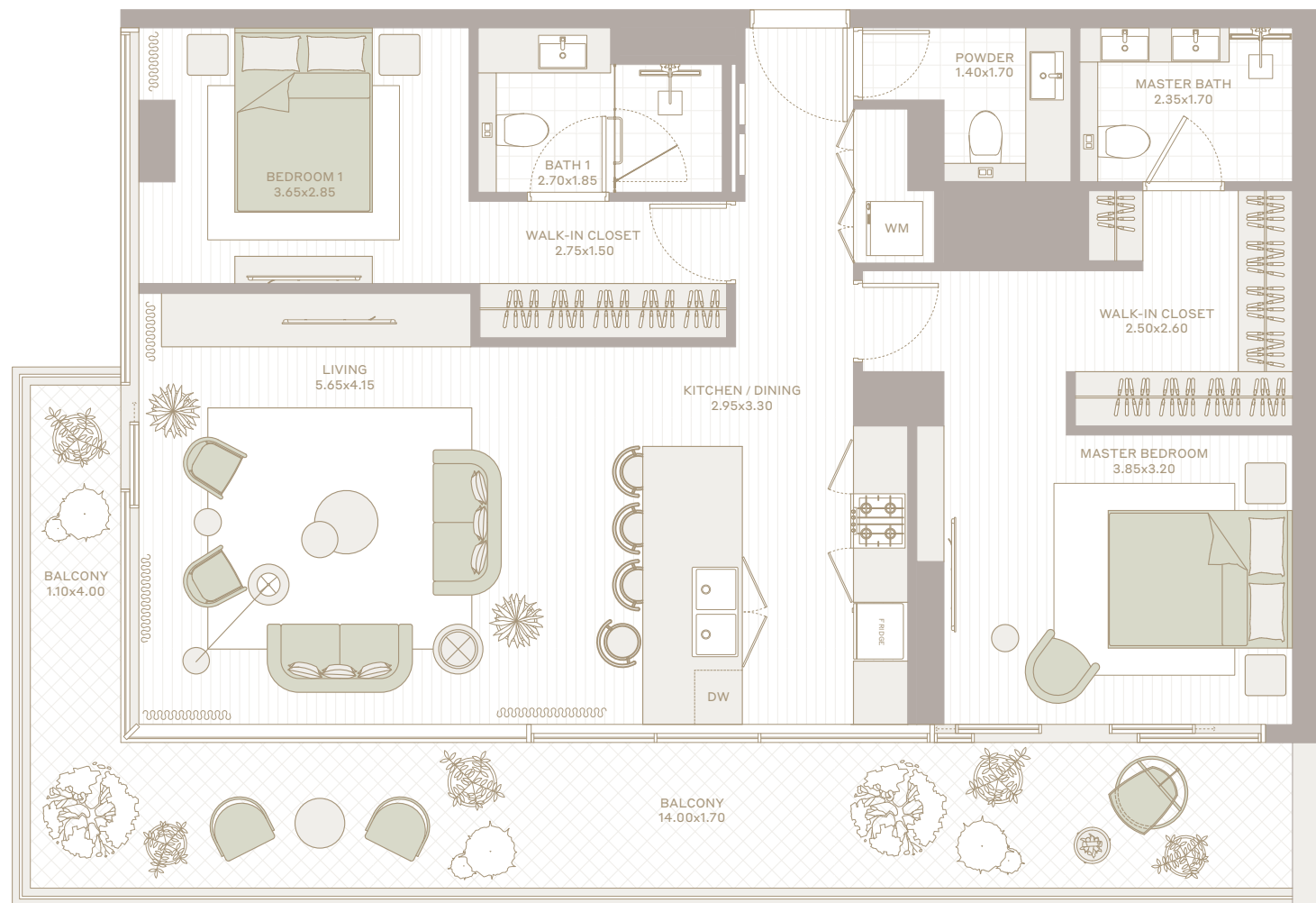
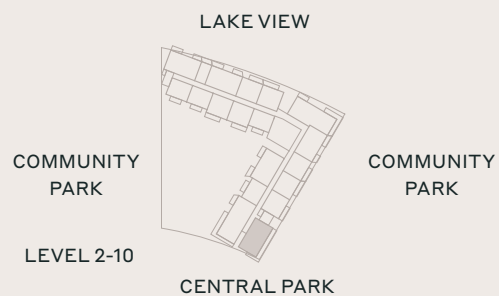
TYPE

05

2 BHK

INTERIOR	TOTAL
1,101 SQ.FT.	1,425 SQ.FT.

EXTERIOR	FLOORS
324 SQ.FT.	2-10



All the dimensions are in square feet. The Unit shown is typical, and actual Unit may vary in dimensions, areas, layout, material specification, orientation, and location. Some of the Units may have a mirrored layout of the above plan. Unit Windows, Façade, Balcony door location, Fixtures, Kitchen Cabinets, Sanitary ware, and Wardrobes, including each of their location as shown in the plan is indicative and subject to revision by the Seller. All fixtures, fittings, goods, accessories, and furniture reflected/displayed in this plan(s) are strictly illustrative and representational (not actual) in nature and are only for the purpose of illustrating /reflecting one of the possible layouts which the Purchaser could arrange after the Unit is handed over and do not form part of the Unit. No furniture, goods, accessories are included in the sale, unless such items are specifically included in Schedule A of the SPA.





TYPE

06

2 BHK

INTERIOR	TOTAL
994 SQ.FT.	1,153 SQ.FT.

EXTERIOR	FLOORS
158 SQ.FT.	1-11

LAKE VIEW

COMMUNITY  
PARK

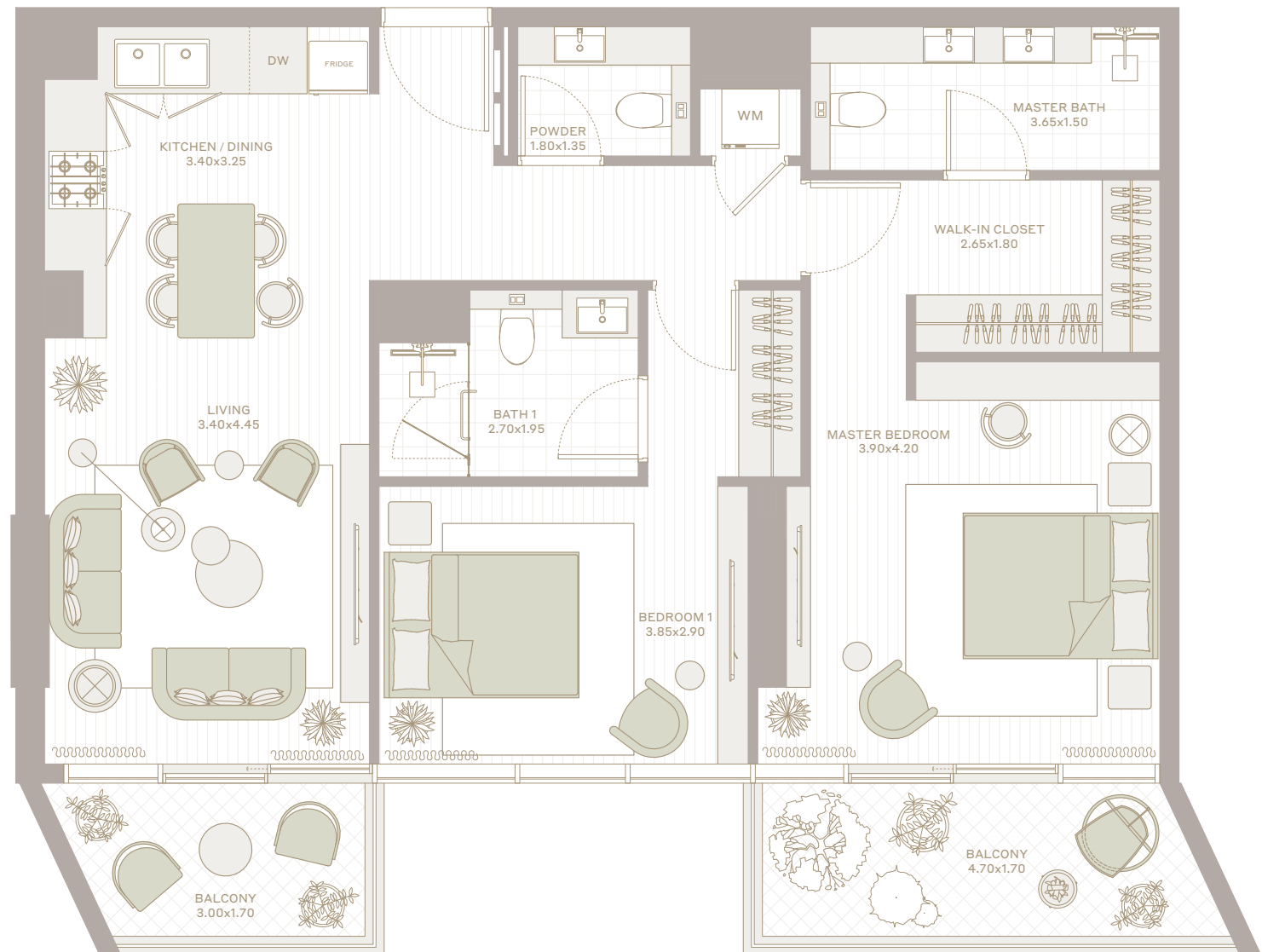
LEVEL 1

CENTRAL PARK

COMMUNITY  
PARK

LEVEL 2-10

LEVEL 11



All the dimensions are in square feet. The Unit shown is typical, and actual Unit may vary in dimensions, areas, layout, material specification, orientation, and location. Some of the Units may have a mirrored layout of the above plan. Unit Windows, Façade, Balcony door location, Fixtures, Kitchen Cabinets, Sanitary ware, and Wardrobes, including each of their location as shown in the plan is indicative and subject to revision by the Seller. All fixtures, fittings, goods, accessories, and furniture reflected/displayed in this plan(s) are strictly illustrative and representational (not actual) in nature and are only for the purpose of illustrating /reflecting one of the possible layouts which the Purchaser could arrange after the Unit is handed over and do not form part of the Unit. No furniture, goods, accessories are included in the sale, unless such items are specifically included in Schedule A of the SPA.



TYPE

# 01

3 BHK



INTERIOR	TOTAL
1,443 SQ.FT.	1,827 SQ.FT.

EXTERIOR	FLOORS
384 SQ.FT.	2-10

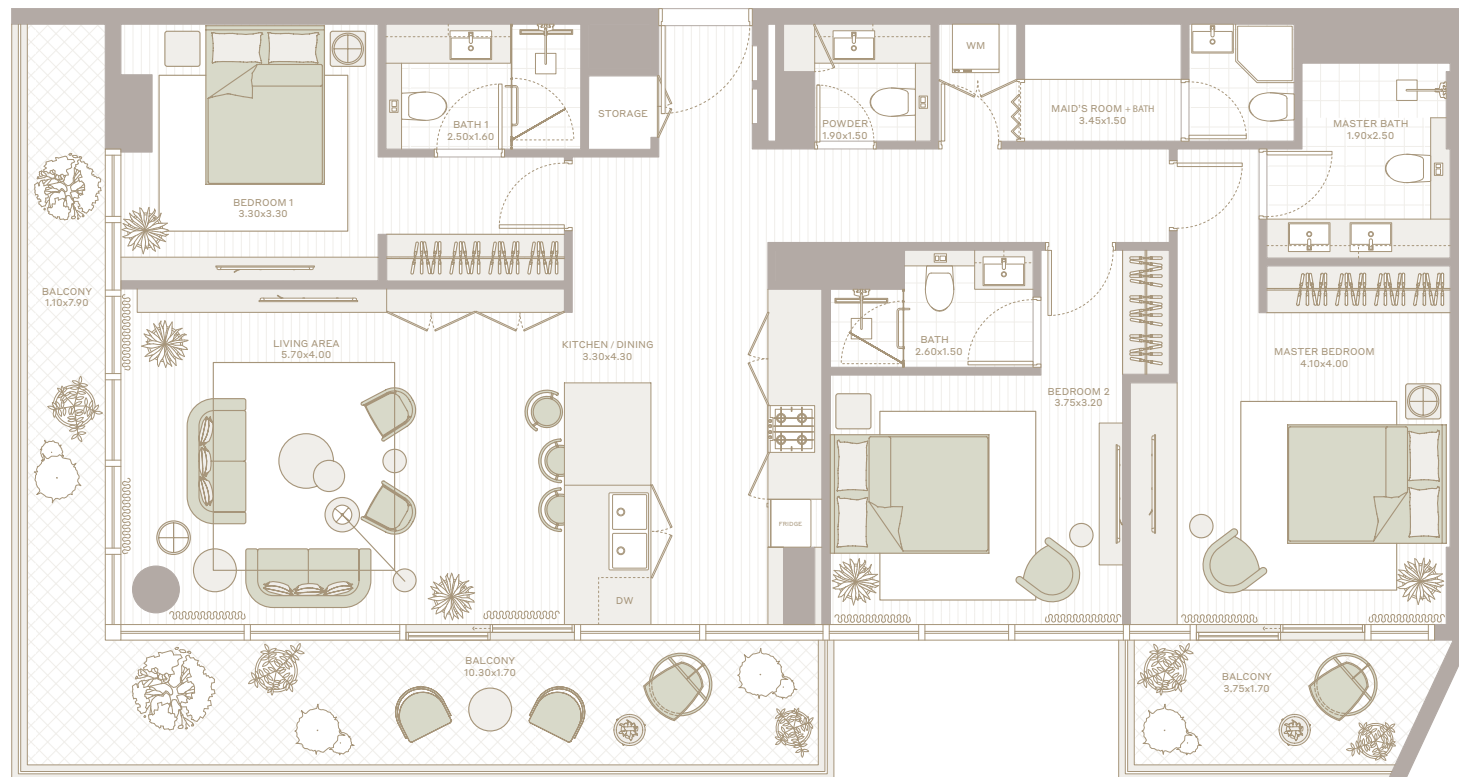
LAKE VIEW

COMMUNITY  
PARK

LEVEL 2-10

CENTRAL PARK

COMMUNITY  
PARK



All the dimensions are in square feet. The Unit shown is typical, and actual Unit may vary in dimensions, areas, layout, material specification, orientation, and location. Some of the Units may have a mirrored layout of the above plan. Unit Windows, Façade, Balcony door location, Fixtures, Kitchen Cabinets, Sanitary ware, and Wardrobes, including each of their location as shown in the plan is indicative and subject to revision by the Seller. All fixtures, fittings, goods, accessories, and furniture reflected/displayed in this plan(s) are strictly illustrative and representational (not actual) in nature and are only for the purpose of illustrating /reflecting one of the possible layouts which the Purchaser could arrange after the Unit is handed over and do not form part of the Unit. No furniture, goods, accessories are included in the sale, unless such items are specifically included in Schedule A of the SPA.



TYPE

# 02

3 BHK



INTERIOR	TOTAL
1,411 SQ.FT.	1,777 SQ.FT.

EXTERIOR	FLOORS
366 SQ.FT.	2-11

LAKE VIEW



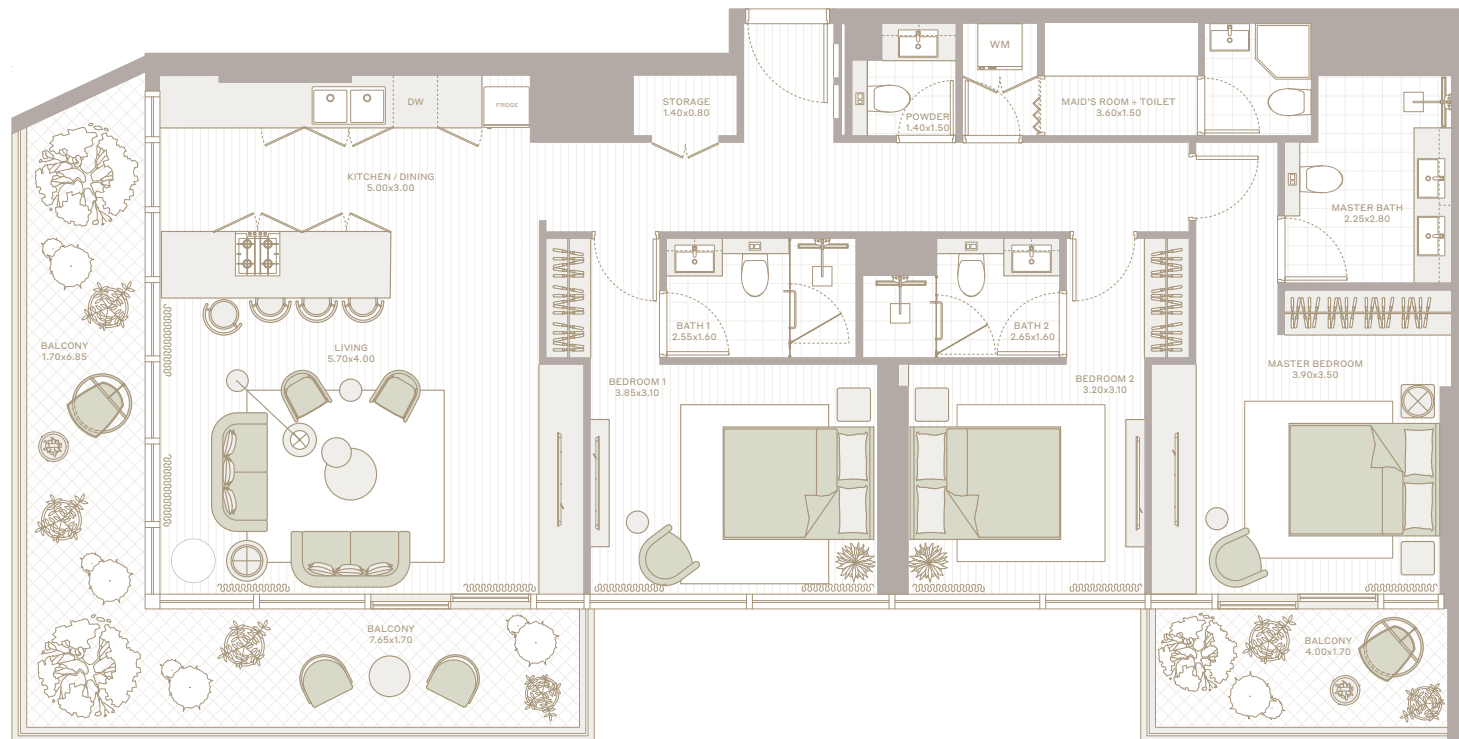
COMMUNITY PARK

LEVEL 2-10

CENTRAL PARK



LEVEL 11



All the dimensions are in square feet. The Unit shown is typical, and actual Unit may vary in dimensions, areas, layout, material specification, orientation, and location. Some of the Units may have a mirrored layout of the above plan. Unit Windows, Façade, Balcony door location, Fixtures, Kitchen Cabinets, Sanitary ware, and Wardrobes, including each of their location as shown in the plan is indicative and subject to revision by the Seller. All fixtures, fittings, goods, accessories, and furniture reflected/displayed in this plan(s) are strictly illustrative and representational (not actual) in nature and are only for the purpose of illustrating /reflecting one of the possible layouts which the Purchaser could arrange after the Unit is handed over and do not form part of the Unit. No furniture, goods, accessories are included in the sale, unless such items are specifically included in Schedule A of the SPA.



# NEEM

AT PARKFIVE

UNIT PLANS





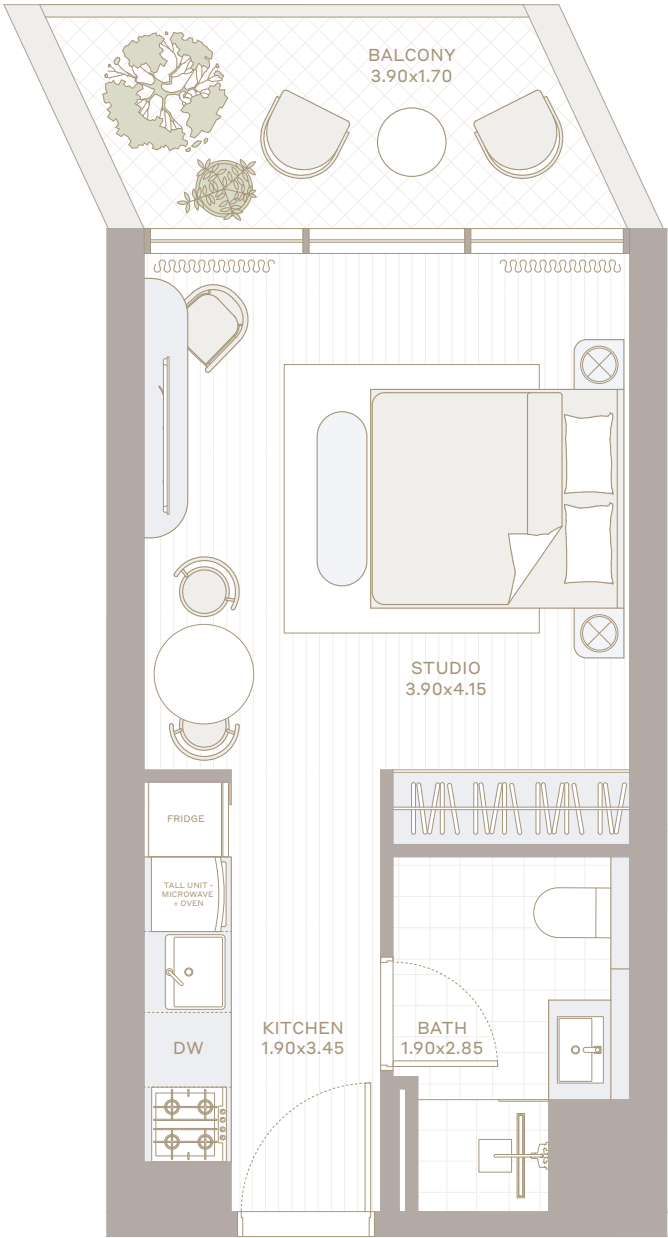
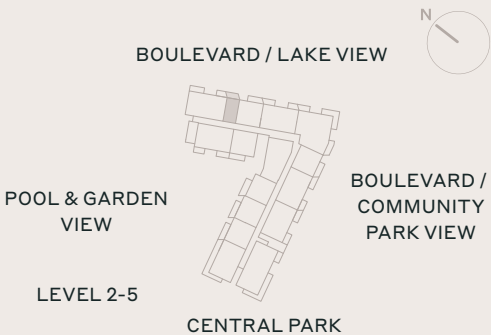


TYPE

01  
STUDIO

INTERIOR	TOTAL
347 SQ.FT.	430 SQ.FT.

EXTERIOR	FLOORS
84 SQ.FT.	2-5



All the dimensions are in square feet. The Unit shown is typical, and actual Unit may vary in dimensions, areas, layout, material specification, orientation, and location. Some of the Units may have a mirrored layout of the above plan. Unit Windows, Façade, Balcony door location, Fixtures, Kitchen Cabinets, Sanitary ware, and Wardrobes, including each of their location as shown in the plan is indicative and subject to revision by the Seller. All fixtures, fittings, goods, accessories, and furniture reflected/displayed in this plan(s) are strictly illustrative and representational (not actual) in nature and are only for the purpose of illustrating /reflecting one of the possible layouts which the Purchaser could arrange after the Unit is handed over and do not form part of the Unit. No furniture, goods, accessories are included in the sale, unless such items are specifically included in Schedule A of the SPA.



TYPE

# 01

1 BHK

INTERIOR	TOTAL
652 SQ.FT.	760 SQ.FT.

EXTERIOR	FLOORS
108 SQ.FT.	2-10

BOULEVARD / LAKE VIEW



POOL & GARDEN  
VIEW

LEVEL 2-5

BOULEVARD /  
COMMUNITY  
PARK VIEW

CENTRAL PARK

LEVEL 6-10



All the dimensions are in square feet. The Unit shown is typical, and actual Unit may vary in dimensions, areas, layout, material specification, orientation, and location. Some of the Units may have a mirrored layout of the above plan. Unit Windows, Façade, Balcony door location, Fixtures, Kitchen Cabinets, Sanitary ware, and Wardrobes, including each of their location as shown in the plan is indicative and subject to revision by the Seller. All fixtures, fittings, goods, accessories, and furniture reflected/displayed in this plan(s) are strictly illustrative and representational (not actual) in nature and are only for the purpose of illustrating /reflecting one of the possible layouts which the Purchaser could arrange after the Unit is handed over and do not form part of the Unit. No furniture, goods, accessories are included in the sale, unless such items are specifically included in Schedule A of the SPA.



TYPE

# 02

1 BHK

INTERIOR  
666 SQ.FT.

TOTAL  
777 SQ.FT.

EXTERIOR  
112 SQ.FT.

FLOORS  
1-11

BOULEVARD / LAKE VIEW



POOL & GARDEN  
VIEW

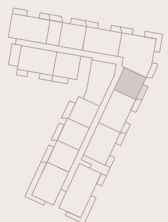
BOULEVARD /  
COMMUNITY  
PARK VIEW

LEVEL 1

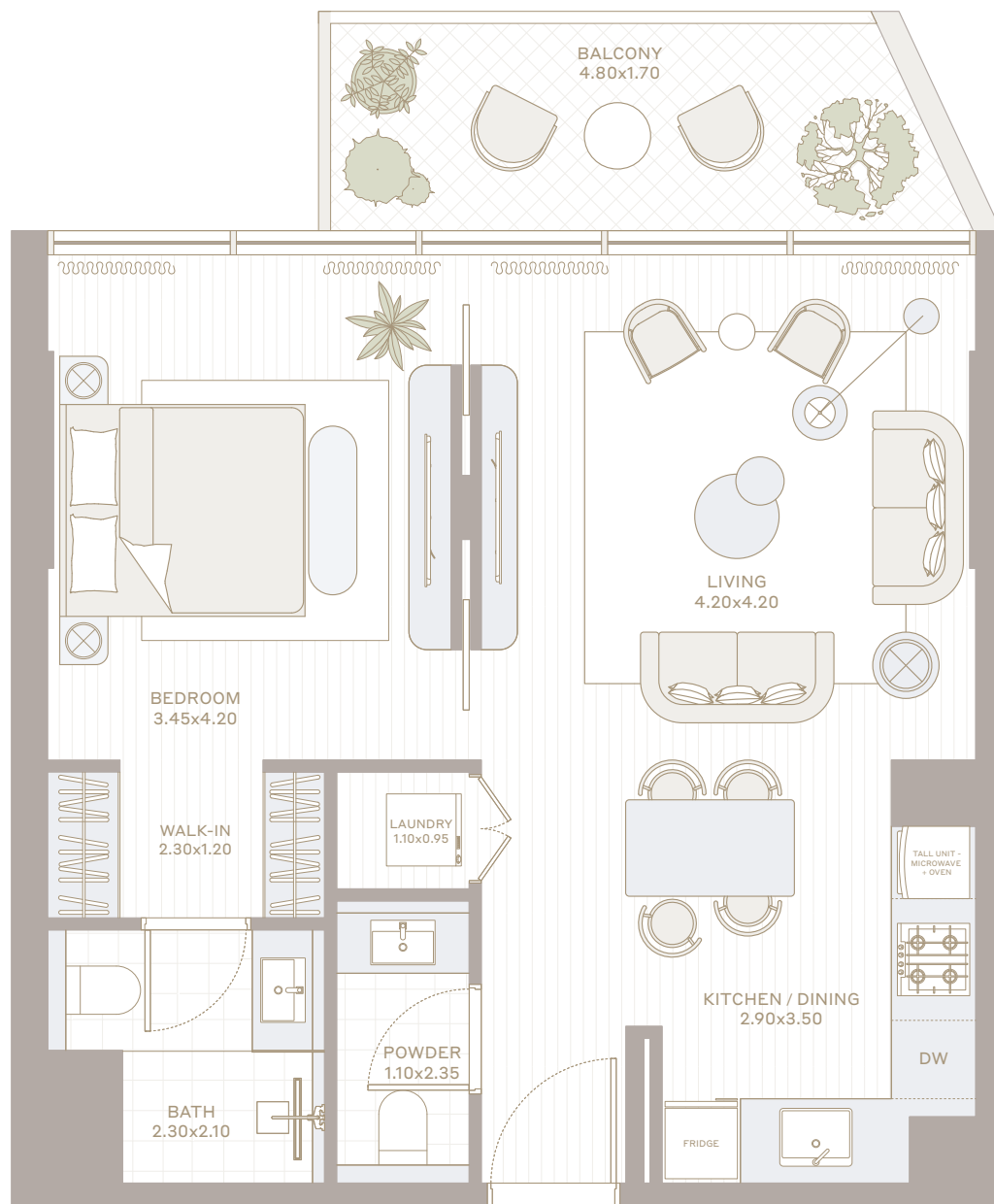
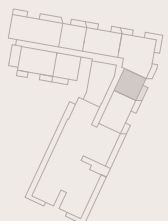


CENTRAL PARK

LEVEL 2-10



LEVEL 11



All the dimensions are in square feet. The Unit shown is typical, and actual Unit may vary in dimensions, areas, layout, material specification, orientation, and location. Some of the Units may have a mirrored layout of the above plan. Unit Windows, Façade, Balcony door location, Fixtures, Kitchen Cabinets, Sanitary ware, and Wardrobes, including each of their location as shown in the plan is indicative and subject to revision by the Seller. All fixtures, fittings, goods, accessories, and furniture reflected/displayed in this plan(s) are strictly illustrative and representational (not actual) in nature and are only for the purpose of illustrating /reflecting one of the possible layouts which the Purchaser could arrange after the Unit is handed over and do not form part of the Unit. No furniture, goods, accessories are included in the sale, unless such items are specifically included in Schedule A of the SPA.



TYPE

03

1 BHK

INTERIOR  
663 SQ.FT.

TOTAL  
768 SQ.FT.

EXTERIOR  
105 SQ.FT.

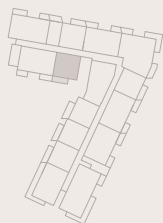
FLOORS  
2-11

BOULEVARD / LAKE VIEW



POOL & GARDEN  
VIEW

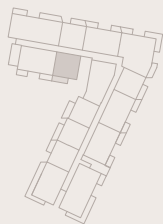
LEVEL 2-5



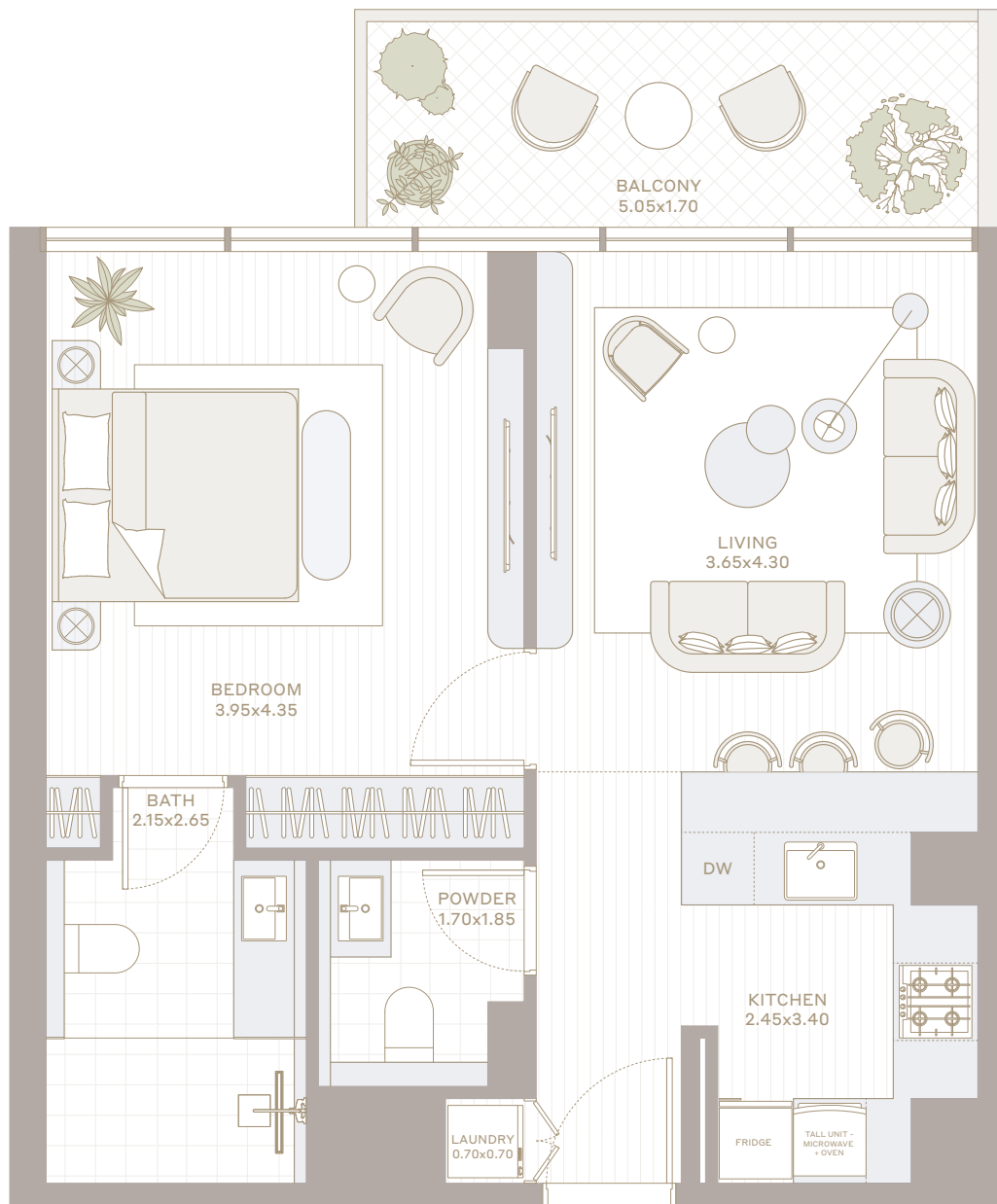
BOULEVARD /  
COMMUNITY  
PARK VIEW

CENTRAL PARK

LEVEL 6-10



LEVEL 11



All the dimensions are in square feet. The Unit shown is typical, and actual Unit may vary in dimensions, areas, layout, material specification, orientation, and location. Some of the Units may have a mirrored layout of the above plan. Unit Windows, Façade, Balcony door location, Fixtures, Kitchen Cabinets, Sanitary ware, and Wardrobes, including each of their location as shown in the plan is indicative and subject to revision by the Seller. All fixtures, fittings, goods, accessories, and furniture reflected/displayed in this plan(s) are strictly illustrative and representational (not actual) in nature and are only for the purpose of illustrating /reflecting one of the possible layouts which the Purchaser could arrange after the Unit is handed over and do not form part of the Unit. No furniture, goods, accessories are included in the sale, unless such items are specifically included in Schedule A of the SPA.





TYPE

# 04

1 BHK

INTERIOR	TOTAL
657 SQ.FT.	758 SQ.FT.

EXTERIOR	FLOORS
101 SQ.FT.	2-11

BOULEVARD / LAKE VIEW



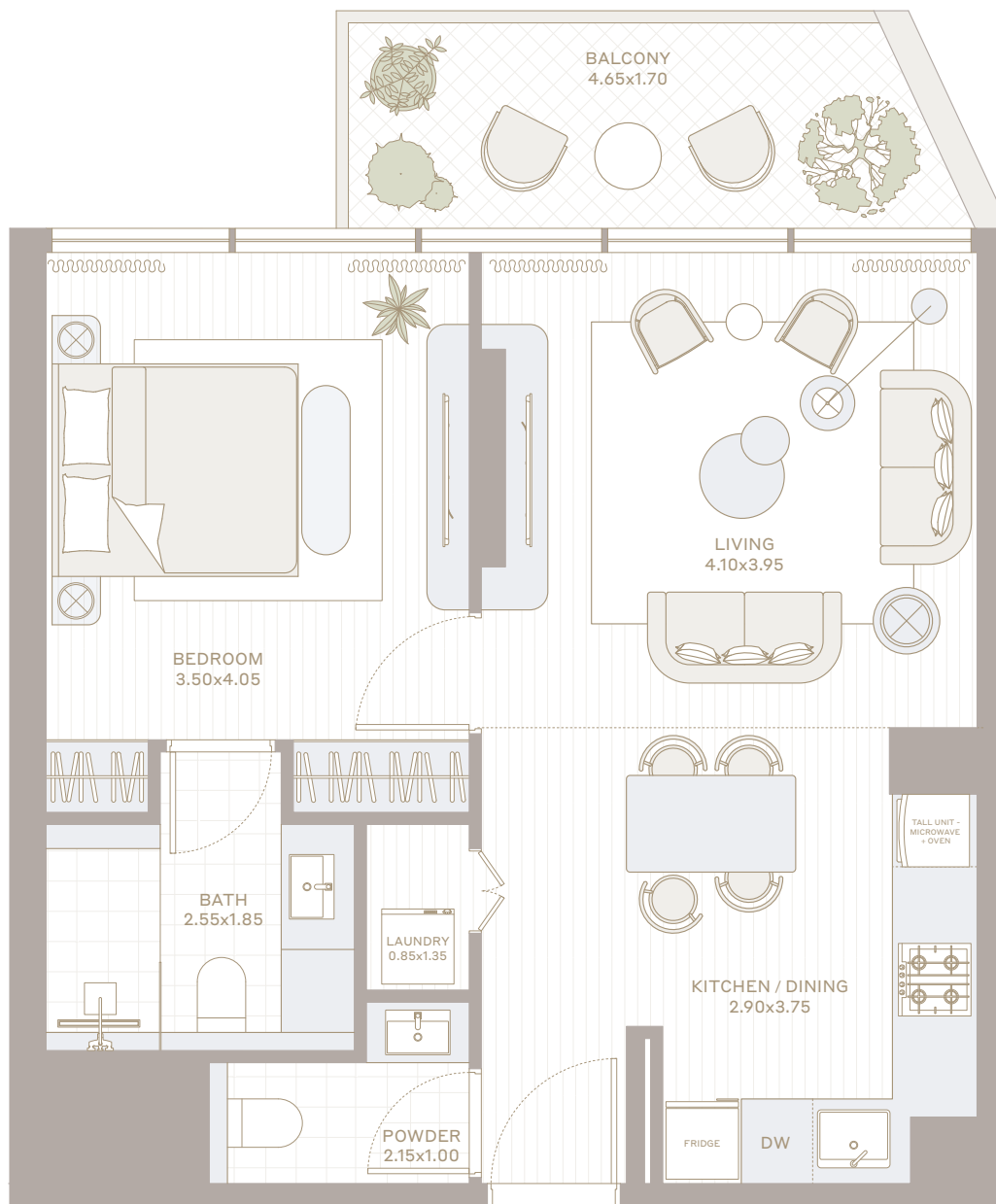
POOL & GARDEN  
VIEW

BOULEVARD /  
COMMUNITY  
PARK VIEW

LEVEL 2-10

CENTRAL PARK

LEVEL 11



All the dimensions are in square feet. The Unit shown is typical, and actual Unit may vary in dimensions, areas, layout, material specification, orientation, and location. Some of the Units may have a mirrored layout of the above plan. Unit Windows, Façade, Balcony door location, Fixtures, Kitchen Cabinets, Sanitary ware, and Wardrobes, including each of their location as shown in the plan is indicative and subject to revision by the Seller. All fixtures, fittings, goods, accessories, and furniture reflected/displayed in this plan(s) are strictly illustrative and representational (not actual) in nature and are only for the purpose of illustrating /reflecting one of the possible layouts which the Purchaser could arrange after the Unit is handed over and do not form part of the Unit. No furniture, goods, accessories are included in the sale, unless such items are specifically included in Schedule A of the SPA.



TYPE

# 4T

1 BHK

INTERIOR	TOTAL
657 SQ.FT.	904 SQ.FT.

EXTERIOR	FLOORS
247 SQ.FT.	1

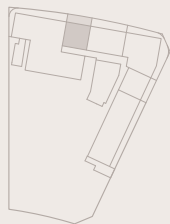
BOULEVARD / LAKE VIEW



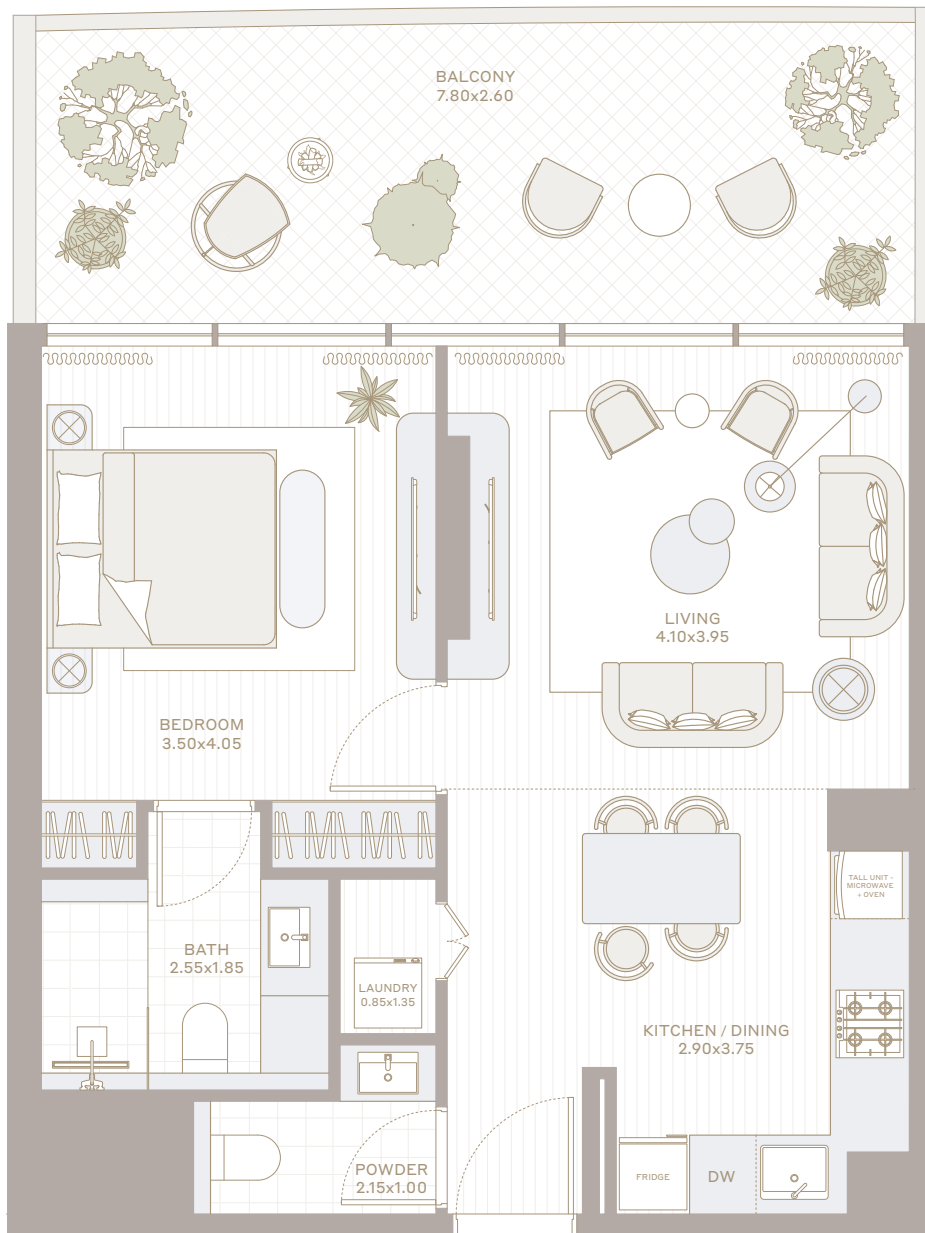
POOL & GARDEN  
VIEW

BOULEVARD /  
COMMUNITY  
PARK VIEW

LEVEL 1



CENTRAL PARK



All the dimensions are in square feet. The Unit shown is typical, and actual Unit may vary in dimensions, areas, layout, material specification, orientation, and location. Some of the Units may have a mirrored layout of the above plan. Unit Windows, Façade, Balcony door location, Fixtures, Kitchen Cabinets, Sanitary ware, and Wardrobes, including each of their location as shown in the plan is indicative and subject to revision by the Seller. All fixtures, fittings, goods, accessories, and furniture reflected/displayed in this plan(s) are strictly illustrative and representational (not actual) in nature and are only for the purpose of illustrating /reflecting one of the possible layouts which the Purchaser could arrange after the Unit is handed over and do not form part of the Unit. No furniture, goods, accessories are included in the sale, unless such items are specifically included in Schedule A of the SPA.



TYPE

# 05

1 BHK

INTERIOR	TOTAL
628 SQ.FT.	764 SQ.FT.

EXTERIOR	FLOORS
136 SQ.FT.	2-10

BOULEVARD / LAKE VIEW



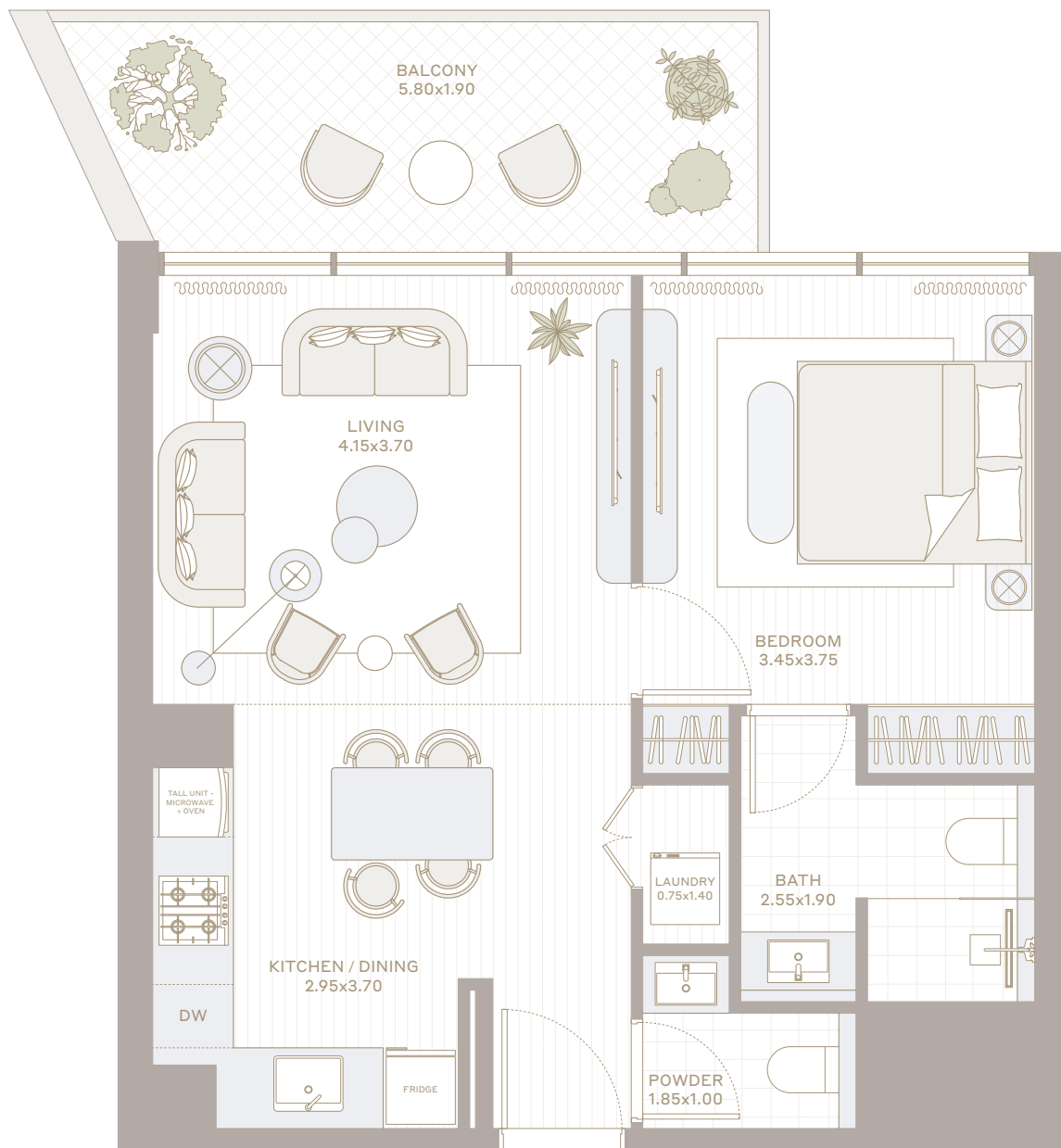
POOL & GARDEN  
VIEW

BOULEVARD /  
COMMUNITY  
PARK VIEW

LEVEL 2-5

CENTRAL PARK

LEVEL 6-10



All the dimensions are in square feet. The Unit shown is typical, and actual Unit may vary in dimensions, areas, layout, material specification, orientation, and location. Some of the Units may have a mirrored layout of the above plan. Unit Windows, Façade, Balcony door location, Fixtures, Kitchen Cabinets, Sanitary ware, and Wardrobes, including each of their location as shown in the plan is indicative and subject to revision by the Seller. All fixtures, fittings, goods, accessories, and furniture reflected/displayed in this plan(s) are strictly illustrative and representational (not actual) in nature and are only for the purpose of illustrating /reflecting one of the possible layouts which the Purchaser could arrange after the Unit is handed over and do not form part of the Unit. No furniture, goods, accessories are included in the sale, unless such items are specifically included in Schedule A of the SPA.



TYPE

01

2 BHK

INTERIOR  
1,048 SQ.FT.

TOTAL  
1,210 SQ.FT.

EXTERIOR  
161 SQ.FT.

FLOORS  
2-5

BOULEVARD / LAKE VIEW

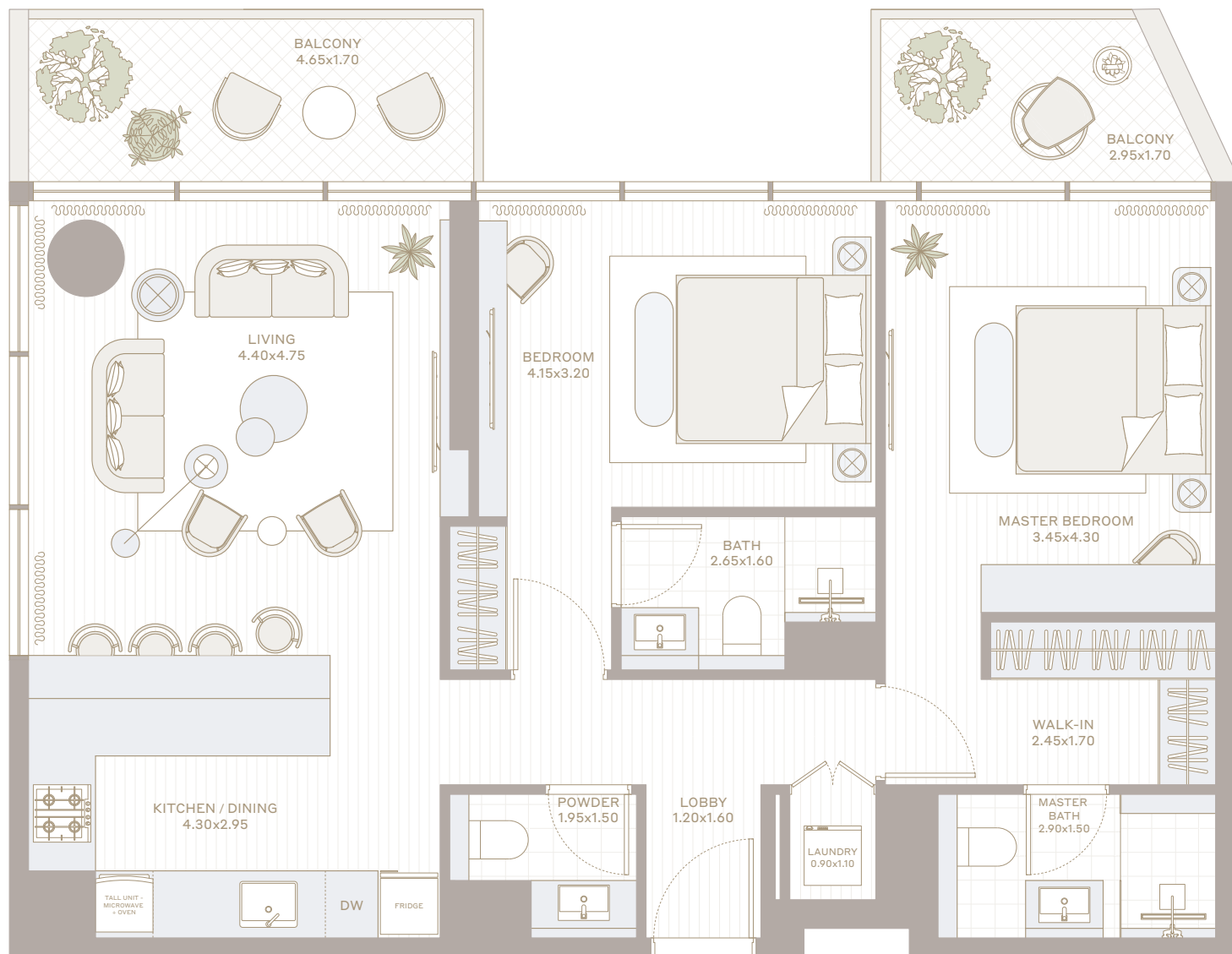


POOL & GARDEN  
VIEW

BOULEVARD /  
COMMUNITY  
PARK VIEW

LEVEL 2-5

CENTRAL PARK



All the dimensions are in square feet. The Unit shown is typical, and actual Unit may vary in dimensions, areas, layout, material specification, orientation, and location. Some of the Units may have a mirrored layout of the above plan. Unit Windows, Façade, Balcony door location, Fixtures, Kitchen Cabinets, Sanitary ware, and Wardrobes, including each of their location as shown in the plan is indicative and subject to revision by the Seller. All fixtures, fittings, goods, accessories, and furniture reflected/displayed in this plan(s) are strictly illustrative and representational (not actual) in nature and are only for the purpose of illustrating /reflecting one of the possible layouts which the Purchaser could arrange after the Unit is handed over and do not form part of the Unit. No furniture, goods, accessories are included in the sale, unless such items are specifically included in Schedule A of the SPA.



TYPE

# 02

2 BHK

INTERIOR  
978 SQ.FT.

TOTAL  
1,125 SQ.FT.

EXTERIOR  
147 SQ.FT.

FLOORS  
2-11

BOULEVARD / LAKE VIEW



POOL & GARDEN  
VIEW

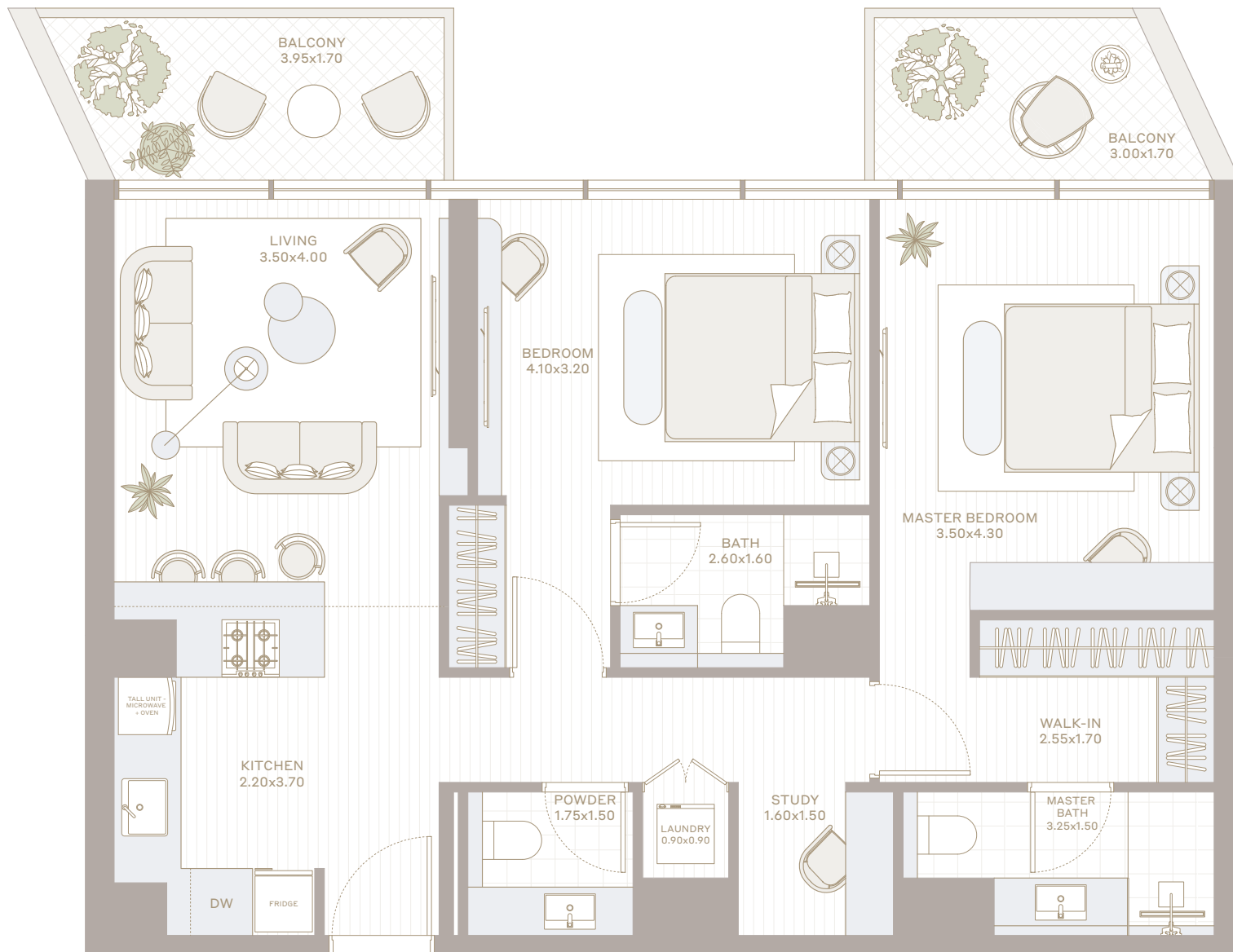
BOULEVARD /  
COMMUNITY  
PARK VIEW

LEVEL 2-5

CENTRAL PARK

LEVEL 6-10

LEVEL 11



All the dimensions are in square feet. The Unit shown is typical, and actual Unit may vary in dimensions, areas, layout, material specification, orientation, and location. Some of the Units may have a mirrored layout of the above plan. Unit Windows, Façade, Balcony door location, Fixtures, Kitchen Cabinets, Sanitary ware, and Wardrobes, including each of their location as shown in the plan is indicative and subject to revision by the Seller. All fixtures, fittings, goods, accessories, and furniture reflected/displayed in this plan(s) are strictly illustrative and representational (not actual) in nature and are only for the purpose of illustrating /reflecting one of the possible layouts which the Purchaser could arrange after the Unit is handed over and do not form part of the Unit. No furniture, goods, accessories are included in the sale, unless such items are specifically included in Schedule A of the SPA.



NEEM

PARKFIVE

TYPE

2T  
2 BHK

INTERIOR	TOTAL
978 SQ.FT.	1,330 SQ.FT.

EXTERIOR	FLOORS
352 SQ.FT.	1

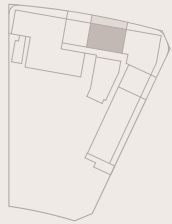
BOULEVARD / LAKE VIEW



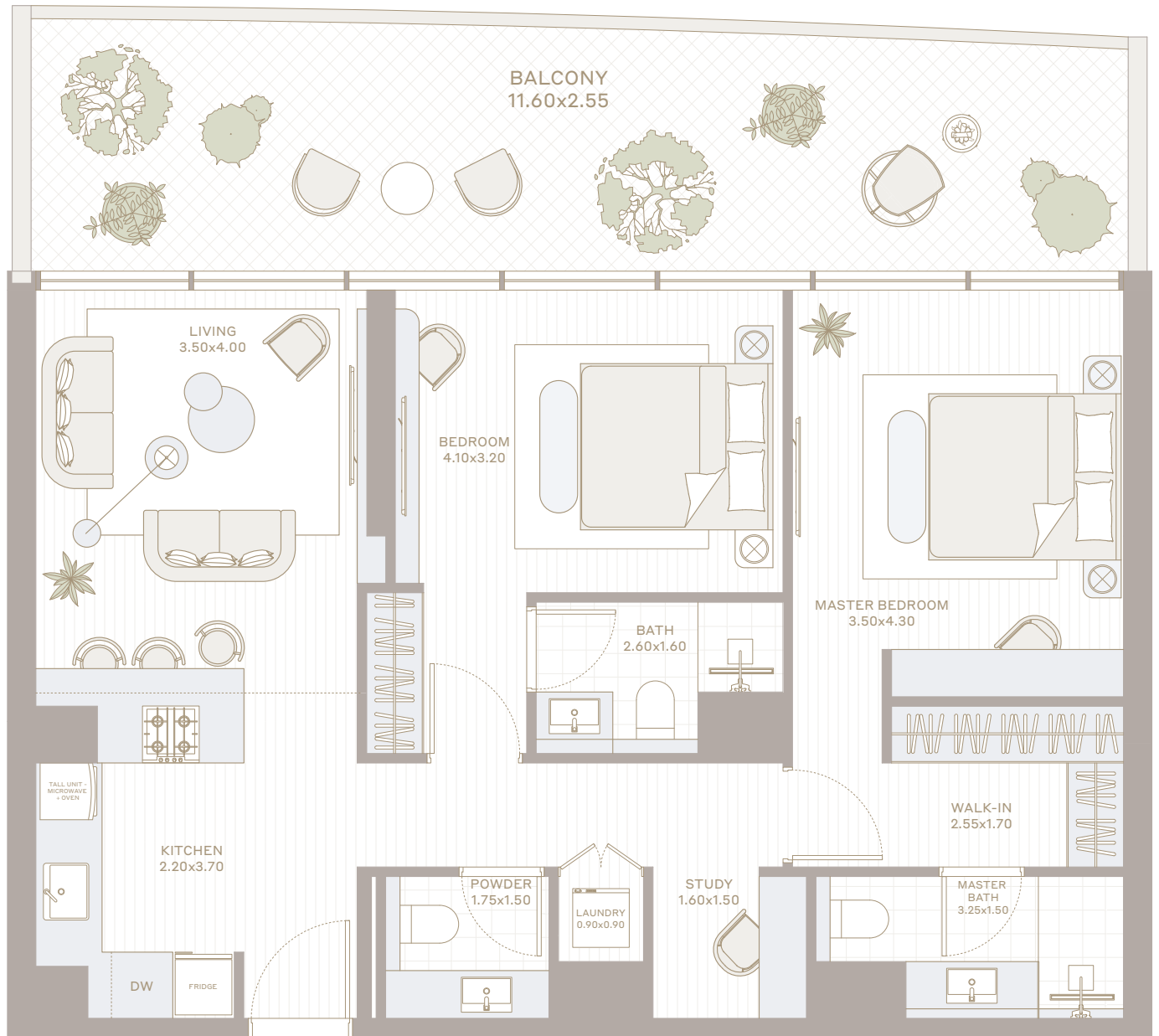
POOL & GARDEN  
VIEW

BOULEVARD /  
COMMUNITY  
PARK VIEW

LEVEL 1



CENTRAL PARK



All the dimensions are in square feet. The Unit shown is typical, and actual Unit may vary in dimensions, areas, layout, material specification, orientation, and location. Some of the Units may have a mirrored layout of the above plan. Unit Windows, Façade, Balcony door location, Fixtures, Kitchen Cabinets, Sanitary ware, and Wardrobes, including each of their location as shown in the plan is indicative and subject to revision by the Seller. All fixtures, fittings, goods, accessories, and furniture reflected/displayed in this plan(s) are strictly illustrative and representational (not actual) in nature and are only for the purpose of illustrating /reflecting one of the possible layouts which the Purchaser could arrange after the Unit is handed over and do not form part of the Unit. No furniture, goods, accessories are included in the sale, unless such items are specifically included in Schedule A of the SPA.



TYPE

# 03

2 BHK

INTERIOR  
992 SQ.FT.

TOTAL  
1,148 SQ.FT.

EXTERIOR  
156 SQ.FT.

FLOORS  
2-11

BOULEVARD / LAKE VIEW



POOL & GARDEN  
VIEW

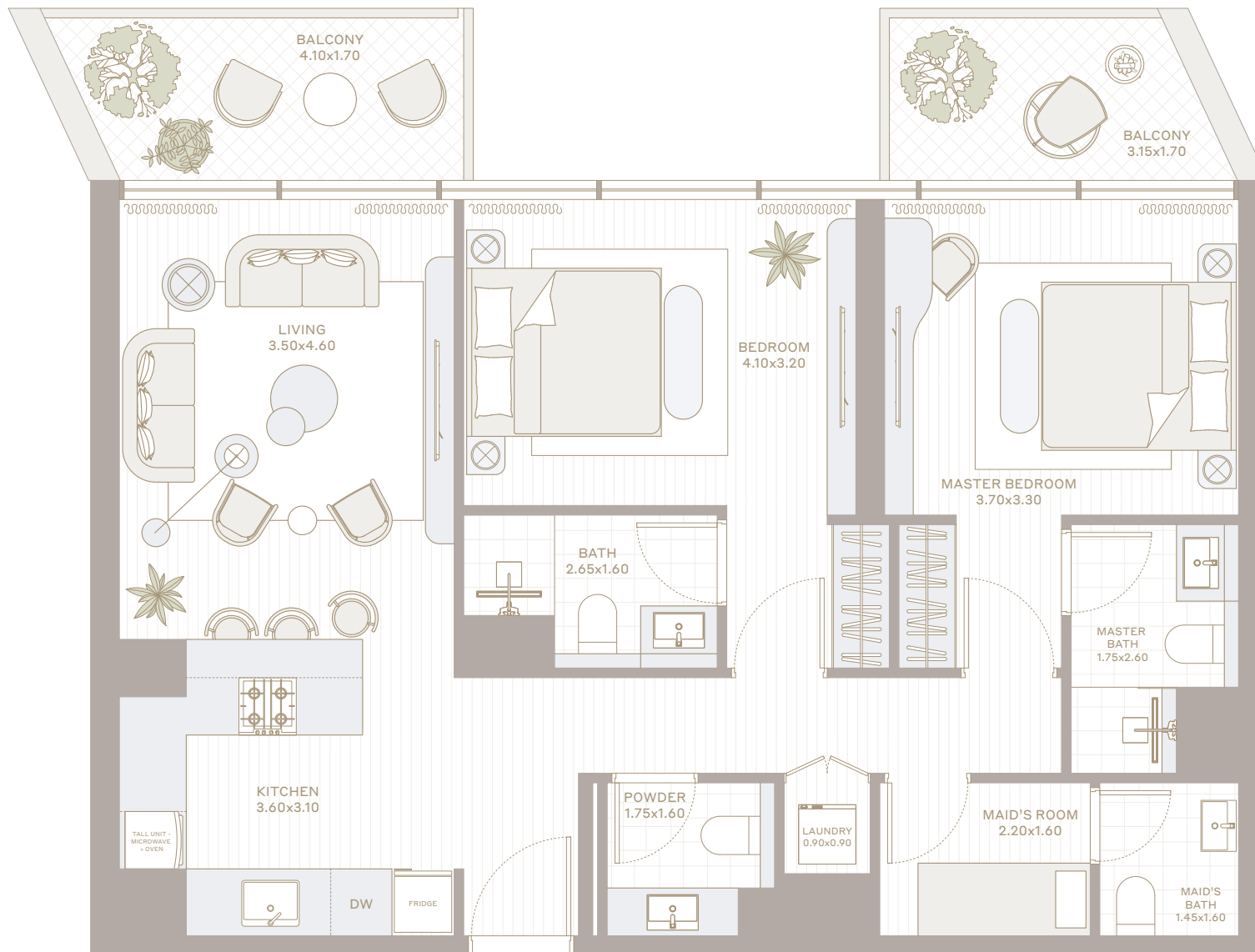
BOULEVARD /  
COMMUNITY  
PARK VIEW

LEVEL 2-5

CENTRAL PARK

LEVEL 6-10

LEVEL 11



All the dimensions are in square feet. The Unit shown is typical, and actual Unit may vary in dimensions, areas, layout, material specification, orientation, and location. Some of the Units may have a mirrored layout of the above plan. Unit Windows, Façade, Balcony door location, Fixtures, Kitchen Cabinets, Sanitary ware, and Wardrobes, including each of their location as shown in the plan is indicative and subject to revision by the Seller. All fixtures, fittings, goods, accessories, and furniture reflected/displayed in this plan(s) are strictly illustrative and representational (not actual) in nature and are only for the purpose of illustrating /reflecting one of the possible layouts which the Purchaser could arrange after the Unit is handed over and do not form part of the Unit. No furniture, goods, accessories are included in the sale, unless such items are specifically included in Schedule A of the SPA.



TYPE

04

2 BHK

INTERIOR  
999 SQ.FT. TOTAL  
1,335 SQ.FT.

EXTERIOR  
336 SQ.FT. FLOORS  
2-10

BOULEVARD / LAKE VIEW



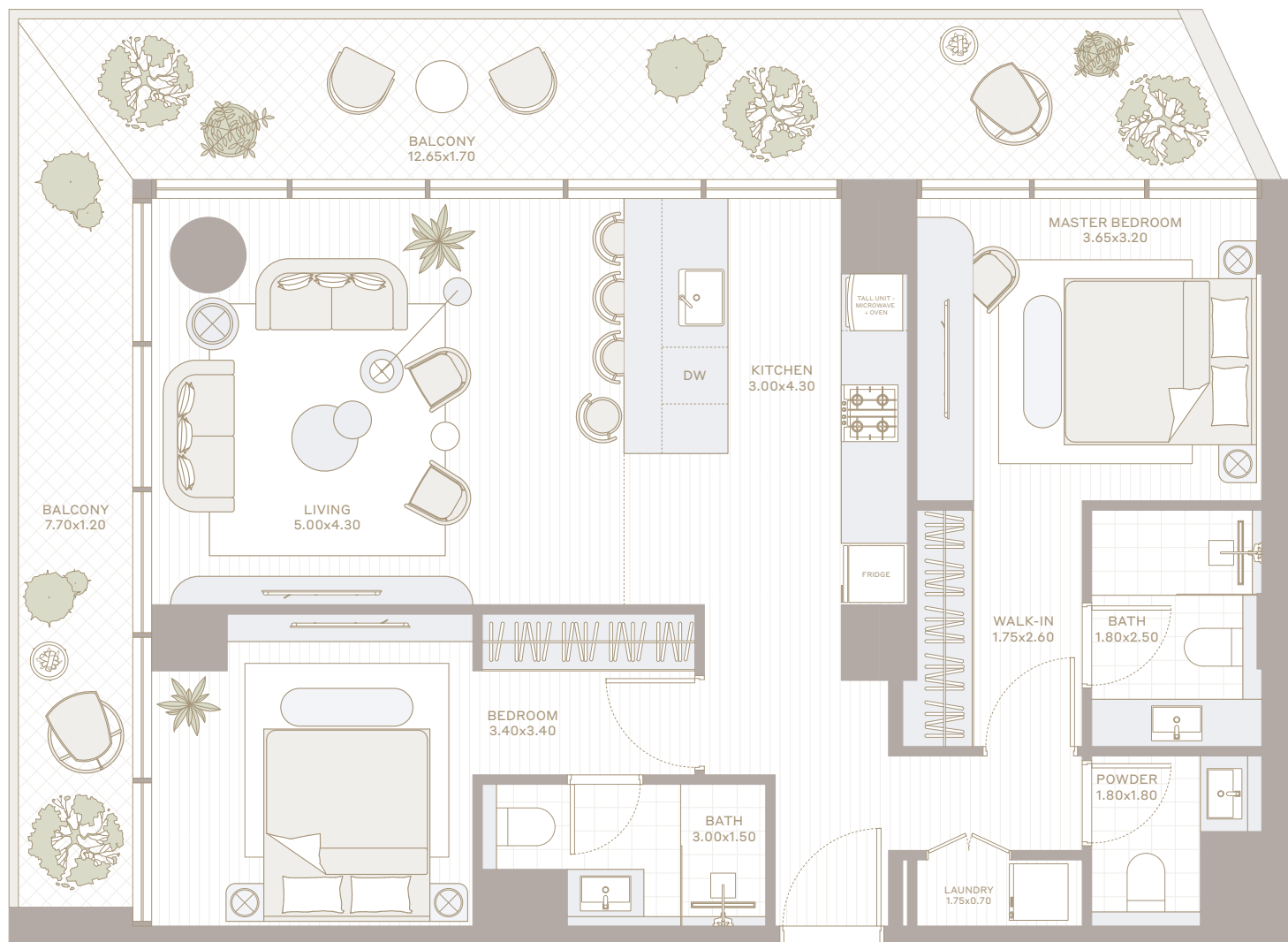
POOL & GARDEN  
VIEW

BOULEVARD /  
COMMUNITY  
PARK VIEW

LEVEL 2-5

CENTRAL PARK

LEVEL 6-10



All the dimensions are in square feet. The Unit shown is typical, and actual Unit may vary in dimensions, areas, layout, material specification, orientation, and location. Some of the Units may have a mirrored layout of the above plan. Unit Windows, Façade, Balcony door location, Fixtures, Kitchen Cabinets, Sanitary ware, and Wardrobes, including each of their location as shown in the plan is indicative and subject to revision by the Seller. All fixtures, fittings, goods, accessories, and furniture reflected/displayed in this plan(s) are strictly illustrative and representational (not actual) in nature and are only for the purpose of illustrating /reflecting one of the possible layouts which the Purchaser could arrange after the Unit is handed over and do not form part of the Unit. No furniture, goods, accessories are included in the sale, unless such items are specifically included in Schedule A of the SPA.





TYPE

# 05

2 BHK

INTERIOR  
999 SQ.FT.

TOTAL  
1,159 SQ.FT.

EXTERIOR  
160 SQ.FT.

FLOORS  
2-11

BOULEVARD / LAKE VIEW



POOL & GARDEN  
VIEW

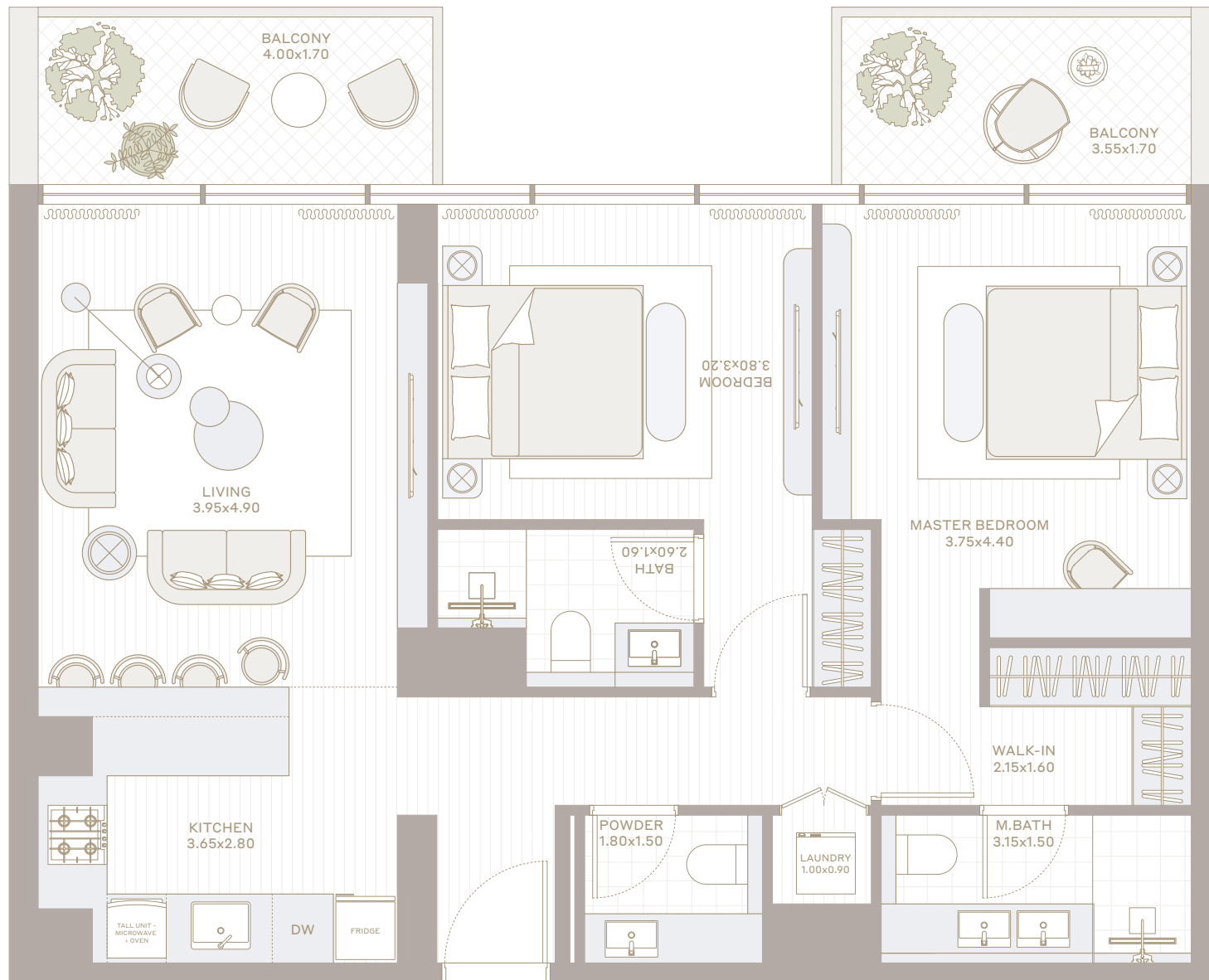
LEVEL 2-5

BOULEVARD /  
COMMUNITY  
PARK VIEW

CENTRAL PARK

LEVEL 6-10

LEVEL 11



All the dimensions are in square feet. The Unit shown is typical, and actual Unit may vary in dimensions, areas, layout, material specification, orientation, and location. Some of the Units may have a mirrored layout of the above plan. Unit Windows, Façade, Balcony door location, Fixtures, Kitchen Cabinets, Sanitary ware, and Wardrobes, including each of their location as shown in the plan is indicative and subject to revision by the Seller. All fixtures, fittings, goods, accessories, and furniture reflected/displayed in this plan(s) are strictly illustrative and representational (not actual) in nature and are only for the purpose of illustrating /reflecting one of the possible layouts which the Purchaser could arrange after the Unit is handed over and do not form part of the Unit. No furniture, goods, accessories are included in the sale, unless such items are specifically included in Schedule A of the SPA.



TYPE

01

3 BHK

INTERIOR  
1,397 SQ.FT.

TOTAL  
1,636 SQ.FT.

EXTERIOR  
239 SQ.FT.

FLOORS  
6-11

BOULEVARD / LAKE VIEW



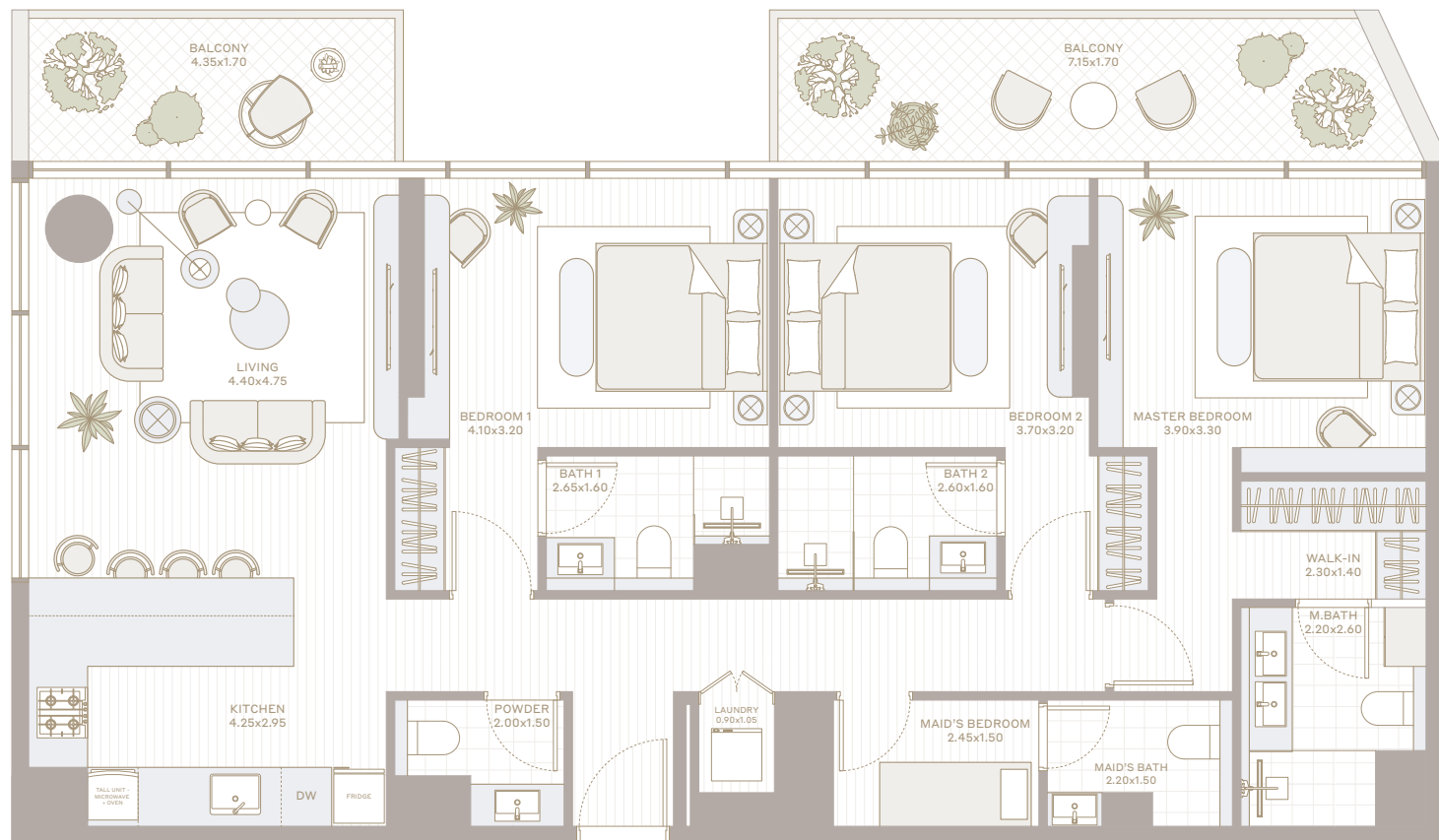
POOL & GARDEN  
VIEW

BOULEVARD /  
COMMUNITY  
PARK VIEW

LEVEL 6-10

CENTRAL PARK

LEVEL 11



All the dimensions are in square feet. The Unit shown is typical, and actual Unit may vary in dimensions, areas, layout, material specification, orientation, and location. Some of the Units may have a mirrored layout of the above plan. Unit Windows, Façade, Balcony door location, Fixtures, Kitchen Cabinets, Sanitary ware, and Wardrobes, including each of their location as shown in the plan is indicative and subject to revision by the Seller. All fixtures, fittings, goods, accessories, and furniture reflected/displayed in this plan(s) are strictly illustrative and representational (not actual) in nature and are only for the purpose of illustrating /reflecting one of the possible layouts which the Purchaser could arrange after the Unit is handed over and do not form part of the Unit. No furniture, goods, accessories are included in the sale, unless such items are specifically included in Schedule A of the SPA.



TYPE

02

3 BHK

INTERIOR  
1,372 SQ.FT.

TOTAL  
1,743 SQ.FT.

EXTERIOR  
371 SQ.FT.

FLOORS  
2-11

BOULEVARD / LAKE VIEW



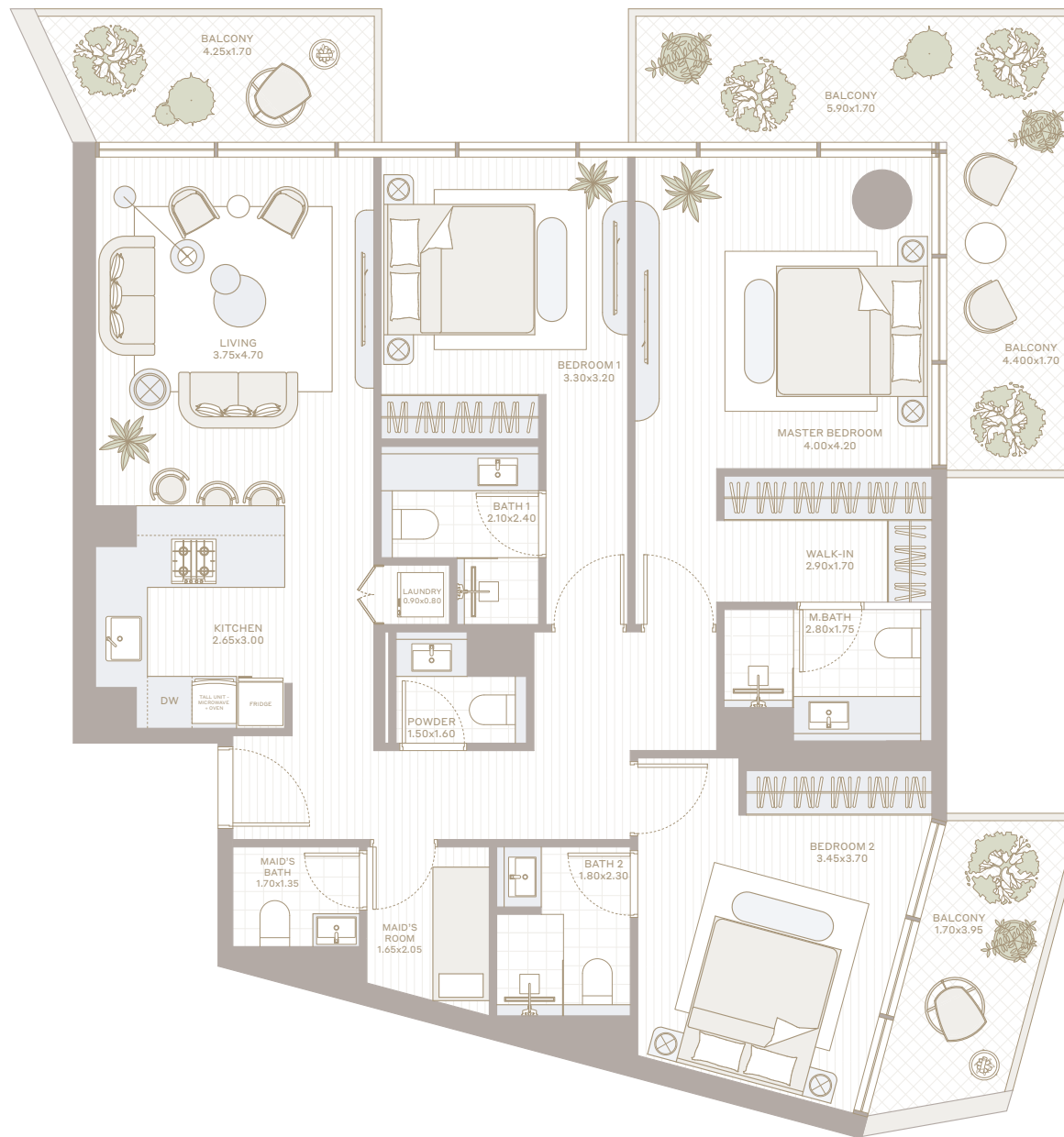
POOL & GARDEN  
VIEW

BOULEVARD /  
COMMUNITY  
PARK VIEW

LEVEL 2-10

CENTRAL PARK

LEVEL 11



All the dimensions are in square feet. The Unit shown is typical, and actual Unit may vary in dimensions, areas, layout, material specification, orientation, and location. Some of the Units may have a mirrored layout of the above plan. Unit Windows, Façade, Balcony door location, Fixtures, Kitchen Cabinets, Sanitary ware, and Wardrobes, including each of their location as shown in the plan is indicative and subject to revision by the Seller. All fixtures, fittings, goods, accessories, and furniture reflected/displayed in this plan(s) are strictly illustrative and representational (not actual) in nature and are only for the purpose of illustrating /reflecting one of the possible layouts which the Purchaser could arrange after the Unit is handed over and do not form part of the Unit. No furniture, goods, accessories are included in the sale, unless such items are specifically included in Schedule A of the SPA.



TYPE

# 2T

3 BHK

INTERIOR  
1,372 SQ.FT.

TOTAL  
2,028 SQ.FT.

EXTERIOR  
656 SQ.FT.

FLOORS  
1

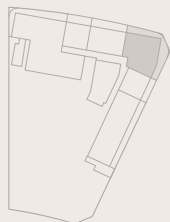
BOULEVARD / LAKE VIEW



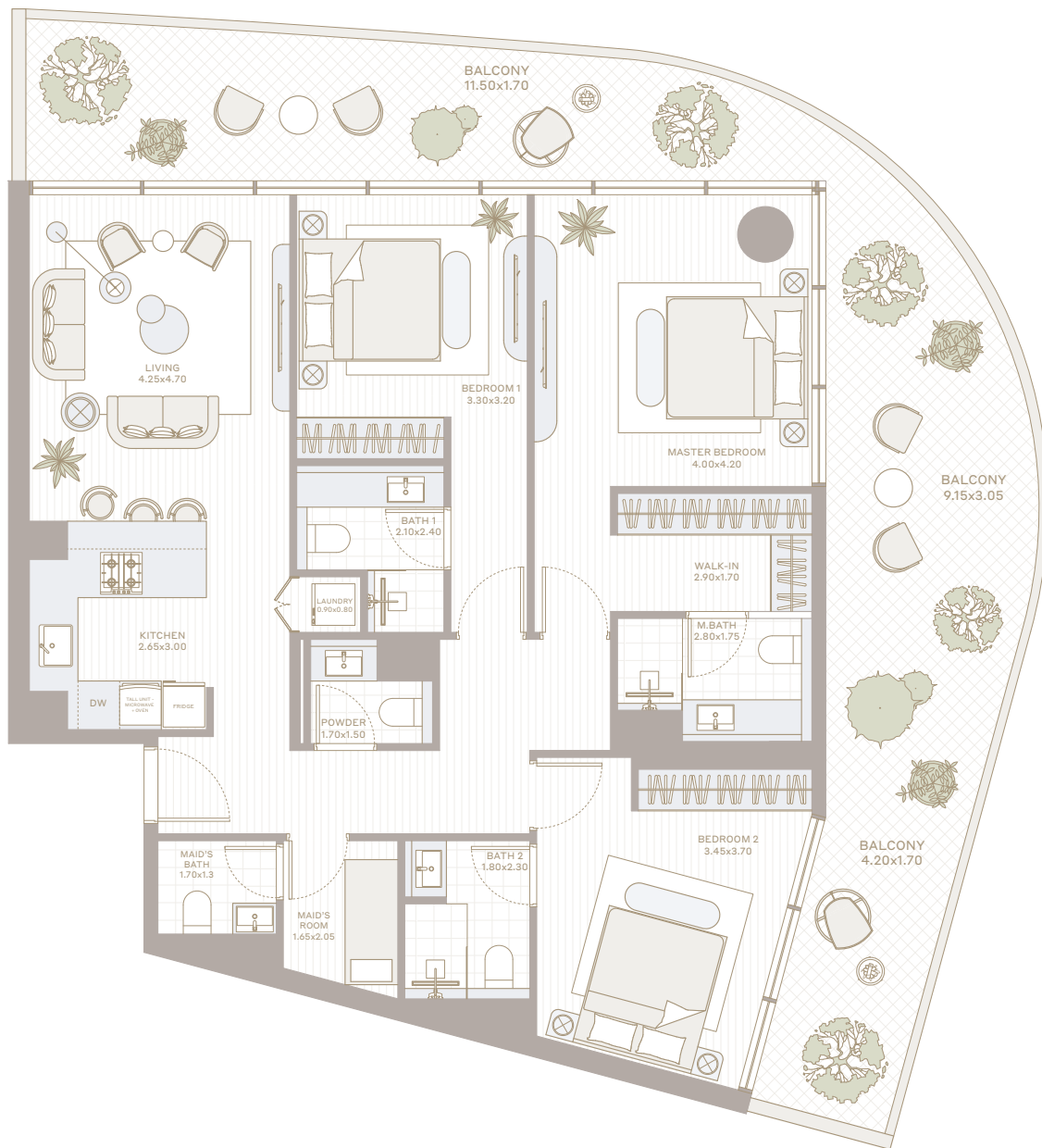
POOL & GARDEN  
VIEW

BOULEVARD /  
COMMUNITY  
PARK VIEW

LEVEL 1



CENTRAL PARK



All the dimensions are in square feet. The Unit shown is typical, and actual Unit may vary in dimensions, areas, layout, material specification, orientation, and location. Some of the Units may have a mirrored layout of the above plan. Unit Windows, Façade, Balcony door location, Fixtures, Kitchen Cabinets, Sanitary ware, and Wardrobes, including each of their location as shown in the plan is indicative and subject to revision by the Seller. All fixtures, fittings, goods, accessories, and furniture reflected/displayed in this plan(s) are strictly illustrative and representational (not actual) in nature and are only for the purpose of illustrating /reflecting one of the possible layouts which the Purchaser could arrange after the Unit is handed over and do not form part of the Unit. No furniture, goods, accessories are included in the sale, unless such items are specifically included in Schedule A of the SPA.



TYPE

03

3 BHK

INTERIOR  
1,331 SQ.FT.

TOTAL  
1,670 SQ.FT.

EXTERIOR  
340 SQ.FT.

FLOORS  
2-10

BOULEVARD / LAKE VIEW



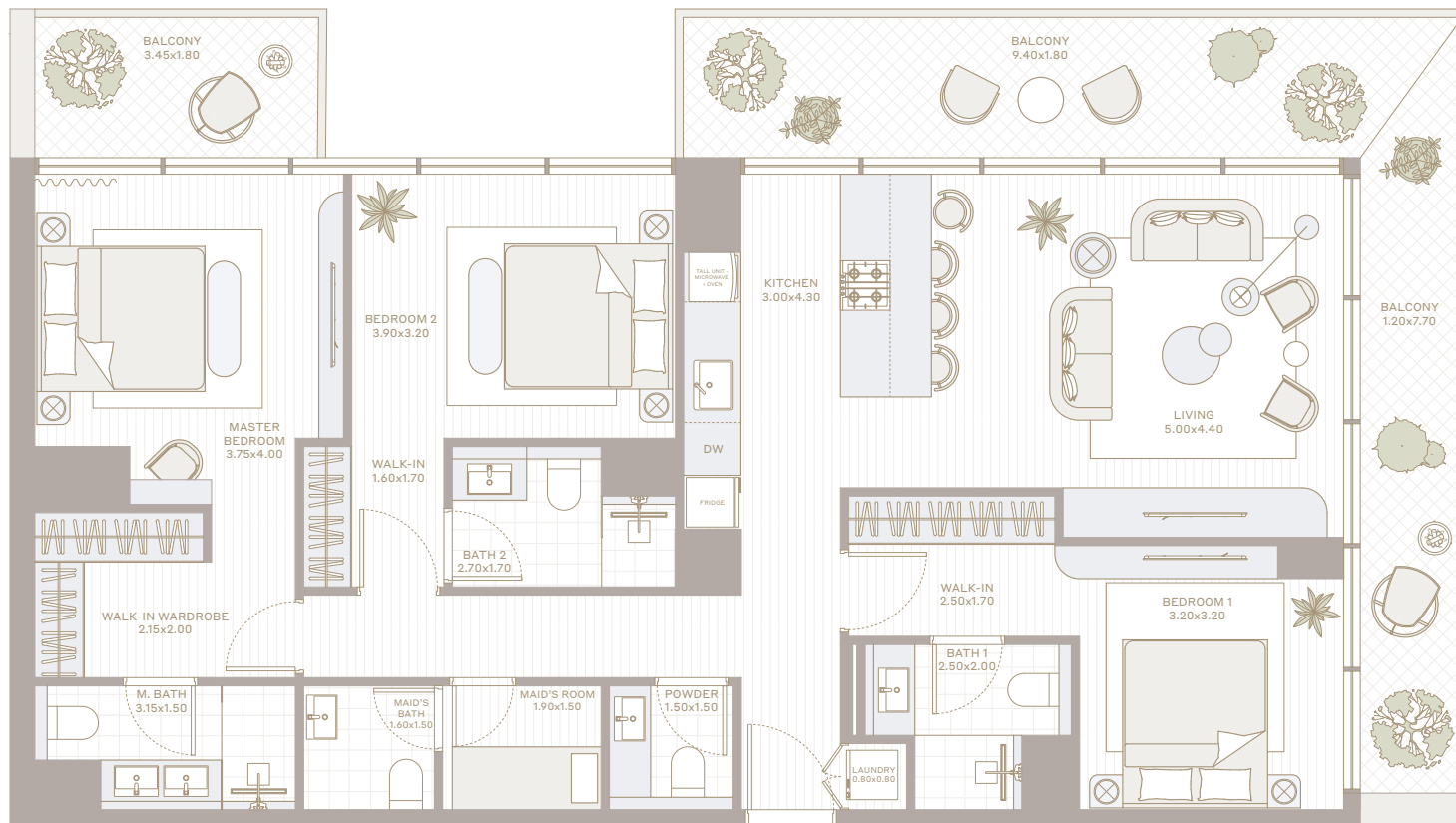
POOL & GARDEN  
VIEW

BOULEVARD /  
COMMUNITY  
PARK VIEW

LEVEL 2-5

CENTRAL PARK

LEVEL 6-10



All the dimensions are in square feet. The Unit shown is typical, and actual Unit may vary in dimensions, areas, layout, material specification, orientation, and location. Some of the Units may have a mirrored layout of the above plan. Unit Windows, Façade, Balcony door location, Fixtures, Kitchen Cabinets, Sanitary ware, and Wardrobes, including each of their location as shown in the plan is indicative and subject to revision by the Seller. All fixtures, fittings, goods, accessories, and furniture reflected/displayed in this plan(s) are strictly illustrative and representational (not actual) in nature and are only for the purpose of illustrating /reflecting one of the possible layouts which the Purchaser could arrange after the Unit is handed over and do not form part of the Unit. No furniture, goods, accessories are included in the sale, unless such items are specifically included in Schedule A of the SPA.