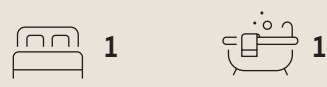


# TOWER - 1



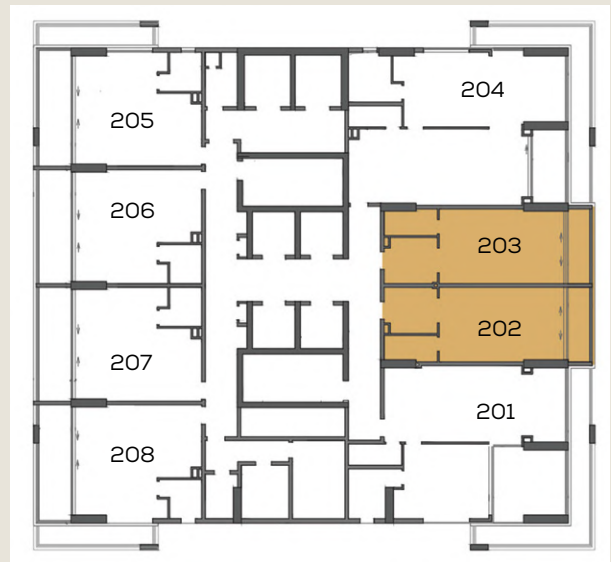
# STUDIO T1



Suite area	45.66 sq.m.	491.48 sq.ft.
Balcony area	05.72tsq.m.	61.57 sq.ft.
Net area	51.38 sq.m.	553.05 sq.ft.

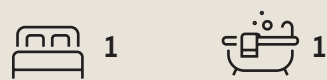
**Units**  
202, 302, 402, 502, 602, 702, 802, 902, 1002, 1102, 1202, 1302, 1402, 1502, 1602, 1702, 1802, 1902  
203, 303, 403, 503, 603, 703, 803, 903, 1003, 1103, 1203, 1303, 1403, 1503, 1603, 1703, 1803, 1903

**No. of Units** 36



All room dimensions are measured to structural elements and exclude wall finished and construction tolerance. All dimensions have been provided by our consultant architects. All materials, dimensions & drawings are approximate. Information is subject to change without notice. Actual suite area may vary from the stated area. Drawing not to scale. The developer reserves the right to make revisions. Calculation of suit area is measured as the area bounded by the centre line of demising or partition walls separating one unit from another unit, the exterior face of all exterior walls and the exterior face of the corridor wall enclosing the adjoining unit. Calculation of balcony area is measured as the area bounded by the centre line of demising or partition walls separating one unit from another unit, the outmost face of the enclosing guard and the external face of the unit adjoining the balcony. The units are measured at typical floor in the building. The columns may vary in size depending on the floor level.

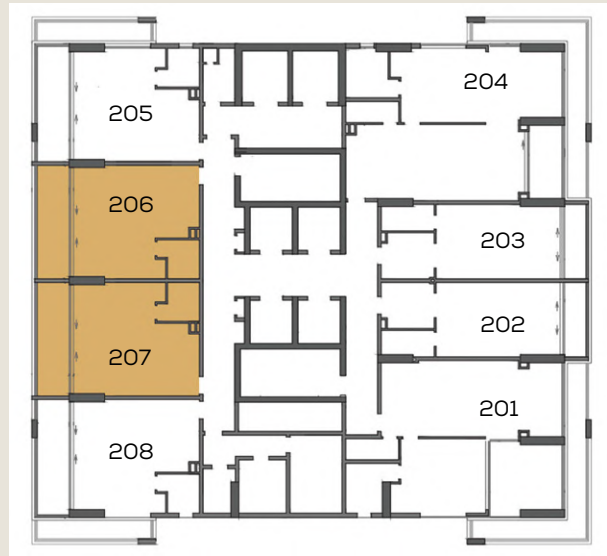
# STUDIO T2



Suite area	48.45 sq.m.	521.51 sq.ft.
Balcony area	19.96 sq.m.	214.85 sq.ft.
Net area	68.41 sq.m.	736.36 sq.ft.

**Units** 206, 306, 406, 506, 606, 706, 806, 906, 1006, 1106, 1206, 1306, 1406, 1506, 1606, 1706, 1806, 1906, 207, 307, 407, 507, 607, 707, 807, 907, 1007, 1107, 1207, 1307, 1407, 1507, 1607, 1707, 1807, 1907

**No. of Units** 36



All room dimensions are measured to structural elements and exclude wall finished and construction tolerance. All dimensions have been provided by our consultant architects. All materials, dimensions & drawings are approximate. Information is subject to change without notice. Actual suite area may vary from the stated area. Drawing not to scale. The developer reserves the right to make revisions. Calculation of suit area is measured as the area bounded by the centre line of demising or partition walls separating one unit from another unit, the exterior face of all exterior walls and the exterior face of the corridor wall enclosing the adjoining unit. Calculation of balcony area is measured as the area bounded by the centre line of demising or partition walls separating one unit from another unit, the outmost face of the enclosing guard and the external face of the unit adjoining the balcony. The units are measured at typical floor in the building. The columns may vary in size depending on the floor level.



# STUDIO T3



Suite area	48.48 sq.m.	521.83 sq.ft.
Balcony area	22.16 sq.m.	238.53 sq.ft.
Net area	70.64 sq.m.	760.36 sq.ft.

**Units**

205, 405, 605, 805, 1005,  
1205, 1405, 1605, 1805  
208, 408, 608, 808, 1008,  
1208, 1408, 1608, 1808

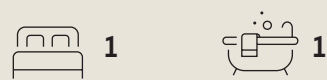
**No. of Units** 18



All room dimensions are measured to structural elements and exclude wall finished and construction tolerance. All dimensions have been provided by our consultant architects. All materials, dimensions & drawings are approximate. Information is subject to change without notice. Actual suite area may vary from the stated area. Drawing not to scale. The developer reserves the right to make revisions. Calculation of suit area is measured as the area bounded by the centre line of demising or partition walls separating one unit from another unit, the exterior face of all exterior walls and the exterior face of the corridor wall enclosing the adjoining unit. Calculation of balcony area is measured as the area bounded by the centre line of demising or partition walls separating one unit from another unit, the outmost face of the enclosing guard and the external face of the unit adjoining the balcony. The units are measured at typical floor in the building. The columns may vary in size depending on the floor level.



# STUDIO T4



Suite area	48.29tsq.m.	519.79 sq.ft.
Balcony area	12.93 sq.m.	139.18 sq.ft.
Net area	61.22 sq.m.	658.97 sq.ft.

**Units** 305, 505, 705, 905, 1105,  
1305, 1505, 1705, 1905  
308, 508, 708, 908, 1108,  
1308, 1508, 1708, 1908

**No. of Units** 18



All room dimensions are measured to structural elements and exclude wall finished and construction tolerance. All dimensions have been provided by our consultant architects. All materials, dimensions & drawings are approximate. Information is subject to change without notice. Actual suite area may vary from the stated area. Drawing not to scale. The developer reserves the right to make revisions. Calculation of suit area is measured as the area bounded by the centre line of demising or partition walls separating one unit from another unit, the exterior face of all exterior walls and the exterior face of the corridor wall enclosing the adjoining unit. Calculation of balcony area is measured as the area bounded by the centre line of demising or partition walls separating one unit from another unit, the outmost face of the enclosing guard and the external face of the unit adjoining the balcony. The units are measured at typical floor in the building. The columns may vary in size depending on the floor level.



# 1 BED T1



Suite area	72.84 sq.m.	784.04 sq.ft.
Balcony area	26.69 sq.m.	287.29 sq.ft.
Net area	99.53 sq.m.	1071.33 sq.ft.

Units 301, 501, 701, 901, 1101, 1301, 1501, 1701, 1901

No. of Units 09



All room dimensions are measured to structural elements and exclude wall finished and construction tolerance. All dimensions have been provided by our consultant architects. All materials, dimensions & drawings are approximate. Information is subject to change without notice. Actual suite area may vary from the stated area. Drawing not to scale. The developer reserves the right to make revisions. Calculation of suite area is measured as the area bounded by the centre line of demising or partition walls separating one unit from another unit, the exterior face of all exterior walls and the exterior face of the corridor wall enclosing the adjoining unit. Calculation of balcony area is measured as the area bounded by the centre line of demising or partition walls separating one unit from another unit, the outmost face of the enclosing guard and the external face of the unit adjoining the balcony. The units are measured at typical floor in the building. The columns may vary in size depending on the floor level.



# 1 BED T1 - J



Suite area	72.75 sq.m.	783.07 sq.ft.
Balcony area	48.06 sq.m.	517.31 sq.ft.
Net area	120.81 sq.m.	1300.39 sq.ft.
Jacuzzi Size	(2.310m x 2.310m)	

Units 201, 401, 601, 801, 1001, 1201, 1401, 1601, 1801

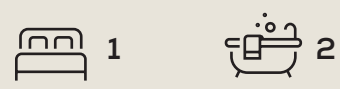
No. of Units 09



All room dimensions are measured to structural elements and exclude wall finished and construction tolerance. All dimensions have been provided by our consultant architects. All materials, dimensions & drawings are approximate. Information is subject to change without notice. Actual suite area may vary from the stated area. Drawing not to scale. The developer reserves the right to make revisions. Calculation of suite area is measured as the area bounded by the centre line of demising or partition walls separating one unit from another unit, the exterior face of all exterior walls and the exterior face of the corridor wall enclosing the adjoining unit. Calculation of balcony area is measured as the area bounded by the centre line of demising or partition walls separating one unit from another unit, the outmost face of the enclosing guard and the external face of the unit adjoining the balcony. The units are measured at typical floor in the building. The columns may vary in size depending on the floor level.



# 1 BED T2



Suite area	81.55 sq.m.	877.80 sq.ft.
Balcony area	26.68 sq.m.	287.18 sq.ft.
Net area	108.23 sq.m.	1164.98 sq.ft.

Units 304, 504, 704, 904, 1104, 1304, 1504, 1704, 1904

No. of Units 09



All room dimensions are measured to structural elements and exclude wall finished and construction tolerance. All dimensions have been provided by our consultant architects. All materials, dimensions & drawings are approximate. Information is subject to change without notice. Actual suite area may vary from the stated area. Drawing not to scale. The developer reserves the right to make revisions. Calculation of suite area is measured as the area bounded by the centre line of demising or partition walls separating one unit from another unit, the exterior face of all exterior walls and the exterior face of the corridor wall enclosing the adjoining unit. Calculation of balcony area is measured as the area bounded by the centre line of demising or partition walls separating one unit from another unit, the outmost face of the enclosing guard and the external face of the unit adjoining the balcony. The units are measured at typical floor in the building. The columns may vary in size depending on the floor level.



# 1 BED T2 - J



Suite area	81.39 sq.m.	876.07 sq.ft.
Balcony area	48.10 sq.m.	517.74 sq.ft.
Net area	129.49 sq.m.	1393.82 sq.ft.
Jacuzzi Size	(2.310m x 2.310m)	

Units 204, 404, 604, 804, 1004, 1204, 1404, 1604, 1804

No. of Units 09



All room dimensions are measured to structural elements and exclude wall finished and construction tolerance. All dimensions have been provided by our consultant architects. All materials, dimensions & drawings are approximate. Information is subject to change without notice. Actual suite area may vary from the stated area. Drawing not to scale. The developer reserves the right to make revisions. Calculation of suite area is measured as the area bounded by the centre line of demising or partition walls separating one unit from another unit, the exterior face of all exterior walls and the exterior face of the corridor wall enclosing the adjoining unit. Calculation of balcony area is measured as the area bounded by the centre line of demising or partition walls separating one unit from another unit, the outmost face of the enclosing guard and the external face of the unit adjoining the balcony. The units are measured at typical floor in the building. The columns may vary in size depending on the floor level.



# TOWER - 2



# 1 BED T1



Suite area	72.49 sq.m.	780.28 sq.ft.
Balcony area	18.52 sq.m.	199.35 sq.ft.
Net area	91.01 sq.m.	979.62 sq.ft.

Units  
203, 303, 403, 503, 603,  
703, 803, 903, 1003, 1103,  
1203, 1303, 1403, 1503, 1603,  
1703, 1803, 1903

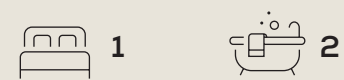
No. of Units 18



All room dimensions are measured to structural elements and exclude wall finished and construction tolerance. All dimensions have been provided by our consultant architects. All materials, dimensions & drawings are approximate. Information is subject to change without notice. Actual suite area may vary from the stated area. Drawing not to scale. The developer reserves the right to make revisions. Calculation of suite area is measured as the area bounded by the centre line of demising or partition walls separating one unit from another unit, the exterior face of all exterior walls and the exterior face of the corridor wall enclosing the adjoining unit. Calculation of balcony area is measured as the area bounded by the centre line of demising or partition walls separating one unit from another unit, the outmost face of the enclosing guard and the external face of the unit adjoining the balcony. The units are measured at typical floor in the building. The columns may vary in size depending on the floor level.



# 1 BED T2



Suite area	59.09 sq.m.	636.04 sq.ft.
Balcony area	05.86 sq.m.	63.08 sq.ft.
Net area	64.95 sq.m.	699.12 sq.ft.

Units  
205, 305, 405, 505, 605,  
705, 805, 905, 1005, 1105,  
1205, 1305, 1405, 1505, 1605,  
1705, 1805, 1905

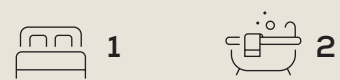
No. of Units18



All room dimensions are measured to structural elements and exclude wall finished and construction tolerance. All dimensions have been provided by our consultant architects. All materials, dimensions & drawings are approximate. Information is subject to change without notice. Actual suite area may vary from the stated area. Drawing not to scale. The developer reserves the right to make revisions. Calculation of suite area is measured as the area bounded by the centre line of demising or partition walls separating one unit from another unit, the exterior face of all exterior walls and the exterior face of the corridor wall enclosing the adjoining unit. Calculation of balcony area is measured as the area bounded by the centre line of demising or partition walls separating one unit from another unit, the outmost face of the enclosing guard and the external face of the unit adjoining the balcony. The units are measured at typical floor in the building. The columns may vary in size depending on the floor level.



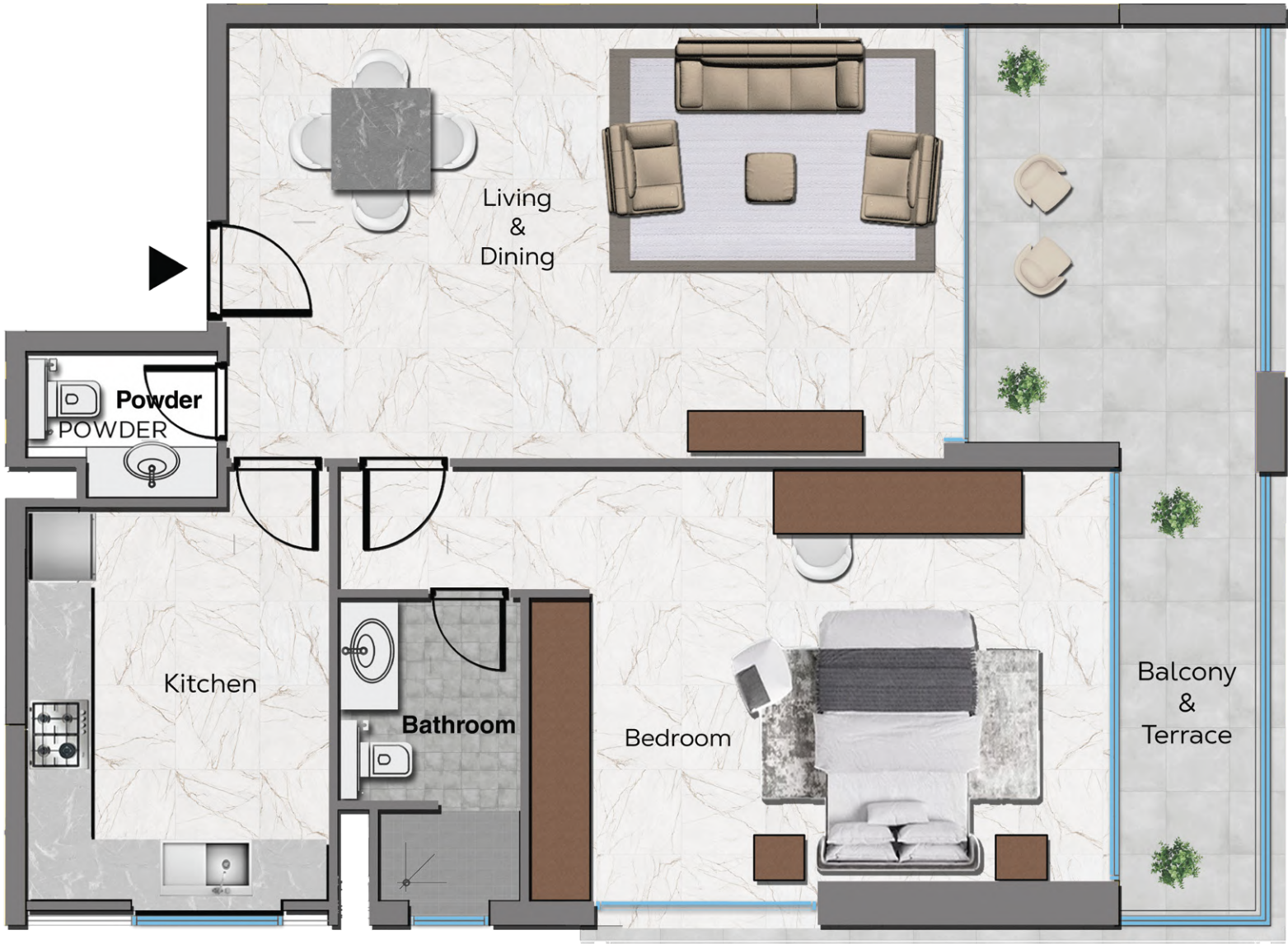
# 1 BED T3



Suite area	83.96 sq.m.	903.74 sq.ft.
Balcony area	19.92 sq.m.	214.42 sq.ft.
Net area	103.88 sq.m.	1118.16 sq.ft.

Units 304, 504, 704, 904, 1104, 1304, 1504, 1704, 1904

No. of Units 09



All room dimensions are measured to structural elements and exclude wall finished and construction tolerance. All dimensions have been provided by our consultant architects. All materials, dimensions & drawings are approximate. Information is subject to change without notice. Actual suite area may vary from the stated area. Drawing not to scale. The developer reserves the right to make revisions. Calculation of suite area is measured as the area bounded by the centre line of demising or partition walls separating one unit from another unit, the exterior face of all exterior walls and the exterior face of the corridor wall enclosing the adjoining unit. Calculation of balcony area is measured as the area bounded by the centre line of demising or partition walls separating one unit from another unit, the outmost face of the enclosing guard and the external face of the unit adjoining the balcony. The units are measured at typical floor in the building. The columns may vary in size depending on the floor level.



# 1 BED T4



Suite area	84.19 sq.m.	906.21 sq.ft.
Balcony area	29.45 sq.m.	317.00 sq.ft.
Net area	113.64 sq.m.	1223.21 sq.ft.

Units 204, 404, 604, 804, 1004, 1204, 1404, 1604, 1804

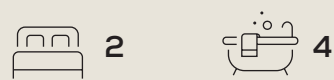
No. of Units 09



All room dimensions are measured to structural elements and exclude wall finished and construction tolerance. All dimensions have been provided by our consultant architects. All materials, dimensions & drawings are approximate. Information is subject to change without notice. Actual suite area may vary from the stated area. Drawing not to scale. The developer reserves the right to make revisions. Calculation of suite area is measured as the area bounded by the centre line of demising or partition walls separating one unit from another unit, the exterior face of all exterior walls and the exterior face of the corridor wall enclosing the adjoining unit. Calculation of balcony area is measured as the area bounded by the centre line of demising or partition walls separating one unit from another unit, the outmost face of the enclosing guard and the external face of the unit adjoining the balcony. The units are measured at typical floor in the building. The columns may vary in size depending on the floor level.



# 2 BED T1



Suite area	118.07 sq.m.	1270.89 sq.ft.
Balcony area	26.63 sq.m.	286.64 sq.ft.
Net area	144.70 sq.m.	1557.54 sq.ft.

Units 302, 502, 702, 902, 1102, 1302, 1502, 1702, 1902

No. of Units 09





# 2 BED T1 - J



Suite area	118.07 sq.m.	1270.89 sq.ft.
Balcony area	36.09 sq.m.	388.47 sq.ft.
Net area	154.16 sq.m.	1659.36 sq.ft.
Jacuzzi Size	(2.310m x 2.310m)	

Units 202, 402, 602, 802, 1002, 1202, 1402, 1602, 1802

No. of Units 09



All room dimensions are measured to structural elements and exclude wall finished and construction tolerance. All dimensions have been provided by our consultant architects. All materials, dimensions & drawings are approximate. Information is subject to change without notice. Actual suite area may vary from the stated area. Drawing not to scale. The developer reserves the right to make revisions. Calculation of suite area is measured as the area bounded by the centre line of demising or partition walls separating one unit from another unit, the exterior face of all exterior walls and the exterior face of the corridor wall enclosing the adjoining unit. Calculation of balcony area is measured as the area bounded by the centre line of demising or partition walls separating one unit from another unit, the outmost face of the enclosing guard and the external face of the unit adjoining the balcony. The units are measured at typical floor in the building. The columns may vary in size depending on the floor level.



# 3 BED T1



Suite area	185.56 sq.m.	1997.35 sq.ft.
Balcony area	68.05 sq.m.	732.48 sq.ft.
Net area	253.61 sq.m.	2729.84 sq.ft.

Units 101, 301, 501, 701, 901, 1101, 1301, 1501, 1701, 1901

No. of Units 10



All room dimensions are measured to structural elements and exclude wall finished and construction tolerance. All dimensions have been provided by our consultant architects. All materials, dimensions & drawings are approximate. Information is subject to change without notice. Actual suite area may vary from the stated area. Drawing not to scale. The developer reserves the right to make revisions. Calculation of suite area is measured as the area bounded by the centre line of demising or partition walls separating one unit from another unit, the exterior face of all exterior walls and the exterior face of the corridor wall enclosing the adjoining unit. Calculation of balcony area is measured as the area bounded by the centre line of demising or partition walls separating one unit from another unit, the outmost face of the enclosing guard and the external face of the unit adjoining the balcony. The units are measured at typical floor in the building. The columns may vary in size depending on the floor level.



# 3 BED T1 - J



Suite area	185.54 sq.m.	1997.14 sq.ft.
Balcony area	85.30 sq.m.	918.16 sq.ft.
Net area	270.84 sq.m.	2915.30 sq.ft.
Jacuzzi Size	(2.310m x 2.310m)	

Units 201, 401, 601, 801, 1001, 1201, 1401, 1601, 1801

No. of Units 09



All room dimensions are measured to structural elements and exclude wall finished and construction tolerance. All dimensions have been provided by our consultant architects. All materials, dimensions & drawings are approximate. Information is subject to change without notice. Actual suite area may vary from the stated area. Drawing not to scale. The developer reserves the right to make revisions. Calculation of suite area is measured as the area bounded by the centre line of demising or partition walls separating one unit from another unit, the exterior face of all exterior walls and the exterior face of the corridor wall enclosing the adjoining unit. Calculation of balcony area is measured as the area bounded by the centre line of demising or partition walls separating one unit from another unit, the outmost face of the enclosing guard and the external face of the unit adjoining the balcony. The units are measured at typical floor in the building. The columns may vary in size depending on the floor level.