

1 BEDROOM

8

TYPE

1A 1 BHK

FLOORS

2 - 8
10 - 22

INTERIOR

703 SQ.FT.

EXTERIOR

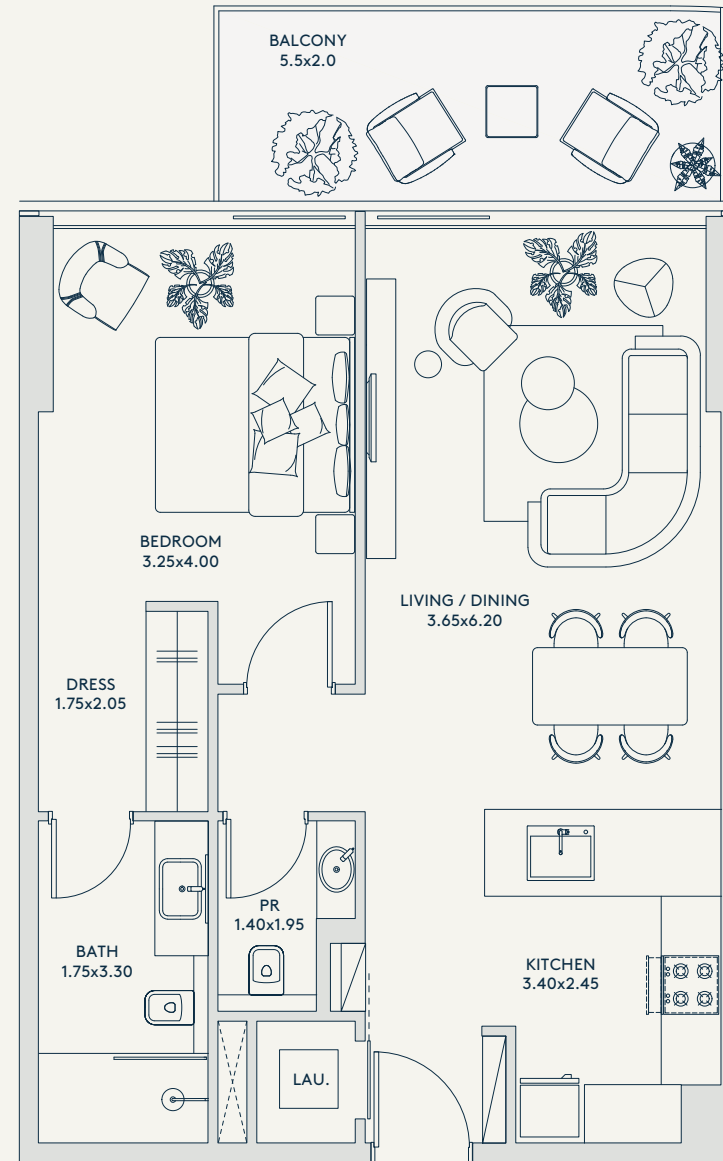
114 SQ.FT.

TOTAL

817 SQ.FT.

RIVAGE

AL REEM ISLAND



SEA/
MANGROVE
VIEW

SEA & CITY VIEW

CENTRAL
PARK, CITY &
MANGROVE VIEW

LEVEL 10 TO 22

MANGROVE VIEW

LEVEL 2 TO 8

ALL THE DIMENSIONS ARE IN METERS. THE UNIT SHOWN IS TYPICAL, AND ACTUAL UNIT MAY VARY IN DIMENSIONS, AREAS, LAYOUT, MATERIAL SPECIFICATION, ORIENTATION, AND LOCATION. SOME OF THE UNITS MAY HAVE A MIRRORED LAYOUT OF THE ABOVE PLAN. UNIT WINDOWS, FAÇADE, BALCONY DOOR LOCATION, FIXTURES, KITCHEN CABINETS, SANITARY WARE, AND WARDROBES, INCLUDING EACH OF THEIR LOCATION AS SHOWN IN THE PLAN IS INDICATIVE AND SUBJECT TO REVISION BY THE SELLER. ALL FIXTURES, FITTINGS, GOODS, ACCESSORIES, AND FURNITURE REFLECTED/DISPLAYED IN THIS PLAN(S) ARE STRICTLY ILLUSTRATIVE AND REPRESENTATIONAL (NOT ACTUAL) IN NATURE AND ARE ONLY FOR THE PURPOSE OF ILLUSTRATING /REFLECTING ONE OF THE POSSIBLE LAYOUTS WHICH THE PURCHASER COULD ARRANGE AFTER THE UNIT IS HANDED OVER AND DO NOT FORM PART OF THE UNIT. NO FURNITURE, GOODS, ACCESSORIES ARE INCLUDED IN THE SALE, UNLESS SUCH ITEMS ARE SPECIFICALLY INCLUDED IN SCHEDULE A OF THE SPA.



TYPE

1B 1 BHK

FLOORS

2 - 22

INTERIOR

683 SQ.FT.

TOTAL

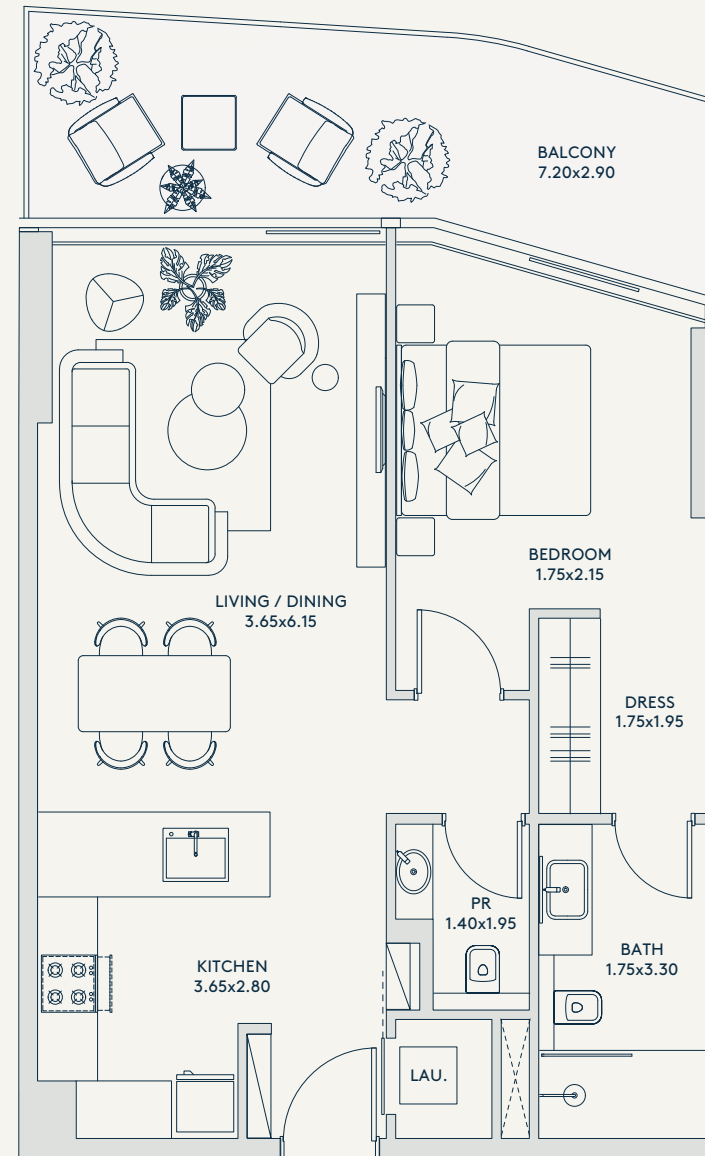
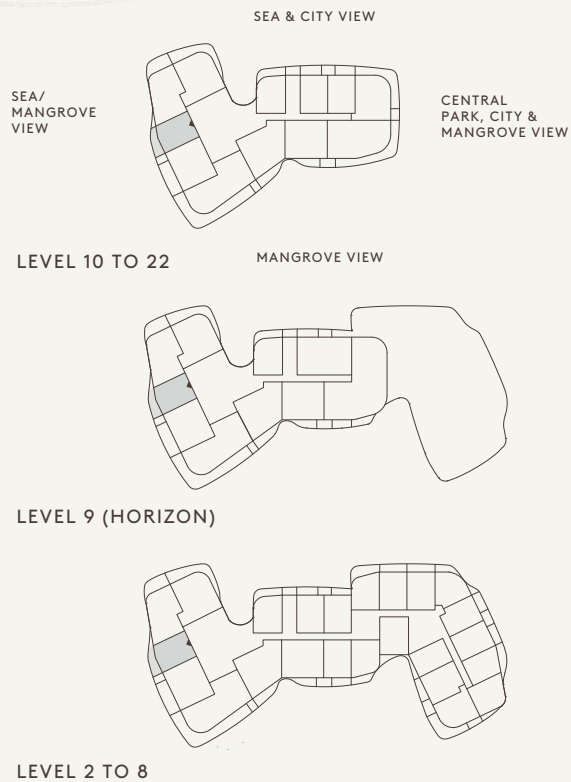
884 SQ.FT.

EXTERIOR

201 SQ.FT.

RIVAGE

AL REEM ISLAND



ALL THE DIMENSIONS ARE IN METERS. THE UNIT SHOWN IS TYPICAL, AND ACTUAL UNIT MAY VARY IN DIMENSIONS, AREAS, LAYOUT, MATERIAL SPECIFICATION, ORIENTATION, AND LOCATION. SOME OF THE UNITS MAY HAVE A MIRRORED LAYOUT OF THE ABOVE PLAN. UNIT WINDOWS, FAÇADE, BALCONY DOOR LOCATION, FIXTURES, KITCHEN CABINETS, SANITARY WARE, AND WARDROBES, INCLUDING EACH OF THEIR LOCATION AS SHOWN IN THE PLAN IS INDICATIVE AND SUBJECT TO REVISION BY THE SELLER. ALL FIXTURES, FITTINGS, GOODS, ACCESSORIES, AND FURNITURE REFLECTED/DISPLAYED IN THIS PLAN(S) ARE STRICTLY ILLUSTRATIVE AND REPRESENTATIONAL (NOT ACTUAL) IN NATURE AND ARE ONLY FOR THE PURPOSE OF ILLUSTRATING /REFLECTING ONE OF THE POSSIBLE LAYOUTS WHICH THE PURCHASER COULD ARRANGE AFTER THE UNIT IS HANDED OVER AND DO NOT FORM PART OF THE UNIT. NO FURNITURE, GOODS, ACCESSORIES ARE INCLUDED IN THE SALE, UNLESS SUCH ITEMS ARE SPECIFICALLY INCLUDED IN SCHEDULE A OF THE SPA.



TYPE

2A 1 BHK

FLOORS

2 - 22

INTERIOR

715 SQ.FT.

TOTAL

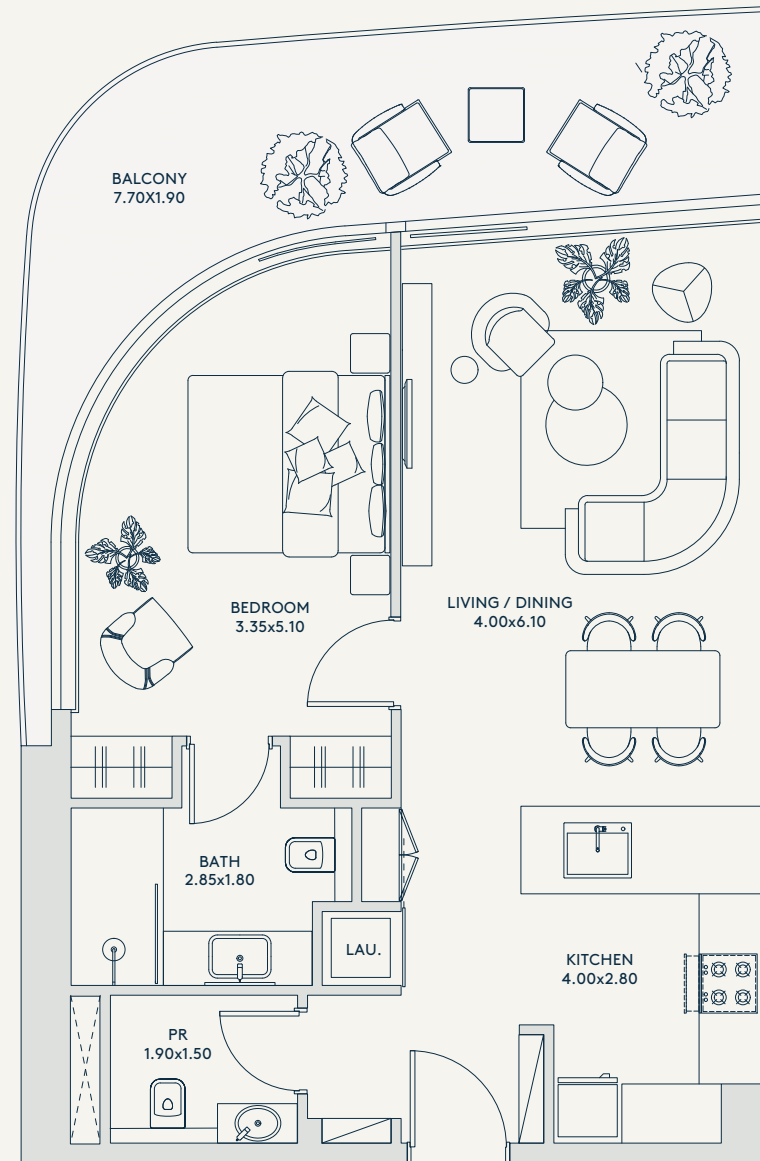
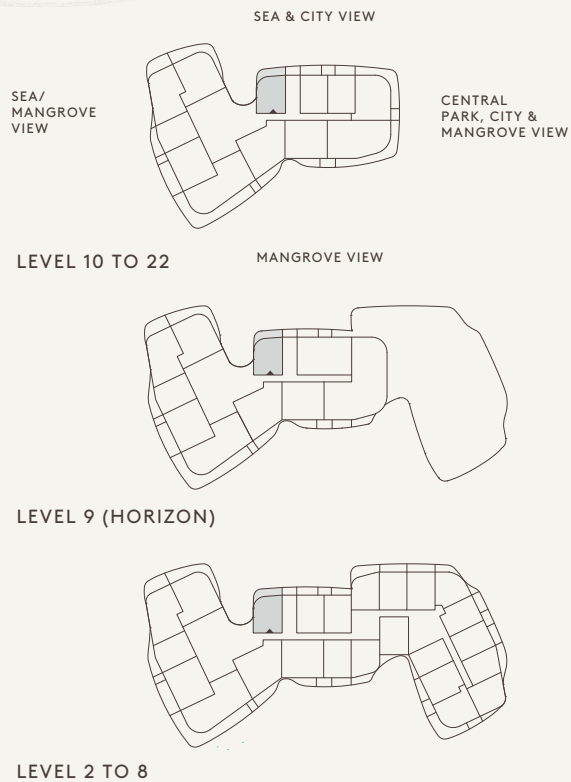
913 SQ.FT.

RIVAGE

AL REEM ISLAND

EXTERIOR

198 SQ.FT.



ALL THE DIMENSIONS ARE IN METERS. THE UNIT SHOWN IS TYPICAL, AND ACTUAL UNIT MAY VARY IN DIMENSIONS, AREAS, LAYOUT, MATERIAL SPECIFICATION, ORIENTATION, AND LOCATION. SOME OF THE UNITS MAY HAVE A MIRRORED LAYOUT OF THE ABOVE PLAN. UNIT WINDOWS, FAÇADE, BALCONY DOOR LOCATION, FIXTURES, KITCHEN CABINETS, SANITARY WARE, AND WARDROBES, INCLUDING EACH OF THEIR LOCATION AS SHOWN IN THE PLAN IS INDICATIVE AND SUBJECT TO REVISION BY THE SELLER. ALL FIXTURES, FITTINGS, GOODS, ACCESSORIES, AND FURNITURE REFLECTED/DISPLAYED IN THIS PLAN(S) ARE STRICTLY ILLUSTRATIVE AND REPRESENTATIONAL (NOT ACTUAL) IN NATURE AND ARE ONLY FOR THE PURPOSE OF ILLUSTRATING /REFLECTING ONE OF THE POSSIBLE LAYOUTS WHICH THE PURCHASER COULD ARRANGE AFTER THE UNIT IS HANDED OVER AND DO NOT FORM PART OF THE UNIT. NO FURNITURE, GOODS, ACCESSORIES ARE INCLUDED IN THE SALE, UNLESS SUCH ITEMS ARE SPECIFICALLY INCLUDED IN SCHEDULE A OF THE SPA.



TYPE

2B 1 BHK

FLOORS

2 - 8

INTERIOR

641 SQ.FT.

TOTAL

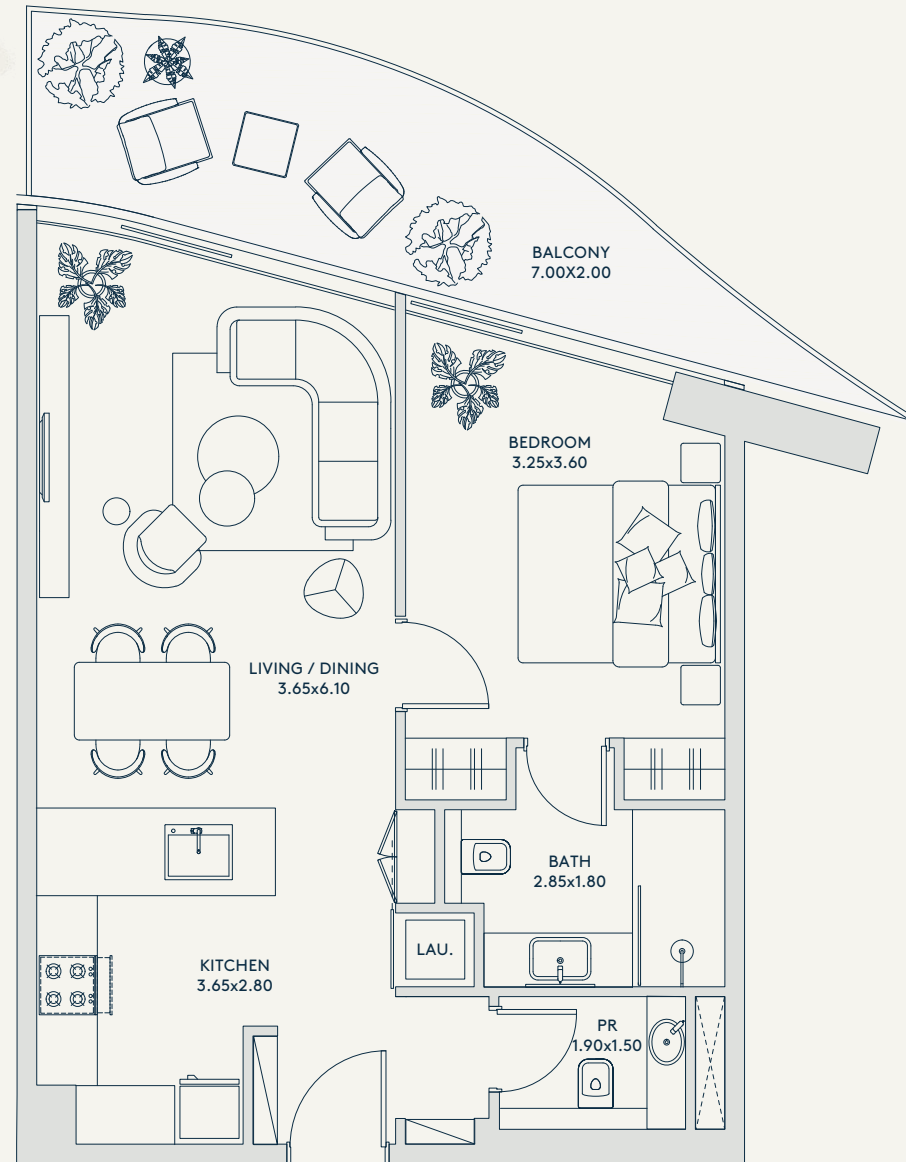
801 SQ.FT.

RIVAGE

AL REEM ISLAND

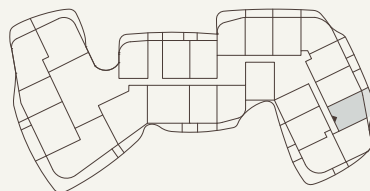
EXTERIOR

160 SQ.FT.



SEA & CITY VIEW

SEA/
MANGROVE
VIEW



CENTRAL
PARK, CITY &
MANGROVE VIEW

LEVEL 2 TO 8

MANGROVE VIEW

ALL THE DIMENSIONS ARE IN METERS. THE UNIT SHOWN IS TYPICAL, AND ACTUAL UNIT MAY VARY IN DIMENSIONS, AREAS, LAYOUT, MATERIAL SPECIFICATION, ORIENTATION, AND LOCATION. SOME OF THE UNITS MAY HAVE A MIRRORED LAYOUT OF THE ABOVE PLAN. UNIT WINDOWS, FAÇADE, BALCONY DOOR LOCATION, FIXTURES, KITCHEN CABINETS, SANITARY WARE, AND WARDROBES, INCLUDING EACH OF THEIR LOCATION AS SHOWN IN THE PLAN IS INDICATIVE AND SUBJECT TO REVISION BY THE SELLER. ALL FIXTURES, FITTINGS, GOODS, ACCESSORIES, AND FURNITURE REFLECTED/DISPLAYED IN THIS PLAN(S) ARE STRICTLY ILLUSTRATIVE AND REPRESENTATIONAL (NOT ACTUAL) IN NATURE AND ARE ONLY FOR THE PURPOSE OF ILLUSTRATING /REFLECTING ONE OF THE POSSIBLE LAYOUTS WHICH THE PURCHASER COULD ARRANGE AFTER THE UNIT IS HANDED OVER AND DO NOT FORM PART OF THE UNIT. NO FURNITURE, GOODS, ACCESSORIES ARE INCLUDED IN THE SALE, UNLESS SUCH ITEMS ARE SPECIFICALLY INCLUDED IN SCHEDULE A OF THE SPA.



TYPE

2C 1 BHK

FLOORS

2 - 8

INTERIOR

675 SQ.FT.

TOTAL

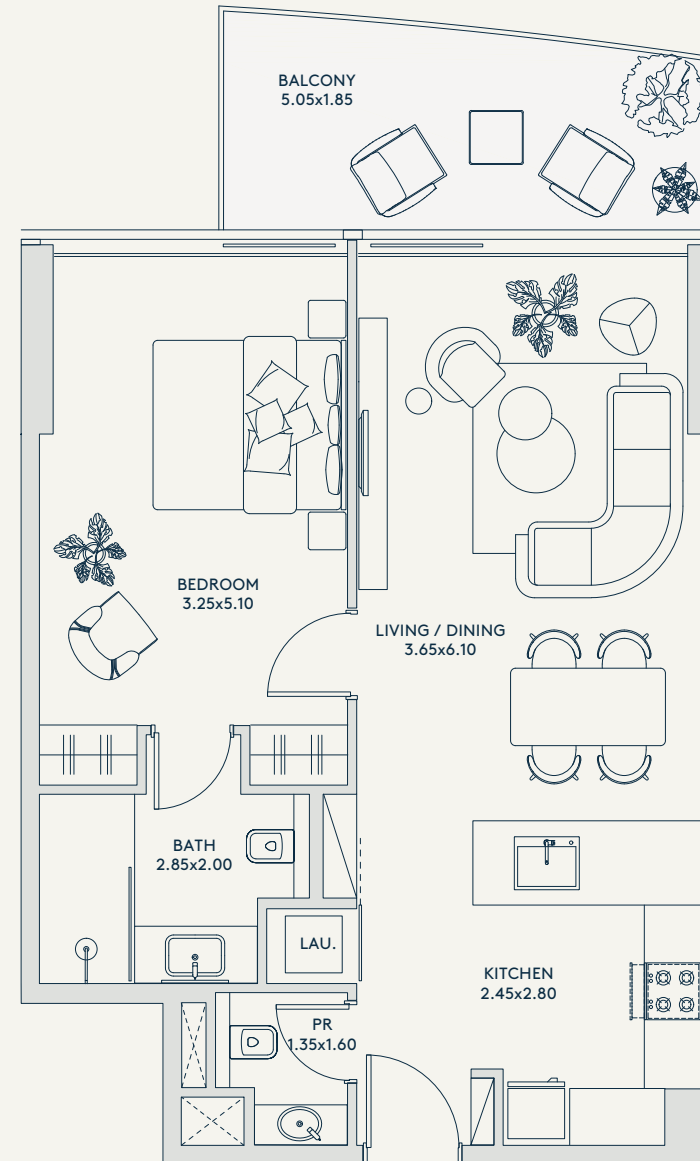
800 SQ.FT.

RIVAGE

AL REEM ISLAND

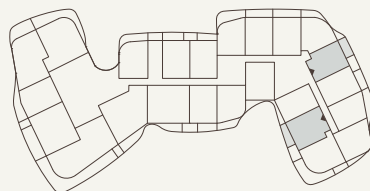
EXTERIOR

125 SQ.FT.



SEA & CITY VIEW

SEA/
MANGROVE
VIEW



CENTRAL
PARK, CITY &
MANGROVE VIEW

LEVEL 2 TO 8

MANGROVE VIEW

ALL THE DIMENSIONS ARE IN METERS. THE UNIT SHOWN IS TYPICAL, AND ACTUAL UNIT MAY VARY IN DIMENSIONS, AREAS, LAYOUT, MATERIAL SPECIFICATION, ORIENTATION, AND LOCATION. SOME OF THE UNITS MAY HAVE A MIRRORED LAYOUT OF THE ABOVE PLAN. UNIT WINDOWS, FAÇADE, BALCONY DOOR LOCATION, FIXTURES, KITCHEN CABINETS, SANITARY WARE, AND WARDROBES, INCLUDING EACH OF THEIR LOCATION AS SHOWN IN THE PLAN IS INDICATIVE AND SUBJECT TO REVISION BY THE SELLER. ALL FIXTURES, FITTINGS, GOODS, ACCESSORIES, AND FURNITURE REFLECTED/DISPLAYED IN THIS PLAN(S) ARE STRICTLY ILLUSTRATIVE AND REPRESENTATIONAL (NOT ACTUAL) IN NATURE AND ARE ONLY FOR THE PURPOSE OF ILLUSTRATING /REFLECTING ONE OF THE POSSIBLE LAYOUTS WHICH THE PURCHASER COULD ARRANGE AFTER THE UNIT IS HANDED OVER AND DO NOT FORM PART OF THE UNIT. NO FURNITURE, GOODS, ACCESSORIES ARE INCLUDED IN THE SALE, UNLESS SUCH ITEMS ARE SPECIFICALLY INCLUDED IN SCHEDULE A OF THE SPA.



TYPE

2D 1 BHK

FLOORS

2 - 8

INTERIOR

640 SQ.FT.

TOTAL

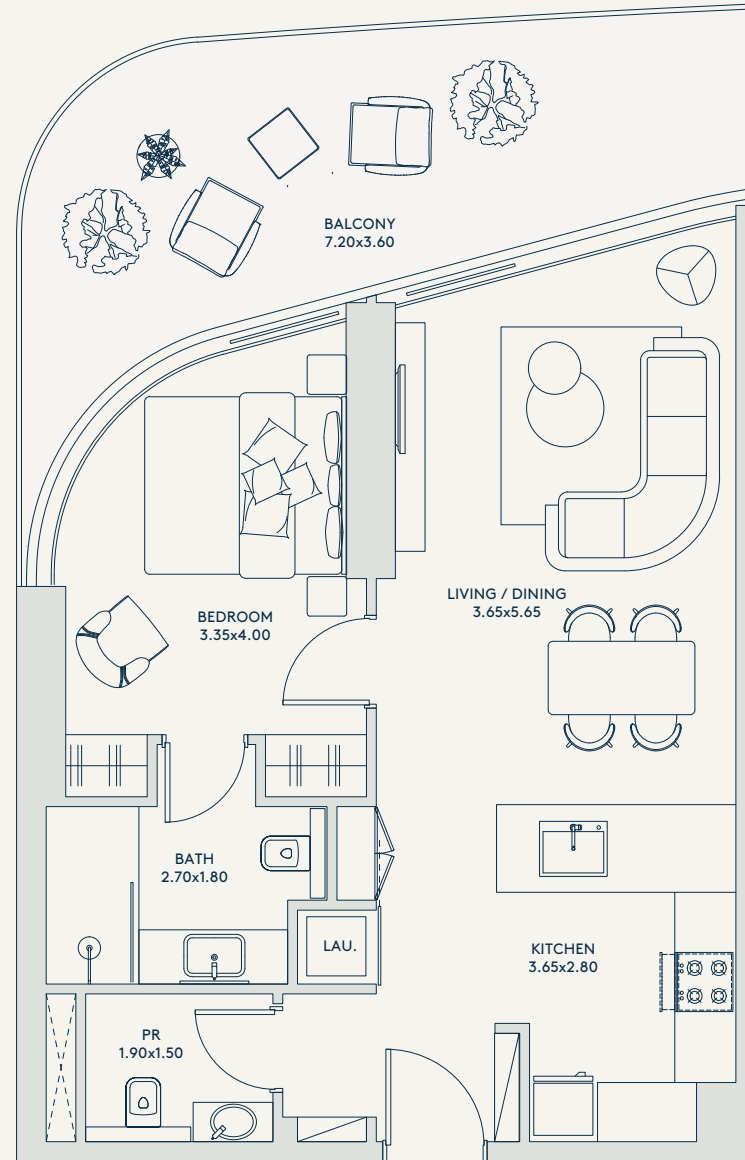
811 SQ.FT.

EXTERIOR

171 SQ.FT.

RIVAGE

AL REEM ISLAND



SEA & CITY VIEW

SEA/
MANGROVE
VIEW

CENTRAL
PARK, CITY &
MANGROVE VIEW

LEVEL 2 TO 8

MANGROVE VIEW

ALL THE DIMENSIONS ARE IN METERS. THE UNIT SHOWN IS TYPICAL, AND ACTUAL UNIT MAY VARY IN DIMENSIONS, AREAS, LAYOUT, MATERIAL SPECIFICATION, ORIENTATION, AND LOCATION. SOME OF THE UNITS MAY HAVE A MIRRORED LAYOUT OF THE ABOVE PLAN. UNIT WINDOWS, FAÇADE, BALCONY DOOR LOCATION, FIXTURES, KITCHEN CABINETS, SANITARY WARE, AND WARDROBES, INCLUDING EACH OF THEIR LOCATION AS SHOWN IN THE PLAN IS INDICATIVE AND SUBJECT TO REVISION BY THE SELLER. ALL FIXTURES, FITTINGS, GOODS, ACCESSORIES, AND FURNITURE REFLECTED/DISPLAYED IN THIS PLAN(S) ARE STRICTLY ILLUSTRATIVE AND REPRESENTATIONAL (NOT ACTUAL) IN NATURE AND ARE ONLY FOR THE PURPOSE OF ILLUSTRATING /REFLECTING ONE OF THE POSSIBLE LAYOUTS WHICH THE PURCHASER COULD ARRANGE AFTER THE UNIT IS HANDED OVER AND DO NOT FORM PART OF THE UNIT. NO FURNITURE, GOODS, ACCESSORIES ARE INCLUDED IN THE SALE, UNLESS SUCH ITEMS ARE SPECIFICALLY INCLUDED IN SCHEDULE A OF THE SPA.



TYPE

3A 1 BHK

FLOORS

2 - 8

INTERIOR

652 SQ.FT.

TOTAL

817 SQ.FT.

EXTERIOR

165 SQ.FT.

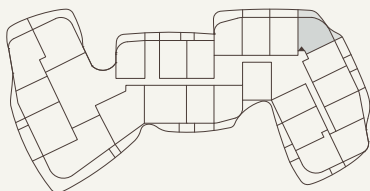
RIVAGE

AL REEM ISLAND



SEA & CITY VIEW

SEA/
MANGROVE
VIEW



CENTRAL
PARK, CITY &
MANGROVE VIEW

LEVEL 2 TO 8

MANGROVE VIEW

ALL THE DIMENSIONS ARE IN METERS. THE UNIT SHOWN IS TYPICAL, AND ACTUAL UNIT MAY VARY IN DIMENSIONS, AREAS, LAYOUT, MATERIAL SPECIFICATION, ORIENTATION, AND LOCATION. SOME OF THE UNITS MAY HAVE A MIRRORED LAYOUT OF THE ABOVE PLAN. UNIT WINDOWS, FAÇADE, BALCONY DOOR LOCATION, FIXTURES, KITCHEN CABINETS, SANITARY WARE, AND WARDROBES, INCLUDING EACH OF THEIR LOCATION AS SHOWN IN THE PLAN IS INDICATIVE AND SUBJECT TO REVISION BY THE SELLER. ALL FIXTURES, FITTINGS, GOODS, ACCESSORIES, AND FURNITURE REFLECTED/DISPLAYED IN THIS PLAN(S) ARE STRICTLY ILLUSTRATIVE AND REPRESENTATIONAL (NOT ACTUAL) IN NATURE AND ARE ONLY FOR THE PURPOSE OF ILLUSTRATING /REFLECTING ONE OF THE POSSIBLE LAYOUTS WHICH THE PURCHASER COULD ARRANGE AFTER THE UNIT IS HANDED OVER AND DO NOT FORM PART OF THE UNIT. NO FURNITURE, GOODS, ACCESSORIES ARE INCLUDED IN THE SALE, UNLESS SUCH ITEMS ARE SPECIFICALLY INCLUDED IN SCHEDULE A OF THE SPA.



2 BEDROOM

8

TYPE

1A 2 BHK

FLOORS

2 - 22

INTERIOR

1,248 SQ.FT.

TOTAL

1,455 SQ.FT

EXTERIOR

208 SQ.FT

RIVAGE

AL REEM ISLAND



SEA & CITY VIEW

SEA/
MANGROVE
VIEW

CENTRAL
PARK, CITY &
MANGROVE VIEW

LEVEL 10 TO 22

MANGROVE VIEW

LEVEL 9 (HORIZON)

LEVEL 2 TO 8

ALL THE DIMENSIONS ARE IN METERS. THE UNIT SHOWN IS TYPICAL, AND ACTUAL UNIT MAY VARY IN DIMENSIONS, AREAS, LAYOUT, MATERIAL SPECIFICATION, ORIENTATION, AND LOCATION. SOME OF THE UNITS MAY HAVE A MIRRORED LAYOUT OF THE ABOVE PLAN. UNIT WINDOWS, FAÇADE, BALCONY DOOR LOCATION, FIXTURES, KITCHEN CABINETS, SANITARY WARE, AND WARDROBES, INCLUDING EACH OF THEIR LOCATION AS SHOWN IN THE PLAN IS INDICATIVE AND SUBJECT TO REVISION BY THE SELLER. ALL FIXTURES, FITTINGS, GOODS, ACCESSORIES, AND FURNITURE REFLECTED/DISPLAYED IN THIS PLAN(S) ARE STRICTLY ILLUSTRATIVE AND REPRESENTATIONAL (NOT ACTUAL) IN NATURE AND ARE ONLY FOR THE PURPOSE OF ILLUSTRATING /REFLECTING ONE OF THE POSSIBLE LAYOUTS WHICH THE PURCHASER COULD ARRANGE AFTER THE UNIT IS HANDED OVER AND DO NOT FORM PART OF THE UNIT. NO FURNITURE, GOODS, ACCESSORIES ARE INCLUDED IN THE SALE, UNLESS SUCH ITEMS ARE SPECIFICALLY INCLUDED IN SCHEDULE A OF THE SPA.



TYPE

2A 2 BHK

FLOORS

4 - 22

INTERIOR

1,074 SQ.FT.

TOTAL

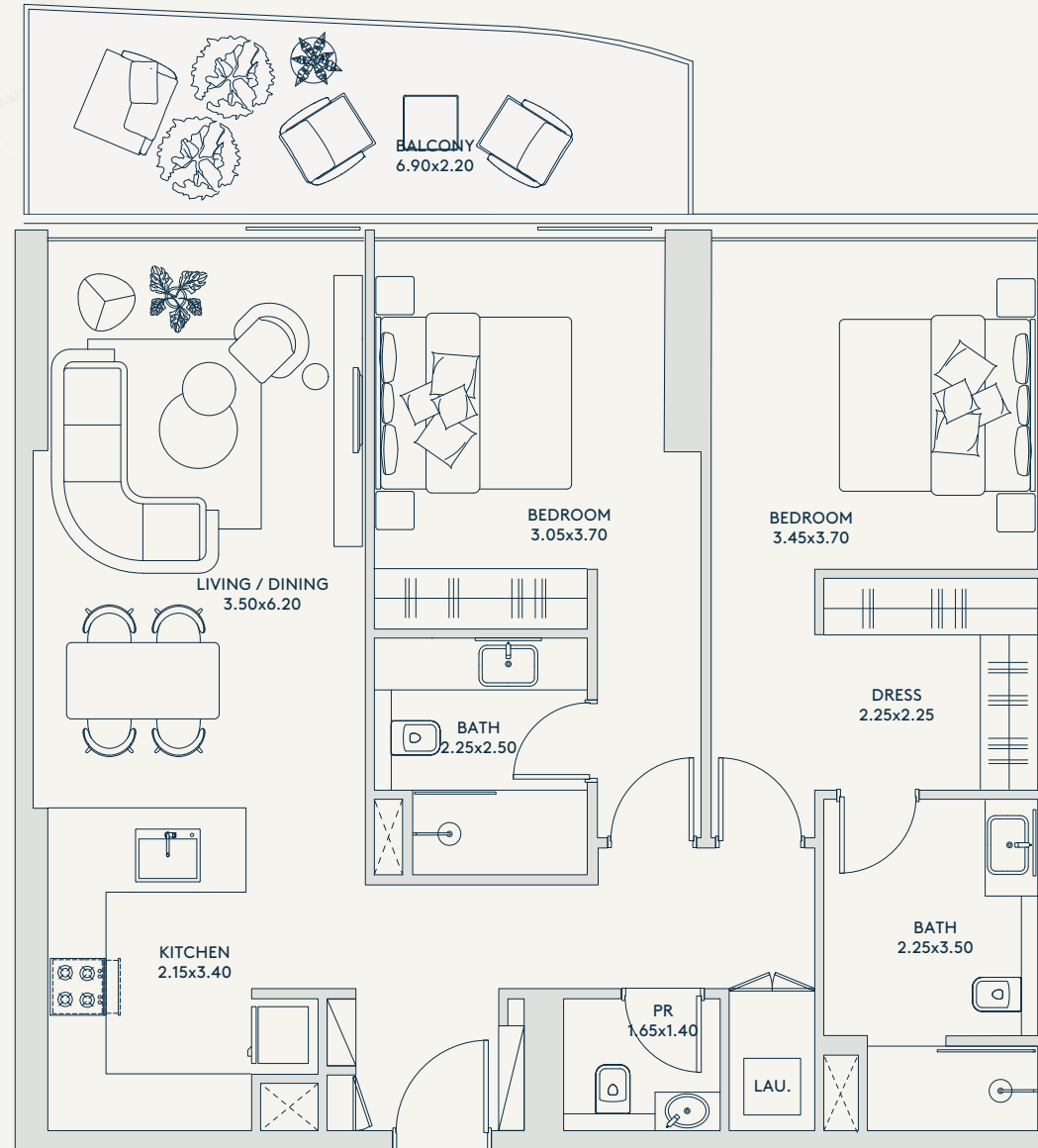
1,231 SQ.FT.

EXTERIOR

157 SQ.FT.

RIVAGE

AL REEM ISLAND



SEA & CITY VIEW

SEA/
MANGROVE
VIEW

CENTRAL
PARK, CITY &
MANGROVE VIEW

LEVEL 10 TO 22

MANGROVE VIEW

LEVEL 9 (HORIZON)

LEVEL 4 TO 8

ALL THE DIMENSIONS ARE IN METERS. THE UNIT SHOWN IS TYPICAL, AND ACTUAL UNIT MAY VARY IN DIMENSIONS, AREAS, LAYOUT, MATERIAL SPECIFICATION, ORIENTATION, AND LOCATION. SOME OF THE UNITS MAY HAVE A MIRRORED LAYOUT OF THE ABOVE PLAN. UNIT WINDOWS, FAÇADE, BALCONY DOOR LOCATION, FIXTURES, KITCHEN CABINETS, SANITARY WARE, AND WARDROBES, INCLUDING EACH OF THEIR LOCATION AS SHOWN IN THE PLAN IS INDICATIVE AND SUBJECT TO REVISION BY THE SELLER. ALL FIXTURES, FITTINGS, GOODS, ACCESSORIES, AND FURNITURE REFLECTED/DISPLAYED IN THIS PLAN(S) ARE STRICTLY ILLUSTRATIVE AND REPRESENTATIONAL (NOT ACTUAL) IN NATURE AND ARE ONLY FOR THE PURPOSE OF ILLUSTRATING /REFLECTING ONE OF THE POSSIBLE LAYOUTS WHICH THE PURCHASER COULD ARRANGE AFTER THE UNIT IS HANDED OVER AND DO NOT FORM PART OF THE UNIT. NO FURNITURE, GOODS, ACCESSORIES ARE INCLUDED IN THE SALE, UNLESS SUCH ITEMS ARE SPECIFICALLY INCLUDED IN SCHEDULE A OF THE SPA.



TYPE

2B 2 BHK

FLOORS

2 - 22

INTERIOR

1,071 SQ.FT.

TOTAL

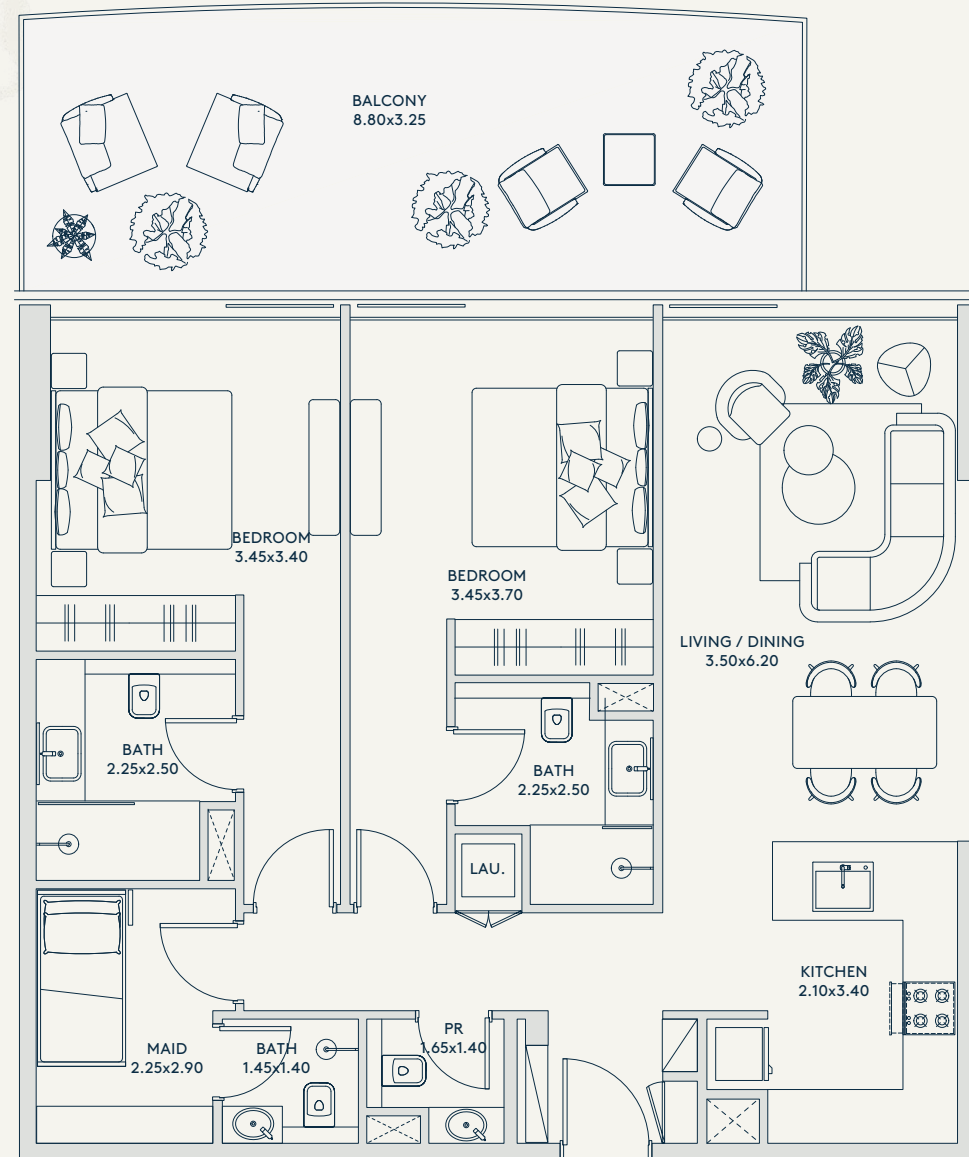
1,377 SQ.FT.

EXTERIOR

306 SQ.FT.

RIVAGE

AL REEM ISLAND



SEA & CITY VIEW

SEA/
MANGROVE
VIEW

CENTRAL
PARK, CITY &
MANGROVE VIEW

LEVEL 10 TO 22

MANGROVE VIEW

LEVEL 9 (HORIZON)

LEVEL 2 TO 8

ALL THE DIMENSIONS ARE IN METERS. THE UNIT SHOWN IS TYPICAL, AND ACTUAL UNIT MAY VARY IN DIMENSIONS, AREAS, LAYOUT, MATERIAL SPECIFICATION, ORIENTATION, AND LOCATION. SOME OF THE UNITS MAY HAVE A MIRRORED LAYOUT OF THE ABOVE PLAN. UNIT WINDOWS, FAÇADE, BALCONY DOOR LOCATION, FIXTURES, KITCHEN CABINETS, SANITARY WARE, AND WARDROBES, INCLUDING EACH OF THEIR LOCATION AS SHOWN IN THE PLAN IS INDICATIVE AND SUBJECT TO REVISION BY THE SELLER. ALL FIXTURES, FITTINGS, GOODS, ACCESSORIES, AND FURNITURE REFLECTED/DISPLAYED IN THIS PLAN(S) ARE STRICTLY ILLUSTRATIVE AND REPRESENTATIONAL (NOT ACTUAL) IN NATURE AND ARE ONLY FOR THE PURPOSE OF ILLUSTRATING /REFLECTING ONE OF THE POSSIBLE LAYOUTS WHICH THE PURCHASER COULD ARRANGE AFTER THE UNIT IS HANDED OVER AND DO NOT FORM PART OF THE UNIT. NO FURNITURE, GOODS, ACCESSORIES ARE INCLUDED IN THE SALE, UNLESS SUCH ITEMS ARE SPECIFICALLY INCLUDED IN SCHEDULE A OF THE SPA.



TYPE

3A 2 BHK

FLOORS

2 - 22

INTERIOR

1,190 SQ.FT.

TOTAL

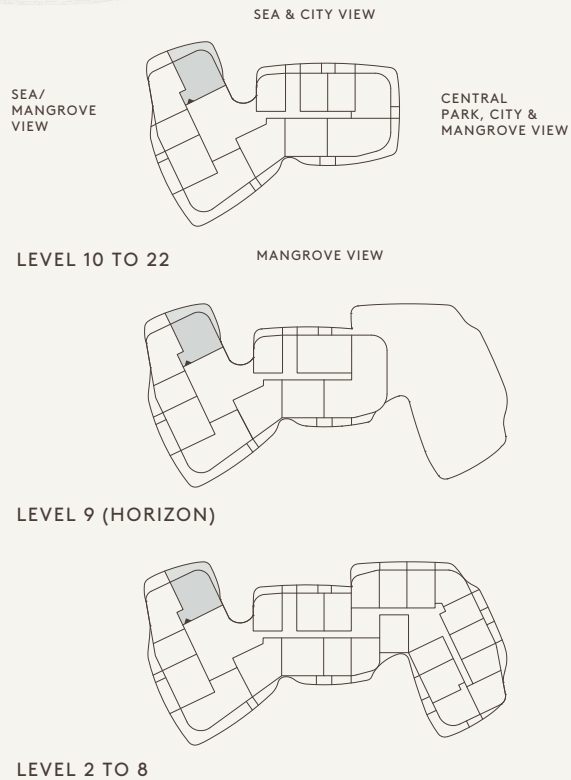
1,606 SQ.FT.

EXTERIOR

416 SQ.FT.

RIVAGE

AL REEM ISLAND



ALL THE DIMENSIONS ARE IN METERS. THE UNIT SHOWN IS TYPICAL, AND ACTUAL UNIT MAY VARY IN DIMENSIONS, AREAS, LAYOUT, MATERIAL SPECIFICATION, ORIENTATION, AND LOCATION. SOME OF THE UNITS MAY HAVE A MIRRORED LAYOUT OF THE ABOVE PLAN. UNIT WINDOWS, FAÇADE, BALCONY DOOR LOCATION, FIXTURES, KITCHEN CABINETS, SANITARY WARE, AND WARDROBES, INCLUDING EACH OF THEIR LOCATION AS SHOWN IN THE PLAN IS INDICATIVE AND SUBJECT TO REVISION BY THE SELLER. ALL FIXTURES, FITTINGS, GOODS, ACCESSORIES, AND FURNITURE REFLECTED/DISPLAYED IN THIS PLAN(S) ARE STRICTLY ILLUSTRATIVE AND REPRESENTATIONAL (NOT ACTUAL) IN NATURE AND ARE ONLY FOR THE PURPOSE OF ILLUSTRATING /REFLECTING ONE OF THE POSSIBLE LAYOUTS WHICH THE PURCHASER COULD ARRANGE AFTER THE UNIT IS HANDED OVER AND DO NOT FORM PART OF THE UNIT. NO FURNITURE, GOODS, ACCESSORIES ARE INCLUDED IN THE SALE, UNLESS SUCH ITEMS ARE SPECIFICALLY INCLUDED IN SCHEDULE A OF THE SPA.



TYPE

4A 2 BHK

FLOORS

2 - 22

INTERIOR

1,063 SQ.FT.

TOTAL

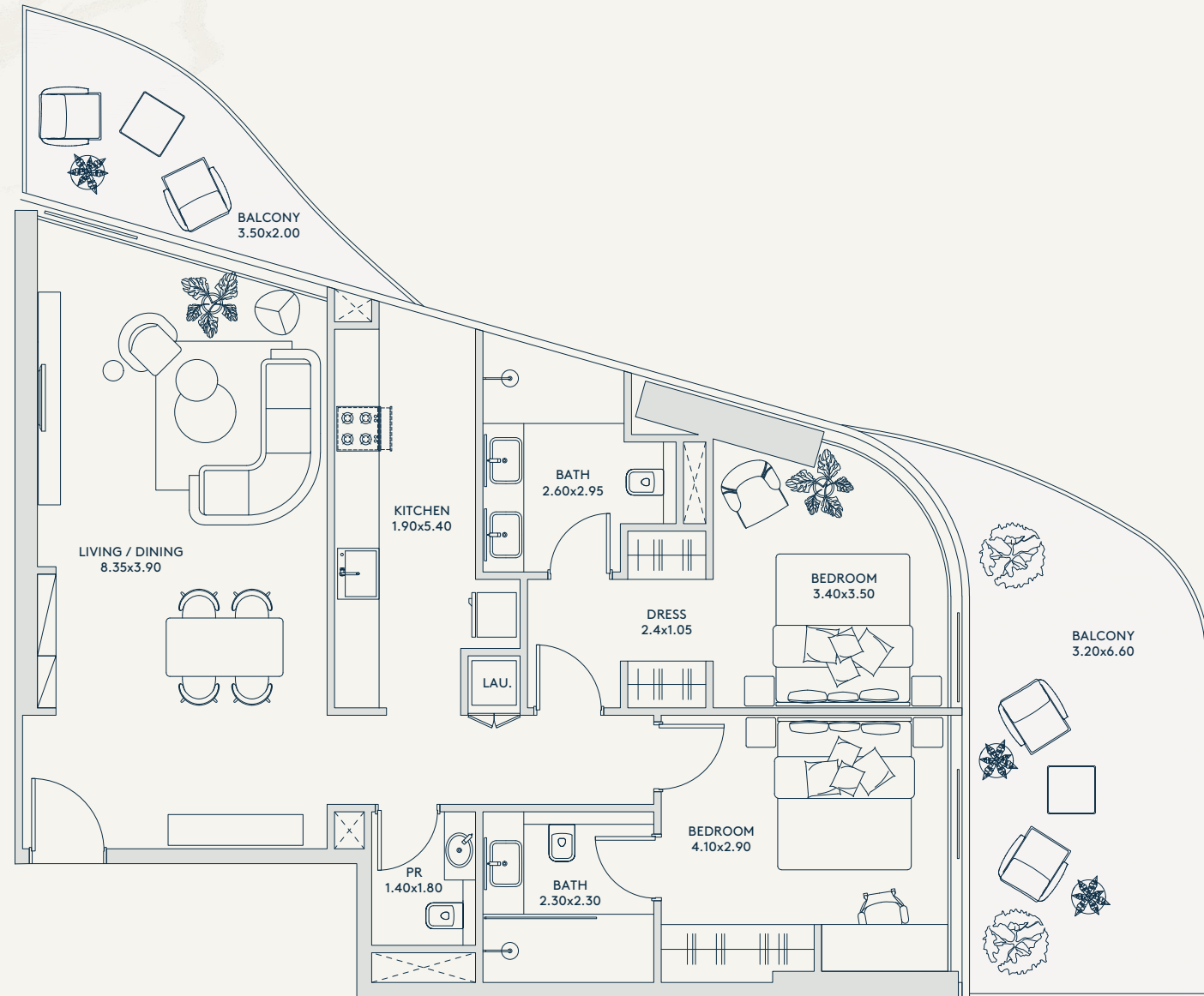
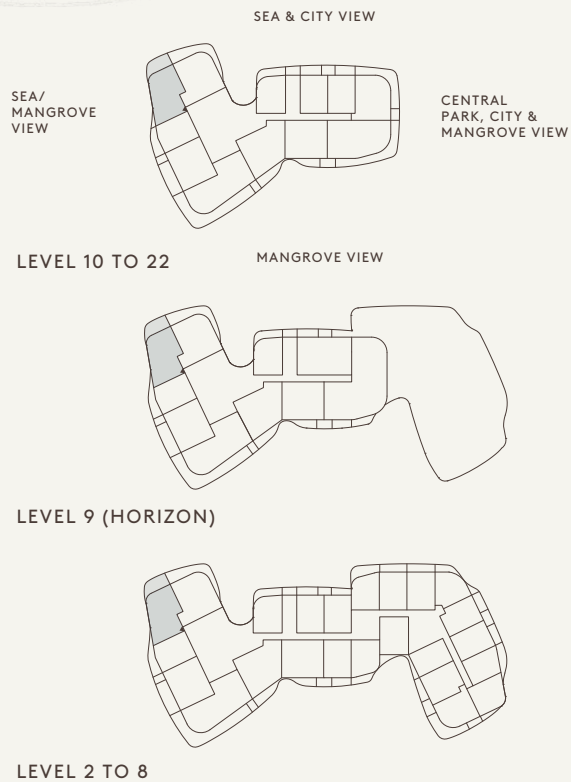
1,394 SQ.FT.

RIVAGE

AL REEM ISLAND

EXTERIOR

331 SQ.FT.



ALL THE DIMENSIONS ARE IN METERS. THE UNIT SHOWN IS TYPICAL, AND ACTUAL UNIT MAY VARY IN DIMENSIONS, AREAS, LAYOUT, MATERIAL SPECIFICATION, ORIENTATION, AND LOCATION. SOME OF THE UNITS MAY HAVE A MIRRORED LAYOUT OF THE ABOVE PLAN. UNIT WINDOWS, FAÇADE, BALCONY DOOR LOCATION, FIXTURES, KITCHEN CABINETS, SANITARY WARE, AND WARDROBES, INCLUDING EACH OF THEIR LOCATION AS SHOWN IN THE PLAN IS INDICATIVE AND SUBJECT TO REVISION BY THE SELLER. ALL FIXTURES, FITTINGS, GOODS, ACCESSORIES, AND FURNITURE REFLECTED/DISPLAYED IN THIS PLAN(S) ARE STRICTLY ILLUSTRATIVE AND REPRESENTATIONAL (NOT ACTUAL) IN NATURE AND ARE ONLY FOR THE PURPOSE OF ILLUSTRATING / REFLECTING ONE OF THE POSSIBLE LAYOUTS WHICH THE PURCHASER COULD ARRANGE AFTER THE UNIT IS HANDED OVER AND DO NOT FORM PART OF THE UNIT. NO FURNITURE, GOODS, ACCESSORIES ARE INCLUDED IN THE SALE, UNLESS SUCH ITEMS ARE SPECIFICALLY INCLUDED IN SCHEDULE A OF THE SPA.



TYPE

5A 2 BHK

FLOORS

10 - 22

INTERIOR

1,079 SQ.FT.

TOTAL

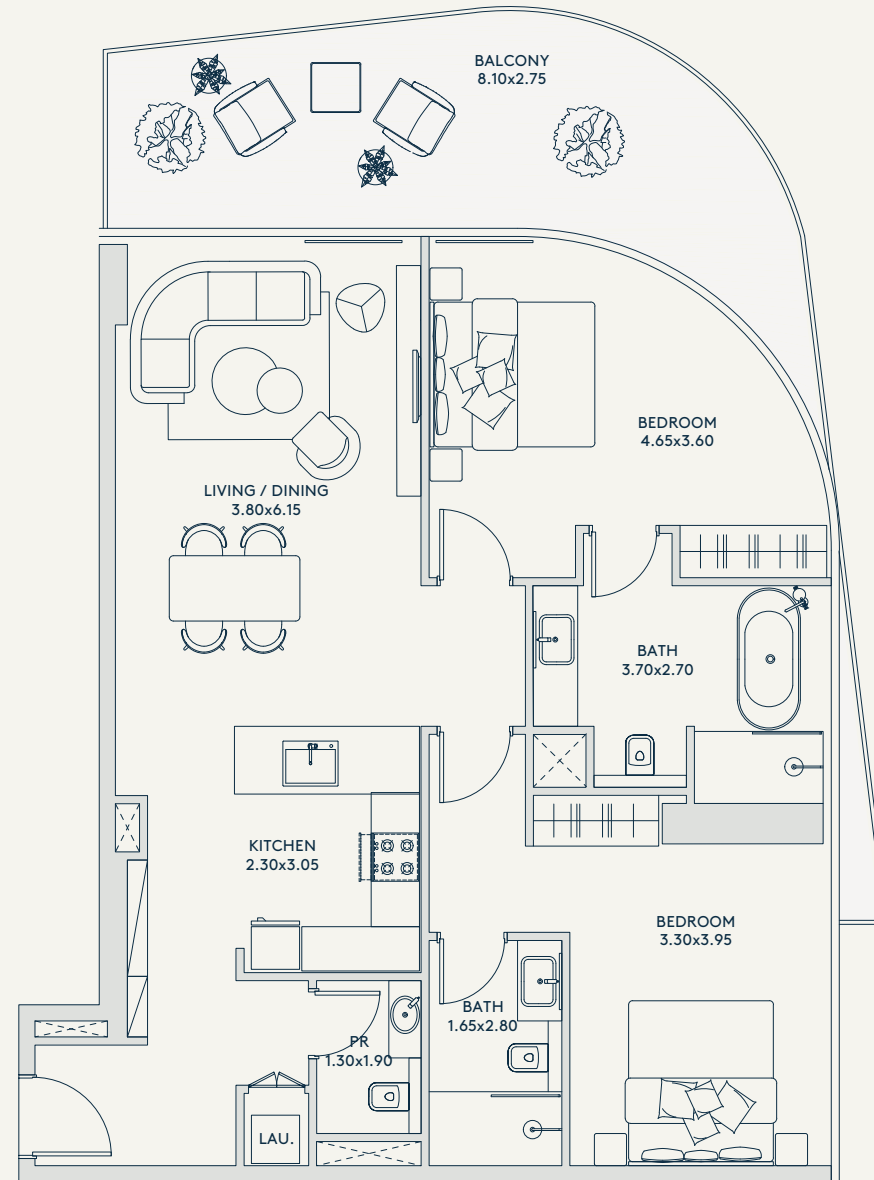
1,326 SQ.FT.

EXTERIOR

248 SQ.FT.

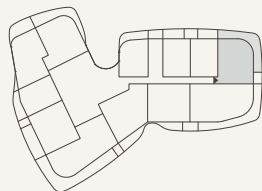
RIVAGE

AL REEM ISLAND



SEA & CITY VIEW

SEA/
MANGROVE
VIEW



CENTRAL
PARK, CITY &
MANGROVE VIEW

LEVEL 10 TO 22

MANGROVE VIEW

ALL THE DIMENSIONS ARE IN METERS. THE UNIT SHOWN IS TYPICAL, AND ACTUAL UNIT MAY VARY IN DIMENSIONS, AREAS, LAYOUT, MATERIAL SPECIFICATION, ORIENTATION, AND LOCATION. SOME OF THE UNITS MAY HAVE A MIRRORED LAYOUT OF THE ABOVE PLAN. UNIT WINDOWS, FAÇADE, BALCONY DOOR LOCATION, FIXTURES, KITCHEN CABINETS, SANITARY WARE, AND WARDROBES, INCLUDING EACH OF THEIR LOCATION AS SHOWN IN THE PLAN IS INDICATIVE AND SUBJECT TO REVISION BY THE SELLER. ALL FIXTURES, FITTINGS, GOODS, ACCESSORIES, AND FURNITURE REFLECTED/DISPLAYED IN THIS PLAN(S) ARE STRICTLY ILLUSTRATIVE AND REPRESENTATIONAL (NOT ACTUAL) IN NATURE AND ARE ONLY FOR THE PURPOSE OF ILLUSTRATING /REFLECTING ONE OF THE POSSIBLE LAYOUTS WHICH THE PURCHASER COULD ARRANGE AFTER THE UNIT IS HANDED OVER AND DO NOT FORM PART OF THE UNIT. NO FURNITURE, GOODS, ACCESSORIES ARE INCLUDED IN THE SALE, UNLESS SUCH ITEMS ARE SPECIFICALLY INCLUDED IN SCHEDULE A OF THE SPA.



2 BEDROOM DUPLEX



TYPE

1A

2 BHK
DUPLIX

FLOORS

3 - 8

INTERIOR

1,394 SQ.FT.

EXTERIOR

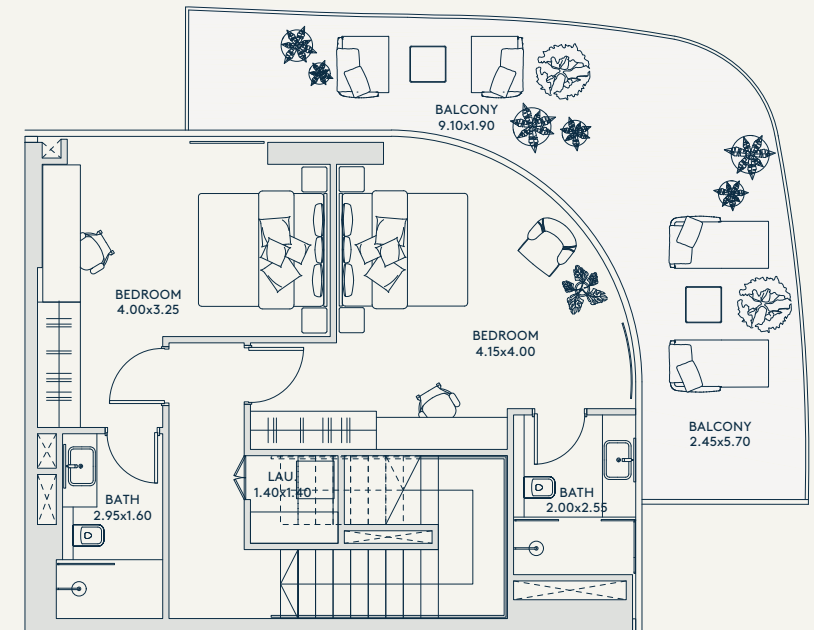
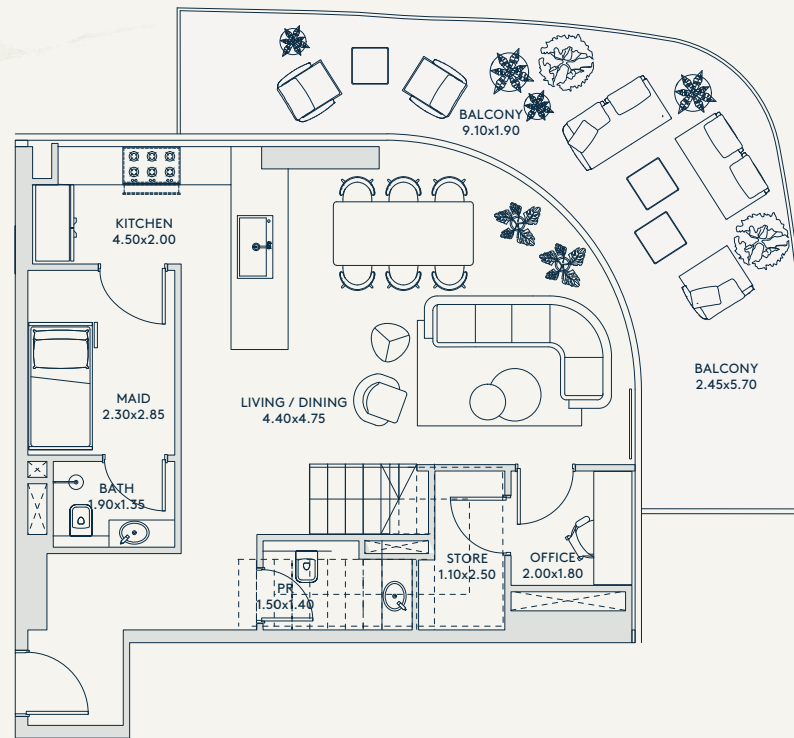
676 SQ.FT.

TOTAL

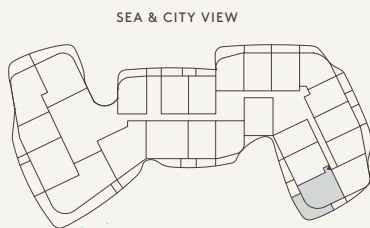
2,070 SQ.FT.

RIVAGE

AL REEM ISLAND



SEA/
MANGROVE
VIEW



LEVEL 3 TO 8

MANGROVE VIEW

CENTRAL
PARK, CITY &
MANGROVE VIEW

ALL THE DIMENSIONS ARE IN METERS. THE UNIT SHOWN IS TYPICAL, AND ACTUAL UNIT MAY VARY IN DIMENSIONS, AREAS, LAYOUT, MATERIAL SPECIFICATION, ORIENTATION, AND LOCATION. SOME OF THE UNITS MAY HAVE A MIRRORED LAYOUT OF THE ABOVE PLAN. UNIT WINDOWS, FAÇADE, BALCONY DOOR LOCATION, FIXTURES, KITCHEN CABINETS, SANITARY WARE, AND WARDROBES, INCLUDING EACH OF THEIR LOCATION AS SHOWN IN THE PLAN IS INDICATIVE AND SUBJECT TO REVISION BY THE SELLER. ALL FIXTURES, FITTINGS, GOODS, ACCESSORIES, AND FURNITURE REFLECTED/DISPLAYED IN THIS PLAN(S) ARE STRICTLY ILLUSTRATIVE AND REPRESENTATIONAL (NOT ACTUAL) IN NATURE AND ARE ONLY FOR THE PURPOSE OF ILLUSTRATING /REFLECTING ONE OF THE POSSIBLE LAYOUTS WHICH THE PURCHASER COULD ARRANGE AFTER THE UNIT IS HANDED OVER AND DO NOT FORM PART OF THE UNIT. NO FURNITURE, GOODS, ACCESSORIES ARE INCLUDED IN THE SALE, UNLESS SUCH ITEMS ARE SPECIFICALLY INCLUDED IN SCHEDULE A OF THE SPA.



TYPE

2A 2 BHK DUPLEX

FLOORS

3 - 8

INTERIOR

1,288 SQ.FT.

EXTERIOR

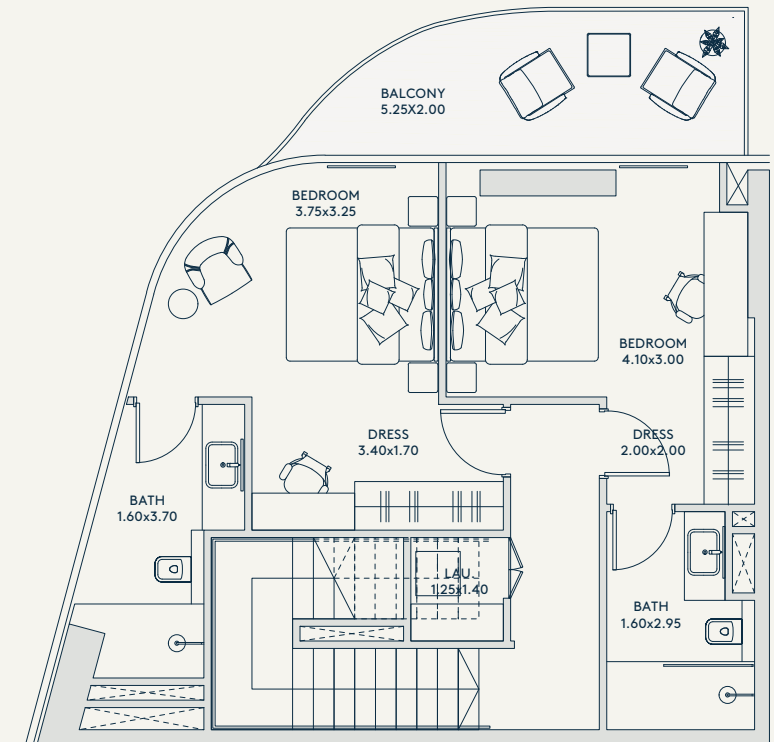
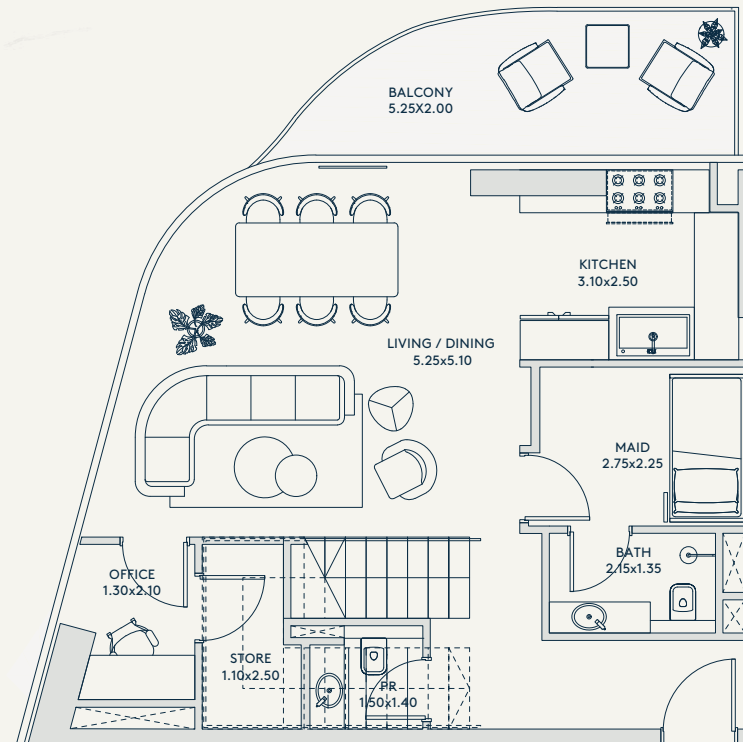
238 SQ.FT.

TOTAL

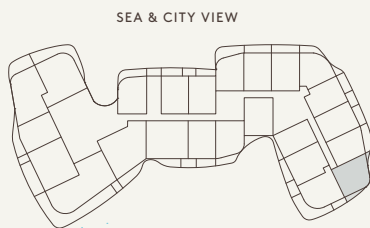
1,526 SQ.FT.

RIVAGE

AL REEM ISLAND



SEA/
MANGROVE
VIEW



LEVEL 3 TO 8

MANGROVE VIEW

CENTRAL
PARK, CITY &
MANGROVE VIEW

ALL THE DIMENSIONS ARE IN METERS. THE UNIT SHOWN IS TYPICAL, AND ACTUAL UNIT MAY VARY IN DIMENSIONS, AREAS, LAYOUT, MATERIAL SPECIFICATION, ORIENTATION, AND LOCATION. SOME OF THE UNITS MAY HAVE A MIRRORED LAYOUT OF THE ABOVE PLAN. UNIT WINDOWS, FAÇADE, BALCONY DOOR LOCATION, FIXTURES, KITCHEN CABINETS, SANITARY WARE, AND WARDROBES, INCLUDING EACH OF THEIR LOCATION AS SHOWN IN THE PLAN IS INDICATIVE AND SUBJECT TO REVISION BY THE SELLER. ALL FIXTURES, FITTINGS, GOODS, ACCESSORIES, AND FURNITURE REFLECTED/DISPLAYED IN THIS PLAN(S) ARE STRICTLY ILLUSTRATIVE AND REPRESENTATIONAL (NOT ACTUAL) IN NATURE AND ARE ONLY FOR THE PURPOSE OF ILLUSTRATING /REFLECTING ONE OF THE POSSIBLE LAYOUTS WHICH THE PURCHASER COULD ARRANGE AFTER THE UNIT IS HANDED OVER AND DO NOT FORM PART OF THE UNIT. NO FURNITURE, GOODS, ACCESSORIES ARE INCLUDED IN THE SALE, UNLESS SUCH ITEMS ARE SPECIFICALLY INCLUDED IN SCHEDULE A OF THE SPA.



TYPE

3A 2 BHK DUPLEX

FLOORS

23 - 26

INTERIOR

1,335 SQ.FT.

EXTERIOR

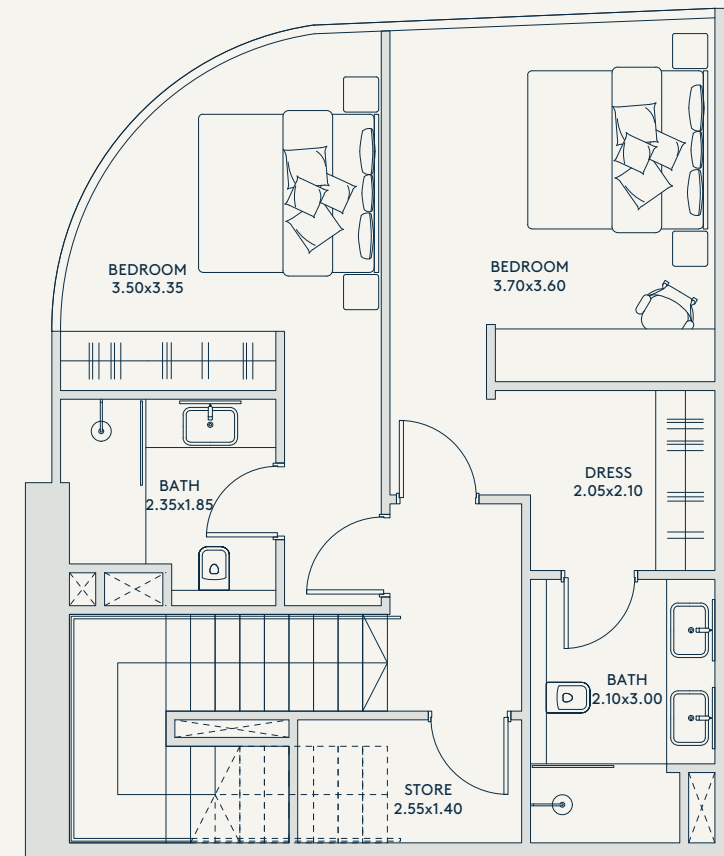
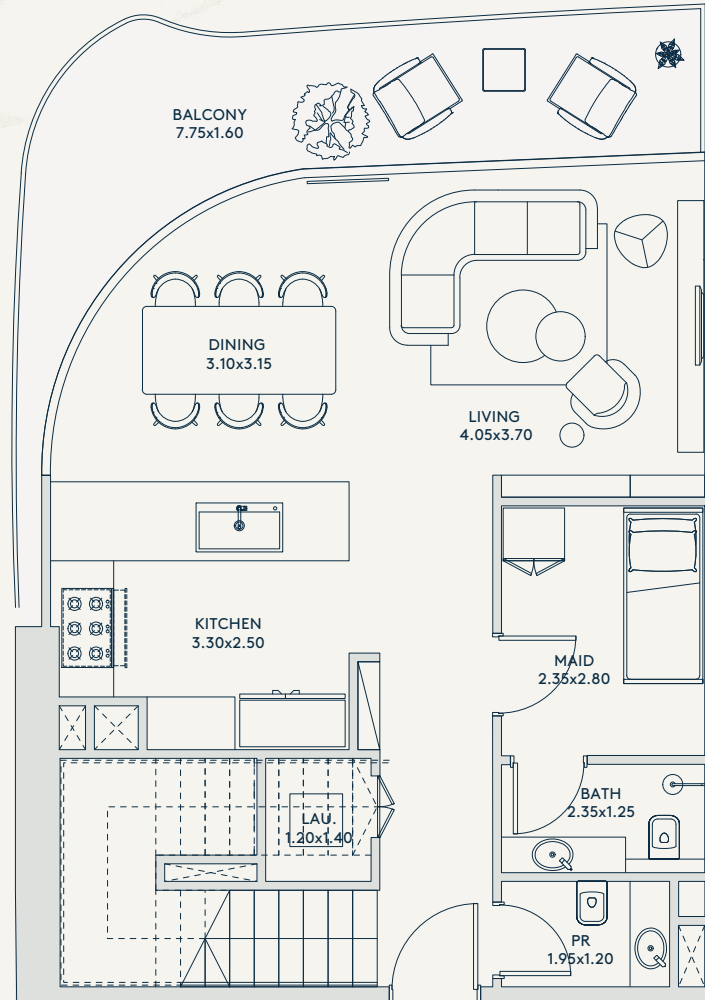
153 SQ.FT.

TOTAL

1,488 SQ.FT.

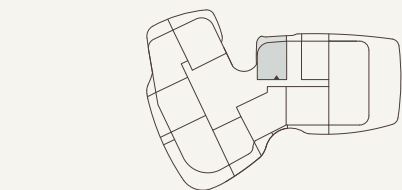
RIVAGE

AL REEM ISLAND



LEVEL 24 and 26

MANGROVE VIEW



LEVEL 23 and 25

ALL THE DIMENSIONS ARE IN METERS. THE UNIT SHOWN IS TYPICAL, AND ACTUAL UNIT MAY VARY IN DIMENSIONS, AREAS, LAYOUT, MATERIAL SPECIFICATION, ORIENTATION, AND LOCATION. SOME OF THE UNITS MAY HAVE A MIRRORED LAYOUT OF THE ABOVE PLAN. UNIT WINDOWS, FAÇADE, BALCONY DOOR LOCATION, FIXTURES, KITCHEN CABINETS, SANITARY WARE, AND WARDROBES, INCLUDING EACH OF THEIR LOCATION AS SHOWN IN THE PLAN IS INDICATIVE AND SUBJECT TO REVISION BY THE SELLER. ALL FIXTURES, FITTINGS, GOODS, ACCESSORIES, AND FURNITURE REFLECTED/DISPLAYED IN THIS PLAN(S) ARE STRICTLY ILLUSTRATIVE AND REPRESENTATIONAL (NOT ACTUAL) IN NATURE AND ARE ONLY FOR THE PURPOSE OF ILLUSTRATING /REFLECTING ONE OF THE POSSIBLE LAYOUTS WHICH THE PURCHASER COULD ARRANGE AFTER THE UNIT IS HANDED OVER AND DO NOT FORM PART OF THE UNIT. NO FURNITURE, GOODS, ACCESSORIES ARE INCLUDED IN THE SALE, UNLESS SUCH ITEMS ARE SPECIFICALLY INCLUDED IN SCHEDULE A OF THE SPA.



TYPE

4A 2 BHK DUPLEX

FLOORS

23-26

INTERIOR

1,324 SQ.FT.

TOTAL

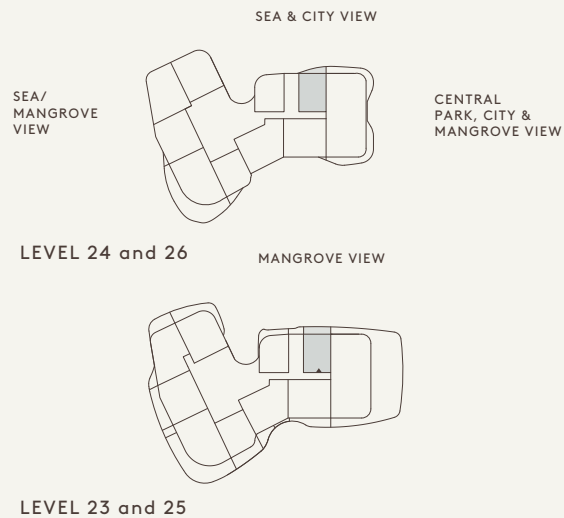
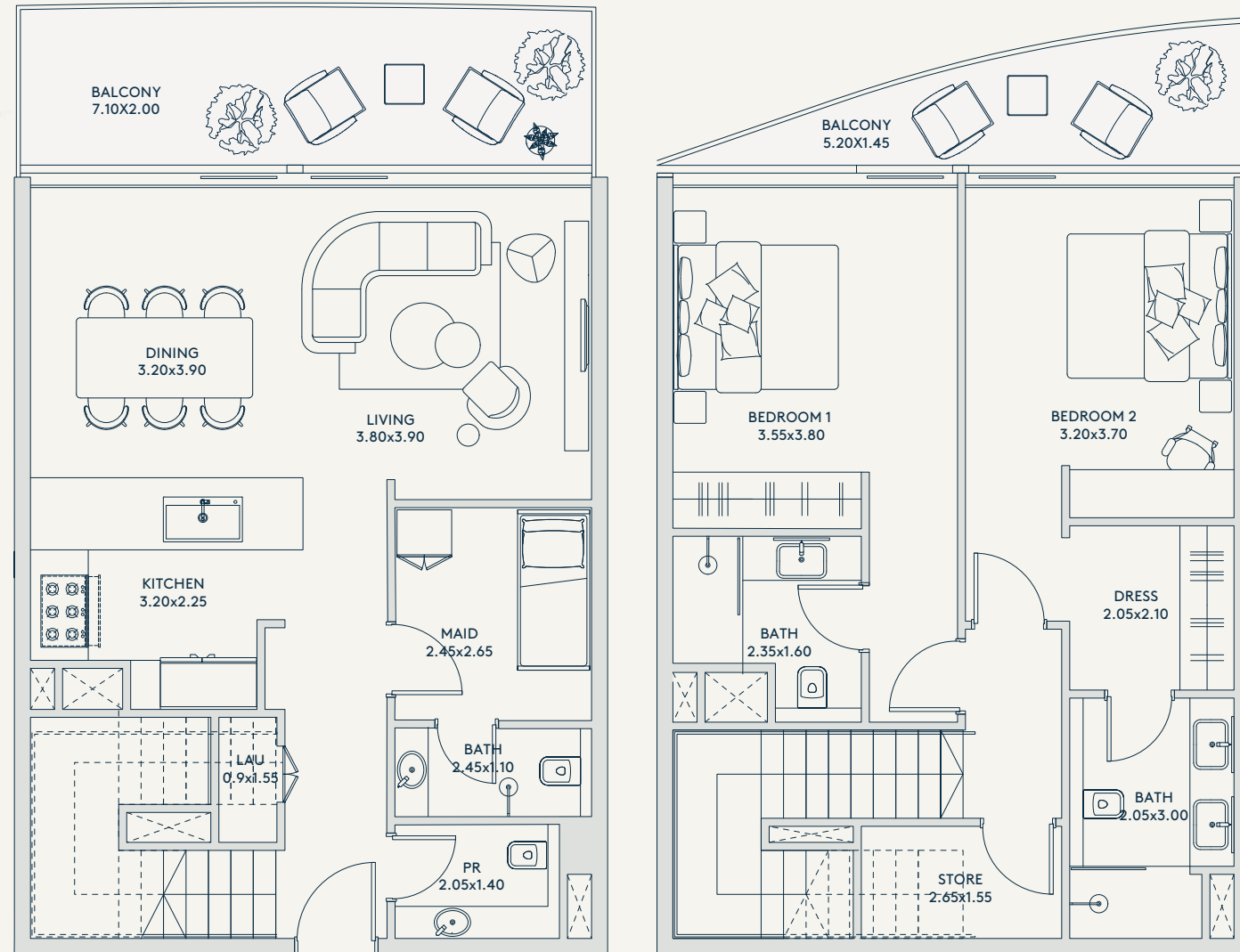
1,579 SQ.FT.

EXTERIOR

255 SQ.FT.

RIVAGE

AL REEM ISLAND



ALL THE DIMENSIONS ARE IN METERS. THE UNIT SHOWN IS TYPICAL, AND ACTUAL UNIT MAY VARY IN DIMENSIONS, AREAS, LAYOUT, MATERIAL SPECIFICATION, ORIENTATION, AND LOCATION. SOME OF THE UNITS MAY HAVE A MIRRORED LAYOUT OF THE ABOVE PLAN. UNIT WINDOWS, FAÇADE, BALCONY DOOR LOCATION, FIXTURES, KITCHEN CABINETS, SANITARY WARE, AND WARDROBES, INCLUDING EACH OF THEIR LOCATION AS SHOWN IN THE PLAN IS INDICATIVE AND SUBJECT TO REVISION BY THE SELLER. ALL FIXTURES, FITTINGS, GOODS, ACCESSORIES, AND FURNITURE REFLECTED/DISPLAYED IN THIS PLAN(S) ARE STRICTLY ILLUSTRATIVE AND REPRESENTATIONAL (NOT ACTUAL) IN NATURE AND ARE ONLY FOR THE PURPOSE OF ILLUSTRATING /REFLECTING ONE OF THE POSSIBLE LAYOUTS WHICH THE PURCHASER COULD ARRANGE AFTER THE UNIT IS HANDED OVER AND DO NOT FORM PART OF THE UNIT. NO FURNITURE, GOODS, ACCESSORIES ARE INCLUDED IN THE SALE, UNLESS SUCH ITEMS ARE SPECIFICALLY INCLUDED IN SCHEDULE A OF THE SPA.



TYPE

5A 2 BHK DUPLEX

FLOORS

23 - 24

INTERIOR

1,467 SQ.FT.

TOTAL

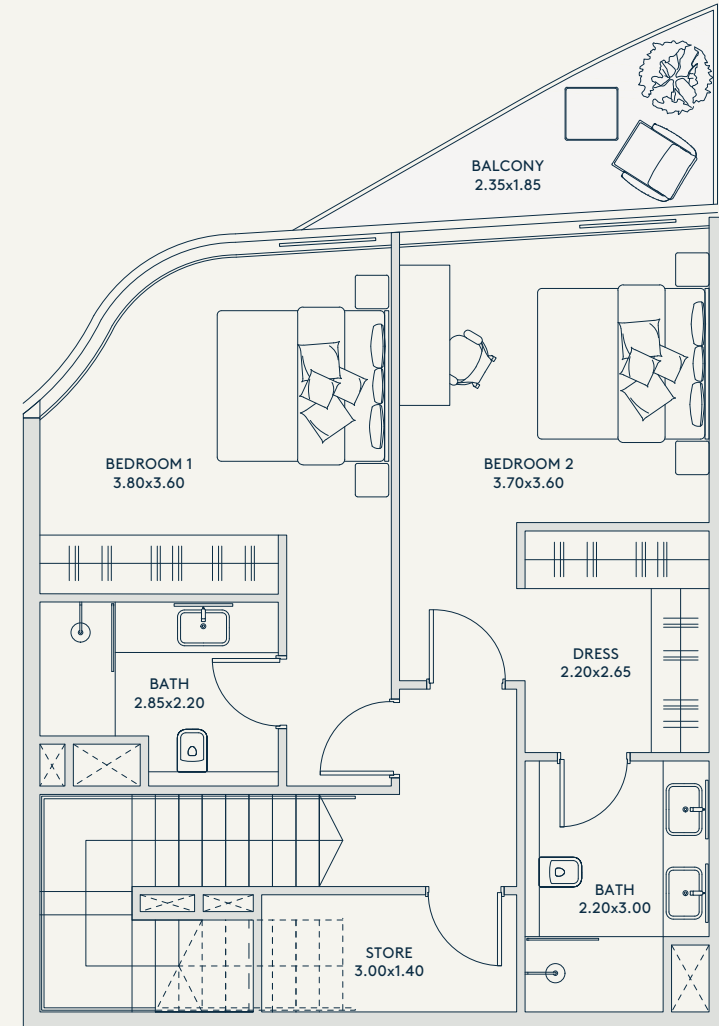
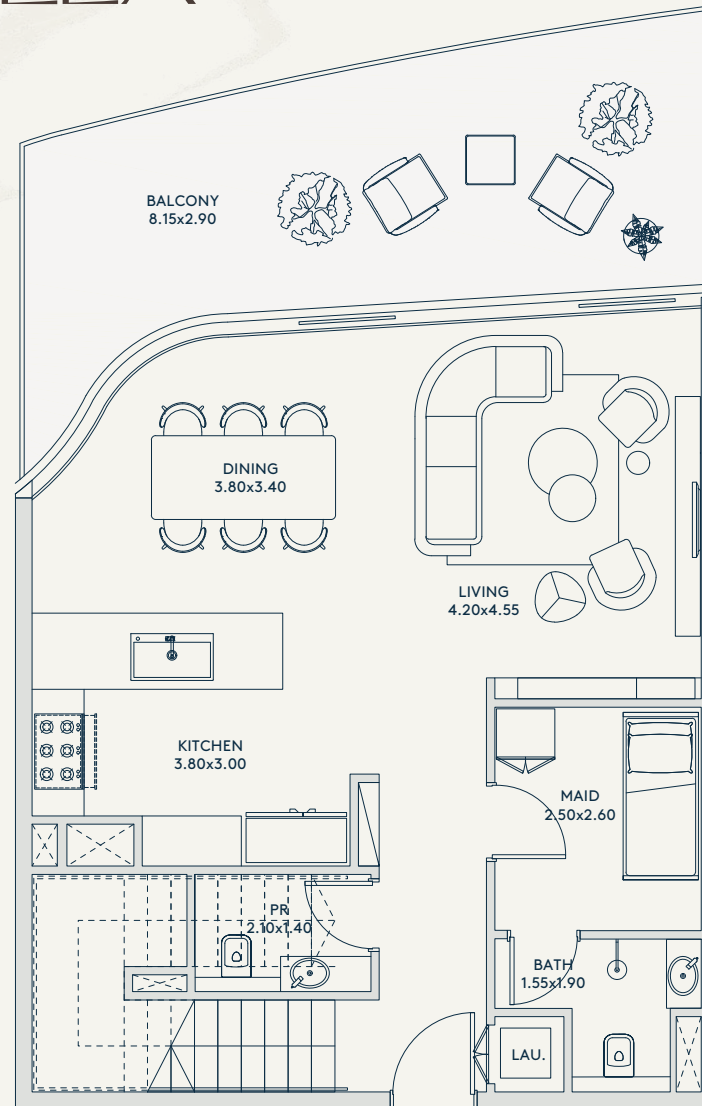
1,813 SQ.FT.

RIVAGE

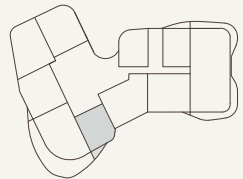
AL REEM ISLAND

EXTERIOR

346 SQ.FT.



SEA/
MANGROVE
VIEW

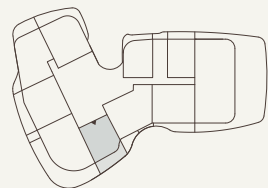


LEVEL 24

SEA & CITY VIEW

CENTRAL
PARK, CITY &
MANGROVE VIEW

MANGROVE VIEW



LEVEL 23

ALL THE DIMENSIONS ARE IN METERS. THE UNIT SHOWN IS TYPICAL, AND ACTUAL UNIT MAY VARY IN DIMENSIONS, AREAS, LAYOUT, MATERIAL SPECIFICATION, ORIENTATION, AND LOCATION. SOME OF THE UNITS MAY HAVE A MIRRORED LAYOUT OF THE ABOVE PLAN. UNIT WINDOWS, FAÇADE, BALCONY DOOR LOCATION, FIXTURES, KITCHEN CABINETS, SANITARY WARE, AND WARDROBES, INCLUDING EACH OF THEIR LOCATION AS SHOWN IN THE PLAN IS INDICATIVE AND SUBJECT TO REVISION BY THE SELLER. ALL FIXTURES, FITTINGS, GOODS, ACCESSORIES, AND FURNITURE REFLECTED/DISPLAYED IN THIS PLAN(S) ARE STRICTLY ILLUSTRATIVE AND REPRESENTATIONAL (NOT ACTUAL) IN NATURE AND ARE ONLY FOR THE PURPOSE OF ILLUSTRATING /REFLECTING ONE OF THE POSSIBLE LAYOUTS WHICH THE PURCHASER COULD ARRANGE AFTER THE UNIT IS HANDED OVER AND DO NOT FORM PART OF THE UNIT. NO FURNITURE, GOODS, ACCESSORIES ARE INCLUDED IN THE SALE, UNLESS SUCH ITEMS ARE SPECIFICALLY INCLUDED IN SCHEDULE A OF THE SPA.



3 BEDROOM

8

TYPE

1A 3 BHK

FLOORS

2 - 22

INTERIOR

1,524 SQ.FT.

EXTERIOR

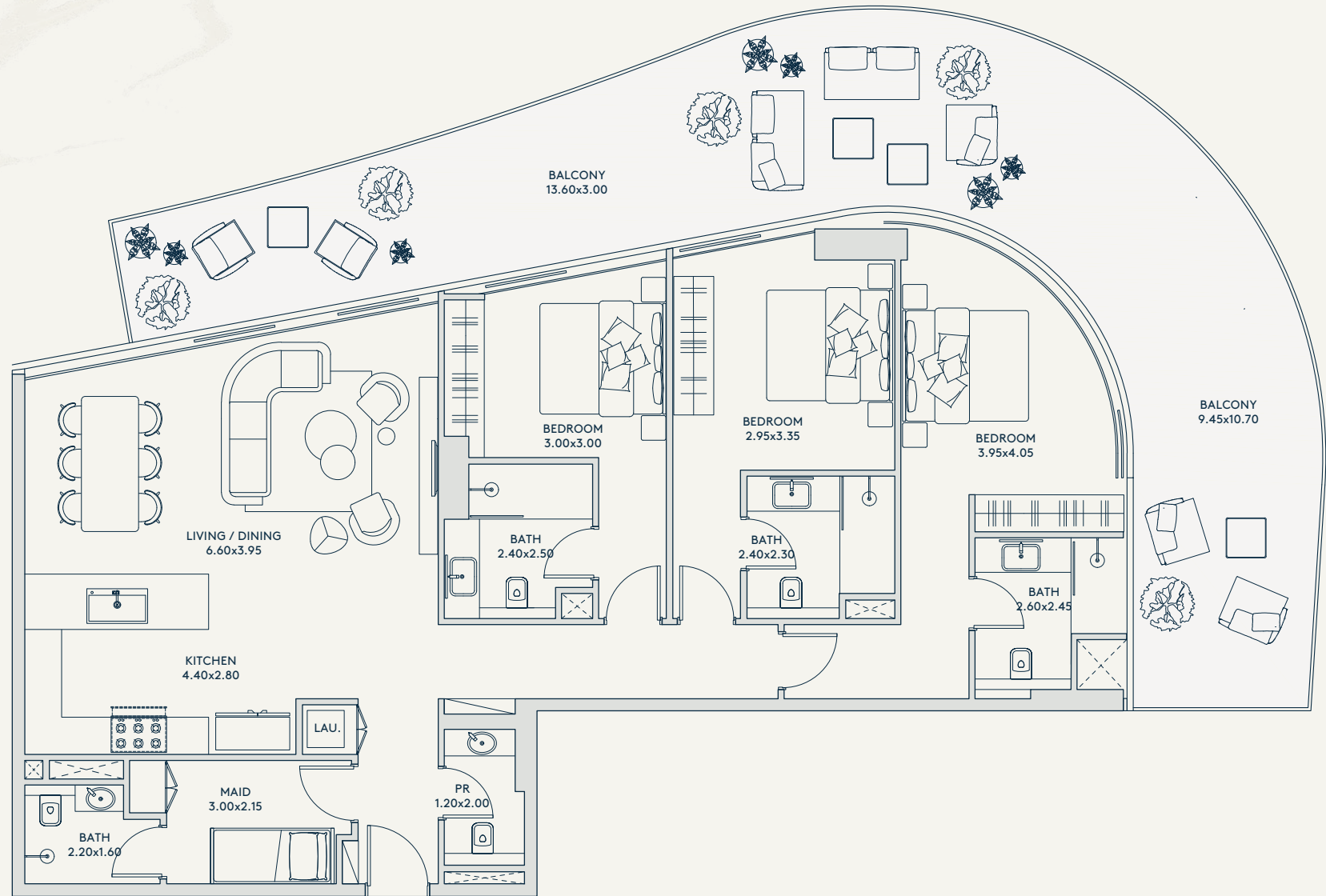
755 SQ.FT.

TOTAL

2,279 SQ.FT.

RIVAGE

AL REEM ISLAND



SEA & CITY VIEW

SEA/
MANGROVE
VIEW

CENTRAL
PARK, CITY &
MANGROVE VIEW

LEVEL 10 TO 22

MANGROVE VIEW

LEVEL 9 (HORIZON)

LEVEL 2 TO 8

ALL THE DIMENSIONS ARE IN METERS. THE UNIT SHOWN IS TYPICAL, AND ACTUAL UNIT MAY VARY IN DIMENSIONS, AREAS, LAYOUT, MATERIAL SPECIFICATION, ORIENTATION, AND LOCATION. SOME OF THE UNITS MAY HAVE A MIRRORED LAYOUT OF THE ABOVE PLAN. UNIT WINDOWS, FAÇADE, BALCONY DOOR LOCATION, FIXTURES, KITCHEN CABINETS, SANITARY WARE, AND WARDROBES, INCLUDING EACH OF THEIR LOCATION AS SHOWN IN THE PLAN IS INDICATIVE AND SUBJECT TO REVISION BY THE SELLER. ALL FIXTURES, FITTINGS, GOODS, ACCESSORIES, AND FURNITURE REFLECTED/DISPLAYED IN THIS PLAN(S) ARE STRICTLY ILLUSTRATIVE AND REPRESENTATIONAL (NOT ACTUAL) IN NATURE AND ARE ONLY FOR THE PURPOSE OF ILLUSTRATING /REFLECTING ONE OF THE POSSIBLE LAYOUTS WHICH THE PURCHASER COULD ARRANGE AFTER THE UNIT IS HANDED OVER AND DO NOT FORM PART OF THE UNIT. NO FURNITURE, GOODS, ACCESSORIES ARE INCLUDED IN THE SALE, UNLESS SUCH ITEMS ARE SPECIFICALLY INCLUDED IN SCHEDULE A OF THE SPA.



TYPE

2A 3 BHK

FLOORS

10 - 22

INTERIOR

1,508 SQ.FT.

TOTAL

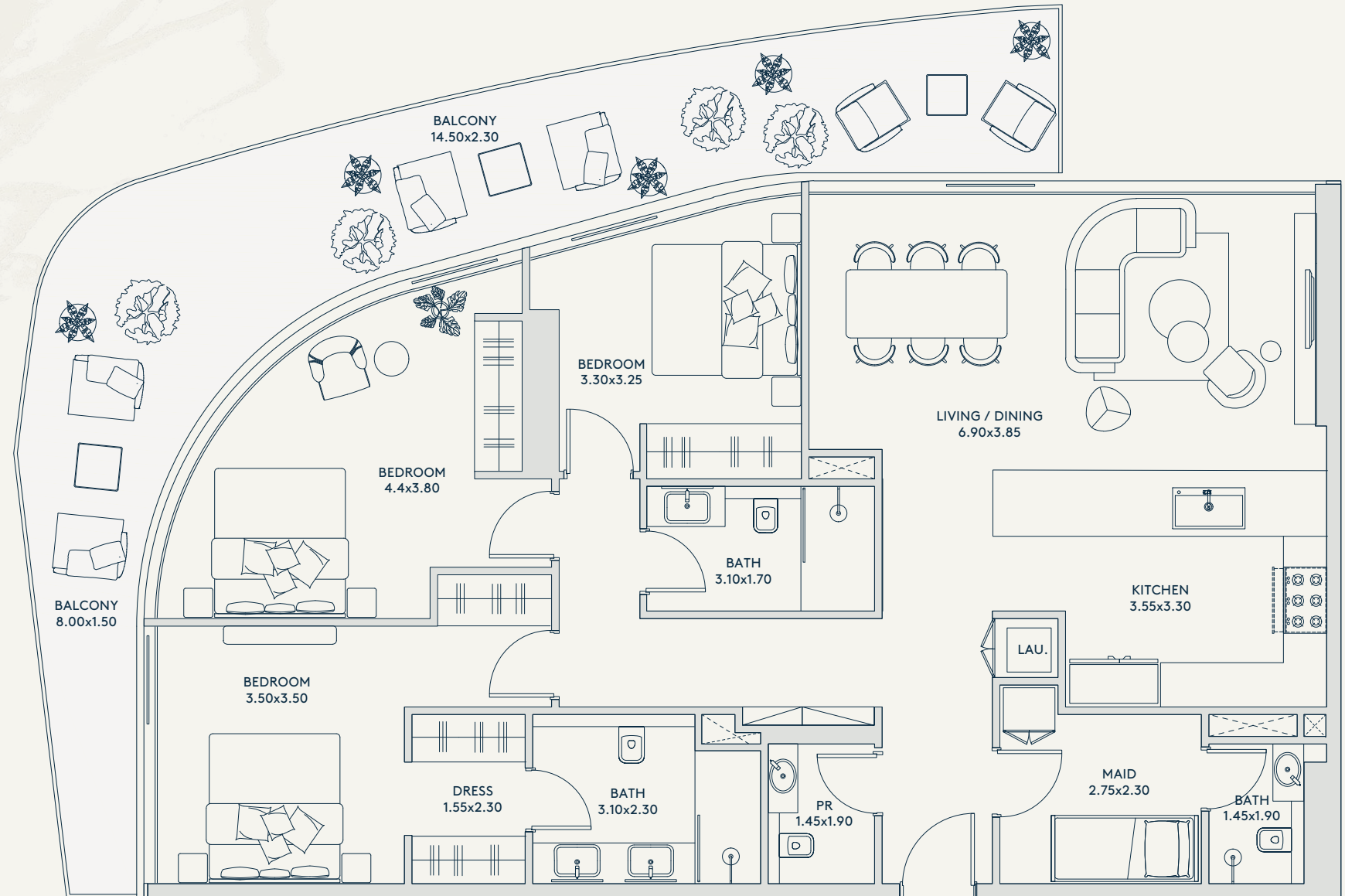
1,985 SQ.FT.

RIVAGE

AL REEM ISLAND

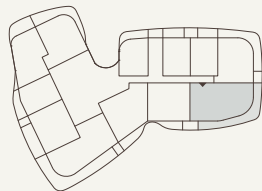
EXTERIOR

477 SQ.FT.



SEA & CITY VIEW

SEA/
MANGROVE
VIEW



CENTRAL
PARK, CITY &
MANGROVE VIEW

LEVEL 10 TO 22

MANGROVE VIEW

ALL THE DIMENSIONS ARE IN METERS. THE UNIT SHOWN IS TYPICAL, AND ACTUAL UNIT MAY VARY IN DIMENSIONS, AREAS, LAYOUT, MATERIAL SPECIFICATION, ORIENTATION, AND LOCATION. SOME OF THE UNITS MAY HAVE A MIRRORED LAYOUT OF THE ABOVE PLAN. UNIT WINDOWS, FAÇADE, BALCONY DOOR LOCATION, FIXTURES, KITCHEN CABINETS, SANITARY WARE, AND WARDROBES, INCLUDING EACH OF THEIR LOCATION AS SHOWN IN THE PLAN IS INDICATIVE AND SUBJECT TO REVISION BY THE SELLER. ALL FIXTURES, FITTINGS, GOODS, ACCESSORIES, AND FURNITURE REFLECTED/DISPLAYED IN THIS PLAN(S) ARE STRICTLY ILLUSTRATIVE AND REPRESENTATIONAL (NOT ACTUAL) IN NATURE AND ARE ONLY FOR THE PURPOSE OF ILLUSTRATING /REFLECTING ONE OF THE POSSIBLE LAYOUTS WHICH THE PURCHASER COULD ARRANGE AFTER THE UNIT IS HANDED OVER AND DO NOT FORM PART OF THE UNIT. NO FURNITURE, GOODS, ACCESSORIES ARE INCLUDED IN THE SALE, UNLESS SUCH ITEMS ARE SPECIFICALLY INCLUDED IN SCHEDULE A OF THE SPA.



3 BEDROOM DUPLEX



TYPE

1A

3 BHK DUPLEX

FLOORS

23 - 26

INTERIOR

2,250 SQ.FT.

EXTERIOR

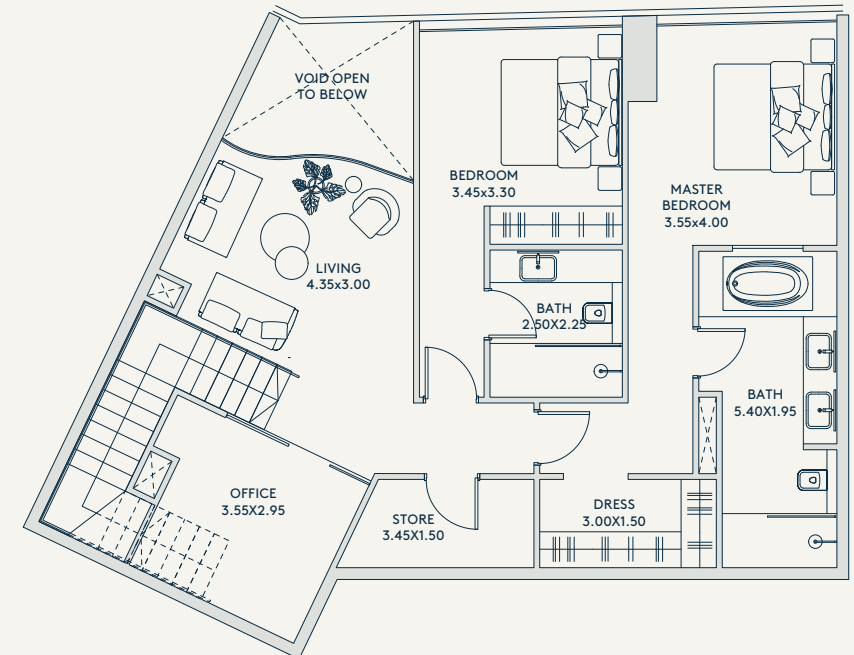
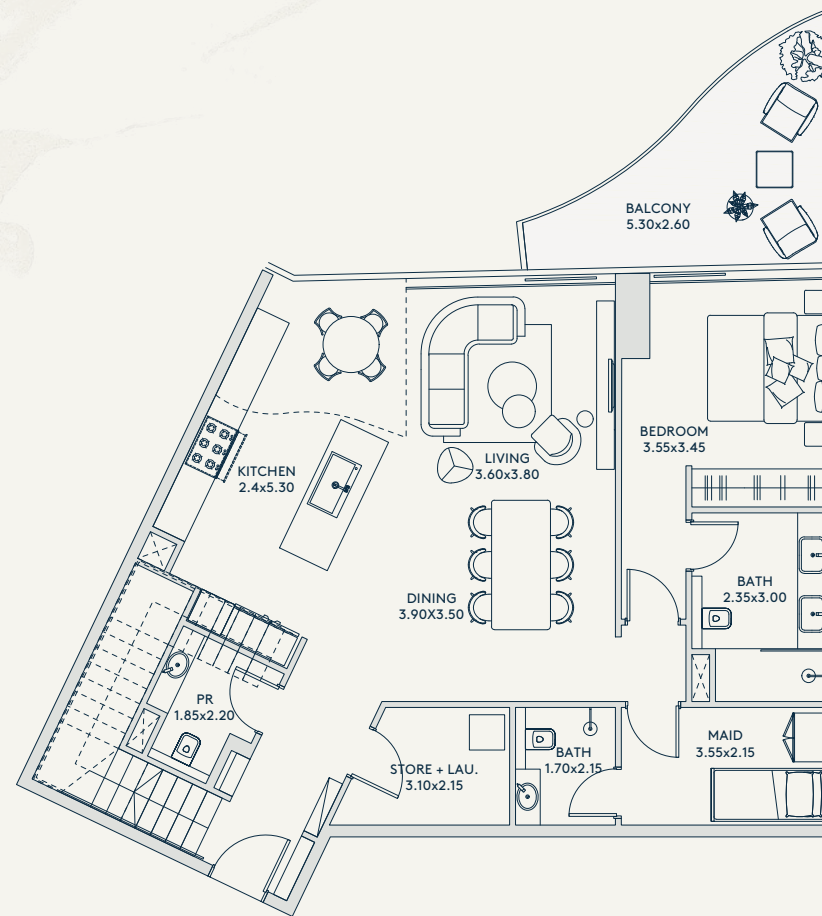
153 SQ.FT.

TOTAL

2,403 SQ.FT.

RIVAGE

AL REEM ISLAND



ALL THE DIMENSIONS ARE IN METERS. THE UNIT SHOWN IS TYPICAL, AND ACTUAL UNIT MAY VARY IN DIMENSIONS, AREAS, LAYOUT, MATERIAL SPECIFICATION, ORIENTATION, AND LOCATION. SOME OF THE UNITS MAY HAVE A MIRRORED LAYOUT OF THE ABOVE PLAN. UNIT WINDOWS, FAÇADE, BALCONY DOOR LOCATION, FIXTURES, KITCHEN CABINETS, SANITARY WARE, AND WARDROBES, INCLUDING EACH OF THEIR LOCATION AS SHOWN IN THE PLAN IS INDICATIVE AND SUBJECT TO REVISION BY THE SELLER. ALL FIXTURES, FITTINGS, GOODS, ACCESSORIES, AND FURNITURE REFLECTED/DISPLAYED IN THIS PLAN(S) ARE STRICTLY ILLUSTRATIVE AND REPRESENTATIONAL (NOT ACTUAL) IN NATURE AND ARE ONLY FOR THE PURPOSE OF ILLUSTRATING / REFLECTING ONE OF THE POSSIBLE LAYOUTS WHICH THE PURCHASER COULD ARRANGE AFTER THE UNIT IS HANDED OVER AND DO NOT FORM PART OF THE UNIT. NO FURNITURE, GOODS, ACCESSORIES ARE INCLUDED IN THE SALE, UNLESS SUCH ITEMS ARE SPECIFICALLY INCLUDED IN SCHEDULE A OF THE SPA.



TYPE

2A 3 BHK DUPLEX

FLOORS

23 - 26

INTERIOR

1,944 SQ.FT.

EXTERIOR

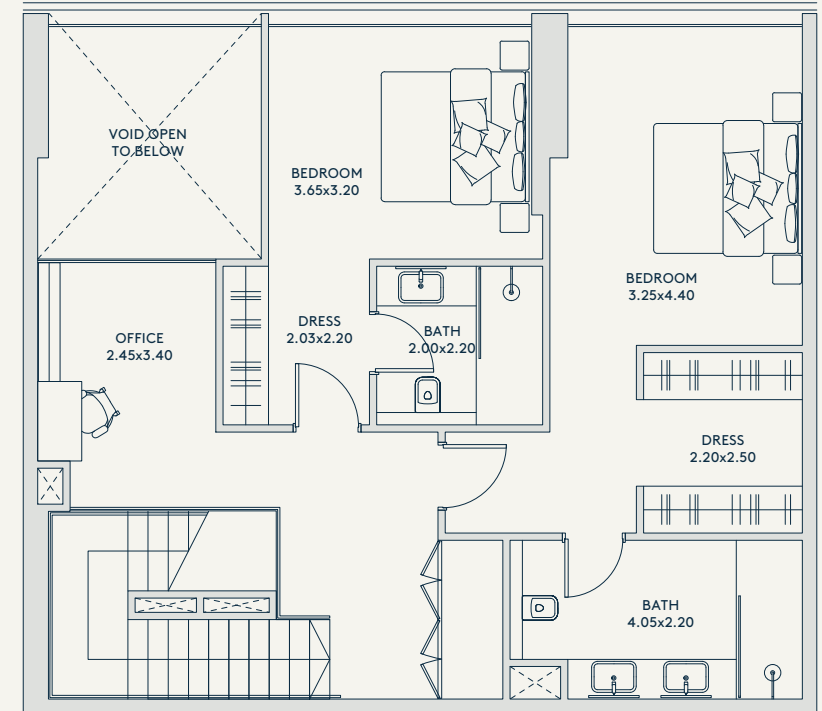
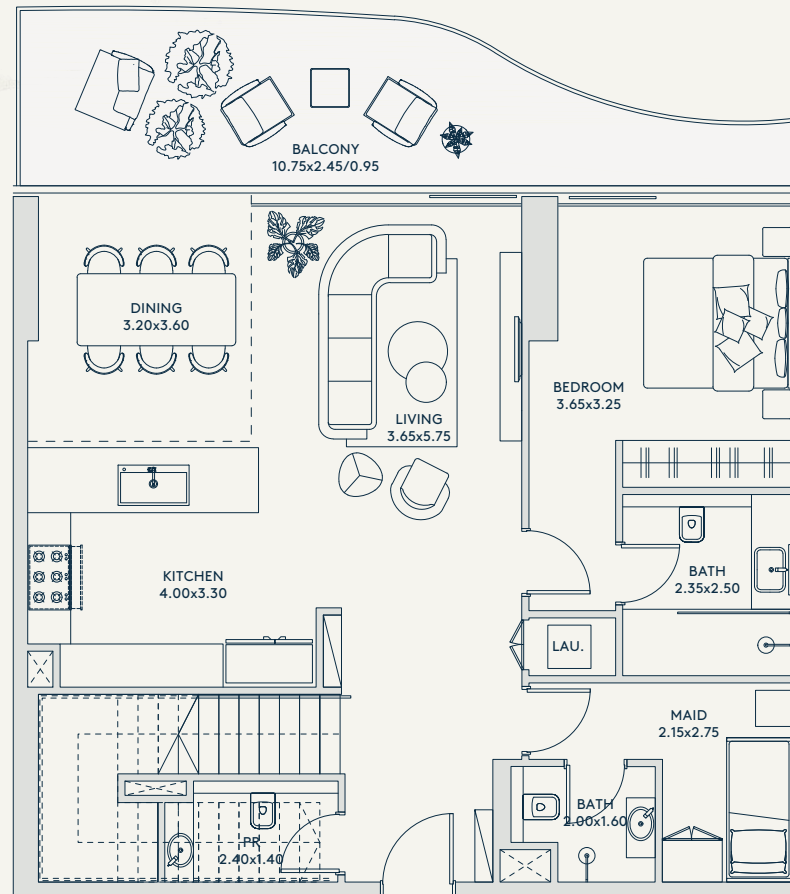
204 SQ.FT.

TOTAL

2,148 SQ.FT.

RIVAGE

AL REEM ISLAND



SEA & CITY VIEW

SEA/
MANGROVE
VIEW

CENTRAL
PARK, CITY &
MANGROVE VIEW

LEVEL 24 and 26

MANGROVE VIEW

LEVEL 23 and 25

ALL THE DIMENSIONS ARE IN METERS. THE UNIT SHOWN IS TYPICAL, AND ACTUAL UNIT MAY VARY IN DIMENSIONS, AREAS, LAYOUT, MATERIAL SPECIFICATION, ORIENTATION, AND LOCATION. SOME OF THE UNITS MAY HAVE A MIRRORED LAYOUT OF THE ABOVE PLAN. UNIT WINDOWS, FAÇADE, BALCONY DOOR LOCATION, FIXTURES, KITCHEN CABINETS, SANITARY WARE, AND WARDROBES, INCLUDING EACH OF THEIR LOCATION AS SHOWN IN THE PLAN IS INDICATIVE AND SUBJECT TO REVISION BY THE SELLER. ALL FIXTURES, FITTINGS, GOODS, ACCESSORIES, AND FURNITURE REFLECTED/DISPLAYED IN THIS PLAN(S) ARE STRICTLY ILLUSTRATIVE AND REPRESENTATIONAL (NOT ACTUAL) IN NATURE AND ARE ONLY FOR THE PURPOSE OF ILLUSTRATING / REFLECTING ONE OF THE POSSIBLE LAYOUTS WHICH THE PURCHASER COULD ARRANGE AFTER THE UNIT IS HANDED OVER AND DO NOT FORM PART OF THE UNIT. NO FURNITURE, GOODS, ACCESSORIES ARE INCLUDED IN THE SALE, UNLESS SUCH ITEMS ARE SPECIFICALLY INCLUDED IN SCHEDULE A OF THE SPA.



TYPE

3A 3 BHK DUPLEX

FLOORS

25 - 26

INTERIOR

2,063 SQ.FT.

EXTERIOR

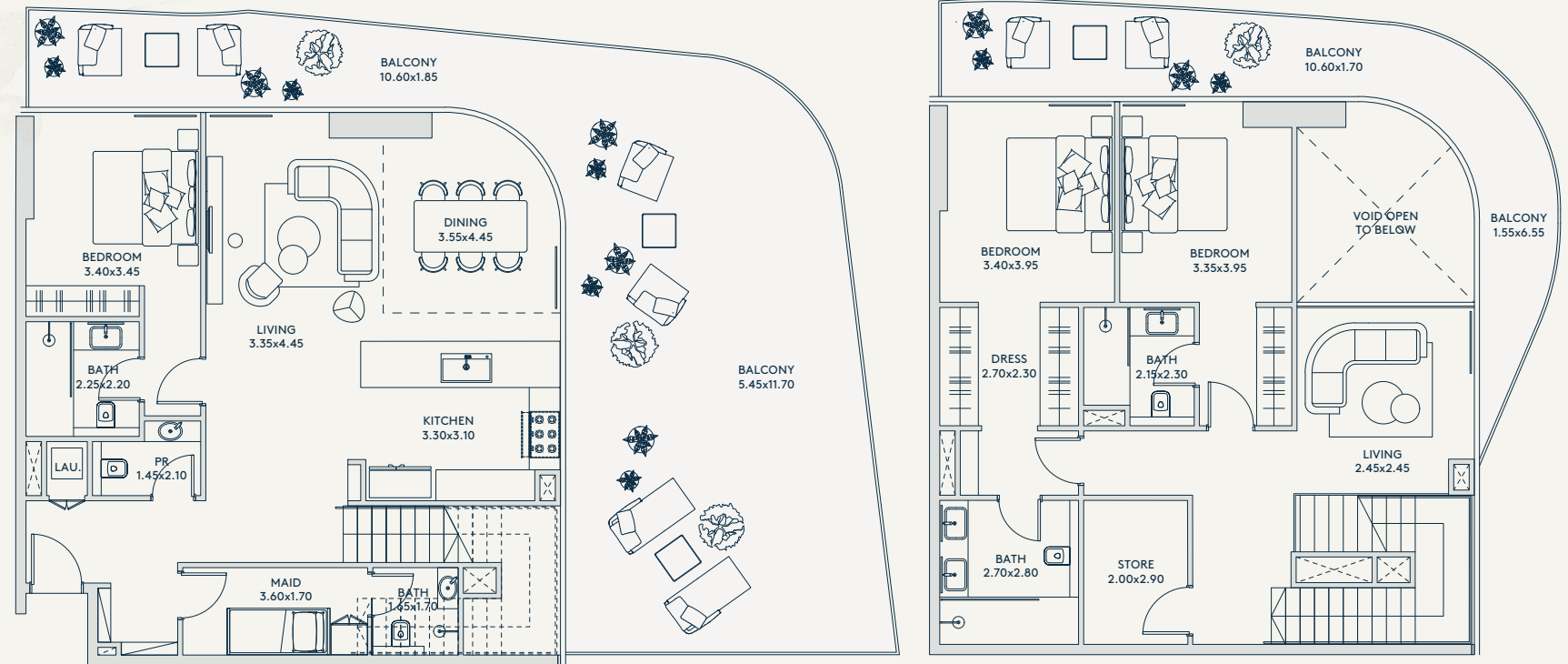
1,360 SQ.FT.

TOTAL

3,423 SQ.FT.

RIVAGE

AL REEM ISLAND



SEA & CITY VIEW

SEA/
MANGROVE
VIEW

CENTRAL
PARK, CITY &
MANGROVE VIEW

LEVEL 26

MANGROVE VIEW

LEVEL 25

ALL THE DIMENSIONS ARE IN METERS. THE UNIT SHOWN IS TYPICAL, AND ACTUAL UNIT MAY VARY IN DIMENSIONS, AREAS, LAYOUT, MATERIAL SPECIFICATION, ORIENTATION, AND LOCATION. SOME OF THE UNITS MAY HAVE A MIRRORED LAYOUT OF THE ABOVE PLAN. UNIT WINDOWS, FAÇADE, BALCONY DOOR LOCATION, FIXTURES, KITCHEN CABINETS, SANITARY WARE, AND WARDROBES, INCLUDING EACH OF THEIR LOCATION AS SHOWN IN THE PLAN IS INDICATIVE AND SUBJECT TO REVISION BY THE SELLER. ALL FIXTURES, FITTINGS, GOODS, ACCESSORIES, AND FURNITURE REFLECTED/DISPLAYED IN THIS PLAN(S) ARE STRICTLY ILLUSTRATIVE AND REPRESENTATIONAL (NOT ACTUAL) IN NATURE AND ARE ONLY FOR THE PURPOSE OF ILLUSTRATING /REFLECTING ONE OF THE POSSIBLE LAYOUTS WHICH THE PURCHASER COULD ARRANGE AFTER THE UNIT IS HANDED OVER AND DO NOT FORM PART OF THE UNIT. NO FURNITURE, GOODS, ACCESSORIES ARE INCLUDED IN THE SALE, UNLESS SUCH ITEMS ARE SPECIFICALLY INCLUDED IN SCHEDULE A OF THE SPA.



TYPE

4A 3 BHK DUPLEX

FLOORS

23 - 26

INTERIOR

2,067 SQ.FT.

EXTERIOR

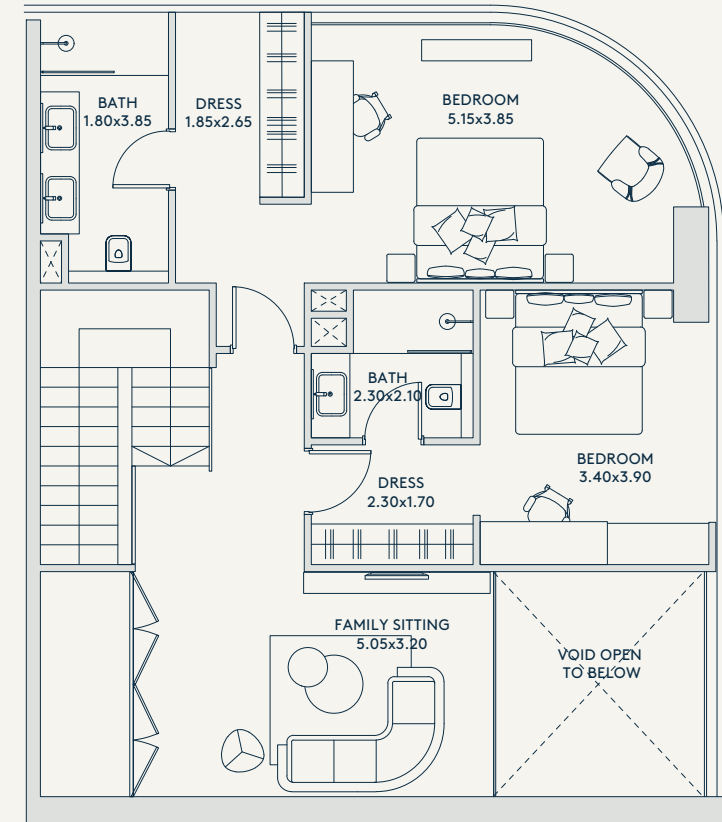
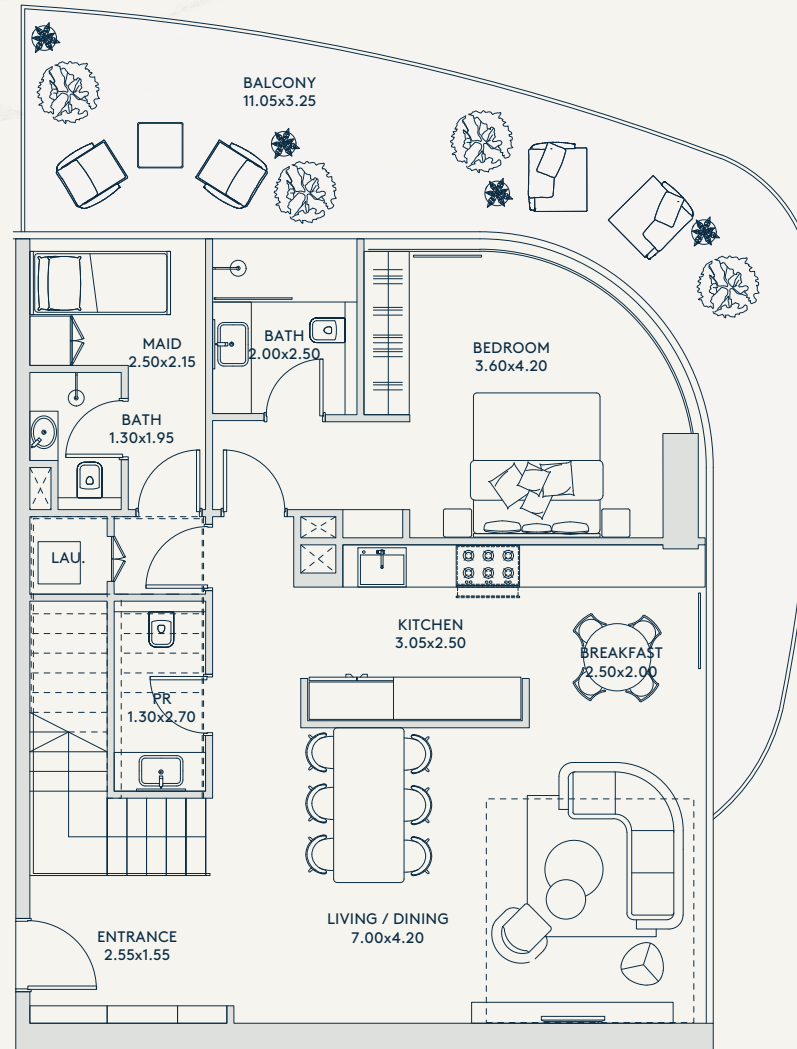
417 SQ.FT.

TOTAL

2,484 SQ.FT.

RIVAGE

AL REEM ISLAND



SEA / MANGROVE VIEW

SEA & CITY VIEW

CENTRAL PARK, CITY & MANGROVE VIEW

LEVEL 24 and 26

MANGROVE VIEW

LEVEL 23 and 25

ALL THE DIMENSIONS ARE IN METERS. THE UNIT SHOWN IS TYPICAL, AND ACTUAL UNIT MAY VARY IN DIMENSIONS, AREAS, LAYOUT, MATERIAL SPECIFICATION, ORIENTATION, AND LOCATION. SOME OF THE UNITS MAY HAVE A MIRRORED LAYOUT OF THE ABOVE PLAN. UNIT WINDOWS, FAÇADE, BALCONY DOOR LOCATION, FIXTURES, KITCHEN CABINETS, SANITARY WARE, AND WARDROBES, INCLUDING EACH OF THEIR LOCATION AS SHOWN IN THE PLAN IS INDICATIVE AND SUBJECT TO REVISION BY THE SELLER. ALL FIXTURES, FITTINGS, GOODS, ACCESSORIES, AND FURNITURE REFLECTED/DISPLAYED IN THIS PLAN(S) ARE STRICTLY ILLUSTRATIVE AND REPRESENTATIONAL (NOT ACTUAL) IN NATURE AND ARE ONLY FOR THE PURPOSE OF ILLUSTRATING / REFLECTING ONE OF THE POSSIBLE LAYOUTS WHICH THE PURCHASER COULD ARRANGE AFTER THE UNIT IS HANDED OVER AND DO NOT FORM PART OF THE UNIT. NO FURNITURE, GOODS, ACCESSORIES ARE INCLUDED IN THE SALE, UNLESS SUCH ITEMS ARE SPECIFICALLY INCLUDED IN SCHEDULE A OF THE SPA.



TYPE

5A 3 BHK DUPLEX

FLOORS

23 - 26

INTERIOR

2,177 SQ.FT.

EXTERIOR

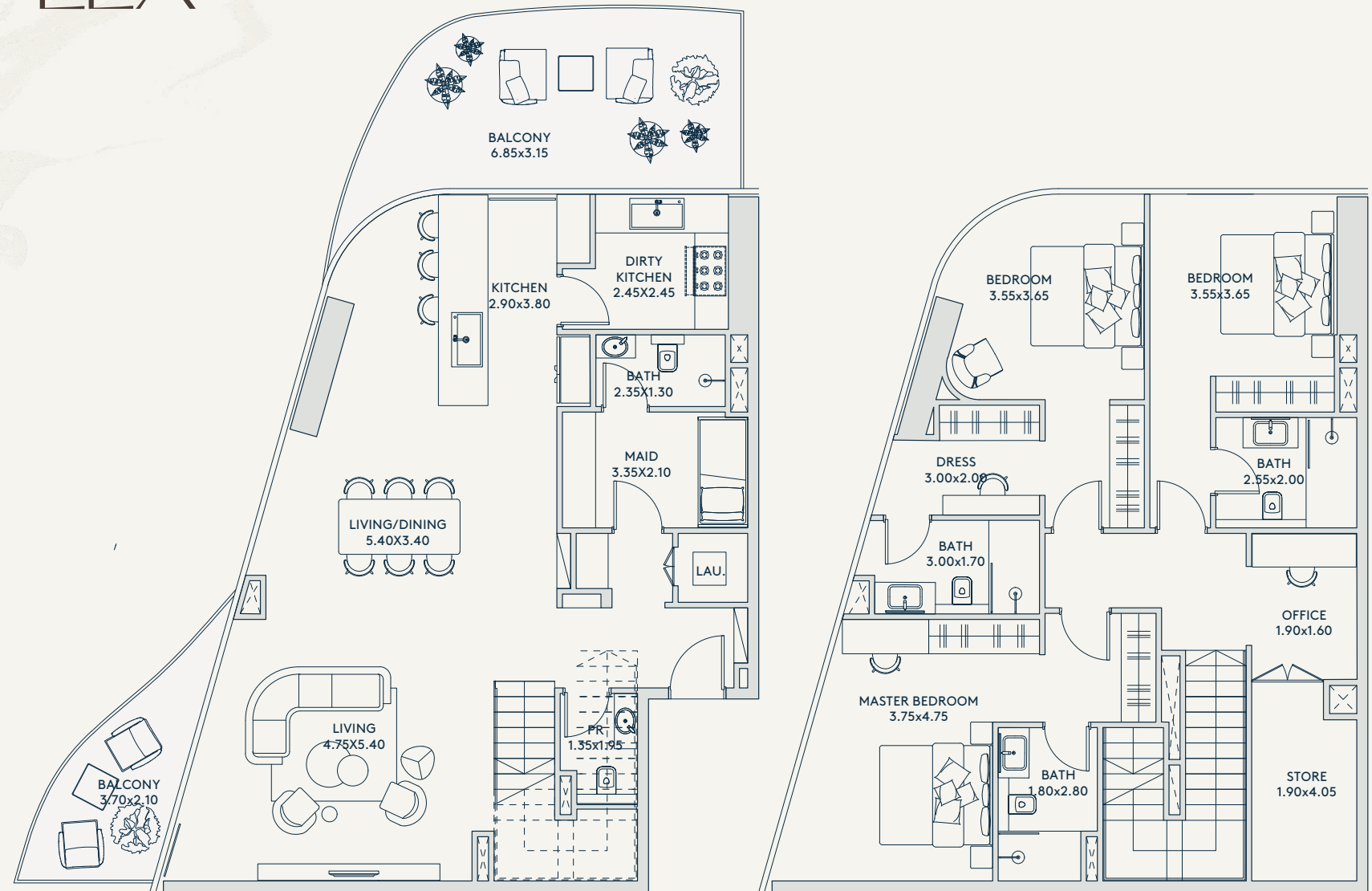
331 SQ.FT.

TOTAL

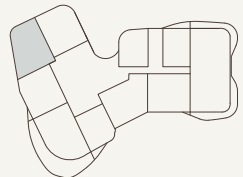
2,508 SQ.FT.

RIVAGE

AL REEM ISLAND



SEA/
MANGROVE
VIEW

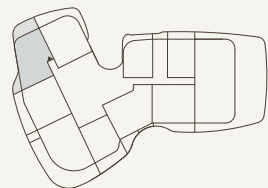


SEA & CITY VIEW

CENTRAL
PARK, CITY &
MANGROVE VIEW

LEVEL 24 and 26

MANGROVE VIEW



LEVEL 23 and 25

ALL THE DIMENSIONS ARE IN METERS. THE UNIT SHOWN IS TYPICAL, AND ACTUAL UNIT MAY VARY IN DIMENSIONS, AREAS, LAYOUT, MATERIAL SPECIFICATION, ORIENTATION, AND LOCATION. SOME OF THE UNITS MAY HAVE A MIRRORED LAYOUT OF THE ABOVE PLAN. UNIT WINDOWS, FAÇADE, BALCONY DOOR LOCATION, FIXTURES, KITCHEN CABINETS, SANITARY WARE, AND WARDROBES, INCLUDING EACH OF THEIR LOCATION AS SHOWN IN THE PLAN IS INDICATIVE AND SUBJECT TO REVISION BY THE SELLER. ALL FIXTURES, FITTINGS, GOODS, ACCESSORIES, AND FURNITURE REFLECTED/DISPLAYED IN THIS PLAN(S) ARE STRICTLY ILLUSTRATIVE AND REPRESENTATIONAL (NOT ACTUAL) IN NATURE AND ARE ONLY FOR THE PURPOSE OF ILLUSTRATING /REFLECTING ONE OF THE POSSIBLE LAYOUTS WHICH THE PURCHASER COULD ARRANGE AFTER THE UNIT IS HANDED OVER AND DO NOT FORM PART OF THE UNIT. NO FURNITURE, GOODS, ACCESSORIES ARE INCLUDED IN THE SALE, UNLESS SUCH ITEMS ARE SPECIFICALLY INCLUDED IN SCHEDULE A OF THE SPA.



TYPE

6A 3 BHK DUPLEX

FLOORS

23 - 26

INTERIOR

1,951 SQ.FT.

EXTERIOR

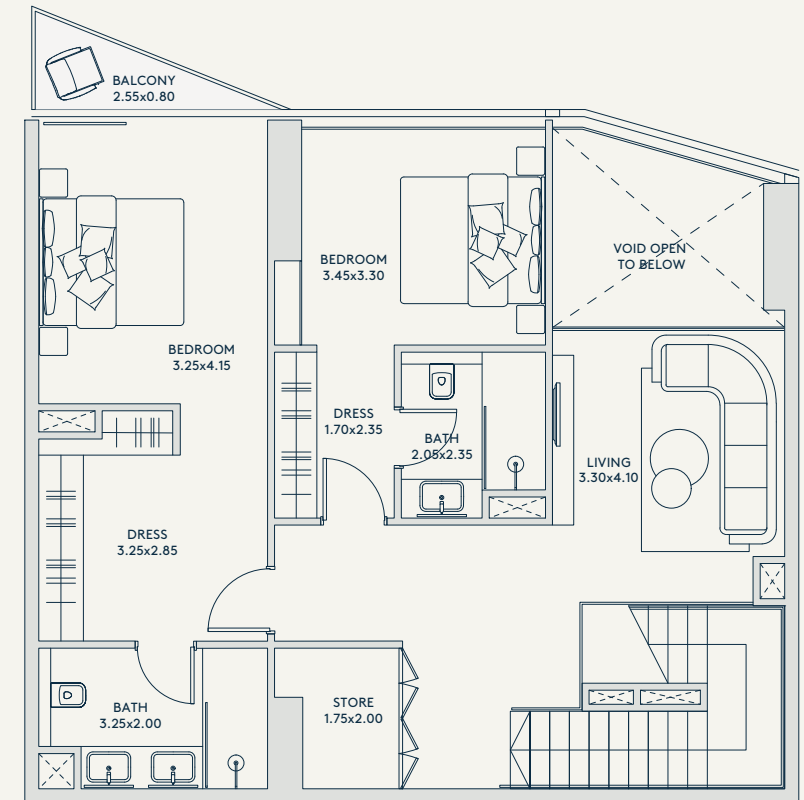
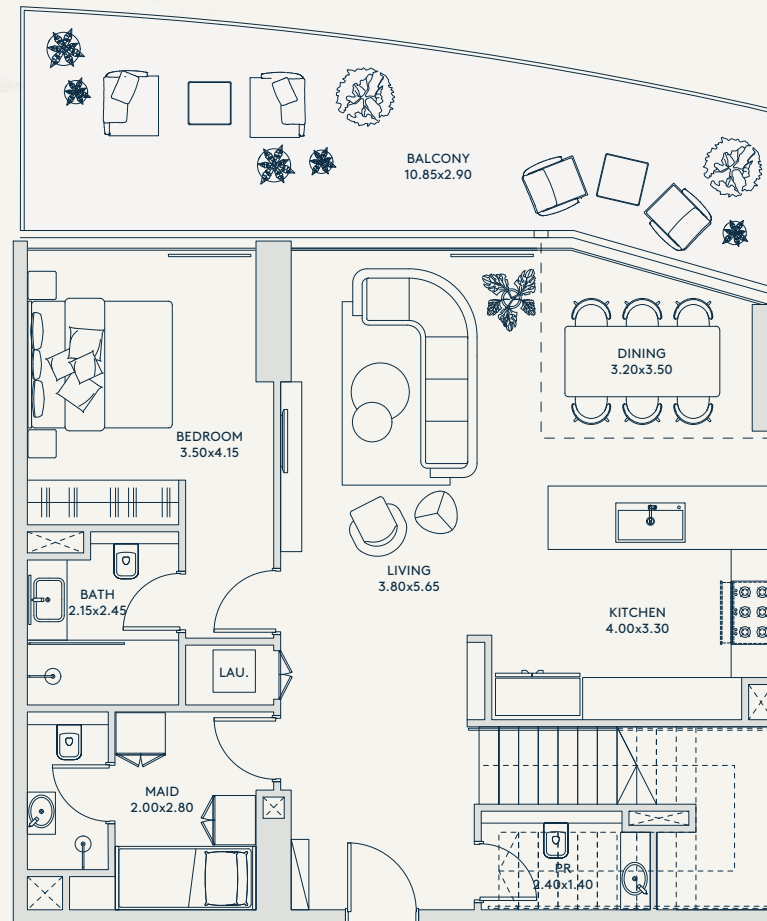
353 SQ.FT.

TOTAL

2,304 SQ.FT.

RIVAGE

AL REEM ISLAND



SEA & CITY VIEW

SEA/
MANGROVE
VIEW

CENTRAL
PARK, CITY &
MANGROVE VIEW

LEVEL 24 and 26

MANGROVE VIEW

LEVEL 23 and 25

ALL THE DIMENSIONS ARE IN METERS. THE UNIT SHOWN IS TYPICAL, AND ACTUAL UNIT MAY VARY IN DIMENSIONS, AREAS, LAYOUT, MATERIAL SPECIFICATION, ORIENTATION, AND LOCATION. SOME OF THE UNITS MAY HAVE A MIRRORED LAYOUT OF THE ABOVE PLAN. UNIT WINDOWS, FAÇADE, BALCONY DOOR LOCATION, FIXTURES, KITCHEN CABINETS, SANITARY WARE, AND WARDROBES, INCLUDING EACH OF THEIR LOCATION AS SHOWN IN THE PLAN IS INDICATIVE AND SUBJECT TO REVISION BY THE SELLER. ALL FIXTURES, FITTINGS, GOODS, ACCESSORIES, AND FURNITURE REFLECTED/DISPLAYED IN THIS PLAN(S) ARE STRICTLY ILLUSTRATIVE AND REPRESENTATIONAL (NOT ACTUAL) IN NATURE AND ARE ONLY FOR THE PURPOSE OF ILLUSTRATING /REFLECTING ONE OF THE POSSIBLE LAYOUTS WHICH THE PURCHASER COULD ARRANGE AFTER THE UNIT IS HANDED OVER AND DO NOT FORM PART OF THE UNIT. NO FURNITURE, GOODS, ACCESSORIES ARE INCLUDED IN THE SALE, UNLESS SUCH ITEMS ARE SPECIFICALLY INCLUDED IN SCHEDULE A OF THE SPA.



TYPE

7A

3 BHK
DUPLEX

FLOORS

23 - 24

INTERIOR

2,368 SQ.FT.

EXTERIOR

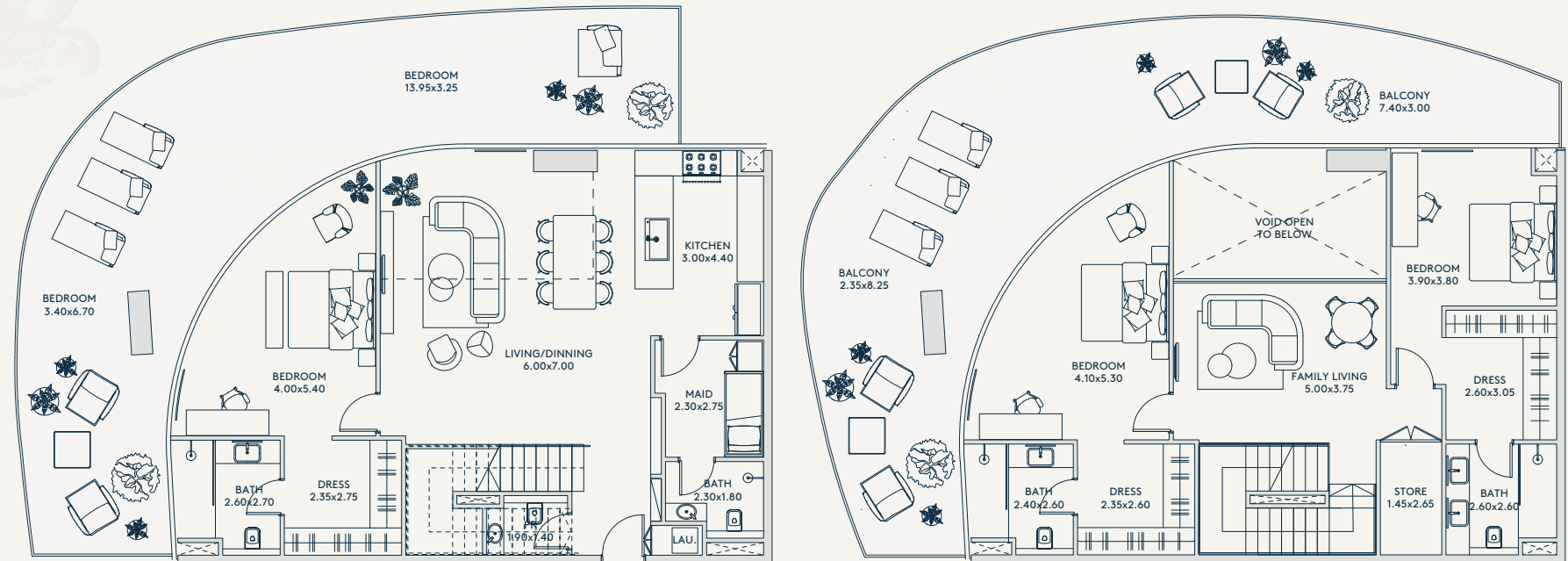
1,763 SQ.FT.

TOTAL

4,131 SQ.FT.

RIVAGE

AL REEM ISLAND



SEA & CITY VIEW

SEA/
MANGROVE
VIEW

CENTRAL
PARK, CITY &
MANGROVE VIEW

LEVEL 24

MANGROVE VIEW

LEVEL 23

ALL THE DIMENSIONS ARE IN METERS. THE UNIT SHOWN IS TYPICAL, AND ACTUAL UNIT MAY VARY IN DIMENSIONS, AREAS, LAYOUT, MATERIAL SPECIFICATION, ORIENTATION, AND LOCATION. SOME OF THE UNITS MAY HAVE A MIRRORED LAYOUT OF THE ABOVE PLAN. UNIT WINDOWS, FAÇADE, BALCONY DOOR LOCATION, FIXTURES, KITCHEN CABINETS, SANITARY WARE, AND WARDROBES, INCLUDING EACH OF THEIR LOCATION AS SHOWN IN THE PLAN IS INDICATIVE AND SUBJECT TO REVISION BY THE SELLER. ALL FIXTURES, FITTINGS, GOODS, ACCESSORIES, AND FURNITURE REFLECTED/DISPLAYED IN THIS PLAN(S) ARE STRICTLY ILLUSTRATIVE AND REPRESENTATIONAL (NOT ACTUAL) IN NATURE AND ARE ONLY FOR THE PURPOSE OF ILLUSTRATING /REFLECTING ONE OF THE POSSIBLE LAYOUTS WHICH THE PURCHASER COULD ARRANGE AFTER THE UNIT IS HANDED OVER AND DO NOT FORM PART OF THE UNIT. NO FURNITURE, GOODS, ACCESSORIES ARE INCLUDED IN THE SALE, UNLESS SUCH ITEMS ARE SPECIFICALLY INCLUDED IN SCHEDULE A OF THE SPA.



SKY PALACE

8

TYPE

1A

SKY
PALACE

FLOORS

27

INTERIOR

3,445 SQ.FT.

TOTAL

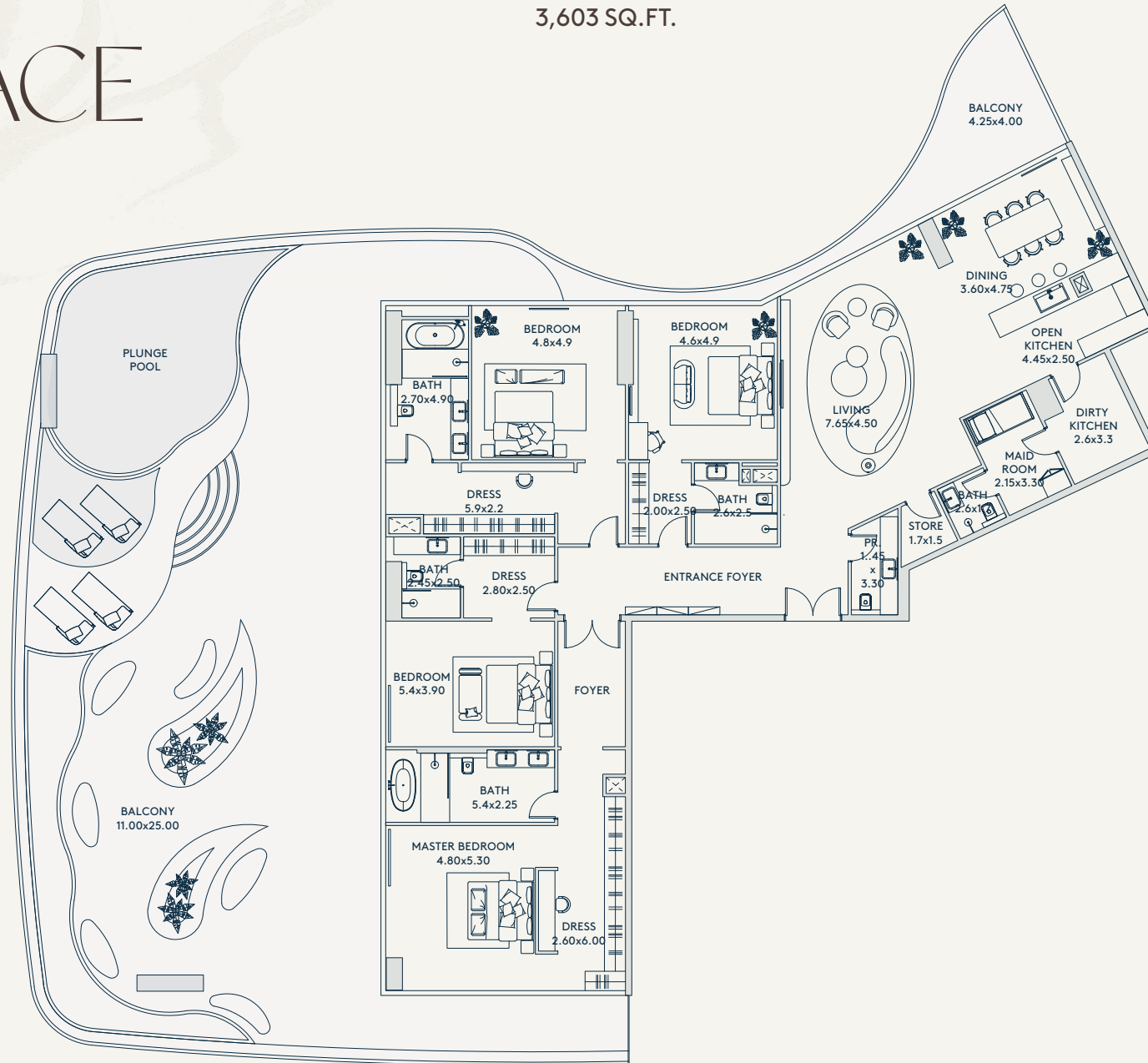
7,048 SQ.FT.

EXTERIOR

3,603 SQ.FT.

RIVAGE

AL REEM ISLAND



MANGROVE VIEW
SEA & CITY VIEW

SEA/
MANGROVE
VIEW

CENTRAL
PARK, CITY &
MANGROVE VIEW

LEVEL 27

MANGROVE VIEW

ALL THE DIMENSIONS ARE IN METERS. THE UNIT SHOWN IS TYPICAL, AND ACTUAL UNIT MAY VARY IN DIMENSIONS, AREAS, LAYOUT, MATERIAL SPECIFICATION, ORIENTATION, AND LOCATION. SOME OF THE UNITS MAY HAVE A MIRRORED LAYOUT OF THE ABOVE PLAN. UNIT WINDOWS, FAÇADE, BALCONY DOOR LOCATION, FIXTURES, KITCHEN CABINETS, SANITARY WARE, AND WARDROBES, INCLUDING EACH OF THEIR LOCATION AS SHOWN IN THE PLAN IS INDICATIVE AND SUBJECT TO REVISION BY THE SELLER. ALL FIXTURES, FITTINGS, GOODS, ACCESSORIES, AND FURNITURE REFLECTED/DISPLAYED IN THIS PLAN(S) ARE STRICTLY ILLUSTRATIVE AND REPRESENTATIONAL (NOT ACTUAL) IN NATURE AND ARE ONLY FOR THE PURPOSE OF ILLUSTRATING /REFLECTING ONE OF THE POSSIBLE LAYOUTS WHICH THE PURCHASER COULD ARRANGE AFTER THE UNIT IS HANDED OVER AND DO NOT FORM PART OF THE UNIT. NO FURNITURE, GOODS, ACCESSORIES ARE INCLUDED IN THE SALE, UNLESS SUCH ITEMS ARE SPECIFICALLY INCLUDED IN SCHEDULE A OF THE SPA.



TYPE

2A SKY PALACE

FLOORS

27

INTERIOR

3,629 SQ.FT.

TOTAL

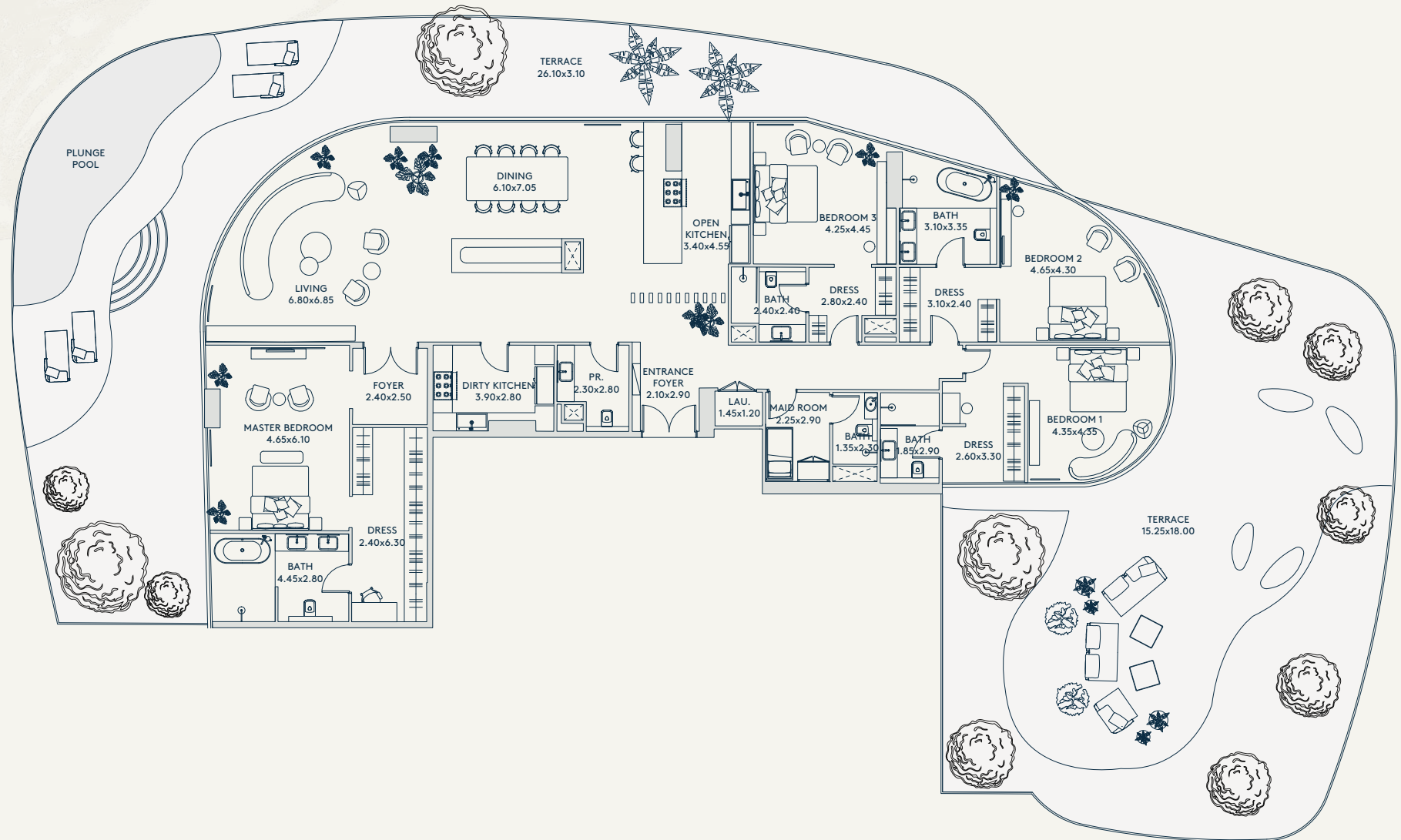
7,790 SQ.FT.

EXTERIOR

4,161 SQ.FT.

RIVAGE

AL REEM ISLAND



MANGROVE VIEW
SEA & CITY VIEW

SEA/
MANGROVE
VIEW

CENTRAL
PARK, CITY &
MANGROVE VIEW

LEVEL 27

MANGROVE VIEW

ALL THE DIMENSIONS ARE IN METERS. THE UNIT SHOWN IS TYPICAL, AND ACTUAL UNIT MAY VARY IN DIMENSIONS, AREAS, LAYOUT, MATERIAL SPECIFICATION, ORIENTATION, AND LOCATION. SOME OF THE UNITS MAY HAVE A MIRRORED LAYOUT OF THE ABOVE PLAN. UNIT WINDOWS, FAÇADE, BALCONY DOOR LOCATION, FIXTURES, KITCHEN CABINETS, SANITARY WARE, AND WARDROBES, INCLUDING EACH OF THEIR LOCATION AS SHOWN IN THE PLAN IS INDICATIVE AND SUBJECT TO REVISION BY THE SELLER. ALL FIXTURES, FITTINGS, GOODS, ACCESSORIES, AND FURNITURE REFLECTED/DISPLAYED IN THIS PLAN(S) ARE STRICTLY ILLUSTRATIVE AND REPRESENTATIONAL (NOT ACTUAL) IN NATURE AND ARE ONLY FOR THE PURPOSE OF ILLUSTRATING /REFLECTING ONE OF THE POSSIBLE LAYOUTS WHICH THE PURCHASER COULD ARRANGE AFTER THE UNIT IS HANDED OVER AND DO NOT FORM PART OF THE UNIT. NO FURNITURE, GOODS, ACCESSORIES ARE INCLUDED IN THE SALE, UNLESS SUCH ITEMS ARE SPECIFICALLY INCLUDED IN SCHEDULE A OF THE SPA.



SKY VILLA

8

TYPE

1A

SKY
VILLA

LOWER LEVEL

FLOORS

23-24

INTERIOR

4,108 SQ.FT.

EXTERIOR

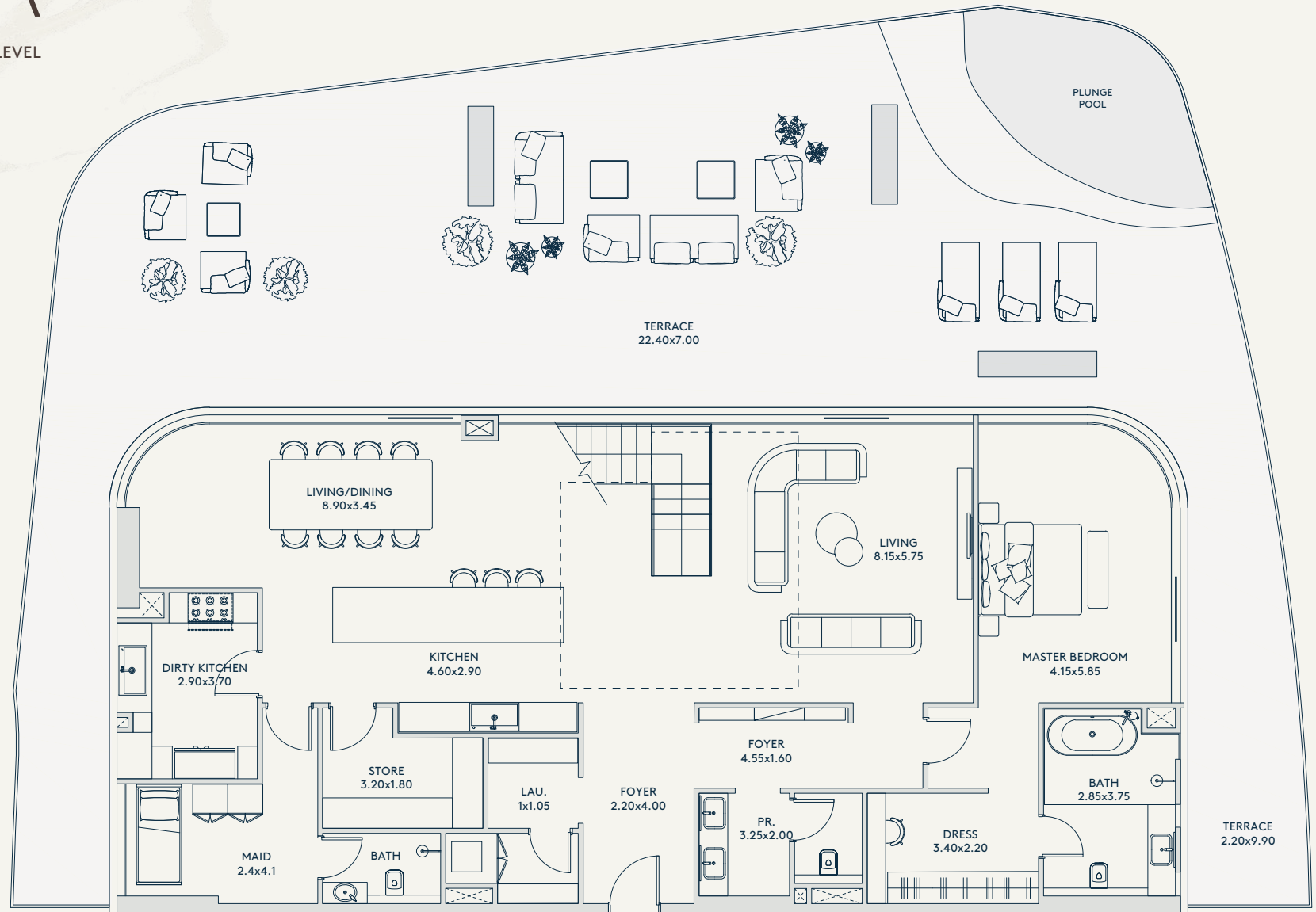
2,984 SQ.FT.

TOTAL

7,092 SQ.FT.

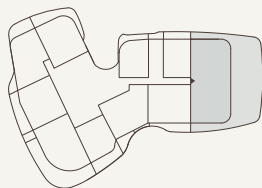
RIVAGE

AL REEM ISLAND



SEA & CITY VIEW

SEA/
MANGROVE
VIEW



CENTRAL
PARK, CITY &
MANGROVE VIEW

MANGROVE VIEW

ALL THE DIMENSIONS ARE IN METERS. THE UNIT SHOWN IS TYPICAL, AND ACTUAL UNIT MAY VARY IN DIMENSIONS, AREAS, LAYOUT, MATERIAL SPECIFICATION, ORIENTATION, AND LOCATION. SOME OF THE UNITS MAY HAVE A MIRRORED LAYOUT OF THE ABOVE PLAN. UNIT WINDOWS, FAÇADE, BALCONY DOOR LOCATION, FIXTURES, KITCHEN CABINETS, SANITARY WARE, AND WARDROBES, INCLUDING EACH OF THEIR LOCATION AS SHOWN IN THE PLAN IS INDICATIVE AND SUBJECT TO REVISION BY THE SELLER. ALL FIXTURES, FITTINGS, GOODS, ACCESSORIES, AND FURNITURE REFLECTED/DISPLAYED IN THIS PLAN(S) ARE STRICTLY ILLUSTRATIVE AND REPRESENTATIONAL (NOT ACTUAL) IN NATURE AND ARE ONLY FOR THE PURPOSE OF ILLUSTRATING /REFLECTING ONE OF THE POSSIBLE LAYOUTS WHICH THE PURCHASER COULD ARRANGE AFTER THE UNIT IS HANDED OVER AND DO NOT FORM PART OF THE UNIT. NO FURNITURE, GOODS, ACCESSORIES ARE INCLUDED IN THE SALE, UNLESS SUCH ITEMS ARE SPECIFICALLY INCLUDED IN SCHEDULE A OF THE SPA.

LEVEL 23



TYPE

1A

SKY VILLA

UPPER LEVEL

FLOORS

23-24

INTERIOR

4,108 SQ.FT.

EXTERIOR

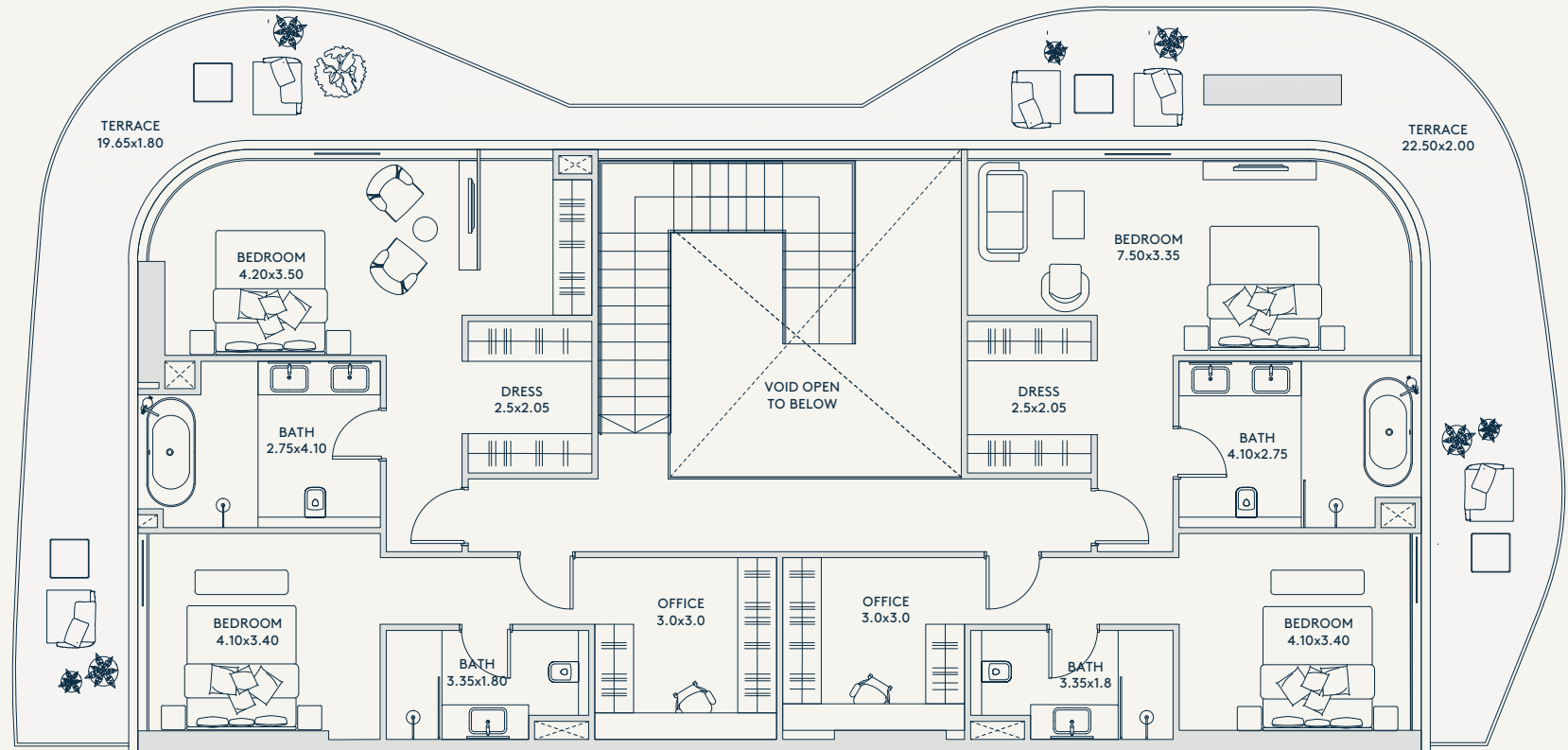
2,984 SQ.FT.

TOTAL

7,092 SQ.FT.

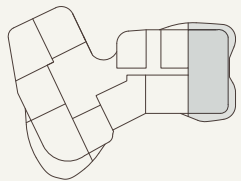
RIVAGE

AL REEM ISLAND



SEA & CITY VIEW

SEA/
MANGROVE
VIEW



CENTRAL
PARK, CITY &
MANGROVE VIEW

MANGROVE VIEW

ALL THE DIMENSIONS ARE IN METERS. THE UNIT SHOWN IS TYPICAL, AND ACTUAL UNIT MAY VARY IN DIMENSIONS, AREAS, LAYOUT, MATERIAL SPECIFICATION, ORIENTATION, AND LOCATION. SOME OF THE UNITS MAY HAVE A MIRRORED LAYOUT OF THE ABOVE PLAN. UNIT WINDOWS, FAÇADE, BALCONY DOOR LOCATION, FIXTURES, KITCHEN CABINETS, SANITARY WARE, AND WARDROBES, INCLUDING EACH OF THEIR LOCATION AS SHOWN IN THE PLAN IS INDICATIVE AND SUBJECT TO REVISION BY THE SELLER. ALL FIXTURES, FITTINGS, GOODS, ACCESSORIES, AND FURNITURE REFLECTED/DISPLAYED IN THIS PLAN(S) ARE STRICTLY ILLUSTRATIVE AND REPRESENTATIONAL (NOT ACTUAL) IN NATURE AND ARE ONLY FOR THE PURPOSE OF ILLUSTRATING /REFLECTING ONE OF THE POSSIBLE LAYOUTS WHICH THE PURCHASER COULD ARRANGE AFTER THE UNIT IS HANDED OVER AND DO NOT FORM PART OF THE UNIT. NO FURNITURE, GOODS, ACCESSORIES ARE INCLUDED IN THE SALE, UNLESS SUCH ITEMS ARE SPECIFICALLY INCLUDED IN SCHEDULE A OF THE SPA.



LEVEL 24

TYPE

2A SKY VILLA

LOWER LEVEL

FLOORS

25-26

INTERIOR

3,101 SQ.FT.

TOTAL

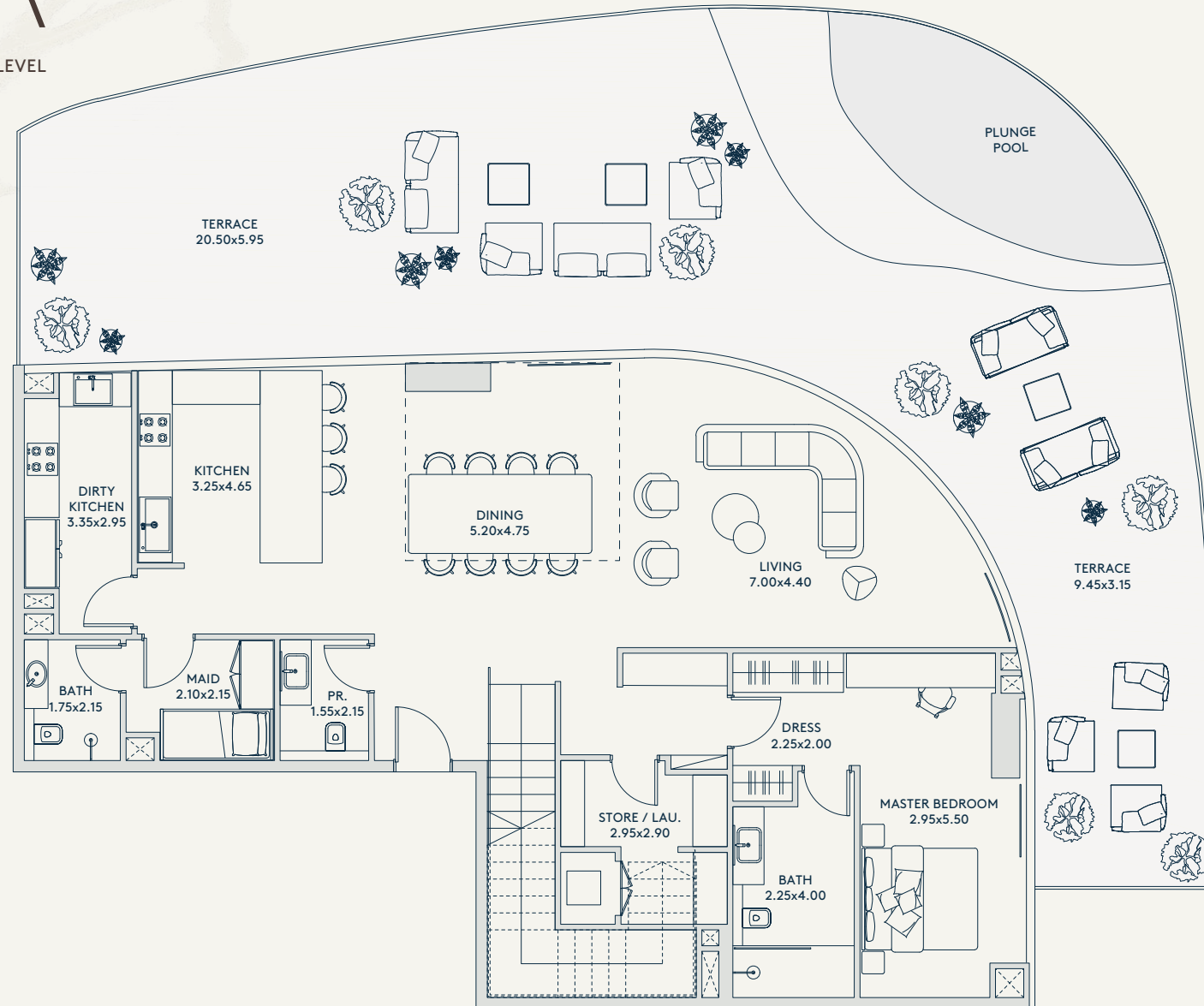
6,109 SQ.FT.

RIVAGE

AL REEM ISLAND

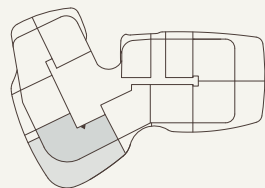
EXTERIOR

3,008 SQ.FT.



SEA & CITY VIEW

SEA/
MANGROVE
VIEW



CENTRAL
PARK, CITY &
MANGROVE VIEW

MANGROVE VIEW

LEVEL 25

ALL THE DIMENSIONS ARE IN METERS. THE UNIT SHOWN IS TYPICAL, AND ACTUAL UNIT MAY VARY IN DIMENSIONS, AREAS, LAYOUT, MATERIAL SPECIFICATION, ORIENTATION, AND LOCATION. SOME OF THE UNITS MAY HAVE A MIRRORED LAYOUT OF THE ABOVE PLAN. UNIT WINDOWS, FAÇADE, BALCONY DOOR LOCATION, FIXTURES, KITCHEN CABINETS, SANITARY WARE, AND WARDROBES, INCLUDING EACH OF THEIR LOCATION AS SHOWN IN THE PLAN IS INDICATIVE AND SUBJECT TO REVISION BY THE SELLER. ALL FIXTURES, FITTINGS, GOODS, ACCESSORIES, AND FURNITURE REFLECTED/DISPLAYED IN THIS PLAN(S) ARE STRICTLY ILLUSTRATIVE AND REPRESENTATIONAL (NOT ACTUAL) IN NATURE AND ARE ONLY FOR THE PURPOSE OF ILLUSTRATING /REFLECTING ONE OF THE POSSIBLE LAYOUTS WHICH THE PURCHASER COULD ARRANGE AFTER THE UNIT IS HANDED OVER AND DO NOT FORM PART OF THE UNIT. NO FURNITURE, GOODS, ACCESSORIES ARE INCLUDED IN THE SALE, UNLESS SUCH ITEMS ARE SPECIFICALLY INCLUDED IN SCHEDULE A OF THE SPA.



TYPE

2A SKY VILLA

UPPER LEVEL

FLOORS

25-26

INTERIOR

3,101 SQ.FT.

EXTERIOR

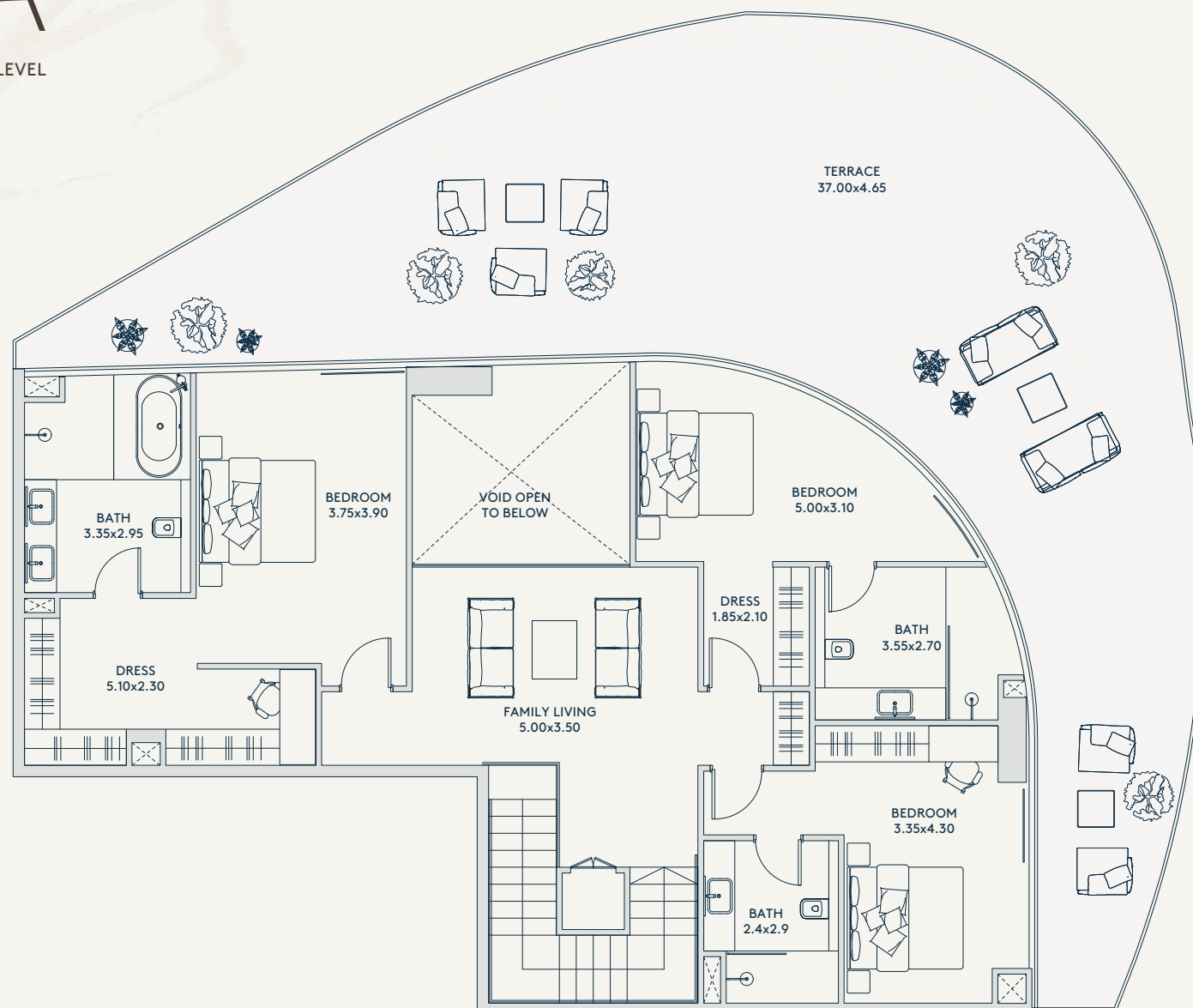
3,008 SQ.FT.

TOTAL

6,109 SQ.FT.

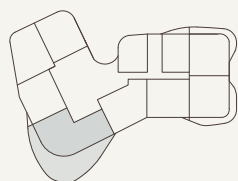
RIVAGE

AL REEM ISLAND



SEA & CITY VIEW

SEA/
MANGROVE
VIEW



MANGROVE VIEW

CENTRAL
PARK, CITY &
MANGROVE VIEW

ALL THE DIMENSIONS ARE IN METERS. THE UNIT SHOWN IS TYPICAL, AND ACTUAL UNIT MAY VARY IN DIMENSIONS, AREAS, LAYOUT, MATERIAL SPECIFICATION, ORIENTATION, AND LOCATION. SOME OF THE UNITS MAY HAVE A MIRRORED LAYOUT OF THE ABOVE PLAN. UNIT WINDOWS, FAÇADE, BALCONY DOOR LOCATION, FIXTURES, KITCHEN CABINETS, SANITARY WARE, AND WARDROBES, INCLUDING EACH OF THEIR LOCATION AS SHOWN IN THE PLAN IS INDICATIVE AND SUBJECT TO REVISION BY THE SELLER. ALL FIXTURES, FITTINGS, GOODS, ACCESSORIES, AND FURNITURE REFLECTED/DISPLAYED IN THIS PLAN(S) ARE STRICTLY ILLUSTRATIVE AND REPRESENTATIONAL (NOT ACTUAL) IN NATURE AND ARE ONLY FOR THE PURPOSE OF ILLUSTRATING /REFLECTING ONE OF THE POSSIBLE LAYOUTS WHICH THE PURCHASER COULD ARRANGE AFTER THE UNIT IS HANDED OVER AND DO NOT FORM PART OF THE UNIT. NO FURNITURE, GOODS, ACCESSORIES ARE INCLUDED IN THE SALE, UNLESS SUCH ITEMS ARE SPECIFICALLY INCLUDED IN SCHEDULE A OF THE SPA.



LEVEL 26