

DUSK  
— BY —  
BINGHATTI



## Dusk [ duhsk ] *noun.*

*Evoking the enigmatic transition between day and night, dusk is a metaphor for transitions, endings, and the ephemeral nature of life itself captivating the heart and mind with its fascinating allure.*







Binghatti is a renowned Emirati property brand in Dubai, United Arab Emirates. The brand stands as an emblem of excellence within the global real estate sector. Prominent for its distinguished portfolio comprising some of the world's most iconic architectural marvels, Binghatti caters to diverse market segments offering a spectrum ranging from accessible to ultra high-end projects. Its signature architectural ethos is a manifestation of the brand's unique design DNA meticulously woven into its expansive array of developments. With an astounding real estate portfolio boasting over 60 projects valued at an excess of AED 30 billion, Binghatti commands a notable position as one of the UAE's foremost privately held developers. The company successfully delivered 20,000 units prior to 2024, further solidifying its stature in Dubai's dynamic real estate landscape. Distinguished for its pioneering approach, Binghatti has formed unprecedented collaborations with prestigious luxury brands such as BUGATTI, Mercedes-Benz, and Jacob&Co. to craft unique branded real estate ventures - a distinction unmatched on a global scale.



A photograph of the Dubai skyline, featuring the Burj Khalifa, viewed through a large, dark, metallic archway. The scene is set against a hazy, blue-tinted sky and a body of water in the foreground. The archway's surface is reflective, showing highlights from the sky and the city lights.

## DUBAI'S RAPIDLY EVOLVING REAL ESTATE SCENE

The city epitomizes real estate advancement and speed with its futuristic skyline and relentless commitment to innovation. It stands as the global hub of tourism and trade due its strategic location and favourable regulations that attract investors seeking unparalleled opportunities.



# TABLE OF CONTENTS

01

*ABOUT  
THE PROJECT*

02

*DESIGN  
DETAILS*

03

*FLOOR PLANS*





ABOUT THE  
PROJECT



ENDINGS FADE INTO  
NASCENT BEGINNINGS





PROJECT LOCATION

# THE EPITOME OF SPEED AND ADVANCEMENT



E44 DUBAI  
ALKHAIL ROAD

BURJ  
AL ARAB

BINGHATTI  
DUSK

HESSA  
STREET

E311 SHEIKH  
MOHAMMAD BIN  
ZAYED ROAD

DOWNTOWN  
DUBAI



ABOUT THE PROJECT

# JUMEIRAH VILLAGE CIRCLE

Boasting a landscape that mirrors the city's relentless pace of advancement, Jumeirah Village Circle (JVC) stands as a testament to rapid growth in the real estate sector. With its strategic location and dynamic urban planning, JVC offers investors a promising landscape ripe with opportunities for lucrative returns and sustainable development.

NEARBY AMENITIES

MALL

- 1. Circle Mall

SUPERMARKET

- 1. Spinneys
- 2. Grandiose
- 3. Choithrams
- 4. Nesto Hypermarket
- 5. Viva Supermarket

SCHOOL

- 1. JSS International School
- 2. Kids World Nursery
- 3. Ladybird Nursery

ENTRY POINT

HOSPITAL/CLINIC

- 1. Aster Medical Clinic
- 2. Life Medical Center
- 3. Magnum Family Medical Center
- 4. Dr. Joy Dental Clinic

BINGHATTI PROJECTS

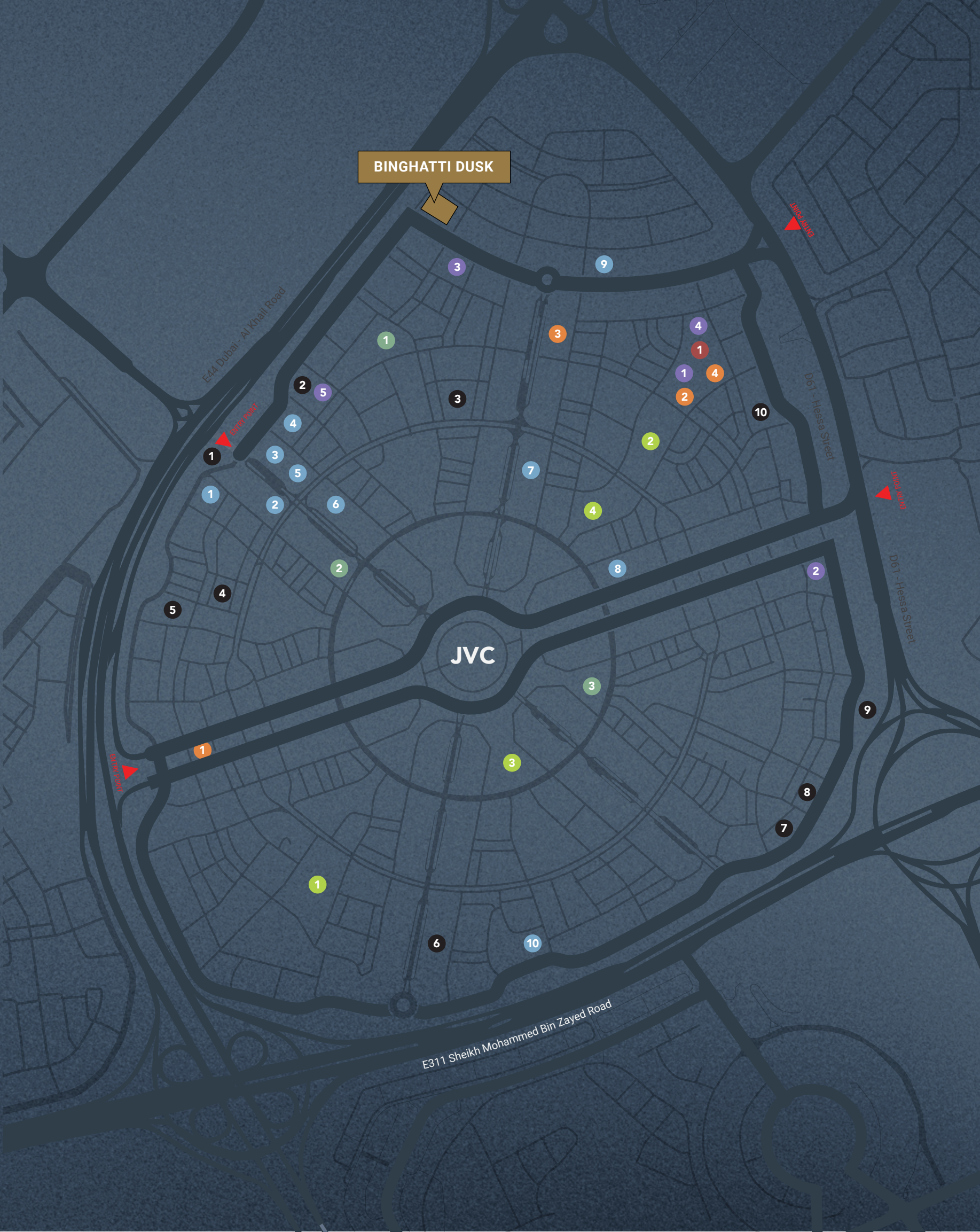
- 1. Binghatti Onyx
- 2. Binghatti Emerald
- 3. Binghatti House
- 4. Binghatti Corner
- 5. Binghatti Lavender
- 6. Binghatti Orchid
- 7. Binghatti Amber
- 8. Binghatti Gardenia
- 9. Binghatti Azure
- 10. Binghatti Venus

PARK

- 1. Halfa Park
- 2. RootsCamp
- 3. Community Park South
- 4. Community Park North

BINGHATTI COMPLETED PROJECT

- 1. Binghatti Gate
- 2. Binghatti Heights
- 3. Binghatti Mirage
- 4. Binghatti Rose
- 5. Binghatti Jasmine
- 6. Binghatti Crest
- 7. Binghatti Luna
- 8. Binghatti Nova
- 9. Binghatti Gems
- 10. Binghatti Crescent







ABOUT THE PROJECT

# PROJECT FACTS

**PROPERTY TYPE**

RESIDENTIAL & RETAIL

**PLOT AREA**

2593.16 SQM / 27912.51 SQFT

**DESCRIPTION**

2B + G + 4 RESIDENTIAL FLOORS  
+ ROOF

**NUMBER OF UNITS**

STUDIO APARTMENT - 52  
1 BEDROOM APARTMENT - 53

**TOTAL UNITS**

RESIDENTIAL UNITS - 105  
SHOP (GROUND FLOOR) - 02





## DESIGN DETAILS

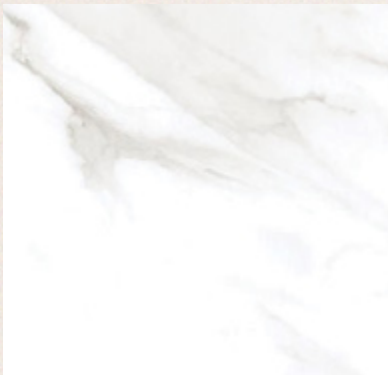


MATERIAL LIST

MAIN LOBBY



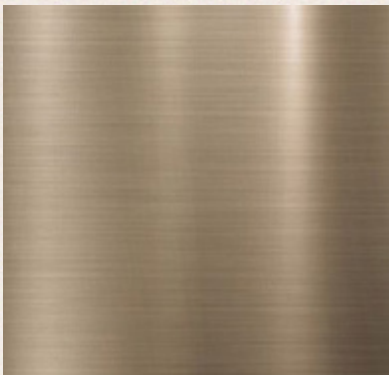
Light Grey Honed  
Concrete Paint



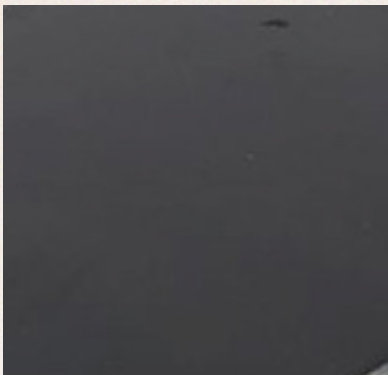
Statuario Marble



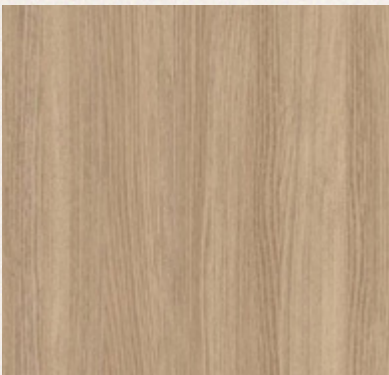
Travertine



Brushed Brass



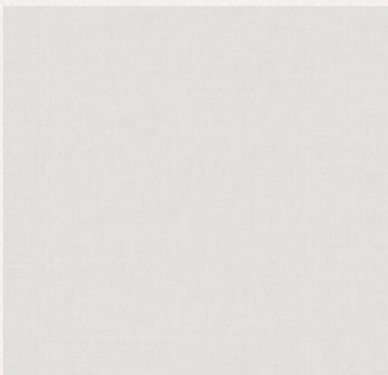
Tinted Glass



Oak Wood



Fluted Oak Wood



Wallpaper

All finishes are subject to change without notice at our sole discretion for any reason including aesthetic purposes.





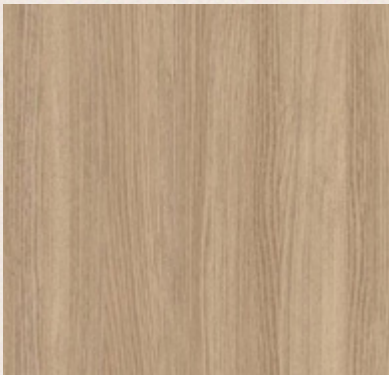
CREATING A SENSE OF FLOW  
AND MOVEMENT





MATERIAL LIST

APARTMENT



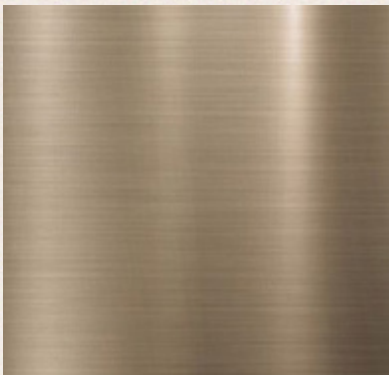
Oak Wood



Wood Porcelain



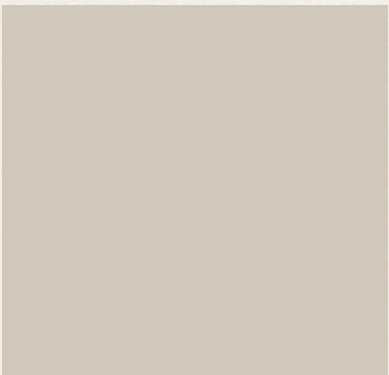
Travertine



Brushed Brass



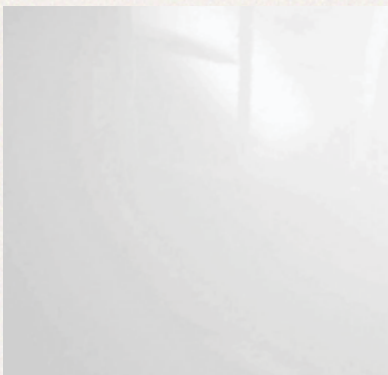
Mirror



Glossy Beige Wood



Fluted Oak Wood



Glossy White Wood

All finishes are subject to change without notice at our sole discretion for any reason including aesthetic purposes.





FLUIDITY TRANSCENDS  
FUNCTIONALITY









AN INTERPLAY OF  
DEPTHS & TEXTURES





A BEACON OF AUTHENTICITY  
AND CRAFTSMANSHIP





