



EXPLORE A RANGE OF *thoughtfully* CREATED

VILLAS.

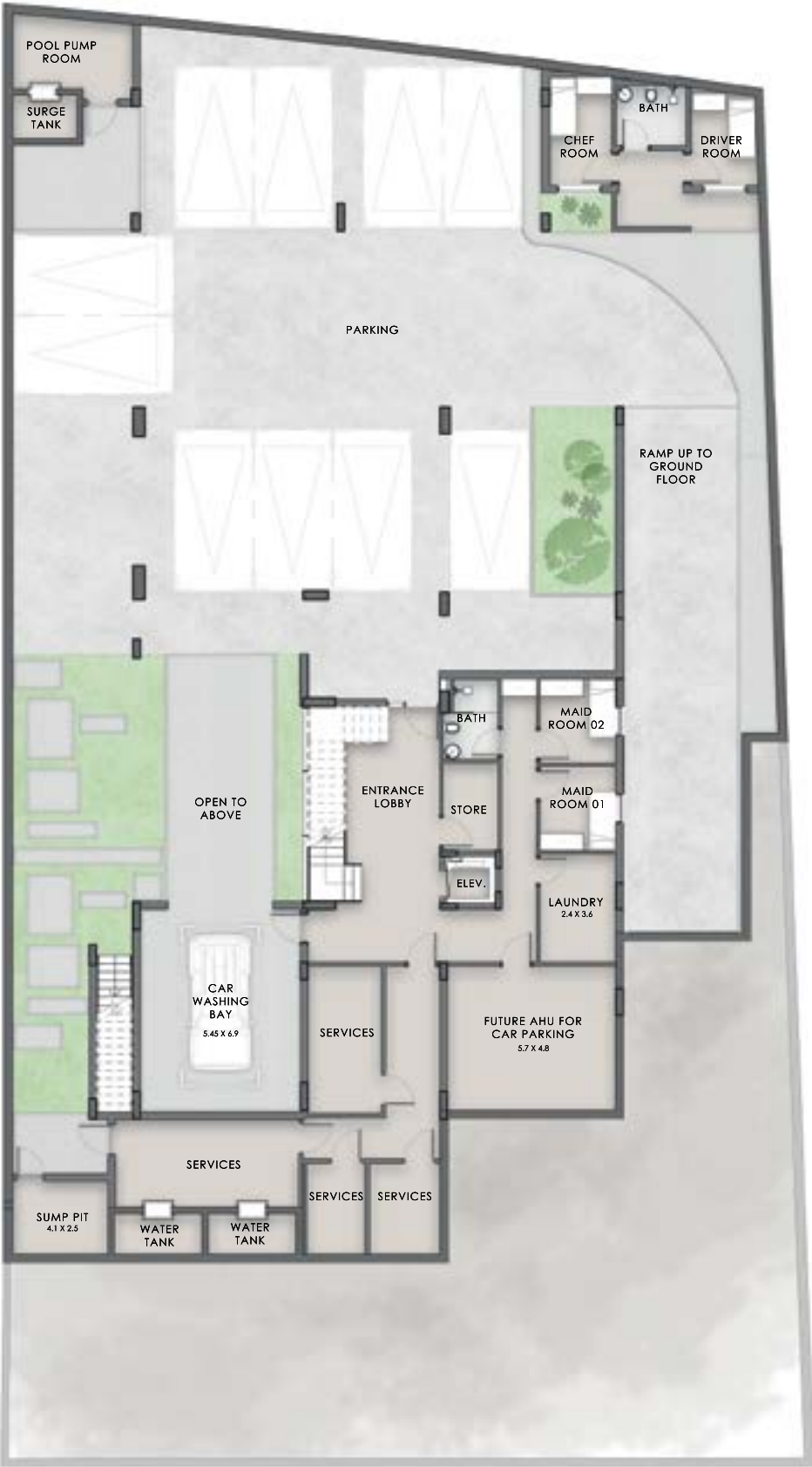


VILLA *type*

ONE

7 BEDROOM

PLOT SIZE RANGES  
FROM 12,986 SQ.FT TO 13,807 SQ.FT



BASEMENT  
9,538 SQ.FT



GROUND  
3,794 SQ.FT



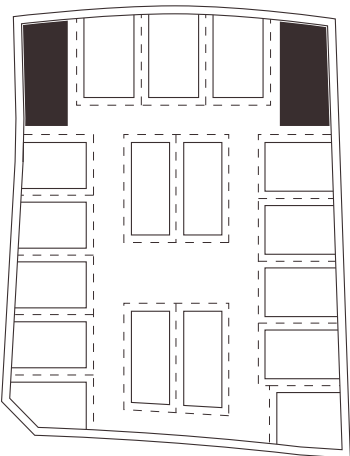
FIRST  
4,230 SQ.FT



SECOND  
4,700 SQ.FT

BUA: 22,262 SQ.FT • PLOT SIZE RANGES FROM 12,986 SQ.FT TO 13,807 SQ.FT

Disclaimer: **(1)** All materials, dimensions, renders and drawings are approximate and for illustration purposes only. **(2)** Information is subject to change without notice. **(3)** Actual areas may vary from the stated area. **(4)** Drawings not to scale. **(5)** The developer reserves the right to make revisions/alterations without any liability whatsoever. **(6)** Units are sold as unfurnished, without furniture, fittings, etc.





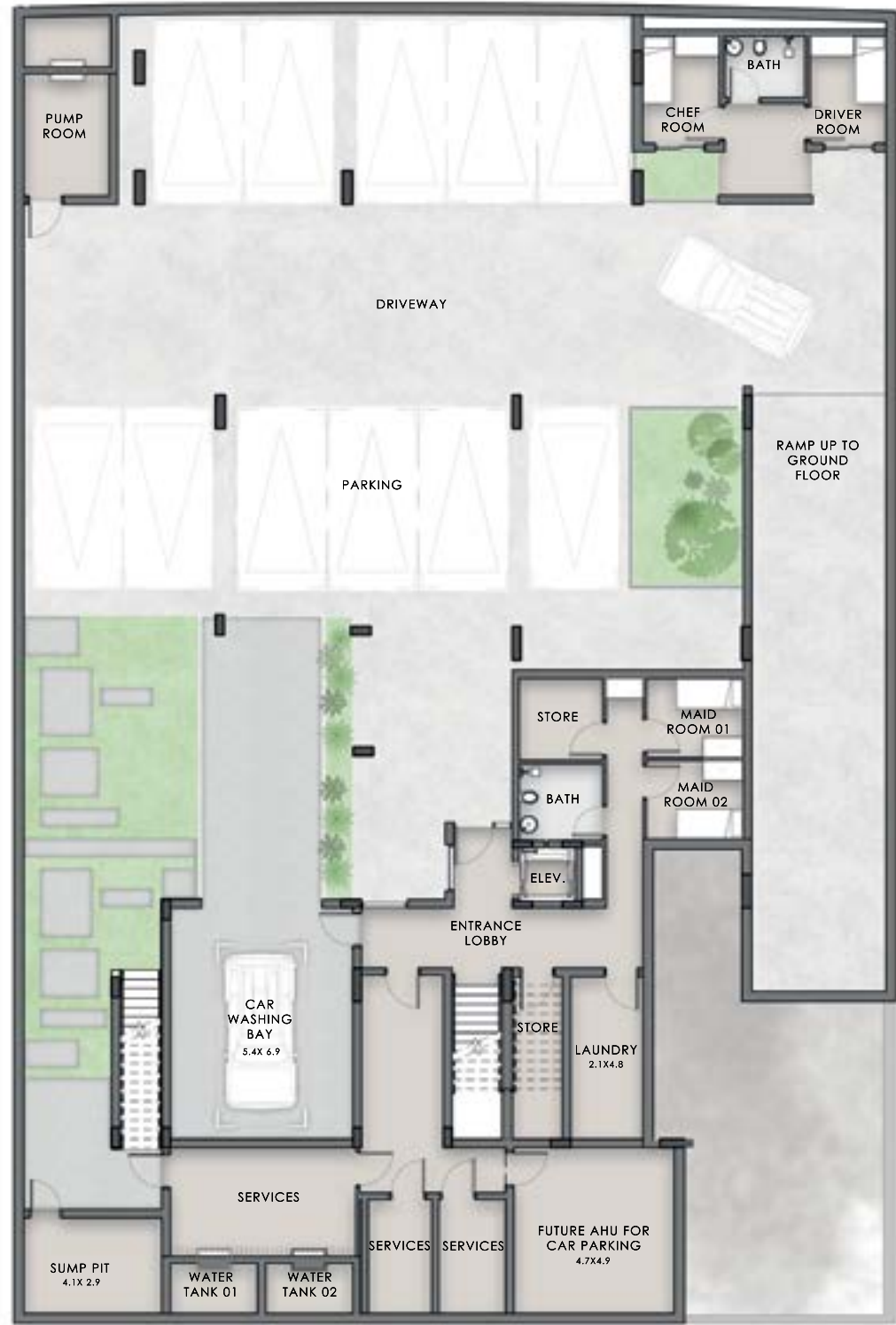
VILLA *type*

TWO

6 BEDROOM

PLOT SIZE RANGES  
FROM 10,739 SQ.FT TO 10,963 SQ.FT





## BASEMENT

9,195 SQ.FT



## GROUND

3,431 SQ.FT



## FIRST

3,981 SQ.FT

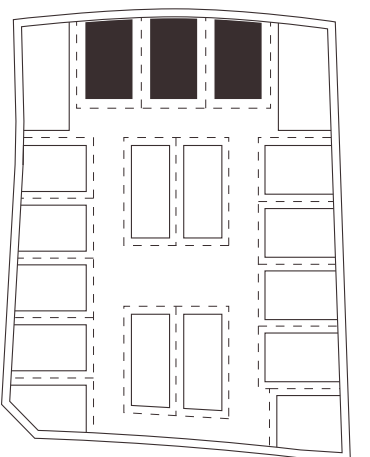


## SECOND

4,270 SQ.FT

BUA: 20,877 SQ.FT • PLOT SIZE RANGES FROM 10,739 SQ.FT TO 10,963 SQ.FT

Disclaimer: **(1)** All materials, dimensions, renders and drawings are approximate and for illustration purposes only. **(2)** Information is subject to change without notice. **(3)** Actual areas may vary from the stated area. **(4)** Drawings not to scale. **(5)** The developer reserves the right to make revisions/alterations without any liability whatsoever. **(6)** Units are sold as unfurnished, without furniture, fittings, etc.





VILLA *type*

THREE

5 BEDROOM

PLOT SIZE RANGES  
FROM 8,501 SQ.FT TO 9,603 SQ.FT





BASEMENT

8,088 SQ.FT

GROUND

2,837 SQ.FT

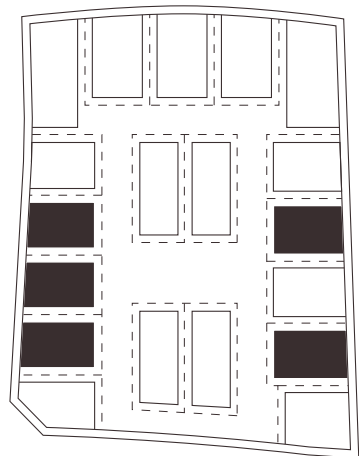
FIRST

3,520 SQ.FT

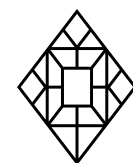
SECOND

4,063 SQ.FT

BUA: 18,508 SQ.FT • PLOT SIZE RANGES FROM 8,501 SQ.FT TO 9,603 SQ.FT



Disclaimer: **(1)** All materials, dimensions, renders and drawings are approximate and for illustration purposes only. **(2)** Information is subject to change without notice. **(3)** Actual areas may vary from the stated area. **(4)** Drawings not to scale. **(5)** The developer reserves the right to make revisions/alterations without any liability whatsoever. **(6)** Units are sold as unfurnished, without furniture, fittings, etc.



VILLA *type*

# FOUR

5 BEDROOM

PLOT SIZE RANGES  
FROM 8,145 SQ.FT TO 9,620 SQ.FT





BASEMENT  
8,287 SQ.FT



GROUND  
2,719 SQ.FT

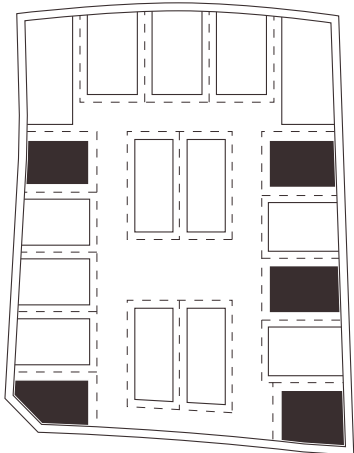


FIRST  
2,846 SQ.FT

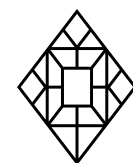


SECOND  
3,160 SQ.FT

BUA: 17,012 SQ.FT • PLOT SIZE RANGES FROM 8,145 SQ.FT TO 9,620 SQ.FT



Disclaimer: **(1)** All materials, dimensions, renders and drawings are approximate and for illustration purposes only. **(2)** Information is subject to change without notice. **(3)** Actual areas may vary from the stated area. **(4)** Drawings not to scale. **(5)** The developer reserves the right to make revisions/alterations without any liability whatsoever. **(6)** Units are sold as unfurnished, without furniture, fittings, etc.



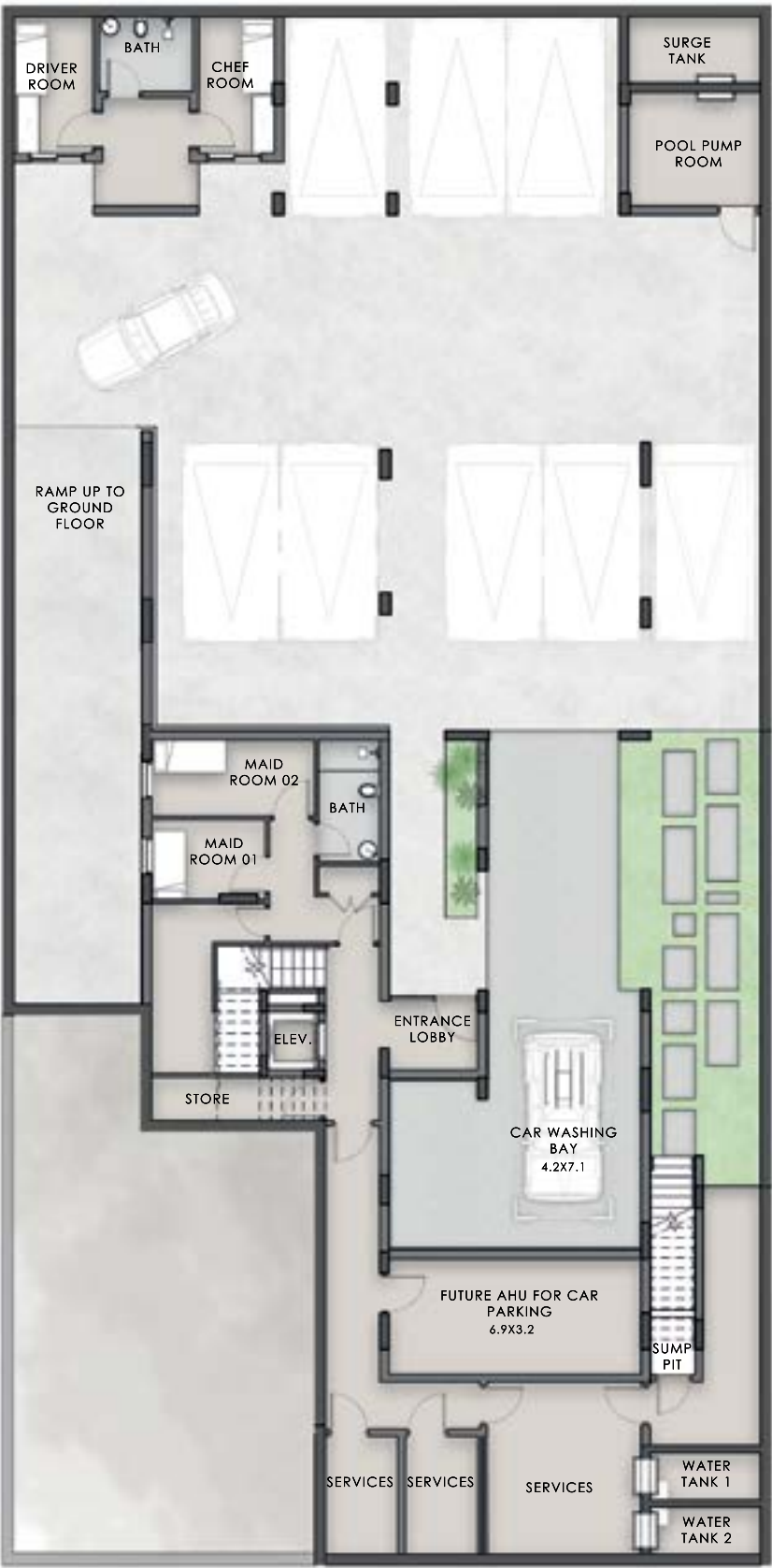
VILLA  
*type*

# FIVE

6 BEDROOM

PLOT SIZE RANGES  
FROM 9,720 SQ.FT TO 10,043 SQ.FT





BASEMENT  
8,038 SQ.FT



GROUND  
2,950 SQ.FT



FIRST  
3,414 SQ.FT



SECOND  
3,518 SQ.FT

BUA: 17,920 SQ.FT • PLOT SIZE RANGES FROM 9,720 SQ.FT TO 10,043 SQ.FT

Disclaimer: **(1)** All materials, dimensions, renders and drawings are approximate and for illustration purposes only. **(2)** Information is subject to change without notice. **(3)** Actual areas may vary from the stated area. **(4)** Drawings not to scale. **(5)** The developer reserves the right to make revisions/alterations without any liability whatsoever. **(6)** Units are sold as unfurnished, without furniture, fittings, etc.

