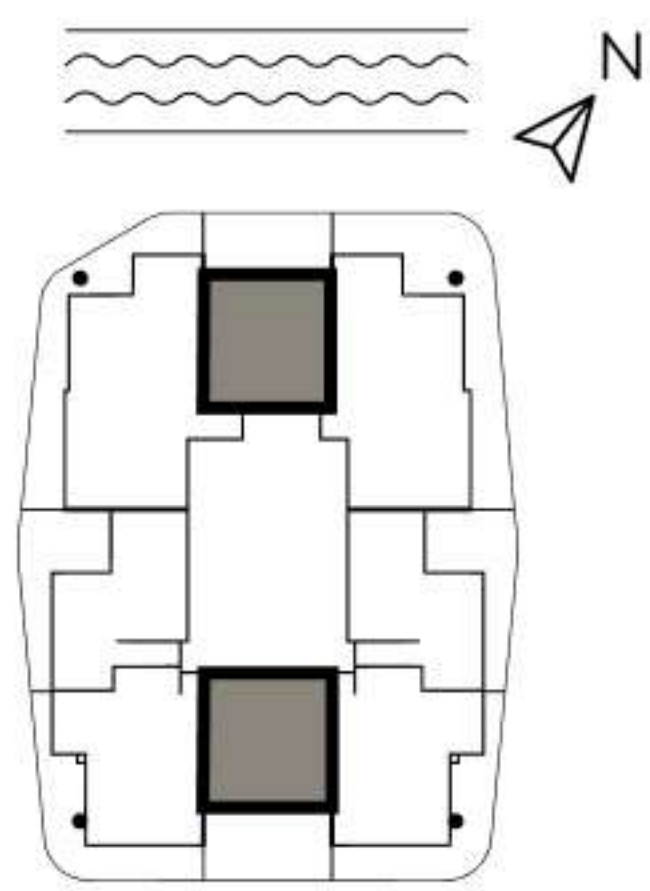


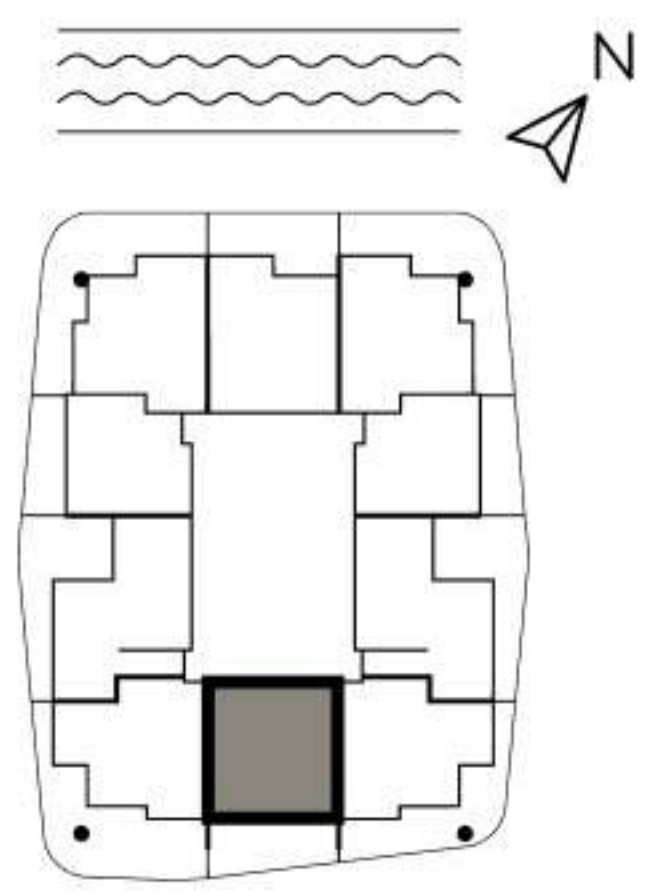
Internal area: 762,89 SQ FT
Total area: 1066,99 SQ FT

1-BEDROOM TYPE A

UNITS:
202, 206, 307, 508, 603, 702, 706, 807, 903, 1008,
1103, 1202, 1206, 1307, 1508, 1603, 1708, 1803



FLOORS:
2, 7, 12



FLOORS:
3, 5, 6, 8, 9, 10, 11,
13, 15, 16, 17, 18



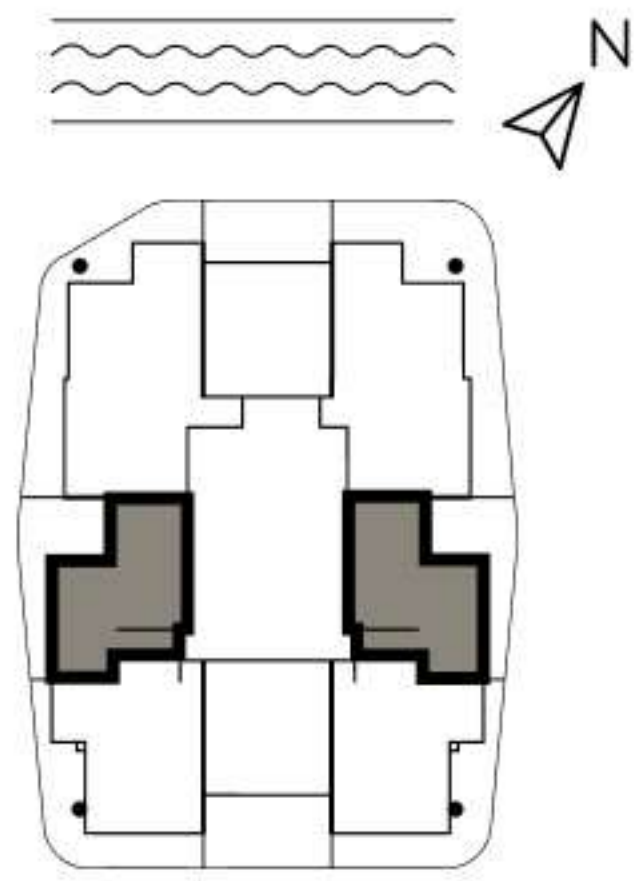
Internal area: 886,46 SQ FT

Total area: 1126,21 SQ FT

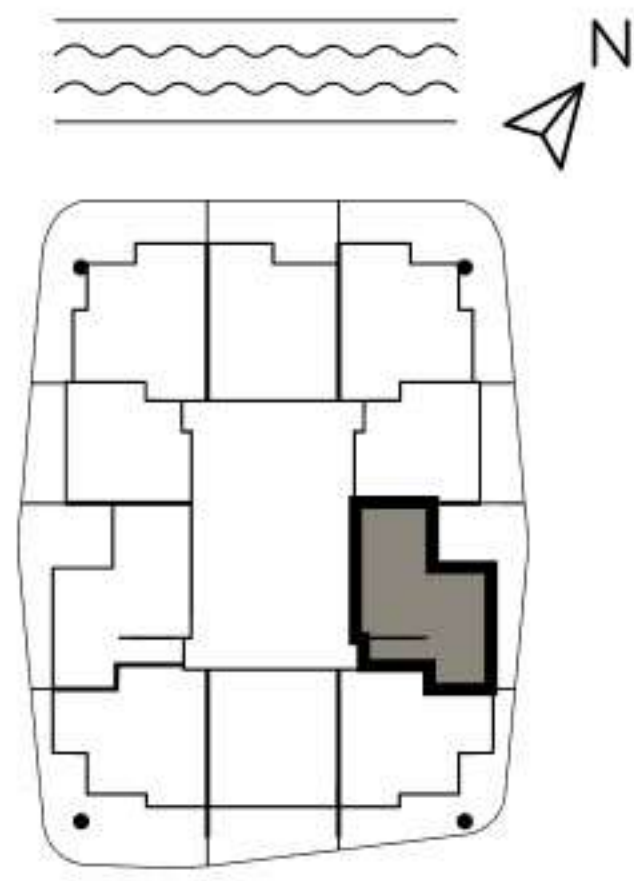
1-BEDROOM TYPE B

UNITS:

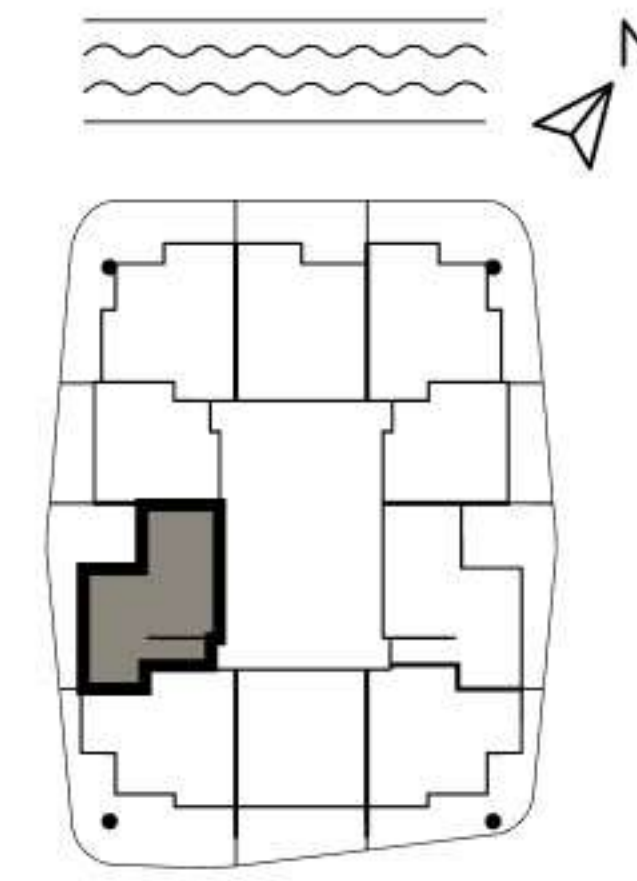
204, 208, 309, 403, 506, 510, 601, 605, 704, 708, 805, 901, 1006, 1010, 1101, 1105, 1204, 1208, 1309, 1403, 1506, 1510, 1601, 1605, 1706, 1710, 1801, 1805



FLOORS:
2, 5, 6, 7, 10, 11,
12, 15, 16, 17, 18



FLOORS:
3, 4, 13, 14



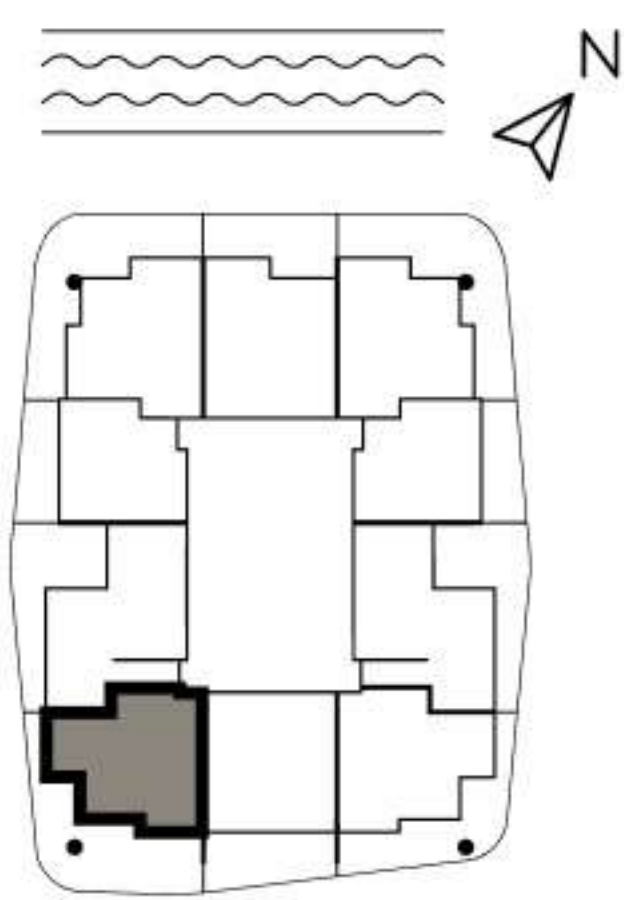
FLOORS:
8, 9



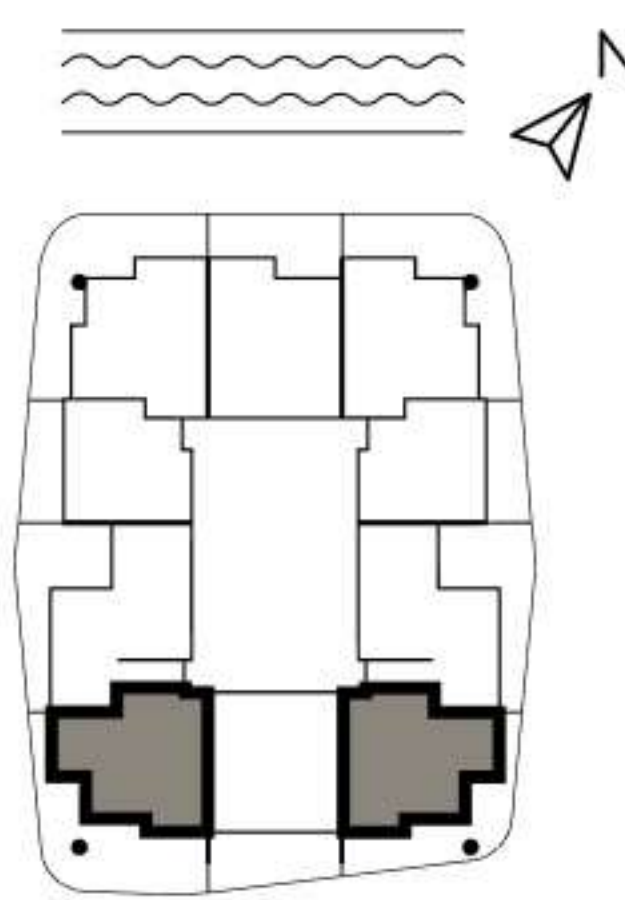
Internal area: 782,86 SQ FT
Total area: 1253,83 SQ FT

1-BEDROOM TYPE C

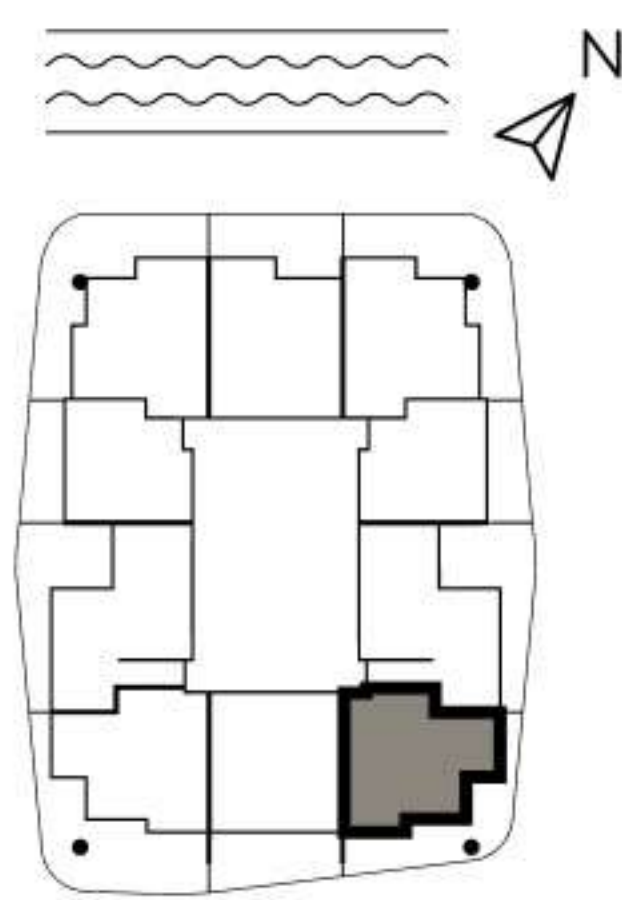
UNITS:
507, 602, 604, 705, 707, 806, 902, 1007, 1009, 1102, 1104, 1205, 1207, 1308,
1402, 1507, 1509, 1602, 1604, 1707, 1709, 1802, 1804



FLOORS:
5, 8, 9



FLOORS:
6, 7, 10, 11, 12,
15, 16, 17, 18



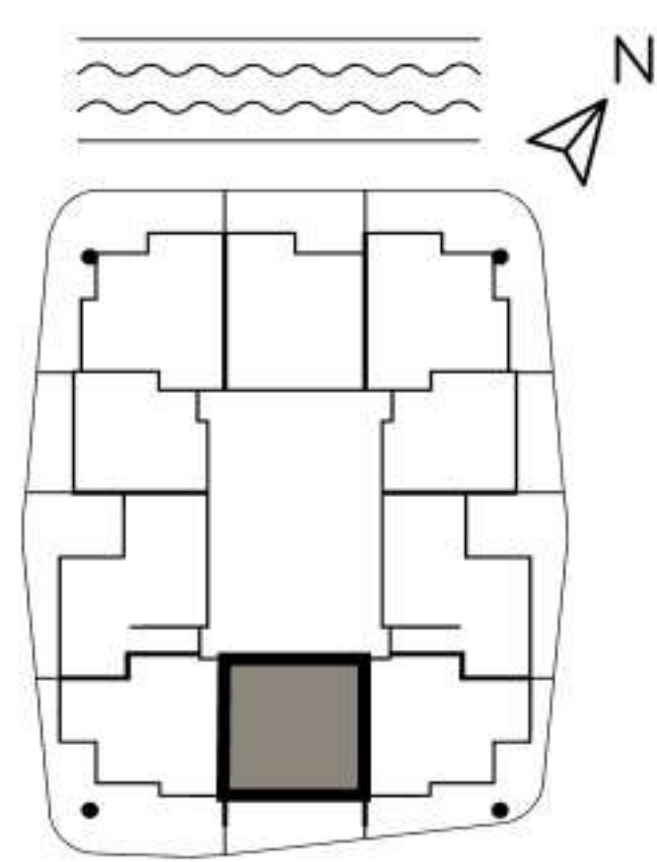
FLOORS:
13, 14



Internal area: 758,96 SQ FT
Total area: 1114,71 SQ FT

1-BEDROOM TYPE D

UNITS:
401, 1401



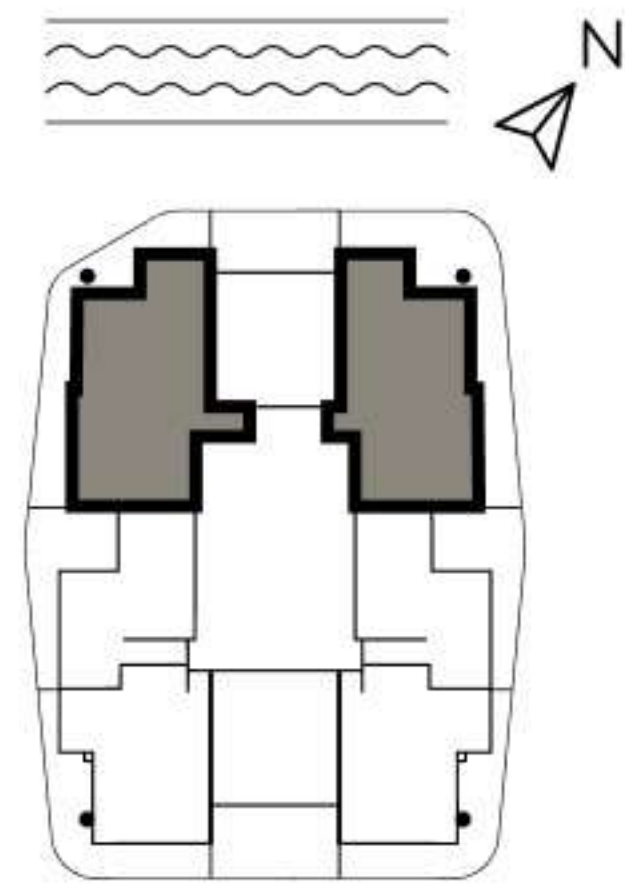
FLOORS:
4, 14



Internal area: 1487,41 SQ FT
Total area: 2088,81 SQ FT

2-BEDROOM TYPE A

UNITS:
201, 203, 701, 703,
1201, 1203



FLOORS:
2, 7, 12



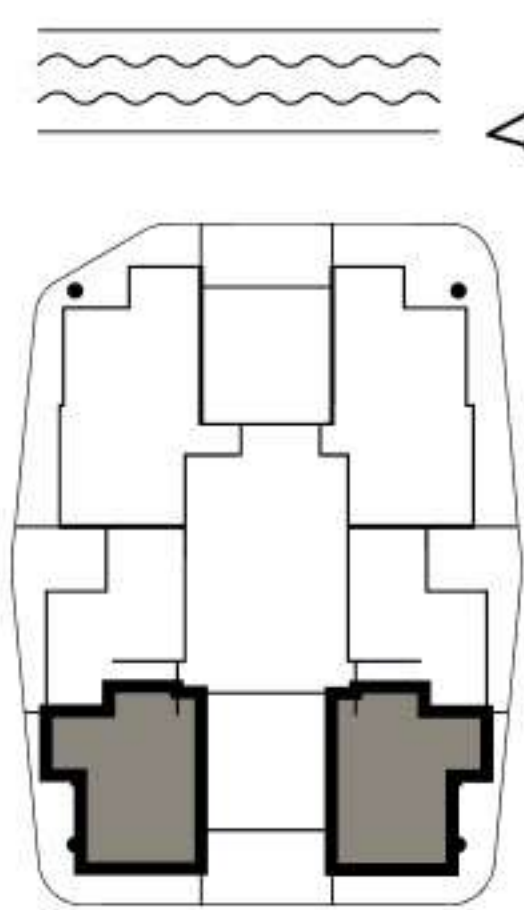
— AX —
CAPITAL

All drawings and sizes are approximate. Drawings are not to scale and can be changed without notice. The developer reserves the right to make changes. The blocks are taken from a typical building floor, and the dimensions of the columns may vary depending on the floor level. The furniture shown are for informational purposes only.

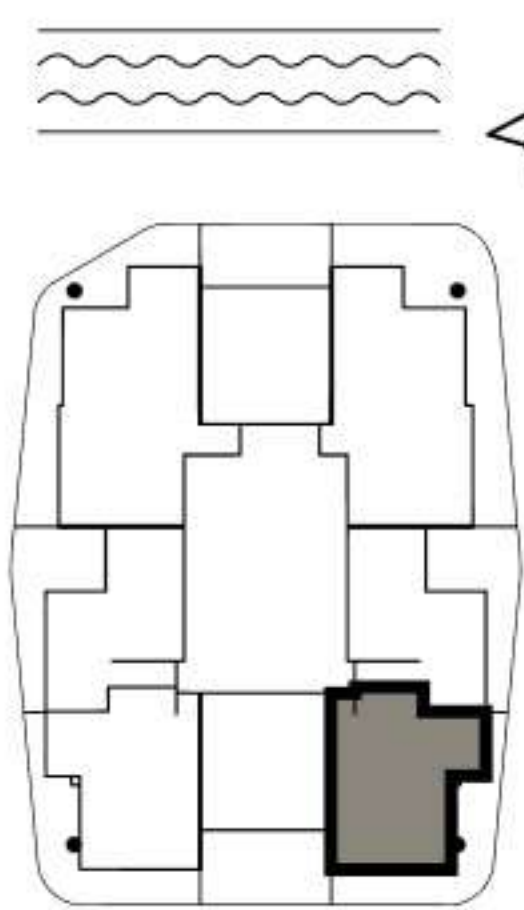
Internal area: 1038,55 SQ FT
Total area: 1456,20 SQ FT

2-BEDROOM TYPE B

UNITS:
205, 207, 308, 402, 509



FLOOR:
2



FLOORS:
3, 4, 5

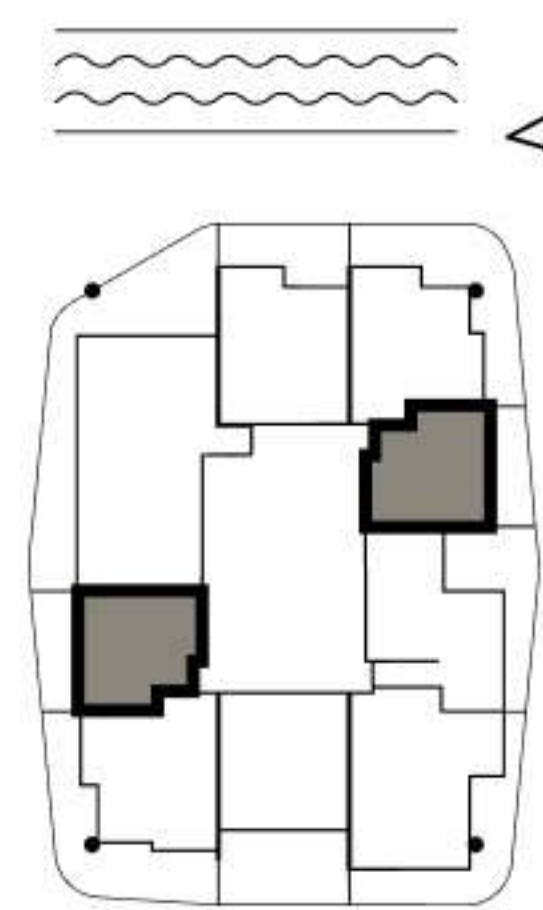


Internal area: 1115,78 SQ FT
Total area: 1469,75 SQ FT

1-BEDROOM DUPLEX TYPE A

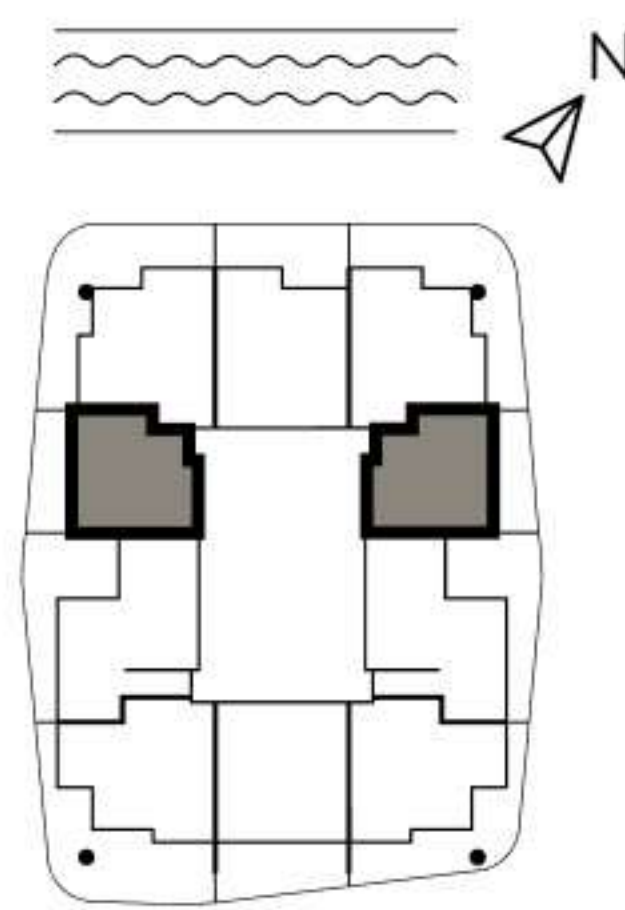
UNITS:

301, 305, 501, 505, 804, 809, 1001, 1005,
1301, 1305, 1501, 1505, 1701, 1705

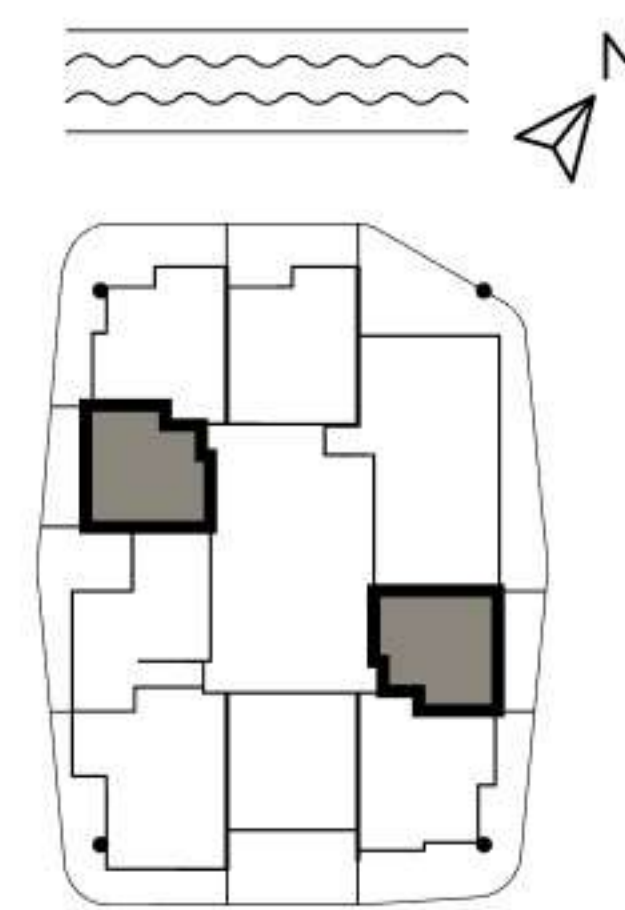


FLOORS:
3-4, 13-14

LOWER LEVEL



FLOORS:
5-6, 10-11,
15-16, 17-18



FLOORS:
8-9

UPPER LEVEL



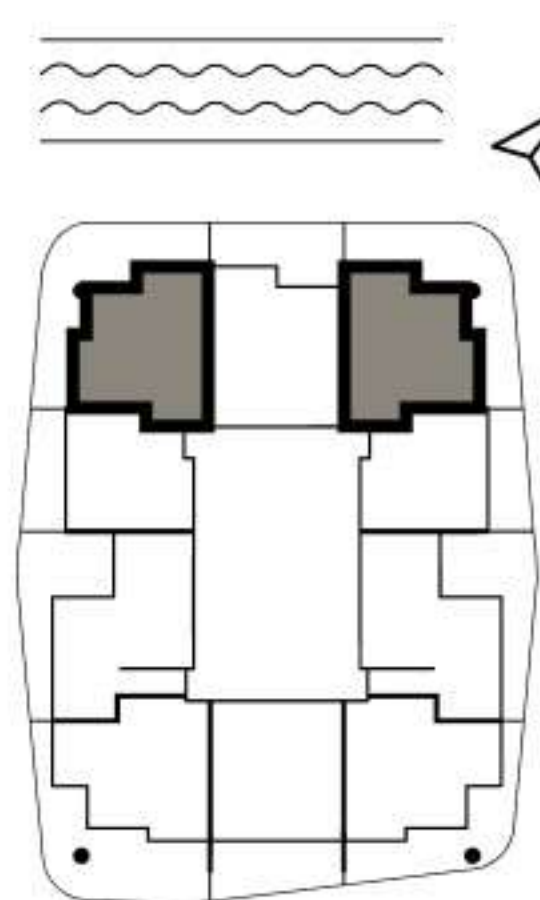
— AX —
CAPITAL

All drawings and sizes are approximate. Drawings are not to scale and can be changed without notice. The developer reserves the right to make changes. The blocks are taken from a typical building floor, and the dimensions of the columns may vary depending on the floor level. The furniture shown are for informational purposes only.

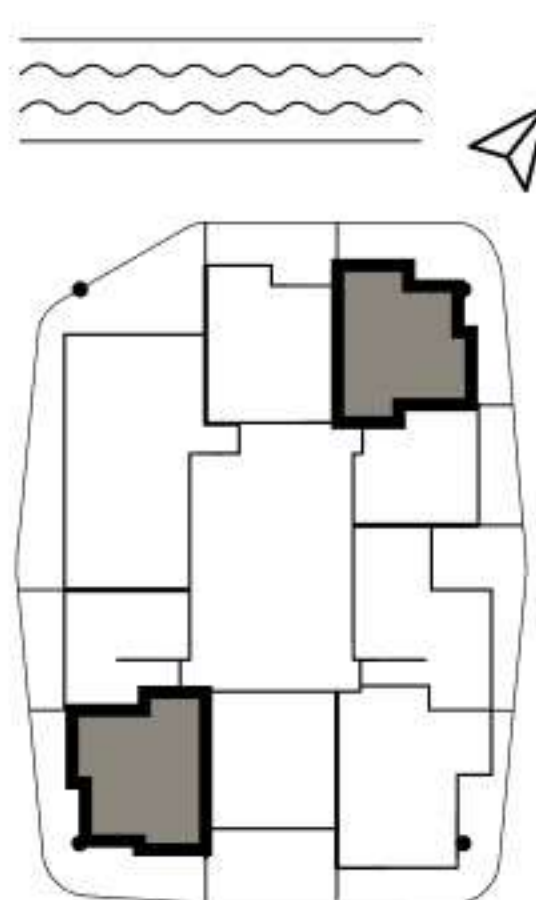
Internal area: 1656,91 SQ FT
Total area: 2357,95 SQ FT

2-BEDROOM DUPLEX TYPE A

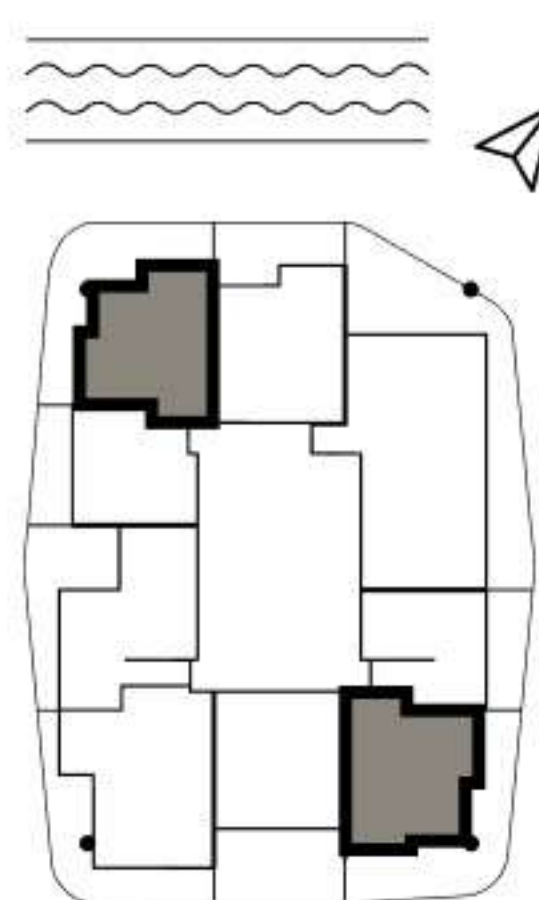
UNITS:
302, 306, 502, 504, 803, 808, 1002, 1004,
1306, 1302, 1502, 1504, 1702, 1704



FLOORS
5-6, 10-11,
15-16, 17-18



FLOORS
3-4, 13-14

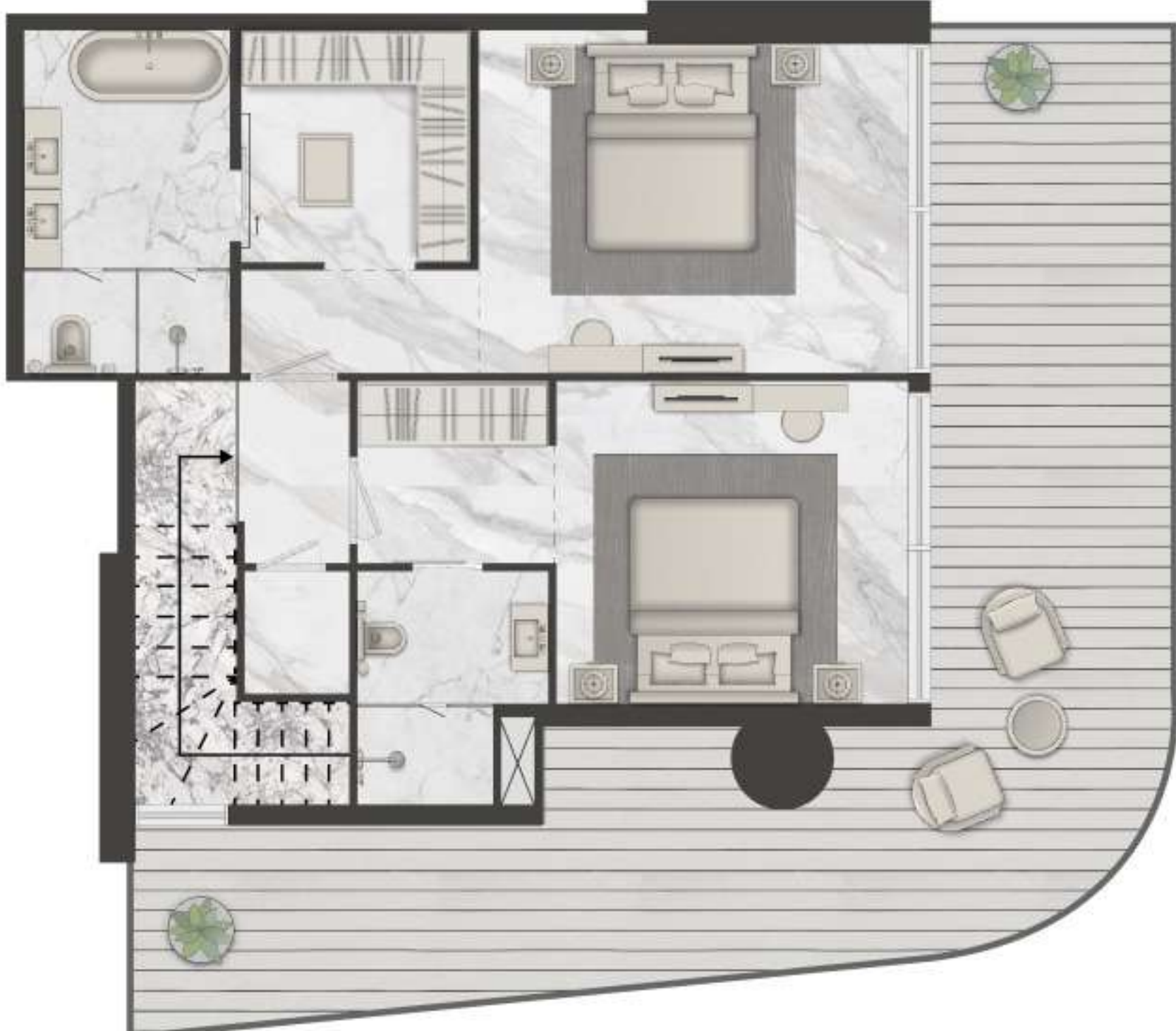


FLOORS
8-9

LOWER LEVEL



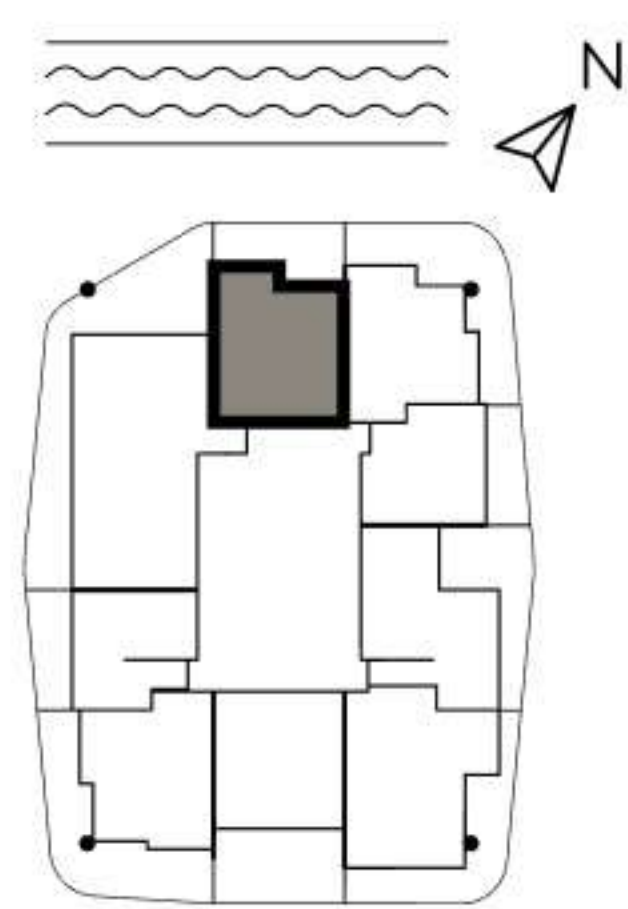
UPPER LEVEL



Internal area: 1660,11 SQ FT
Total area: 2093,96 SQ FT

2-BEDROOM DUPLEX TYPE B

UNITS:
303, 503, 802, 1003, 1303, 1503, 1703

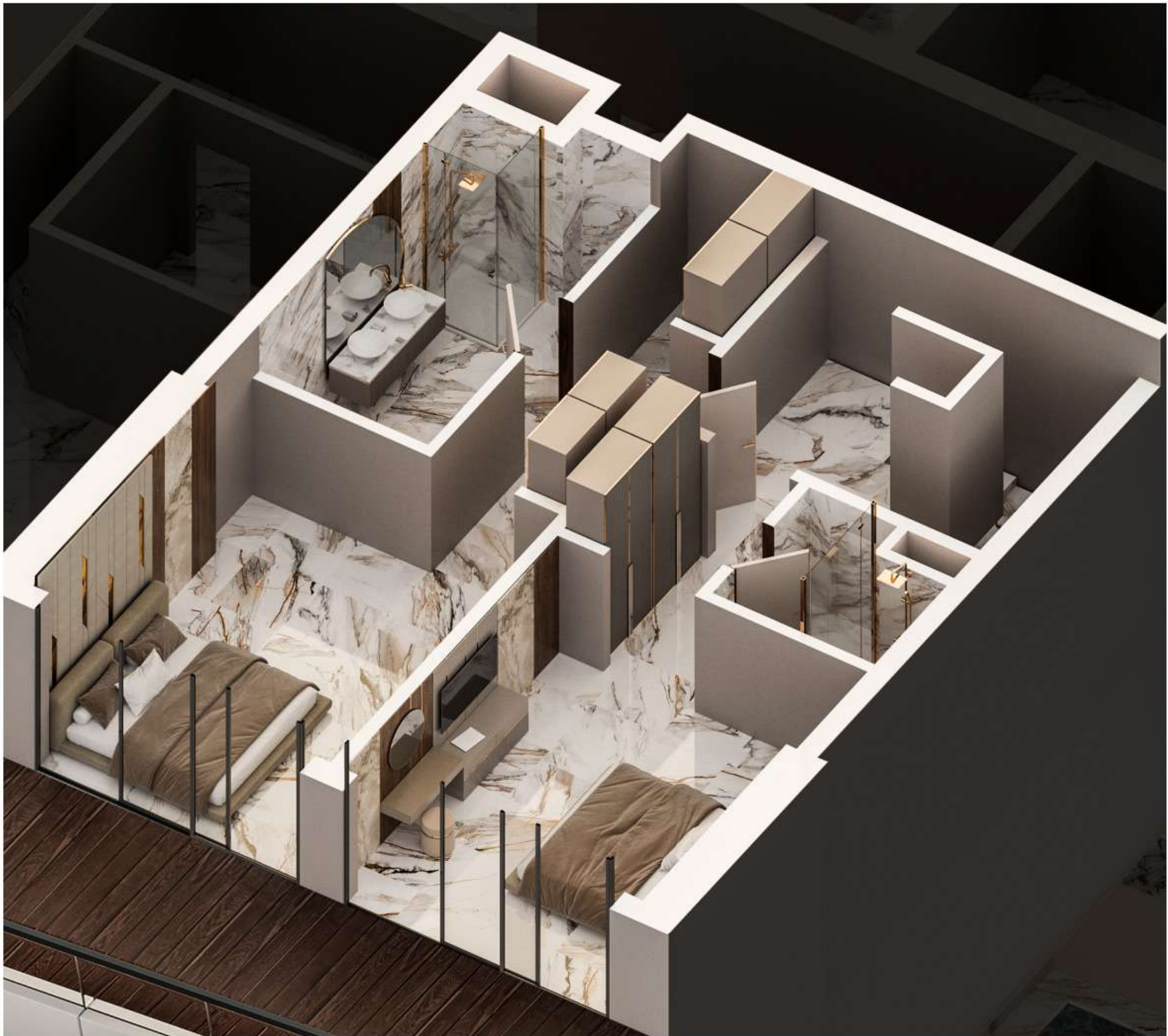


FLOORS
3-4, 5-6, 8-9, 10-11,
13-14, 15-16, 17-18

LOWER LEVEL



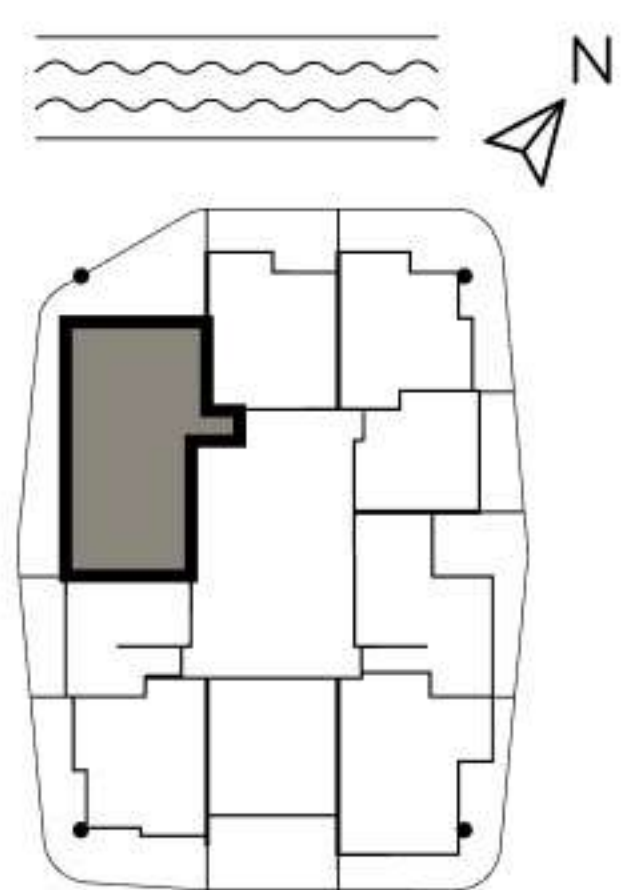
UPPER LEVEL



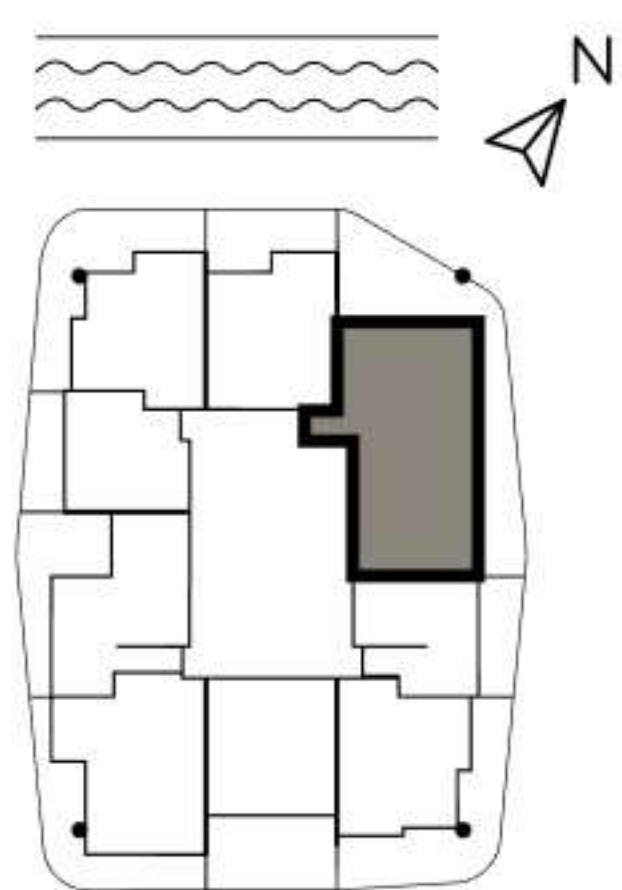
Internal area: 2681,66 SQ FT
Total area: 3817,63 SQ FT

3-BEDROOM DUPLEX TYPE A

UNITS:
304, 801, 1304

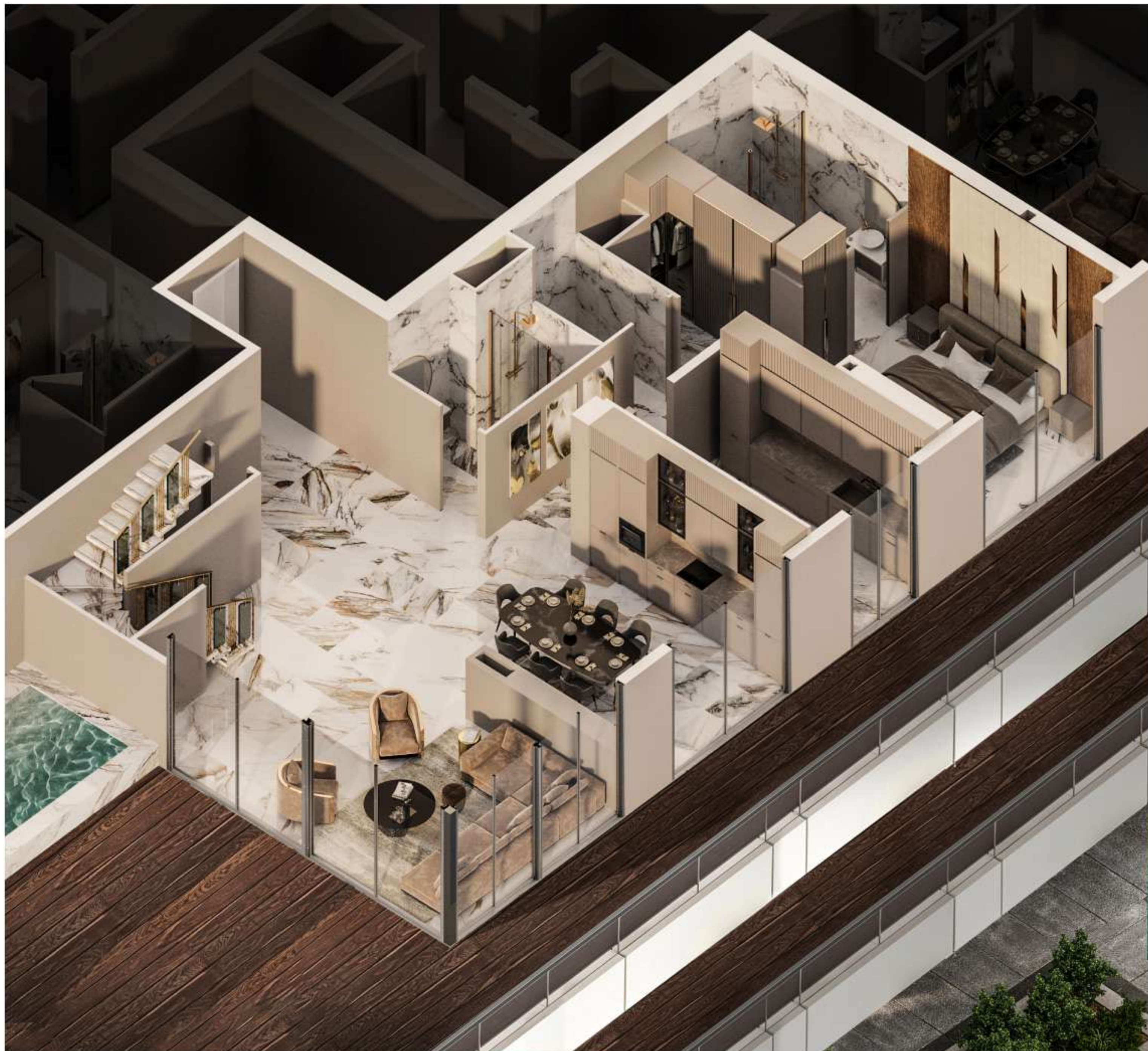


FLOORS
3-4, 13-14



FLOORS
8-9

LOWER LEVEL



UPPER LEVEL



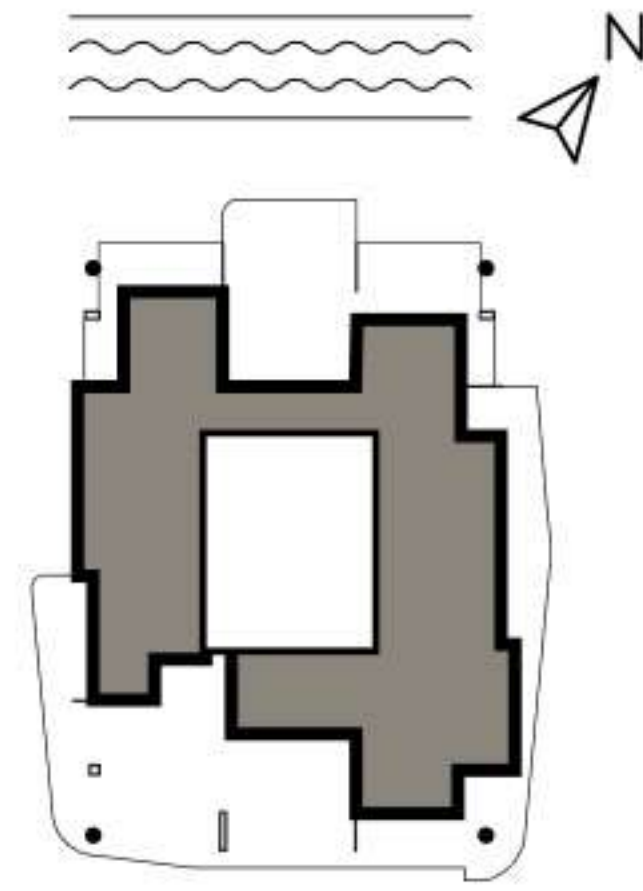
Internal area: 6070,62 SQ FT

Total area: 16788,67 SQ FT

4-BEDROOM TYPE A

UNIT:

1901



FLOOR:

19

