

# AQUA ARC

BY BNW DEVELOPMENTS

AL MARJAN ISLAND









# DESIGN PHILOSOPHY

## BY THE ARCHITECT

Influenced by the breathtaking landscape of Ras Al Khaimah and the majestic Jais Mountain, the architectural concept emulates the organic forms of natural peaks and valleys, seamlessly integrating two interconnected blocks to sculpt a serene valley-like oasis. The podium roof, reminiscent of mountain caverns, boasts enchanting apertures facilitating cascading water installations and al fresco pursuits. Reflecting the undulating rhythm of ocean waves, the balconies harmonize the essence of mountain grandeur with the allure of the sea. Each building boasts a double-height lobby seamlessly integrated with lush landscaping, fostering a sense of harmony and tranquillity. The pinnacle of luxury awaits at penthouses with 360 views.



# YOUR ULTIMATE LUXURY ESCAPE

Experience the pinnacle of luxury at Aqua Arc, situated in the emerging vibrant hub of Al Marjan Island in Ras Al Khaimah. Aqua Arc is a one-of-a-kind, water-inspired architectural masterpiece, that redefines luxury living and ultimate leisure, offering an unmatched experience amidst serene landscapes and azure waters.

This exquisite sanctuary exemplifies impeccable design and it's designed to elevate your lifestyle, ensuring an extraordinary journey towards timeless elegance and sophistication.











# A SERENE OASIS

## AWAITS YOUR ARRIVAL

Embark on a journey where coastal bliss meets contemporary luxury at Aqua Arc on Al Marjan Island. Here, modern sophistication harmonizes with the tranquil sea melody. Awaken to waves caressing the shore, enjoying panoramic azure vistas from your exclusive balcony sanctuary. Discover refined coastal living at its finest, where every detail ensures elegance and tranquillity, offering an exquisite lifestyle experience.



Beach Access



Walking Trails



BBQ Area









# THE PINNACLE OF LUXURY LIVING









# UNPARALLELED

## ELEGANCE

Aqua Arc is a sanctuary where luxury meets tranquillity, and every detail is crafted with intention and purpose. Inspired by the timeless allure of the sea, the residences boast awe-inspiring wavelike balconies, echoing the elegance of coastal living. Premium units feature meticulously designed private pools on expansive terraces, offering exclusive retreats with sweeping vistas of azure waters. Aqua Arc redefines the art of seaside living, where every moment is an ode to the pinnacle of opulence.



Seaside View



Amphitheatre



Pool on the terrace\*

\*Limited edition premium units only.









# WHERE DREAMS

RESIDE



① Al Marjan Island Beach Access

② Al Marjan Island Boulevard

③ Al Marjan Island Resort & Spa

④ Al Hamra Mall

⑤ Al Hamra Golf Club

⑥ Saudi German Hospital

⑦ Wynn Resorts

⑧ Rixos Bab-al-Bahr Resort

⑨ Hampton by Hilton Hotel

⑩ DoubleTree by Hilton Resort & Spa

⑪ Radisson Resort

⑫ Mövenpick Resort







# A PARADISE CRAFTED TO PERFECTION

Experience the pinnacle of coastal living at Aqua Arc, an unparalleled masterpiece where the tranquility of coastal living meets the vibrancy of urban sophistication, creating an oasis of serenity amidst the dynamic energy of the Emirates. With its strategic location and unmatched attention to detail, Aqua Arc offers a rare opportunity to embrace the quintessential luxury lifestyle in one of the most coveted destinations in the world.



Platinum Gym



Kids Splash Pad



Steam & Sauna









FIRST-CLASS  
FACILITIES









# EXQUISITE SOPHISTICATION

Every element of these extraordinary residences is meticulously curated to ensure a seamless blend of timeless quality and contemporary allure. From the moment you step inside, you are greeted by impeccable craftsmanship, luxurious finishes, and spacious layouts designed to exceed the most discerning standards. Immerse yourself in a world of unparalleled refinement and comfort, where every detail has been thoughtfully considered to elevate your living experience.



Panoramic View



Ultra Luxury Living



Attention to Detail









LAVISH INDULGENCE  
UNLOCKED





# YOUR GATEWAY TO PARADISE

Aqua Arc epitomizes the essence of refined luxury amidst the tranquil shores of Al Marjan Island, Ras Al Khaimah. Every detail, meticulously crafted from sweeping architectural lines to bespoke amenities, exudes unparalleled sophistication and opulence. Set against the breathtaking backdrop of Ras Al Khaimah's pristine coastline, Aqua Arc stands as a beacon of timeless elegance, inviting guests to immerse themselves in a world where luxury transcends boundaries.



Rooftop Pool



Recreational Area

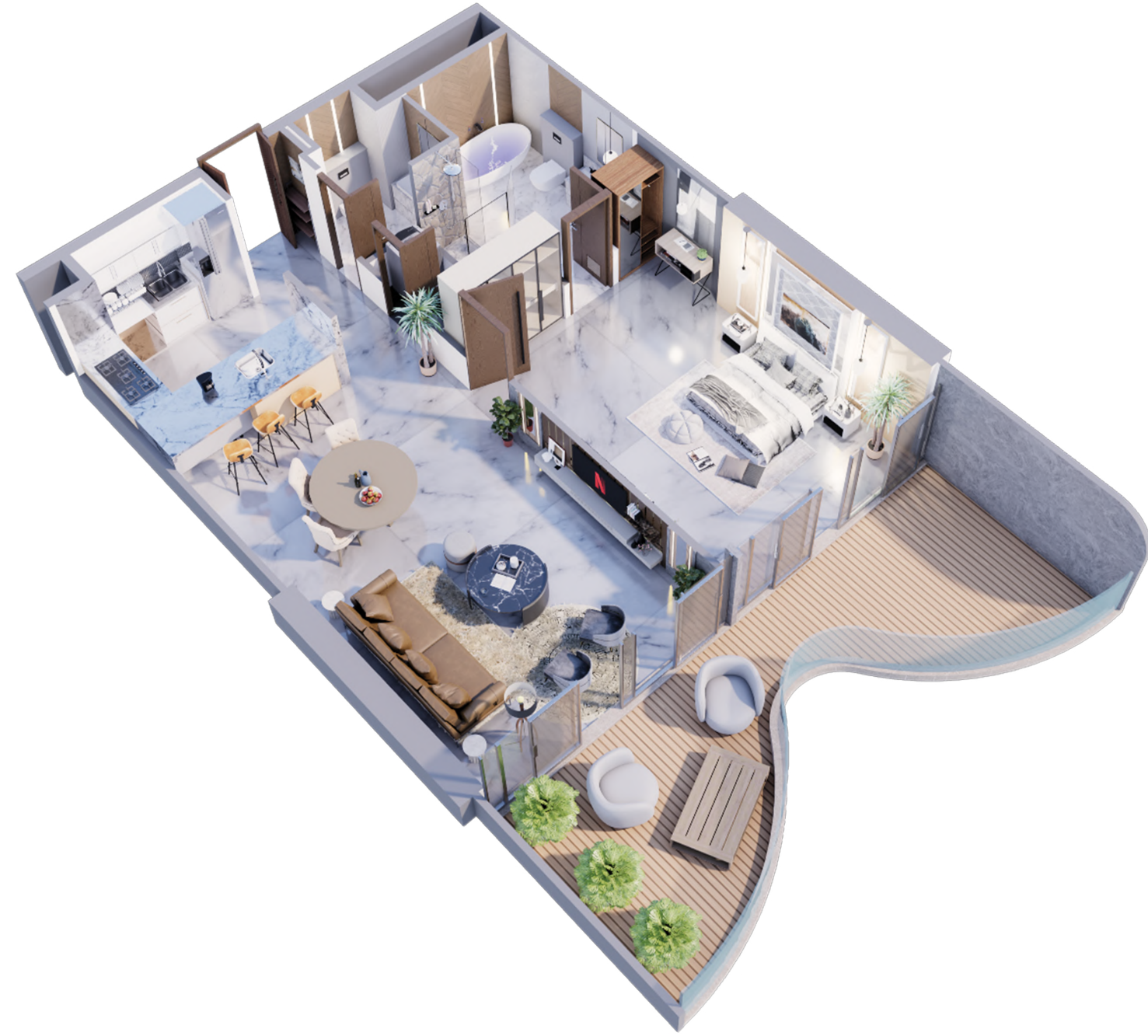
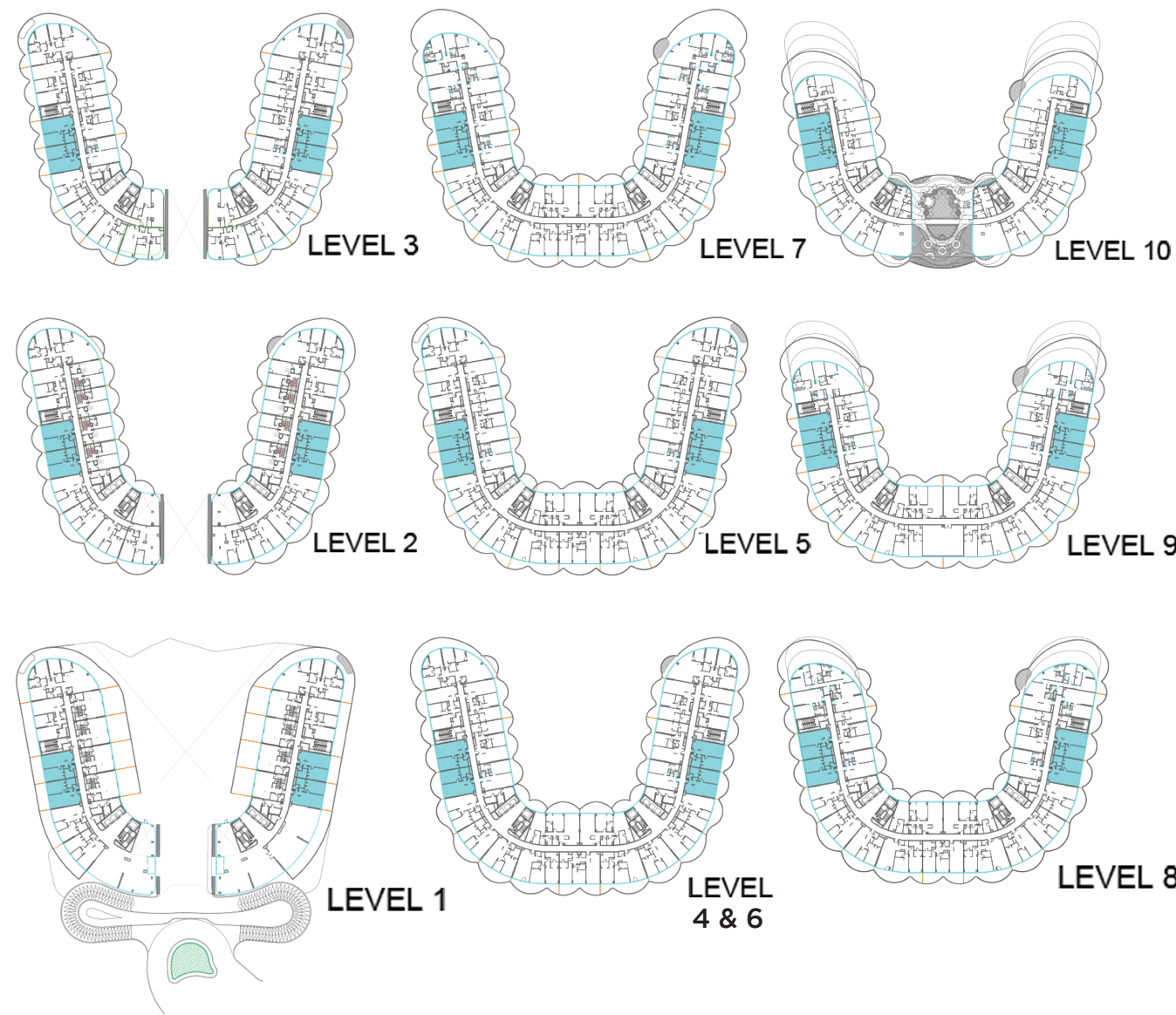


Luxurious Landscaping



# UNIT PLANS





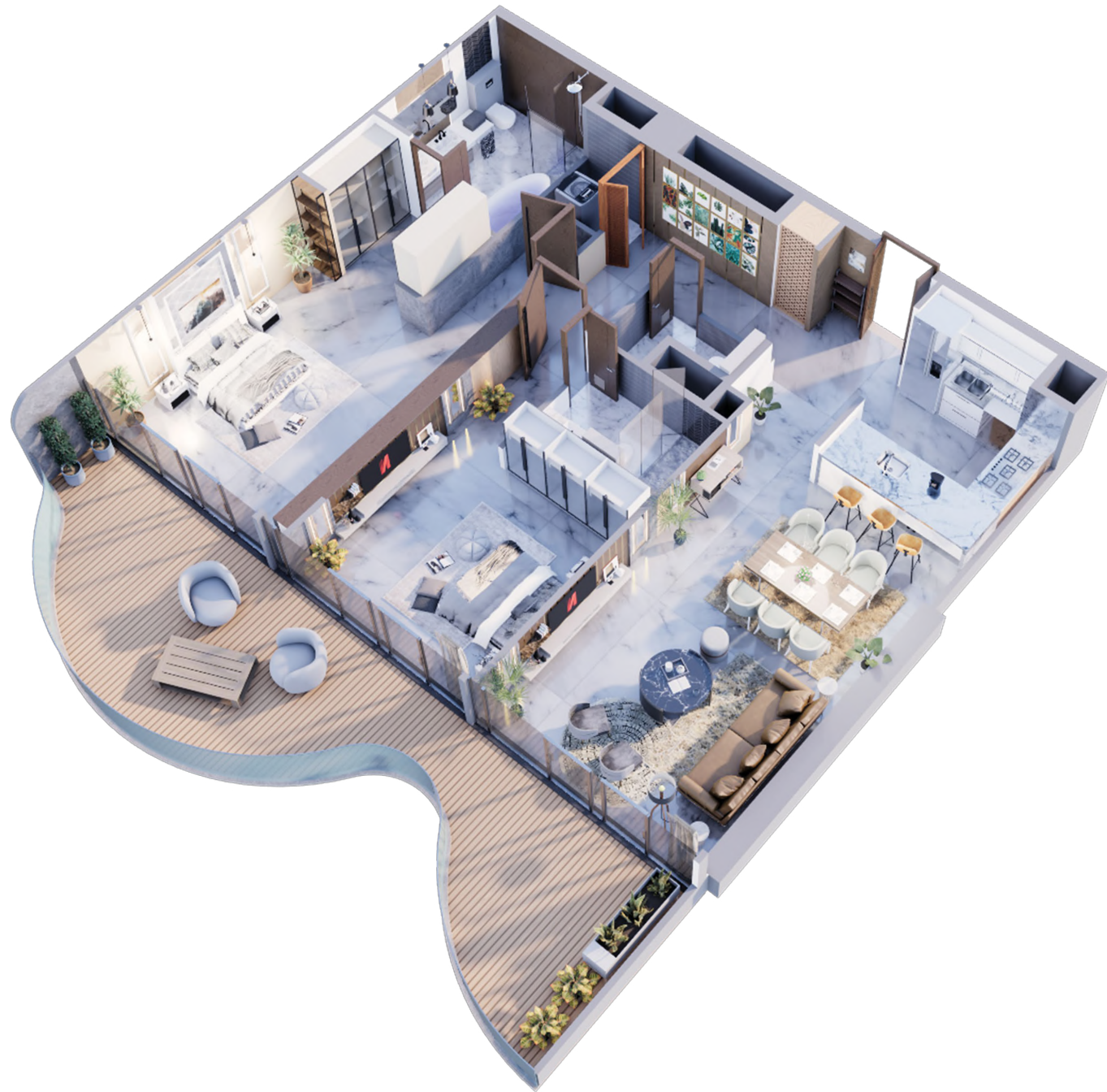
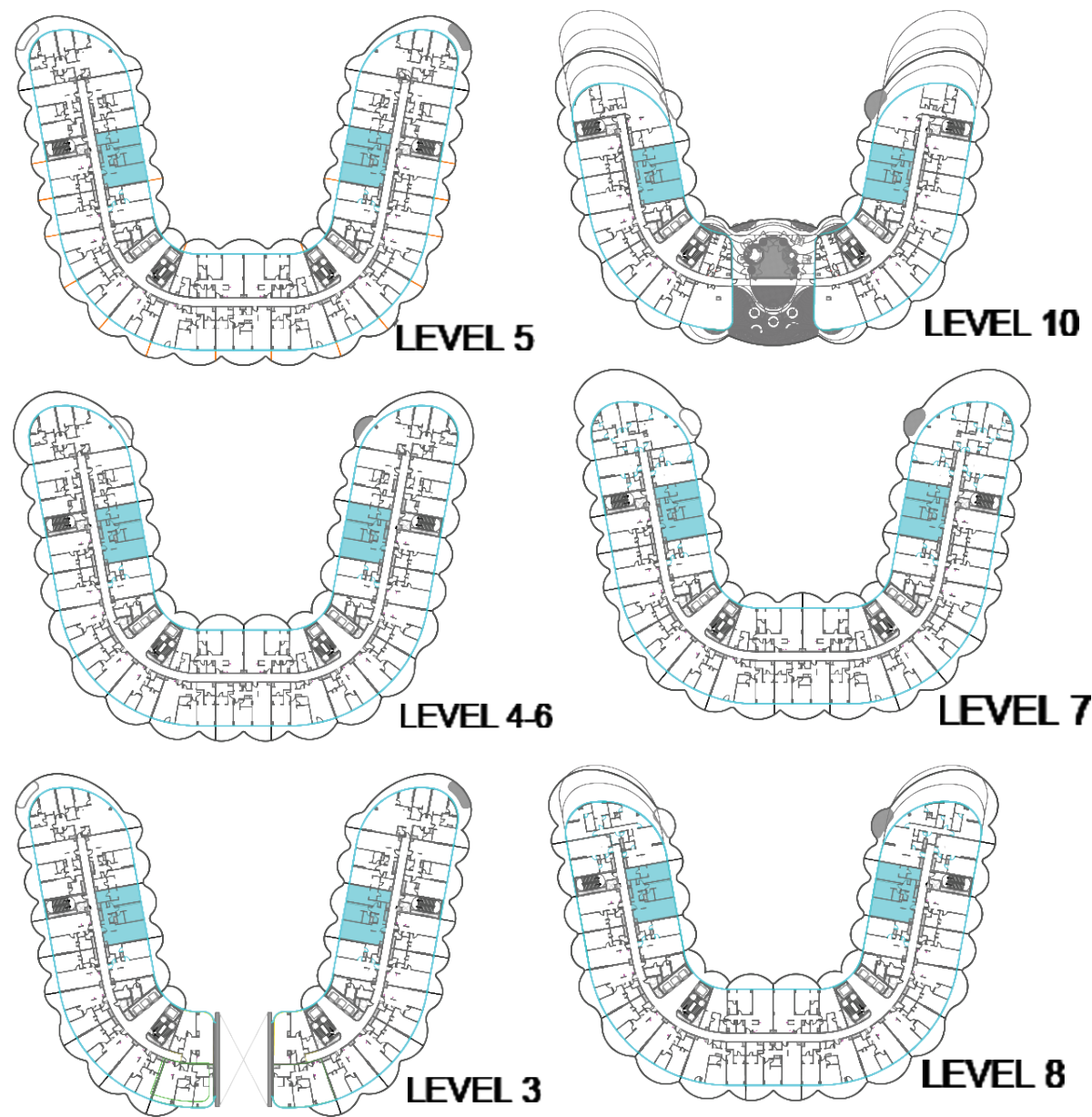
# 1 BEDROOM

## TYPE A

1	KITCHEN	3m x 2.9m
2	LIVING	6.6m x 4.0m
3	BALCONY	MIN. 1m wide
4	BEDROOM	3.8m x 5.4m
5	BATH	2.9m x 2.9m
6	PWD ROOM	1.8m x 1.8m
7	LAUNDRY	0.9m x 1.6m

	From	To
Suite Area	850.78sq. ft.	861.22sq. ft.
Balcony Area	241.33 sq. ft.	310.11 sq. ft.
Total Area	1092.11 sq. ft.	1171.33 sq. ft.





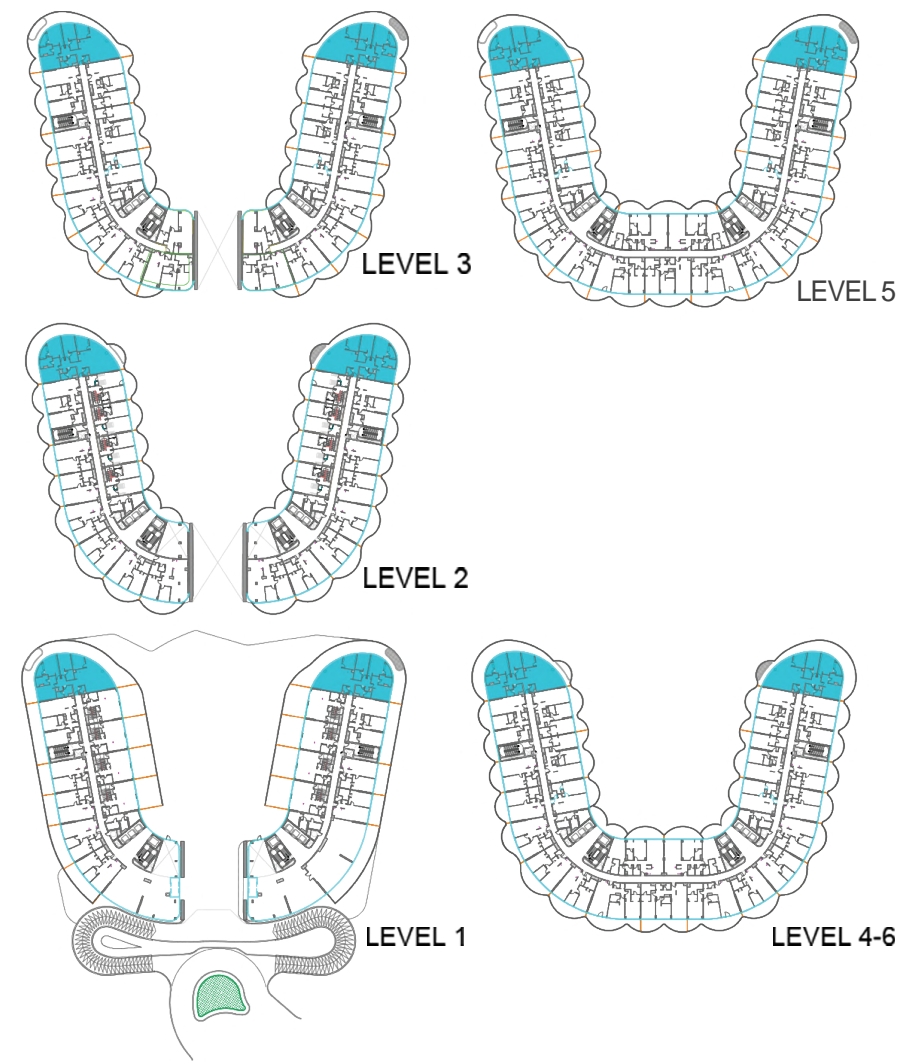
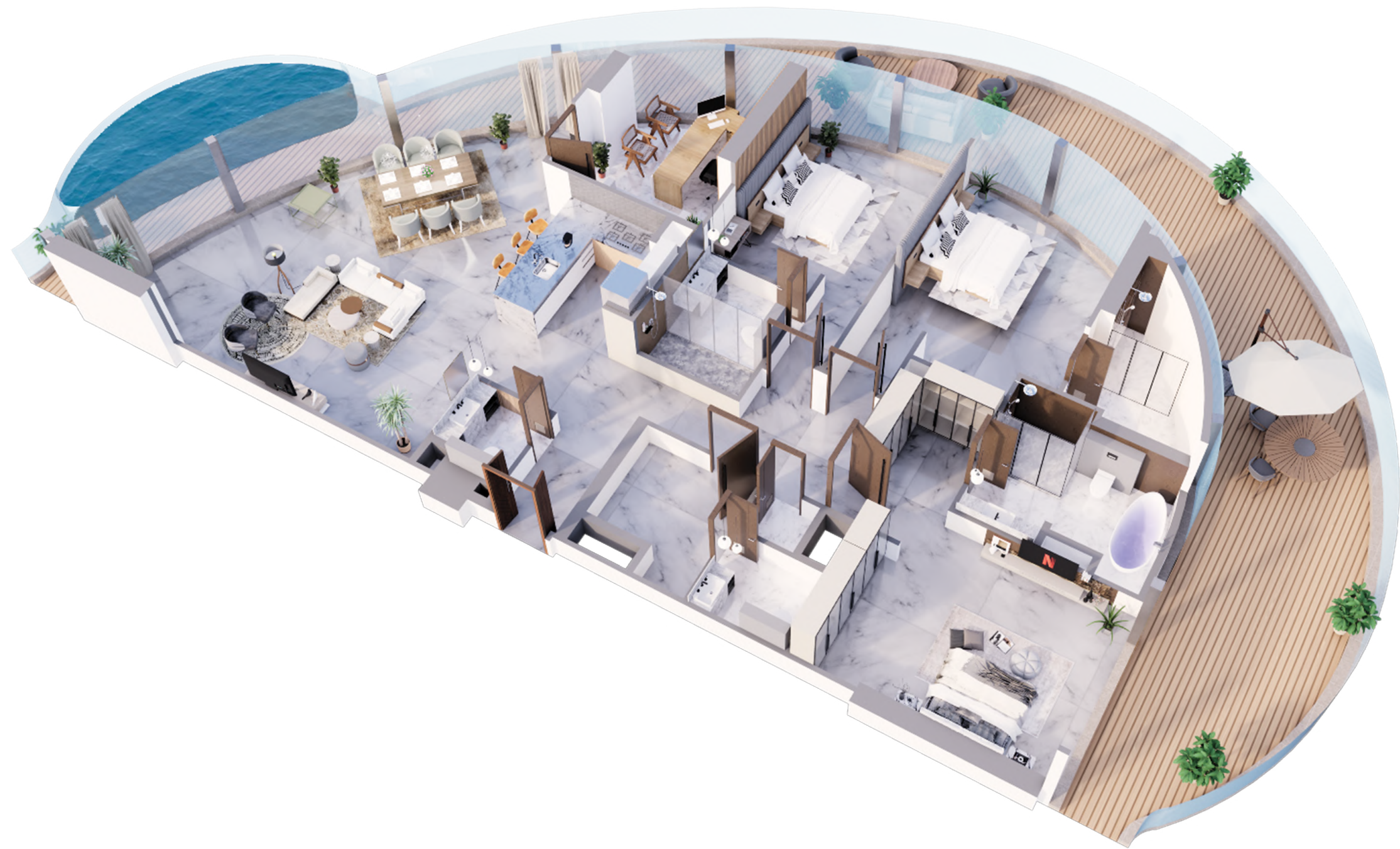
# 2 BEDROOM

## TYPE C

1	KITCHEN	2.9m x 3.1m
2	LIVING	4.3m x 6.5m
3	BALCONY	MIN 1.6m wide
4	BEDROOM	4.2m x 3.5m
5	BATH	2.6m x 1.6m
6	BEDROOM	3.8m x 4.7m
7	BATH	2.5m x 2.9m
8	PWD ROOM	1.9m x 0.9m
9	LAUNDRY	1.2m x 1.1m

	From	To
Suite Area	1267.34 sq. ft.	1281.34sq. ft.
Balcony Area	343.48 sq. ft.	350.47sq. ft.
Total Area	1610.82sq. ft.	1631.81sq. ft.





	From	To
Suite Area	2135.02 sq. ft.	2135.56 sq. ft.
Balcony Area	1140.87 sq. ft.	1644.19 sq. ft.
Total Area	3275.89 sq. ft.	3779.75 sq. ft.

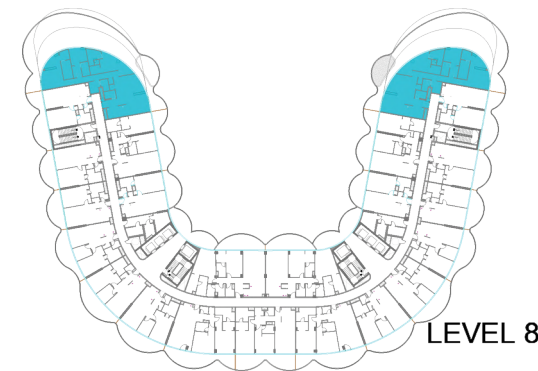
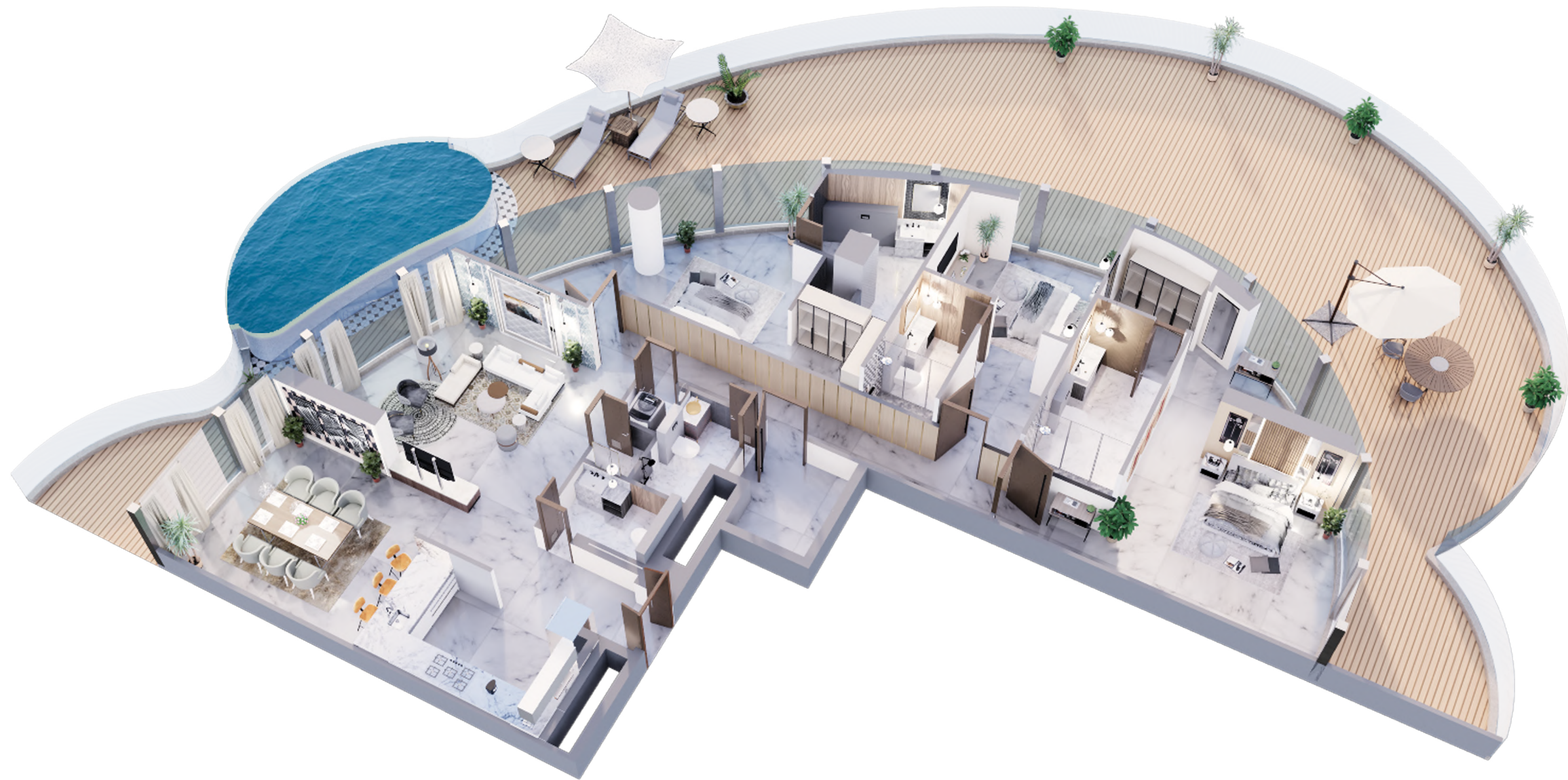
# 3 BEDROOM

## TYPE A

1	KITCHEN	3.6m x 2.5m
2	LIVING	8m x 9.5m
3	BALCONY	MIN.1.2m wide
4	STUDY	3.5m x 4.2m
5	BEDROOM	3.4m x 4.2m
6	BATH	2.2m x 2.7m
7	PWD ROOM	1.6m x 2.1m
8	BEDROOM	3.7m x 3.7m
9	BATH	2.6m x 3.0m
10	BATH	2.5m x 3.4m
11	BEDROOM	5.0m x 3.9m
12	STORE	2.4m x 2.8m
13	LAUNDRY	1.1m x 0.9m
14	BATH	1.9m x 1.6m
15	PRIVATE POOL	

\*All images used for illustrative purposes only and do not represent the actual size, feature specificatons, fitting, and furnishing. The developer reserves the right to make revision / alterations, at its absolute discretion, without any liability whatsoever.





	From	To
Suite Area	2081.09 sq. ft.	2082.31 sq. ft.
Balcony Area	2353.53 sq. ft.	2353.31 sq. ft.
Total Area	4434.62 sq. ft.	4434.62 sq. ft.

# 3 BEDROOM

## TYPE C

1	KITCHEN	4.2m x 2.4m
2	DINING	4.7m x 3.9m
3	LIVING	6m x 4m
4	LAUNDRY	1.2m x 1m
5	PWD ROOM	2.3m x 1.5m
6	BEDROOM	6.7m x 4.4m
7	BATH	1.2m x 2.5m
8	BATH	3.6m x 2.9m
9	BEDROOM	3.5m x 3.1m
10	BATH	1.6m x 2.9m
11	BEDROOM	4.7m x 7.2m
12	BATH	2m x 3.9m
13	STORE	1.7m x 2.5m
14	BALCONY	MIN. 1.54m wide
15	PRIVATE POOL	





LEVEL 12

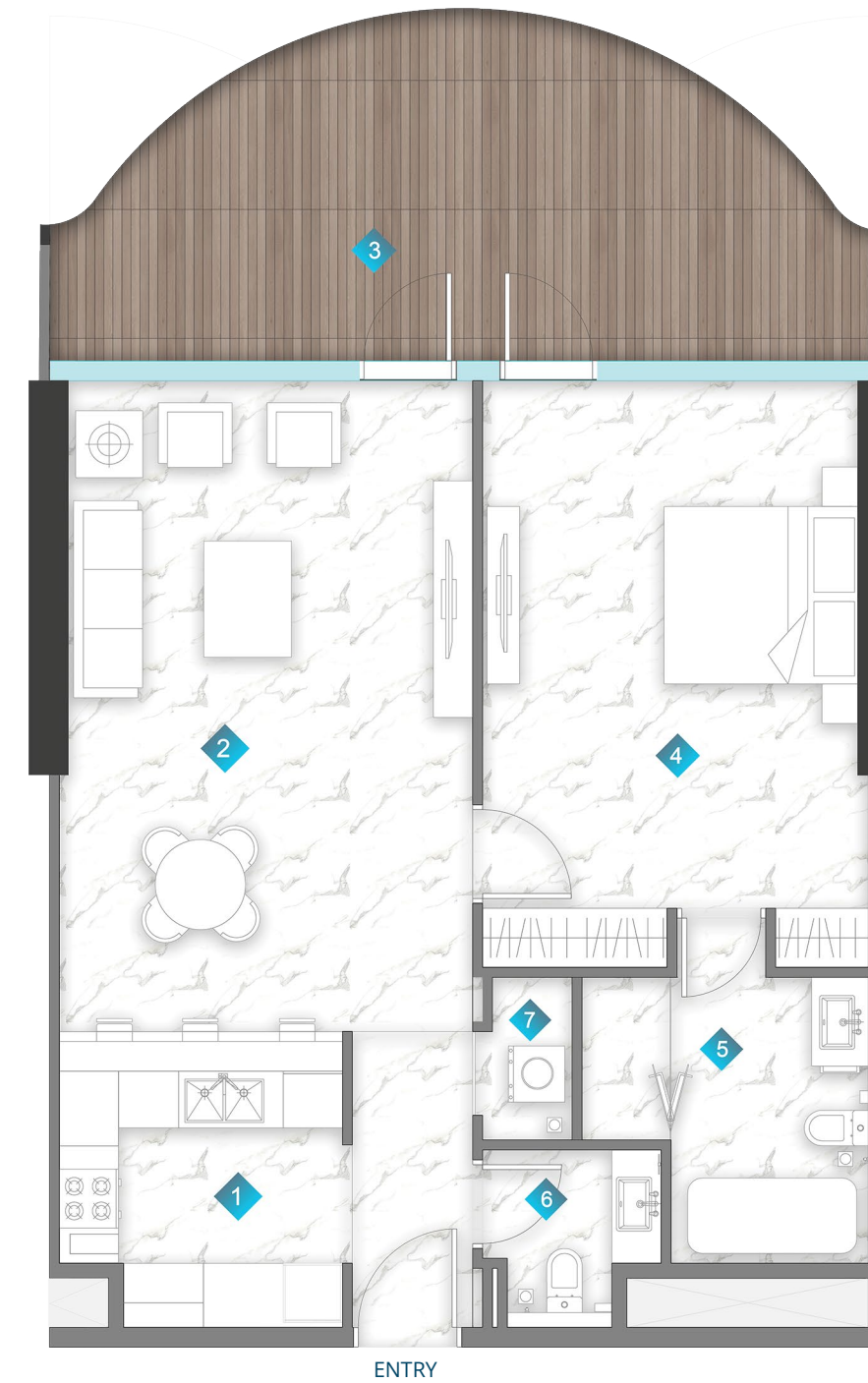
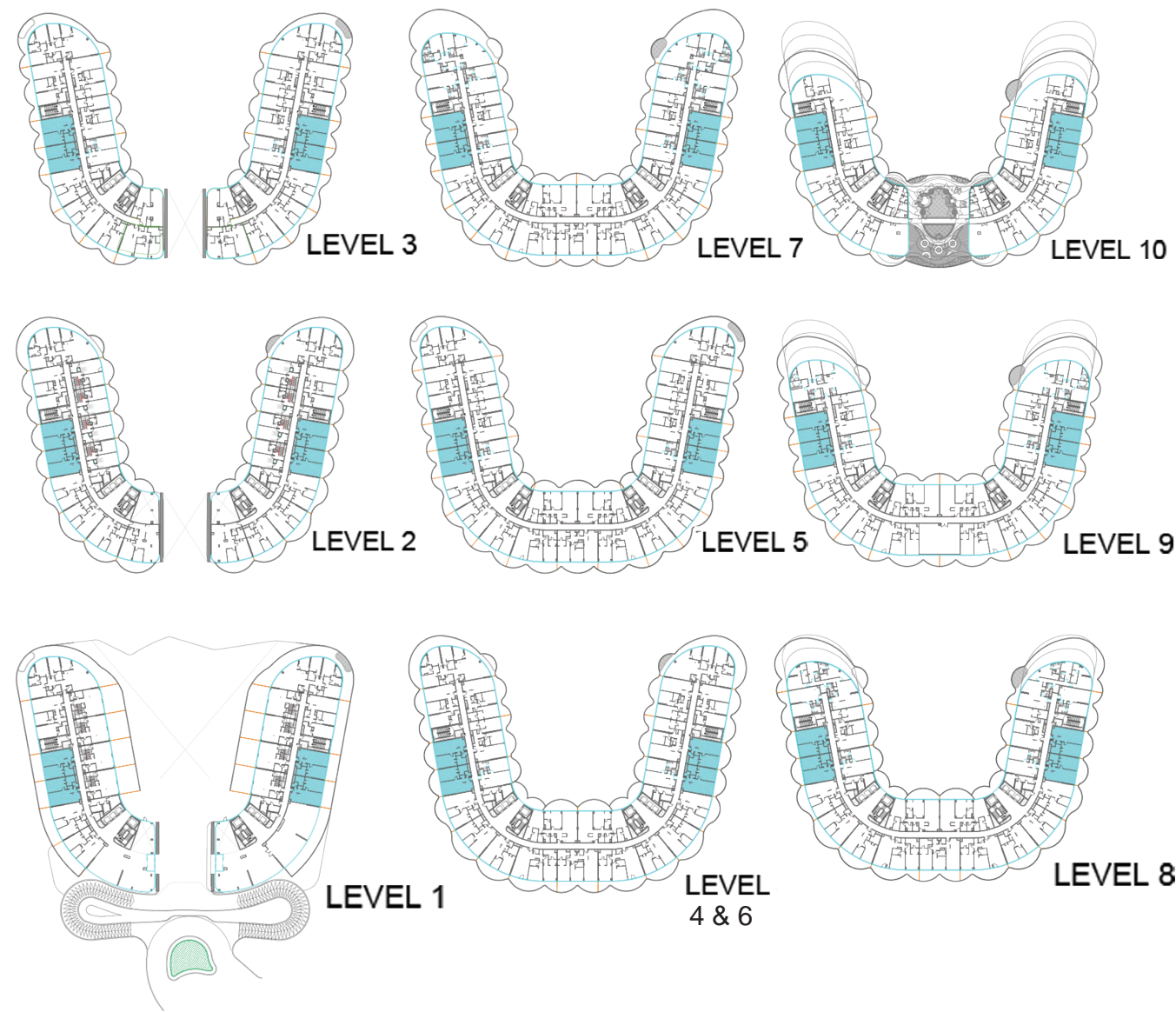
# PENTHOUSE

1	KITCHEN	6.3m x 5.2m	10	BEDROOM	4.05m x 6.7m
2	LIVING	16.3m x 7.4m	11	BATH	2.4m x 2.7m
3	PWD ROOM	1.6m x 1.2m	12	BEDROOM	10.1m x 6m
4	BATH	2.8m x 1.5m	13	BATH	3.4m x 5.3m
5	STUDY	3.6m x 5.3m	14	BEDROOM	5.4m x 4.2m
6	BEDROOM	4.2m x 3.1m	15	BATH	2.5m x 3.4m
7	BATH	2.3m x 2.3m	16	BALCONY	MIN. 1.2m wide
8	BEDROOM	4m x 6m	17	LAUNDRY	1m x 1.2m
9	BATH	3m x 2.4m	18	PRIVATE POOL	

	From	To
Suite Area	5547.72 sq. ft.	5549.44sq. ft.
Balcony Area	3111.42 sq. ft.	3111.52 sq. ft.
Total Area	8659.14 sq. ft.	8660.97 sq. ft.

\*All images used for illustrative purposes only and do not represent the actual size, feature specificatons, fitting, and furnishing. The developer reserves the right to make revision / alterations, at its absolute discretion, without any liability whatsoever.





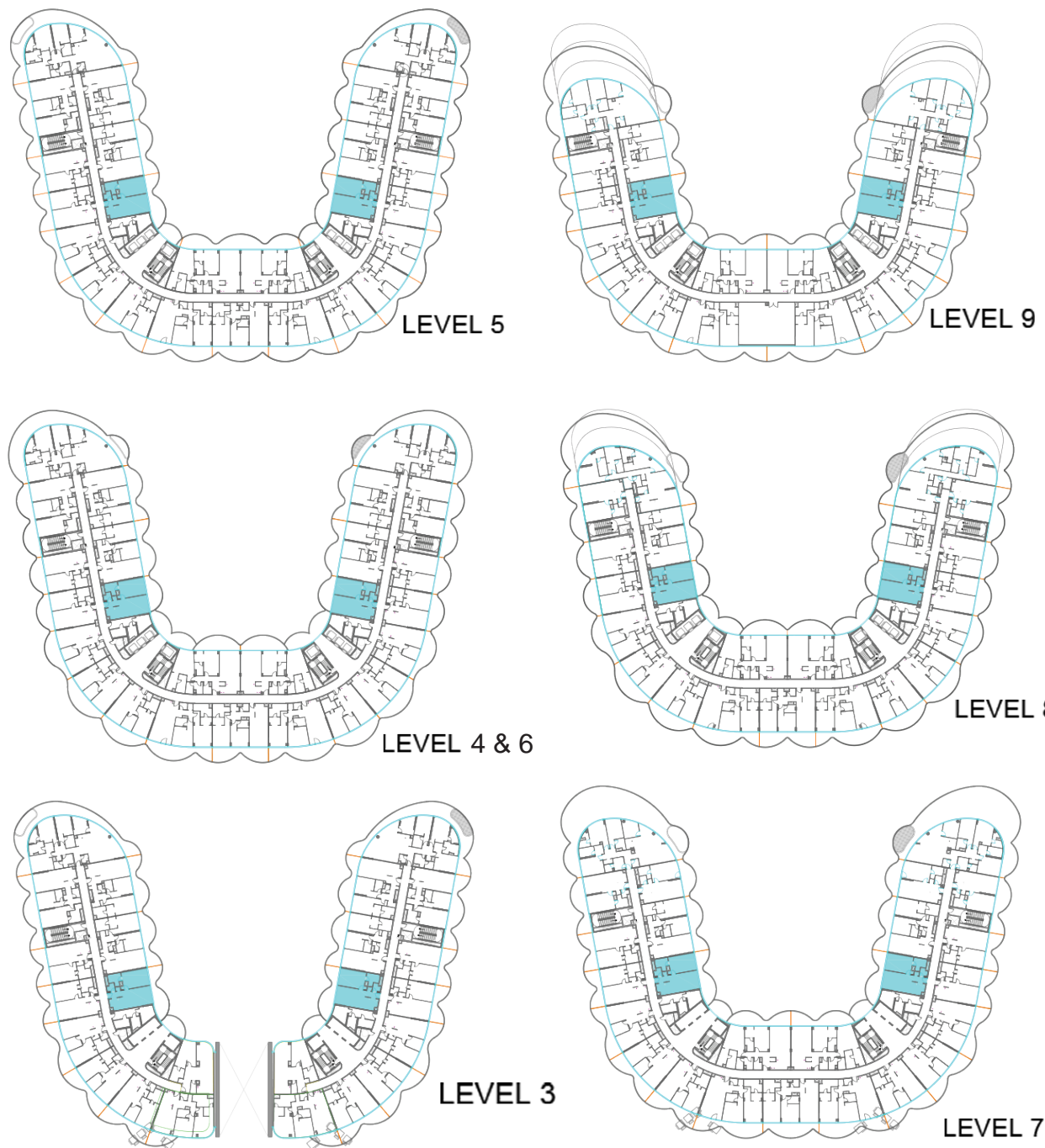
# 1 BEDROOM

## TYPE A

1	KITCHEN	3m x 2.9m
2	LIVING	6.6m x 4.0m
3	BALCONY	MIN. 1m wide
4	BEDROOM	3.8m x 5.4m
5	BATH	2.9m x 2.9m
6	PWD ROOM	1.8m x 1.8m
7	LAUNDRY	0.9m x 1.6m

	From	To
Suite Area	850.78sq. ft.	861.22sq. ft.
Balcony Area	241.33 sq. ft.	310.11 sq. ft.
Total Area	1092.11 sq. ft.	1171.33 sq. ft.





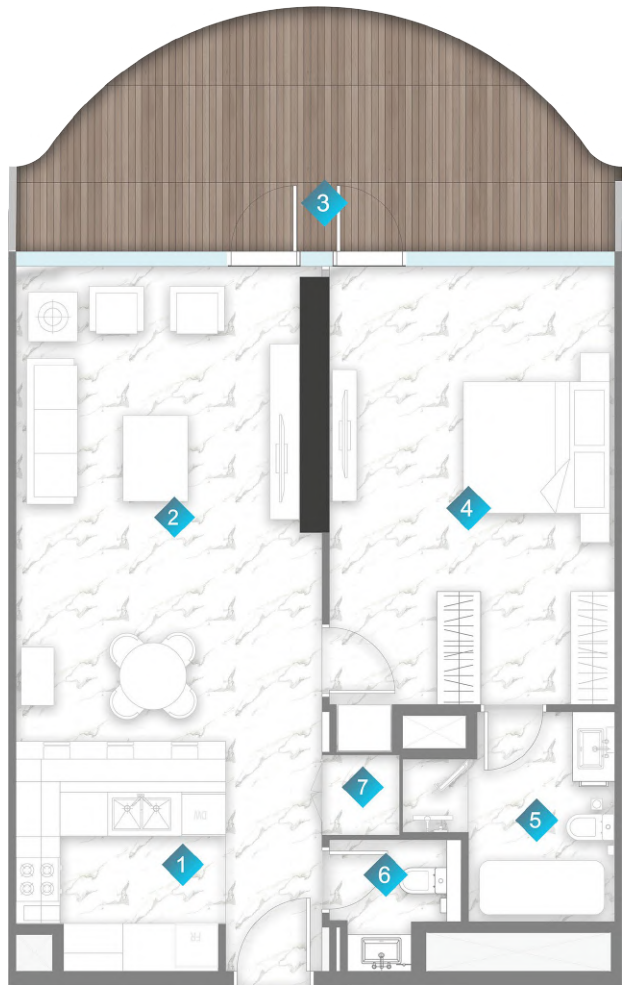
# 1 BEDROOM

## TYPE A 2

1	KITCHEN	2.8m x 3.1m
2	LIVING	4m x 6.5m
3	BALCONY	MIN. 1.2m wide
4	BEDROOM	3.8m x 5.9m
5	BATH	3m x 1.9m
6	PWD ROOM	1.8m x 1.8m
7	LAUNDRY	0.9m x 0.9m

	From	To
Suite Area	840.34sq. ft.	840.55sq. ft.
Balcony Area	224.97sq. ft.	337.02sq. ft.
Total Area	1065.30sq. ft.	1177.57sq. ft.



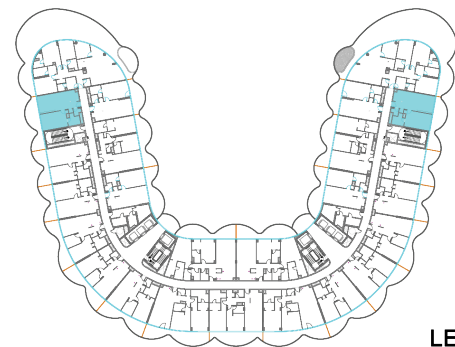


ENTRY

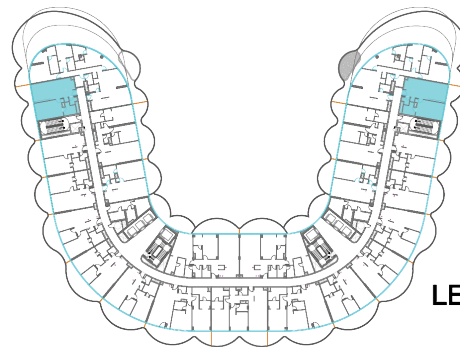
# 1 BEDROOM

## TYPE A3

1	KITCHEN	2.8m x 3.1m
2	LIVING	3.8m x 6.5m
3	BALCONY	MIN 1.0 m wide
4	BEDROOM	3.9m x 4.5m
5	BATH	2m x 2.8m
6	PWD ROOM	1.8m x 1.8m
7	LAUNDRY	1m x 1m

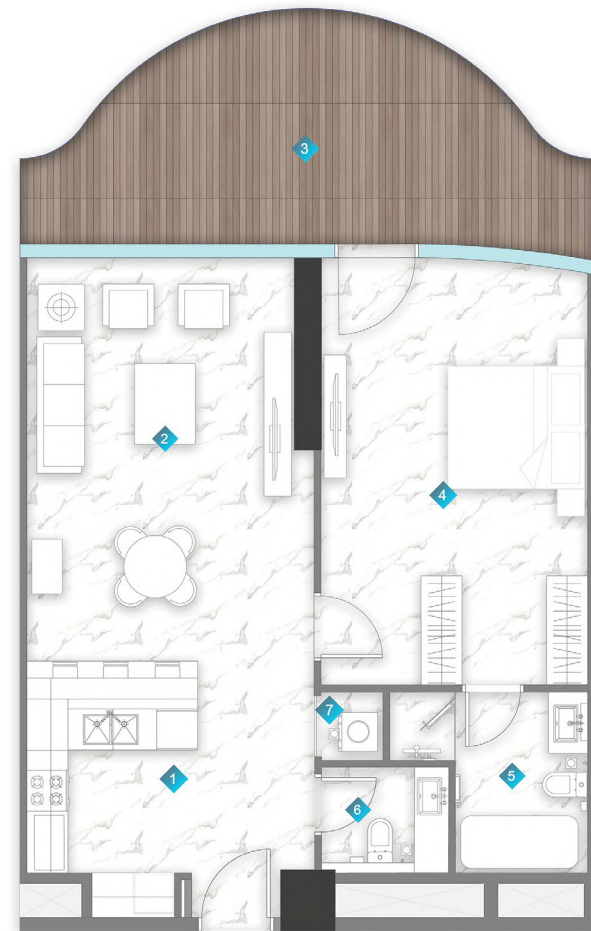


LEVEL 7



LEVEL 8

	From	To
Suite Area	843.14sq. ft.	845.7sq. ft.
Balcony Area	357.68sq. ft.	357.58sq. ft.
Total Area	1200.82sq. ft.	1202.65sq. ft.

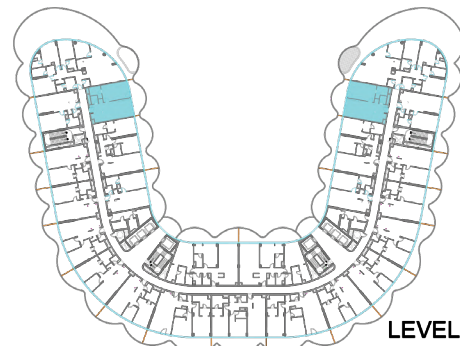


ENTRY

# 1 BEDROOM

## TYPE A4

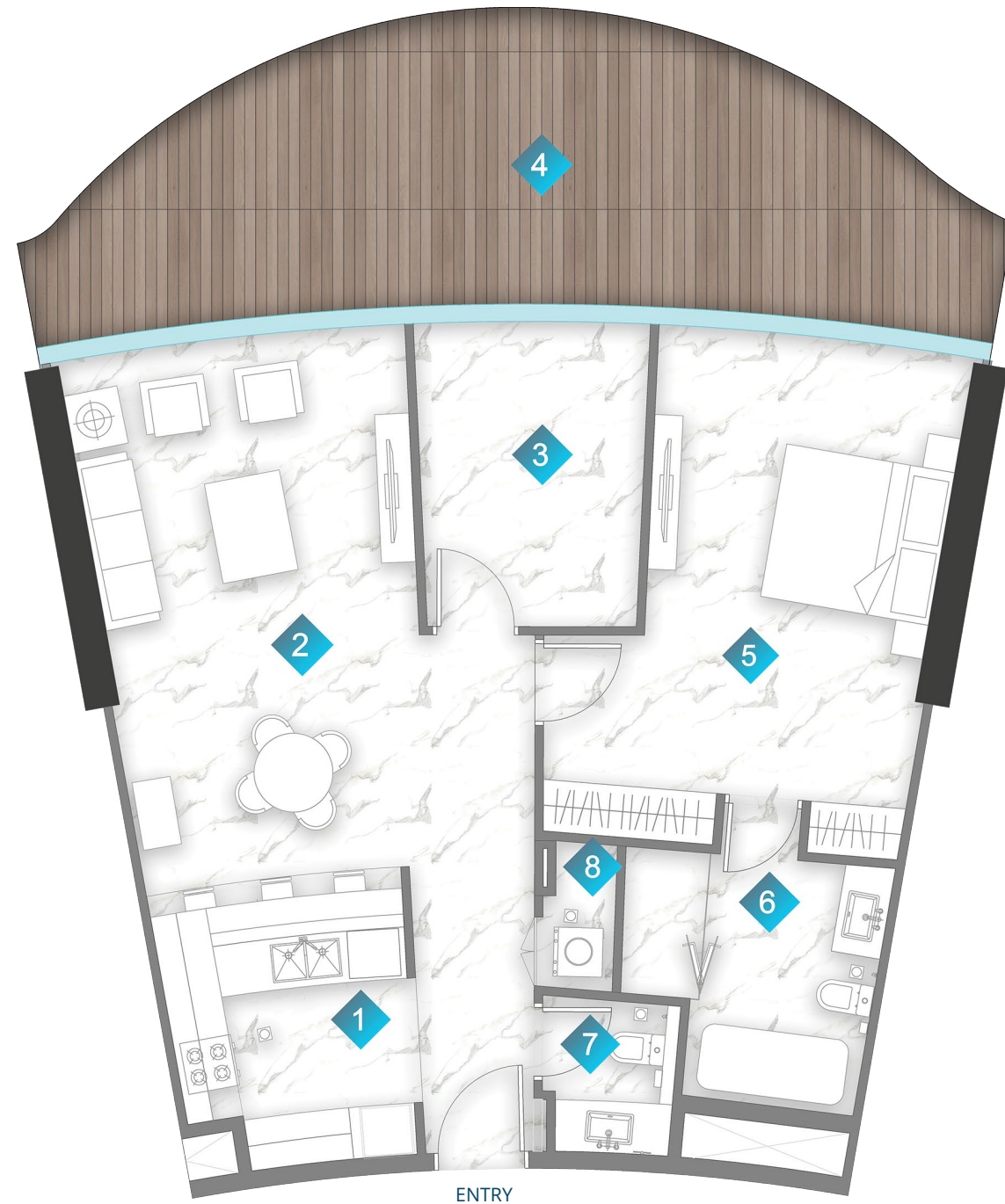
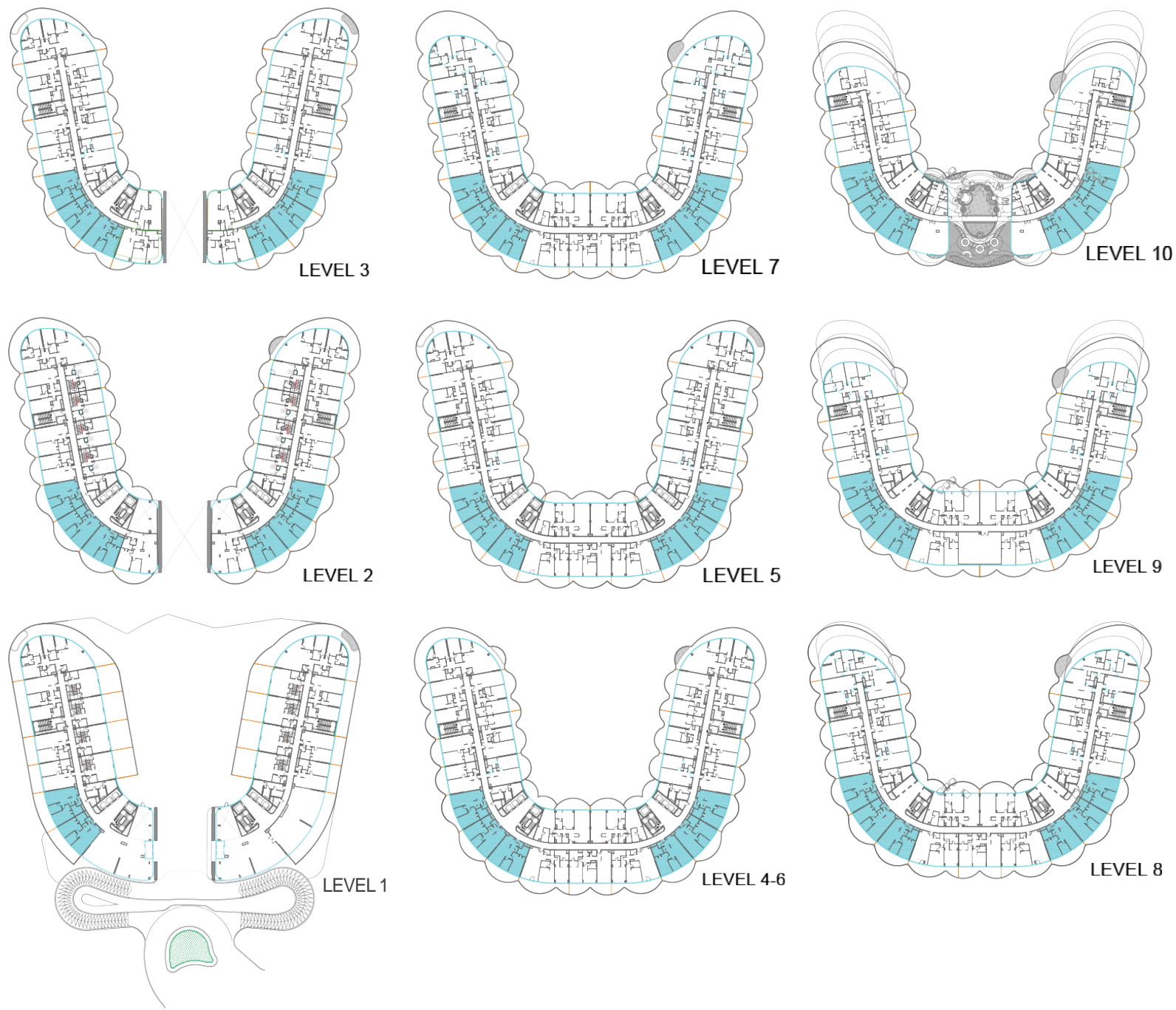
1	KITCHEN	2.4m x 2.8m
2	LIVING	3.9m x 6.1m
3	BALCONY	MIN. 1.2m wide
4	BEDROOM	3.8m x 5.7m
5	BATH	1.9m x 2.6m
6	PWD ROOM	1.8m x 1.5m
7	LAUNDRY	1m x 1m



LEVEL 7

	From	To
Suite Area	848.09sq. ft.	848.20sq. ft.
Balcony Area	236.05sq. ft.	236.05sq. ft.
Total Area	1084.14sq. ft.	1084.25sq. ft.





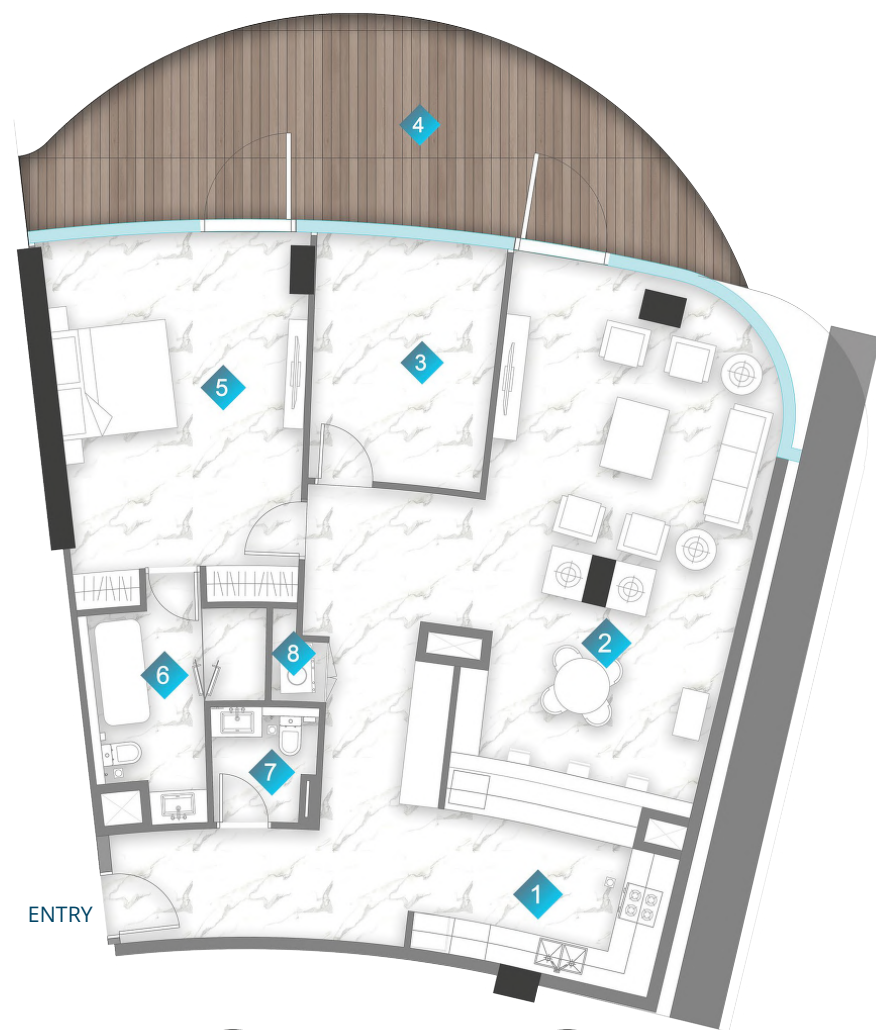
# 1 BEDROOM

## TYPE B

1	KITCHEN	3m x 3.3m
2	LIVING	4.1m x 6.3m
3	STUDY	2.7m x 3.5m
4	BALCONY	MIN. 1.2m wide
5	BEDROOM	3.7m x 5.3m
6	BATH	2m x 2.8m
7	PWD ROOM	1.3m x 1.8m
8	LAUNDRY	0.9m x 1.6m

	From	To
Suite Area	971.23sq. ft.	974.46sq. ft.
Balcony Area	297.08sq. ft.	437.55sq. ft.
Total Area	1268.31sq. ft.	1412.01sq. ft.



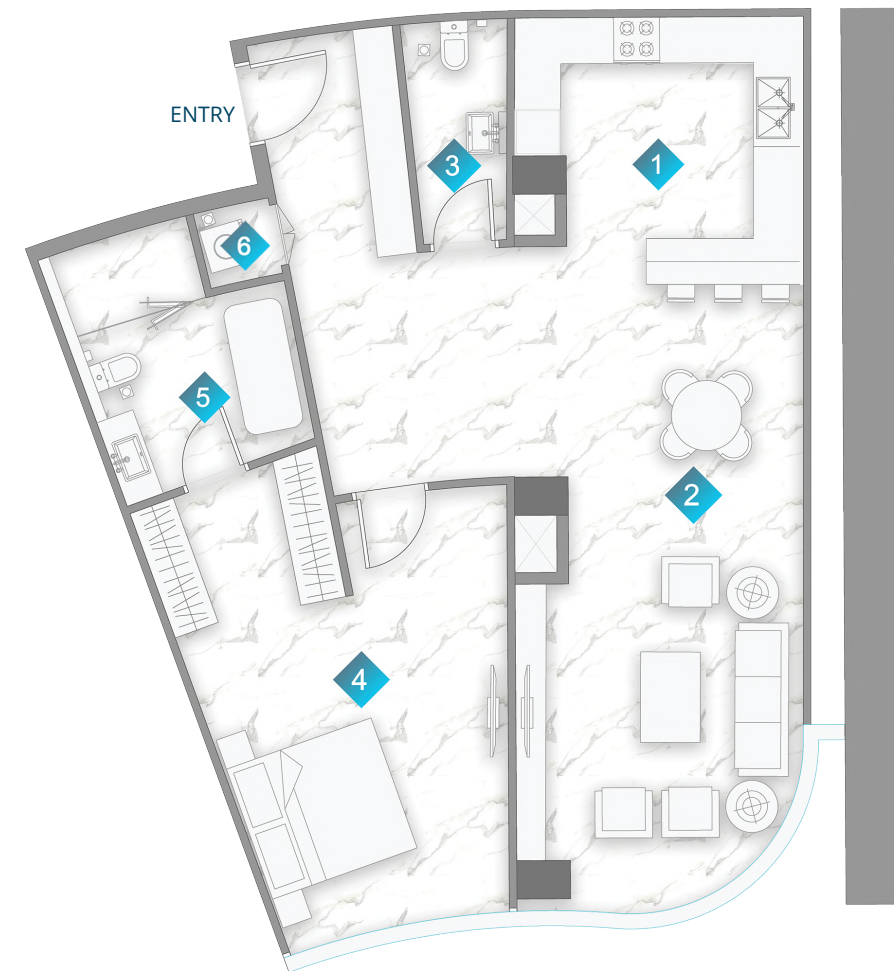


# 1 BEDROOM

## TYPE C

1	KITCHEN	3m x 3.9m
2	LIVING	4m x 8.6m
3	STUDY	3.1m x 4m
4	BALCONY	Varies
5	BEDROOM	4.5m x 5.5m
6	BATH	1.8m x 3m
7	PWD ROOM	1.8m x 1.8m
8	LAUNDRY	0.9m x 0.9m

	From	To
Suite Area	1390.27sq. ft.	1390.27sq. ft.
Balcony Area	339.17sq. ft.	339.17sq. ft.
Total Area	1729.44sq. ft.	1729.44sq. ft.



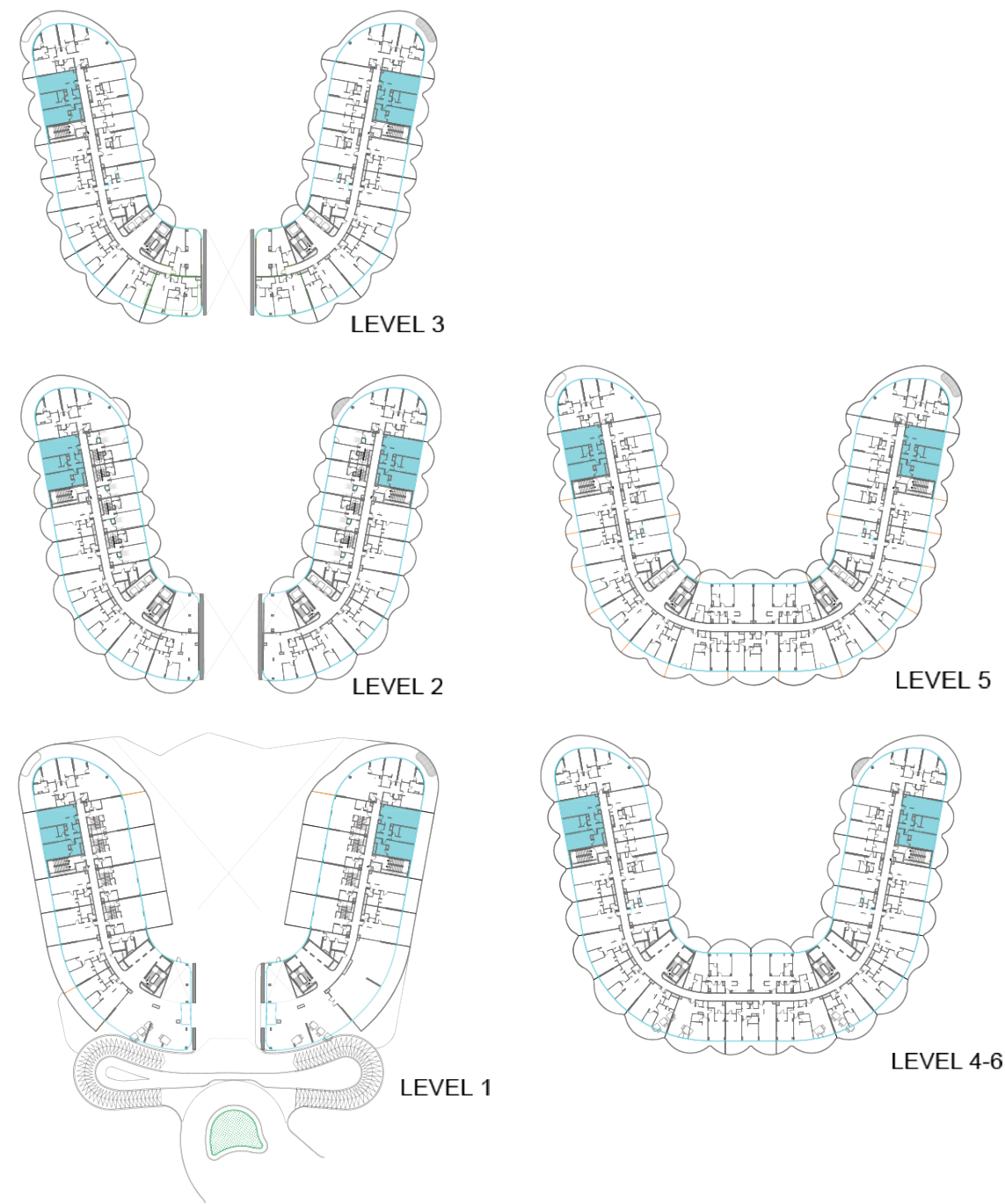
# 1 BEDROOM

## TYPE D

1	KITCHEN	3.7m x 3.5m
2	LIVING	3.7m x 8.1m
3	PWD ROOM	1.4m x 2.8m
4	BEDROOM	2.9m x 5.5m
5	BATH	2.9m x 3.4m
6	LAUNDRY	1m x 1m

	From	To
Suite Area	1030.97sq. ft.	1031.18sq. ft.
Balcony Area	-	-
Total Area	1030.97sq. ft.	1031.18sq. ft.





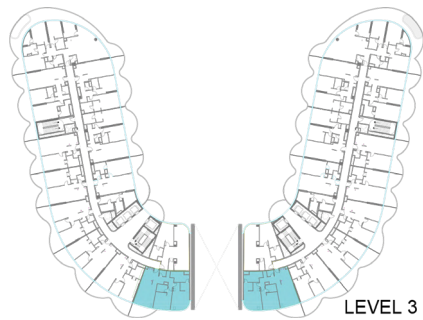
# 2 BEDROOM

## TYPE A

1	KITCHEN	2.9m x 3.0m
2	LIVING	4.3m x 6.6m
3	PWD ROOM	2.1m x 1.6m
4	LAUNDRY	1.2m x 1.6m
5	BEDROOM	3.5m x 3.5m
6	BATH	2.6m x 1.7m
7	BEDROOM	3.9m x 4.2m
8	BATH	2.6m x 2.6m
9	BALCONY	MIN. 1.2m wide

	From	To
Suite Area	1270.57sq. ft.	1271.33sq. ft.
Balcony Area	478.35 sq. ft.	619.21sq. ft.
Total Area	1748.92sq. ft.	1890.57sq. ft.





# 2 BEDROOM

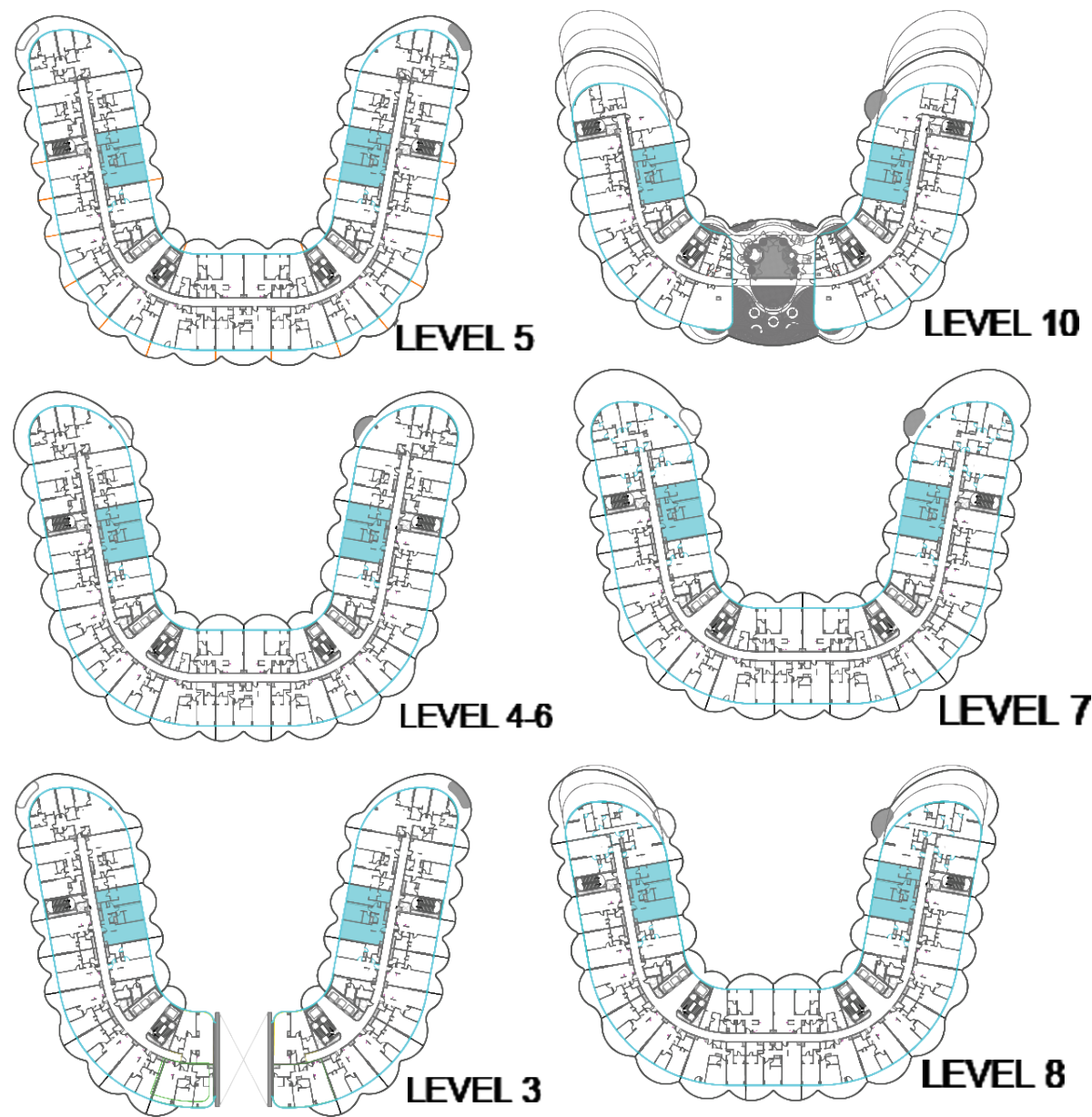
## TYPE B

1	KITCHEN	2.8m x 3.7m
2	LIVING	4.9m x 6.2m
3	BALCONY	Varies
4	PWD ROOM	1.7m x 1.4m
5	BEDROOM	4.2m x 3.6m
6	BATH	2.6m x 1.8m
7	BEDROOM	4.0m x 4.7m
8	BATH	3.2m x 2.7m
9	LAUNDRY	0.9m x 1.4m

	From	To
Suite Area	1326.01sq. ft.	1326.01sq. ft.
Balcony Area	170.39 sq. ft.	170.61 sq. ft.
Total Area	1496.40sq. ft.	1496.61sq. ft.

\*All images used for illustrative purposes only and do not represent the actual size, feature specificatons, fitting, and furnishing. The developer reserves the right to make revision / alterations, at its absolute discretion, without any liability whatsoever.





# 2 BEDROOM

## TYPE C

1	KITCHEN	2.9m x 3.1m
2	LIVING	4.3m x 6.5m
3	BALCONY	Min 1.2m wide
4	BEDROOM	4.2m x 3.5m
5	BATH	2.6m x 1.6m
6	BEDROOM	3.8m x 4.7m
7	BATH	2.5m x 2.9m
8	PWD ROOM	1.9m x 0.9m
9	LAUNDRY	1.2m x 1.1m

	From	To
Suite Area	1267.34 sq. ft.	1281.34sq. ft.
Balcony Area	343.48 sq. ft.	350.47sq. ft.
Total Area	1610.82sq. ft.	1631.81sq. ft.

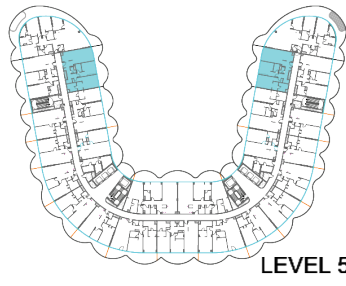
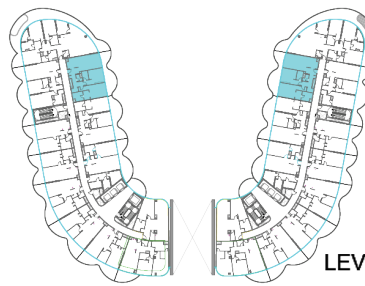
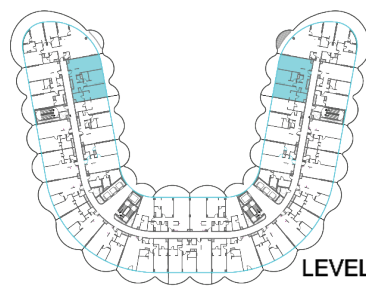




# 2 BEDROOM

## TYPE C 1

1	KITCHEN	2.9m x 3.1m
2	LIVING	4.3m x 6.2m
3	PWD ROOM	1.9m x 1m
4	BEDROOM	3.6m x 3.9m
5	BATH	2.6m x 1.7m
6	BEDROOM	3.8m x 4.7m
7	BATH	2.5m x 2.9m
8	LAUNDRY	1.9m x 0.9m
9	BALCONY	MIN. 1.6m wide



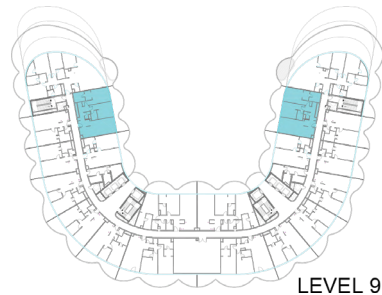
	From	To
Suite Area	1280.80 sq. ft.	1281.23 sq. ft.
Balcony Area	347.78 sq. ft.	352.20 sq. ft.
Total Area	1628.58 sq. ft.	1633.42 sq. ft.



# 2 BEDROOM

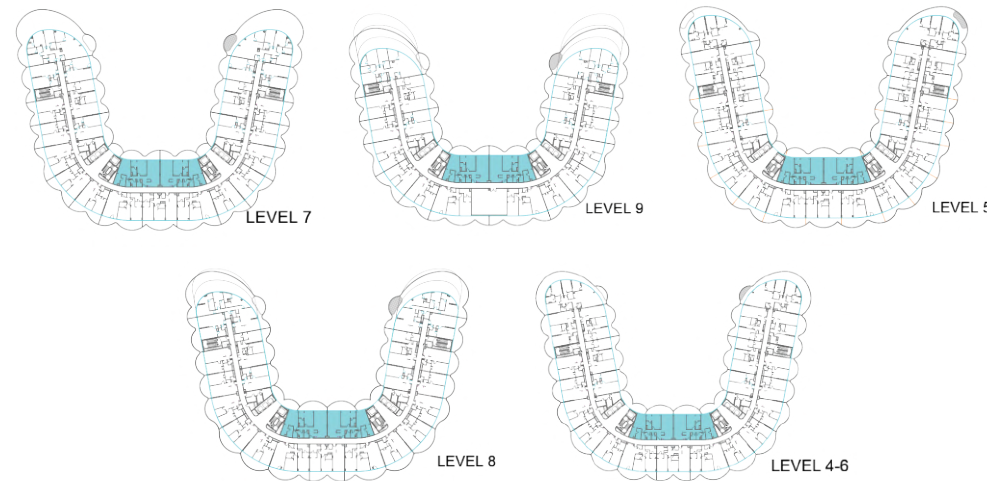
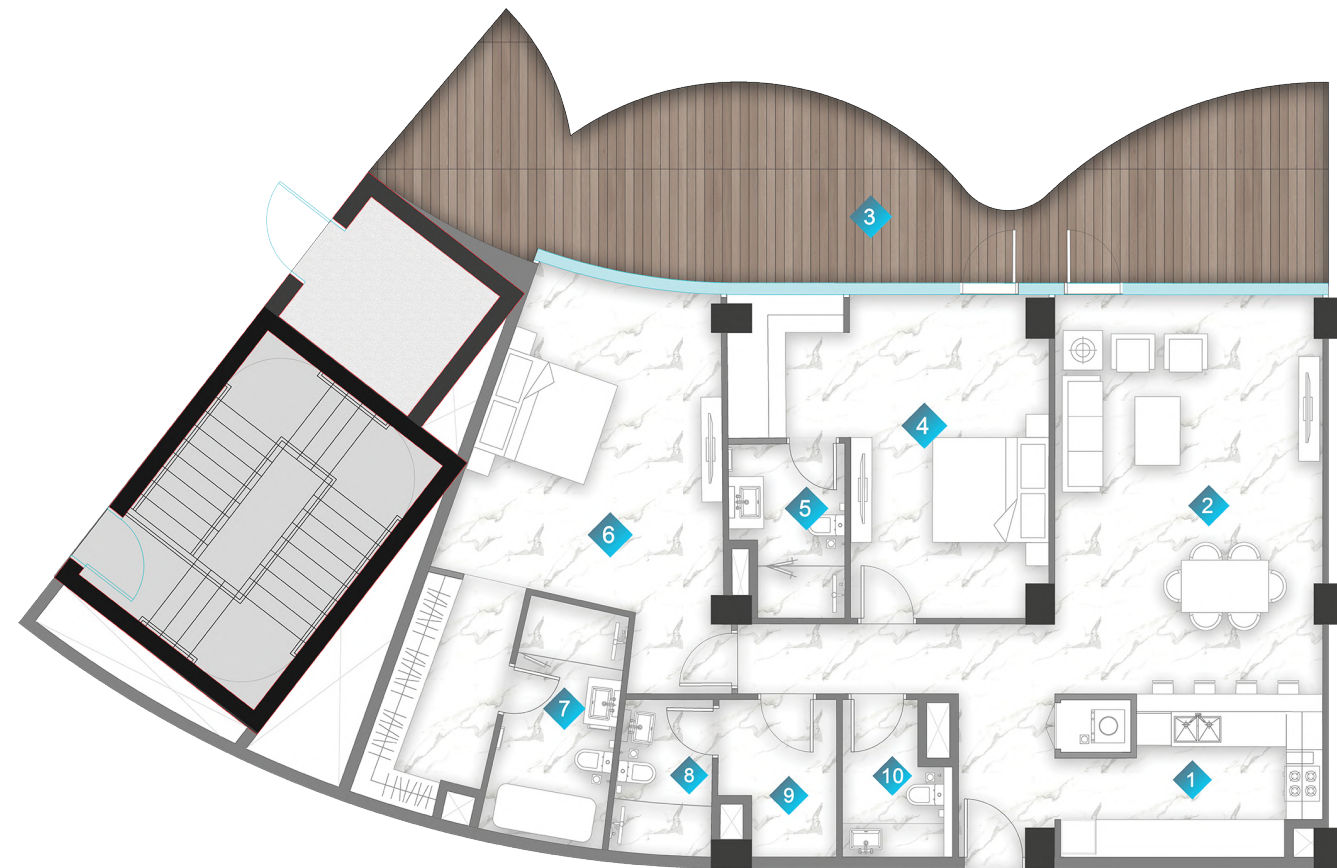
## TYPE C 2

1	KITCHEN	2.8m x 3m
2	LIVING	4.1m x 6.5m
3	PWD ROOM	1.8m x 1.6m
4	BEDROOM	3.9m x 4.1m
5	BATH	2.6m x 1.6m
6	LAUNDRY	1.2m x 1.1m
7	BEDROOM	3.8m x 4.7m
8	BATH	2.5m x 2.9m
9	BALCONY	MIN. 1.2m wide



	From	To
Suite Area	1277.78sq. ft.	1277.89 sq. ft.
Balcony Area	353.27sq. ft.	353.38 sq. ft.
Total Area	1631.06sq. ft.	1631.27sq. ft.



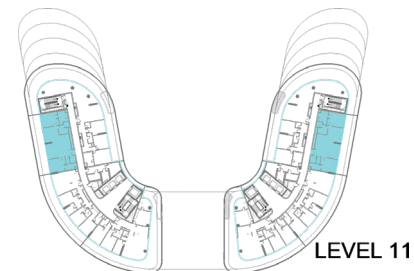
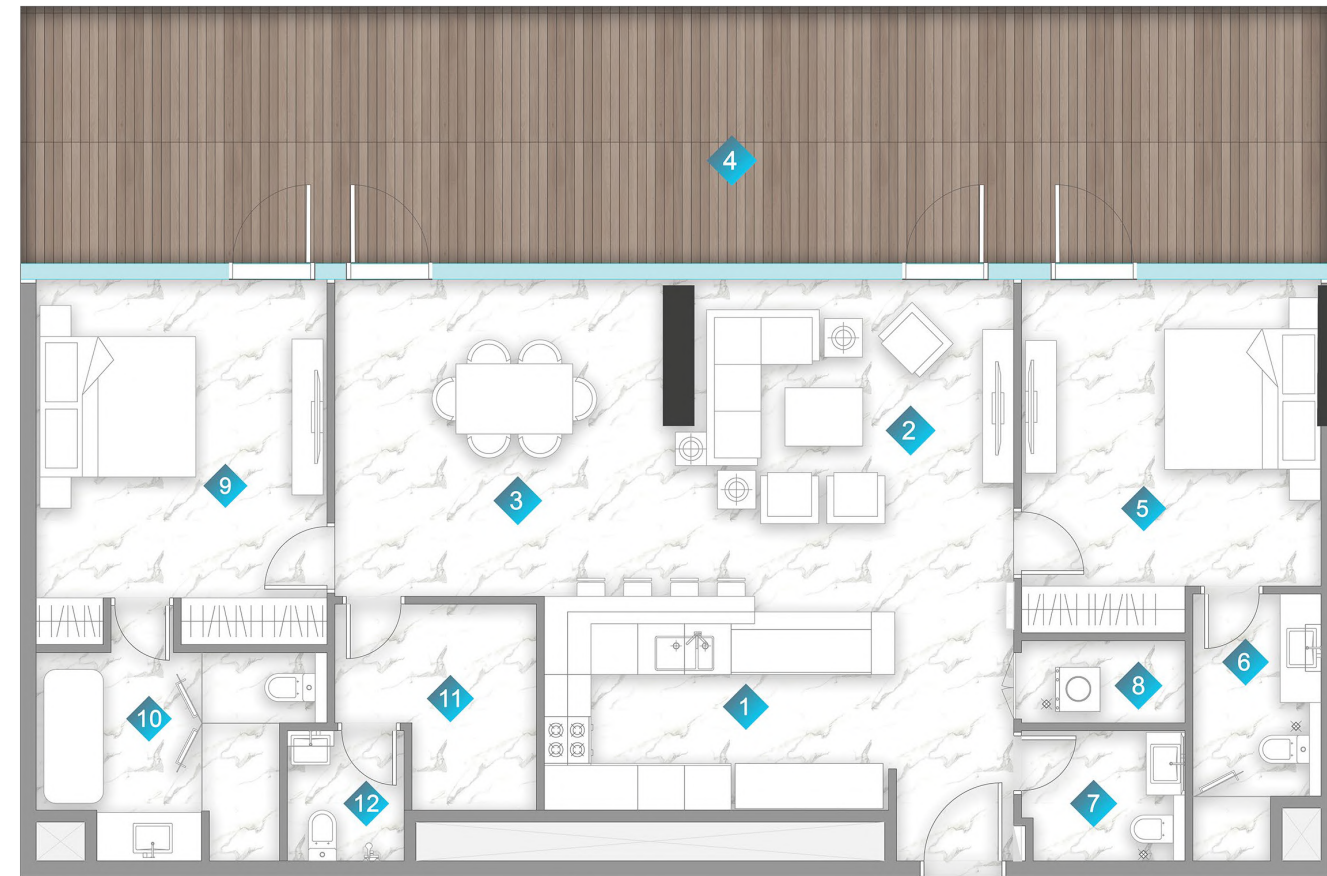


# 2 BEDROOM

## TYPE D

1	KITCHEN	3.2m x 2.8m
2	LIVING	4.6m x 6.8m
3	BALCONY	MIN. 1.3m wide
4	BEDROOM	3.4m x 5.5m
5	BATH	2.0m x 2.9m
6	BEDROOM	3.1m x 5.5m
7	BATH	1.7m x 4m
8	BATH	2.7m x 1.7m
9	STORE	2m x 2.7m
10	PWD ROOM	1.8m x 2.7m

	From	To
Suite Area	1572.18 sq. ft.	1576.27 sq. ft.
Balcony Area	296.33 sq. ft.	396.11 sq. ft.
Total Area	1868.51sq. ft.	1972.38 sq. ft.



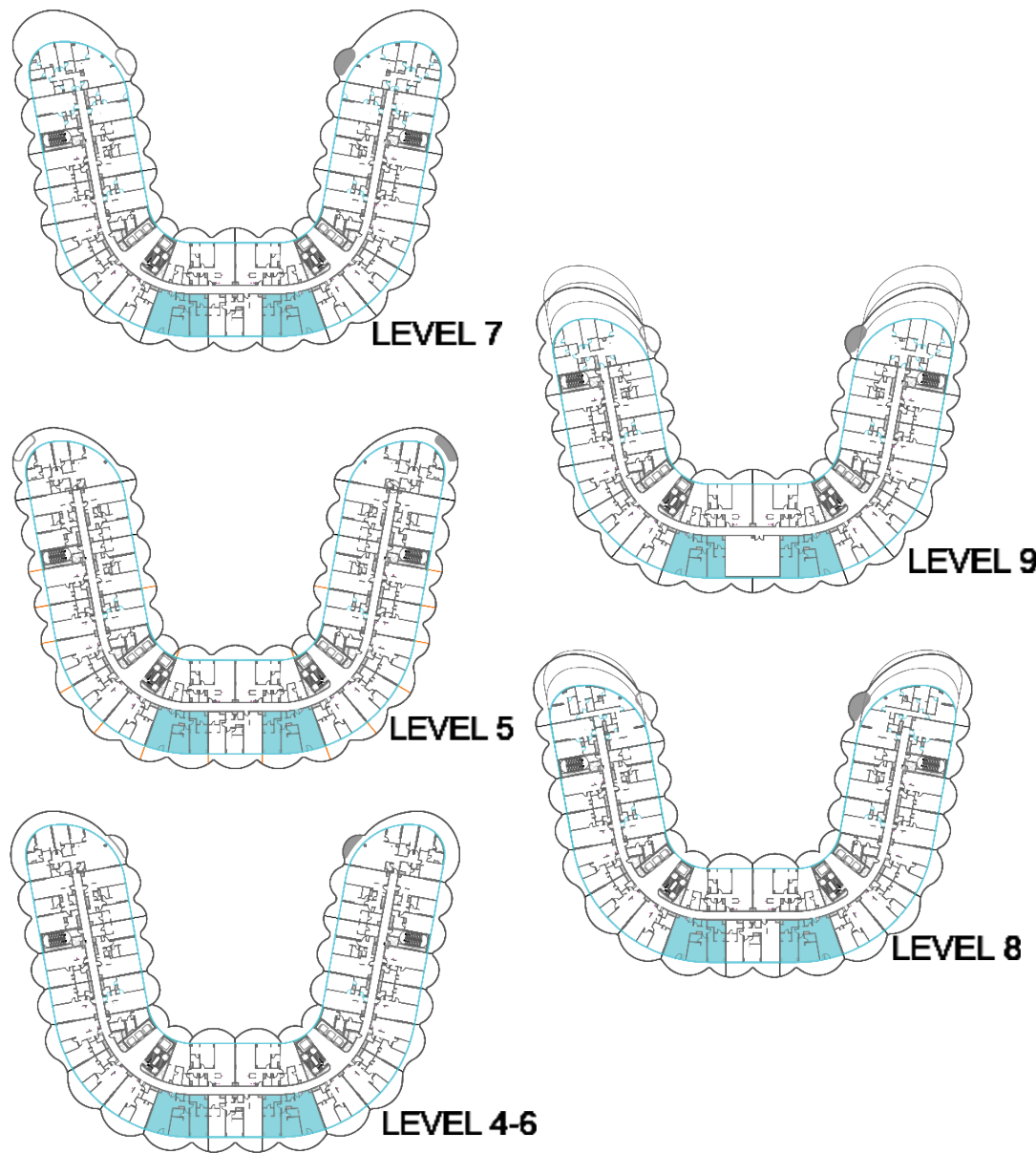
# 2 BEDROOM

## TYPE E

1	KITCHEN	4.4m x 2.6m
2	LIVING	4.1m x 4.2m
3	DINING	4.2m x 4.2m
4	BALCONY	MIN. 3.2m wide
5	BEDROOM	3.7m x 3.9m
6	BATH	1.6m x 3.4m
7	PWD ROOM	1.9m x 1.6m
8	LAUNDRY	2.1m x 1m
9	BEDROOM	3.6m x 4m
10	BATH	3.1m x 2.6m
11	STORE	1.6m x 2.6m
12	BATH	1.5m x 1.6m

	From	To
Suite Area	1301.89 sq. ft.	1303.08 sq. ft.
Balcony Area	586.96 sq. ft.	586.85 sq. ft.
Total Area	1888.85 sq. ft.	1889.93 sq. ft.





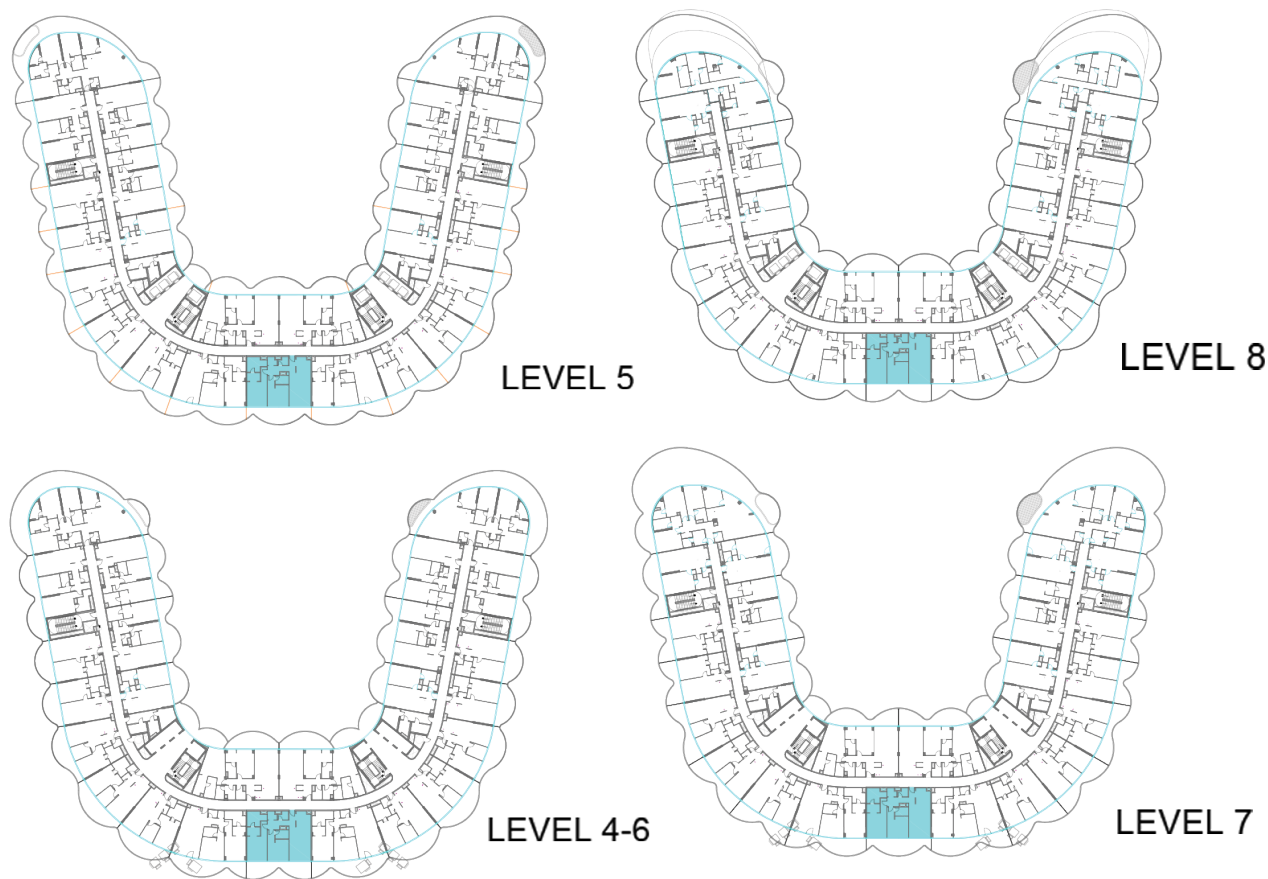
# 2 BEDROOM

## TYPE F

1	KITCHEN	3m x 3.2m
2	LIVING	5.3m x 6.6m
3	BALCONY	Varies
4	BEDROOM	4.8m x 3.6m
5	BATH	2.6m x 1.9m
6	BEDROOM	4.1m x 4.7m
7	BATH	2.5m x 2.7m
8	LAUNDRY	1.1m x 1.4m
9	PWD ROOM	1.7m x 1.4m

	From	To
Suite Area	1360.99sq. ft.	1350.22sq. ft.
Balcony Area	432.92sq. ft.	625.49sq. ft.
Total Area	1793.91sq. ft.	1975.72sq. ft.





# 2 BEDROOM

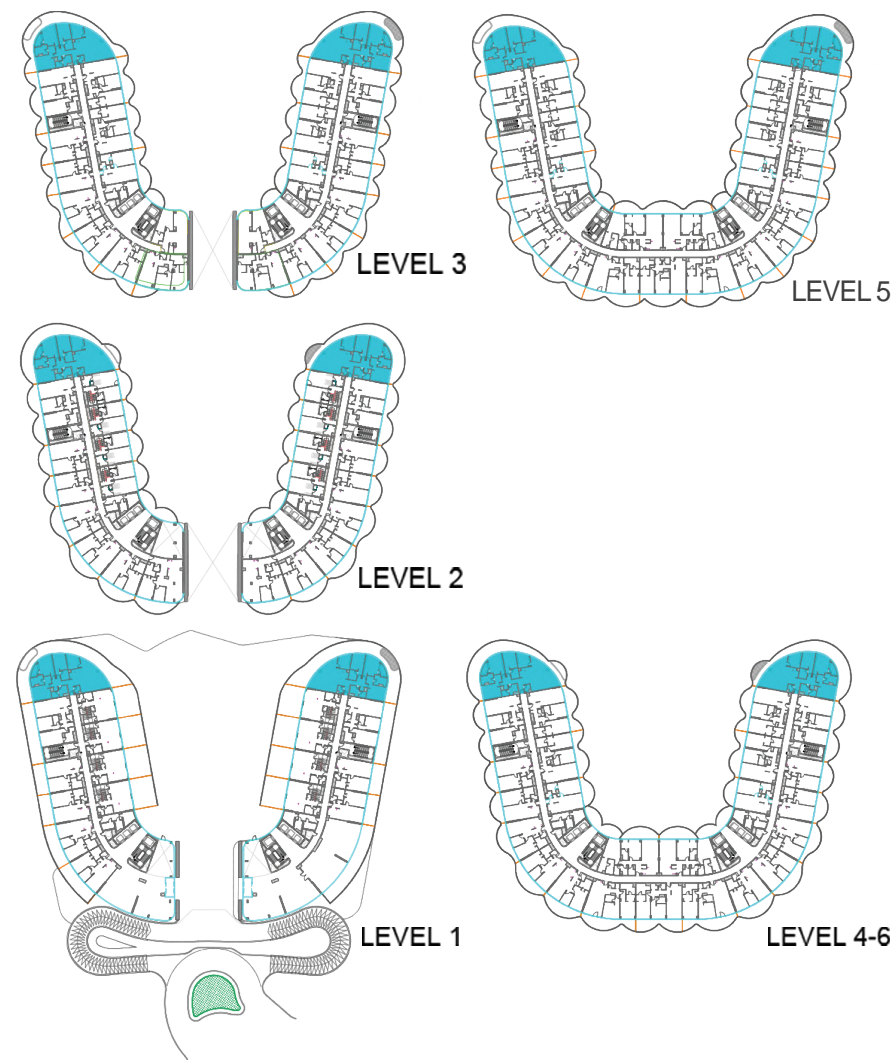
## TYPE G

1	KITCHEN	3m x 3.1m
2	LIVING	4.3m x 6.5m
3	BALCONY	MIN. 1.3m wide
4	BEDROOM	4.2m x 4.1m
5	BATH	2.6m x 1.7m
6	PWD ROOM	2.1m x 1.7m
7	LAUNDRY	1.8m x 1.7m
8	BEDROOM	3.8m x 4.7m
9	BATH	2.5m x 2.9m

	From	To
Suite Area	1296.30sq. ft.	1296.41sq. ft.
Balcony Area	350.80sq. ft.	390.08sq. ft.
Total Area	1647.09sq. ft.	1686.49sq. ft.

\*All images used for illustrative purposes only and do not represent the actual size, feature specificatons, fitting, and furnishing. The developer reserves the right to make revision / alterations, at its absolute discretion, without any liability whatsoever.





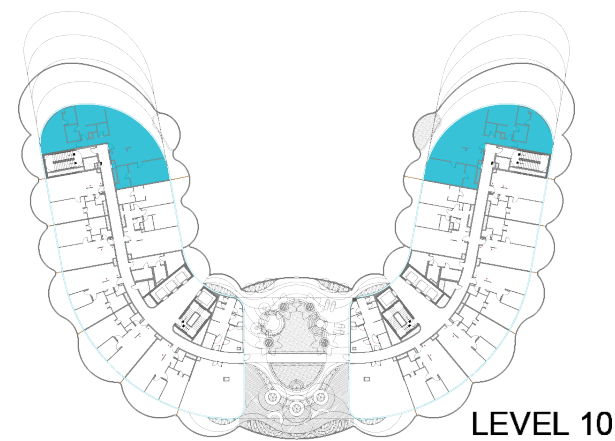
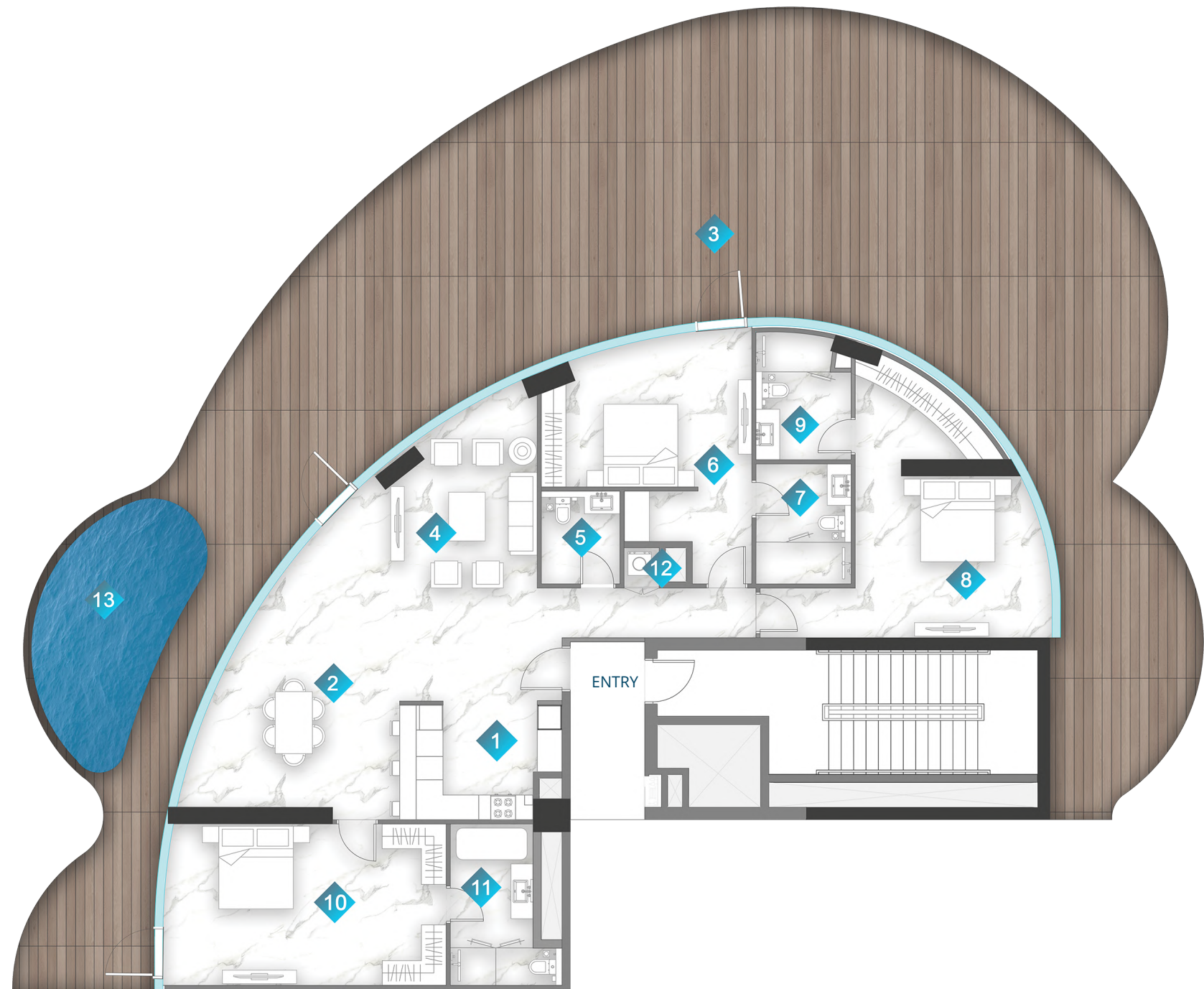
	From	To
Suite Area	2135.02 sq. ft.	2135.56 sq. ft.
Balcony Area	1140.87 sq. ft.	1644.19 sq. ft.
Total Area	3275.89sq. ft.	3779.75 sq. ft.

# 3 BEDROOM

## TYPE A

1	KITCHEN	3.6m x 2.5m
2	LIVING	8m x 9.5m
3	BALCONY	MIN.1.2m wide
4	STUDY	3.5m x 4.2m
5	BEDROOM	3.4m x 4.2m
6	BATH	2.2m x 2.7m
7	PWD ROOM	1.6m x 2.1m
8	M. BEDROOM	3.7m x 3.7m
9	BATH	2.6m x 3.0m
10	BATH	2.5m x 3.4m
11	BEDROOM	5.0m x 3.9m
12	STORE	2.4m x 2.8m
13	LAUNDRY	1.1m x 0.9m
14	BATH	1.9m x 1.6m
15	PRIVATE POOL	





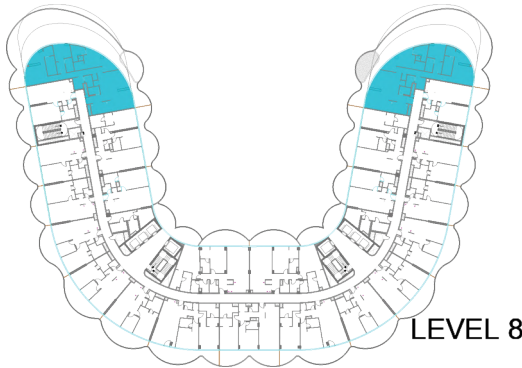
	From	To
Suite Area	2031.15sq. ft.	2030.29sq. ft.
Balcony Area	2467.63sq. ft.	2468.70sq. ft.
Total Area	4498.78sq. ft.	4498.99sq. ft.

# 3 BEDROOM

## TYPE B

1	KITCHEN	3.2m x 2.8m
2	DINING	5.4m x 2.8m
3	BALCONY	MIN. 1.5m wide
4	LIVING	7.7m x 3.5m
5	PWD ROOM	1.9m x 2.2m
6	BEDROOM	4.4m x 3.0m
7	BATH	2.2m x 2.9m
8	BEDROOM	4.8m x 6.8m
9	BATH	2.2m x 2.8m
10	BEDROOM	6.5m x 3.9m
11	BATH	2.7m x 3.9m
12	LAUNDRY	1m x 1m
13	PRIVATE POOL	





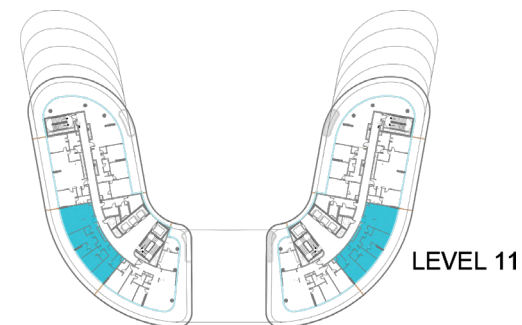
	From	To
Suite Area	2081.09sq. ft.	2082.31sq. ft.
Balcony Area	2353.53sq. ft.	2353.31sq. ft.
Total Area	4434.62sq. ft.	4434.62sq. ft.

# 3 BEDROOM

## TYPE C

1	KITCHEN	4.2m x 2.4m
2	DINING	4.7m x 3.9m
3	LIVING	6m x 4m
4	LAUNDRY	1.2m x 1m
5	PWD ROOM	2.3m x 1.5m
6	BEDROOM	6.7m x 4.4m
7	BATH	1.2m x 2.5m
8	BATH	3.6m x 2.9m
9	BEDROOM	3.5m x 3.1m
10	BATH	1.6m x 2.9m
11	BEDROOM	4.7m x 7.2m
12	BATH	2m x 3.9m
13	STORE	1.7m x 2.5m
14	BALCONY	MIN. 1.54 m wide
15	PRIVATE POOL	





	From	To
Suite Area	1431.71sq. ft.	1433.43sq. ft.
Balcony Area	766.28sq. ft.	765.64sq. ft.
Total Area	2197.99sq. ft.	2199.07sq. ft.

# 3 BEDROOM

## TYPE D

1	KITCHEN	3m x 3m
2	LIVING	6.3m x 4.4m
3	PWD ROOM	1.7m x 1.6m
4	BEDROOM	3.5m x 3.9m
5	BATH	2.2m x 3m
6	BEDROOM	3.9m x 3.6m
7	BATH	1.8m x 1.8m
8	BEDROOM	3.6m x 4.1m
9	BATH	1.6m x 2.3m
10	BALCONY	MIN. 3.2m wide





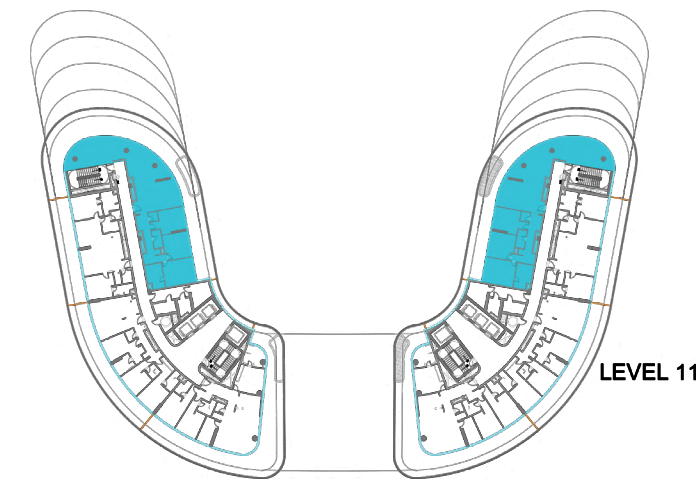
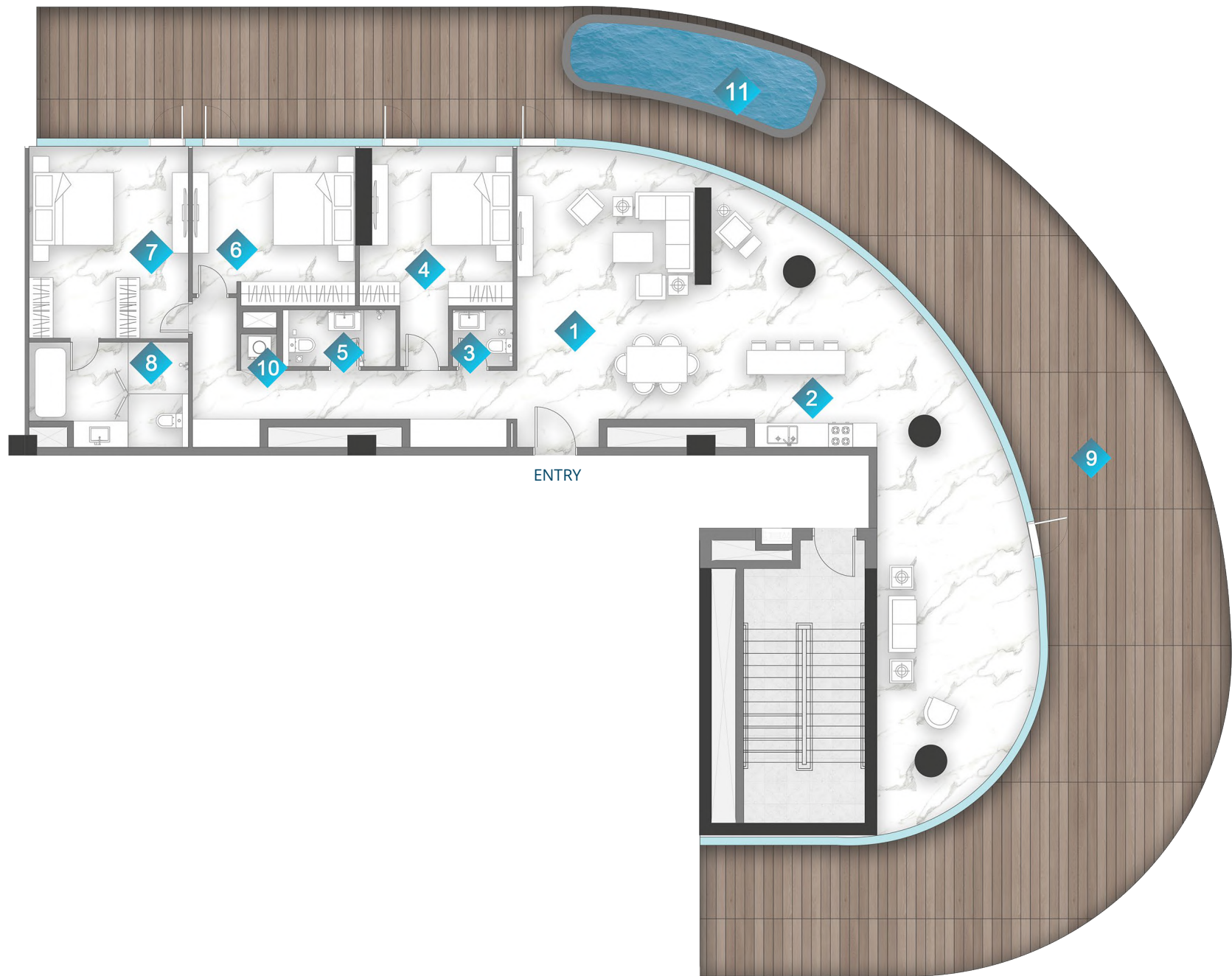
	From	To
Suite Area	1781.21sq. ft.	1781.64sq. ft.
Balcony Area	1587.68sq. ft.	1587.78sq. ft.
Total Area	3368.89sq. ft.	3369.43sq. ft.

# 3 BEDROOM

## TYPE E

1	KITCHEN	3.1m x 3.9m
2	LIVING	6.2m x 6.5m
3	PWD ROOM	1.5m x 1.4m
4	LAUNDRY	1m x 1.4m
5	STUDY	4.1m x 2.3m
6	BEDROOM	3.5m x 3.7m
7	BATH	1.9m x 2.2m
8	BEDROOM	4.6m x 3.7m
9	BATH	2.7m x 1.8m
10	BALCONY	MIN. 3m wide
11	BEDROOM	4.2m x 3.2m
12	BATH	3.2m x 3.7m
13	POOL	





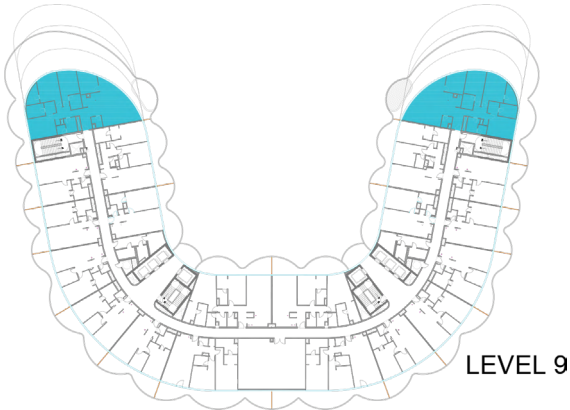
	From	To
Suite Area	2018.45sq. ft.	2021.35sq. ft.
Balcony Area	1997.57sq. ft.	1995.31sq. ft.
Total Area	4016.01sq. ft.	4016.66sq. ft.

# 3 BEDROOM

## TYPE F

1	LIVING	8.9m x 7.4m
2	KITCHEN	3m x 2.6m
3	PWD ROOM	1.5m x 1.3m
4	BEDROOM	3.3m x 3.4m
5	BATH	2.9m x 1.4m
6	BEDROOM	4.0m x 3.4m
7	BEDROOM	3.3m x 3.9m
8	BATH	3.9m x 2.6m
9	BALCONY	MIN. 1.2m wide
10	LAUNDRY	0.9m x 0.9m
11	PRIVATE POOL	





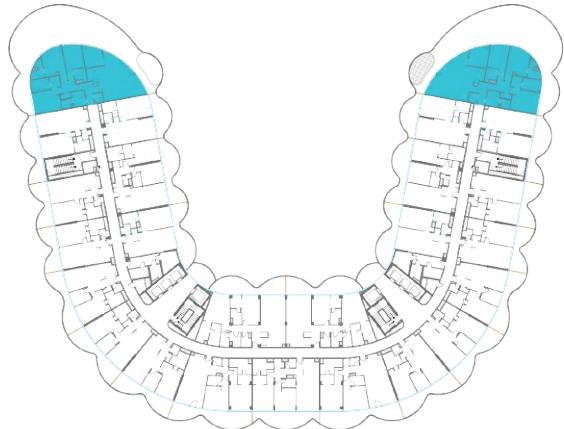
	From	To
Suite Area	2120.28sq. ft.	2119.31sq. ft.
Balcony Area	2469.13sq. ft.	2470.32sq. ft.
Total Area	4589.41sq. ft.	4589.63sq. ft.

# 3 BEDROOM

## TYPE G

1	KITCHEN	3.5m x 2.5m
2	LIVING	7.2m x 9.3m
3	STUDY	3.5m x 4.5m
4	BATH	2.2m x 2.6m
5	BEDROOM	3.5m x 3.6m
6	STORE	2.7m x 2.8m
7	BATH	1.7m x 1.7m
8	LAUNDRY	1.0m x 0.8m
9	BEDROOM	3.9m x 3.6m
10	BATH	3.9m x 2.6m
11	BEDROOM	4.4m x 3.9m
12	BATH	3.2m x 2.0m
13	BALCONY	MIN. 1.5m wide
14	PWD ROOM	1.9m x 2.1m
15	PRIVATE POOL	





LEVEL 7

	From	To
Suite Area	2145.03sq. ft.	2145.14sq. ft.
Balcony Area	2351.27sq. ft.	2351.70sq. ft.
Total Area	4496.30sq. ft.	4494.84sq. ft.

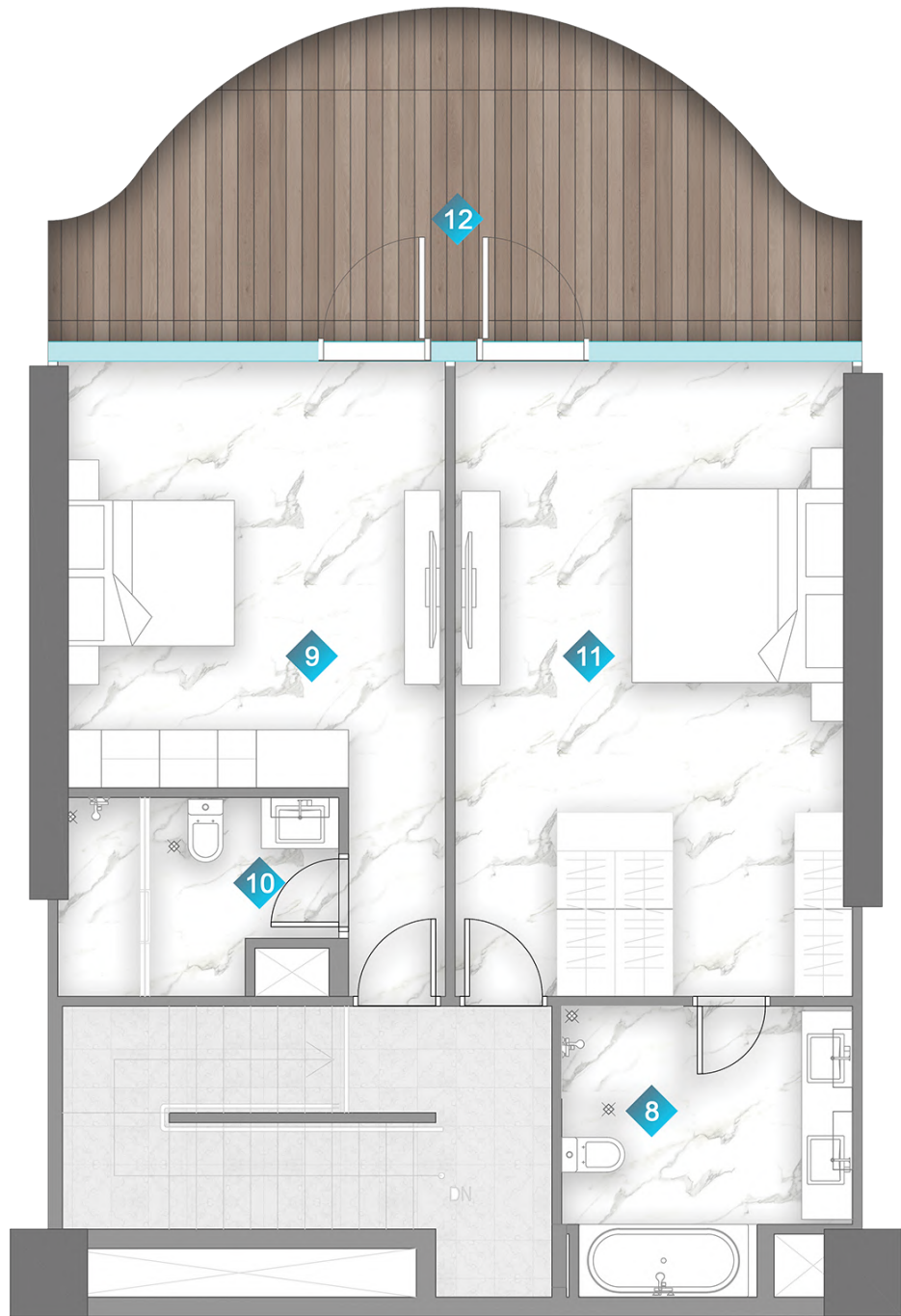
# 3 BEDROOM

## TYPE H

1	KITCHEN	3.5m x 2.7m
2	LIVING	8.1m x 9.5m
3	PWD ROOM	1.6m x 1.7m
4	STUDY	3.5m x 4.5m
5	BEDROOM	3.5m x 3.6m
6	BATH	2.2m x 2.6m
7	STORE	2.4m x 2.8m
8	LAUNDRY	2.1m x 1m
9	BATH	1.7m x 1.7m
10	BEDROOM	3.9m x 4.4m
11	BATH	3.3m x 1.9m
12	BEDROOM	4m x 3.5m
13	BATH	2.6m x 4.1m
14	BALCONY	MIN. 1.2m wide
15	PRIVATE POOL	

\*All images used for illustrative purposes only and do not represent the actual size, feature specificatons, fitting, and furnishing. The developer reserves the right to make revision / alterations, at its absolute discretion, without any liability whatsoever.



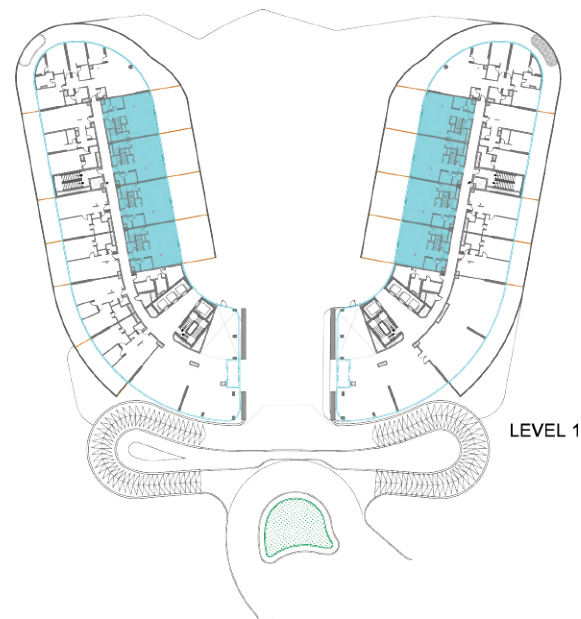


UPPER LEVEL



LOWER LEVEL

ENTRY



	From	To
Suite Area	1665.72 sq. ft.	1693.161sq. ft.
Balcony Area	800.94 sq. ft.	817.63 sq. ft.
Total Area	2466.66 sq. ft.	2510.79 sq. ft.

# TOWNHOUSE

1	PWD ROOM	1.7m x 1.6m
2	BATH	2.2m x 1.6m
3	LAUNDRY	1.3m x 1.1m
4	STORE	2.2m x 2.4m
5	KITCHEN	2.6m x 5.4m
6	LIVING	5.6m x 5.5m
7	BALCONY	MIN. 6.4m wide
8	BATH	3m x 3m
9	BEDROOM	4.0m x 4.4m
10	BATH	2.9m x 2.0m
11	BEDROOM	4.1m x 4.6m
12	BALCONY	MIN. 1.3m wide

\*All images used for illustrative purposes only and do not represent the actual size, feature specificatons, fitting, and furnishing. The developer reserves the right to make revision / alterations, at its absolute discretion, without any liability whatsoever.





LEVEL 12

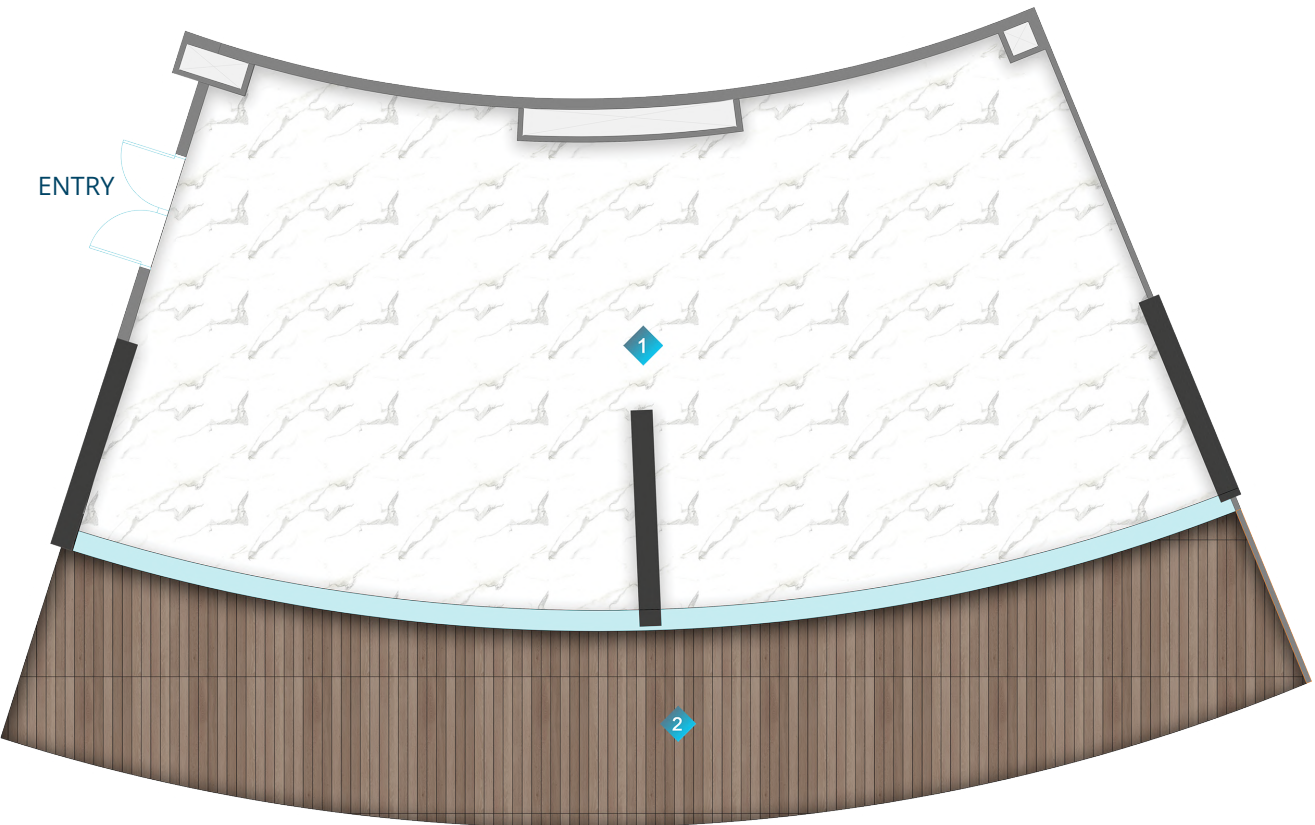
# PENTHOUSE

1	KITCHEN	6.3m x 5.2m	10	BEDROOM	4.05m x 6.7m
2	LIVING	16.3m x 7.4m	11	BATH	2.4m x 2.7m
3	PWD ROOM	1.6m x 1.2m	12	BEDROOM	10.1m x 6m
4	BATH	2.8m x 1.5m	13	BATH	3.4m x 5.3m
5	STUDY	3.6m x 5.3m	14	BEDROOM	5.4m x 4.2m
6	BEDROOM	4.2m x 3.1m	15	BATH	2.5m x 3.4m
7	BATH	2.3m x 2.3m	16	BALCONY	MIN. 1.2 m
8	BEDROOM	4m x 6m	17	LAUNDRY	1m x 1.2m
9	BATH	3m x 2.4m	18	PRIVATE POOL	

	From	To
Suite Area	5547.72 sq. ft.	5549.44sq. ft.
Balcony Area	3111.42 sq. ft.	3111.52 sq. ft.
Total Area	8659.14 sq. ft.	8660.97 sq. ft.

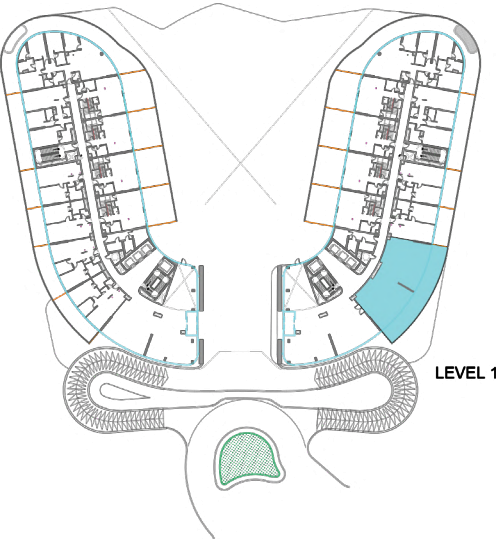
\*All images used for illustrative purposes only and do not represent the actual size, feature specificatons, fitting, and furnishing. The developer reserves the right to make revision / alterations, at its absolute discretion, without any liability whatsoever.





# RETAIL

1	RETAIL	21.2m x 9.6m
2	BALCONY	21.2m x 3.4m



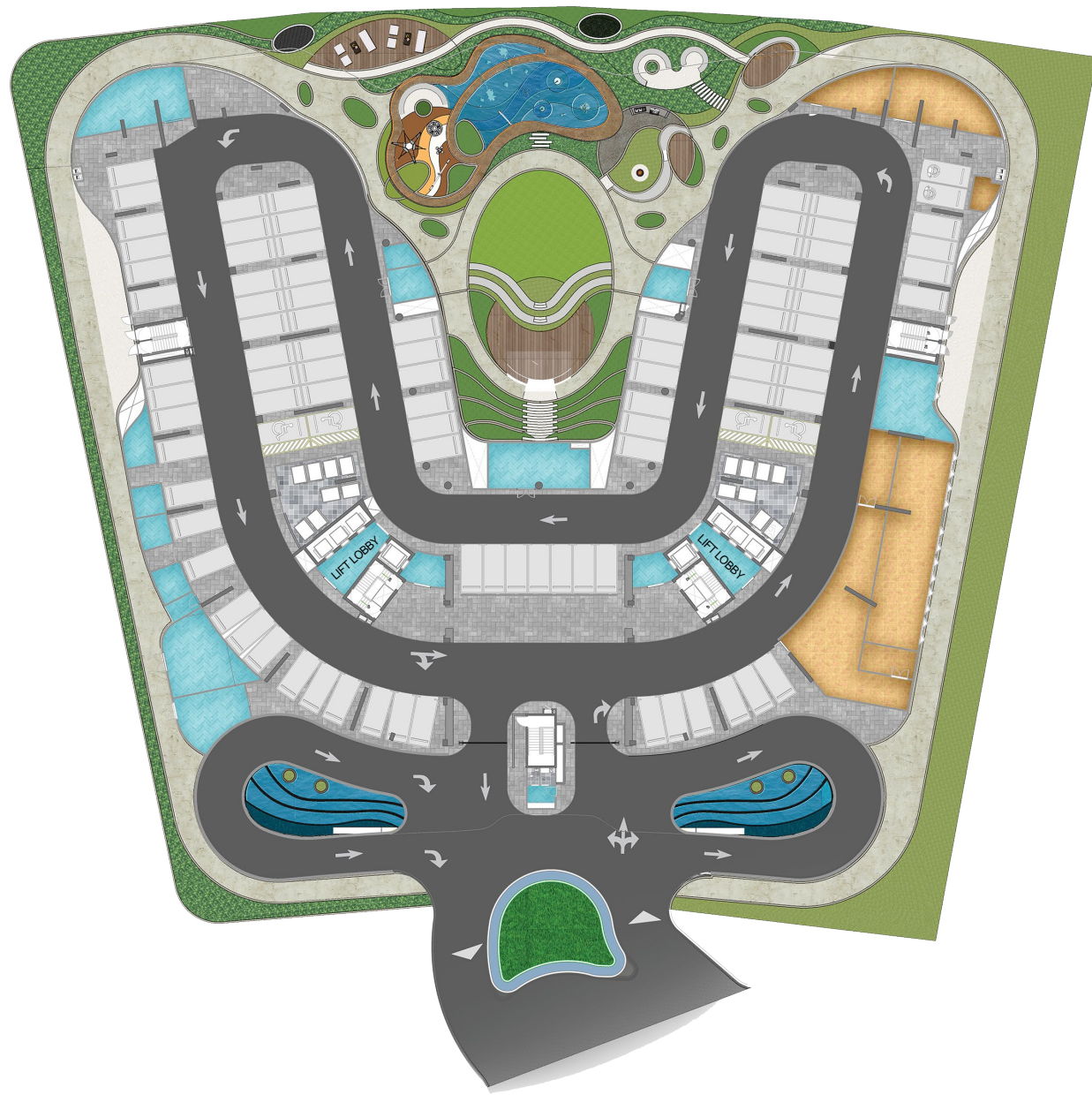
Suite Area	1937.72sq. ft.
Balcony Area	868.22 sq. ft.
Total Area	2805.94 sq. ft.

\*All images used for illustrative purposes only and do not represent the actual size, feature specificatons, fitting, and furnishing. The developer reserves the right to make revision / alterations, at its absolute discretion, without any liability whatsoever.

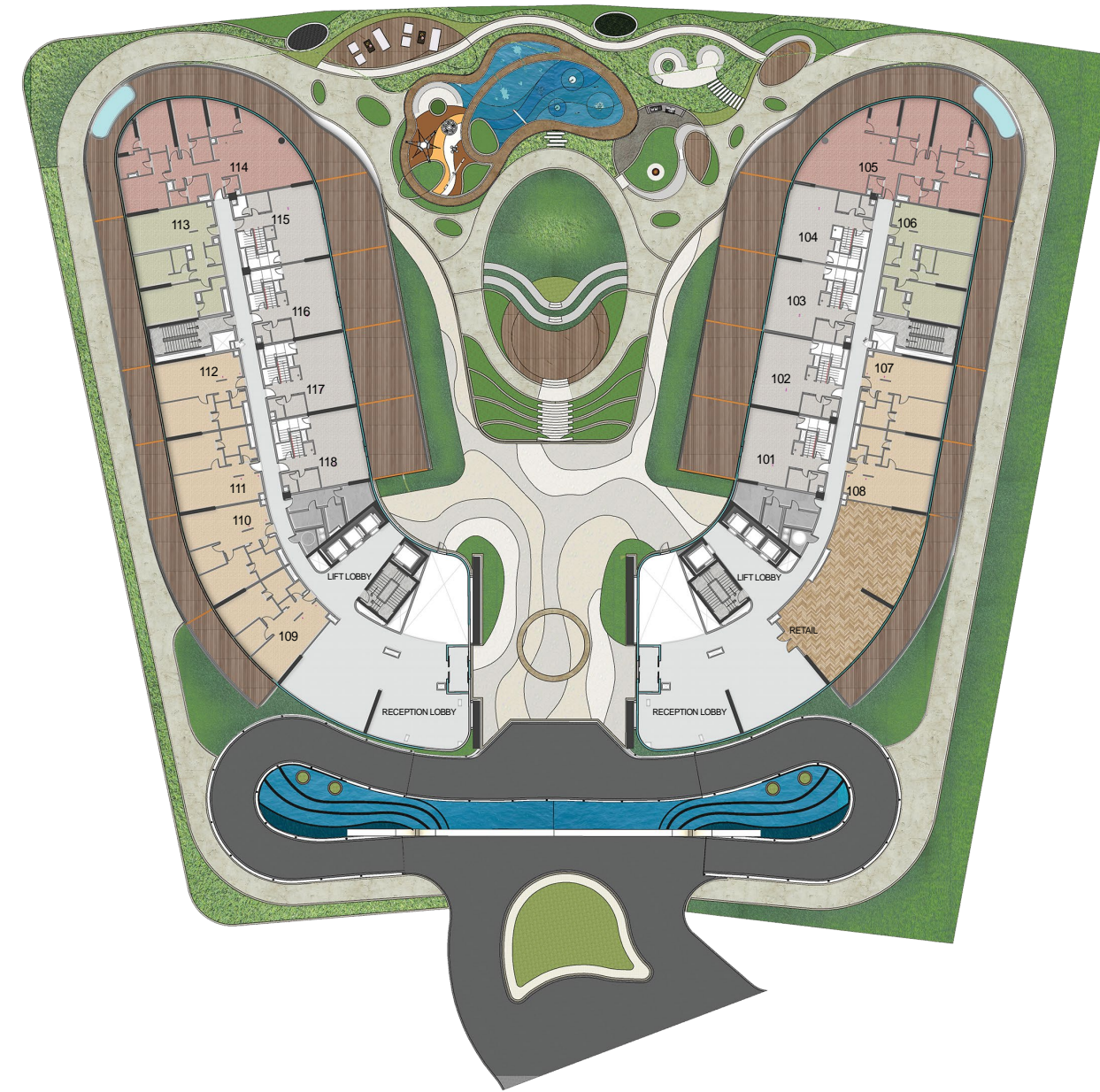


# FLOOR PLANS





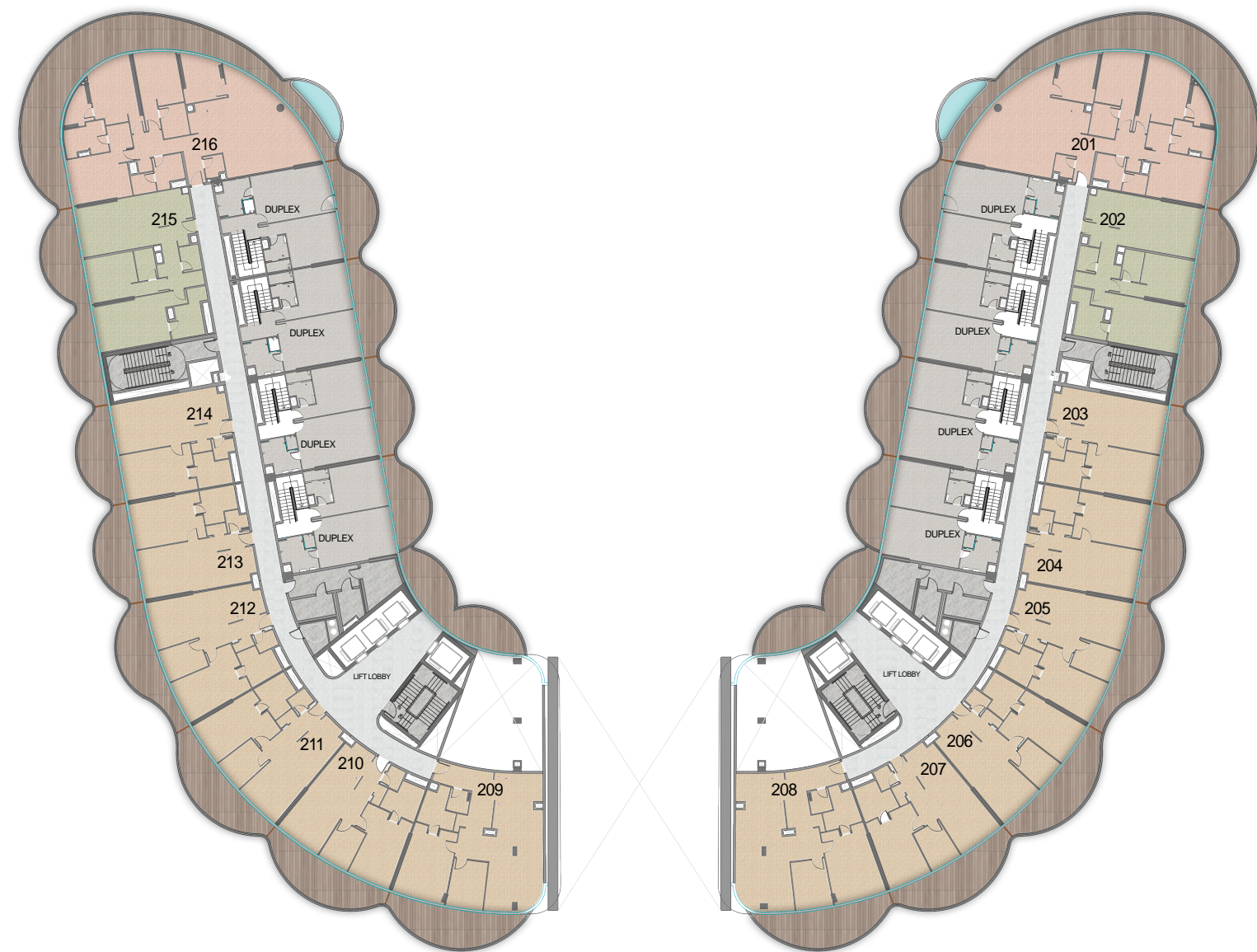
# GROUND FLOOR



# LEVEL 1

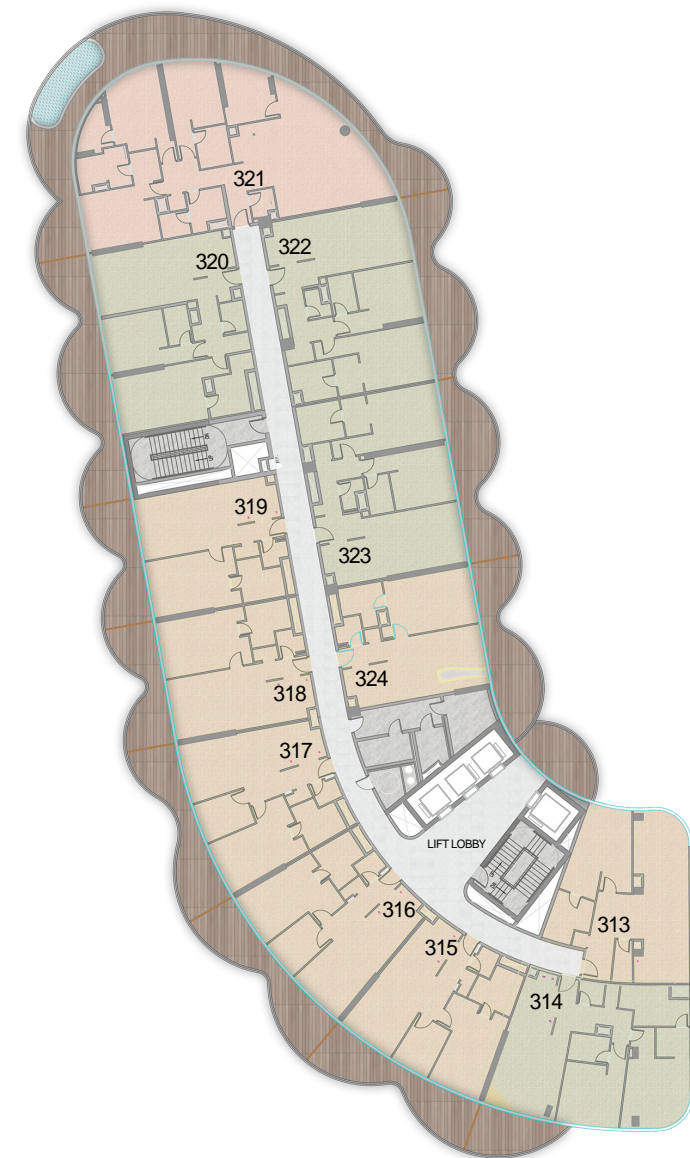
- 1BR UNITS
- 2BR UNITS
- 3BR UNITS
- DUPLEX





## LEVEL 2

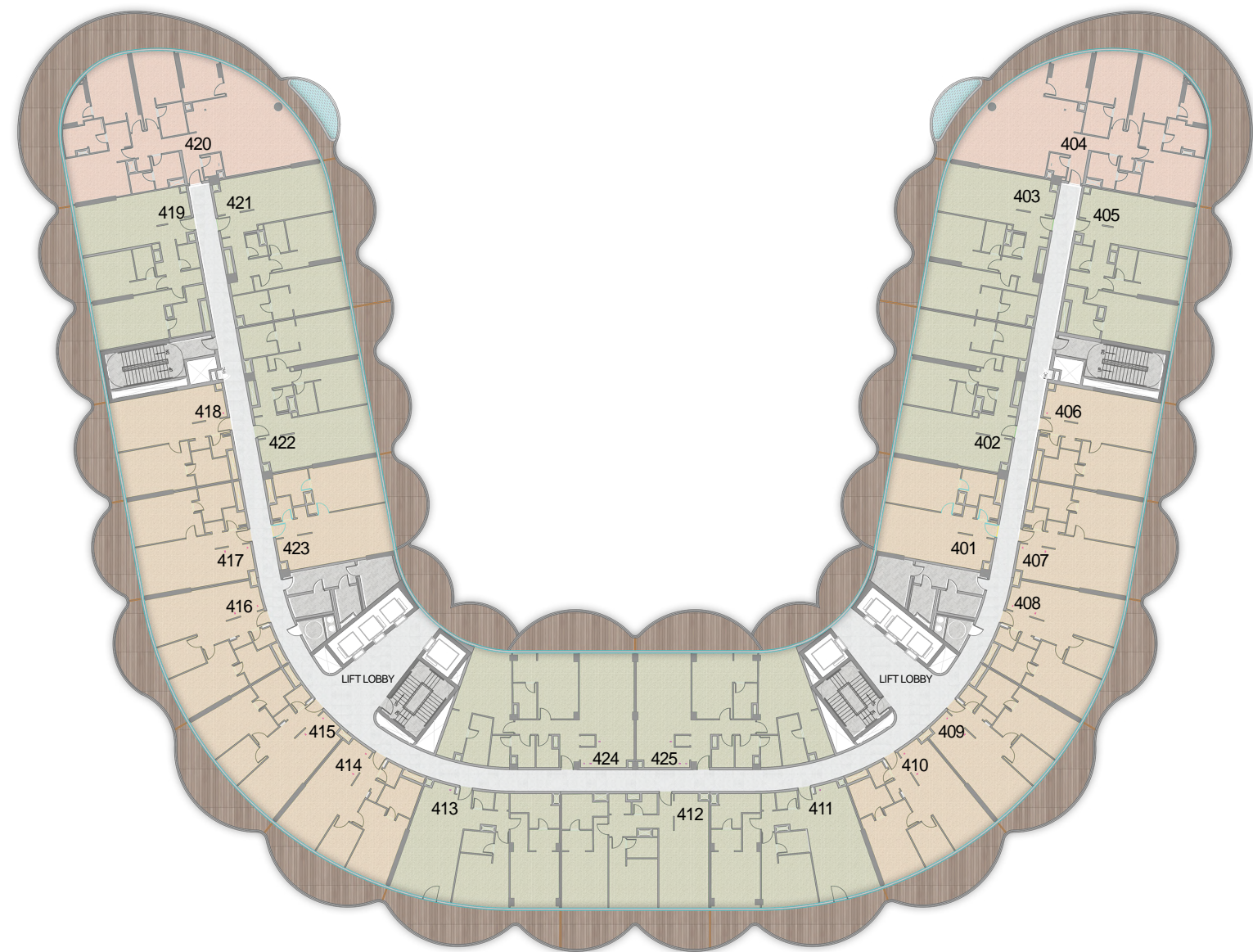
- 1BR UNITS
- 2BR UNITS
- 3BR UNITS
- DUPLEX



## LEVEL 3

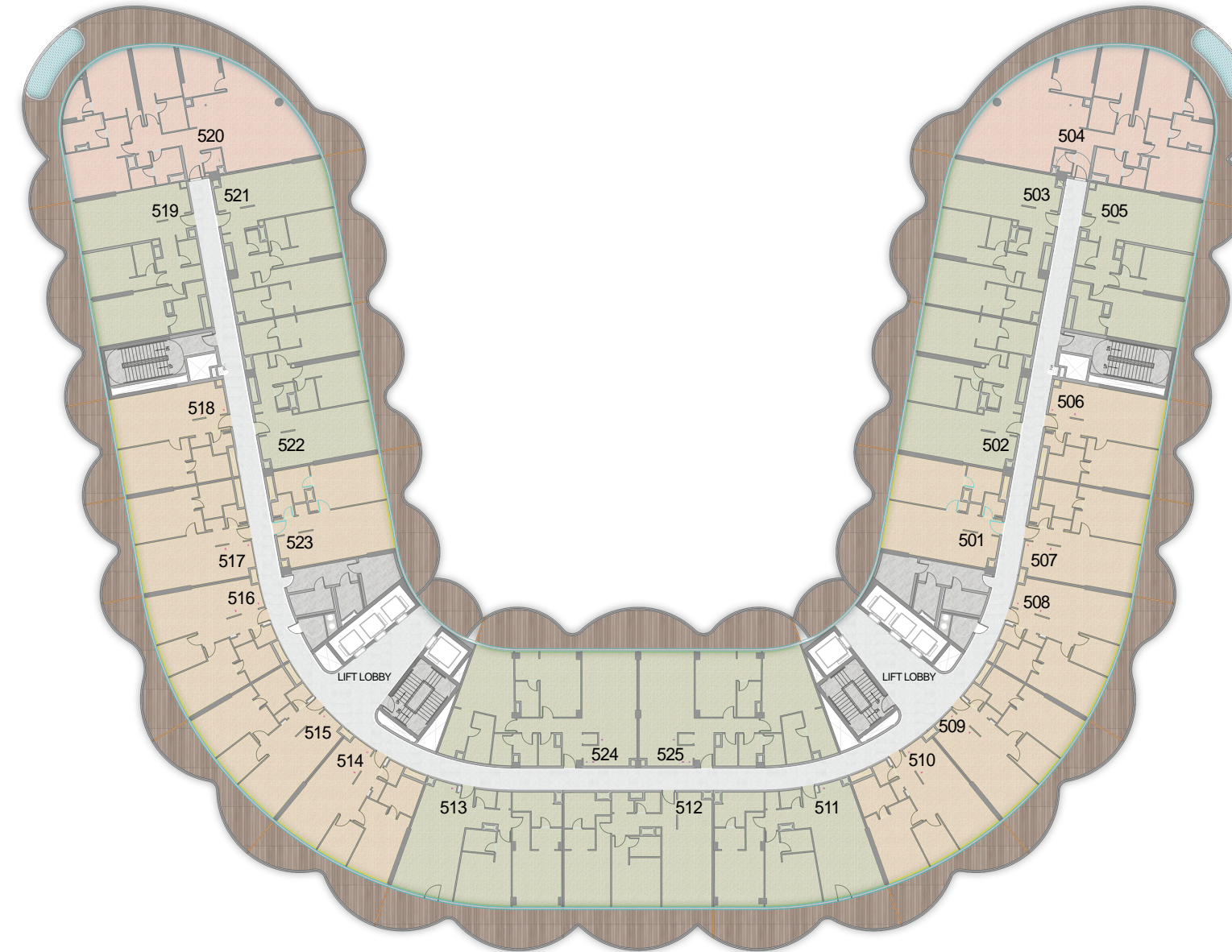
- 1BR UNITS
- 2BR UNITS
- 3BR UNITS





# LEVEL 4

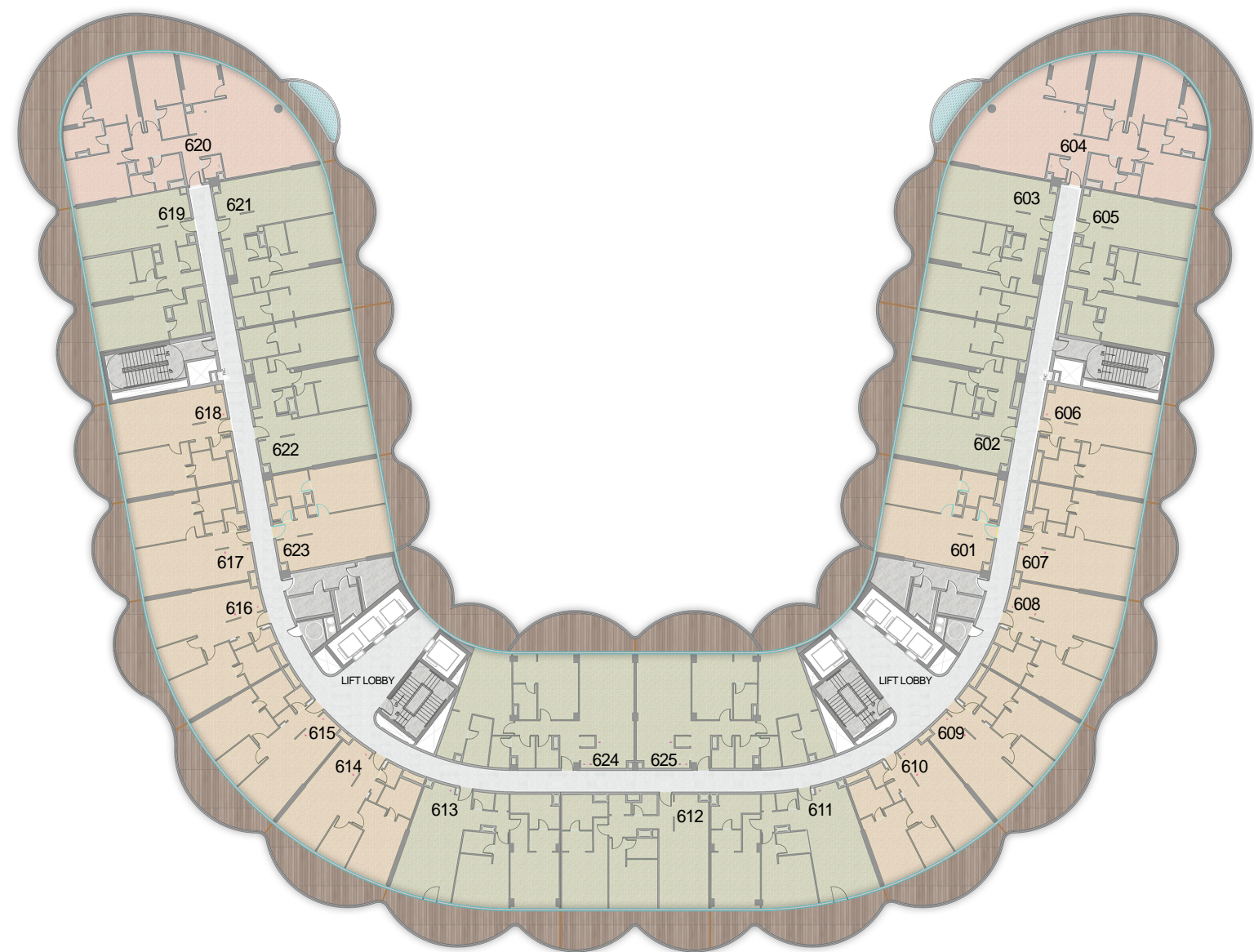
- 1BR UNITS
- 2BR UNITS
- 3BR UNITS



# LEVEL 5

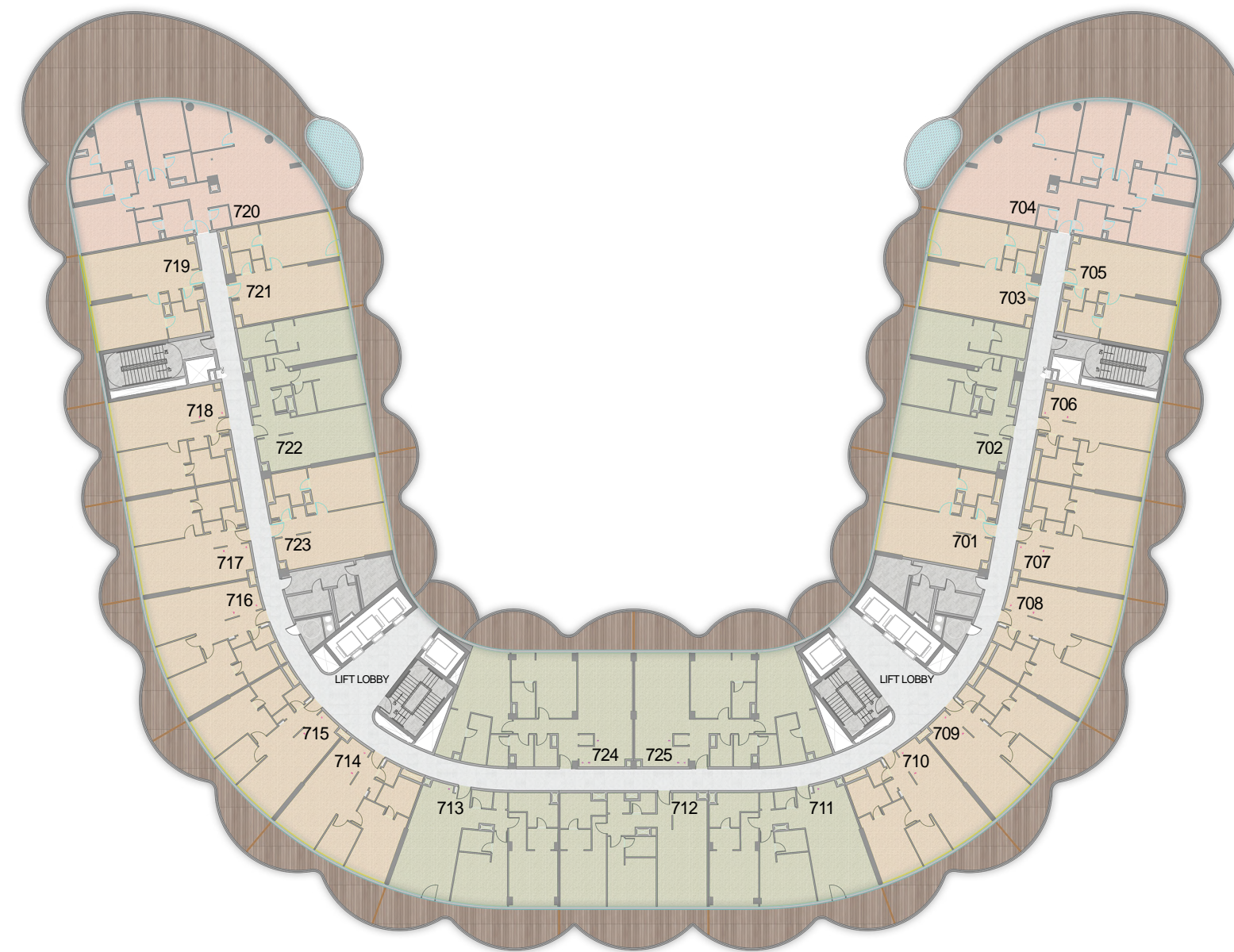
- 1BR UNITS
- 2BR UNITS
- 3BR UNITS





## LEVEL 6

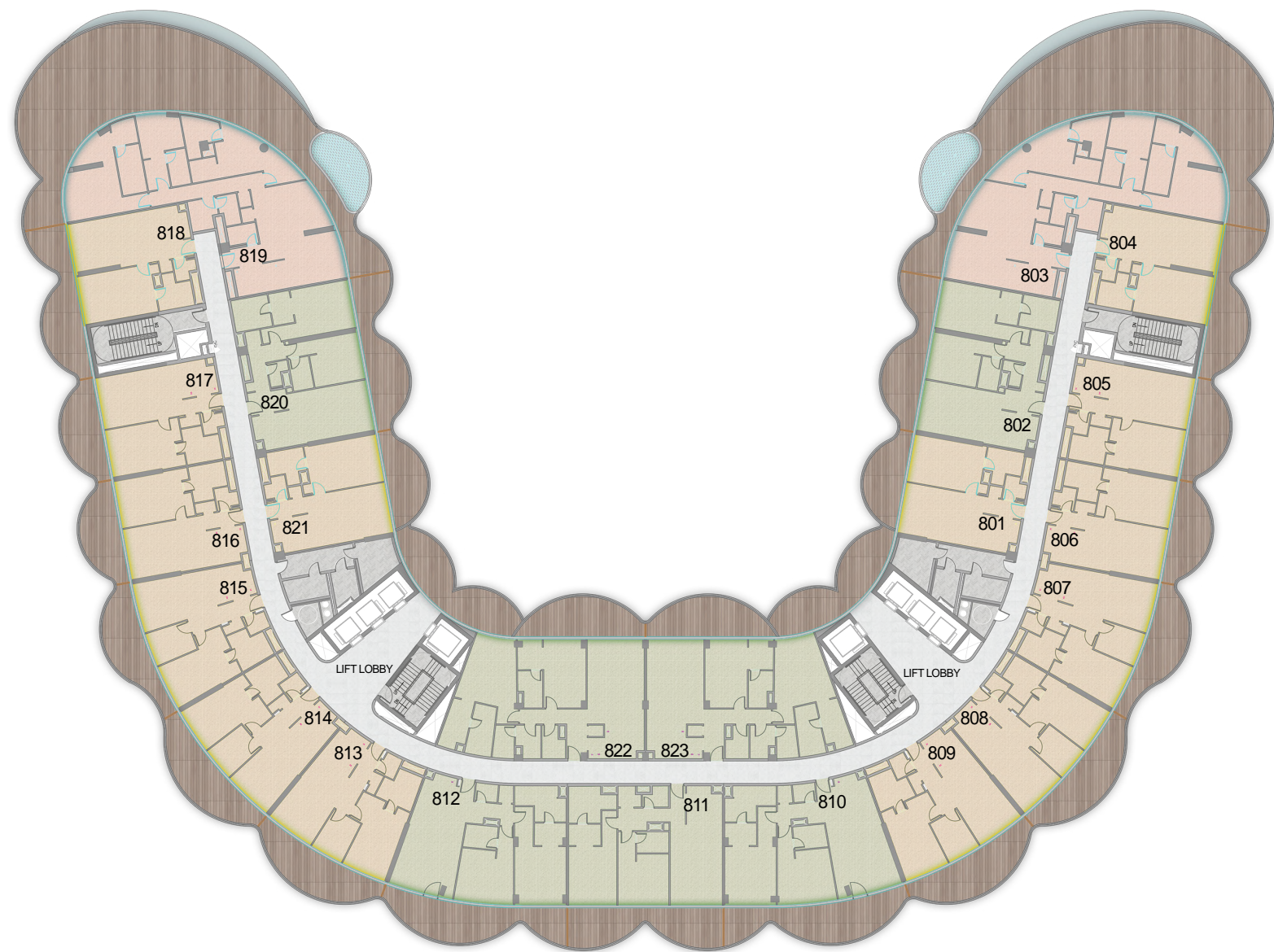
- 1BR UNITS
- 2BR UNITS
- 3BR UNITS



## LEVEL 7

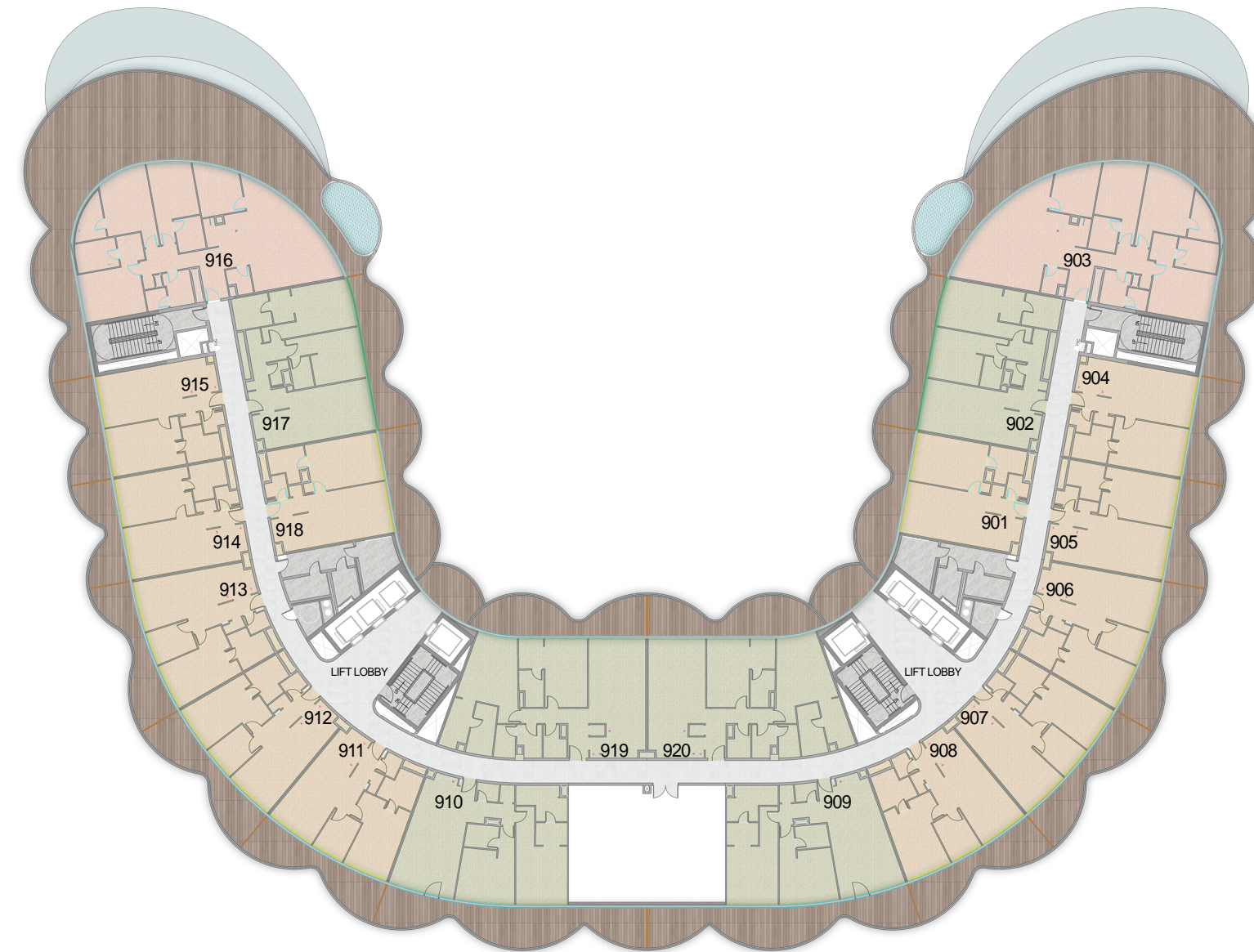
- 1BR UNITS
- 2BR UNITS
- 3BR UNITS





# LEVEL 8

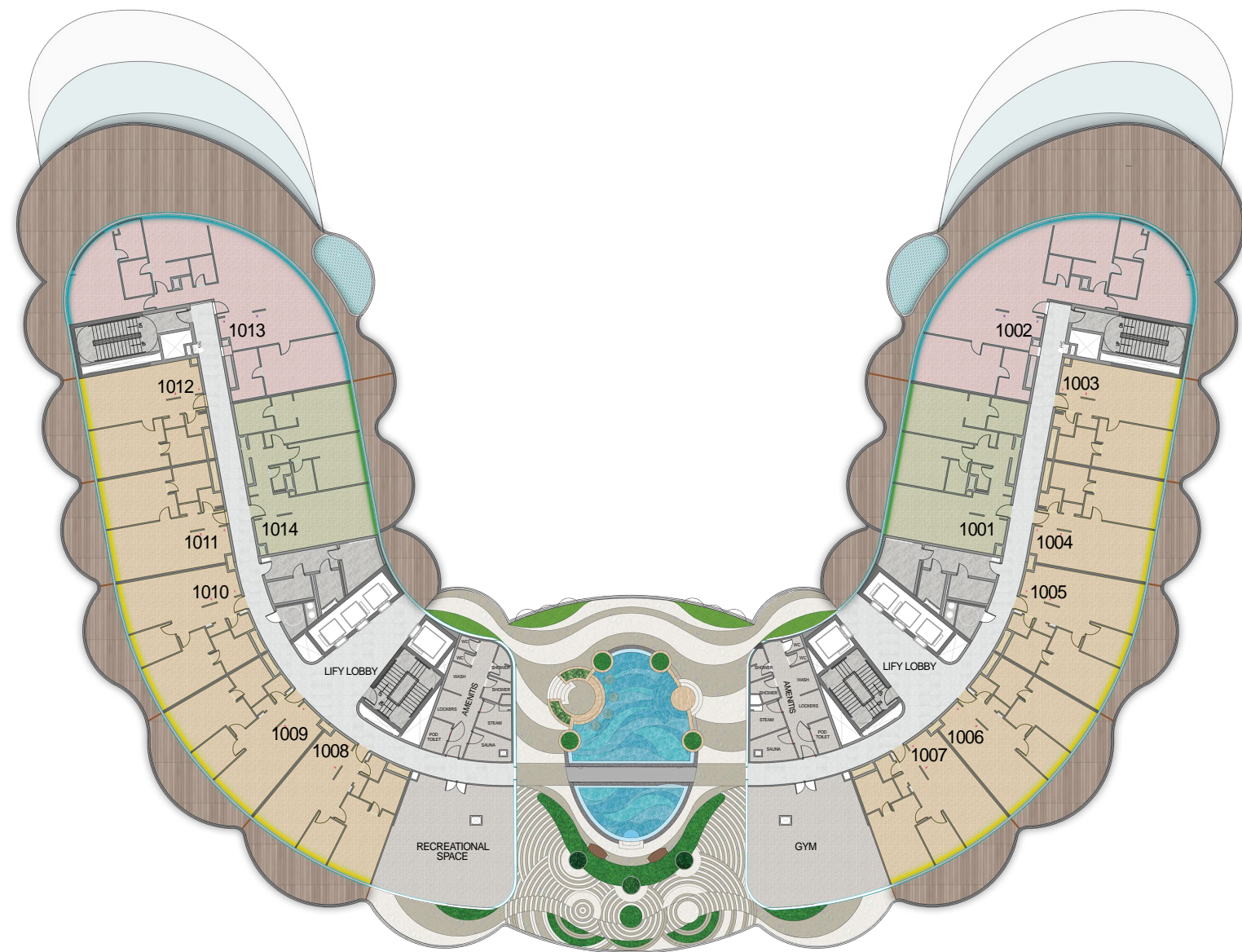
- 1BR UNITS
- 2BR UNITS
- 3BR UNITS



# LEVEL 9

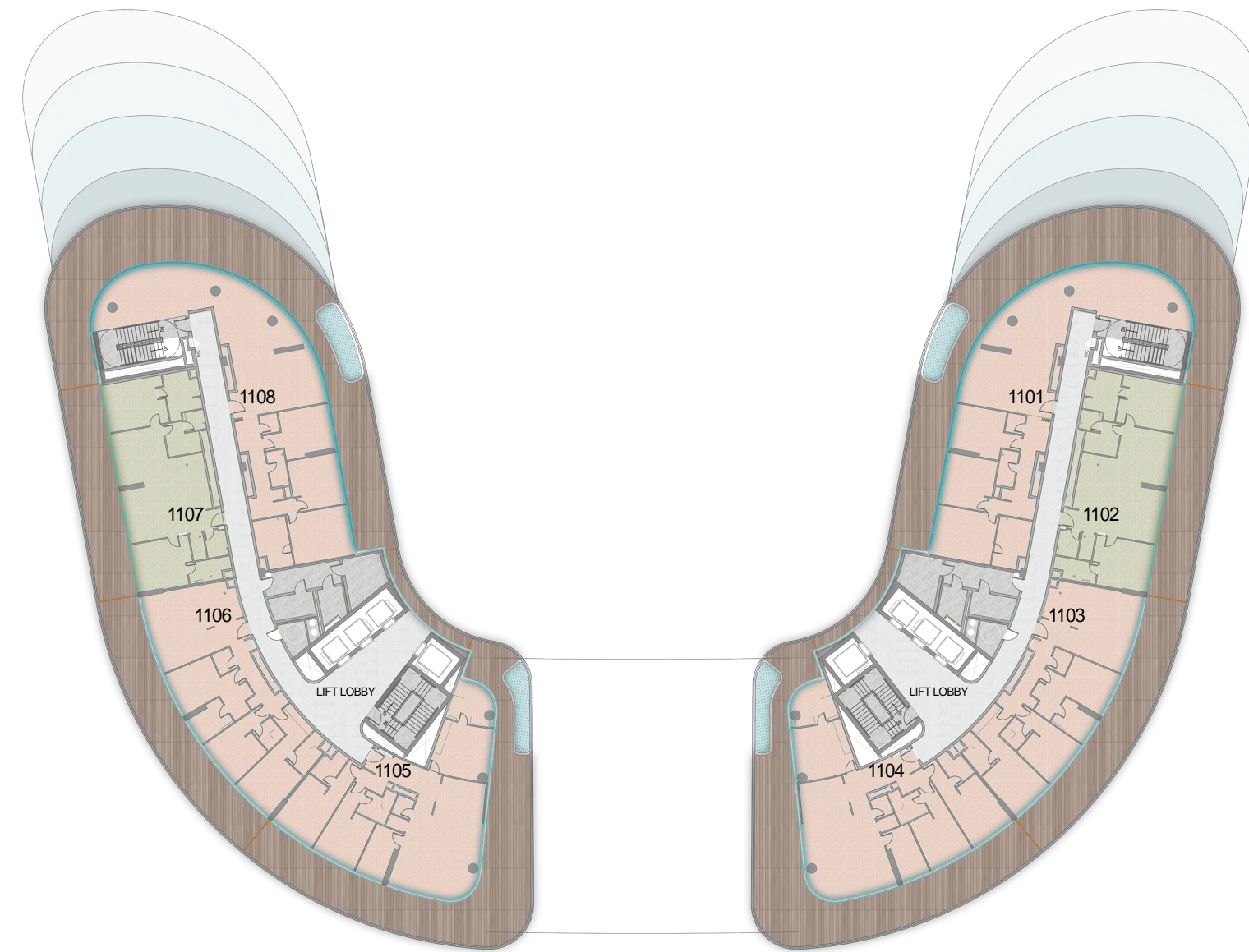
- 1BR UNITS
- 2BR UNITS
- 3BR UNITS





## LEVEL 10

- 1BR UNITS
- 2BR UNITS
- 3BR UNITS



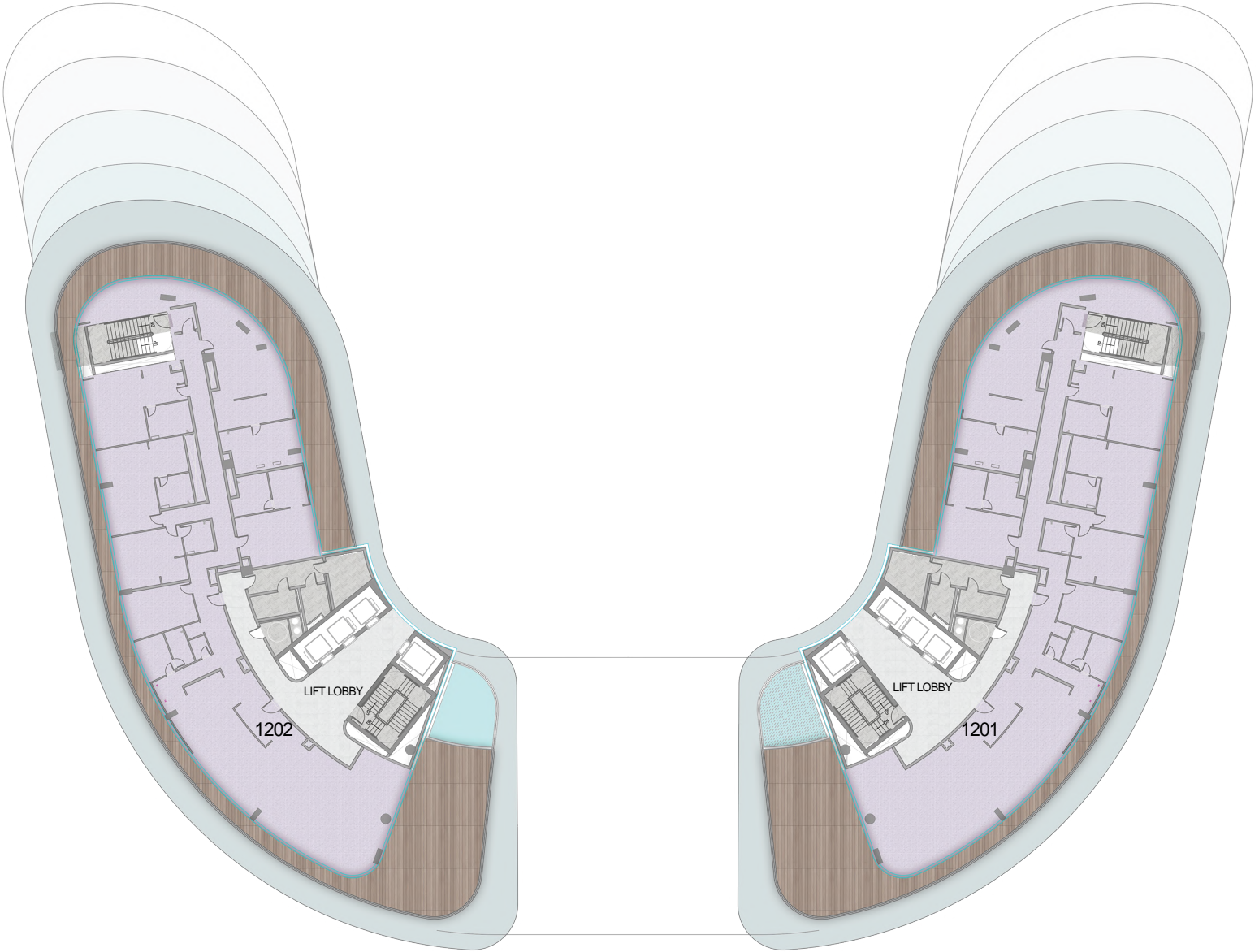
## LEVEL 11

- 1BR UNITS
- 2BR UNITS
- 3BR UNITS





# PENTHOUSES



PENTHOUSES

\*All images used for illustrative purposes only and do not represent the actual size, feature specifications, fitting, and furnishing. The developer reserves the right to make revision / alterations, at its absolute discretion, without any liability whatsoever.



