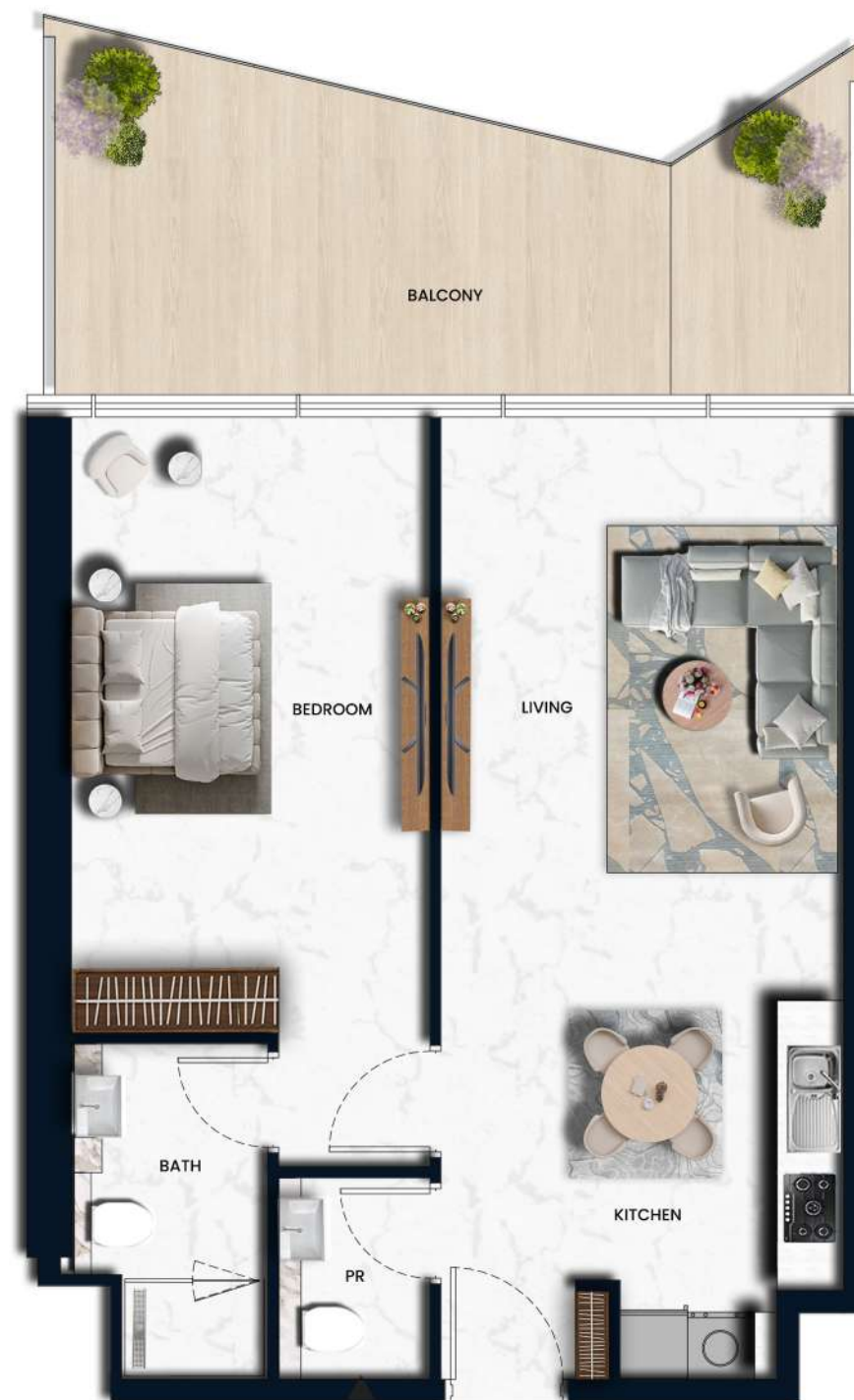


The background features a soft, painterly illustration of a surfer riding a wave. The surfer is depicted in a dynamic, crouched position, leaning into the turn. The wave is rendered with flowing, translucent blue and white lines, giving it a sense of movement and depth. The overall color palette is light and airy, with a gradient from pale yellow at the top to soft blue at the bottom.

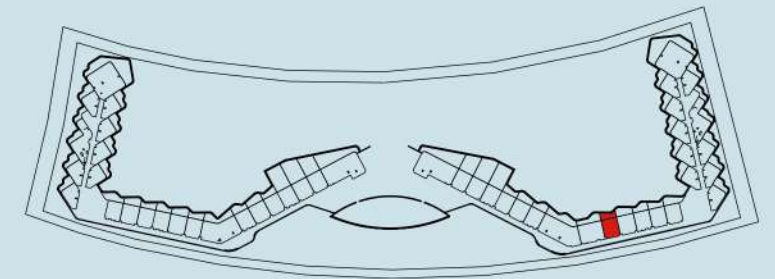
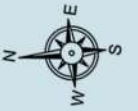
# SORA

BEACH RESIDENCES



# KEY PLAN

LEVEL-3



## 1BHK TYPE 1

Internal Living Area 664.03 sq.ft.

Outdoor Living Area 215.82 sq.ft.

Total Living Area 879.84 sq.ft.

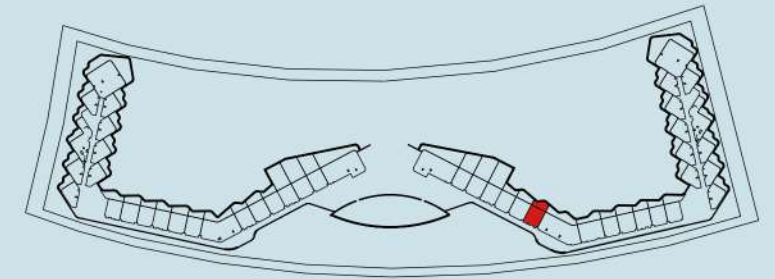
### DISCLAIMER:

All measurements are indicative and are for marketing purposes only. All efforts have been made to ensure their accuracy, however these layouts are subject to change at the discretion of the developer and should not be relied upon as final. The actual area may vary from the stated area and the developer reserves the right to make the revisions/alterations, at its absolute discretion, without any liability whatsoever



# KEY PLAN

LEVEL-3



## 1BHK TYPE 1A

Internal Living Area 658.32 sq.ft.

Outdoor Living Area 245.63 sq.ft.

**Total Living Area 903.95 sq.ft.**

### DISCLAIMER:

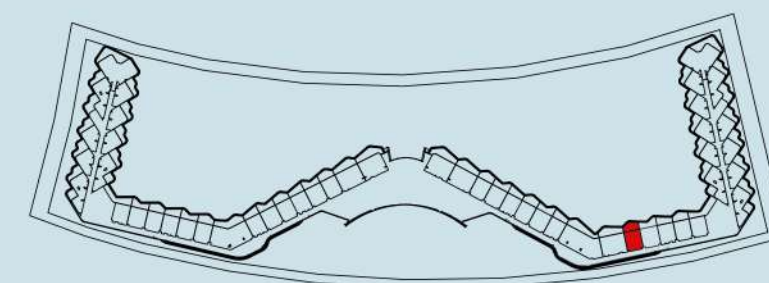
All measurements are indicative and are for marketing purposes only. All efforts have been made to ensure their accuracy, however these layouts are subject to change at the discretion of the developer and should not be relied upon as final. The actual area may vary from the stated area and the developer reserves the right to make the revisions/alterations, at its absolute discretion, without any liability whatsoever





# KEY PLAN

LEVEL-4



## 1BHK TYPE 2

A-415

Internal Living Area	717.52	sq.ft.
Outdoor Living Area	248.22	sq.ft.

Total Living Area	965.74	sq.ft.
-------------------	--------	--------

### DISCLAIMER:

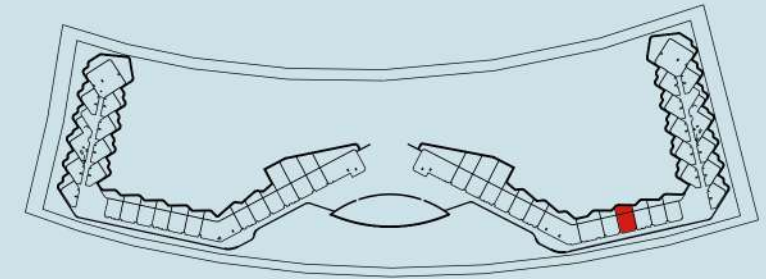
All measurements are indicative and are for marketing purposes only. All efforts have been made to ensure their accuracy, however these layouts are subject to change at the discretion of the developer and should not be relied upon as final. The actual area may vary from the stated area and the developer reserves the right to make the revisions/alterations, at its absolute discretion, without any liability whatsoever





# KEY PLAN

LEVEL-3



## 1BHK TYPE 2

Internal Living Area 717.52 sq.ft.

Outdoor Living Area 282.23 sq.ft.

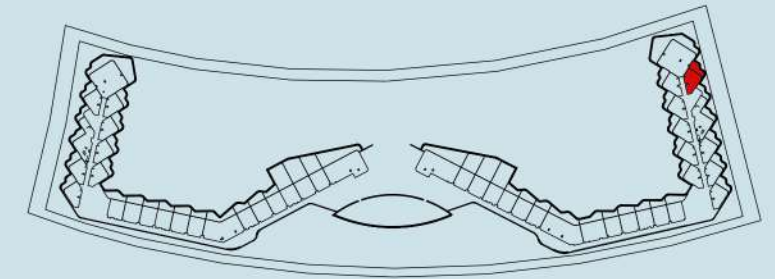
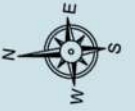
**Total Living Area 999.75 sq.ft.**

### DISCLAIMER:

All measurements are indicative and are for marketing purposes only. All efforts have been made to ensure their accuracy, however these layouts are subject to change at the discretion of the developer and should not be relied upon as final. The actual area may vary from the stated area and the developer reserves the right to make the revisions/alterations, at its absolute discretion, without any liability whatsoever

# KEY PLAN

LEVEL-3



## 1BHK TYPE 4

Internal Living Area 633.78 sq.ft.

Outdoor Living Area 254.03 sq.ft.

**Total Living Area 887.81 sq.ft.**

### DISCLAIMER:

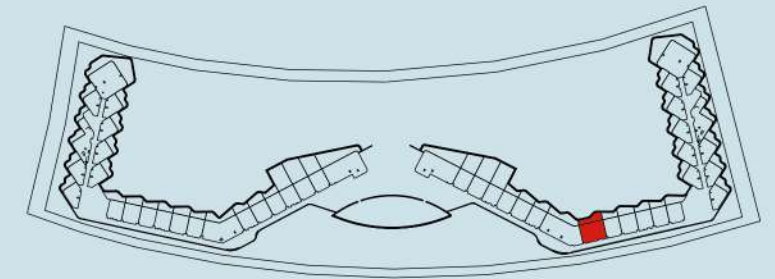
All measurements are indicative and are for marketing purposes only. All efforts have been made to ensure their accuracy, however these layouts are subject to change at the discretion of the developer and should not be relied upon as final. The actual area may vary from the stated area and the developer reserves the right to make the revisions/alterations, at its absolute discretion, without any liability whatsoever





# KEY PLAN

LEVEL-3



## 2BHK TYPE 1

Internal Living Area 1028.17 sq.ft.

Outdoor Living Area 329.48 sq.ft.

**Total Living Area 1357.65 sq.ft.**

### DISCLAIMER:

All measurements are indicative and are for marketing purposes only. All efforts have been made to ensure their accuracy, however these layouts are subject to change at the discretion of the developer and should not be relied upon as final. The actual area may vary from the stated area and the developer reserves the right to make the revisions/alterations, at its absolute discretion, without any liability whatsoever



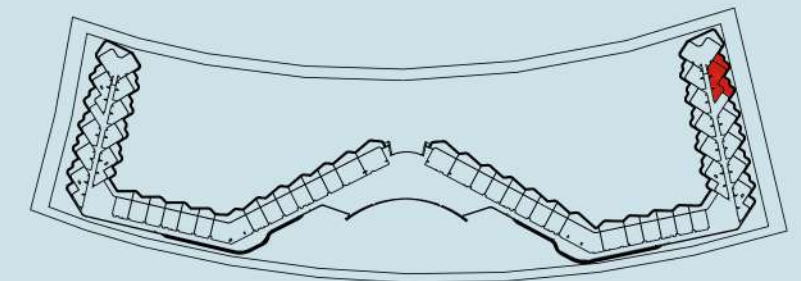


#### DISCLAIMER:

All measurements are indicative and are for marketing purposes only. All efforts have been made to ensure their accuracy, however these layouts are subject to change at the discretion of the developer and should not be relied upon as final. The actual area may vary from the stated area and the developer reserves the right to make the revisions/alterations, at its absolute discretion, without any liability whatsoever

## KEY PLAN

LEVEL-4



### 2BHK TYPE 2

Internal Living Area 902.12 sq.ft.

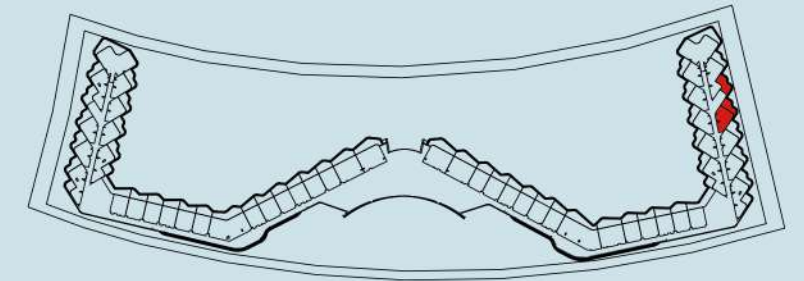
Outdoor Living Area 572.10 sq.ft.

**Total Living Area 1474.23 sq.ft.**



# KEY PLAN

LEVEL-3



## 2BHK TYPE 3

Internal Living Area 1099.64 sq.ft.

Outdoor Living Area 390.08 sq.ft.

**Total Living Area 1489.73 sq.ft.**

### DISCLAIMER:

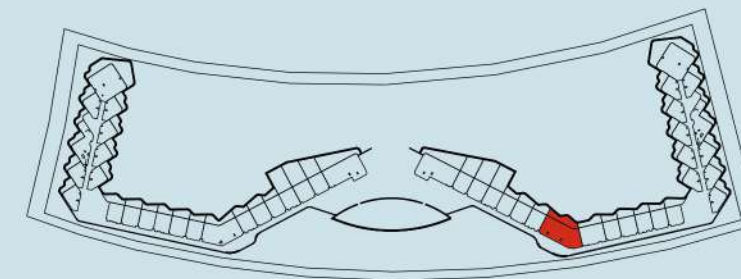
All measurements are indicative and are for marketing purposes only. All efforts have been made to ensure their accuracy, however these layouts are subject to change at the discretion of the developer and should not be relied upon as final. The actual area may vary from the stated area and the developer reserves the right to make the revisions/alterations, at its absolute discretion, without any liability whatsoever





# KEY PLAN

LEVEL-3



## 3BHK TYPE 2

Internal Living Area 1777.44 sq.ft.

Outdoor Living Area 492.23 sq.ft.

**Total Living Area 2269.68 sq.ft.**

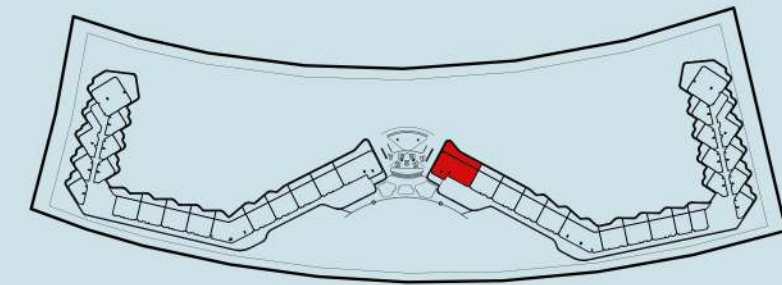
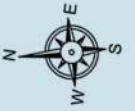
### DISCLAIMER:

All measurements are indicative and are for marketing purposes only. All efforts have been made to ensure their accuracy, however these layouts are subject to change at the discretion of the developer and should not be relied upon as final. The actual area may vary from the stated area and the developer reserves the right to make the revisions/alterations, at its absolute discretion, without any liability whatsoever



# KEY PLAN

LEVEL-15



## 3BHK TYPE 3

A-1520

Internal Living Area 1844.18 sq.ft.

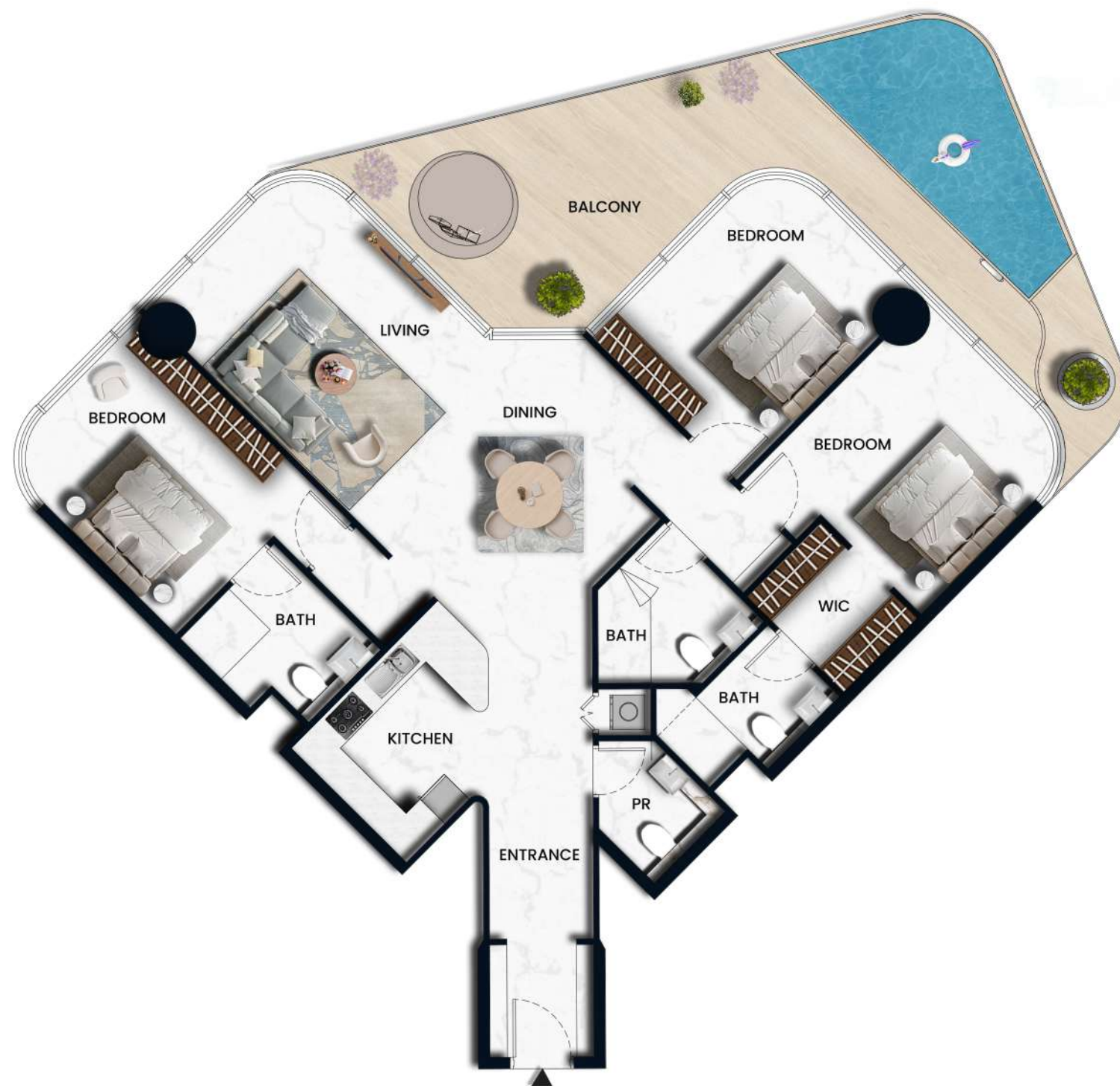
Outdoor Living Area 709.02 sq.ft.

Total Living Area 2553.20 sq.ft.



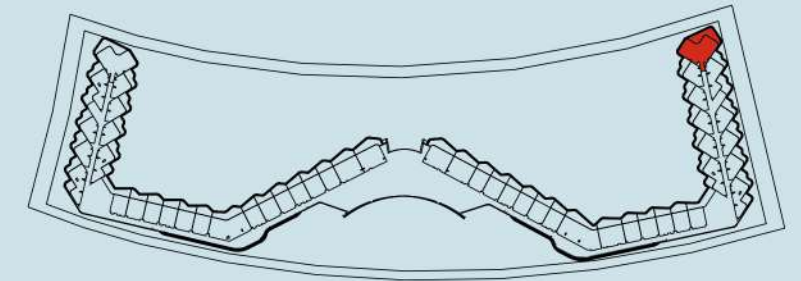
### DISCLAIMER:

All measurements are indicative and are for marketing purposes only. All efforts have been made to ensure their accuracy, however these layouts are subject to change at the discretion of the developer and should not be relied upon as final. The actual area may vary from the stated area and the developer reserves the right to make the revisions/alterations, at its absolute discretion, without any liability whatsoever



# KEY PLAN

LEVEL-4



## 3BHK TYPE 5

Internal Living Area 1555.28 sq.ft.

Outdoor Living Area 489.44 sq.ft.

Total Living Area 2044.71 sq.ft.

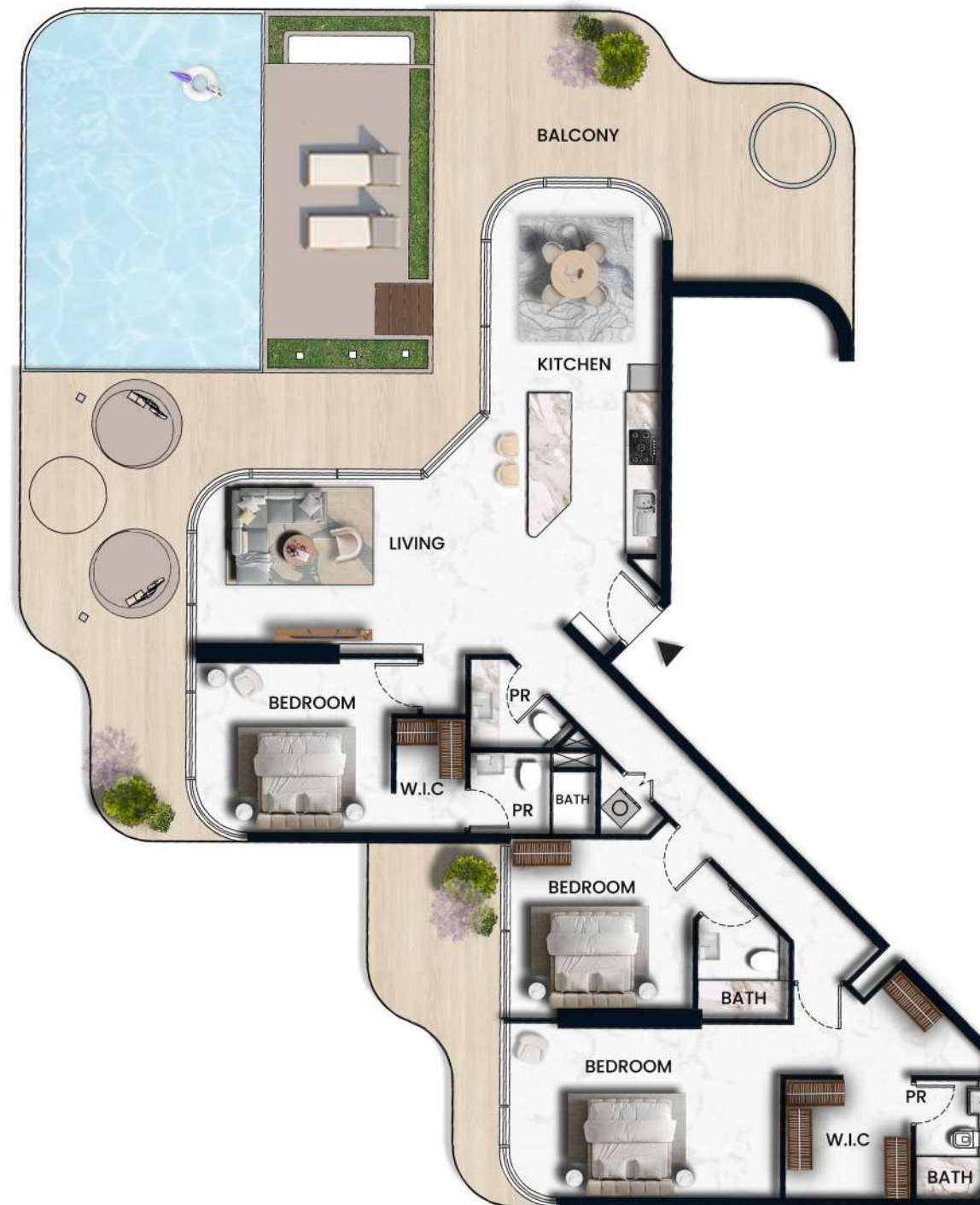
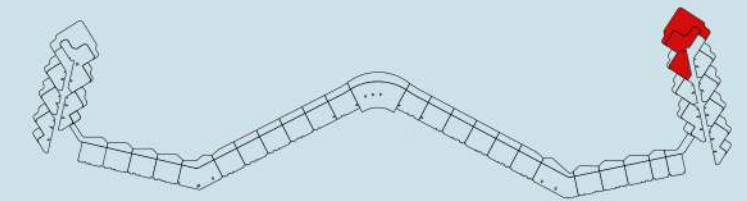
### DISCLAIMER:

All measurements are indicative and are for marketing purposes only. All efforts have been made to ensure their accuracy, however these layouts are subject to change at the discretion of the developer and should not be relied upon as final. The actual area may vary from the stated area and the developer reserves the right to make the revisions/alterations, at its absolute discretion, without any liability whatsoever



# KEY PLAN

LEVEL-16



## 3BHK TYPE 6

Internal Living Area 1746.44 sq.ft.

Outdoor Living Area 1730.73 sq.ft.

Total Living Area 3477.17 sq.ft.

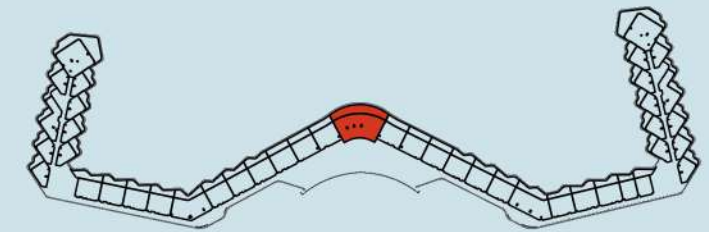
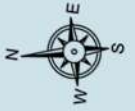
### DISCLAIMER:

All measurements are indicative and are for marketing purposes only. All efforts have been made to ensure their accuracy, however these layouts are subject to change at the discretion of the developer and should not be relied upon as final. The actual area may vary from the stated area and the developer reserves the right to make the revisions/alterations, at its absolute discretion, without any liability whatsoever



# KEY PLAN

LEVEL-9



## 4BHK TYPE 1

Internal Living Area 2386.25 sq.ft.

Outdoor Living Area 1103.84 sq.ft.

Total Living Area 3490.09 sq.ft.

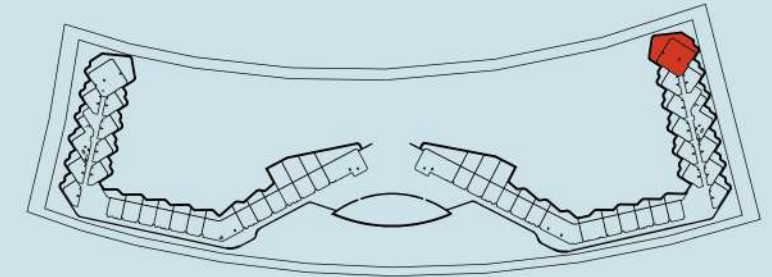
### DISCLAIMER:

All measurements are indicative and are for marketing purposes only. All efforts have been made to ensure their accuracy, however these layouts are subject to change at the discretion of the developer and should not be relied upon as final. The actual area may vary from the stated area and the developer reserves the right to make the revisions/alterations, at its absolute discretion, without any liability whatsoever



# KEY PLAN

LEVEL-3



## 4BHK TYPE 2

Internal Living Area 1884.55 sq.ft.

Outdoor Living Area 1233.76 sq.ft.

**Total Living Area 3118.30 sq.ft.**

### DISCLAIMER:

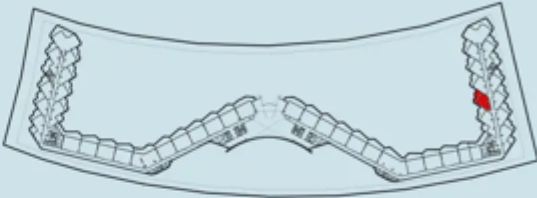
All measurements are indicative and are for marketing purposes only. All efforts have been made to ensure their accuracy, however these layouts are subject to change at the discretion of the developer and should not be relied upon as final. The actual area may vary from the stated area and the developer reserves the right to make the revisions/alterations, at its absolute discretion, without any liability whatsoever

SORA Beach Residences - A-610



KEY PLAN

LEVEL-6



1BHK TYPE 3

A-610

Internal Living Area 640.56 sq.ft.

Outdoor Living Area 247.57 sq.ft.

Total Living Area 888.13 sq.ft.

DISCLAIMER:

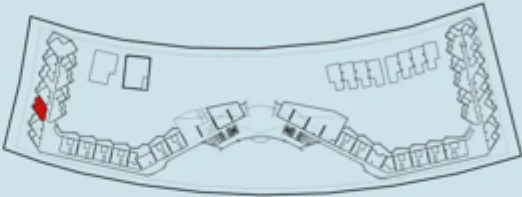
All measurements are indicative and are for marketing purposes only. All efforts have been made to ensure their accuracy, however these layouts are subject to change at the discretion of the developer and should not be relied upon as final. The actual area may vary from the stated area and the developer reserves the right to make the revisions/alterations, at its absolute discretion, without any liability whatsoever





# KEY PLAN

LEVEL-2



## 1BHK TYPE 3

B-202

Internal Living Area 636.15 sq.ft.

Outdoor Living Area 286.21 sq.ft.

Total Living Area 922.36 sq.ft.

**DISCLAIMER:**

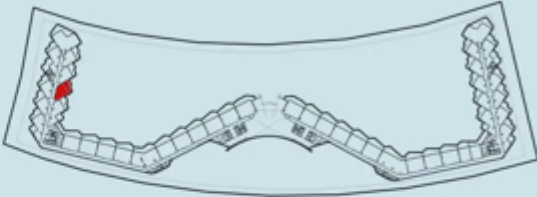
All measurements are indicative and are for marketing purposes only. All efforts have been made to ensure their accuracy, however these layouts are subject to change at the discretion of the developer and should not be relied upon as final. The actual area may vary from the stated area and the developer reserves the right to make the revisions/alterations, at its absolute discretion, without any liability whatsoever

SORA Beach Residences - B-608



KEY PLAN

LEVEL-6



1BHK TYPE 3

B-608

Internal Living Area	640.56 sq.ft.
Outdoor Living Area	247.35 sq.ft.

Total Living Area	887.91 sq.ft.
-------------------	---------------

DISCLAIMER:

All measurements are indicative and are for marketing purposes only. All efforts have been made to ensure their accuracy, however these layouts are subject to change at the discretion of the developer and should not be relied upon as final. The actual area may vary from the stated area and the developer reserves the right to make the revisions/alterations, at its absolute discretion, without any liability whatsoever

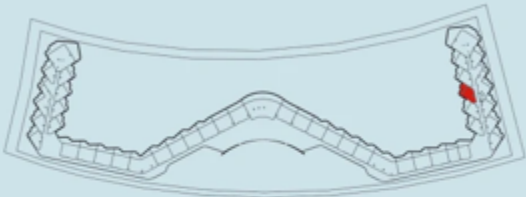


SORA Beach Residences - A-1109



KEY PLAN

LEVEL-11



1BHK TYPE 4

A-1109

Internal Living Area 638.95 sq.ft.

Outdoor Living Area 249.51 sq.ft.

Total Living Area 888.45 sq.ft.

DISCLAIMER:

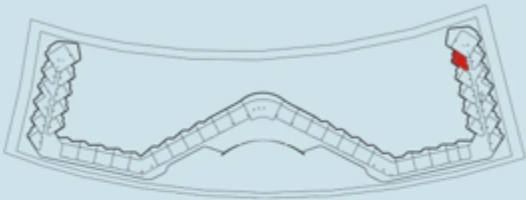
All measurements are indicative and are for marketing purposes only. All efforts have been made to ensure their accuracy, however these layouts are subject to change at the discretion of the developer and should not be relied upon as final. The actual area may vary from the stated area and the developer reserves the right to make the revisions/alterations, at its absolute discretion, without any liability whatsoever

SORA Beach Residences - A-1107



KEY PLAN

LEVEL-11



1BHK TYPE 4

A-1107

Internal Living Area 634.53 sq.ft.

Outdoor Living Area 252.52 sq.ft.

Total Living Area 887.05 sq.ft.

DISCLAIMER:

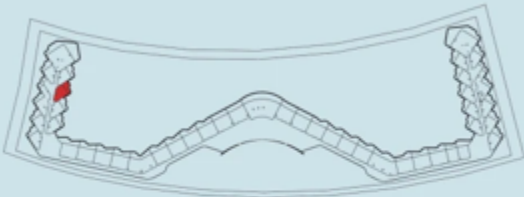
All measurements are indicative and are for marketing purposes only. All efforts have been made to ensure their accuracy, however these layouts are subject to change at the discretion of the developer and should not be relied upon as final. The actual area may vary from the stated area and the developer reserves the right to make the revisions/alterations, at its absolute discretion, without any liability whatsoever





# KEY PLAN

LEVEL-11



## 1BHK TYPE 4

B-1107

Internal Living Area 638.95 sq.ft.

Outdoor Living Area 249.29 sq.ft.

Total Living Area 888.24 sq.ft.

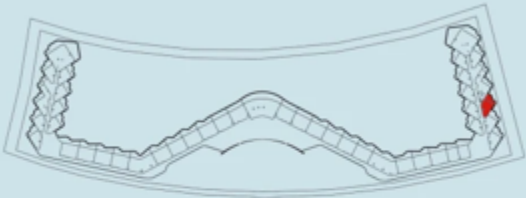
**DISCLAIMER:**

All measurements are indicative and are for marketing purposes only. All efforts have been made to ensure their accuracy, however these layouts are subject to change at the discretion of the developer and should not be relied upon as final. The actual area may vary from the stated area and the developer reserves the right to make the revisions/alterations, at its absolute discretion, without any liability whatsoever



KEY PLAN

LEVEL-11



1BHK TYPE 4

A-1103

Internal Living Area 638.95 sq.ft.

Outdoor Living Area 249.51 sq.ft.

Total Living Area 888.45 sq.ft.

DISCLAIMER:

All measurements are indicative and are for marketing purposes only. All efforts have been made to ensure their accuracy, however these layouts are subject to change at the discretion of the developer and should not be relied upon as final. The actual area may vary from the stated area and the developer reserves the right to make the revisions/alterations, at its absolute discretion, without any liability whatsoever

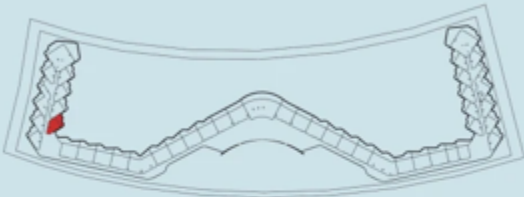


SORA Beach Residences - B-1109



KEY PLAN

LEVEL-11



1BHK TYPE 4

B-1109

Internal Living Area 657.12 sq.ft.

Outdoor Living Area 249.29 sq.ft.

Total Living Area 886.41 sq.ft.

DISCLAIMER:

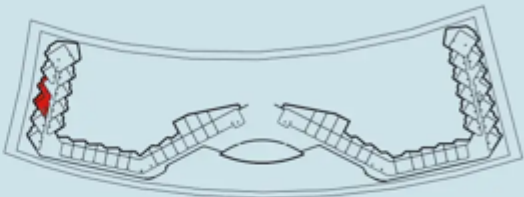
All measurements are indicative and are for marketing purposes only. All efforts have been made to ensure their accuracy, however these layouts are subject to change at the discretion of the developer and should not be relied upon as final. The actual area may vary from the stated area and the developer reserves the right to make the revisions/alterations, at its absolute discretion, without any liability whatsoever

SORA Beach Residences - B-303



KEY PLAN

LEVEL-3



2BHK TYPE 3

B-303

Internal Living Area 1099.64 sq.ft.

Outdoor Living Area 390.41 sq.ft.

Total Living Area 1490.05 sq.ft.

DISCLAIMER:

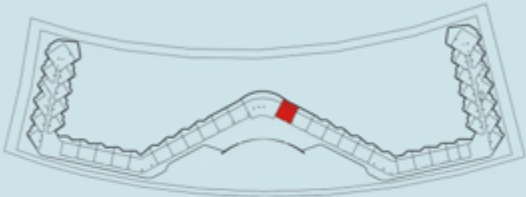
All measurements are indicative and are for marketing purposes only. All efforts have been made to ensure their accuracy, however these layouts are subject to change at the discretion of the developer and should not be relied upon as final. The actual area may vary from the stated area and the developer reserves the right to make the revisions/alterations, at its absolute discretion, without any liability whatsoever





# KEY PLAN

LEVEL-11



## 2BHK TYPE 1

A-1123

Internal Living Area 1054.41 sq.ft.

Outdoor Living Area 368.13 sq.ft.

Total Living Area 1401.46 sq.ft.

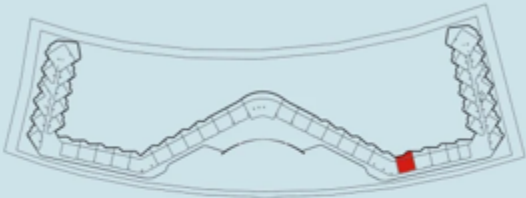
**DISCLAIMER:**

All measurements are indicative and are for marketing purposes only. All efforts have been made to ensure their accuracy, however these layouts are subject to change at the discretion of the developer and should not be relied upon as final. The actual area may vary from the stated area and the developer reserves the right to make the revisions/alterations, at its absolute discretion, without any liability whatsoever



# KEY PLAN

LEVEL-11



## 2BHK TYPE 1

A-1116

Internal Living Area 1027.74 sq.ft.

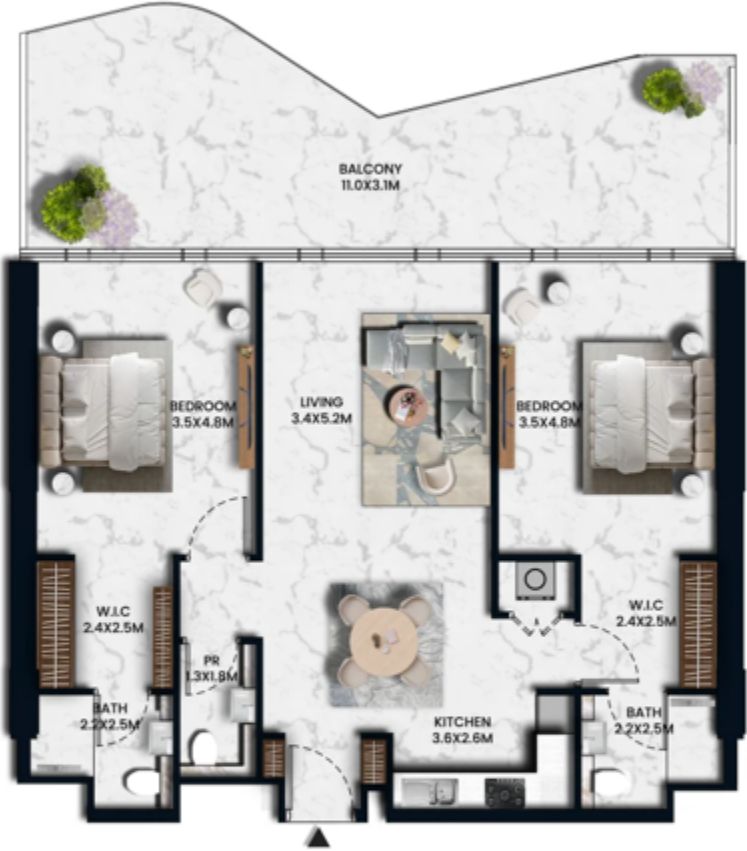
Outdoor Living Area 329.48 sq.ft.

Total Living Area 1357.22 sq.ft.

**DISCLAIMER:**

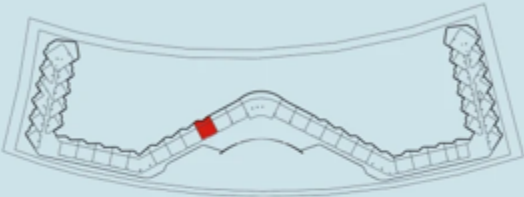
All measurements are indicative and are for marketing purposes only. All efforts have been made to ensure their accuracy, however these layouts are subject to change at the discretion of the developer and should not be relied upon as final. The actual area may vary from the stated area and the developer reserves the right to make the revisions/alterations, at its absolute discretion, without any liability whatsoever





# KEY PLAN

LEVEL-11



## 2BHK TYPE 1

B-1118

Internal Living Area	1021.28 sq.ft.
Outdoor Living Area	368.02 sq.ft.

Total Living Area	1389.30 sq.ft.
-------------------	----------------

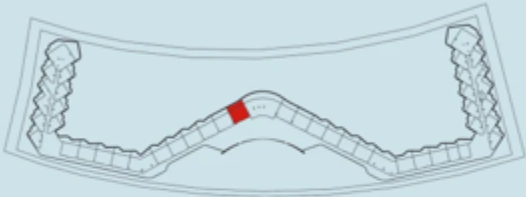
**DISCLAIMER:**

All measurements are indicative and are for marketing purposes only. All efforts have been made to ensure their accuracy, however these layouts are subject to change at the discretion of the developer and should not be relied upon as final. The actual area may vary from the stated area and the developer reserves the right to make the revisions/alterations, at its absolute discretion, without any liability whatsoever



# KEY PLAN

LEVEL-11



## 2BHK TYPE 1

B-1120

Internal Living Area 1041.73 sq.ft.

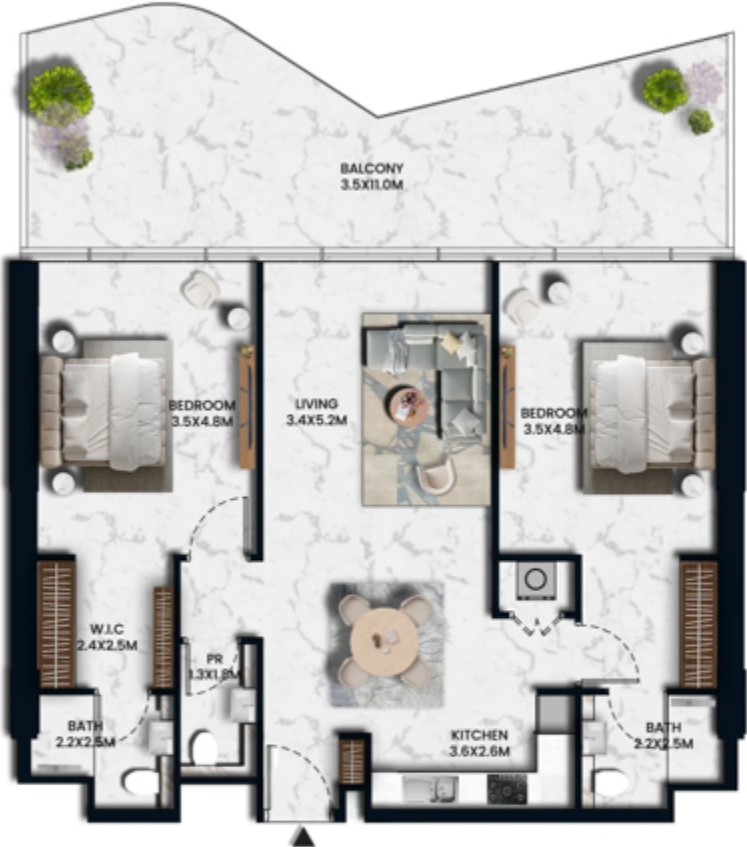
Outdoor Living Area 370.60 sq.ft.

Total Living Area 1412.33 sq.ft.

**DISCLAIMER:**

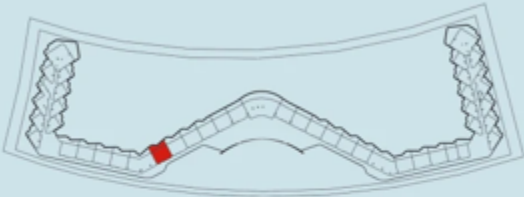
All measurements are indicative and are for marketing purposes only. All efforts have been made to ensure their accuracy, however these layouts are subject to change at the discretion of the developer and should not be relied upon as final. The actual area may vary from the stated area and the developer reserves the right to make the revisions/alterations, at its absolute discretion, without any liability whatsoever





KEY PLAN

LEVEL-11



2BHK TYPE 1

B-1115

Internal Living Area	1023.11	sq.ft.
Outdoor Living Area	371.68	sq.ft.
Total Living Area	1394.79	sq.ft.

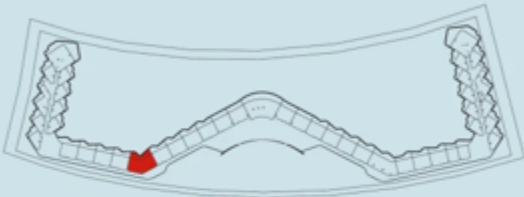
**DISCLAIMER:**  
All measurements are indicative and are for marketing purposes only. All efforts have been made to ensure their accuracy, however these layouts are subject to change at the discretion of the developer and should not be relied upon as final. The actual area may vary from the stated area and the developer reserves the right to make the revisions/alterations, at its absolute discretion, without any liability whatsoever

SORA Beach Residences - B-1114



KEY PLAN

LEVEL-11



3BHK TYPE 1

B-1114

Internal Living Area 1678.42 sq.ft.

Outdoor Living Area 440.89 sq.ft.

Total Living Area 2119.31 sq.ft.

DISCLAIMER:

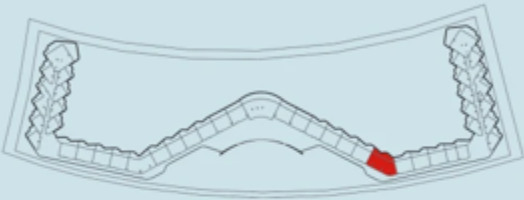
All measurements are indicative and are for marketing purposes only. All efforts have been made to ensure their accuracy, however these layouts are subject to change at the discretion of the developer and should not be relied upon as final. The actual area may vary from the stated area and the developer reserves the right to make the revisions/alterations, at its absolute discretion, without any liability whatsoever





KEY PLAN

LEVEL-11



3BHK TYPE 2

A-1117

Internal Living Area 1775.72 sq.ft.

Outdoor Living Area 492.23 sq.ft.

Total Living Area 2267.96 sq.ft.

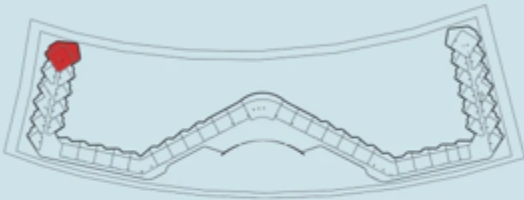
DISCLAIMER:

All measurements are indicative and are for marketing purposes only. All efforts have been made to ensure their accuracy, however these layouts are subject to change at the discretion of the developer and should not be relied upon as final. The actual area may vary from the stated area and the developer reserves the right to make the revisions/alterations, at its absolute discretion, without any liability whatsoever



KEY PLAN

LEVEL-11



4BHK TYPE 2

B-1105

Internal Living Area 1885.30 sq.ft.

Outdoor Living Area 1234.51 sq.ft.

Total Living Area 3119.81 sq.ft.

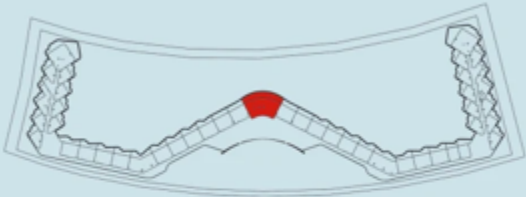
DISCLAIMER:

All measurements are indicative and are for marketing purposes only. All efforts have been made to ensure their accuracy, however these layouts are subject to change at the discretion of the developer and should not be relied upon as final. The actual area may vary from the stated area and the developer reserves the right to make the revisions/alterations, at its absolute discretion, without any liability whatsoever



KEY PLAN

LEVEL-11



4BHK TYPE 1

A-1124

Internal Living Area 2402.83 sq.ft.

Outdoor Living Area 1106.31 sq.ft.

Total Living Area 3509.14 sq.ft.

DISCLAIMER:

All measurements are indicative and are for marketing purposes only. All efforts have been made to ensure their accuracy, however these layouts are subject to change at the discretion of the developer and should not be relied upon as final. The actual area may vary from the stated area and the developer reserves the right to make the revisions/alterations, at its absolute discretion, without any liability whatsoever