






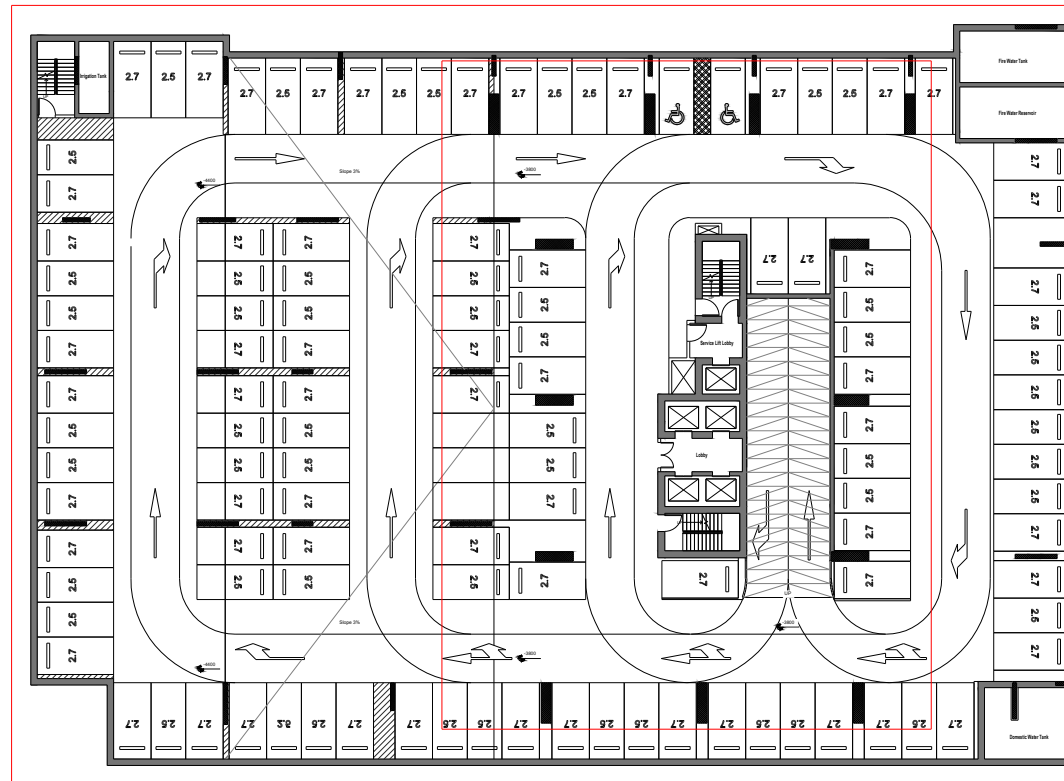
**Reportage**  *Tower*

AL MARYAH ISLAND

# Floor Plan

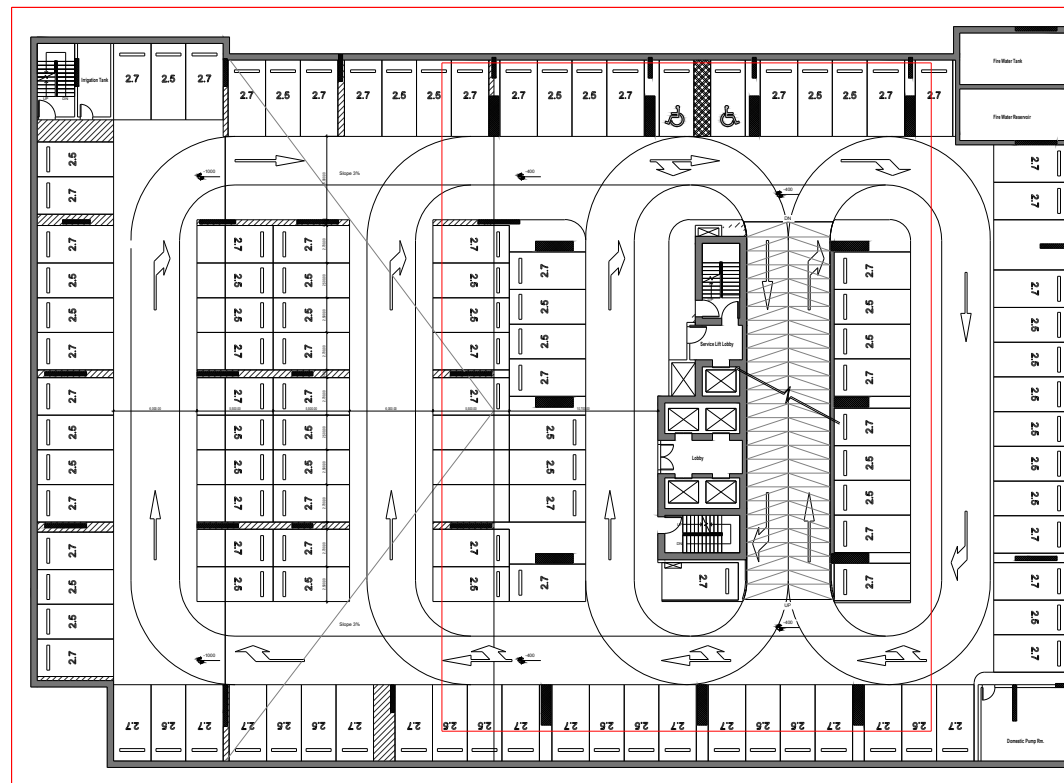
## BASEMENT 02

 J1B
  1B
  2B
  3B
  4B



## BASEMENT 01

 J1B  
  1B  
  2B  
  3B  
  4B

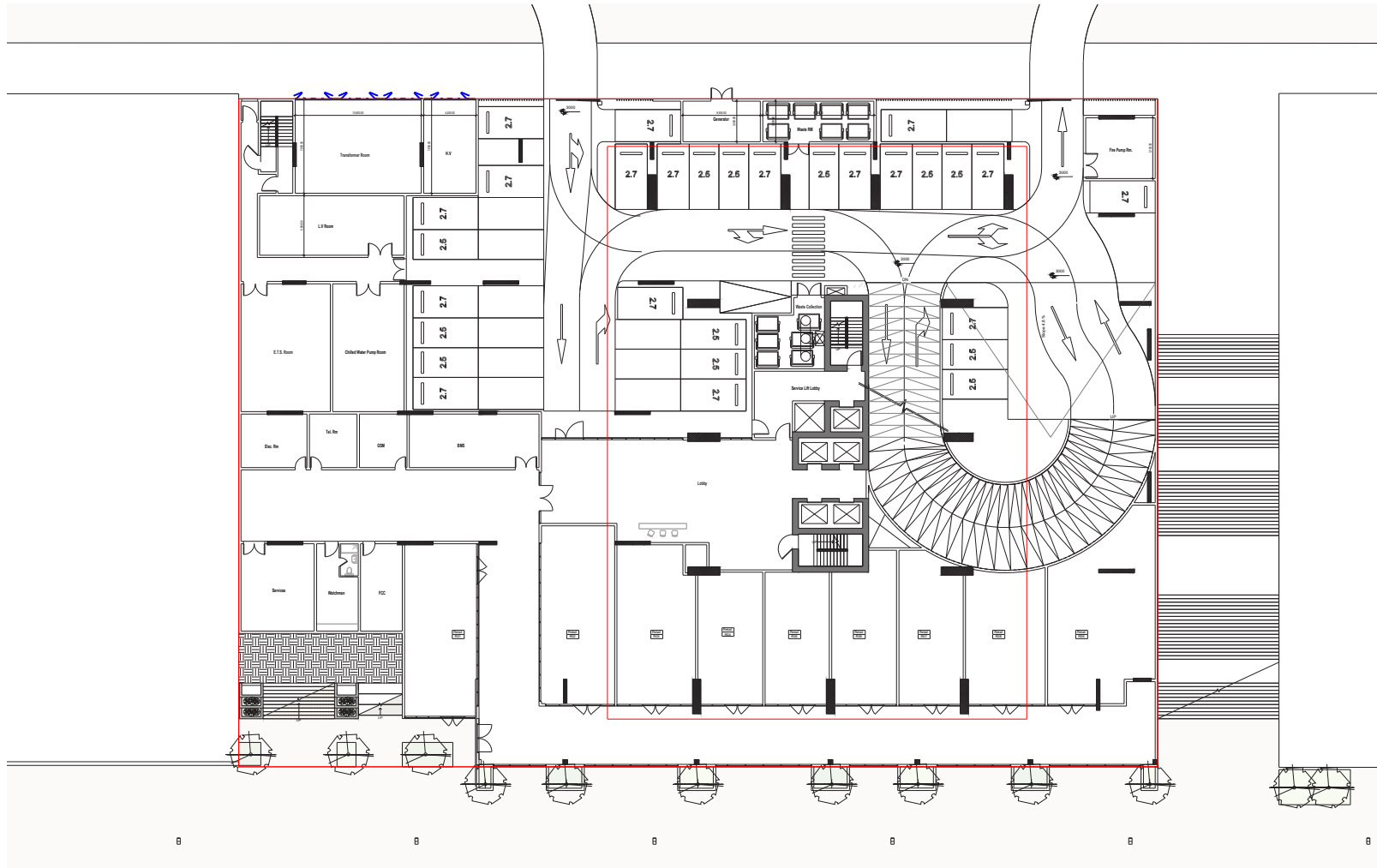




# REPORTAGE TOWER

## LOWER GROUND FLOOR

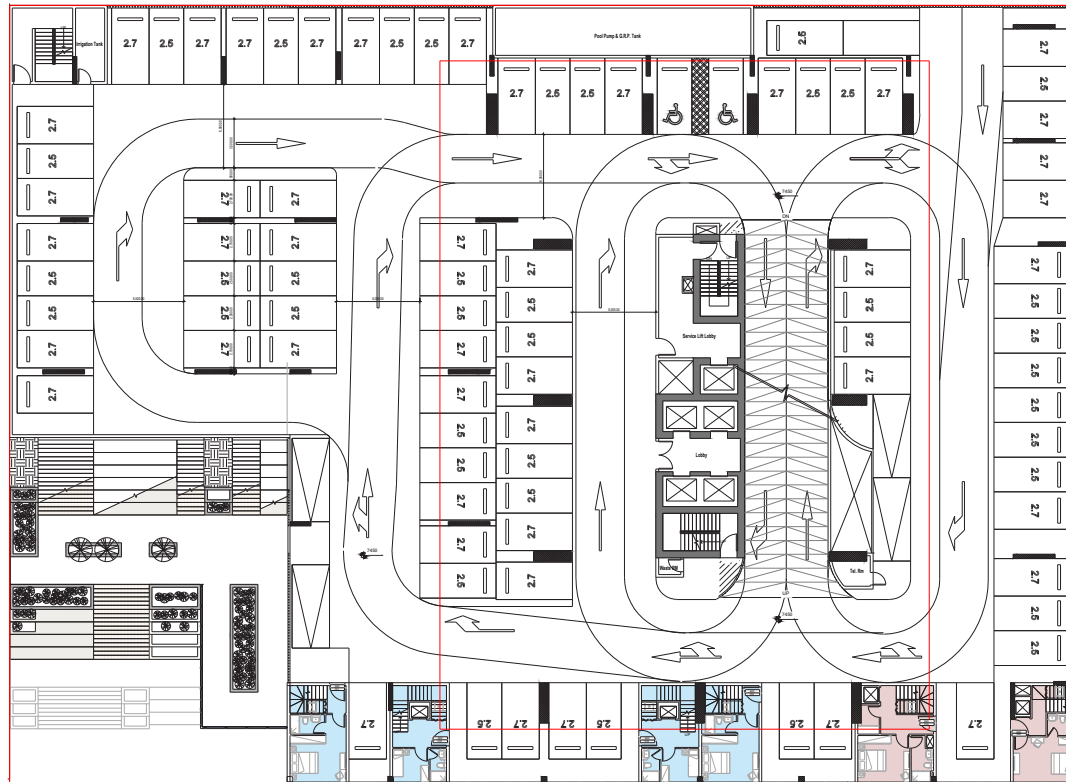
● J1B ● 1B ● 2B ● 3B ● 4B



# REPORTAGE TOWER

## LOWER PODIUM 01

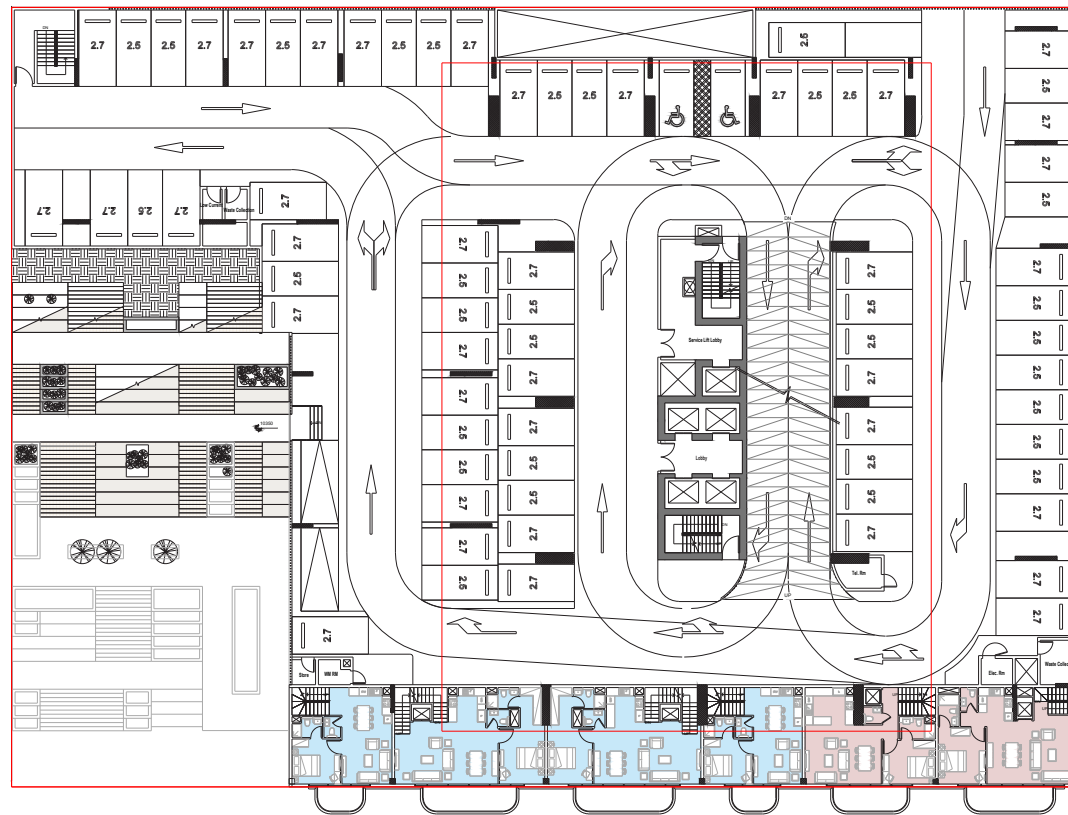
● J1B ● 1B ● 2B ● 3B ● 4B



# REPORTAGE TOWER

## LOWER PODIUM 02

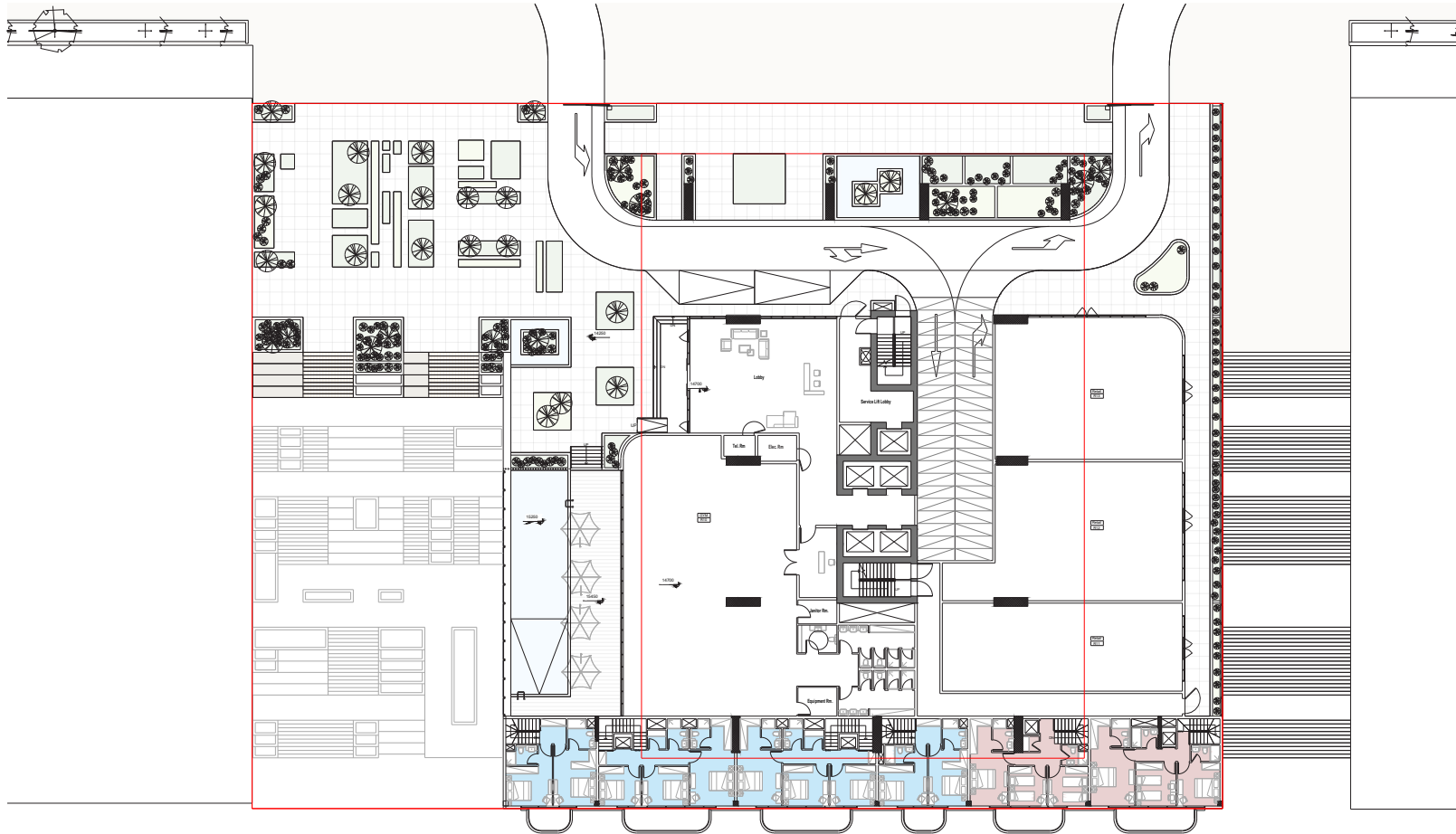
● J1B ● 1B ● 2B ● 3B ● 4B



# REPORTAGE TOWER

## UPPER PODIUM (UG)

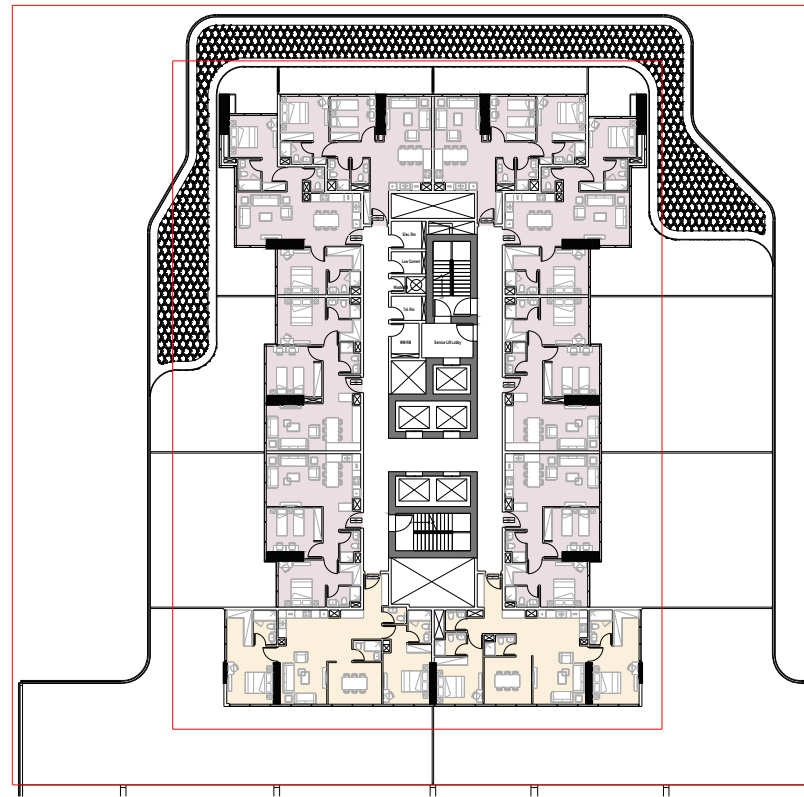
● J1B ● 1B ● 2B ● 3B ● 4B



# REPORTAGE TOWER

## 1<sup>ST</sup> FLOOR

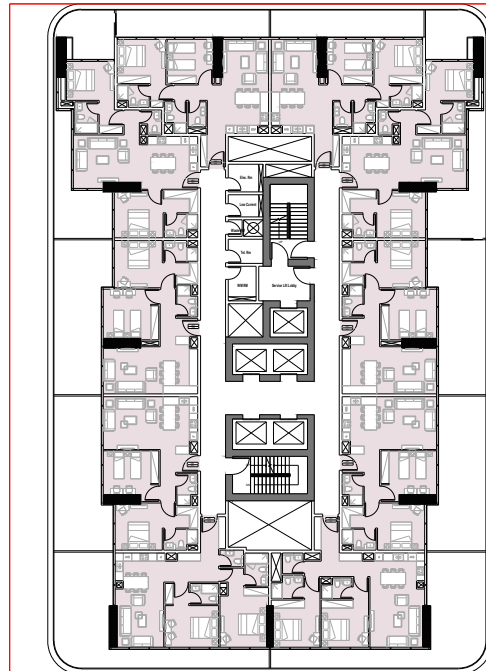
● J1B ● 1B ● 2B ● 3B ● 4B



# REPORTAGE TOWER

## TYPICAL 2<sup>ND</sup> TO 6<sup>TH</sup>

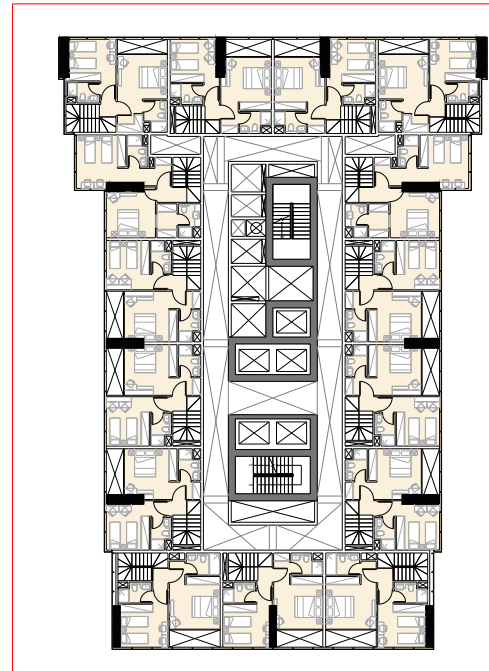
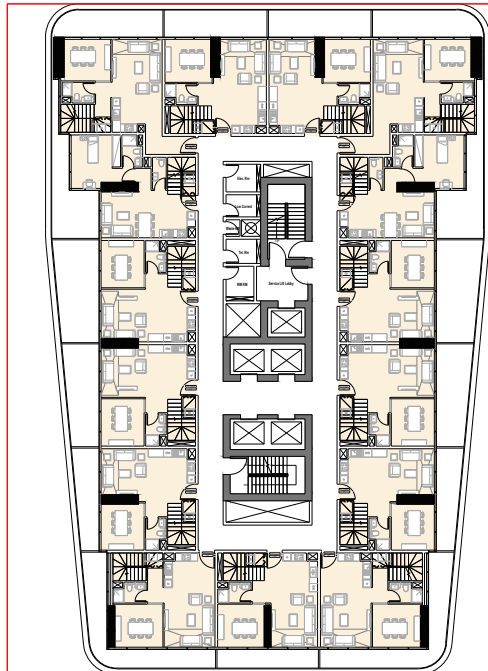
● J1B ● 1B ● 2B ● 3B ● 4B



# REPORTAGE TOWER

TYPICAL 7<sup>TH</sup> TO 33<sup>RD</sup> (EXCEPT 19<sup>TH</sup>)

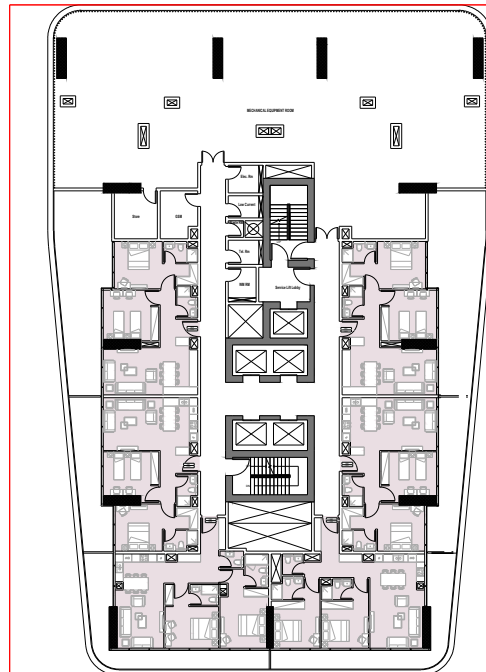
● J1B ● 1B ● 2B ● 3B ● 4B



# REPORTAGE TOWER

## 19<sup>TH</sup> FLOOR

● J1B ● 1B ● 2B ● 3B ● 4B

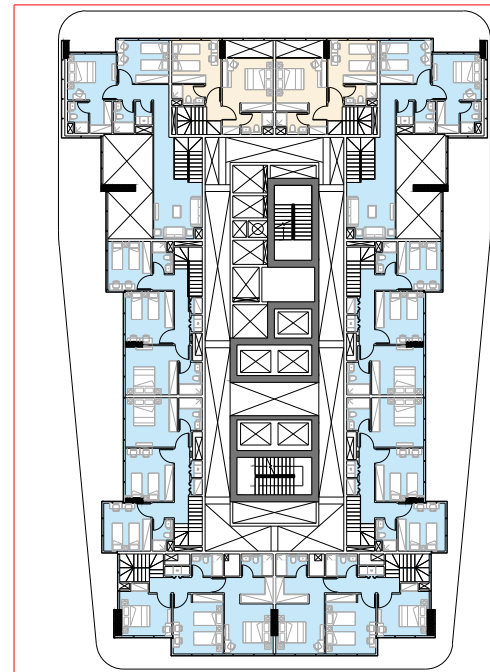
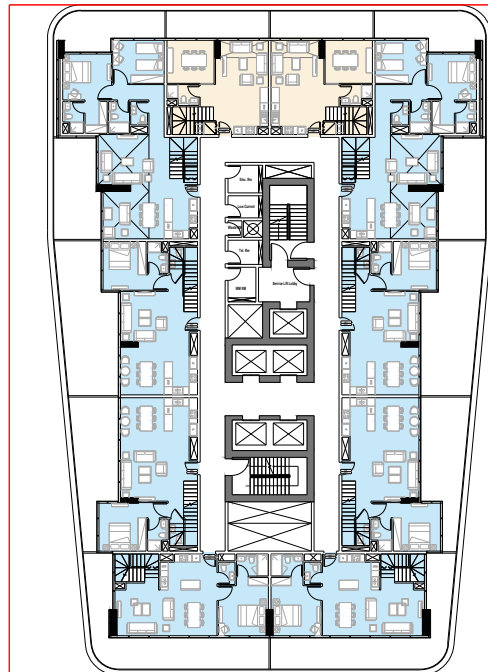




# REPORTAGE TOWER

## 34<sup>TH</sup> & 35<sup>TH</sup> FLOOR

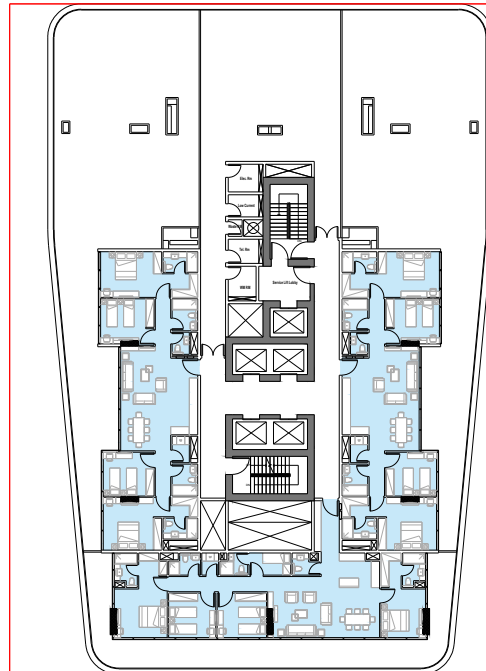
● J1B ● 1B ● 2B ● 3B ● 4B



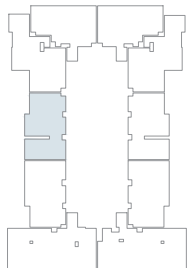
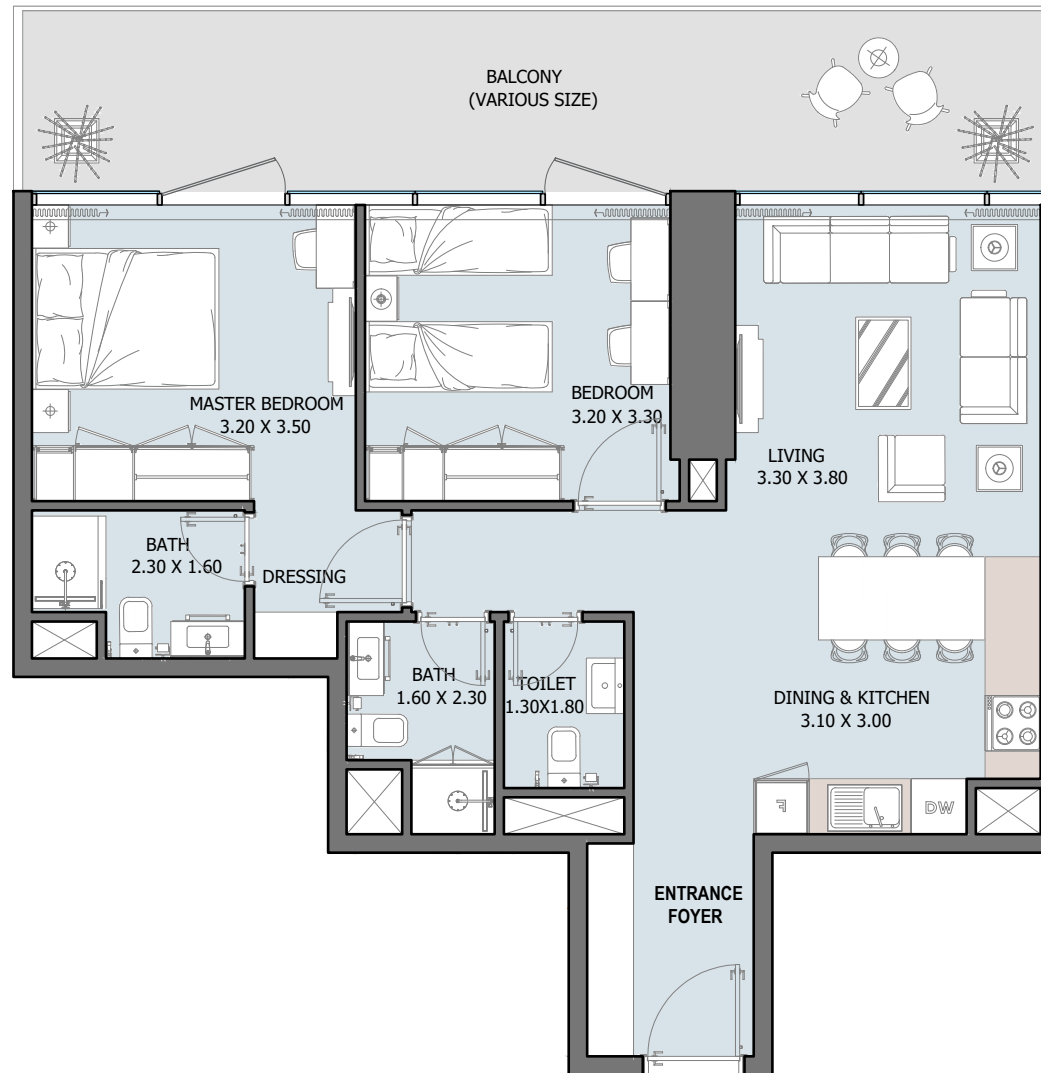
# REPORTAGE TOWER

## 36<sup>TH</sup> FLOOR

● J1B   ● 1B   ● 2B   ● 3B   ● 4B



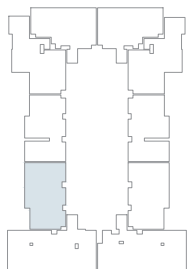
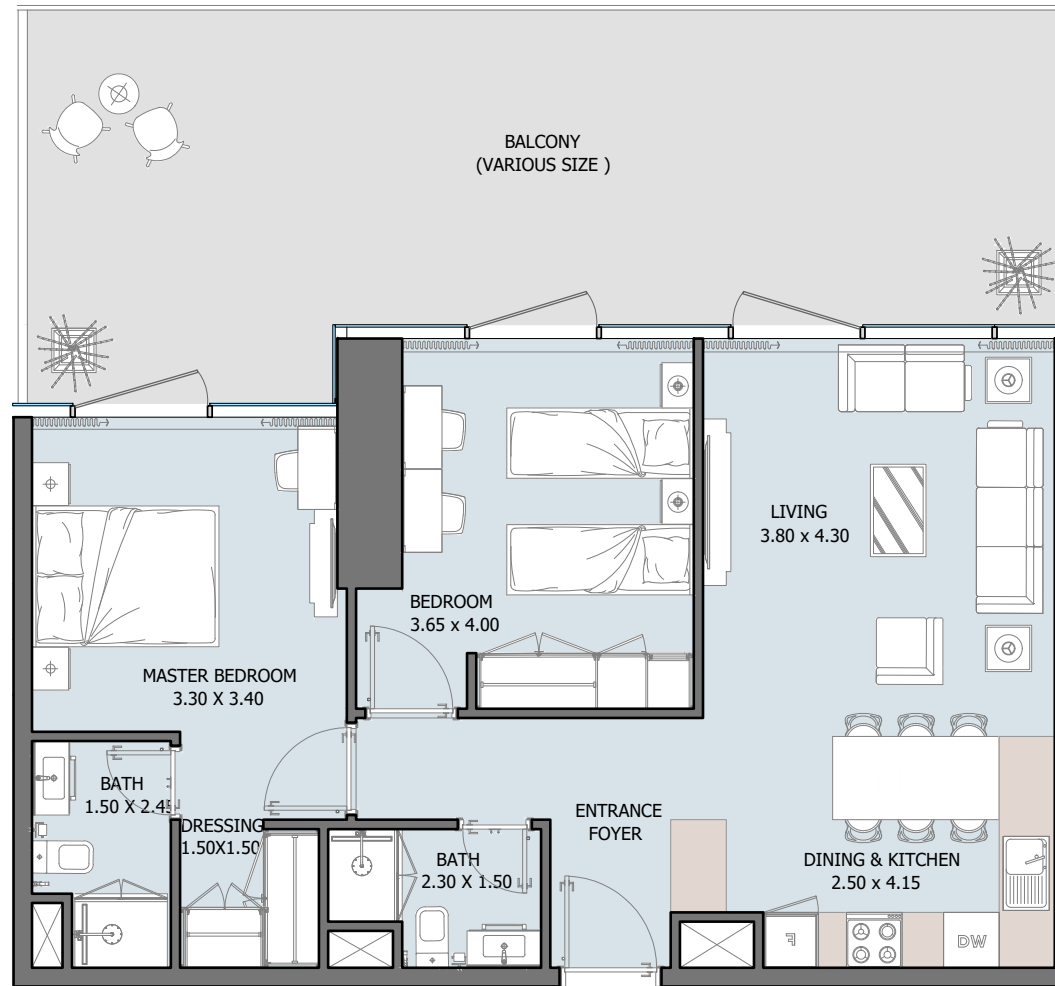
# Unit Types



## 2B | Type A

From 1<sup>st</sup> to 6<sup>th</sup> Floor

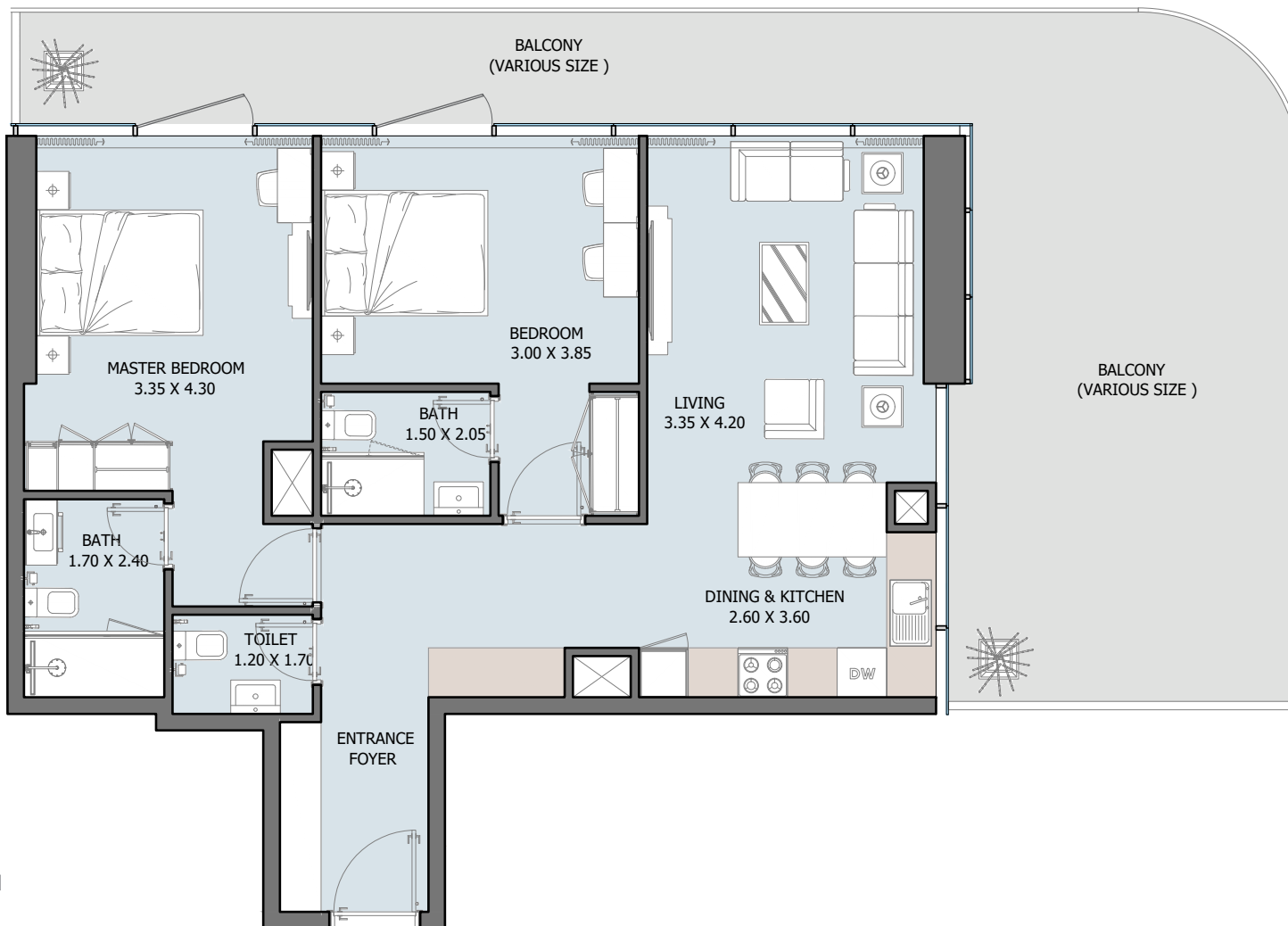
Internal Area	800.40 sq.ft
Outdoor Area	240.03 sq.ft
Total Area	1040.44 sq.ft



## 2B | Type B

From 1<sup>st</sup> to 6<sup>th</sup> Floor

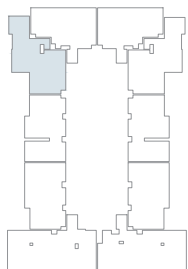
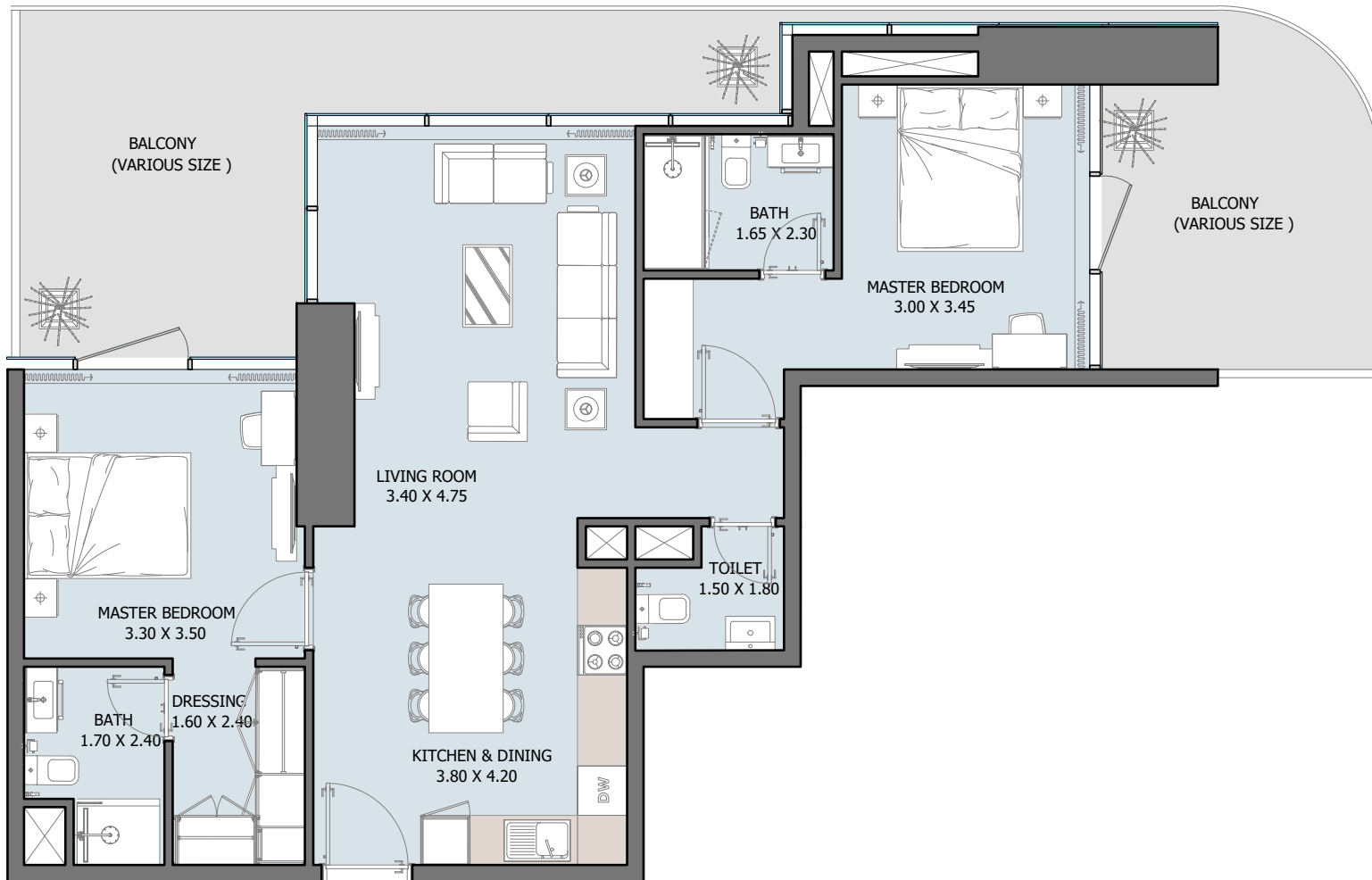
Internal Area	801.70 to 807.62 sq.ft
Outdoor Area	256.29 to 1525.24 sq.ft
Total Area	1063.90 to 2326.94 sq.ft



## 2B | Type C

From 2<sup>nd</sup> to 6<sup>th</sup> Floor

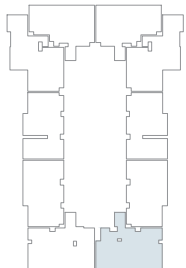
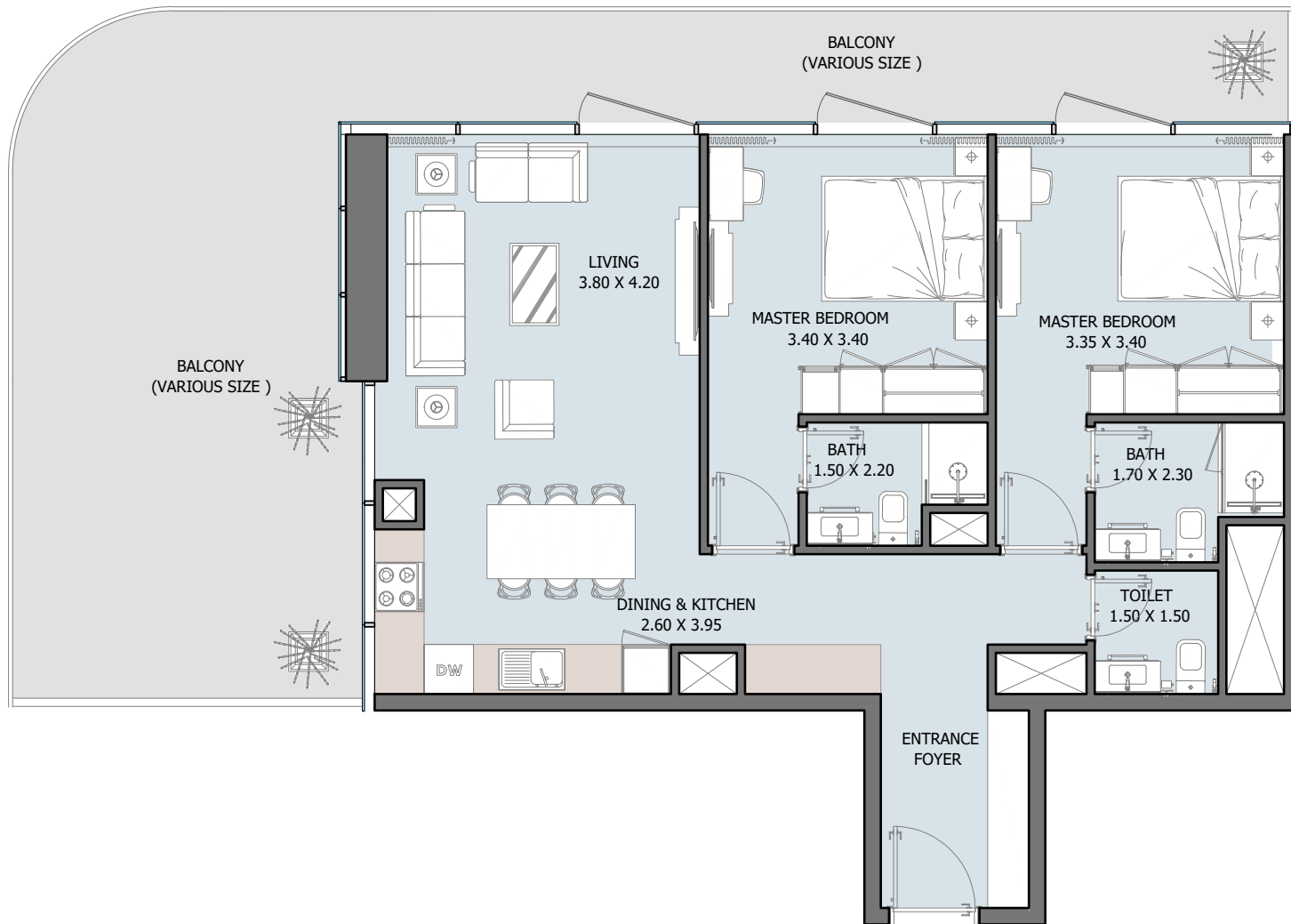
Internal Area	901.05 sq.ft
Outdoor Area	326.04 to 552.19 sq.ft
Total Area	1227.08 to 1453.23 sq.ft



## 2B | Type D

From 1<sup>st</sup> to 6<sup>th</sup> Floor

Internal Area	907.40 sq.ft
Outdoor Area	383.52 to 776.29 sq.ft
Total Area	1290.91 to 1683.69 sq.ft

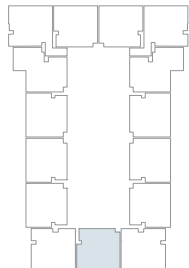
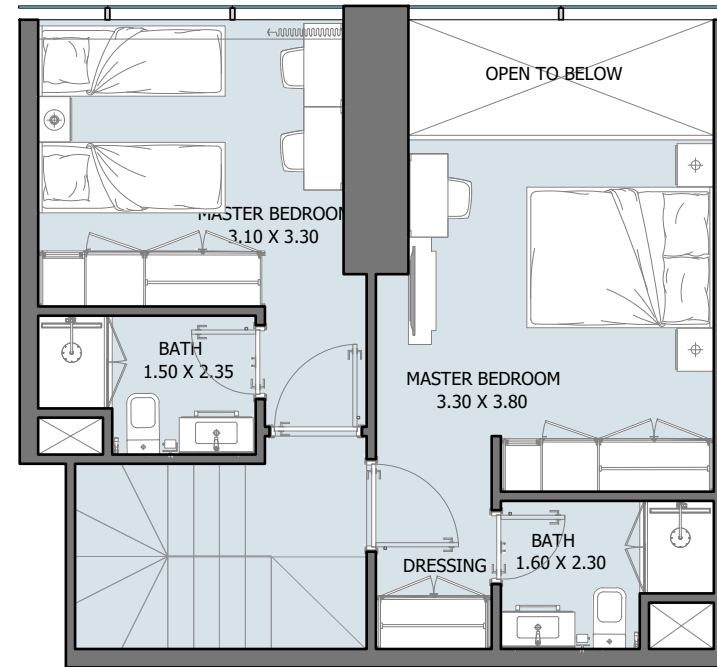
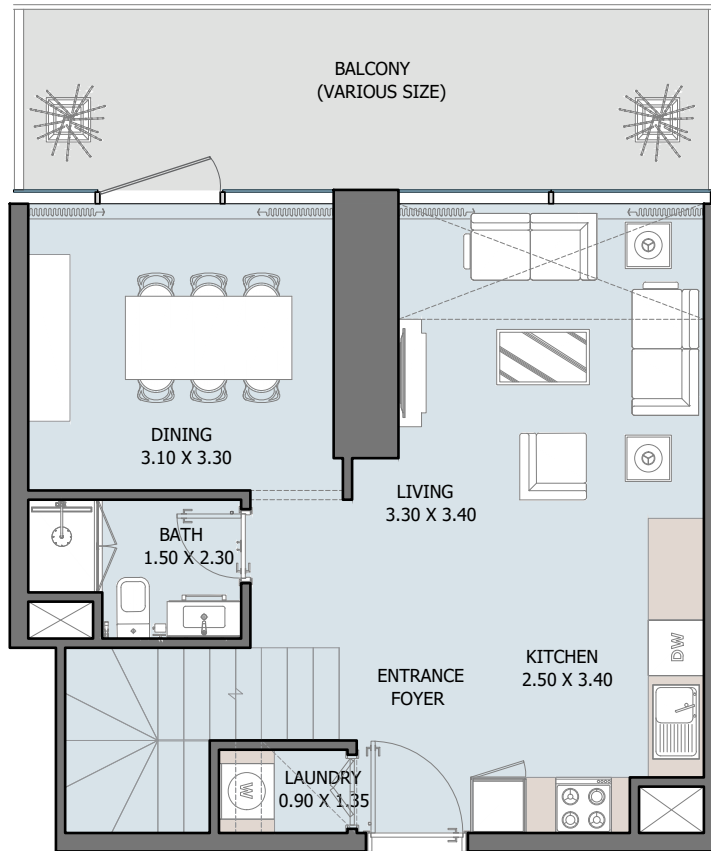


## 2B | Type E

From 2<sup>nd</sup> to 6<sup>th</sup> Floor

Internal Area	871.23 sq.ft
Outdoor Area	326.04 to 552.19 sq.ft
Total Area	1197.27 to 1423.42 sq.ft

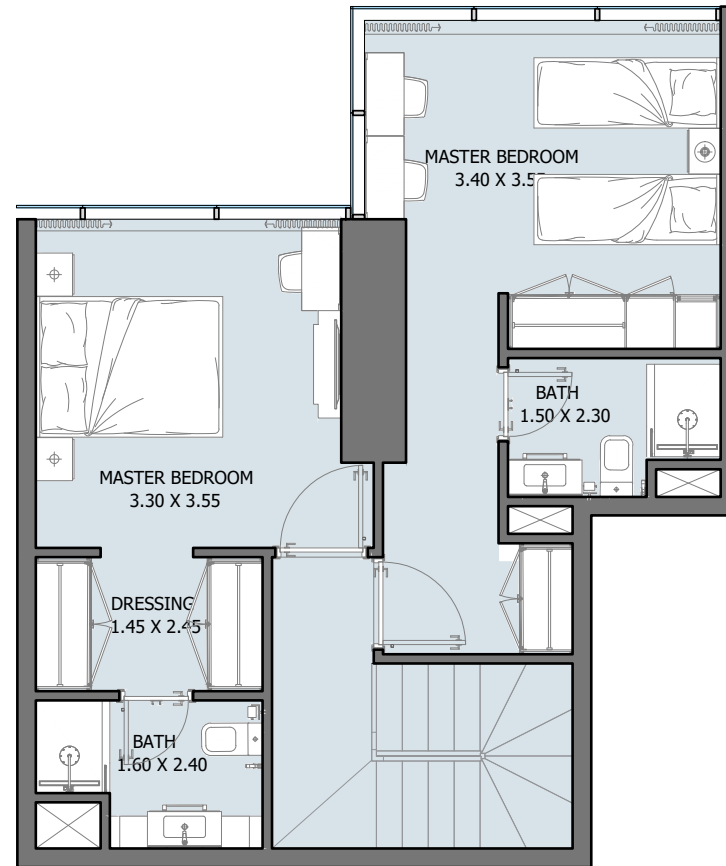
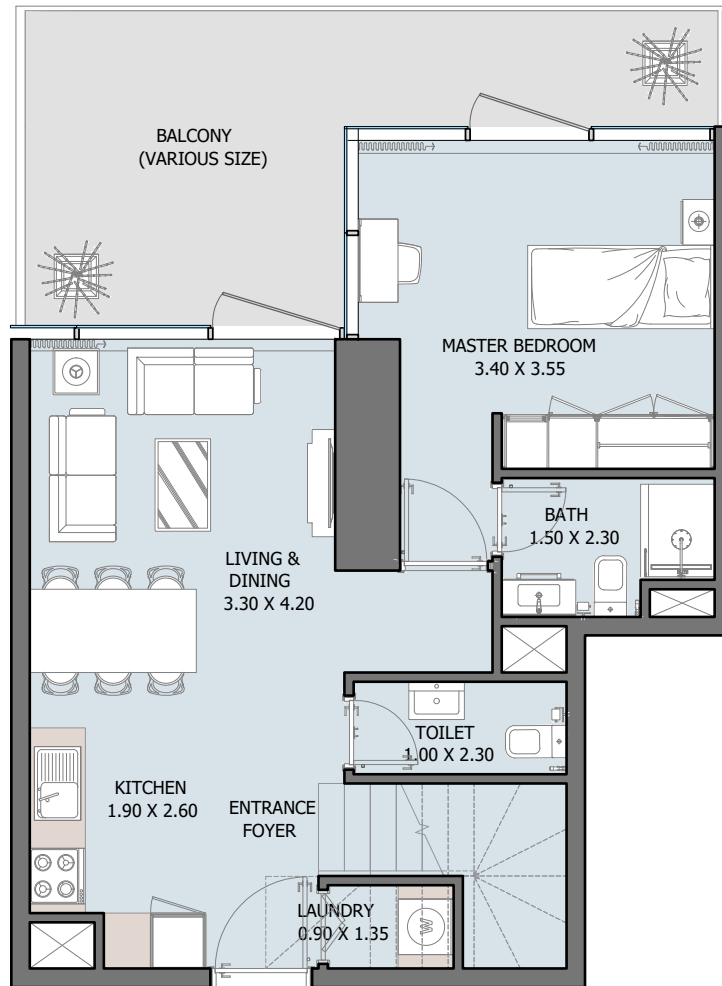




## 2B Convertible Duplex | Type A

From 7<sup>th</sup> to 34<sup>th</sup> Floor

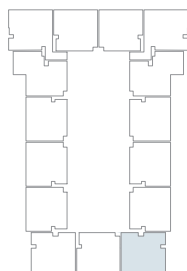
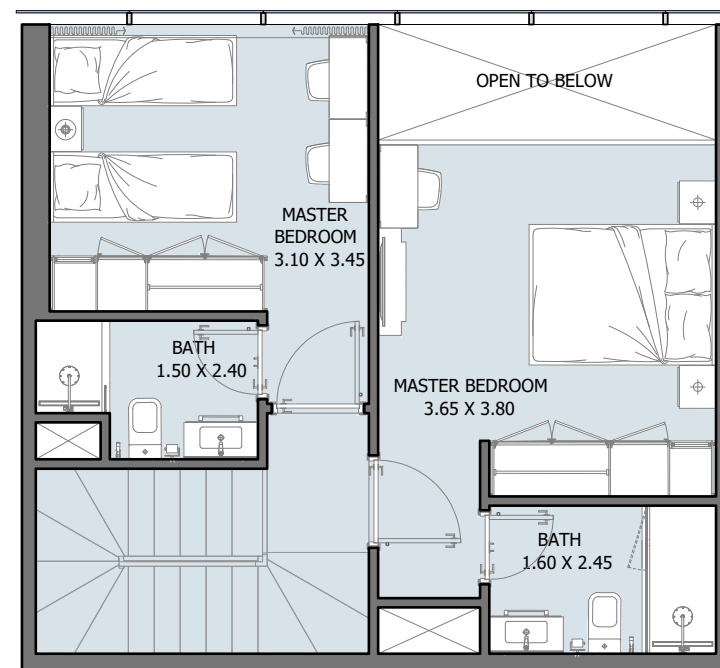
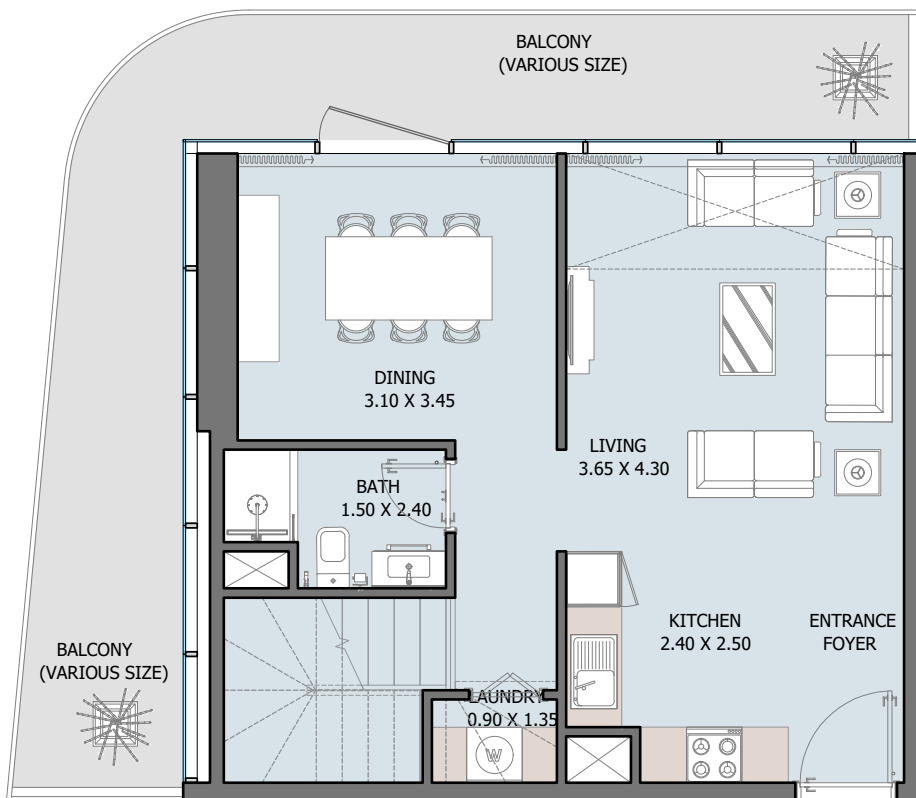
Internal Area	1029.24 to 1046.04 sq.ft
Outdoor Area	111.51 to 249.40 sq.ft
Total Area	1140.76 to 1289.30 sq.ft



## 2B Convertible Duplex | Type B

From 7<sup>th</sup> to 32<sup>th</sup> Floor

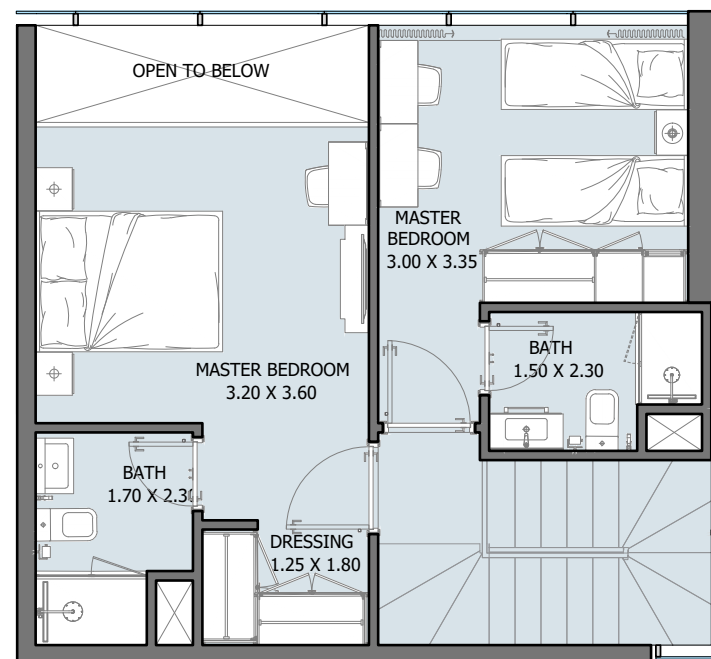
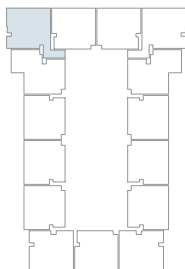
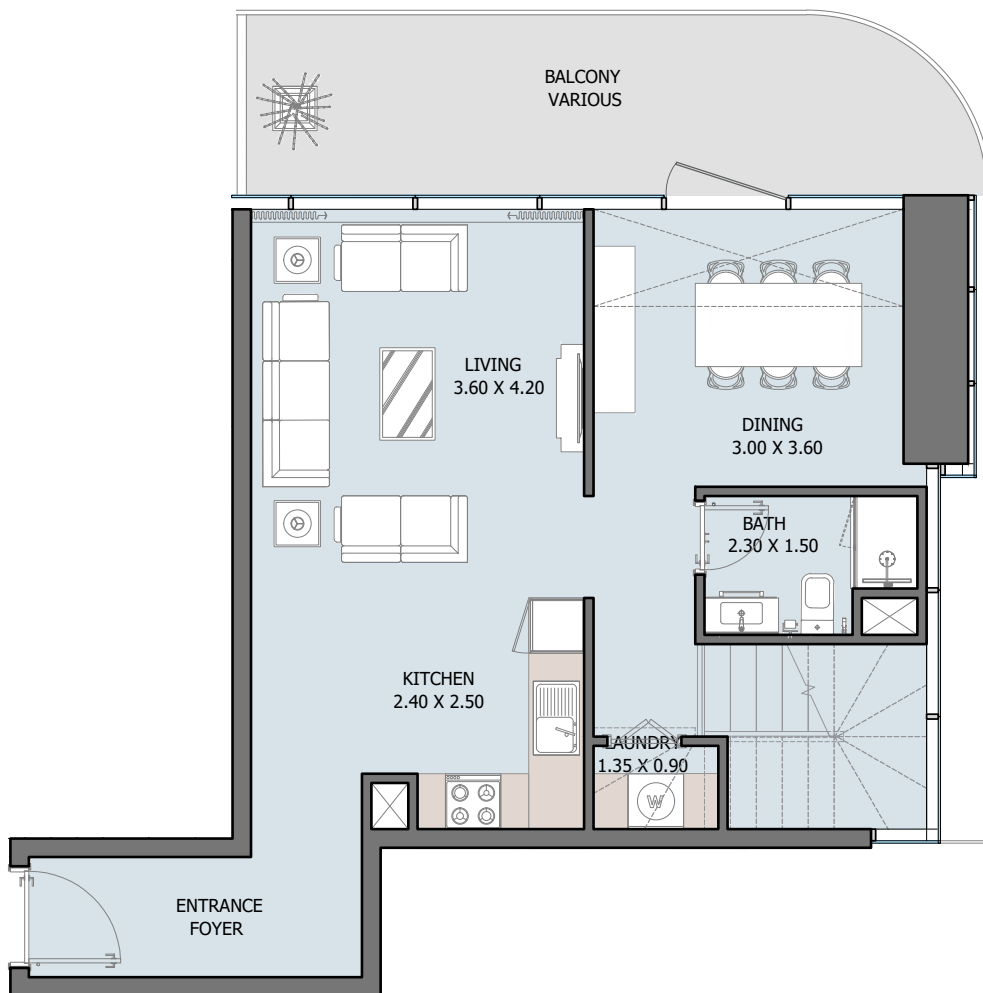
Internal Area	1178.65 sq.ft
Outdoor Area	188.26 sq.ft
Total Area	1366.91 sq.ft



## 2B Convertible Duplex | Type C

From 7<sup>th</sup> to 32<sup>th</sup> Floor

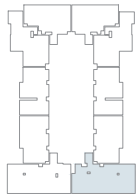
Internal Area	1073.27 sq.ft
Outdoor Area	269.85 sq.ft
Total Area	1343.12 sq.ft



## 2B Convertible Duplex | Type D

From 7<sup>th</sup> to 32<sup>th</sup> Floor

Internal Area	1128.49 sq.ft
Outdoor Area	165.12 sq.ft
Total Area	1293.61 sq.ft

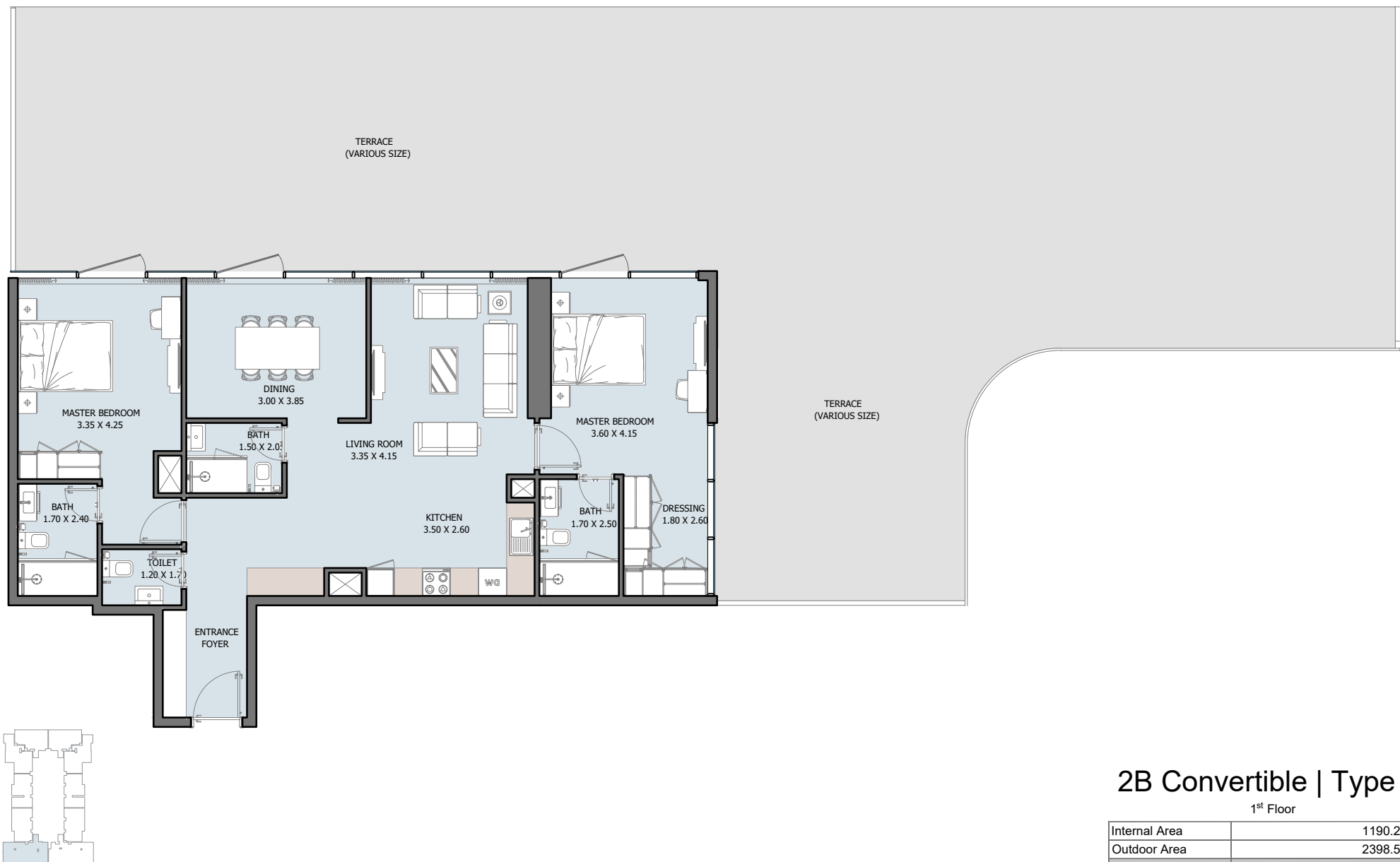


## 2B Convertible | Type E

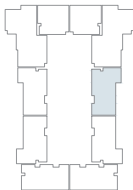
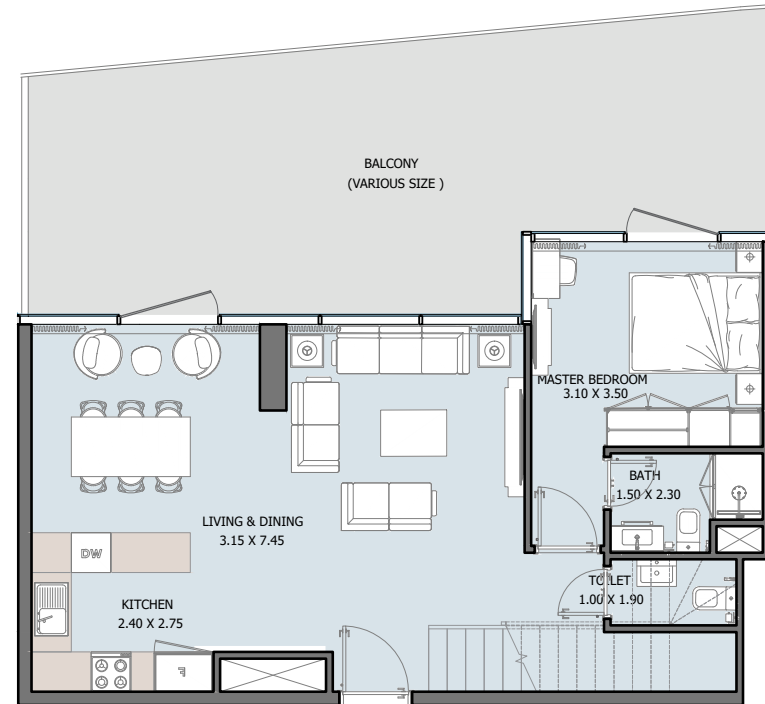
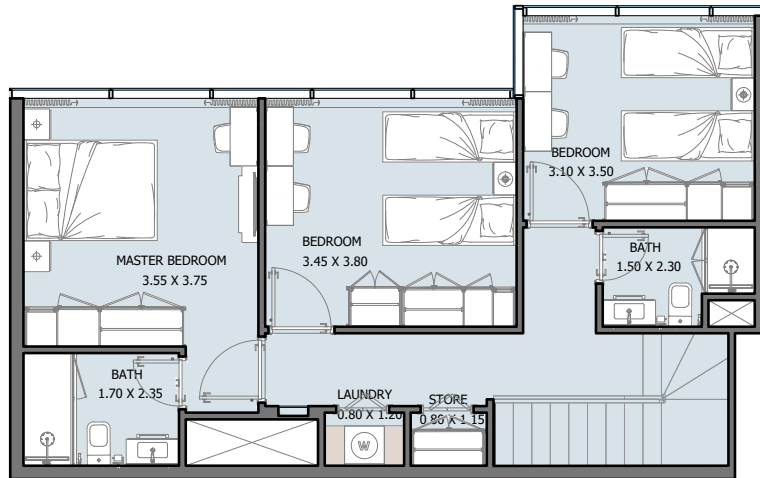
1<sup>st</sup> Floor

Internal Area	1160.46 sq.ft
Outdoor Area	2458.80 sq.ft
Total Area	3619.25 sq.ft

All drawings and dimensions are approximate. Drawings are not to scale and are subject to change without notice. The developer reserves the right to make revisions. The units are measured at typical floors in the building and columns may vary in size depending on the floor level. The furnishing and accessories shown are for representation only. The availability, length and width of the balcony varies depending on which floor and which orientation the unit is located within the building. There will be slight differences in the internal areas between the same unit types depending on the shaft sizes that go through the units.



All drawings and dimensions are approximate. Drawings are not to scale and are subject to change without notice. The developer reserves the right to make revisions. The units are measured at typical floors in the building and columns may vary in size depending on the floor level. The furnishing and accessories shown are for representation only. The availability, length and width of the balcony varies depending on which floor and which orientation the unit is located within the building. There will be slight differences in the internal areas between the same unit types depending on the shaft sizes that go through the units.

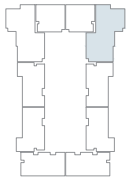
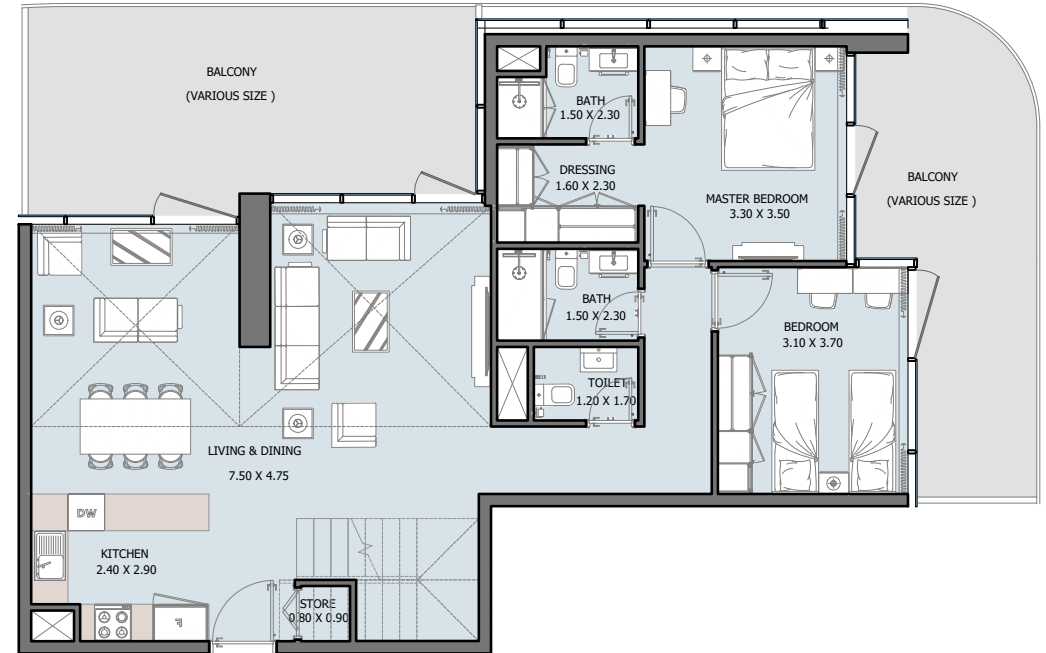
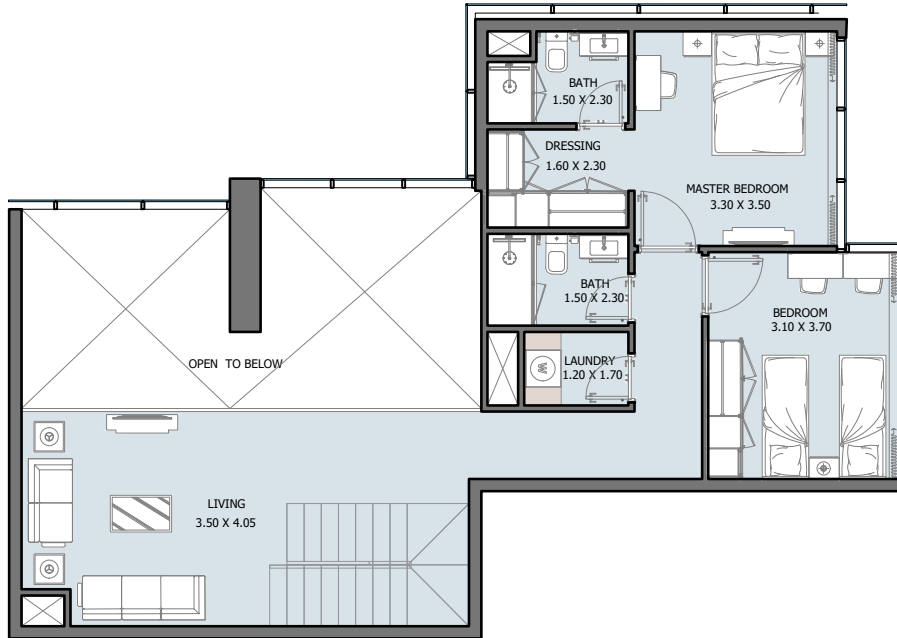


## 4B Penthouse | Type A

34<sup>th</sup> Floor

Internal Area	1444.52 to 1468.30 sq.ft
Outdoor Area	315.27 to 453.81 sq.ft
Total Area	1783.58 to 1898.32 sq.ft

All drawings and dimensions are approximate. Drawings are not to scale and are subject to change without notice. The developer reserves the right to make revisions. The units are measured at typical floors in the building and columns may vary in size depending on the floor level. The furnishing and accessories shown are for representation only. The availability, length and width of the balcony varies depending on which floor and which orientation the unit is located within the building. There will be slight differences in the internal areas between the same unit types depending on the shaft sizes that go through the units.



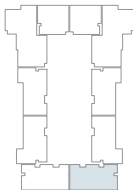
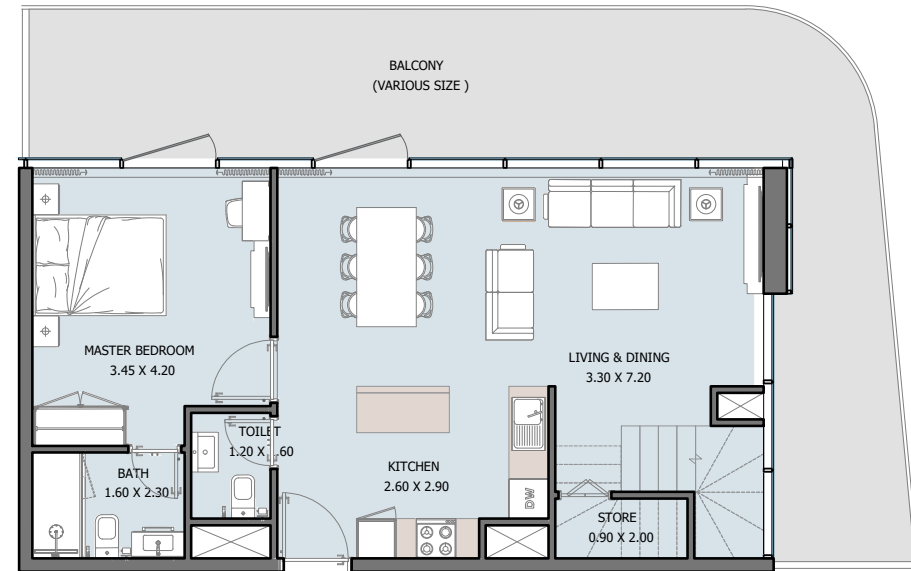
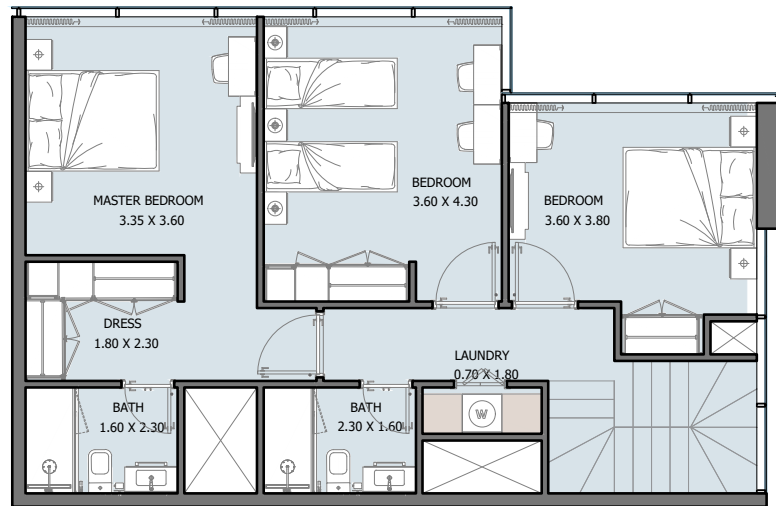
## 4B Penthouse | Type B

34<sup>th</sup> Floor

Internal Area	1940.84 sq.ft
Outdoor Area	468.66 sq.ft
Total Area	2409.50 sq.ft

All drawings and dimensions are approximate. Drawings are not to scale and are subject to change without notice. The developer reserves the right to make revisions. The units are measured at typical floors in the building and columns may vary in size depending on the floor level. The furnishing and accessories shown are for representation only. The availability, length and width of the balcony varies depending on which floor and which orientation the unit is located within the building. There will be slight differences in the internal areas between the same unit types depending on the shaft sizes that go through the units.



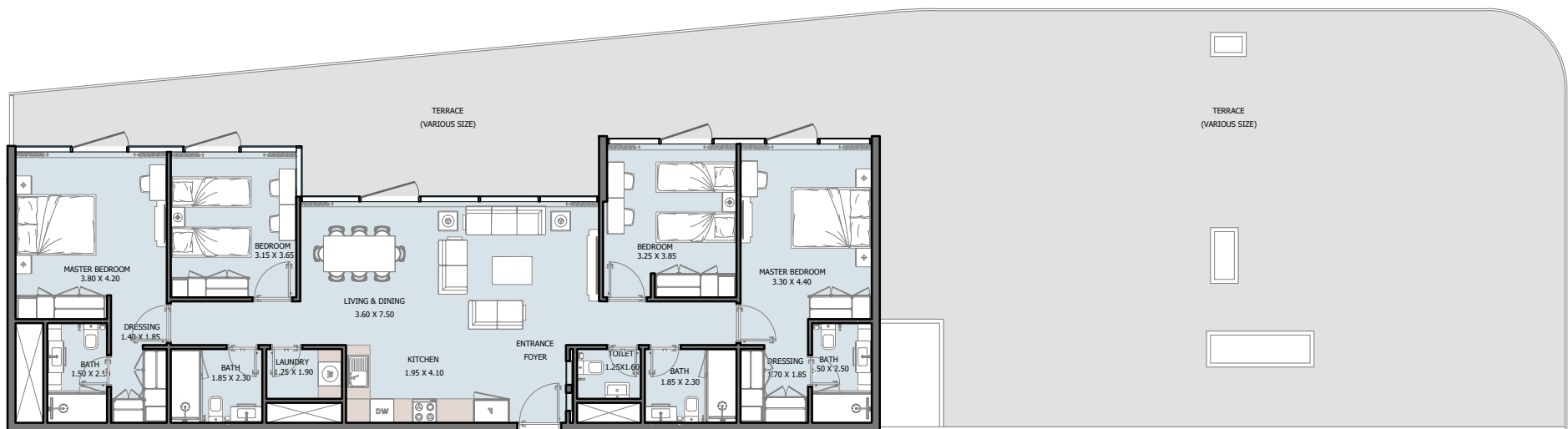


## 4B Penthouse | Type C

34<sup>th</sup> Floor

Internal Area	1531.16 sq.ft
Outdoor Area	434.97 sq.ft
Total Area	1966.13 sq.ft

All drawings and dimensions are approximate. Drawings are not to scale and are subject to change without notice. The developer reserves the right to make revisions. The units are measured at typical floors in the building and columns may vary in size depending on the floor level. The furnishing and accessories shown are for representation only. The availability, length and width of the balcony varies depending on which floor and which orientation the unit is located within the building. There will be slight differences in the internal areas between the same unit types depending on the shaft sizes that go through the units.

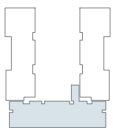
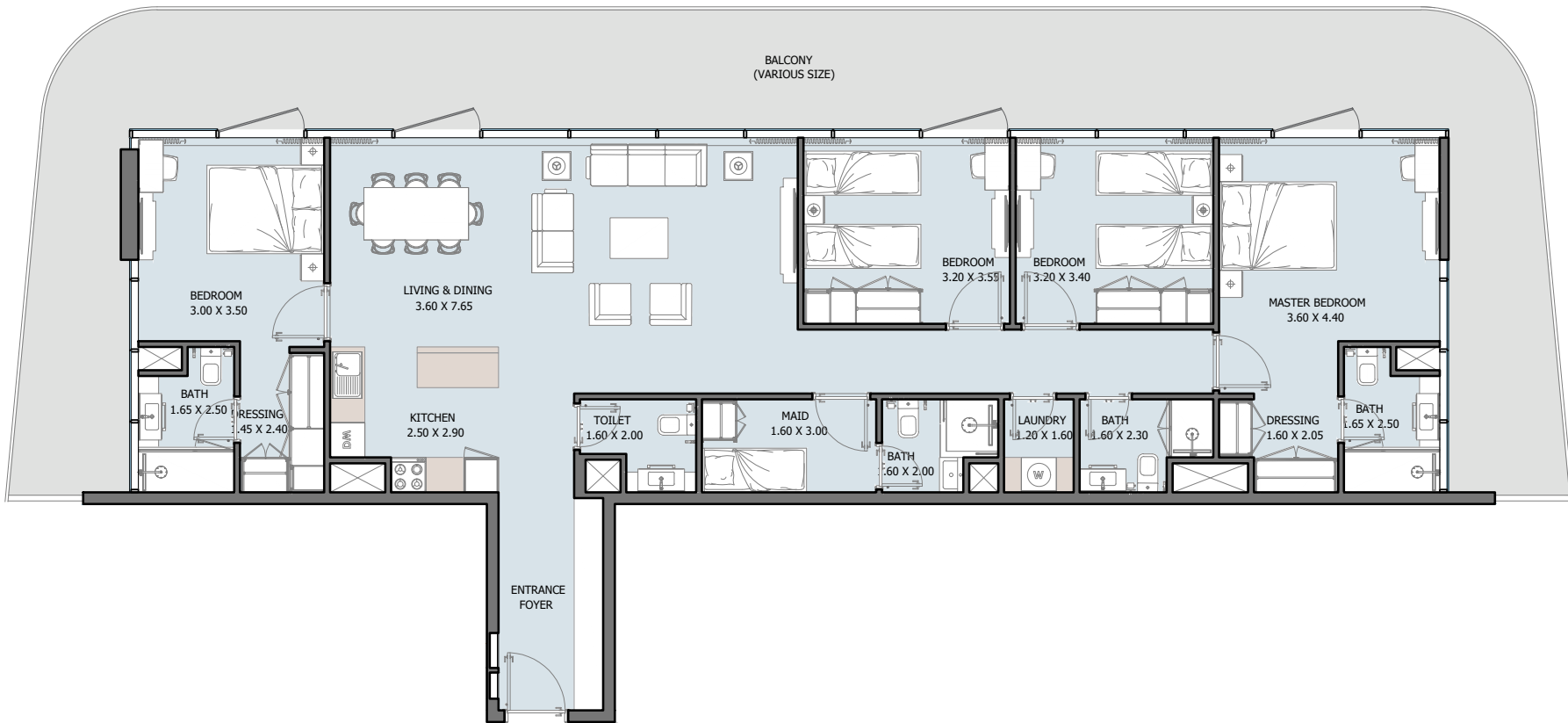


## 4B Penthouse | Type D

36<sup>th</sup> Floor

Internal Area	1528.47 sq.ft
Outdoor Area	2503.58 sq.ft
Total Area	4032.05 sq.ft

All drawings and dimensions are approximate. Drawings are not to scale and are subject to change without notice. The developer reserves the right to make revisions. The units are measured at typical floors in the building and columns may vary in size depending on the floor level. The furnishing and accessories shown are for representation only. The availability, length and width of the balcony varies depending on which floor and which orientation the unit is located within the building. There will be slight differences in the internal areas between the same unit types depending on the shaft sizes that go through the units.

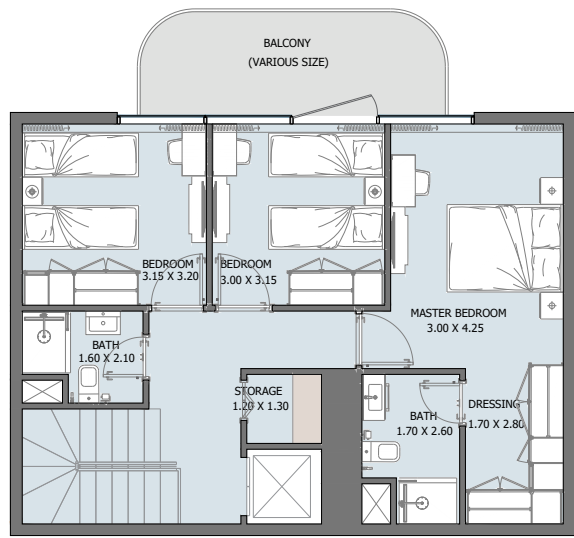
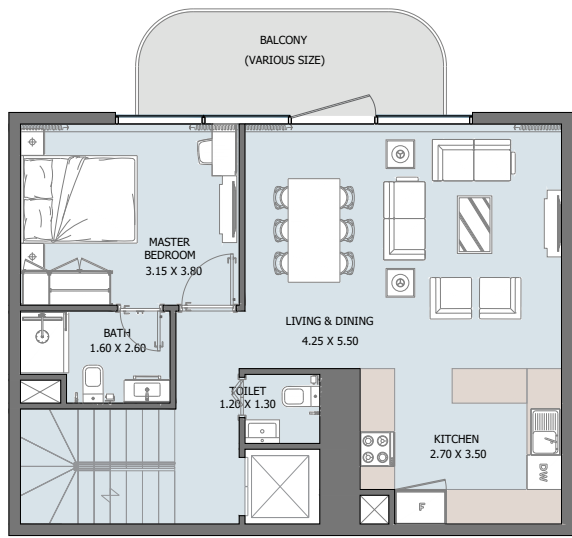
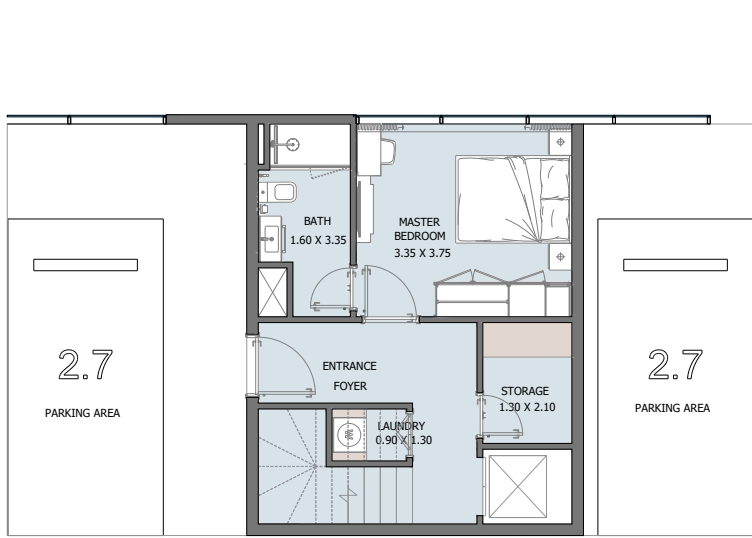


## 4B Penthouse | Type E

36<sup>th</sup> Floor

Internal Area	1588.64 sq.ft
Outdoor Area	821.50 sq.ft
Total Area	2410.14 sq.ft

All drawings and dimensions are approximate. Drawings are not to scale and are subject to change without notice. The developer reserves the right to make revisions. The units are measured at typical floors in the building and columns may vary in size depending on the floor level. The furnishing and accessories shown are for representation only. The availability, length and width of the balcony varies depending on which floor and which orientation the unit is located within the building. There will be slight differences in the internal areas between the same unit types depending on the shaft sizes that go through the units.

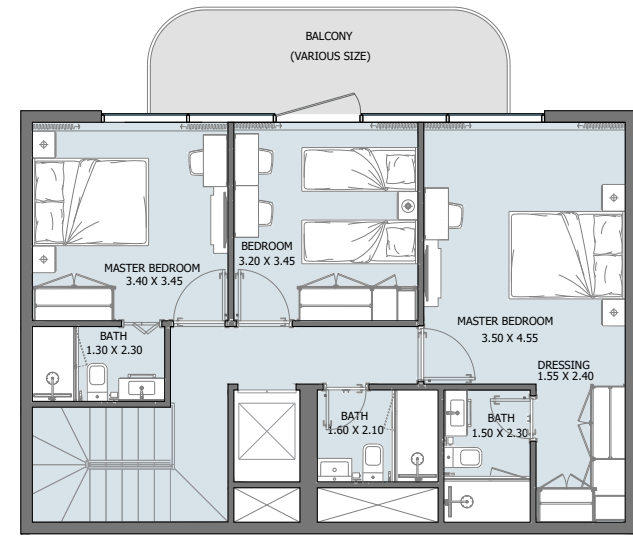
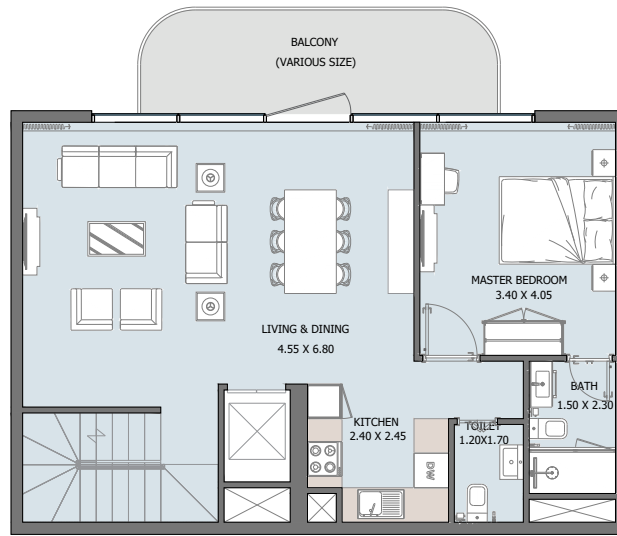
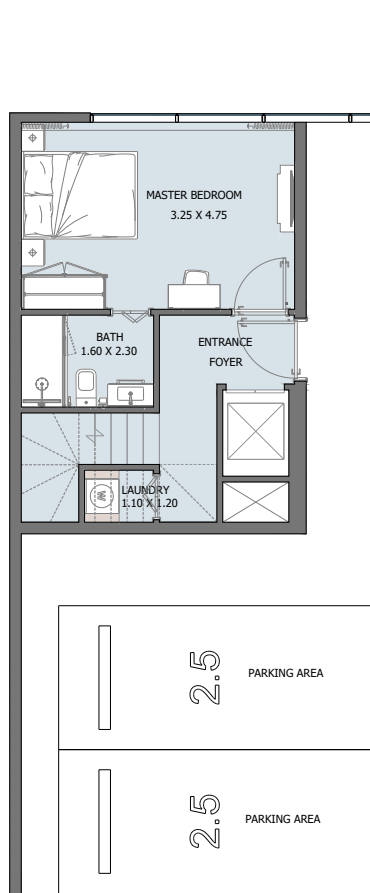


## 5B TOWNHOUSE | Type A

P1 Floor

Internal Area	1881.96 sq.ft
Outdoor Area	199.99 sq.ft
Total Area	2081.95 sq.ft

All drawings and dimensions are approximate. Drawings are not to scale and are subject to change without notice. The developer reserves the right to make revisions. The units are measured at typical floors in the building and columns may vary in size depending on the floor level. The furnishing and accessories shown are for representation only. The availability, length and width of the balcony varies depending on which floor and which orientation the unit is located within the building. There will be slight differences in the internal areas between the same unit types depending on the shaft sizes that go through the units.

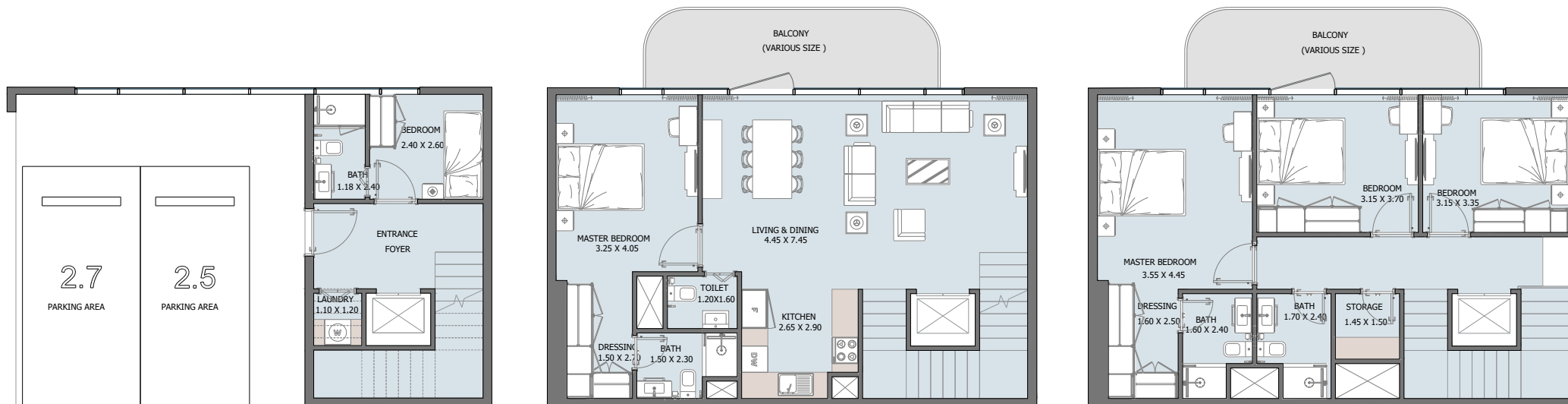


## 5B TOWNHOUSE | Type B

P1 Floor

Internal Area	1948.05 sq.ft
Outdoor Area	234.87 sq.ft
<b>Total Area</b>	<b>2182.92 sq.ft</b>

All drawings and dimensions are approximate. Drawings are not to scale and are subject to change without notice. The developer reserves the right to make revisions. The units are measured at typical floors in the building and columns may vary in size depending on the floor level. The furnishing and accessories shown are for representation only. The availability, length and width of the balcony varies depending on which floor and which orientation the unit is located within the building. There will be slight differences in the internal areas between the same unit types depending on the shaft sizes that go through the units.



## 4B TOWNHOUSE | Type F

P1 Floor

Internal Area	1958.38 to 2017.69 sq.ft
Outdoor Area	254.24 to 263.93 sq.ft
Total Area	2212.63 to 2281.62 sq.ft

All drawings and dimensions are approximate. Drawings are not to scale and are subject to change without notice. The developer reserves the right to make revisions. The units are measured at typical floors in the building and columns may vary in size depending on the floor level. The furnishing and accessories shown are for representation only. The availability, length and width of the balcony varies depending on which floor and which orientation the unit is located within the building. There will be slight differences in the internal areas between the same unit types depending on the shaft sizes that go through the units.



4B TOWNHOUSE | Type G

P1 Floor

Internal Area	1463.68 to 1495.11 sq.ft
Outdoor Area	149.62 to 153.49 sq.ft
Total Area	1613.29 to 1648.60 sq.ft

All drawings and dimensions are approximate. Drawings are not to scale and are subject to change without notice. The developer reserves the right to make revisions. The units are measured at typical floors in the building and columns may vary in size depending on the floor level. The furnishing and accessories shown are for representation only. The availability, length and width of the balcony varies depending on which floor and which orientation the unit is located within the building. There will be slight differences in the internal areas between the same unit types depending on the shaft sizes that go through the units.