

Different horizons

Different horizons

The Muraba Residences, Palm Jumeirah

Designed by the 2017 Pritzker Prize Laureates
RCR Arquitectes

Muraba Residences Palm Jumeirah / RCR Arquitectes

مرج
murabā

www.muraba.ae





Muraba A traditional Emirati word for a building with towers and walls which connect to form a secure home space. Often a landmark, the Muraba becomes a significant part of the identity of its surrounding community.



A unique point of view

Welcome to the Muraba Residences, an architectural gem set on the Eastern Crescent of Palm Jumeirah. It is an exclusive collection of just 46 apartments and 4 penthouses, every one of which is oriented to make the most of the uninterrupted views across the water, right along the skyline of the whole of Dubai.

Every Muraba Residence is perfectly aligned East to West, each apartment having private balconies to watch both the beginning and end of the day. In the morning, you will see the sun rise over the city skyline, directly ahead of you. Sunset will be yours to own from your Western aspect. To the East lie two towering landmarks, the Burj Al Arab and the Burj Khalifa, auspiciously aligned for the perfect view. To the West is the Palm Atlantis at the top of the Crescent.



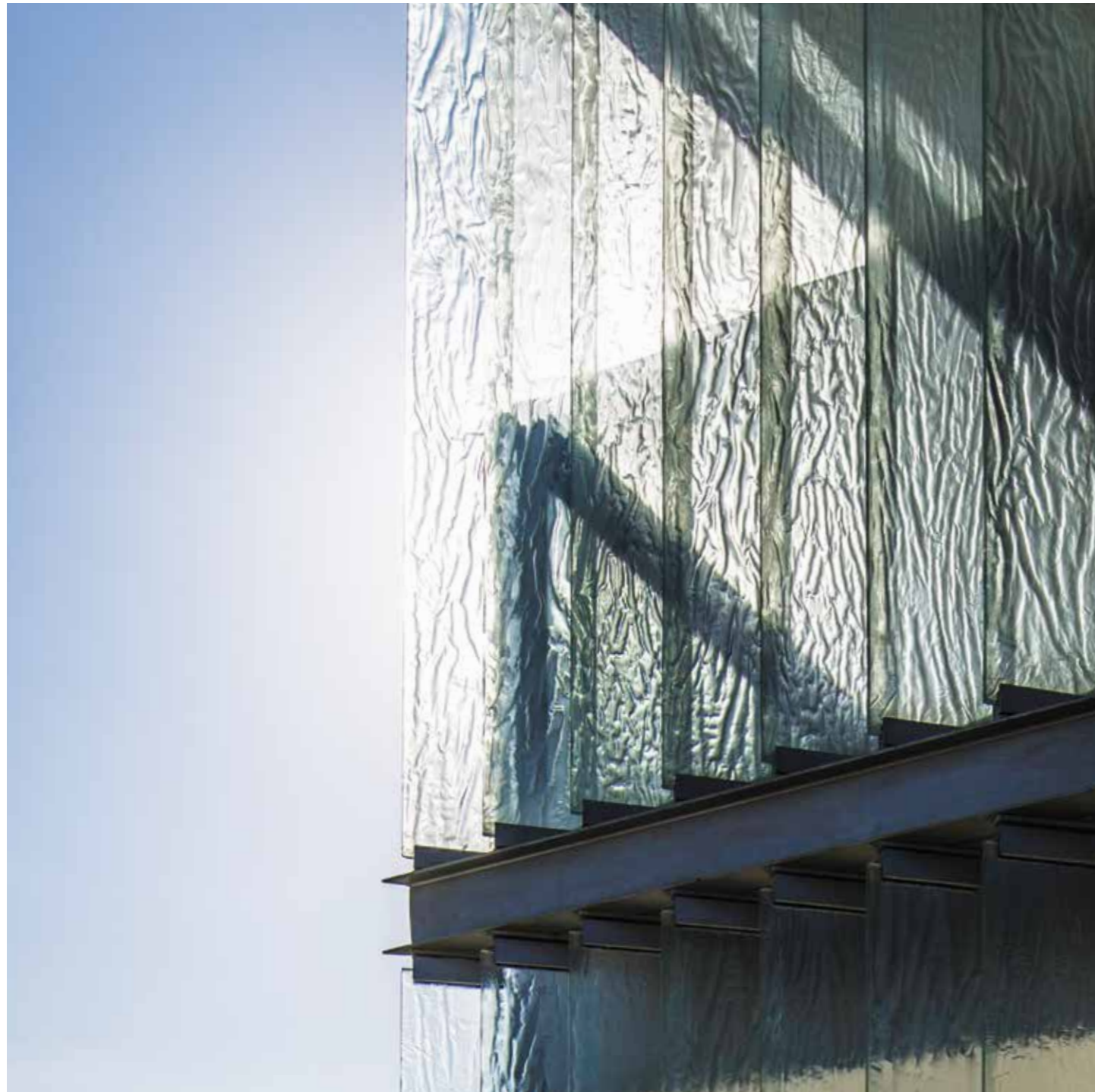
For those with different horizons.

To look out across a horizon is always inspiring. To watch the sun rise over the city – your city – can energize your thoughts and crystallize your intuition.

We have only five senses through which we interact with the world; the doors of perception, so they say. But what about the other senses? A sense of adventure, a sense of achievement, of well-being, of balance, of pride in one's work? These are the things we build our world around.

The apartments we have created are designed with a certain sensibility in mind. A considered visual aesthetic, yes, but also a conscious desire to create a positive ambience, a connection with the environment that may not be entirely tangible.

Light is an integral element. How it behaves throughout the day. How it moves throughout the rooms. Open, but without compromising privacy. To be at home is to be entirely at ease with your surroundings. The space, the flow, entirely in tune. Ultimately this is what we would like you to sense in our design.



It's different here.

It is impossible to define the word 'quality', equally difficult to define 'good taste'; perhaps it is easier simply to recognise it when it is discovered.

From the very beginning, and during the whole development process of the Muraba Residences, we thought deeply and collaboratively about what this space could become, on a very human level. The enduring philosophy and final form of the building, have been based on sound design principles with the resident always in mind.

Even so, we must accept that our chosen aesthetic may not appeal to everyone, and I'm sure this will in fact be part of the attraction to those who choose to live here. But one thing has always been clear to me, there is no substitute for impeccable detailing and execution. It is this deep thinking, followed through with great attention to detail, that sets the Muraba Residences apart, and will continue to do so for many years to come.

I would like to invite you to visit and explore the building, enjoy its light and space, be inspired by the views across one of the world's most exciting and dynamic cities, and let me know your thoughts.

The experience of working with RCR, and seeing the building develop from concept to completion has certainly been a very important part of my own life. Perhaps you too will be inspired to live here and make the building a part of your own story. I would very much welcome that.

Ibrahim Al Ghurair



The Residences

The Muraba Residences are very much the result of a collaborative vision. In 2014, Ibrahim Al Ghurair met with RCR Arquitectes in their home town of Olot, Catalonia, and quickly realised that their particular philosophy of design and architecture resonated perfectly with what he wanted to achieve.

With so much development activity happening in Dubai and the region, it can be all too easy for discussions about sensitive and thoughtful architecture to be lost amid the noise of rapid building and strident economic progress. RCR's approach has always been one of careful consideration and teamwork, interrogating each local landscape to develop a design which is specific to its location and purpose, and which will stand the test of time.

Their unique approach has seen the team receive many awards throughout their career. Most recently they have been recognised as winners of the 2017 Pritzker Prize, perhaps the highest global accolade in architecture, now placing RCR in the company of such revered names as Jean Nouvel, Renzo Piano, Zaha Hadid, Norman Foster, Richard Rogers, IM Pei and Shigeru Ban.

This is of course a great affirmation of Ibrahim's initial decision to work with RCR, but perhaps the most tangible evidence of how collaboration and dialogue can be so effective within a rigorous design process, is the building itself, now it is complete.



Living room

Floor-to-ceiling windows make the most of the panoramic views across the Dubai skyline, and create a minimal transition between interior and exterior spaces. A key part of the building's design is to balance maximum visibility with the requirements of each resident's privacy. This is achieved by incorporating an innovative louvred glazing system into the exterior of every facade. It allows each resident to make the most of the vistas, whilst restricting the view into the apartment from other angles.



Kitchen and dining areas

Clean lines, open spaces and the careful consideration of light are the main themes of the interior layout. Each part of the apartment flows almost seamlessly into the next. This means that, although each area has a clearly defined functionality, the sense of connection with the whole space –an holistic living experience–is never lost.





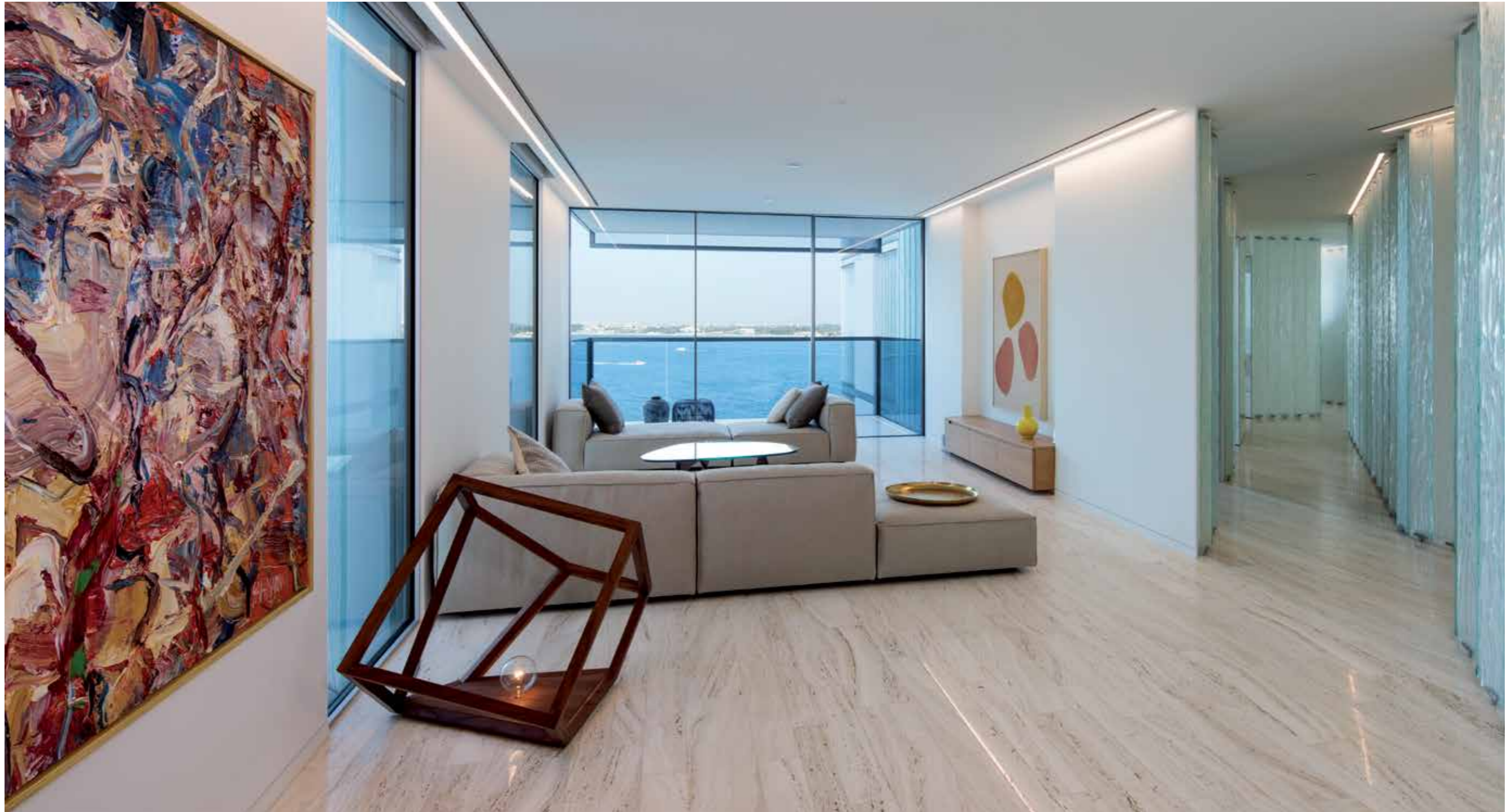
Master bathroom

Careful attention to detail creates a space that is contemporary and yet intimate. The challenge was to maintain the feeling of lightness and open-ness experienced in the rest of the home, whilst affording privacy when required. This has been achieved by focusing on the quality of line, texture and the introduction of light as a key design element. Each feature has been deliberately chosen to create a space that is at once 'of' the apartment, and yet separate.



The Penthouses

Every aspect of the Muraba Residences is the epitome of considered design and flawless execution, expressed within a fluent international aesthetic. Crowning this unique building are four penthouses, for those who want to take the Muraba living experience to the next level. Each penthouse has an extraordinary amount of indoor and outdoor space, with five double bedrooms (two with private balconies), extended living areas and a private elevator lobby. The generous outdoor living spaces are equally suited to entertaining or relaxing in private. You'll enjoy unmatched views over Dubai, as well as the open skies over the Arabian Gulf as they become the perfect backdrop to your life.



Expansive space for living

Light and open spaces are inter-connected seamlessly to make the most of the large floor areas available, while at the same time remaining immersed in the environment; skies, water and inspiring views.





Extended kitchen & dining

When it comes to creating a great evening for friends, the sky's the limit. Every chef knows the importance of kitchen layout —everything in it's right place—but when you're entertaining guests at home you want to maintain the flow of the event, as well as the conversation. Here, there is a natural fluency between the cooking area, the indoor and outdoor dining spaces, and beyond to the city lights.



Additional professional kitchen

For those who entertain large numbers at home, each Penthouse comes complete with a fully equipped professional kitchen, ideal for caterers or staff.

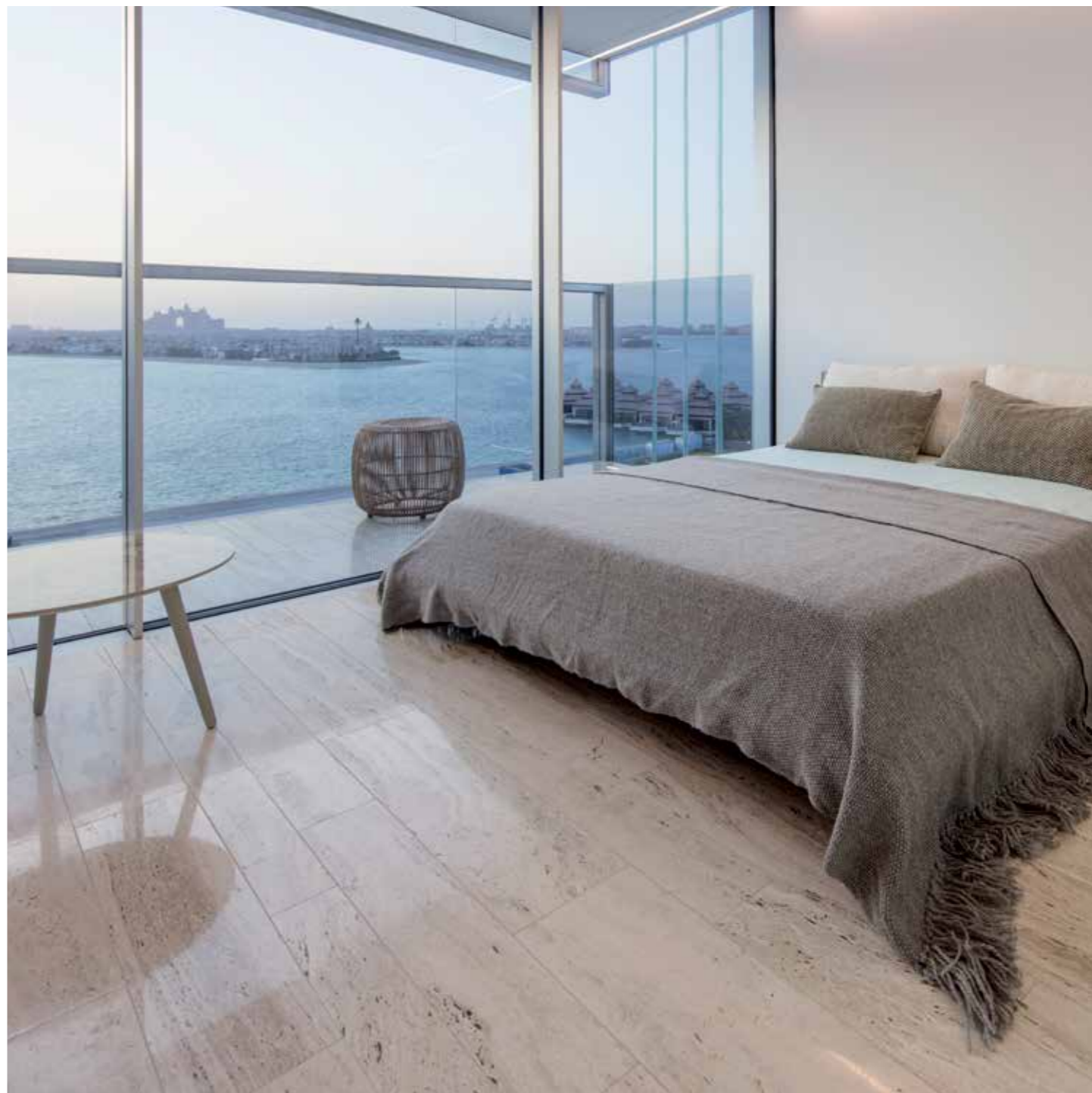


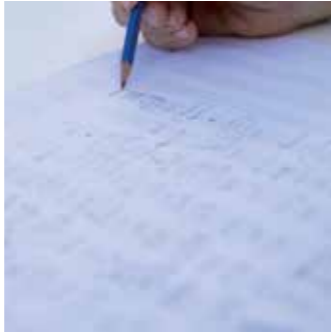




Master bedroom

The master suite is laid out in a linear progression that considers the dressing room, the bathroom and bedroom as a coherent space, culminating in the private balcony and panoramic vista across the Palm. The result is a sense of balance and clarity; the right way to start the day, or conclude it.

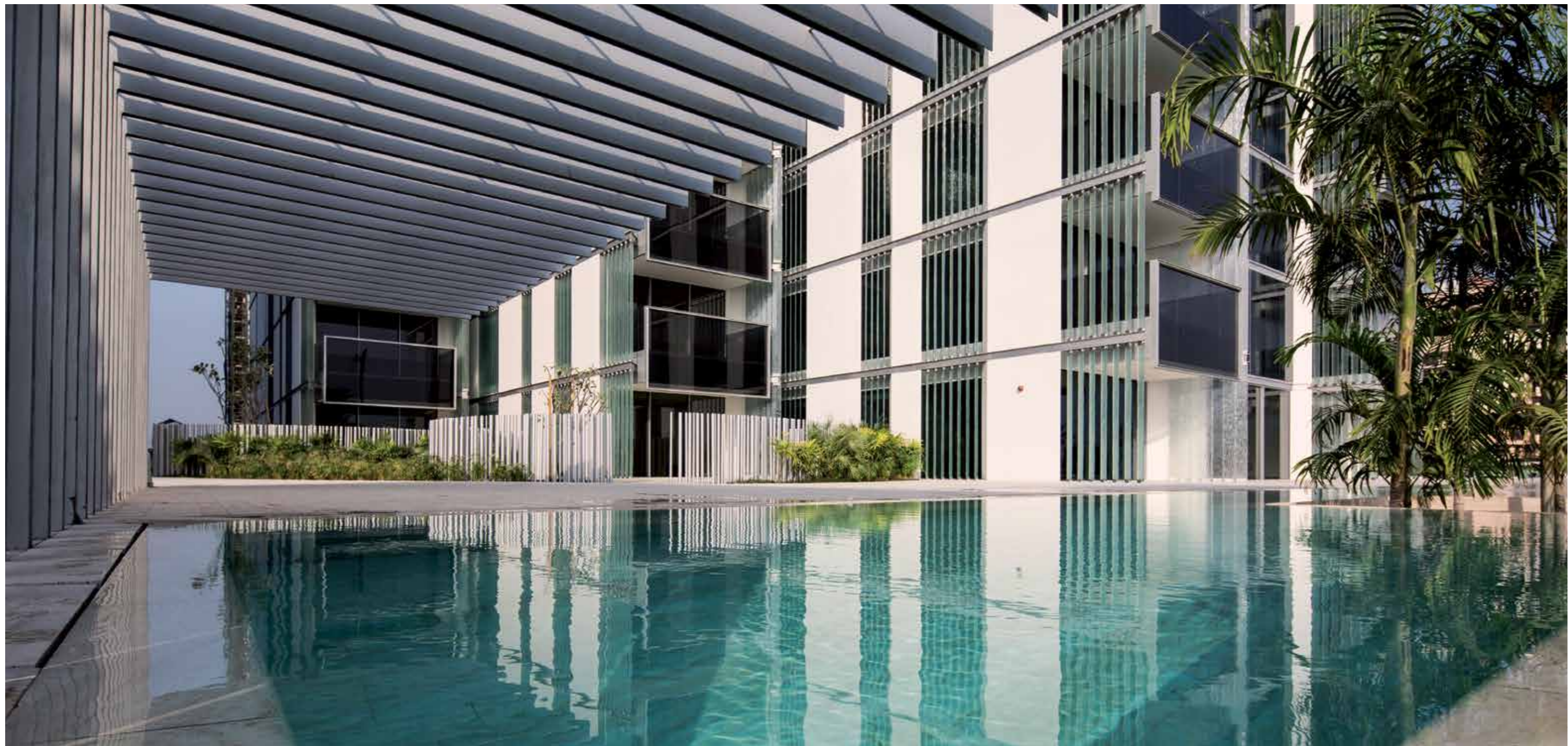






The Amenities

When it's time to relax you won't need to travel far. The Muraba Residences boast a beautiful swimming pool area overlooking the Arabian Gulf and the city skyline to the East. The pool extends across the full width of the building's facade and is connected to the indoor gym which is equipped with the latest gear. For the ultimate in relaxation, enjoy the therapeutic Vitality Pool, Crystal Steam Room and Experience Shower. All amenities are available for the exclusive use by residents.





Fully equipped gym

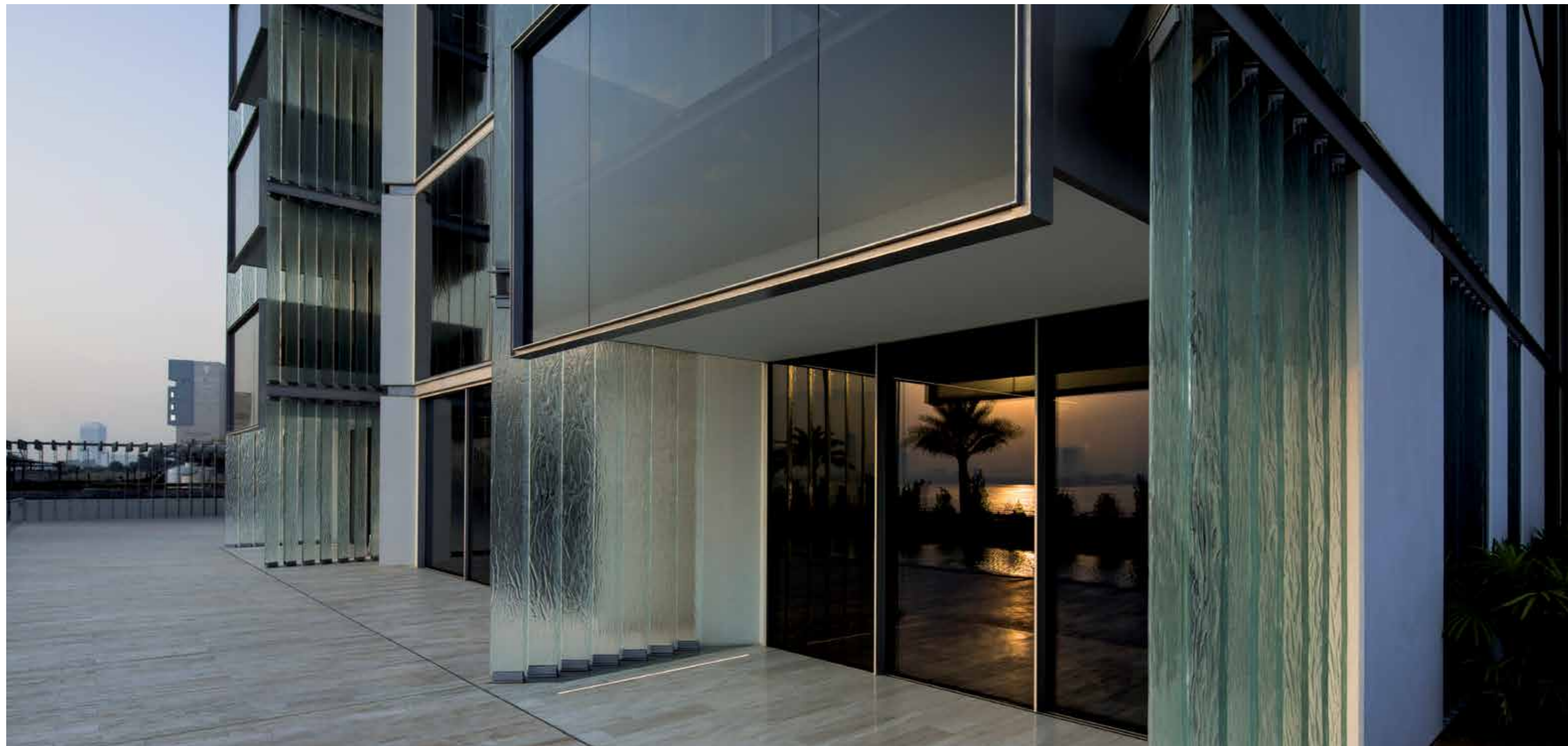
The gym is fitted with the latest equipment and the floor to ceiling windows mean you can work out while you gaze over the pool and the skyline beyond.





Vitality Pool

Let your creative thoughts flow when your mind and body is at its most relaxed. At the spa's core is the Aqua Tonic vitality pool, and both his and her spa areas are equipped with Experience Showers and Crystal Steam Rooms.







Success is in the details

With such clean lines, flawless finishes and light open spaces, attention to detail is paramount. All the fittings, fixtures and appliances within each apartment have been hand-picked to complement perfectly the overall concept. Ultra-slim profile sliding doors and windows create the most discreet boundary possible between interior and external spaces, whilst maintaining the highest level of environmental control and functionality.

Vision is one thing, execution is quite another matter, but it is this attention to detail that sets the Muraba Residences apart, and will continue to do so for many years to come.



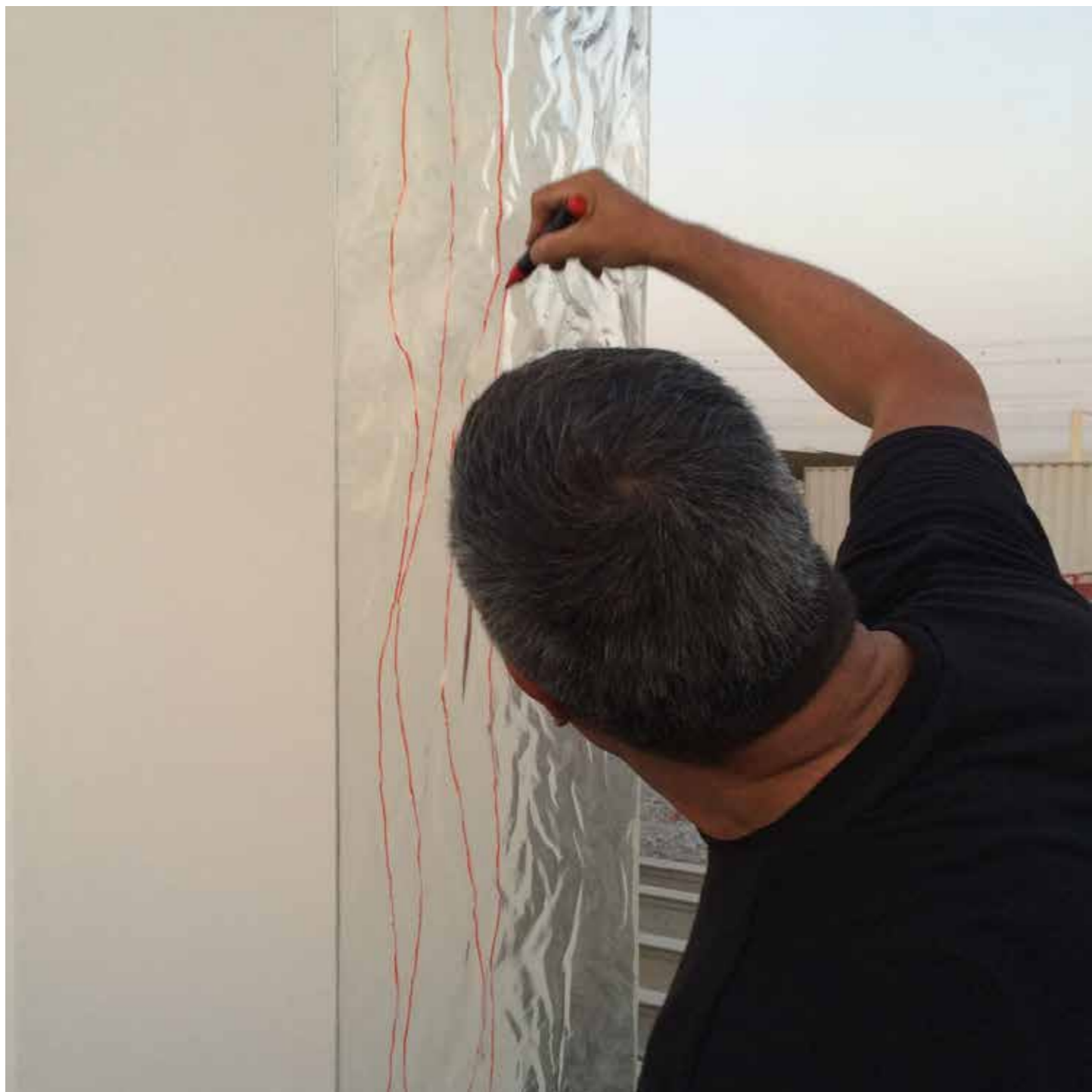


RCR Arquitectes Pritzker Prize Laureates 2017



"Innovation does not occur in isolation, but as a result of the joining together of different disciplines which can unite and give the best of themselves only after extensive examination. In architecture, innovation is often portrayed as something superfluous, perhaps merely something linked to design. But we shall only have real innovation if it is also at the origin of the concept, in the programme itself and in the material and the construction techniques; we shall only have it if it is present from the first moment, when the need becomes a question to answer, and if that question is considered by all the participants in the answer. Only something which improves a person's experience qualitatively can be really innovating."

Rafael Aranda, Carme Pigem and Ramon Vilalta – RCR Arquitectes





Llar d'infants els colors.



Private residence, Catalonia.



Musée Soulages, Rodez, France.



Pavilion at Les Cols, Olot.



Living on the Palm is like living in a different world

When the vision for Palm Jumeirah was announced in 2001, it was met with a mixture of amazement and incredulity. It has since risen from the sea to become one of the world's most recognisable and desirable locations to live. At the same time it is also a neighbourhood with a distinctive identity. Palm living is different. Fresh air, open vistas, tranquil beaches; but within minutes you can be in Dubai's free zones and central business district. As Dubai's largest waterfront community, there is high demand to access this exclusive domain. There is only one Palm Jumeirah.



Dubai is Arabia's World City

Dubai is a phenomenon. In just a few decades it has grown from a sleepy creekside village to a thriving metropolis; a world-class business and travel hub. It's ambition and drive made it famous around the globe as it became a top-tier destination for inward investment, international visitors and a home to long-term residents from over 190 different countries. But more than just a magnet for superlatives and records, we have watched as Dubai has matured into a 'real' city. Beyond the first-class physical infrastructure, it is now a place where people can enjoy a cosmopolitan lifestyle—from art to sports, concerts to cuisine—balancing their entrepreneurial flair and energy with the joys of relaxing with family and friends in a vibrant and safe environment. Dubai has always based its economy on its successful business acumen, and with major awards like the 2020 Expo, this momentum is set to continue, providing opportunities in equal measure to those who want to play.



If you would like to discover more about the
Muraba Residences, Palm Jumeirah,
or arrange a private viewing, please call
+971 4 325 3144 or visit **www.muraba.ae**



مُرَبَّاعَة
murabā

