

# *Floor Plans*



# VIVANTI

RESIDENCES BY METEORA

www.meteoradevelopers.com

RERA No. 2558

# A

SERIES

SOAK IN THE  
VIBES OF THE  
PODIUM LIFE

01  
FLOOR

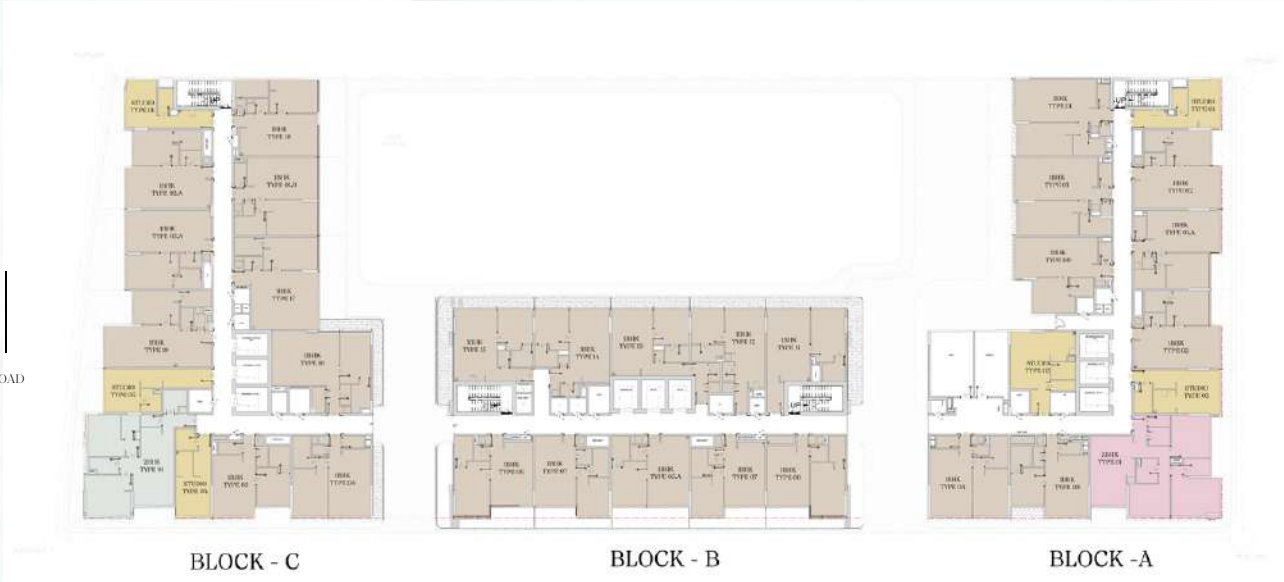
BLOCK A  
101, 102, 103, 104, 105,  
106, 107, 108, 109, 110,  
111, 112

BLOCK B  
101, 102, 103, 104, 105,  
106, 107, 108, 109, 110

BLOCK C  
101, 102, 103, 104, 105,  
106, 107, 108, 109, 110,  
111, 112, 113  
UNITS



PODIUM +  
SWIMMING  
POOL



- 1 BEDROOM APARTMENT
- 2 BEDROOM APARTMENT
- 3 BEDROOM APARTMENT
- STUDIO APARTMENT



MAIN ROAD

# VIVANTI

RESIDENCES BY METEORA

www.meteoradevelopers.com

RERA No. 2558

# B

SERIES

SOAK IN THE  
VIBES OF THE  
PODIUM LIFE

02-03  
FLOORS

BLOCK A  
X01, X02, X03, X04,  
X05, X06, X07, X08,  
X09, X10, X11, X12

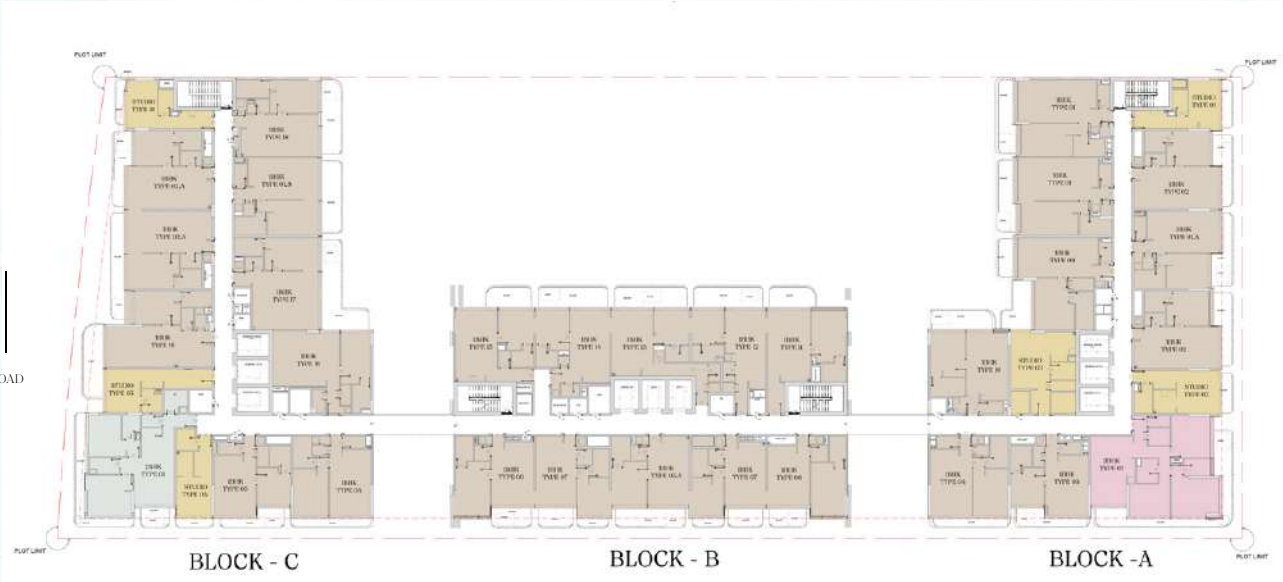
BLOCK B  
X01, X02, X03, X04,  
X05, X06, X07, X08,  
X09, X10

BLOCK C  
X01, X02, X03, X04,  
X05, X06, X07, X08,  
X09, X10, X11, X12,  
X13

UNITS



PODIUM +  
SWIMMING  
POOL



- 1 BEDROOM APARTMENT
- 2 BEDROOM APARTMENT
- 3 BEDROOM APARTMENT
- STUDIO APARTMENT



MAIN ROAD

**Disclaimer:** 1. All room dimensions are measured to structural elements and exclude wall finishes and construction tolerances. 2. All dimensions have been provided by our consultant architects. 3. All materials, dimensions and drawings are approximate. Information is subject to change without notice. 4. Actual suite area may vary from the stated area. Drawings not to scale. The developer reserves the right to make revisions. 5. Calculation of suite area is measured as the area bounded by the centre line of demising or partition walls separating one unit from another unit, the exterior face of all exterior walls, and the exterior face of the corridor wall enclosing the adjoining unit. 6. Calculation of balcony area is measured as the area bounded by the centre line of demising or partition walls separating one unit from another unit, the outmost face of the enclosing guard and the external face of the adjoining balcony. 7. The units are measured at typical floor in the building. Columns may vary in size depending on the floor level. 8. For each unit type, unit sizes and details might be slightly different. Please refer to the sales and purchase agreement for the actual size of each specific unit.

**Disclaimer:** 1. All room dimensions are measured to structural elements and exclude wall finishes and construction tolerances. 2. All dimensions have been provided by our consultant architects. 3. All materials, dimensions and drawings are approximate. Information is subject to change without notice. 4. Actual suite area may vary from the stated area. Drawings not to scale. The developer reserves the right to make revisions. 5. Calculation of suite area is measured as the area bounded by the centre line of demising or partition walls separating one unit from another unit, the exterior face of all exterior walls, and the exterior face of the corridor wall enclosing the adjoining unit. 6. Calculation of balcony area is measured as the area bounded by the centre line of demising or partition walls separating one unit from another unit, the outmost face of the enclosing guard and the external face of the adjoining balcony. 7. The units are measured at typical floor in the building. Columns may vary in size depending on the floor level. 8. For each unit type, unit sizes and details might be slightly different. Please refer to the sales and purchase agreement for the actual size of each specific unit.



# VIVANTI

RESIDENCES BY METEORA

www.meteoradevelopers.com

RERA No. 2558

# C

SERIES

SOAK IN THE  
VIBES OF THE  
PODIUM LIFE

04  
FLOOR

BLOCK A  
X01, X02, X03, X04,  
X05, X06, X07, X08,  
X09, X10, X11, X12,  
X13, X14, X15

BLOCK B  
X01, X02, X03, X04,  
X05, X06, X07, X08,  
X09, X10

BLOCK C  
X01, X02, X03, X04,  
X05, X06, X07, X08,  
X09, X10, X11, X12,  
X13, X14, X15  
UNITS



PODIUM +  
SWIMMING  
POOL



1 BEDROOM APARTMENT  
2 BEDROOM APARTMENT  
3 BEDROOM APARTMENT  
STUDIO APARTMENT



MAIN ROAD

# VIVANTI

RESIDENCES BY METEORA

www.meteoradevelopers.com

RERA No. 2558

# D

SERIES

SOAK IN THE  
VIBES OF THE  
PODIUM LIFE

05-09  
FLOORS

BLOCK A  
X01, X02, X03, X04,  
X05, X06, X07, X08,  
X09, X10, X11, X12,  
X13, X14, X15

BLOCK B  
X01, X02, X03, X04,  
X05, X06, X07, X08,  
X09, X10

BLOCK C  
X01, X02, X03, X04,  
X05, X06, X07, X08,  
X09, X10, X11, X12,  
X13, X14, X15  
UNITS



PODIUM +  
SWIMMING  
POOL



1 BEDROOM APARTMENT  
2 BEDROOM APARTMENT  
3 BEDROOM APARTMENT  
STUDIO APARTMENT



MAIN ROAD

**Disclaimer:** 1. All room dimensions are measured to structural elements and exclude wall finishes and construction tolerances. 2. All dimensions have been provided by our consultant architects. 3. All materials, dimensions and drawings are approximate. Information is subject to change without notice. 4. Actual suite area may vary from the stated area. Drawings not to scale. The developer reserves the right to make revisions. 5. Calculation of suite area is measured as the area bounded by the centre line of demising or partition walls separating one unit from another unit, the exterior face of all exterior walls, and the exterior face of the corridor wall enclosing the adjoining unit. 6. Calculation of balcony area is measured as the area bounded by the centre line of demising or partition walls separating one unit from another unit, the outmost face of the enclosing guard and the external face of the adjoining balcony. 7. The units are measured at typical floor in the building. Columns may vary in size depending on the floor level. 8. For each unit type, unit sizes and details might be slightly different. Please refer to the sales and purchase agreement for the actual size of each specific unit.

**Disclaimer:** 1. All room dimensions are measured to structural elements and exclude wall finishes and construction tolerances. 2. All dimensions have been provided by our consultant architects. 3. All materials, dimensions and drawings are approximate. Information is subject to change without notice. 4. Actual suite area may vary from the stated area. Drawings not to scale. The developer reserves the right to make revisions. 5. Calculation of suite area is measured as the area bounded by the centre line of demising or partition walls separating one unit from another unit, the exterior face of all exterior walls, and the exterior face of the corridor wall enclosing the adjoining unit. 6. Calculation of balcony area is measured as the area bounded by the centre line of demising or partition walls separating one unit from another unit, the outmost face of the enclosing guard and the external face of the adjoining balcony. 7. The units are measured at typical floor in the building. Columns may vary in size depending on the floor level. 8. For each unit type, unit sizes and details might be slightly different. Please refer to the sales and purchase agreement for the actual size of each specific unit.



VIVANTI  
RESIDENCES BY METEORA

www.meteoradevelopers.com

RERA No. 2558

E  
SERIES

SOAK IN THE  
VIBES OF THE  
PODIUM LIFE

10  
FLOOR

BLOCK A  
X01, X02, X03, X04,  
X05, X06, X07, X08,  
X09, X10, X11, X12,  
X13, X14

BLOCK B  
X01, X02, X03, X04,  
X05, X06, X07, X08,  
X09, X10

BLOCK C  
X01, X02, X03, X04,  
X05, X06, X07, X08,  
X09, X10, X11

UNITS



PODIUM +  
SWIMMING  
POOL



- 1 BEDROOM APARTMENT
- 2 BEDROOM APARTMENT
- 3 BEDROOM APARTMENT
- STUDIO APARTMENT

MAIN ROAD

VIVANTI  
RESIDENCES BY METEORA

www.meteoradevelopers.com

RERA No. 2558

F  
SERIES

SOAK IN THE  
VIBES OF THE  
PODIUM LIFE

11  
FLOOR

BLOCK A  
X01, X02, X03, X04,  
X05, X06, X07, X08,  
X09, X10, X11, X12

BLOCK B  
X01, X02, X03, X04,  
X05, X06, X07, X08,  
X09, X10

BLOCK C  
X01, X02, X03, X04,  
X05, X06, X07, X08,  
X09  
UNITS



PODIUM +  
SWIMMING  
POOL



- 1 BEDROOM APARTMENT
- 2 BEDROOM APARTMENT
- 3 BEDROOM APARTMENT
- STUDIO APARTMENT

MAIN ROAD

**Disclaimer:** 1. All room dimensions are measured to structural elements and exclude wall finishes and construction tolerances. 2. All dimensions have been provided by our consultant architects. 3. All materials, dimensions and drawings are approximate. Information is subject to change without notice. 4. Actual suite area may vary from the stated area. Drawings not to scale. The developer reserves the right to make revisions. 5. Calculation of suite area is measured as the area bounded by the centre line of demising or partition walls separating one unit from another unit, the exterior face of all exterior walls, and the exterior face of the corridor wall enclosing the adjoining unit. 6. Calculation of balcony area is measured as the area bounded by the centre line of demising or partition walls separating one unit from another unit, the outmost face of the enclosing guard and the external face of the adjoining balcony. 7. The units are measured at typical floor in the building. Columns may vary in size depending on the floor level. 8. For each unit type, unit sizes and details might be slightly different. Please refer to the sales and purchase agreement for the actual size of each specific unit.

**Disclaimer:** 1. All room dimensions are measured to structural elements and exclude wall finishes and construction tolerances. 2. All dimensions have been provided by our consultant architects. 3. All materials, dimensions and drawings are approximate. Information is subject to change without notice. 4. Actual suite area may vary from the stated area. Drawings not to scale. The developer reserves the right to make revisions. 5. Calculation of suite area is measured as the area bounded by the centre line of demising or partition walls separating one unit from another unit, the exterior face of all exterior walls, and the exterior face of the corridor wall enclosing the adjoining unit. 6. Calculation of balcony area is measured as the area bounded by the centre line of demising or partition walls separating one unit from another unit, the outmost face of the enclosing guard and the external face of the adjoining balcony. 7. The units are measured at typical floor in the building. Columns may vary in size depending on the floor level. 8. For each unit type, unit sizes and details might be slightly different. Please refer to the sales and purchase agreement for the actual size of each specific unit.



# VIVANTI

RESIDENCES BY METEORA

[www.meteoradevelopers.com](http://www.meteoradevelopers.com)

RERA No. 2558

# G

SERIES

SOAK IN THE  
VIBES OF THE  
PODIUM LIFE

12  
FLOOR

BLOCK B  
X01, X02, X03, X04,  
X05, X06, X07, X08,  
X09, X10  
UNITS



PODIUM +  
SWIMMING  
POOL



- 1 BEDROOM APARTMENT
- 2 BEDROOM APARTMENT
- 3 BEDROOM APARTMENT
- STUDIO APARTMENT



MAIN ROAD

# VIVANTI

RESIDENCES BY METEORA

[www.meteoradevelopers.com](http://www.meteoradevelopers.com)

RERA No. 2558

# H

SERIES

SOAK IN THE  
VIBES OF THE  
PODIUM LIFE

13-15  
FLOOR

BLOCK B  
X01, X02, X03, X04,  
X05, X06, X07, X08,  
X09, X10  
UNITS



PODIUM +  
SWIMMING  
POOL



- 1 BEDROOM APARTMENT
- 2 BEDROOM APARTMENT
- 3 BEDROOM APARTMENT
- STUDIO APARTMENT



MAIN ROAD

**Disclaimer:** 1. All room dimensions are measured to structural elements and exclude wall finishes and construction tolerances. 2. All dimensions have been provided by our consultant architects. 3. All materials, dimensions and drawings are approximate. Information is subject to change without notice. 4. Actual suite area may vary from the stated area. Drawings not to scale. The developer reserves the right to make revisions. 5. Calculation of suite area is measured as the area bounded by the centre line of demising or partition walls separating one unit from another unit, the exterior face of all exterior walls, and the exterior face of the corridor wall enclosing the adjoining unit. 6. Calculation of balcony area is measured as the area bounded by the centre line of demising or partition walls separating one unit from another unit, the outmost face of the enclosing guard and the external face of the adjoining balcony. 7. The units are measured at typical floor in the building. Columns may vary in size depending on the floor level. 8. For each unit type, unit sizes and details might be slightly different. Please refer to the sales and purchase agreement for the actual size of each specific unit.

**Disclaimer:** 1. All room dimensions are measured to structural elements and exclude wall finishes and construction tolerances. 2. All dimensions have been provided by our consultant architects. 3. All materials, dimensions and drawings are approximate. Information is subject to change without notice. 4. Actual suite area may vary from the stated area. Drawings not to scale. The developer reserves the right to make revisions. 5. Calculation of suite area is measured as the area bounded by the centre line of demising or partition walls separating one unit from another unit, the exterior face of all exterior walls, and the exterior face of the corridor wall enclosing the adjoining unit. 6. Calculation of balcony area is measured as the area bounded by the centre line of demising or partition walls separating one unit from another unit, the outmost face of the enclosing guard and the external face of the adjoining balcony. 7. The units are measured at typical floor in the building. Columns may vary in size depending on the floor level. 8. For each unit type, unit sizes and details might be slightly different. Please refer to the sales and purchase agreement for the actual size of each specific unit.



VIVANTI  
RESIDENCES BY METEORA

[www.meteoradevelopers.com](http://www.meteoradevelopers.com)

RERA No. 2558

I  
SERIES

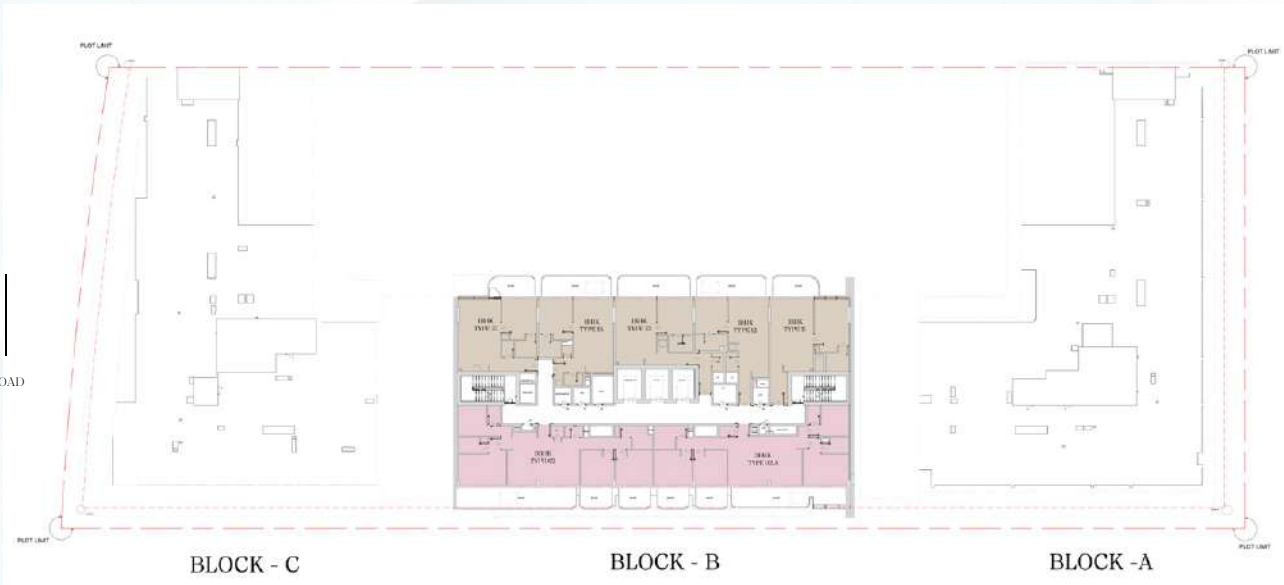
SOAK IN THE  
VIBES OF THE  
PODIUM LIFE

16-17  
FLOOR

BLOCK B  
X01, X02, X03, X04,  
X05, X06  
UNITS



PODIUM +  
SWIMMING  
POOL



- 1 BEDROOM APARTMENT
- 2 BEDROOM APARTMENT
- 3 BEDROOM APARTMENT
- STUDIO APARTMENT

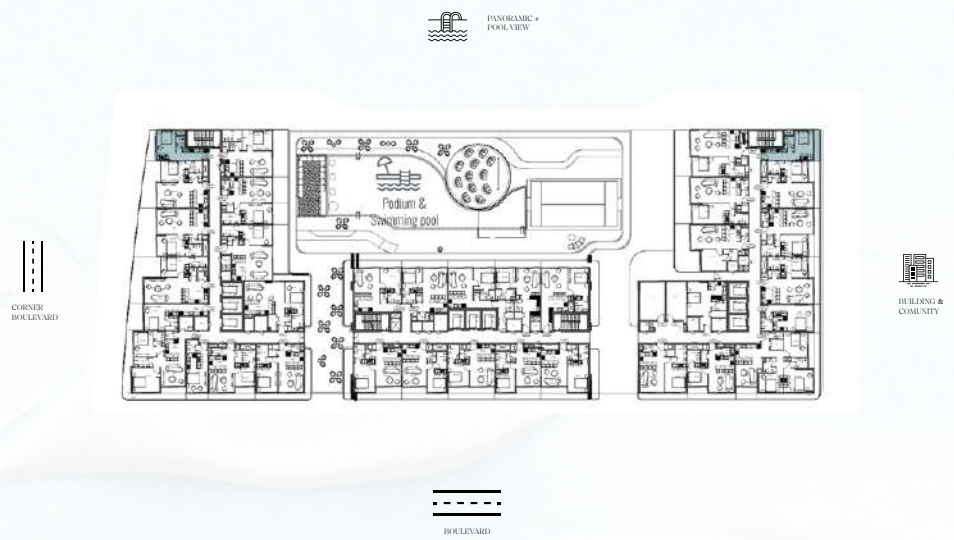


MAIN ROAD

# Unit Types & Layouts

**Disclaimer:** 1. All room dimensions are measured to structural elements and exclude wall finishes and construction tolerances. 2. All dimensions have been provided by our consultant architects. 3. All materials, dimensions and drawings are approximate. Information is subject to change without notice. 4. Actual suite area may vary from the stated area. Drawings not to scale. The developer reserves the right to make revisions. 5. Calculation of suite area is measured as the area bounded by the centre line of demising or partition walls separating one unit from another unit, the exterior face of all exterior walls, and the exterior face of the corridor wall enclosing the adjoining unit. 6. Calculation of balcony area is measured as the area bounded by the centre line of demising or partition walls separating one unit from another unit, the outmost face of the enclosing guard and the external face of the adjoining balcony. 7. The units are measured at typical floor in the building. Columns may vary in size depending on the floor level. 8. For each unit type, unit sizes and details might be slightly different. Please refer to the sales and purchase agreement for the actual size of each specific unit.





STUDIO APARTMENT

A,C  
BLOCK

01-09  
FLOORS

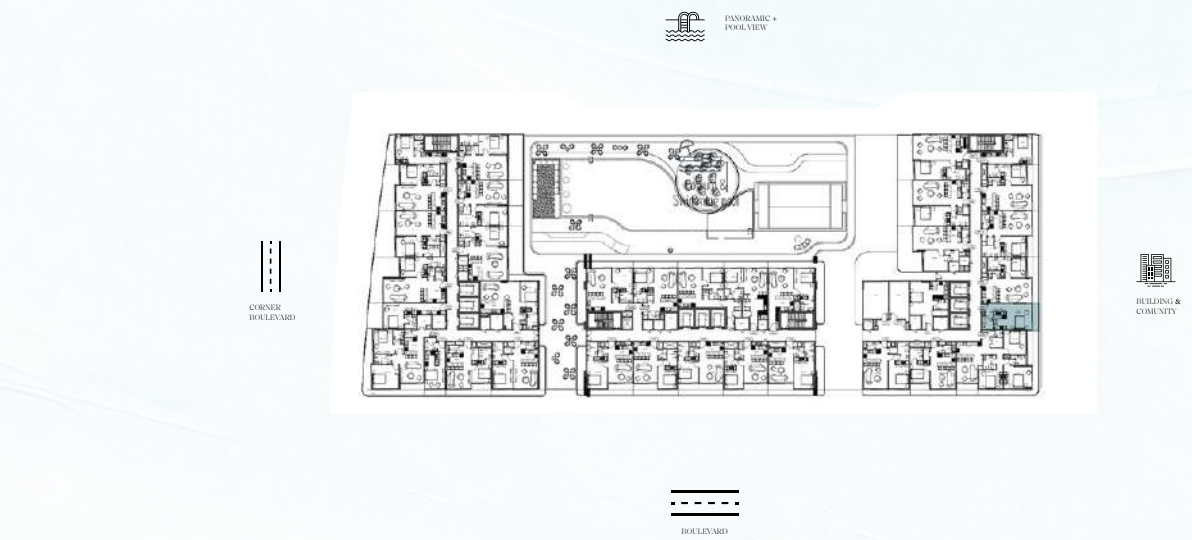
01  
TYPE

372.64  
AREA sq. ft.  
APT 316.78 + BAL 55.86

VIEW  
CORNER  
BOULEVARD  
BUILDING &  
COMUNITY

List of unit numbers with this type, BLOCK A: 0109, 0210, 0310, 0412, 0512, 0612, 0712, 0812, 0912.  
List of unit numbers with this type, BLOCK C: 0104, 0204, 0304, 0404, 0504, 0604, 0704, 0804, 0904.

**Disclaimer:** 1. All room dimensions are measured to structural elements and exclude wall finishes and construction tolerances. 2. All dimensions have been provided by our consultant architects. 3. All materials, dimensions and drawings are approximate. Information is subject to change without notice. 4. Actual suite area may vary from the stated area. Drawings not to scale. The developer reserves the right to make revisions. 5. Calculation of suite area is measured as the area bounded by the centre line of demising or partition walls separating one unit from another unit, the exterior face of all exterior walls, and the exterior face of the corridor wall enclosing the adjoining unit. 6. Calculation of balcony area is measured as the area bounded by the centre line of demising or partition walls separating one unit from another unit, the outmost face of the enclosing guard and the external face of the adjoining balcony. 7. The units are measured at typical floor in the building. Columns may vary in size depending on the floor level. 8. For each unit type, unit sizes and details might be slightly different. Please refer to the sales and purchase agreement for the actual size of each specific unit.



STUDIO APARTMENT

A  
BLOCK

01-09  
FLOORS

02  
TYPE

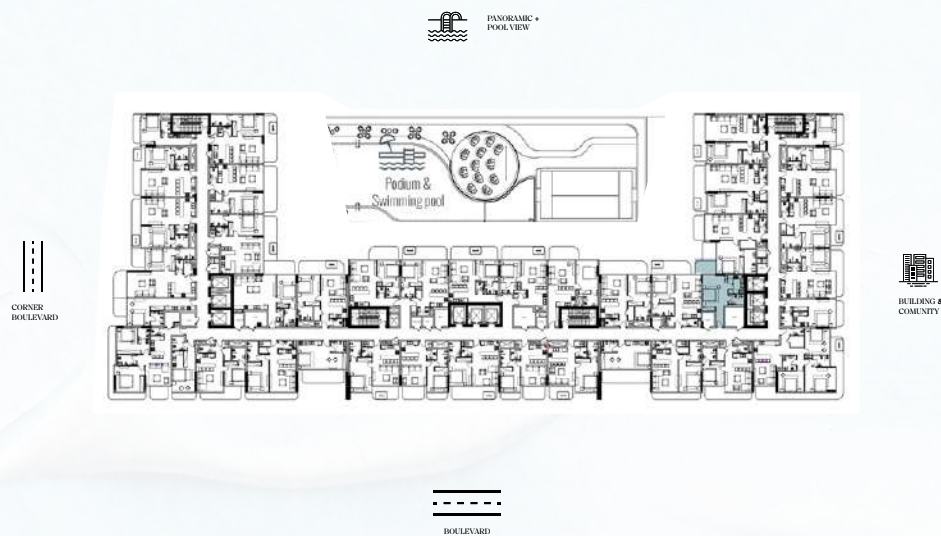
446.91  
AREA sq. ft.  
APT 401.27 + BAL 45.63

VIEW  
BUILDING &  
COMUNITY

List of unit numbers with this type, BLOCK A: 0105, 0202, 0302, 0408, 0508, 0608, 0708, 0808, 0908.

**Disclaimer:** 1. All room dimensions are measured to structural elements and exclude wall finishes and construction tolerances. 2. All dimensions have been provided by our consultant architects. 3. All materials, dimensions and drawings are approximate. Information is subject to change without notice. 4. Actual suite area may vary from the stated area. Drawings not to scale. The developer reserves the right to make revisions. 5. Calculation of suite area is measured as the area bounded by the centre line of demising or partition walls separating one unit from another unit, the exterior face of all exterior walls, and the exterior face of the corridor wall enclosing the adjoining unit. 6. Calculation of balcony area is measured as the area bounded by the centre line of demising or partition walls separating one unit from another unit, the outmost face of the enclosing guard and the external face of the adjoining balcony. 7. The units are measured at typical floor in the building. Columns may vary in size depending on the floor level. 8. For each unit type, unit sizes and details might be slightly different. Please refer to the sales and purchase agreement for the actual size of each specific unit.





STUDIO APARTMENT

A  
BLOCK

04  
FLOOR

03-LM4  
TYPE

459.39  
AREA sq. ft.  
APT 408.09 + BAL 0125

VIEW  
PANORAMIC+  
POOL VIEW

List of unit numbers with this type, BLOCK A: 0401

**Disclaimer:** 1. All room dimensions are measured to structural elements and exclude wall finishes and construction tolerances. 2. All dimensions have been provided by our consultant architects. 3. All materials, dimensions and drawings are approximate. Information is subject to change without notice. 4. Actual suite area may vary from the stated area. Drawings not to scale. The developer reserves the right to make revisions. 5. Calculation of suite area is measured as the area bounded by the centre line of demising or partition walls separating one unit from another unit, the exterior face of all exterior walls, and the exterior face of the corridor wall enclosing the adjoining unit. 6. Calculation of balcony area is measured as the area bounded by the centre line of demising or partition walls separating one unit from another unit, the outmost face of the enclosing guard and the external face of the adjoining balcony. 7. The units are measured at typical floor in the building. Columns may vary in size depending on the floor level. 8. For each unit type, unit sizes and details might be slightly different. Please refer to the sales and purchase agreement for the actual size of each specific unit.



STUDIO APARTMENT

A  
BLOCK

02, 03  
05-11  
FLOORS

03  
TYPE

530.44  
AREA sq. ft.  
APT 459.18 + BAL 71.25

VIEW  
PANORAMIC+  
POOL VIEW

List of unit numbers with this type, BLOCK A: 0201, 0301, 0501, 0601, 0701, 0801, 0901, 1001, 1101.

**Disclaimer:** 1. All room dimensions are measured to structural elements and exclude wall finishes and construction tolerances. 2. All dimensions have been provided by our consultant architects. 3. All materials, dimensions and drawings are approximate. Information is subject to change without notice. 4. Actual suite area may vary from the stated area. Drawings not to scale. The developer reserves the right to make revisions. 5. Calculation of suite area is measured as the area bounded by the centre line of demising or partition walls separating one unit from another unit, the exterior face of all exterior walls, and the exterior face of the corridor wall enclosing the adjoining unit. 6. Calculation of balcony area is measured as the area bounded by the centre line of demising or partition walls separating one unit from another unit, the outmost face of the enclosing guard and the external face of the adjoining balcony. 7. The units are measured at typical floor in the building. Columns may vary in size depending on the floor level. 8. For each unit type, unit sizes and details might be slightly different. Please refer to the sales and purchase agreement for the actual size of each specific unit.



CORNER  
BOULEVARD

PANORAMIC +  
POOL VIEW



BUILDING &  
COMMUNITY

BOULEVARD



STUDIO APARTMENT

C  
BLOCK

01-09  
FLOORS

04  
TYPE

370.06  
AREA sq. ft.  
APT 327.33 + BAL 42.73

VIEW  
BOULEVARD

List of unit numbers with this type, BLOCK C: 0110, 0210, 0310, 0410, 0510, 0610, 0710, 0810, 0910.

**Disclaimer:** 1. All room dimensions are measured to structural elements and exclude wall finishes and construction tolerances. 2. All dimensions have been provided by our consultant architects. 3. All materials, dimensions and drawings are approximate. Information is subject to change without notice. 4. Actual suite area may vary from the stated area. Drawings not to scale. The developer reserves the right to make revisions. 5. Calculation of suite area is measured as the area bounded by the centre line of demising or partition walls separating one unit from another unit, the exterior face of all exterior walls, and the exterior face of the corridor wall enclosing the adjoining unit. 6. Calculation of balcony area is measured as the area bounded by the centre line of demising or partition walls separating one unit from another unit, the outmost face of the enclosing guard and the external face of the adjoining balcony. 7. The units are measured at typical floor in the building. Columns may vary in size depending on the floor level. 8. For each unit type, unit sizes and details might be slightly different. Please refer to the sales and purchase agreement for the actual size of each specific unit.

PANORAMIC +  
POOL VIEW



BUILDING &  
COMMUNITY

BOULEVARD



STUDIO APARTMENT

C  
BLOCK

01-09  
FLOORS

05  
TYPE

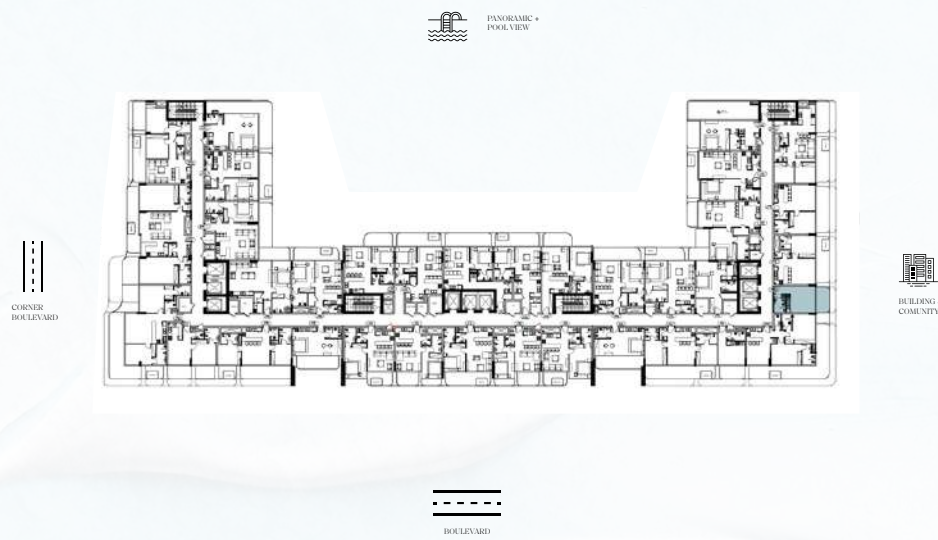
436.58  
AREA sq. ft.  
APT 374.90 + BAL 61.67

VIEW  
CORNER  
BOULEVARD

List of unit numbers with this type, BLOCK C: 0108, 0208, 0308, 0408, 0508, 0608, 0708, 0808, 0908.

**Disclaimer:** 1. All room dimensions are measured to structural elements and exclude wall finishes and construction tolerances. 2. All dimensions have been provided by our consultant architects. 3. All materials, dimensions and drawings are approximate. Information is subject to change without notice. 4. Actual suite area may vary from the stated area. Drawings not to scale. The developer reserves the right to make revisions. 5. Calculation of suite area is measured as the area bounded by the centre line of demising or partition walls separating one unit from another unit, the exterior face of all exterior walls, and the exterior face of the corridor wall enclosing the adjoining unit. 6. Calculation of balcony area is measured as the area bounded by the centre line of demising or partition walls separating one unit from another unit, the outmost face of the enclosing guard and the external face of the adjoining balcony. 7. The units are measured at typical floor in the building. Columns may vary in size depending on the floor level. 8. For each unit type, unit sizes and details might be slightly different. Please refer to the sales and purchase agreement for the actual size of each specific unit.





STUDIO APARTMENT

A  
BLOCK

10-11  
FLOORS

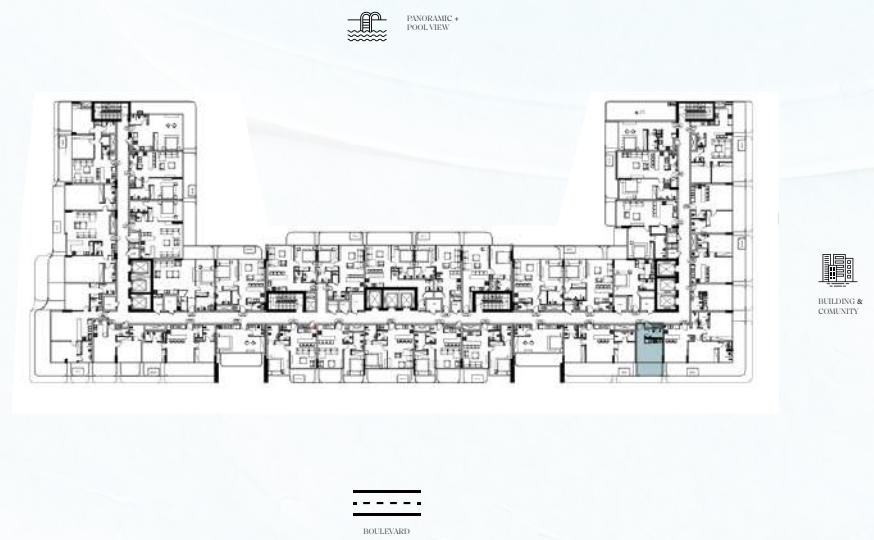
06  
TYPE

393.31  
AREA sq. ft.  
APT 304.83 + BAL 88.47

VIEW  
BUILDING &  
COMUNITY

List of unit numbers with this type, BLOCK A: 1008, 1108.

**Disclaimer:** 1. All room dimensions are measured to structural elements and exclude wall finishes and construction tolerances. 2. All dimensions have been provided by our consultant architects. 3. All materials, dimensions and drawings are approximate. Information is subject to change without notice. 4. Actual suite area may vary from the stated area. Drawings not to scale. The developer reserves the right to make revisions. 5. Calculation of suite area is measured as the area bounded by the centre line of demising or partition walls separating one unit from another unit, the exterior face of all exterior walls, and the exterior face of the corridor wall enclosing the adjoining unit. 6. Calculation of balcony area is measured as the area bounded by the centre line of demising or partition walls separating one unit from another unit, the outmost face of the enclosing guard and the external face of the adjoining balcony. 7. The units are measured at typical floor in the building. Columns may vary in size depending on the floor level. 8. For each unit type, unit sizes and details might be slightly different. Please refer to the sales and purchase agreement for the actual size of each specific unit.



STUDIO APARTMENT

A  
BLOCK

10-11  
FLOORS

07  
TYPE

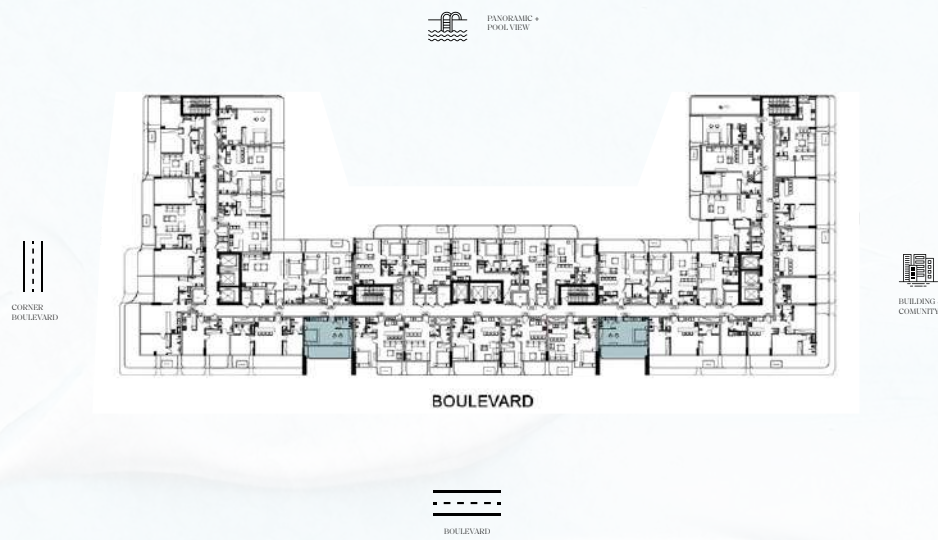
343.90  
AREA sq. ft.  
APT 257.68 + BAL 86.21

VIEW  
BOULEVARD

List of unit numbers with this type, BLOCK A: 1006, 1106.

**Disclaimer:** 1. All room dimensions are measured to structural elements and exclude wall finishes and construction tolerances. 2. All dimensions have been provided by our consultant architects. 3. All materials, dimensions and drawings are approximate. Information is subject to change without notice. 4. Actual suite area may vary from the stated area. Drawings not to scale. The developer reserves the right to make revisions. 5. Calculation of suite area is measured as the area bounded by the centre line of demising or partition walls separating one unit from another unit, the exterior face of all exterior walls, and the exterior face of the corridor wall enclosing the adjoining unit. 6. Calculation of balcony area is measured as the area bounded by the centre line of demising or partition walls separating one unit from another unit, the outmost face of the enclosing guard and the external face of the adjoining balcony. 7. The units are measured at typical floor in the building. Columns may vary in size depending on the floor level. 8. For each unit type, unit sizes and details might be slightly different. Please refer to the sales and purchase agreement for the actual size of each specific unit.





STUDIO APARTMENT

A,C  
BLOCK

04-11  
FLOORS

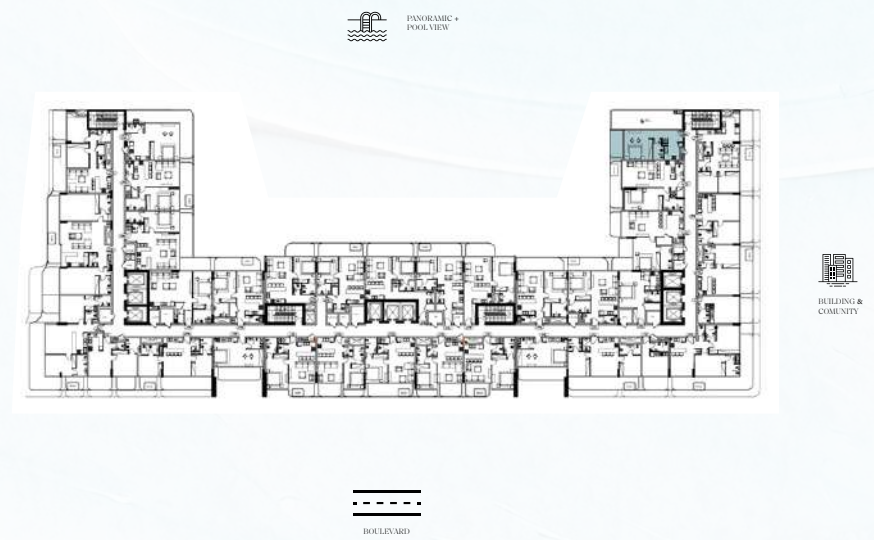
08  
TYPE

547.45  
AREA sq. ft.  
APT 378.35 + BAL 169.10

VIEW  
BOULEVARD

List of unit numbers with this type, BLOCK A: 0404, 0504, 0604, 0704, 0804, 0904, 1004, 1104.  
List of unit numbers with this type, BLOCK C: 0413, 0513, 0613, 0713, 0813, 0913, 1009, 1107.

**Disclaimer:** 1. All room dimensions are measured to structural elements and exclude wall finishes and construction tolerances. 2. All dimensions have been provided by our consultant architects. 3. All materials, dimensions and drawings are approximate. Information is subject to change without notice. 4. Actual suite area may vary from the stated area. Drawings not to scale. The developer reserves the right to make revisions. 5. Calculation of suite area is measured as the area bounded by the centre line of demising or partition walls separating one unit from another unit, the exterior face of all exterior walls, and the exterior face of the corridor wall enclosing the adjoining unit. 6. Calculation of balcony area is measured as the area bounded by the centre line of demising or partition walls separating one unit from another unit, the outmost face of the enclosing guard and the external face of the adjoining balcony. 7. The units are measured at typical floor in the building. Columns may vary in size depending on the floor level. 8. For each unit type, unit sizes and details might be slightly different. Please refer to the sales and purchase agreement for the actual size of each specific unit.



STUDIO APARTMENT

A  
BLOCK

10  
FLOOR

09  
TYPE

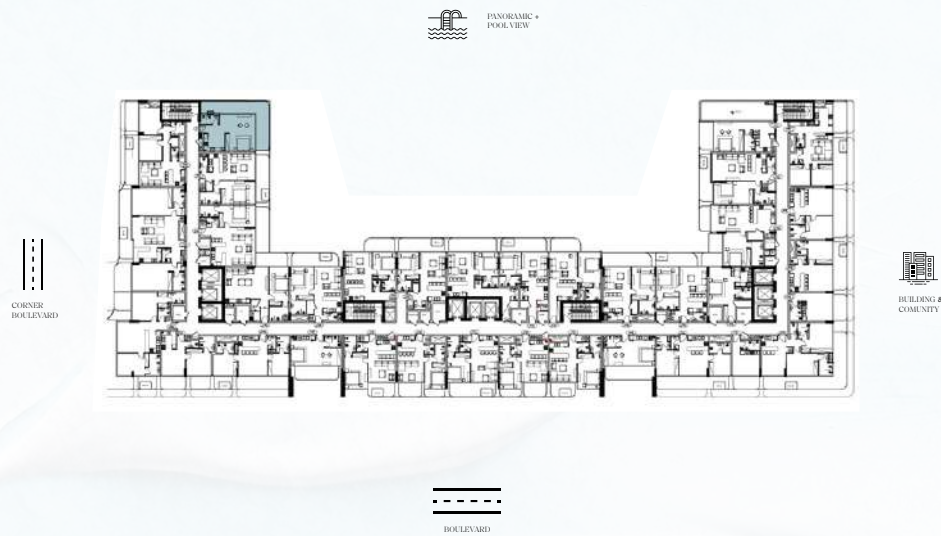
545.94  
AREA sq. ft.  
APT 450.03 + BAL 95.90

VIEW  
BOULEVARD

List of unit numbers with this type, BLOCK A: 1012.

**Disclaimer:** 1. All room dimensions are measured to structural elements and exclude wall finishes and construction tolerances. 2. All dimensions have been provided by our consultant architects. 3. All materials, dimensions and drawings are approximate. Information is subject to change without notice. 4. Actual suite area may vary from the stated area. Drawings not to scale. The developer reserves the right to make revisions. 5. Calculation of suite area is measured as the area bounded by the centre line of demising or partition walls separating one unit from another unit, the exterior face of all exterior walls, and the exterior face of the corridor wall enclosing the adjoining unit. 6. Calculation of balcony area is measured as the area bounded by the centre line of demising or partition walls separating one unit from another unit, the outmost face of the enclosing guard and the external face of the adjoining balcony. 7. The units are measured at typical floor in the building. Columns may vary in size depending on the floor level. 8. For each unit type, unit sizes and details might be slightly different. Please refer to the sales and purchase agreement for the actual size of each specific unit.





STUDIO APARTMENT

C  
BLOCK

10  
FLOOR

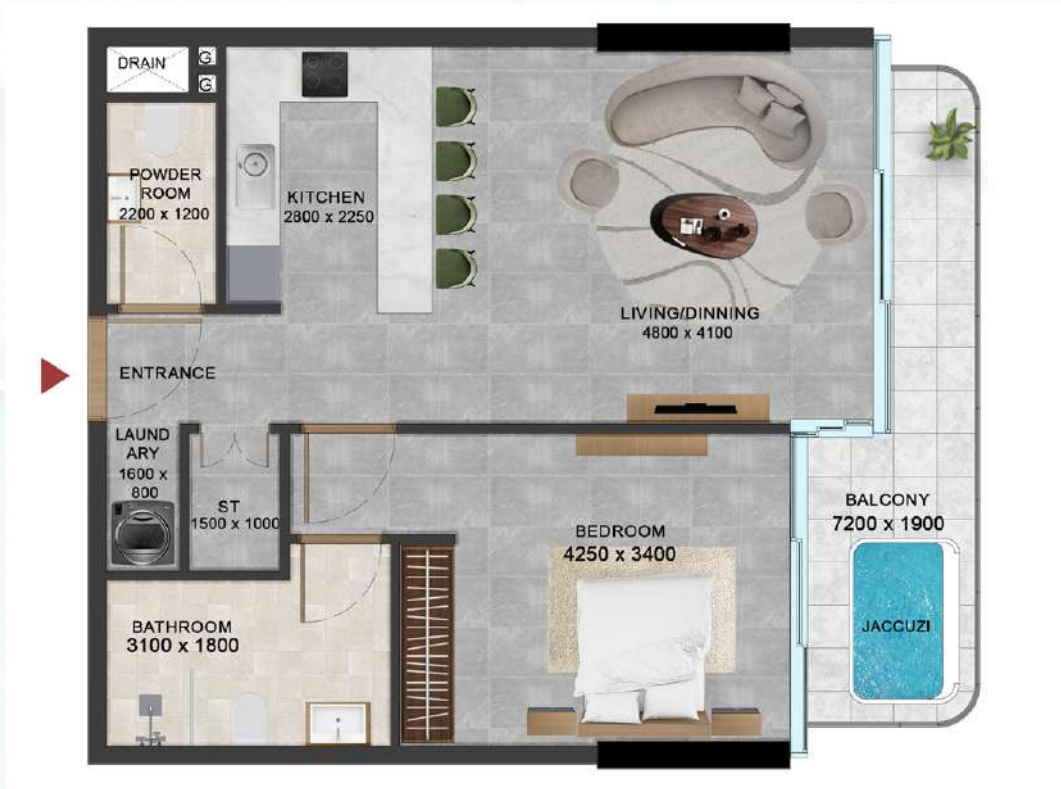
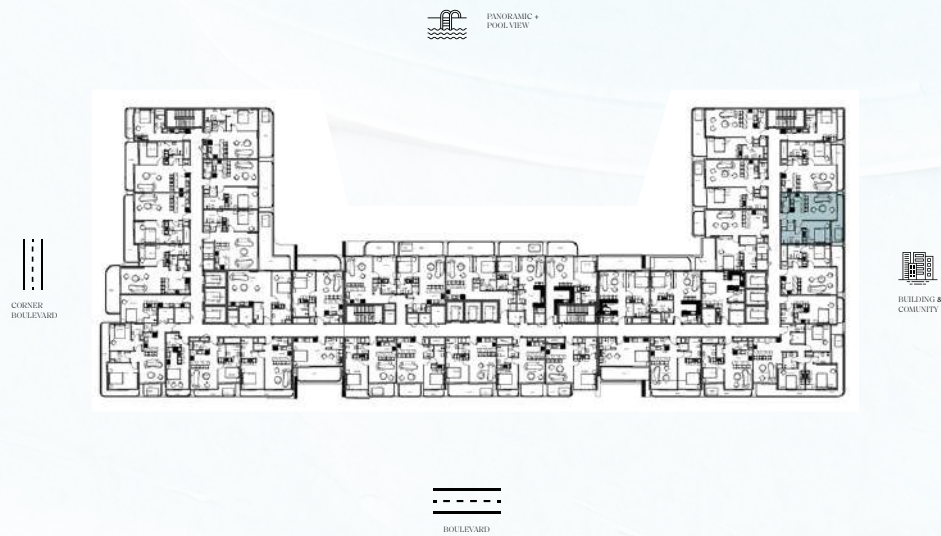
10  
TYPE

837.32  
AREA sq. ft.  
APT 501.81 + BAL 339.38

VIEW  
PANORAMIC+  
POOL VIEW

List of unit numbers with this type, BLOCK C: 1003.

**Disclaimer:** 1. All room dimensions are measured to structural elements and exclude wall finishes and construction tolerances. 2. All dimensions have been provided by our consultant architects. 3. All materials, dimensions and drawings are approximate. Information is subject to change without notice. 4. Actual suite area may vary from the stated area. Drawings not to scale. The developer reserves the right to make revisions. 5. Calculation of suite area is measured as the area bounded by the centre line of demising or partition walls separating one unit from another unit, the exterior face of all exterior walls, and the exterior face of the corridor wall enclosing the adjoining unit. 6. Calculation of balcony area is measured as the area bounded by the centre line of demising or partition walls separating one unit from another unit, the outmost face of the enclosing guard and the external face of the adjoining balcony. 7. The units are measured at typical floor in the building. Columns may vary in size depending on the floor level. 8. For each unit type, unit sizes and details might be slightly different. Please refer to the sales and purchase agreement for the actual size of each specific unit.



1 BEDROOM APARTMENT

A  
BLOCK

01-09  
FLOORS

01.A  
TYPE

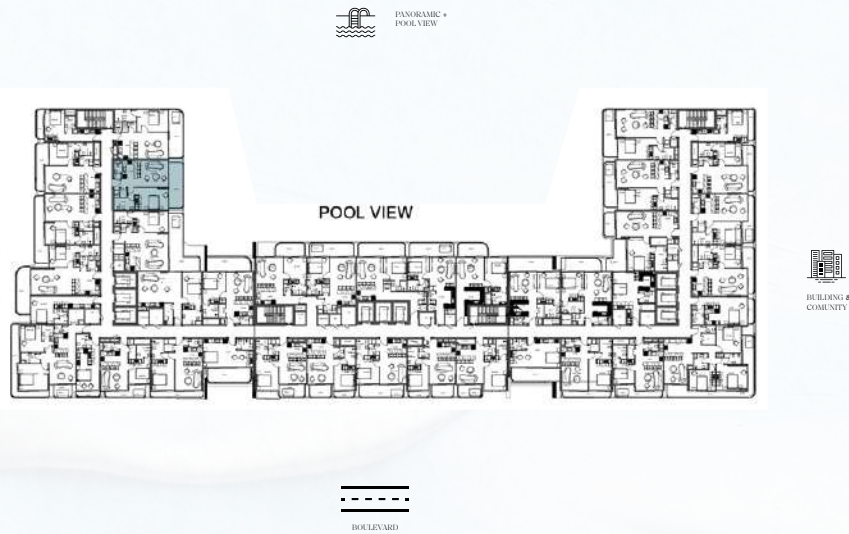
788.56  
AREA sq. ft.  
APT 750.99 + BAL 114.52

VIEW  
BUILDING &  
COMUNITY

BLOCK A with Jacuzzi: 0208, 0308, 0410, 0510, 0610, 0710, 0810, 0910.  
BLOCK A without Jacuzzi: 0107.

**Disclaimer:** 1. All room dimensions are measured to structural elements and exclude wall finishes and construction tolerances. 2. All dimensions have been provided by our consultant architects. 3. All materials, dimensions and drawings are approximate. Information is subject to change without notice. 4. Actual suite area may vary from the stated area. Drawings not to scale. The developer reserves the right to make revisions. 5. Calculation of suite area is measured as the area bounded by the centre line of demising or partition walls separating one unit from another unit, the exterior face of all exterior walls, and the exterior face of the corridor wall enclosing the adjoining unit. 6. Calculation of balcony area is measured as the area bounded by the centre line of demising or partition walls separating one unit from another unit, the outmost face of the enclosing guard and the external face of the adjoining balcony. 7. The units are measured at typical floor in the building. Columns may vary in size depending on the floor level. 8. For each unit type, unit sizes and details might be slightly different. Please refer to the sales and purchase agreement for the actual size of each specific unit.





1 BEDROOM APARTMENT

C  
BLOCK

01-10  
FLOORS

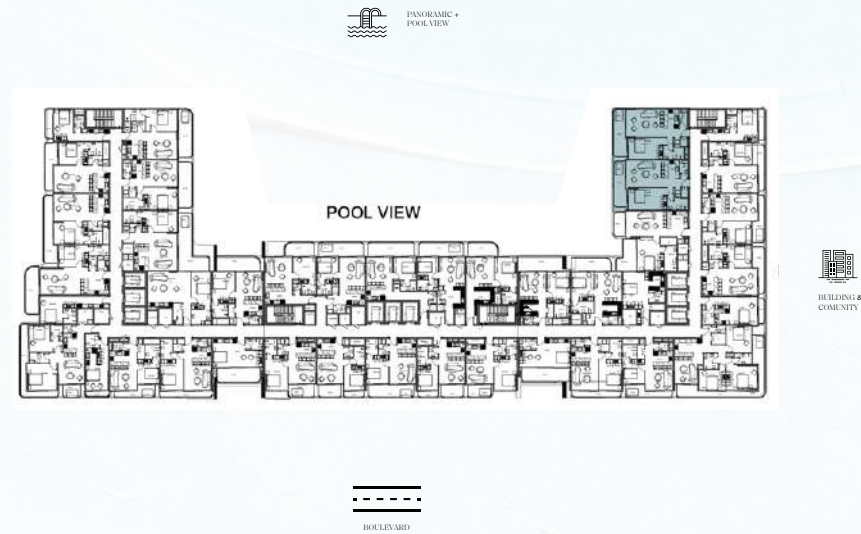
01.B  
TYPE

841.19  
AREA sq. ft.  
APT 683.07 + BAL 158.12

VIEW  
PANORAMIC+  
POOL VIEW

BLOCK C with Jacuzzi: 1002.  
BLOCK C without Jacuzzi: 0102, 0202, 0302, 0402, 0502, 0602, 0702, 0802, 0902.

**Disclaimer:** 1. All room dimensions are measured to structural elements and exclude wall finishes and construction tolerances. 2. All dimensions have been provided by our consultant architects. 3. All materials, dimensions and drawings are approximate. Information is subject to change without notice. 4. Actual suite area may vary from the stated area. Drawings not to scale. The developer reserves the right to make revisions. 5. Calculation of suite area is measured as the area bounded by the centre line of demising or partition walls separating one unit from another unit, the exterior face of all exterior walls, and the exterior face of the corridor wall enclosing the adjoining unit. 6. Calculation of balcony area is measured as the area bounded by the centre line of demising or partition walls separating one unit from another unit, the outmost face of the enclosing guard and the external face of the adjoining balcony. 7. The units are measured at typical floor in the building. Columns may vary in size depending on the floor level. 8. For each unit type, unit sizes and details might be slightly different. Please refer to the sales and purchase agreement for the actual size of each specific unit.



1 BEDROOM APARTMENT

A  
BLOCK

01-09  
FLOORS

01  
TYPE

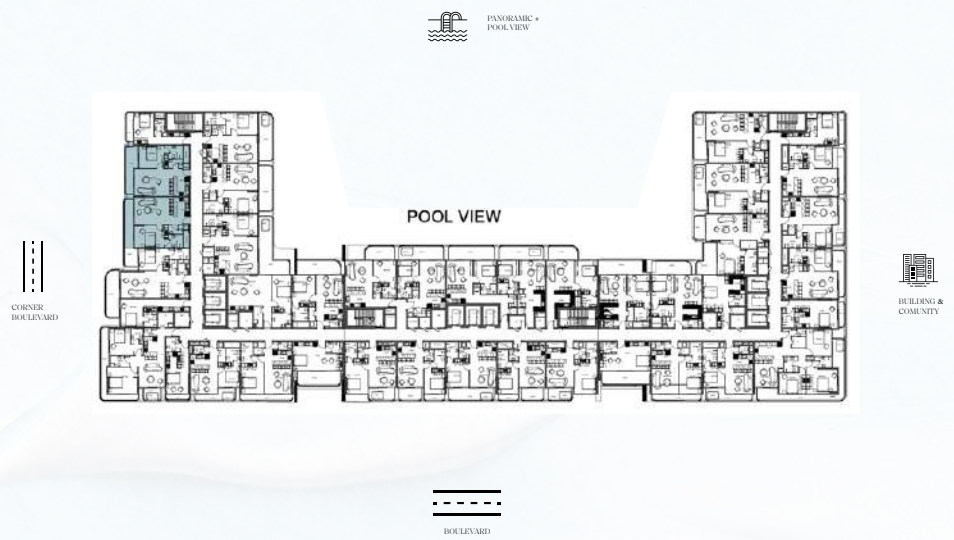
900.07  
AREA sq. ft.  
APT 750.99 + BAL 149.08

VIEW  
PANORAMIC+  
POOL VIEW

BLOCK A with Jacuzzi: 0211, 0212, 0311, 0312, 0413, 0414, 0513, 0514, 0613, 0614, 0713, 0714, 0813, 0814, 0913, 0914.  
BLOCK A without Jacuzzi: 0110, 0111.

**Disclaimer:** 1. All room dimensions are measured to structural elements and exclude wall finishes and construction tolerances. 2. All dimensions have been provided by our consultant architects. 3. All materials, dimensions and drawings are approximate. Information is subject to change without notice. 4. Actual suite area may vary from the stated area. Drawings not to scale. The developer reserves the right to make revisions. 5. Calculation of suite area is measured as the area bounded by the centre line of demising or partition walls separating one unit from another unit, the exterior face of all exterior walls, and the exterior face of the corridor wall enclosing the adjoining unit. 6. Calculation of balcony area is measured as the area bounded by the centre line of demising or partition walls separating one unit from another unit, the outmost face of the enclosing guard and the external face of the adjoining balcony. 7. The units are measured at typical floor in the building. Columns may vary in size depending on the floor level. 8. For each unit type, unit sizes and details might be slightly different. Please refer to the sales and purchase agreement for the actual size of each specific unit.





1 BEDROOM APARTMENT

C  
BLOCK

01-09  
FLOORS

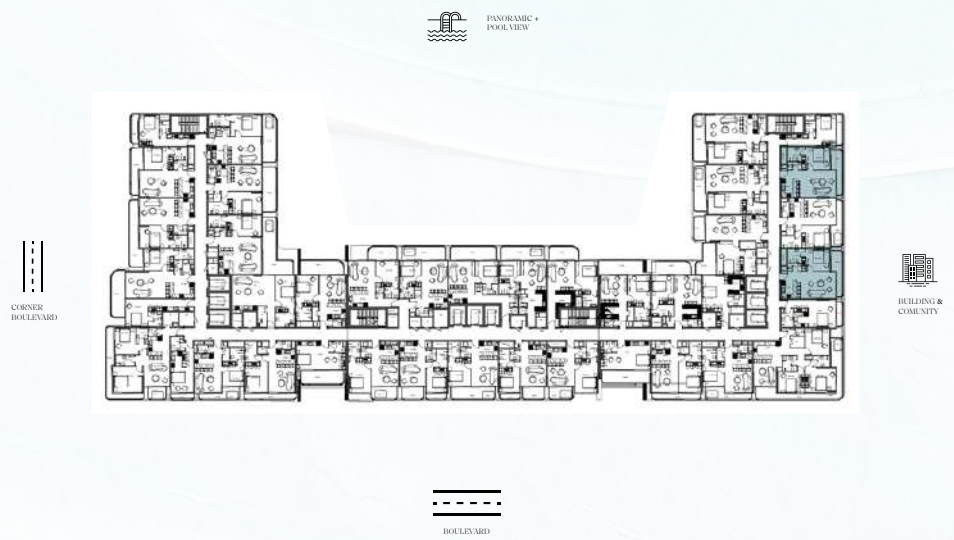
02.A  
TYPE

776.72  
AREA sq. ft.  
APT 637.56 + BAL 119.15

VIEW  
CORNER  
BOULEVARD

BLOCK C with Jacuzzi: 0205, 0206, 0305, 0306, 0405, 0406.  
BLOCK C without Jacuzzi: 0105, 0106, 0505, 0506, 0605, 0606, 0705, 0706, 0805, 0806, 0905, 0906.

**Disclaimer:** 1. All room dimensions are measured to structural elements and exclude wall finishes and construction tolerances. 2. All dimensions have been provided by our consultant architects. 3. All materials, dimensions and drawings are approximate. Information is subject to change without notice. 4. Actual suite area may vary from the stated area. Drawings not to scale. The developer reserves the right to make revisions. 5. Calculation of suite area is measured as the area bounded by the centre line of demising or partition walls separating one unit from another unit, the exterior face of all exterior walls, and the exterior face of the corridor wall enclosing the adjoining unit. 6. Calculation of balcony area is measured as the area bounded by the centre line of demising or partition walls separating one unit from another unit, the outmost face of the enclosing guard and the external face of the adjoining balcony. 7. The units are measured at typical floor in the building. Columns may vary in size depending on the floor level. 8. For each unit type, unit sizes and details might be slightly different. Please refer to the sales and purchase agreement for the actual size of each specific unit.



1 BEDROOM APARTMENT

A  
BLOCK

01-09  
FLOORS

02  
TYPE

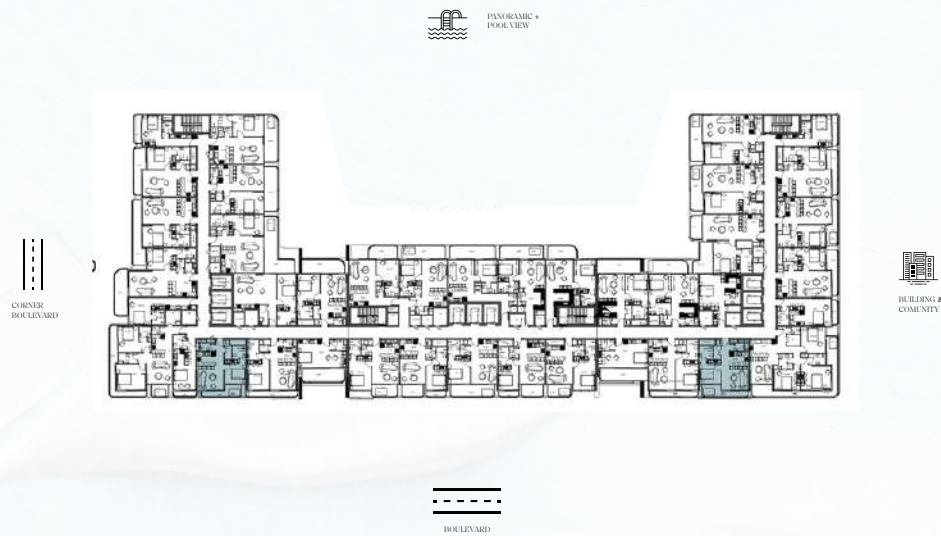
765.63  
AREA sq. ft.  
APT 654.33 + BAL 111.29

VIEW  
BUILDING &  
COMUNITY

List of unit numbers with this type, BLOCK A: 0106, 0108, 0207, 0209, 0307, 0309, 0409, 0411, 0509, 0511, 0609, 0611, 0709, 0711, 0809, 0811, 0909, 0911.

**Disclaimer:** 1. All room dimensions are measured to structural elements and exclude wall finishes and construction tolerances. 2. All dimensions have been provided by our consultant architects. 3. All materials, dimensions and drawings are approximate. Information is subject to change without notice. 4. Actual suite area may vary from the stated area. Drawings not to scale. The developer reserves the right to make revisions. 5. Calculation of suite area is measured as the area bounded by the centre line of demising or partition walls separating one unit from another unit, the exterior face of all exterior walls, and the exterior face of the corridor wall enclosing the adjoining unit. 6. Calculation of balcony area is measured as the area bounded by the centre line of demising or partition walls separating one unit from another unit, the outmost face of the enclosing guard and the external face of the adjoining balcony. 7. The units are measured at typical floor in the building. Columns may vary in size depending on the floor level. 8. For each unit type, unit sizes and details might be slightly different. Please refer to the sales and purchase agreement for the actual size of each specific unit.





1 BEDROOM APARTMENT

A,C  
BLOCKS

01-09  
FLOORS

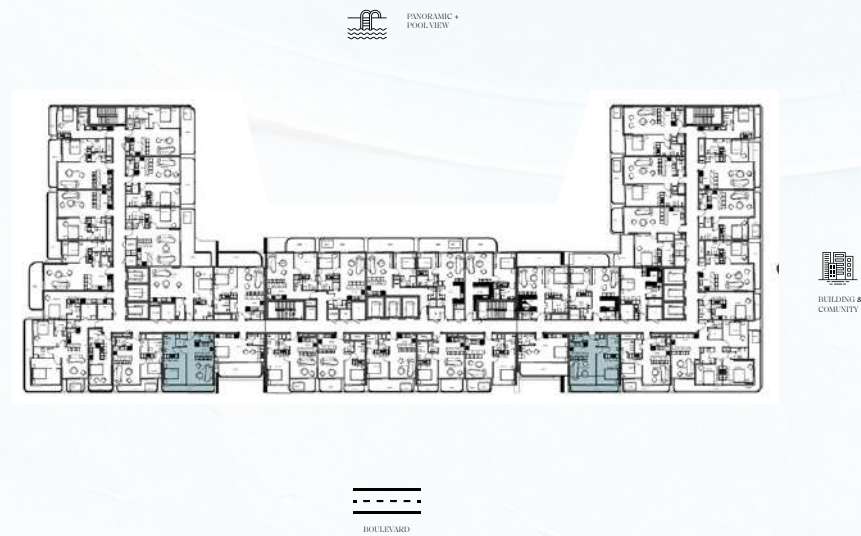
03  
TYPE

692.01  
AREA sq. ft.  
APT 576.73 + BAL 115.28

VIEW  
BOULEVARD

BLOCK A with Jacuzzi: 0506, 0606, 0806, 0906, 1106, 1206.  
BLOCK A without Jacuzzi: 0406, 0706, 1006.  
BLOCK C with Jacuzzi: 0511, 0611, 0811, 0911, 1111, 1211.  
BLOCK C without Jacuzzi: 0411, 0711, 1011.

**Disclaimer:** 1. All room dimensions are measured to structural elements and exclude wall finishes and construction tolerances. 2. All dimensions have been provided by our consultant architects. 3. All materials, dimensions and drawings are approximate. Information is subject to change without notice. 4. Actual suite area may vary from the stated area. Drawings not to scale. The developer reserves the right to make revisions. 5. Calculation of suite area is measured as the area bounded by the centre line of demising or partition walls separating one unit from another unit, the exterior face of all exterior walls, and the exterior face of the corridor wall enclosing the adjoining unit. 6. Calculation of balcony area is measured as the area bounded by the centre line of demising or partition walls separating one unit from another unit, the outmost face of the enclosing guard and the external face of the adjoining balcony. 7. The units are measured at typical floor in the building. Columns may vary in size depending on the floor level. 8. For each unit type, unit sizes and details might be slightly different. Please refer to the sales and purchase agreement for the actual size of each specific unit.



1 BEDROOM APARTMENT

A,C  
BLOCKS

01-09  
FLOORS

04  
TYPE

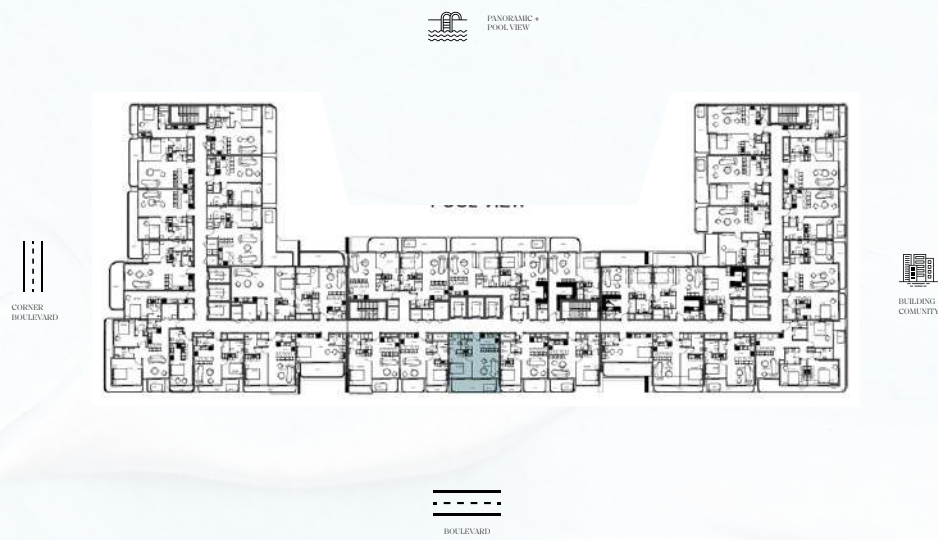
743.89  
AREA sq. ft.  
APT 657.35 + BAL 86.54

VIEW  
BOULEVARD

List of unit numbers with this type, BLOCK A: 0102, 0203, 0303, 0405, 0505, 0605, 0705, 0805, 0905.  
BLOCK C: 0112, 0212, 0312, 0412, 0512, 0612, 0712, 0812, 0912.

**Disclaimer:** 1. All room dimensions are measured to structural elements and exclude wall finishes and construction tolerances. 2. All dimensions have been provided by our consultant architects. 3. All materials, dimensions and drawings are approximate. Information is subject to change without notice. 4. Actual suite area may vary from the stated area. Drawings not to scale. The developer reserves the right to make revisions. 5. Calculation of suite area is measured as the area bounded by the centre line of demising or partition walls separating one unit from another unit, the exterior face of all exterior walls, and the exterior face of the corridor wall enclosing the adjoining unit. 6. Calculation of balcony area is measured as the area bounded by the centre line of demising or partition walls separating one unit from another unit, the outmost face of the enclosing guard and the external face of the adjoining balcony. 7. The units are measured at typical floor in the building. Columns may vary in size depending on the floor level. 8. For each unit type, unit sizes and details might be slightly different. Please refer to the sales and purchase agreement for the actual size of each specific unit.





1 BEDROOM APARTMENT

B  
BLOCK

01-15  
FLOORS

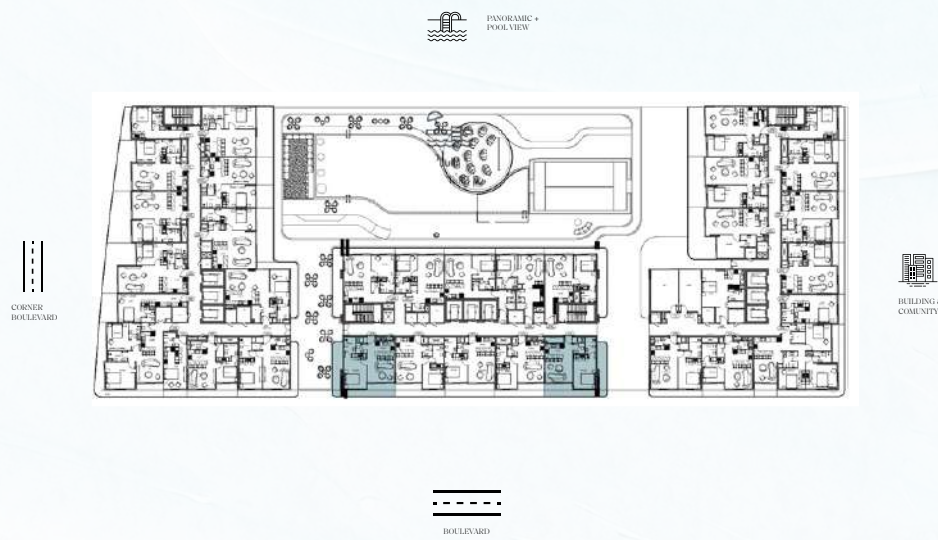
05.A  
TYPE

734.95  
AREA sq. ft.  
APT 581.25 + BAL 153.70

VIEW  
BOULEVARD

BLOCK B with Jacuzzi: 0205, 0305, 0405, 505, 0605, 0705, 0805, 0905, 1005, 1105, 1305, 1405, 1505.  
BLOCK B without Jacuzzi: 0105, 1205.

**Disclaimer:** 1. All room dimensions are measured to structural elements and exclude wall finishes and construction tolerances. 2. All dimensions have been provided by our consultant architects. 3. All materials, dimensions and drawings are approximate. Information is subject to change without notice. 4. Actual suite area may vary from the stated area. Drawings not to scale. The developer reserves the right to make revisions. 5. Calculation of suite area is measured as the area bounded by the centre line of demising or partition walls separating one unit from another unit, the exterior face of all exterior walls, and the exterior face of the corridor wall enclosing the adjoining unit. 6. Calculation of balcony area is measured as the area bounded by the centre line of demising or partition walls separating one unit from another unit, the outmost face of the enclosing guard and the external face of the adjoining balcony. 7. The units are measured at typical floor in the building. Columns may vary in size depending on the floor level. 8. For each unit type, unit sizes and details might be slightly different. Please refer to the sales and purchase agreement for the actual size of each specific unit.



1 BEDROOM APARTMENT

B  
BLOCK

01  
FLOOR

06 - LVL1  
TYPE

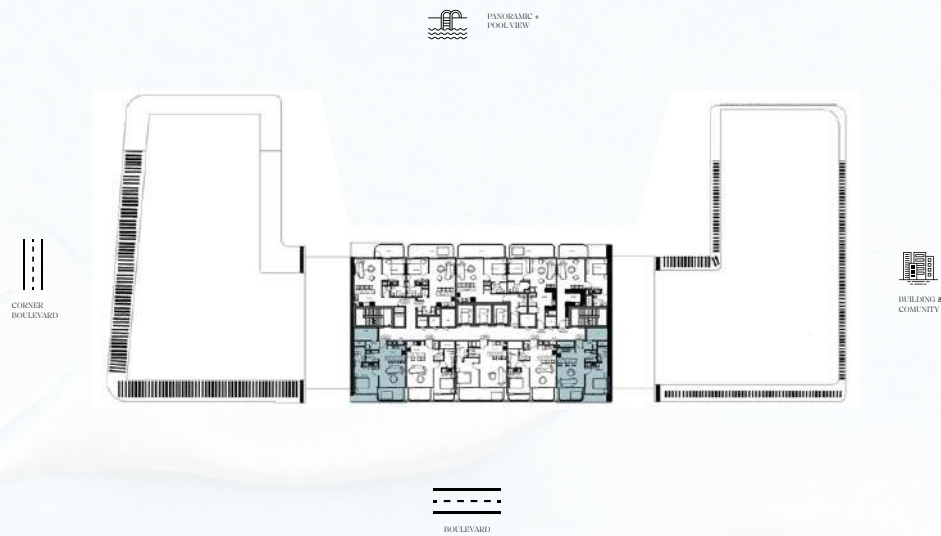
885.43  
AREA sq. ft.  
APT 603.85 + BAL 284.81

VIEW  
BOULEVARD

List of unit numbers with this type, BLOCK B: 0103, 0107.

**Disclaimer:** 1. All room dimensions are measured to structural elements and exclude wall finishes and construction tolerances. 2. All dimensions have been provided by our consultant architects. 3. All materials, dimensions and drawings are approximate. Information is subject to change without notice. 4. Actual suite area may vary from the stated area. Drawings not to scale. The developer reserves the right to make revisions. 5. Calculation of suite area is measured as the area bounded by the centre line of demising or partition walls separating one unit from another unit, the exterior face of all exterior walls, and the exterior face of the corridor wall enclosing the adjoining unit. 6. Calculation of balcony area is measured as the area bounded by the centre line of demising or partition walls separating one unit from another unit, the outmost face of the enclosing guard and the external face of the adjoining balcony. 7. The units are measured at typical floor in the building. Columns may vary in size depending on the floor level. 8. For each unit type, unit sizes and details might be slightly different. Please refer to the sales and purchase agreement for the actual size of each specific unit.





1 BEDROOM APARTMENT

B  
BLOCK

12-15  
FLOORS

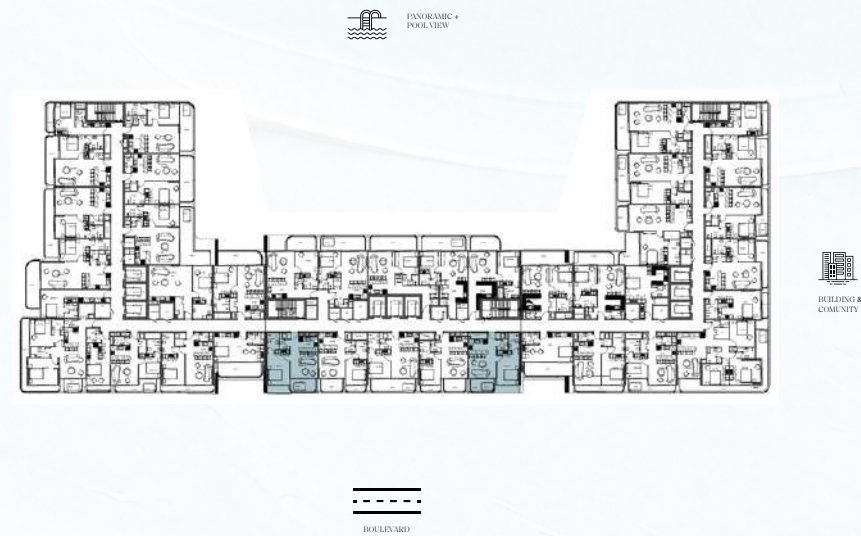
06-LVL14  
TYPE

776.18  
AREA sq. ft.  
APT 688.02 + BAL 88.15

VIEW  
BOULEVARD/  
BUILDING &  
COMUNITY

BLOCK B with Jacuzzi: 1303, 1307, 1403, 1407, 1503, 1507.  
BLOCK B without Jacuzzi: 1203, 1207.

**Disclaimer:** 1. All room dimensions are measured to structural elements and exclude wall finishes and construction tolerances. 2. All dimensions have been provided by our consultant architects. 3. All materials, dimensions and drawings are approximate. Information is subject to change without notice. 4. Actual suite area may vary from the stated area. Drawings not to scale. The developer reserves the right to make revisions. 5. Calculation of suite area is measured as the area bounded by the centre line of demising or partition walls separating one unit from another unit, the exterior face of all exterior walls, and the exterior face of the corridor wall enclosing the adjoining unit. 6. Calculation of balcony area is measured as the area bounded by the centre line of demising or partition walls separating one unit from another unit, the outmost face of the enclosing guard and the external face of the adjoining balcony. 7. The units are measured at typical floor in the building. Columns may vary in size depending on the floor level. 8. For each unit type, unit sizes and details might be slightly different. Please refer to the sales and purchase agreement for the actual size of each specific unit.



1 BEDROOM APARTMENT

B  
BLOCK

02-11  
FLOORS

06  
TYPE

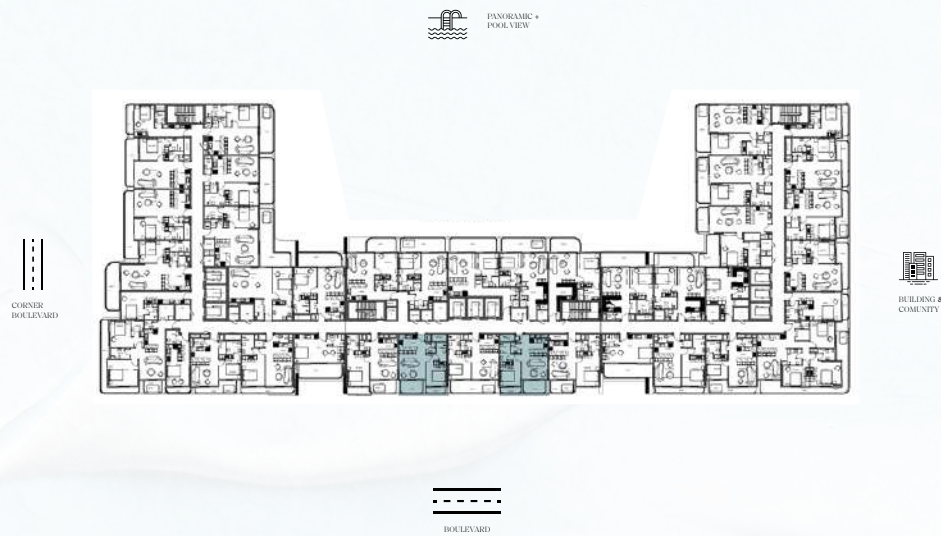
767.57  
AREA sq. ft.  
APT 653.04 + BAL 114.52

VIEW  
BOULEVARD

List of unit numbers with this type, BLOCK B: 0203 ,0207, 0303, 0307, 0403, 0407, 0503, 0507, 0603, 0607, 0703, 0707, 0803, 0807, 0903, 0907, 1003, 1007, 1103, 1107.

**Disclaimer:** 1. All room dimensions are measured to structural elements and exclude wall finishes and construction tolerances. 2. All dimensions have been provided by our consultant architects. 3. All materials, dimensions and drawings are approximate. Information is subject to change without notice. 4. Actual suite area may vary from the stated area. Drawings not to scale. The developer reserves the right to make revisions. 5. Calculation of suite area is measured as the area bounded by the centre line of demising or partition walls separating one unit from another unit, the exterior face of all exterior walls, and the exterior face of the corridor wall enclosing the adjoining unit. 6. Calculation of balcony area is measured as the area bounded by the centre line of demising or partition walls separating one unit from another unit, the outmost face of the enclosing guard and the external face of the adjoining balcony. 7. The units are measured at typical floor in the building. Columns may vary in size depending on the floor level. 8. For each unit type, unit sizes and details might be slightly different. Please refer to the sales and purchase agreement for the actual size of each specific unit.





1 BEDROOM APARTMENT

B  
BLOCK

01-15  
FLOORS

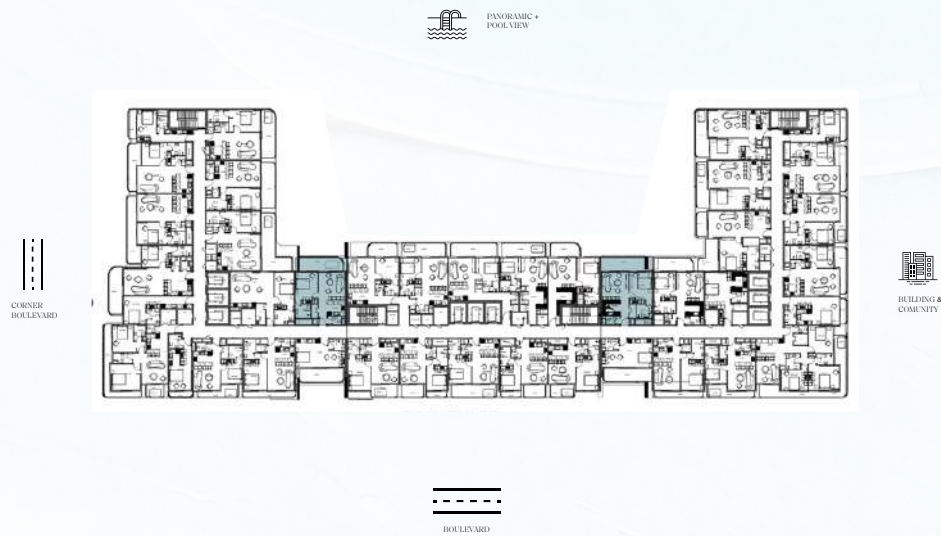
07  
TYPE

674.03  
AREA sq. ft.  
APT 562.09 + BAL 112.26

VIEW  
BOULEVARD

List of unit numbers with this type, BLOCK B: 0104, 0106, 0204, 0206, 0304, 0306, 0404, 0406, 0504, 0506, 0604, 0606, 0704, 0706, 0804, 0806, 0904, 0906, 1004, 1006, 1104, 1106, 1204, 1206, 1404, 1406, 1504, 1506.

**Disclaimer:** 1. All room dimensions are measured to structural elements and exclude wall finishes and construction tolerances. 2. All dimensions have been provided by our consultant architects. 3. All materials, dimensions and drawings are approximate. Information is subject to change without notice. 4. Actual suite area may vary from the stated area. Drawings not to scale. The developer reserves the right to make revisions. 5. Calculation of suite area is measured as the area bounded by the centre line of demising or partition walls separating one unit from another unit, the exterior face of all exterior walls, and the exterior face of the corridor wall enclosing the adjoining unit. 6. Calculation of balcony area is measured as the area bounded by the centre line of demising or partition walls separating one unit from another unit, the outmost face of the enclosing guard and the external face of the adjoining balcony. 7. The units are measured at typical floor in the building. Columns may vary in size depending on the floor level. 8. For each unit type, unit sizes and details might be slightly different. Please refer to the sales and purchase agreement for the actual size of each specific unit.



1 BEDROOM APARTMENT

A,C  
BLOCKS

04-11  
FLOORS

8  
TYPE

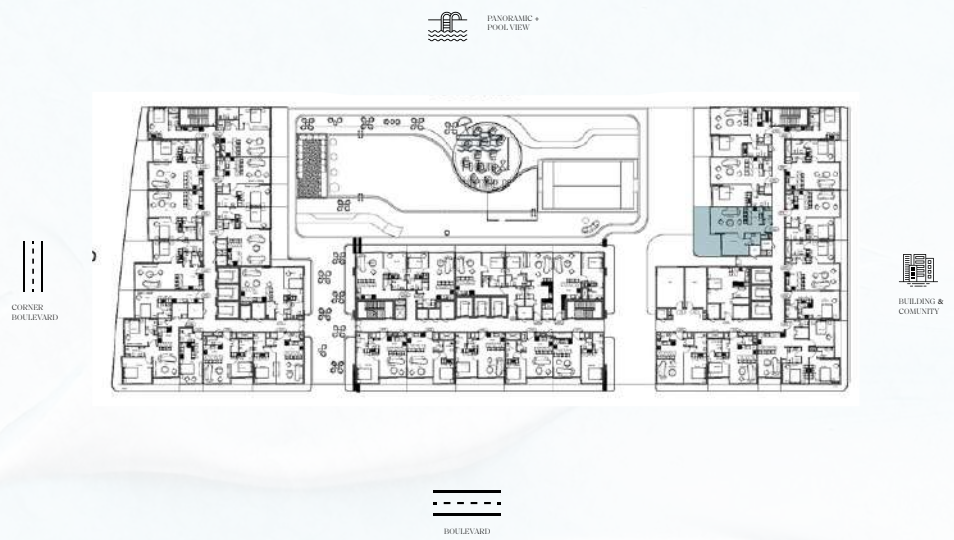
814.61  
AREA sq. ft.  
APT 651.97 + BAL 162.64

VIEW  
PANORAMIC+  
POOL VIEW

BLOCK A with Jacuzzi: 1103.  
BLOCK A without Jacuzzi: 0403, 0503, 0603, 0703, 0803, 0903, 1003.  
BLOCK C with Jacuzzi: 0414, 1010, 1108.  
BLOCK C without Jacuzzi: 0514, 0614, 0714, 0814, 0914.

**Disclaimer:** 1. All room dimensions are measured to structural elements and exclude wall finishes and construction tolerances. 2. All dimensions have been provided by our consultant architects. 3. All materials, dimensions and drawings are approximate. Information is subject to change without notice. 4. Actual suite area may vary from the stated area. Drawings not to scale. The developer reserves the right to make revisions. 5. Calculation of suite area is measured as the area bounded by the centre line of demising or partition walls separating one unit from another unit, the exterior face of all exterior walls, and the exterior face of the corridor wall enclosing the adjoining unit. 6. Calculation of balcony area is measured as the area bounded by the centre line of demising or partition walls separating one unit from another unit, the outmost face of the enclosing guard and the external face of the adjoining balcony. 7. The units are measured at typical floor in the building. Columns may vary in size depending on the floor level. 8. For each unit type, unit sizes and details might be slightly different. Please refer to the sales and purchase agreement for the actual size of each specific unit.



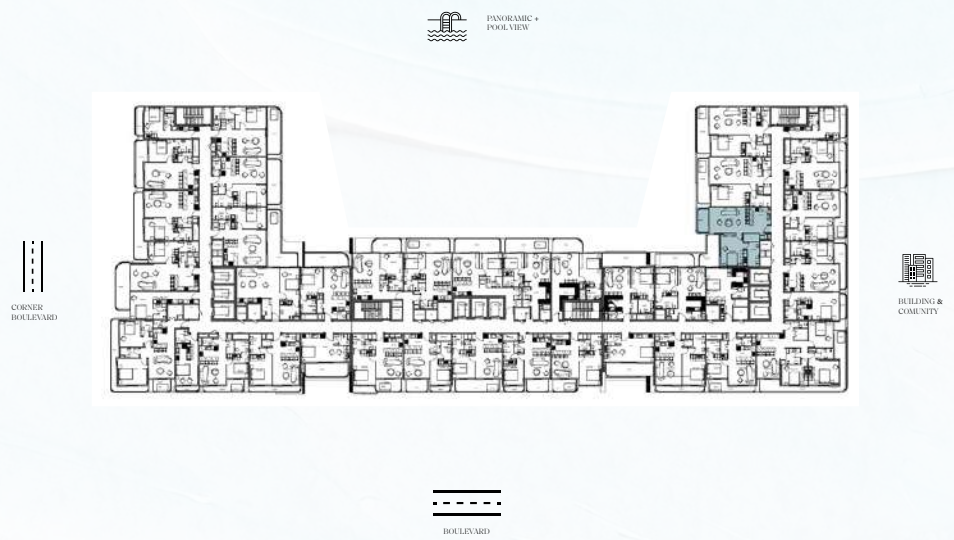


1 BEDROOM APARTMENT

A BLOCK	01 FLOOR	09 - LVL1 TYPE	909.65 AREA sq. ft. APT 633.02 + BAL 276.63	VIEW PANORAMIC+ POOL VIEW
------------	-------------	-------------------	---	---------------------------------

List of unit numbers with this type, BLOCK B: 0112.

**Disclaimer:** 1. All room dimensions are measured to structural elements and exclude wall finishes and construction tolerances. 2. All dimensions have been provided by our consultant architects. 3. All materials, dimensions and drawings are approximate. Information is subject to change without notice. 4. Actual suite area may vary from the stated area. Drawings not to scale. The developer reserves the right to make revisions. 5. Calculation of suite area is measured as the area bounded by the centre line of demising or partition walls separating one unit from another unit, the exterior face of all exterior walls, and the exterior face of the corridor wall enclosing the adjoining unit. 6. Calculation of balcony area is measured as the area bounded by the centre line of demising or partition walls separating one unit from another unit, the outmost face of the enclosing guard and the external face of the adjoining balcony. 7. The units are measured at typical floor in the building. Columns may vary in size depending on the floor level. 8. For each unit type, unit sizes and details might be slightly different. Please refer to the sales and purchase agreement for the actual size of each specific unit.



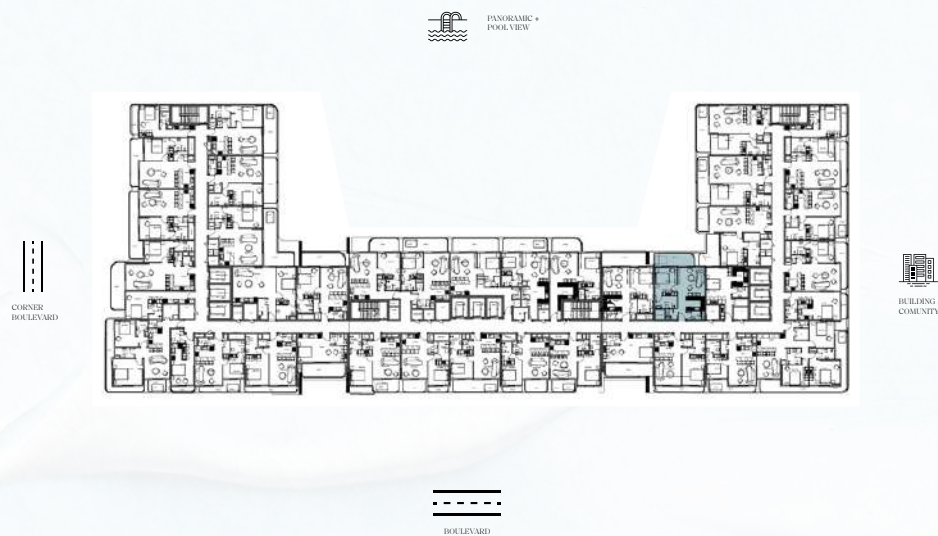
1 BEDROOM APARTMENT

A BLOCK	02-11 FLOORS	09 TYPE	908.79 AREA sq. ft. APT 774.35 + BAL 134.44	VIEW PANORAMIC+ POOL VIEW
------------	-----------------	------------	---	---------------------------------

List of unit numbers with this type, BLOCK A: 0213, 0313, 0415, 0515, 0615, 0715, 0815, 0915, 1014, 1112.

**Disclaimer:** 1. All room dimensions are measured to structural elements and exclude wall finishes and construction tolerances. 2. All dimensions have been provided by our consultant architects. 3. All materials, dimensions and drawings are approximate. Information is subject to change without notice. 4. Actual suite area may vary from the stated area. Drawings not to scale. The developer reserves the right to make revisions. 5. Calculation of suite area is measured as the area bounded by the centre line of demising or partition walls separating one unit from another unit, the exterior face of all exterior walls, and the exterior face of the corridor wall enclosing the adjoining unit. 6. Calculation of balcony area is measured as the area bounded by the centre line of demising or partition walls separating one unit from another unit, the outmost face of the enclosing guard and the external face of the adjoining balcony. 7. The units are measured at typical floor in the building. Columns may vary in size depending on the floor level. 8. For each unit type, unit sizes and details might be slightly different. Please refer to the sales and purchase agreement for the actual size of each specific unit.





1 BEDROOM APARTMENT

A  
BLOCK

02-11  
FLOORS

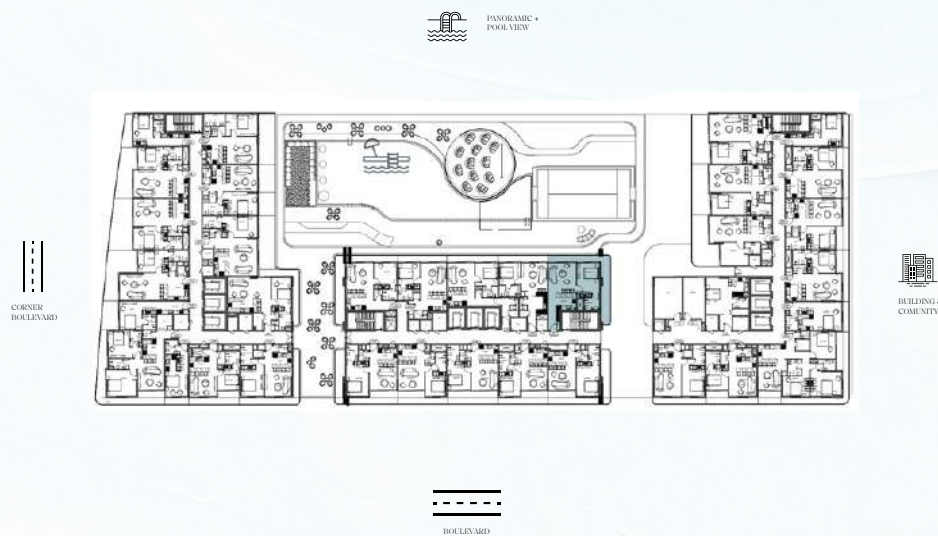
10  
TYPE

751.64  
AREA sq. ft.  
APT 657.35 + BAL 94.29

VIEW  
PANORAMIC+  
POOL VIEW

BLOCK A with Jacuzzi: 0202, 0203, 1002.  
BLOCK A without Jacuzzi: 0402, 0502, 0602, 0702, 0802, 0902, 1102.

**Disclaimer:** 1. All room dimensions are measured to structural elements and exclude wall finishes and construction tolerances. 2. All dimensions have been provided by our consultant architects. 3. All materials, dimensions and drawings are approximate. Information is subject to change without notice. 4. Actual suite area may vary from the stated area. Drawings not to scale. The developer reserves the right to make revisions. 5. Calculation of suite area is measured as the area bounded by the centre line of demising or partition walls separating one unit from another unit, the exterior face of all exterior walls, and the exterior face of the corridor wall enclosing the adjoining unit. 6. Calculation of balcony area is measured as the area bounded by the centre line of demising or partition walls separating one unit from another unit, the outmost face of the enclosing guard and the external face of the adjoining balcony. 7. The units are measured at typical floor in the building. Columns may vary in size depending on the floor level. 8. For each unit type, unit sizes and details might be slightly different. Please refer to the sales and purchase agreement for the actual size of each specific unit.



1 BEDROOM APARTMENT

B  
BLOCK

01  
FLOOR

11 - LVL1  
TYPE

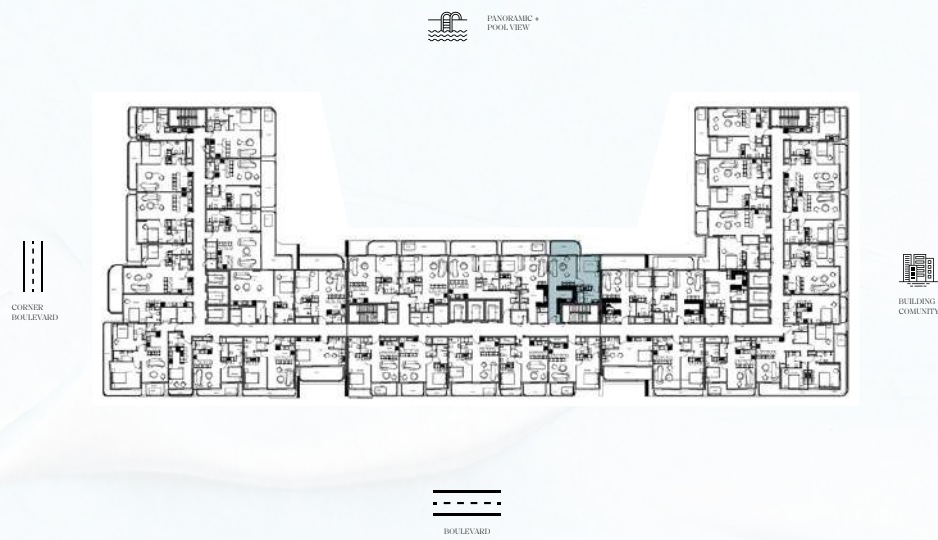
937.21  
AREA sq. ft.  
APT 656.92 + BAL 280.29

VIEW  
PANORAMIC+  
POOL VIEW

List of unit numbers with this type, BLOCK B: 0108.

**Disclaimer:** 1. All room dimensions are measured to structural elements and exclude wall finishes and construction tolerances. 2. All dimensions have been provided by our consultant architects. 3. All materials, dimensions and drawings are approximate. Information is subject to change without notice. 4. Actual suite area may vary from the stated area. Drawings not to scale. The developer reserves the right to make revisions. 5. Calculation of suite area is measured as the area bounded by the centre line of demising or partition walls separating one unit from another unit, the exterior face of all exterior walls, and the exterior face of the corridor wall enclosing the adjoining unit. 6. Calculation of balcony area is measured as the area bounded by the centre line of demising or partition walls separating one unit from another unit, the outmost face of the enclosing guard and the external face of the adjoining balcony. 7. The units are measured at typical floor in the building. Columns may vary in size depending on the floor level. 8. For each unit type, unit sizes and details might be slightly different. Please refer to the sales and purchase agreement for the actual size of each specific unit.





1 BEDROOM APARTMENT

B  
BLOCK

02-17  
FLOORS

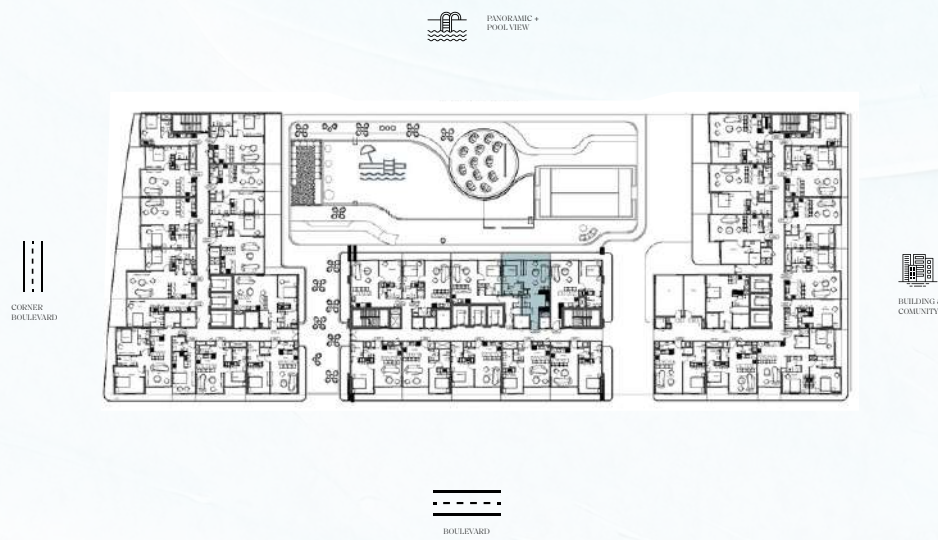
11  
TYPE

764.02  
AREA sq. ft.  
APT 665.85 + BAL 98.16

VIEW  
PANORAMIC+  
POOL VIEW

List of unit numbers with this type, BLOCK B: 0208, 0308, 0408, 0508, 0608, 0708, 0808, 0908, 1008, 1108, 1208, 1308, 1408, 1508, 1605, 1705.

**Disclaimer:** 1. All room dimensions are measured to structural elements and exclude wall finishes and construction tolerances. 2. All dimensions have been provided by our consultant architects. 3. All materials, dimensions and drawings are approximate. Information is subject to change without notice. 4. Actual suite area may vary from the stated area. Drawings not to scale. The developer reserves the right to make revisions. 5. Calculation of suite area is measured as the area bounded by the centre line of demising or partition walls separating one unit from another unit, the exterior face of all exterior walls, and the exterior face of the corridor wall enclosing the adjoining unit. 6. Calculation of balcony area is measured as the area bounded by the centre line of demising or partition walls separating one unit from another unit, the outmost face of the enclosing guard and the external face of the adjoining balcony. 7. The units are measured at typical floor in the building. Columns may vary in size depending on the floor level. 8. For each unit type, unit sizes and details might be slightly different. Please refer to the sales and purchase agreement for the actual size of each specific unit.



1 BEDROOM APARTMENT

B  
BLOCK

01  
FLOOR

12 - LVL 1  
TYPE

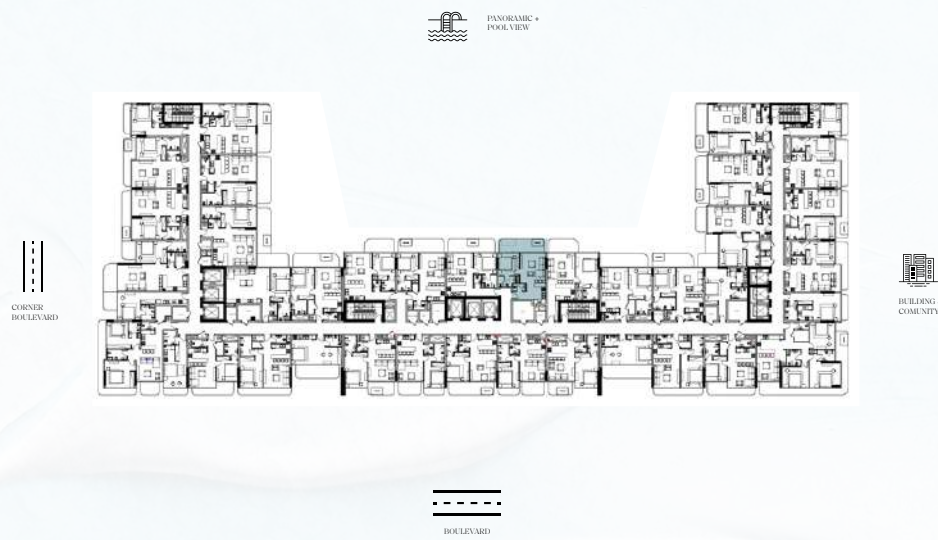
666.39  
AREA sq. ft.  
APT 579.52 + BAL 86.86

VIEW  
PANORAMIC+  
POOL VIEW

List of unit numbers with this type, BLOCK B: 0109.

**Disclaimer:** 1. All room dimensions are measured to structural elements and exclude wall finishes and construction tolerances. 2. All dimensions have been provided by our consultant architects. 3. All materials, dimensions and drawings are approximate. Information is subject to change without notice. 4. Actual suite area may vary from the stated area. Drawings not to scale. The developer reserves the right to make revisions. 5. Calculation of suite area is measured as the area bounded by the centre line of demising or partition walls separating one unit from another unit, the exterior face of all exterior walls, and the exterior face of the corridor wall enclosing the adjoining unit. 6. Calculation of balcony area is measured as the area bounded by the centre line of demising or partition walls separating one unit from another unit, the outmost face of the enclosing guard and the external face of the adjoining balcony. 7. The units are measured at typical floor in the building. Columns may vary in size depending on the floor level. 8. For each unit type, unit sizes and details might be slightly different. Please refer to the sales and purchase agreement for the actual size of each specific unit.





1 BEDROOM APARTMENT

B  
BLOCK

04 / 12  
FLOORS

12 - LVL 4  
TYPE

685.55  
AREA sq. ft.  
APT 533.78 + BAL 151.77

VIEW  
PANORAMIC+  
POOL VIEW

List of unit numbers with this type, BLOCK B: 0409, 1209.

**Disclaimer:** 1. All room dimensions are measured to structural elements and exclude wall finishes and construction tolerances. 2. All dimensions have been provided by our consultant architects. 3. All materials, dimensions and drawings are approximate. Information is subject to change without notice. 4. Actual suite area may vary from the stated area. Drawings not to scale. The developer reserves the right to make revisions. 5. Calculation of suite area is measured as the area bounded by the centre line of demising or partition walls separating one unit from another unit, the exterior face of all exterior walls, and the exterior face of the corridor wall enclosing the adjoining unit. 6. Calculation of balcony area is measured as the area bounded by the centre line of demising or partition walls separating one unit from another unit, the outmost face of the enclosing guard and the external face of the adjoining balcony. 7. The units are measured at typical floor in the building. Columns may vary in size depending on the floor level. 8. For each unit type, unit sizes and details might be slightly different. Please refer to the sales and purchase agreement for the actual size of each specific unit.



1 BEDROOM APARTMENT

B  
BLOCK

02-03  
05-11  
13-17  
FLOORS

12  
TYPE

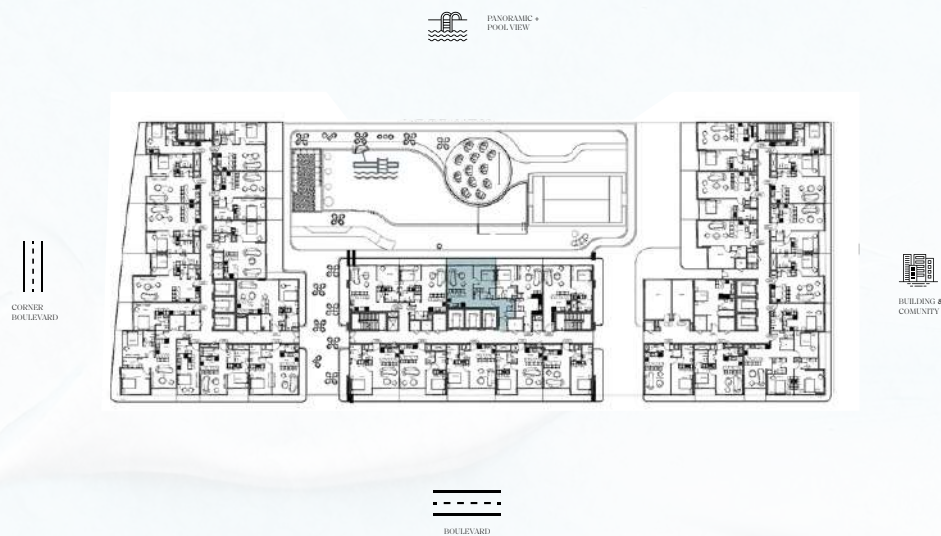
730.97  
AREA sq. ft.  
APT 579.52 + BAL 151.44

VIEW  
PANORAMIC+  
POOL VIEW

List of unit numbers with this type, BLOCK B: 0209, 0309, 0509, 0609, 0709, 0809, 0909, 1009, 1109, 1309, 1409, 1509, 1606, 1706.

**Disclaimer:** 1. All room dimensions are measured to structural elements and exclude wall finishes and construction tolerances. 2. All dimensions have been provided by our consultant architects. 3. All materials, dimensions and drawings are approximate. Information is subject to change without notice. 4. Actual suite area may vary from the stated area. Drawings not to scale. The developer reserves the right to make revisions. 5. Calculation of suite area is measured as the area bounded by the centre line of demising or partition walls separating one unit from another unit, the exterior face of all exterior walls, and the exterior face of the corridor wall enclosing the adjoining unit. 6. Calculation of balcony area is measured as the area bounded by the centre line of demising or partition walls separating one unit from another unit, the outmost face of the enclosing guard and the external face of the adjoining balcony. 7. The units are measured at typical floor in the building. Columns may vary in size depending on the floor level. 8. For each unit type, unit sizes and details might be slightly different. Please refer to the sales and purchase agreement for the actual size of each specific unit.





1 BEDROOM APARTMENT

B  
BLOCK

01  
FLOOR

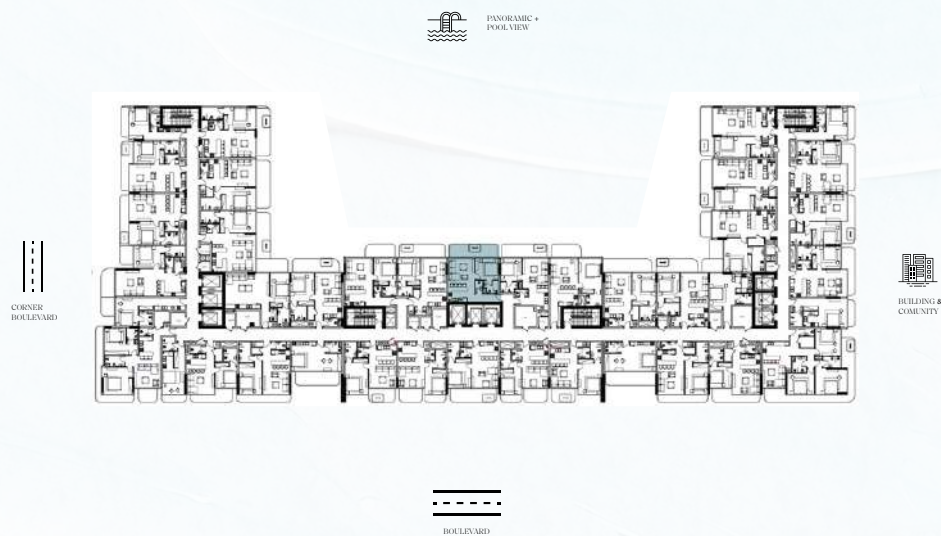
13 - LVL 1  
TYPE

760.03  
AREA sq. ft.  
APT 669.08 + BAL 90.95

VIEW  
PANORAMIC+  
POOL VIEW

List of unit numbers with this type, BLOCK B: 0110.

**Disclaimer:** 1. All room dimensions are measured to structural elements and exclude wall finishes and construction tolerances. 2. All dimensions have been provided by our consultant architects. 3. All materials, dimensions and drawings are approximate. Information is subject to change without notice. 4. Actual suite area may vary from the stated area. Drawings not to scale. The developer reserves the right to make revisions. 5. Calculation of suite area is measured as the area bounded by the centre line of demising or partition walls separating one unit from another unit, the exterior face of all exterior walls, and the exterior face of the corridor wall enclosing the adjoining unit. 6. Calculation of balcony area is measured as the area bounded by the centre line of demising or partition walls separating one unit from another unit, the outmost face of the enclosing guard and the external face of the adjoining balcony. 7. The units are measured at typical floor in the building. Columns may vary in size depending on the floor level. 8. For each unit type, unit sizes and details might be slightly different. Please refer to the sales and purchase agreement for the actual size of each specific unit.



1 BEDROOM APARTMENT

B  
BLOCK

04 / 12  
FLOORS

13 - LVL 4  
TYPE

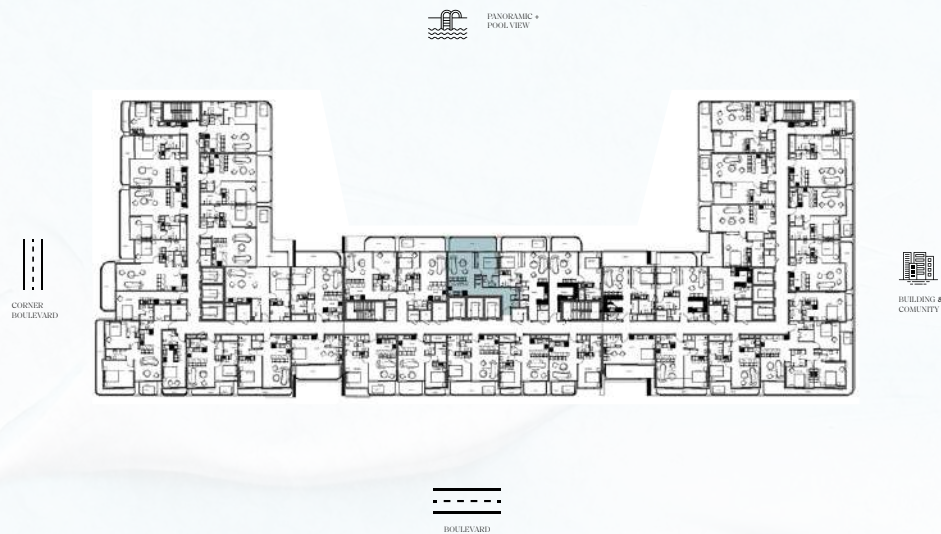
722.79  
AREA sq. ft.  
APT 563.16 + BAL 159.62

VIEW  
PANORAMIC+  
POOL VIEW

List of unit numbers with this type, BLOCK B: 0410, 1210.

**Disclaimer:** 1. All room dimensions are measured to structural elements and exclude wall finishes and construction tolerances. 2. All dimensions have been provided by our consultant architects. 3. All materials, dimensions and drawings are approximate. Information is subject to change without notice. 4. Actual suite area may vary from the stated area. Drawings not to scale. The developer reserves the right to make revisions. 5. Calculation of suite area is measured as the area bounded by the centre line of demising or partition walls separating one unit from another unit, the exterior face of all exterior walls, and the exterior face of the corridor wall enclosing the adjoining unit. 6. Calculation of balcony area is measured as the area bounded by the centre line of demising or partition walls separating one unit from another unit, the outmost face of the enclosing guard and the external face of the adjoining balcony. 7. The units are measured at typical floor in the building. Columns may vary in size depending on the floor level. 8. For each unit type, unit sizes and details might be slightly different. Please refer to the sales and purchase agreement for the actual size of each specific unit.





1 BEDROOM APARTMENT

B  
BLOCK

02-03  
05-11  
13-17  
FLOORS

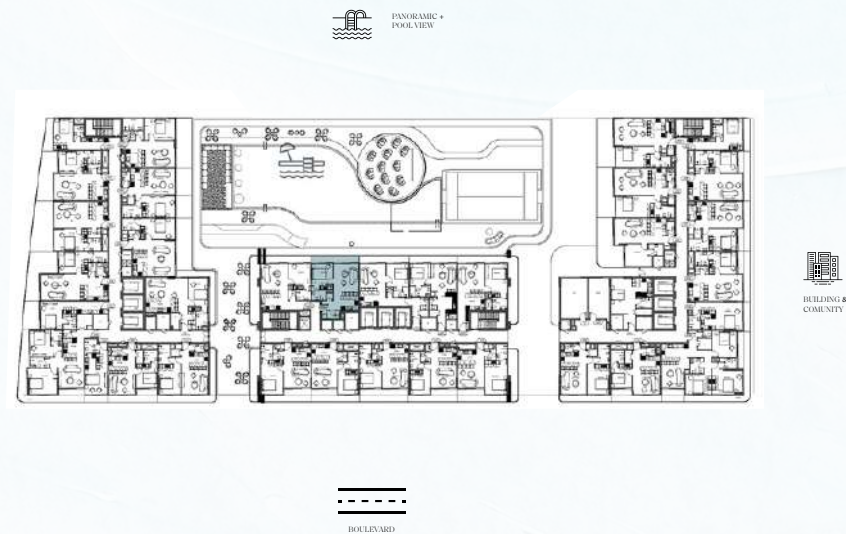
13  
TYPE

828.39  
AREA sq. ft.  
APT 669.08 + BAL 159.30

VIEW  
PANORAMIC+  
POOL VIEW

BLOCK B with Jacuzzi: 0210, 0310.  
BLOCK B without Jacuzzi: 0510, 0610, 0710, 0810, 0910, 1010, 1110, 1310, 1410, 1510, 1607, 1707.

**Disclaimer:** 1. All room dimensions are measured to structural elements and exclude wall finishes and construction tolerances. 2. All dimensions have been provided by our consultant architects. 3. All materials, dimensions and drawings are approximate. Information is subject to change without notice. 4. Actual suite area may vary from the stated area. Drawings not to scale. The developer reserves the right to make revisions. 5. Calculation of suite area is measured as the area bounded by the centre line of demising or partition walls separating one unit from another unit, the exterior face of all exterior walls, and the exterior face of the corridor wall enclosing the adjoining unit. 6. Calculation of balcony area is measured as the area bounded by the centre line of demising or partition walls separating one unit from another unit, the outmost face of the enclosing guard and the external face of the adjoining balcony. 7. The units are measured at typical floor in the building. Columns may vary in size depending on the floor level. 8. For each unit type, unit sizes and details might be slightly different. Please refer to the sales and purchase agreement for the actual size of each specific unit.



1 BEDROOM APARTMENT

B  
BLOCK

01  
FLOOR

14 - LVL 1  
TYPE

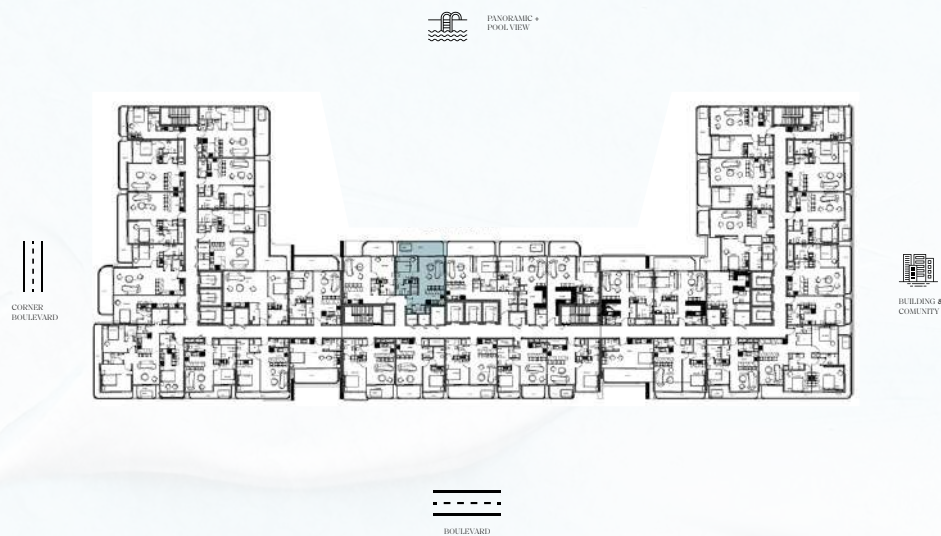
687.27  
AREA sq. ft.  
APT 599.87 + BAL 87.40

VIEW  
PANORAMIC+  
POOL VIEW

List of unit numbers with this type, BLOCK B: 0101.

**Disclaimer:** 1. All room dimensions are measured to structural elements and exclude wall finishes and construction tolerances. 2. All dimensions have been provided by our consultant architects. 3. All materials, dimensions and drawings are approximate. Information is subject to change without notice. 4. Actual suite area may vary from the stated area. Drawings not to scale. The developer reserves the right to make revisions. 5. Calculation of suite area is measured as the area bounded by the centre line of demising or partition walls separating one unit from another unit, the exterior face of all exterior walls, and the exterior face of the corridor wall enclosing the adjoining unit. 6. Calculation of balcony area is measured as the area bounded by the centre line of demising or partition walls separating one unit from another unit, the outmost face of the enclosing guard and the external face of the adjoining balcony. 7. The units are measured at typical floor in the building. Columns may vary in size depending on the floor level. 8. For each unit type, unit sizes and details might be slightly different. Please refer to the sales and purchase agreement for the actual size of each specific unit.





1 BEDROOM APARTMENT

B  
BLOCK

02-17  
FLOORS

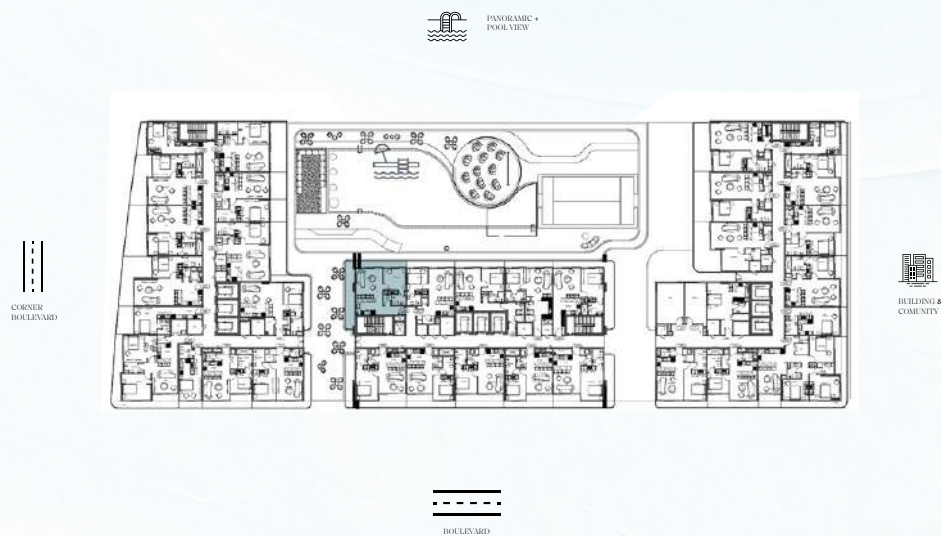
14  
TYPE

752.39  
AREA sq. ft.  
APT 599.87 + BAL 152.52

VIEW  
PANORAMIC+  
POOL VIEW

List of unit numbers with this type, BLOCK B: 0201, 0301, 0401, 0501, 0601, 0701, 0801, 0901, 1001, 1101, 1201, 1301, 1401, 1501, 1601, 1701.

**Disclaimer:** 1. All room dimensions are measured to structural elements and exclude wall finishes and construction tolerances. 2. All dimensions have been provided by our consultant architects. 3. All materials, dimensions and drawings are approximate. Information is subject to change without notice. 4. Actual suite area may vary from the stated area. Drawings not to scale. The developer reserves the right to make revisions. 5. Calculation of suite area is measured as the area bounded by the centre line of demising or partition walls separating one unit from another unit, the exterior face of all exterior walls, and the exterior face of the corridor wall enclosing the adjoining unit. 6. Calculation of balcony area is measured as the area bounded by the centre line of demising or partition walls separating one unit from another unit, the outmost face of the enclosing guard and the external face of the adjoining balcony. 7. The units are measured at typical floor in the building. Columns may vary in size depending on the floor level. 8. For each unit type, unit sizes and details might be slightly different. Please refer to the sales and purchase agreement for the actual size of each specific unit.



1 BEDROOM APARTMENT

B  
BLOCK

01  
FLOOR

15 - LVL 1  
TYPE

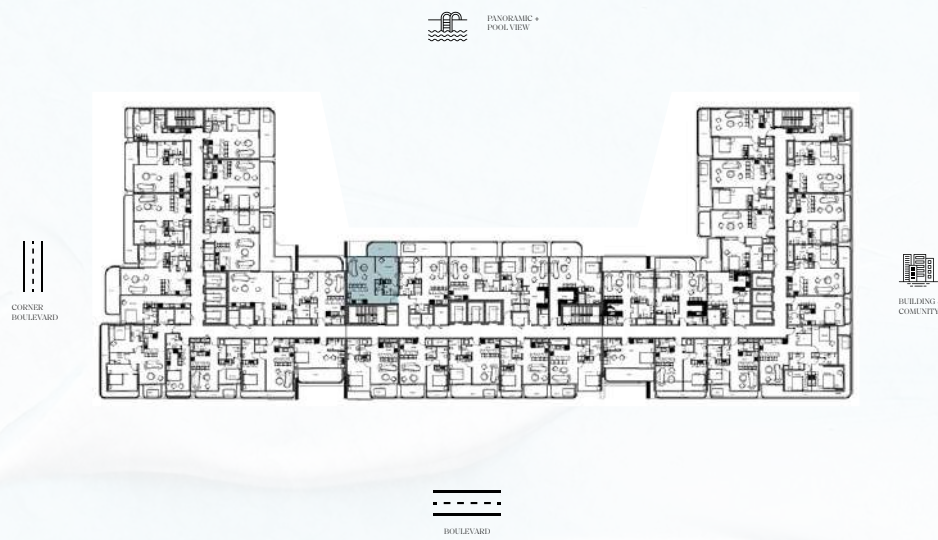
889.31  
AREA sq. ft.  
APT 609.02 + BAL 280.29

VIEW  
PANORAMIC+  
POOL VIEW

List of unit numbers with this type, BLOCK B: 0102.

**Disclaimer:** 1. All room dimensions are measured to structural elements and exclude wall finishes and construction tolerances. 2. All dimensions have been provided by our consultant architects. 3. All materials, dimensions and drawings are approximate. Information is subject to change without notice. 4. Actual suite area may vary from the stated area. Drawings not to scale. The developer reserves the right to make revisions. 5. Calculation of suite area is measured as the area bounded by the centre line of demising or partition walls separating one unit from another unit, the exterior face of all exterior walls, and the exterior face of the corridor wall enclosing the adjoining unit. 6. Calculation of balcony area is measured as the area bounded by the centre line of demising or partition walls separating one unit from another unit, the outmost face of the enclosing guard and the external face of the adjoining balcony. 7. The units are measured at typical floor in the building. Columns may vary in size depending on the floor level. 8. For each unit type, unit sizes and details might be slightly different. Please refer to the sales and purchase agreement for the actual size of each specific unit.



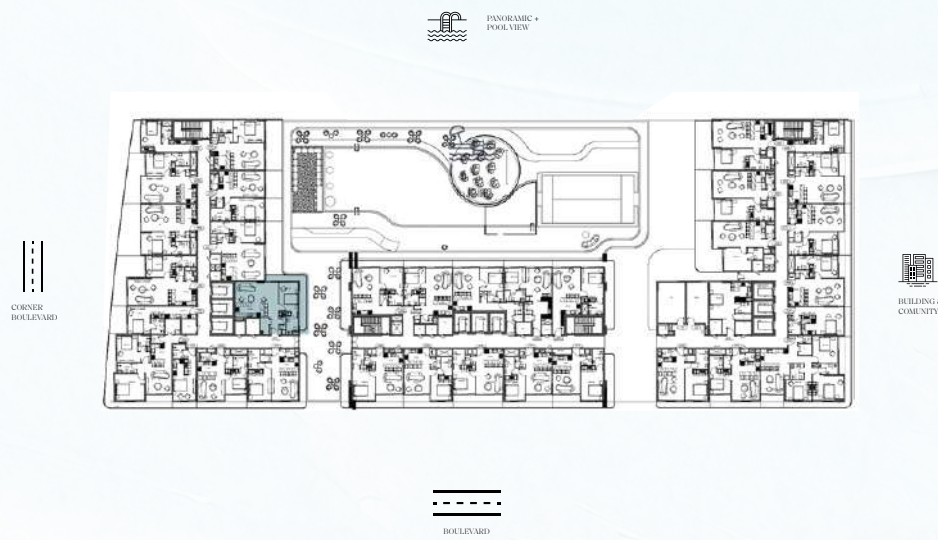


1 BEDROOM APARTMENT

B BLOCK	02-17 FLOORS	15 TYPE	706.97 AREA sq. ft. APT 609.02 + BAL 97.95	VIEW PANORAMIC+ POOL VIEW
------------	-----------------	------------	--	---------------------------------

List of unit numbers with this type, BLOCK B: 0202, 0302, 0402, 0502, 0602, 0702, 0802, 0902, 1002, 1102, 1202, 1302, 1402, 1502, 1602, 1702.

**Disclaimer:** 1. All room dimensions are measured to structural elements and exclude wall finishes and construction tolerances. 2. All dimensions have been provided by our consultant architects. 3. All materials, dimensions and drawings are approximate. Information is subject to change without notice. 4. Actual suite area may vary from the stated area. Drawings not to scale. The developer reserves the right to make revisions. 5. Calculation of suite area is measured as the area bounded by the centre line of demising or partition walls separating one unit from another unit, the exterior face of all exterior walls, and the exterior face of the corridor wall enclosing the adjoining unit. 6. Calculation of balcony area is measured as the area bounded by the centre line of demising or partition walls separating one unit from another unit, the outmost face of the enclosing guard and the external face of the adjoining balcony. 7. The units are measured at typical floor in the building. Columns may vary in size depending on the floor level. 8. For each unit type, unit sizes and details might be slightly different. Please refer to the sales and purchase agreement for the actual size of each specific unit.



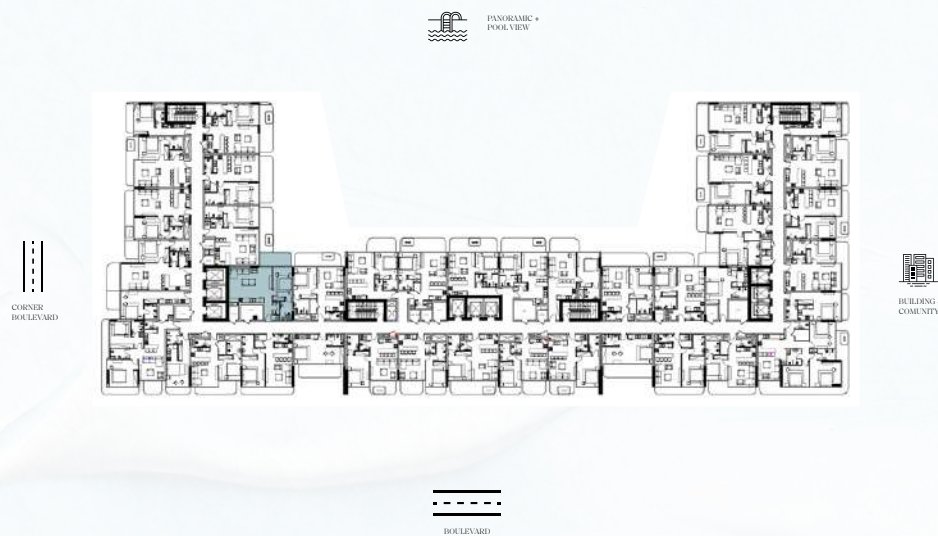
1 BEDROOM APARTMENT

C BLOCK	01 FLOOR	16 - LVL 1 TYPE	849.38 AREA sq. ft. APT 742.17 + BAL 107.20	VIEW PANORAMIC+ POOL VIEW
------------	-------------	--------------------	---	---------------------------------

List of unit numbers with this type, BLOCK C: 0113.

**Disclaimer:** 1. All room dimensions are measured to structural elements and exclude wall finishes and construction tolerances. 2. All dimensions have been provided by our consultant architects. 3. All materials, dimensions and drawings are approximate. Information is subject to change without notice. 4. Actual suite area may vary from the stated area. Drawings not to scale. The developer reserves the right to make revisions. 5. Calculation of suite area is measured as the area bounded by the centre line of demising or partition walls separating one unit from another unit, the exterior face of all exterior walls, and the exterior face of the corridor wall enclosing the adjoining unit. 6. Calculation of balcony area is measured as the area bounded by the centre line of demising or partition walls separating one unit from another unit, the outmost face of the enclosing guard and the external face of the adjoining balcony. 7. The units are measured at typical floor in the building. Columns may vary in size depending on the floor level. 8. For each unit type, unit sizes and details might be slightly different. Please refer to the sales and purchase agreement for the actual size of each specific unit.





1 BEDROOM APARTMENT

C  
BLOCK

04  
FLOOR

16 - LVL 4  
TYPE

809.44  
AREA sq. ft.  
APT 702.23 + BAL 107.20

VIEW  
PANORAMIC+  
POOL VIEW

List of unit numbers with this type, BLOCK C: 0415.

**Disclaimer:** 1. All room dimensions are measured to structural elements and exclude wall finishes and construction tolerances. 2. All dimensions have been provided by our consultant architects. 3. All materials, dimensions and drawings are approximate. Information is subject to change without notice. 4. Actual suite area may vary from the stated area. Drawings not to scale. The developer reserves the right to make revisions. 5. Calculation of suite area is measured as the area bounded by the centre line of demising or partition walls separating one unit from another unit, the exterior face of all exterior walls, and the exterior face of the corridor wall enclosing the adjoining unit. 6. Calculation of balcony area is measured as the area bounded by the centre line of demising or partition walls separating one unit from another unit, the outmost face of the enclosing guard and the external face of the adjoining balcony. 7. The units are measured at typical floor in the building. Columns may vary in size depending on the floor level. 8. For each unit type, unit sizes and details might be slightly different. Please refer to the sales and purchase agreement for the actual size of each specific unit.



1 BEDROOM APARTMENT

C  
BLOCK

02-03  
05-11  
FLOORS

16  
TYPE

849.38  
AREA sq. ft.  
APT 742.17 + BAL 107.20

VIEW  
PANORAMIC+  
POOL VIEW

List of unit numbers with this type, BLOCK C: 0213, 0313, 0515, 0615, 0715, 0815, 0915, 1011, 1109.

**Disclaimer:** 1. All room dimensions are measured to structural elements and exclude wall finishes and construction tolerances. 2. All dimensions have been provided by our consultant architects. 3. All materials, dimensions and drawings are approximate. Information is subject to change without notice. 4. Actual suite area may vary from the stated area. Drawings not to scale. The developer reserves the right to make revisions. 5. Calculation of suite area is measured as the area bounded by the centre line of demising or partition walls separating one unit from another unit, the exterior face of all exterior walls, and the exterior face of the corridor wall enclosing the adjoining unit. 6. Calculation of balcony area is measured as the area bounded by the centre line of demising or partition walls separating one unit from another unit, the outmost face of the enclosing guard and the external face of the adjoining balcony. 7. The units are measured at typical floor in the building. Columns may vary in size depending on the floor level. 8. For each unit type, unit sizes and details might be slightly different. Please refer to the sales and purchase agreement for the actual size of each specific unit.





1 BEDROOM APARTMENT

C  
BLOCK

01-11  
FLOORS

17  
TYPE

904.38  
AREA sq. ft.  
APT 750.78 + BAL 153.60

VIEW  
PANORAMIC+  
POOL VIEW

BLOCK C with Jacuzzi: 0201, 0301, 0401, 0501, 0601, 0701, 0801, 0901.  
BLOCK C without Jacuzzi: 0101, 1001, 1101.

**Disclaimer:** 1. All room dimensions are measured to structural elements and exclude wall finishes and construction tolerances. 2. All dimensions have been provided by our consultant architects. 3. All materials, dimensions and drawings are approximate. Information is subject to change without notice. 4. Actual suite area may vary from the stated area. Drawings not to scale. The developer reserves the right to make revisions. 5. Calculation of suite area is measured as the area bounded by the centre line of demising or partition walls separating one unit from another unit, the exterior face of all exterior walls, and the exterior face of the corridor wall enclosing the adjoining unit. 6. Calculation of balcony area is measured as the area bounded by the centre line of demising or partition walls separating one unit from another unit, the outmost face of the enclosing guard and the external face of the adjoining balcony. 7. The units are measured at typical floor in the building. Columns may vary in size depending on the floor level. 8. For each unit type, unit sizes and details might be slightly different. Please refer to the sales and purchase agreement for the actual size of each specific unit.



1 BEDROOM APARTMENT

C  
BLOCK

01-09  
FLOORS

18  
TYPE

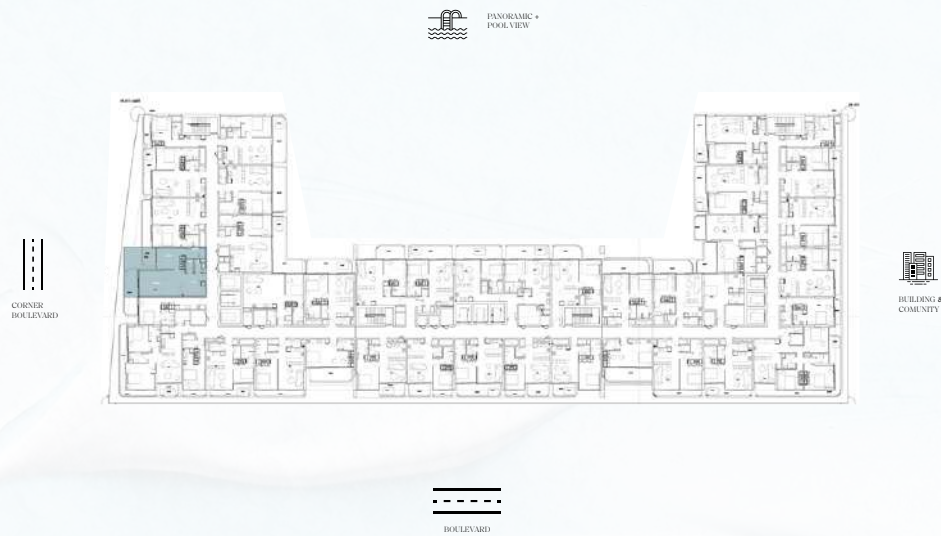
835.81  
AREA sq. ft.  
APT 671.88 + BAL 163.93

VIEW  
PANORAMIC+  
POOL VIEW

BLOCK C with Jacuzzi: 0203, 0303, 0403, 0503, 0603, 0703, 0803, 0903.  
BLOCK C without Jacuzzi: 0103.

**Disclaimer:** 1. All room dimensions are measured to structural elements and exclude wall finishes and construction tolerances. 2. All dimensions have been provided by our consultant architects. 3. All materials, dimensions and drawings are approximate. Information is subject to change without notice. 4. Actual suite area may vary from the stated area. Drawings not to scale. The developer reserves the right to make revisions. 5. Calculation of suite area is measured as the area bounded by the centre line of demising or partition walls separating one unit from another unit, the exterior face of all exterior walls, and the exterior face of the corridor wall enclosing the adjoining unit. 6. Calculation of balcony area is measured as the area bounded by the centre line of demising or partition walls separating one unit from another unit, the outmost face of the enclosing guard and the external face of the adjoining balcony. 7. The units are measured at typical floor in the building. Columns may vary in size depending on the floor level. 8. For each unit type, unit sizes and details might be slightly different. Please refer to the sales and purchase agreement for the actual size of each specific unit.





1 BEDROOM APARTMENT

C  
BLOCK

01-09  
FLOORS

19  
TYPE

914.93  
AREA sq. ft.  
APT 757.77 + BAL 1157.15

VIEW  
CORNER  
BOULEVARD

BLOCK C with Jacuzzi: 0207, 0307, 0407.  
BLOCK C without Jacuzzi: 0107, 0507, 0607, 0707, 0807, 0907.

**Disclaimer:** 1. All room dimensions are measured to structural elements and exclude wall finishes and construction tolerances. 2. All dimensions have been provided by our consultant architects. 3. All materials, dimensions and drawings are approximate. Information is subject to change without notice. 4. Actual suite area may vary from the stated area. Drawings not to scale. The developer reserves the right to make revisions. 5. Calculation of suite area is measured as the area bounded by the centre line of demising or partition walls separating one unit from another unit, the exterior face of all exterior walls, and the exterior face of the corridor wall enclosing the adjoining unit. 6. Calculation of balcony area is measured as the area bounded by the centre line of demising or partition walls separating one unit from another unit, the outmost face of the enclosing guard and the external face of the adjoining balcony. 7. The units are measured at typical floor in the building. Columns may vary in size depending on the floor level. 8. For each unit type, unit sizes and details might be slightly different. Please refer to the sales and purchase agreement for the actual size of each specific unit.



1 BEDROOM APARTMENT

A  
BLOCK

10-11  
FLOORS

20  
TYPE

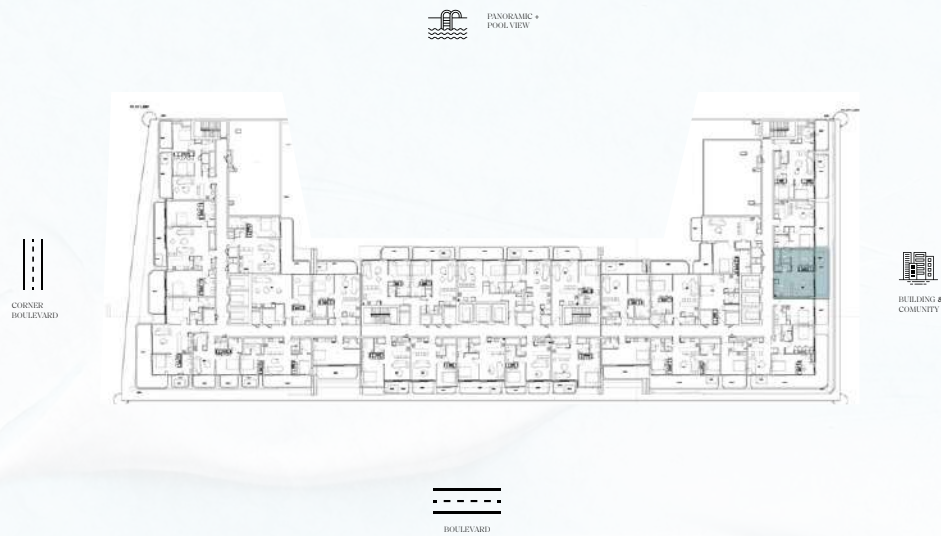
704.17  
AREA sq. ft.  
APT 543.79 + BAL 160.38

VIEW  
BUILDING &  
COMUNITY

List of unit numbers with this type, BLOCK A: 1010, 1110.

**Disclaimer:** 1. All room dimensions are measured to structural elements and exclude wall finishes and construction tolerances. 2. All dimensions have been provided by our consultant architects. 3. All materials, dimensions and drawings are approximate. Information is subject to change without notice. 4. Actual suite area may vary from the stated area. Drawings not to scale. The developer reserves the right to make revisions. 5. Calculation of suite area is measured as the area bounded by the centre line of demising or partition walls separating one unit from another unit, the exterior face of all exterior walls, and the exterior face of the corridor wall enclosing the adjoining unit. 6. Calculation of balcony area is measured as the area bounded by the centre line of demising or partition walls separating one unit from another unit, the outmost face of the enclosing guard and the external face of the adjoining balcony. 7. The units are measured at typical floor in the building. Columns may vary in size depending on the floor level. 8. For each unit type, unit sizes and details might be slightly different. Please refer to the sales and purchase agreement for the actual size of each specific unit.





1 BEDROOM APARTMENT

A  
BLOCK

10/11  
FLOORS

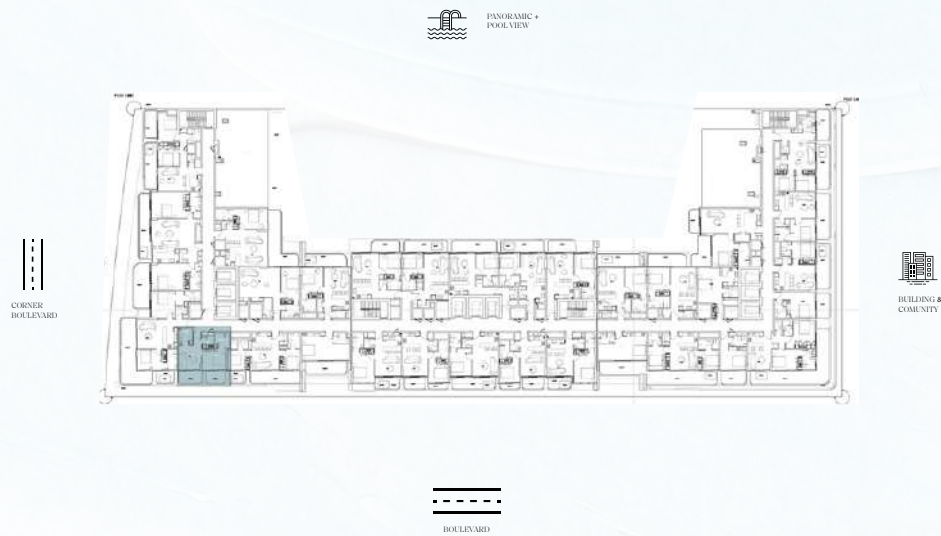
21  
TYPE

679.95  
AREA sq. ft.  
APT 519.57 + BAL 160.38

VIEW  
BUILDING &  
COMUNITY

List of unit numbers with this type, BLOCK A: 1009, 1109.

**Disclaimer:** 1. All room dimensions are measured to structural elements and exclude wall finishes and construction tolerances. 2. All dimensions have been provided by our consultant architects. 3. All materials, dimensions and drawings are approximate. Information is subject to change without notice. 4. Actual suite area may vary from the stated area. Drawings not to scale. The developer reserves the right to make revisions. 5. Calculation of suite area is measured as the area bounded by the centre line of demising or partition walls separating one unit from another unit, the exterior face of all exterior walls, and the exterior face of the corridor wall enclosing the adjoining unit. 6. Calculation of balcony area is measured as the area bounded by the centre line of demising or partition walls separating one unit from another unit, the outmost face of the enclosing guard and the external face of the adjoining balcony. 7. The units are measured at typical floor in the building. Columns may vary in size depending on the floor level. 8. For each unit type, unit sizes and details might be slightly different. Please refer to the sales and purchase agreement for the actual size of each specific unit.



1 BEDROOM APARTMENT

C  
BLOCK

10/11  
FLOORS

22  
TYPE

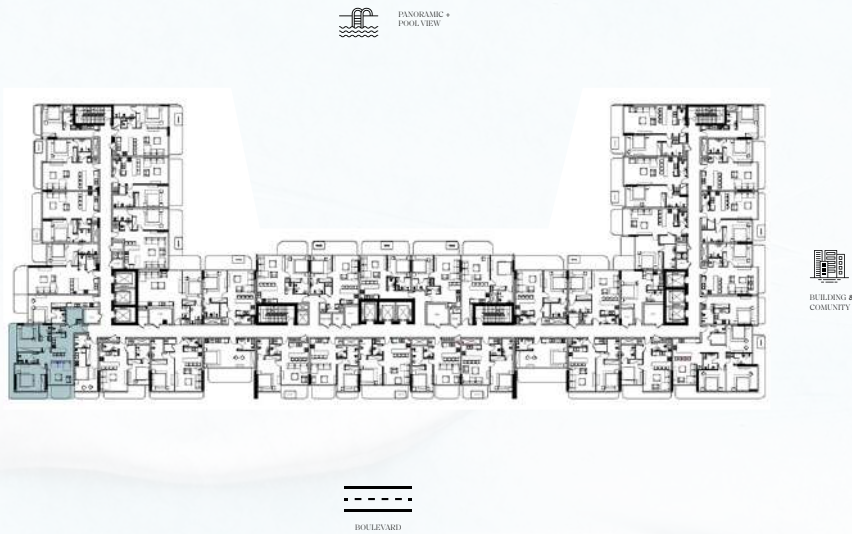
661.54  
AREA sq. ft.  
APT 512.79 + BAL 148.75

VIEW  
BOULEVARD

List of unit numbers with this type, BLOCK C: 1007, 1105.

**Disclaimer:** 1. All room dimensions are measured to structural elements and exclude wall finishes and construction tolerances. 2. All dimensions have been provided by our consultant architects. 3. All materials, dimensions and drawings are approximate. Information is subject to change without notice. 4. Actual suite area may vary from the stated area. Drawings not to scale. The developer reserves the right to make revisions. 5. Calculation of suite area is measured as the area bounded by the centre line of demising or partition walls separating one unit from another unit, the exterior face of all exterior walls, and the exterior face of the corridor wall enclosing the adjoining unit. 6. Calculation of balcony area is measured as the area bounded by the centre line of demising or partition walls separating one unit from another unit, the outmost face of the enclosing guard and the external face of the adjoining balcony. 7. The units are measured at typical floor in the building. Columns may vary in size depending on the floor level. 8. For each unit type, unit sizes and details might be slightly different. Please refer to the sales and purchase agreement for the actual size of each specific unit.





2 BEDROOM APARTMENT

C  
BLOCK

01-09  
FLOORS

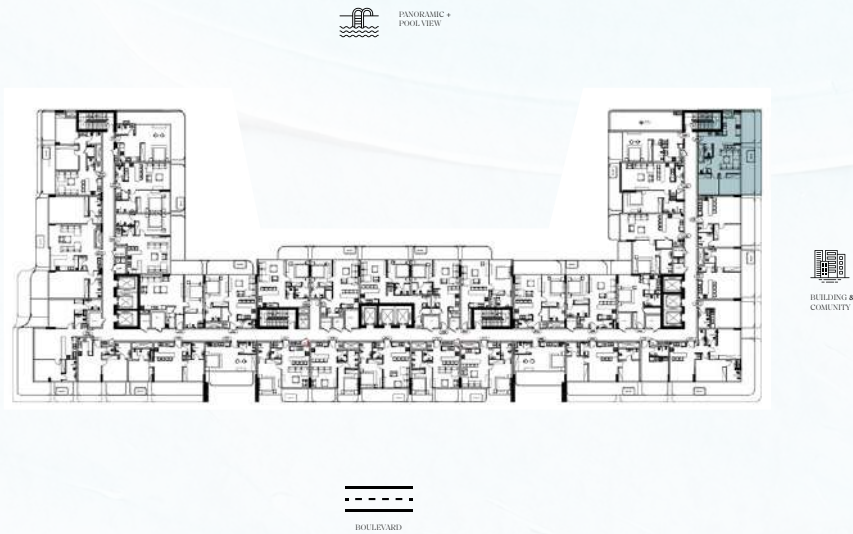
01  
TYPE

1227.62  
AREA sq. ft.  
APT 985.97 + BAL 241.64

VIEW  
CORNER  
BOULEVARD

BLOCK C with Jacuzzi: 0209, 0309, 0409, 0509, 0609, 0809, 0909.  
BLOCK C without Jacuzzi: 0109.

**Disclaimer:** 1. All room dimensions are measured to structural elements and exclude wall finishes and construction tolerances. 2. All dimensions have been provided by our consultant architects. 3. All materials, dimensions and drawings are approximate. Information is subject to change without notice. 4. Actual suite area may vary from the stated area. Drawings not to scale. The developer reserves the right to make revisions. 5. Calculation of suite area is measured as the area bounded by the centre line of demising or partition walls separating one unit from another unit, the exterior face of all exterior walls, and the exterior face of the corridor wall enclosing the adjoining unit. 6. Calculation of balcony area is measured as the area bounded by the centre line of demising or partition walls separating one unit from another unit, the outmost face of the enclosing guard and the external face of the adjoining balcony. 7. The units are measured at typical floor in the building. Columns may vary in size depending on the floor level. 8. For each unit type, unit sizes and details might be slightly different. Please refer to the sales and purchase agreement for the actual size of each specific unit.



2 BEDROOM APARTMENT

A  
BLOCK

10/11  
FLOORS

02  
TYPE

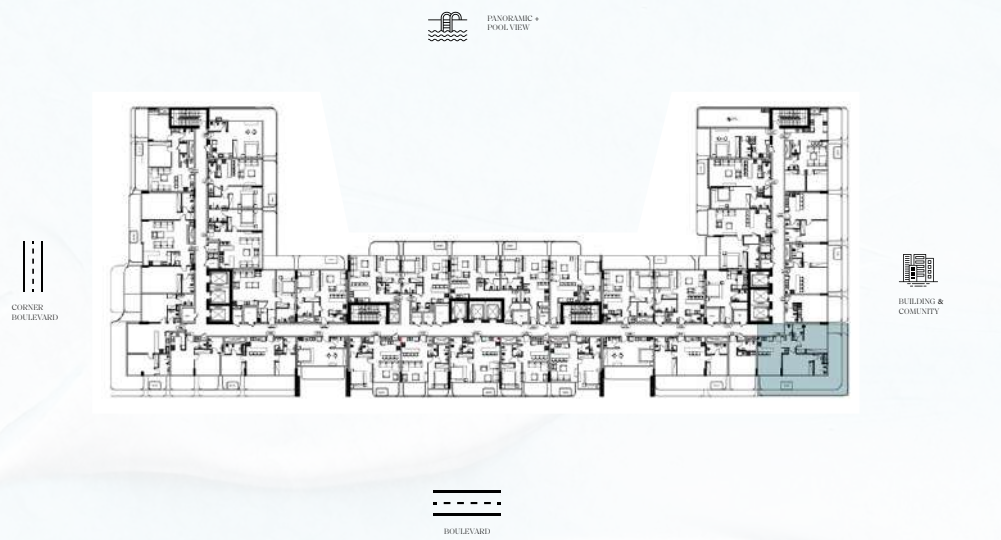
990.71  
AREA sq. ft.  
APT 725.59 + BAL 265.11

VIEW  
BUILDING &  
COMUNITY

List of unit numbers with this type, BLOCK A: 1011, 1111.

**Disclaimer:** 1. All room dimensions are measured to structural elements and exclude wall finishes and construction tolerances. 2. All dimensions have been provided by our consultant architects. 3. All materials, dimensions and drawings are approximate. Information is subject to change without notice. 4. Actual suite area may vary from the stated area. Drawings not to scale. The developer reserves the right to make revisions. 5. Calculation of suite area is measured as the area bounded by the centre line of demising or partition walls separating one unit from another unit, the exterior face of all exterior walls, and the exterior face of the corridor wall enclosing the adjoining unit. 6. Calculation of balcony area is measured as the area bounded by the centre line of demising or partition walls separating one unit from another unit, the outmost face of the enclosing guard and the external face of the adjoining balcony. 7. The units are measured at typical floor in the building. Columns may vary in size depending on the floor level. 8. For each unit type, unit sizes and details might be slightly different. Please refer to the sales and purchase agreement for the actual size of each specific unit.





2 BEDROOM APARTMENT

A  
BLOCK

10/11  
FLOORS

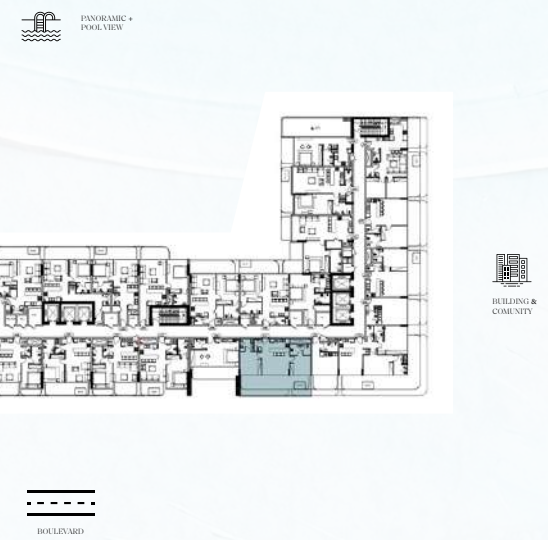
03  
TYPE

1250.22  
AREA sq. ft.  
APT 827.95 + BAL 422.26

VIEW  
BUILDING &  
COMUNITY  
BOULEVARD

List of unit numbers with this type, BLOCK A: 1007,1107.

**Disclaimer:** 1. All room dimensions are measured to structural elements and exclude wall finishes and construction tolerances. 2. All dimensions have been provided by our consultant architects. 3. All materials, dimensions and drawings are approximate. Information is subject to change without notice. 4. Actual suite area may vary from the stated area. Drawings not to scale. The developer reserves the right to make revisions. 5. Calculation of suite area is measured as the area bounded by the centre line of demising or partition walls separating one unit from another unit, the exterior face of all exterior walls, and the exterior face of the corridor wall enclosing the adjoining unit. 6. Calculation of balcony area is measured as the area bounded by the centre line of demising or partition walls separating one unit from another unit, the outmost face of the enclosing guard and the external face of the adjoining balcony. 7. The units are measured at typical floor in the building. Columns may vary in size depending on the floor level. 8. For each unit type, unit sizes and details might be slightly different. Please refer to the sales and purchase agreement for the actual size of each specific unit.



2 BEDROOM APARTMENT

A  
BLOCK

10/11  
FLOORS

04  
TYPE

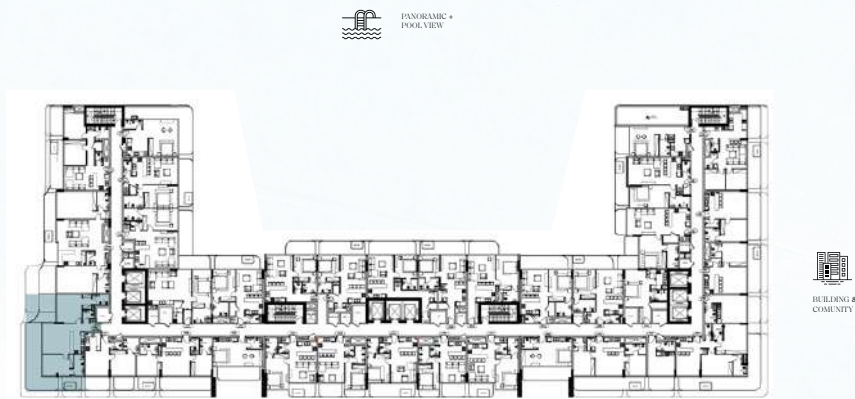
930.43  
AREA sq. ft.  
APT 688.99 + BAL 241.43

VIEW  
BOULEVARD

List of unit numbers with this type, BLOCK A: 1005,1105.  
List of unit numbers with this type, BLOCK C: 1008,1108.

**Disclaimer:** 1. All room dimensions are measured to structural elements and exclude wall finishes and construction tolerances. 2. All dimensions have been provided by our consultant architects. 3. All materials, dimensions and drawings are approximate. Information is subject to change without notice. 4. Actual suite area may vary from the stated area. Drawings not to scale. The developer reserves the right to make revisions. 5. Calculation of suite area is measured as the area bounded by the centre line of demising or partition walls separating one unit from another unit, the exterior face of all exterior walls, and the exterior face of the corridor wall enclosing the adjoining unit. 6. Calculation of balcony area is measured as the area bounded by the centre line of demising or partition walls separating one unit from another unit, the outmost face of the enclosing guard and the external face of the adjoining balcony. 7. The units are measured at typical floor in the building. Columns may vary in size depending on the floor level. 8. For each unit type, unit sizes and details might be slightly different. Please refer to the sales and purchase agreement for the actual size of each specific unit.





2 BEDROOM APARTMENT

C  
BLOCK

10/11  
FLOORS

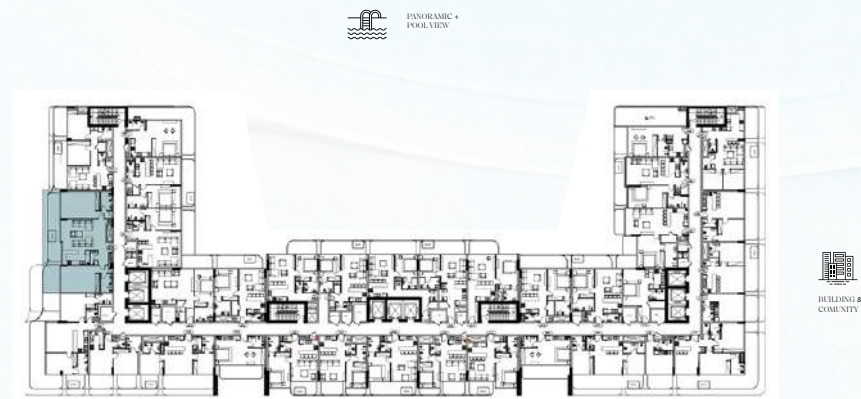
05  
TYPE

1383.70  
AREA sq. ft.  
APT 918.80 + BAL 464.89

VIEW  
CORNER  
BOULEVARD  
BOULEVARD

List of unit numbers with this type, BLOCK C: 1006,1106.

**Disclaimer:** 1. All room dimensions are measured to structural elements and exclude wall finishes and construction tolerances. 2. All dimensions have been provided by our consultant architects. 3. All materials, dimensions and drawings are approximate. Information is subject to change without notice. 4. Actual suite area may vary from the stated area. Drawings not to scale. The developer reserves the right to make revisions. 5. Calculation of suite area is measured as the area bounded by the centre line of demising or partition walls separating one unit from another unit, the exterior face of all exterior walls, and the exterior face of the corridor wall enclosing the adjoining unit. 6. Calculation of balcony area is measured as the area bounded by the centre line of demising or partition walls separating one unit from another unit, the outmost face of the enclosing guard and the external face of the adjoining balcony. 7. The units are measured at typical floor in the building. Columns may vary in size depending on the floor level. 8. For each unit type, unit sizes and details might be slightly different. Please refer to the sales and purchase agreement for the actual size of each specific unit.



2 BEDROOM APARTMENT

C  
BLOCK

10/11  
FLOORS

06  
TYPE

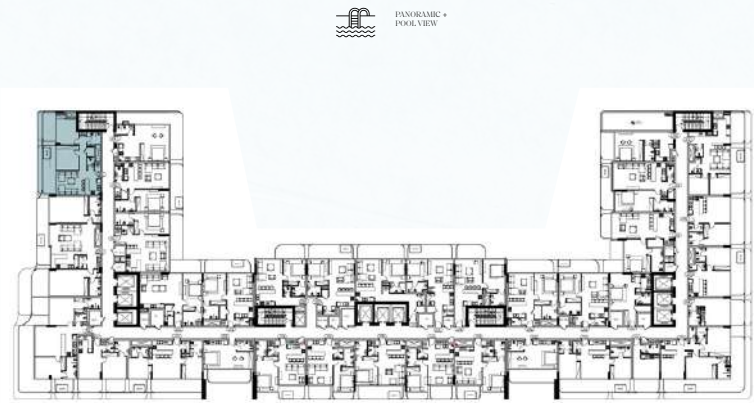
1621.47  
AREA sq. ft.  
APT 1289.83 + BAL 331.63

VIEW  
CORNER  
BOULEVARD

List of unit numbers with this type, BLOCK C: 1005, 1105.

**Disclaimer:** 1. All room dimensions are measured to structural elements and exclude wall finishes and construction tolerances. 2. All dimensions have been provided by our consultant architects. 3. All materials, dimensions and drawings are approximate. Information is subject to change without notice. 4. Actual suite area may vary from the stated area. Drawings not to scale. The developer reserves the right to make revisions. 5. Calculation of suite area is measured as the area bounded by the centre line of demising or partition walls separating one unit from another unit, the exterior face of all exterior walls, and the exterior face of the corridor wall enclosing the adjoining unit. 6. Calculation of balcony area is measured as the area bounded by the centre line of demising or partition walls separating one unit from another unit, the outmost face of the enclosing guard and the external face of the adjoining balcony. 7. The units are measured at typical floor in the building. Columns may vary in size depending on the floor level. 8. For each unit type, unit sizes and details might be slightly different. Please refer to the sales and purchase agreement for the actual size of each specific unit.





2 BEDROOM APARTMENT

C  
BLOCK

10/11  
FLOORS

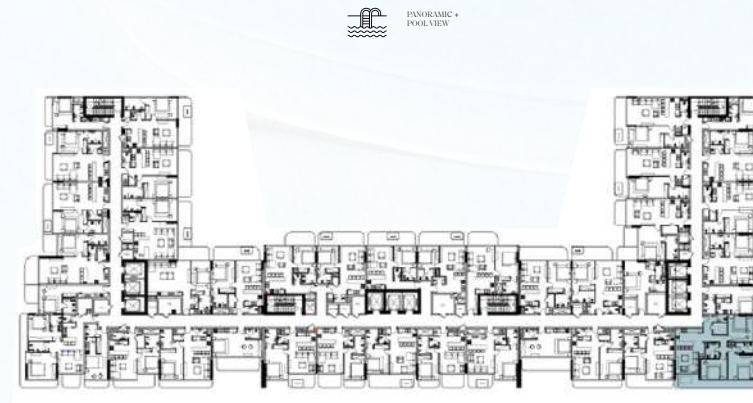
07  
TYPE

1041.83  
AREA sq. ft.  
APT 776.72 + BAL 265.11

VIEW  
CORNER  
BOULEVARD

List of unit numbers with this type, BLOCK C: 1004, 1104.

**Disclaimer:** 1. All room dimensions are measured to structural elements and exclude wall finishes and construction tolerances. 2. All dimensions have been provided by our consultant architects. 3. All materials, dimensions and drawings are approximate. Information is subject to change without notice. 4. Actual suite area may vary from the stated area. Drawings not to scale. The developer reserves the right to make revisions. 5. Calculation of suite area is measured as the area bounded by the centre line of demising or partition walls separating one unit from another unit, the exterior face of all exterior walls, and the exterior face of the corridor wall enclosing the adjoining unit. 6. Calculation of balcony area is measured as the area bounded by the centre line of demising or partition walls separating one unit from another unit, the outmost face of the enclosing guard and the external face of the adjoining balcony. 7. The units are measured at typical floor in the building. Columns may vary in size depending on the floor level. 8. For each unit type, unit sizes and details might be slightly different. Please refer to the sales and purchase agreement for the actual size of each specific unit.



3 BEDROOM APARTMENT

A  
BLOCK

01-09  
FLOORS

01  
TYPE

1508.8  
AREA sq. ft.  
APT 1174.77 + BAL 334.11

VIEW  
BUILDING &  
COMUNITY  
BOULEVARD

BLOCK A with Jacuzzi: 0205, 0305, 0407, 0507, 0607, 0707, 0807, 0907.  
BLOCK A without Jacuzzi: 0104.

**Disclaimer:** 1. All room dimensions are measured to structural elements and exclude wall finishes and construction tolerances. 2. All dimensions have been provided by our consultant architects. 3. All materials, dimensions and drawings are approximate. Information is subject to change without notice. 4. Actual suite area may vary from the stated area. Drawings not to scale. The developer reserves the right to make revisions. 5. Calculation of suite area is measured as the area bounded by the centre line of demising or partition walls separating one unit from another unit, the exterior face of all exterior walls, and the exterior face of the corridor wall enclosing the adjoining unit. 6. Calculation of balcony area is measured as the area bounded by the centre line of demising or partition walls separating one unit from another unit, the outmost face of the enclosing guard and the external face of the adjoining balcony. 7. The units are measured at typical floor in the building. Columns may vary in size depending on the floor level. 8. For each unit type, unit sizes and details might be slightly different. Please refer to the sales and purchase agreement for the actual size of each specific unit.





B BLOCK	16/17 FLOORS	02.A TYPE	1636.97 AREA sq. ft. APT 1239.03 + BAL 397.94	VIEW BOULEVARD
------------	-----------------	--------------	---	-------------------

List of unit numbers with this type, BLOCK B: 1604, 1704.

**Disclaimer:** 1. All room dimensions are measured to structural elements and exclude wall finishes and construction tolerances. 2. All dimensions have been provided by our consultant architects. 3. All materials, dimensions and drawings are approximate. Information is subject to change without notice. 4. Actual suite area may vary from the stated area. Drawings not to scale. The developer reserves the right to make revisions. 5. Calculation of suite area is measured as the area bounded by the centre line of demising or partition walls separating one unit from another unit, the exterior face of all exterior walls, and the exterior face of the corridor wall enclosing the adjoining unit. 6. Calculation of balcony area is measured as the area bounded by the centre line of demising or partition walls separating one unit from another unit, the outmost face of the enclosing guard and the external face of the adjoining balcony. 7. The units are measured at typical floor in the building. Columns may vary in size depending on the floor level. 8. For each unit type, unit sizes and details might be slightly different. Please refer to the sales and purchase agreement for the actual size of each specific unit.



B BLOCK	16/17 FLOORS	02 TYPE	1622.33 AREA sq. ft. APT 1260.56 + BAL 361.77	VIEW BOULEVARD
------------	-----------------	------------	---	-------------------

List of unit numbers with this type, BLOCK B: 1603, 1703.

**Disclaimer:** 1. All room dimensions are measured to structural elements and exclude wall finishes and construction tolerances. 2. All dimensions have been provided by our consultant architects. 3. All materials, dimensions and drawings are approximate. Information is subject to change without notice. 4. Actual suite area may vary from the stated area. Drawings not to scale. The developer reserves the right to make revisions. 5. Calculation of suite area is measured as the area bounded by the centre line of demising or partition walls separating one unit from another unit, the exterior face of all exterior walls, and the exterior face of the corridor wall enclosing the adjoining unit. 6. Calculation of balcony area is measured as the area bounded by the centre line of demising or partition walls separating one unit from another unit, the outmost face of the enclosing guard and the external face of the adjoining balcony. 7. The units are measured at typical floor in the building. Columns may vary in size depending on the floor level. 8. For each unit type, unit sizes and details might be slightly different. Please refer to the sales and purchase agreement for the actual size of each specific unit.