



VIVANTI

RESIDENCES BY METEORA

A PROJECT BY
METEORA
DEVELOPERS



STEP INTO THE WORLD OF
Elevated Privileges

Embracing Your Passion to Stay Closer

At Meteora Developers, we share your passion for sports, music and the arts. While we have been building homes with elevated privileges, we have keenly supported these interests and contributed to making your communities more vibrant.

This has helped us bring our worlds together, stay connected and remain closer to you. While we continue to support world class sporting events, musical evenings and art exhibitions through our sub-brand 'Meteora Developers Presents', we are also equally excited to launch more homes with 'Elevated Privileges'!



It's time to step in

It takes a dynamic team with a strong vision, deep insight, and flawless execution to create a fresh, affordable, yet perfectly elegant and exclusive environment within the context of Jumeirah Village Circle. The collaborative innovators behind the Vivanti Residences have worked in great synergy to breathe life into several exceptional properties in JVC, down to the last subtle detail. We are also glad to announce the handover of The East Crest along with this new property launch at JVC.



HANDOVER: Q1 2025

THE EAST CREST

HANDOVER: Q1 2025

7 PARK CENTRAL

HANDOVER: Q3 2025

VITA GRANDE

HANDOVER: Q4 2026

PARK BOULEVARD





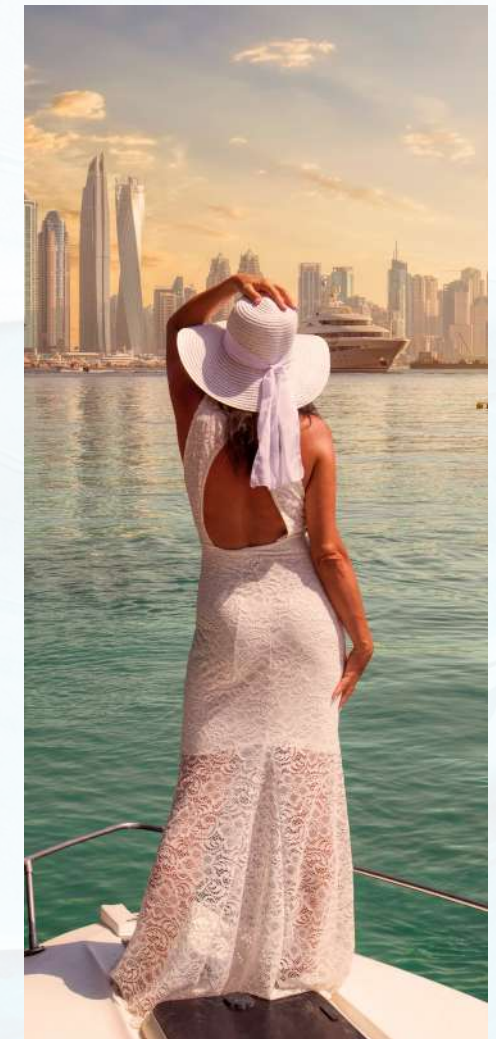
*Something special and distinct
Design that is effortless, elegant, individual
The right step into a life what we all seek
The beginning of a new world.
The world of Elite choices
This is Vivanti*



Welcome to the Urban Utopia

Covered by acres of tranquil park spaces and golf courses, a dynamic blend of historic landmarks and modern skyscrapers, premium shopping & entertainment - here is a city that offers the best the world has to offer.

From the most visited shopping mall in the world to the longest driverless metro network to the fastest police car in service to the world's tallest architectural wonder along with the tallest residential building as well as the tallest hotel - in Dubai there's always a new adventure to be had.





A vibrant neighborhood with brilliant architecture and natural beauty - Jumierah Village Circle. A residential community located in the heart of Dubai, offering a family-friendly, suburban lifestyle. The park city with more than 30 land-scaped parks, all the best dining, entertainment, schools, healthcare, fitness centres and more are at your fingertips, while the quiet and tranquil green space are only steps away, right in front of your residence.

This is where Meteora Developers is building some of the finest places to stay, putting you just steps from many of New Dubai's most iconic landmarks.

*Living in the
Middle of the
World's Greatest City*



VIVANTI

RESIDENCES BY METEORA

The residences at Vivanti were meticulously crafted by the designers and architects at Meteora Developers, blending minimalist design elements with a warm aesthetic and offering panoramic views of Jumeirah Village Circle on one side and the meticulously planned courtyard on the other.

SMART HOMES

AIR PURIFIED ENVIRONMENT

EV CHARGING

FULLY FITTED KITCHEN

WHITE GOODS

CONCIERGE SERVICE

DOCTOR ON CALL

PHARMACY

OUTDOOR CINEMA

CAFE

SUPERMARKET

OUTDOOR PLAY AREA

TENNIS / PADDLE COURT

EXPANSIVE LOUNGE AREA

PETS AREA

KIDS SWIMMING POOL

ADULTS SWIMMING POOL

GYM

DEDICATED RETAIL LEVEL



A state-of-the-art combination of panoramic views, exceptional architecture, gracious layouts, and hotel-style service makes Vivanti the ultimate urban residence.

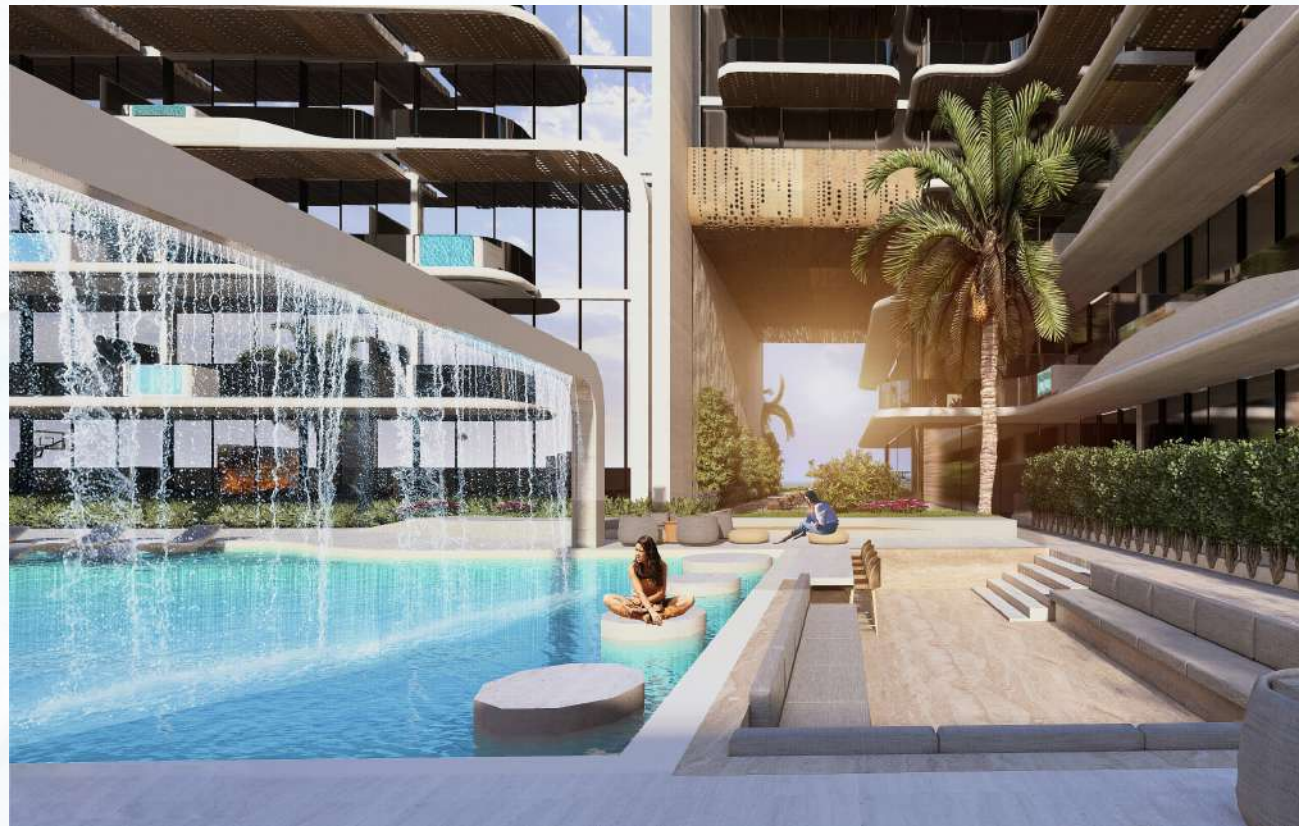
With expansive dimensions, walls of glass, and soaring ceiling heights, each home gracefully accommodates gatherings both large and small.



The courtyard at Vivanti is designed for the ultimate in relaxation and regeneration and features a 32 metre swimming pool, an outdoor cinema, mini golf, kids play area and more.



With an expansive square feet of amenities, Vivanti is a collection of incredible lifestyle amenities with the added convenience of concierge services and a full-time doorman. Vivanti offers resident's access to a landscaped podium level garden along with an outdoor children's play area and game room, all with unobstructed views of the JVC skyline.



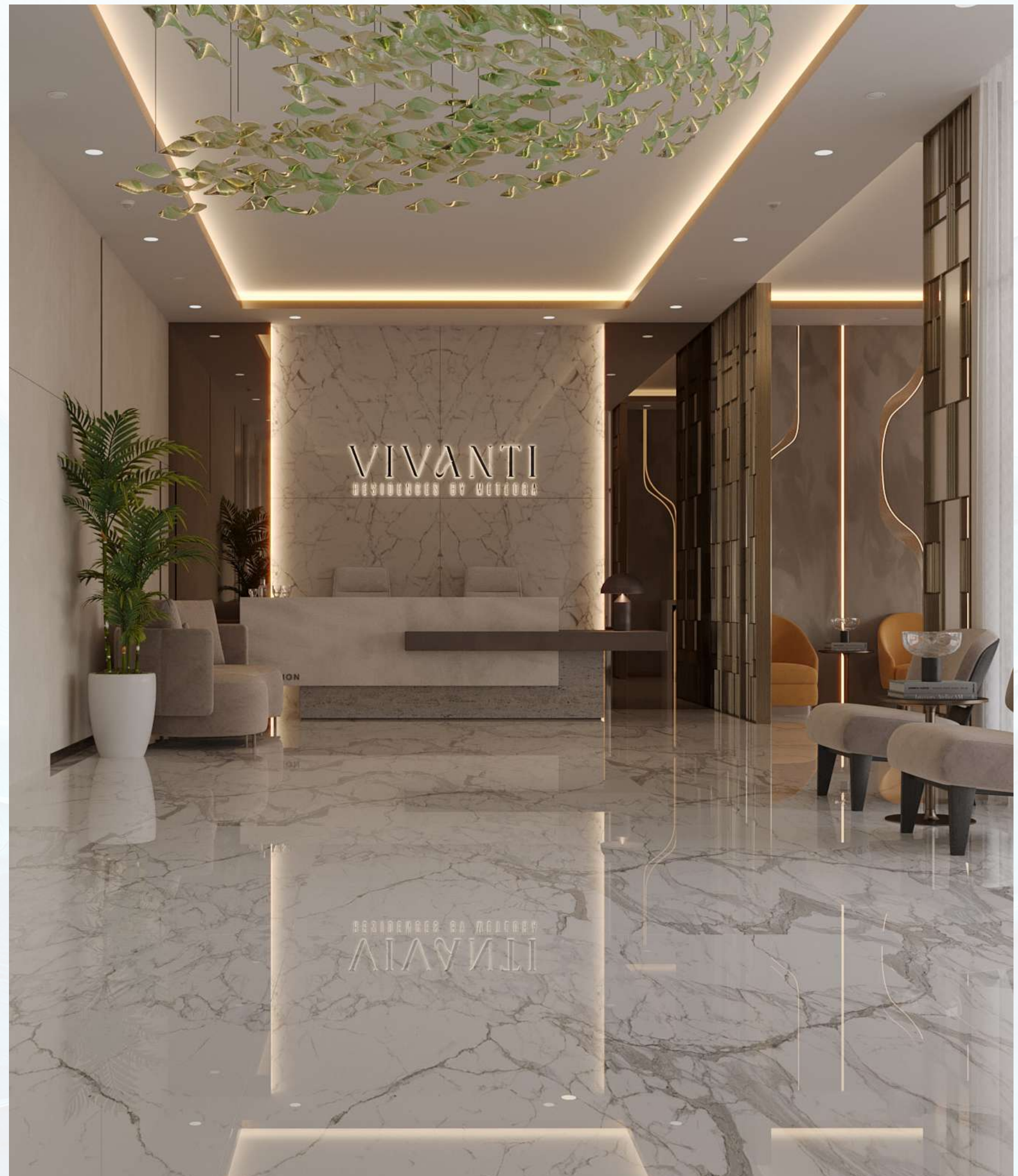
Indulge in the bliss of your private escape within these beautifully designed and spacious living spaces that offer breathtaking panoramic while you soak in the wellness from your private terrace jacuzzi.



Residences

The residences offer impressive views of the neighbourhood and landmark locations of JVC. Living rooms and bedrooms are configured to maximize the outstanding views. With an open-concept layout enhanced by floor-to-ceiling windows and stunning views in select residences, it truly feels like you're on top of the world and you are.

From sunrise, throughout the day and as the sun sets, the changing urban landscape provides a striking backdrop to daily life.







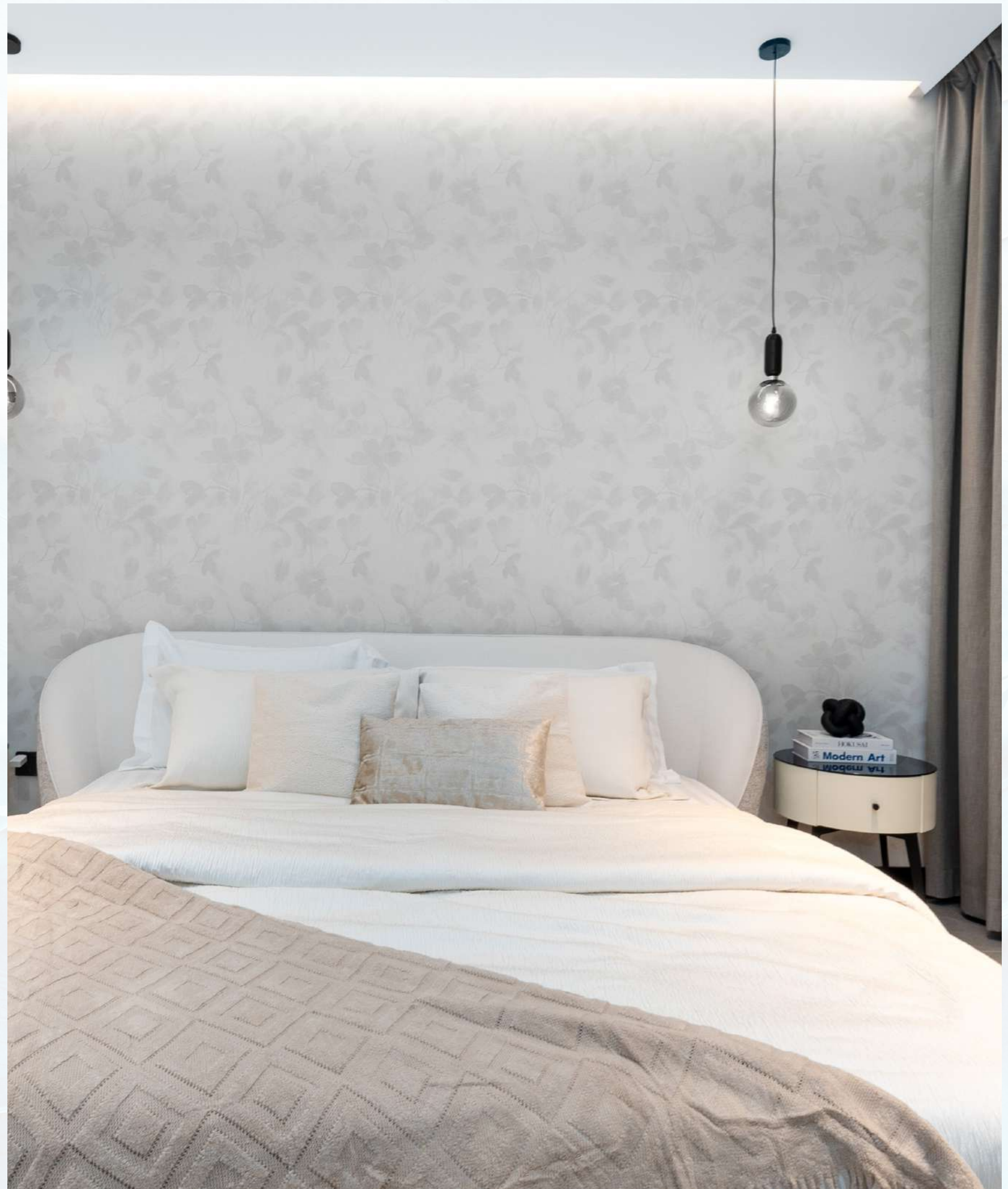
Featured: Show apartment of Vivanti Residences.
Visit the show apartment at the Meteora Sales and
Experience Centre at Jumeirah Village Circle.



















Access

In the Community

SCHOOLS

Kids World Nursery
Ladybird Nursery

HOSPITALS/ CLINICS

Magnum Family Medical Centre
Right Health Karama Medical Centre

SHOPPING

Circle Mall

SUPERMARKETS

Spinneys
Choitrams
West Zone Fresh
Aswaaq Mart
All Day MiniMart
Holiday Minimart

In the Neighbourhood

SCHOOLS

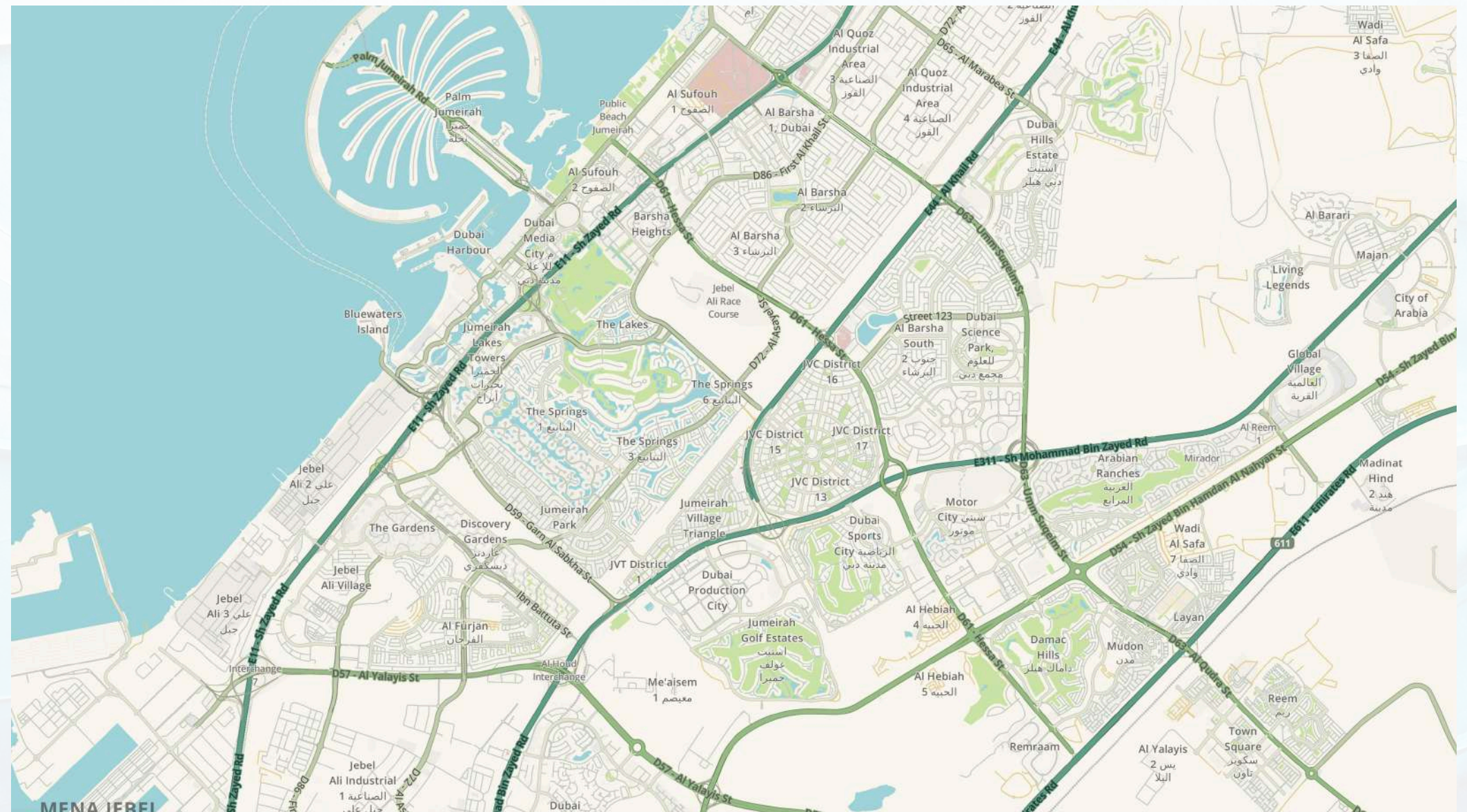
Gems United - Dubai Sports City - 5 Mins
Nord Anglia - Al Barsha South - 5 Mins
Gems World Academy - Al Barsha South - 5 Mins
Dubai British School - Emirates Hills - 7 Mins
Dubai International Academy - Emirates Hills - 7 Mins

MALLS

Al Khail Avenue Mall - JVC - 2 Mins
Mall of the Emirates - Al Barsha 1 - 15 Mins
Al Barsha Mall - Al Barsha 2 - 7 Mins
City Centre Al Barsha - Al Barsha South - 5 Mins

HOSPITALS / CLINICS

Emirates Hospital Day Surgery - Motor City - 5 Mins
Mediclinic Park View Hospital - Al Barsha South - 5 Mins
Saudi German Hospital - Al Barsha South - 5 Mins



Jumeirah Village Circle is a world within itself, but right outside, all of Dubai is at your fingertips. JVC's pivotal location makes experiencing Dubai easy. Touted as Dubai's first ever Village Neighbourhood, Jumeirah Village Circle sits next to Jumeirah Village Triangle, Al Barsha South, Dubai Sports City and Motor City - right in the heart of what is often referred to as the New Dubai, built as the ultimate landscape of society, culture and commerce.



Visit the show apartment at the Meteora Sales and Experience Centre at Jumeirah Village Circle.

A PROJECT BY METEORA DEVELOPERS

METEORA DEVELOPERS, METEORA DEVELOPERS PRESENTS, the tagline 'Step into the world of elevated Privileges' and the project names THE EAST CREST, 7 PARK CENTRAL, VITA GRANDE, PARK BOULEVARD and VIVANTI RESIDENCES are registered trademarks. All trademarks, their associated logos and brand names mentioned in this document are property of their respective owners and may not be used in connection with any product, service or solution that is not a METEORA DEVELOPER's communication and will require prior approval.

www.meteoradevelopers.com





A PROJECT BY
METEORA
DEVELOPERS