

*The 100*

---

ROYAL CREATION



A ROYAL TOUCH





# BUILDING SIZE

**WIDTH:**  
125.26m

**HEIGHT:**  
25.3M





The 100 is a luxurious building developed by “**The 100**” and is regarded as one of the most opulent structures in Meydan.





# WHY THE 100 MEYDAN?

## Royal Size

The 100 offers 35% larger living spaces than standard units.

## Royal Views

Residents will enjoy breathtaking views of the Dubai skyline.

## Royal location

The 100 provides easy access to Dubai's critical destinations via major roads.





# LOCATION & NEIGHBORHOOD



## Great Schools:

North London Collegiate School, LSG School, ICE School, Dubai International School, Hartland International School

## Easy Commute:

Convenient public transportation, including future Dubai Metro stations.

## Shopping Convenience:

Shop at Dubai Mall, Dubai Festival City Mall and Dubai Outlet Mall.

## Green Spaces:

Meydan racecourse, Meydan Cycling, and running track, District One Cycling and running track



**15 MINUTES**

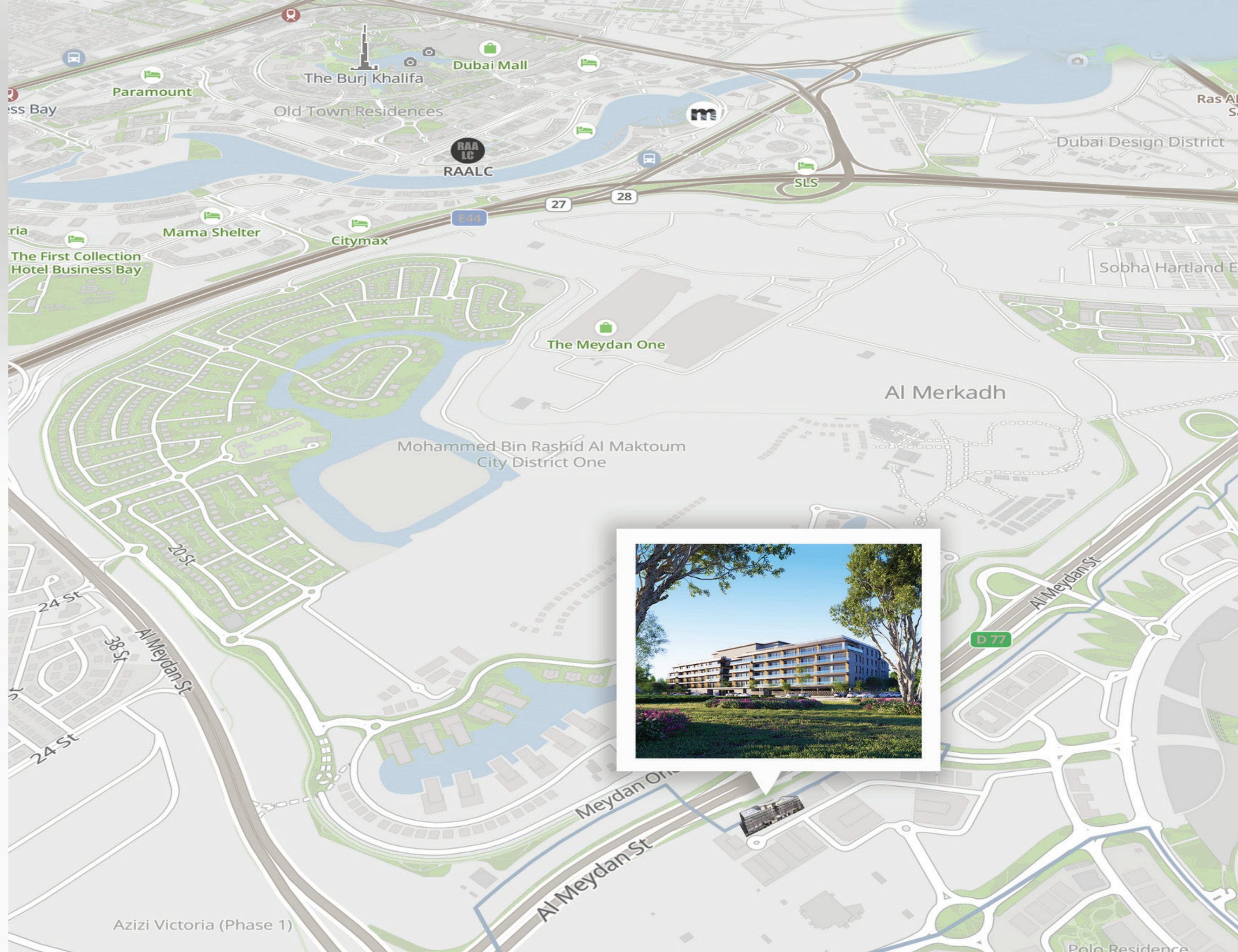
To Downtown Dubai  
Business Bay

**15 MINUTES**

To Dubai International  
Financial Centre

**15 MINUTES**

To Dubai International  
Airport





The 100 provides **153,000 sqft**  
of very generous proportioned  
living spaces.







The 100 stretches along **2 separate horizontal sections** for quality of living.







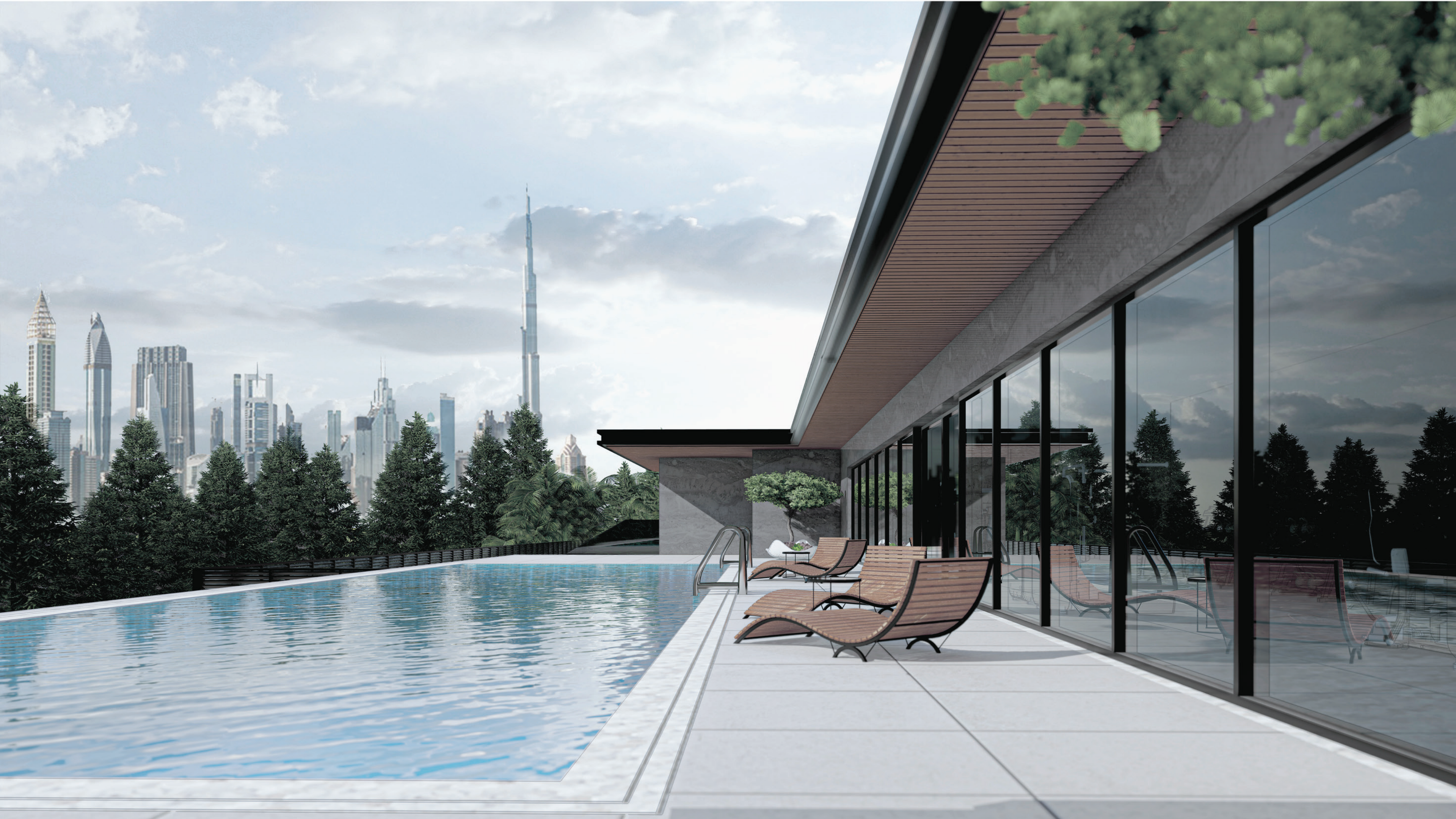
Whether enjoying the Dubai skyline or the Meydan view, every resident will enjoy a calm oasis in the middle of the city.





## AMENITIES









## **Royal living**

The 100 is the only luxury development in the Meydan area, providing a premium lifestyle.













A tranquil yoga space designed in a minimalist style and bathed in warm lighting. The serene ambiance, accentuated by views of nature and the city skyline, fosters deep relaxation.



Inviting relaxation, an artfully  
crafted sauna, and steam room will  
provide a refreshing experience  
after a long day.





# INTERIOR SHOTS



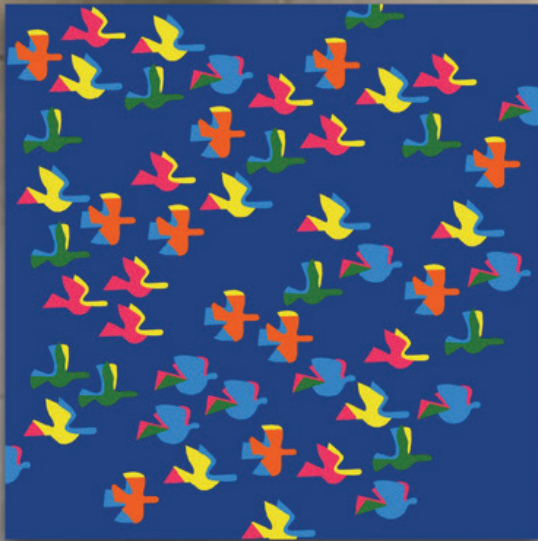




**PAINTINGS** *BY NASSIM NASR*

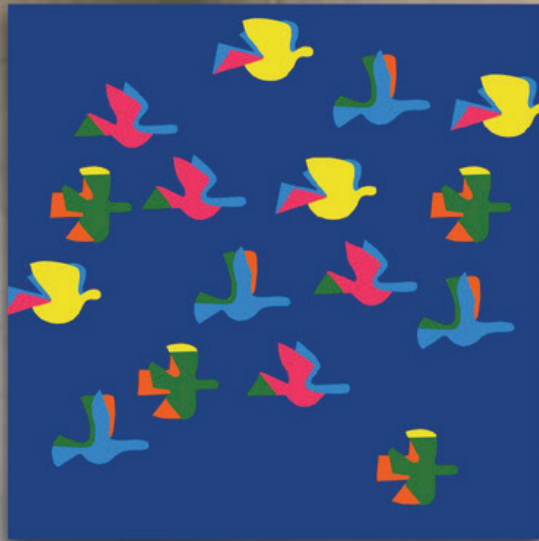
**One Bedroom**

54 Houses - 54 Birds



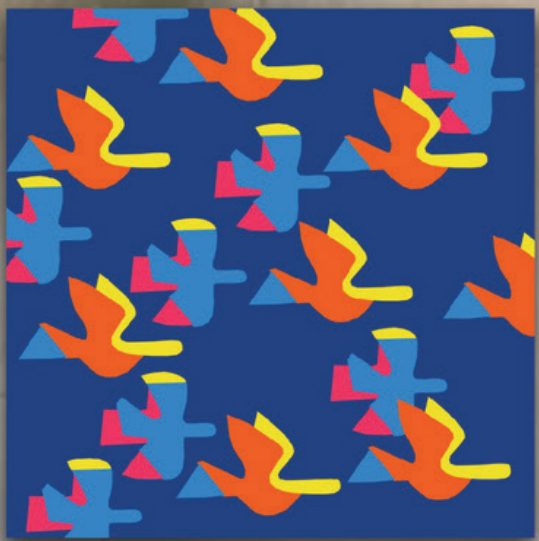
**Two bedroom**

16 Houses - 16 Birds



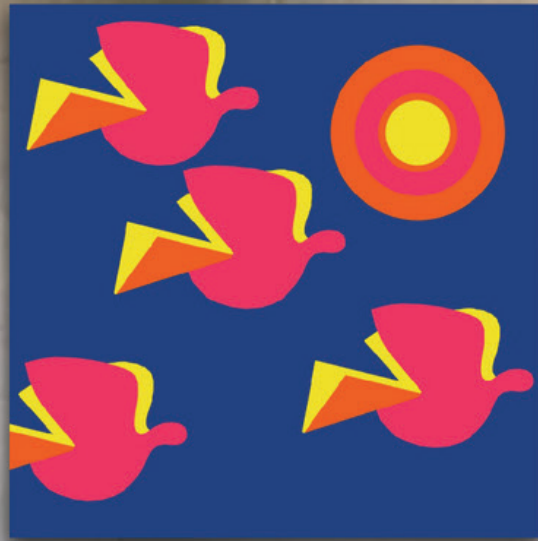
**Three bedroom**

16 Houses - 16 Birds



**Penthouse**

4 Houses - 4 Birds







**Nassim Nasr**

Exclusively crafted for "The 100 Meydan," Nassim Nasr has created a masterpiece. He is renowned for his unique style of Expressive Color Minimalism, which is characterized by a fusion of vibrant color palettes, emotional expression, and restrained simplicity.





More than just an entrance, this lobby is a canvas come to life. Cool gray walls rise towards a 4.5-meter ceiling, while unique art pieces evoke emotion.



A modern, open-plan living area with a sleek kitchen, central island, stylish pendant lights, and large windows for a cozy and inviting atmosphere.







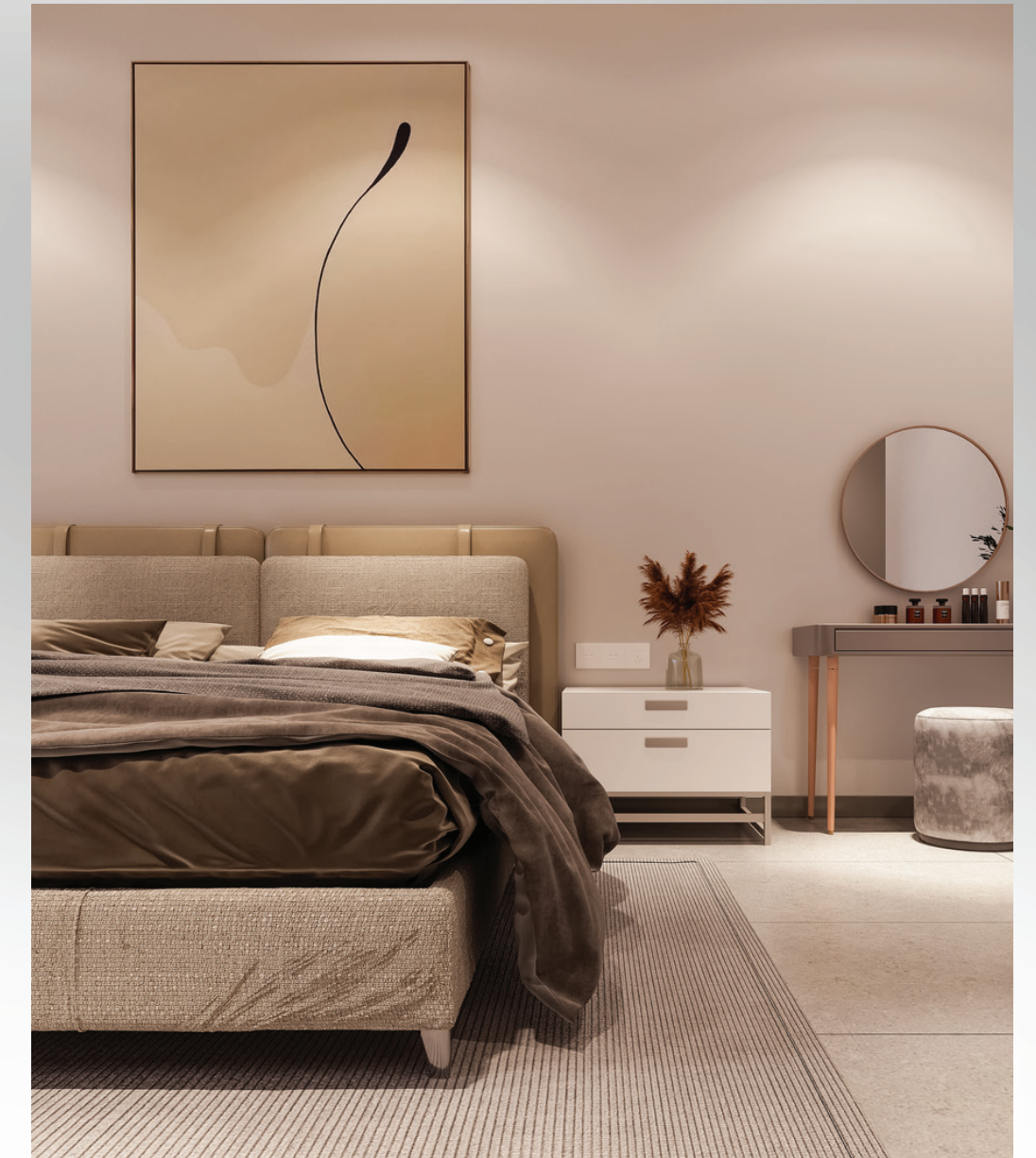












A sleek, modern bedroom with warm lighting, perfect for a restful sleep.



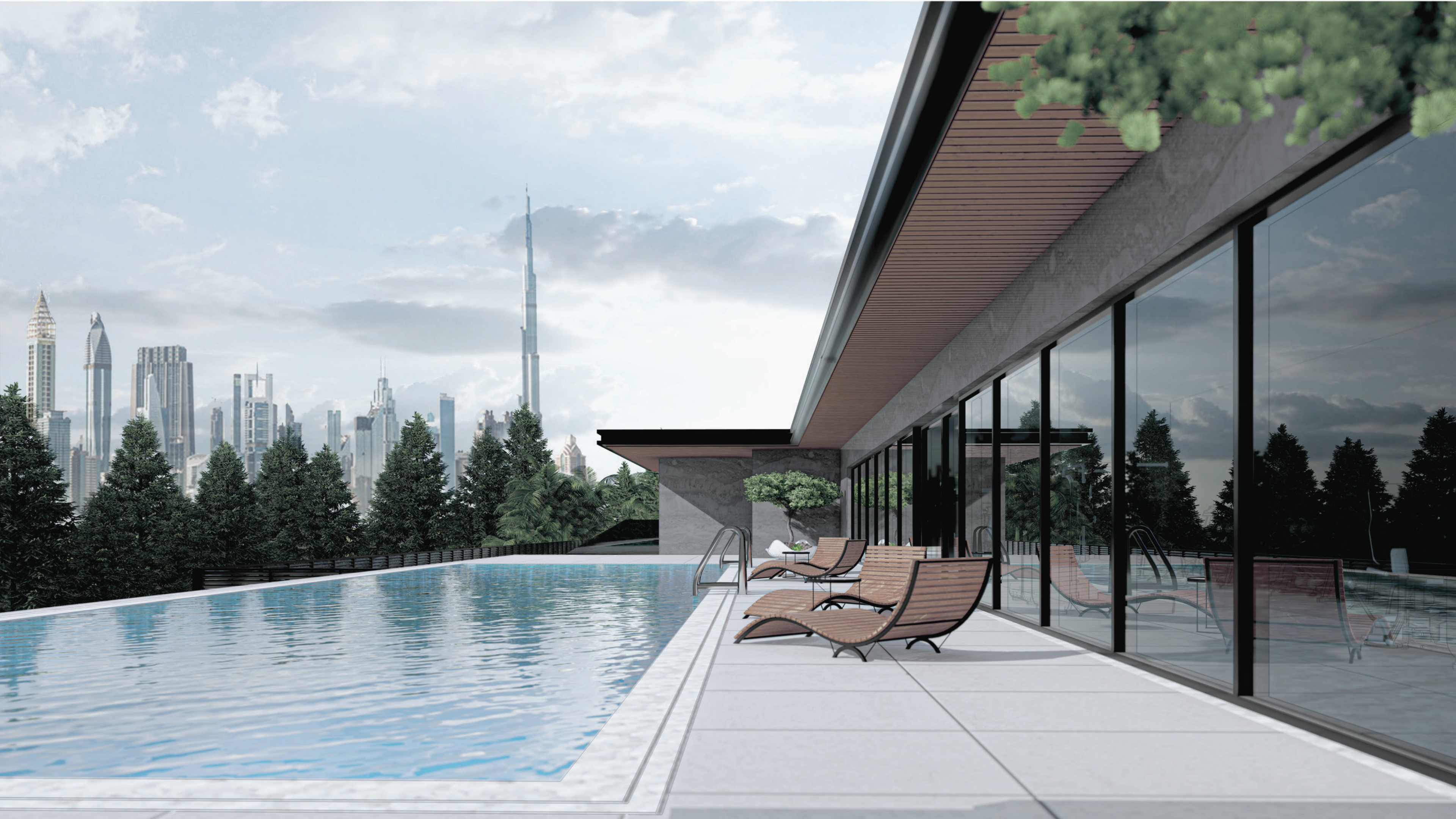


Experience "**The 100**" brand's premium fixtures in our thoughtfully designed bathroom, featuring integrated mirror lighting, sleek black stainless steel faucets, and captivating artistic illumination for your morning ritual.



## EXTERIOR SHOTS







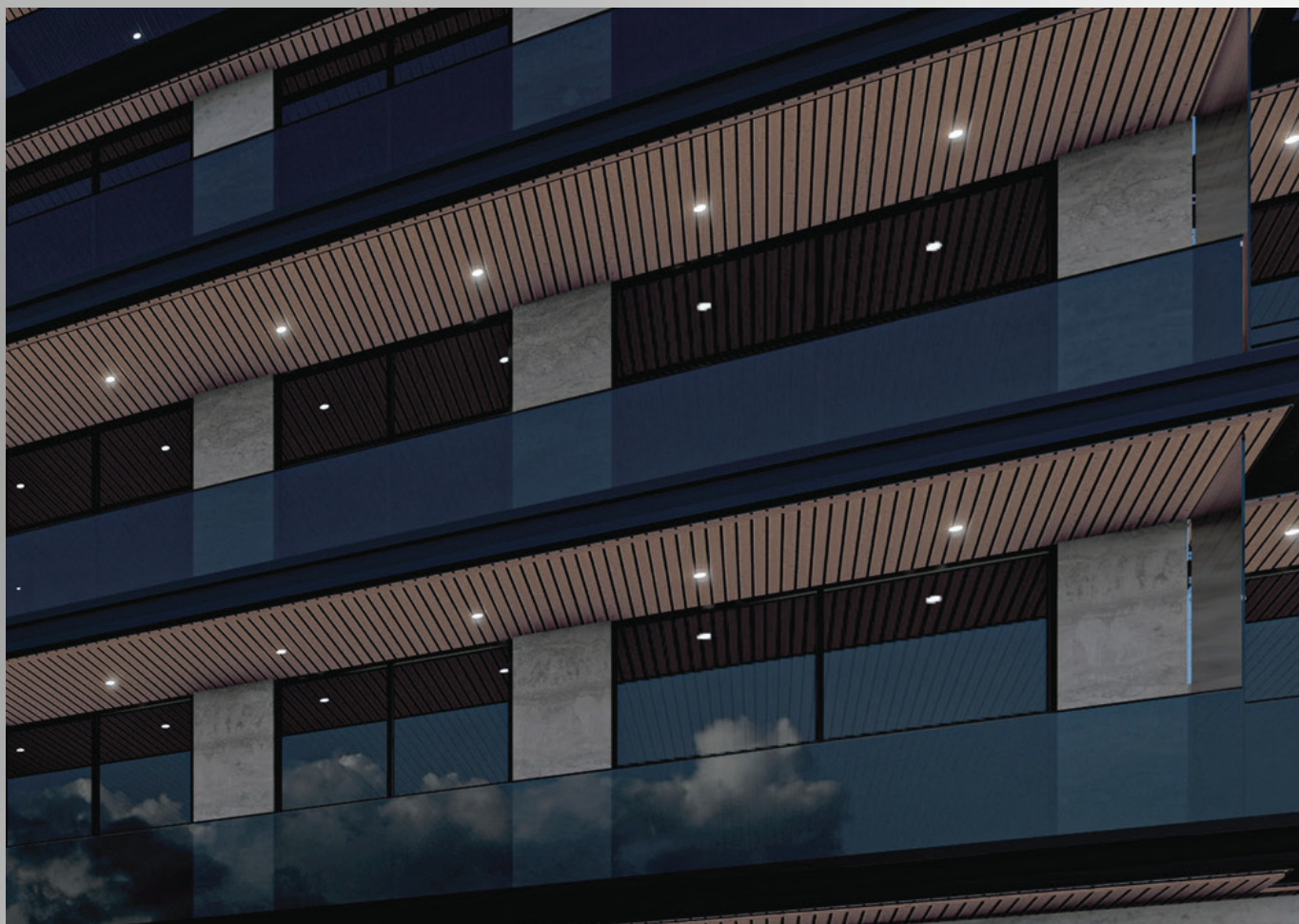






The 100





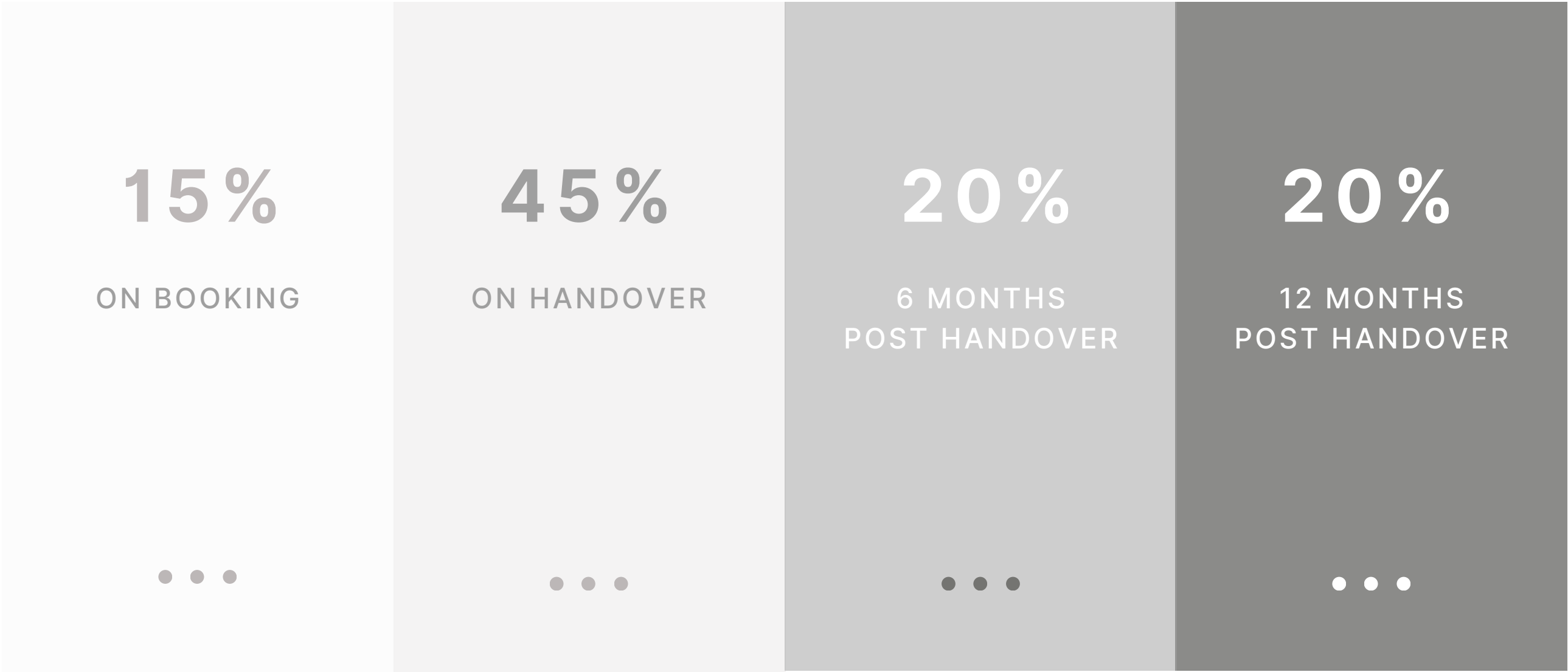


## PAYMENT PLAN & STARTING PRICES



PAYMENT PLAN

FULL  
DLD  
WAIVER





PROJECT  
HANDOVER

**Q3 - 2024**

STARTING  
PRICES

**AED 1.74M**  
APARTMENTS

**AED 10.5M**  
PENTHOUSE

