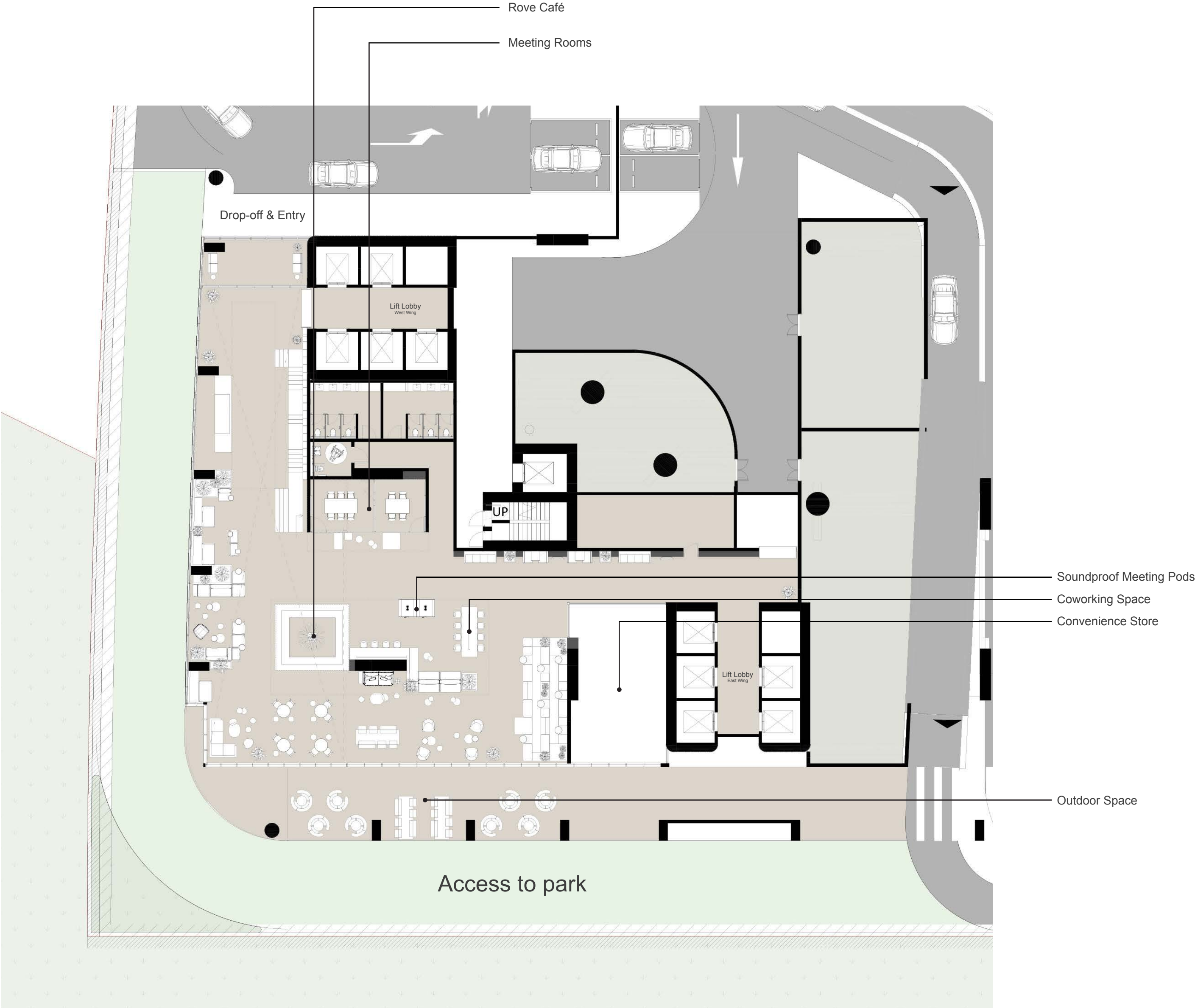


GROUND LEVEL

Total Area: 16,933Sqft



The ROVE logos, trade-marks and trade names (the "ROVE Marks") published in this publication are owned by or licensed to Rove Hotels LLC or its Group Companies (collectively referred to as "ROVE"). The use of the ROVE Marks by IRTH Signature Development LLC (the "Company") has been authorised by ROVE under license, solely in relation to the intention of ROVE to supervise the operation of the "ROVE Home Marasi Drive, Dubai" development located in Business Bay, Dubai (the "Building") and in respect of the marketing and sale of the residences within the Building (the "Residences"). The Building and the Residences are not owned, developed or sold by ROVE. The Company, which is not an affiliate of ROVE, is responsible for the marketing and sales of the Residences. Accordingly, ROVE will not be responsible for: (a) any advertising claims or representations in this publication or otherwise made by the Company; (b) any content in this publication; (c) any marketing and/or data collection practices carried out by the Company; (d) any dealings or communications that you have with the Company; and (e) any infringement of third party rights or local laws in connection with this publication. ROVE strongly recommends that you confirm any information appearing in this publication and consult your professional advisors before proceeding with any related transaction. To the maximum extent permitted by law, ROVE will not be liable for any form of loss or damage arising out of or in connection with this publication, the Building, the Residences, or any dealings or communications that you have with the Company.

All images used are for illustrative purposes only and do not represent the actual size, features, specifications, fittings, and furnishings. The developer reserves the right to make revisions / alterations, at its absolute discretion, without any liability whatsoever.

PODIUM LEVEL INDOOR

Total Area: 13,361Sqft



The ROVE logos, trade-marks and trade names (the "ROVE Marks") published in this publication are owned by or licensed to Rove Hotels LLC or its Group Companies (collectively referred to as "ROVE"). The use of the ROVE Marks by IRTH Signature Development LLC (the "Company") has been authorised by ROVE under license, solely in relation to the intention of ROVE to supervise the operation of the "ROVE Home Marasi Drive, Dubai" development located in Business Bay, Dubai (the "Building") and in respect of the marketing and sale of the residences within the Building (the "Residences"). The Building and the Residences are not owned, developed or sold by ROVE. The Company, which is not an affiliate of ROVE, is responsible for the marketing and sales of the Residences. Accordingly, ROVE will not be responsible for: (a) any advertising claims or representations in this publication or otherwise made by the Company; (b) any content in this publication; (c) any marketing and/or data collection practices carried out by the Company; (d) any dealings or communications that you have with the Company; and (e) any infringement of third party rights or local laws in connection with this publication. ROVE strongly recommends that you confirm any information appearing in this publication and consult your professional advisors before proceeding with any related transaction. To the maximum extent permitted by law, ROVE will not be liable for any form of loss or damage arising out of or in connection with this publication, the Building, the Residences, or any dealings or communications that you have with the Company.

All images used are for illustrative purposes only and do not represent the actual size, features, specifications, fittings, and furnishings. The developer reserves the right to make revisions / alterations, at its absolute discretion, without any liability whatsoever.

PODIUM LEVEL OUTDOOR

Total Area: 38,750 Sqft



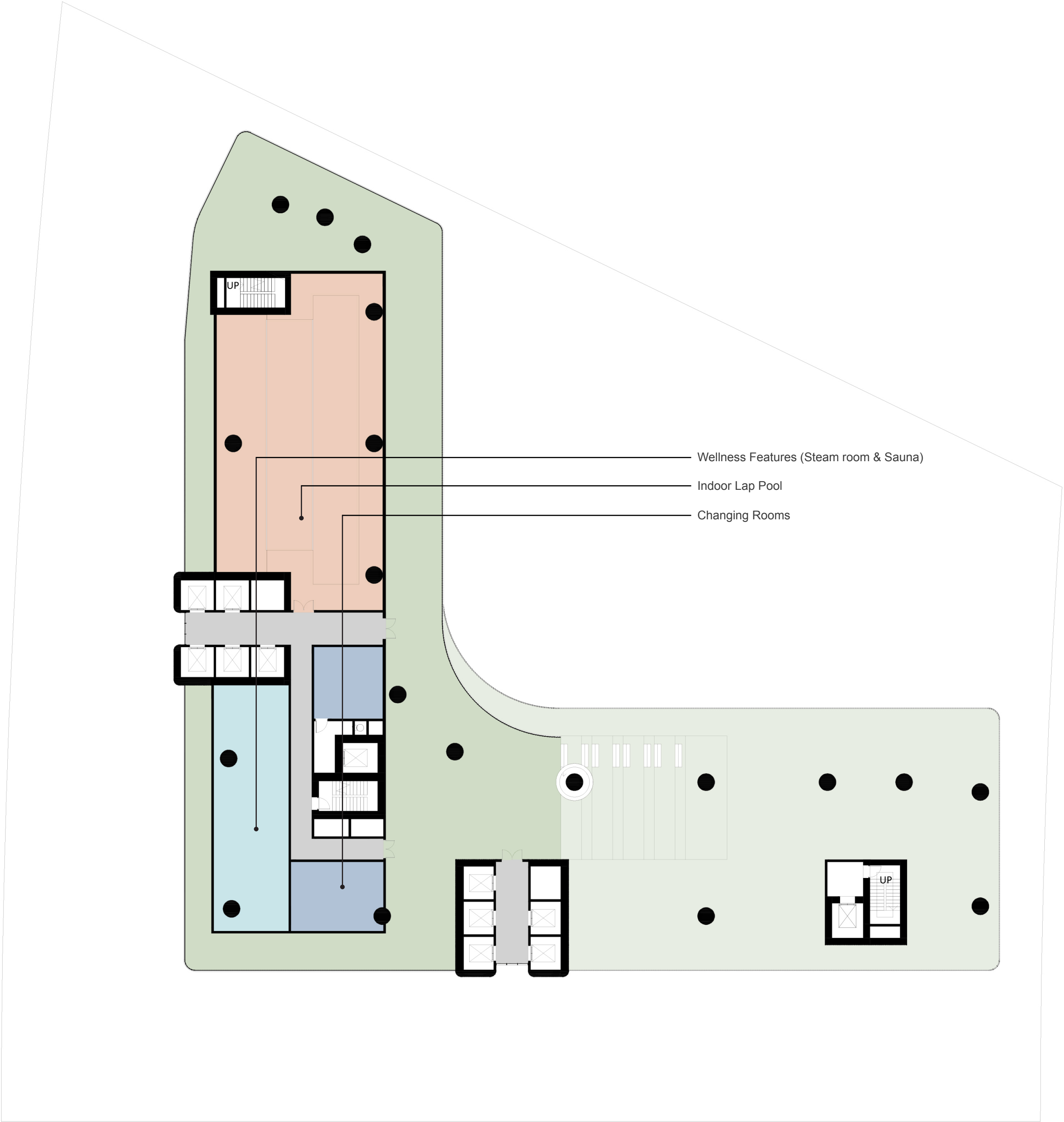
The ROVE logos, trade-marks and trade names (the "ROVE Marks") published in this publication are owned by or licensed to Rove Hotels LLC or its Group Companies (collectively referred to as "ROVE"). The use of the ROVE Marks by IRTS Signature Development LLC (the "Company") has been authorised by ROVE under license, solely in relation to the intention of ROVE to supervise the operation of the "ROVE Home Marasi Drive, Dubai" development located in Business Bay, Dubai (the "Building") and in respect of the marketing and sale of the residences within the Building (the "Residences"). The Building and the Residences are not owned, developed or sold by ROVE. The Company, which is not an affiliate of ROVE, is responsible for the marketing and sales of the Residences. Accordingly, ROVE will not be responsible for: (a) any advertising claims or representations in this publication or otherwise made by the Company; (b) any content in this publication; (c) any marketing and/or data collection practices carried out by the Company; (d) any dealings or communications that you have with the Company; and (e) any infringement of third party rights or local laws in connection with this publication. ROVE strongly recommends that you confirm any information appearing in this publication and consult your professional advisors before proceeding with any related transaction. To the maximum extent permitted by law, ROVE will not be liable for any form of loss or damage arising out of or in connection with this publication, the Building, the Residences, or any dealings or communications that you have with the Company.

All images used are for illustrative purposes only and do not represent the actual size, features, specifications, fittings, and furnishings. The developer reserves the right to make revisions / alterations, at its absolute discretion, without any liability whatsoever.

LEVELS 22 & 23 SKY GARDEN

INDOOR

Total Area: 13,361 Sqft



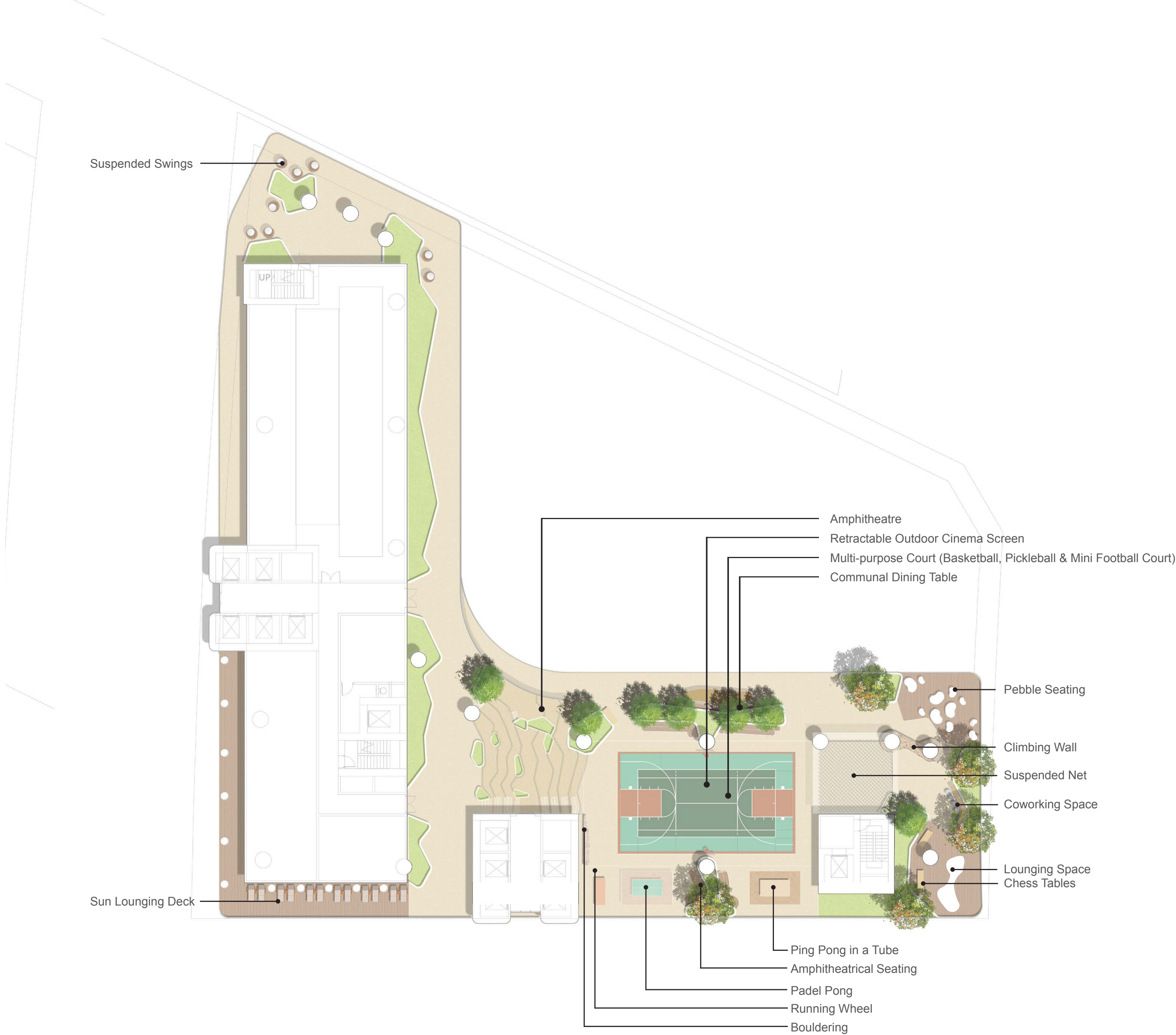
The ROVE logos, trade-marks and trade names (the "ROVE Marks") published in this publication are owned by or licensed to Rove Hotels LLC or its Group Companies (collectively referred to as "ROVE"). The use of the ROVE Marks by IRTS Signature Development LLC (the "Company") has been authorised by ROVE under license, solely in relation to the intention of ROVE to supervise the operation of the "ROVE Home Marasi Drive, Dubai" development located in Business Bay, Dubai (the "Building") and in respect of the marketing and sale of the residences within the Building (the "Residences"). The Building and the Residences are not owned, developed or sold by ROVE. The Company, which is not an affiliate of ROVE, is responsible for the marketing and sales of the Residences. Accordingly, ROVE will not be responsible for: (a) any advertising claims or representations in this publication or otherwise made by the Company; (b) any content in this publication; (c) any marketing and/or data collection practices carried out by the Company; (d) any dealings or communications that you have with the Company; and (e) any infringement of third party rights or local laws in connection with this publication. ROVE strongly recommends that you confirm any information appearing in this publication and consult your professional advisors before proceeding with any related transaction. To the maximum extent permitted by law, ROVE will not be liable for any form of loss or damage arising out of or in connection with this publication, the Building, the Residences, or any dealings or communications that you have with the Company.

All images used are for illustrative purposes only and do not represent the actual size, features, specifications, fittings, and furnishings. The developer reserves the right to make revisions / alterations, at its absolute discretion, without any liability whatsoever.

LEVELS 22 & 23 SKY GARDEN

OUTDOOR

Total Area: 15,608 Sqft



The ROVE logos, trade-marks and trade names (the "ROVE Marks") published in this publication are owned by or licensed to Rove Hotels LLC or its Group Companies (collectively referred to as "ROVE"). The use of the ROVE Marks by IRTS Signature Development LLC (the "Company") has been authorised by ROVE under license, solely in relation to the intention of ROVE to supervise the operation of the "ROVE Home Marasi Drive, Dubai" development located in Business Bay, Dubai (the "Building") and in respect of the marketing and sale of the residences within the Building (the "Residences"). The Building and the Residences are not owned, developed or sold by ROVE. The Company, which is not an affiliate of ROVE, is responsible for the marketing and sales of the Residences. Accordingly, ROVE will not be responsible for: (a) any advertising claims or representations in this publication or otherwise made by the Company; (b) any content in this publication; (c) any marketing and/or data collection practices carried out by the Company; (d) any dealings or communications that you have with the Company; and (e) any infringement of third party rights or local laws in connection with this publication. ROVE strongly recommends that you confirm any information appearing in this publication and consult your professional advisors before proceeding with any related transaction. To the maximum extent permitted by law, ROVE will not be liable for any form of loss or damage arising out of or in connection with this publication, the Building, the Residences, or any dealings or communications that you have with the Company.

All images used are for illustrative purposes only and do not represent the actual size, features, specifications, fittings, and furnishings. The developer reserves the right to make revisions / alterations, at its absolute discretion, without any liability whatsoever.

ROOFTOP

Total Area: 15,231 Sqft



The ROVE logos, trade-marks and trade names (the "ROVE Marks") published in this publication are owned by or licensed to Rove Hotels LLC or its Group Companies (collectively referred to as "ROVE"). The use of the ROVE Marks by IRTH Signature Development LLC (the "Company") has been authorised by ROVE under license, solely in relation to the intention of ROVE to supervise the operation of the "ROVE Home Marasi Drive, Dubai" development located in Business Bay, Dubai (the "Building") and in respect of the marketing and sale of the residences within the Building (the "Residences"). The Building and the Residences are not owned, developed or sold by ROVE. The Company, which is not an affiliate of ROVE, is responsible for the marketing and sales of the Residences. Accordingly, ROVE will not be responsible for: (a) any advertising claims or representations in this publication or otherwise made by the Company; (b) any content in this publication; (c) any marketing and/or data collection practices carried out by the Company; (d) any dealings or communications that you have with the Company; and (e) any infringement of third party rights or local laws in connection with this publication. ROVE strongly recommends that you confirm any information appearing in this publication and consult your professional advisors before proceeding with any related transaction. To the maximum extent permitted by law, ROVE will not be liable for any form of loss or damage arising out of or in connection with this publication, the Building, the Residences, or any dealings or communications that you have with the Company.

All images used are for illustrative purposes only and do not represent the actual size, features, specifications, fittings, and furnishings. The developer reserves the right to make revisions / alterations, at its absolute discretion, without any liability whatsoever.

FLOOR PLANS



The ROVE logos, trade-marks and trade names (the «ROVE Marks») published in this publication are owned by or licensed to Rove Hotels LLC or its Group Companies (collectively referred to as «ROVE»). The use of the ROVE Marks by IRTH Signature Development LLC (the «Company») has been authorised by ROVE under license, solely in relation to the intention of ROVE to supervise the operation of the «ROVE Home Marasi Drive, Dubai» development located in Business Bay, Dubai (the «Building») and in respect of the marketing and sale of the residences within the Building (the "Residences"). The Building and the Residences are not owned, developed or sold by ROVE. The Company, which is not an affiliate of ROVE, is responsible for the marketing and sales of the Residences. Accordingly, ROVE will not be responsible for: (a) any advertising claims or representations in this publication or otherwise made by the Company; (b) any content in this publication; (c) any marketing and/or data collection practices carried out by the Company; (d) any dealings or communications that you have with the Company; and (e) any infringement of third party rights or local laws in connection with this publication. ROVE strongly recommends that you confirm any information appearing in this publication and consult your professional advisors before proceeding with any related transaction. To the maximum extent permitted by law, ROVE will not be liable for any form of loss or damage arising out of or in connection with this publication, the Building, the Residences, or any dealings or communications that you have with the Company.

All images used are for illustrative purposes only and do not represent the actual size, features, specifications, fittings, and furnishings. The developer reserves the right to make revisions / alterations, at its absolute discretion, without any liability whatsoever.

TIER 1

TYPICAL FLOOR

5TH TO 21ST

UNITS PER FLOOR

Studio Flex	6	Units
Studio ²	10	Units
1 Bedroom ²	14	Units
2 Bedroom ²	3	Units



LEGEND

- STUDIO FLEX
- STUDIO²
- 1 BEDROOM²
- 2 BEDROOM² TYPE A
- 2 BEDROOM² TYPE B

The ROVE logos, trade-marks and trade names (the "ROVE Marks") published in this publication are owned by or licensed to Rove Hotels LLC or its Group Companies (collectively referred to as "ROVE"). The use of the ROVE Marks by IRT Signature Development LLC (the "Company") has been authorised by ROVE under license, solely in relation to the intention of ROVE to supervise the operation of the "ROVE Home Marasi Drive, Dubai" development located in Business Bay, Dubai (the "Building") and in respect of the marketing and sale of the residences within the Building (the "Residences"). The Building and the Residences are not owned, developed or sold by ROVE. The Company, which is not an affiliate of ROVE, is responsible for the marketing and sales of the Residences. Accordingly, ROVE will not be responsible for: (a) any advertising claims or representations in this publication or otherwise made by the Company; (b) any content in this publication; (c) any marketing and/or data collection practices carried out by the Company; (d) any dealings or communications that you have with the Company; and (e) any infringement of third party rights or local laws in connection with this publication. ROVE strongly recommends that you confirm any information appearing in this publication and consult your professional advisors before proceeding with any related transaction. To the maximum extent permitted by law, ROVE will not be liable for any form of loss or damage arising out of or in connection with this publication, the Building, the Residences, or any dealings or communications that you have with the Company.

All images used are for illustrative purposes only and do not represent the actual size, features, specifications, fittings, and furnishings. The developer reserves the right to make revisions / alterations, at its absolute discretion, without any liability whatsoever.

TIER 2 TYPICAL FLOOR 24TH TO 31ST

UNITS PER FLOOR

Studio ²	12	Units
1 Bedroom ²	16	Units
2 Bedroom ²	3	Units



LEGEND

- STUDIO²
- 1 BEDROOM²
- 2 BEDROOM² TYPE A
- 2 BEDROOM² TYPE B

The ROVE logos, trade-marks and trade names (the "ROVE Marks") published in this publication are owned by or licensed to Rove Hotels LLC or its Group Companies (collectively referred to as "ROVE"). The use of the ROVE Marks by IRT Signature Development LLC (the "Company") has been authorised by ROVE under license, solely in relation to the intention of ROVE to supervise the operation of the "ROVE Home Marasi Drive, Dubai" development located in Business Bay, Dubai (the "Building") and in respect of the marketing and sale of the residences within the Building (the "Residences"). The Building and the Residences are not owned, developed or sold by ROVE. The Company, which is not an affiliate of ROVE, is responsible for the marketing and sales of the Residences. Accordingly, ROVE will not be responsible for: (a) any advertising claims or representations in this publication or otherwise made by the Company; (b) any content in this publication; (c) any marketing and/or data collection practices carried out by the Company; (d) any dealings or communications that you have with the Company; and (e) any infringement of third party rights or local laws in connection with this publication. ROVE strongly recommends that you confirm any information appearing in this publication and consult your professional advisors before proceeding with any related transaction. To the maximum extent permitted by law, ROVE will not be liable for any form of loss or damage arising out of or in connection with this publication, the Building, the Residences, or any dealings or communications that you have with the Company.

All images used are for illustrative purposes only and do not represent the actual size, features, specifications, fittings, and furnishings. The developer reserves the right to make revisions / alterations, at its absolute discretion, without any liability whatsoever.

UNIT PLANS



The ROVE logos, trade-marks and trade names (the «ROVE Marks») published in this publication are owned by or licensed to Rove Hotels LLC or its Group Companies (collectively referred to as «ROVE»). The use of the ROVE Marks by IRT Signature Development LLC (the «Company») has been authorised by ROVE under license, solely in relation to the intention of ROVE to supervise the operation of the «ROVE Home Marasi Drive, Dubai» development located in Business Bay, Dubai (the «Building») and in respect of the marketing and sale of the residences within the Building (the «Residences»). The Building and the Residences are not owned, developed or sold by ROVE. The Company, which is not an affiliate of ROVE, is responsible for the marketing and sales of the Residences. Accordingly, ROVE will not be responsible for: (a) any advertising claims or representations in this publication or otherwise made by the Company; (b) any content in this publication; (c) any marketing and/or data collection practices carried out by the Company; (d) any dealings or communications that you have with the Company; and (e) any infringement of third party rights or local laws in connection with this publication. ROVE strongly recommends that you confirm any information appearing in this publication and consult your professional advisors before proceeding with any related transaction. To the maximum extent permitted by law, ROVE will not be liable for any form of loss or damage arising out of or in connection with this publication, the Building, the Residences, or any dealings or communications that you have with the Company.

All images used are for illustrative purposes only and do not represent the actual size, features, specifications, fittings, and furnishings. The developer reserves the right to make revisions / alterations, at its absolute discretion, without any liability whatsoever.

STUDIO FLEX

- Legend
1.

Entrance
2.

Kitchen
1.80m X 3.00m
3.

Living Room & Bedroom
3.50m X 3.80m
4.

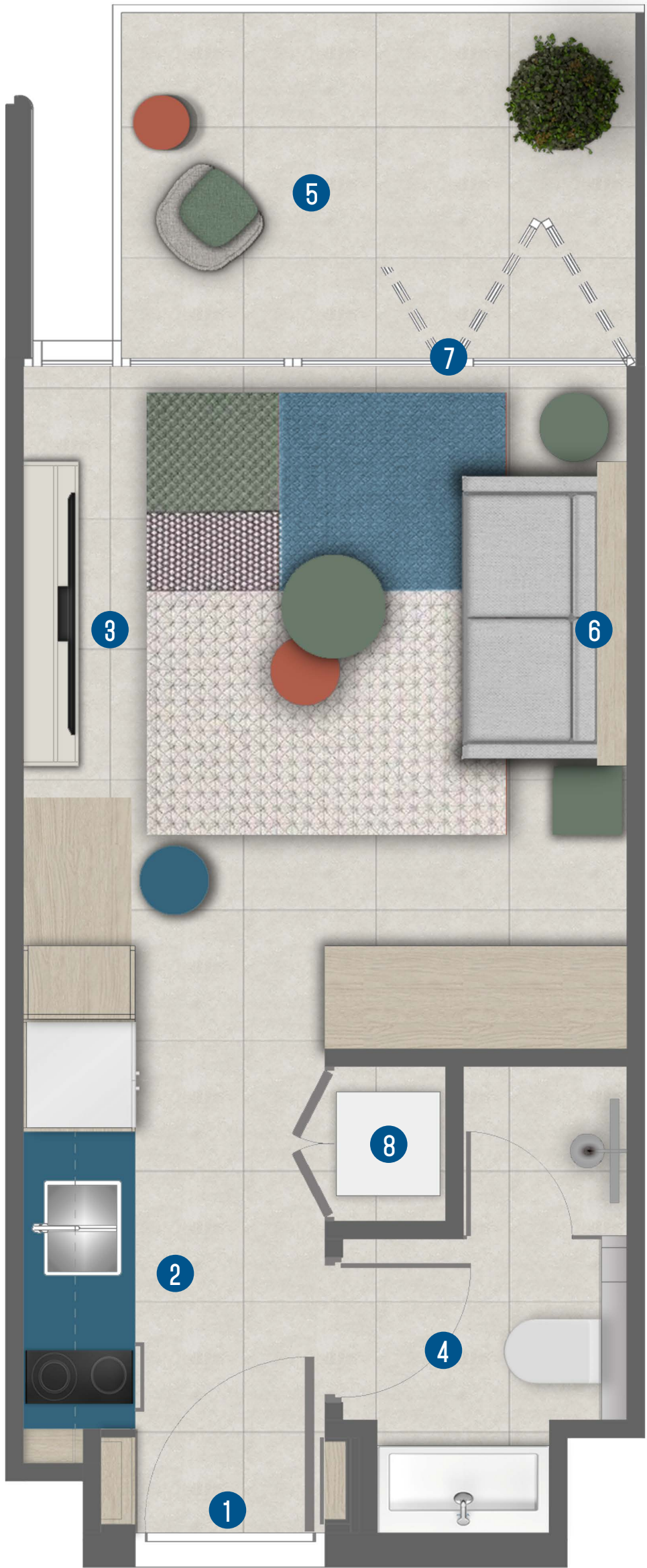
Bathroom
1.70m X 2.75m
5.

Balcony
3.00m X 2.05m
6.

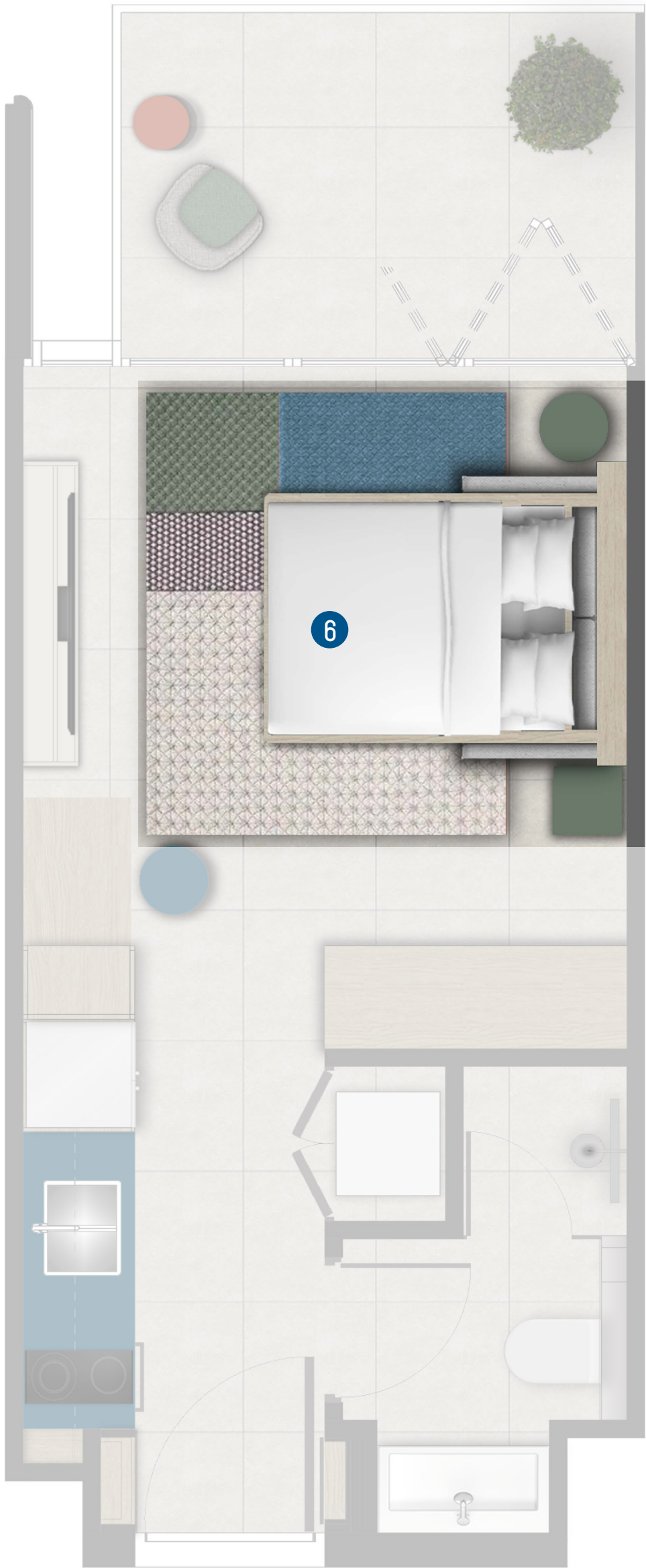
ORI Cloud Bed
7.

Bi-fold Glass Doors
8.

Laundry



ORI Cloud Bed Up



ORI Cloud Bed Down

LEVELS 5-21



STUDIO FLEX		SQFT
INTERNAL AREA		273-297
BALCONY AREA		68-72
TOTAL AREA		341-366

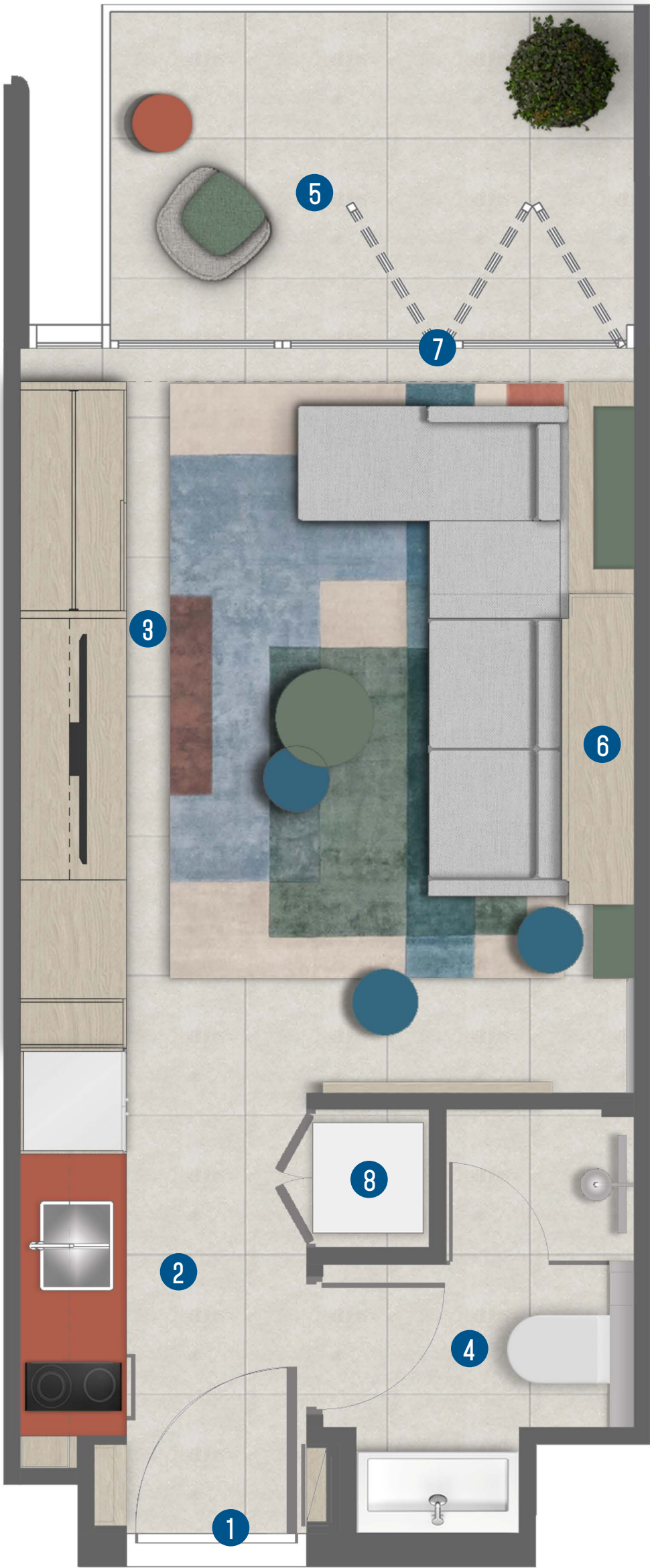
The ROVE logos, trade-marks and trade names (the «ROVE Marks») published in this publication are owned by or licensed to Rove Hotels LLC or its Group Companies (collectively referred to as «ROVE»). The use of the ROVE Marks by IRTH Signature Development LLC (the «Company») has been authorised by ROVE under license, solely in relation to the intention of ROVE to supervise the operation of the «ROVE Home Marasi Drive, Dubai» development located in Business Bay, Dubai (the «Building») and in respect of the marketing and sale of the residences within the Building (the «Residences»). The Building and the Residences are not owned, developed or sold by ROVE. The Company, which is not an affiliate of ROVE, is responsible for the marketing and sales of the Residences. Accordingly, ROVE will not be responsible for: (a) any advertising claims or representations in this publication or otherwise made by the Company; (b) any content in this publication; (c) any marketing and/or data collection practices carried out by the Company; (d) any dealings or communications that you have with the Company; and (e) any infringement of third party rights or local laws in connection with this publication. ROVE strongly recommends that you confirm any information appearing in this publication and consult your professional advisors before proceeding with any related transaction. To the maximum extent permitted by law, ROVE will not be liable for any form of loss or damage arising out of or in connection with this publication, the Building, the Residences, or any dealings or communications that you have with the Company.

All images used are for illustrative purposes only and do not represent the actual size, features, specifications, fittings, and furnishings. The developer reserves the right to make revisions / alterations, at its absolute discretion, without any liability whatsoever.

STUDIO ²

Legend

- 1. Entrance
- 2. Kitchen
1.80m X 3.00m
- 3. Living Room & Bedroom
3.75m X 4.25m
- 4. Bathroom
1.95m X 2.65m
- 5. Balcony
3.25m X 2.15m
- 6. Foldable Bed
- 7. Bi-fold Glass Doors
- 8. Laundry



Folded Layout



Unfolded Layout

LEVELS 5-21



LEVELS 24-31



STUDIO ²		SQFT
INTERNAL AREA		309-339
BALCONY AREA		78-81
TOTAL AREA		386-416

The ROVE logos, trade-marks and trade names (the «ROVE Marks») published in this publication are owned by or licensed to Rove Hotels LLC or its Group Companies (collectively referred to as «ROVE»). The use of the ROVE Marks by IRTH Signature Development LLC (the «Company») has been authorised by ROVE under license, solely in relation to the intention of ROVE to supervise the operation of the «ROVE Home Marasi Drive, Dubai» development located in Business Bay, Dubai (the «Building») and in respect of the marketing and sale of the residences within the Building (the «Residences»). The Building and the Residences are not owned, developed or sold by ROVE. The Company, which is not an affiliate of ROVE, is responsible for the marketing and sales of the Residences. Accordingly, ROVE will not be responsible for: (a) any advertising claims or representations in this publication or otherwise made by the Company; (b) any content in this publication; (c) any marketing and/or data collection practices carried out by the Company; (d) any dealings or communications that you have with the Company; and (e) any infringement of third party rights or local laws in connection with this publication. ROVE strongly recommends that you confirm any information appearing in this publication and consult your professional advisors before proceeding with any related transaction. To the maximum extent permitted by law, ROVE will not be liable for any form of loss or damage arising out of or in connection with this publication, the Building, the Residences, or any dealings or communications that you have with the Company.

All images used are for illustrative purposes only and do not represent the actual size, features, specifications, fittings, and furnishings. The developer reserves the right to make revisions / alterations, at its absolute discretion, without any liability whatsoever.

1 BEDROOM² TYPE A

Legend

- 1. Entrance
- 2. Kitchen & Dining Area
3.225m X 3.35m
- 3. Bedroom
3.10m X 4.70m
- 4. Bathroom
3.325m X 2.225m
- 5. Living Room
3.15m X 3.60m
- 6. Balcony
6.95m X 1.75m
- 7. Foldable Bed
- 8. Laundry
- 9. Bi-fold Glass Doors



Folded Layout



Unfolded Layout

ALL LEVELS



1 BEDROOM ²	SQFT
INTERNAL AREA	492
BALCONY AREA	129
TOTAL AREA	622

The ROVE logos, trade-marks and trade names (the «ROVE Marks») published in this publication are owned by or licensed to Rove Hotels LLC or its Group Companies (collectively referred to as «ROVE»). The use of the ROVE Marks by IRTH Signature Development LLC (the «Company») has been authorised by ROVE under license, solely in relation to the intention of ROVE to supervise the operation of the «ROVE Home Marasi Drive, Dubai» development located in Business Bay, Dubai (the «Building») and in respect of the marketing and sale of the residences within the Building (the «Residences»). The Building and the Residences are not owned, developed or sold by ROVE. The Company, which is not an affiliate of ROVE, is responsible for the marketing and sales of the Residences. Accordingly, ROVE will not be responsible for: (a) any advertising claims or representations in this publication or otherwise made by the Company; (b) any content in this publication; (c) any marketing and/or data collection practices carried out by the Company; (d) any dealings or communications that you have with the Company; and (e) any infringement of third party rights or local laws in connection with this publication. ROVE strongly recommends that you confirm any information appearing in this publication and consult your professional advisors before proceeding with any related transaction. To the maximum extent permitted by law, ROVE will not be liable for any form of loss or damage arising out of or in connection with this publication, the Building, the Residences, or any dealings or communications that you have with the Company.

All images used are for illustrative purposes only and do not represent the actual size, features, specifications, fittings, and furnishings. The developer reserves the right to make revisions / alterations, at its absolute discretion, without any liability whatsoever.

1 BEDROOM² TYPE B

Legend

- 1. Entrance
- 2. Kitchen & Dining Area
3.00m X 3.85m
- 3. Bedroom
2.85m X 4.40m
- 4. Bathroom
3.40m X 1.55m
- 5. Living Room
3.15m X 3.60m
- 6. Balcony
7.15m X 3.45m
- 7. Foldable Bed
- 8. Laundry
- 9. Bi-fold Glass Doors



Folded Layout



Unfolded Layout

ALL LEVELS



1 BEDROOM²

SQFT

INTERNAL AREA	488-507
BALCONY AREA	263
TOTAL AREA	751-770

The ROVE logos, trade-marks and trade names (the «ROVE Marks») published in this publication are owned by or licensed to Rove Hotels LLC or its Group Companies (collectively referred to as «ROVE»). The use of the ROVE Marks by IRTH Signature Development LLC (the «Company») has been authorised by ROVE under license, solely in relation to the intention of ROVE to supervise the operation of the «ROVE Home Marasi Drive, Dubai» development located in Business Bay, Dubai (the «Building») and in respect of the marketing and sale of the residences within the Building (the «Residences»). The Building and the Residences are not owned, developed or sold by ROVE. The Company, which is not an affiliate of ROVE, is responsible for the marketing and sales of the Residences. Accordingly, ROVE will not be responsible for: (a) any advertising claims or representations in this publication or otherwise made by the Company; (b) any content in this publication; (c) any marketing and/or data collection practices carried out by the Company; (d) any dealings or communications that you have with the Company; and (e) any infringement of third party rights or local laws in connection with this publication. ROVE strongly recommends that you confirm any information appearing in this publication and consult your professional advisors before proceeding with any related transaction. To the maximum extent permitted by law, ROVE will not be liable for any form of loss or damage arising out of or in connection with this publication, the Building, the Residences, or any dealings or communications that you have with the Company.

All images used are for illustrative purposes only and do not represent the actual size, features, specifications, fittings, and furnishings. The developer reserves the right to make revisions / alterations, at its absolute discretion, without any liability whatsoever.

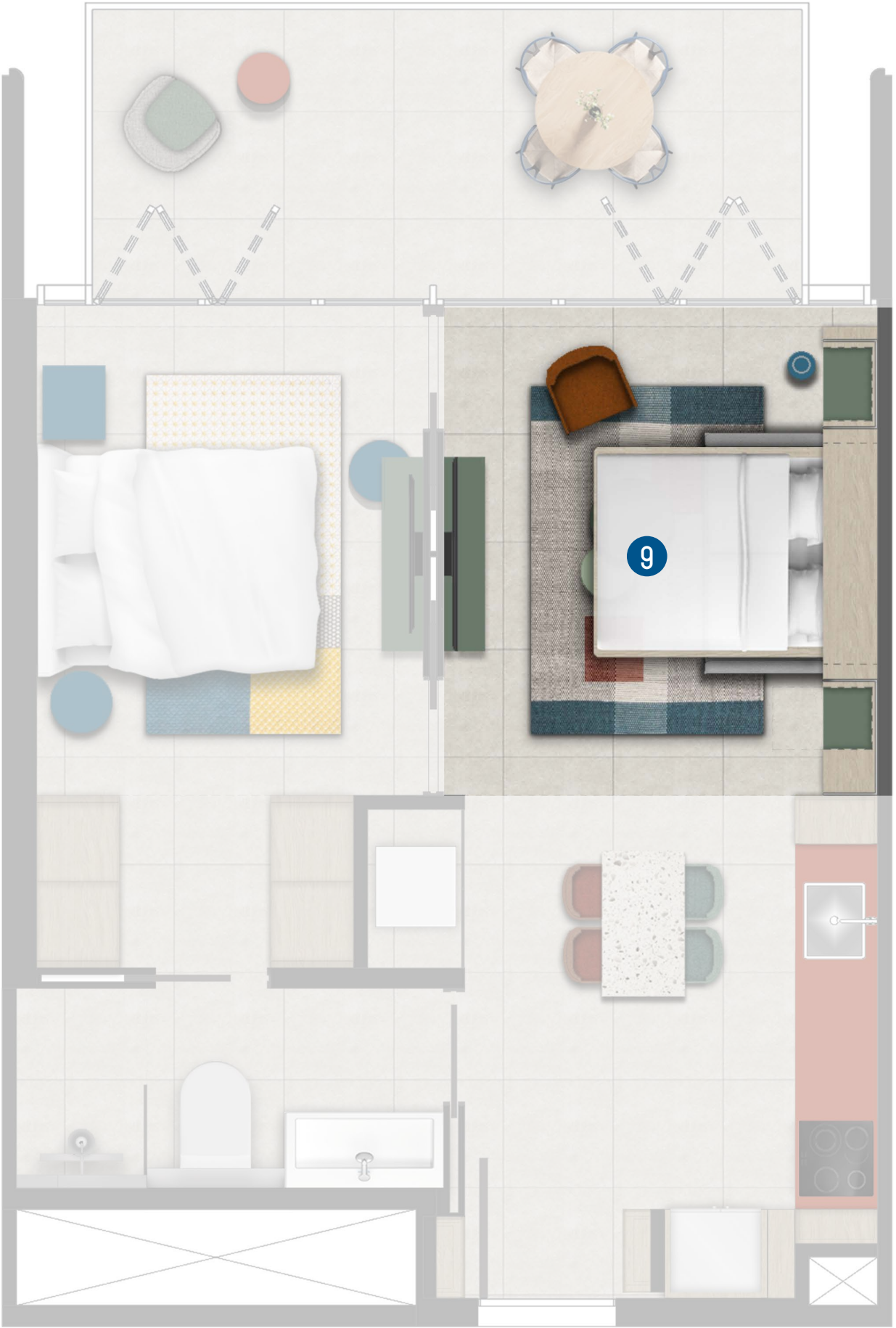
1 BEDROOM² TYPE C

Legend

- 1. Entrance
- 2. Kitchen & Dining Area
3.00m X 3.65m
- 3. Living Room
3.225m X 3.60m
- 4. Bedroom
2.875m X 3.60m
- 5. Walk-in Closet
2.35m X 1.325m
- 6. Bathroom
3.175m X 1.525m
- 7. Balcony
5.25m X 2.15m
- 8. Pocket Walls
- 9. Foldable Bed
- 10. Laundry
- 11. Bi-fold Glass Doors



Folded Layout



Unfolded Layout

ALL LEVELS



1BEDROOM ²	SQFT
INTERNAL AREA	487-520
BALCONY AREA	121-122
TOTAL AREA	608-642

The ROVE logos, trade-marks and trade names (the «ROVE Marks») published in this publication are owned by or licensed to Rove Hotels LLC or its Group Companies (collectively referred to as «ROVE»). The use of the ROVE Marks by IRTH Signature Development LLC (the «Company») has been authorised by ROVE under license, solely in relation to the intention of ROVE to supervise the operation of the «ROVE Home Marasi Drive, Dubai» development located in Business Bay, Dubai (the «Building») and in respect of the marketing and sale of the residences within the Building (the «Residences»). The Building and the Residences are not owned, developed or sold by ROVE. The Company, which is not an affiliate of ROVE, is responsible for the marketing and sales of the Residences. Accordingly, ROVE will not be responsible for: (a) any advertising claims or representations in this publication or otherwise made by the Company; (b) any content in this publication; (c) any marketing and/or data collection practices carried out by the Company; (d) any dealings or communications that you have with the Company; and (e) any infringement of third party rights or local laws in connection with this publication. ROVE strongly recommends that you confirm any information appearing in this publication and consult your professional advisors before proceeding with any related transaction. To the maximum extent permitted by law, ROVE will not be liable for any form of loss or damage arising out of or in connection with this publication, the Building, the Residences, or any dealings or communications that you have with the Company.

All images used are for illustrative purposes only and do not represent the actual size, features, specifications, fittings, and furnishings. The developer reserves the right to make revisions / alterations, at its absolute discretion, without any liability whatsoever.

1 BEDROOM² TYPE D

Legend

- 1. Entrance
- 2. Kitchen & Dining Area
3.275m X 3.55m
- 3. Living Room
3.575m X 3.45m
- 4. Bedroom
3.375m X 3.90m
- 5. Bathroom
3.175m X 1.50m
- 6. Balcony
4.7m X 2.4m
- 7. Pocket Walls
- 8. Foldable Bed
- 9. Laundry
- 10. Bi-fold Glass Doors



Folded Layout



Unfolded Layout

LEVELS 5-21



LEVELS 24-31



1 BEDROOM ²	SQFT
INTERNAL AREA	486-501
BALCONY AREA	118-121
TOTAL AREA	607-619

The ROVE logos, trade-marks and trade names (the «ROVE Marks») published in this publication are owned by or licensed to Rove Hotels LLC or its Group Companies (collectively referred to as «ROVE»). The use of the ROVE Marks by IRTH Signature Development LLC (the «Company») has been authorised by ROVE under license, solely in relation to the intention of ROVE to supervise the operation of the «ROVE Home Marasi Drive, Dubai» development located in Business Bay, Dubai (the «Building») and in respect of the marketing and sale of the residences within the Building (the «Residences»). The Building and the Residences are not owned, developed or sold by ROVE. The Company, which is not an affiliate of ROVE, is responsible for the marketing and sales of the Residences. Accordingly, ROVE will not be responsible for: (a) any advertising claims or representations in this publication or otherwise made by the Company; (b) any content in this publication; (c) any marketing and/or data collection practices carried out by the Company; (d) any dealings or communications that you have with the Company; and (e) any infringement of third party rights or local laws in connection with this publication. ROVE strongly recommends that you confirm any information appearing in this publication and consult your professional advisors before proceeding with any related transaction. To the maximum extent permitted by law, ROVE will not be liable for any form of loss or damage arising out of or in connection with this publication, the Building, the Residences, or any dealings or communications that you have with the Company.

All images used are for illustrative purposes only and do not represent the actual size, features, specifications, fittings, and furnishings. The developer reserves the right to make revisions / alterations, at its absolute discretion, without any liability whatsoever.

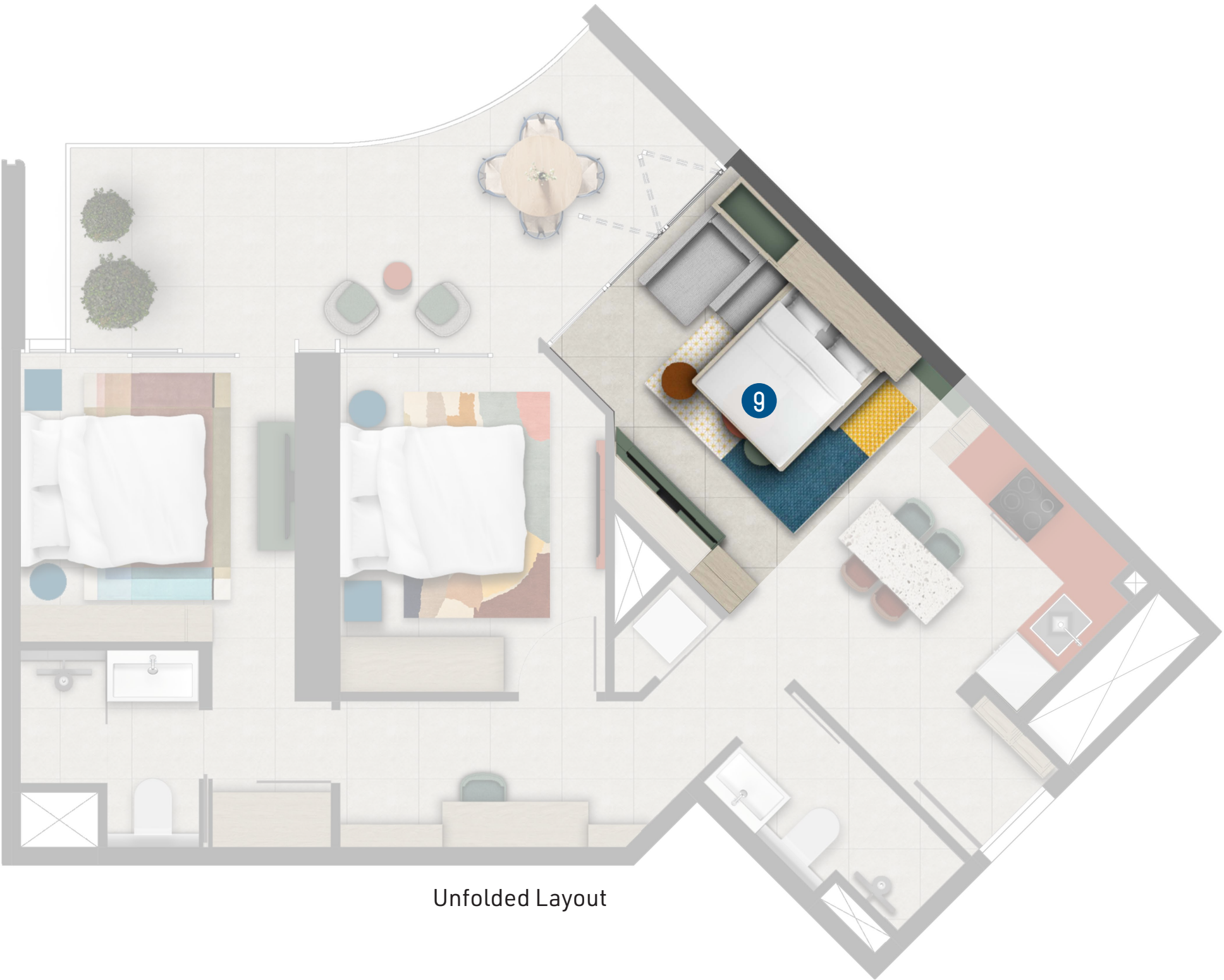
2 BEDROOM² TYPE A

Legend

- 1. Entrance
- 2. Kitchen & Dining Area
3.50m X 2.75m
- 3. Living Room
3.50m X 3.75m
- 4. Bathroom
1.45m X 2.70m
- 5. Master Bedroom
3.00m X 3.25m
- 6. Master Bathroom
2.025m X 2.2m
- 7. Bedroom
2.90m X 3.80m
- 8. Balcony
7.3m X 2.25m
- 9. Foldable Bed
- 10. Study Den
- 11. Bi-fold Glass Doors
- 12. Laundry



Folded Layout



Unfolded Layout

ALL LEVELS



2 BEDROOM ²		SQFT
INTERNAL AREA		737
BALCONY AREA		177
TOTAL AREA		914

The ROVE logos, trade-marks and trade names (the «ROVE Marks») published in this publication are owned by or licensed to Rove Hotels LLC or its Group Companies (collectively referred to as «ROVE»). The use of the ROVE Marks by IRTH Signature Development LLC (the «Company») has been authorised by ROVE under license, solely in relation to the intention of ROVE to supervise the operation of the «ROVE Home Marasi Drive, Dubai» development located in Business Bay, Dubai (the «Building») and in respect of the marketing and sale of the residences within the Building (the «Residences»). The Building and the Residences are not owned, developed or sold by ROVE. The Company, which is not an affiliate of ROVE, is responsible for the marketing and sales of the Residences. Accordingly, ROVE will not be responsible for: (a) any advertising claims or representations in this publication or otherwise made by the Company; (b) any content in this publication; (c) any marketing and/or data collection practices carried out by the Company; (d) any dealings or communications that you have with the Company; and (e) any infringement of third party rights or local laws in connection with this publication. ROVE strongly recommends that you confirm any information appearing in this publication and consult your professional advisors before proceeding with any related transaction. To the maximum extent permitted by law, ROVE will not be liable for any form of loss or damage arising out of or in connection with this publication, the Building, the Residences, or any dealings or communications that you have with the Company.

All images used are for illustrative purposes only and do not represent the actual size, features, specifications, fittings, and furnishings. The developer reserves the right to make revisions / alterations, at its absolute discretion, without any liability whatsoever.

2 BEDROOM² TYPE B

- Legend
1.

Entrance
2.

Kitchen & Dining Area
2.90m X 3.55m
3.

Living Room
3.60m X 3.125m
4.

Bathroom
3.20m X 1.50m
5.

Master Bedroom
4.40m X 2.985m
6.

Master Bathroom
3.20m X 1.50m
7.

Bedroom
4.25m X 2.975m
8.

Balcony
5.4m X 3.75m
9.

Foldable Bed
10.

Bi-fold Glass Doors
11.

Laundry



ALL LEVELS



2 BEDROOM ²		SQFT
INTERNAL AREA		729
BALCONY AREA		328
TOTAL AREA		1,058

The ROVE logos, trade-marks and trade names (the «ROVE Marks») published in this publication are owned by or licensed to Rove Hotels LLC or its Group Companies (collectively referred to as «ROVE»). The use of the ROVE Marks by IRTS Signature Development LLC (the «Company») has been authorised by ROVE under license, solely in relation to the intention of ROVE to supervise the operation of the «ROVE Home Marasi Drive, Dubai» development located in Business Bay, Dubai (the «Building») and in respect of the marketing and sale of the residences within the Building (the «Residences»). The Building and the Residences are not owned, developed or sold by ROVE. The Company, which is not an affiliate of ROVE, is responsible for the marketing and sales of the Residences. Accordingly, ROVE will not be responsible for: (a) any advertising claims or representations in this publication or otherwise made by the Company; (b) any content in this publication; (c) any marketing and/or data collection practices carried out by the Company; (d) any dealings or communications that you have with the Company; and (e) any infringement of third party rights or local laws in connection with this publication. ROVE strongly recommends that you confirm any information appearing in this publication and consult your professional advisors before proceeding with any related transaction. To the maximum extent permitted by law, ROVE will not be liable for any form of loss or damage arising out of or in connection with this publication, the Building, the Residences, or any dealings or communications that you have with the Company.

All images used are for illustrative purposes only and do not represent the actual size, features, specifications, fittings, and furnishings. The developer reserves the right to make revisions / alterations, at its absolute discretion, without any liability whatsoever.